



MICRO LOG

Company STROKE OF LUCK ENERGY &  
Well CUSTER VALLEY # 04-0517  
Field SOLOMON  
County ELLIS State KANSAS

Location: API #: 15-051-26874-0000  
1154' FSL & 2362' FWL  
SEC 24 TWP 11S RGE 19W  
Permanent Datum GROUND LEVEL Elevation 2057  
Log Measured From KELLY BUSHING 11' A.G.L.  
Drilling Measured From KELLY BUSHING  
Elevation  
K.B. 2068  
D.F. 2066  
G.L. 2057

Date	6/17/17
Run Number	TWO
Depth Driller	3700
Depth Logger	3700
Bottom Logged Interval	3698
Top Log Interval	2800
Casing Driller	8 5/8" @ 350'
Casing Logger	350'
Bit Size	7 7/8
Type Fluid in Hole	CHEMICAL MUD
Density / Viscosity	9.0/44
PH / Fluid Loss	9.0/16.0
Source of Sample	FLOWLINE
Rm @ Meas. Temp	.30 @ 81F
Rmt @ Meas. Temp	.22 @ 81F
Rmc @ Meas. Temp	.36 @ 81F
Source of Rmf / Rmc	MEASUREMENT
Rm @ BHT	.21 @ 133F
Time Circulation Stopped	2 HOURS
Time Logger on Bottom	
Maximum Recorded Temperature	113F
Equipment Number	3802
Location	HAYS, KANSAS
Recorded By	JASON CAPPELLUCCI
Witnessed By	KEVIN BAILEY

<<< Fold Here >>>

All interpretations are opinions based on inferences from electrical or other measurements and we cannot and do not guarantee the accuracy or correctness of any interpretation, and we shall not, except in the case of gross or willful negligence on our part, be liable or responsible for any loss, costs, damages, or expenses incurred or sustained by anyone resulting from any interpretation made by any of our officers, agents or employees. These interpretations are also subject to our general terms and conditions set out in our current Price Schedule.

Comments

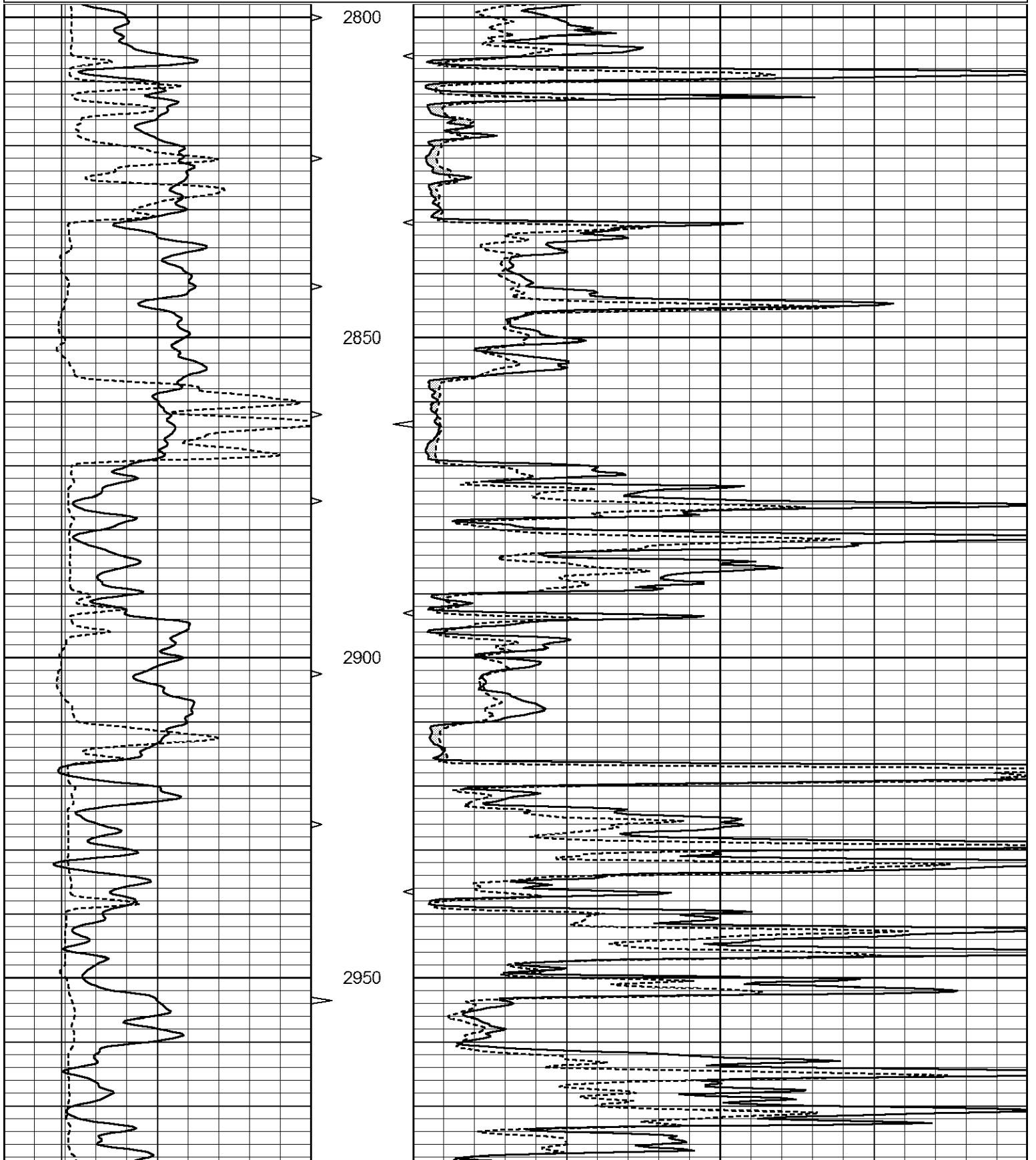
THANK YOU FOR USING ELI WIRELINE SERVICES, HAYS, KS. ( 785 ) 628-6395  
DIRECTIONS  
HAYS, KS. - NORTH TO BUCKEYE RD. - WEST TO HYACINTH RD. - NORTH  
TO DEAD END - EAST & NORTH INTO

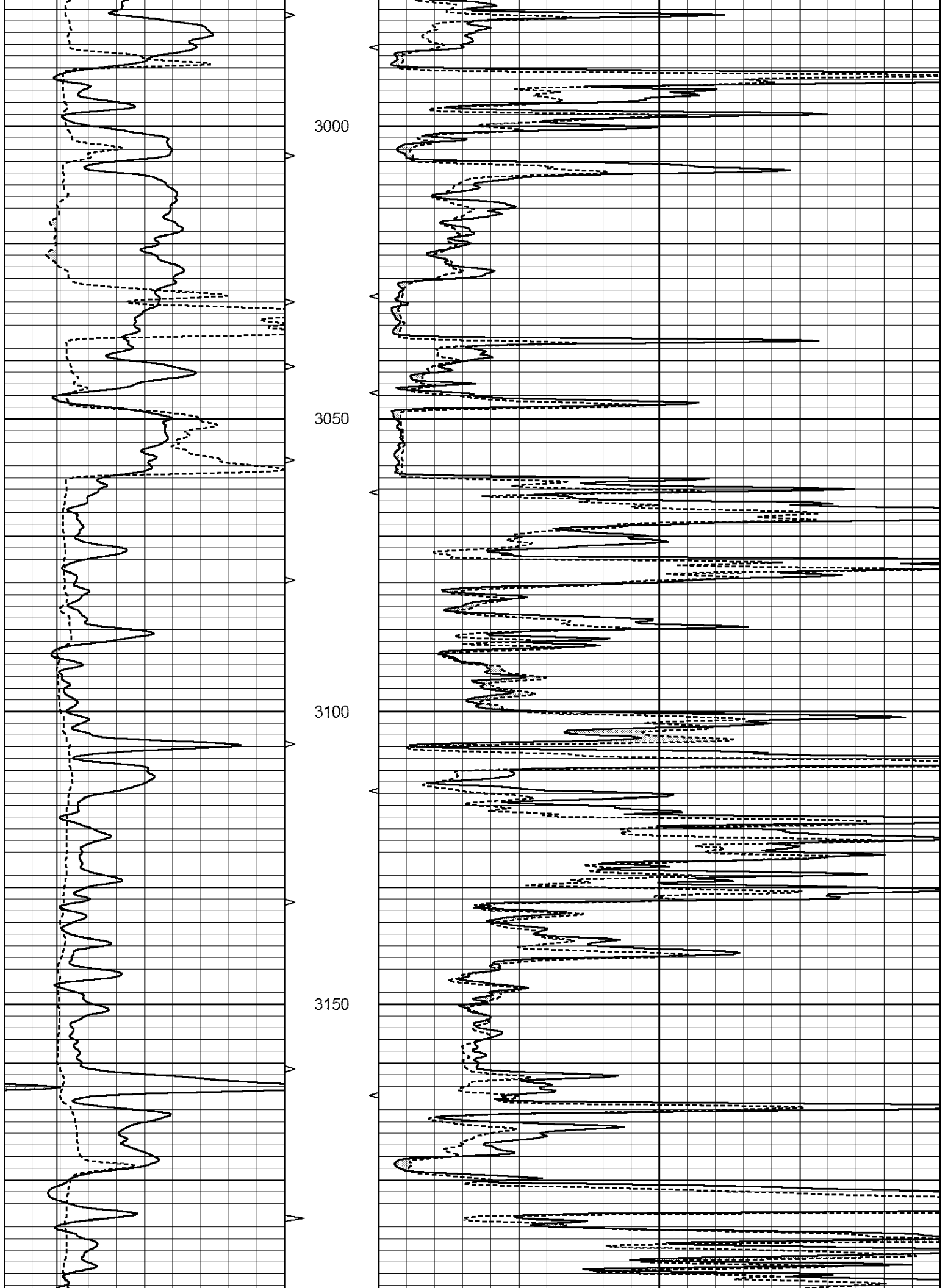


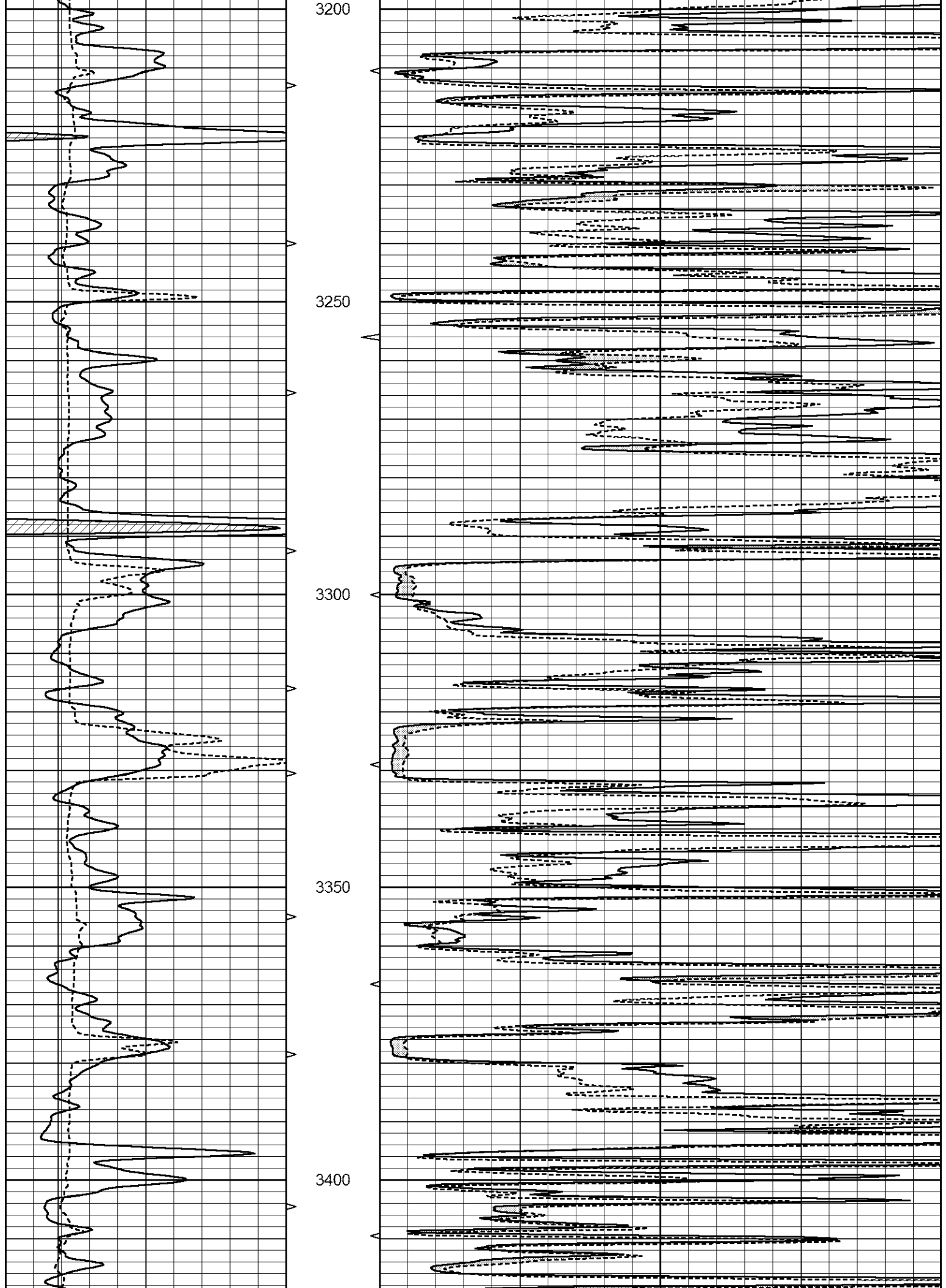
MAIN SECTION

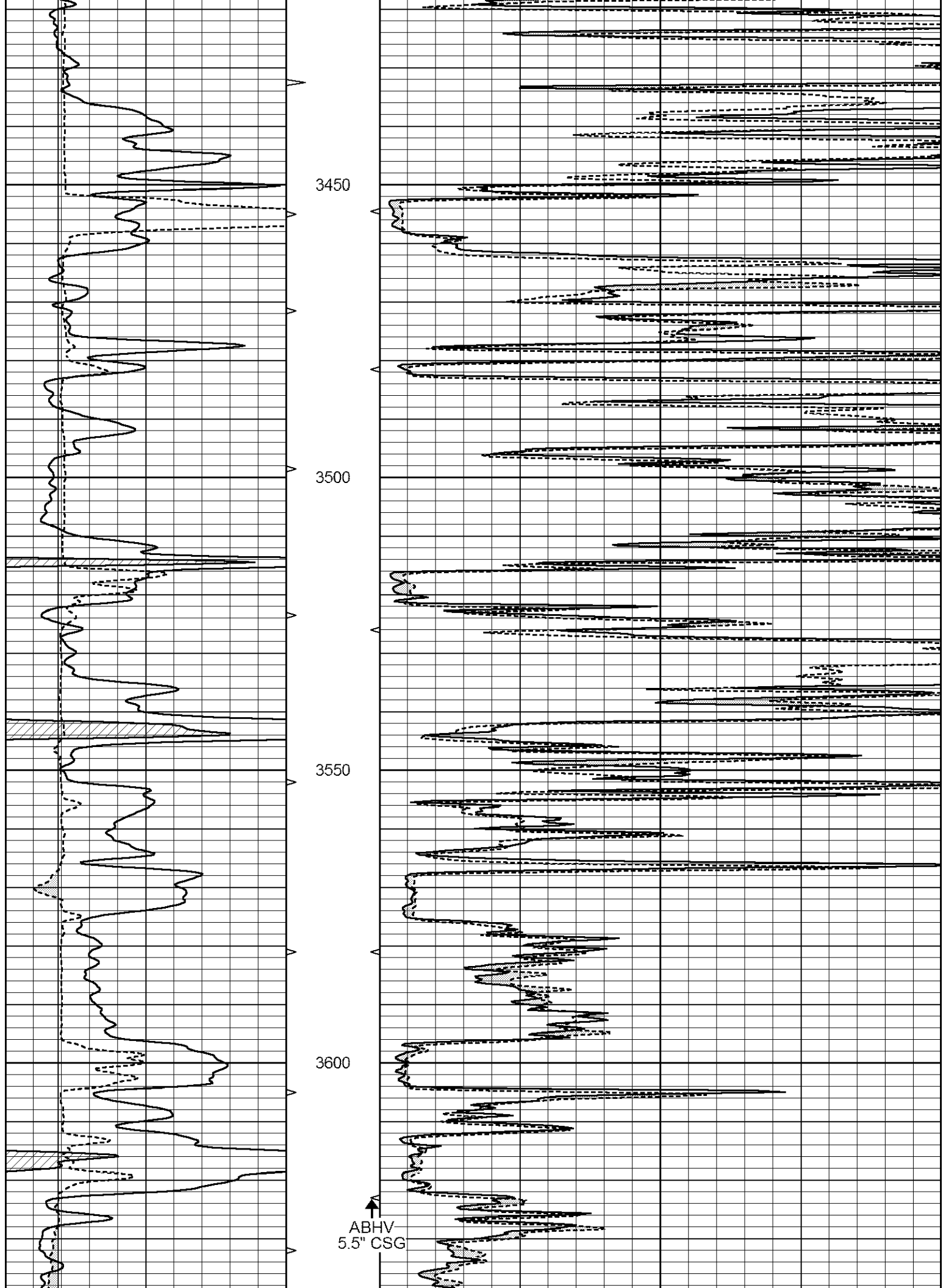
Database File 1150ddn.db  
 Dataset Pathname pass7.2  
 Presentation Format \_micro  
 Dataset Creation Sat Jun 17 07:42:19 2017  
 Charted by Depth in Feet scaled 1:240

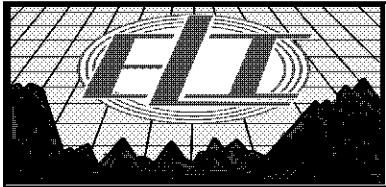
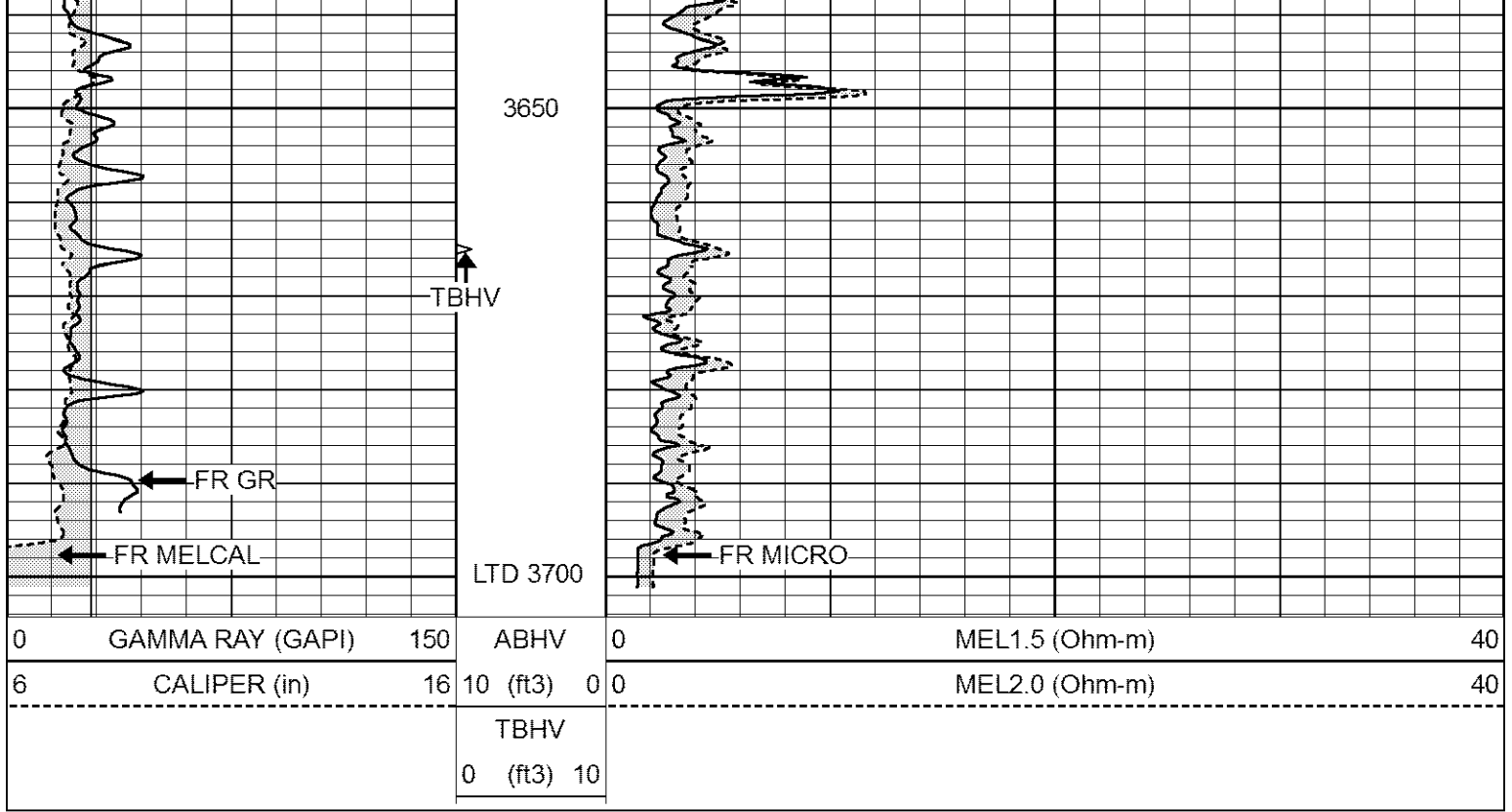
0	GAMMA RAY (GAPI)	150	ABHV	0	MEL1.5 (Ohm-m)	40
6	CALIPER (in)	16	10 (ft3)	0	MEL2.0 (Ohm-m)	40
			TBHV			
			0 (ft3)	10		







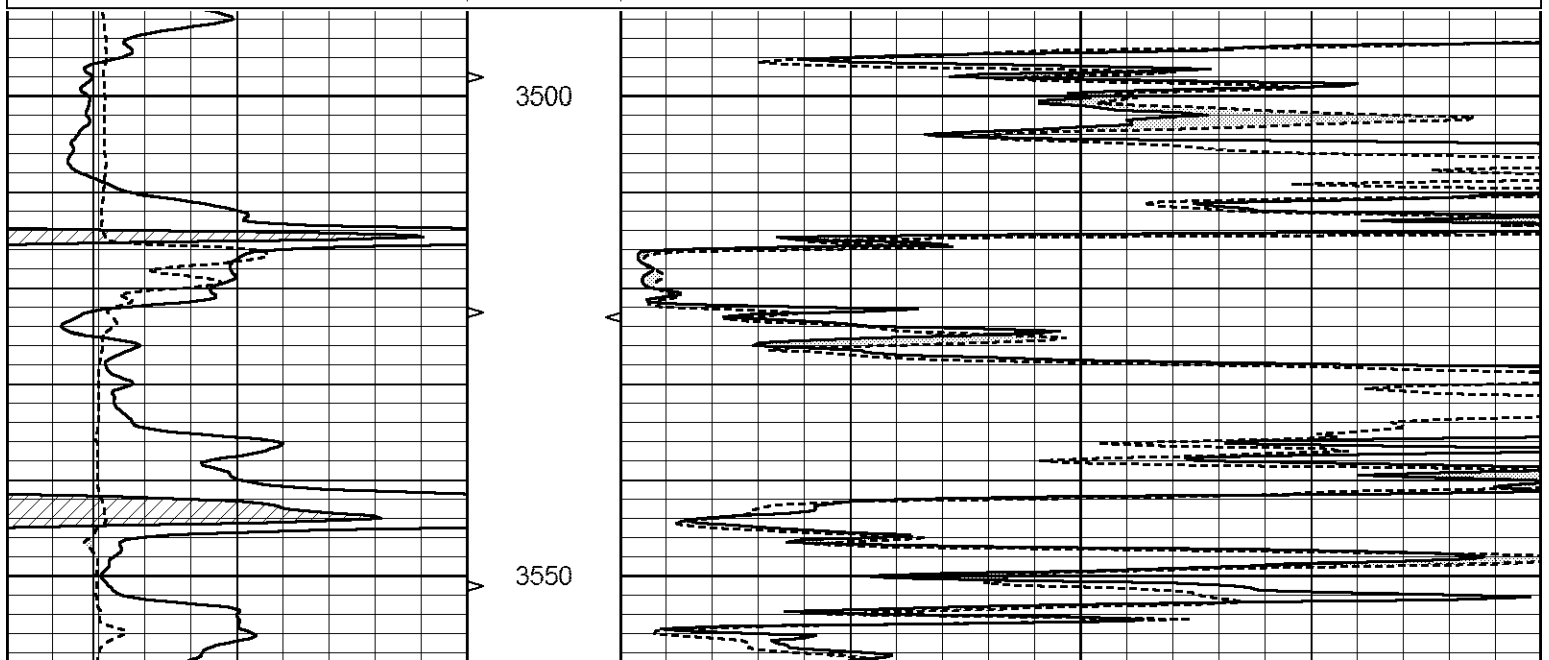


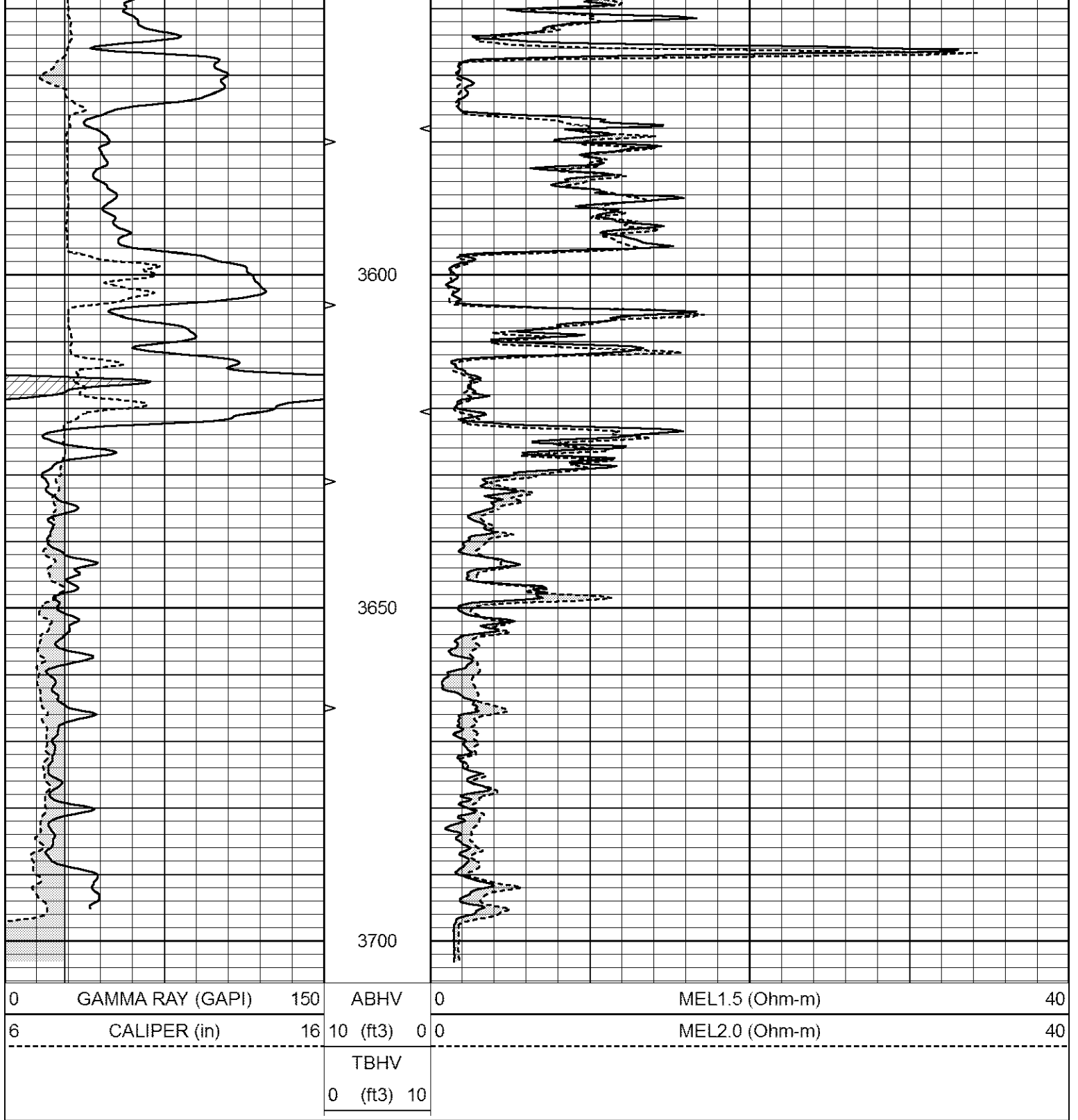


# REPEAT SECTION

Database File 1150ddn.db  
 Dataset Pathname pass6.1  
 Presentation Format \_micro  
 Dataset Creation Sat Jun 17 07:25:51 2017  
 Charted by Depth in Feet scaled 1:240

0	GAMMA RAY (GAPI)	150	ABHV	0	MEL1.5 (Ohm-m)	40
6	CALIPER (in)	16	10 (ft3)	0	MEL2.0 (Ohm-m)	40
			TBHV			
			0 (ft3)	10		





### Calibration Report

Database File 1150ddn.db  
 Dataset Pathname pass6.1  
 Dataset Creation Sat Jun 17 07:25:51 2017

### MICRO\_USR Calibration Report

Serial Number: 070911  
 Tool Model: Probel  
 Performed: Thu Dec 08 13:09:11 2016

Caliper Calibration: Gain=4.161 Offset=1.500  
 Low Cal High Cal

References	8.000	14.000
Readings	1.333	2.775
1.5" Calibration:	Gain=37.000	Offset=0.000
References	Low Cal 0.000	High Cal 20.000
Readings	0.004	0.843
2" Calibration:	Gain=35.000	Offset=0.000
References	Low Cal 0.000	High Cal 20.000
Readings	0.021	0.810

Microlog Calibration Report

Serial-Model: 070911-ProbeL  
 Performed: Sat Apr 11 01:13:01 2015

	Readings			References			Results	
	Zero	Cal		Zero	Cal		m	b
Normal	0.0002	0.4836	V	0.0000	10.0000	Ohm-m	20.6908	-0.0051
Inverse	0.0018	0.6297	V	0.0000	10.0000	Ohm-m	15.9263	-0.0282
Caliper	0.0000	1.0000	V	0.0000	1.0000	in	1.0000	0.0000

Gamma Ray Calibration Report

Serial Number: 7  
 Tool Model: Probe1  
 Performed: Wed Jun 29 11:10:58 2016

Calibrator Value: 1.0 GAPI

Background Reading: 0.0 cps  
 Calibrator Reading: 1.0 cps

Sensitivity: 0.4000 GAPI/cps