



DUAL SPACED CEMENT BOND LOG

Company: LOBO PRODUCTION
 Well: AITKEN 1-13
 Field: GOODLAND
 County: SHERMAN
 State: KANSAS
 Country: USA

Location: NW NE SE
 SEC 13 TWP 8S RGE 40 W
 Permanent Datum: GROUND LEVEL
 Log Measured From: GROUND LEVEL
 Drilling Measured From: GROUND LEVEL
 Elevation: 3683
 K B G: 3683

Date: 9/10/2019
 Run Number: ONE
 Depth: 1206
 Bottom Logger: 1202
 Top Log Interval: 0
 Open Hole Size: 6.75"
 Bottom Logged Interval: 1202-1206

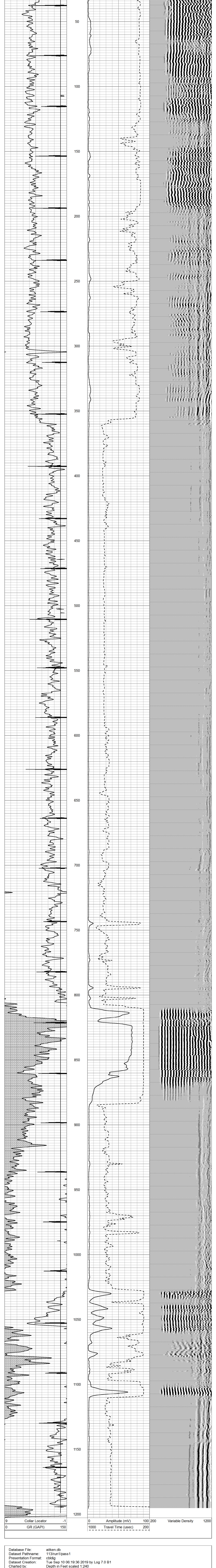
Time Well Read: 8:00 AM
 Equipment Number: HR 7
 Recorded By: CHEYENNE WELLS CO
 Witnessed By: JUSTIN STAHLCKER
 Run Number: 10
 Bit Size: 10
 Taping Record: From 10
 Casing Record: Size: 10
 String Record: Weight: 10
 Production String: Weight: 10
 Liner: Weight: 10

<<< Fold Here >>>

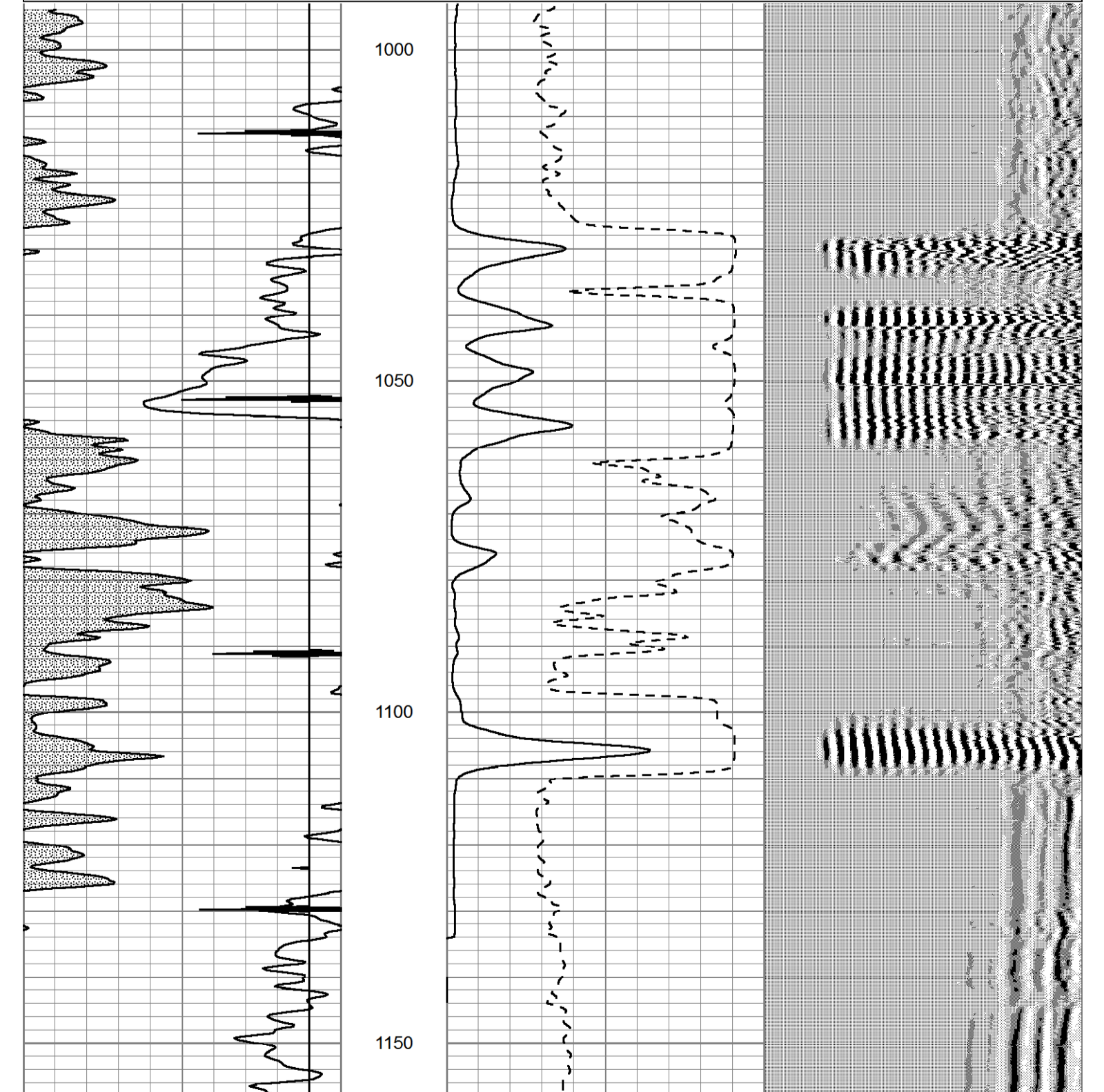
All interpretations are opinions based on inferences from electrical or other measurements and we cannot and do not guarantee the accuracy or correctness of any interpretation, and we shall not, except in the case of gross or willful negligence on our part, be liable or responsible for any loss, costs, damages, or expenses incurred or sustained by anyone resulting from any interpretation made by any of our officers, agents or employees. These interpretations are also subject to our general terms and conditions set out in our current Price Schedule.

Comments

Database File: aitken.db
 Dataset Pathname: 113/run1/pass2
 Presentation Format: cblbig
 Dataset Creation: Tue Sep 10 06:27:15 2019 by Log 7.0 B1
 Charted by: Depth in Feet scaled 1:240



Database File: aitken.db
 Dataset Pathname: 113/run1/pass1
 Presentation Format: cblbig
 Dataset Creation: Tue Sep 10 06:19:36 2019 by Log 7.0 B1
 Charted by: Depth in Feet scaled 1:240



Database File: aitken.db
 Dataset Pathname: 113/run1/pass1
 Dataset Creation: Tue Sep 10 06:19:36 2019 by Log 7.0 B1

Calibration Report

Gamma Ray Calibration Report

Serial Number: 061120GR
 Tool Model: PROBE
 Performed: Sun Nov 26 10:38:48 2017

Calibrator Value: 1.0 GAPI

Background Reading: 0.0 cps
 Calibrator Reading: 85.8 cps

Sensitivity: 0.9500 GAPI/cps

Cement Bond Log Calibration Report

Serial Number: 5.5dig040201
 Tool Model: Probe2750Digital
 Performed: Tue Sep 10 06:21:20 2019

Depth: 836.868 ft
 Casing Diameter: 5.5 in

3" Spacing 5" Spacing

Signal Zero: 0.25 0 mV
 Calibrated Amplitude: 71.921 71.921 mV
 Reading at Signal Zero: -0.0487061 0.00432129 V
 Reading in Free Pipe: 2.38481 2.33535 V

Gain: 29.4516 30.8537
 Offset: 1.68447 -0.133328