



**MICRO  
RESISTIVITY  
LOG**

Company Jason Oil Company LLC  
 Well Pittman-Carsten #1  
 Field Sweet Southeast  
 County Rooks  
 State Kansas

Company Jason Oil Company LLC  
 Well Pittman-Carsten #1  
 Field Sweet Southeast  
 County Rooks State Kansas

Location: API #: 15 163 24388  
 330' FNL & 2875' FEL  
 SEC 20 TWP 8S RGE 18W  
 Permanent Datum Ground Level Elevation 2012'  
 Log Measured From KB 10' AGL  
 Drilling Measured From KB  
 Other Services  
 DIL  
 CDNL  
 Elevation  
 K.B. 2022'  
 D.F. 2021'  
 G.L. 2012'

Date	4-9-19
Run Number	Two
Depth Driller	3500'
Depth Logger	3500'
Bottom Logged Interval	3498'
Top Log Interval	2850'
Casing Driller	8 5/8" @ 241'
Casing Logger	241'
Bit Size	7 7/8"
Type Fluid in Hole	Chemical
Density / Viscosity	9.1/55
pH / Fluid Loss	9.0/8.0
Source of Sample	Pit Chlorides 4000 PPM
Rm @ Meas. Temp	1.4@74degf
Rmt @ Meas. Temp	1.1@74degf
Rmc @ Meas. Temp	1.7@74degf
Source of Rmf / Rmc	Calculated
Rm @ BHT	1.1@98degf
Time Circulation Stopped	9:45 a.m
Time Logger on Bottom	1:55 pm
Maximum Recorded Temperature	98degf
Equipment Number	T605
Location	Hays, KS.
Recorded By	C. Patterson
Witnessed By	Mr. Jeff Lawler

<<< Fold Here >>>

All interpretations are opinions based on inferences from electrical or other measurements and we cannot and do not guarantee the accuracy or correctness of any interpretation, and we shall not, except in the case of gross or willful negligence on our part, be liable or responsible for any loss, costs, damages, or expenses incurred or sustained by anyone resulting from any interpretation made by any of our officers, agents or employees. These interpretations are also subject to our general terms and conditions set out in our current Price Schedule.

**Comments**

North Of Plainville,KS to N Terrace Then West on N Terrace 1 mi to T (16 Terrace),  
 Then South on 16 Terrace turns to O Rd for 2 mi to 15 Rd., South on 15 Rd. 1 mi .to P Rd.,  
 Then West on P Rd. 0.5 mi., Southeast Into Location

Thanks for using Gemini Wireline LLC  
 785-625-1182

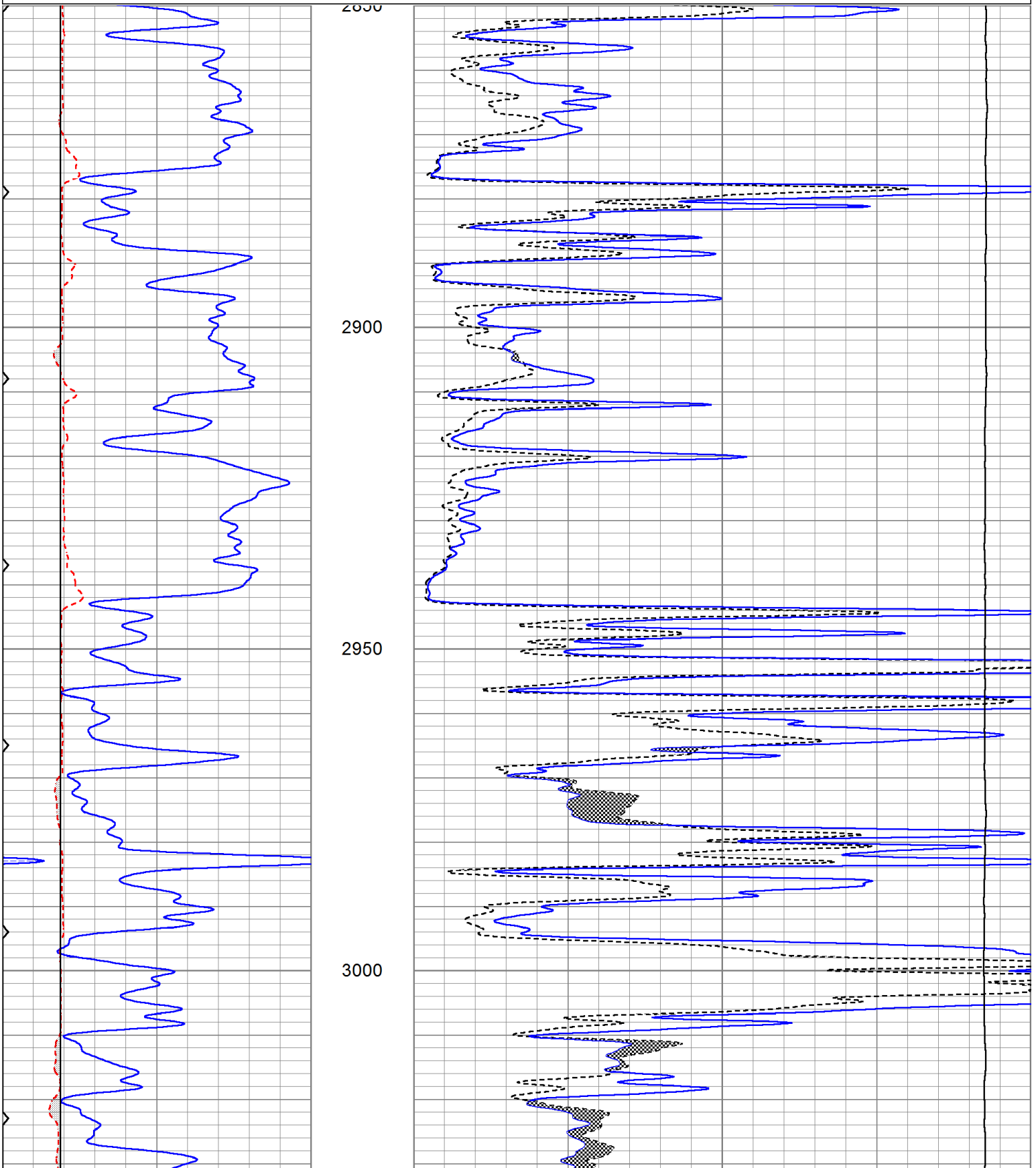


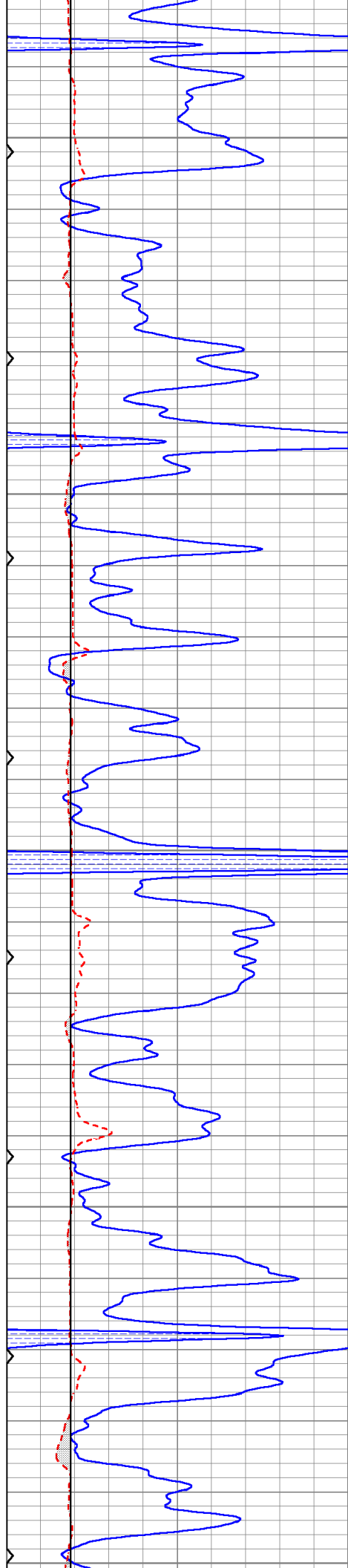
**MAIN PASS**

Database File jopittman-carsten#1oh.db  
 Dataset Pathname pass4  
 Presentation Format kml  
 Dataset Creation Tue Apr 09 14:08:31 2019  
 Charted by Depth in Feet scaled 1:240

0	GR (GAPI)	150
6	MCAL (in)	16
6	BOREID (in)	16
0	MINMK	50

0	MN 2" (Ohm-m)	20
0	MI 1" (Ohm-m)	20
10000	LTEN (lb)	0





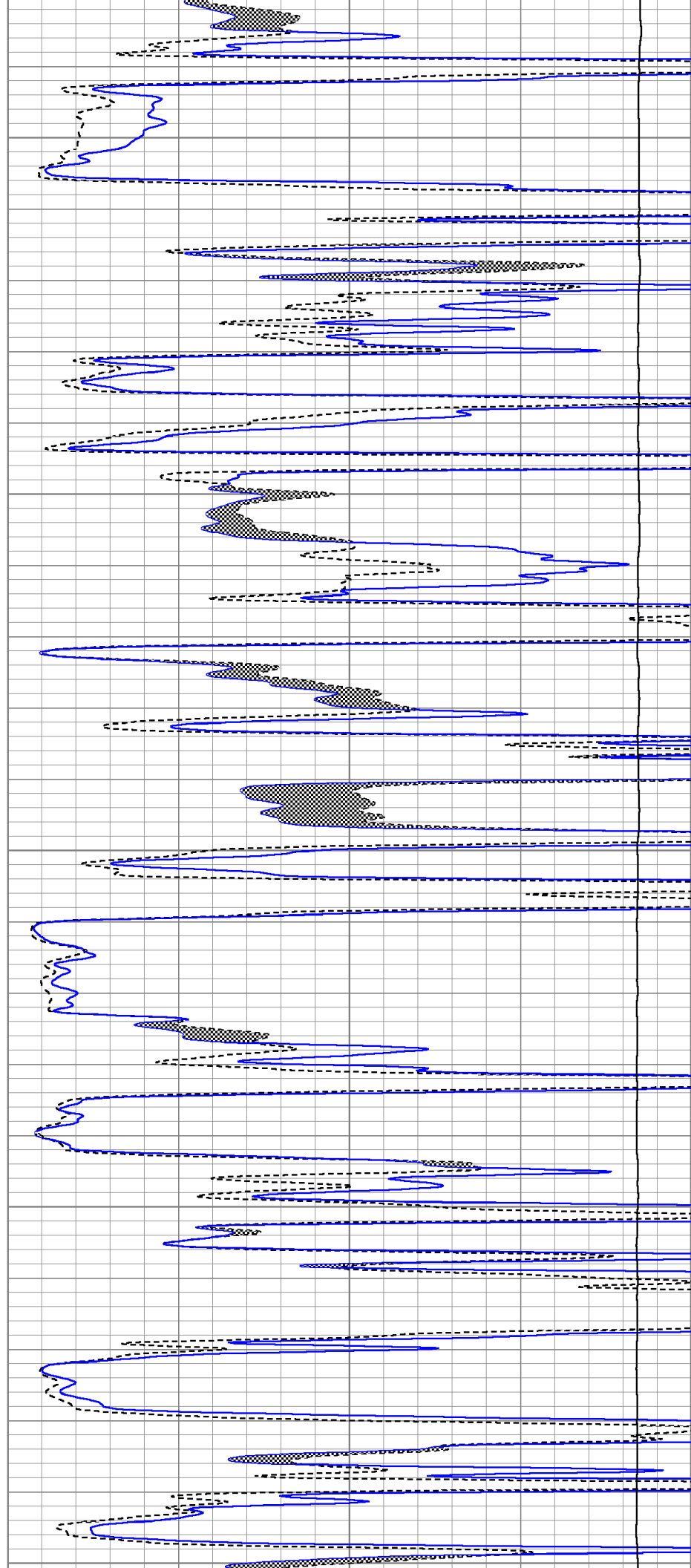
3050

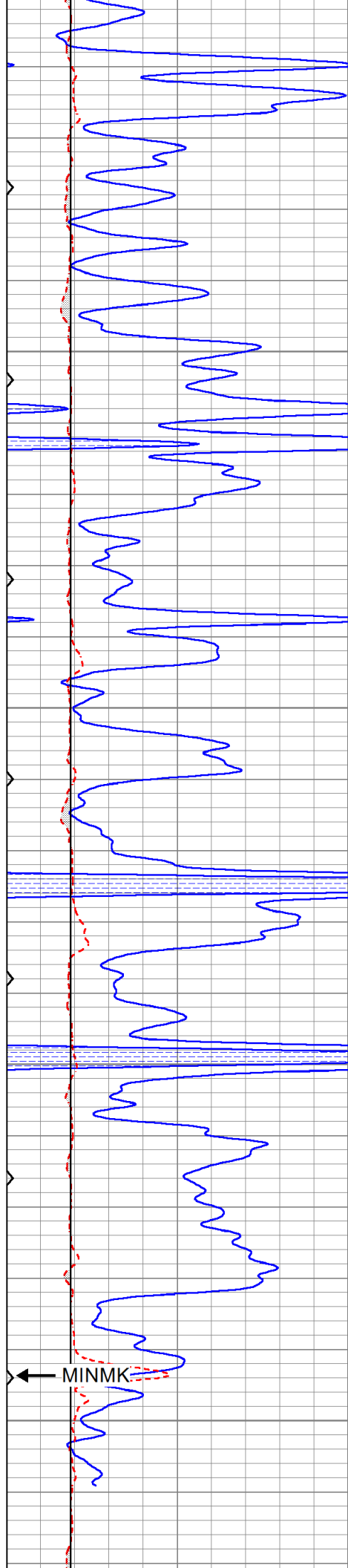
3100

3150

3200

3250



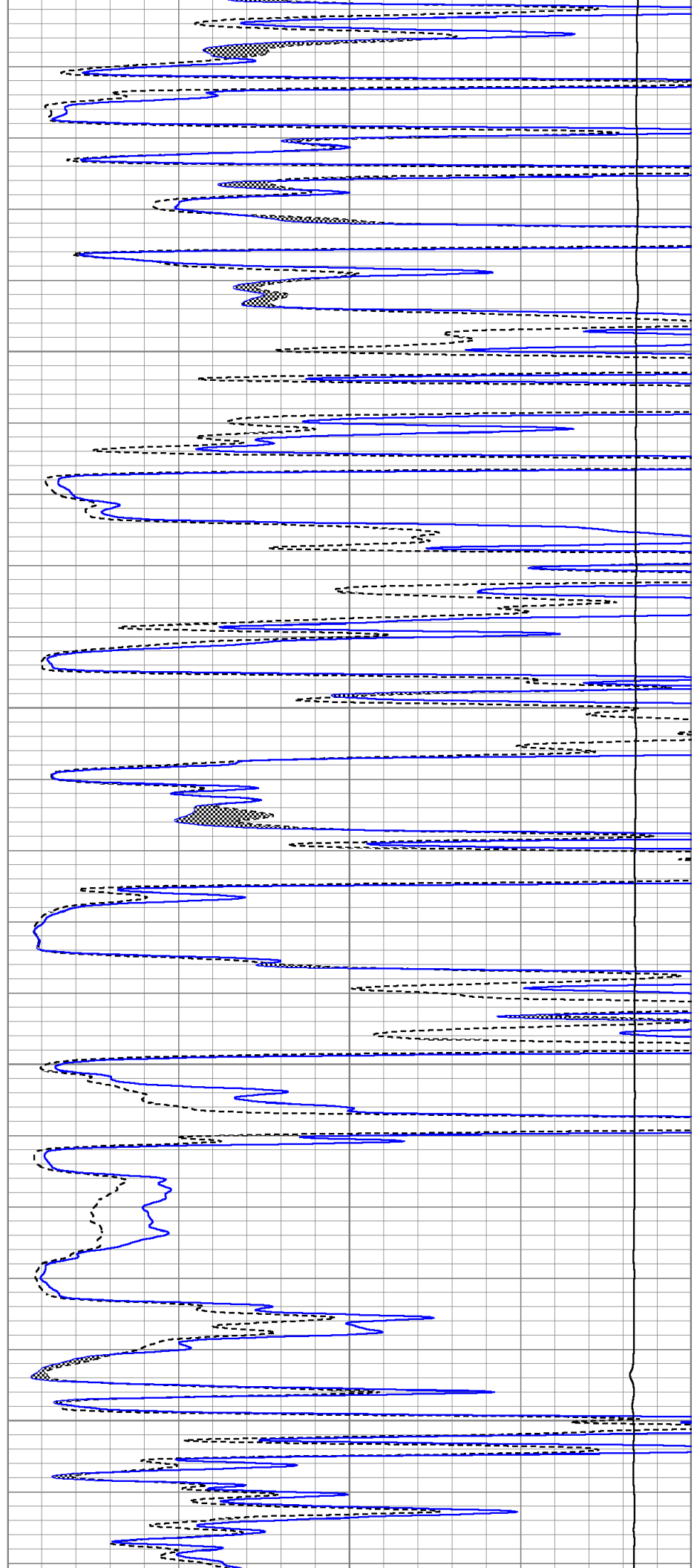


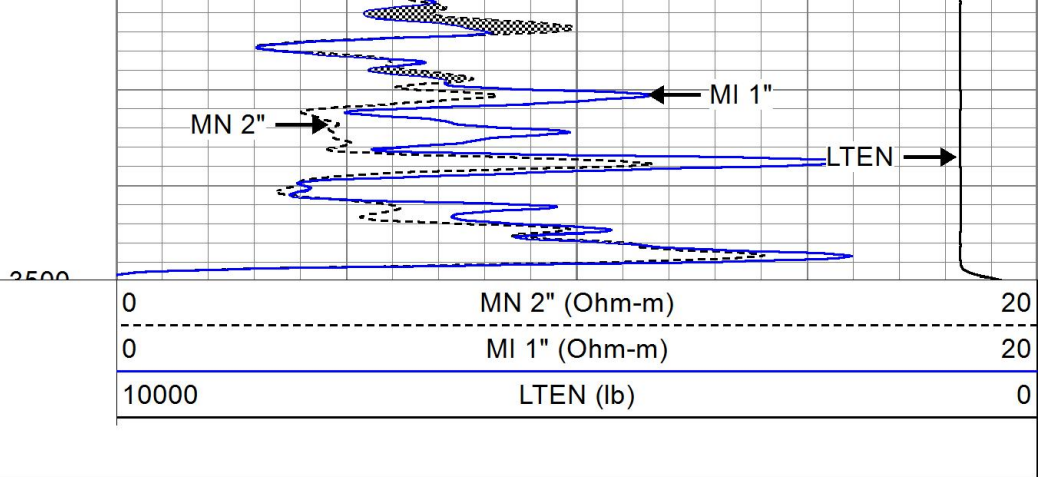
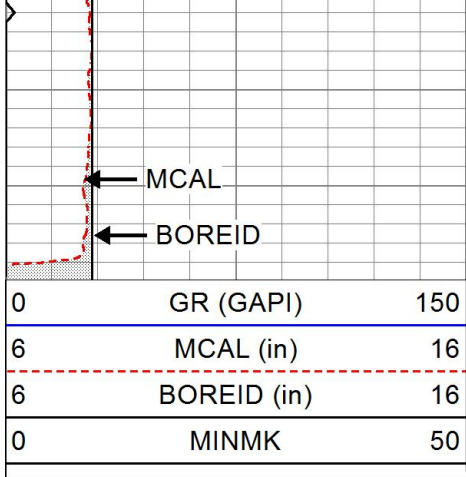
3300

3350

3400

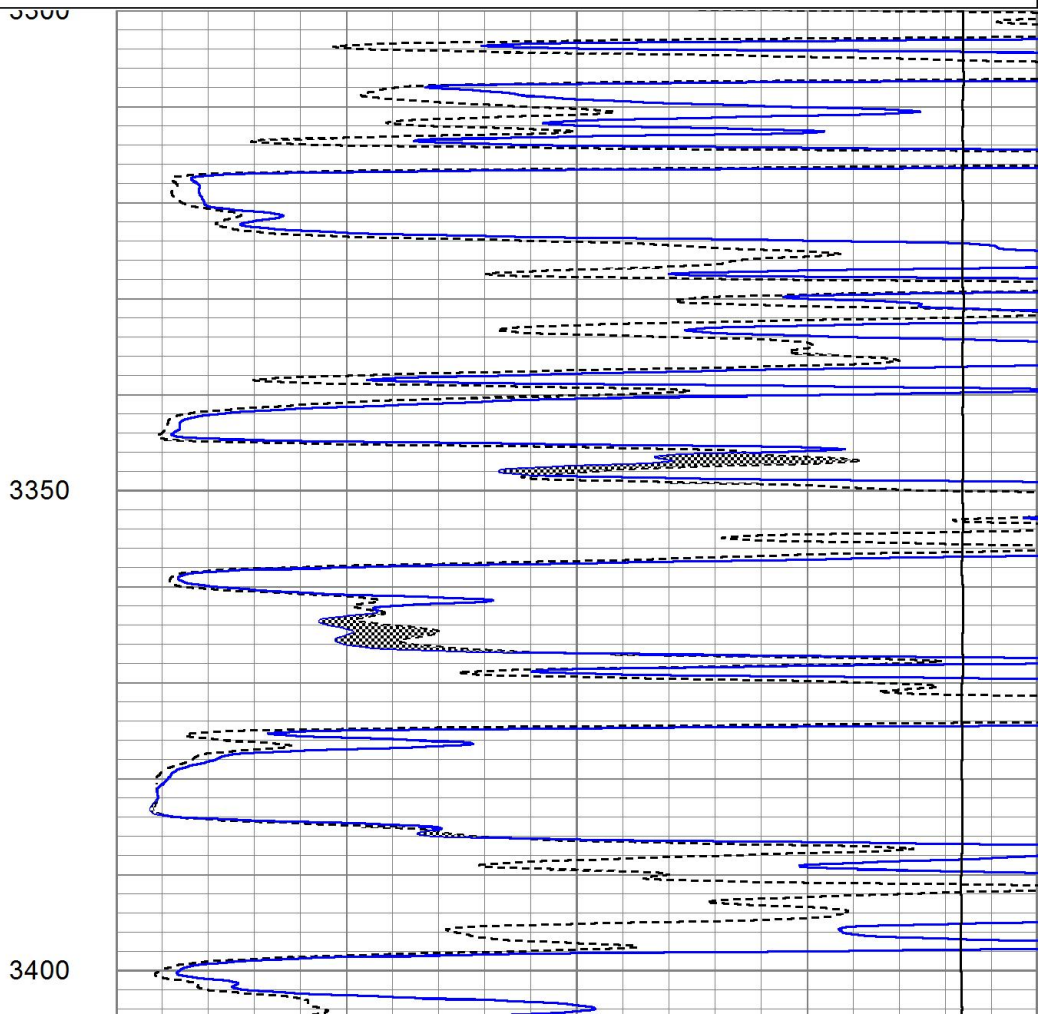
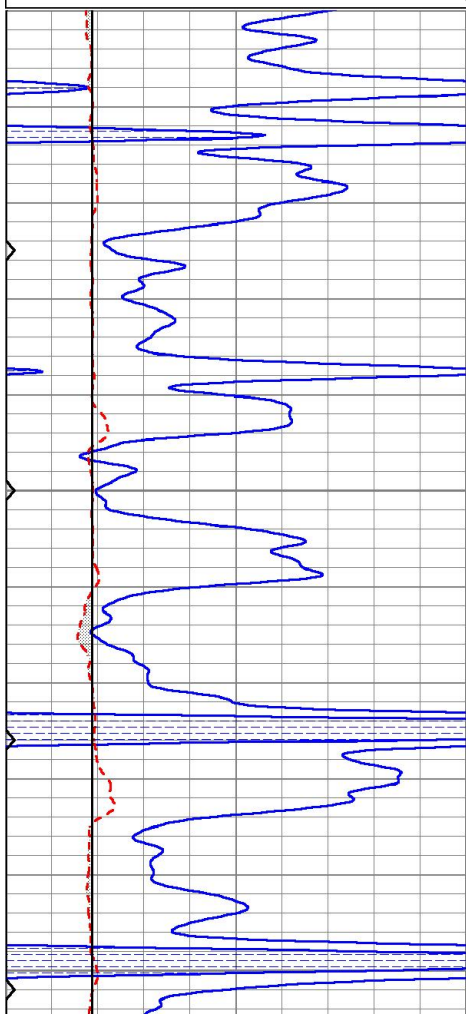
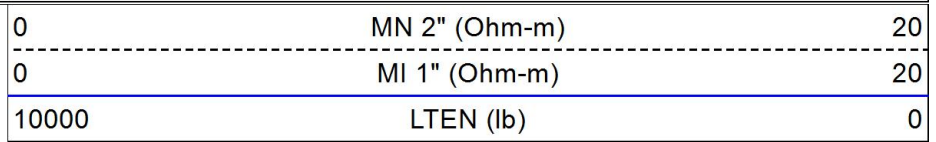
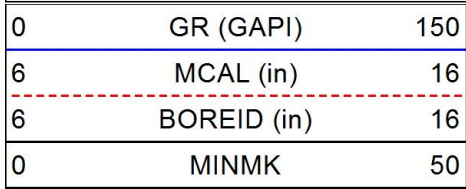
3450

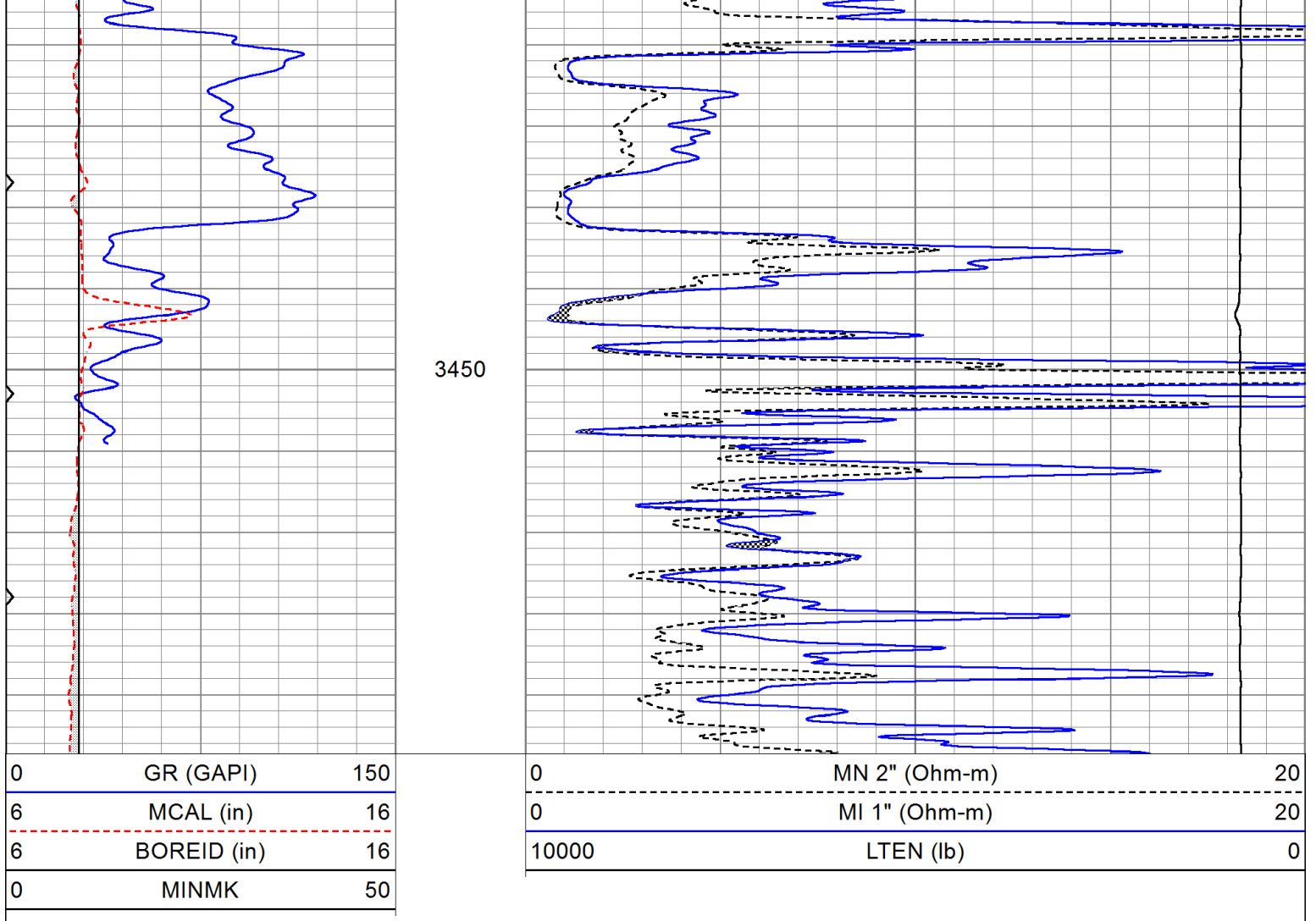




# REPEAT SECTION

Database File jopittman-carsten#1oh.db  
 Dataset Pathname pass3  
 Presentation Format kml  
 Dataset Creation Tue Apr 09 13:57:10 2019  
 Charted by Depth in Feet scaled 1:240





### Calibration Report

Database File jopittman-carsten#1oh.db  
 Dataset Pathname pass3  
 Dataset Creation Tue Apr 09 13:57:10 2019

### Microlog Calibration Report

Serial-Model: 1600-Pengo  
 Performed: Tue Apr 09 13:54:06 2019

	Readings			References			Results	
	Zero	Cal		Zero	Cal		m	b
Normal	0.0070	0.4849	V	0.0000	10.0000	Ohm-m	20.9261	-0.1465
Inverse	0.0078	0.6335	V	0.0000	10.0000	Ohm-m	15.9831	-0.1248
Caliper	3.9124	9.9563	V	8.1000	17.0000	in	1.4726	2.3388

Sensor	Offset (ft)	Schematic	Description	Length (ft)	O.D. (in)	Weight (lb)
MCAL	1.30		CHD-None	0.75	1.50	5.00
MI	1.30		ML-Pengo (1600)	6.97	3.50	100.00
MN	1.30					

Dataset: jopittman-carsten#1oh.db: field/well/run1/pass4  
 Total length: 7.72 ft  
 Total weight: 105.00 lb  
 O.D.: 3.50 in