



**COMPENSATED  
DENSITY/NEUTRON  
LOG**

Company JOHN C. GINTHER OIL, LLC.  
Well SCHAEFER #7  
Field EXPERIMENT SOUTHEAST  
County ELLIS  
State KANSAS

Company JOHN C. GINTHER OIL, LLC.  
Well SCHAEFER #7  
Field EXPERIMENT SOUTHEAST  
County ELLIS State KANSAS

Location: API #: 15-051-26873-0000  
2310' FSL & 1843' FEL  
SEC 17 TWP 14S RGE 18W  
Permanent Datum GROUND LEVEL Elevation 2033  
Log Measured From KELLY BUSHING 5' A.G.L  
Drilling Measured From KELLY BUSHING  
Other Services DIL/MEL  
Elevation K.B. 2038  
D.F. 2036  
G.L. 2033

Date	7/18/17
Run Number	ONE
Depth Driller	3737
Depth Logger	3738
Bottom Logged Interval	3714
Top Log Interval	2900
Casing Driller	8 5/8" @ 598'
Casing Logger	598'
Bit Size	7 7/8
Type Fluid in Hole	CHEMICAL MUD
Density / Viscosity	9.1/68
PH / Fluid Loss	8.0/12.2
Source of Sample	FLOWLINE
Rm @ Meas. Temp	.40 @ 101F
Rmt @ Meas. Temp	.30 @ 101F
Rmc @ Meas. Temp	.48 @ 101F
Source of Rmf / Rmc	MEASUREMENT
Rm @ BHT	.35 @ 114F
Time Circulation Stopped	2 HOURS
Time Logger on Bottom	
Maximum Recorded Temperature	120F
Equipment Number	3802
Location	HAYS, KANSAS
Recorded By	JASON CAPPELLUCCI
Witnessed By	JERRY GREEN

<<< Fold Here >>>

All interpretations are opinions based on inferences from electrical or other measurements and we cannot and do not guarantee the accuracy or correctness of any interpretation, and we shall not, except in the case of gross or willful negligence on our part, be liable or responsible for any loss, costs, damages, or expenses incurred or sustained by anyone resulting from any interpretation made by any of our officers, agents or employees. These interpretations are also subject to our general terms and conditions set out in our current Price Schedule.

**Comments**

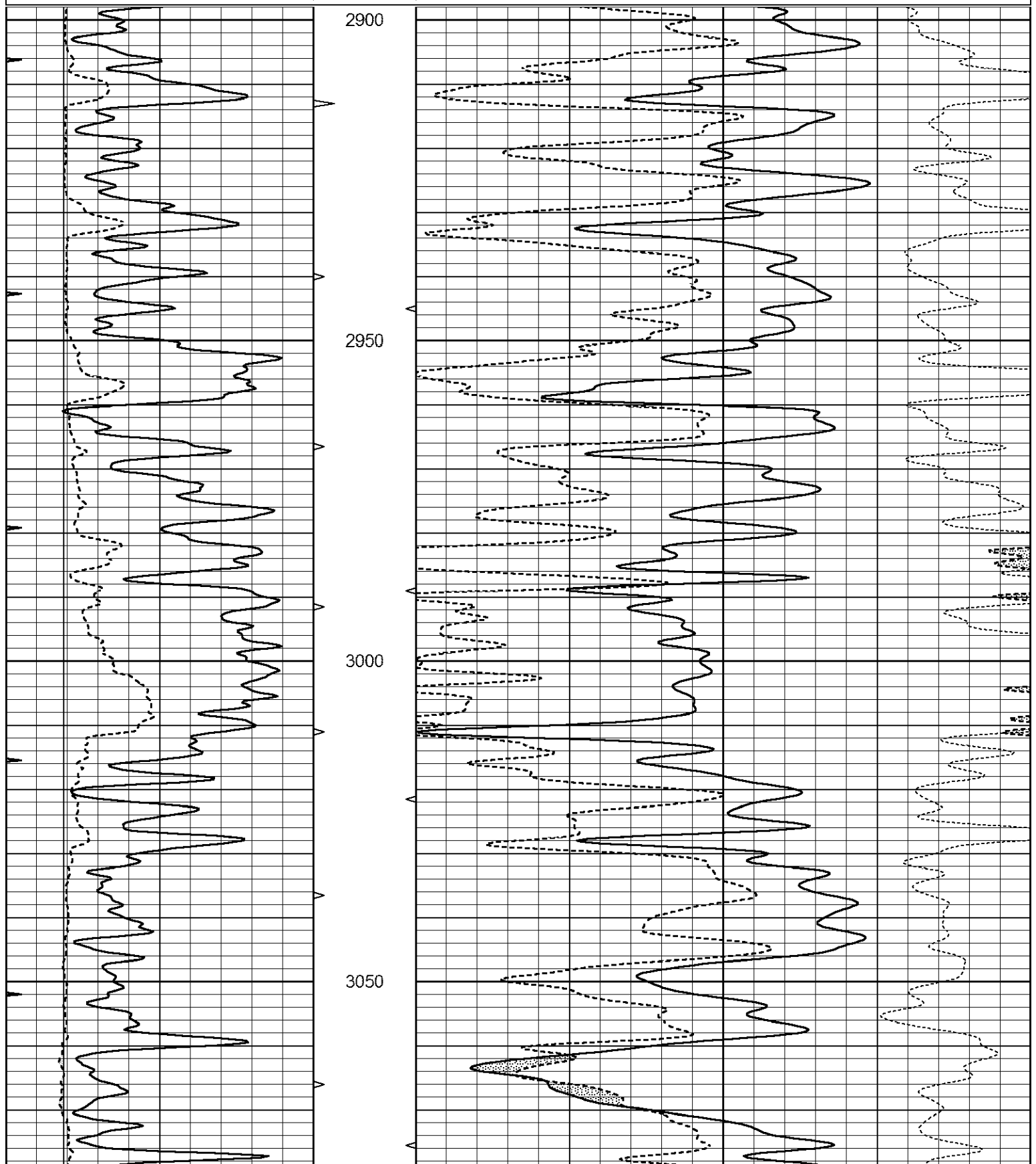
THANK YOU FOR USING ELI WIRELINE SERVICES, HAYS, KS. ( 785 ) 628-6395  
DIRECTIONS  
HAYS, KS. - 183 BYPASS & MAIN STREET - SOUTH TO MT. PLEASANT RD  
1/2 WEST - 1/2 NORTH INTO

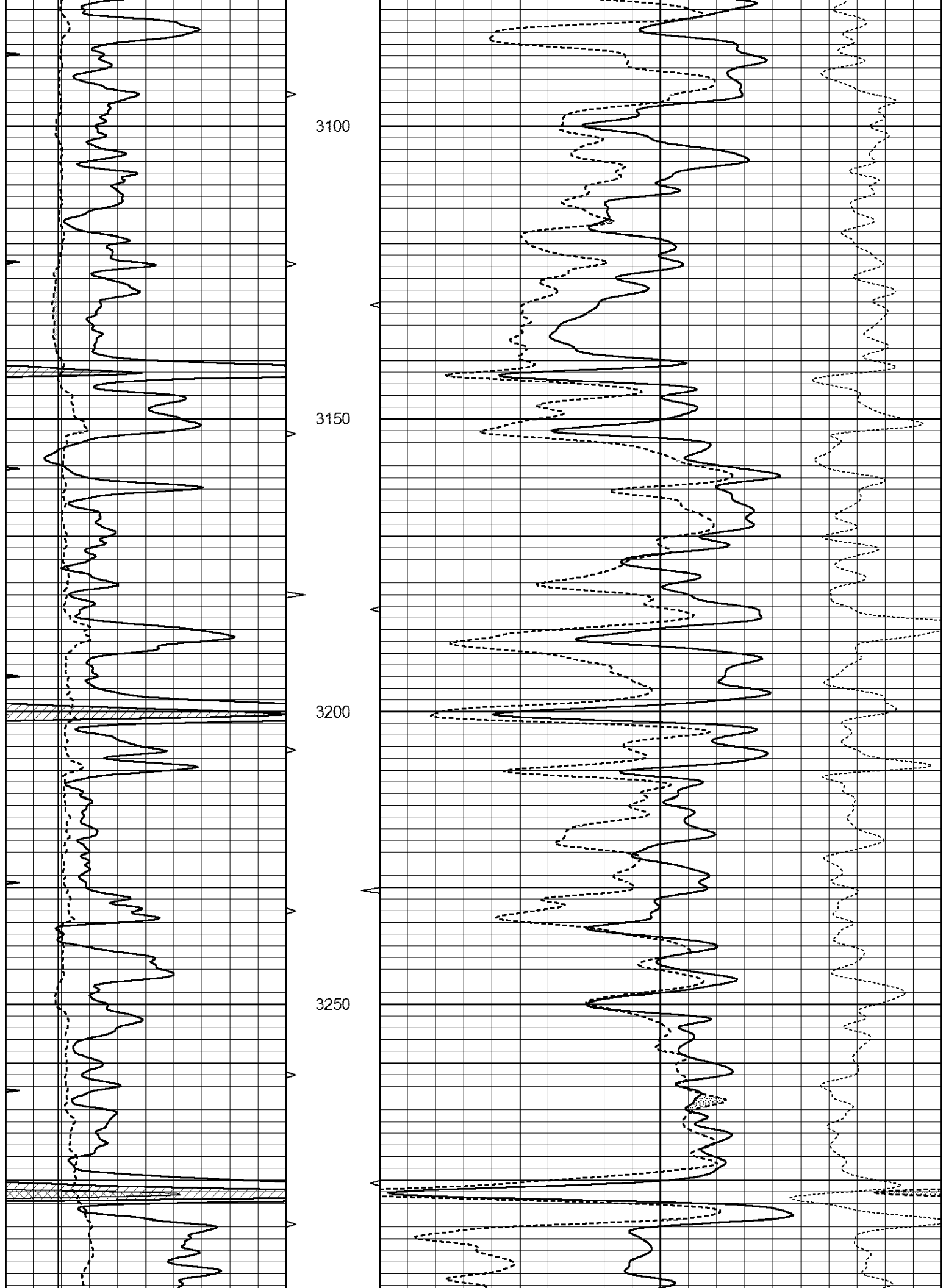


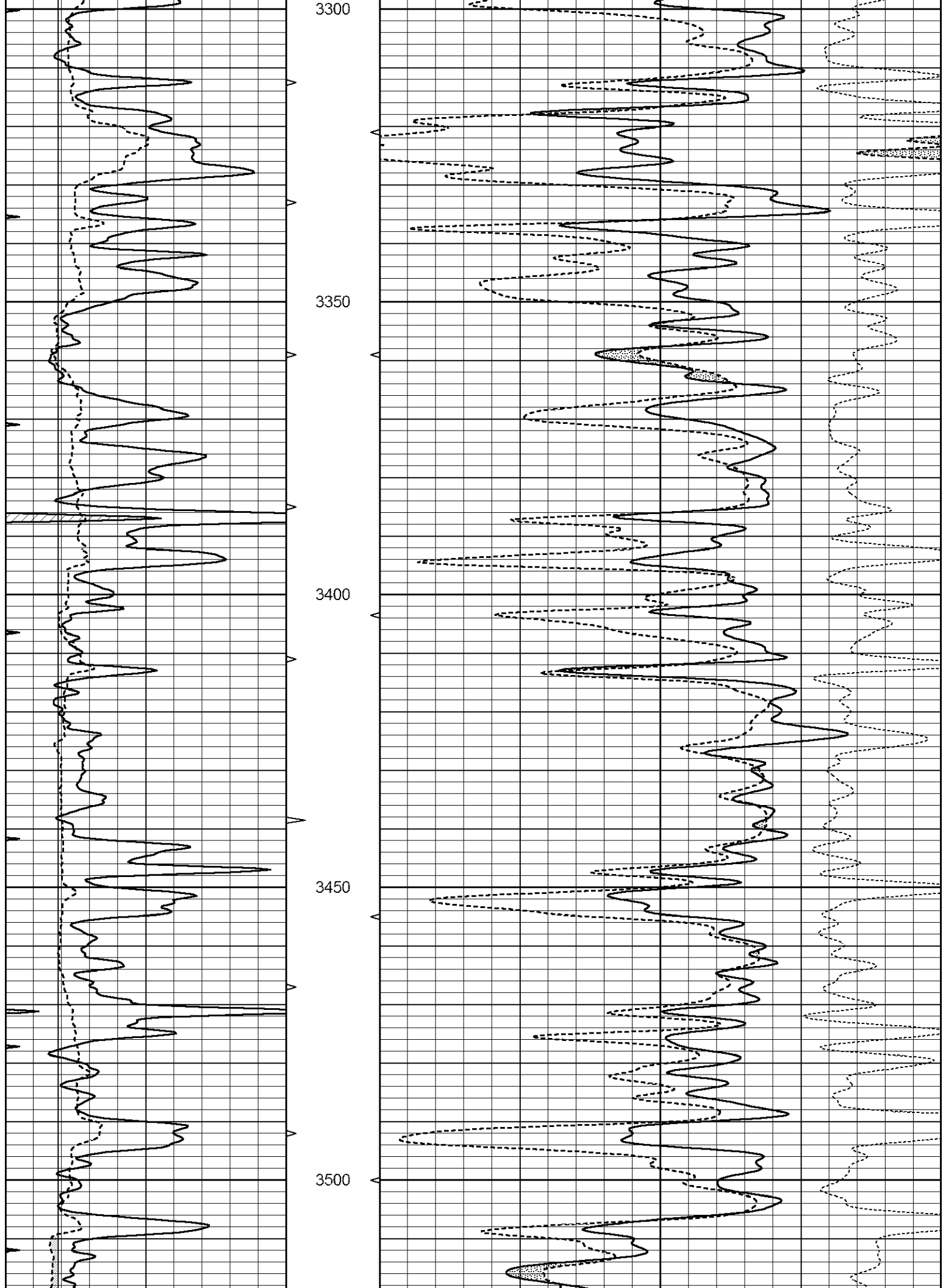
**MAIN SECTION**

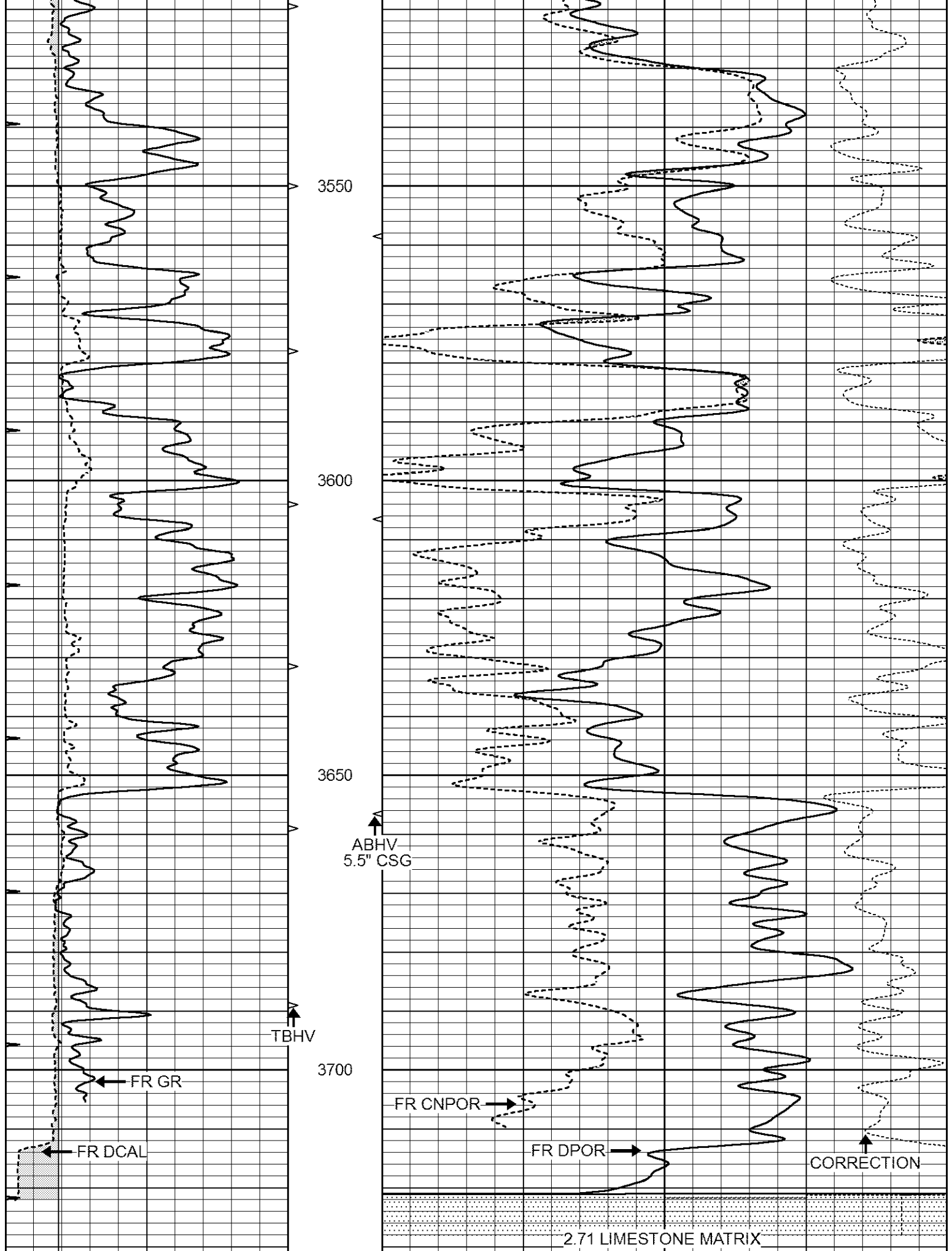
Database File 1569ddn8.db  
 Dataset Pathname pass3.1  
 Presentation Format \_den\_neu  
 Dataset Creation Tue Jul 18 13:51:50 2017  
 Charted by Depth in Feet scaled 1:240

0	GAMMA RAY (GAPI)	150	AVTX	30	COMPENSATED DENSITY (pu)	-10	
6	CALIPER (in)	16	10 (ft3)	0	30	COMPENSATED NEUTRON (pu)	-10
0	MINMK	20	BVTX		-0.25	CORRECTION (g/cc)	0.25
			0 (ft3)	10			









3550

3600

3650

3700

ABHV  
5.5" CSG

TBHV

FR GR

FR DCAL

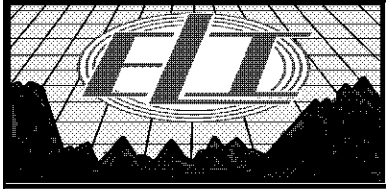
FR CNPOR

FR DPOR

CORRECTION

2.71 LIMESTONE MATRIX

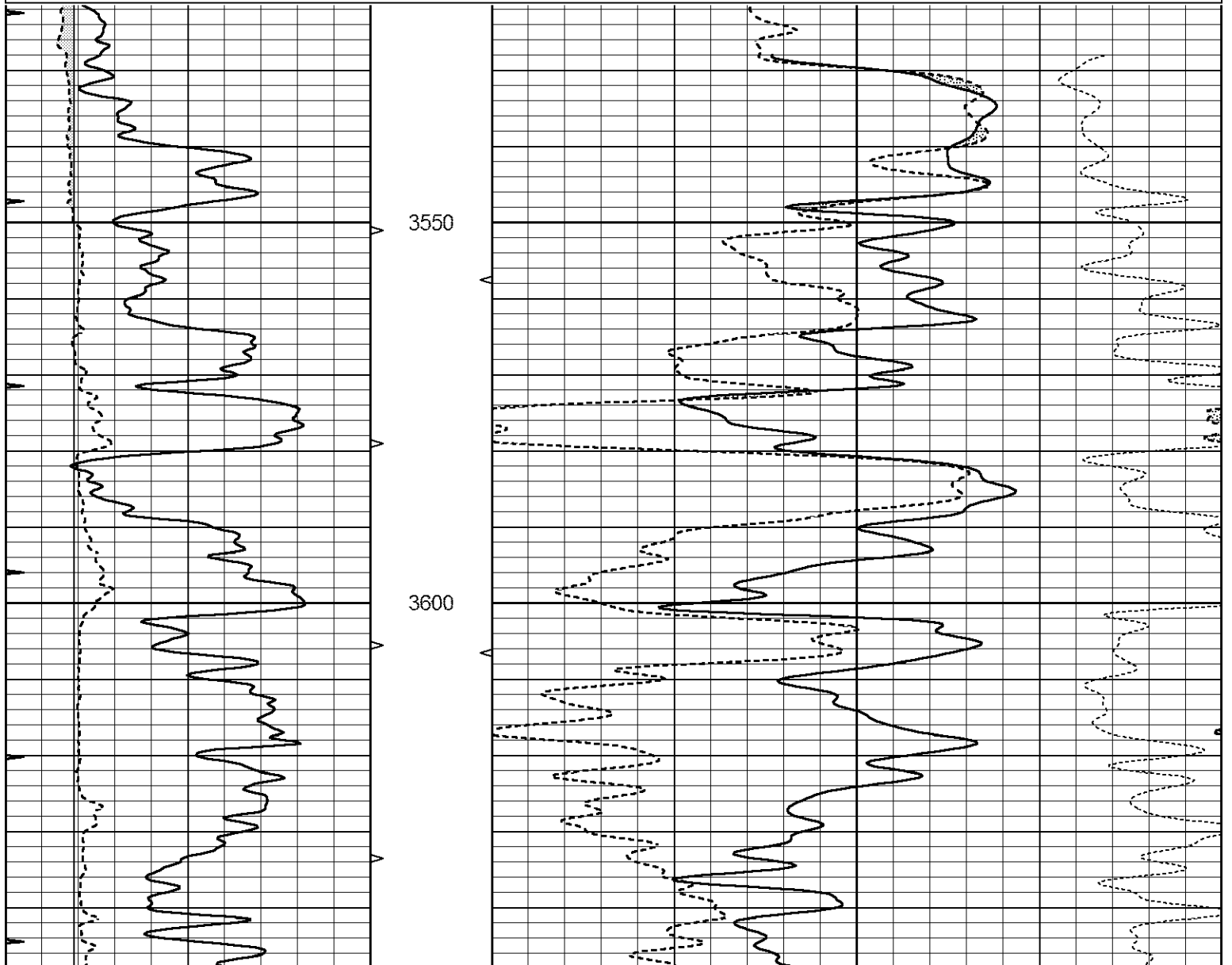
0	GAMMA RAY (GAPI)	150	AVTX	30	COMPENSATED DENSITY (pu)	-10
6	CALIPER (in)	16	10 (ft3)	0 30	COMPENSATED NEUTRON (pu)	-10
0	MINMK	20	BVTX		-0.25 CORRECTION (g/cc)	0.25
			0 (ft3)	10		

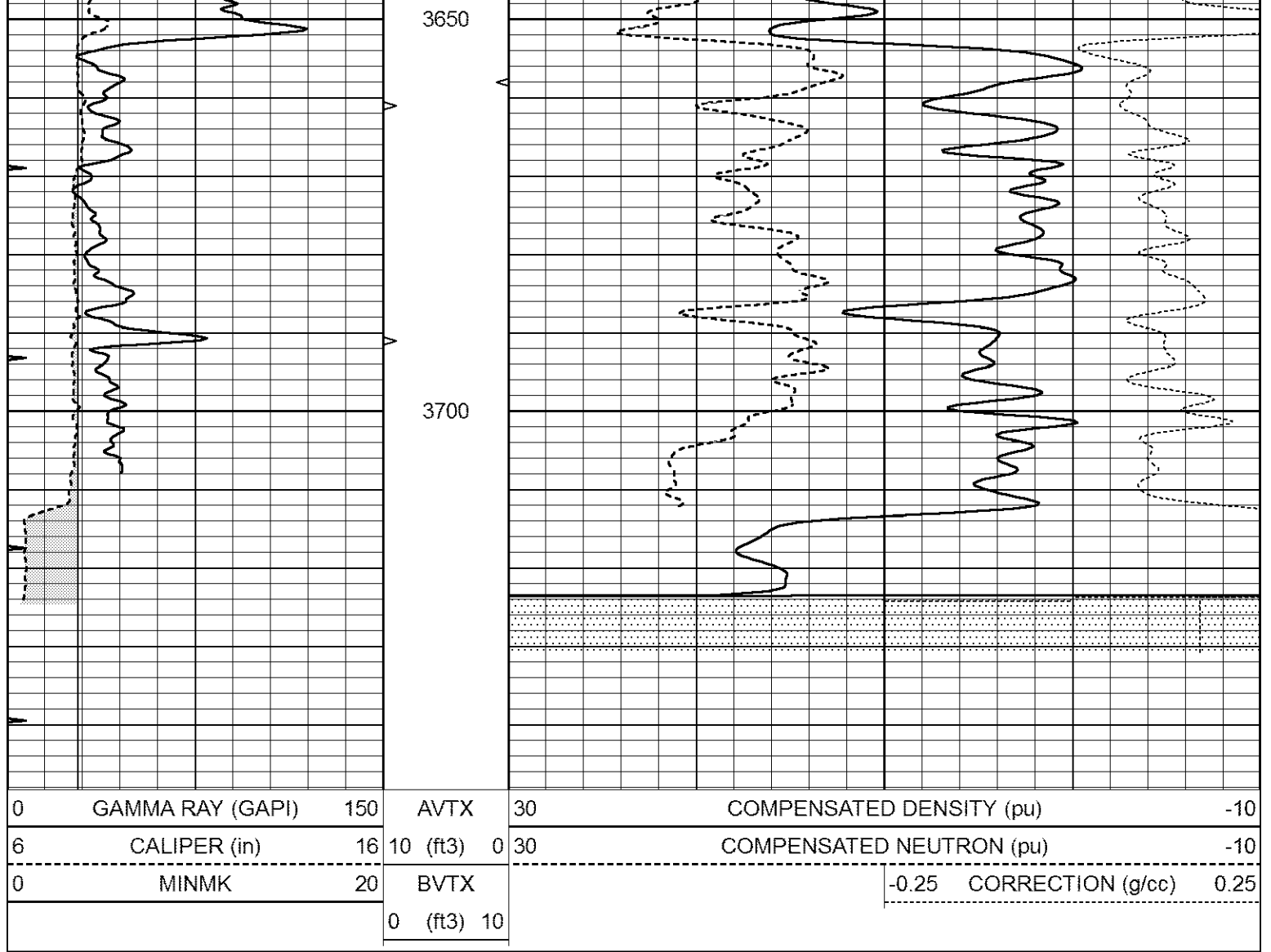


# REPEAT SECTION

Database File 1569ddn8.db  
 Dataset Pathname pass2.1  
 Presentation Format \_den\_neu  
 Dataset Creation Tue Jul 18 13:46:35 2017  
 Charted by Depth in Feet scaled 1:240

0	GAMMA RAY (GAPI)	150	AVTX	30	COMPENSATED DENSITY (pu)	-10
6	CALIPER (in)	16	10 (ft3)	0 30	COMPENSATED NEUTRON (pu)	-10
0	MINMK	20	BVTX		-0.25 CORRECTION (g/cc)	0.25
			0 (ft3)	10		





### Calibration Report

Database File      1569ddn8.db  
 Dataset Pathname    pass2.1  
 Dataset Creation    Tue Jul 18 13:46:35 2017

### Dual Induction Calibration Report

Serial-Model:                      FW1410-56-Probe  
 Surface Cal Performed:            Fri Mar 13 14:03:50 2015  
 Downhole Cal Performed:         Fri Mar 13 15:37:29 2015  
 After Survey Verification Performed:   Fri Mar 13 15:37:29 2015

#### Surface Calibration

Loop:	Readings			References			Results	
	Air	Loop	V	Air	Loop	mmho/m	m	b
Deep	0.008	0.765	V	1.000	400.000	mmho/m	527.061	-3.201
Medium	-0.056	0.761	V	1.000	464.000	mmho/m	567.187	32.510
Internal:	Zero	Cal		Zero	Cal		m	b
Deep	0.005	0.624	V	0.000	400.000	mmho/m	645.611	-3.034
Medium	0.012	0.721	V	0.000	464.000	mmho/m	653.591	-7.532

#### Downhole Calibration

	Readings			References			Results	
	Zero	Cal	V	Zero	Cal	mmho/m	m'	b'



1107.5	7124.1	8.0	15.0	0.0	6.3
--------	--------	-----	------	-----	-----

Before Survey Caliper Verification		Performed:			
	Reference	Reading			
Caliper (in)	_____	_____			

After Survey Caliper Verification		Performed:			
	Reference	Reading			
Caliper (in)	_____	_____			

Compensated Neutron Calibration Report

Serial Number:	080621PMC
Tool Model:	NABORS

PRE-SURVEY VERIFICATION				
Detector	Readings	Measured	Target	
Short Space	cps			
Long Space	cps	pu		pu

POST-SURVEY VERIFICATION				
Detector	Readings	Measured	Target	
Short Space	cps			
Long Space	cps	pu		pu

Gamma Ray Calibration Report

Serial Number:	070558	
Tool Model:	Probe1	
Performed:	Mon May 22 14:24:46 2017	
Calibrator Value:	1.0	GAPI
Background Reading:	0.0	cps
Calibrator Reading:	1.0	cps
Sensitivity:	0.4000	GAPI/cps