



DUAL COMP POROSITY LOG

Company VAL ENERGY, INC.
 Well HORINEK #1-2
 Field UNKNOWN
 County THOMAS
 State KANSAS

Company VAL ENERGY, INC.
 Well HORINEK #1-2
 Field UNKNOWN
 County THOMAS State KANSAS

Location: API #: 15-193-20977-00-00
 1951' FNL & 2205' FWL
 SEC 2 TWP 8S RGE 36W
 Permanent Datum GROUND LEVEL Elevation 3321'
 Log Measured From KELLY BUSHING
 Drilling Measured From KELLY BUSHING
 Other Services DIL/MEL
 Elevation K.B. 3331'
 D.F. N/A
 G.L. 3321'

Date	11/10/2016						
Run Number	ONE						
Type Log	CNL/CDL						
Depth Driller	4850'						
Depth Logger	4851'						
Bottom Logged Interval	4822'						
Top Logged Interval	3800'						
Type Fluid In Hole	CHEMICAL						
Salinity, PPM CL	6500						
Density	9.3						
Level	FULL						
Max. Rec. Temp. F	125						
Operating Rig Time	3 HOURS						
Equipment -- Location	91 COLBY						
Recorded By	D. SCHMIDT						
Witnessed By	TIM PRIEST						
Borehole Record							
Run No.	Bit	From	To	Size	Wgt.	From	To
ONE	12.25"	0'	263'	8.625"	23#	0'	263'
TWO	7.875"	263'	TD				
Casing Record							

<<< Fold Here >>>

All interpretations are opinions based on inferences from electrical or other measurements and Pioneer Wireline Services, LLC cannot and does not guarantee the accuracy or correctness of any interpretation, and Pioneer Wireline Services, LLC will not be liable or responsible for any loss, costs, damages, or expenses incurred or sustained by anyone resulting from any interpretation made by any of our officers, agents or employees.

Comments

N/A DENOTES NOT AVAILABLE OR NON-APPLICABLE.

LEVANT,
 6 WEST ON FRONTAGE ROAD TO 5 RD,
 2 NORTH, 1/2 EAST,
 SOUTH INTO

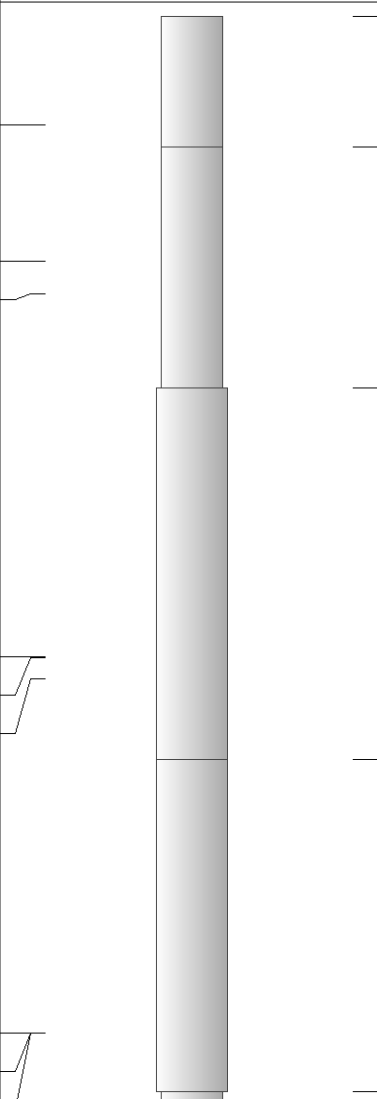
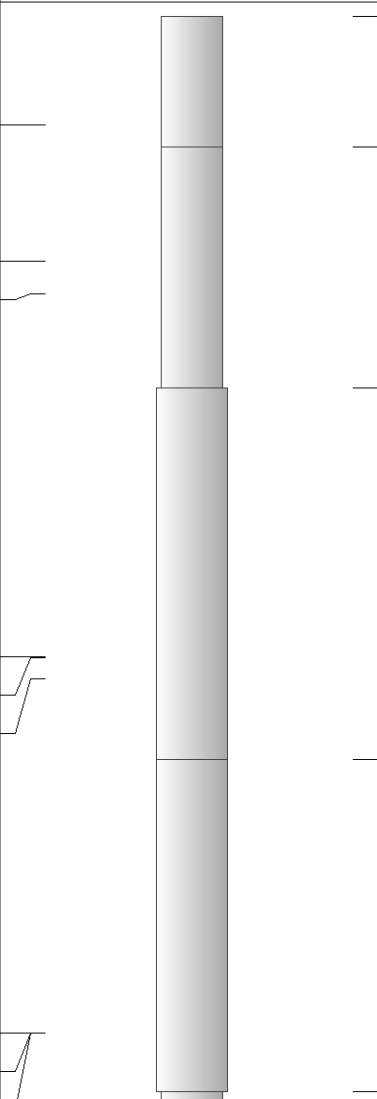
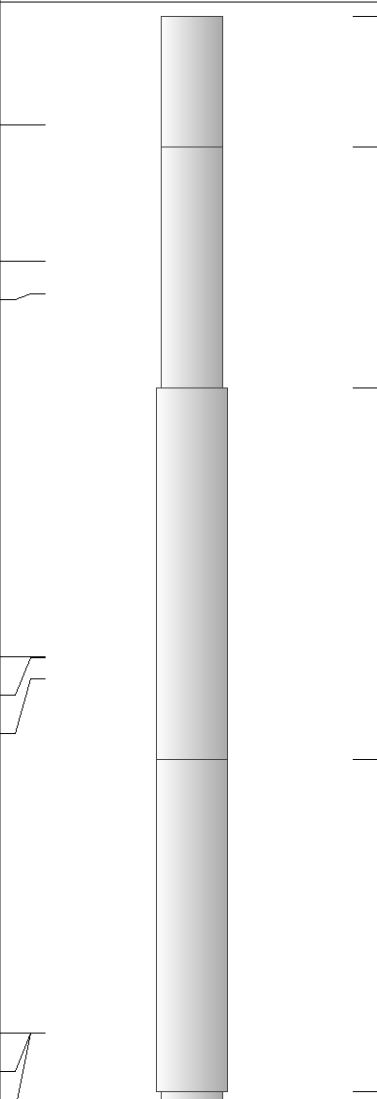
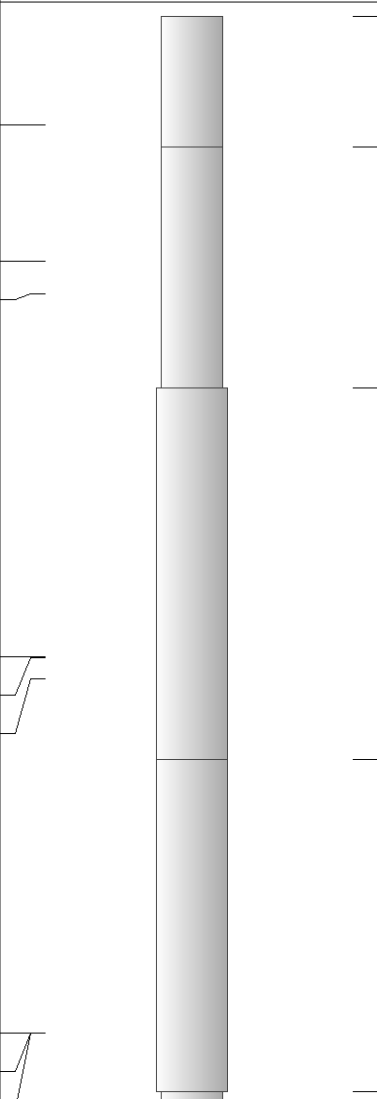
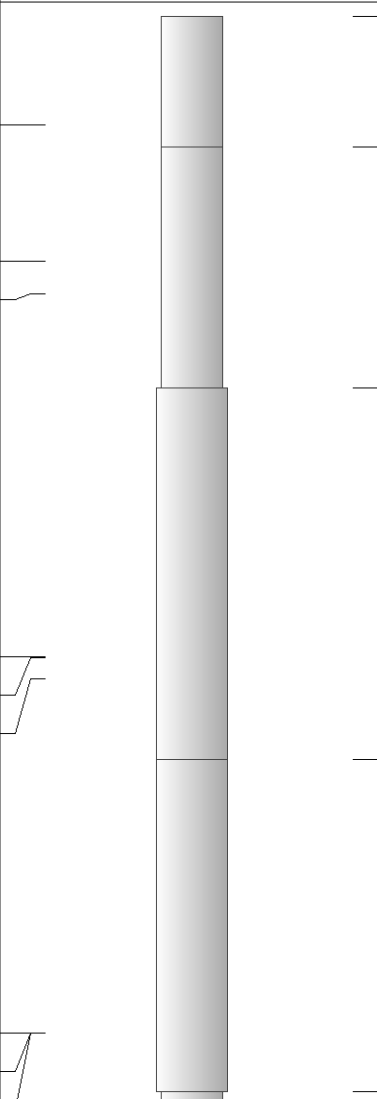
Log Measured From: KELLY BUSHING 10 Ft. Above Permanent Datum

THANK YOU FOR USING PIONEER ENERGY SERVICES
www.pioneerenergy.com 785-625-3858

Your Pioneer Energy Services Crew		This Log Record Was Witnessed By	
Engineer: D. SCHMIDT	Operator:	Primary Witness: TIM PRIEST	Secondary Witness:
Operator:	Operator:	Secondary Witness:	Secondary Witness:
Operator:		Secondary Witness:	

Top - Bottom

M	A	SZCOR	NPORSEL	FLUIDDEN g/cc	MATRXDEN g/cc	SPSHIFT mV	SNDERRM mmho/m
2	1	Off	Limestone	1	2.71	-120	0
SNDERR mmho/m	SRFTEMP degF	CASETHCK in	CASEOD in	PERFS	TDEPTH ft	BOTTEMP degF	BOREID in
0	40	0	5.5	0	4851	125	7.875

Sensor	Offset (ft)	Schematic	Description	Length (ft)	O.D. (in)	Weight (lb)
GR	40.58		GR-M&W (89)	3.00	3.50	50.00
CNLSC CNSSC	37.48 36.73		CNT-M&W (207-MW)	5.50	3.50	100.00
LSD DCAL SSD	28.43 28.42 27.93		CDL-M&W (90-1031)	8.50	4.00	250.00
MCAL MI MN	19.83 19.83 19.83		ML-PSIML (PSI-01) GO Micro log tools converted to Simplec electronics	7.58	4.00	65.00
RLL3F RLL3	15.80 15.80					

CILD 8.00

CILM 4.70

SP 0.20

DIL-M&W-75 (PSI 75)

18.50

3.50

220.00

Dataset: val_horinek_1-12.db: field/well/stkml/pass3.6
 Total length: 43.08 ft
 Total weight: 685.00 lb
 O.D.: 4.00 in

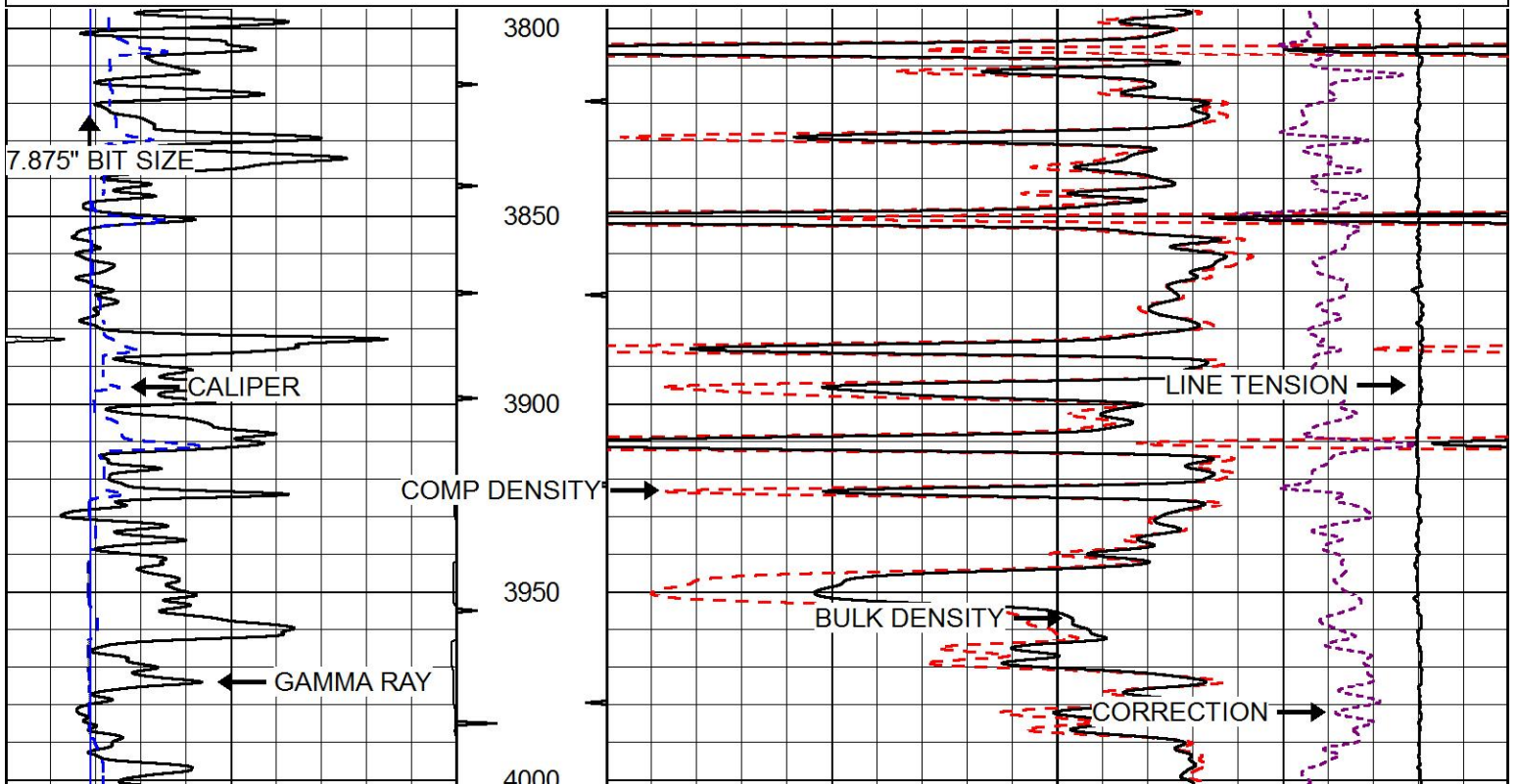
PIONEER
 Pioneer Energy Services

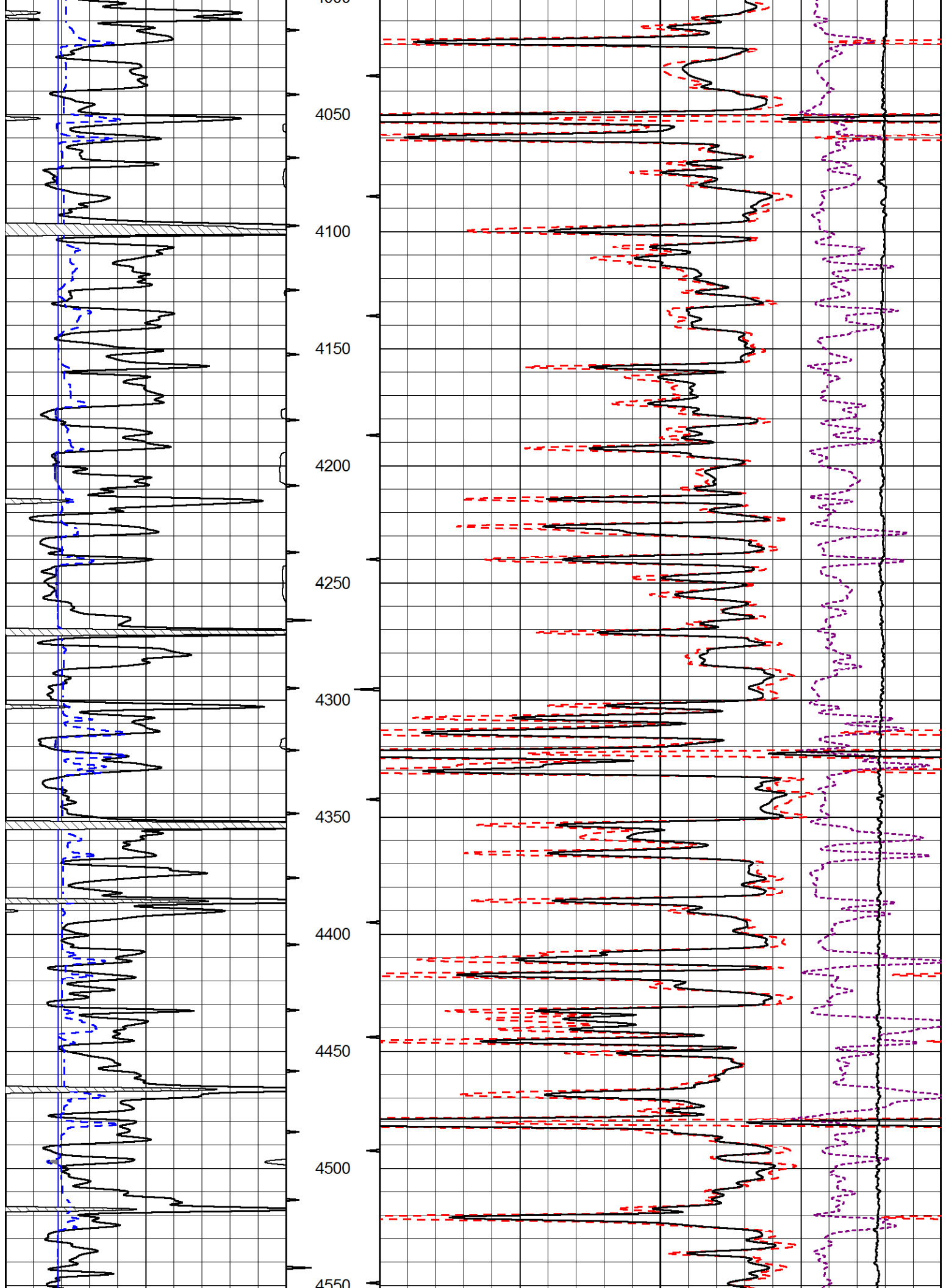
MAIN PASS

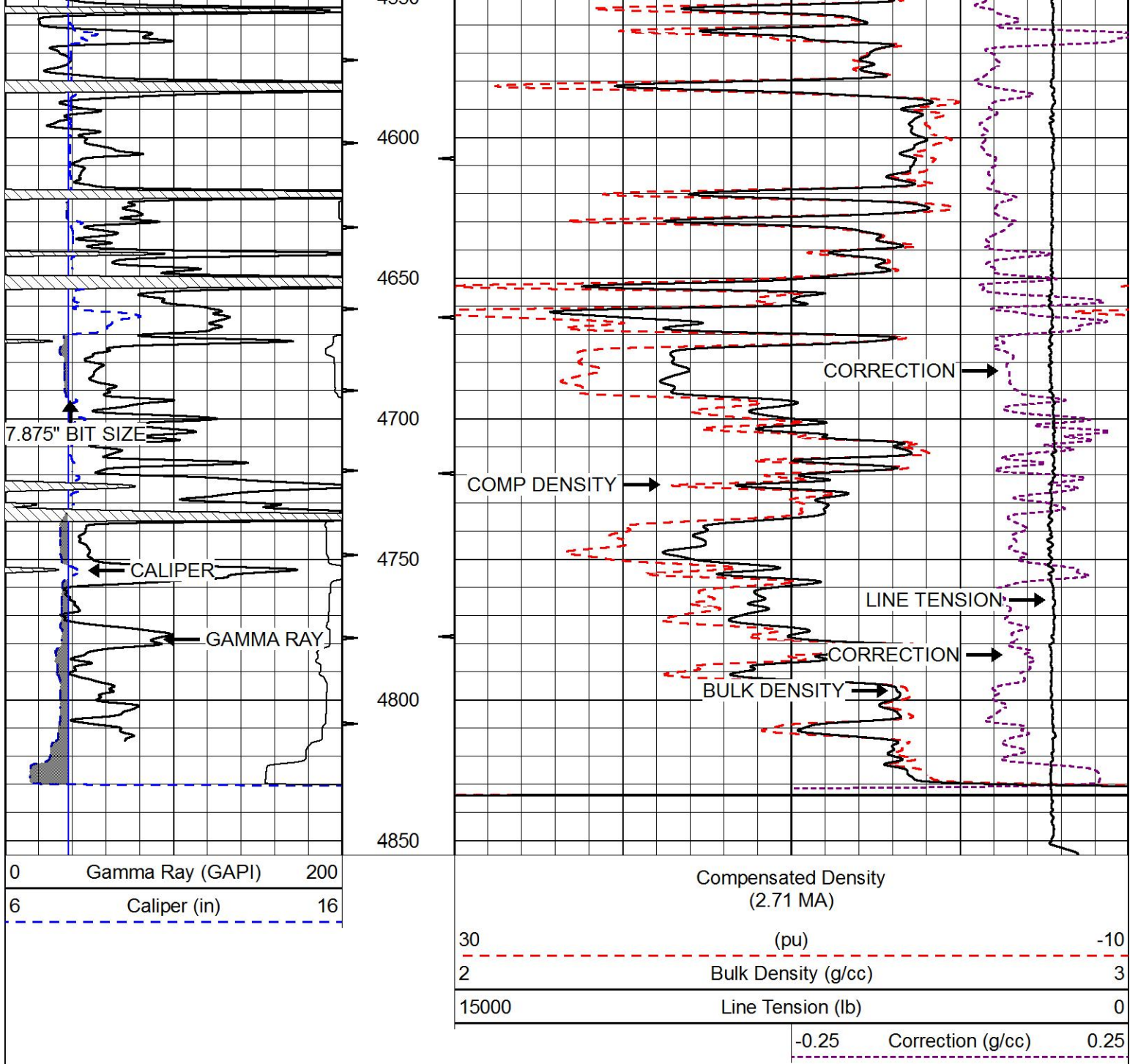
Database File val_horinek_1-12.db
 Dataset Pathname stkml/pass3.6
 Presentation Format cdl
 Dataset Creation Thu Nov 10 01:43:11 2016
 Charted by Depth in Feet scaled 1:600

0	Gamma Ray (GAPI)	200
6	Caliper (in)	16

30	Compensated Density (2.71 MA)	(pu)	-10	
2	Bulk Density (g/cc)		3	
15000	Line Tension (lb)		0	
		-0.25	Correction (g/cc)	0.25





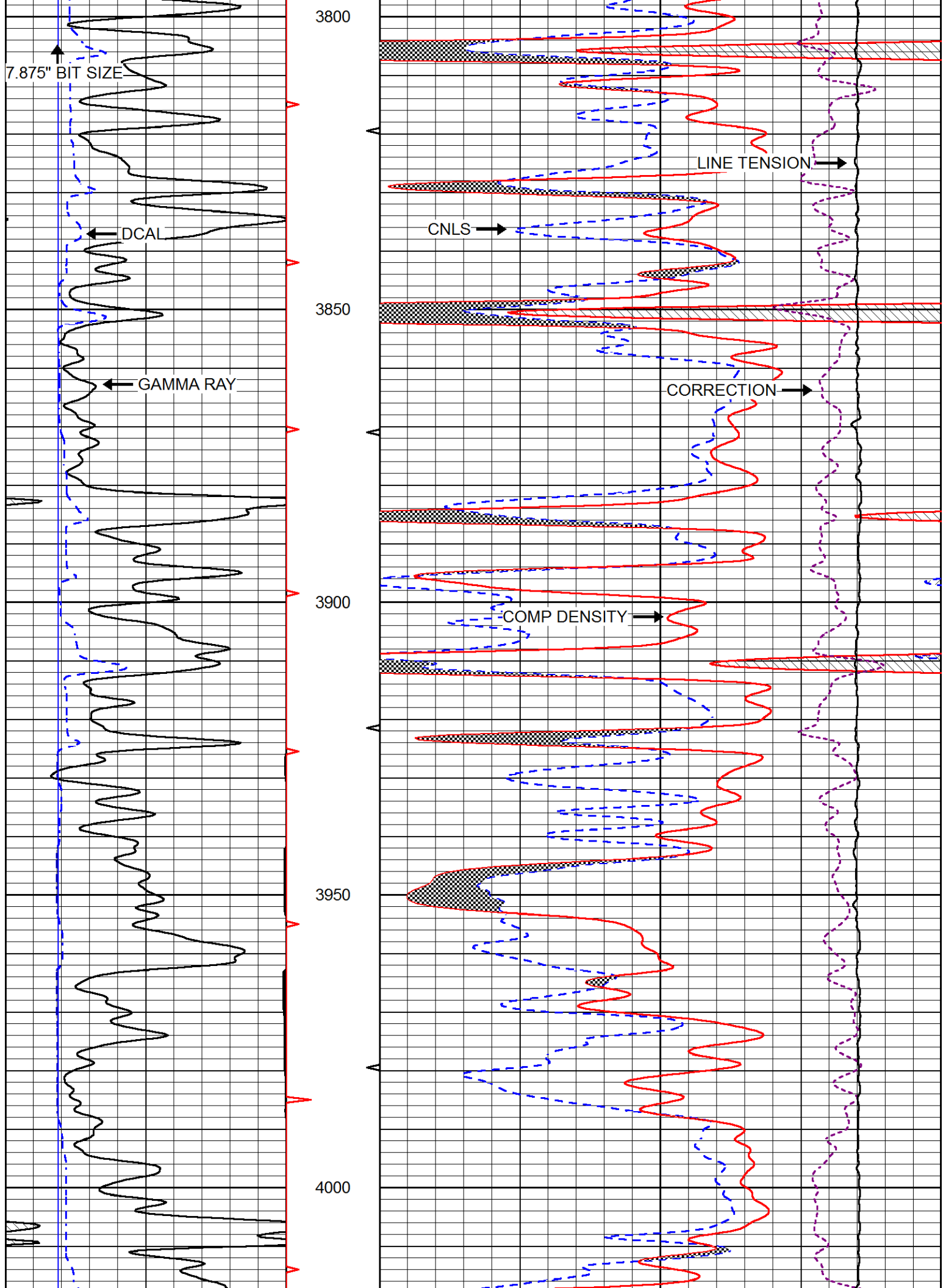


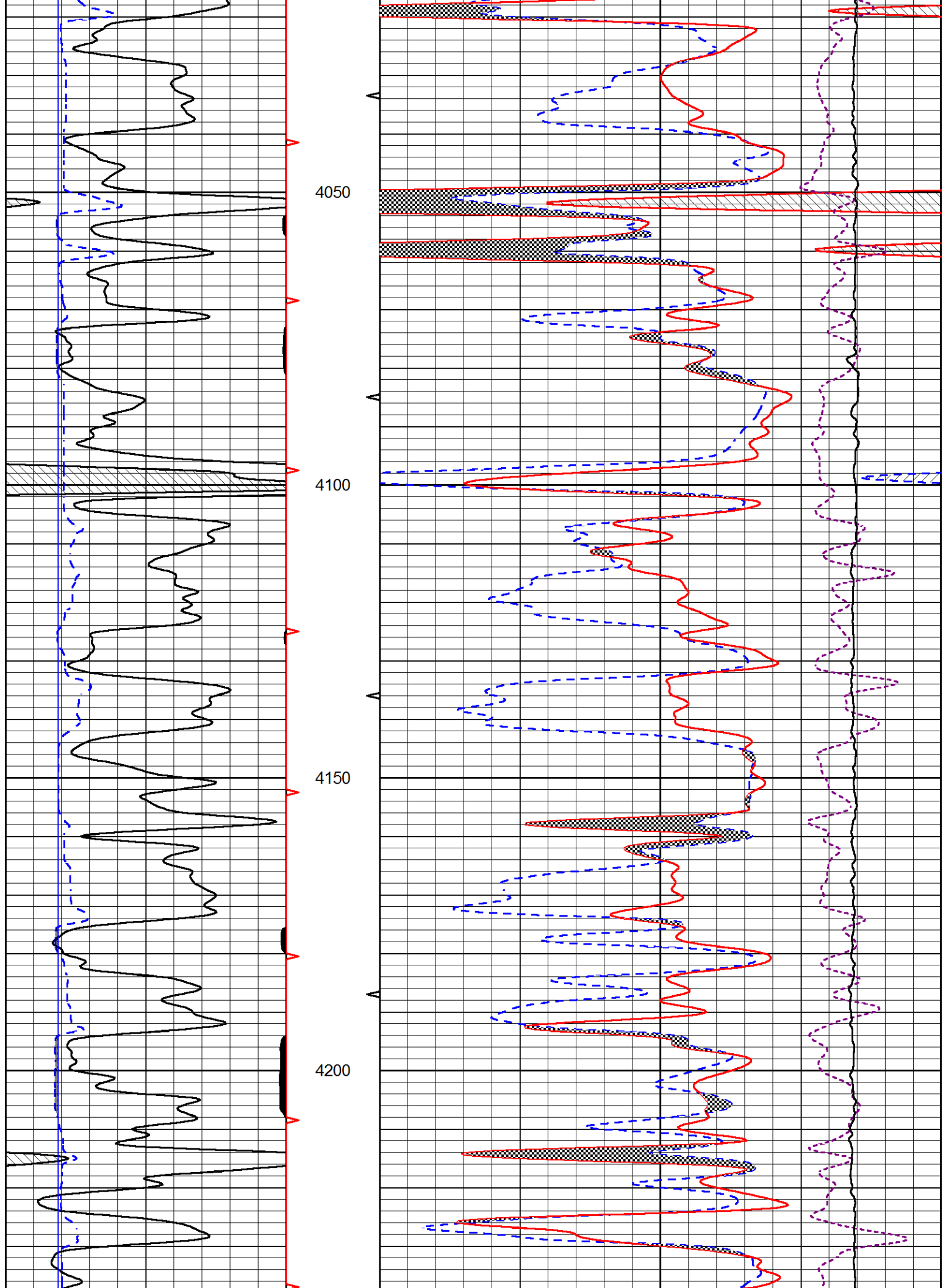
MAIN PASS

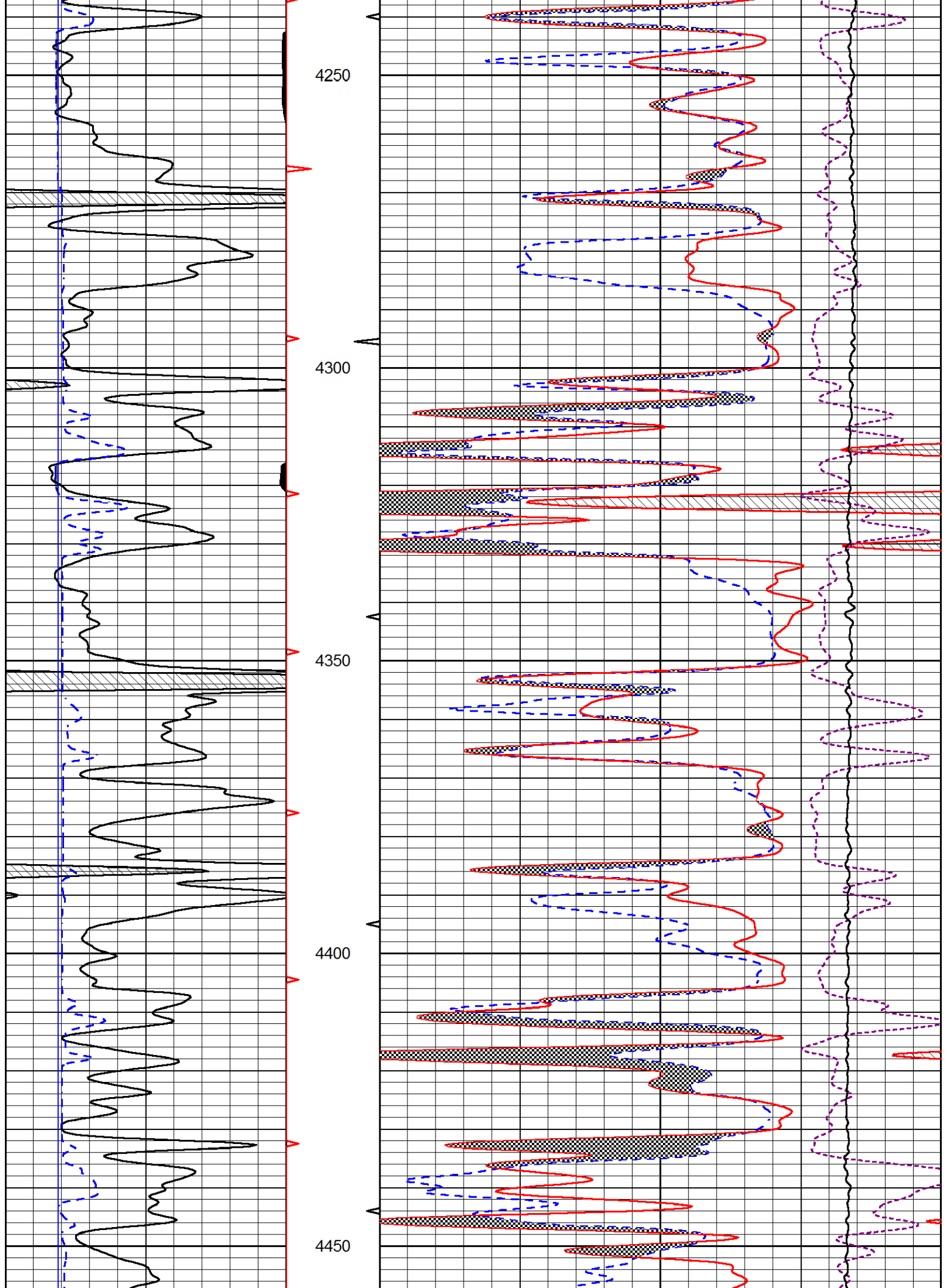
Database File val_horinek_1-12.db
 Dataset Pathname stkml/pass3.6
 Presentation Format cndlspec
 Dataset Creation Thu Nov 10 01:43:11 2016
 Charted by Depth in Feet scaled 1:240

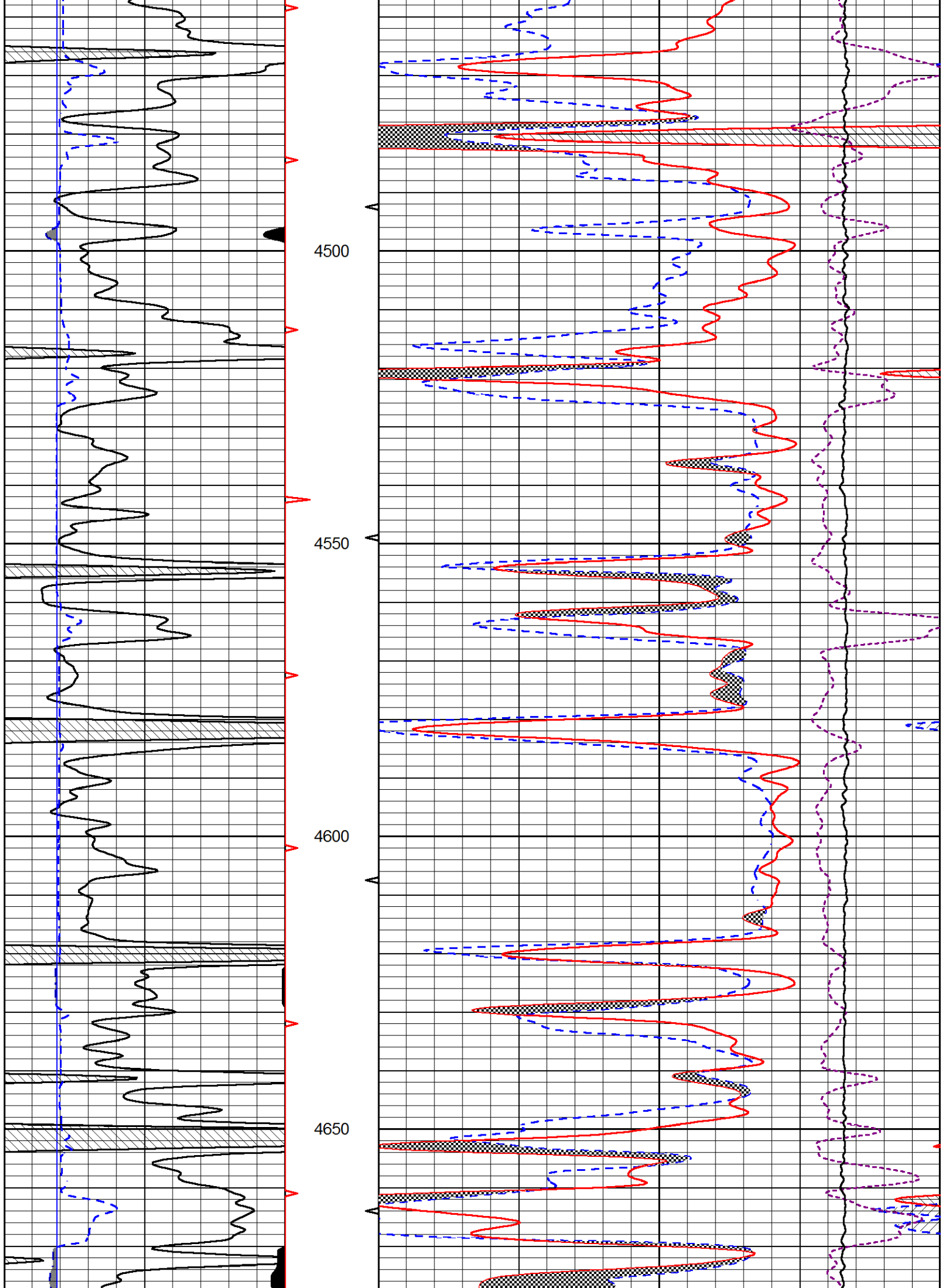
0	Gamma Ray (GAPI)	150
6	DCAL (in)	16

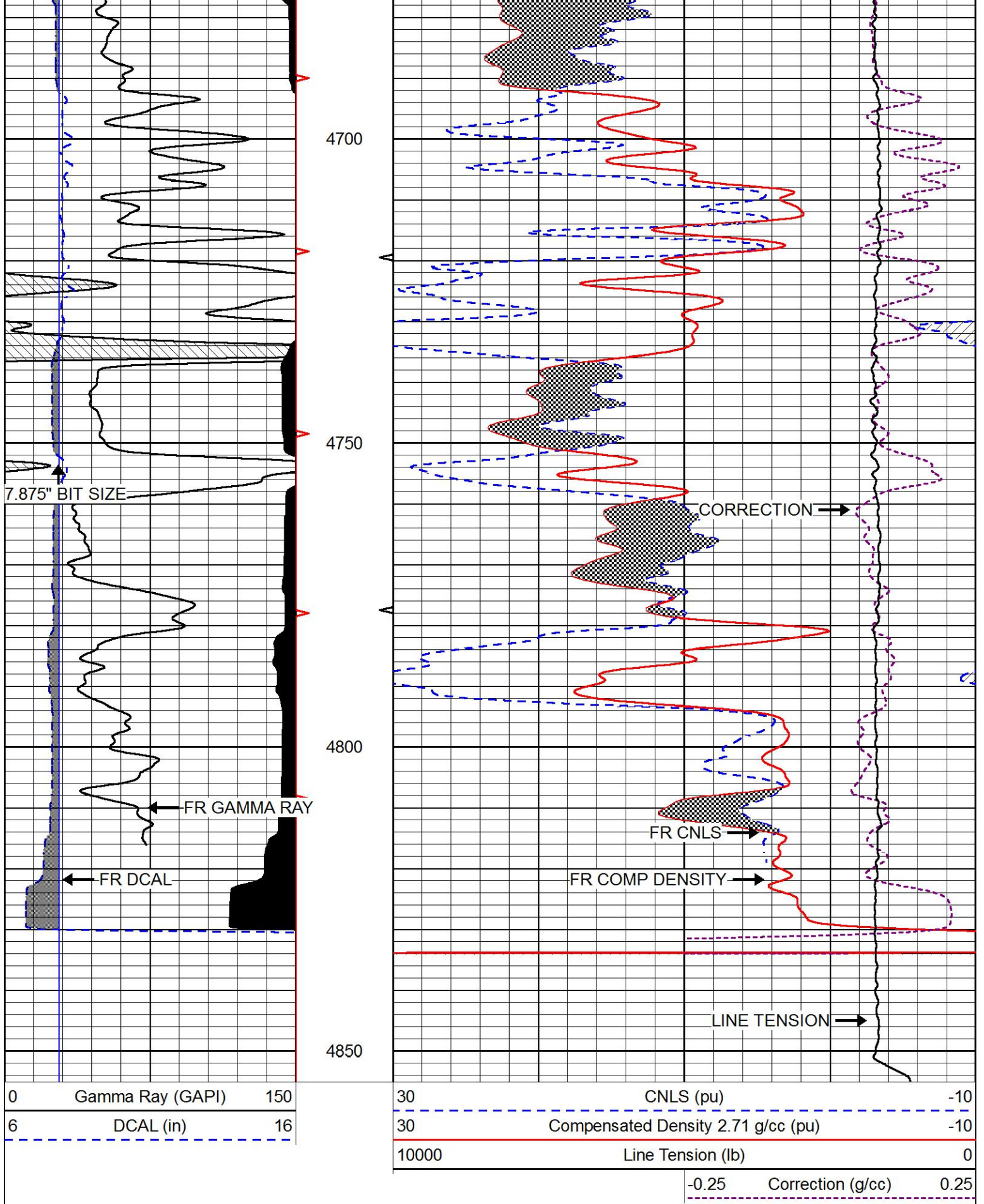
30	CNLS (pu)	-10
30	Compensated Density 2.71 g/cc (pu)	-10
10000	Line Tension (lb)	0
-0.25	Correction (g/cc)	0.25









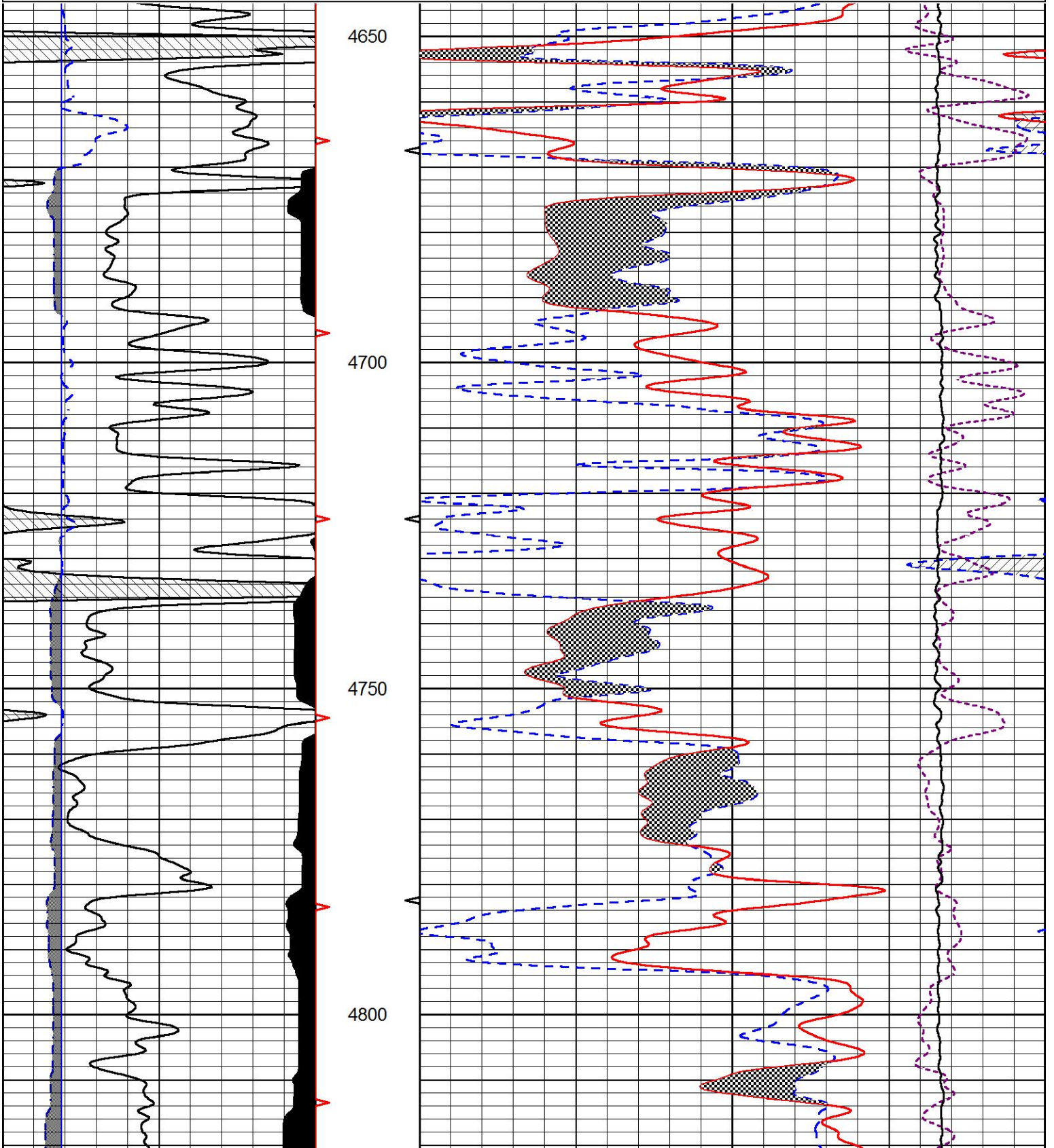


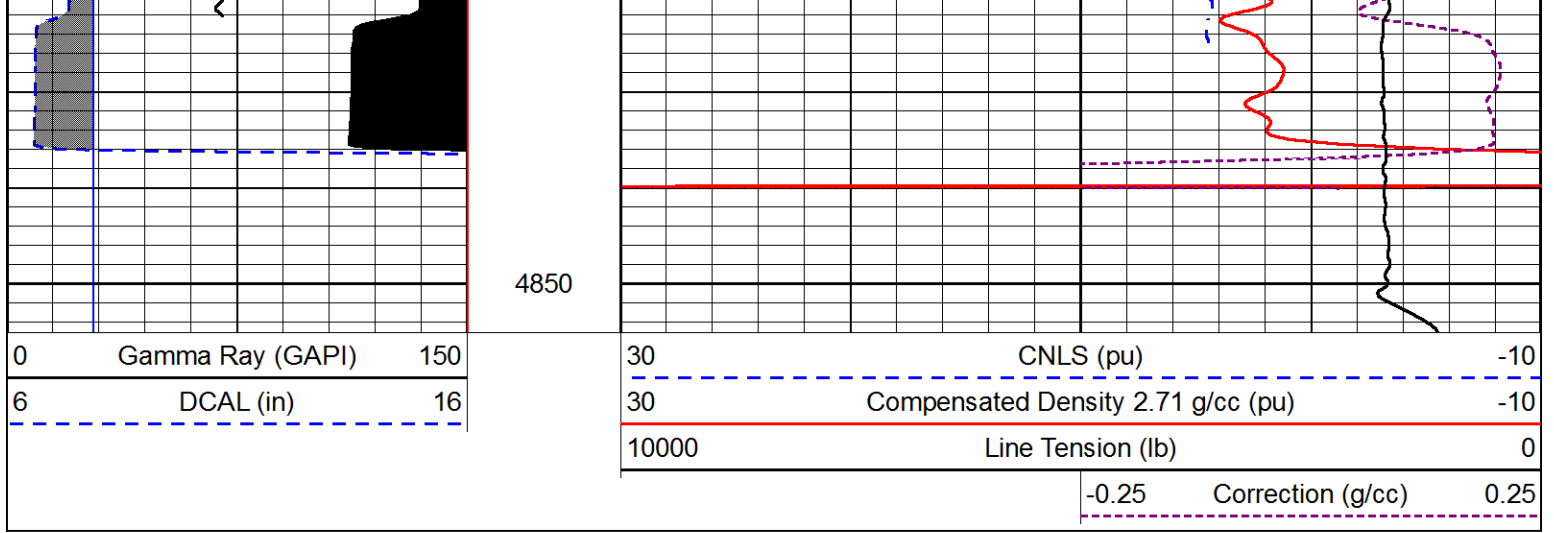
REPEAT SECTION

Database File val_horinek_1-12.db
 Dataset Pathname stkml/pass2.1
 Presentation Format cndlspec
 Dataset Creation Thu Nov 10 01:52:25 2016
 Charted by Depth in Feet scaled 1:240

0	Gamma Ray (GAPI)	150
6	DCAL (in)	16

30	CNLS (pu)	-10
30	Compensated Density 2.71 g/cc (pu)	-10
10000	Line Tension (lb)	0
	-0.25 Correction (g/cc)	0.25





Calibration Report

Database File val_horinek_1-12.db
 Dataset Pathname stkml/pass3.6
 Dataset Creation Thu Nov 10 01:43:11 2016

Dual Induction Calibration Report

Serial-Model: PSI 75-M&W-75
 Calibration Performed: Mon Nov 03 10:20:39 2014

Loop:	Readings		References			Results	
	Air	Loop	Air	Loop		Gain	Offset
Deep	166.796	835.089	0.000	255.800	mmho/m	0.620	-45.500
Medium	142.009	1348.560	0.000	255.800	mmho/m	0.600	-15.000

Microlog Calibration Report

Serial-Model: PSI-01-PSIML
 Performed: Thu Sep 29 18:47:00 2016

	Readings		References			Results	
	Zero	Cal	Zero	Cal		m	b
Normal	0.0000	1.0000	0.0000	1.0000	Ohm-m	50000.0000	-0.8000
Inverse	0.0000	1.0000	0.0000	1.0000	Ohm-m	57500.0000	-0.5000
Caliper	1.0001	1.1397	6.5000	18.5000	in	70.0000	-65.6500

Compensated Density Calibration Report

Serial-Model: 90-1031-M&W
 Source / Verifier: 16955B / 2ci
 Master Calibration Performed: Sun Oct 23 06:26:18 2016

Master Calibration

	Density		Far Detector	Near Detector	
Magnesium	1.755	g/cc	5174.18	6425.27	cps
Aluminum	2.665	g/cc	963.17	4037.42	cps

Spine Angle = 74.55

Density/Spine Ratio = 0.522

	Size		Reading
Small Ring	6.00	in	1.83
Large Ring	16.00	in	1.48

Compensated Neutron Calibration Report

Serial Number: 207-MW
 Tool Model: M&W
 Calibration Performed: Wed Sep 28 10:30:30 2016

Detector	Readings	Target	Normalization
Short Space	6240.00 cps	1000.00 cps	1.6025
Long Space	460.00 cps	1000.00 cps	1.9500

Gamma Ray Calibration Report

Serial Number: 89
 Tool Model: M&W
 Calibration Performed: Thu Nov 10 00:16:26 2016

Calibrator Value: 1.0 GAPI

Background Reading: 0.0 cps
 Calibrator Reading: 1.0 cps

Sensitivity: 1.0800 GAPI/cps



Company VAL ENERGY, INC.
 Well HORINEK #1-2
 Field UNKNOWN
 County THOMAS
 State KANSAS