



**MIDWEST SURVEYS**  
 LOGGING - PERFORATING - CONSULTING SERVICES  
 P.O. Box 66, OSAWATOMIE, KS 66064  
 913.755.2128

**GAMMA RAY / NEUTRON / CCL**

File No:

Company: TDR Construction, Inc  
 Well: McCoy No. 9-W  
 Field: Paola - Rantoul  
 County: Franklin State: Kansas

Location: 2970' FSL & 1390' FEL  
 E2-SE-SW-NE  
 Other Services: Perforate

Sec. 32 Typ. 15s Rge. 21e  
 Permanent Datum: GL Elevation: 1039'  
 Log Measured From: GL  
 Drilling Measured From: GL

Date	10-08-2016
Run Number	One
Depth Driller	340.0
Depth Logger	773.8
Bottom Logged Interval	777.8
Top Log Interval	20.0
Fluid Level	Full
Type Fluid	Water
Density / Viscosity	NA
Salinity - PPM Cl	NA
Max Recorded Temp	NA
Estimated Cement Top	0.0
Equipment No.	107
Location	Cassatonia
Recorded By	Steve Winkisch
Witnessed By	Lance Town

BORE-HOLE RECORD				CASINGS RECORD			
RUN No.	BIT FROM	TO	SIZE	WGT.	FROM	TO	
One	9.785"	20.0	6.25"	44.0#	0.0	20.0	
Two	5.625"	20.0	2.875"	6.5#	0.0	313.0	
			Baffle	Set	At	780.0	

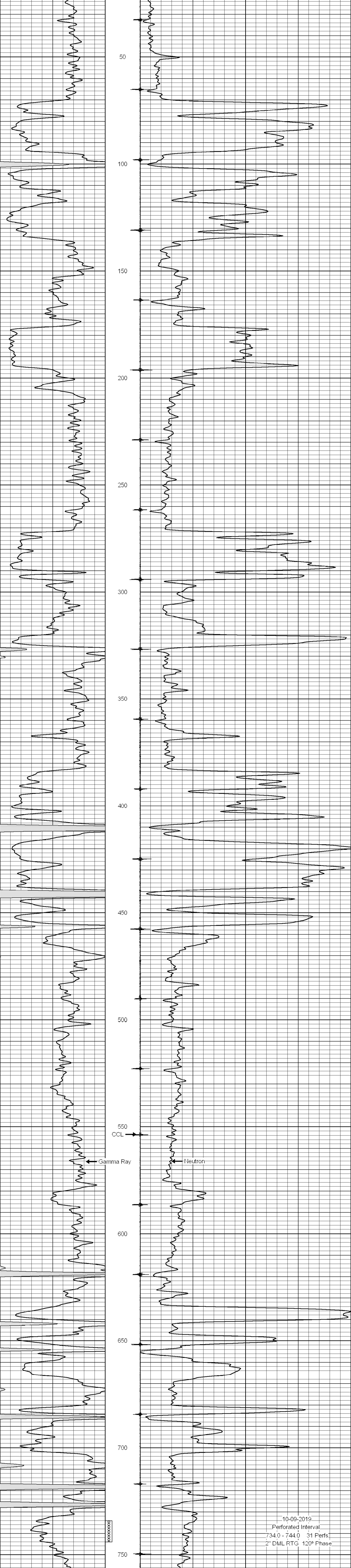
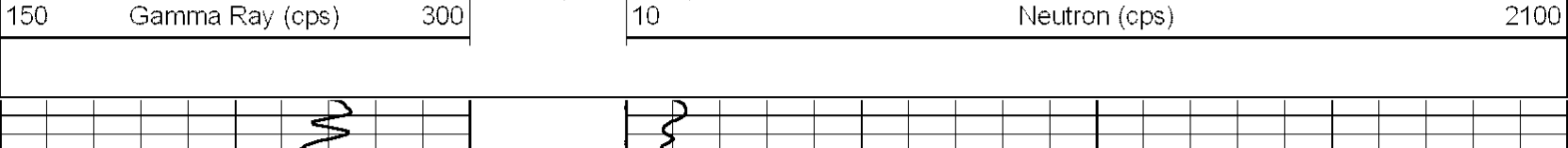
<<< Fold Here >>>

All interpretations are opinions based on inferences from electrical or other measurements and we cannot and do not guarantee the accuracy or correctness of any interpretation, and we shall not, except in the case of gross or willful negligence on our part, be liable or responsible for any loss, costs, damages, or expenses incurred or sustained by anyone resulting from any interpretation made by any of our officers, agents or employees. These interpretations are also subject to our general terms and conditions set out in our current Price Schedule.

Comments

Drilling Contractor :  
 TDR Construction, Inc.

Database File: mocoy 9w.db  
 Dataset Pathname: pass1  
 Presentation Format: gr-n-ccl  
 Dataset Creation: Tue Oct 08 08:46:24 2019 by Log SCH 111116  
 Charted by: Depth in Feet scaled 1:240



10-09-2019  
 Perforated Interval  
 734.0 - 744.0 31 Perfs  
 2" DML RTG 120° Phase

