



Field Service

P.O. BOX 438
Haysville, KS 67060

CEMENT BOND LOG

Company K-BAR OIL
Well KREHBIEL #1
Field RICK
County BARTON
State KANSAS

Company K-BAR OIL
Well KREHBIEL #1
Field RICK
County BARTON
State KANSAS

Location 1080' FNL & 825' FWL
SEC. 13 TWP. 19S RGE. 11W
Permanent Datum GROUND LEVEL Elevation 1777
Log Measured From KELLY BUSHING 5' AGL
Drilling Measured From KELLY BUSHING
Other Services
Elevation
K.B. 1782
D.F.
G.L. 1777

Date	07-18-2019		07-18-2019		
Run Number	ONE	ONE	ONE		
Depth Driller	3443				
Depth Logger	3372		1400		
Bottom Logged Interval	3371		1399		
Top Log Interval	2152		1300		
Open Hole Size					
Type Fluid	WATER				
Density / Viscosity					
Max. Recorded Temp.					
Estimated Cement Top	2352				
Time Well Ready					
Time Logger on Bottom					
Equipment Number	405				
Location	GREAT BEND				
Recorded By	LEE BRETZ				
Witnessed By	MR. MIKE KELSO				
Borehole Record			Tubing Record		
Run Number	Bit	From	To	Size	Weight
					From
					To
Casing Record	Size	Wgt/Ft	Top	Bottom	
Surface String	8.625		0	326	
Prot. String					
Production String	5.5		0		
Liner					

<<< Fold Here >>>

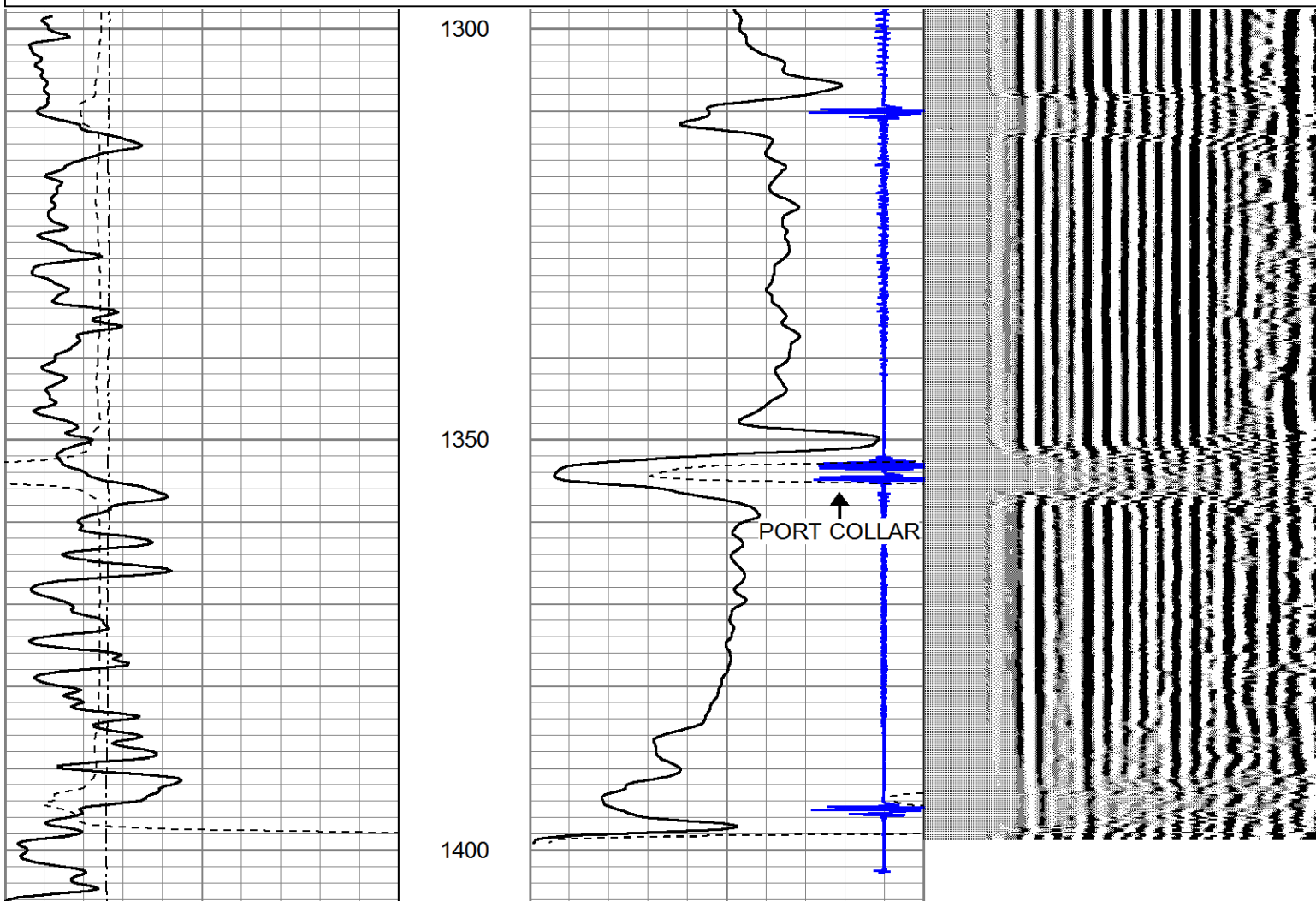
All interpretations are opinions based on inferences from electrical or other measurements and we cannot and do not guarantee the accuracy or correctness of any interpretation, and we shall not, except in the case of gross or willful negligence on our part, be liable or responsible for any loss, costs, damages, or expenses incurred or sustained by anyone resulting from any interpretation made by any of our officers, agents or employees. These interpretations are also subject to our general terms and conditions set out in our current Price Schedule.

Comments

THANK YOU FOR USING GRESSEL OIL FIELD SERVICE!

Database File: krehbeil1.db
 Dataset Pathname: pass4
 Presentation Format: cbl02
 Dataset Creation: Thu Jul 18 12:26:38 2019 by Log 7.0 B1
 Charted by: Depth in Feet scaled 1:240

0	Gamma Ray (GAPI)	150	9	Collar Locator	-1	200	VARIABLE DENSITY	1200
320	TT3 (usec)	120	0	Amplitude (mV)	100			
0	LTEN (lb)	2000	0	X5 Amplitude (mV)	20			



0	Gamma Ray (GAPI)	150	9	Collar Locator	-1	200	VARIABLE DENSITY	1200
320	TT3 (usec)	120	0	Amplitude (mV)	100			
0	LTEN (lb)	2000	0	X5 Amplitude (mV)	20			

WESSEL OIL 
 Field Service
 P.O. BOX 438
 Haysville, KS 67060

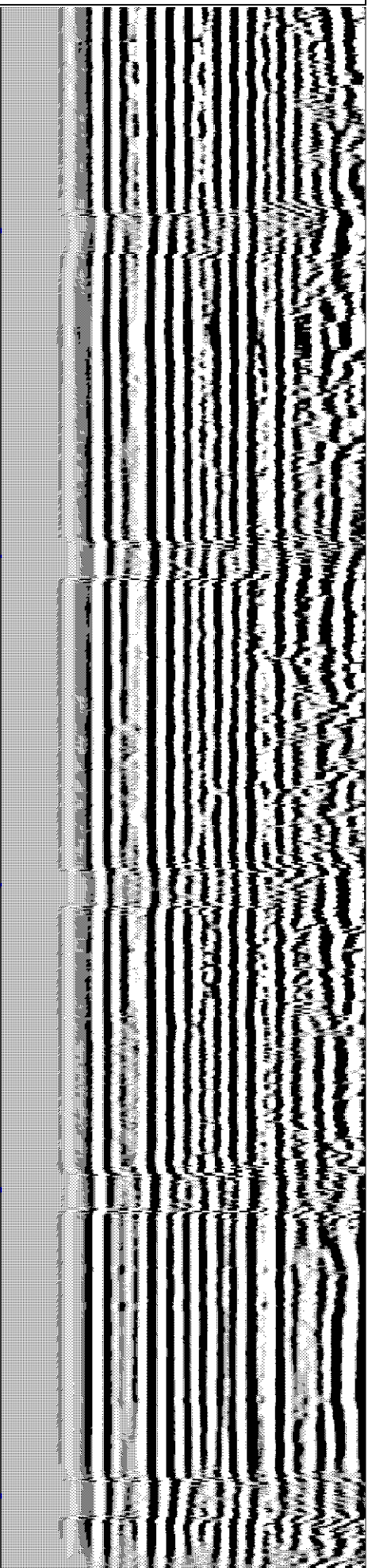
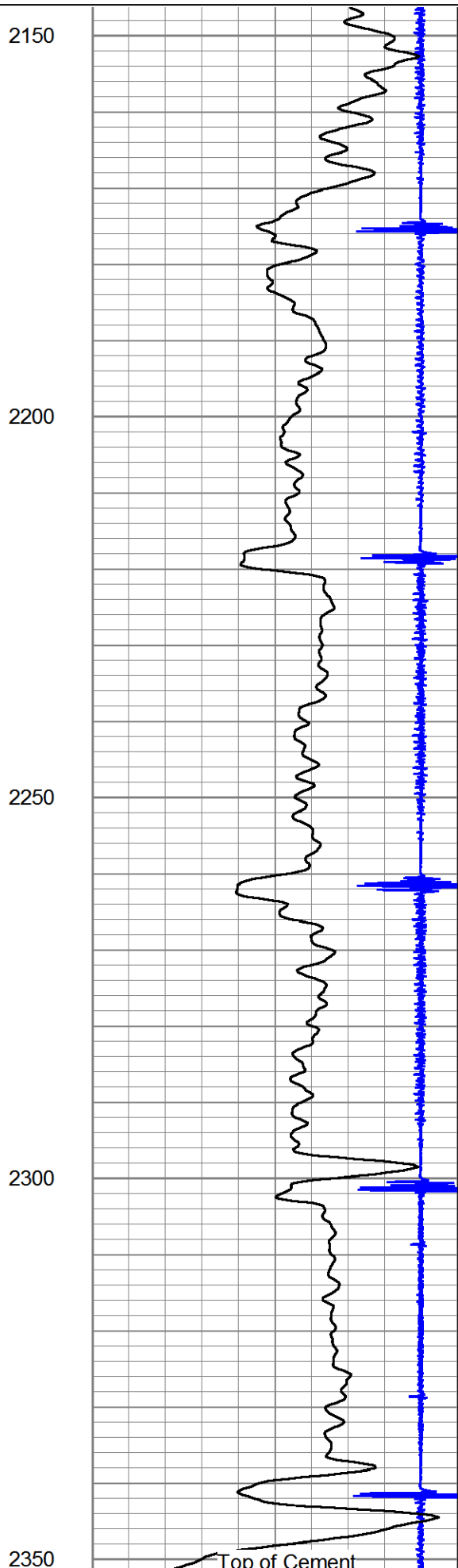
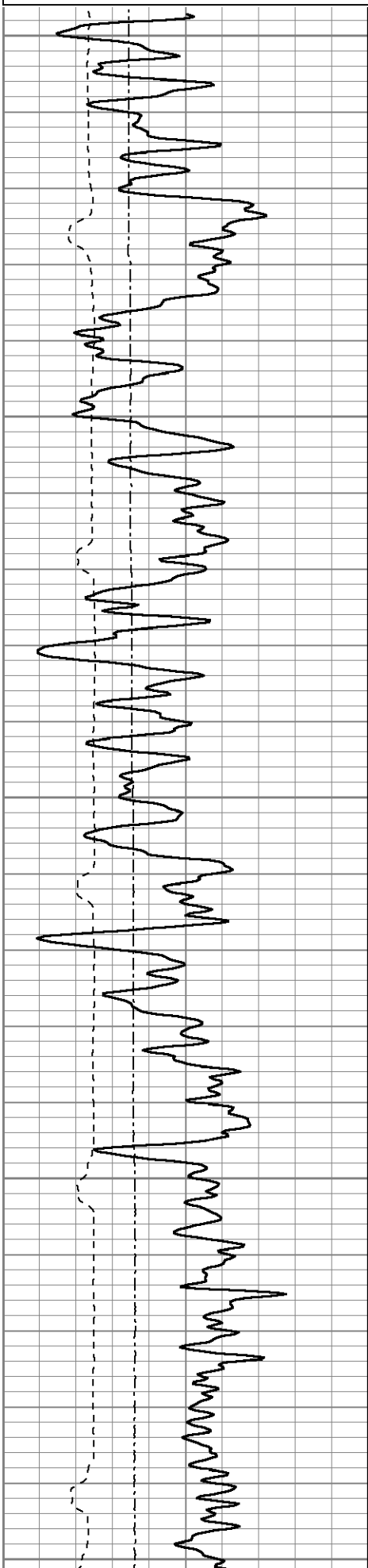
MAIN PASS

Database File: krehbeil1.db
 Dataset Pathname: pass3
 Presentation Format: cbl02
 Dataset Creation: Thu Jul 18 11:48:21 2019 by Log 7.0 B1
 Charted by: Depth in Feet scaled 1:240

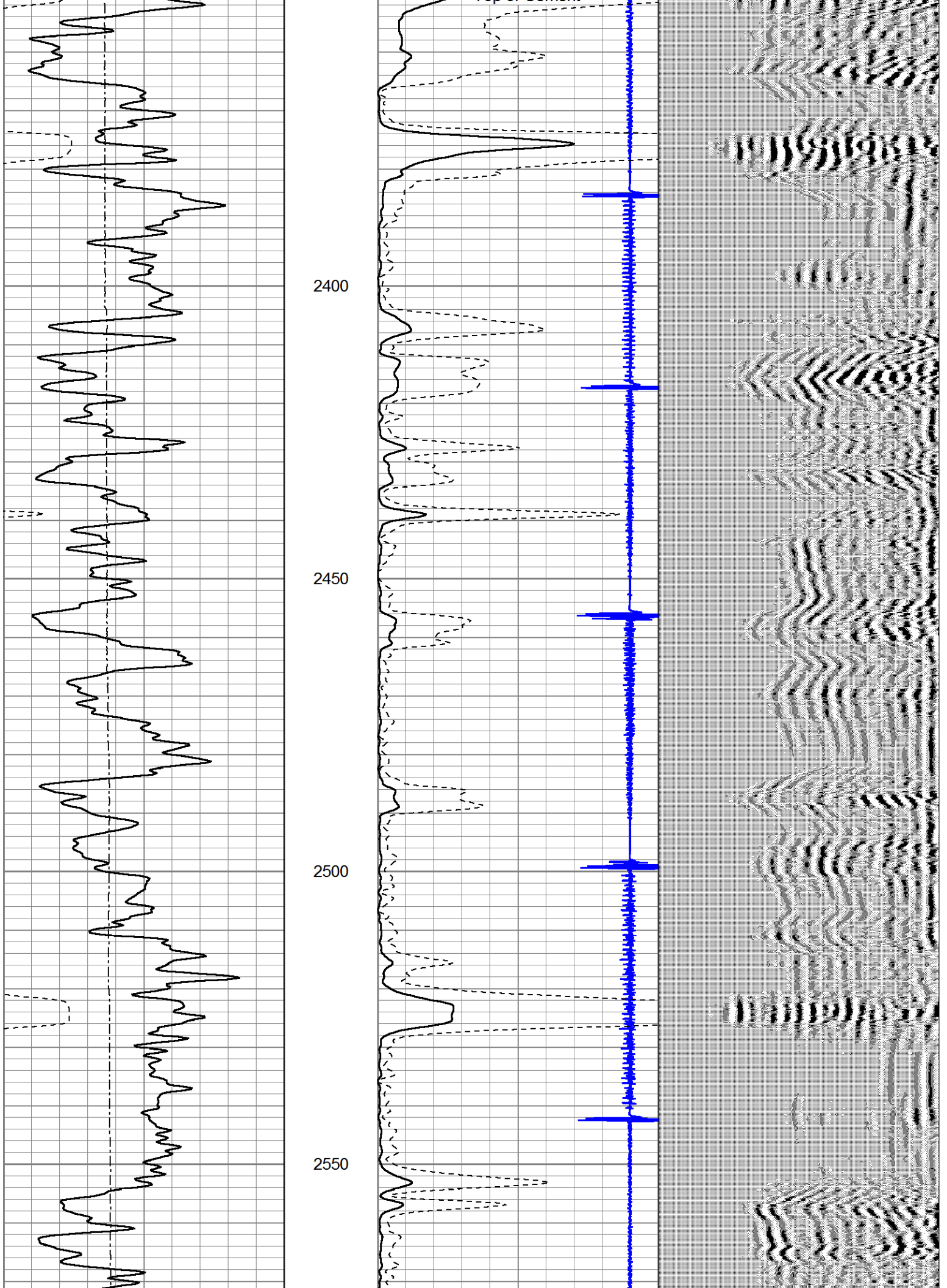
0	Gamma Ray (GAPI)	150	9	Collar Locator	-1	200	VARIABLE DENSITY	1200
---	------------------	-----	---	----------------	----	-----	------------------	------

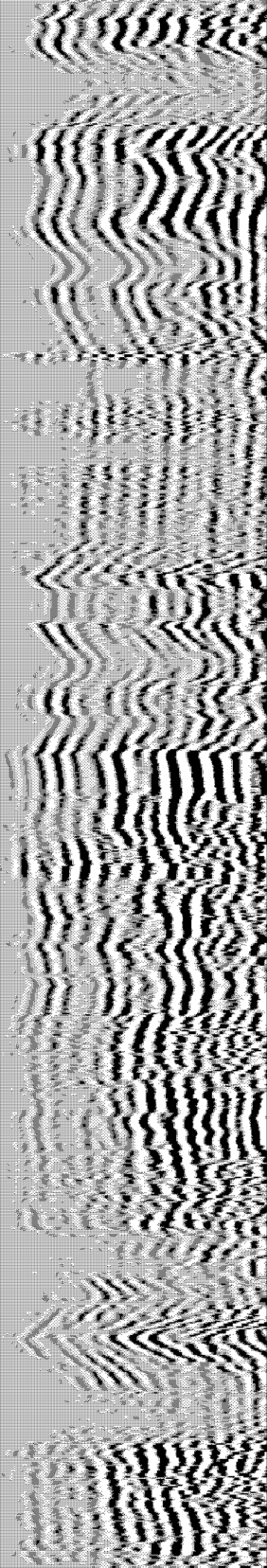
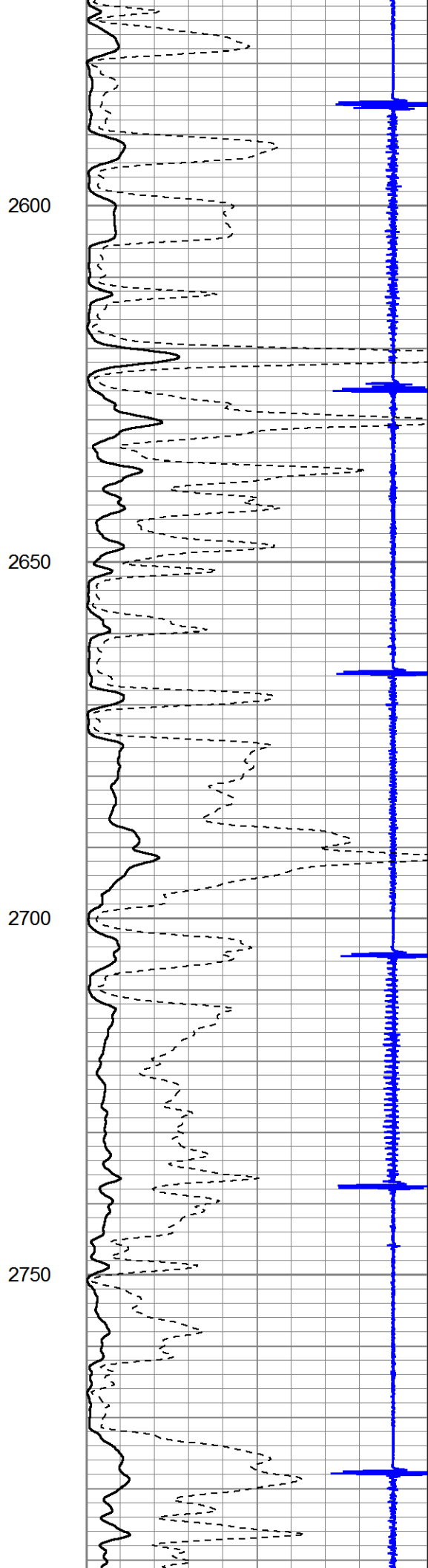
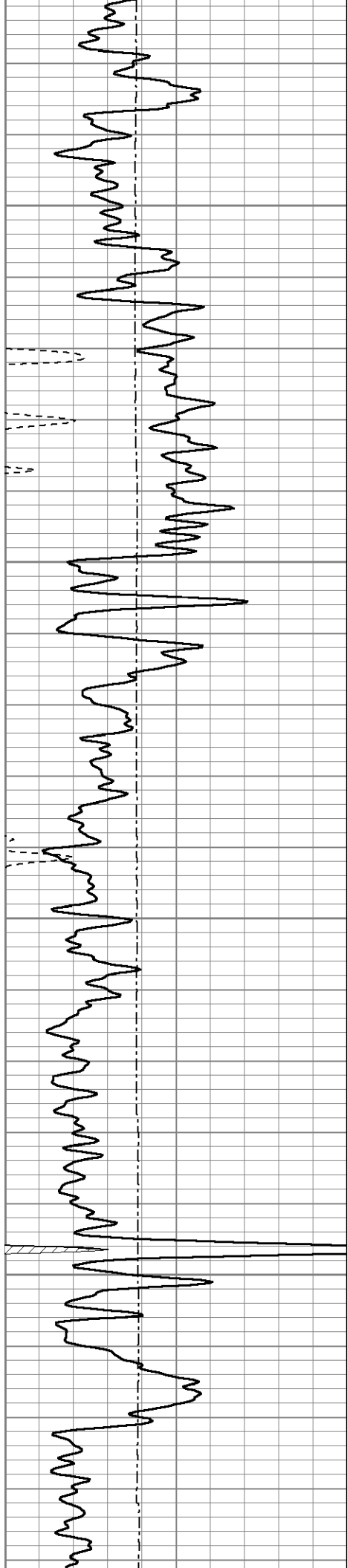
320	TT3 (usec)	120
0	LTEN (lb)	2000

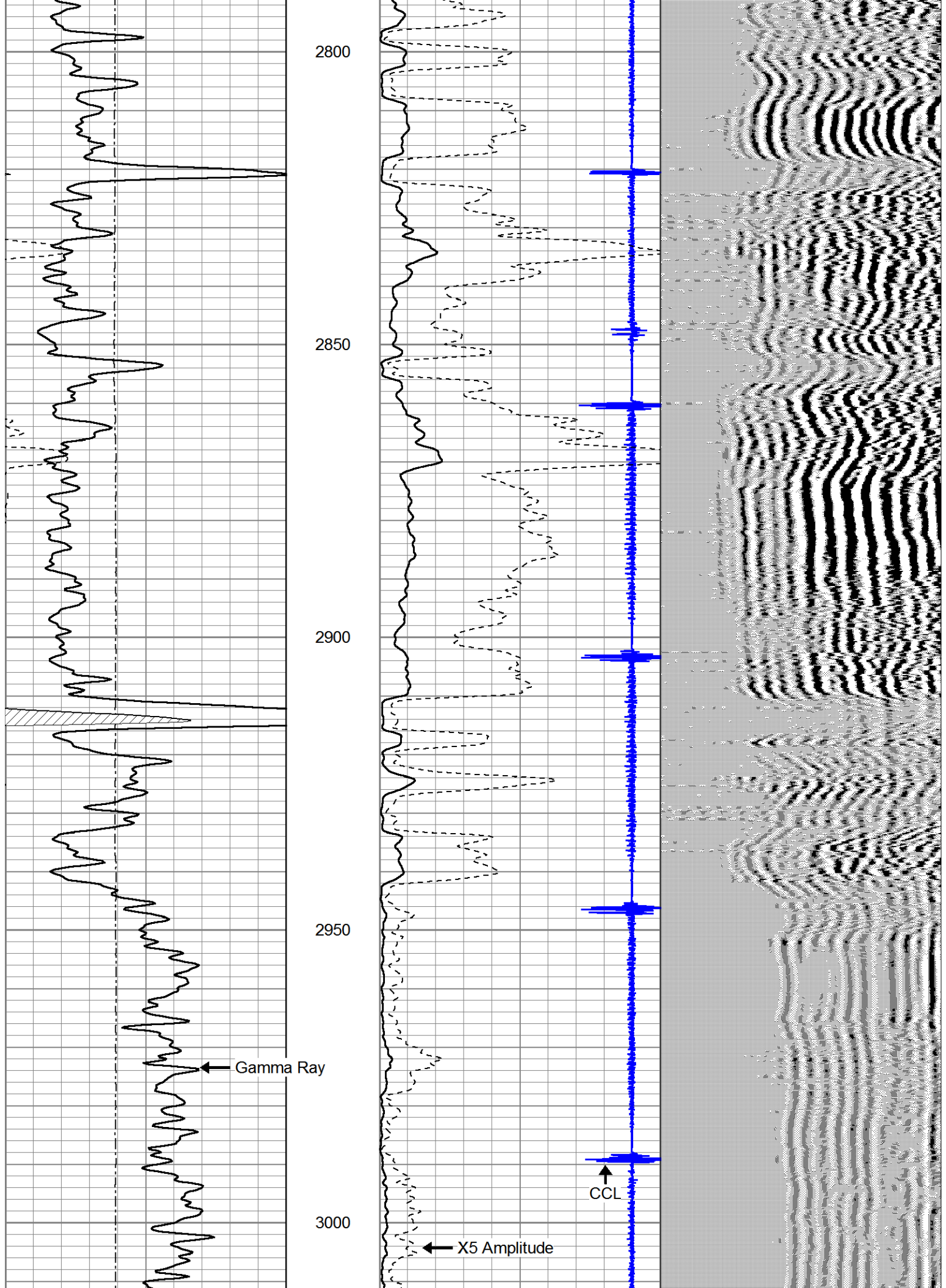
0	Amplitude (mV)	100
0	X5 Amplitude (mV)	20

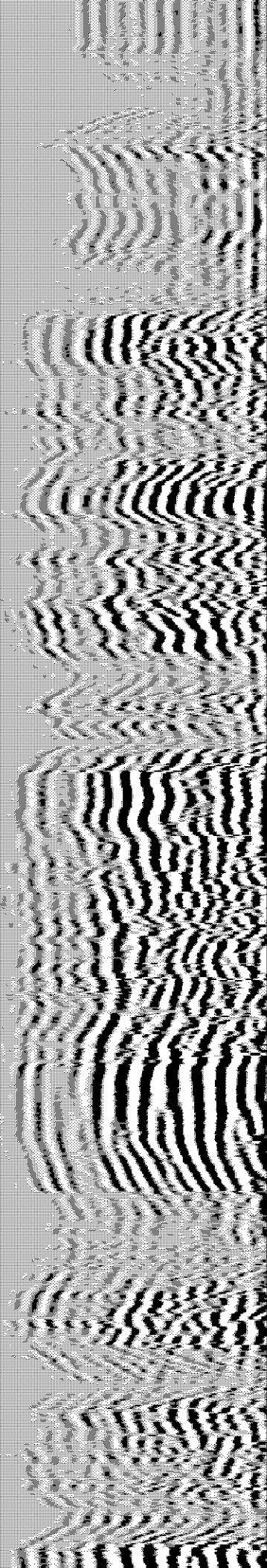
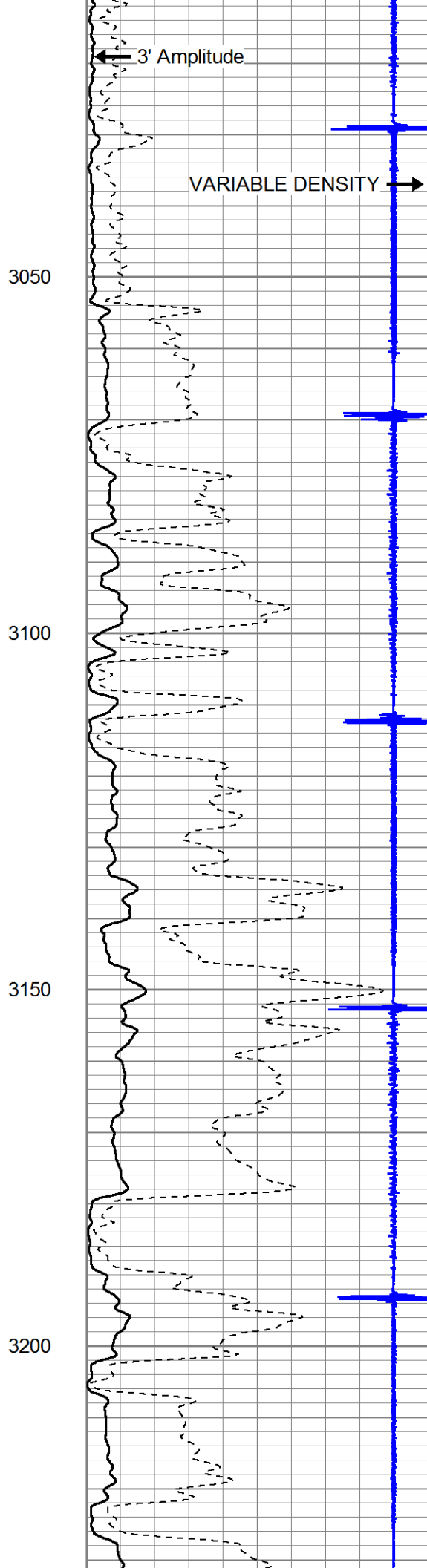
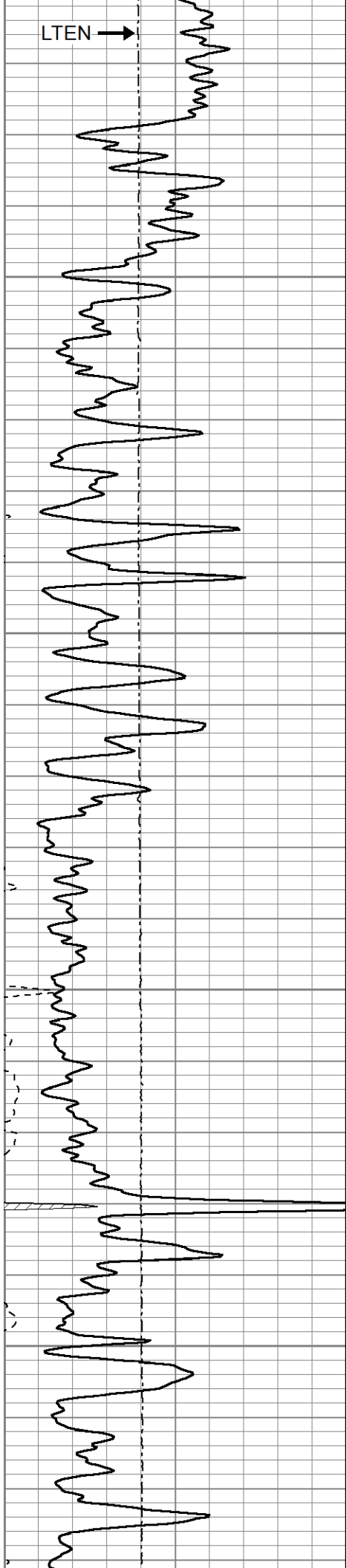


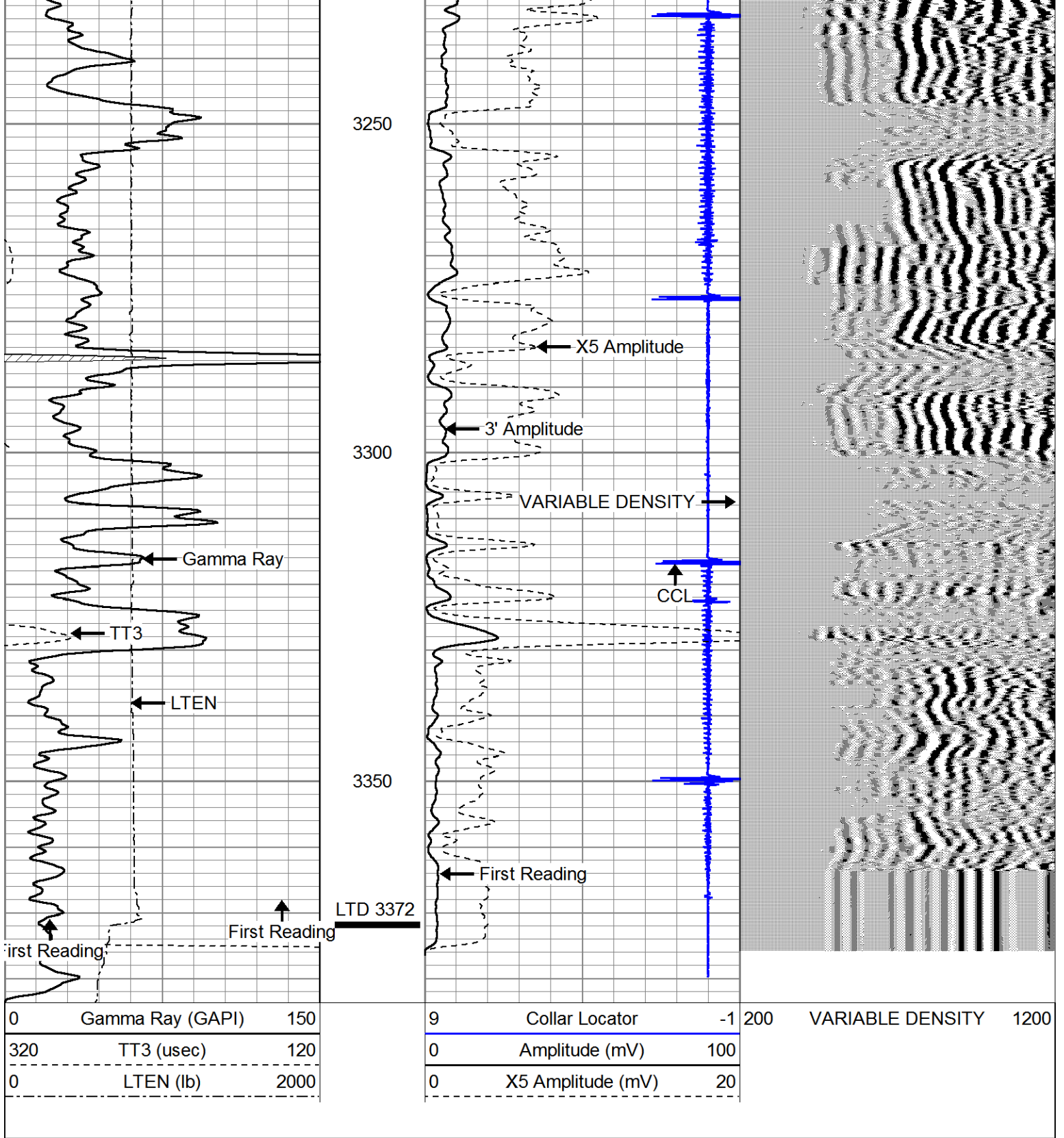
Top of Cement











PRESEEL OIL
 Field Service
 P.O. BOX 438
 Haysville, KS 67060

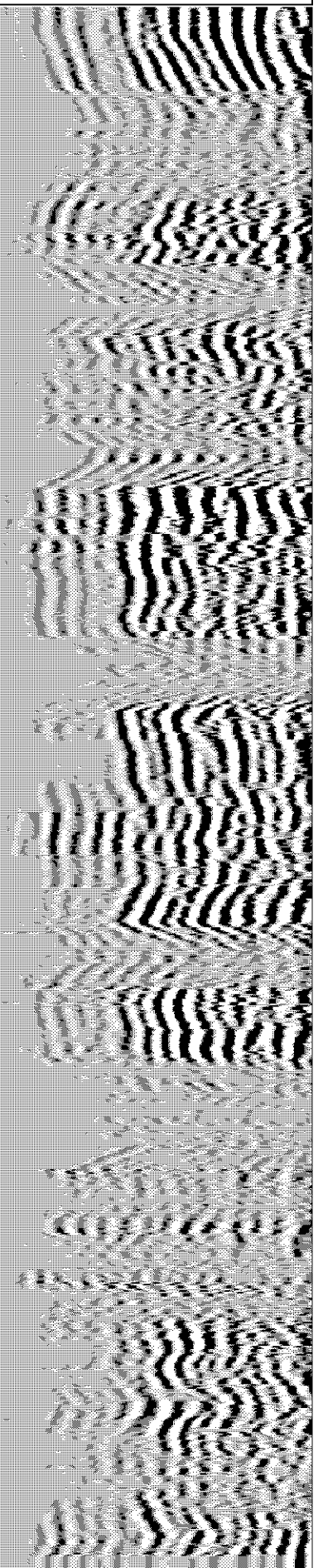
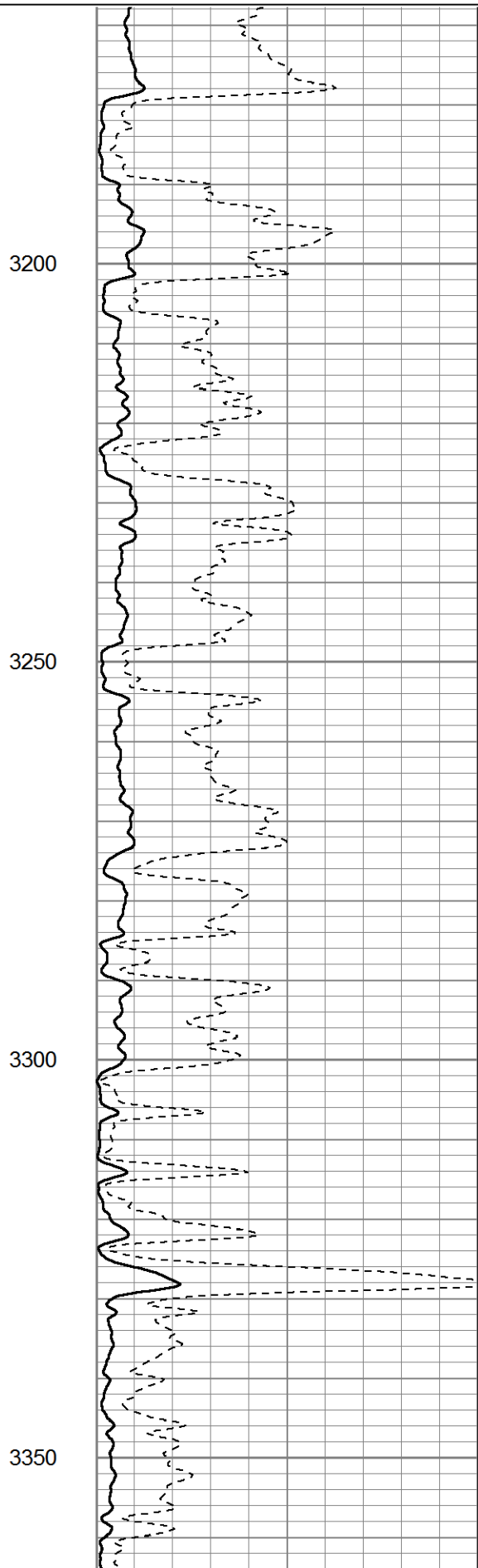
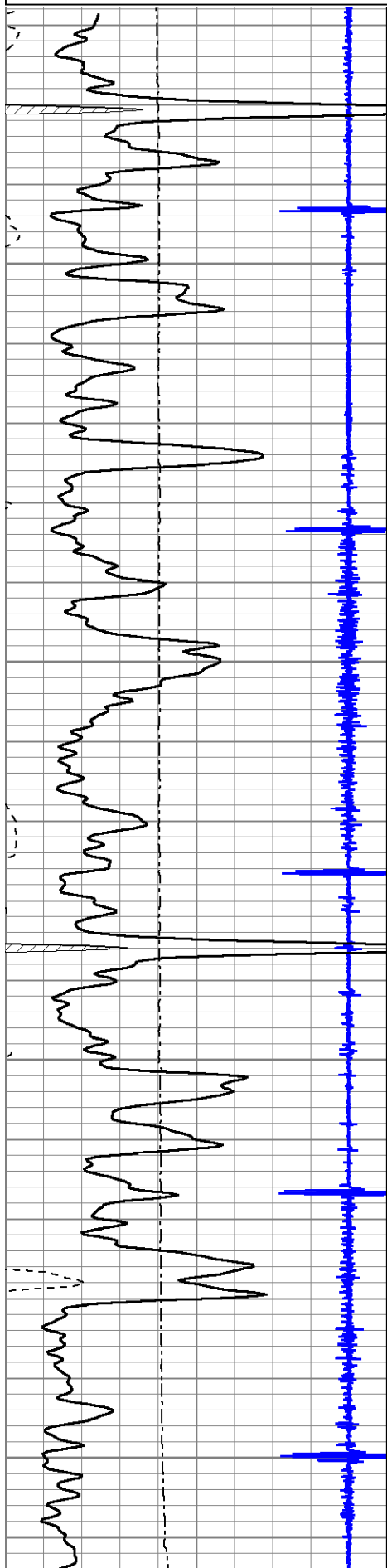
REPEAT SECTION

Database File: krehbeil1.db
 Dataset Pathname: pass2
 Presentation Format: cbl02
 Dataset Creation: Thu Jul 18 11:39:41 2019 by Log 7.0 B1
 Charted by: Depth in Feet scaled 1:240

9	Collar Locator	-1
0	Gamma Ray (GAPI)	150
320	TT3 (usec)	120
0	LTEN (lb)	2000

0	Amplitude (mV)	100	200
0	X5 Amplitude (mV)	20	

VARIABLE DENSITY 1200

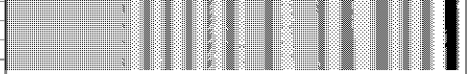
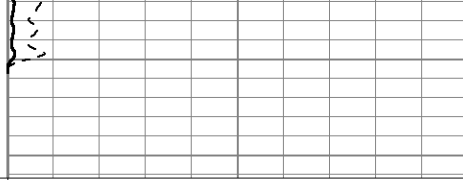
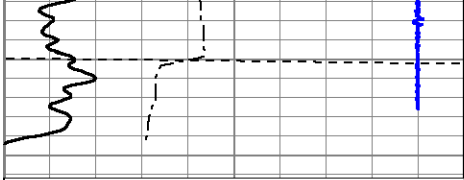


3200

3250

3300

3350



9	Collar Locator	-1
0	Gamma Ray (GAPI)	150
320	TT3 (usec)	120
0	LTEN (lb)	2000

0	Amplitude (mV)	100
0	X5 Amplitude (mV)	20

200 VARIABLE DENSITY 1200