



DUAL COMP POROSITY LOG

Pioneer Energy Services

Company **K-BAR OIL**
 Well **KREBIEL #1**
 Field **RICK**
 County **BARTON** State **KANSAS**

Company **K-BAR OIL**
 Well **KREBIEL #1**
 Field **RICK**
 County **BARTON**
 State **KANSAS**

Location: **API #: 15-009-26260-00-00**
1080' FNL & 825' FWL
SEC 13 TWP 19S RGE 11W
 Permanent Datum **GROUND LEVEL Elevation 1777'**
 Log Measured From **KELLY BUSHING**
 Drilling Measured From **KELLY BUSHING**
 Other Services **DIL/MEL**
 Elevation **K.B. 1782'**
D.F. N/A
G.L. 1777'

Date	6/13/2019						
Run Number	ONE						
Type Log	CNL/CDL						
Depth Driller	3443'						
Depth Logger	3442'						
Bottom Logged Interval	3413'						
Top Logged Interval	2600'						
Type Fluid In Hole	CHEMICAL						
Salinity, PPM CL	10,000						
Density	8.8						
Level	FULL						
Max. Rec. Temp. F	110						
Operating Rig Time	3 HOURS						
Equipment -- Location	P-24 HAYS						
Recorded By	IAN MABB						
Witnessed By	ROGER MOSES						
Borehole Record							
Run No.	Bit	From	To	Size	Wgt.	From	To
ONE	12.25"	0'	341'	8.625"	23#	0'	341'
TWO	7.875"	326'	TD				
Casing Record							

<<< Fold Here >>>

All interpretations are opinions based on inferences from electrical or other measurements and Pioneer Wireline Services, LLC cannot and does not guarantee the accuracy or correctness of any interpretation, and Pioneer Wireline Services, LLC will not be liable or responsible for any loss, costs, damages, or expenses incurred or sustained by anyone resulting from any interpretation made by any of our officers, agents or employees.

Comments

N/A DENOTES NOT AVAILABLE OR NON-APPLICABLE.

CLAFLIN, KS.
 1.5 MILES EAST TO NE 150 AVE,
 SOUTH 8.25 MILES, EAST INTO

Log Measured From: **KELLY BUSHING** 5 Ft. Above Permanent Datum

THANK YOU FOR USING PIONEER ENERGY SERVICES
www.pioneerenergy.com 785-625-3858

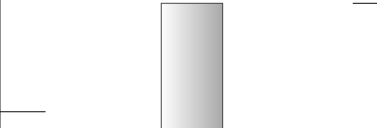
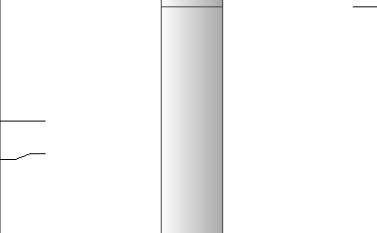
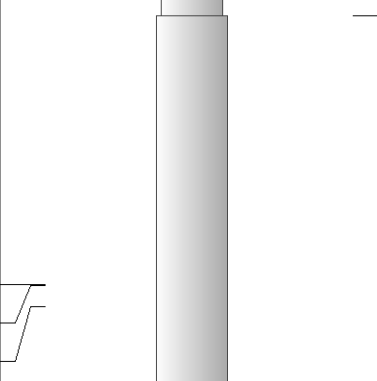
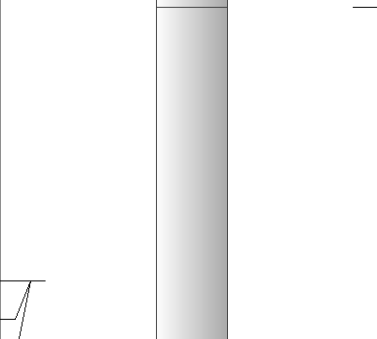
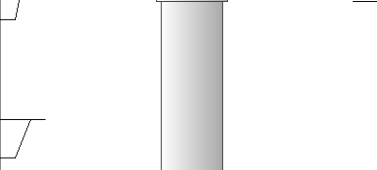
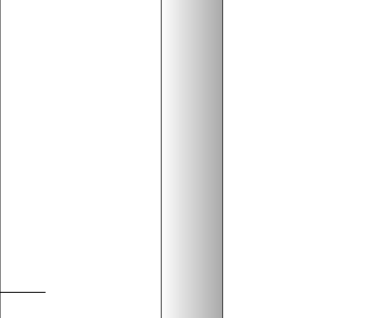
<p>Your Pioneer Energy Services Crew</p> <p>Engineer: IAN MABB Operator: Operator: Operator:</p>	<p>This Log Record Was Witnessed By</p> <p>Primary Witness: ROGER MOSES Secondary Witness: Secondary Witness: Secondary Witness:</p>
---	---

Log Variables

DatabaseC:\ProgramData\Warrior\Data\k-bar_krebiel_1.db
 Dataset field/well/stackmel/pass3.1//_vars_

Top - Bottom

A	BOREID in	BOTTEMP degF	CASEOD in	CASETHCK in	FLUIDDEN g/cc	M	MATRXDEN g/cc
1	7.875	110	5.5	0	1	2	2.71
NPORSEL	PERFS	SNDERR mmho/m	SNDERRM mmho/m	SPSHIFT mV	SRFTEMP degF	SZCOR	TDEPTH ft
Limestone	0	-26	-20	40	0	Off	3442

Sensor	Offset (ft)	Schematic	Description	Length (ft)	O.D. (in)	Weight (lb)
GR	40.58		GR-M&W (233-M&W)	3.00	3.50	50.00
CNLSC CNSSC	37.48 36.73		CNT-M&W (207-MW)	5.50	3.50	100.00
LSD DCAL SSD	28.43 28.42 27.93		CDL-M&W (96-916)	8.50	4.00	250.00
MCAL MI MN	19.83 19.83 19.83		ML-PSIML (PSI-01) GO Micro log tools converted to Simplec electronics	7.58	4.00	65.00
RLL3F RLL3	15.80 15.80					
CILD	8.00		DIL-PSI HIGH TEMP (1039)	18.50	3.50	220.00

CILM 4.70

SP 0.20

Dataset: k-bar_krebiel_1.db: field/well/stackmel/pass3.1/
 Total length: 43.08 ft
 Total weight: 685.00 lb
 O.D.: 4.00 in

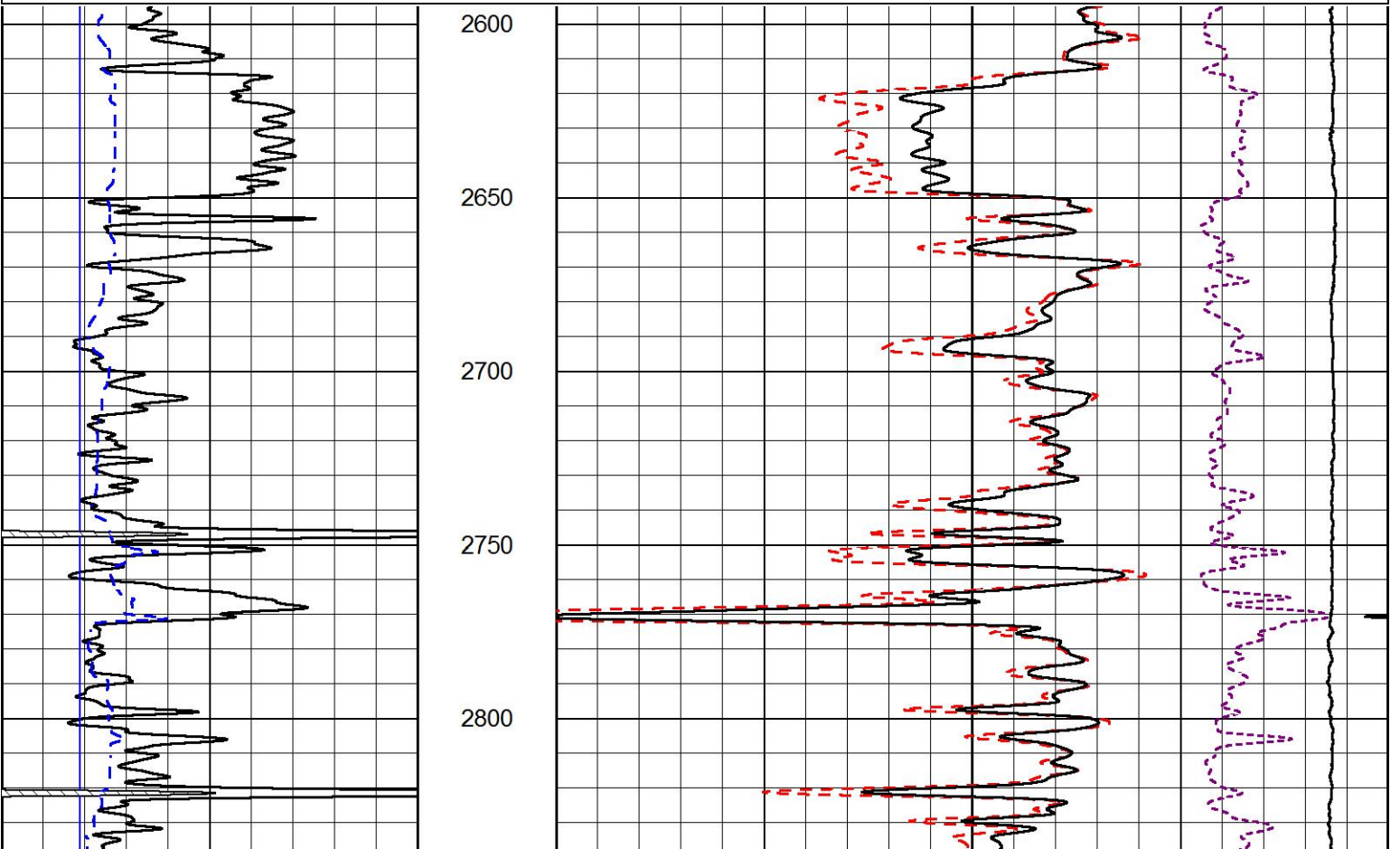


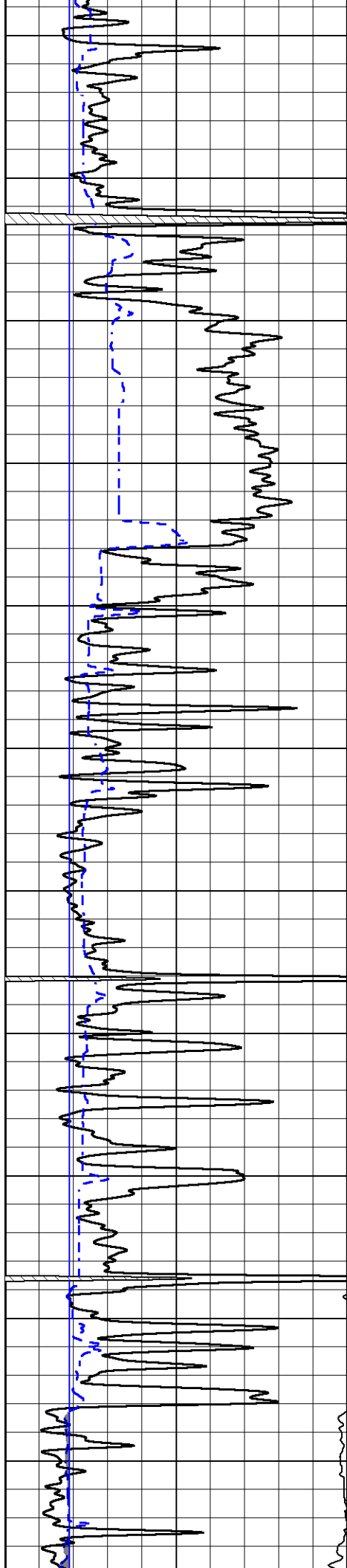
MAIN PASS

Database File k-bar_krebiel_1.db
 Dataset Pathname stackmel/pass3.1
 Presentation Format _cdl
 Dataset Creation Thu Jun 13 18:25:03 2019
 Charted by Depth in Feet scaled 1:600

0	GAMMA RAY (GAPI)	150
6	DCAL (in)	16

COMPENSATED DENSITY (2.71 MA)	
30 (pu)	-10
2 BULK DENSITY (g/cc)	3
15000 LINE TENSION (lb)	0
-0.25 CORRECTION (g/cc)	0.25





2850

2900

2950

3000

3050

3100

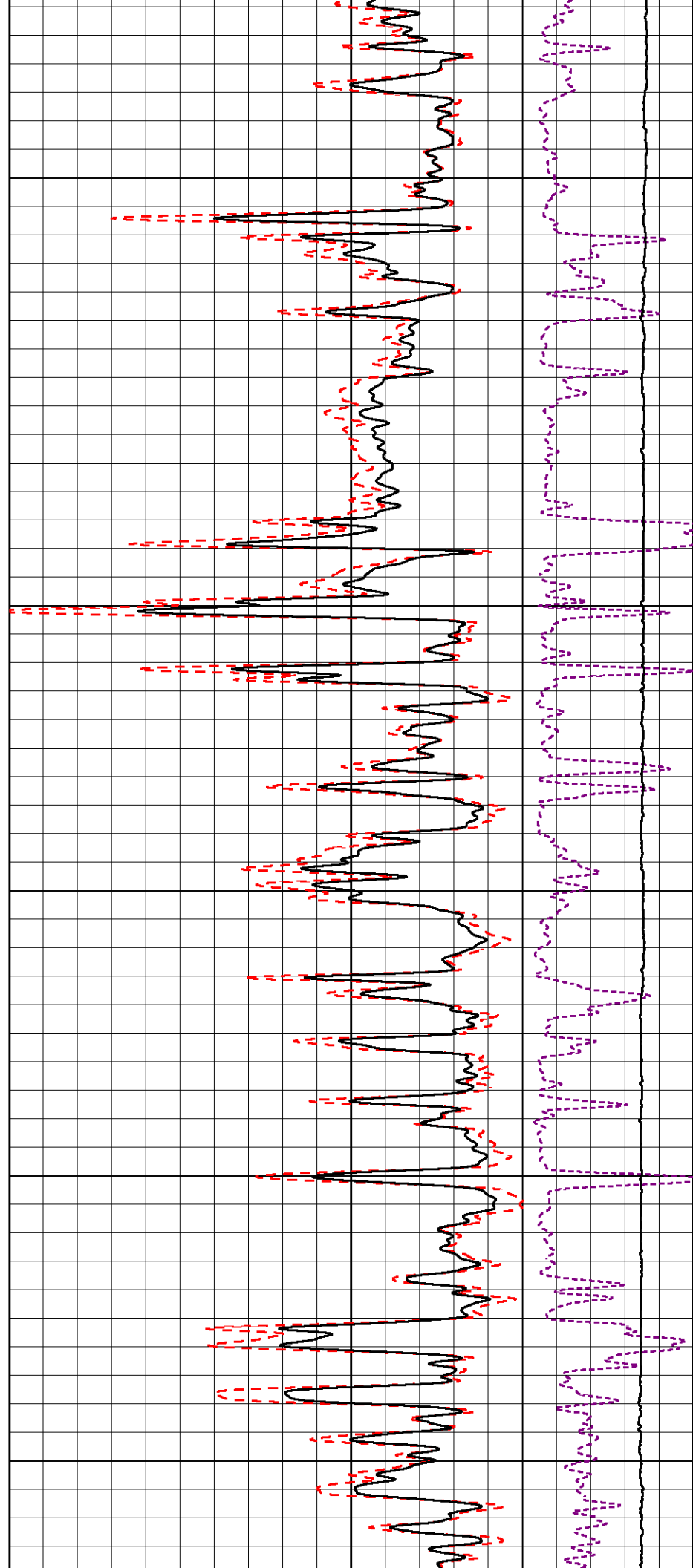
3150

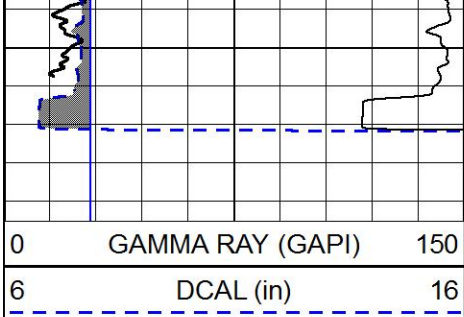
3200

3250

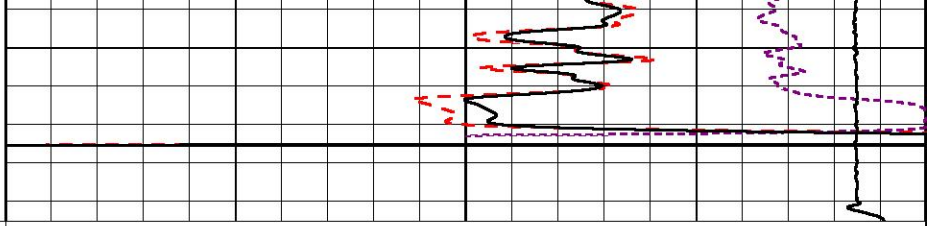
3300

3350





3400



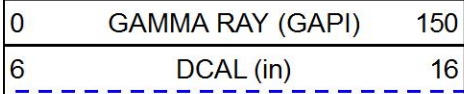
COMPENSATED DENSITY
(2.71 MA)

30	(pu)	-10
2	BULK DENSITY (g/cc)	3
15000	LINE TENSION (lb)	0
-0.25	CORRECTION (g/cc)	0.25

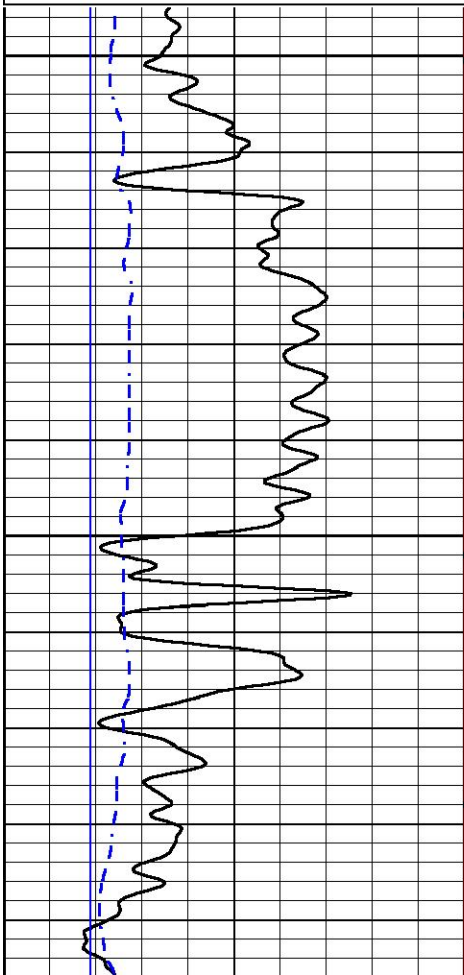


MAIN PASS

Database File k-bar_krebiel_1.db
 Dataset Pathname stackmel/pass3.1
 Presentation Format _CNDLS~1
 Dataset Creation Thu Jun 13 18:25:03 2019
 Charted by Depth in Feet scaled 1:240

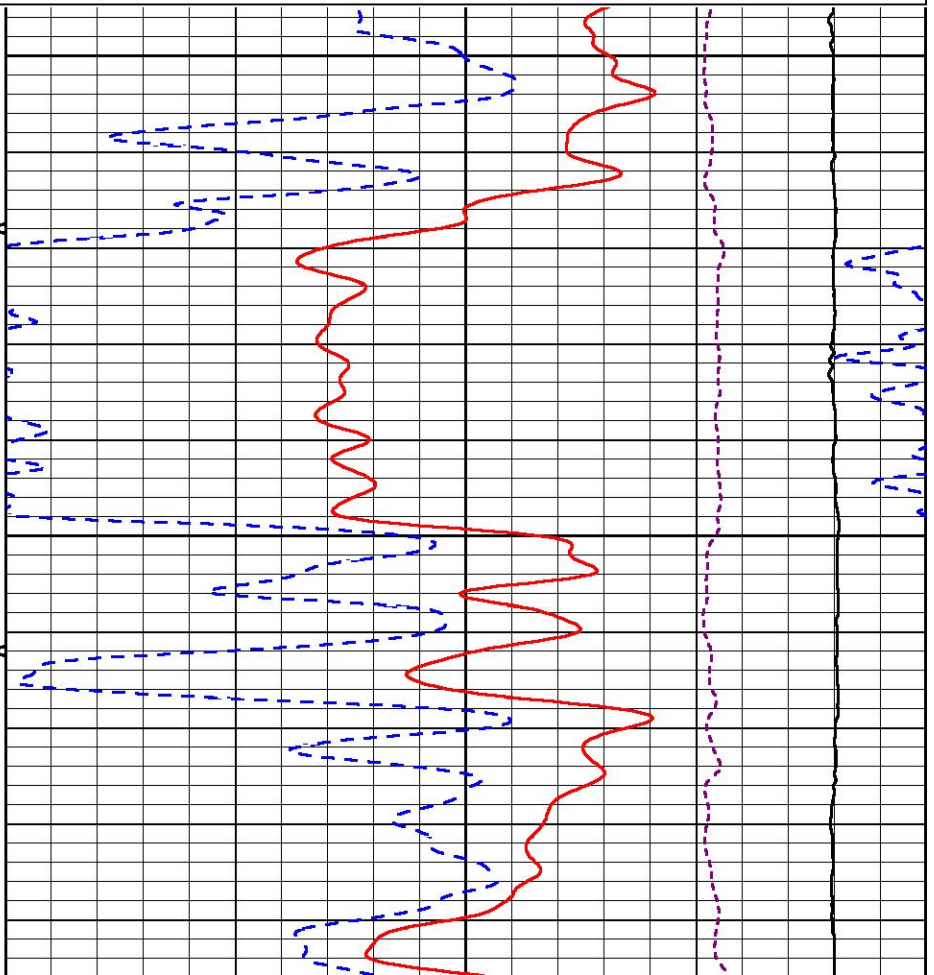


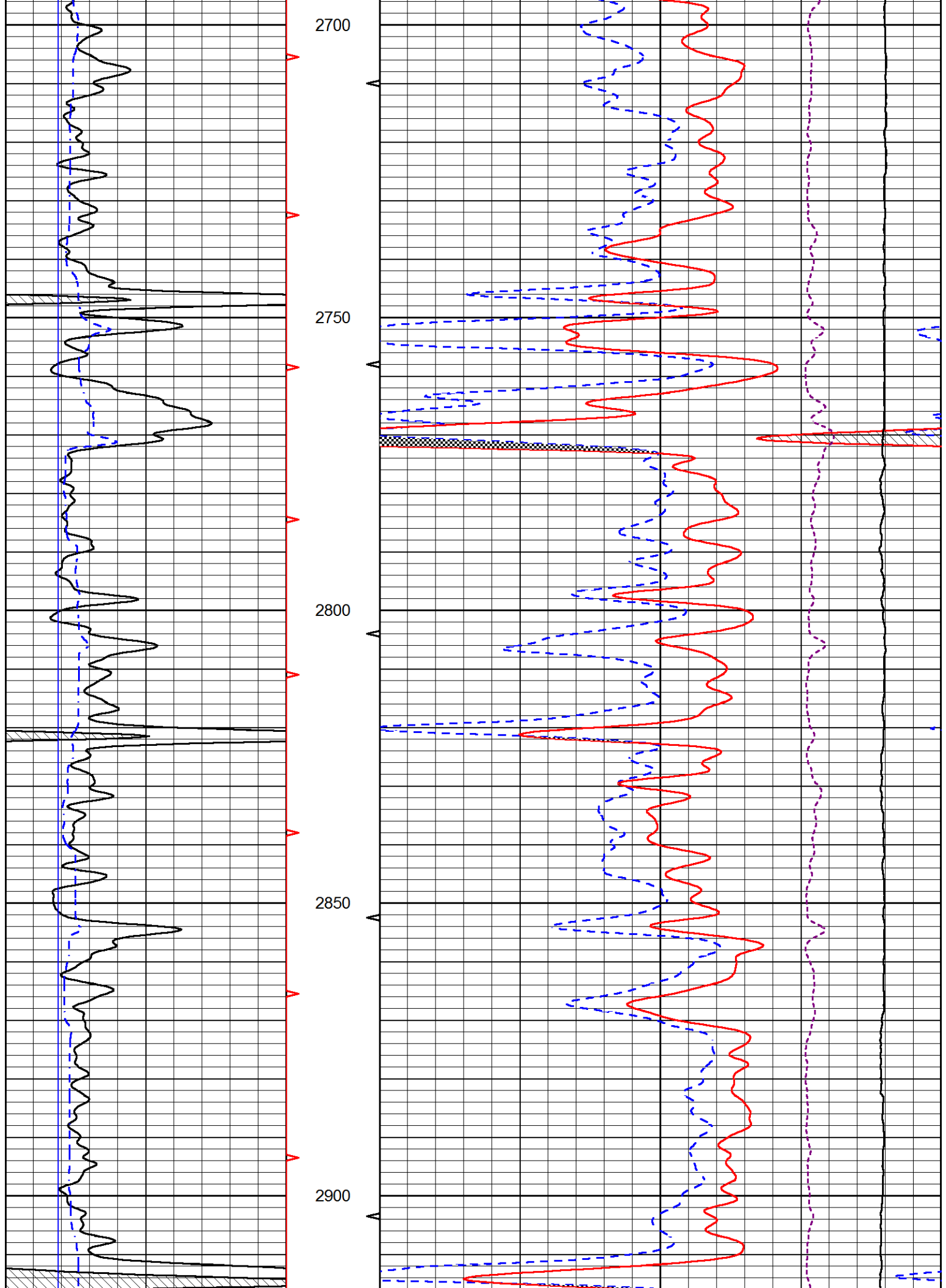
30	CNLS (pu)	-10
30	DPOR (pu)	-10
10000	LINE TENSION (lb)	0
-0.75	CORRECTION (g/cc)	0.75

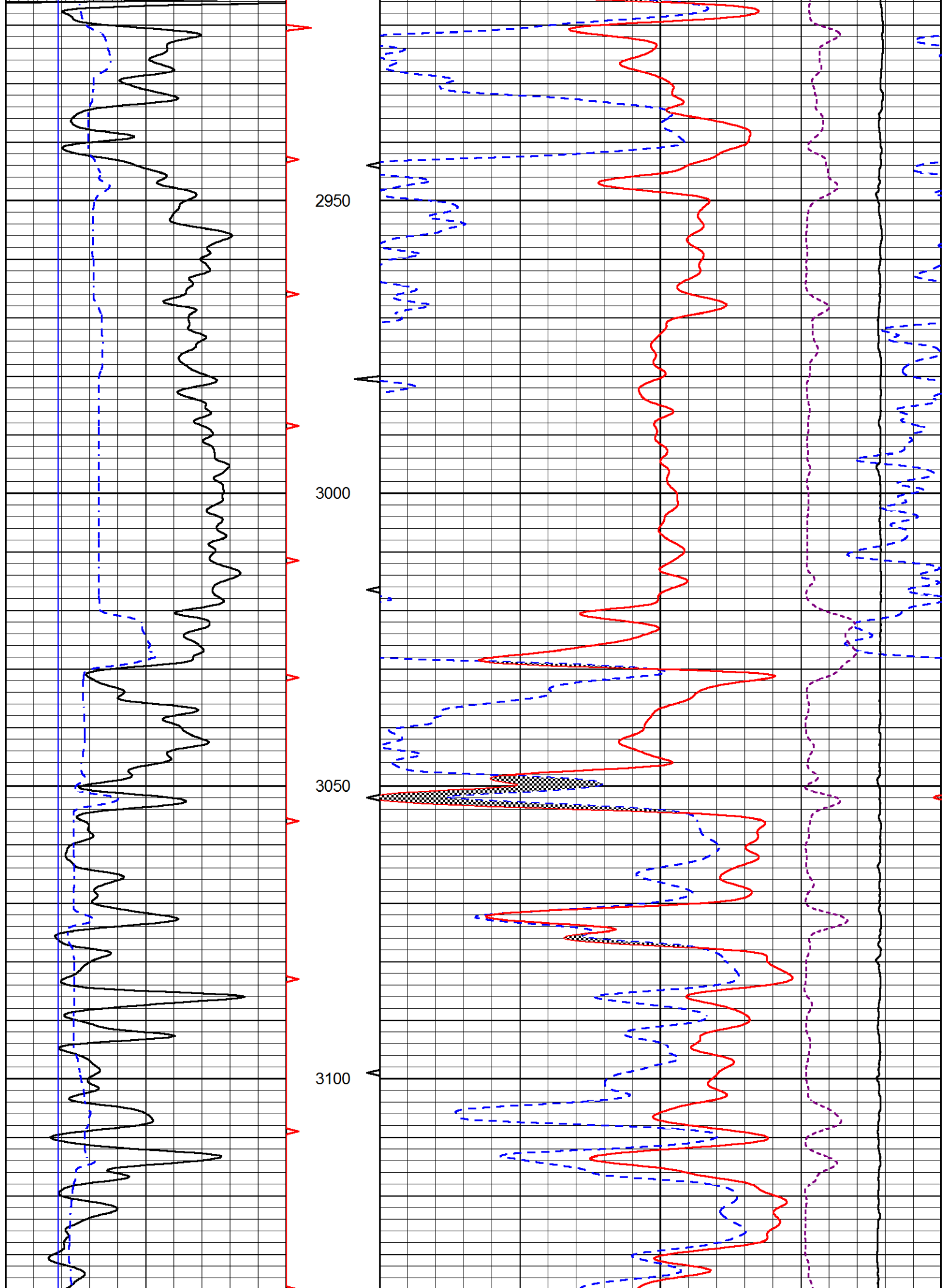


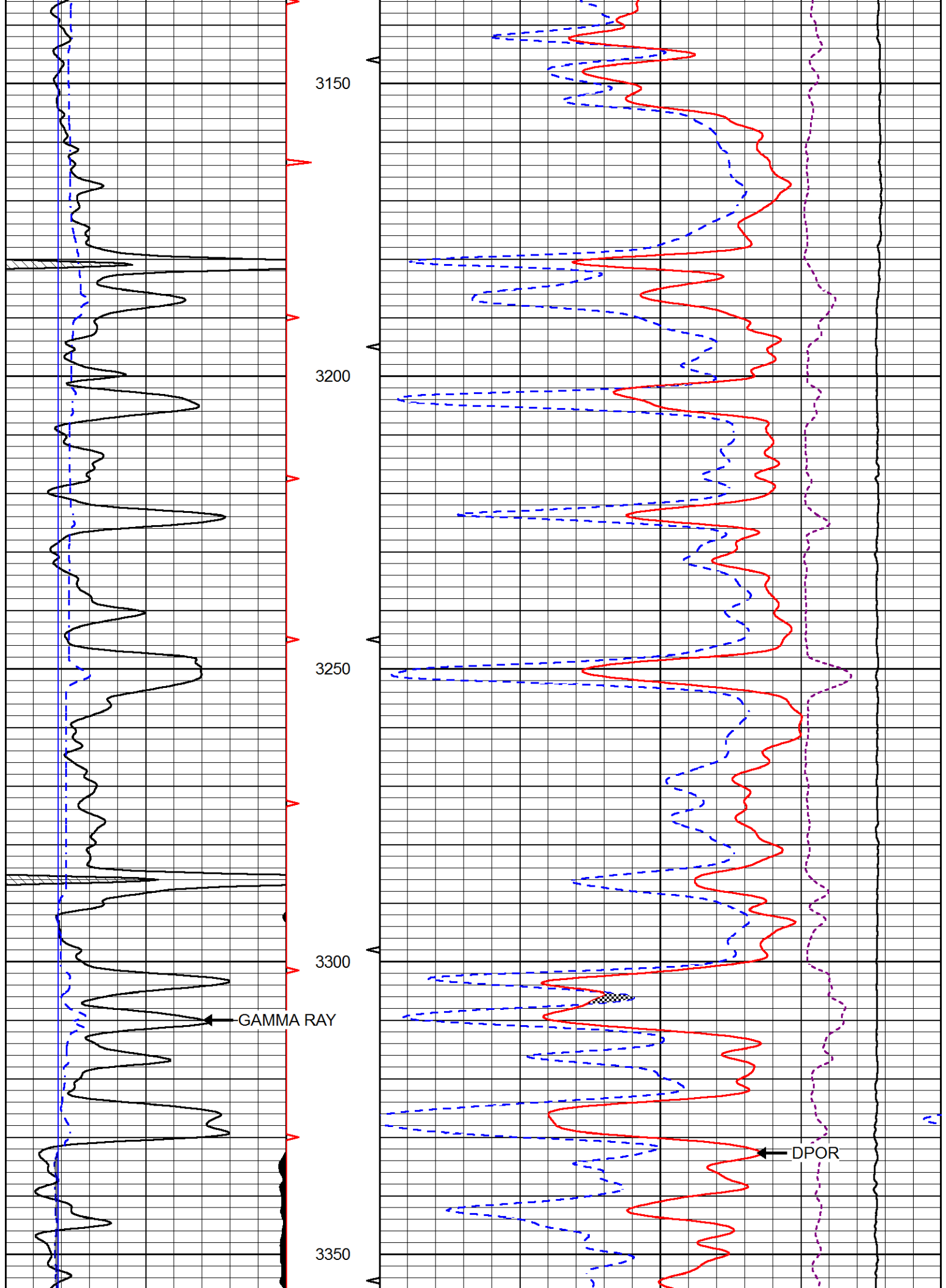
2600

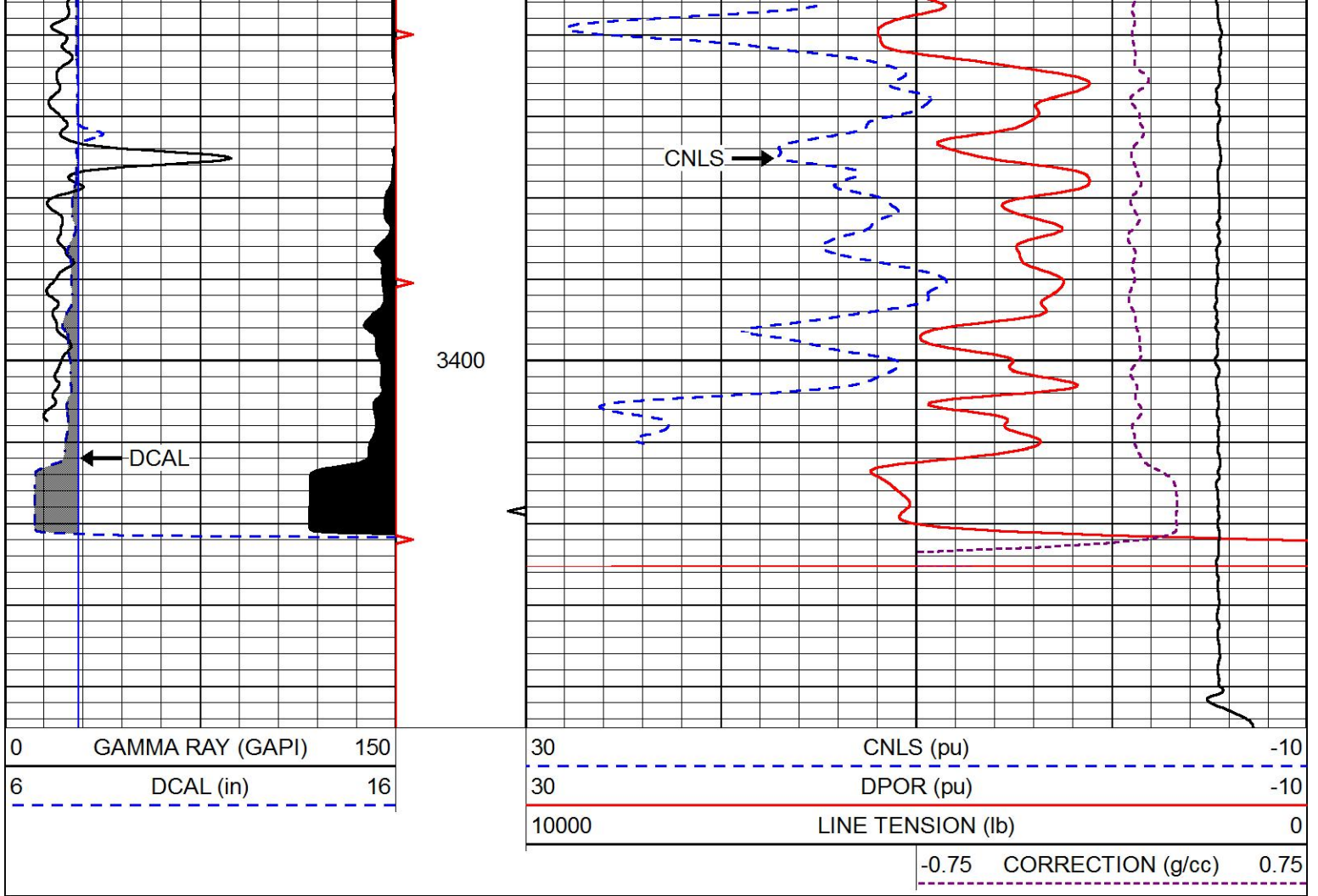
2650





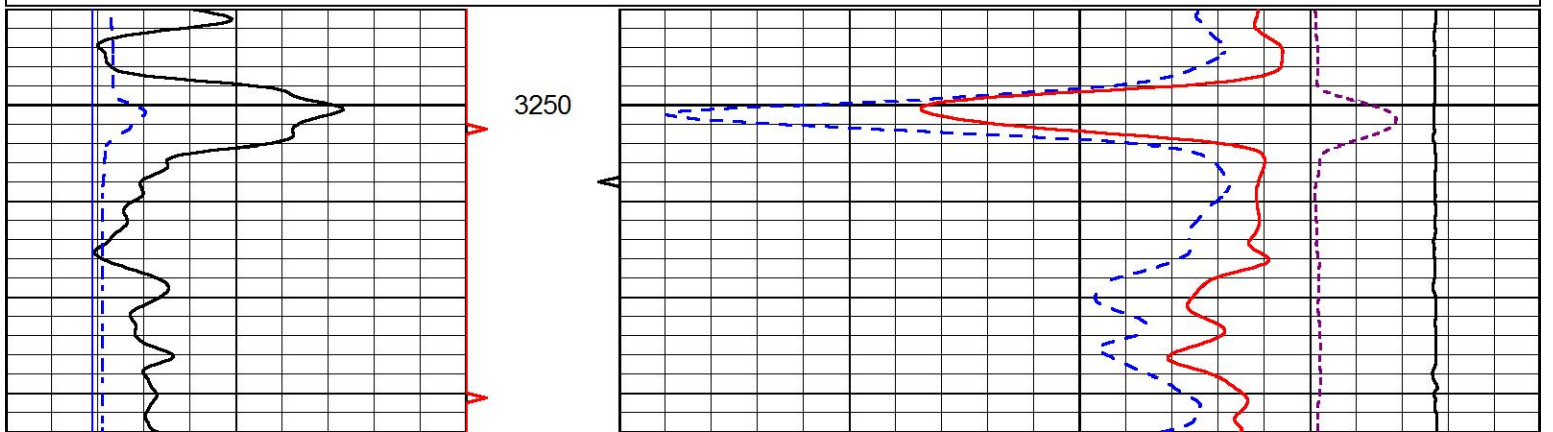
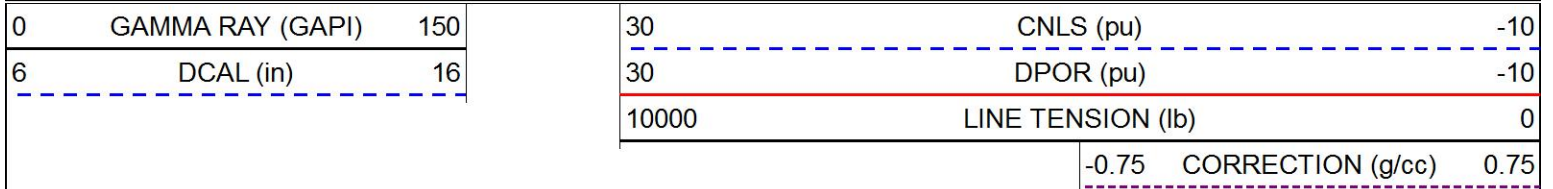


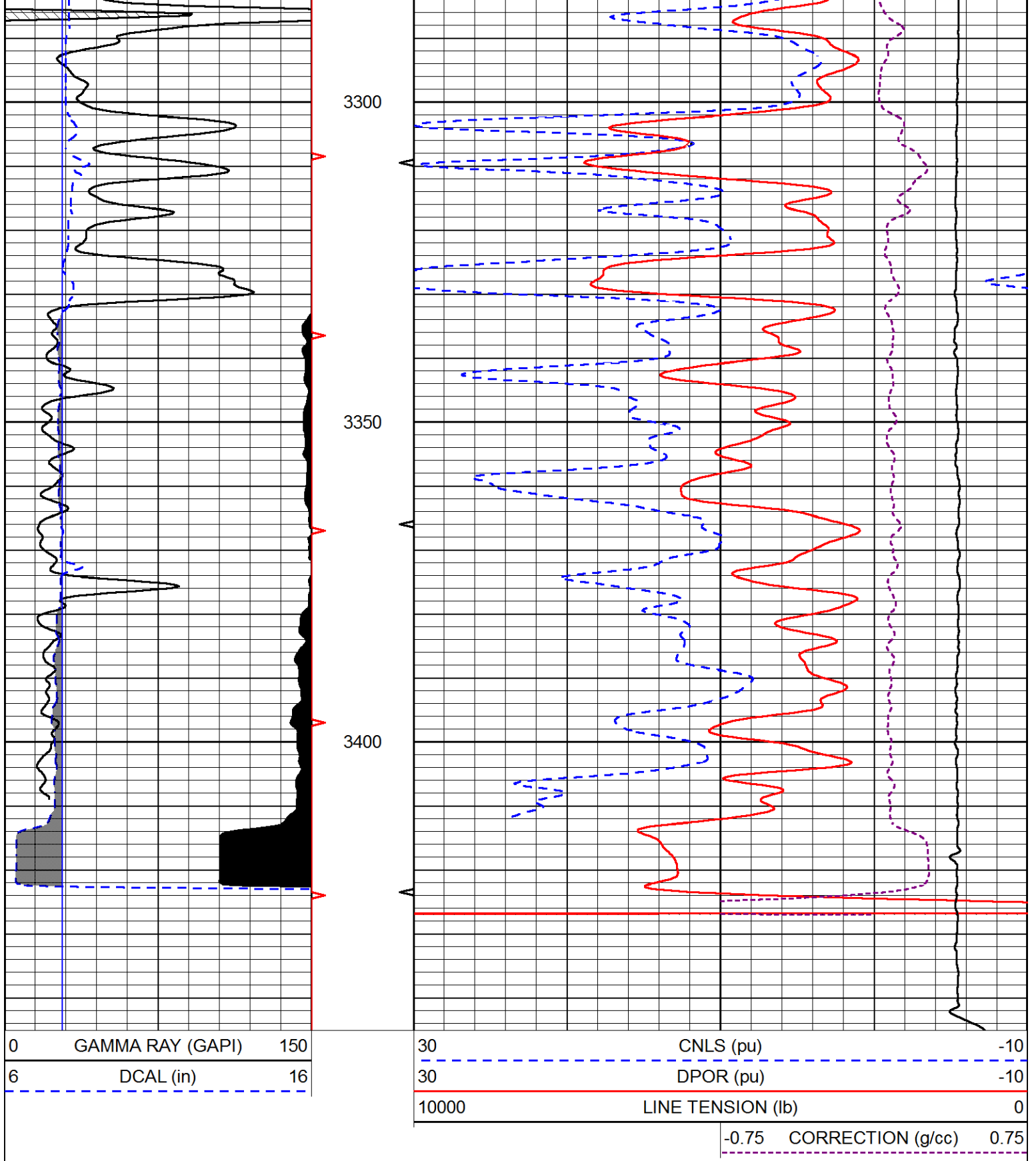




REPEAT SECTION

Database File k-bar_krebiel_1.db
 Dataset Pathname stackmel/pass2.1
 Presentation Format _cndlspec
 Dataset Creation Thu Jun 13 18:29:13 2019
 Charted by Depth in Feet scaled 1:240





Calibration Report

Database File k-bar_krebiel_1.db
 Dataset Pathname stackmel/pass3.1/
 Dataset Creation Thu Jun 13 18:25:03 2019

Dual Induction Calibration Report

Serial-Model: 1039-PSI HIGH TEMP
 Calibration Performed: Fri Apr 12 09:39:54 2019

Loop:	Readings		References			Results	
	Air	Loop	Air	Loop		Gain	Offset
Deep	167.000	835.000	0.000	255.800	mmho/m	0.460	-17.500
Medium	0.000	1348.000	142.000	255.800	mmho/m	0.400	-40.000

Microlog Calibration Report

Serial-Model: PSI-01-PSIML
 Performed: Sun Feb 24 09:53:40 2019

	Readings		References			Results	
	Zero	Cal	Zero	Cal		m	b
Normal	0.0000	1.0000	0.0000	1.0000	Ohm-m	76000.0000	-3.5000
Inverse	0.0000	1.0000	0.0000	1.0000	Ohm-m	63000.0000	-0.6000
Caliper	1.0001	1.1397	6.5000	18.5000	in	70.0000	-65.9000

Compensated Density Calibration Report

Serial-Model: 96-916-M&W
 Source / Verifier: 16955B / 2ci
 Master Calibration Performed: Wed Mar 27 11:00:53 2019

Master Calibration

	Density		Far Detector	Near Detector	
Magnesium	1.755	g/cc	8943.64	10054.60	cps
Aluminum	2.655	g/cc	1595.61	6242.82	cps
Spine Angle = 74.54			Density/Spine Ratio = 0.503		
	Size		Reading		
Small Ring	6.00	in	1.75		
Large Ring	16.00	in	1.46		

Compensated Neutron Calibration Report

Serial Number: 207-MW
 Tool Model: M&W
 Calibration Performed: WED FEB 13 10:30:30 2019

Detector	Readings	Target	Normalization
Short Space	6240.00 cps	1000.00 cps	1.6025
Long Space	460.00 cps	1000.00 cps	1.9500

Gamma Ray Calibration Report

Serial Number: 233-M&W
 Tool Model: M&W
 Calibration Performed: Fri Feb 07 01:42:40 2014

Calibrator Value: 1.0 GAPI

Background Reading: 0.0 cps
 Calibrator Reading: 1.0 cps

Sensitivity:

0.5500

GAPI/cps



PIONEER

Pioneer Energy Services

Company	K-BAR OIL
Well	KREBIEL #1
Field	RICK
County	BARTON
State	KANSAS