



MICRO LOG

Company MAI OIL OPERATIONS, INC.
Well MORGENSTERN FAMILY CORP. #1
Field AKERS
County BARTON
State KANSAS

Company MAI OIL OPERATIONS, INC.
Well MORGENSTERN FAMILY CORP. #1
Field AKERS
County BARTON
State KANSAS

Location: API # : 15-009-26182-0000
2184' FNL & 802' FVNL
NW - SE - SW - NW
SEC 35 TWP 17S RGE 13W
Permanent Datum GROUND LEVEL Elevation 1878
Log Measured From KELLY BUSHING 8' A.G.L.
Drilling Measured From KELLY BUSHING
Other Services CDL/CNL DIL
Elevation K.B. 1886 D.F. 1884 G.L. 1878

Date	8/30/17		
Run Number	TWO		
Depth Driller	3455		
Depth Logger	3456		
Bottom Logged Interval	3454		
Top Log Interval	2800		
Casing Driller	8 5/8"@454		
Casing Logger	454		
Bit Size	7 7/8"		
Type Fluid in Hole	CHEMICAL MUD	CHLORIDES 8,000 PPM	
Density / Viscosity	9.2/52		
pH / Fluid Loss	9.0/9.8		
Source of Sample	FLOWLINE		
Rim @ Meas. Temp	.900@85F		
Rmf @ Meas. Temp	.675@85F		
Rmc @ Meas. Temp	1.08@85F		
Source of Rmf / Rmc	MEASUREMENT		
Rim @ BHT	.689@111F		
Time Circulation Stopped	3.5 HOURS		
Time Logger on Bottom	3:45 A.M.		
Maximum Recorded Temperature	111F		
Equipment Number	922339		
Location	HAYS, KANSAS		
Recorded By	JEFF LUEBBERS		
Witnessed By	JIM MUSGROVE		

<<< Fold Here >>>

All interpretations are opinions based on inferences from electrical or other measurements and we cannot and do not guarantee the accuracy or correctness of any interpretation, and we shall not, except in the case of gross or willful negligence on our part, be liable or responsible for any loss, costs, damages, or expenses incurred or sustained by anyone resulting from any interpretation made by any of our officers, agents or employees. These interpretations are also subject to our general terms and conditions set out in our current Price Schedule.

Comments

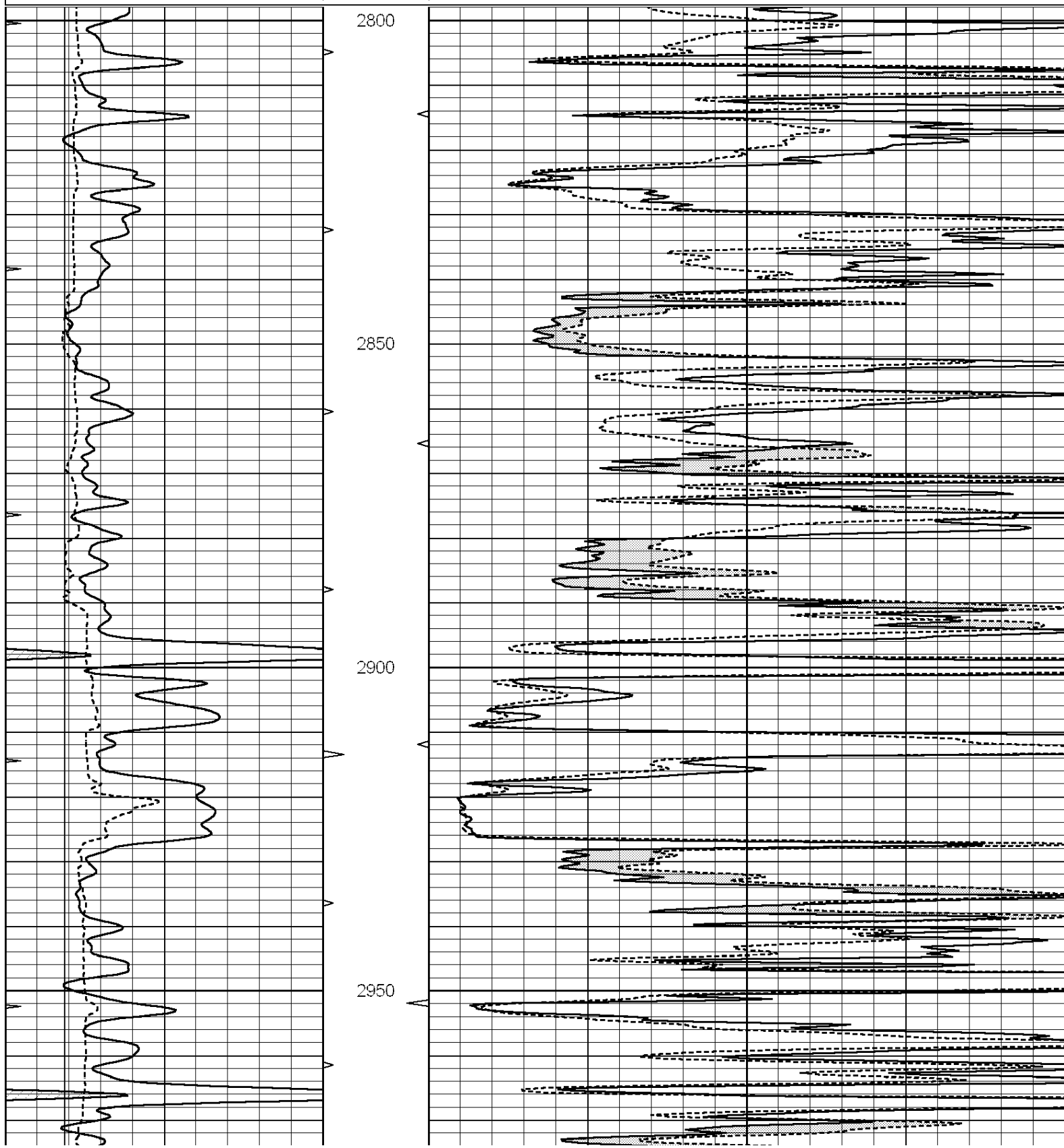
THANK YOU FOR USING ELI WIRELINE HAYS, KANSAS (785) 628-6395
DIRECTIONS
HOISINGTON, KS., 2E. ON HWY 4 TO "NE 20TH RD.", 1/2N., E. INTO

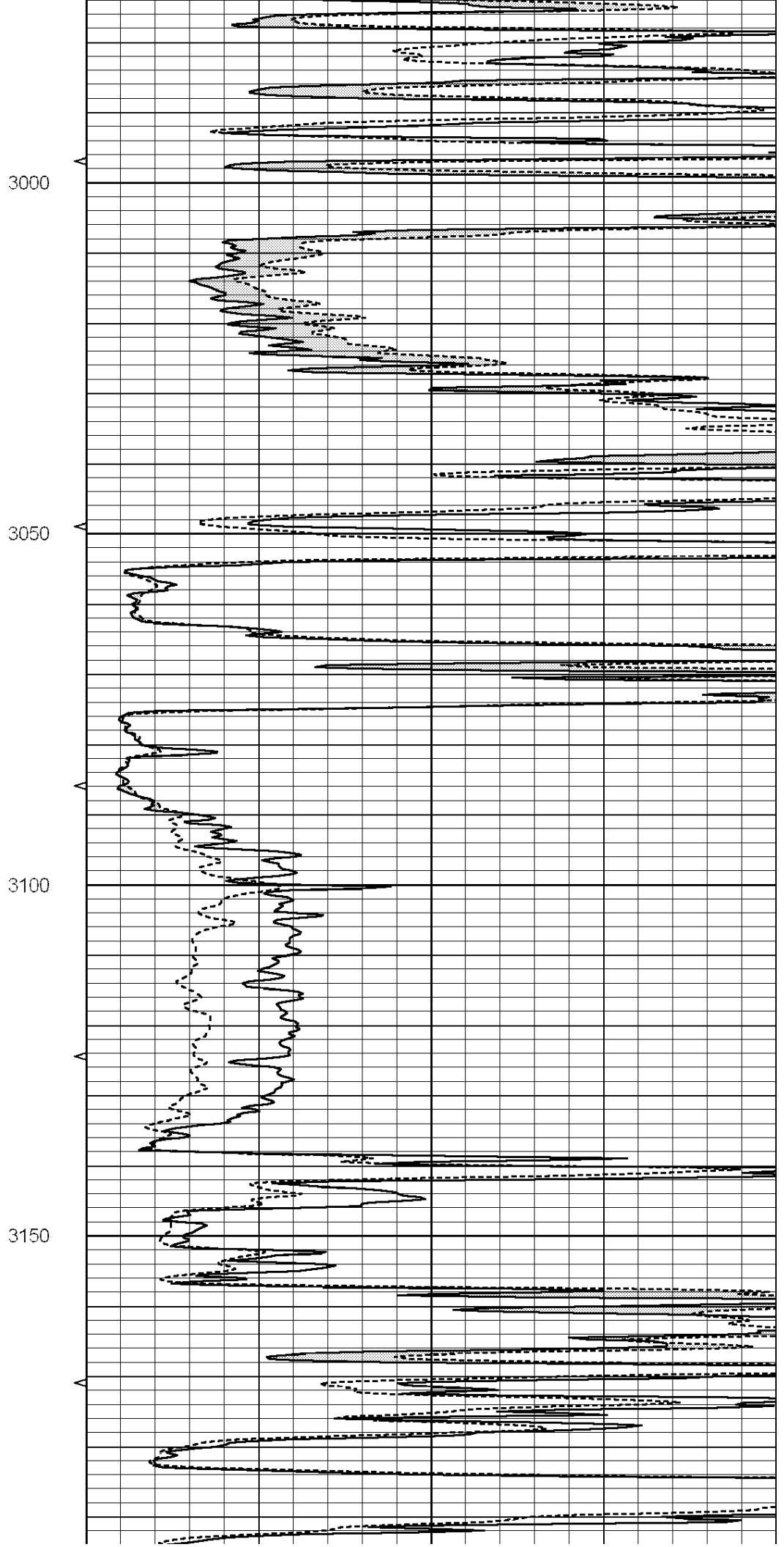
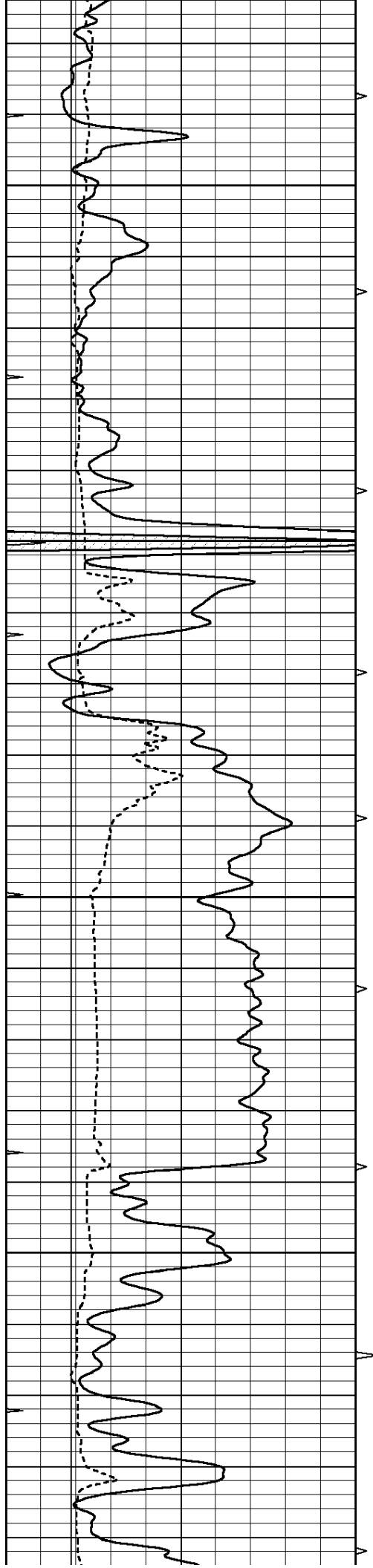


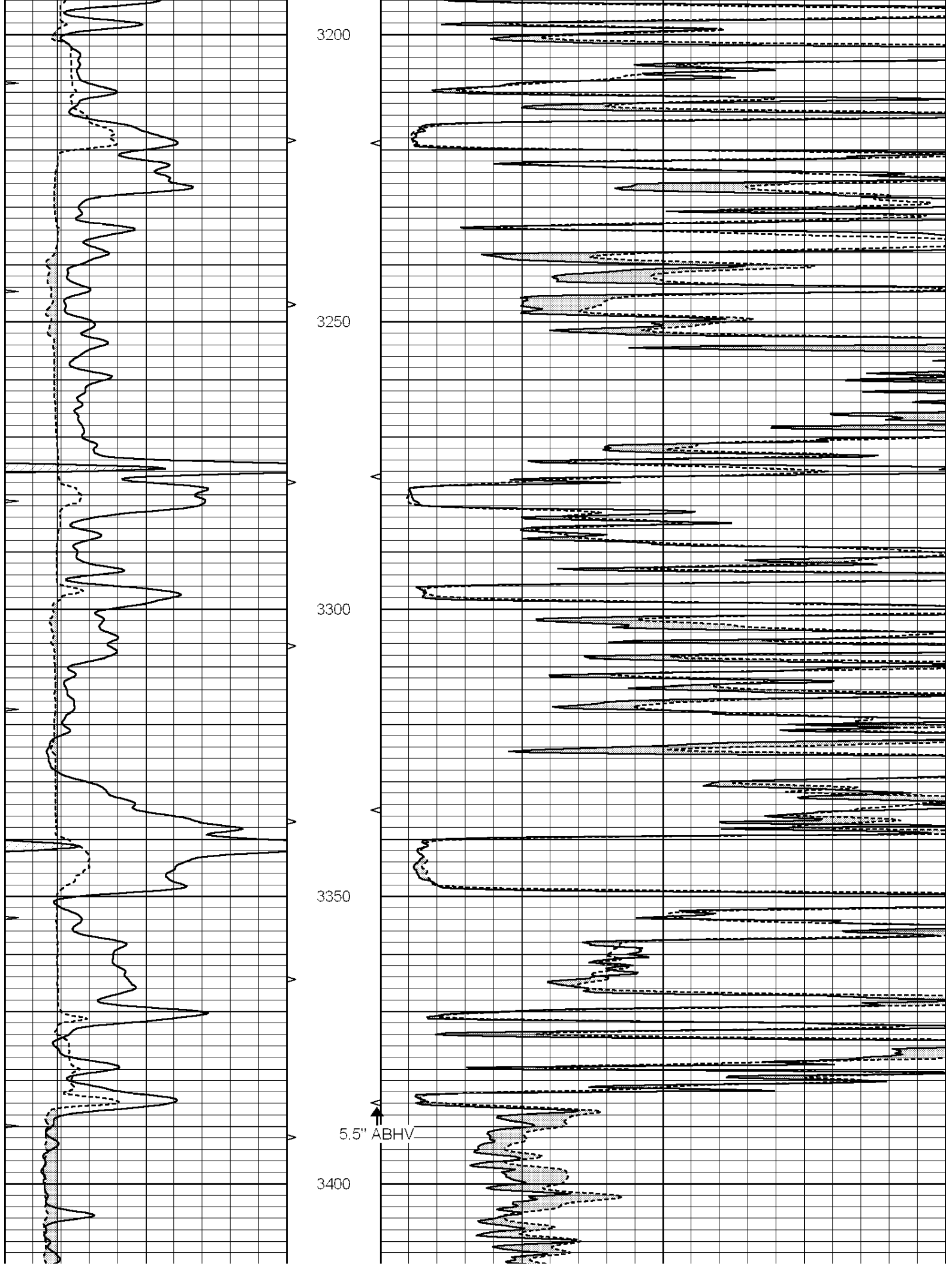
MAIN SECTION

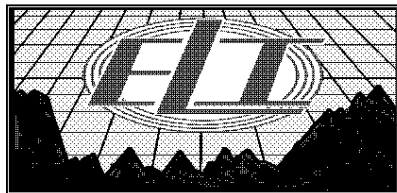
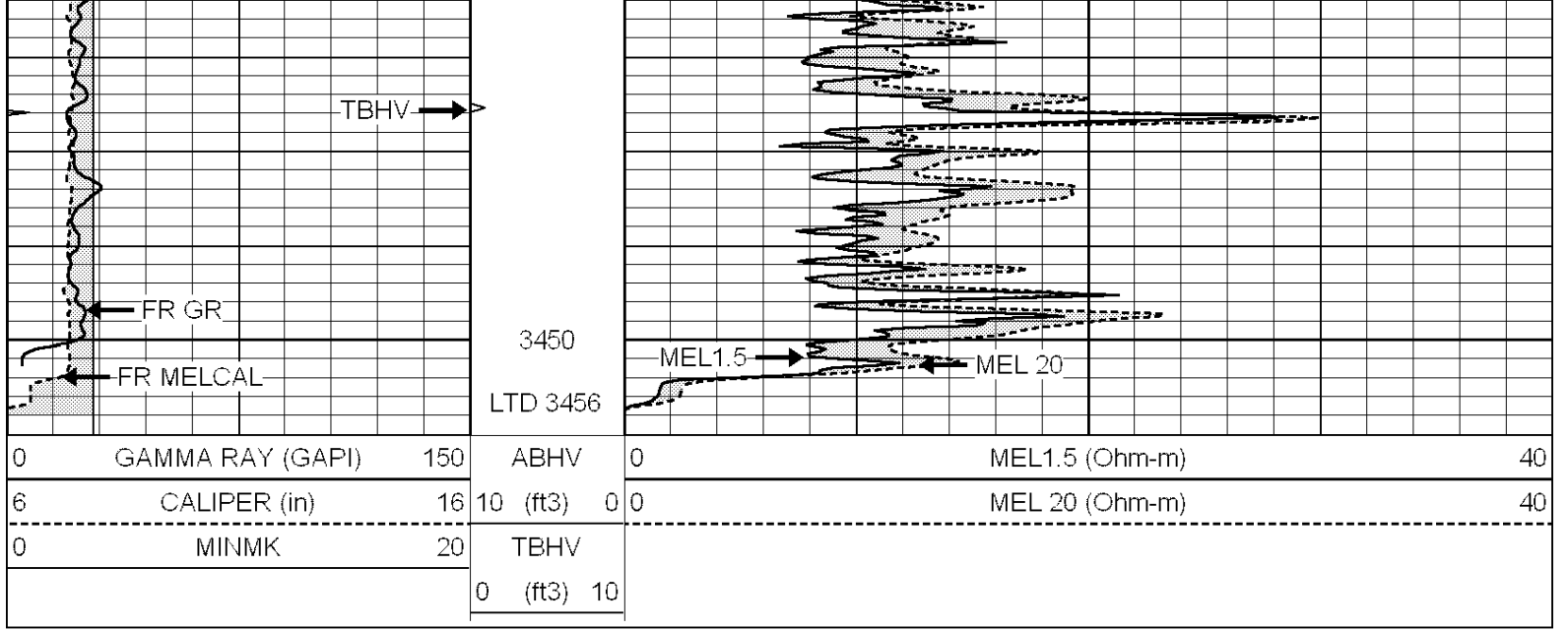
Database File: 1598ddn.db
 Dataset Pathname: pass7.4
 Presentation Format: micro
 Dataset Creation: Wed Aug 30 03:20:11 2017 by Calc SOC 120430
 Charted by: Depth in Feet scaled 1:240

0	GAMMA RAY (GAPI)	150	ABHV	0	MEL1.5 (Ohm-m)	40
6	CALIPER (in)	16	10 (ft3)	0 0	MEL 20 (Ohm-m)	40
0	MINMK	20	TBHV			
			0 (ft3)	10		





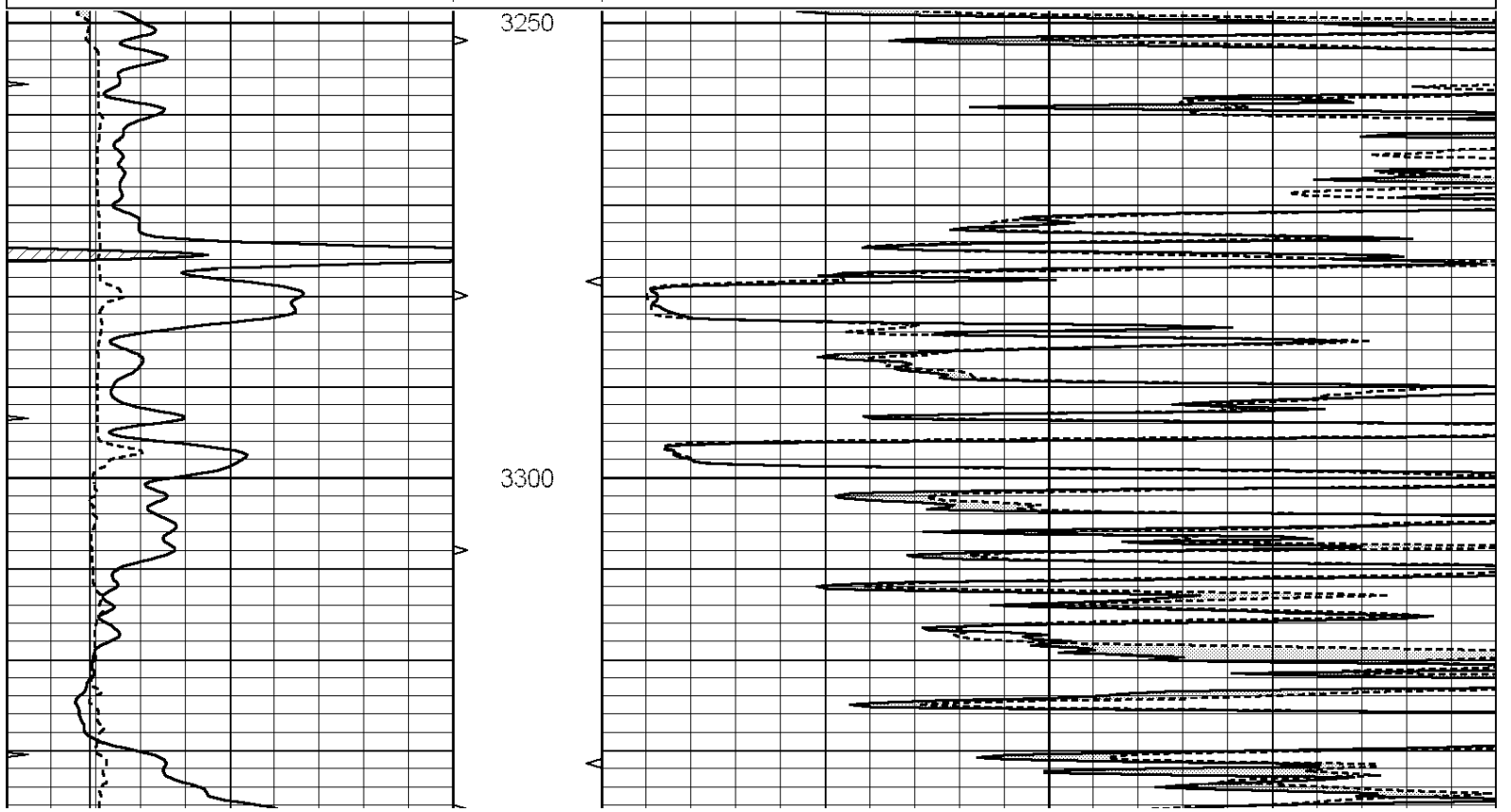


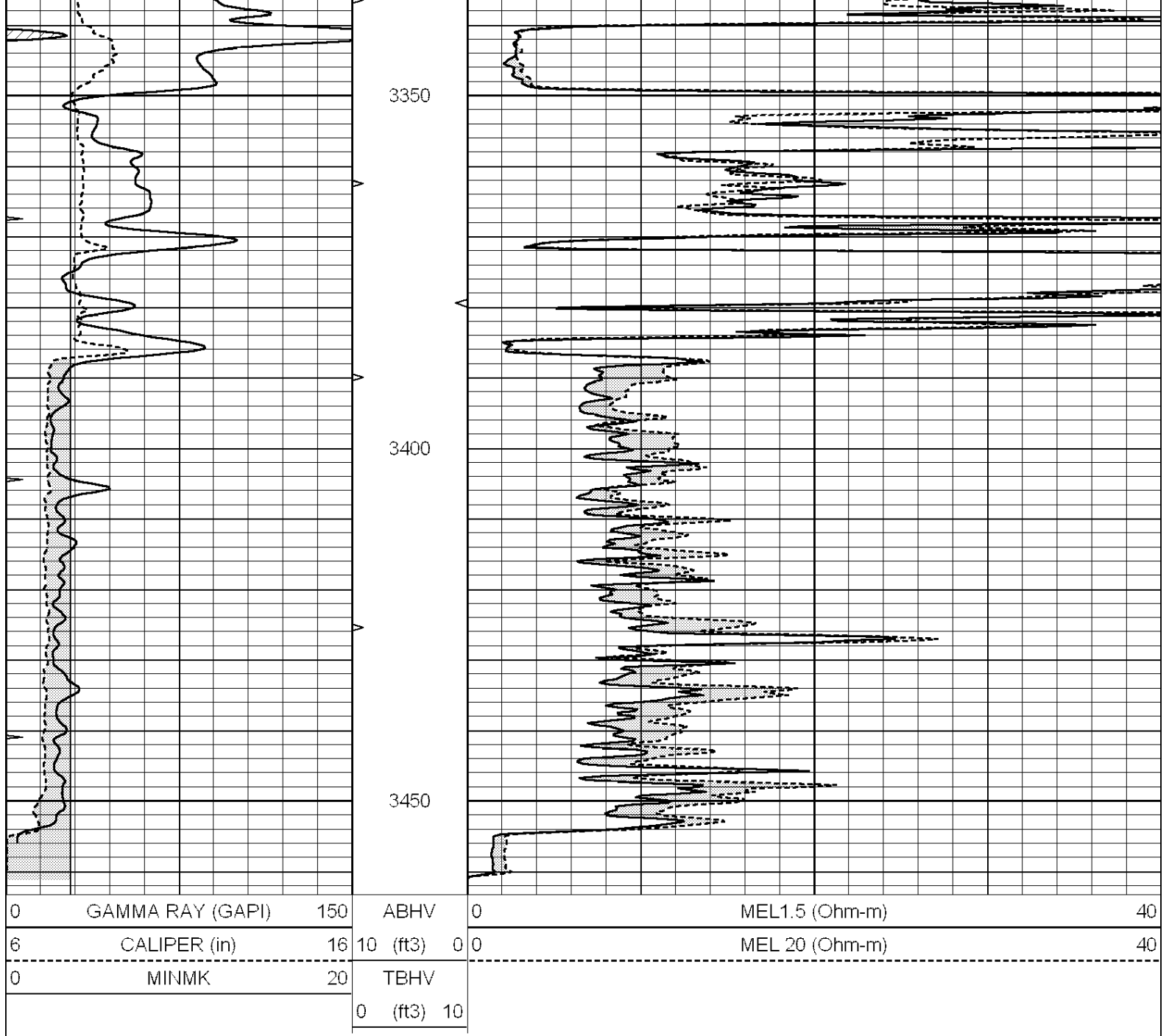


REPEAT SECTION

Database File: 1598ddn.db
 Dataset Pathname: pass6.2
 Presentation Format: micro
 Dataset Creation: Wed Aug 30 02:57:21 2017 by Calc SOC 120430
 Charted by: Depth in Feet scaled 1:240

0	GAMMA RAY (GAPI)	150	ABHV	0	MEL1.5 (Ohm-m)	40
6	CALIPER (in)	16	10 (ft3)	0	MEL 20 (Ohm-m)	40
0	MINMK	20	TBHV			
			0 (ft3)	10		





Calibration Report

Database File: 1598ddn.db
 Dataset Pathname: pass7.4
 Dataset Creation: Wed Aug 30 03:20:11 2017 by Calc SOC 120430

MICRO Calibration Report

Serial Number: 070912
 Tool Model: ProbeN
 Performed: Wed Aug 30 02:58:55 2017

Caliper Calibration: Gain=2.826 Offset=5.718

References	Low Cal	High Cal
Readings	7.100	15.000
	0.489	3.285

1.5" Calibration: Gain=40.000 Offset=0.000

References	Low Cal	High Cal
	0.000	20.000

Readings	0.002	1.239
2" Calibration:	Gain=52.000	Offset=-0.300
References	Low Cal 0.000	High Cal 20.000
Readings	0.003	1.075

Gamma Ray Calibration Report

Serial Number:	070559	
Tool Model:	OPEN_GR	
Performed:	Wed Aug 30 03:11:36 2017	
Calibrator Value:	1.0	GAPI
Background Reading:	0.0	cps
Calibrator Reading:	1.0	cps
Sensitivity:	0.2200	GAPI/cps