



**COMPENSATED  
DENSITY/NEUTRON  
LOG**

Company PHILLIPS EXPLORATION COMPANY L.C.  
 Well MAXWELL#1-22 SHR  
 Field N/A  
 County GOVE  
 State KANSAS

Company PHILLIPS EXPLORATION COMPANY L.C.  
 Well MAXWELL#1-22 SHR  
 Field N/A  
 County GOVE State KANSAS

Location: 2310' FSL & 1460' FWL  
 API # : 15-063-22360-0000  
 Other Services DIL

Permanent Datum GROUND LEVEL Elevation 2616  
 Log Measured From KELLY BUSHING 5' A.G.L.  
 Drilling Measured From KELLY BUSHING

Elevation  
 K.B. 2621  
 D.F. 2619  
 G.L. 2616

Date	07/03/19
Run Number	ONE
Depth Driller	4345
Depth Logger	4345
Bottom Logged Interval	4325
Top Log Interval	3500
Casing Driller	8 5/8" @ 218
Casing Logger	218
Bit Size	7 7/8"
Type Fluid in Hole	CHEMICAL MUD
Density / Viscosity	9.3/57
pH / Fluid Loss	10.5/6.4
Source of Sample	FLOWLINE
Rm @ Meas. Temp	1.1 @ 86F
Rmt @ Meas. Temp	.83 @ 86F
Rmc @ Meas. Temp	1.32 @ 86F
Source of Rmt / Rmc	MEASURED
Rm @ BHT	.79 @ 119F
Time Circulation Stopped	2 HOURS
Time Logger on Bottom	////
Maximum Recorded Temperature	119F
Equipment Number	1523
Location	HAYS, KANSAS
Recorded By	GUS PFANENSTIEL
Witnessed By	PAT DEENIHAN

<<< Fold Here >>>

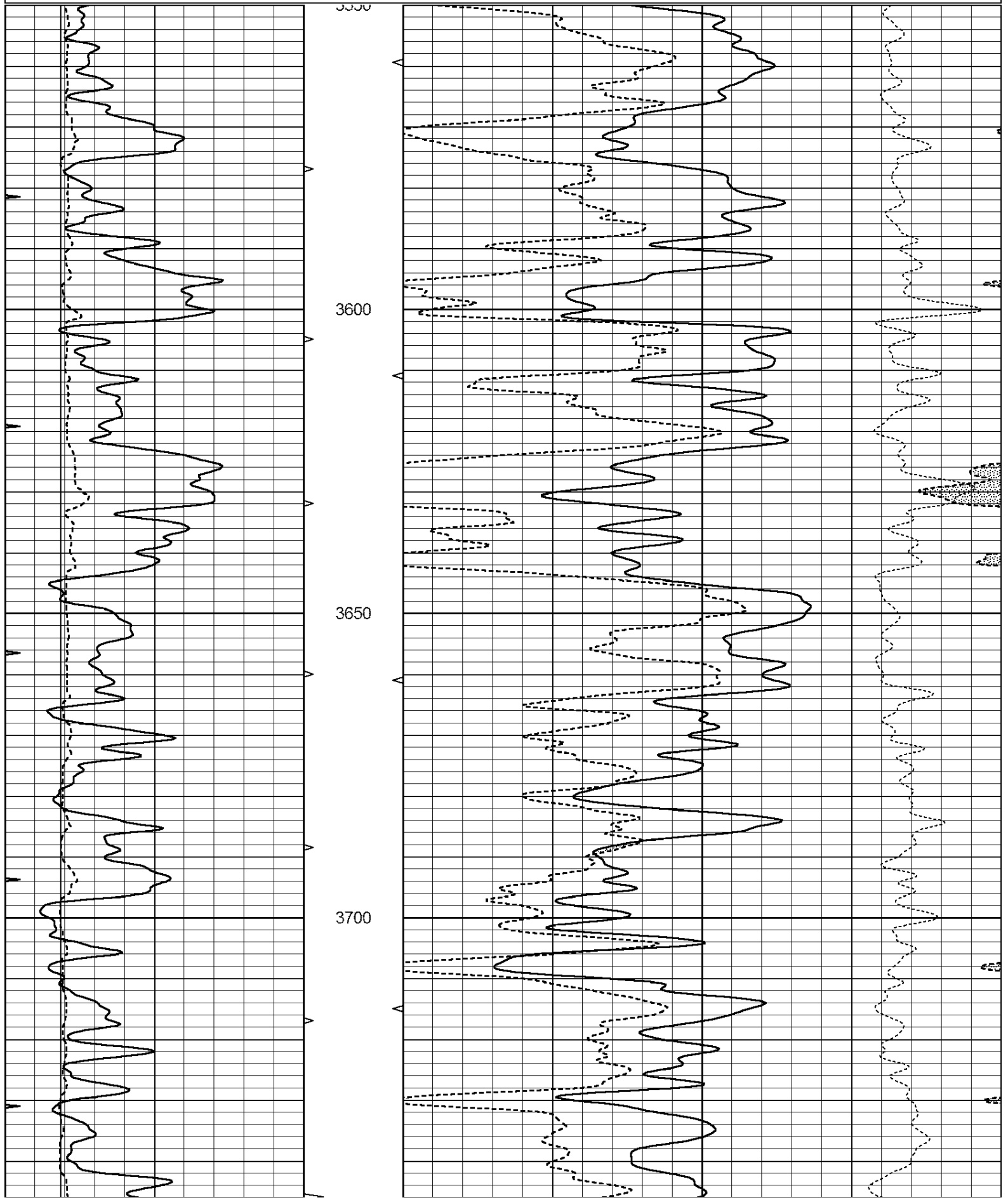
All interpretations are opinions based on inferences from electrical or other measurements and we cannot and do not guarantee the accuracy or correctness of any interpretation, and we shall not, except in the case of gross or willful negligence on our part, be liable or responsible for any loss, costs, damages, or expenses incurred or sustained by anyone resulting from any interpretation made by any of our officers, agents or employees. These interpretations are also subject to our general terms and conditions set out in our current Price Schedule.

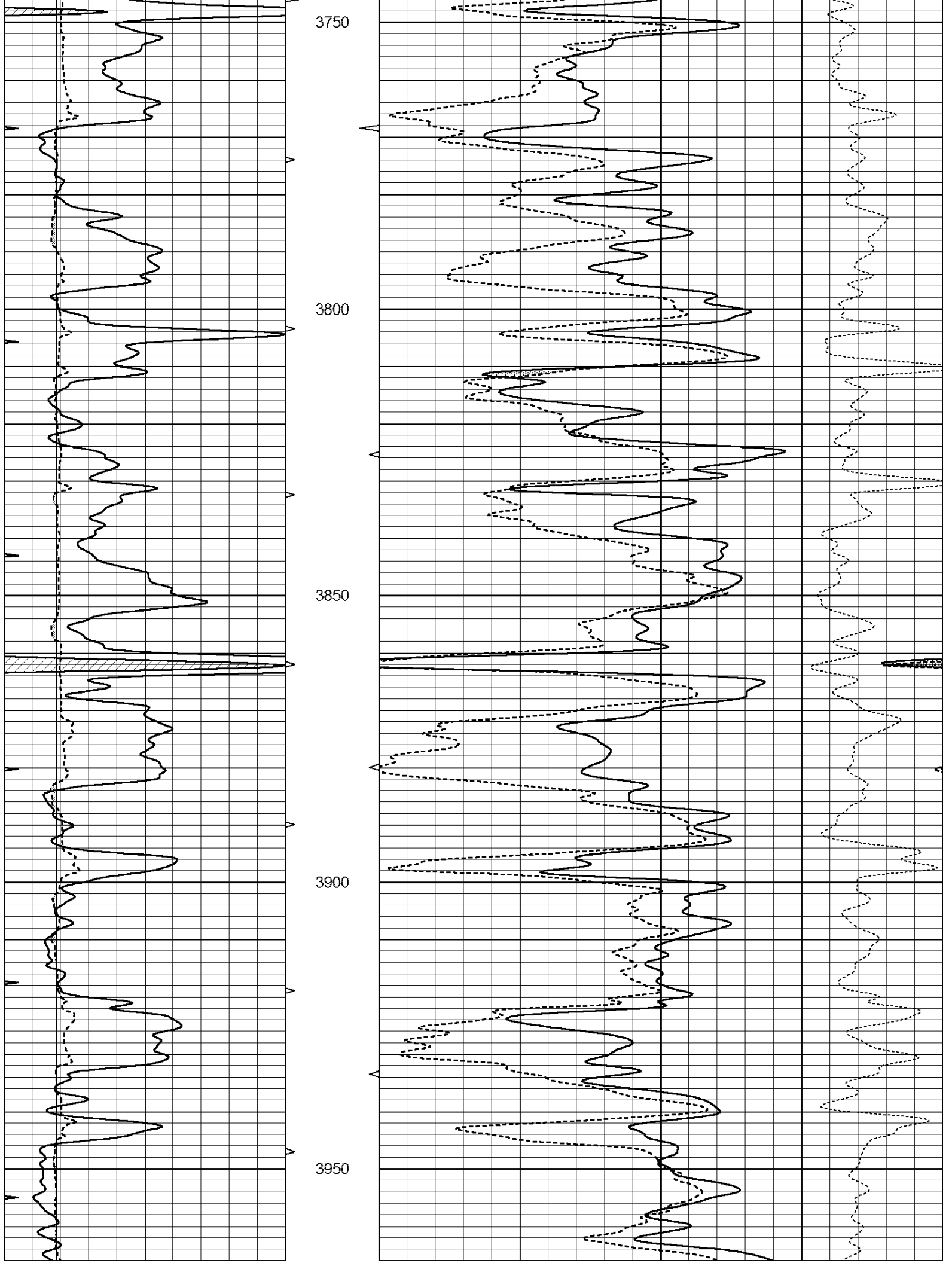
**Comments**

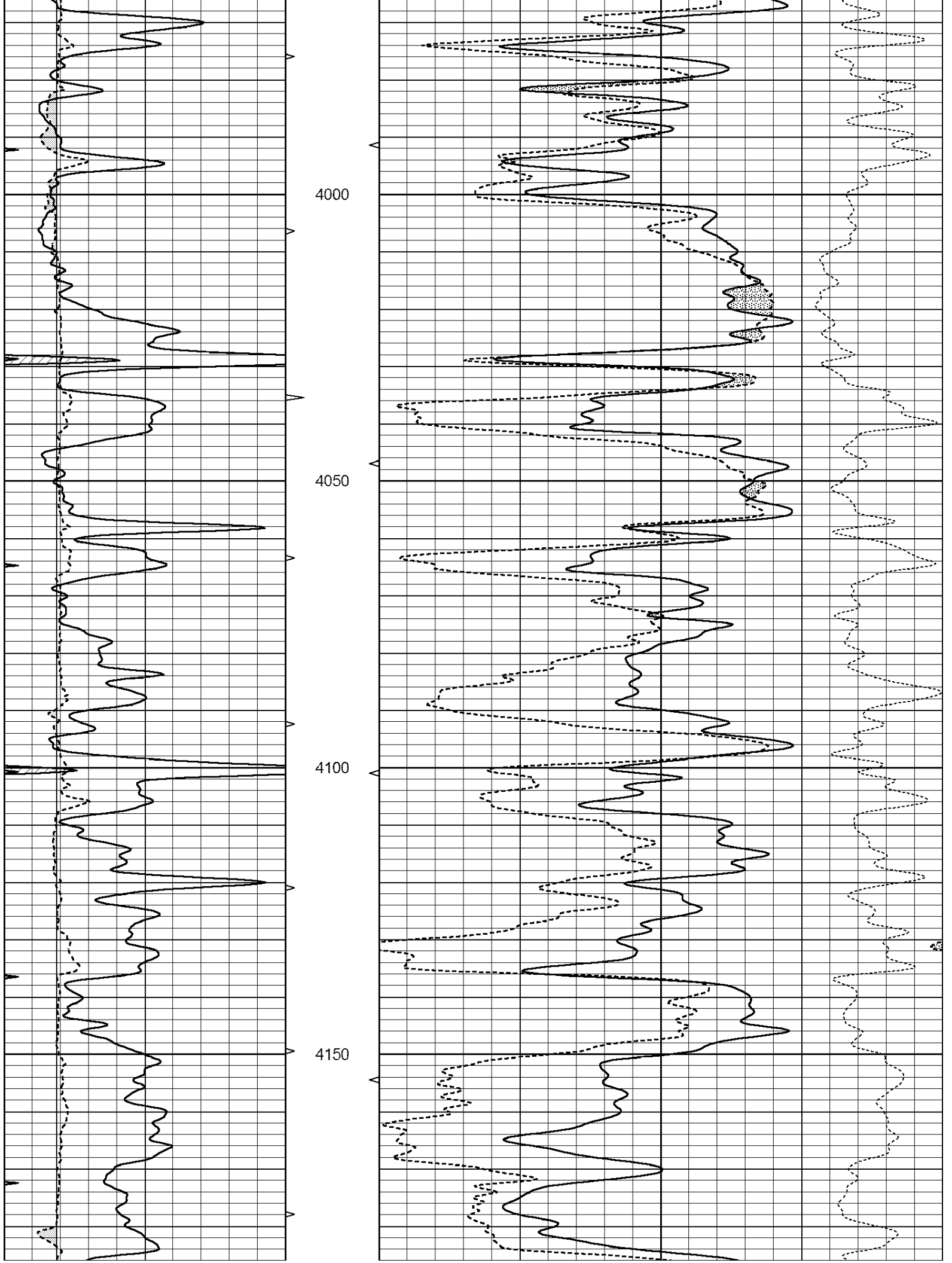
THANK YOU FOR USING ELI WIRELINE, HAYS, KS. (785) 628-6395

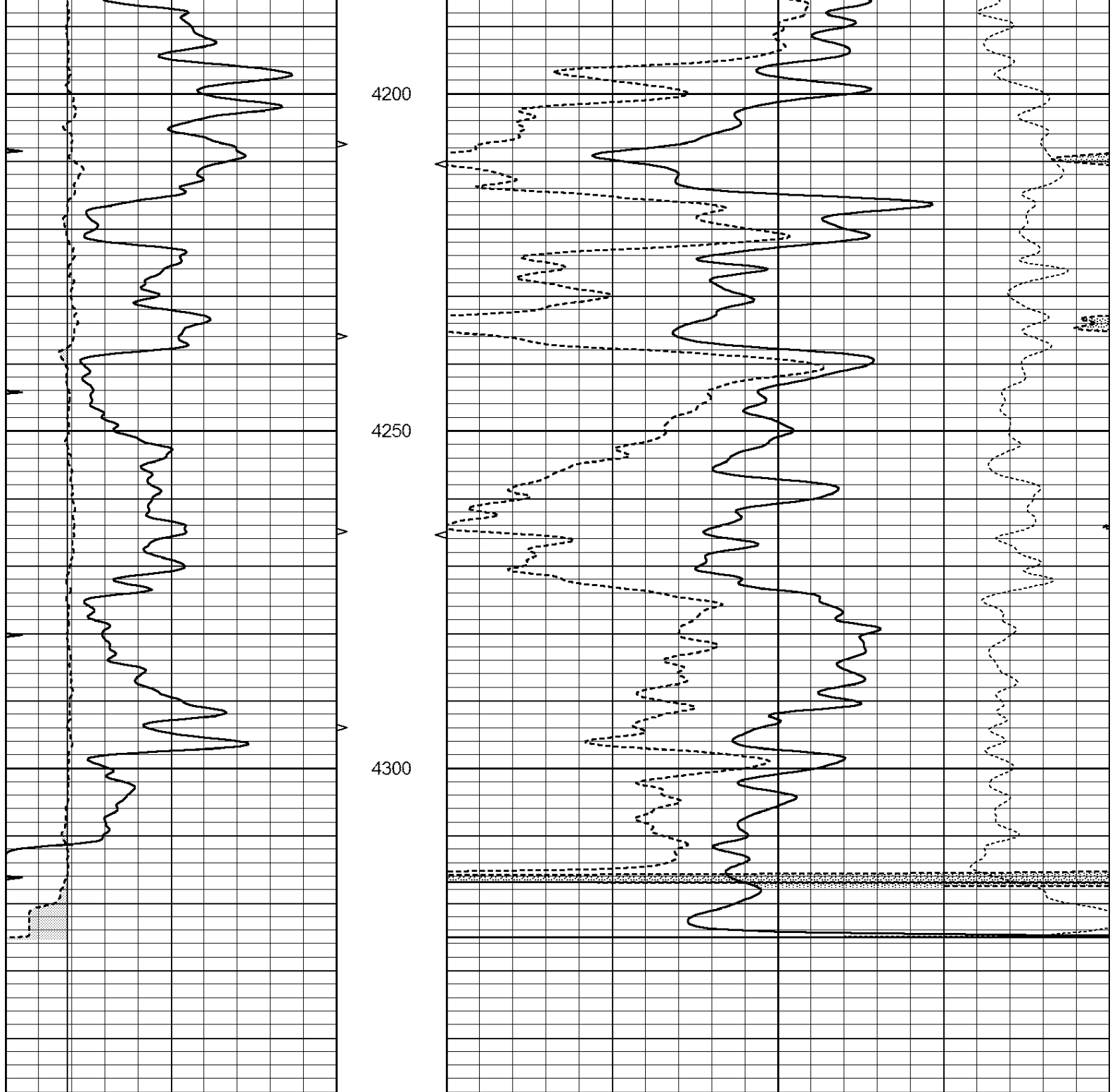
DIRECTIONS  
 QUINTER NORTH TO HIGHWAY 40, EAST PAST ELEVATORS 2 MILES,  
 1.5 NORTH, EAST INTO

0	GAMMA RAY (GAPI)	150	ABHV	30	COMPENSATED DENSITY (pu)	-10
6	CALIPER (in)	16	10 (ft3)	0 30	COMPENSATED NEUTRON (pu)	-10
0	MINMK	20	TBHV		-0.25 CORRECTION (g/cc)	0.25
			0 (ft3)	10		









0	GAMMA RAY (GAPI)	150	ABHV	30	COMPENSATED DENSITY (pu)	-10
6	CALIPER (in)	16	10 (ft3)	0 30	COMPENSATED NEUTRON (pu)	-10
0	MINMK	20	TBHV		-0.25 CORRECTION (g/cc)	0.25
			0 (ft3)	10		