



DUAL INDUCTION LOG

Company PHILLIPS EXPLORATION COMPANY L.C. Well MAXWELL#1-22 SHR Field N/A County GOVE State KANSAS	Company PHILLIPS EXPLORATION COMPANY L.C. Well MAXWELL#1-22 SHR Field N/A County GOVE State KANSAS
Location: 2310' FSL & 1460' FWL API # : 15-063-22360-0000	Other Services CDL/CNL
Permanent Datum Log Measured From Drilling Measured From	GROUND LEVEL Elevation 2616 KELLY BUSHING 5' A.G.L. KELLY BUSHING
SEC 22 TWP 11S RGE 26W	Elevation K.B. 2621 D.F. 2619 G.L. 2616
Date	07/03/19
Run Number	ONE
Depth Driller	4345
Depth Logger	4345
Bottom Logged Interval	4344
Top Log Interval	00
Casing Driller	8 5/8" @ 218
Casing Logger	218
Bit Size	7 7/8"
Type Fluid in Hole	CHEMICAL MUD
Density / Viscosity	9.3/57
pH / Fluid Loss	10.5/6.4
Source of Sample	FLOWLINE
Rm @ Meas. Temp	1.1 @ 86F
Rmt @ Meas. Temp	.83 @ 86F
Rmc @ Meas. Temp	1.32 @ 86F
Source of Rmt / Rmc	MEASURED
Rm @ BHT	.79 @ 119F
Time Circulation Stopped	2 HOURS
Time Logger on Bottom	////
Maximum Recorded Temperature	119F
Equipment Number	1523
Location	HAYS, KANSAS
Recorded By	GUS PFANENSTIEL
Witnessed By	PAT DEENIHAN

<<< Fold Here >>>

All interpretations are opinions based on inferences from electrical or other measurements and we cannot and do not guarantee the accuracy or correctness of any interpretation, and we shall not, except in the case of gross or willful negligence on our part, be liable or responsible for any loss, costs, damages, or expenses incurred or sustained by anyone resulting from any interpretation made by any of our officers, agents or employees. These interpretations are also subject to our general terms and conditions set out in our current Price Schedule.

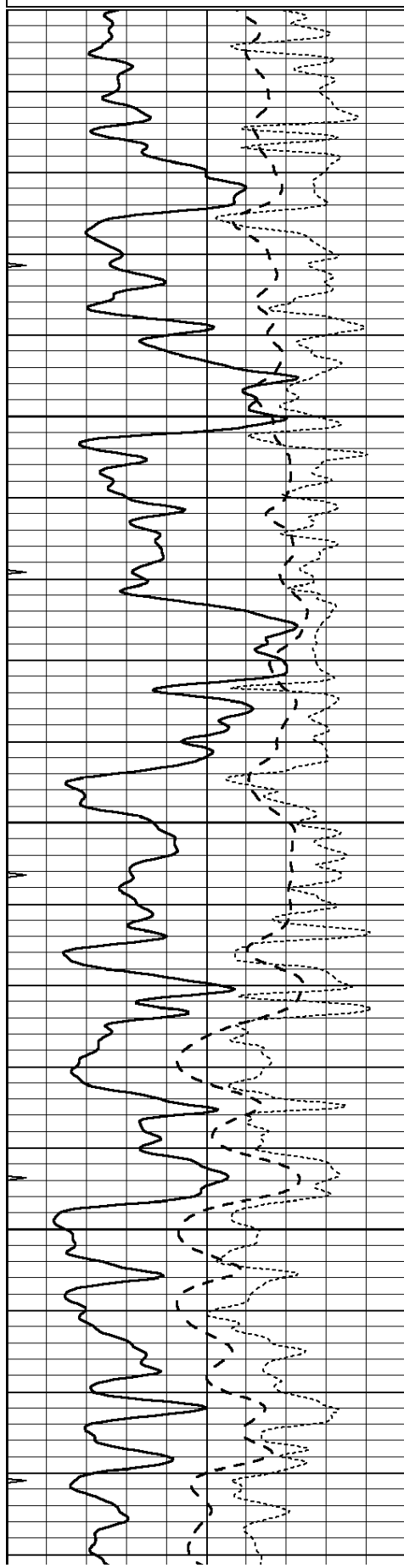
Comments

THANK YOU FOR USING ELI WIRELINE, HAYS, KS. (785) 628-6395

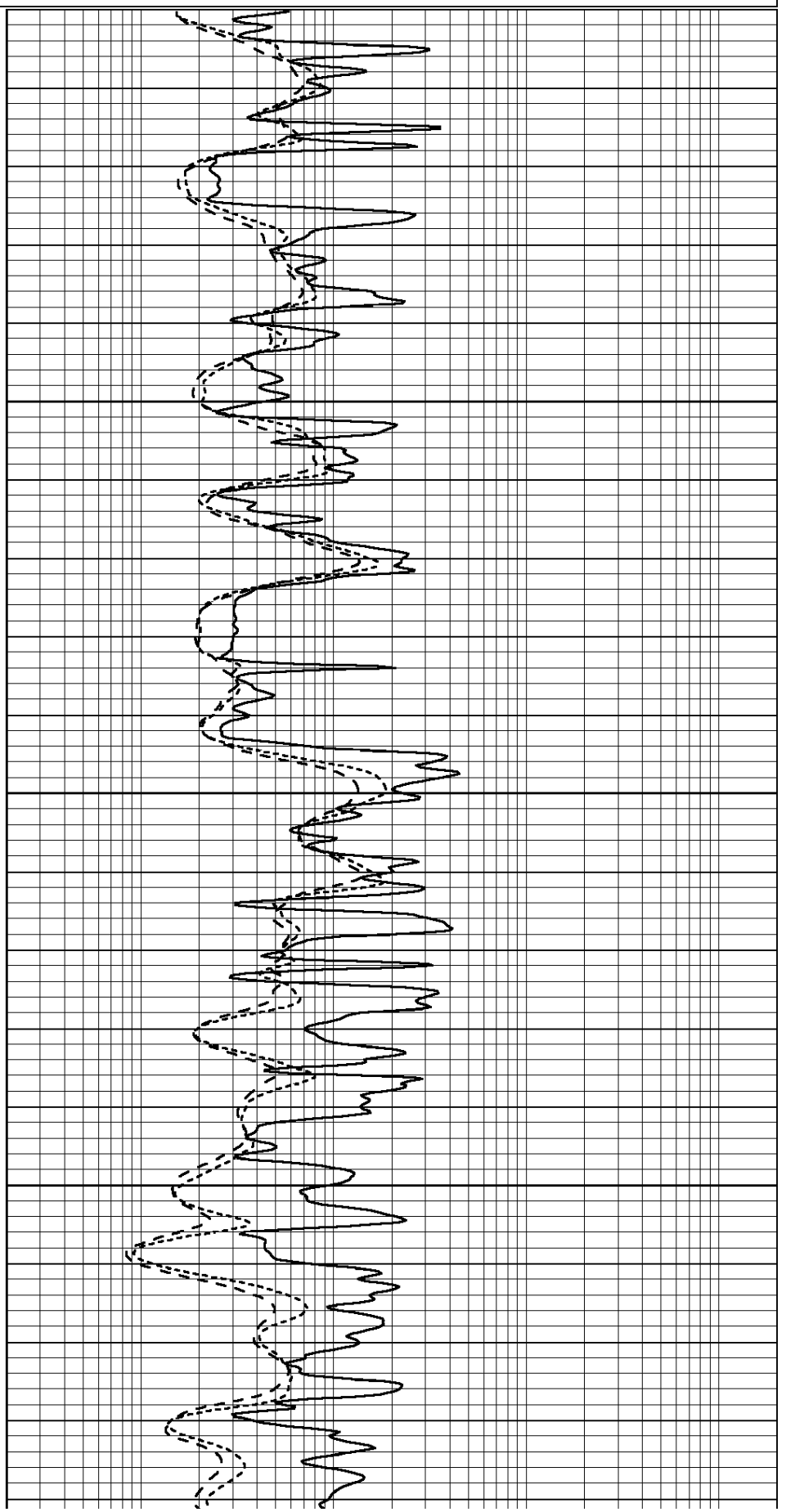
DIRECTIONS
QUINTER NORTH TO HIGHWAY 40, EAST PAST ELEVATORS 2 MILES,
1.5 NORTH, EAST INTO

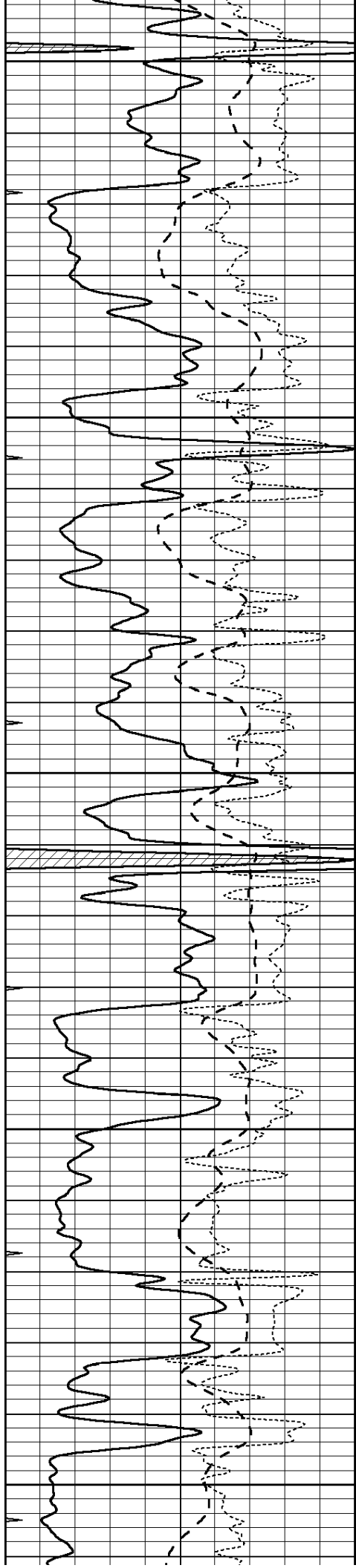
0	GAMMA RAY (GAPI)	150
-100	SP (mV)	100
-250	Rxo/Rt	50
0	MINMK	20

0.2	SHALLOW GUARD (Ohm-m)	2000
0.2	DEEP INDUCTION (Ohm-m)	2000
0.2	MEDIUM INDUCTION (Ohm-m)	2000



3550
3600
3650
3700





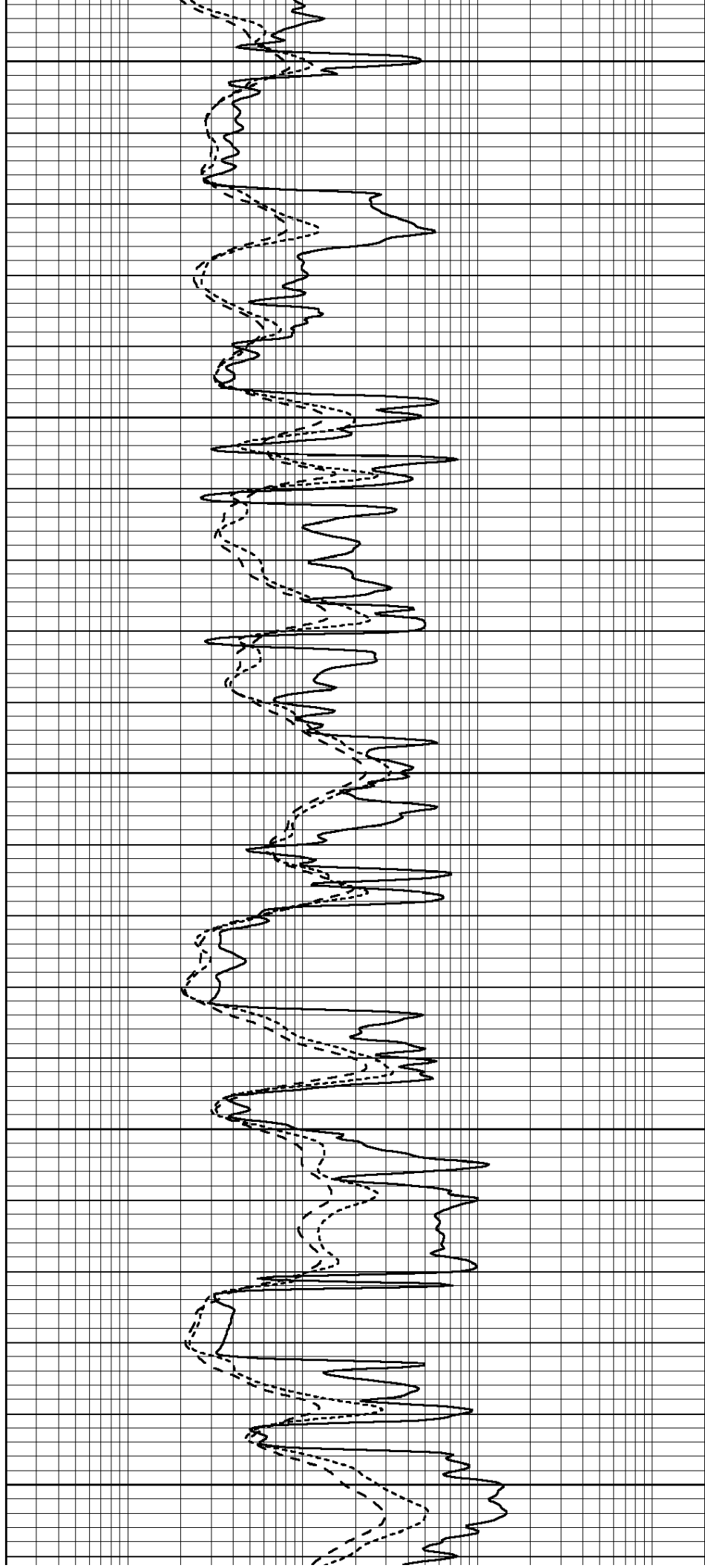
3750

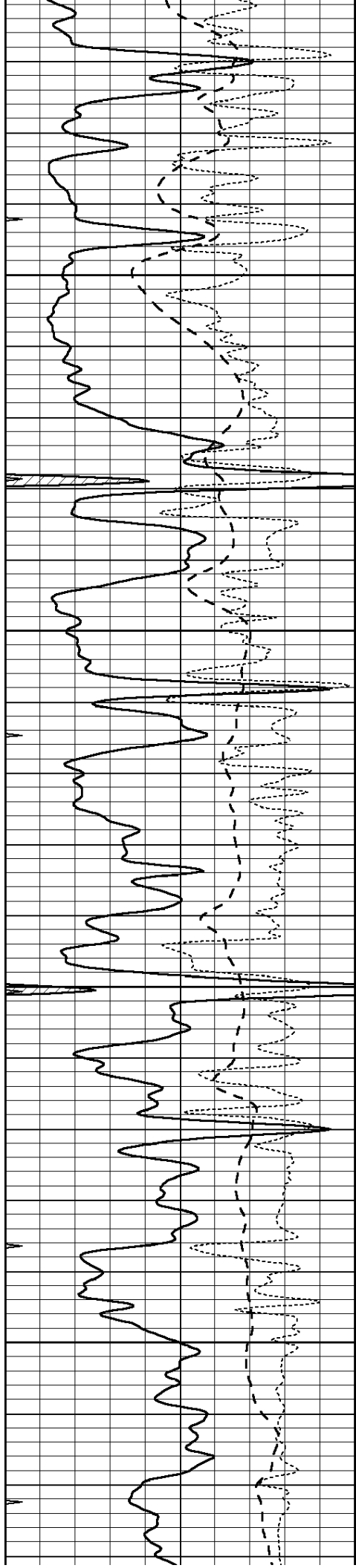
3800

3850

3900

3950



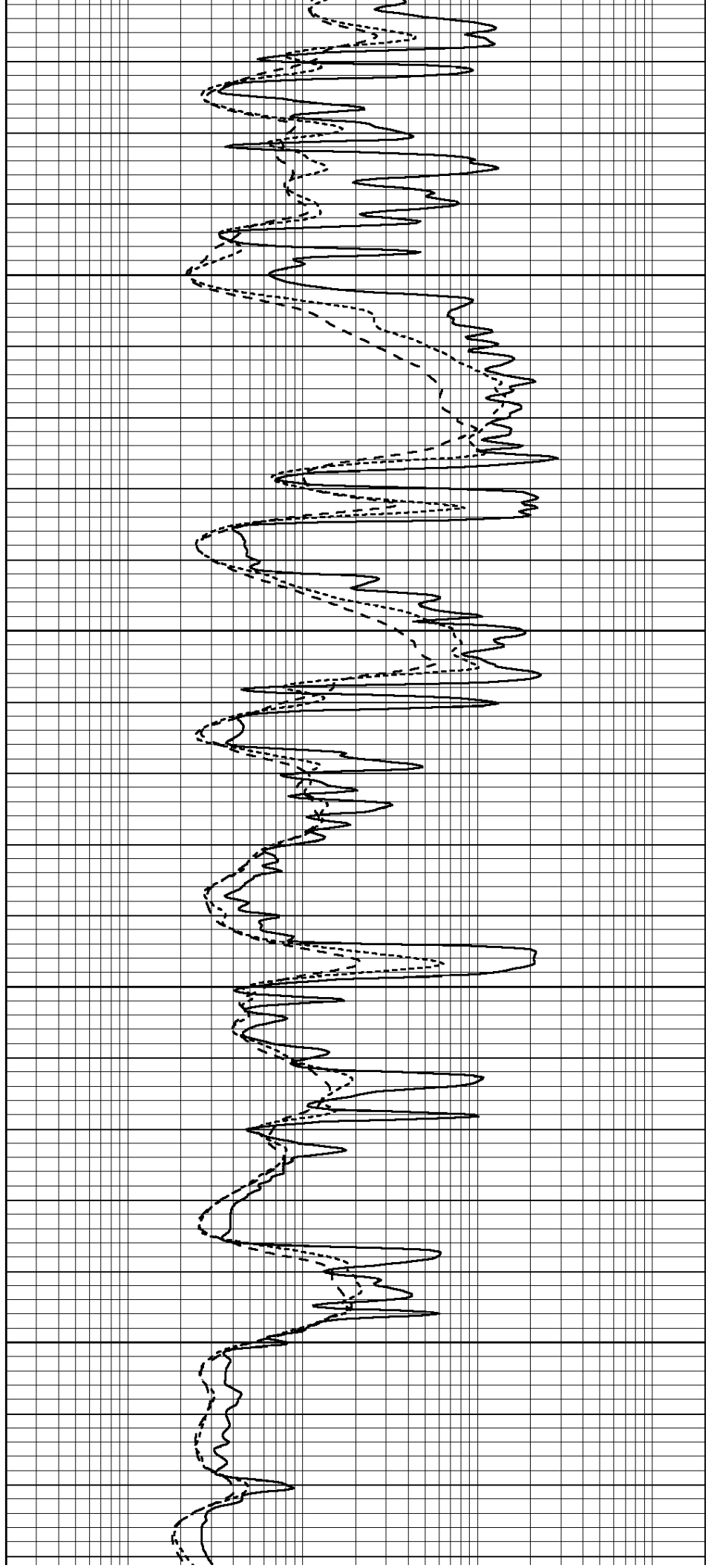


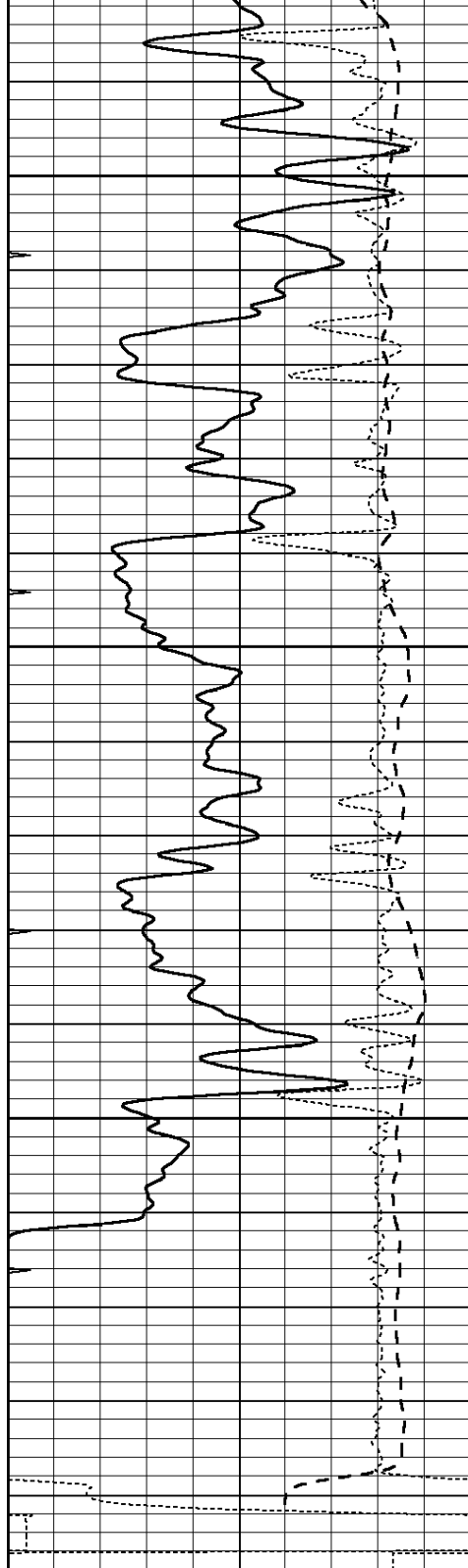
4000

4050

4100

4150



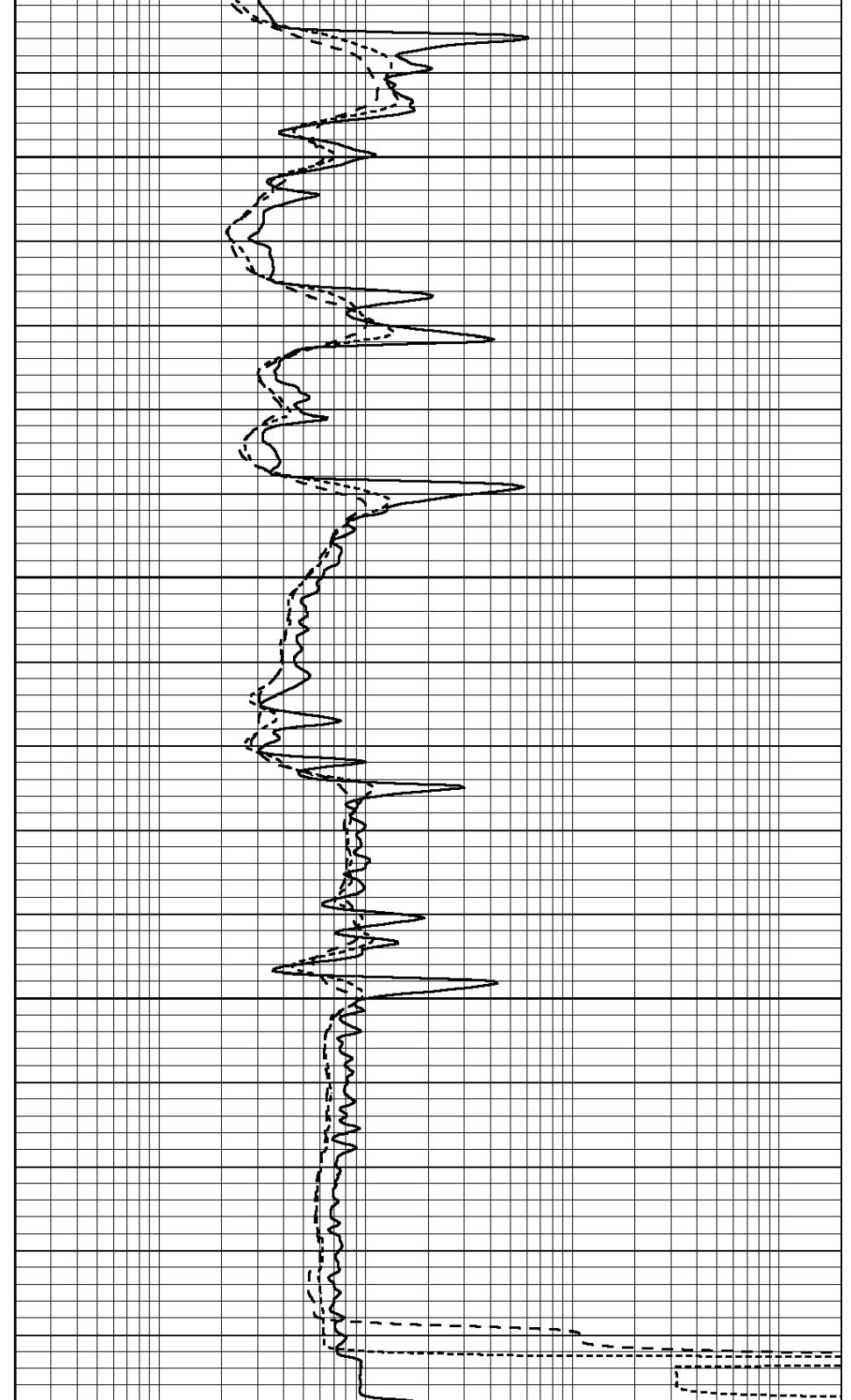


4200

4250

4300

0	GAMMA RAY (GAPI)	150
-100	SP (mV)	100
-250	Rxo/Rt	50
0	MINMK	20



0.2	SHALLOW GUARD (Ohm-m)	2000
0.2	DEEP INDUCTION (Ohm-m)	2000
0.2	MEDIUM INDUCTION (Ohm-m)	2000