



**COMPENSATED
DENSITY / NEUTRON
PE LOG**

Company LOTUS OPERATING COMPANY, LLC.
Well #1 CHARLIE
Field HARDTNER / STRANATHAN
County BARBER
State KANSAS

Company LOTUS OPERATING COMPANY, LLC.
Well #1 CHARLIE
Field HARDTNER / STRANATHAN
County BARBER State KANSAS

Location: API # : 15-007-24321-0000
S/2 - SW - SW
Permanent Datum GROUND LEVEL Elevation 1472
Log Measured From KELLY BUSHING 8' A.G.L.
Drilling Measured From KELLY BUSHING
Other Services
DIL/MEL
SONIIC
Elevation
K.B. 1480
D.F. 1478
G.L. 1472

Date	8/6/17		
Run Number	ONE		
Depth Driller	5650		
Depth Logger	5648		
Bottom Logged Interval	5624		
Top Log Interval	3600		
Casing Driller	8 5/8"@265'		
Casing Logger	265		
Bit Size	7 7/8"		
Type Fluid in Hole	CHEMICAL MUD	CHLORIDES 3,000 PPM	
Density / Viscosity	9.147		
pH / Fluid Loss	11.0/10.0		
Source of Sample	FLOWLINE		
Rim @ Meas. Temp	.600@80F		
Rmf @ Meas. Temp	.450@80F		
Rmc @ Meas. Temp	.720@80F		
Source of Rmf / Rmc	MEASUREMENT		
Rim @ BHT	.366@131F		
Time Circulation Stopped	3 HOURS		
Time Logger on Bottom	6:30 A.M.		
Maximum Recorded Temperature	131F		
Equipment Number	922339		
Location	HAYS, KANSAS		
Recorded By	JEFF LUEBBERS		
Witnessed By	TIM HELLMAN		

<<< Fold Here >>>

All interpretations are opinions based on inferences from electrical or other measurements and we cannot and do not guarantee the accuracy or correctness of any interpretation, and we shall not, except in the case of gross or willful negligence on our part, be liable or responsible for any loss, costs, damages, or expenses incurred or sustained by anyone resulting from any interpretation made by any of our officers, agents or employees. These interpretations are also subject to our general terms and conditions set out in our current Price Schedule.

Comments

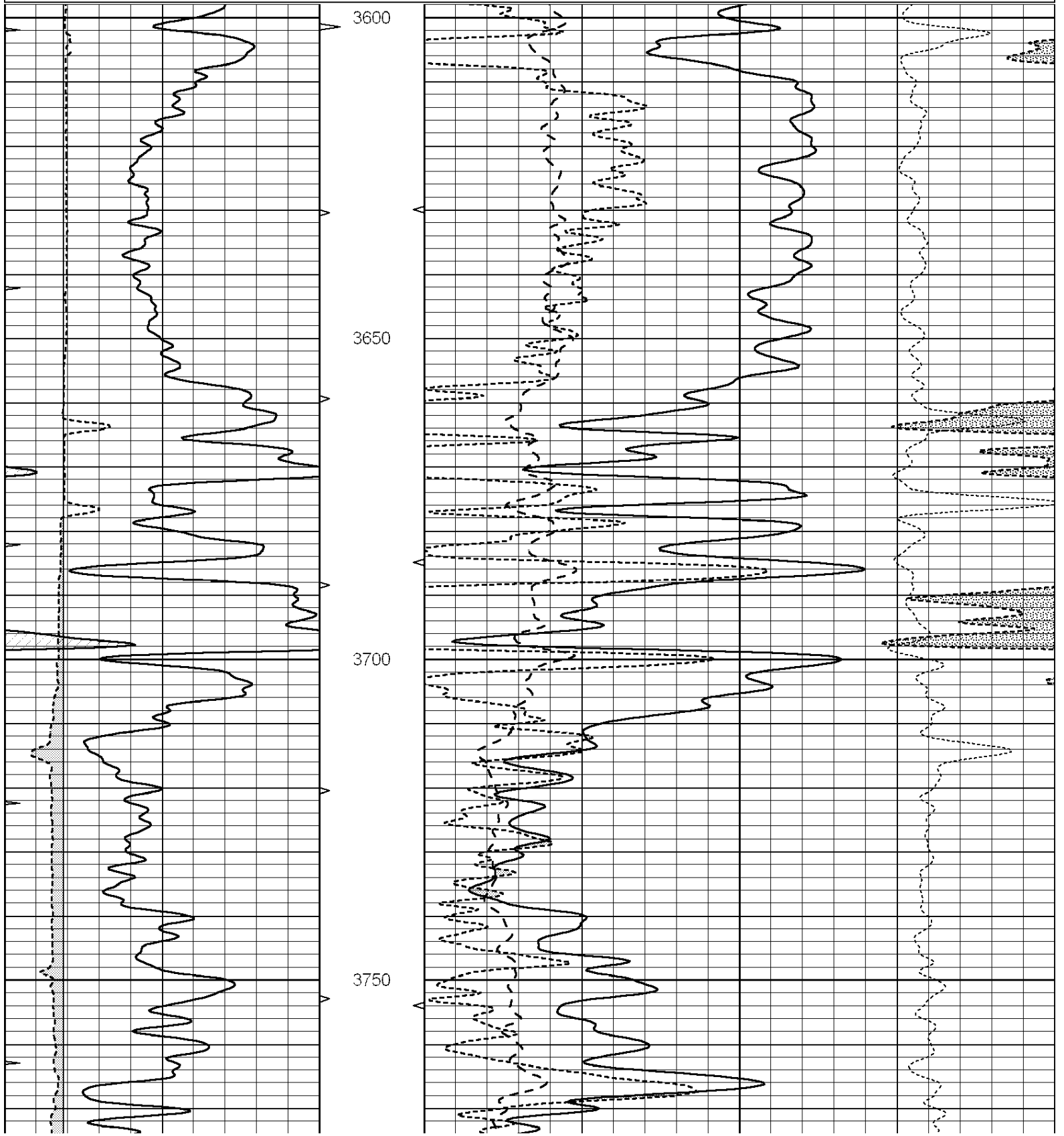
THANK YOU FOR USING ELI WIRELINE HAYS, KANSAS (785) 628-6395
DIRECTIONS
HARDTNER, KANSAS, 3W. PAST "GYP HILL RD", S. INTO

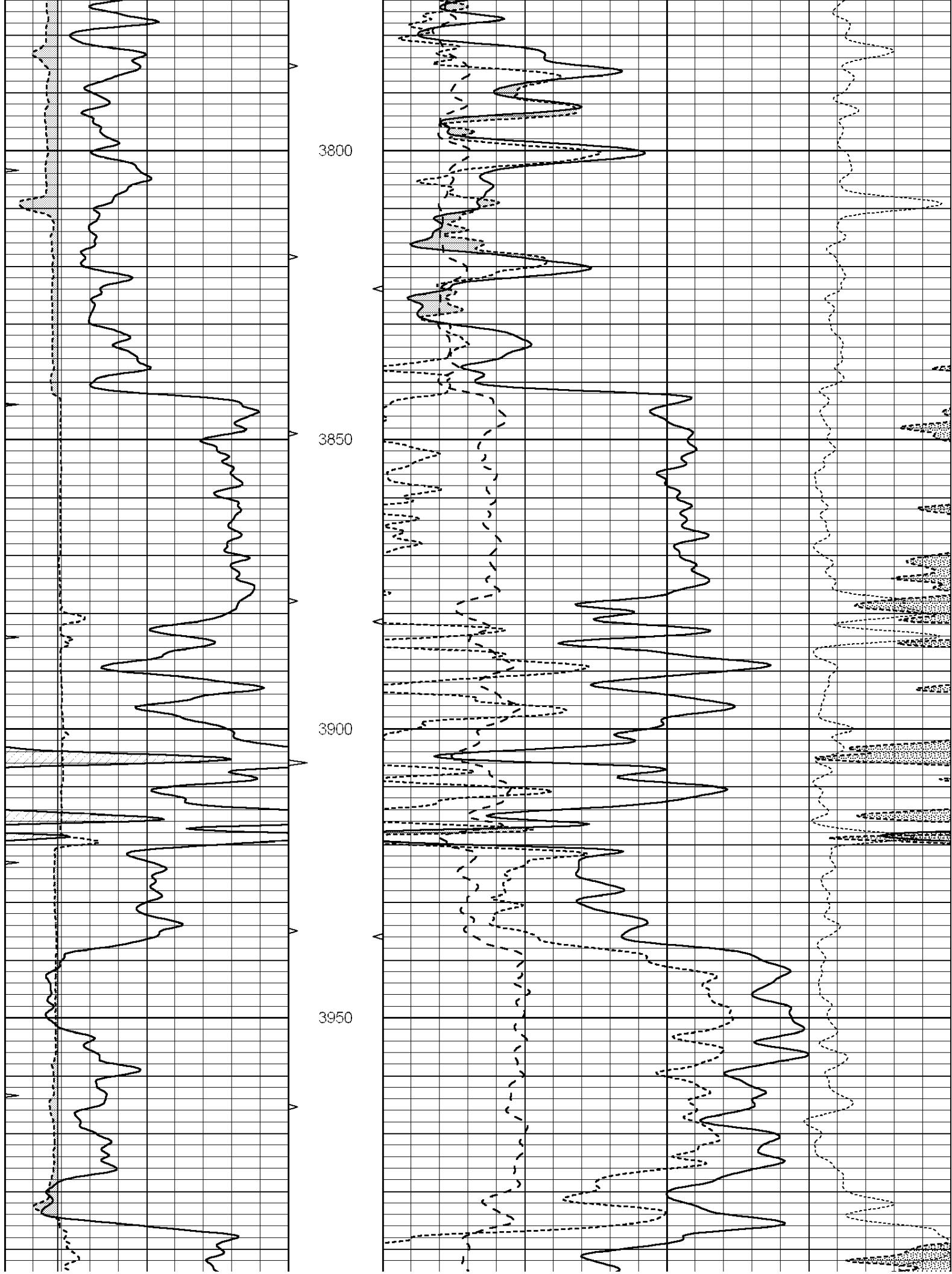


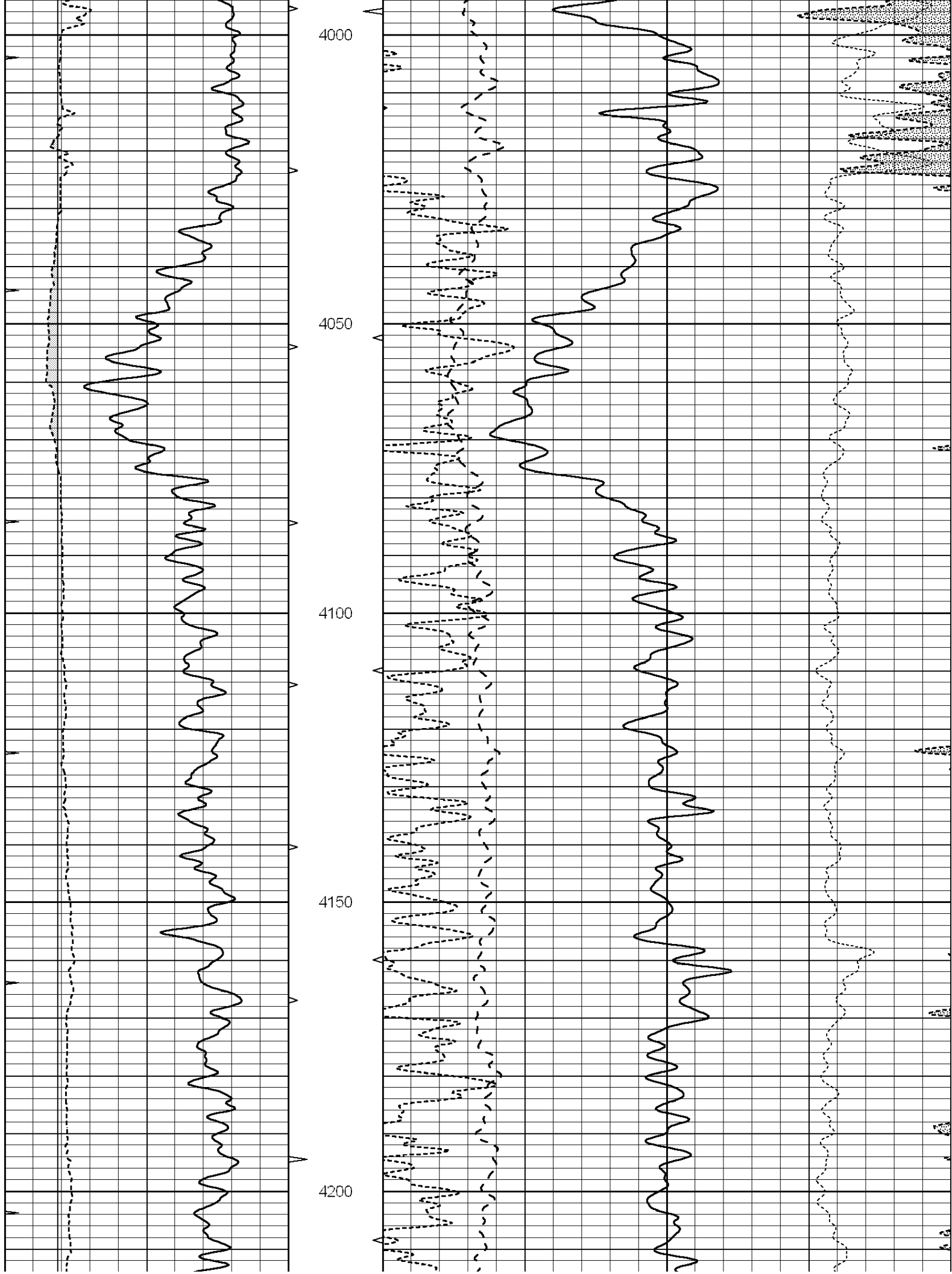
MAIN SECTION

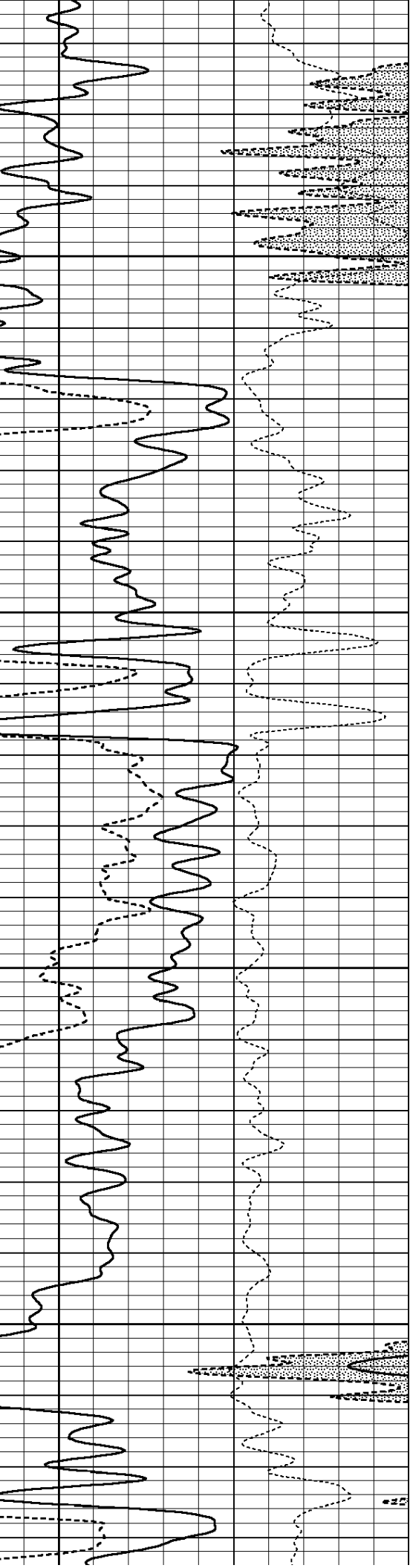
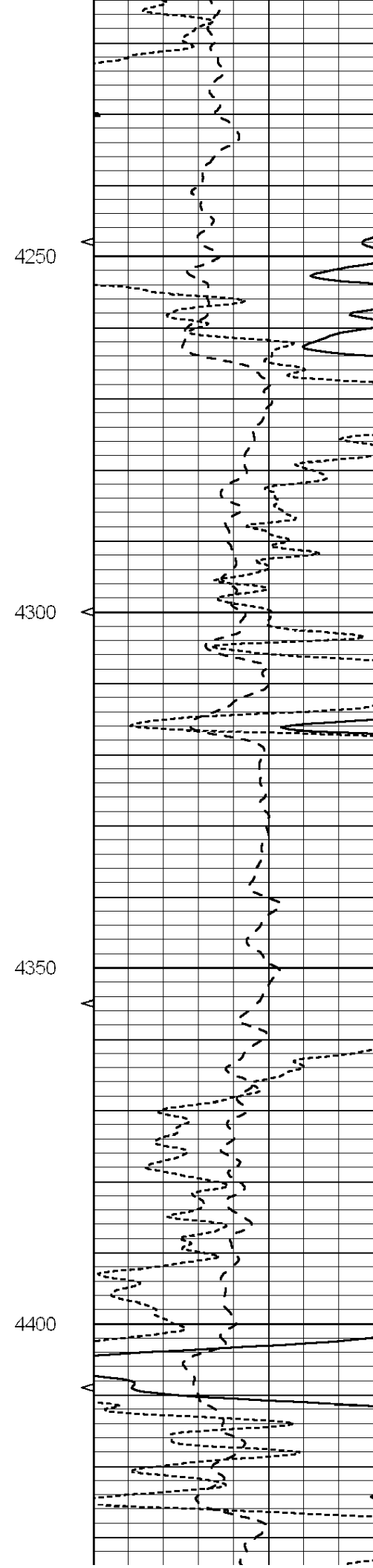
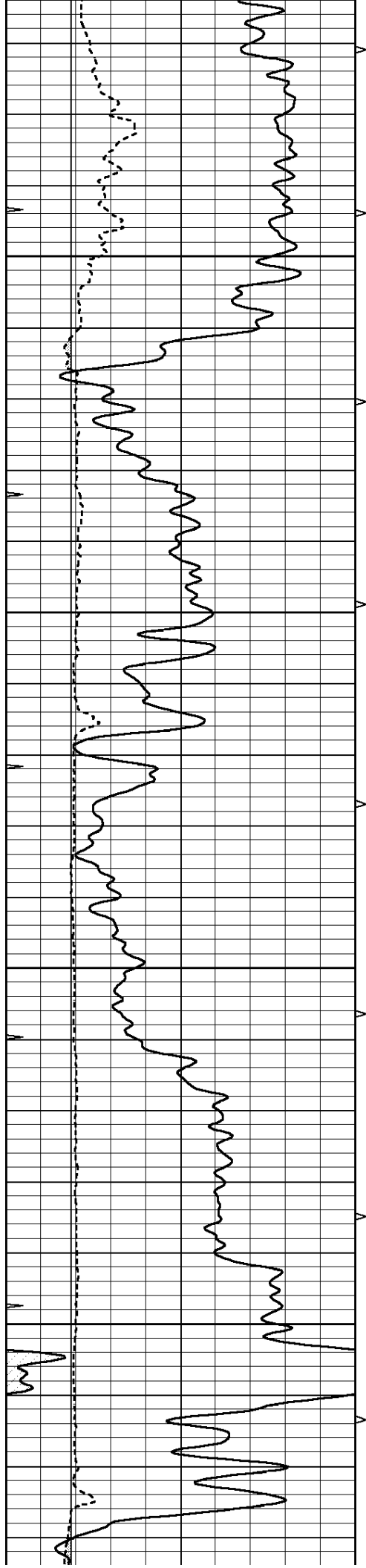
Database File: 1594pe.db
 Dataset Pathname: pass3.6
 Presentation Format: ldt_neu
 Dataset Creation: Sun Aug 06 08:23:28 2017
 Charted by: Depth in Feet scaled 1:240

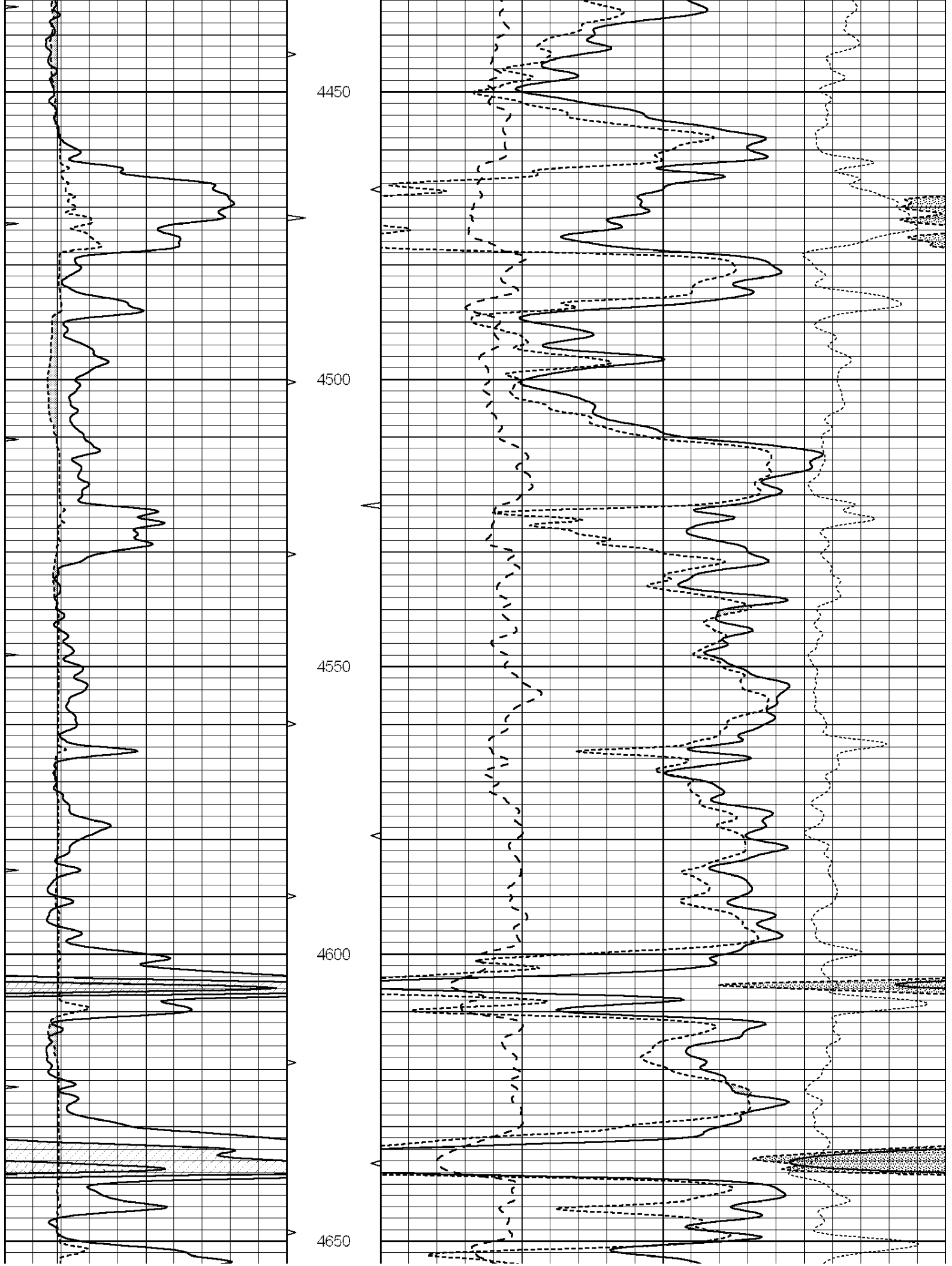
0	GAMMA RAY (GAPI)	150	ABHV	30	COMPENSATED DENSITY (pu)		-10
6	CALIPER (in)	16	10 (ft3)	0	COMPENSATED NEUTRON (pu)		-10
0	MINMK	20	TBHV	0	PE	10	-0.25 CORRECTION (g/cc) 0.25
			0 (ft3)	10			

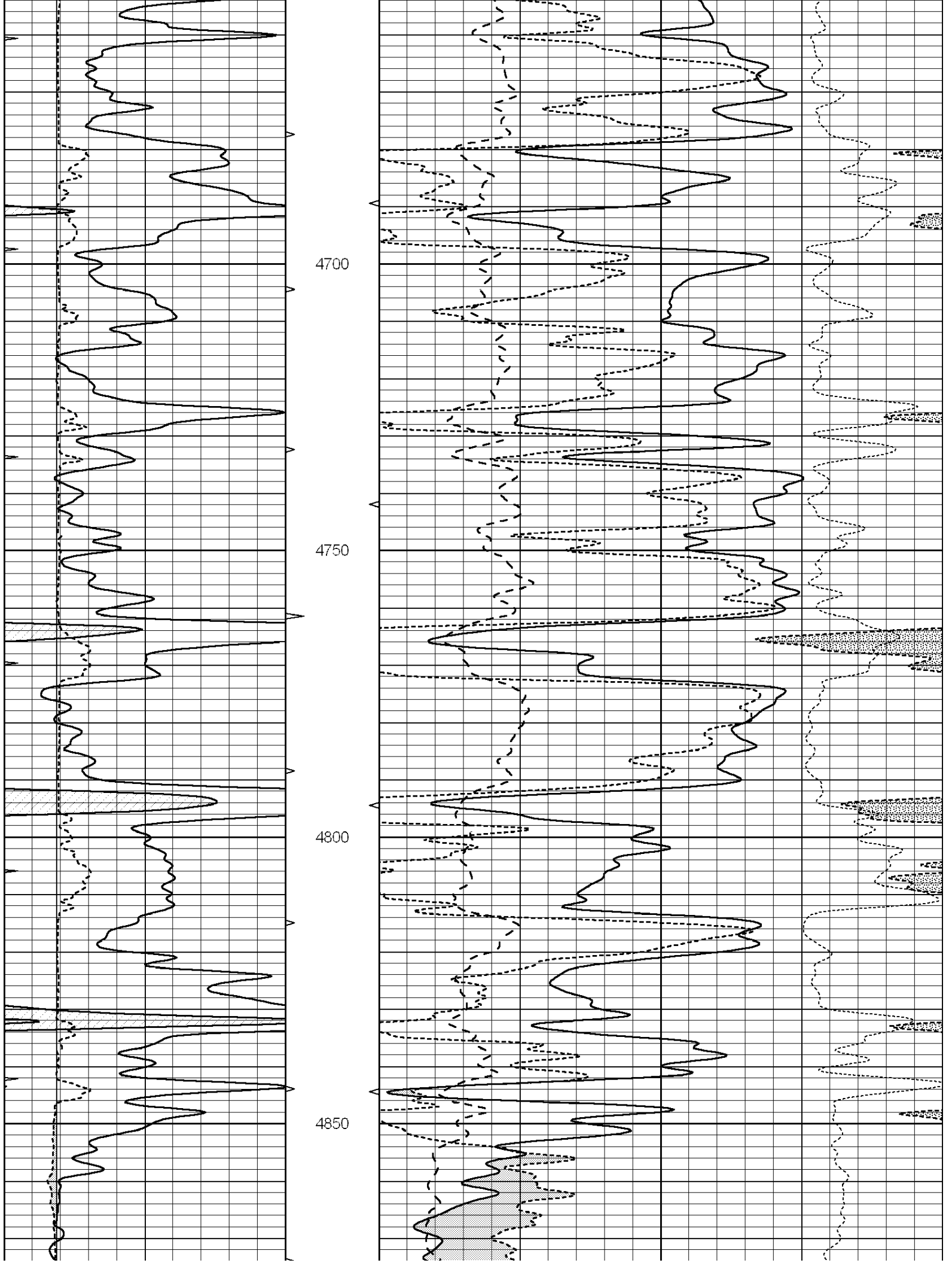


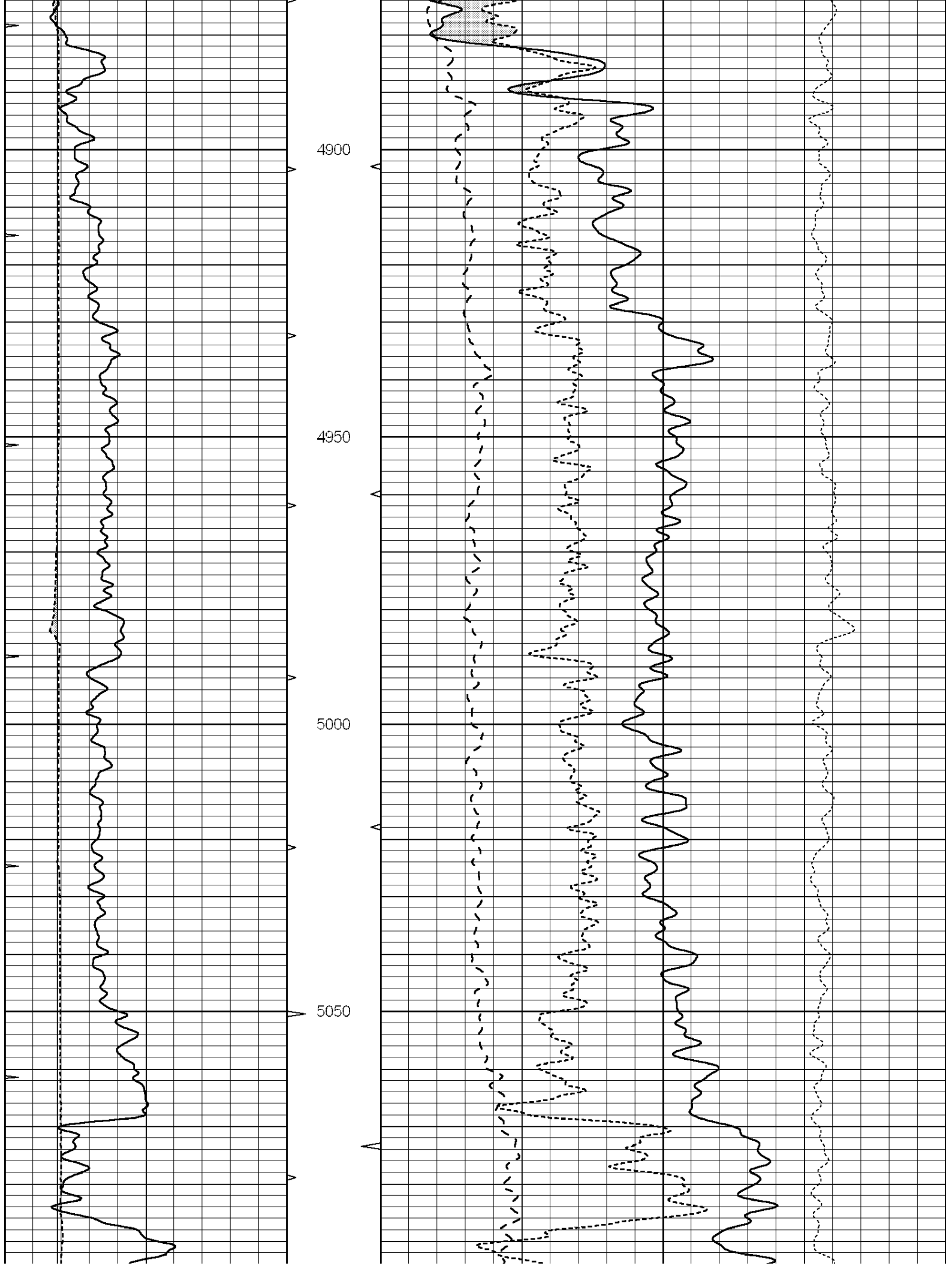


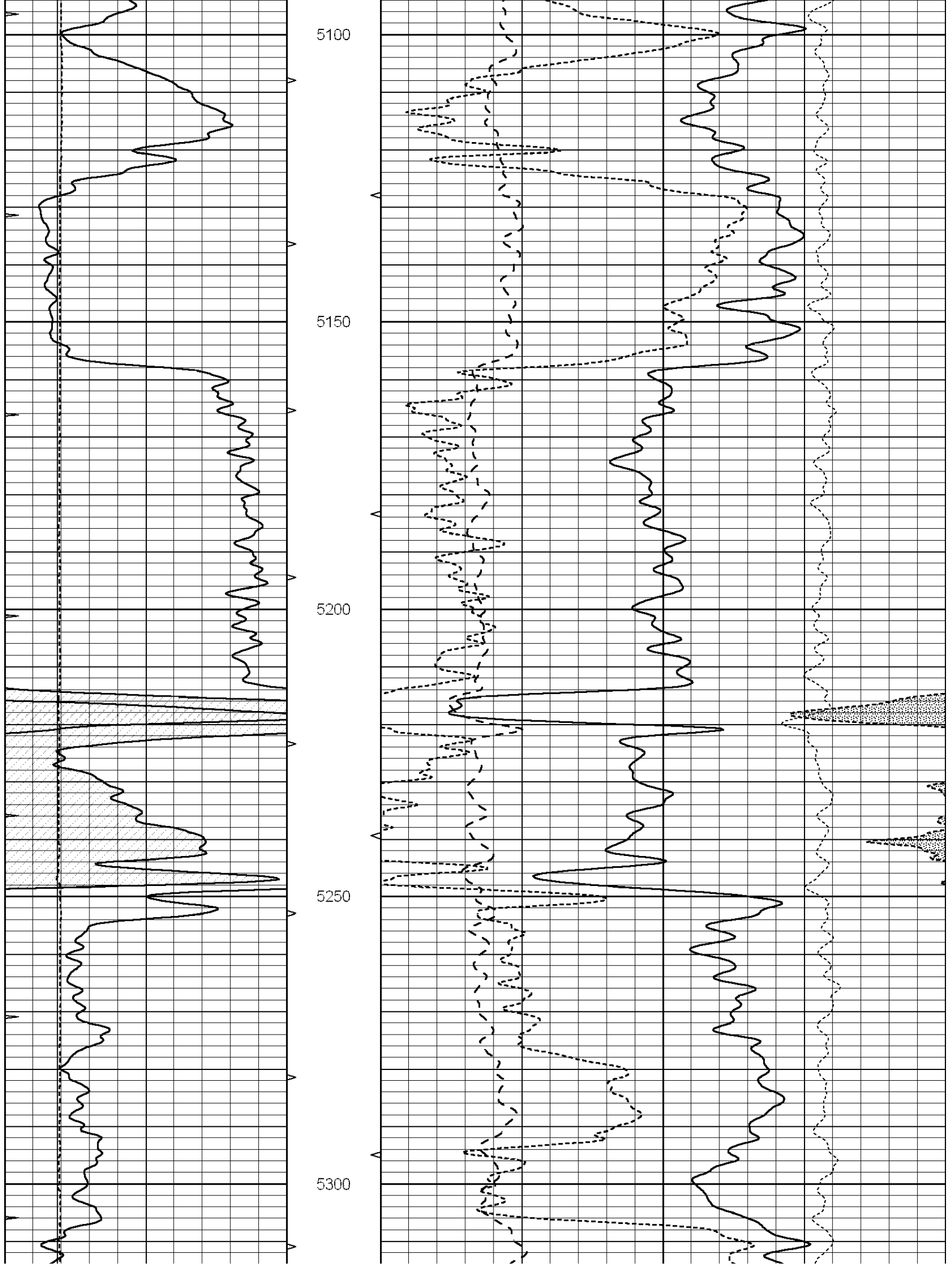


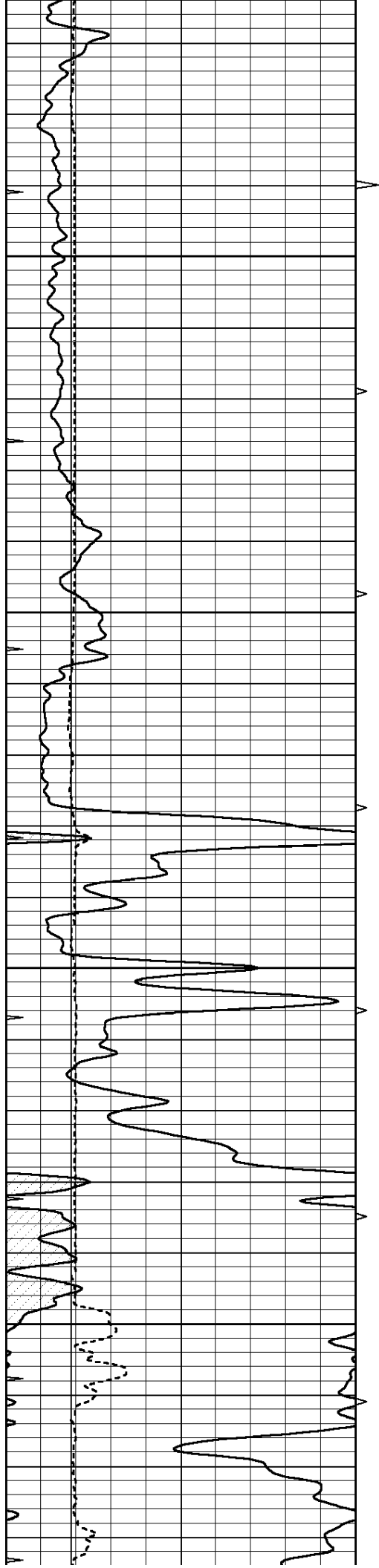










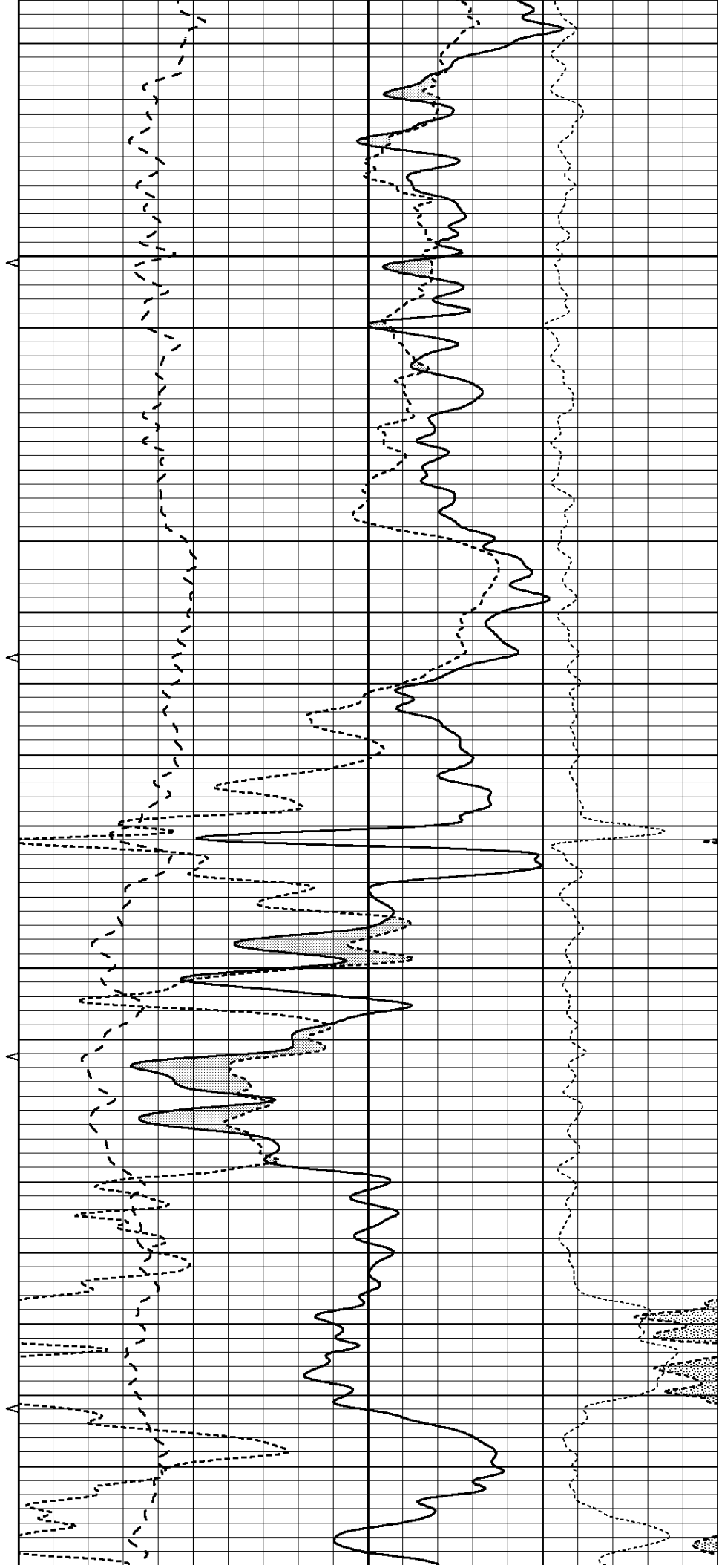


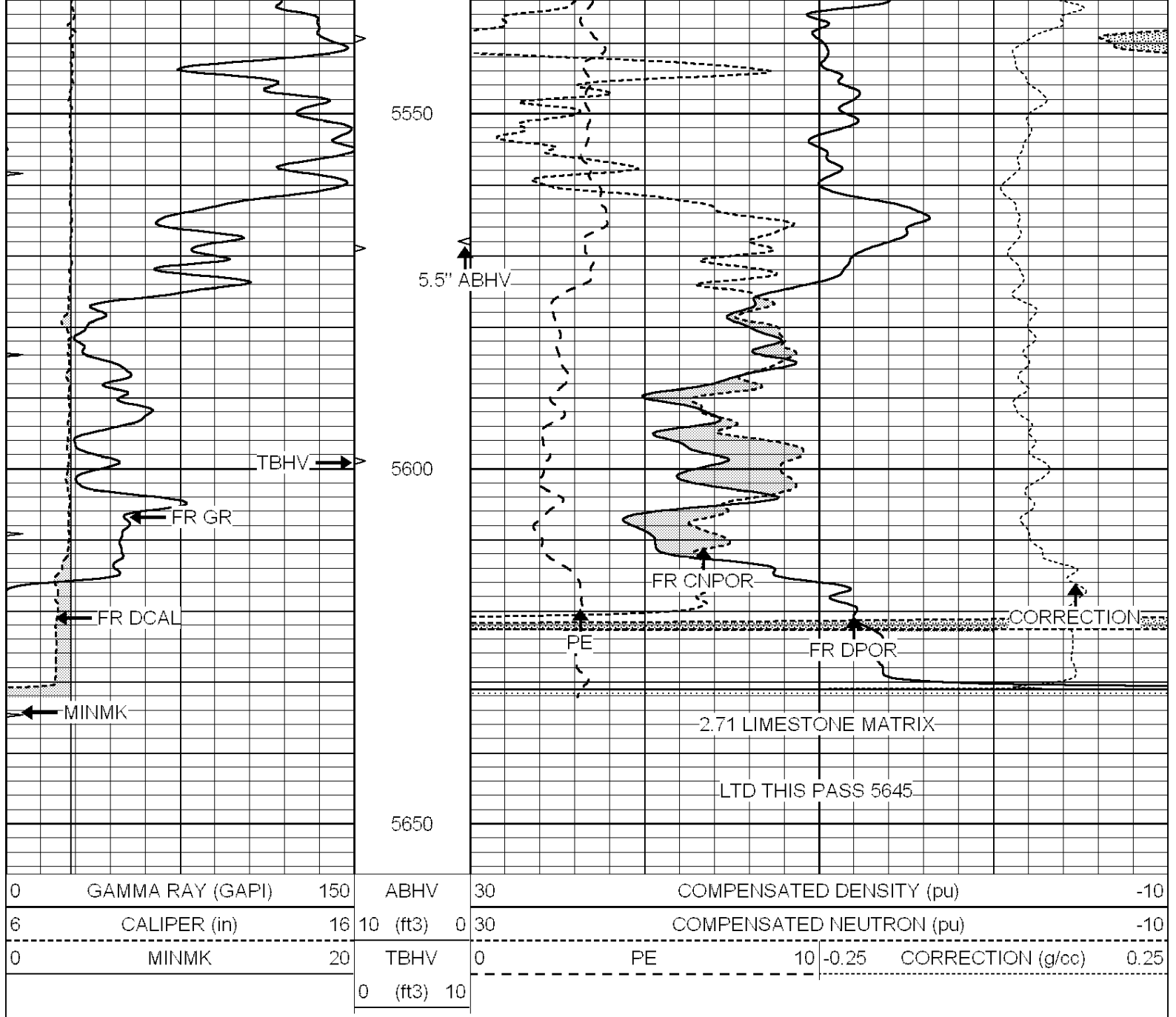
5350

5400

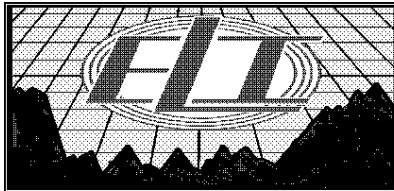
5450

5500





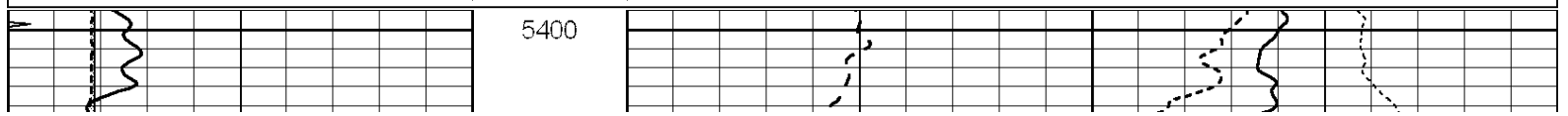
0	GAMMA RAY (GAPI)	150	ABHV	30	COMPENSATED DENSITY (pu)	-10
6	CALIPER (in)	16	10 (ft3)	0 30	COMPENSATED NEUTRON (pu)	-10
0	MINMK	20	TBHV	0	PE	10 -0.25
			0 (ft3)	10		CORRECTION (g/cc) 0.25

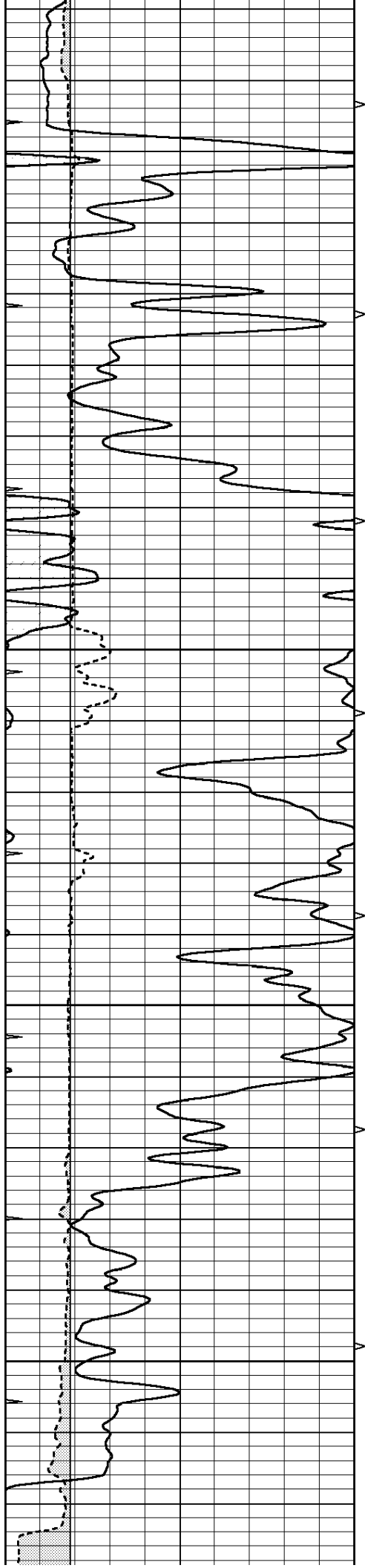


REPEAT SECTION

Database File: 1594pe.db
 Dataset Pathname: pass2.4
 Presentation Format: ldt_neu
 Dataset Creation: Sun Aug 06 08:25:11 2017 by Calc SOC 120430
 Charted by: Depth in Feet scaled 1:240

0	GAMMA RAY (GAPI)	150	ABHV	30	COMPENSATED DENSITY (pu)	-10
6	CALIPER (in)	16	10 (ft3)	0 30	COMPENSATED NEUTRON (pu)	-10
0	MINMK	20	TBHV	0	PE	10 -0.25
			0 (ft3)	10		CORRECTION (g/cc) 0.25



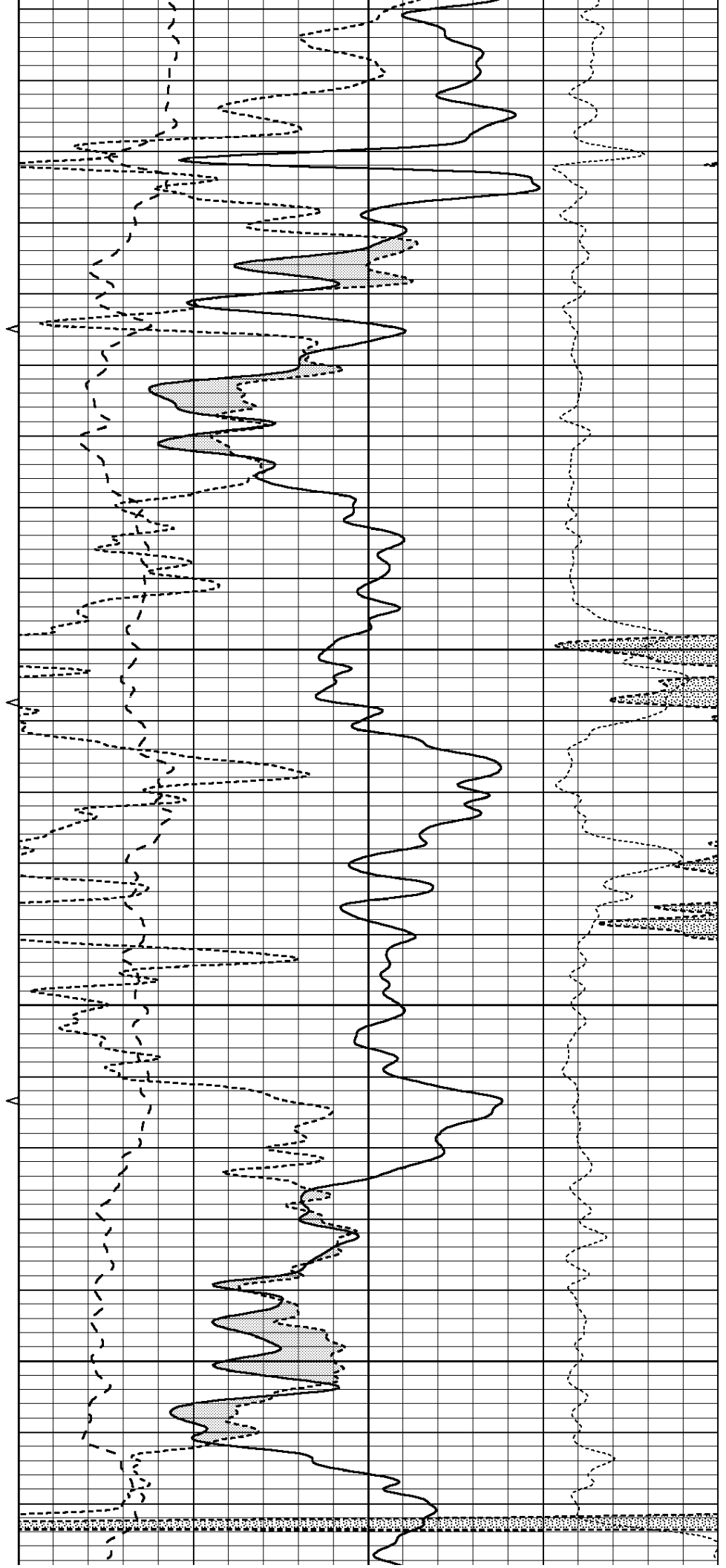


5450

5500

5550

5600



	Background	Magnesium	Aluminum	Sandstone	
Window 1	1751.3	11741.0	3857.3	12907.8	cps
Window 2	1589.4	9536.2	3267.6	10282.0	cps
Window 3	1413.4	6466.1	2463.2	6828.7	cps
Window 4	399.5	407.1	405.1	406.5	cps
Long Space	0.0	7946.7	1678.1	8692.6	cps
Short Space	2.2	3366.2	2134.1	3410.2	cps
Rho		1.7100	2.5900	1.3800	g/cc
Pe		0.0000	2.5700	1.5500	
Rib Angle	: 43.7	Rib Slope	: 0.954	Density/Spine Ratio	: 0.543
Spine Angle	: 73.7	Spine Slope	: 3.412	Spine Intercept	: -18.7

Before Survey Verification

Performed Wed Dec 31 18:00:00 1969

Window 1	0.0	0.0	0.0	0.0	cps
Window 2	0.0	0.0	0.0	0.0	cps
Window 3	0.0	0.0	0.0	0.0	cps
Window 4	0.0	0.0	0.0	0.0	cps
Long Space	0.0	0.0	0.0	0.0	cps
Short Space	0.0	0.0	0.0	0.0	cps
Measured Rho		0.0000	0.0000	0.0000	g/cc
Measured Correction		0.0000	0.0000	0.0000	g/cc
Measured Pe			0.0000	0.0000	

After Survey Verification

Performed Wed Dec 31 18:00:00 1969

Window 1	0.0	0.0	0.0	0.0	cps
Window 2	0.0	0.0	0.0	0.0	cps
Window 3	0.0	0.0	0.0	0.0	cps
Window 4	0.0	0.0	0.0	0.0	cps
Long Space	0.0	0.0	0.0	0.0	cps
Short Space	0.0	0.0	0.0	0.0	cps
Measured Rho		0.0000	0.0000	0.0000	g/cc
Measured Correction		0.0000	0.0000	0.0000	g/cc
Measured Pe			0.0000	0.0000	

Compensated Neutron Calibration Report

Serial Number: 070808
Tool Model: Probe

PRE-SURVEY VERIFICATION

Detector	Readings	Measured	Target
Short Space	cps		
Long Space	cps	pu	pu

POST-SURVEY VERIFICATION

Detector	Readings	Measured	Target
Short Space	cps		
Long Space	cps	pu	pu

Gamma Ray Calibration Report

Serial Number: 070558
Tool Model: OPEN_GR
Performed: Wed May 31 00:09:32 2017

Calibrator Value:	1.0	GAPI
Background Reading:	0.0	cps
Calibrator Reading:	1.0	cps
Sensitivity:	0.2800	GAPI/cps