



MICRO LOG

Company LOTUS OPERATING COMPANY, LLC.
 Well #1 CHARLIE
 Field HARDTNER / STRANATHAN
 County BARBER
 State KANSAS

Company LOTUS OPERATING COMPANY, LLC.
 Well #1 CHARLIE
 Field HARDTNER / STRANATHAN
 County BARBER State KANSAS

Location: API # : 15-007-24321-0000
 S/2 - SW - SW
 SEC 11 TWP 35S RGE 13W
 Permanent Datum GROUND LEVEL Elevation 1472
 Log Measured From KELLY BUSHING 8' A.G.L.
 Drilling Measured From KELLY BUSHING
 Other Services
 CDL/CNL/PE
 DIL/SONIC
 Elevation
 K.B. 1480
 D.F. 1478
 G.L. 1472

Date	8/6/17		
Run Number	TWO		
Depth Driller	5650		
Depth Logger	5648		
Bottom Logged Interval	5632		
Top Log Interval	3600		
Casing Driller	8 5/8"@265'		
Casing Logger	265		
Bit Size	7 7/8"		
Type Fluid in Hole	CHEMICAL MUD	CHLORIDES 3,000 PPM	
Density / Viscosity	9.147		
pH / Fluid Loss	11.0/10.0		
Source of Sample	FLOWLINE		
Rim @ Meas. Temp	.600@80F		
Rmf @ Meas. Temp	.450@80F		
Rmc @ Meas. Temp	.720@80F		
Source of Rmf / Rmc	MEASUREMENT		
Rim @ BHT	.366@131F		
Time Circulation Stopped	3 HOURS		
Time Logger on Bottom	9:45 A.M.		
Maximum Recorded Temperature	131F		
Equipment Number	922339		
Location	HAYS, KANSAS		
Recorded By	JEFF LUEBBERS		
Witnessed By	TIM HELLMAN		

<<< Fold Here >>>

All interpretations are opinions based on inferences from electrical or other measurements and we cannot and do not guarantee the accuracy or correctness of any interpretation, and we shall not, except in the case of gross or willful negligence on our part, be liable or responsible for any loss, costs, damages, or expenses incurred or sustained by anyone resulting from any interpretation made by any of our officers, agents or employees. These interpretations are also subject to our general terms and conditions set out in our current Price Schedule.

Comments

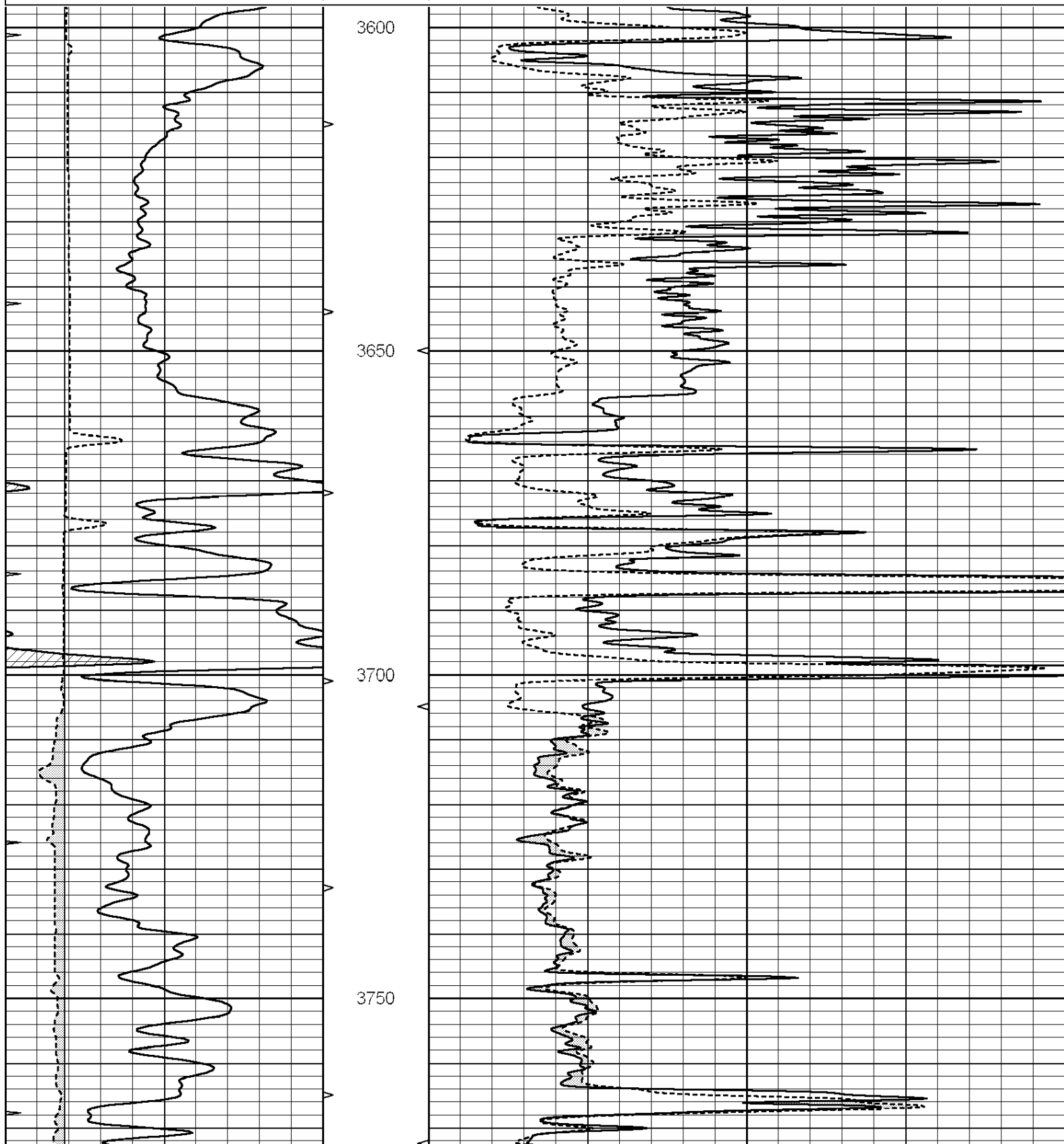
THANK YOU FOR USING ELI WIRELINE HAYS, KANSAS (785) 628-6395
 DIRECTIONS
 HARDTNER, KANSAS, 3W. PAST "GYP HILL RD", S. INTO

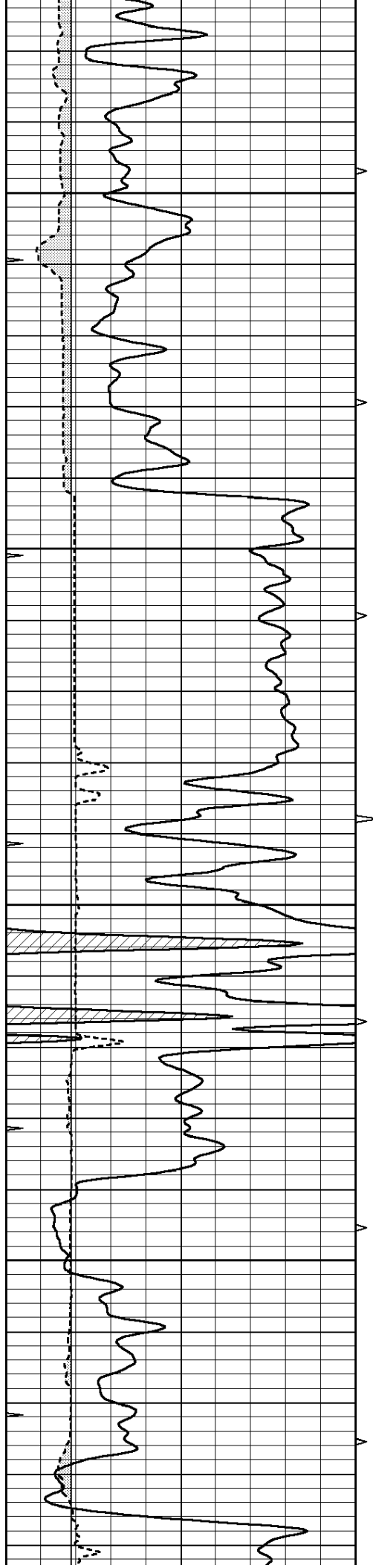


MAIN SECTION

Database File: 1594pe.db
 Dataset Pathname: pass6.1
 Presentation Format: micro
 Dataset Creation: Sun Aug 06 10:28:14 2017 by Calc SOC 120430
 Charted by: Depth in Feet scaled 1:240

0	GAMMA RAY (GAPI)	150	ABHV	0	MEL1.5 (Ohm-m)	40
6	CALIPER (in)	16	10 (ft3)	0 0	MEL 20 (Ohm-m)	40
0	MINMK	20	TBHV			
			0 (ft3)	10		



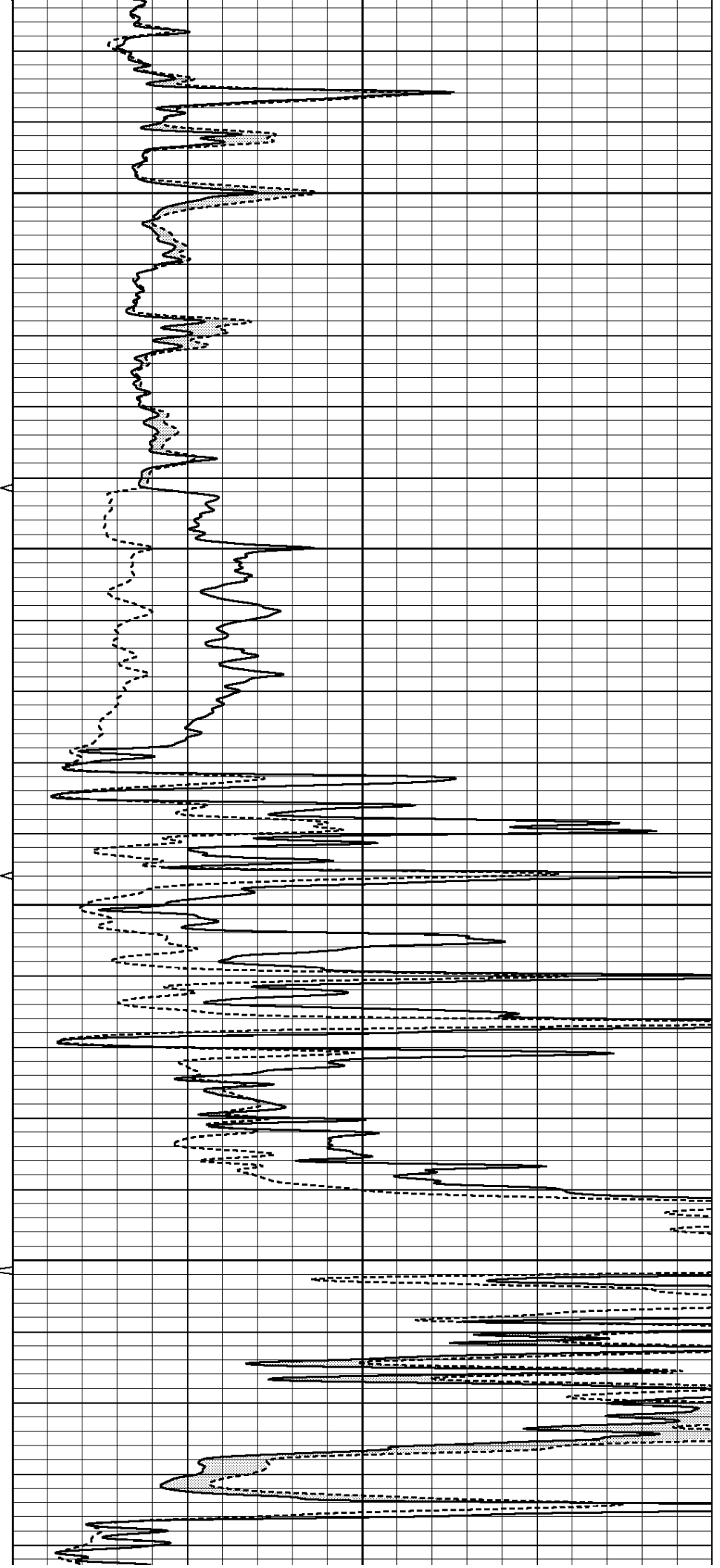


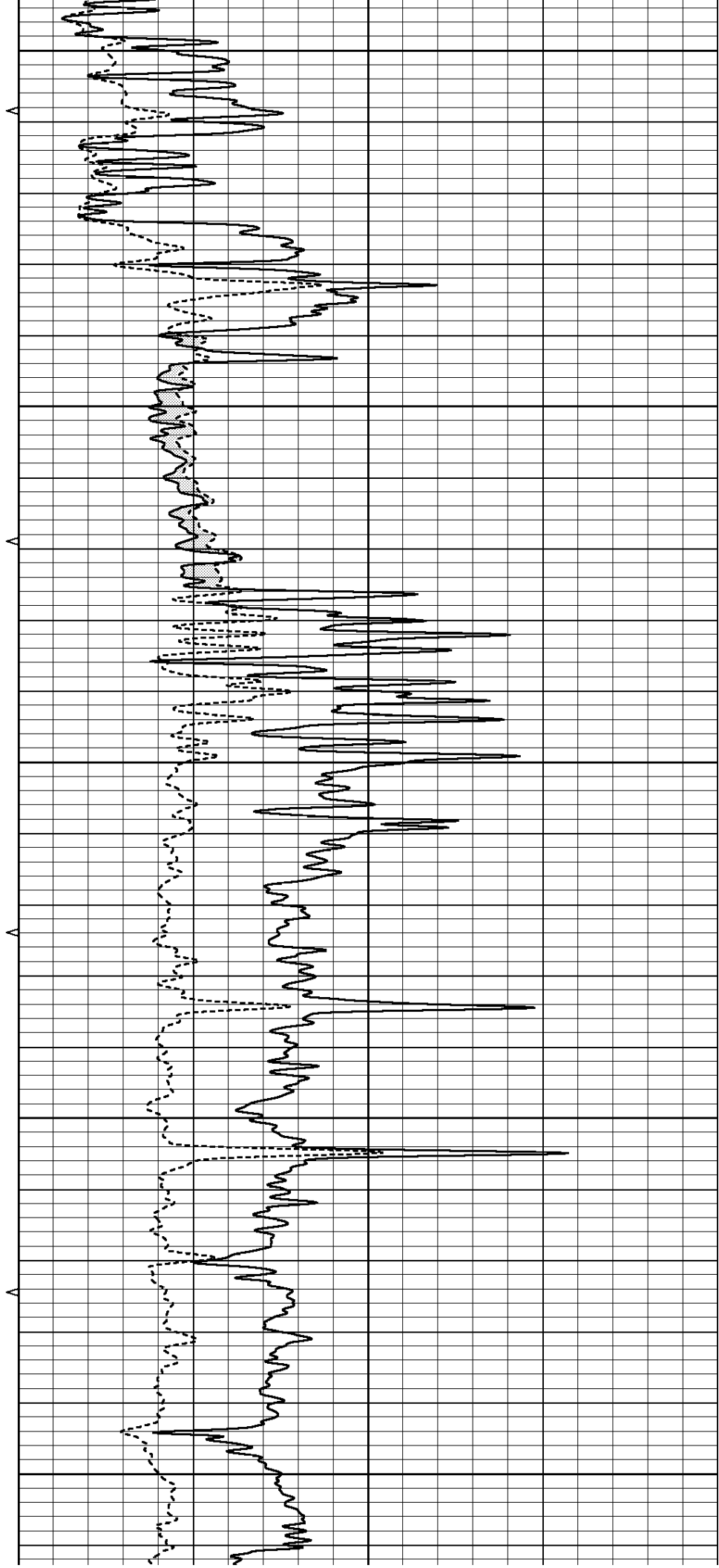
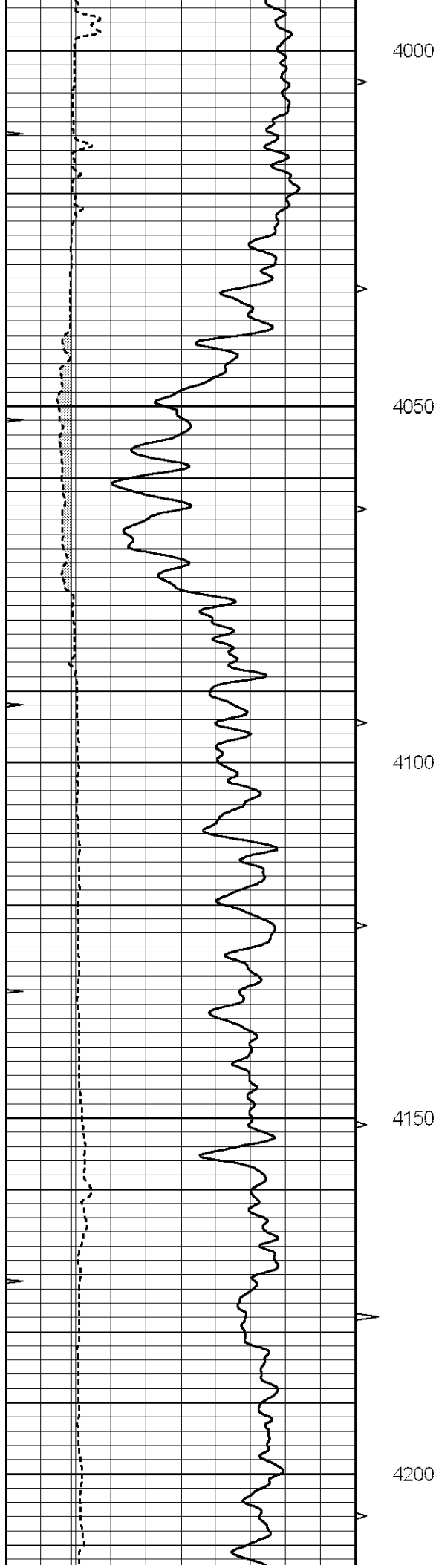
3800

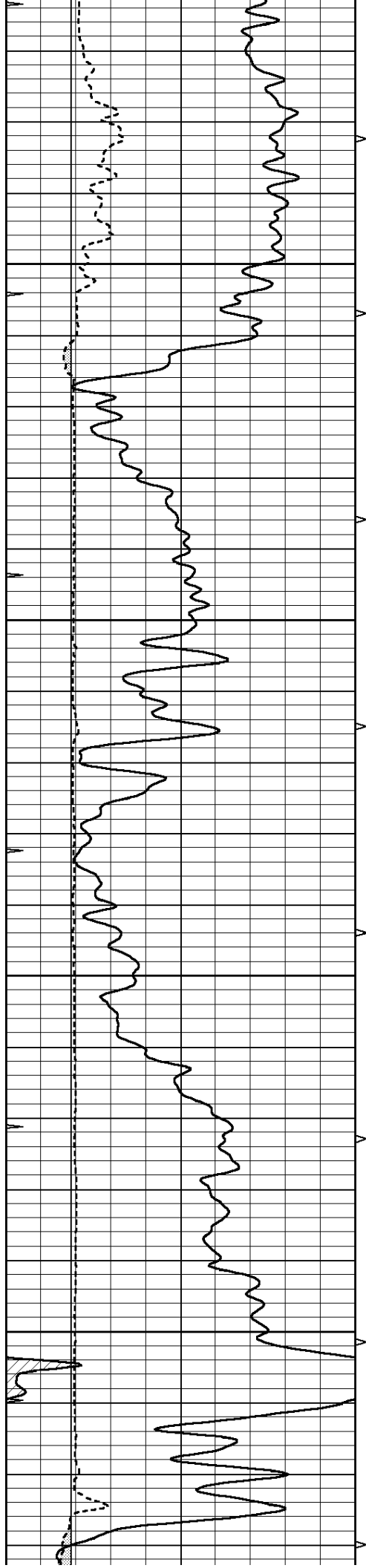
3850

3900

3950





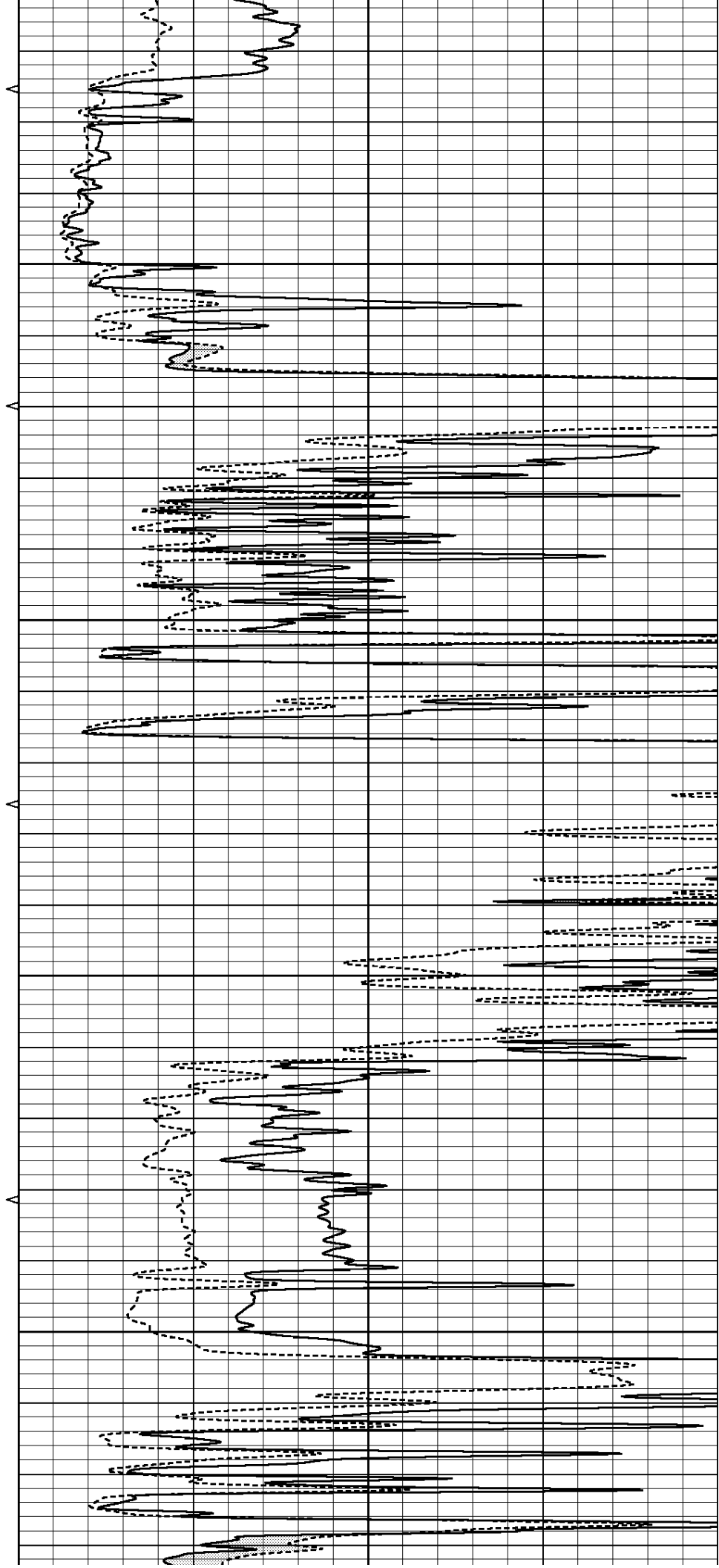


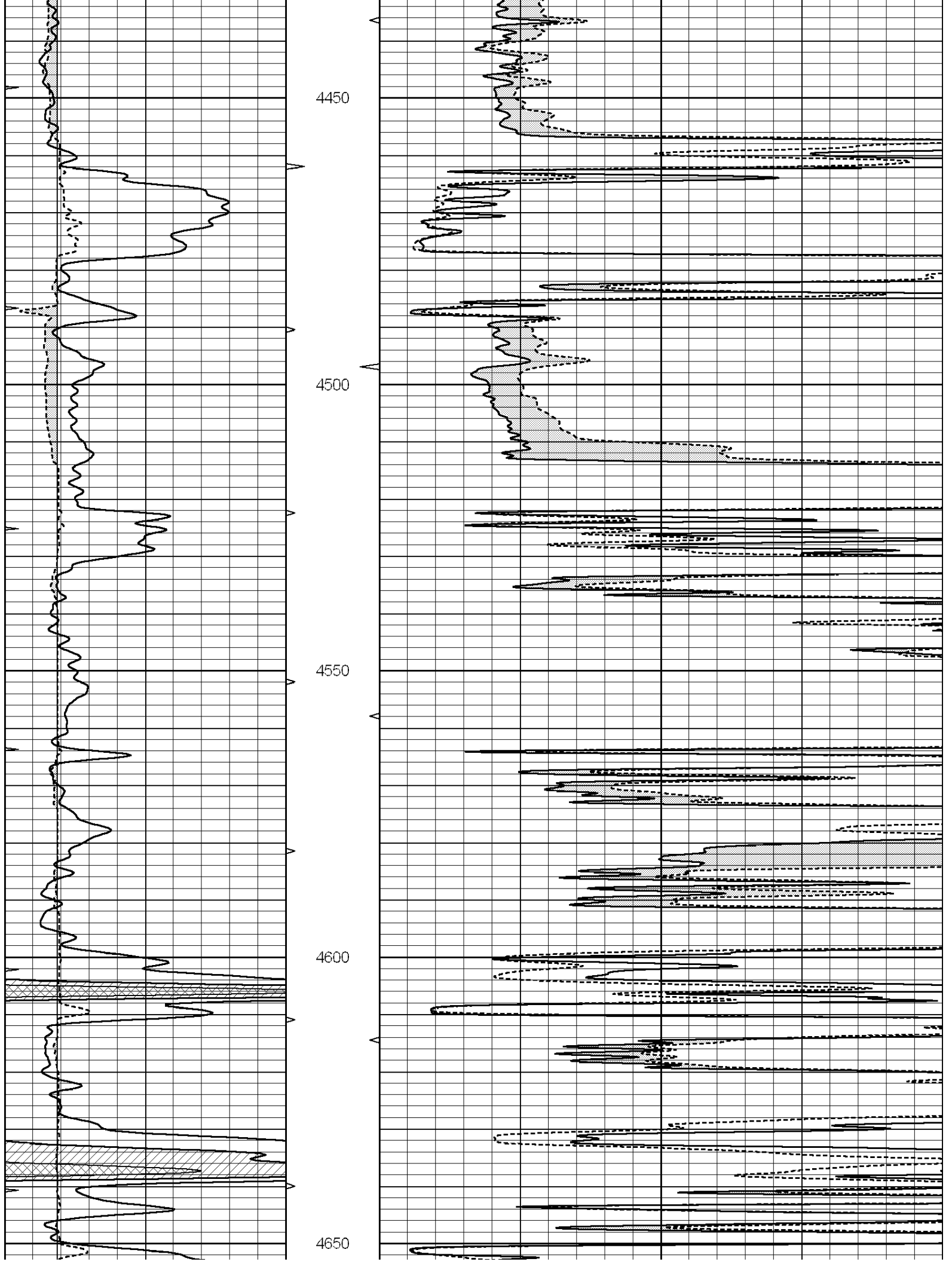
4250

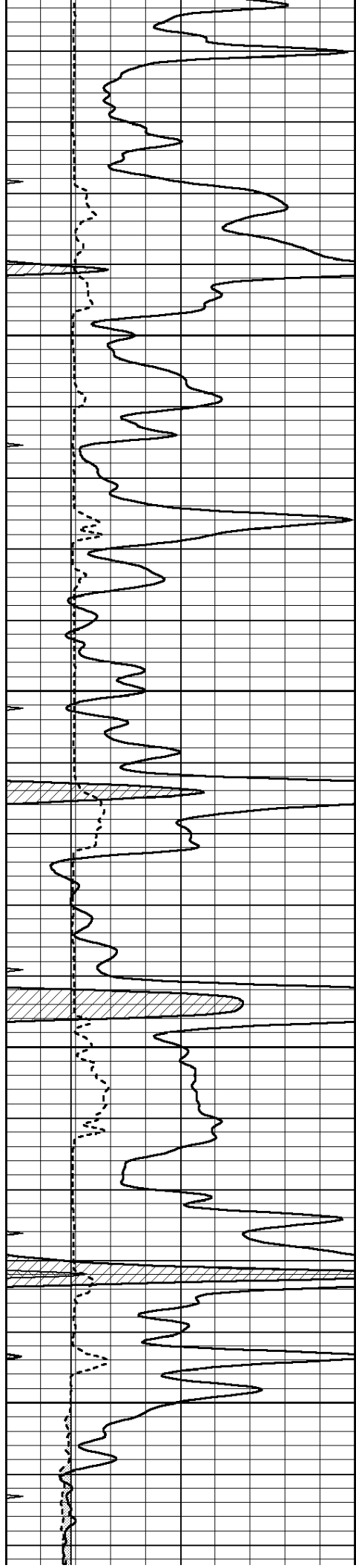
4300

4350

4400





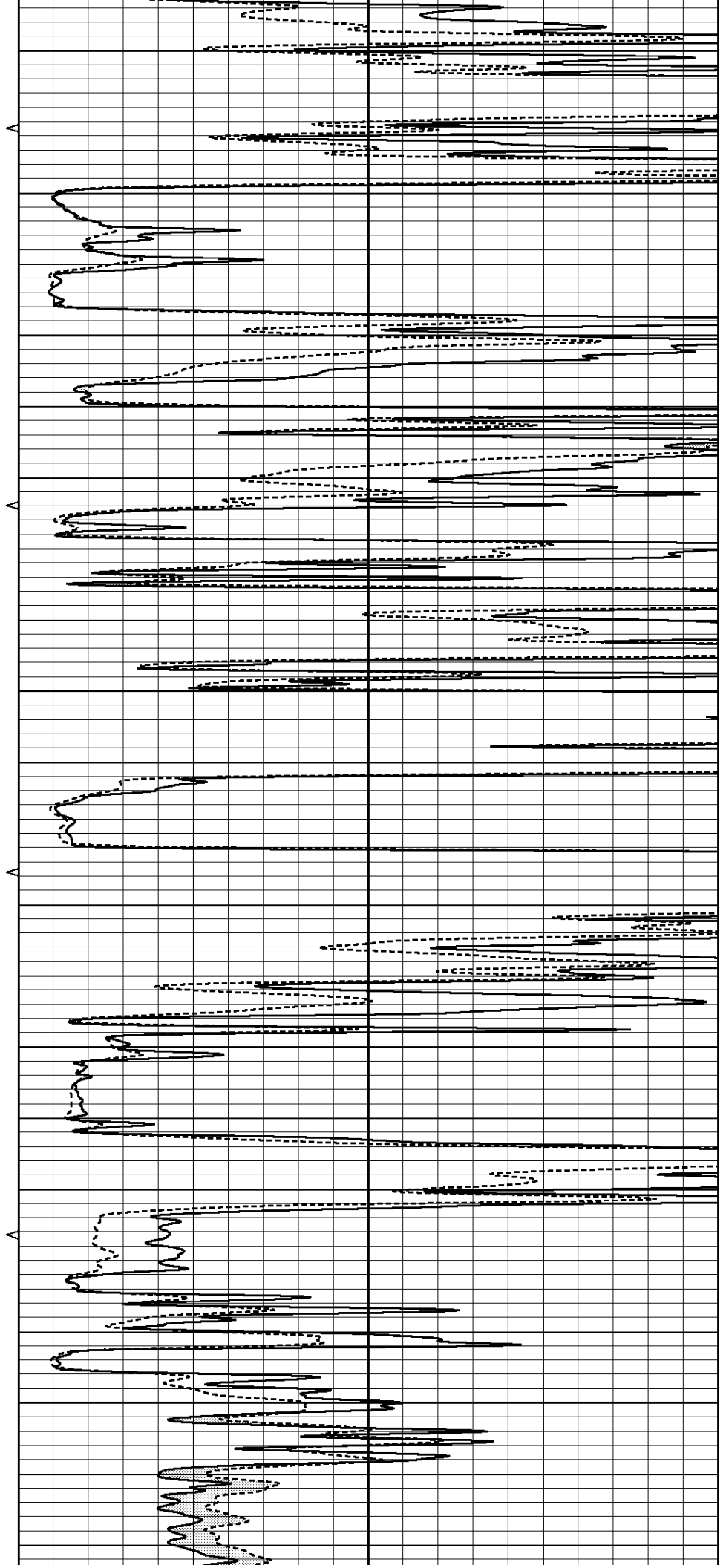


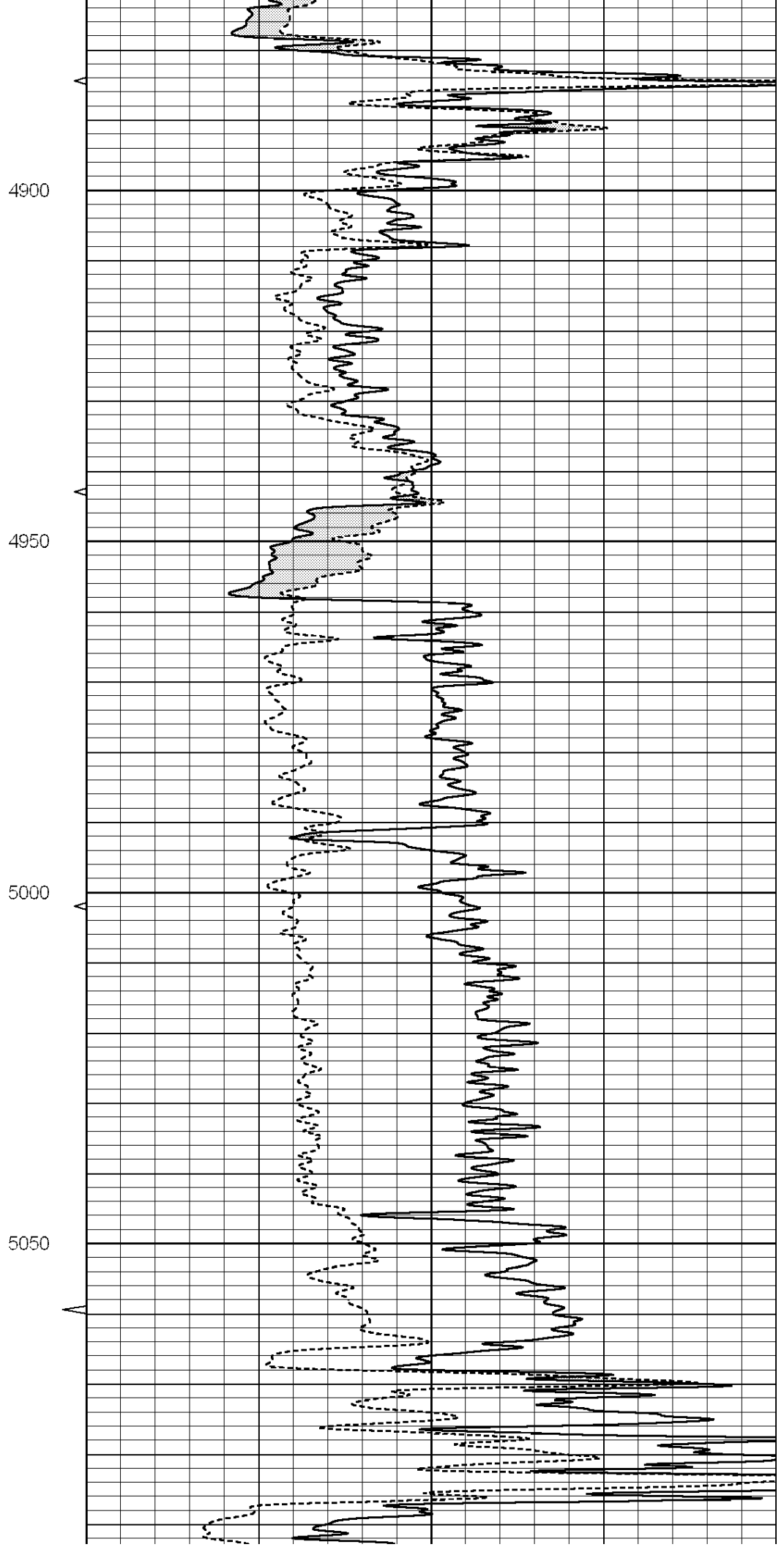
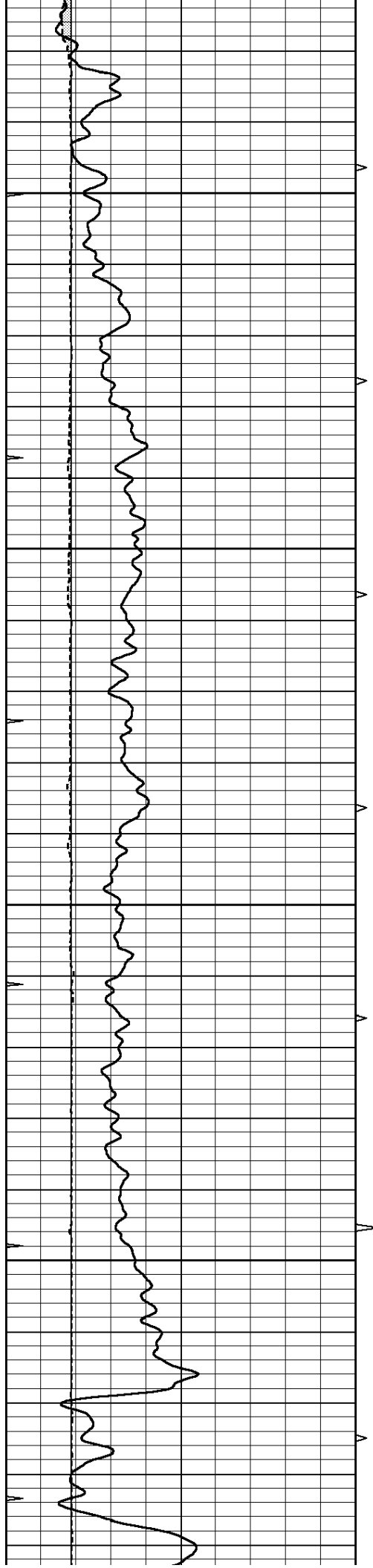
4700

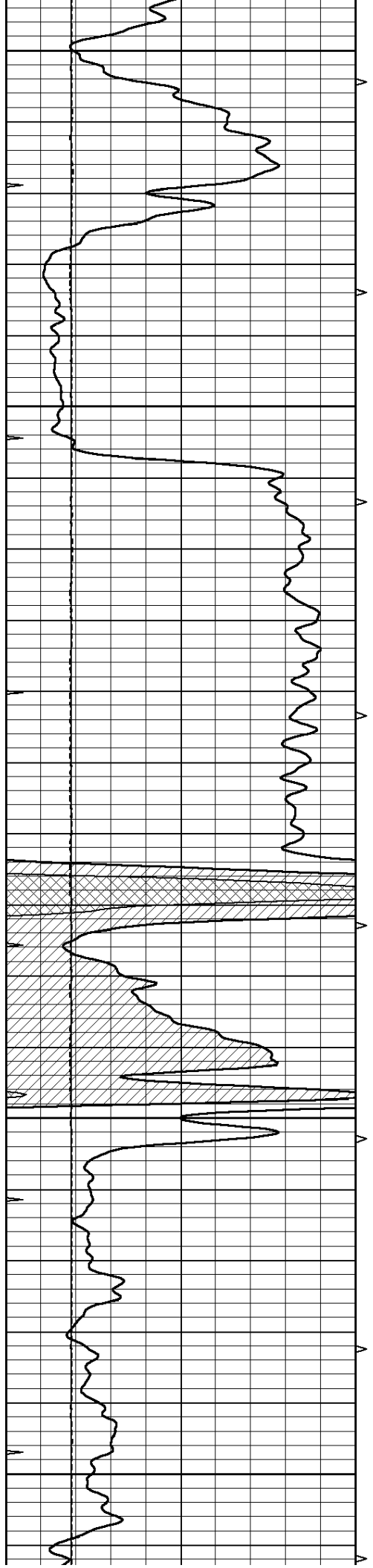
4750

4800

4850







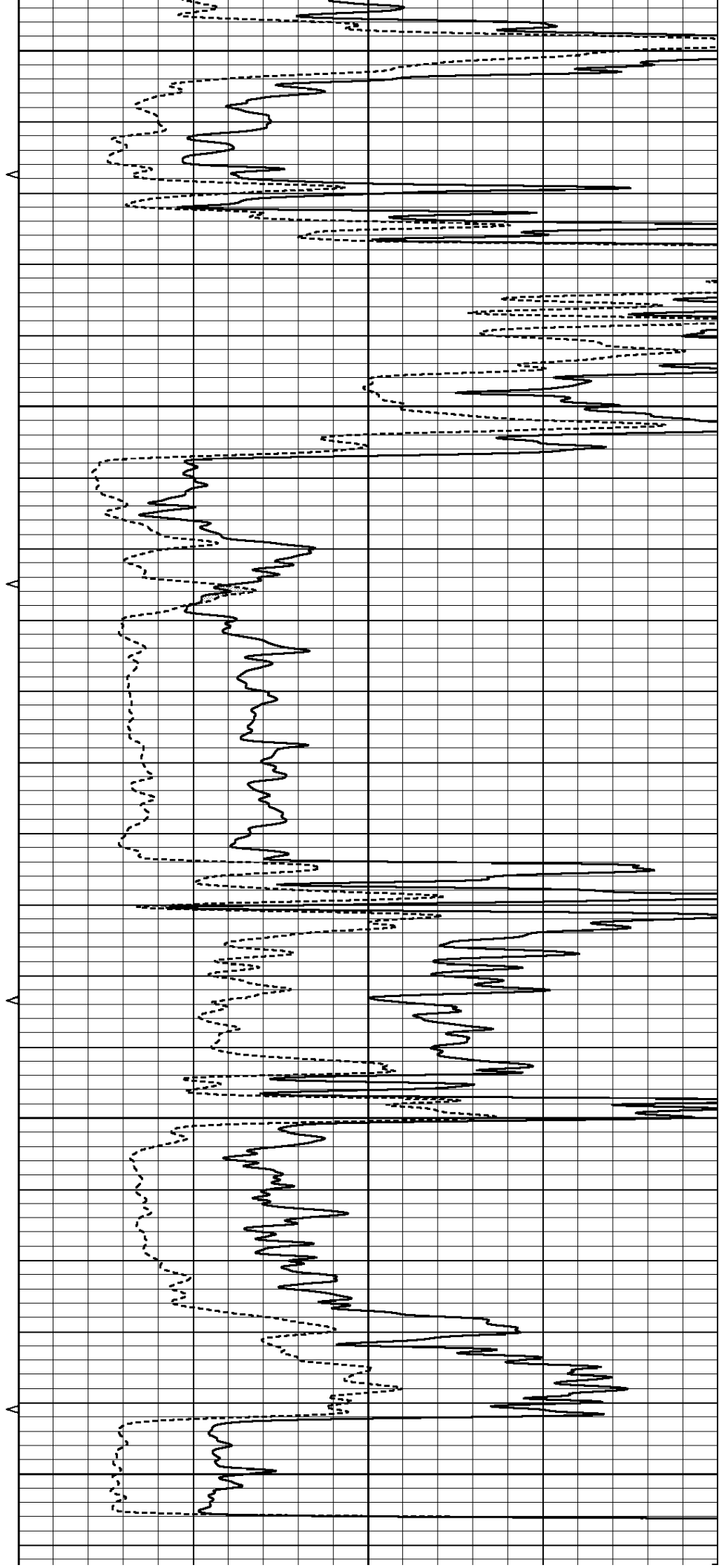
5100

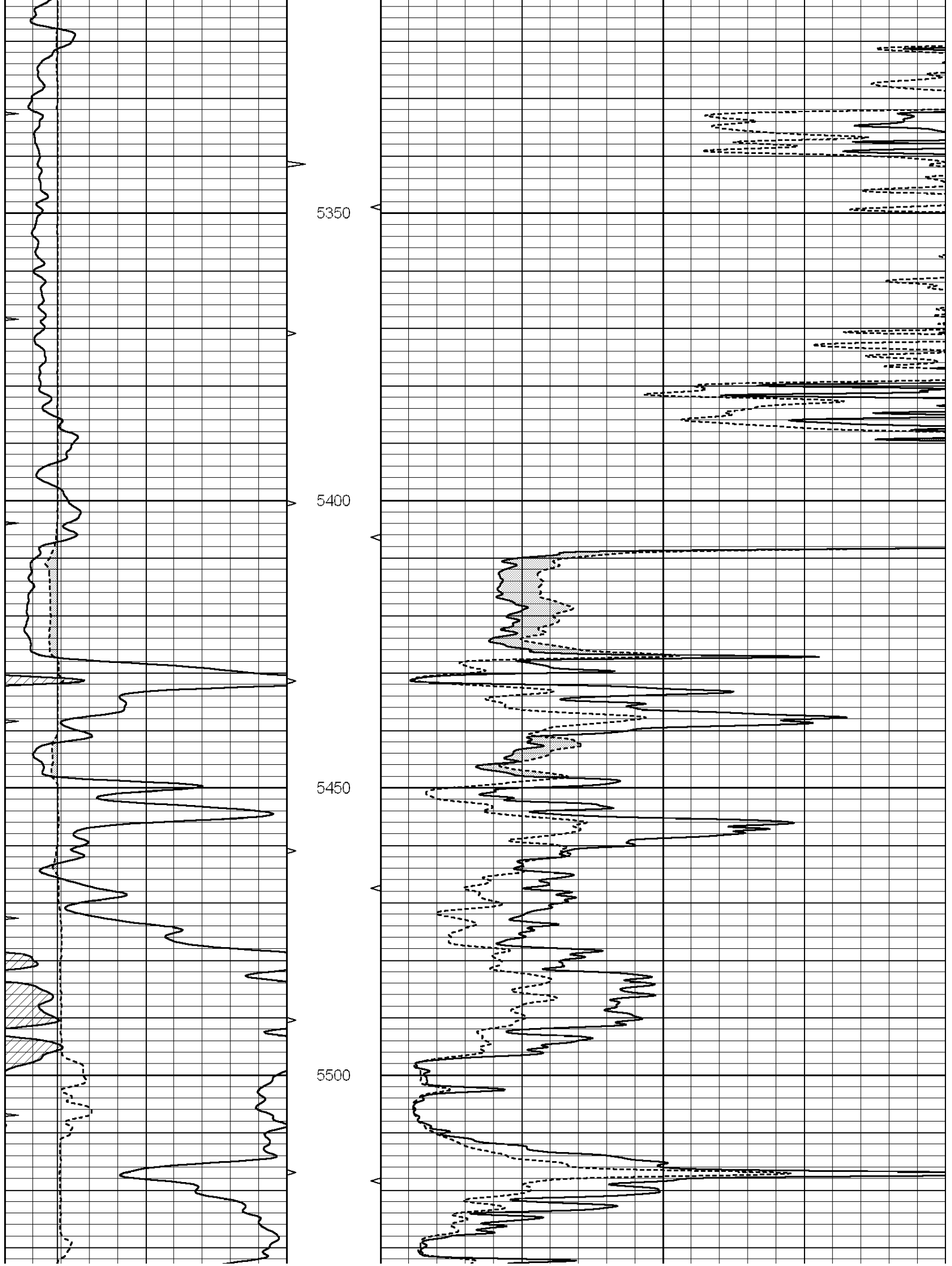
5150

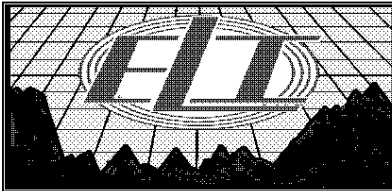
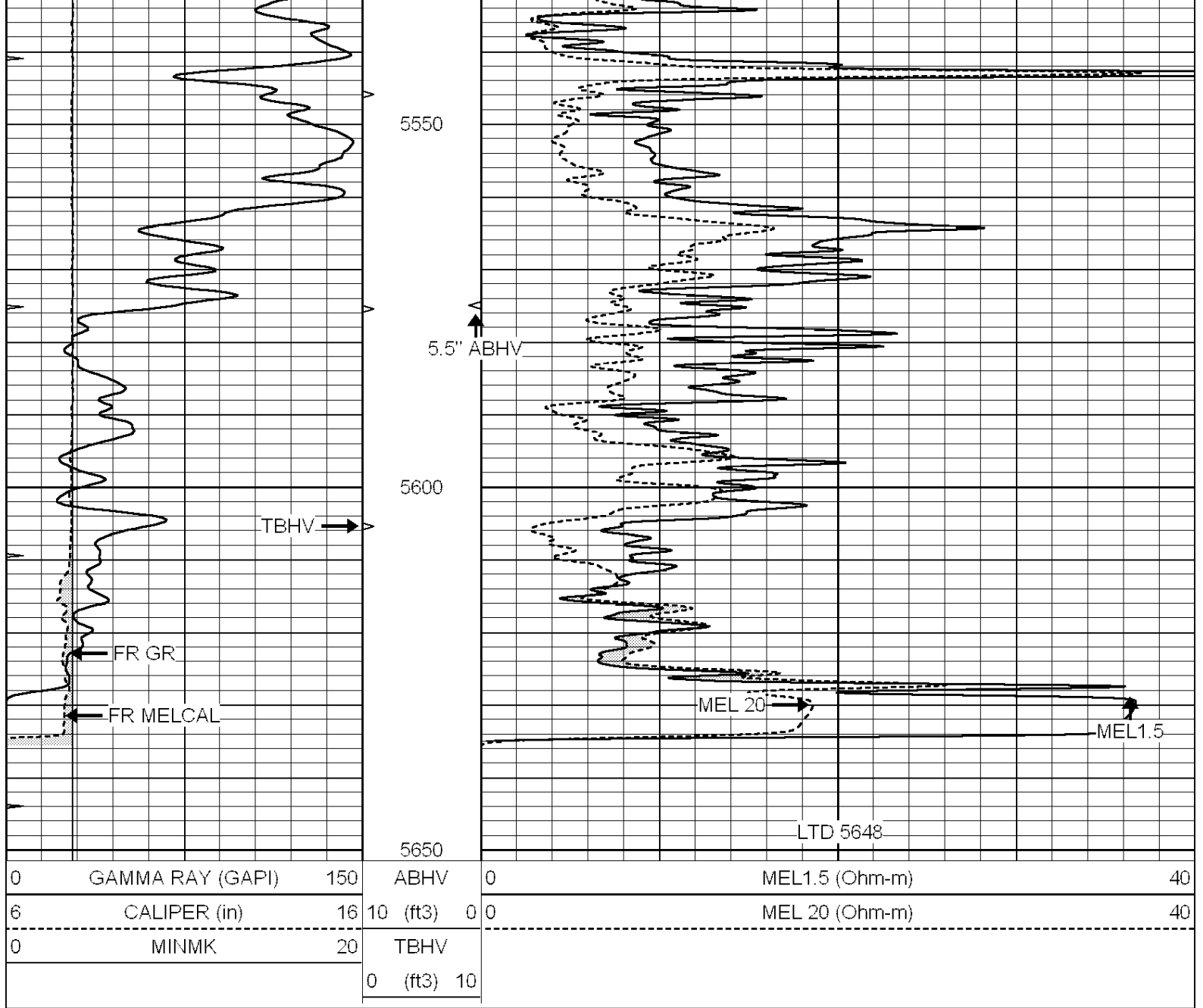
5200

5250

5300



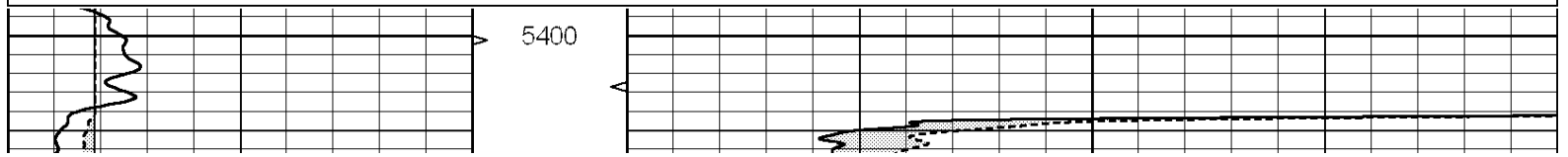


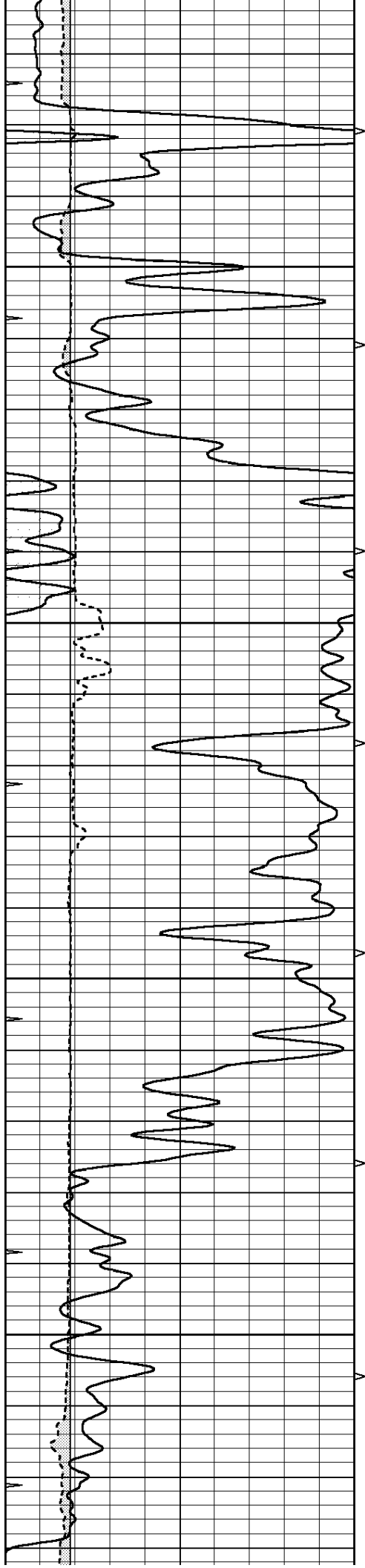


REPEAT SECTION

Database File: 1594pe.db
 Dataset Pathname: pass5.1
 Presentation Format: micro
 Dataset Creation: Sun Aug 06 09:28:54 2017 by Calc SOC 120430
 Charted by: Depth in Feet scaled 1:240

0	GAMMA RAY (GAPI)	150	ABHV	0	MEL1.5 (Ohm-m)	40
6	CALIPER (in)	16	10 (ft3)	0 0	MEL 20 (Ohm-m)	40
0	MINMK	20	TBHV			
			0 (ft3)	10		



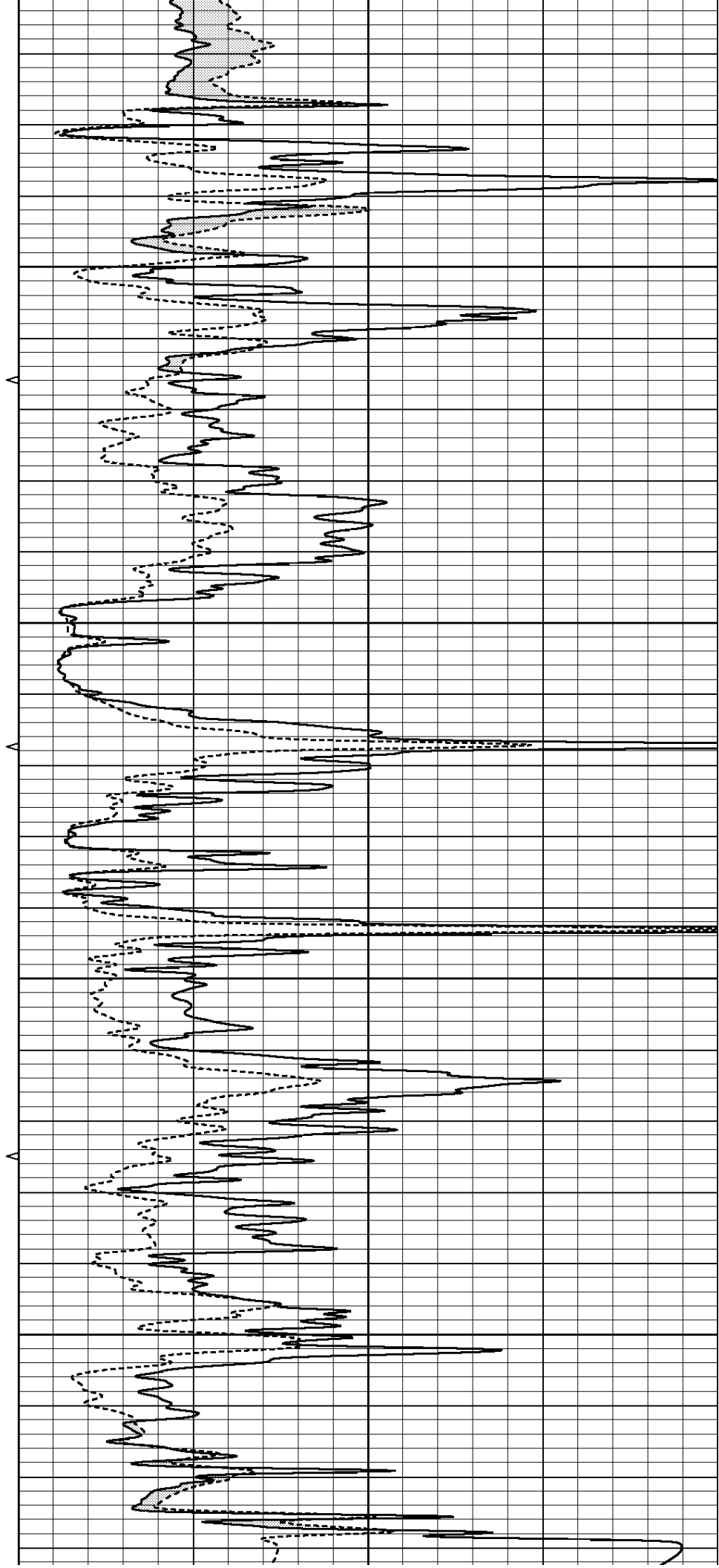


5450

5500

5550

5600



			5650					
0	GAMMA RAY (GAPI)	150	ABHV	0	MEL1.5 (Ohm-m)	40		
6	CALIPER (in)	16	10 (ft3)	0	MEL 20 (Ohm-m)	40		
0	MINMK	20	TBHV					
			0 (ft3)	10				

Calibration Report

Database File: 1594pe.db
Dataset Pathname: pass6.1
Dataset Creation: Sun Aug 06 10:28:14 2017 by Calc SOC 120430

MICRO Calibration Report

Serial Number: 070911
Tool Model: ProbeN
Performed: Fri Jul 21 05:26:18 2017

Caliper Calibration: Gain=4.758 Offset=0.387

	Low Cal	High Cal
References	8.000	16.000
Readings	1.600	3.281

1.5" Calibration: Gain=42.000 Offset=0.000

	Low Cal	High Cal
References	0.000	20.000
Readings	0.001	1.240

2" Calibration: Gain=46.000 Offset=0.000

	Low Cal	High Cal
References	0.000	20.000
Readings	0.001	1.076

Gamma Ray Calibration Report

Serial Number: 110959
Tool Model: OPEN_GR
Performed: Fri Jul 28 15:54:41 2017

Calibrator Value: 1.0 GAPI

Background Reading: 0.0 cps
Calibrator Reading: 1.0 cps

Sensitivity: 0.2000 GAPI/cps