



SONIC LOG

Company LOTUS OPERATING COMPANY, LLC.  
Well #1 CHARLIE  
Field HARDTNER / STRANATHAN  
County BARBER  
State KANSAS

Company LOTUS OPERATING COMPANY, LLC.  
Well #1 CHARLIE  
Field HARDTNER / STRANATHAN  
County BARBER State KANSAS

Location: API # : 15-007-24321-0000  
S/2 - SW - SW  
Permanent Datum GROUND LEVEL Elevation 1472  
Log Measured From KELLY BUSHING 8' A.G.L.  
Drilling Measured From KELLY BUSHING  
SEC 11 TWP 35S RGE 13W  
Other Services CDL/CNL/PE DIL/MEL  
Elevation K.B. 1480 D.F. 1478 G.L. 1472

Date	8/6/17		
Run Number	TWO		
Depth Driller	5650		
Depth Logger	5648		
Bottom Logged Interval	5640		
Top Log Interval	3600		
Casing Driller	8 5/8"@265'		
Casing Logger	265		
Bit Size	7 7/8"		
Type Fluid in Hole	CHEMICAL MUD	CHLORIDES 3,000 PPM	
Density / Viscosity	9.147		
pH / Fluid Loss	11.0/10.0		
Source of Sample	FLOWLINE		
Rim @ Meas. Temp	.600@80F		
Rmf @ Meas. Temp	.450@80F		
Rmc @ Meas. Temp	.720@80F		
Source of Rmf / Rmc	MEASUREMENT		
Rim @ BHT	.366@131F		
Time Circulation Stopped	3 HOURS		
Time Logger on Bottom	9:45 A.M.		
Maximum Recorded Temperature	131F		
Equipment Number	922339		
Location	HAYS, KANSAS		
Recorded By	JEFF LUEBBERS		
Witnessed By	TIM HELLMAN		

<<< Fold Here >>>

All interpretations are opinions based on inferences from electrical or other measurements and we cannot and do not guarantee the accuracy or correctness of any interpretation, and we shall not, except in the case of gross or willful negligence on our part, be liable or responsible for any loss, costs, damages, or expenses incurred or sustained by anyone resulting from any interpretation made by any of our officers, agents or employees. These interpretations are also subject to our general terms and conditions set out in our current Price Schedule.

Comments

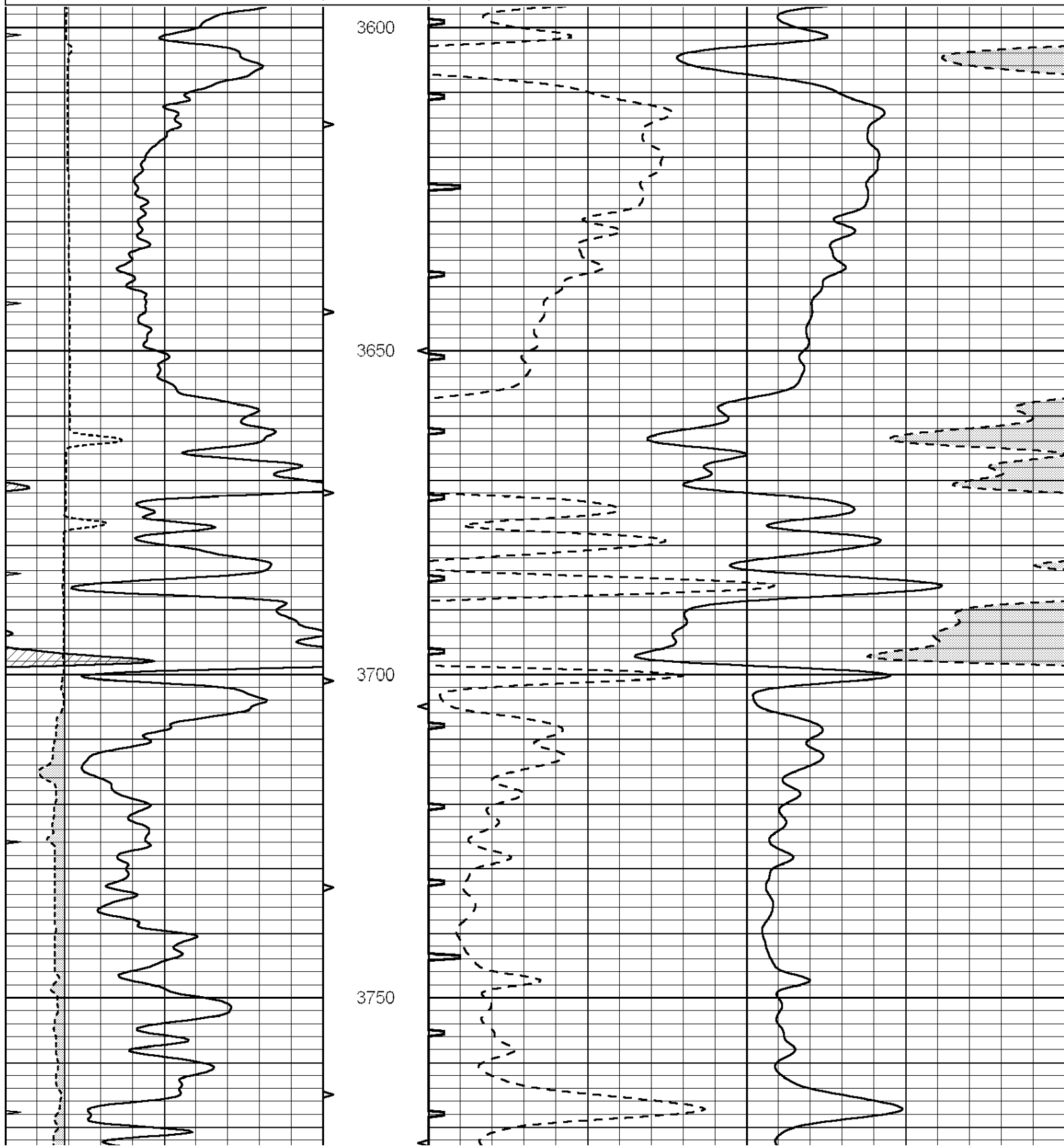
THANK YOU FOR USING ELI WIRELINE HAYS, KANSAS (785) 628-6395  
DIRECTIONS  
HARDTNER, KANSAS, 3W. PAST "GYP HILL RD", S. INTO

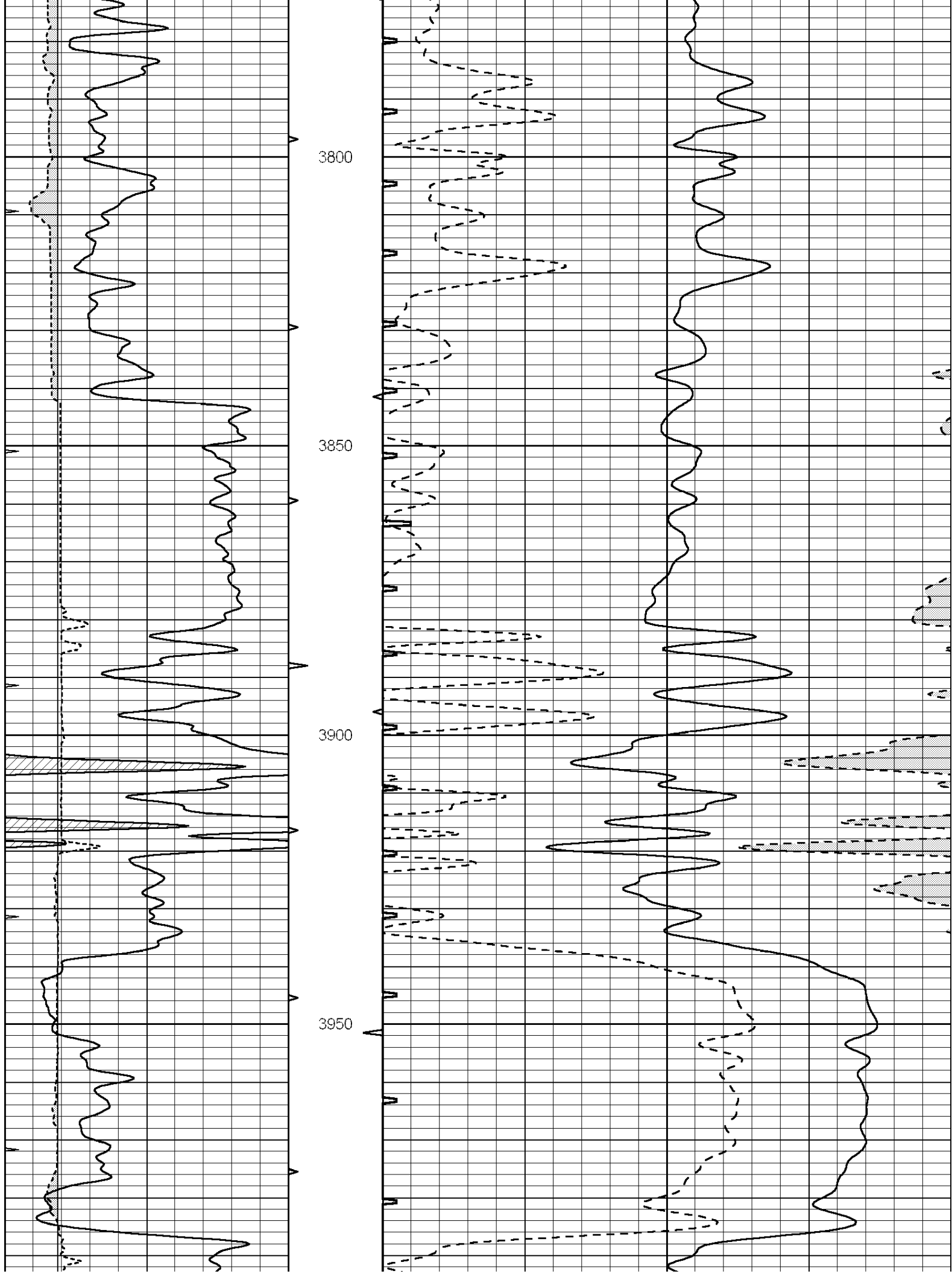


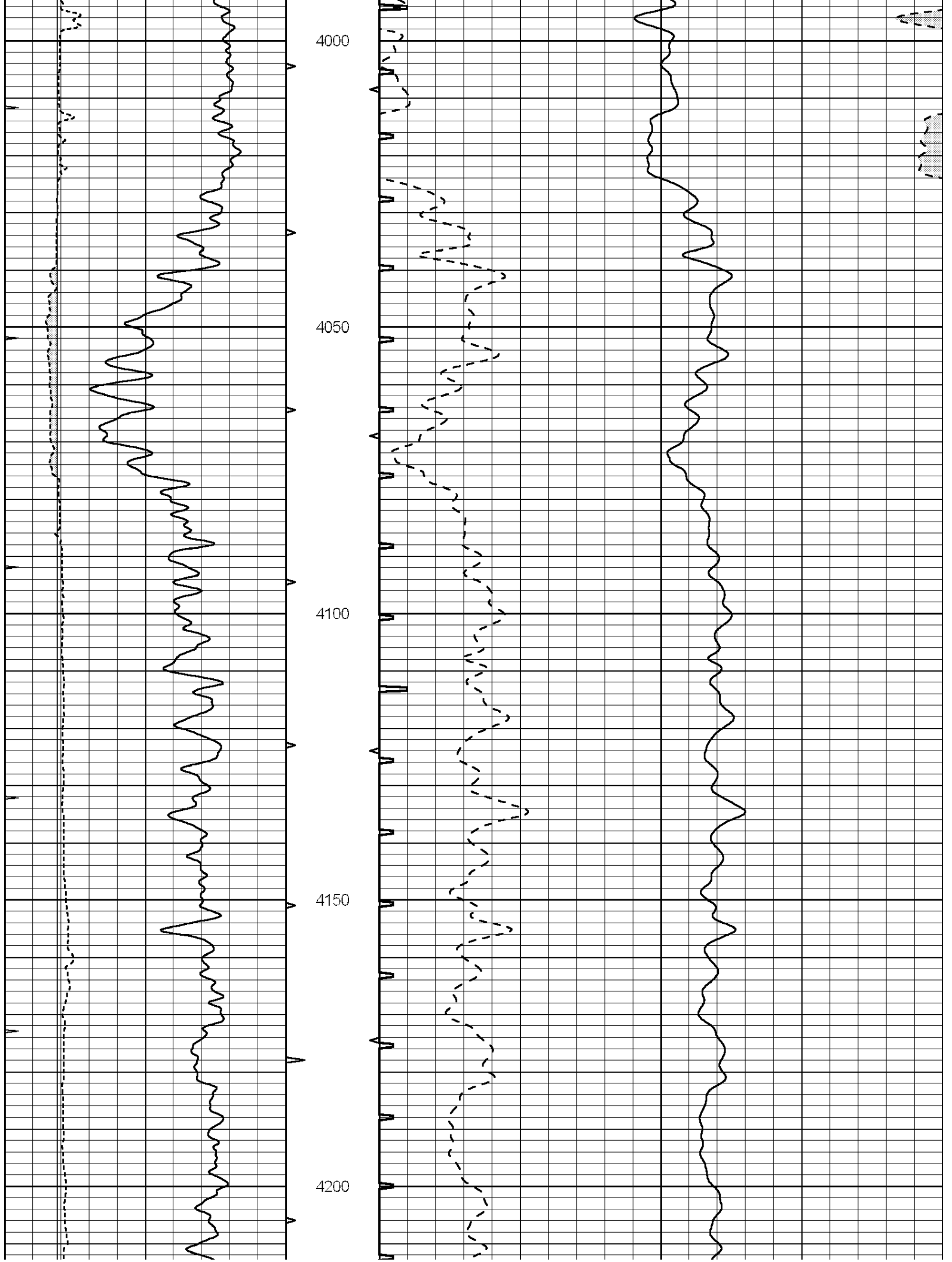
MAIN SECTION

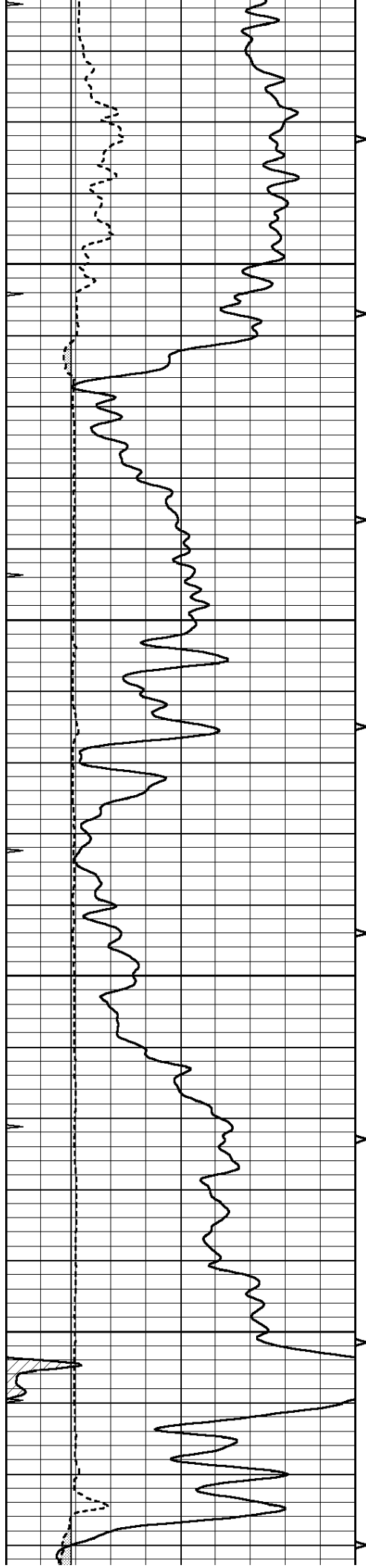
Database File: 1594pe.db  
 Dataset Pathname: pass6.1  
 Presentation Format: slt  
 Dataset Creation: Sun Aug 06 10:28:14 2017 by Calc SOC 120430  
 Charted by: Depth in Feet scaled 1:240

0	GAMMA RAY (GAPI)	150	ABHV	140	DELTA TIME (usec/ft)	40
6	CALIPER (in)	16	10 (ft3)	0	30	SONIC POROSITY (pu)
0	MINMK	20	TBHV	0	ITT (msec)	20
			0 (ft3)	10		







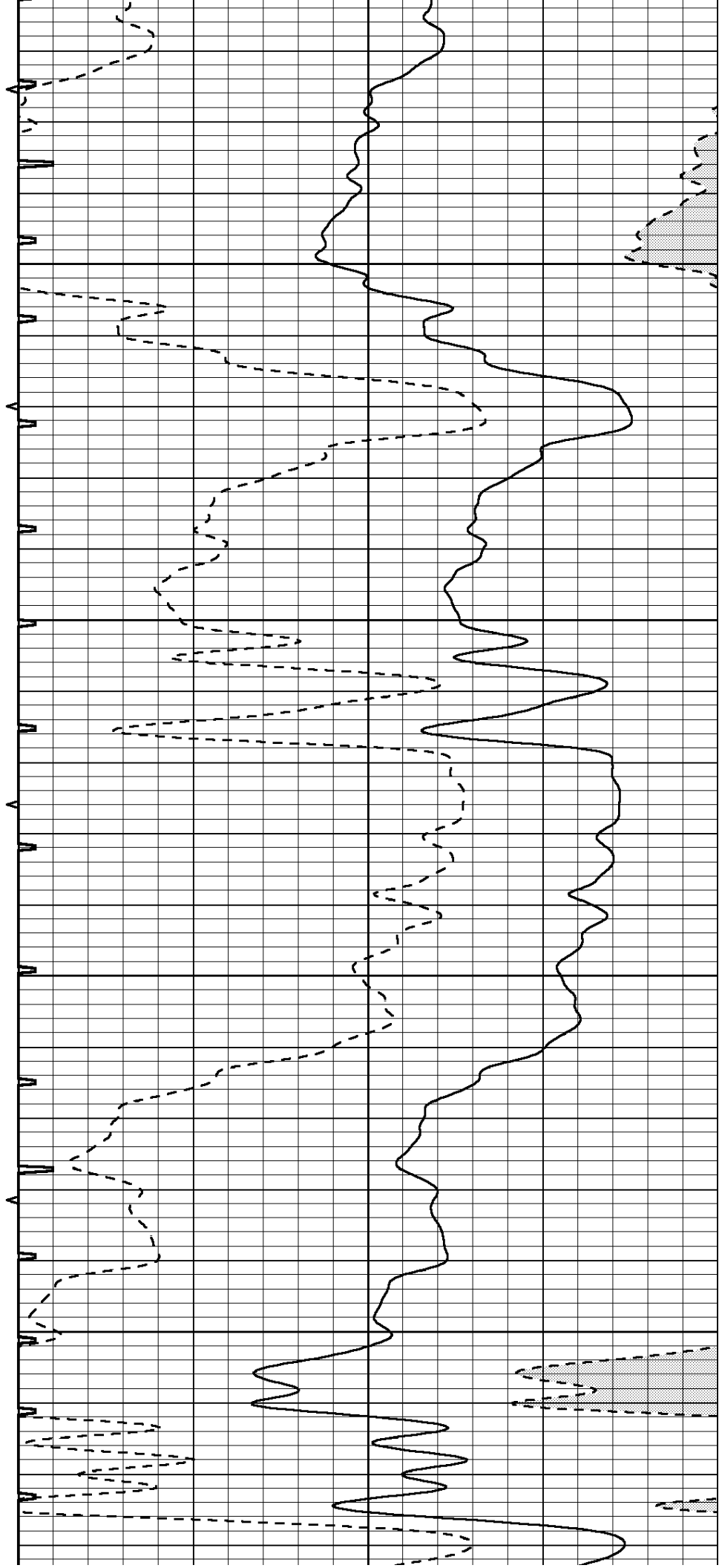


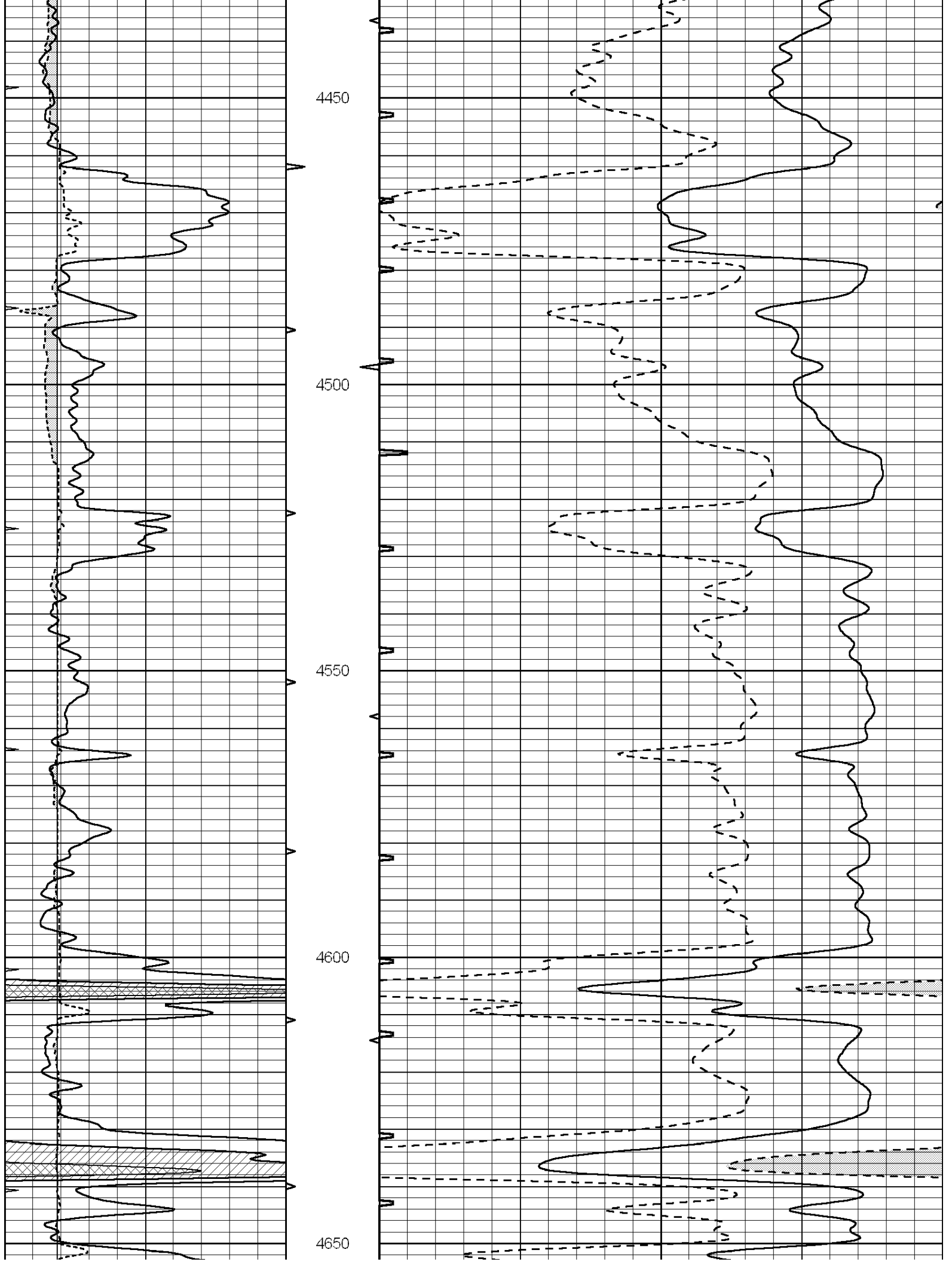
4250

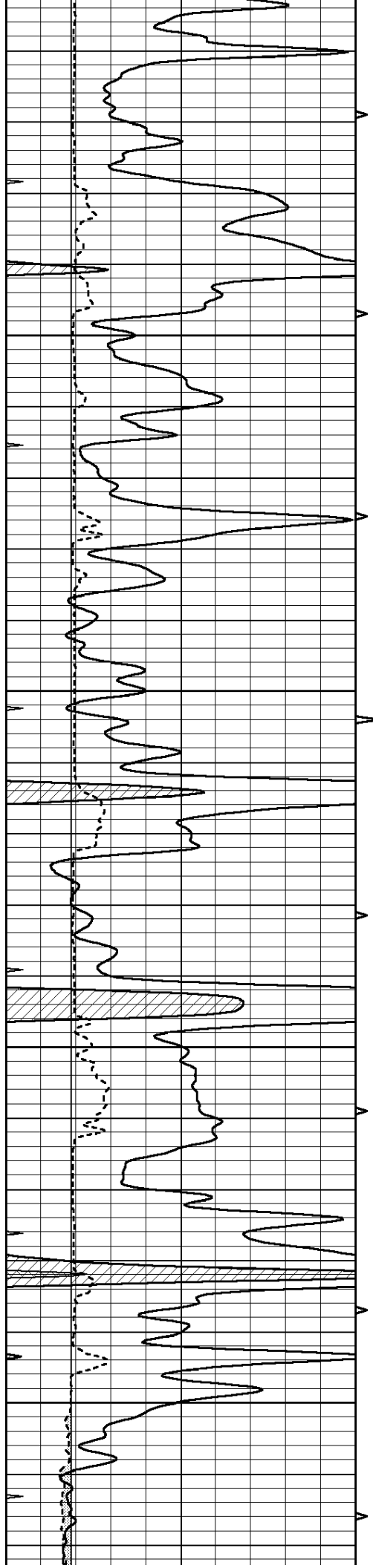
4300

4350

4400





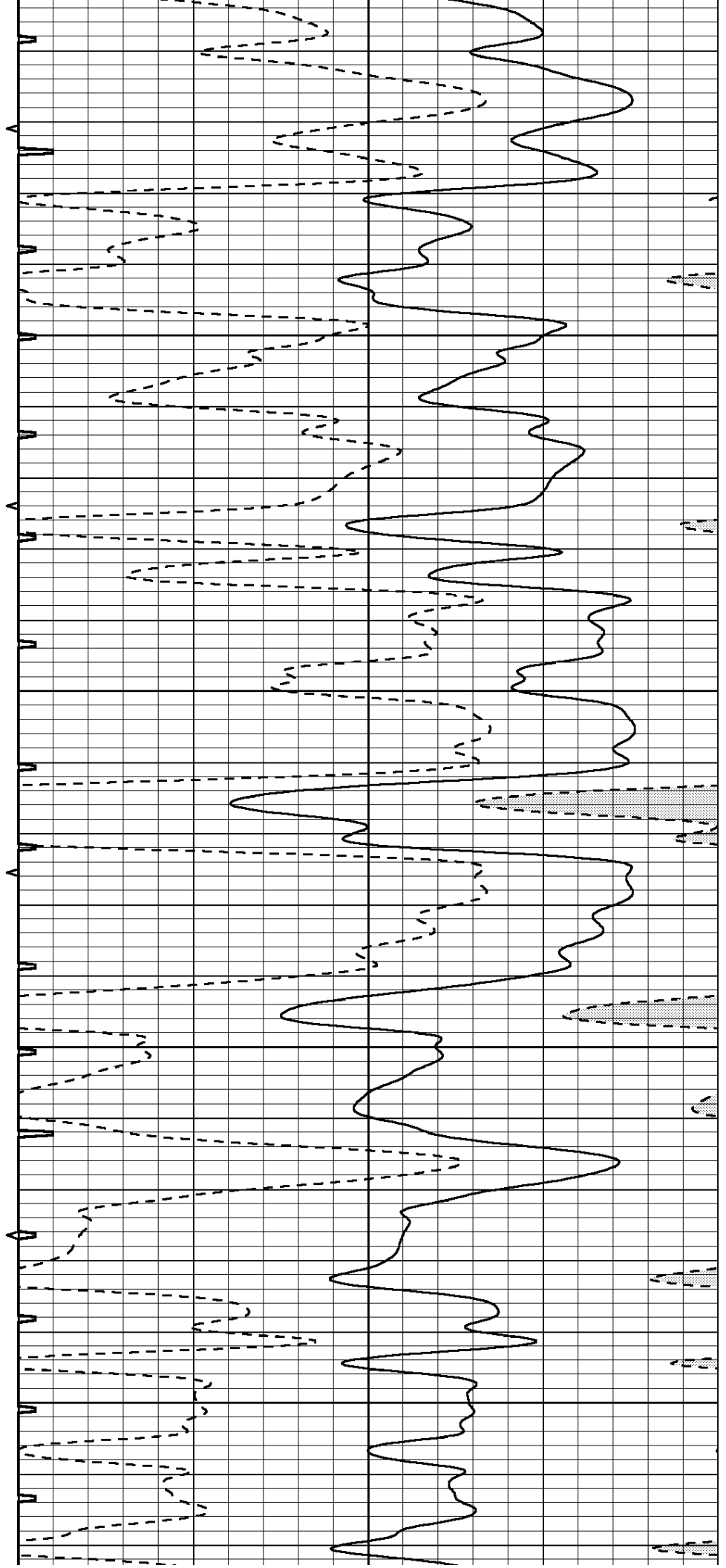


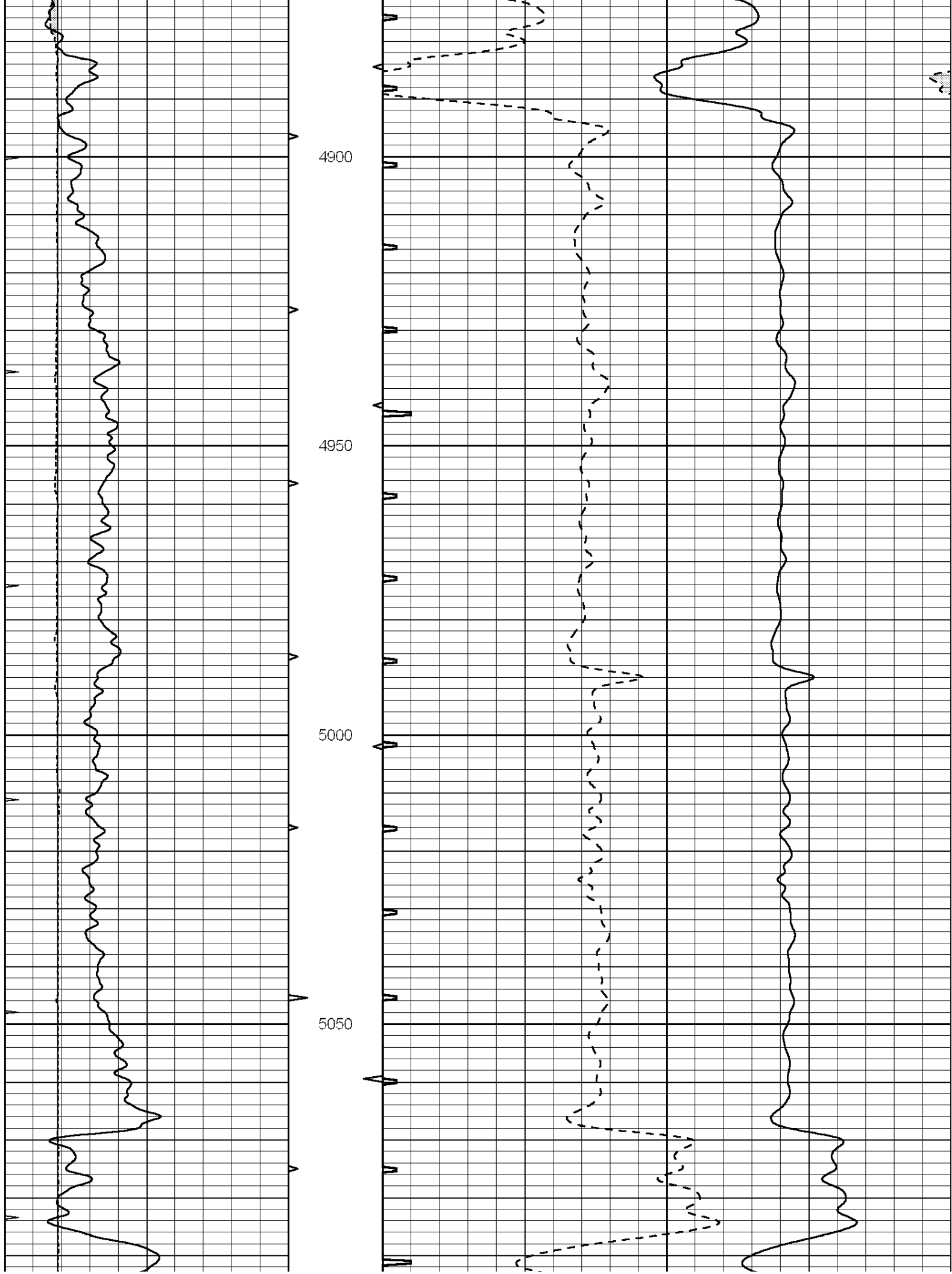
4700

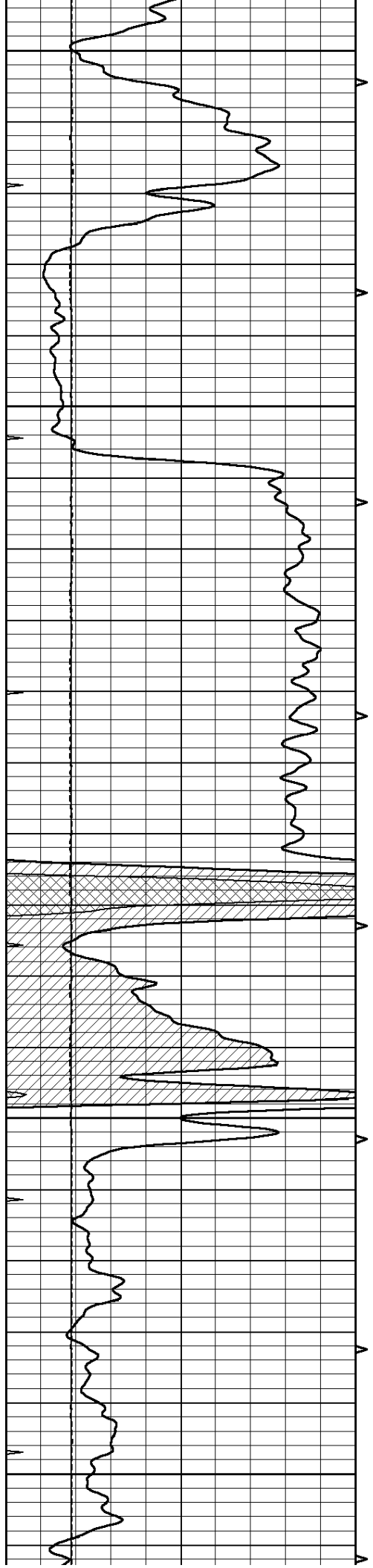
4750

4800

4850







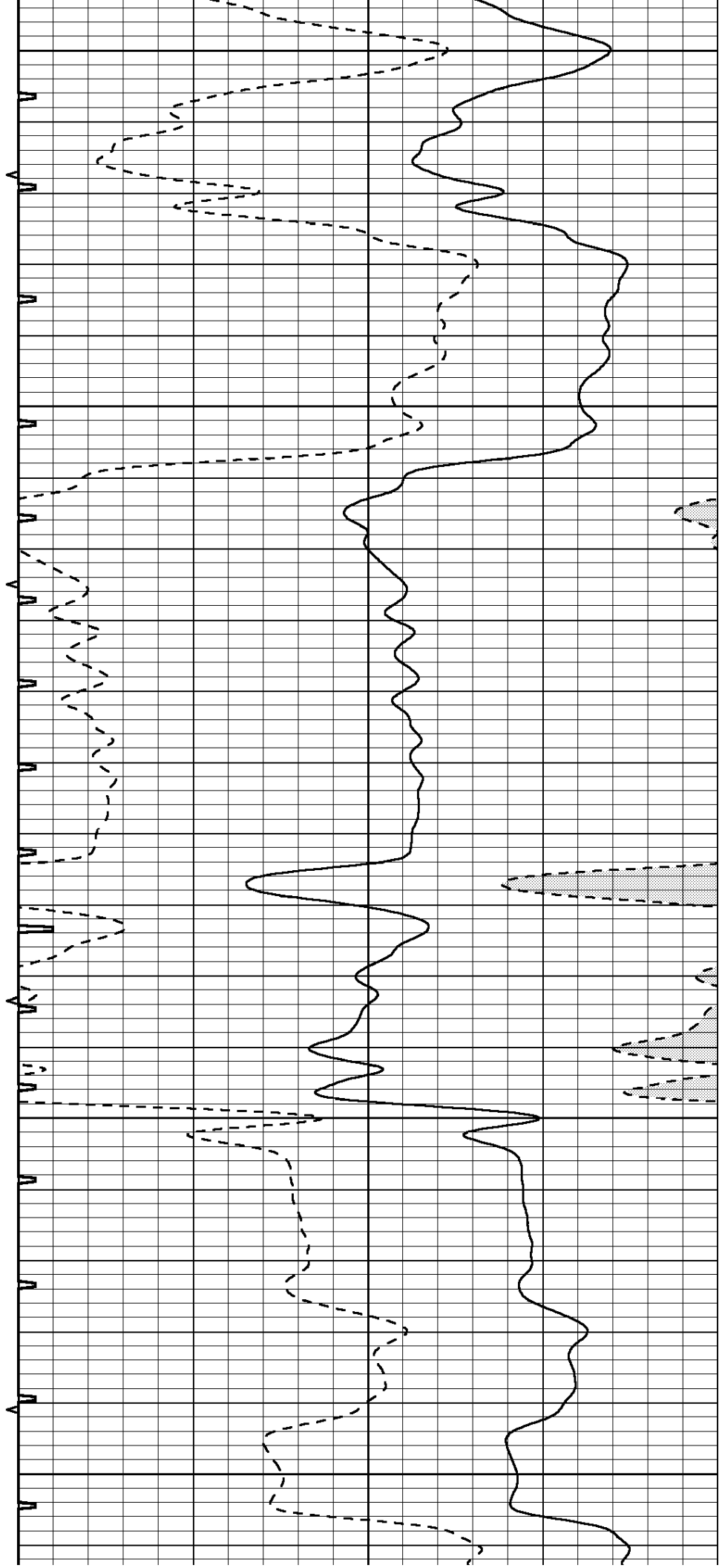
5100

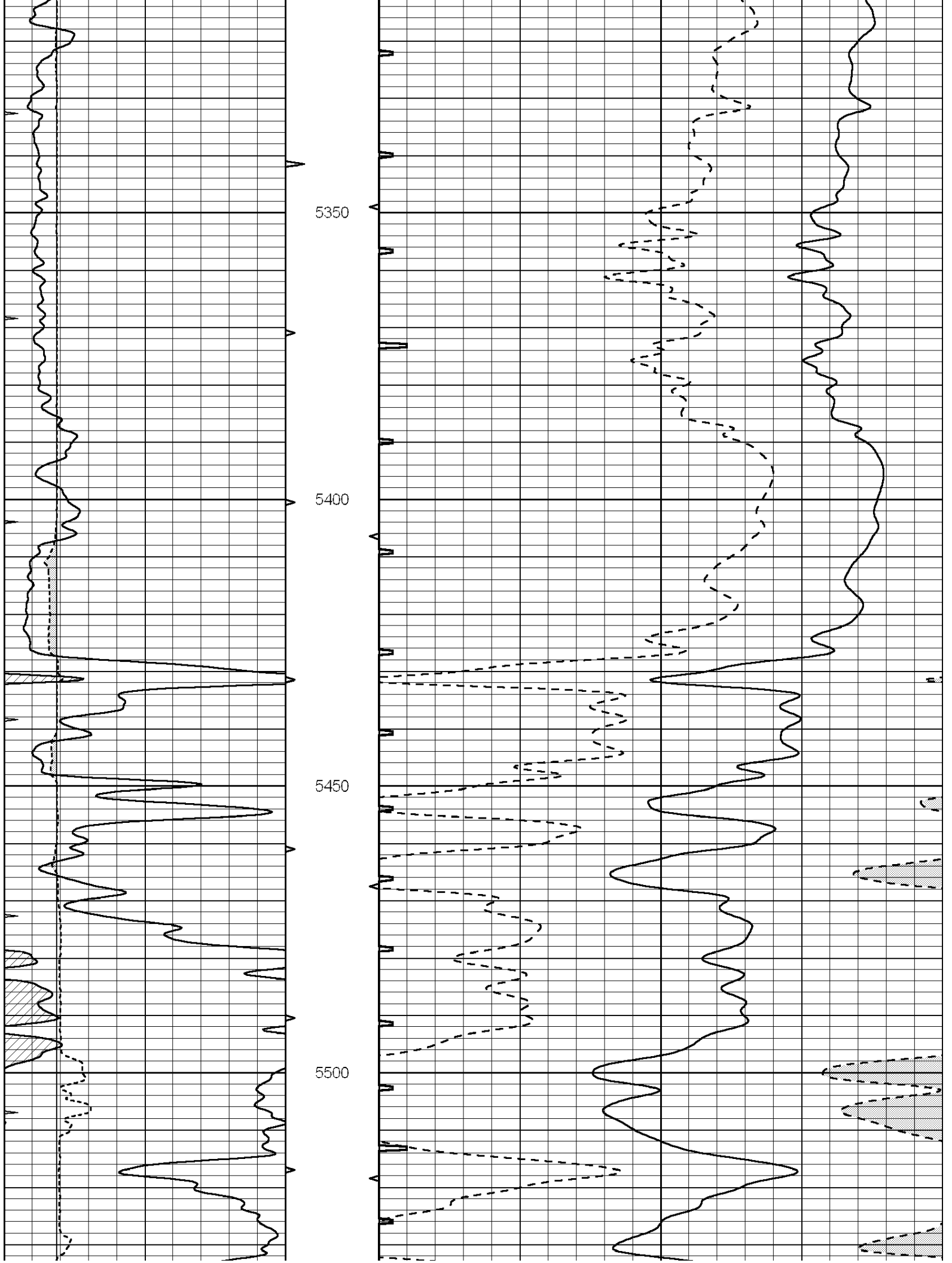
5150

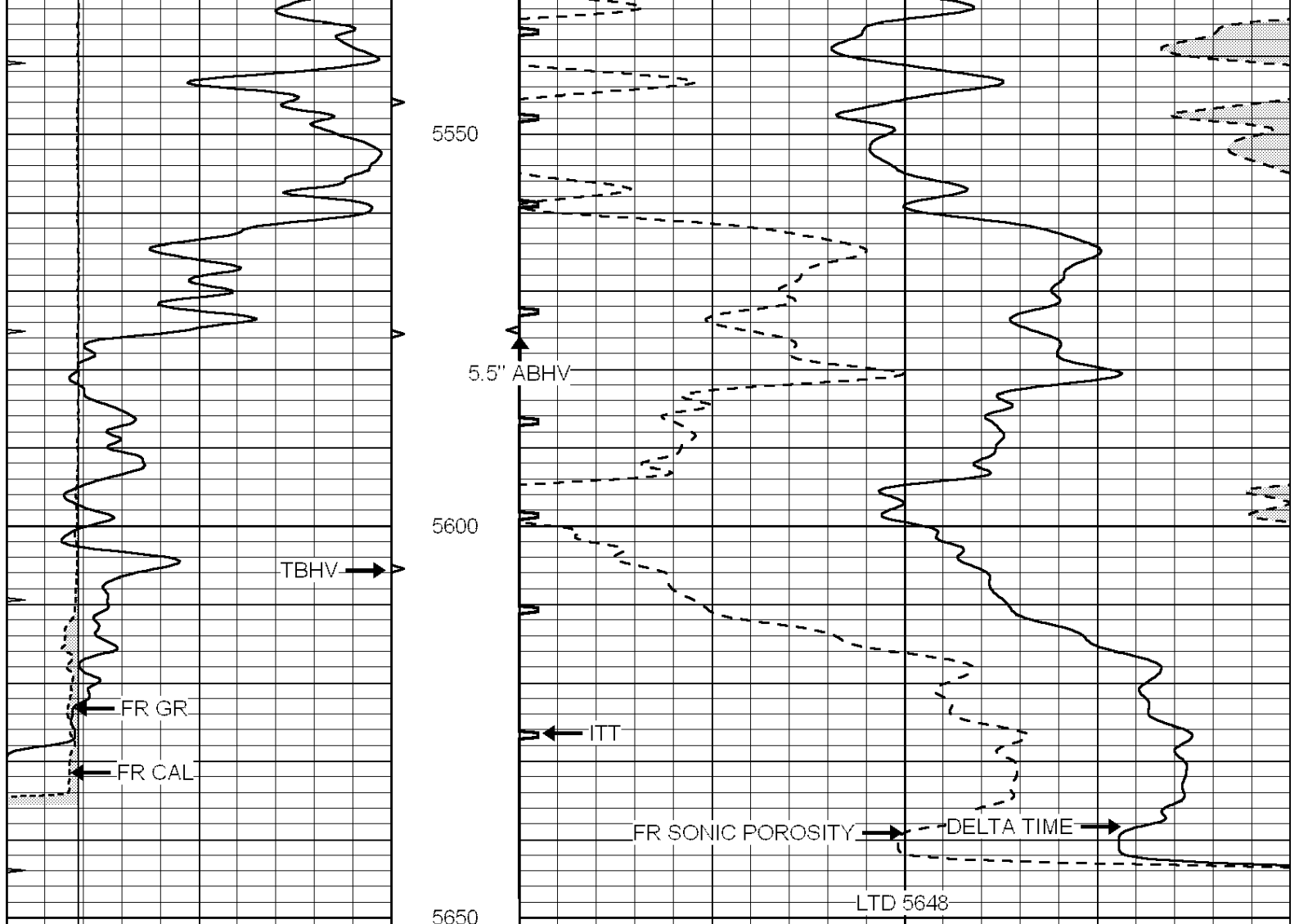
5200

5250

5300







0	GAMMA RAY (GAPI)	150	ABHV	140	DELTA TIME (usec/ft)	40
6	CALIPER (in)	16	10 (ft3)	0 30	SONIC POROSITY (pu)	-10
0	MINMK	20	TBHV	0	ITT (msec)	20
			0 (ft3)	10		