



# FRAC - FINDER LOG

Company LOTUS OPERATING COMPANY, LLC.  
 Well #1 CHARLIE  
 Field HARDTNER / STRANATHAN  
 County BARBER  
 State KANSAS

Company LOTUS OPERATING COMPANY, LLC.  
 Well #1 CHARLIE  
 Field HARDTNER / STRANATHAN  
 County BARBER State KANSAS

Location: API # : 15-007-24321-0000  
 S/2 - SW - SW  
 SEC 11 TWP 35S RGE 13W  
 Permanent Datum GROUND LEVEL Elevation 1472  
 Log Measured From KELLY BUSHING 8' A.G.L.  
 Drilling Measured From KELLY BUSHING  
 Other Services  
 CDL/CNL/PE  
 DIL/MEU/SON  
 Elevation  
 K.B. 1480  
 D.F. 1478  
 G.L. 1472

Date	8/6/17		
Run Number	TWO		
Depth Driller	5650		
Depth Logger	5648		
Bottom Logged Interval	5640		
Top Log Interval	3600		
Casing Driller	8 5/8"@265'		
Casing Logger	265		
Bit Size	7 7/8"		
Type Fluid in Hole	CHEMICAL MUD	CHLORIDES 3,000 PPM	
Density / Viscosity	9.147		
pH / Fluid Loss	11.0/10.0		
Source of Sample	FLOWLINE		
Rim @ Meas. Temp	.600@80F		
Rmf @ Meas. Temp	.450@80F		
Rmc @ Meas. Temp	.720@80F		
Source of Rmf / Rmc	MEASUREMENT		
Rim @ BHT	.366@131F		
Time Circulation Stopped	3 HOURS		
Time Logger on Bottom	9:45 A.M.		
Maximum Recorded Temperature	131F		
Equipment Number	922339		
Location	HAYS, KANSAS		
Recorded By	JEFF LUEBBERS		
Witnessed By	TIM HELLMAN		

<<< Fold Here >>>

All interpretations are opinions based on inferences from electrical or other measurements and we cannot and do not guarantee the accuracy or correctness of any interpretation, and we shall not, except in the case of gross or willful negligence on our part, be liable or responsible for any loss, costs, damages, or expenses incurred or sustained by anyone resulting from any interpretation made by any of our officers, agents or employees. These interpretations are also subject to our general terms and conditions set out in our current Price Schedule.

### Comments

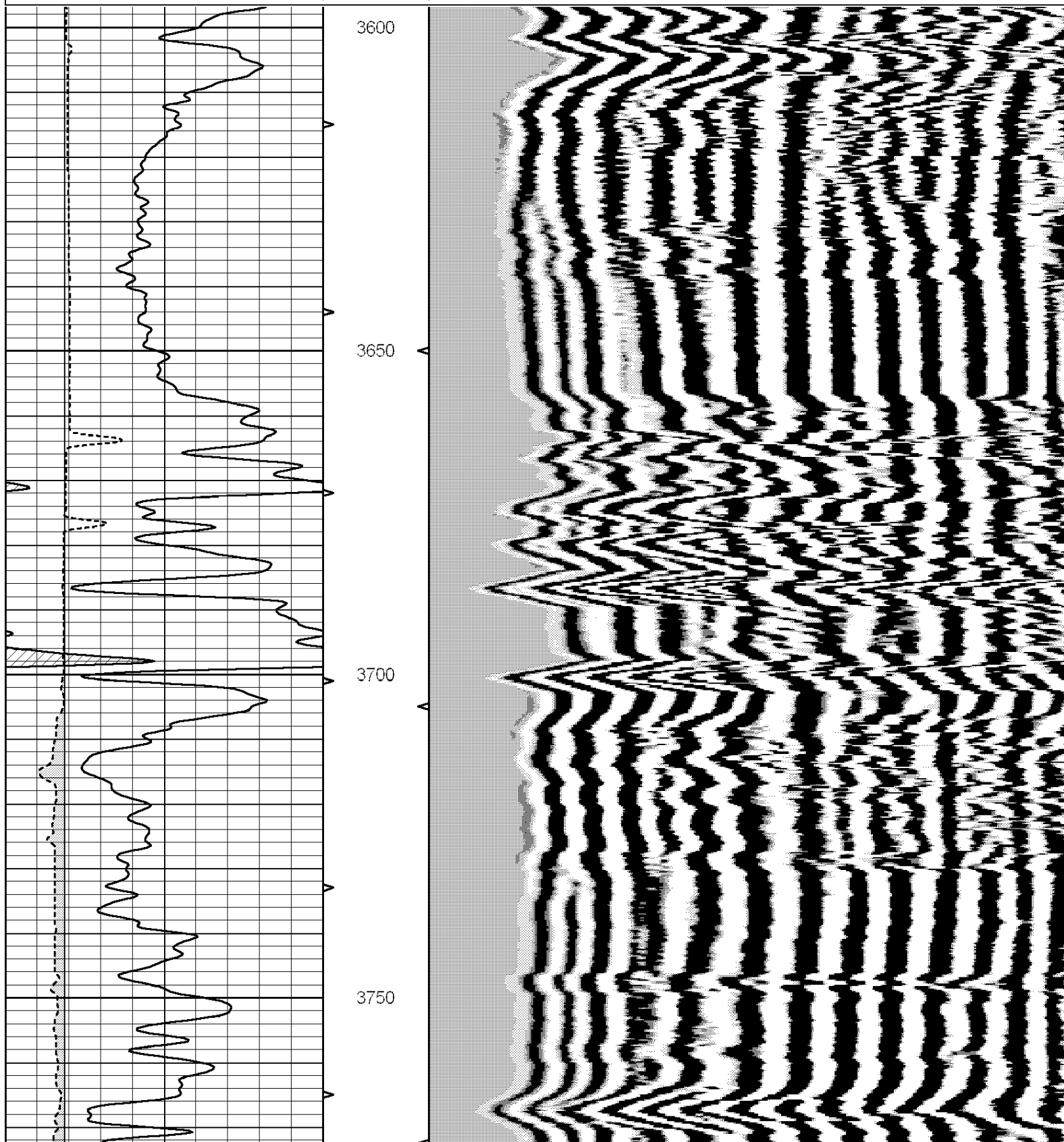
THANK YOU FOR USING ELI WIRELINE HAYS, KANSAS (785) 628-6395  
 DIRECTIONS  
 HARDTNER, KANSAS, 3W. PAST "GYP HILL RD", S. INTO

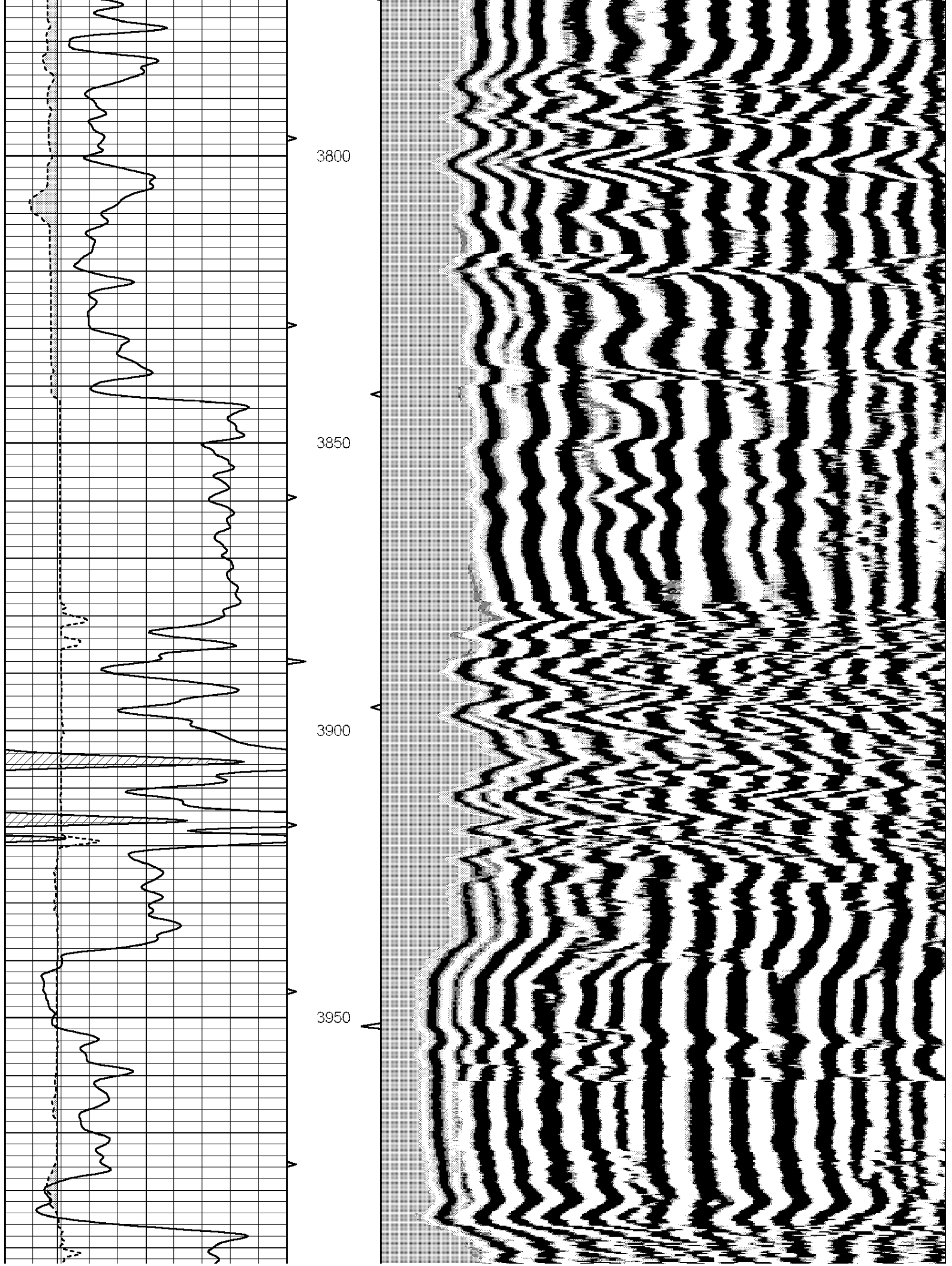


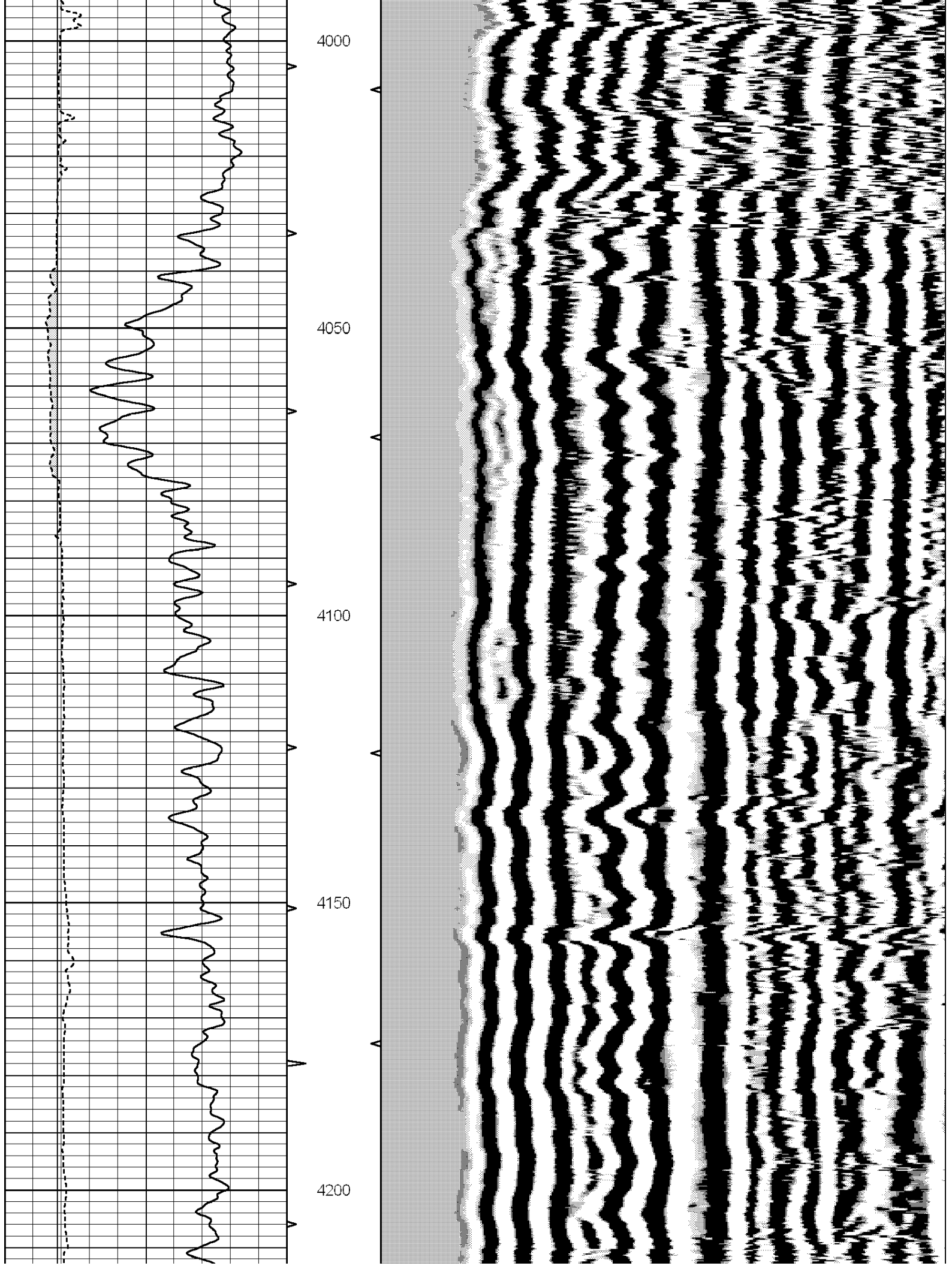
# MAIN SECTION

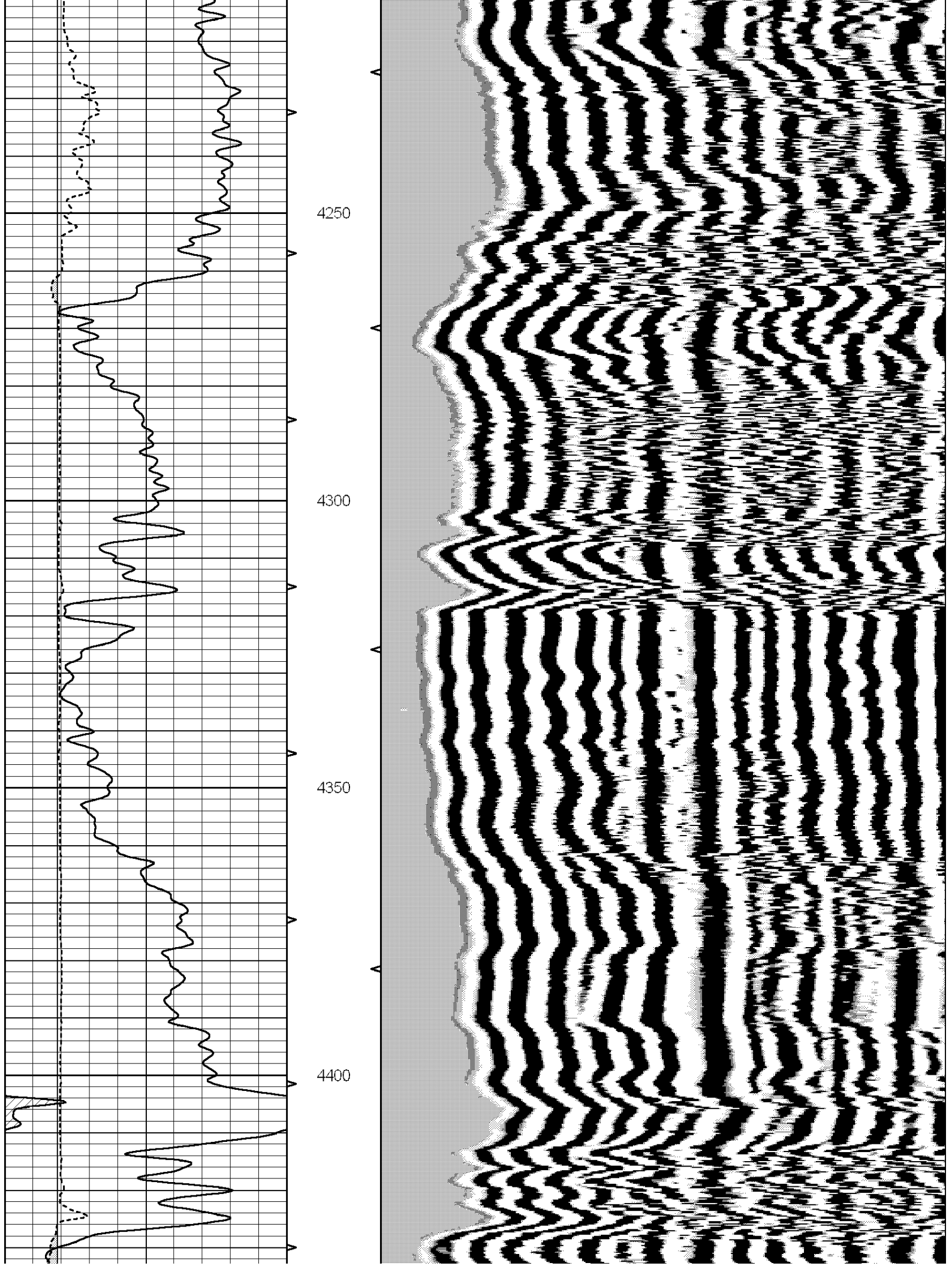
Database File: 1594pe.db  
 Dataset Pathname: pass6.1  
 Presentation Format: frac  
 Dataset Creation: Sun Aug 06 10:28:14 2017 by Calc SOC 120430  
 Charted by: Depth in Feet scaled 1:240

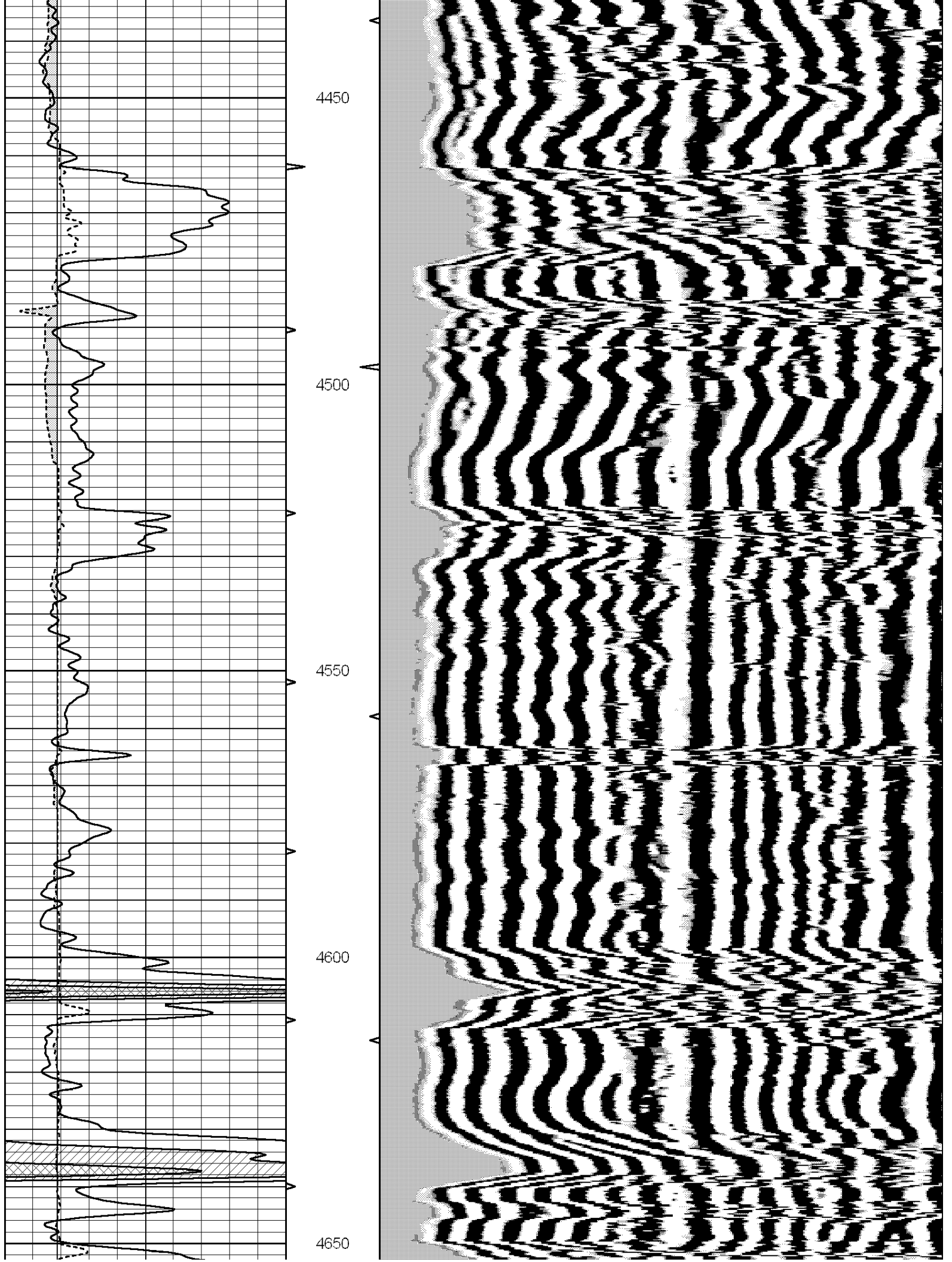
0	GR (GAPI)	150	ABHV	200	WWF1	1200
6	BOREID (in)	16	10 (ft3)	0		
6	CALIPER (in)	16	TBHV			
-----			0 (ft3)	10		

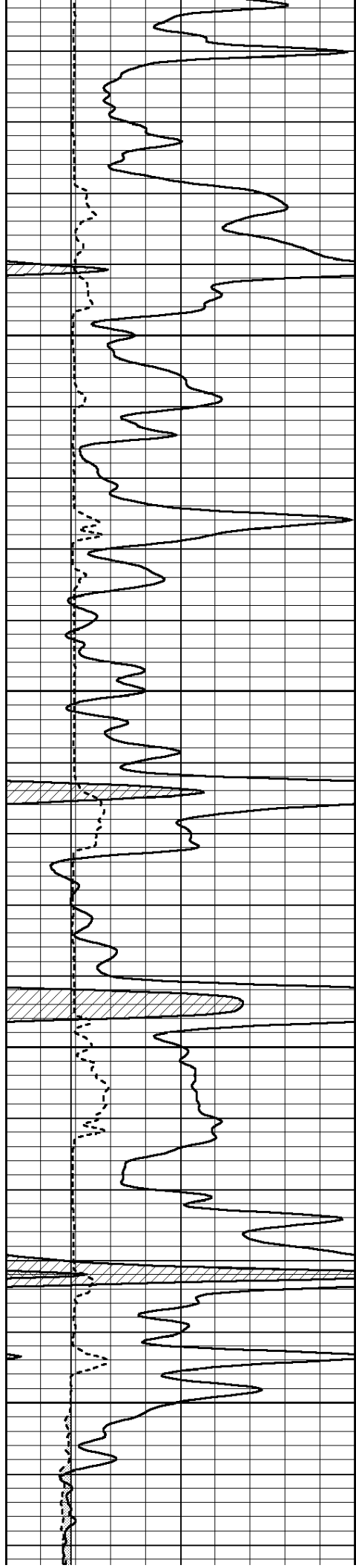










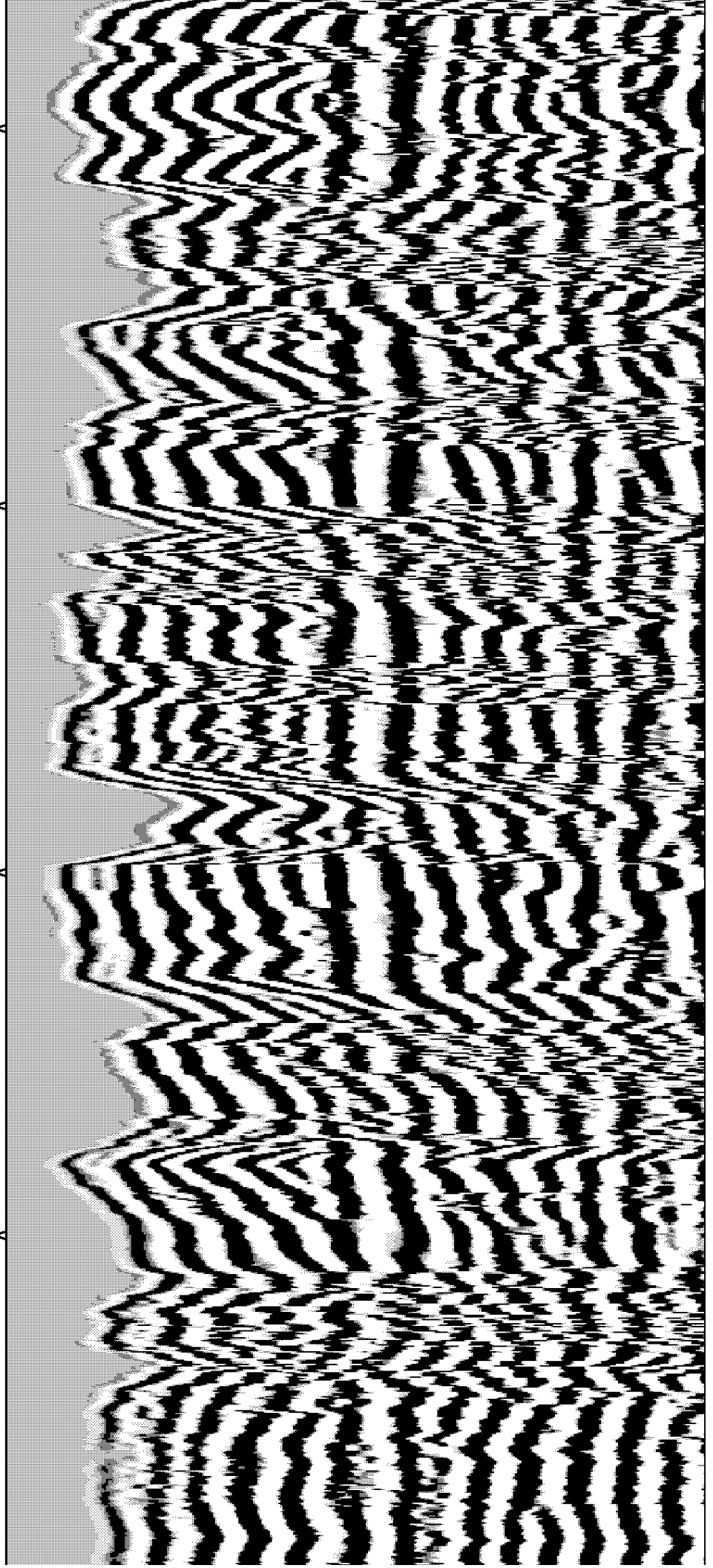


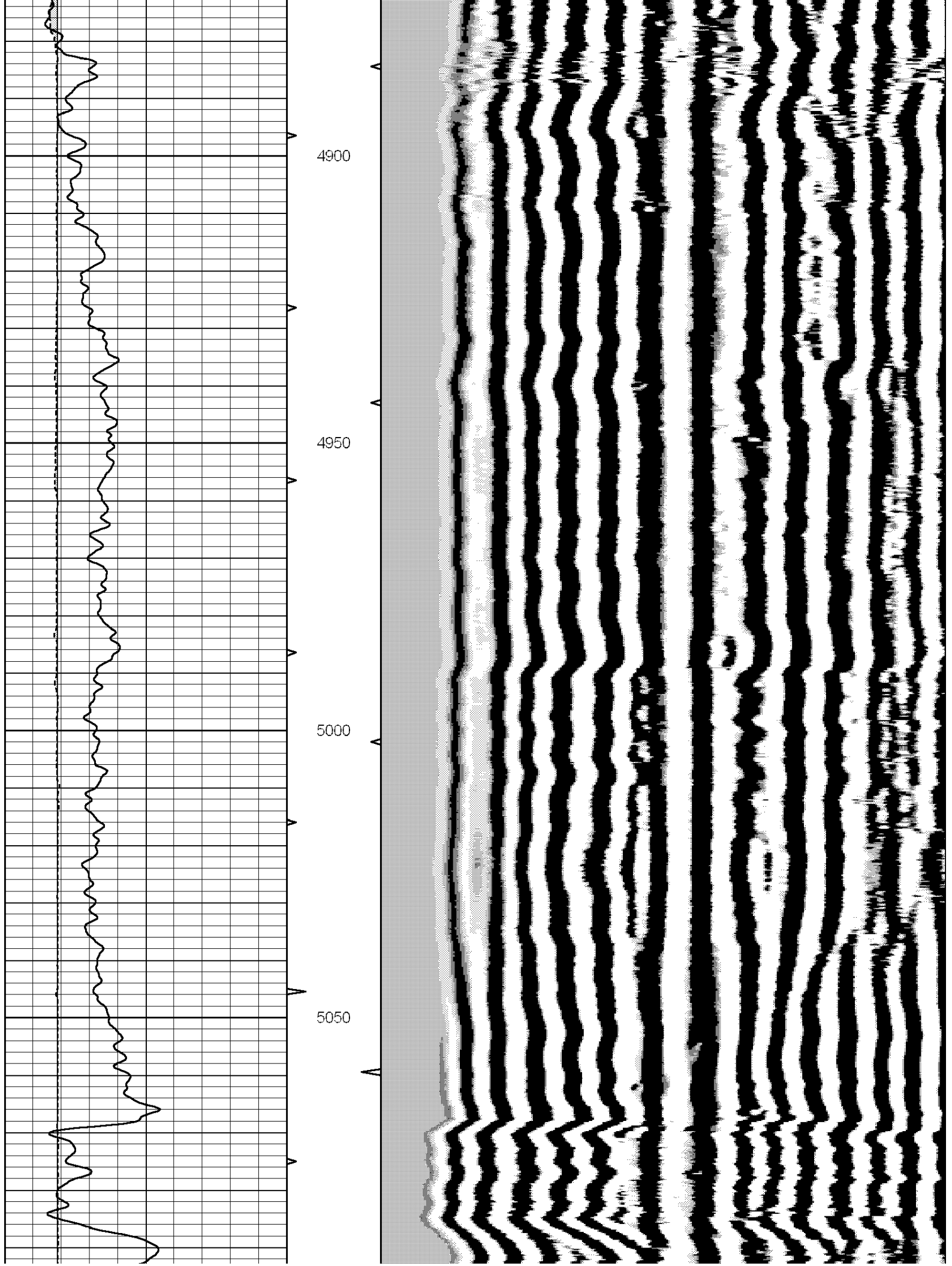
4700

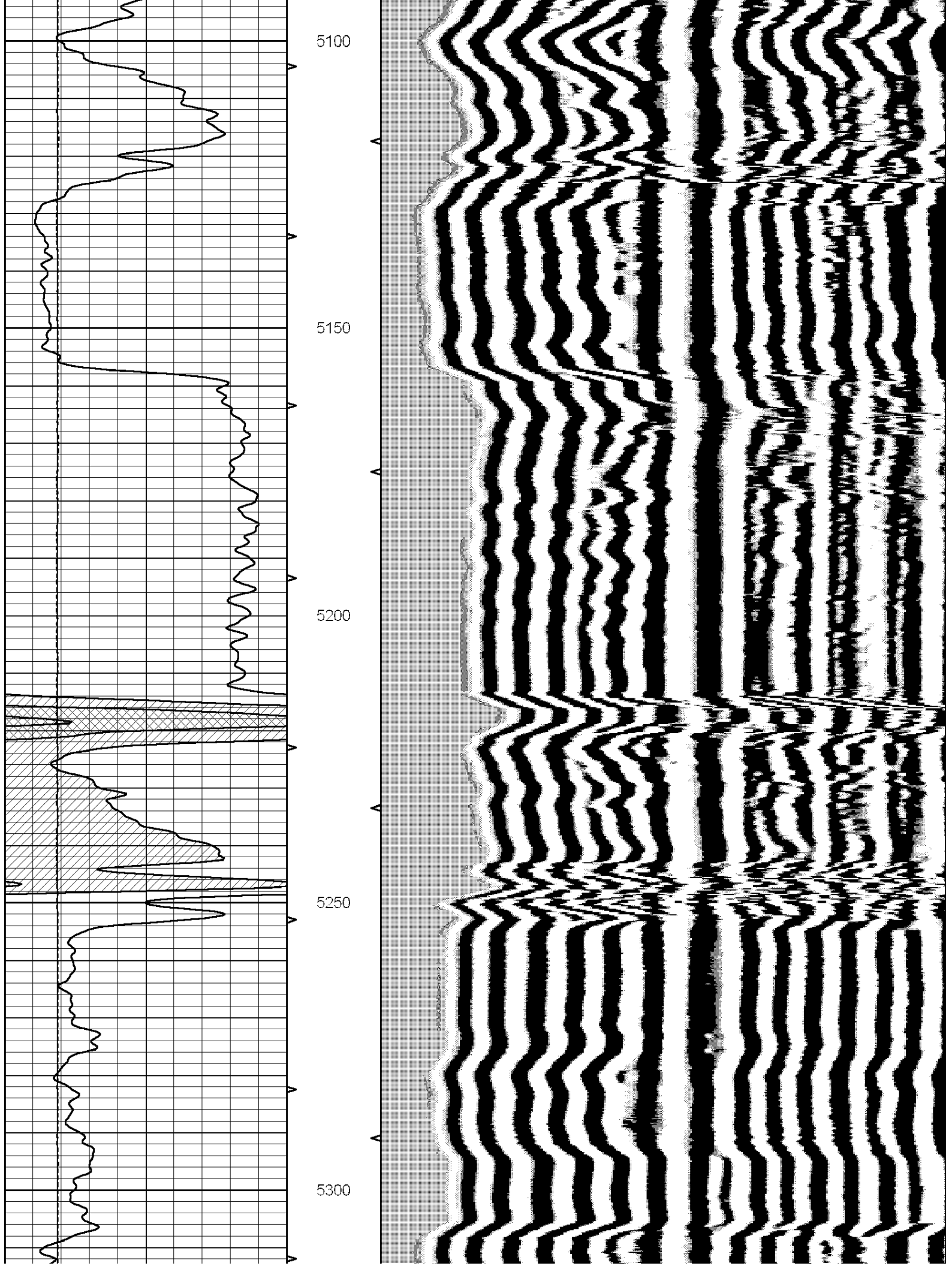
4750

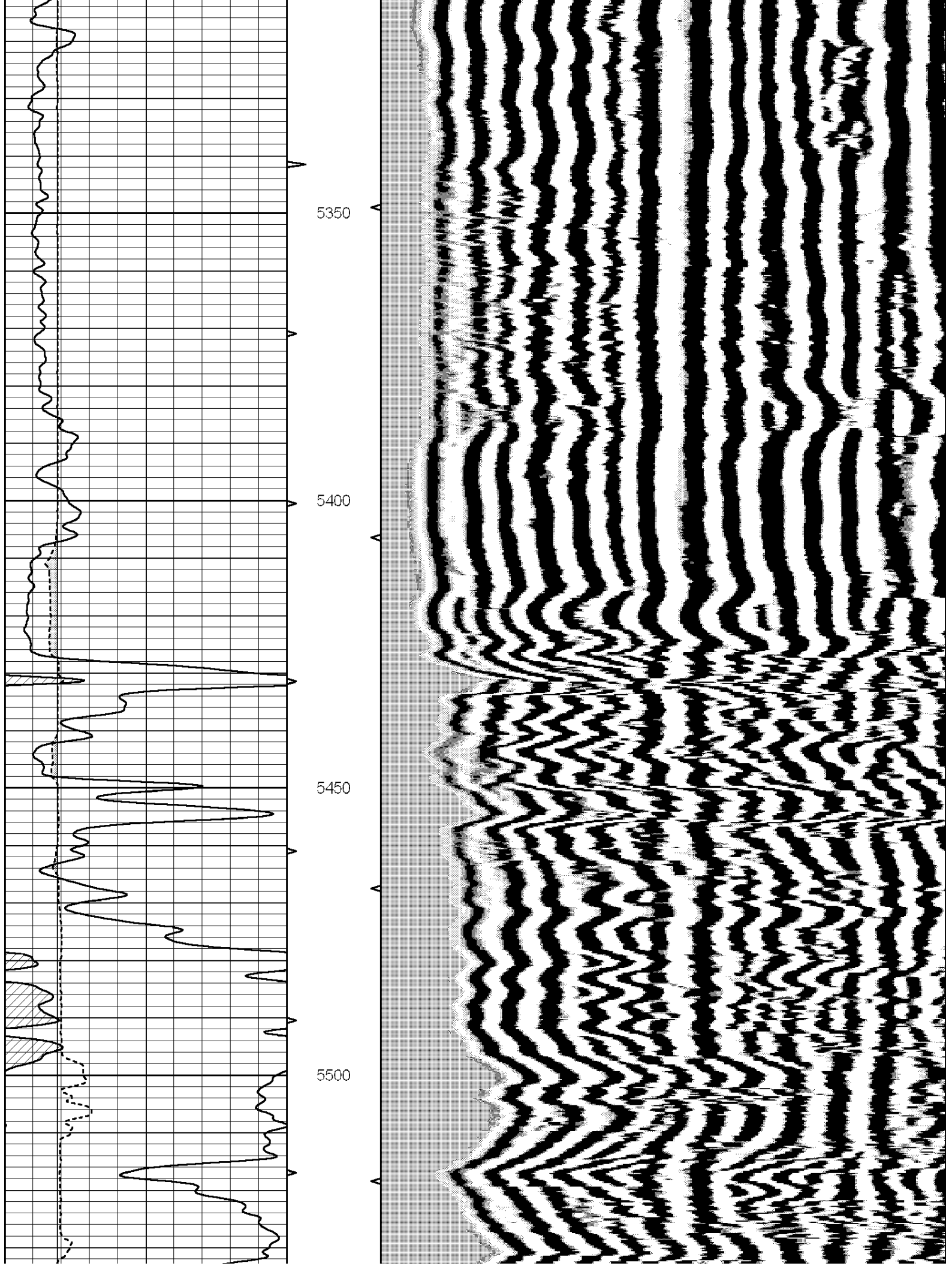
4800

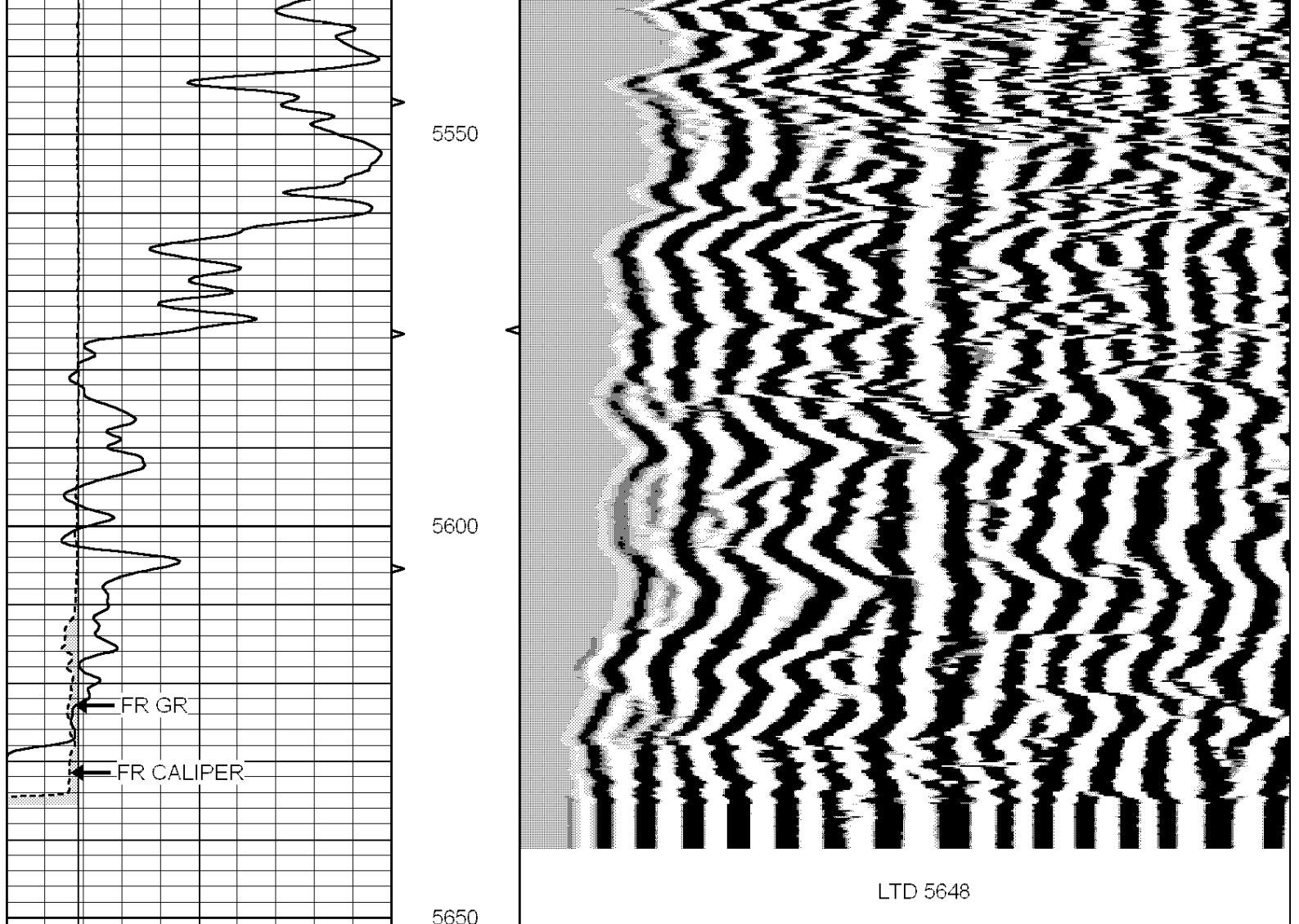
4850











0	GR (GAPI)	150	ABHV	200	WVF1	1200
6	BOREID (in)	16	10 (ft3)	0		
6	CALIPER (in)	16	TBHV			
			0 (ft3)	10		