

Gamma Ray / Neutron  
Log

15-073-24244-00-00

API No.

Company **Barnard Oil Operating**  
Well **Austin-Horst No.1**  
Field **De Malorie-Sowder**  
County **Greenwood** State **Kansas**

Location

3960' FSL & 330' FWL

Other Services  
Perforate

Sec: **12** Twp: **22S** Rge: **10E**

Elevation

Permanent Datum Ground Level Elevation 1210

Log Measured From Kelly Bushing 7 Ft. Above Perm. Datum

Drilling Measured From Kelly Bushing

K.B. 2017  
D.F.  
G.L. 1210

Date 8/15/2019

Run Number One

Type Log GRN

Depth Driller 2172

Depth Logger 2173

Bottom Logged Interval 2172

Top Logged Interval 1000

Type Fluid In Hole Water

Salinity, PPM CL ///

Density ///

Level Full

Max. Rec. Temp. F 98

Operating Rig Time ///

Equipment -- Location 902 Hays

Recorded By Scott Chesney

Witnessed By Dick Barnard

Borehole Record

Run No Bit From To Size Wgt. From To

4.5 0 TD

Casing Record

Dylan Barnard

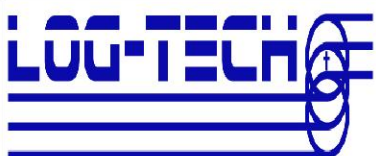
<<< Fold Here >>>

All interpretations are opinions based on inferences from electrical or other measurements and we cannot and do not guarantee the accuracy or correctness of any interpretation, and we shall not, except in the case of gross or willful negligence on our part, be liable or responsible for any loss, costs, damages, or expenses incurred or sustained by anyone resulting from any interpretation made by any of our officers, agents or employees. These interpretations are also subject to our general terms and conditions set out in our current Price Schedule.

Comments

Thank you for using Log-Tech

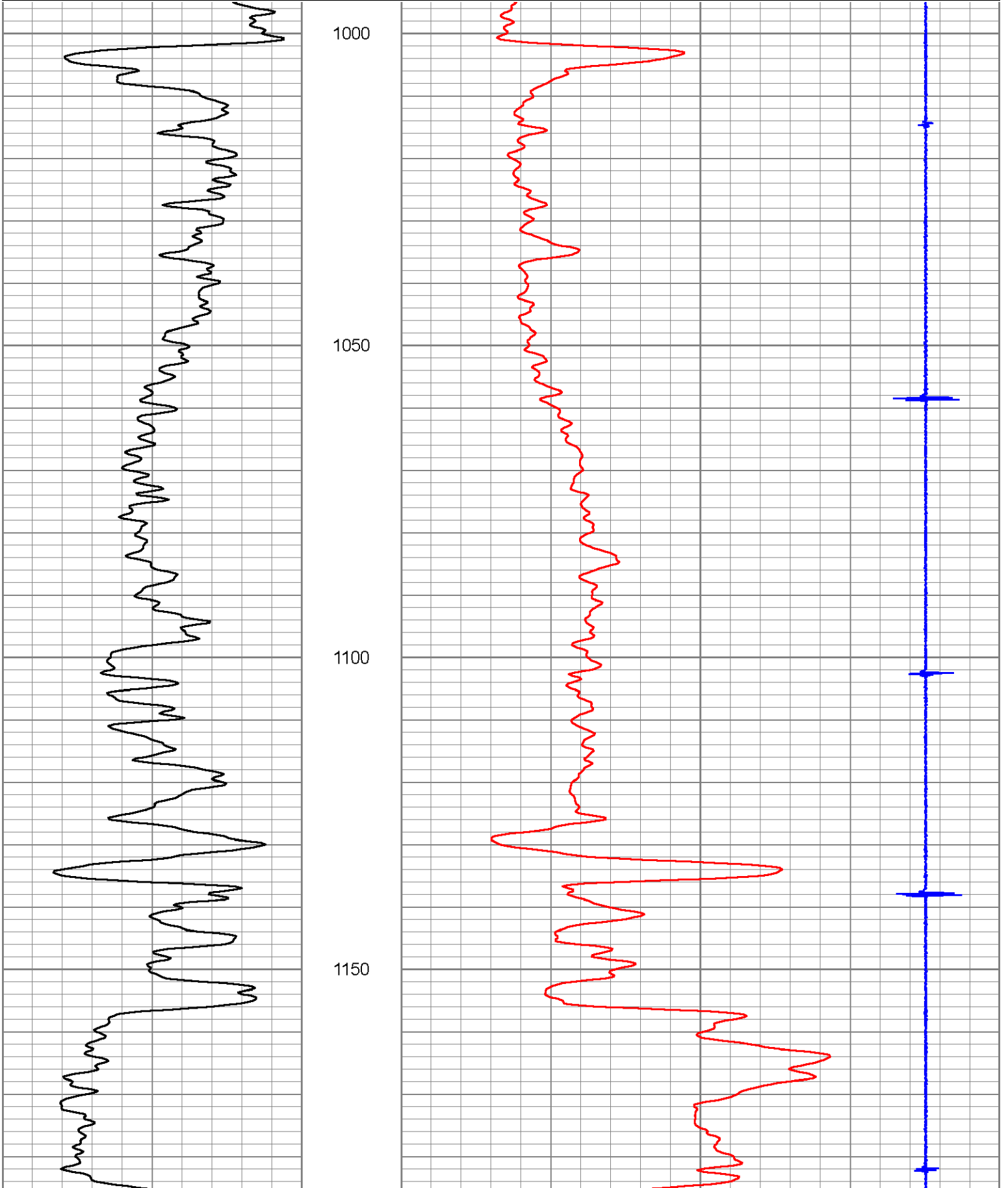
Madison, 5W, 1/4N, 3W, 3/4N,  
E into

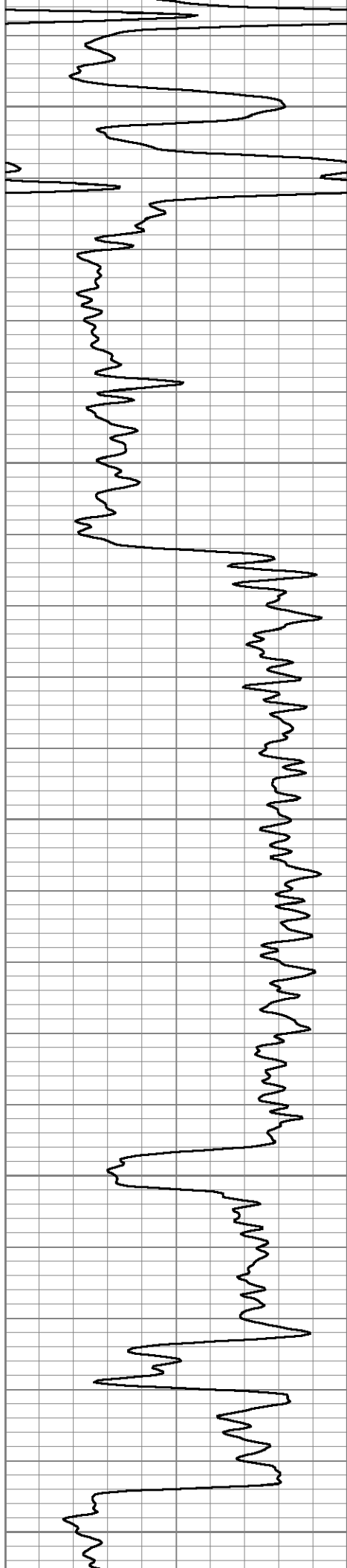


Main Pass

Database File barnard-austin-horst1.db  
Dataset Pathname grn/pass3  
Presentation Format gr-n-ccl  
Dataset Creation Thu Aug 15 09:14:30 2019  
Charted by Depth in Feet scaled 1:240

0	GR (GAPI)	150	150	NEU (cps)	1750	
				55	CCL	-18





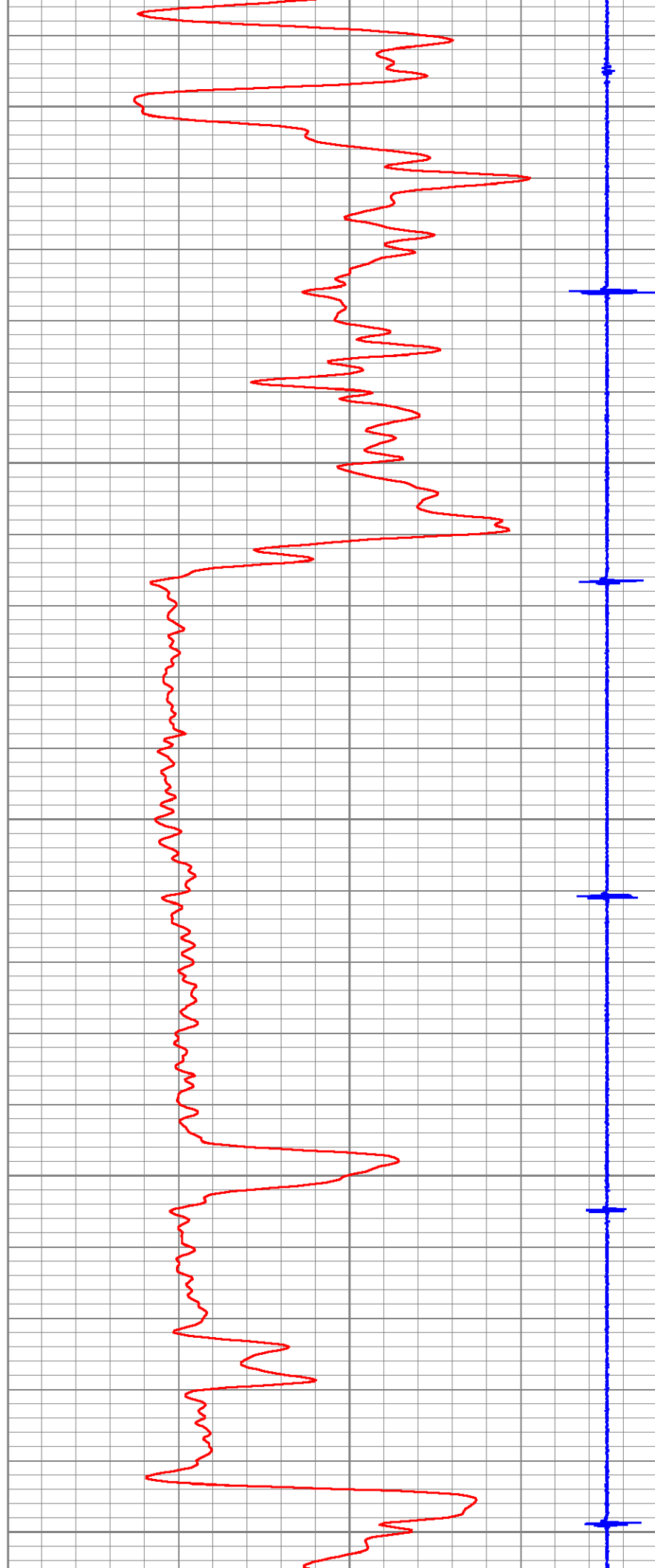
1200

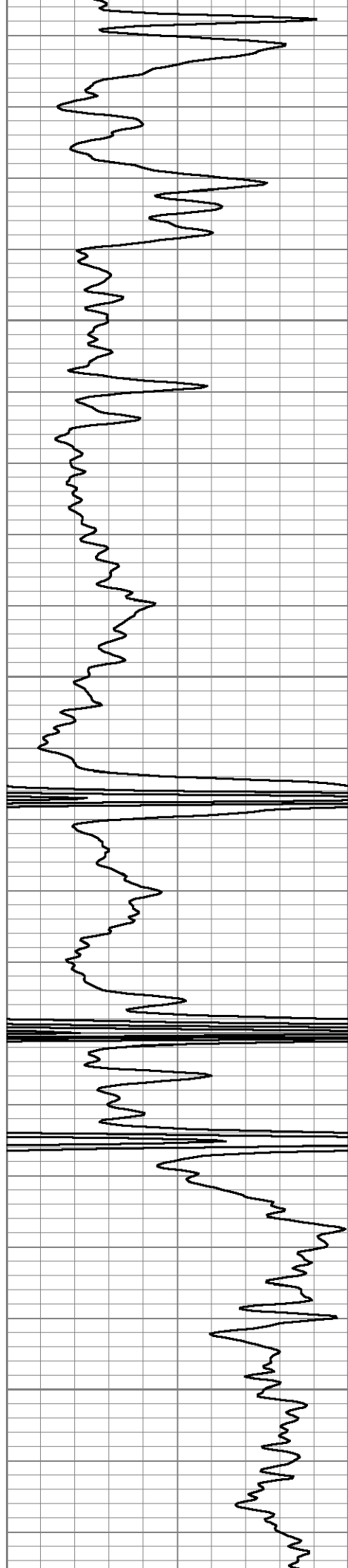
1250

1300

1350

1400



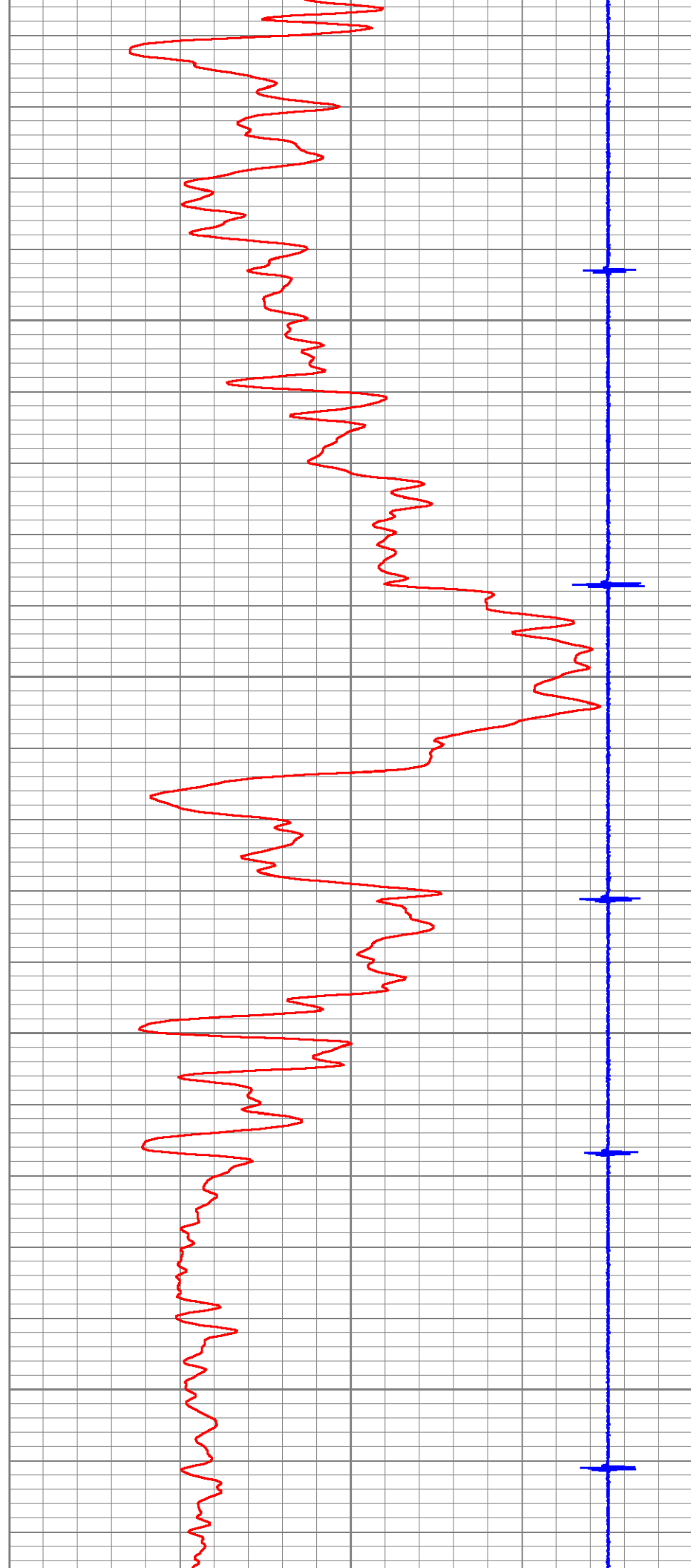


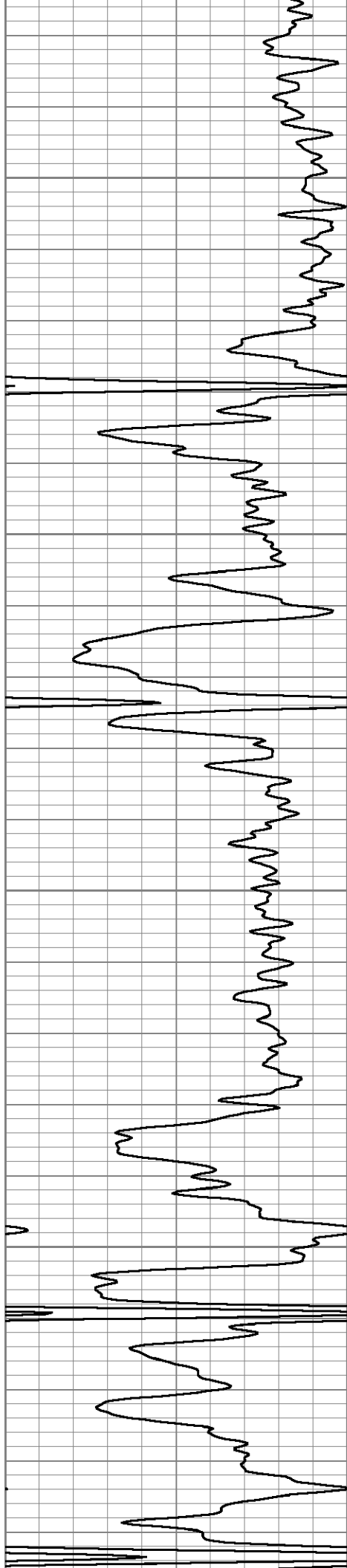
1450

1500

1550

1600



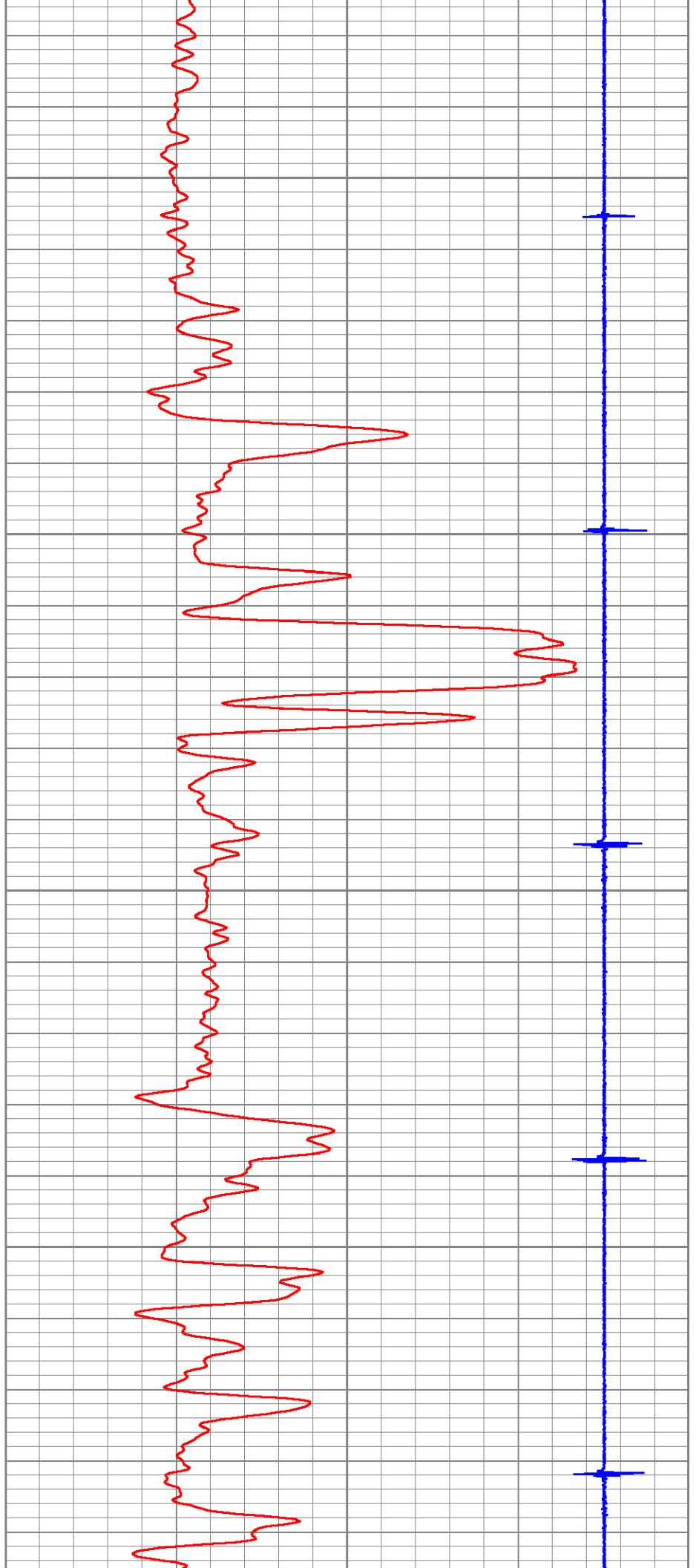


1650

1700

1750

1800





1850

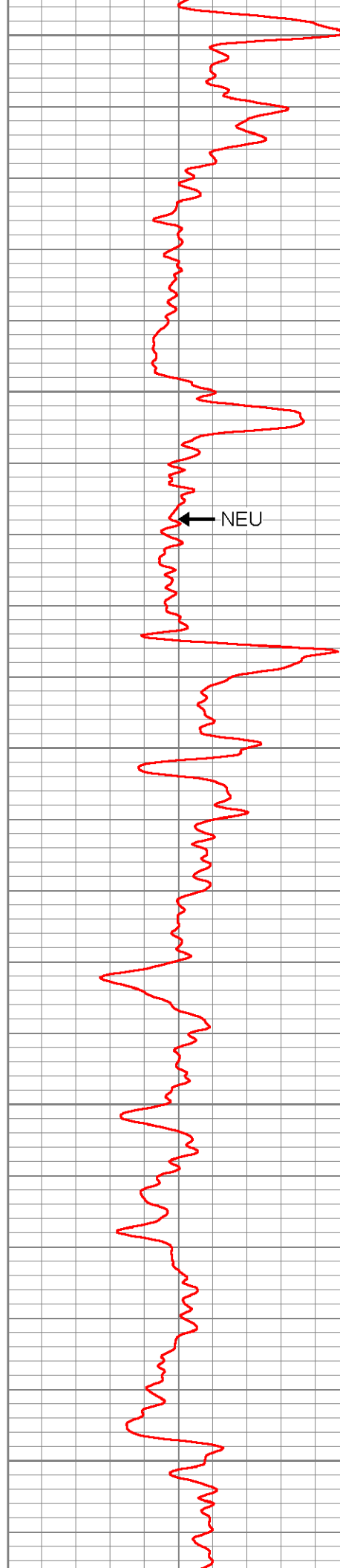
1900

1950

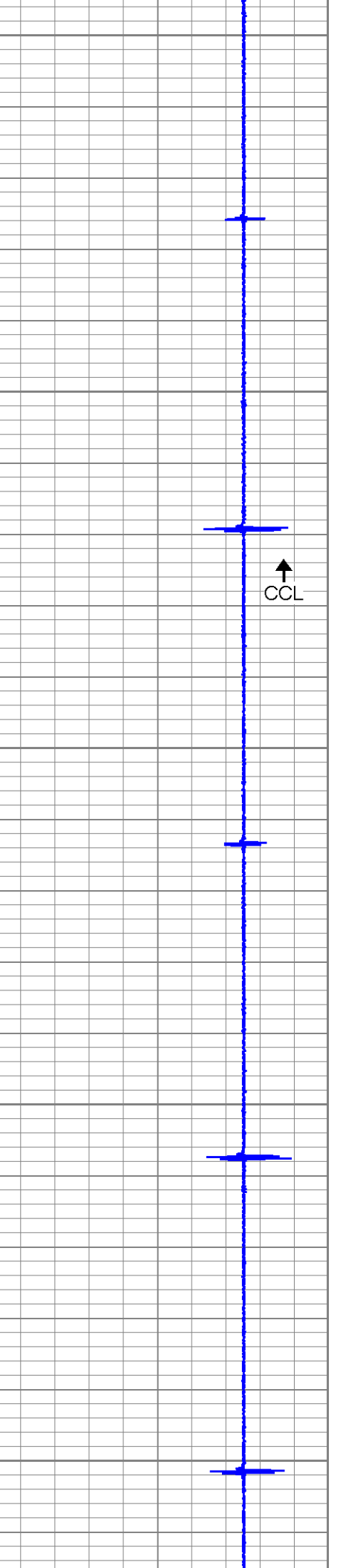
2000

2050

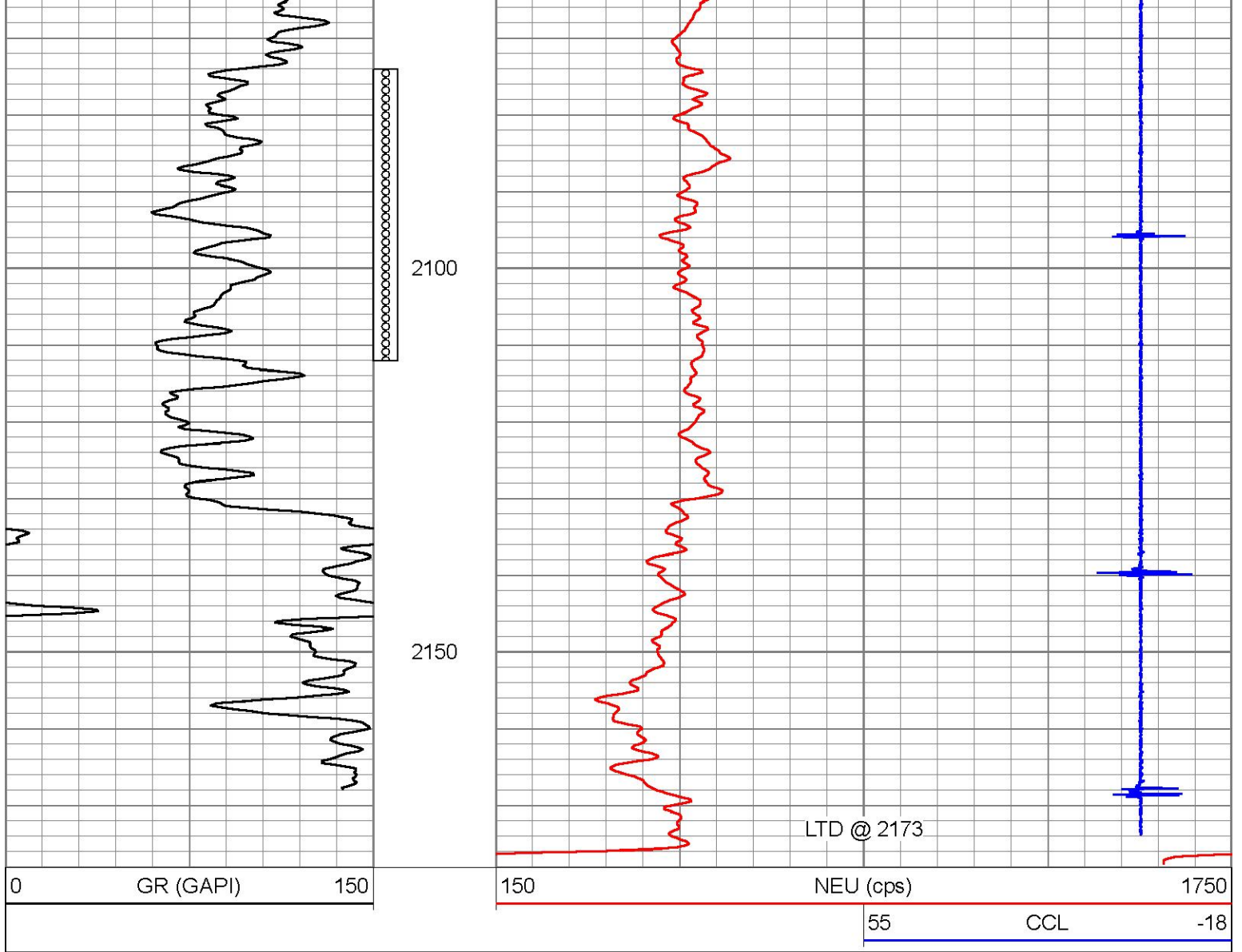
GR



NEU

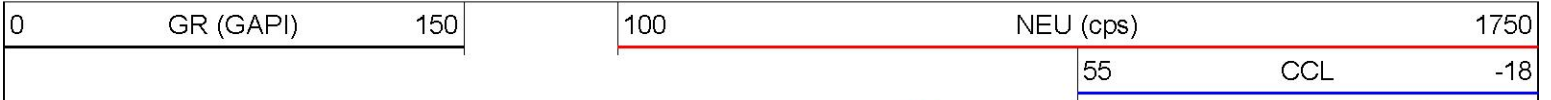


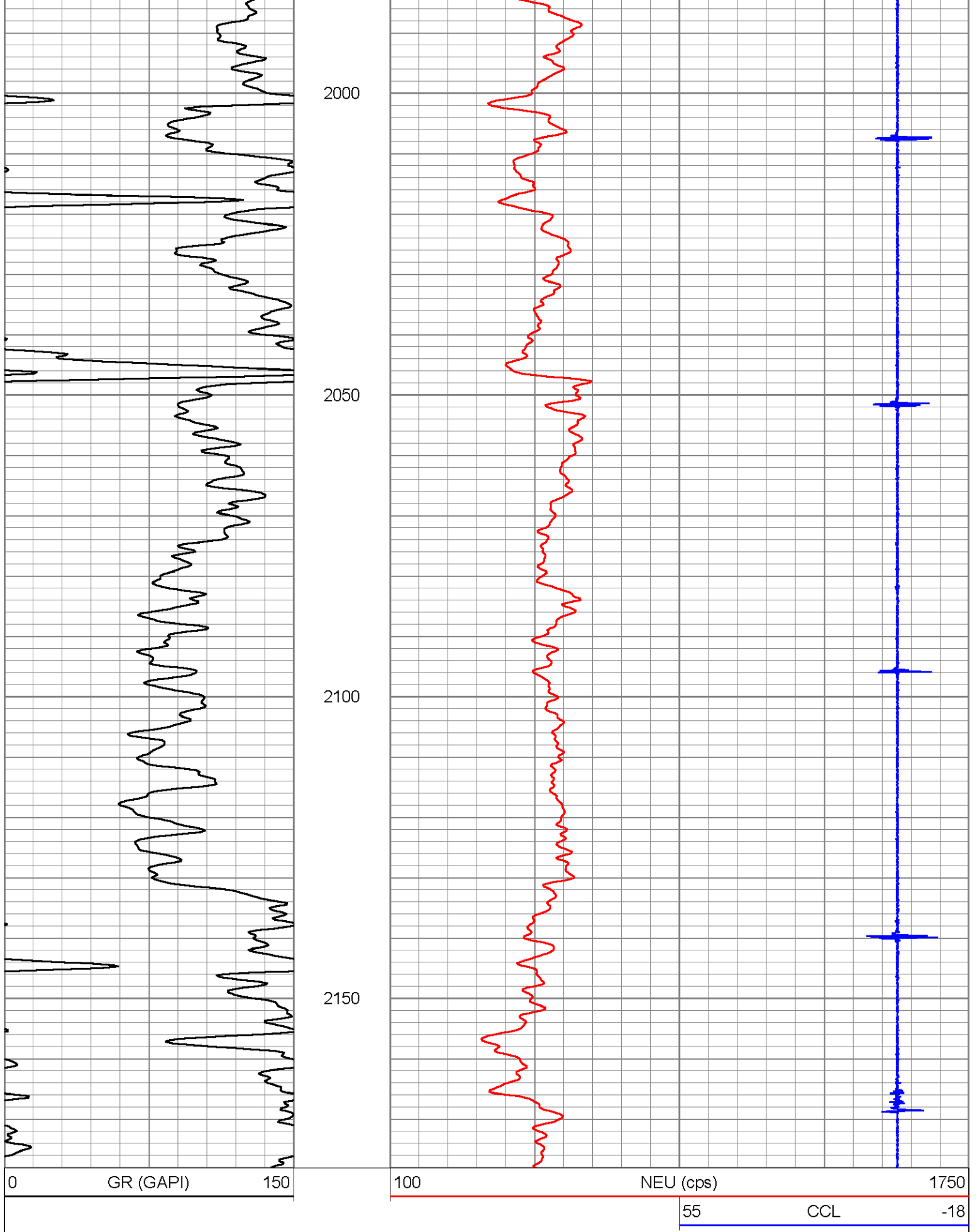
CCL




# Repeat Section

Database File barnard-austin-horst1.db  
 Dataset Pathname gr/pass2  
 Presentation Format gr-n-ccl  
 Dataset Creation Thu Aug 15 09:07:26 2019  
 Charted by Depth in Feet scaled 1:240





Sensor	Offset (ft)	Schematic	Description	Length (ft)	O.D. (in)	Weight (lb)
						

			CHD-STNDRD Standard Cable Head	1.00	1.44	1.00
GR	7.73					
			GR-pgr1 (pgr01) pengogrbig	4.13	3.13	30.00
CCL	3.53		CCL-PCCL (PC1) PENGOCCL	1.56	3.13	10.00
NEU	1.29		NEU-PENGO1 (PN1) PENGOBIG	2.75	3.13	20.00

Dataset: barnard-austin-horst1.db: field/well/grn/pass3  
 Total length: 9.44 ft  
 Total weight: 61.00 lb  
 O.D.: 3.13 in