

**COMPENSATED  
DENSITY/NEUTRON  
PE LOG**

Company VESS OIL CORPORATION  
Well OSWALD, ED B. #11  
Field FAIRPORT  
County RUSSELL  
State KANSAS

Company VESS OIL CORPORATION  
Well OSWALD, ED B. #11  
Field FAIRPORT  
County RUSSELL State KANSAS

Location: API #: 15-167-24096-0000  
1980' FSL & 660' FWL  
Permanent Datum GROUND LEVEL Elevation 1844  
Log Measured From KELLY BUSHING 5' A.G.L  
Drilling Measured From KELLY BUSHING  
Elevation  
K.B. 1849  
D.F. 1847  
G.L. 1844

Date	10/15/19
Run Number	TWO
Depth Driller	3254
Depth Logger	3253
Bottom Logged Interval	3251
Top Log Interval	2200
Casing Driller	8 5/8" @ 346'
Casing Logger	345'
Bit Size	7 7/8
Type Fluid in Hole	CHEMICAL MUD
Density / Viscosity	8.9/64
pH / Fluid Loss	8.0/10.8
Source of Sample	FLOWLINE
Rm @ Meas. Temp	1.30 @ 76F
Rmf @ Meas. Temp	0.97 @ 76F
Rmc @ Meas. Temp	1.56 @ 76F
Source of Rmf / Rmc	MEASUREMENT
Rm @ BHT	0.90 @ 109F
Time Circulation Stopped	2 HOURS
Time Logger on Bottom	////
Maximum Recorded Temperature	109F
Equipment Number	3802
Location	HAYS, KANSAS
Recorded By	JASON CAPPELLUCCI
Witnessed By	ROGER MARTIN

<<< Fold Here >>>

All interpretations are opinions based on inferences from electrical or other measurements and we cannot and do not guarantee the accuracy or correctness of any interpretation, and we shall not, except in the case of gross or willful negligence on our part, be liable or responsible for any loss, costs, damages, or expenses incurred or sustained by anyone resulting from any interpretation made by any of our officers, agents or employees. These interpretations are also subject to our general terms and conditions set out in our current Price Schedule.

**Comments**

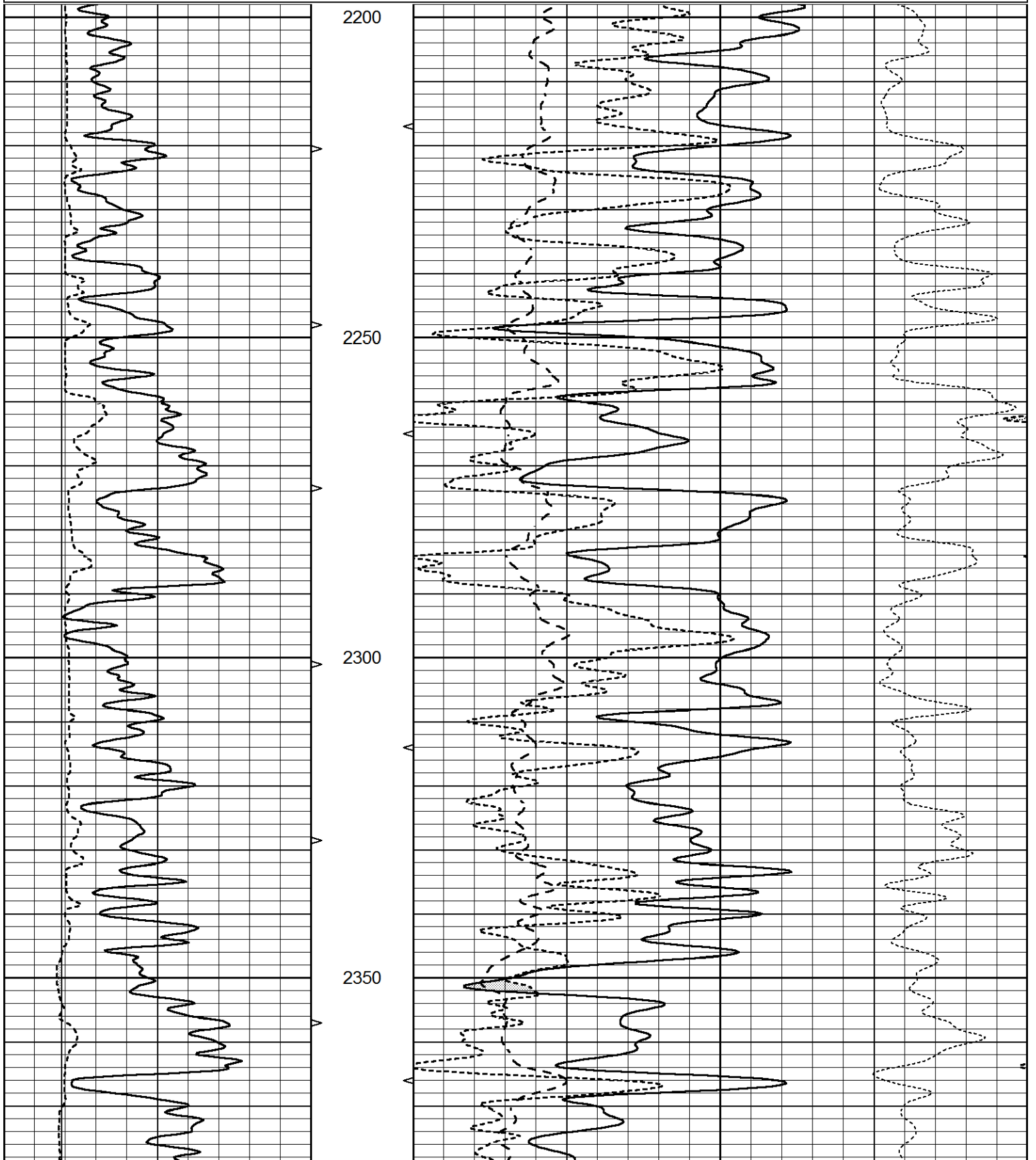
THANK YOU FOR USING ELI WIRELINE SERVICES, HAYS, KS. ( 785 ) 628-6395  
DIRECTIONS  
GORHAM, KS, - 9 NORTH ON FAIRPORT BLACKTOP TO BEATTY RD.  
1/4 WEST TO CURVE - KEEP WEST TO NEXT ROAD NORTH - 1/4 NORTH - WEST INTO

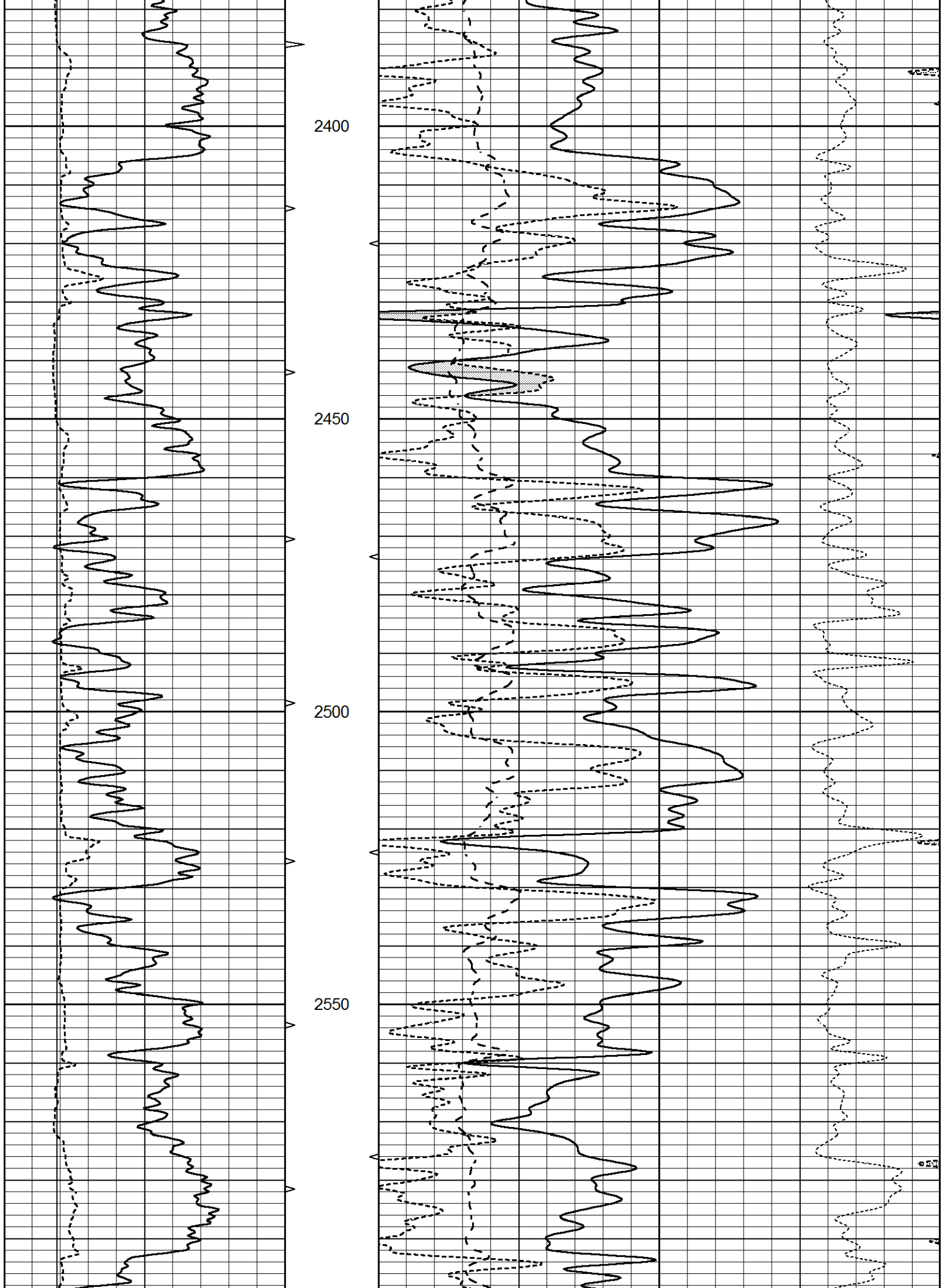


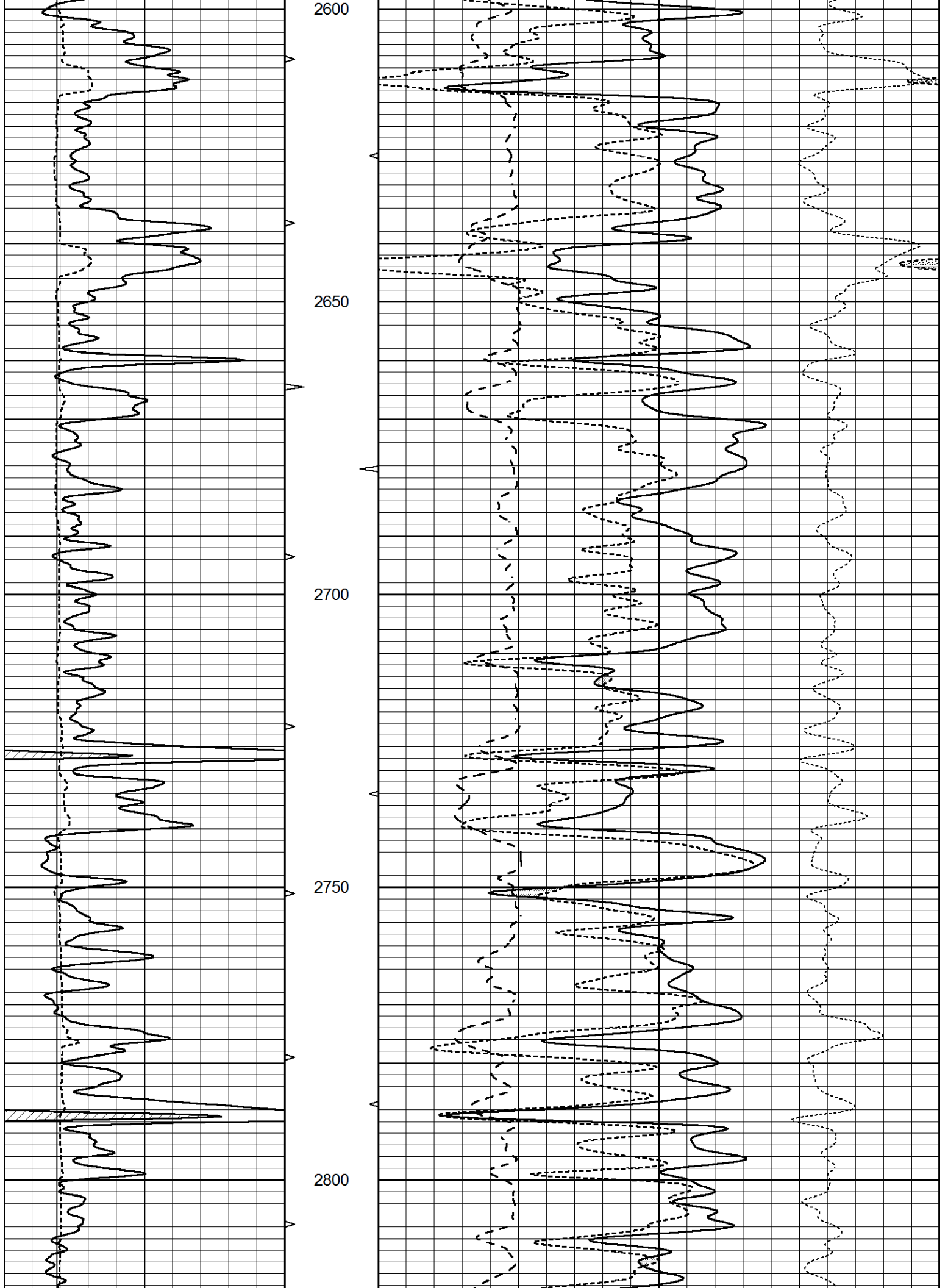
**MAIN SECTION**

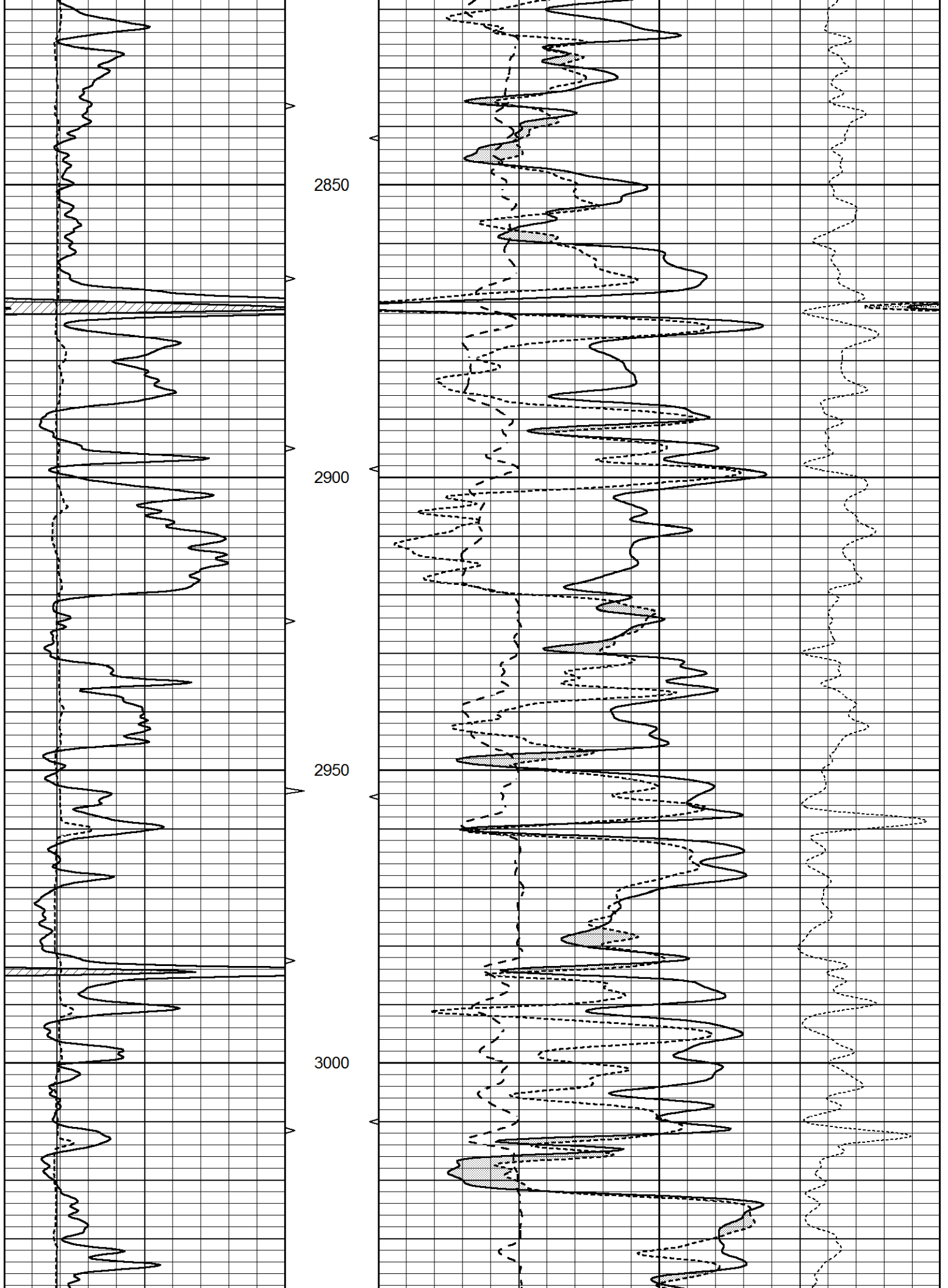
Database File 3998ddn8.db  
 Dataset Pathname pass6.1  
 Presentation Format \_ldt\_neu  
 Dataset Creation Wed Oct 16 00:22:47 2019  
 Charted by Depth in Feet scaled 1:240

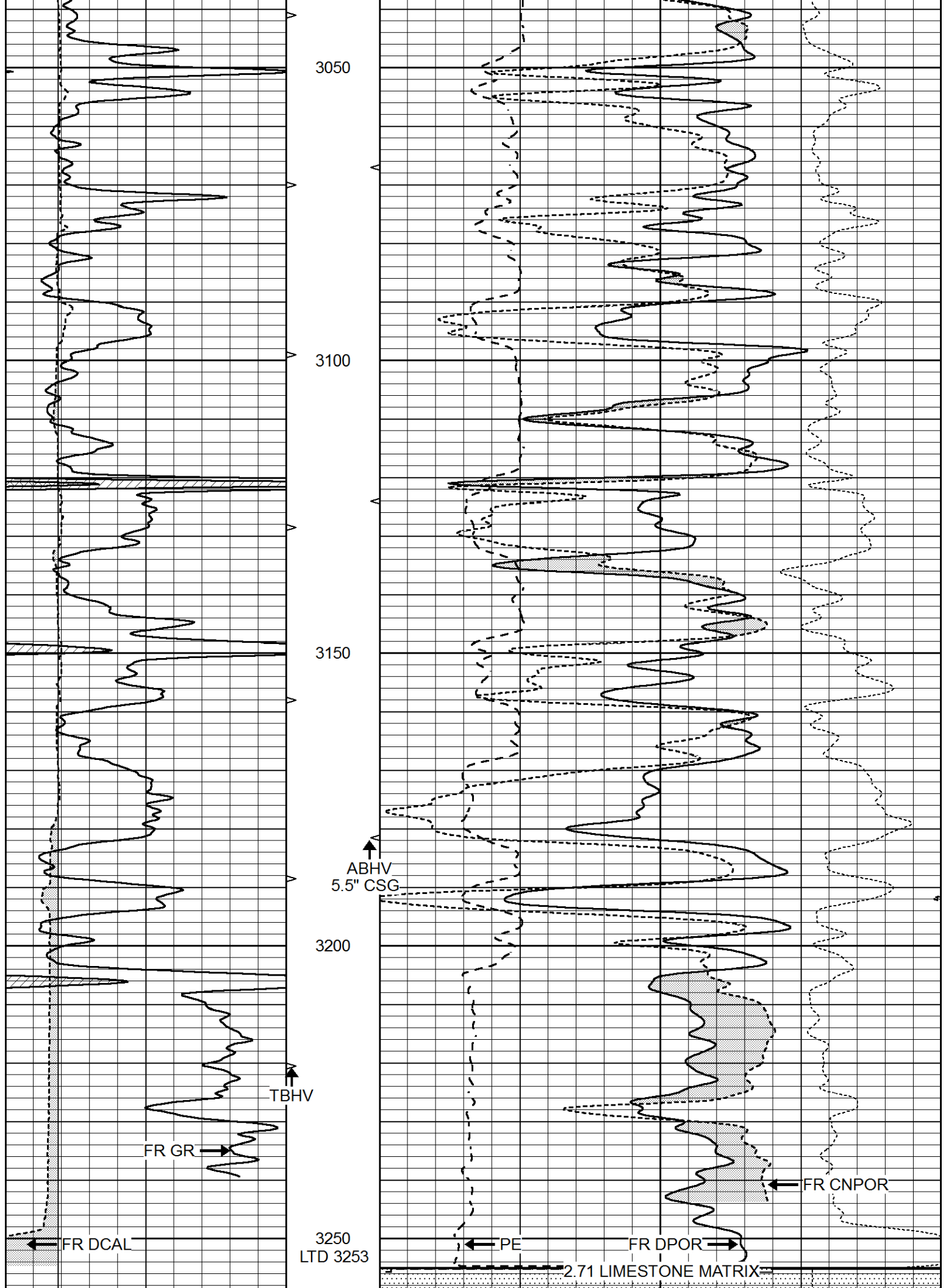
0	GAMMA RAY (GAPI)	150	ABHV	30	COMPENSATED DENSITY (pu)		-10
6	CALIPER (in)	16	10 (ft3)	0	COMPENSATED NEUTRON (pu)		-10
			TBHV	0	PE	10	-0.25 CORRECTION (g/cc) 0.25
			0 (ft3)	10			











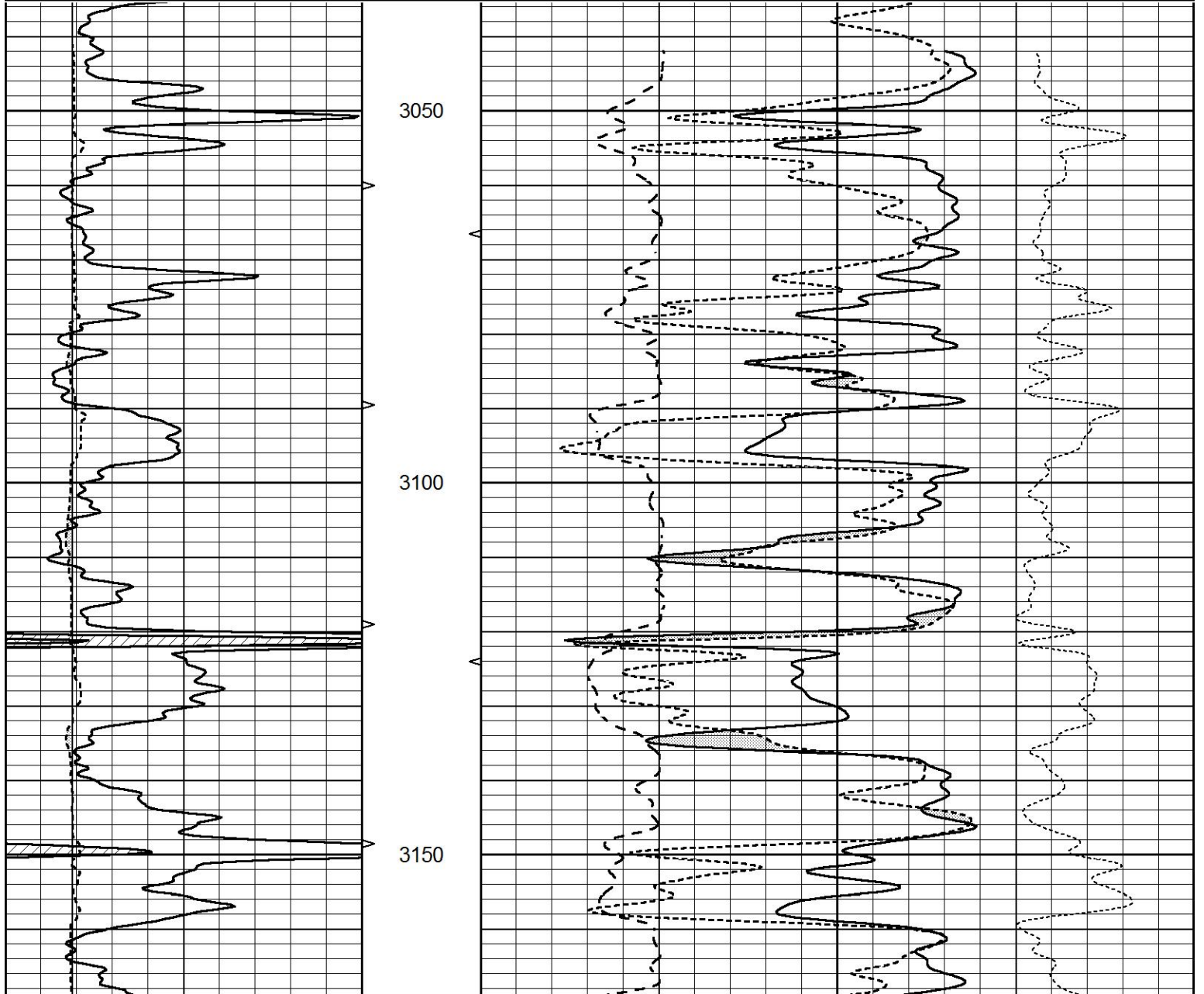
0	GAMMA RAY (GAPI)	150	ABHV	30	COMPENSATED DENSITY (pu)	-10
6	CALIPER (in)	16	10 (ft3) 0	30	COMPENSATED NEUTRON (pu)	-10
			TBHV	0	PE	10 -0.25 CORRECTION (g/cc) 0.25
			0 (ft3) 10			

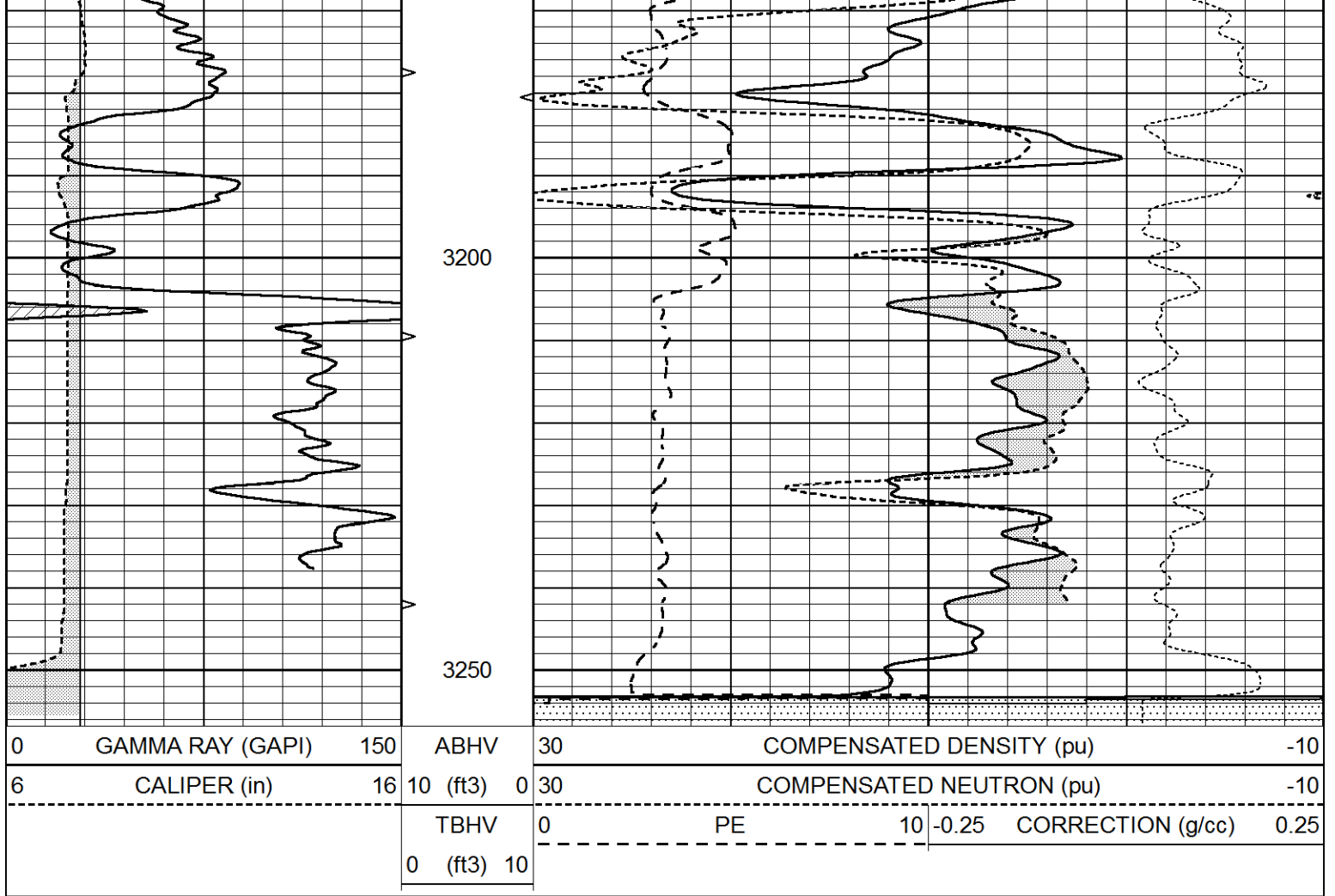


# REPEAT SECTION

Database File 3998ddn8.db  
 Dataset Pathname pass5.1  
 Presentation Format \_ldt\_neu  
 Dataset Creation Wed Oct 16 00:21:26 2019  
 Charted by Depth in Feet scaled 1:240

0	GAMMA RAY (GAPI)	150	ABHV	30	COMPENSATED DENSITY (pu)	-10
6	CALIPER (in)	16	10 (ft3) 0	30	COMPENSATED NEUTRON (pu)	-10
			TBHV	0	PE	10 -0.25 CORRECTION (g/cc) 0.25
			0 (ft3) 10			





### Calibration Report

Database File 3998ddn8.db  
 Dataset Pathname pass5.1  
 Dataset Creation Wed Oct 16 00:21:26 2019

### Litho Density Calibration Report

Serial: 140704  
 Model: V4\_10P  
 Source Number: 74GBq-19

#### Master Calibration

Performed: Fri Jan 18 10:53:52 2019

	Background	Aluminum	Magnesium	
Window 1	563.20	5403.39	24190.50	cps
Window 2	44.78	1243.51	6049.93	cps
Window 4	247.62	1222.40	5239.60	cps
Window 5	568.17	8975.27	17094.80	cps
Window 6	44.48	1484.88	2922.28	cps
Window 8	270.82	2877.34	5377.89	cps
Bulk Density	-	2.6020	1.6830	g/cc
Pe	-	3.0000	2.5070	b/e

LS Alpha: : -1.8641      SS Alpha: : -0.7692      LS CPE: : 1.1004  
 LS Beta: : 127931.7253      SS Beta: : 20075.8142      SS CPE: : 1.5209

#### Before Survey Background Counts Verification

Performed: Wed Dec 31 18:00:00 1969

Window 1 0.00 cps  
 Window 2 0.00 cps



Window 2	0.00	cps
Window 4	0.00	cps
Window 5	0.00	cps
Window 6	0.00	cps
Window 8	0.00	cps

After Survey Background Counts Verification

Performed: Wed Dec 31 18:00:00 1969

Window 1	0.00	cps
Window 2	0.00	cps
Window 4	0.00	cps
Window 5	0.00	cps
Window 6	0.00	cps
Window 8	0.00	cps

Lithodensity Caliper Calibration

Performed: Fri Jan 18 10:53:52 2019

Results		Readings		References (in)		Gain	Offset
Low	High	Low	High				
3586.3	5529.9	8.0	16.0			0.0	-6.8

Before Survey Caliper Verification

Performed:

	Reference	Reading
Caliper (in)	_____	_____

After Survey Caliper Verification

Performed:

Compensated Neutron Calibration Report

Serial Number: 080621PMC  
Tool Model: NABORS

PRE-SURVEY VERIFICATION

Detector	Readings	Measured	Target
Short Space	cps		
Long Space	cps	pu	pu

POST-SURVEY VERIFICATION

Detector	Readings	Measured	Target
Short Space	cps		
Long Space	cps	pu	pu

Gamma Ray Calibration Report

Serial Number: 7  
Tool Model: Probe1  
Performed: Tue Feb 19 11:45:10 2019

Calibrator Value: 1.0 GAPI

Background Reading: 0.0 cps  
Calibrator Reading: 1.0 cps

Sensitivity: 0.4300 GAPI/cps