



DUAL INDUCTION LOG

Company CASTLE RESOURCES, INC.
 Well GEORG-LEGLEITER#1
 Field WILDCAT
 County RUSH
 State KANSAS

Company CASTLE RESOURCES, INC.
 Well GEORG-LEGLEITER#1
 Field WILDCAT
 County RUSH State KANSAS

Location: API # : 15-165-22170-00-00
 1320' FNL & 2275' FWL
 SEC 9 TWP 17S RGE 19W
 Permanent Datum GROUND LEVEL Elevation 2124
 Log Measured From KELLY BUSHING 5' A.G.L.
 Drilling Measured From KELLY BUSHING
 Other Services CDL/CNL/MEL
 Elevation K.B. 2129
 D.F. 2127
 G.L. 2129

Date	08/21/19
Run Number	ONE
Depth Driller	3940
Depth Logger	3940
Bottom Logged Interval	3939
Top Log Interval	00
Casing Driller	8 5/8" @ 231
Casing Logger	231
Bit Size	7 7/8"
Type Fluid in Hole	CHEMICAL MUD
Density / Viscosity	9.2/47
pH / Fluid Loss	10.8/10.8
Source of Sample	FLOWLINE
Rm @ Meas. Temp	1.3@77
Rmt @ Meas. Temp	.98@77
Rmc @ Meas. Temp	1.2@77
Source of Rmf / Rmc	MEASURED
Rm @ BHT	.87@115
Time Circulation Stopped	2 HOURS
Time Logger on Bottom	///
Maximum Recorded Temperature	115F
Equipment Number	4010
Location	HAYS, KANSAS
Recorded By	GUS PFANENSTIEL
Witnessed By	JERRY GREEN

<<< Fold Here >>>

All interpretations are opinions based on inferences from electrical or other measurements and we cannot and do not guarantee the accuracy or correctness of any interpretation, and we shall not, except in the case of gross or willful negligence on our part, be liable or responsible for any loss, costs, damages, or expenses incurred or sustained by anyone resulting from any interpretation made by any of our officers, agents or employees. These interpretations are also subject to our general terms and conditions set out in our current Price Schedule.

Comments

THANK YOU FOR USING ELI WIRELINE, HAYS, KS. (785) 628-6395

DIRECTIONS
 1 MILE SOUTH OF LIEBENTHAL, WEST TO 180 TH RD,
 SOUTH 3 1/4 MILE, EAST INTO.



MAIN PASS

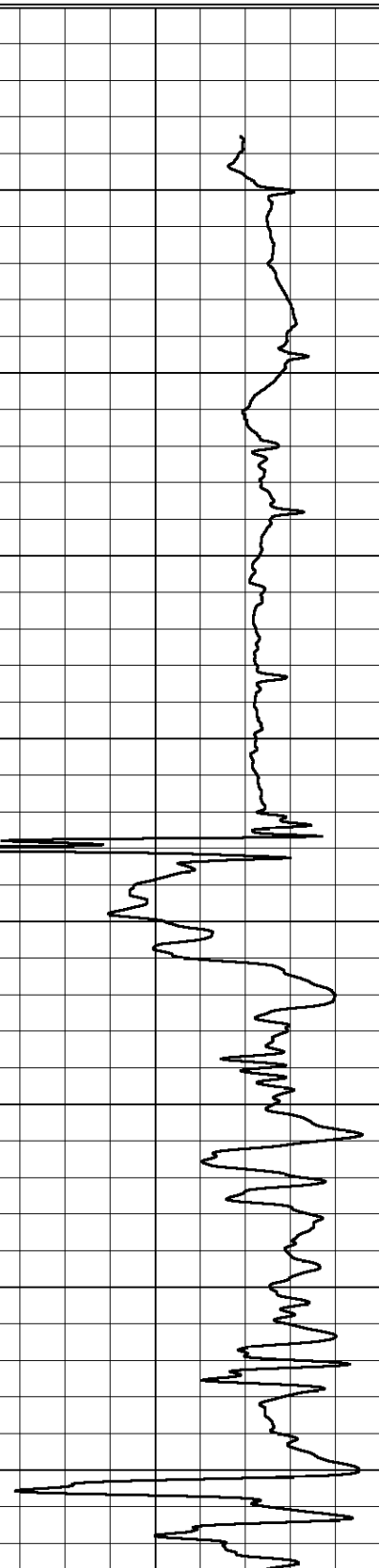
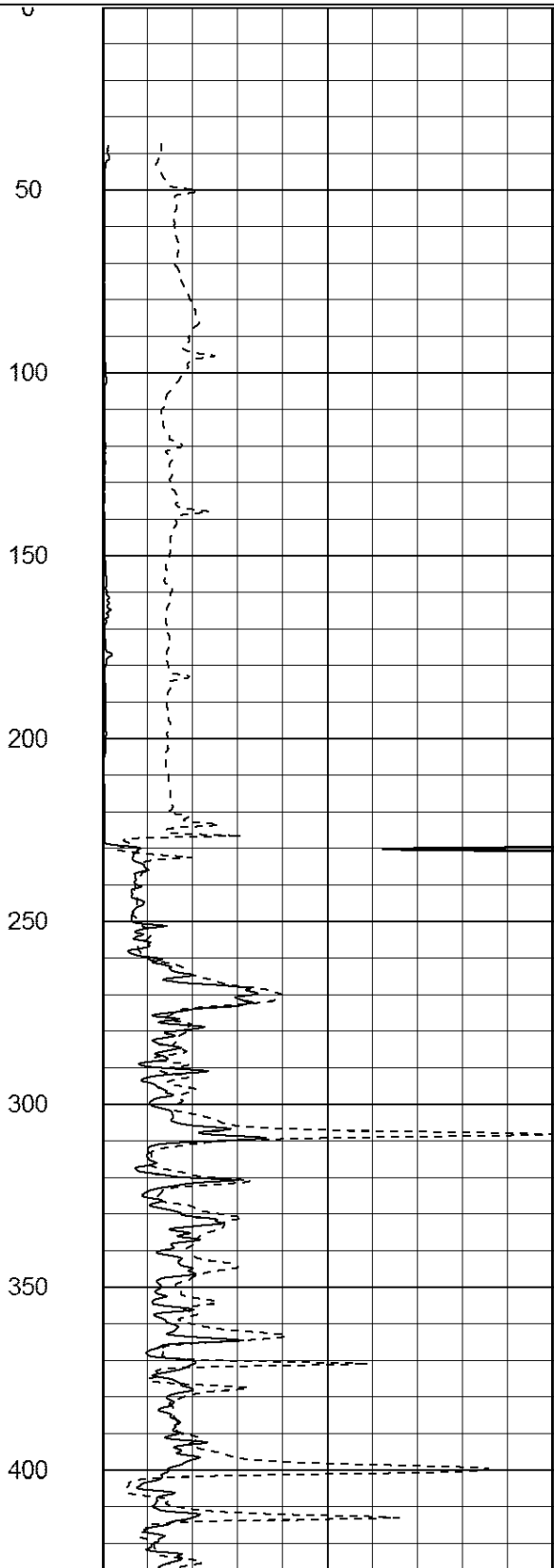
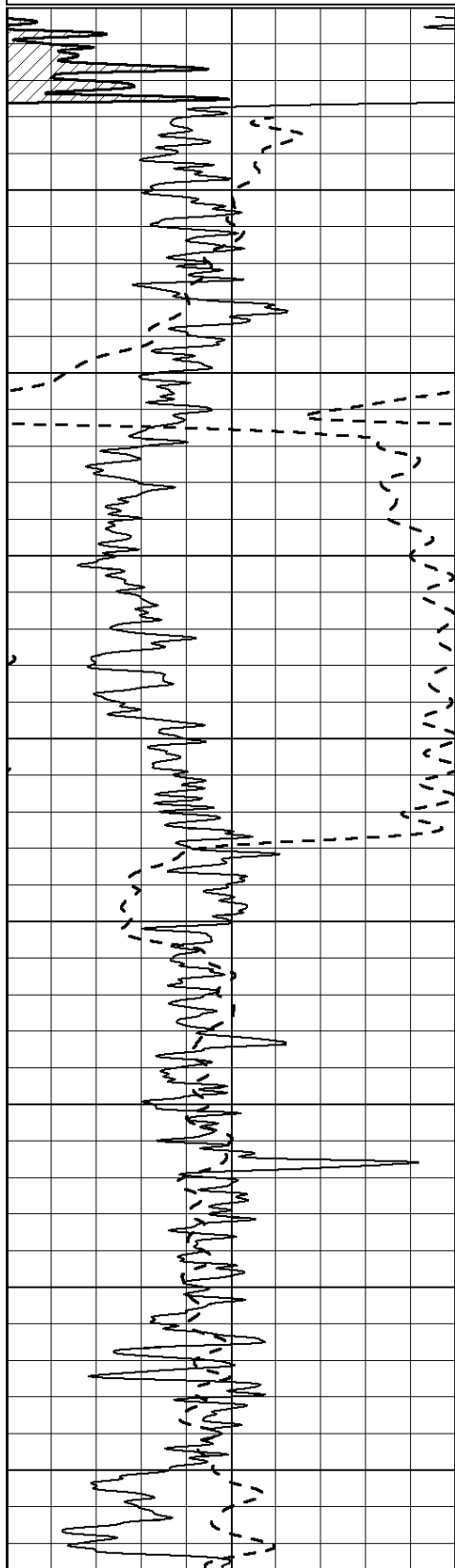
Database File: 4086ddn.db
 Dataset Pathname: pass3.1
 Presentation Format: _dil2
 Dataset Creation: Wed Aug 21 09:20:56 2019 by Calc Open-Cased 090629
 Charted by: Depth in Feet scaled 1:600

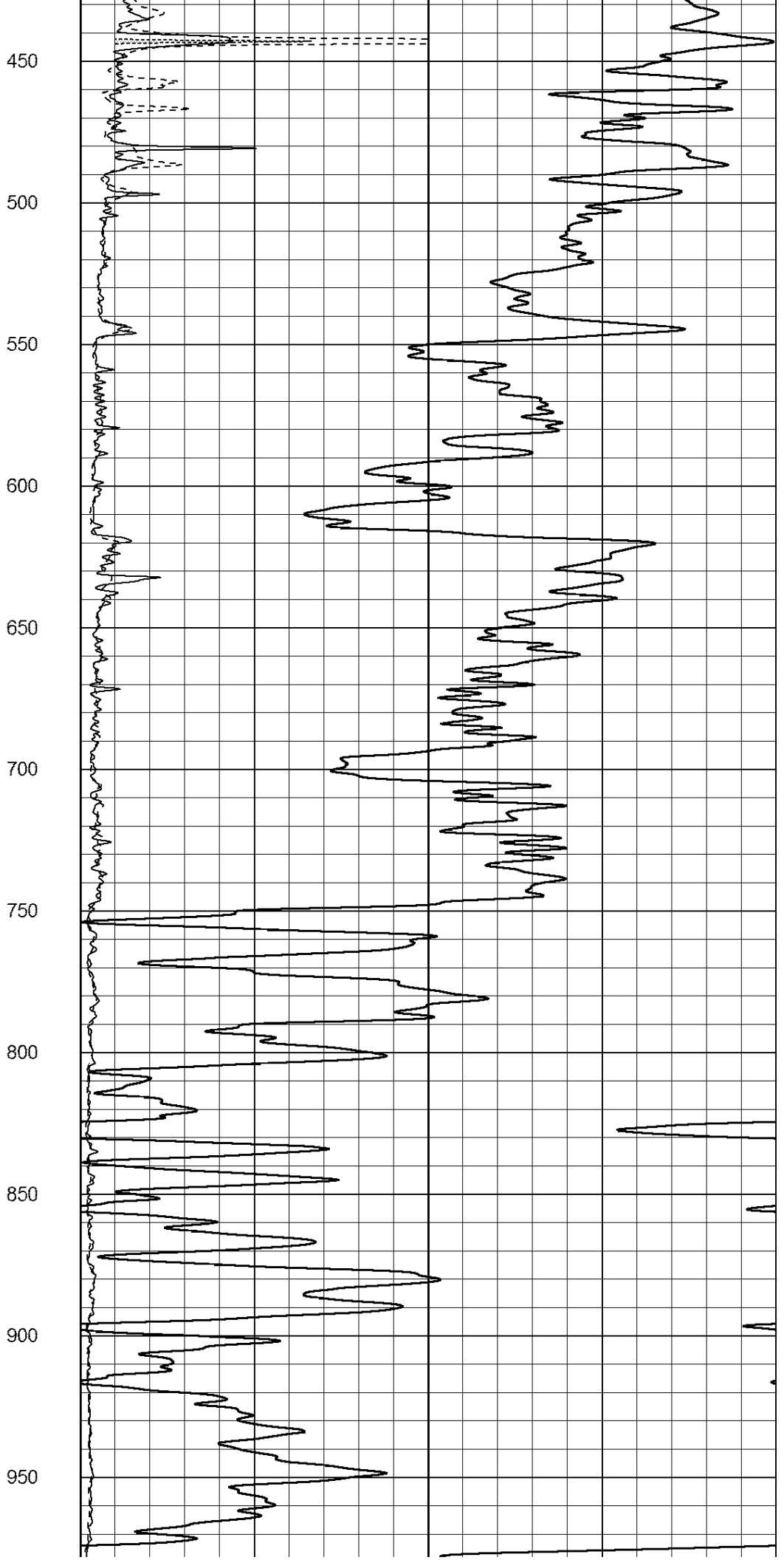
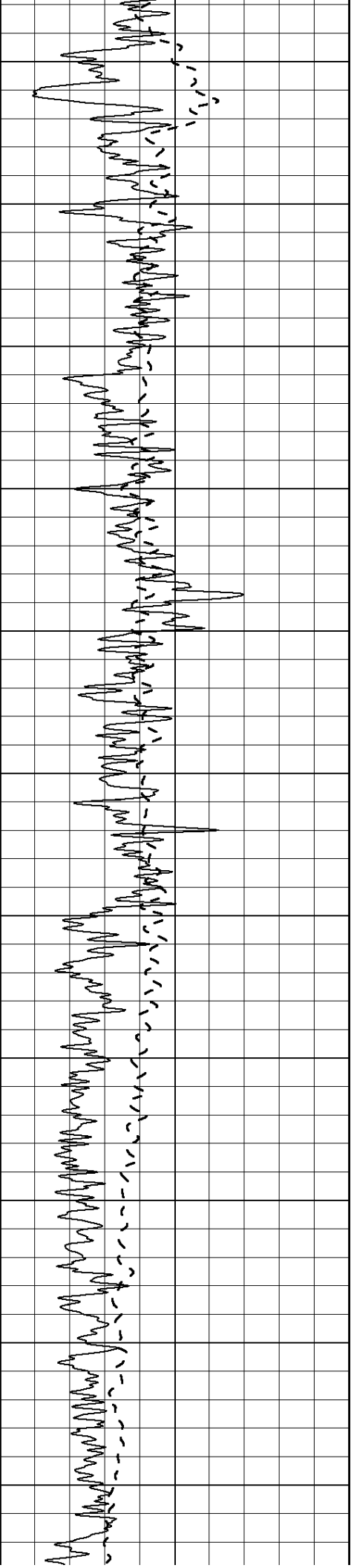
0	Gamma Ray (GAPI)	150
-100	SP (mV)	100

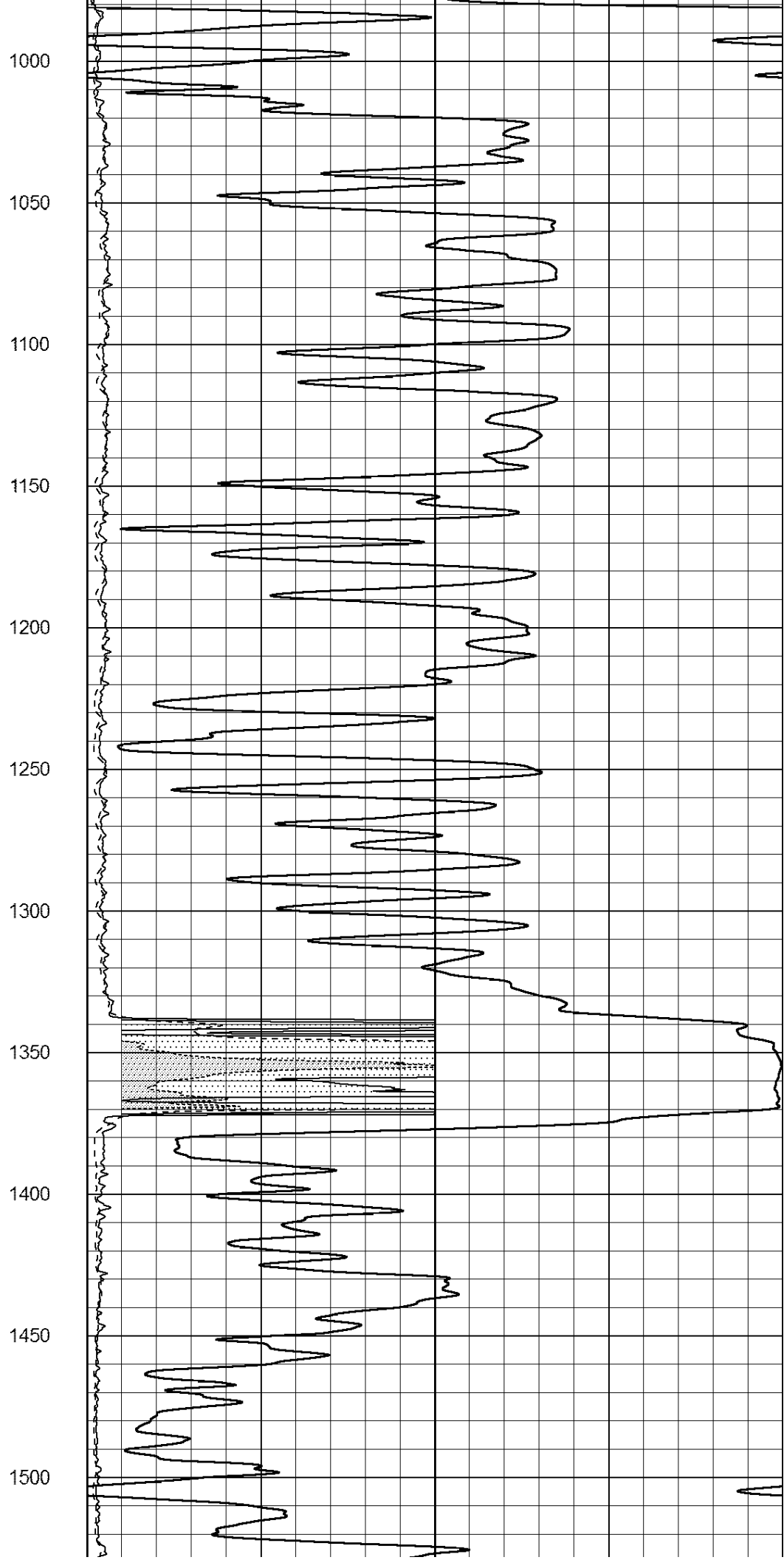
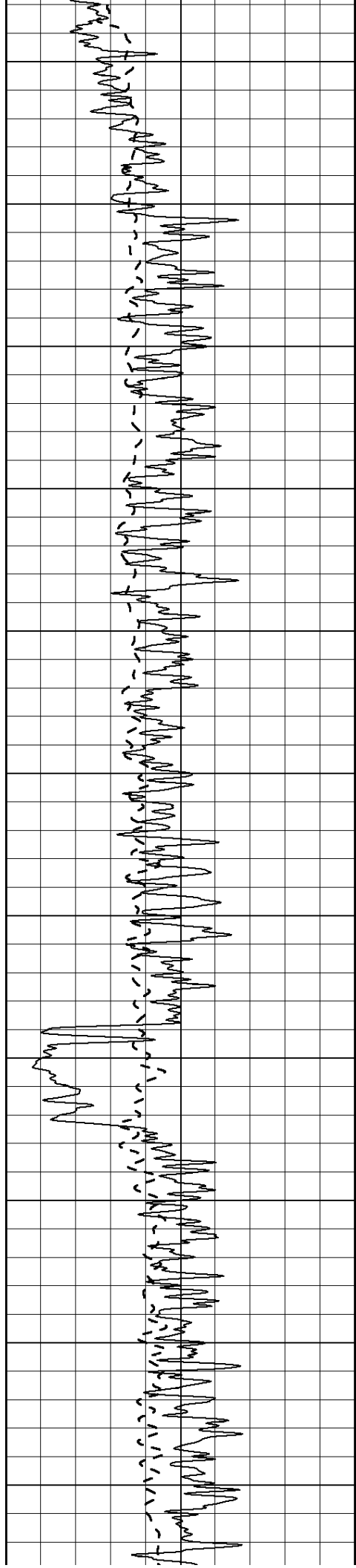
0	RLL3 (Ohm-m)	50
0	RILD (Ohm-m)	50

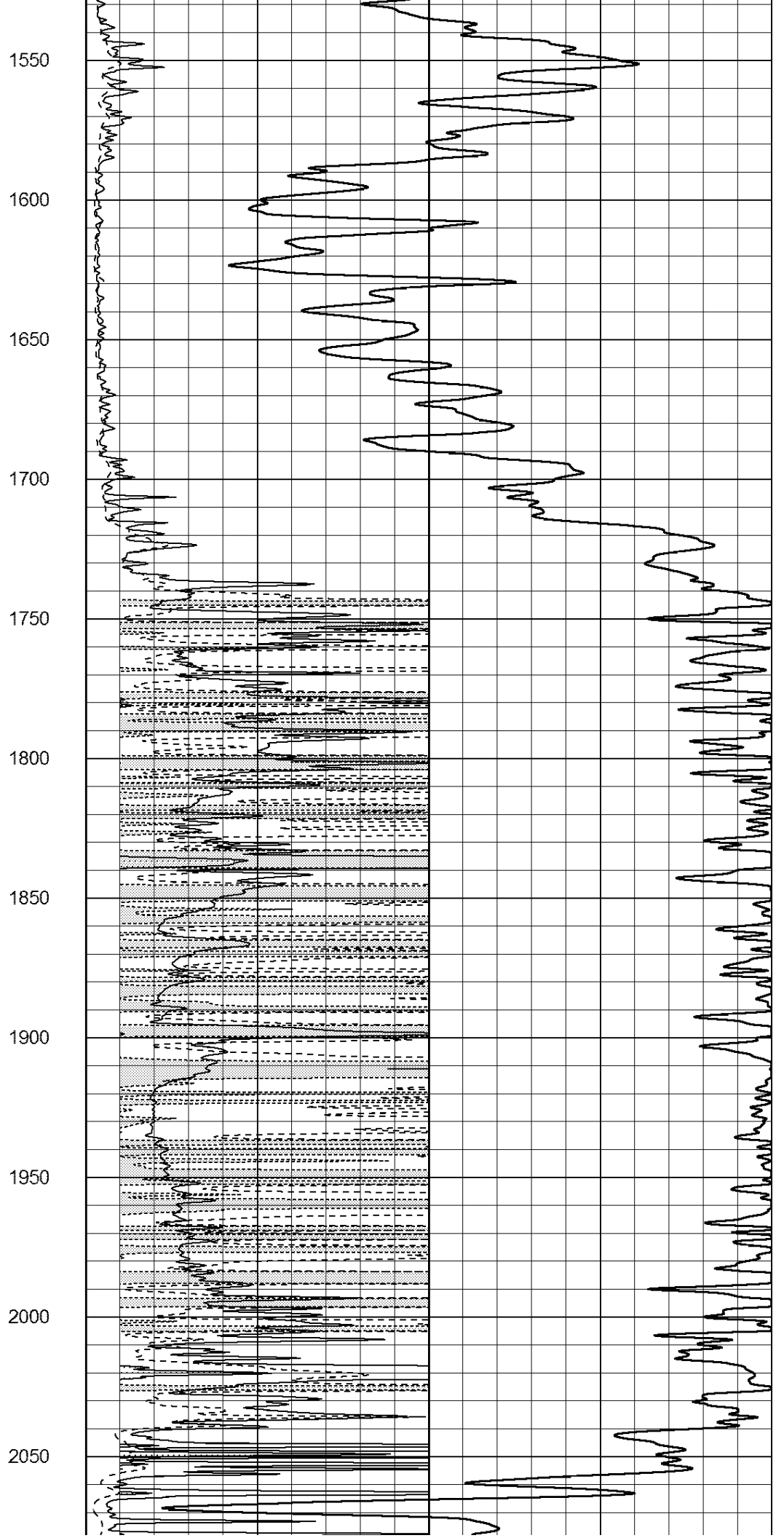
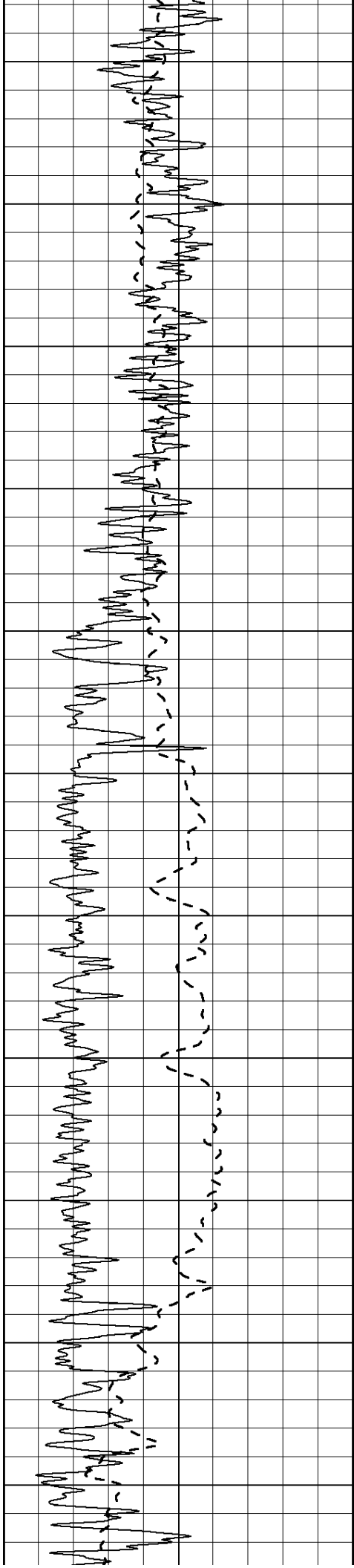
1000	CILD (mmho/m)	0
------	---------------	---

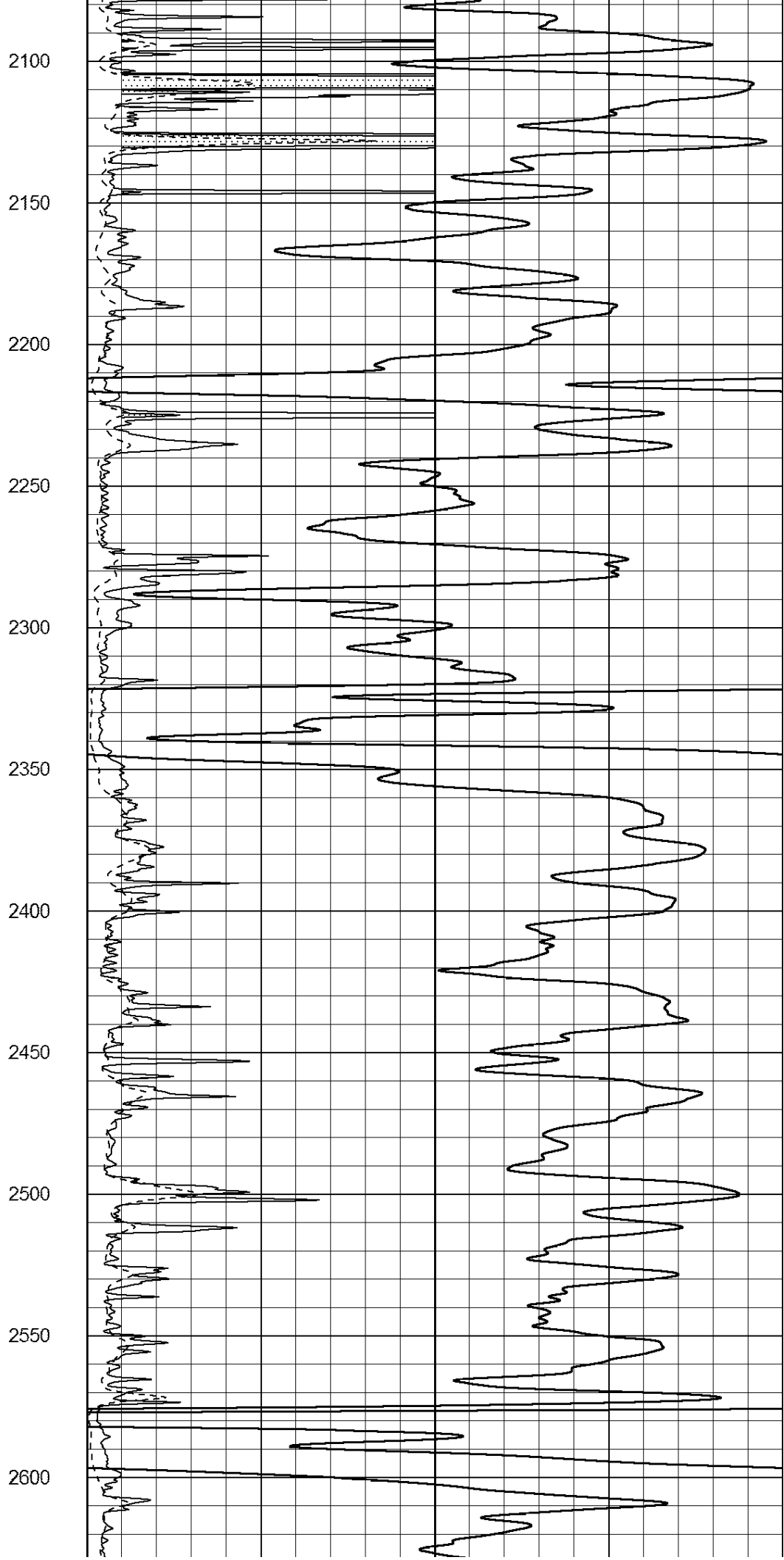
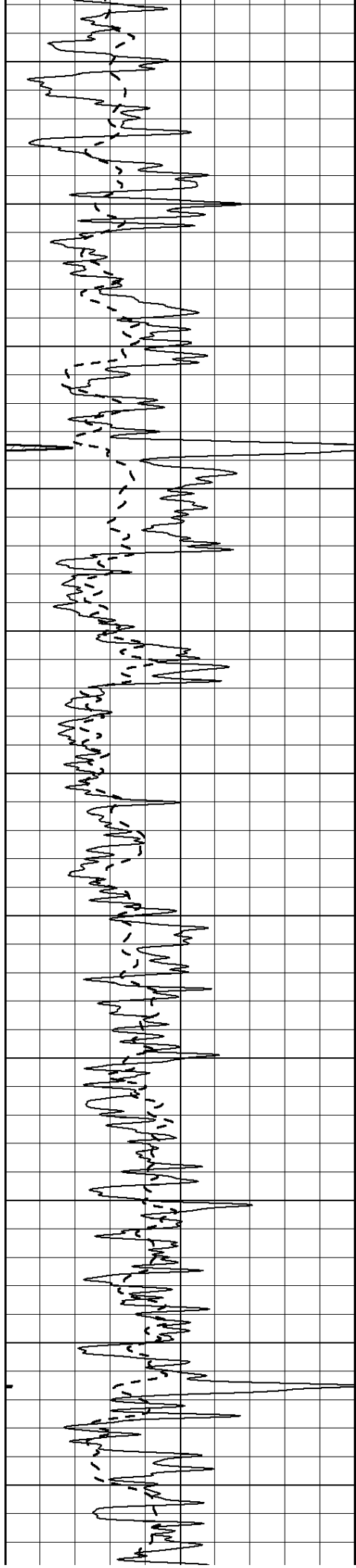
50	RILD X10 (Ohm-m)	500
50	RLL3 X10 (Ohm-m)	500

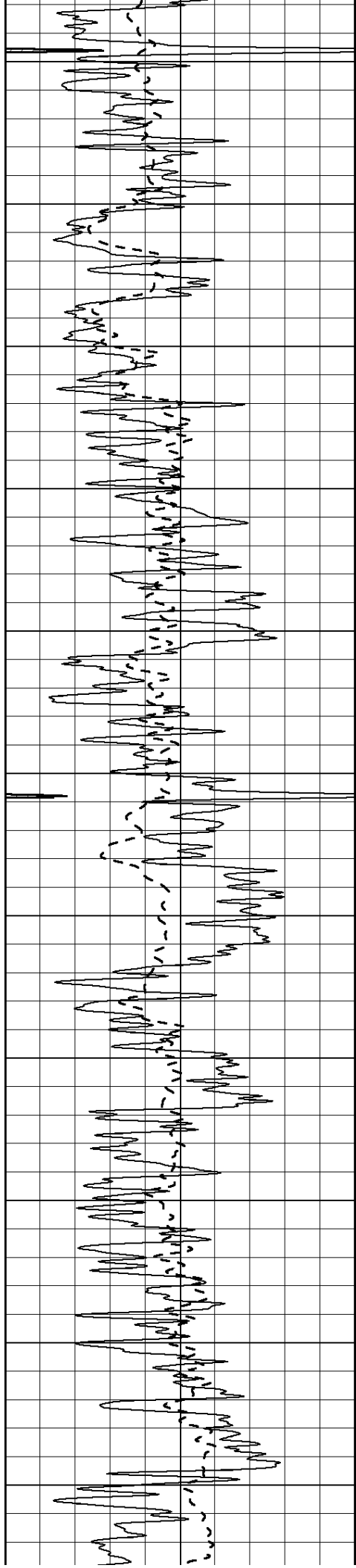












2650

2700

2750

2800

2850

2900

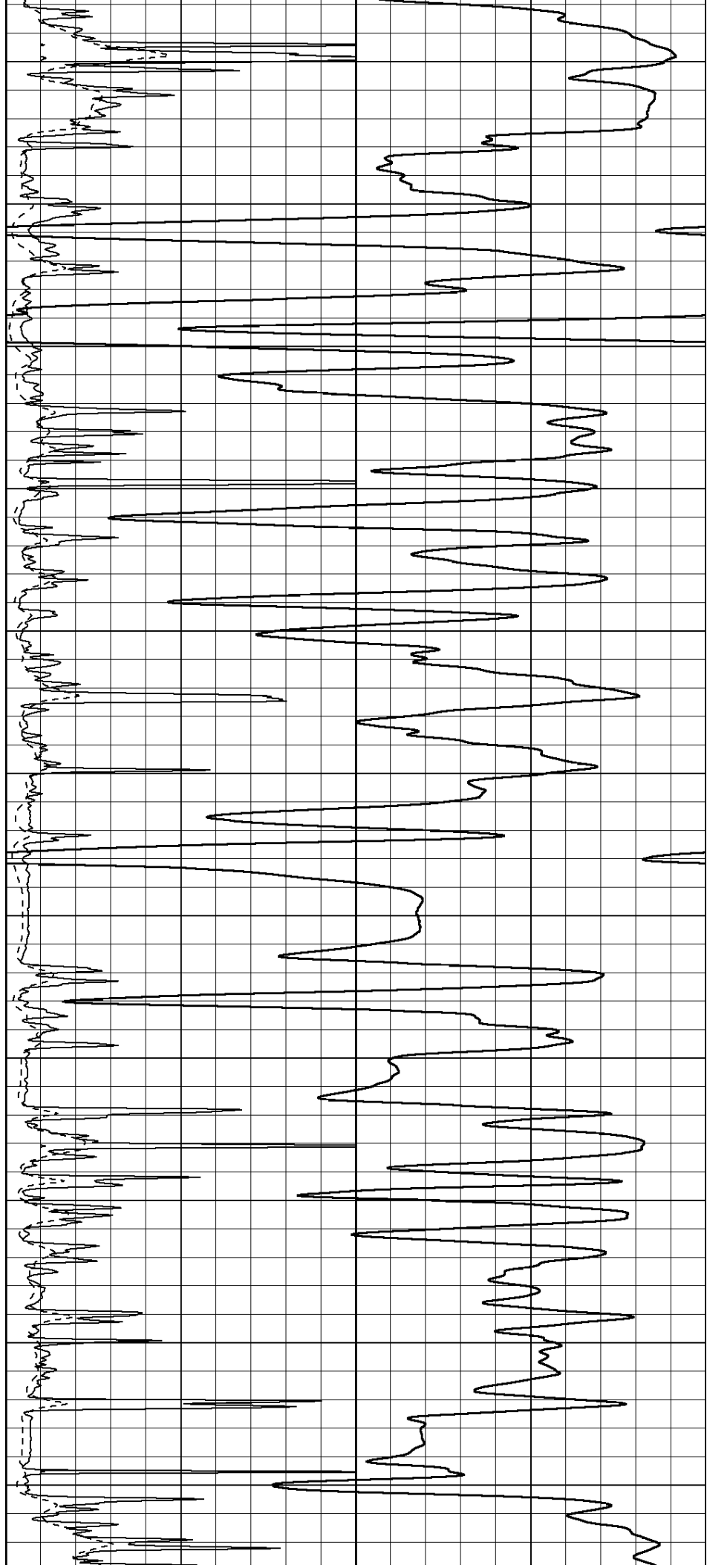
2950

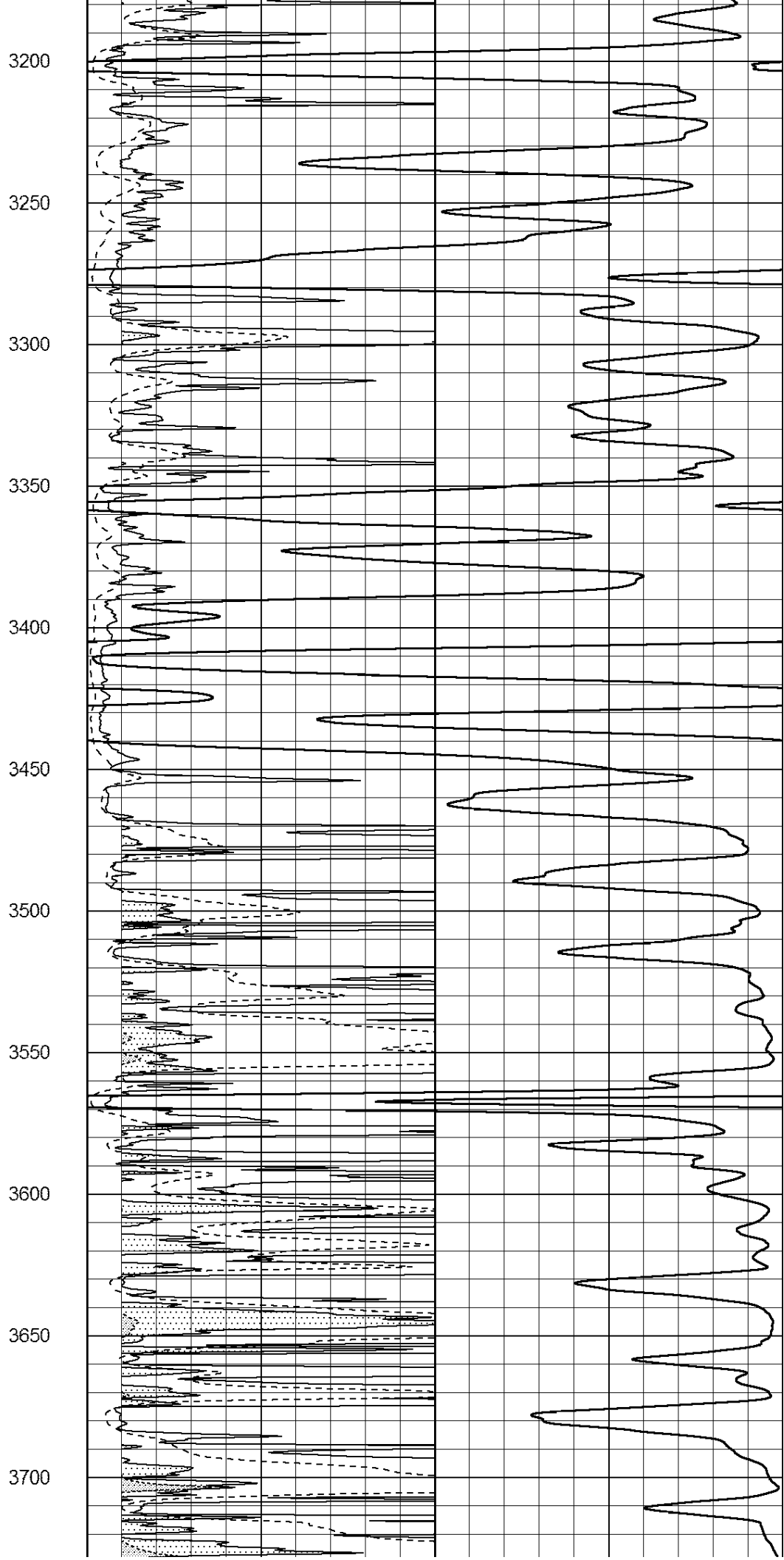
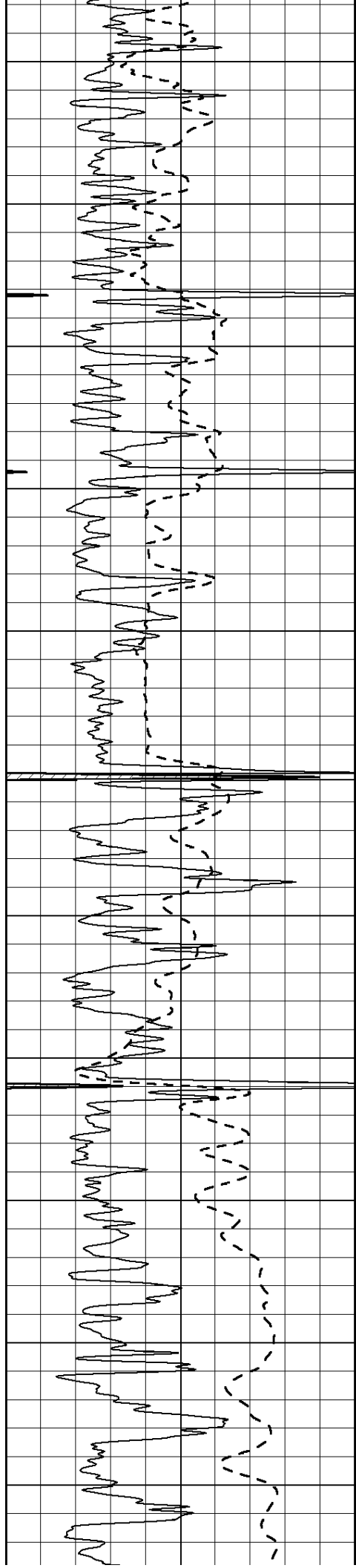
3000

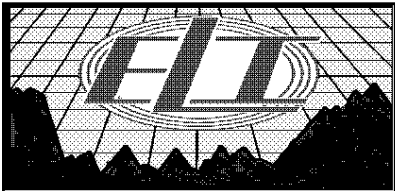
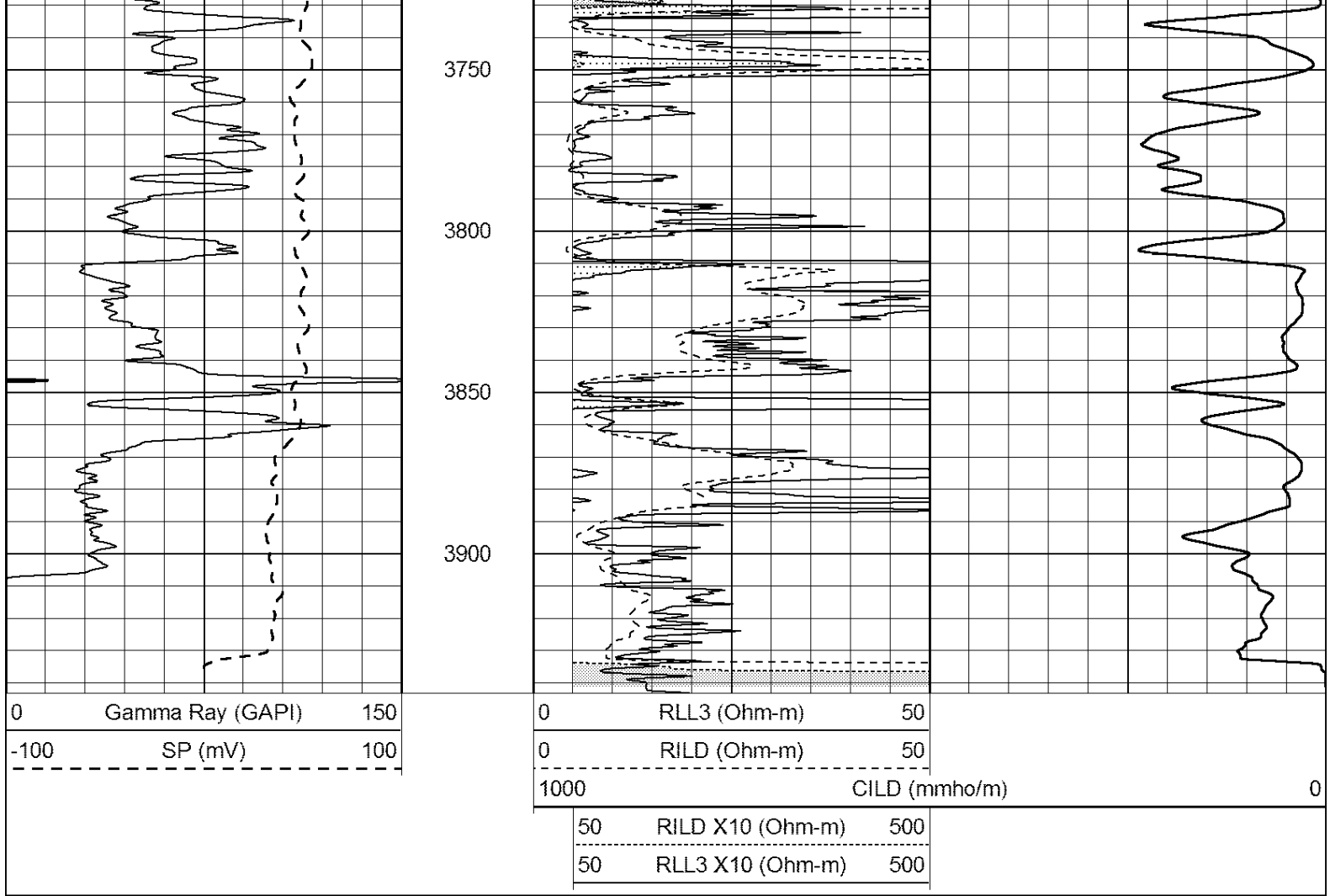
3050

3100

3150





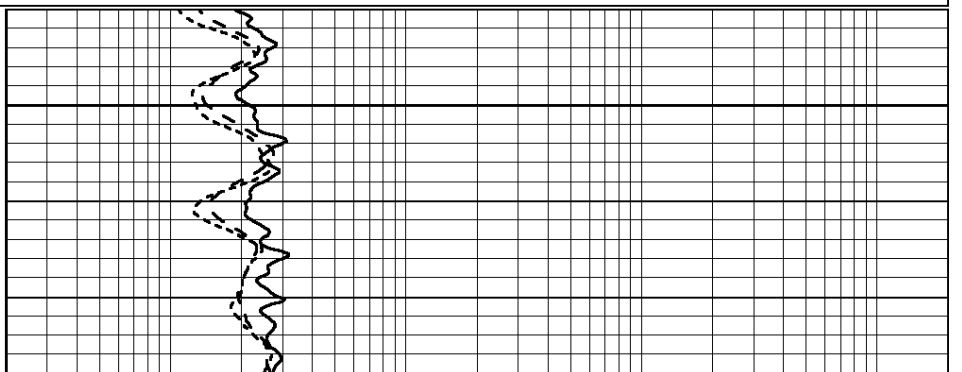
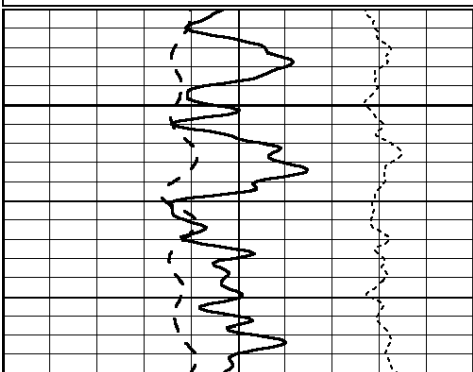


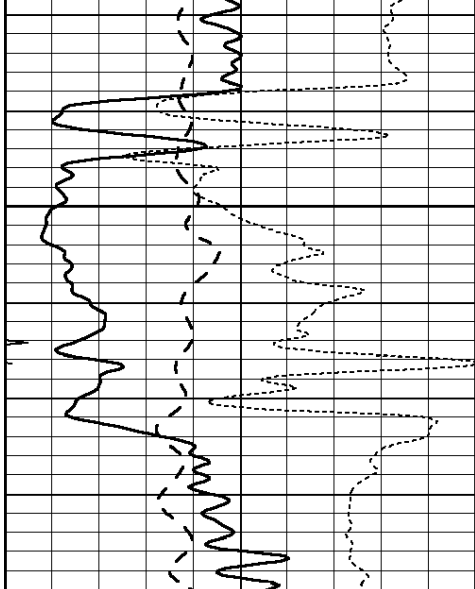
MAIN PASS

Database File: 4086ddn.db
 Dataset Pathname: pass3.1
 Presentation Format: _dil
 Dataset Creation: Wed Aug 21 09:20:56 2019 by Calc Open-Cased 090629
 Charted by: Depth in Feet scaled 1:240

0	GAMMA RAY (GAPI)	150
-100	SP (mV)	100
-250	Rxo/Rt	50
0	MINMK	20

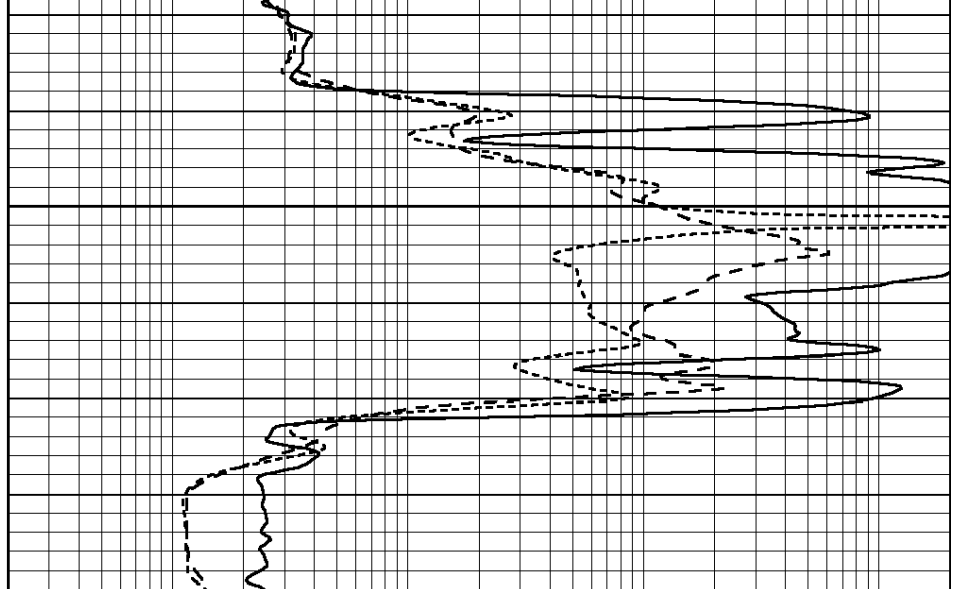
0.2	SHALLOW GUARD (Ohm-m)	2000
0.2	DEEP INDUCTION (Ohm-m)	2000
0.2	MEDIUM INDUCTION (Ohm-m)	2000



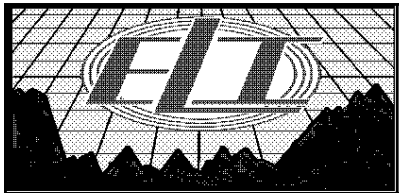


1350

0	GAMMA RAY (GAPI)	150
-100	SP (mV)	100
-250	Rxo/Rt	50
0	MINMK	20



0.2	SHALLOW GUARD (Ohm-m)	2000
0.2	DEEP INDUCTION (Ohm-m)	2000
0.2	MEDIUM INDUCTION (Ohm-m)	2000

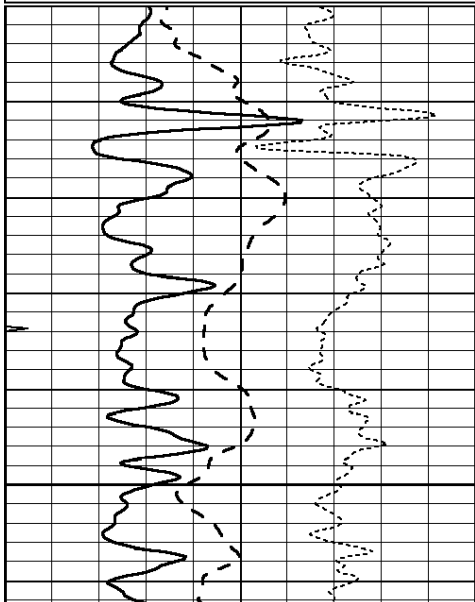


MAIN PASS

Database File: 4086ddn.db
 Dataset Pathname: pass3.1
 Presentation Format: _dil
 Dataset Creation: Wed Aug 21 09:20:56 2019 by Calc Open-Cased 090629
 Charted by: Depth in Feet scaled 1:240

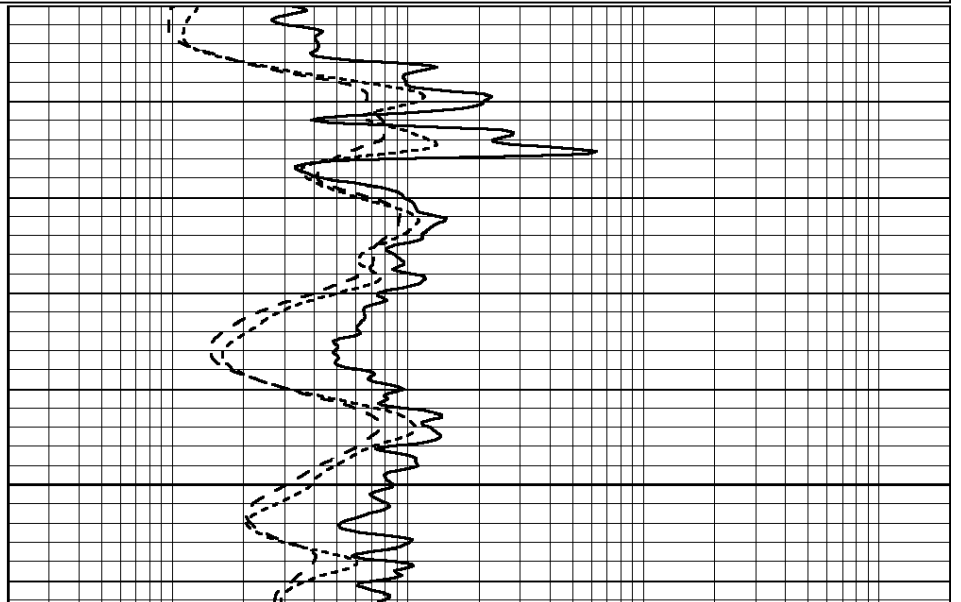
0	GAMMA RAY (GAPI)	150
-100	SP (mV)	100
-250	Rxo/Rt	50
0	MINMK	20

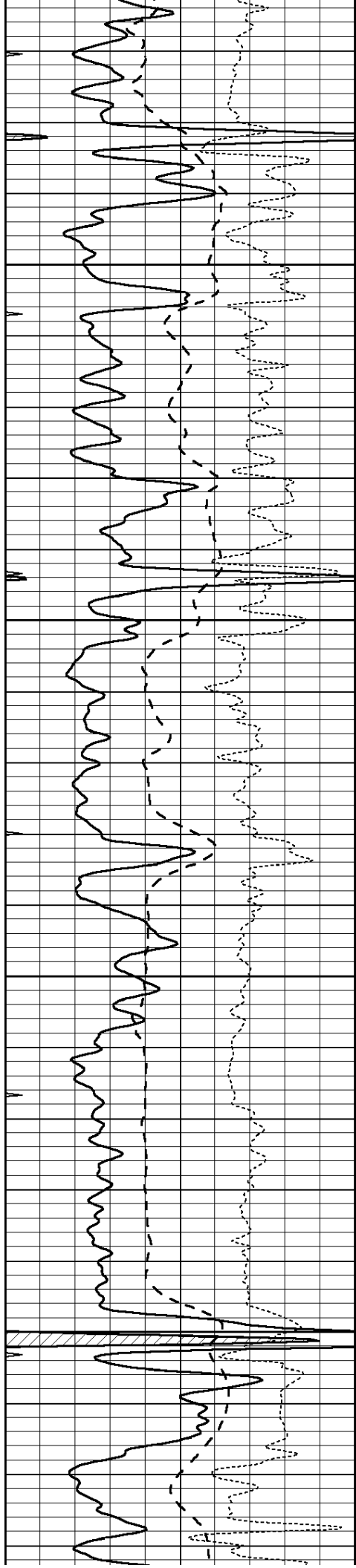
0.2	SHALLOW GUARD (Ohm-m)	2000
0.2	DEEP INDUCTION (Ohm-m)	2000
0.2	MEDIUM INDUCTION (Ohm-m)	2000



3200

3250



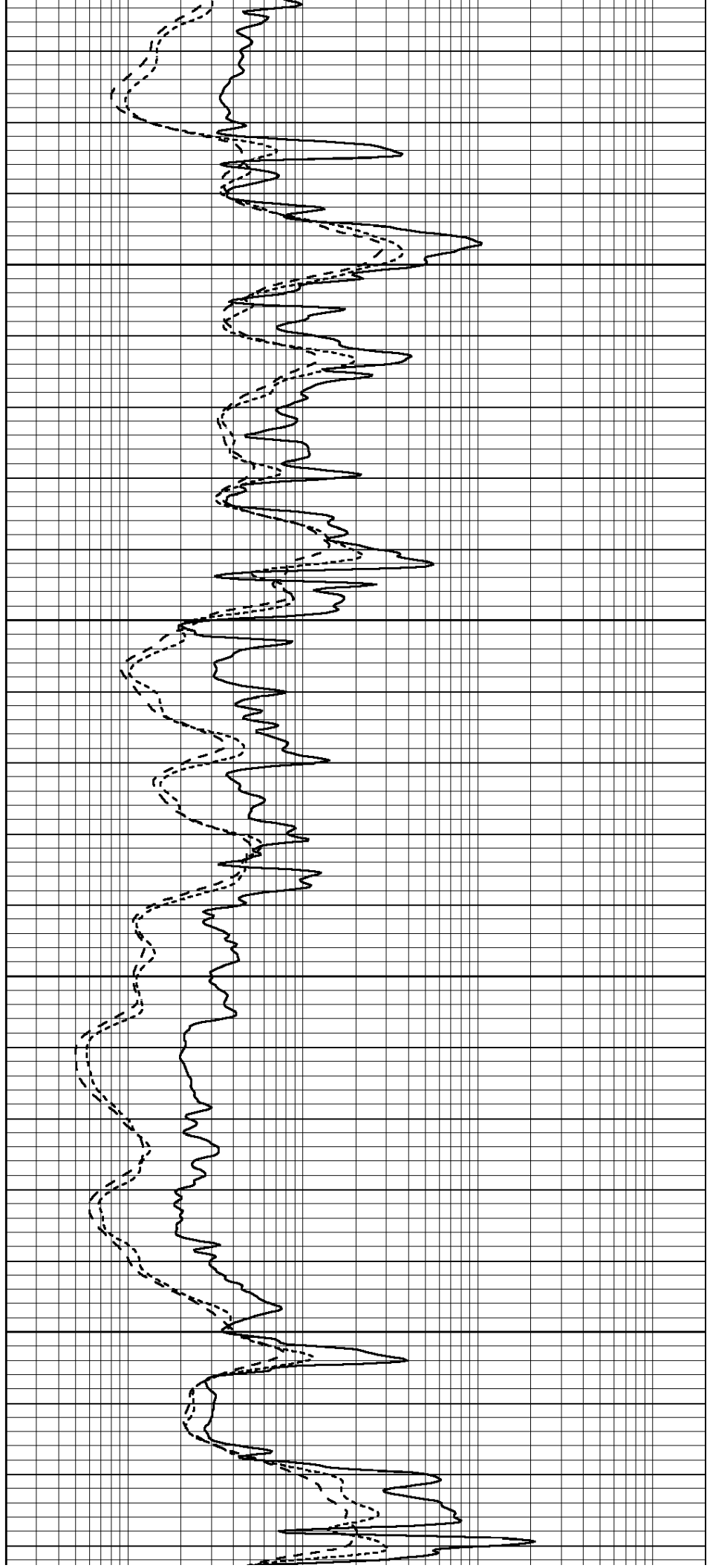


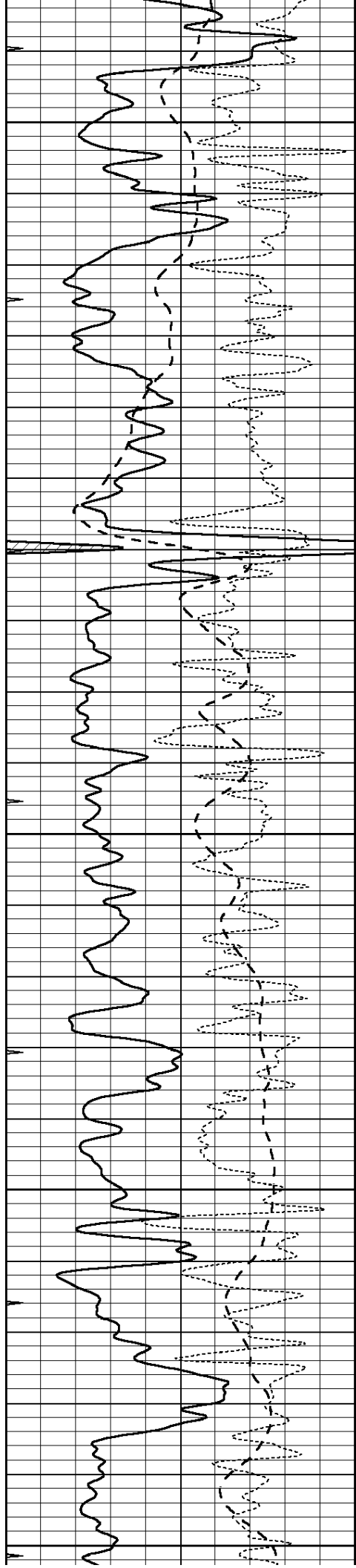
3300

3350

3400

3450





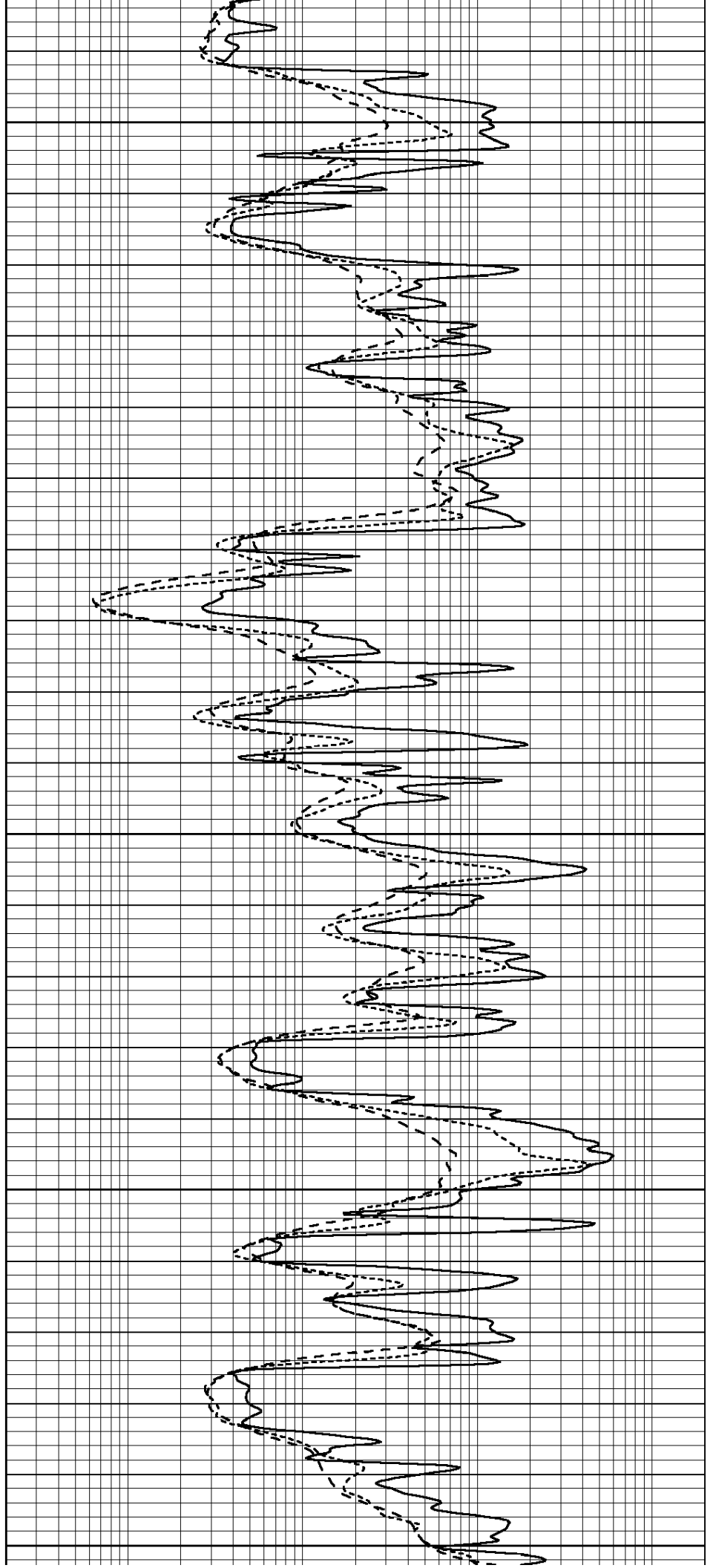
3500

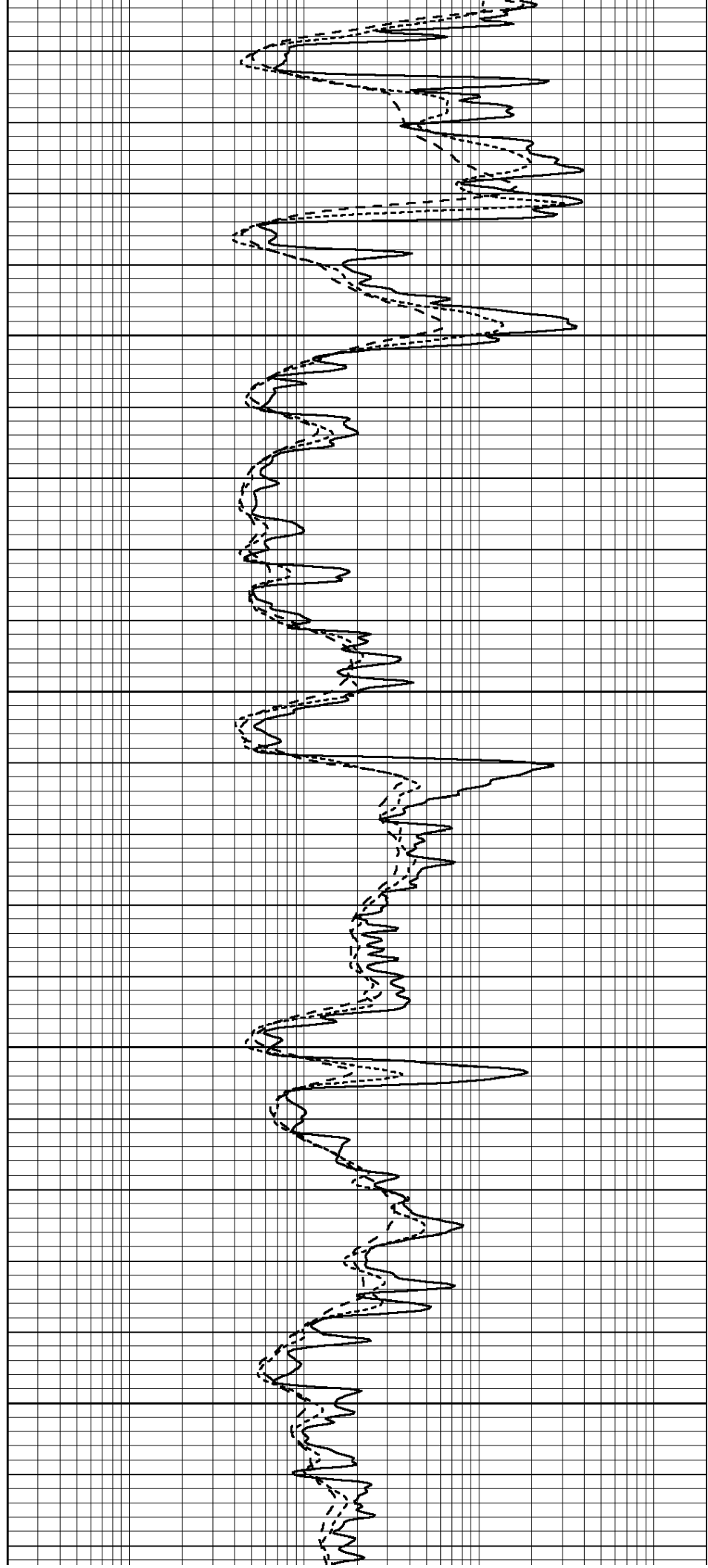
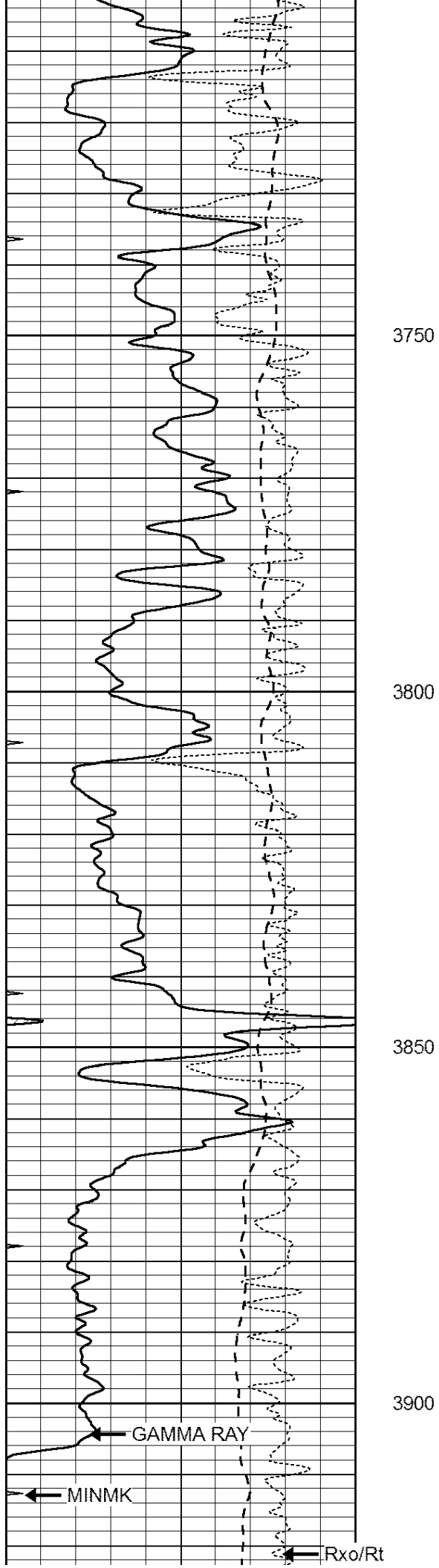
3550

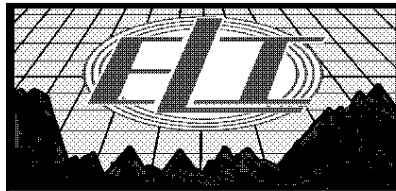
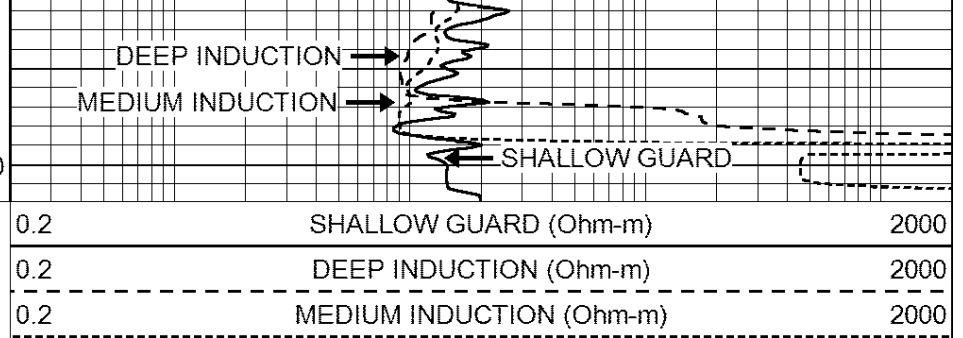
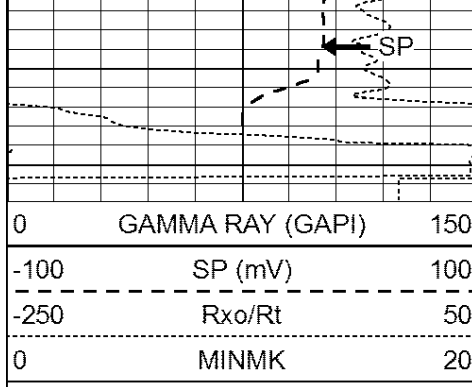
3600

3650

3700

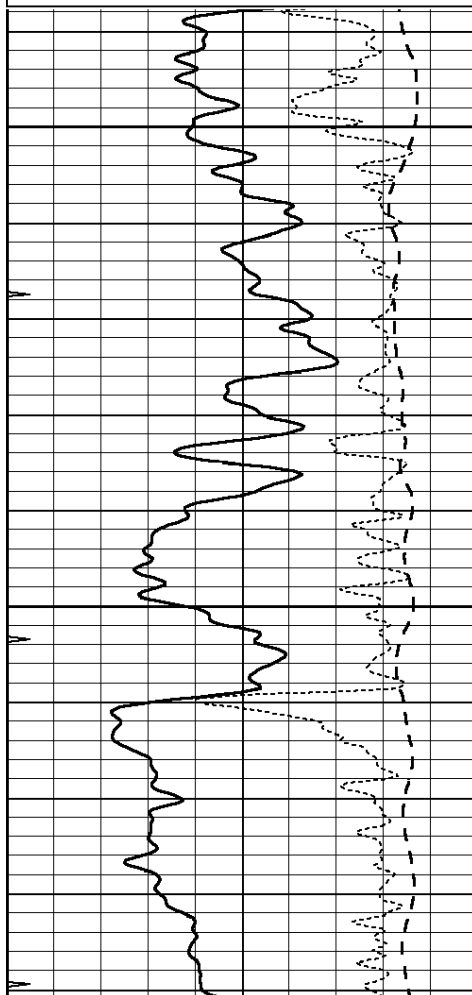
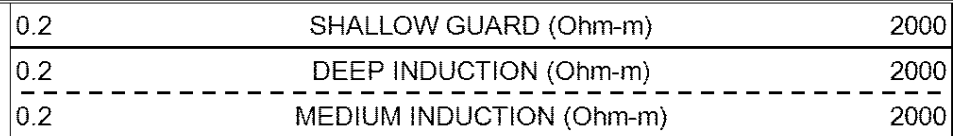
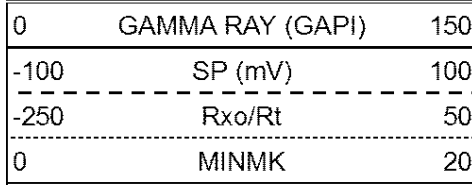






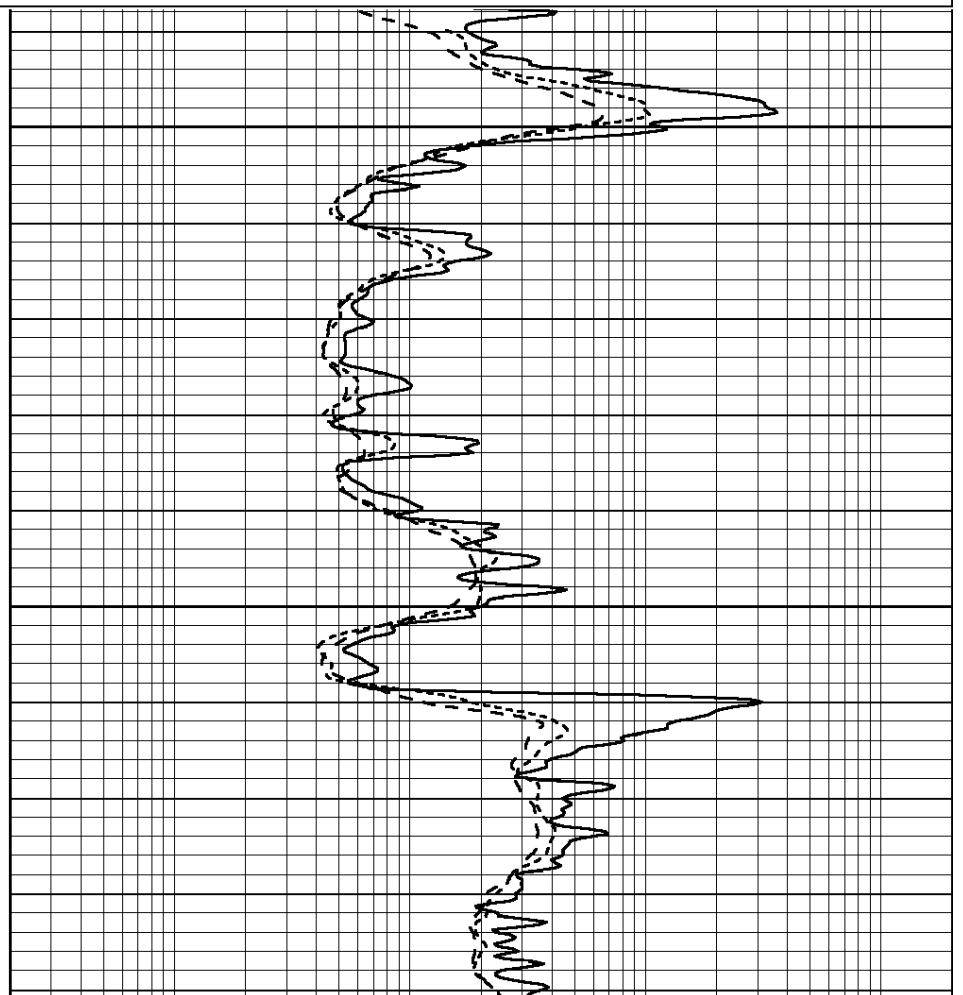
REPEAT SECTION

Database File: 4086ddn.db
 Dataset Pathname: pass2.1
 Presentation Format: _dil
 Dataset Creation: Wed Aug 21 09:19:58 2019 by Calc Open-Cased 090629
 Charted by: Depth in Feet scaled 1:240



3750

3800



	Readings			Reference			Results	
	Zero	Cal		Zero	Cal		m'	b'
Deep	0.000	0.000	mmho/m	2.011	405.777	mmho/m	1.000	0.000
Medium	0.000	0.000	mmho/m	7.590	503.393	mmho/m	1.000	0.000
LL3		7.500	V		1500.000	Ohm-m		
		0.000	V		20.000	Ohm-m		
		-7.200	V		3800.000	mmho-m		

After Survey Verification								
	Readings			Targets			Results	
	Zero	Cal		Zero	Cal		m'	b'
Deep	0.000	0.000	mmho/m	0.000	0.000	mmho/m	0.000	0.000
Medium	0.000	0.000	mmho/m	0.000	0.000	mmho/m	0.000	0.000
LL3		1.000	Ohm-m		1.000	Ohm-m		
		0.000	Ohm-m		0.000	Ohm-m		
		1.000	mmho-m		1.000	mmho-m		

Litho Density Calibration Report
Serial: 001N Model: PRB

Master Calibration		Performed Fri Feb 22 10:21:38 2019				
	Background	Magnesium	Aluminum	Sandstone		
Window 1	1650.2	7609.7	2906.5	8386.5	cps	
Window 2	1538.2	6635.9	2614.4	7212.4	cps	
Window 3	1257.0	3718.7	1765.8	3927.1	cps	
Window 4	376.8	375.6	373.4	374.5	cps	
Long Space	0.0	5097.7	1076.2	5674.2	cps	
Short Space	2.8	1704.3	1106.3	1723.6	cps	
Rho		1.7100	2.5900	1.3800	g/cc	
Pe		0.0000	2.5700	1.5500		
Rib Angle	: 44.5	Rib Slope	: 0.982	Density/Spine Ratio	: 0.545	
Spine Angle	: 74.5	Spine Slope	: 3.599	Spine Intercept	: -18.2	

Before Survey Verification		Performed Wed Dec 31 18:00:00 1969				
	Background	Magnesium	Aluminum	Sandstone		
Window 1	0.0	0.0	0.0	0.0	cps	
Window 2	0.0	0.0	0.0	0.0	cps	
Window 3	0.0	0.0	0.0	0.0	cps	
Window 4	0.0	0.0	0.0	0.0	cps	
Long Space	0.0	0.0	0.0	0.0	cps	
Short Space	0.0	0.0	0.0	0.0	cps	
Measured Rho		0.0000	0.0000	0.0000	g/cc	
Measured Correction		0.0000	0.0000	0.0000	g/cc	
Measured Pe			0.0000	0.0000		

After Survey Verification		Performed Wed Dec 31 18:00:00 1969				
	Background	Magnesium	Aluminum	Sandstone		
Window 1	0.0	0.0	0.0	0.0	cps	
Window 2	0.0	0.0	0.0	0.0	cps	
Window 3	0.0	0.0	0.0	0.0	cps	
Window 4	0.0	0.0	0.0	0.0	cps	
Long Space	0.0	0.0	0.0	0.0	cps	
Short Space	0.0	0.0	0.0	0.0	cps	
Measured Rho		0.0000	0.0000	0.0000	g/cc	
Measured Correction		0.0000	0.0000	0.0000	g/cc	
Measured Pe			0.0000	0.0000		

Compensated Neutron Calibration Report

Serial Number: 61
 Tool Model: G

CALIBRATION

Detector	Readings	Target	Normalization
Short Space	1.00 cps	1.00 cps	1.0000
Long Space	1.00 cps	1.00 cps	1.0000

PRE-SURVEY VERIFICATION

	Detector	Readings	Measured	Target
1)	Short Space	cps		
	Long Space	cps	pu	pu
2)	Short Space	cps		
	Long Space	cps	pu	
3)	Short Space	cps		
	Long Space	cps	pu	

POST-SURVEY VERIFICATION

	Detector	Readings	Measured	Target
1)	Short Space	cps		
	Long Space	cps	pu	pu
2)	Short Space	cps		
	Long Space	cps	pu	pu
3)	Short Space	cps		
	Long Space	cps	pu	pu

Gamma Ray Calibration Report

Serial Number: GR6
 Tool Model: OPEN
 Performed: Wed Jul 03 12:57:34 2019

Calibrator Value: 150.0 GAPI

Background Reading: 0.0 cps
 Calibrator Reading: 276.0 cps

Sensitivity: 0.5700 GAPI/cps