



SONIC LOG

Company AGV CORPORATION
 Well SPRAGUE #1
 Field PAUL SOUTH
 County BUTLER
 State KANSAS

Company AGV CORPORATION
 Well SPRAGUE #1
 Field PAUL SOUTH
 County BUTLER State KANSAS

Location: API # : 15-015-24136-0000
 1310' FSL & 1395' FEL
 SEC 35 TWP 25S RGE 3E
 Permanent Datum GROUND LEVEL Elevation 1304
 Log Measured From KELLY BUSHING 9' A.G.L.
 Drilling Measured From KELLY BUSHING
 Other Services CDL/CNL/MEL DIL
 Elevation K.B. 1313
 D.F. 1311
 G.L. 1304

Date	11/01/19
Run Number	TWO
Depth Driller	2830
Depth Logger	2832
Bottom Logged Interval	2822
Top Log Interval	00
Casing Driller	8 5/8" @ 265
Casing Logger	265
Bit Size	7 7/8"
Type Fluid in Hole	CHEMICAL MUD
Density / Viscosity	9.6/50
pH / Fluid Loss	9.5/8.8
Source of Sample	FLOWLINE
Rm @ Meas. Temp	1.1 @ 55F
Rmt @ Meas. Temp	.83 @ 55F
Rmc @ Meas. Temp	1.32 @ 55F
Source of Rmt / Rmc	MEASURED
Rm @ BHT	.57 @ 106F
Time Circulation Stopped	2 HOURS
Time Logger on Bottom	///
Maximum Recorded Temperature	106F
Equipment Number	1523
Location	HAYS, KANSAS
Recorded By	GUS PFANENSTIEL
Witnessed By	KENT ROBERTS

<<< Fold Here >>>

All interpretations are opinions based on inferences from electrical or other measurements and we cannot and do not guarantee the accuracy or correctness of any interpretation, and we shall not, except in the case of gross or willful negligence on our part, be liable or responsible for any loss, costs, damages, or expenses incurred or sustained by anyone resulting from any interpretation made by any of our officers, agents or employees. These interpretations are also subject to our general terms and conditions set out in our current Price Schedule.

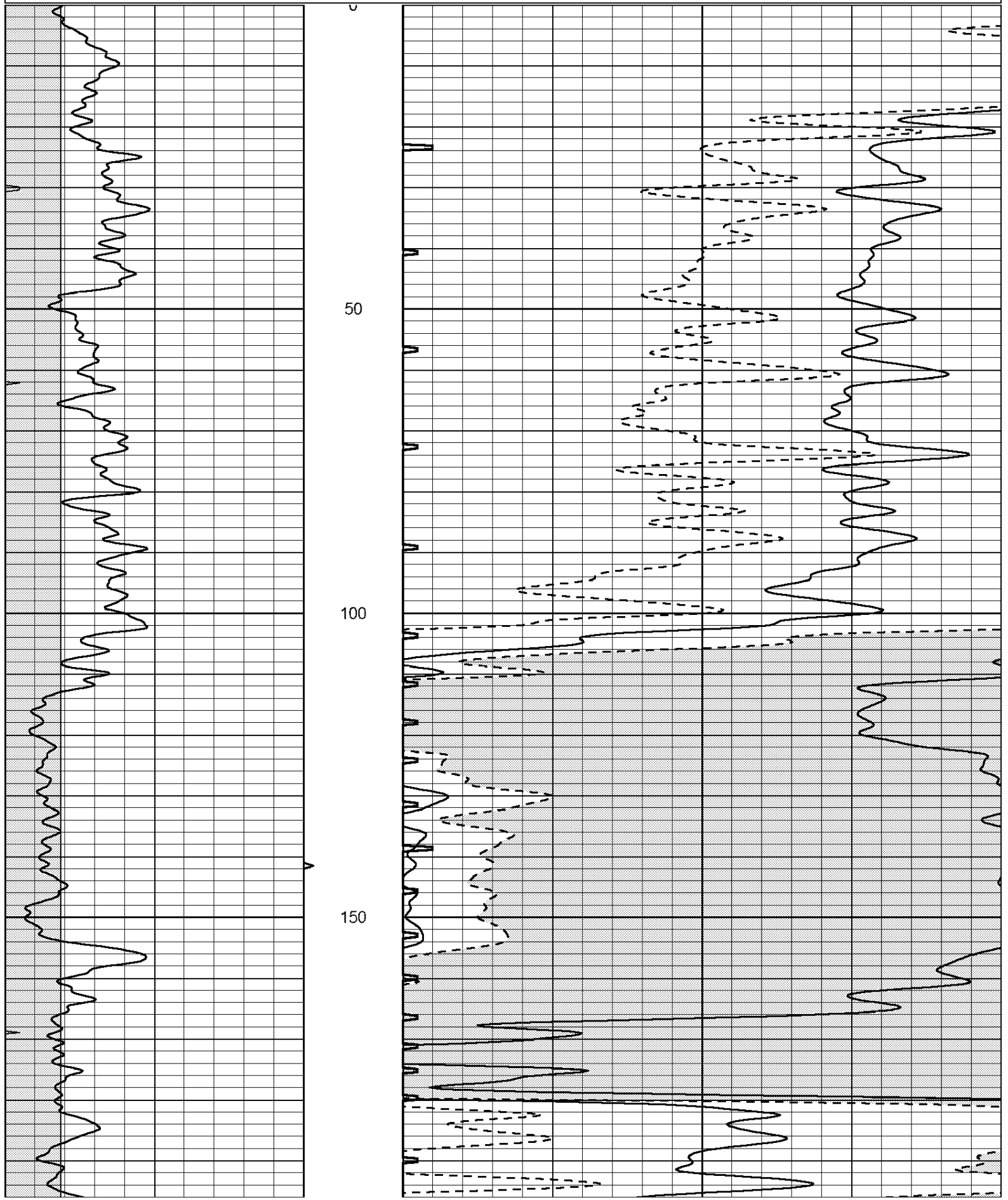
Comments

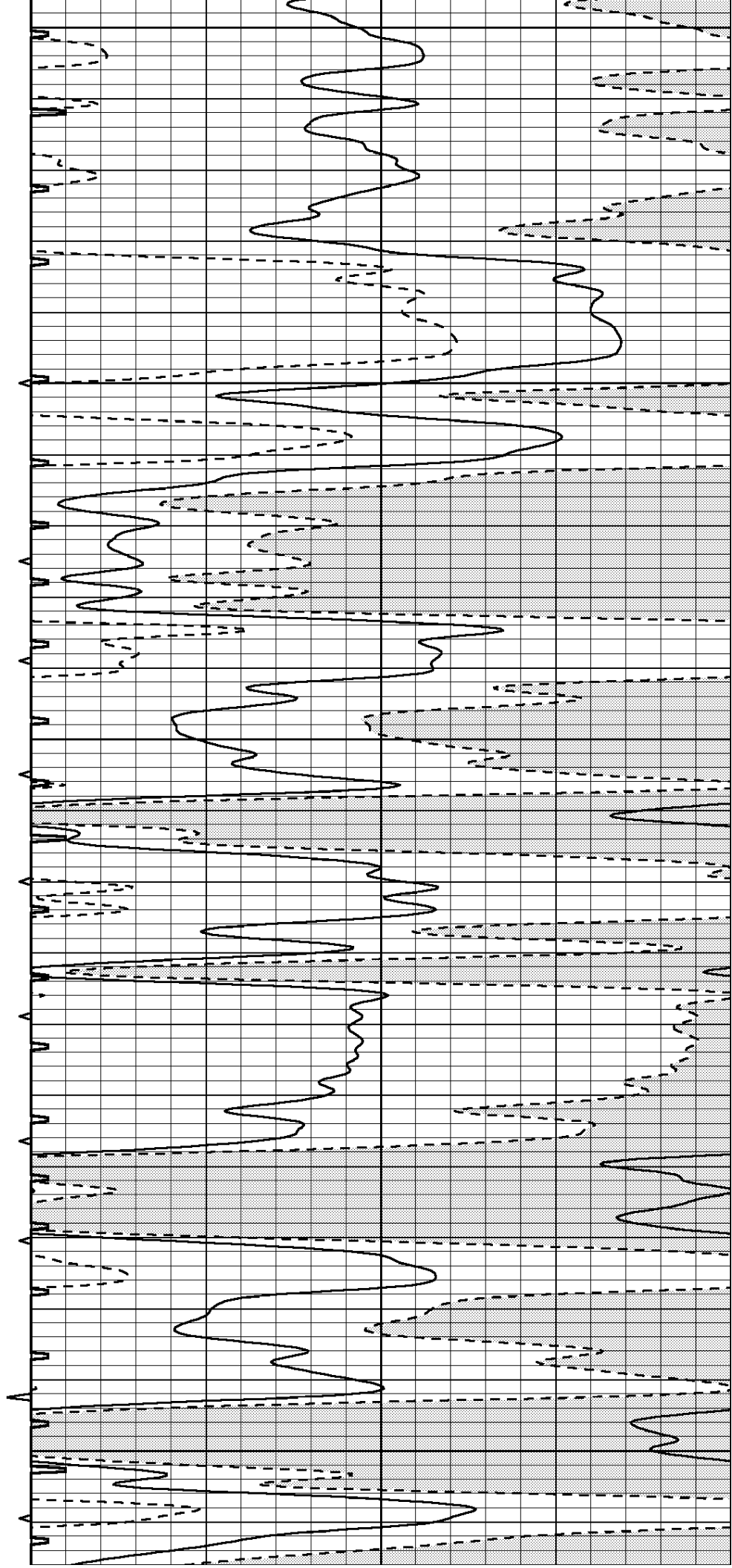
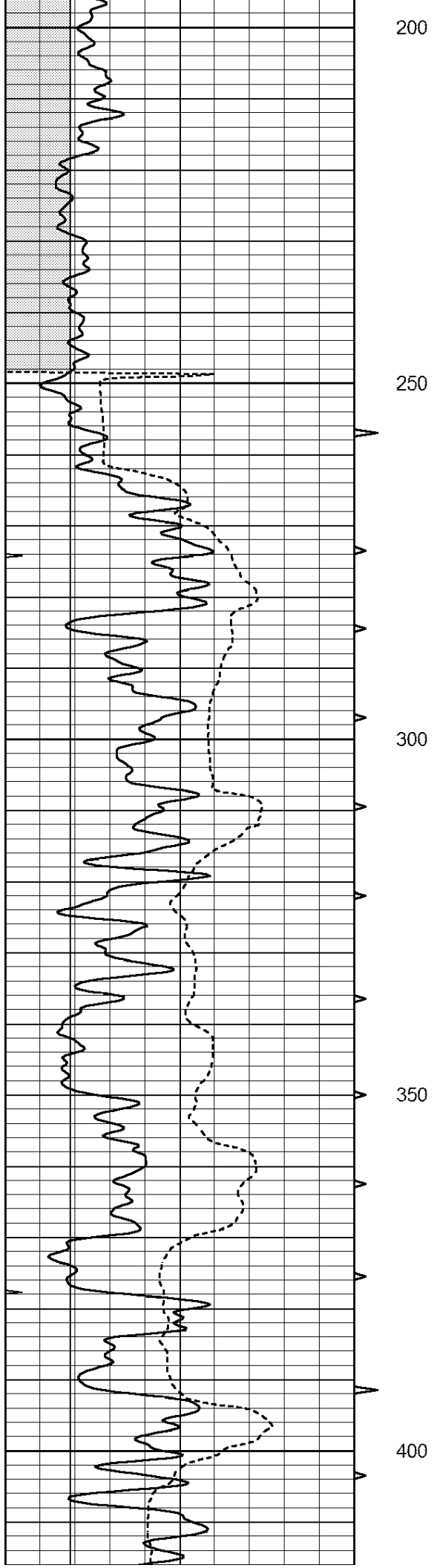
THANK YOU FOR USING ELI WIRELINE, HAYS, KS. (785) 628-6395

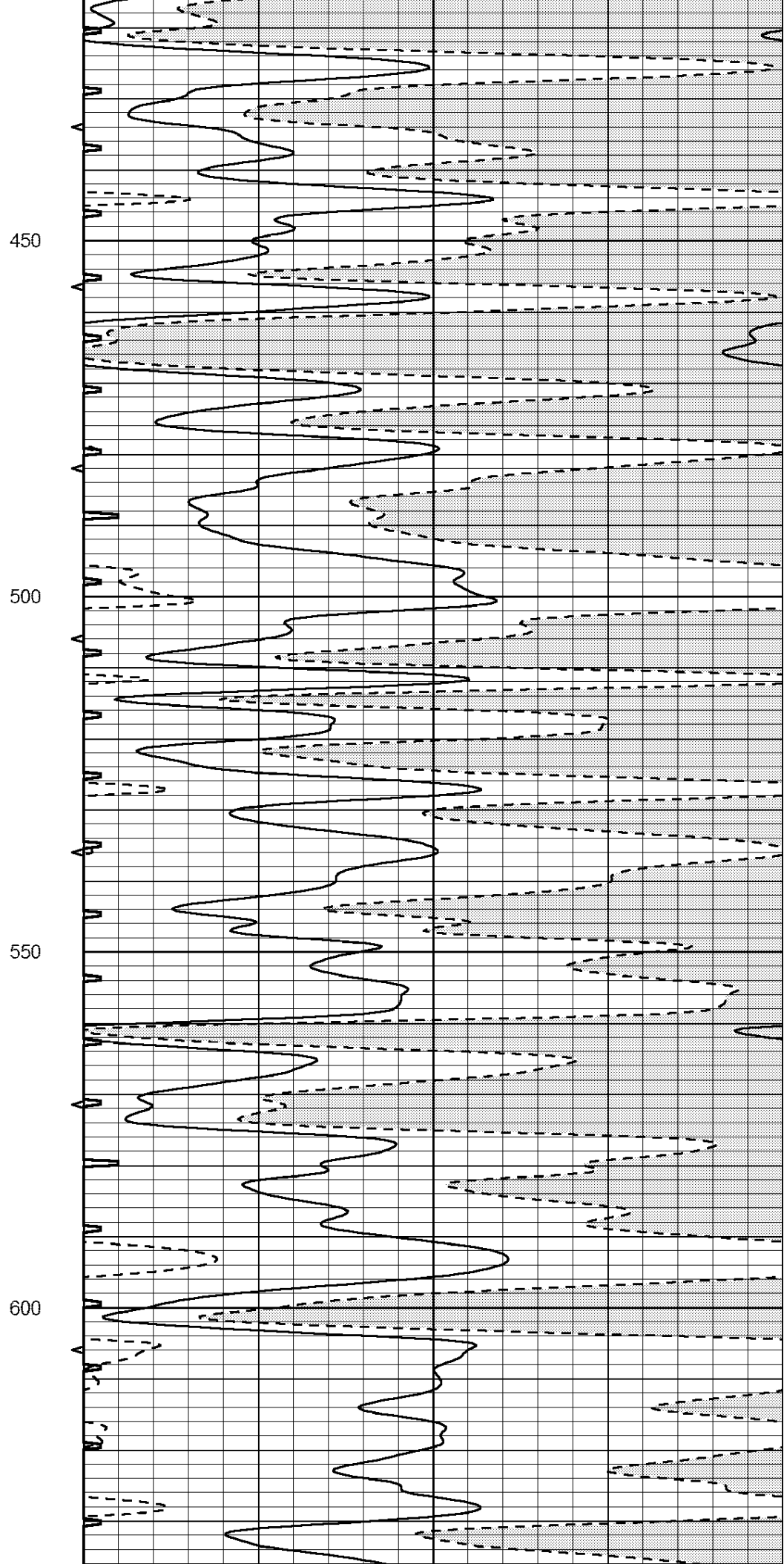
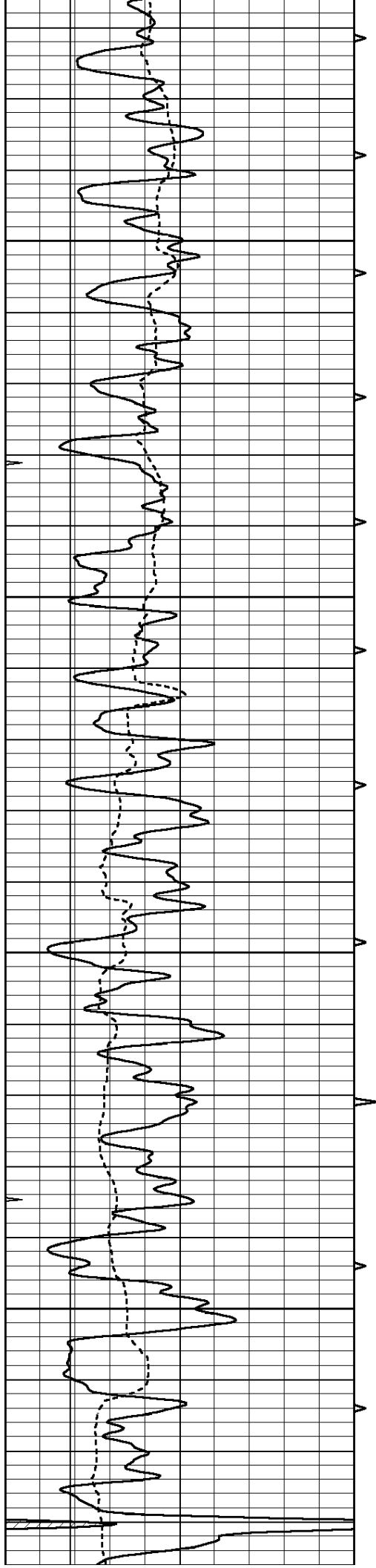
DIRECTIONS
 WEST SIDE OF BENTON TO MEADOWLARK RD., 2 NORTH,
 1 1/2 E, NORTH INTO.

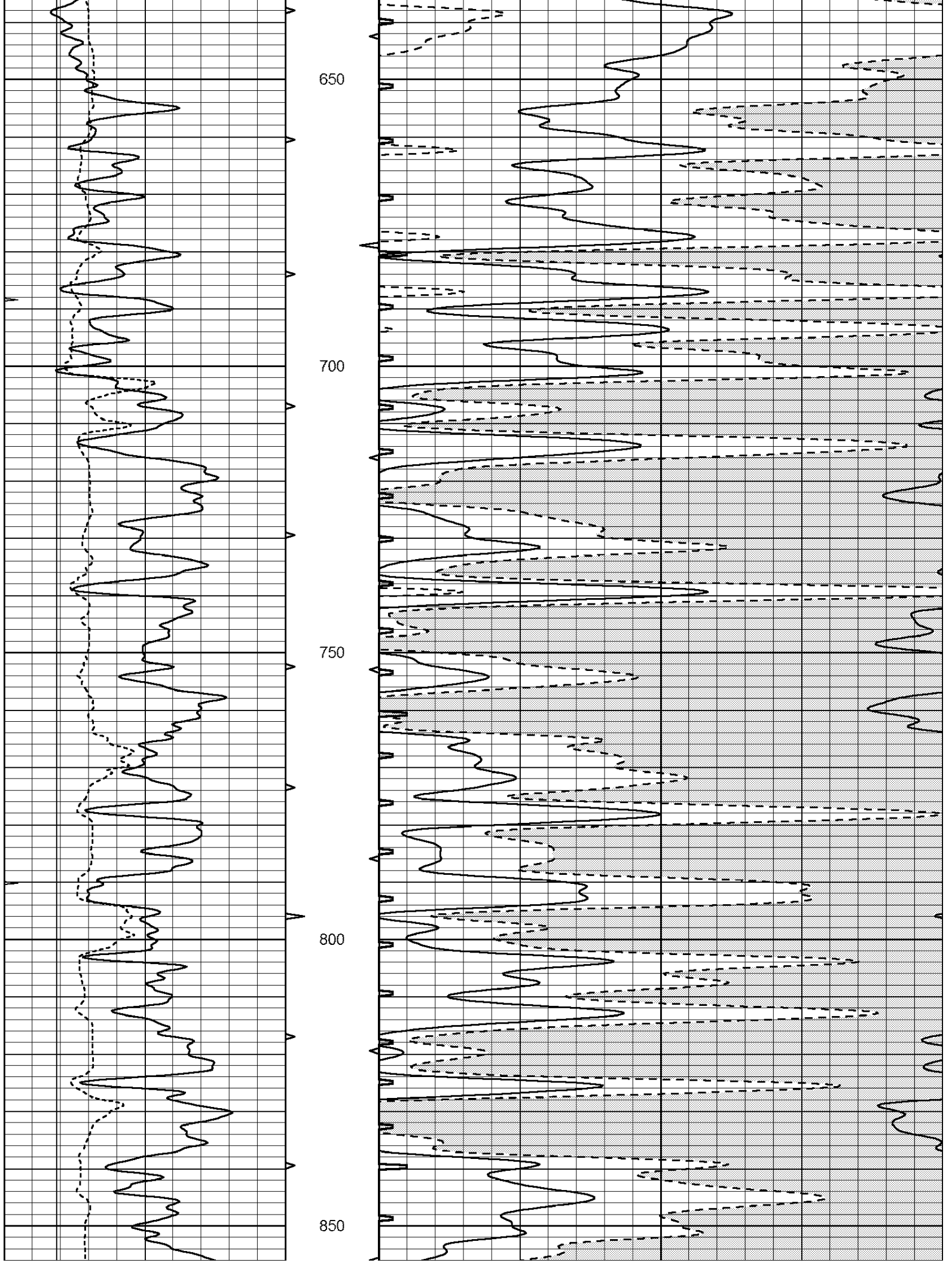
Database File: 4455pe.db
 Dataset Pathname: pass8SON
 Presentation Format: _slt
 Dataset Creation: Fri Nov 01 12:59:06 2019
 Charted by: Depth in Feet scaled 1:240

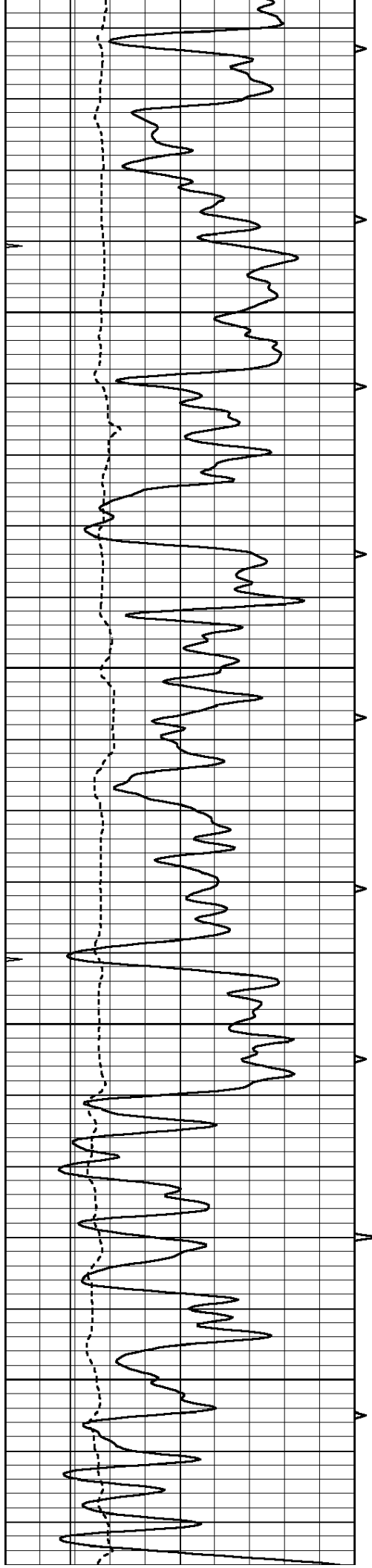
0	GAMMA RAY (GAPI)	150	ABHV	140	DELTA TIME (usec/ft)	40
6	CALIPER (in)	16	10 (ft3) 0	30	SONIC POROSITY (pu)	-10
0	MINMK	20	TBHV	0	ITT (msec)	20
			0 (ft3) 10			









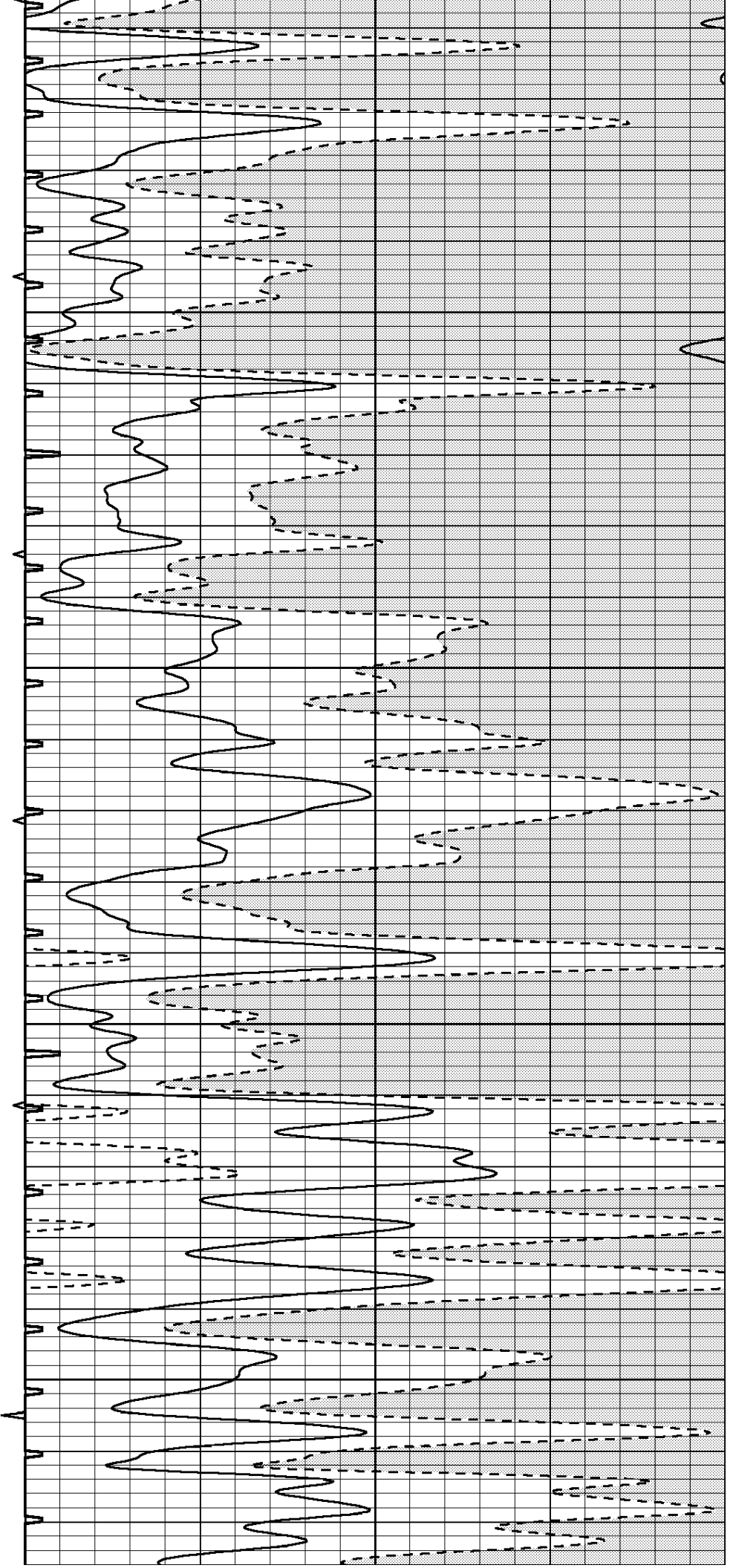


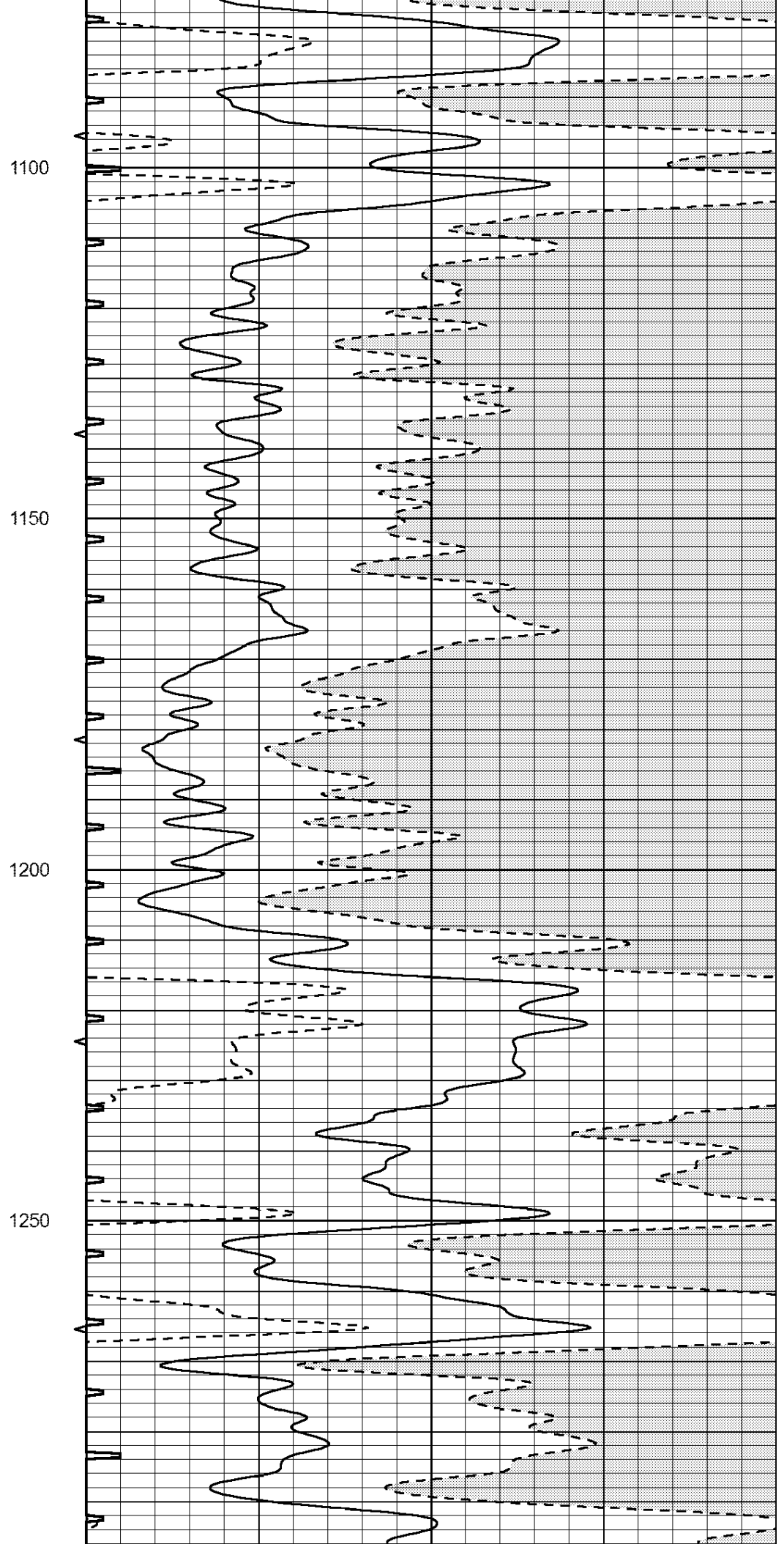
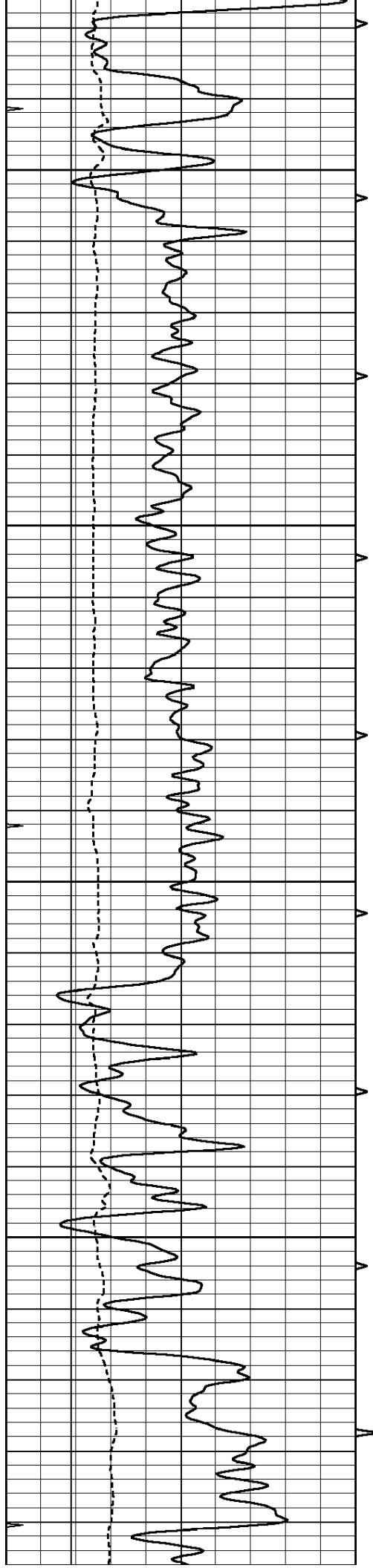
900

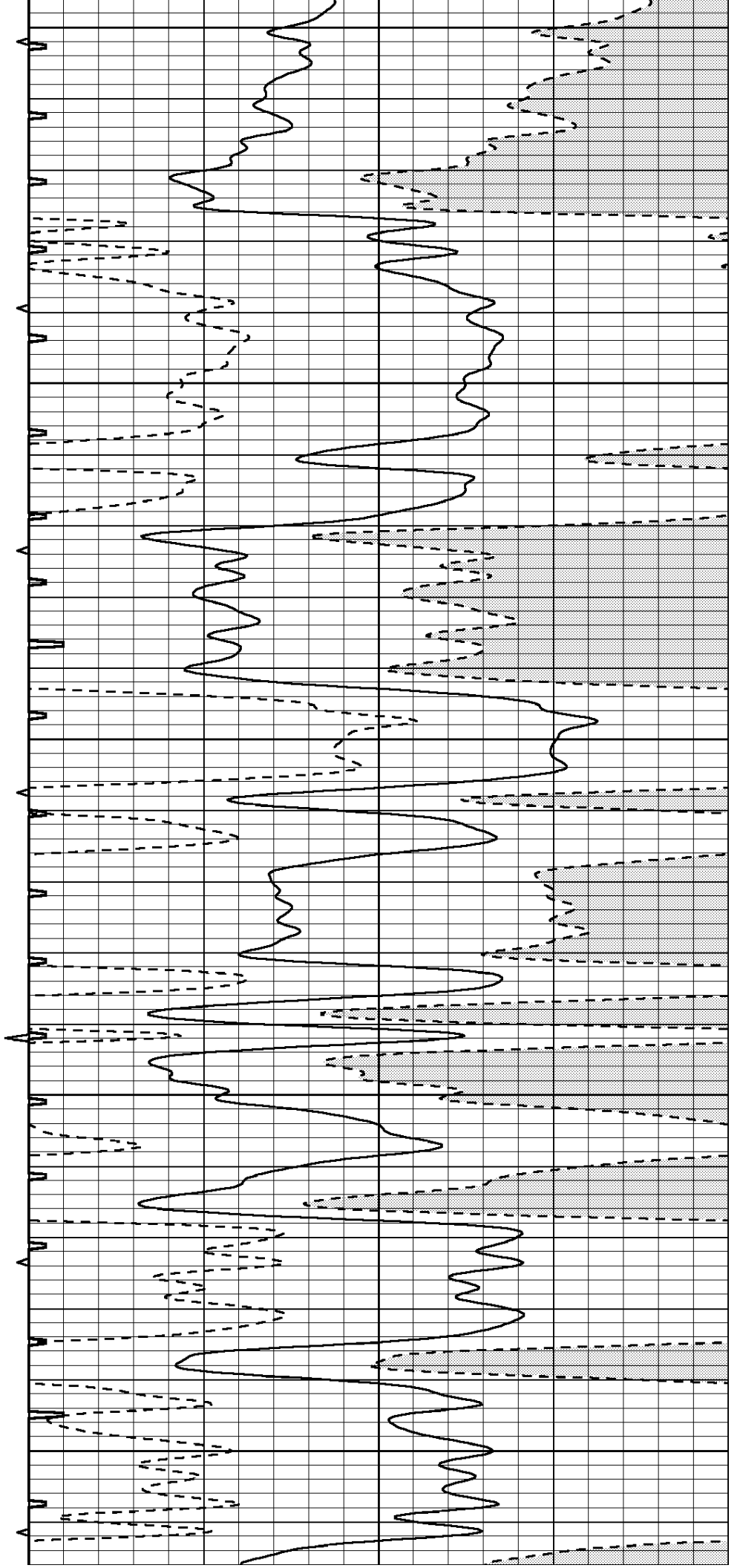
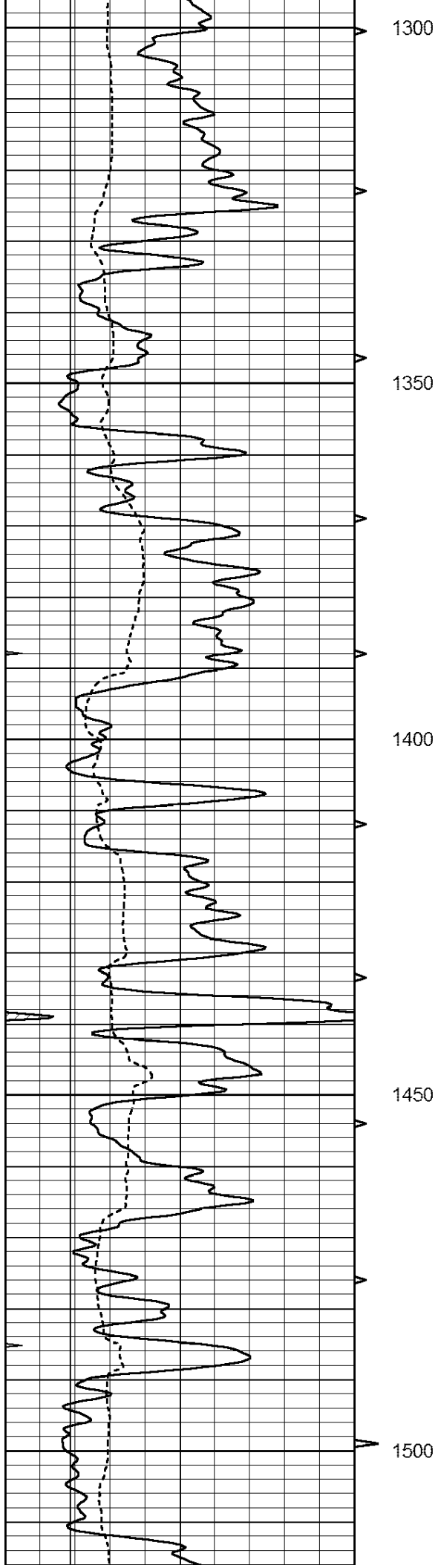
950

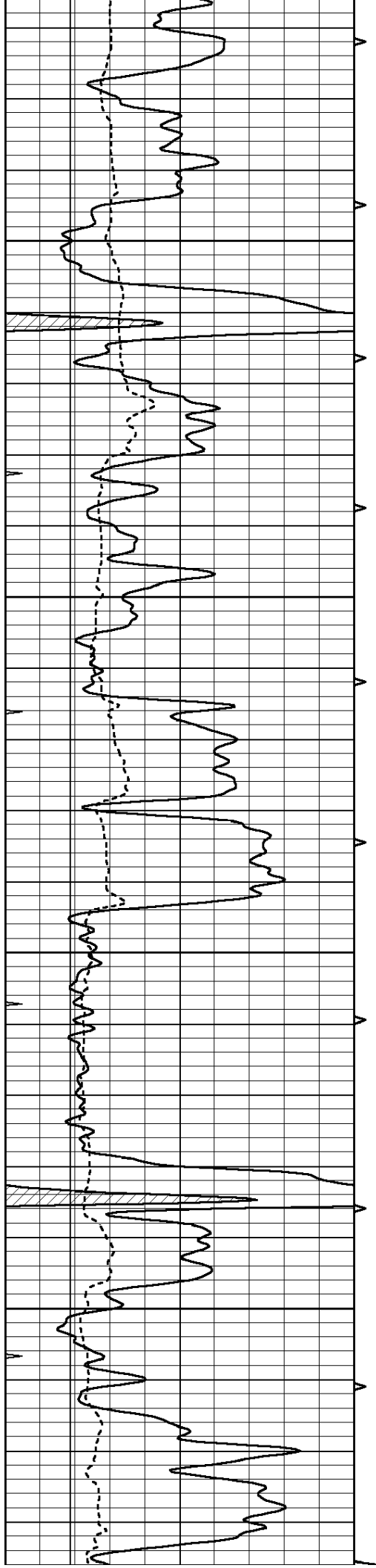
1000

1050







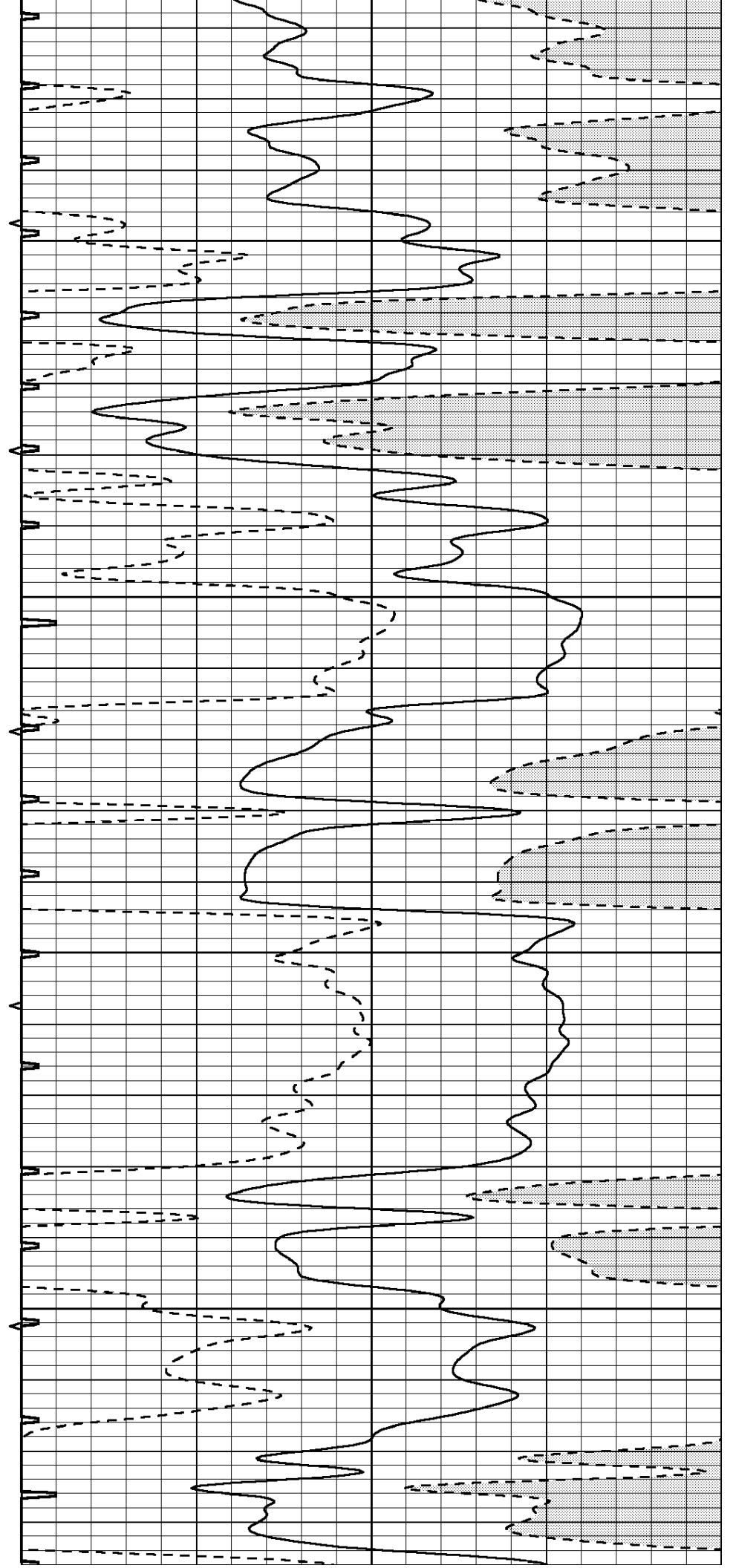


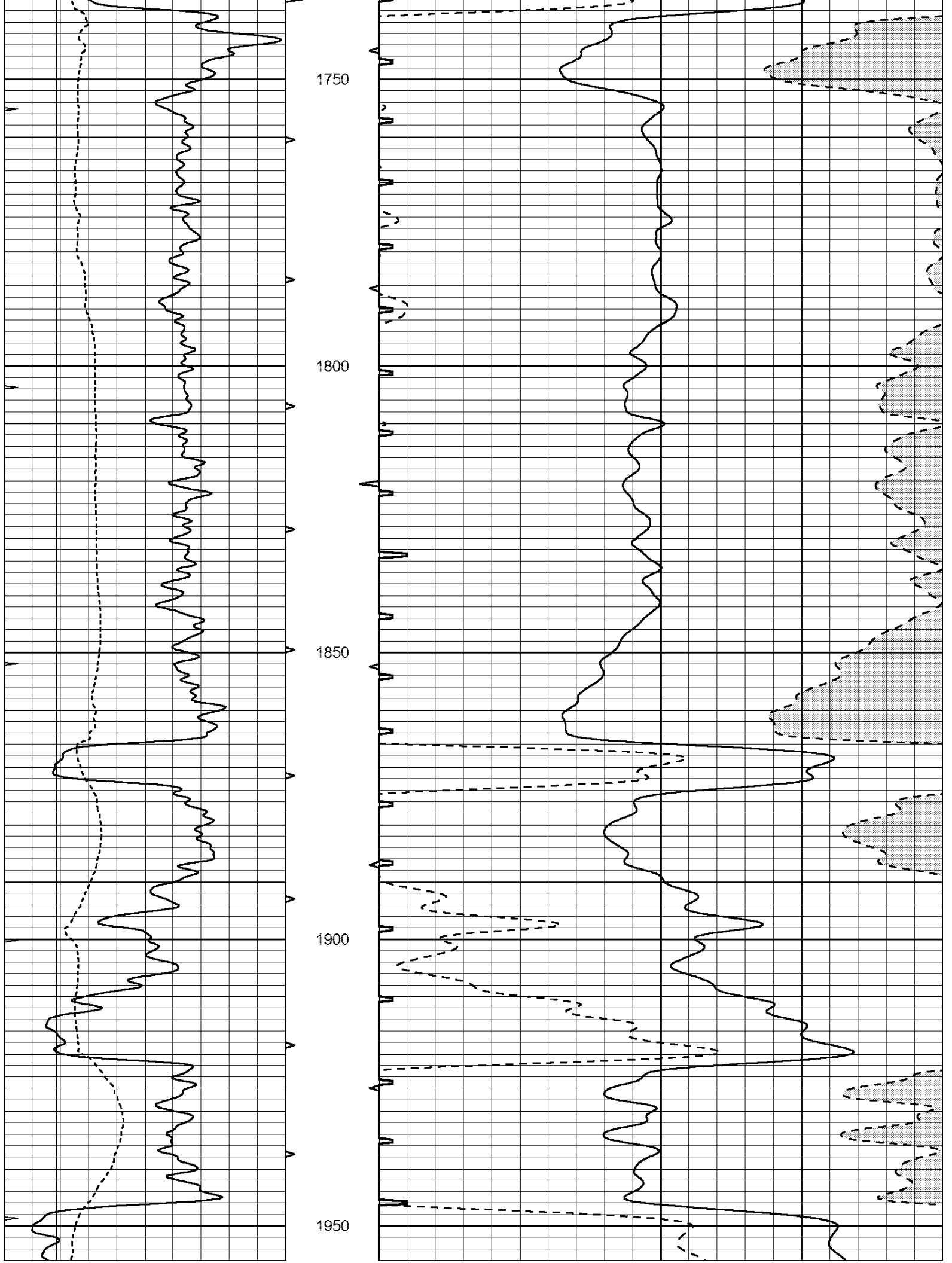
1550

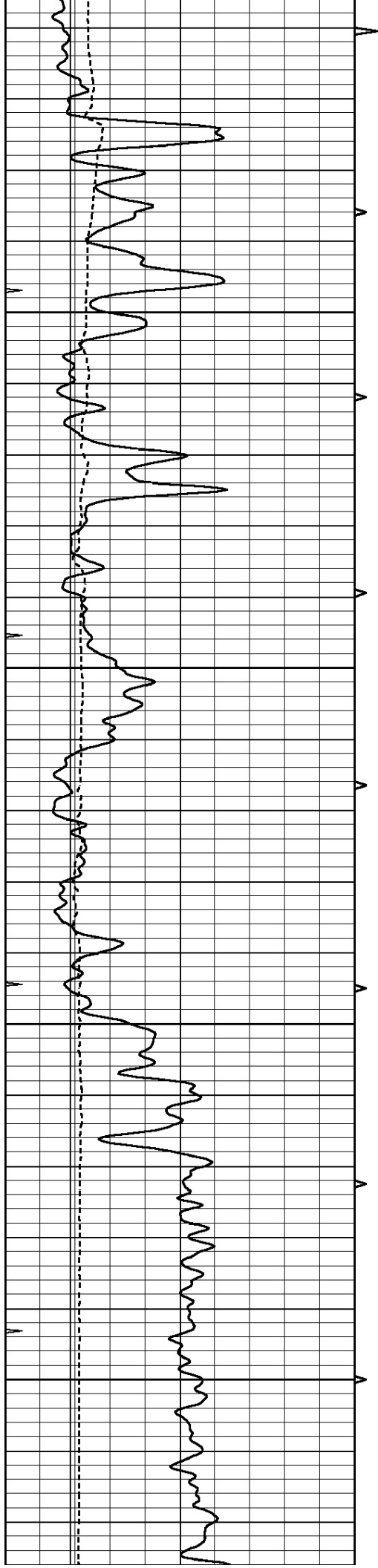
1600

1650

1700





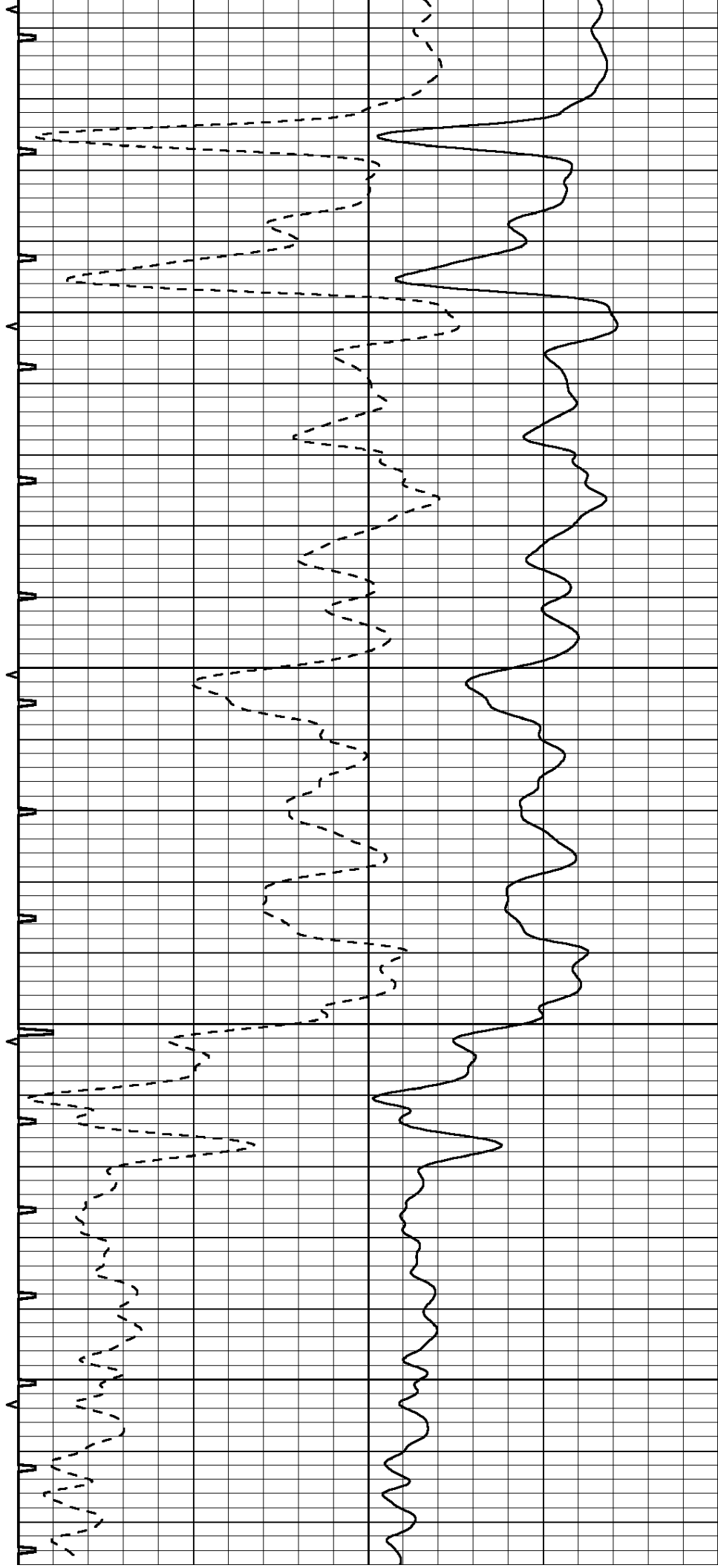


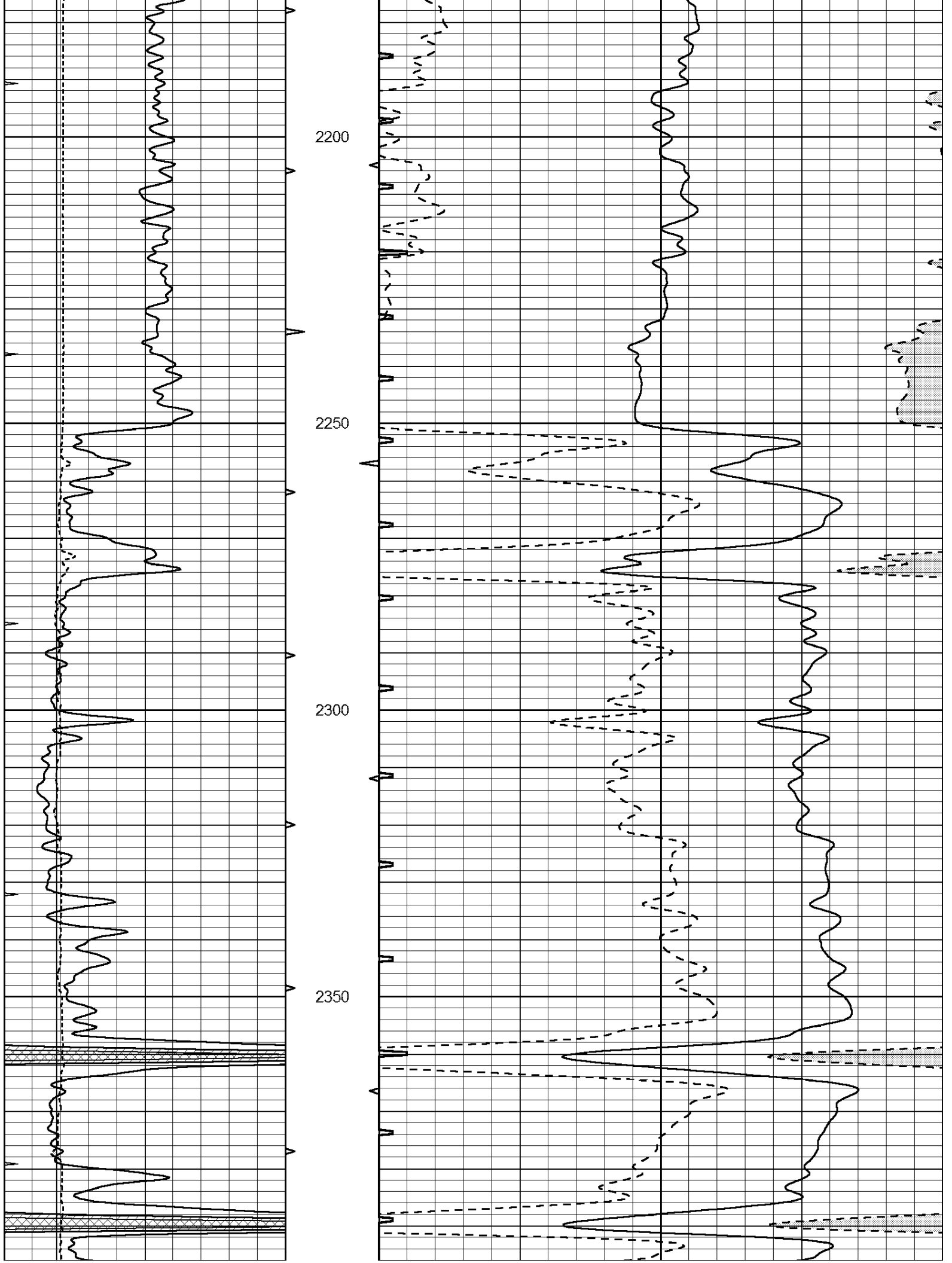
2000

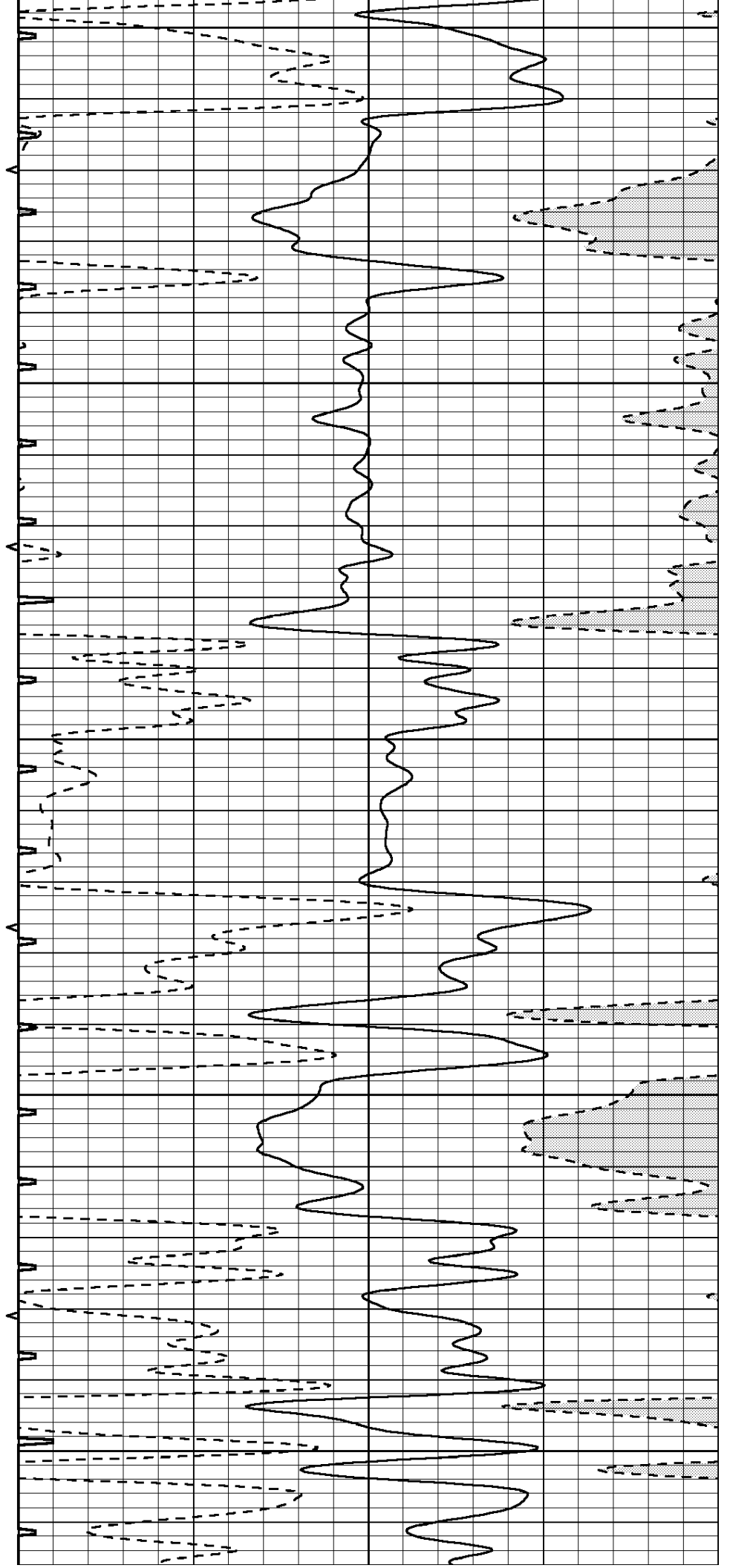
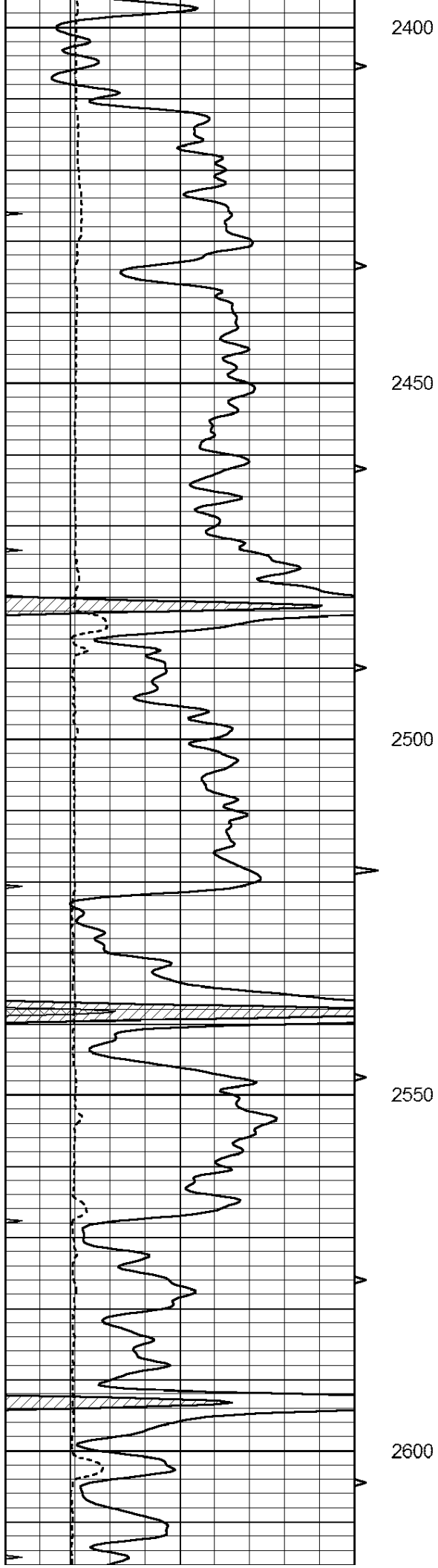
2050

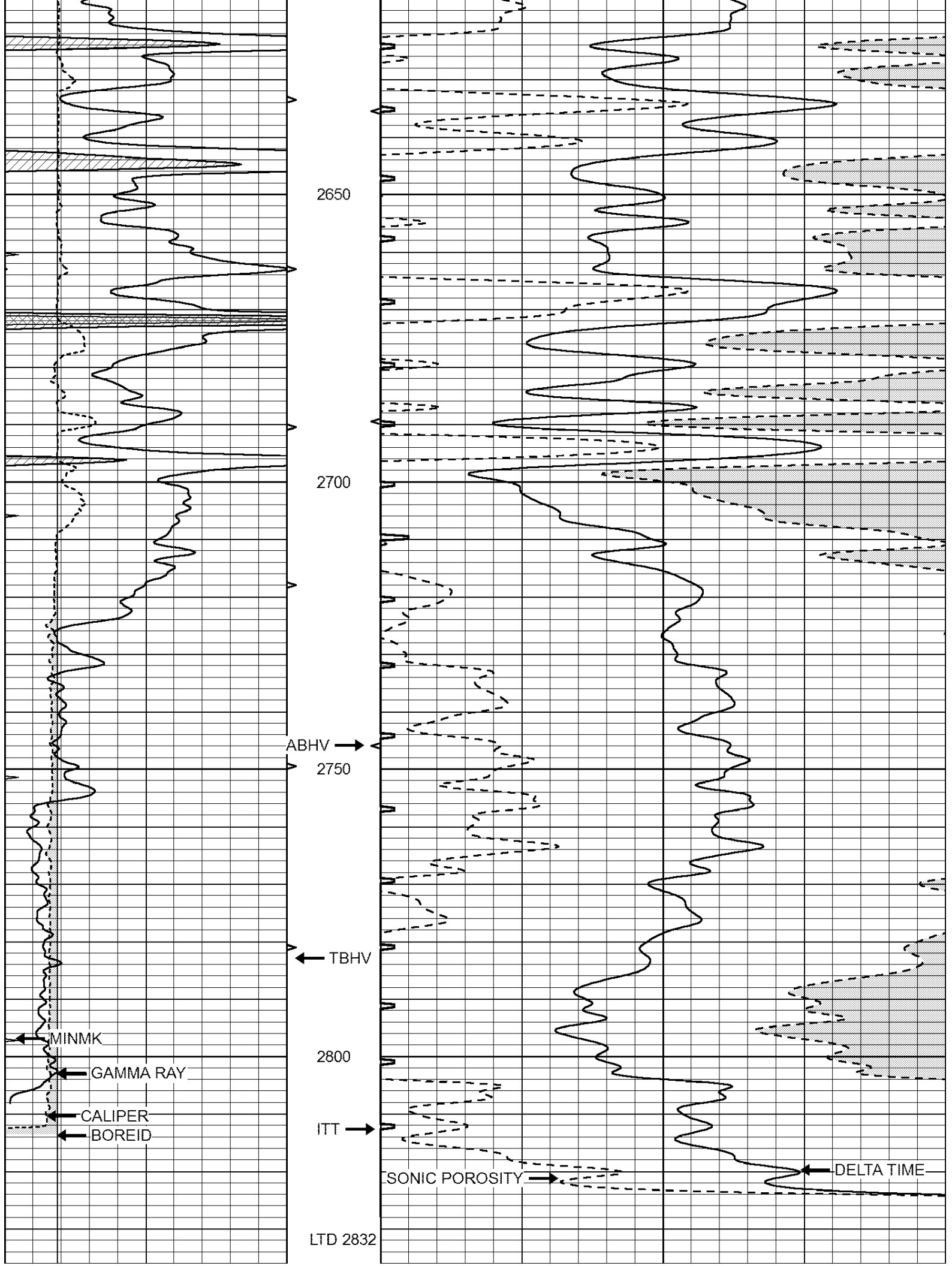
2100

2150

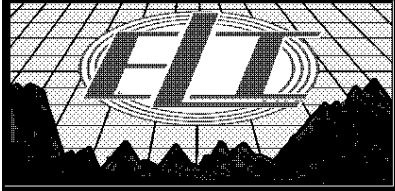








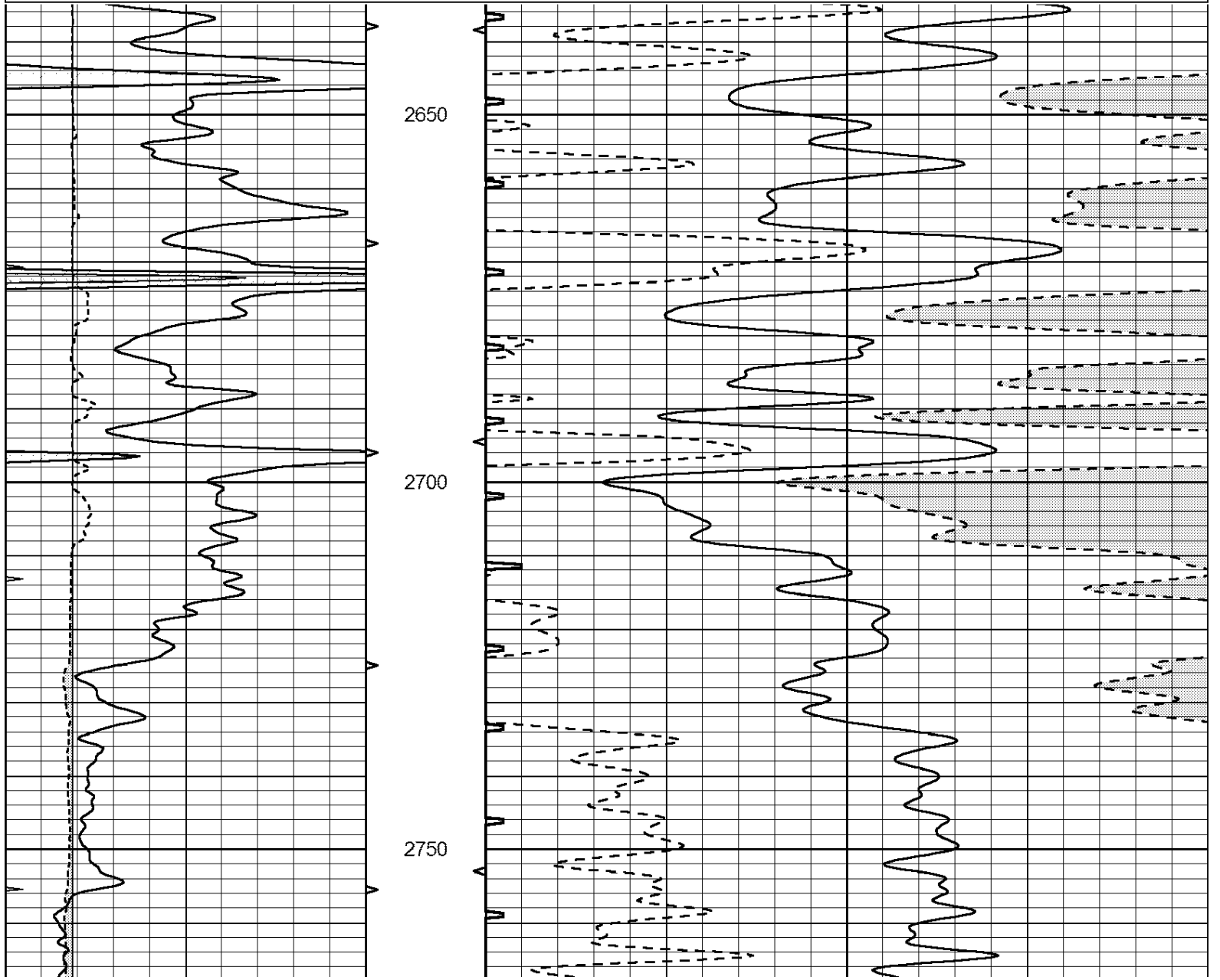
0	GAMMA RAY (GAPI)	150	ABHV	140	DELTA TIME (usec/ft)	40
6	CALIPER (in)	16	10 (ft3) 0	30	SONIC POROSITY (pu)	-10
0	MINMK	20	TBHV	0	ITT (msec)	20
			0 (ft3) 10			

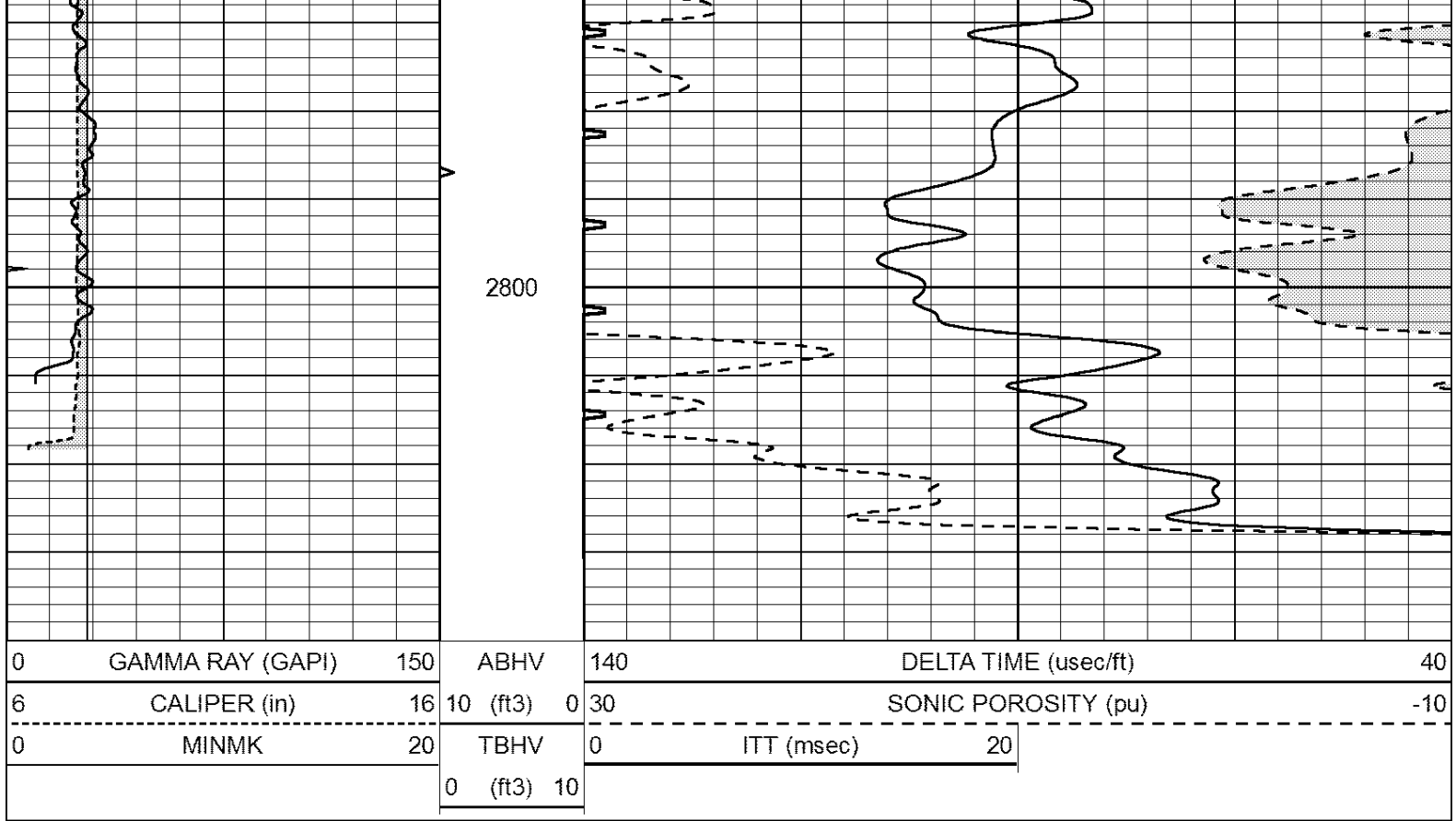


REPEAT SECTION

Database File: 4455pe.db
 Dataset Pathname: pass7.1
 Presentation Format: _slt
 Dataset Creation: Fri Nov 01 12:38:44 2019 by Calc Open-Cased 090629
 Charted by: Depth in Feet scaled 1:240

0	GAMMA RAY (GAPI)	150	ABHV	140	DELTA TIME (usec/ft)	40
6	CALIPER (in)	16	10 (ft3) 0	30	SONIC POROSITY (pu)	-10
0	MINMK	20	TBHV	0	ITT (msec)	20
			0 (ft3) 10			





Calibration Report

Database File: 4455pe.db
 Dataset Pathname: pass7.1
 Dataset Creation: Fri Nov 01 12:38:44 2019 by Calc Open-Cased 090629

MICRO Calibration Report

Serial Number:	Micro1	
Tool Model:	ProbeL	
Performed:	Sat Oct 26 06:47:35 2019	
Caliper Calibration:	Gain=2.030	Offset=6.505
References	Low Cal	High Cal
Readings	9.500	13.000
	0.308	2.032
1.5" Calibration:	Gain=36.134	Offset=-1.200
References	Low Cal	High Cal
Readings	0.000	20.000
	0.004	0.832
2" Calibration:	Gain=40.000	Offset=-0.300
References	Low Cal	High Cal
Readings	0.000	20.000
	0.022	0.793

Gamma Ray Calibration Report

Serial Number:	GR5	
Tool Model:	OPEN	
Performed:	Thu Oct 24 16:06:54 2019	
Calibrator Value:	1.0	GAPI
Background Reading:	0.0	cps

Calibrator Reading:	1.0	cps
Sensitivity:	0.5800	GAPI/cps