



MICRO LOG

Company AGV CORPORATION
 Well SPRAGUE #1
 Field PAUL SOUTH
 County BUTLER
 State KANSAS

Company AGV CORPORATION
 Well SPRAGUE #1
 Field PAUL SOUTH
 County BUTLER State KANSAS

Location: API # : 15-015-24136-0000
 1310' FSL & 1395' FEL
 SEC 35 TWP 25S RGE 3E
 Permanent Datum GROUND LEVEL Elevation 1304
 Log Measured From KELLY BUSHING 9' A.G.L.
 Drilling Measured From KELLY BUSHING
 Other Services CDL/CNL/SON DIL
 Elevation K.B. 1313
 D.F. 1311
 G.L. 1304

Date	11/01/19
Run Number	TWO
Depth Driller	2830
Depth Logger	2832
Bottom Logged Interval	2812
Top Log Interval	1650
Casing Driller	8 5/8" @ 265
Casing Logger	265
Bit Size	7 7/8"
Type Fluid in Hole	CHEMICAL MUD
Density / Viscosity	9.6/50
pH / Fluid Loss	9.5/8.8
Source of Sample	FLOWLINE
Rm @ Meas. Temp	1.1 @ 55F
Rmt @ Meas. Temp	.83 @ 55F
Rmc @ Meas. Temp	1.32 @ 55F
Source of Rmf / Rmc	MEASURED
Rm @ BHT	.57 @ 106F
Time Circulation Stopped	2 HOURS
Time Logger on Bottom	///
Maximum Recorded Temperature	106F
Equipment Number	1523
Location	HAYS, KANSAS
Recorded By	GUS PFANENSTIEL
Witnessed By	KENT ROBERTS

<<< Fold Here >>>

All interpretations are opinions based on inferences from electrical or other measurements and we cannot and do not guarantee the accuracy or correctness of any interpretation, and we shall not, except in the case of gross or willful negligence on our part, be liable or responsible for any loss, costs, damages, or expenses incurred or sustained by anyone resulting from any interpretation made by any of our officers, agents or employees. These interpretations are also subject to our general terms and conditions set out in our current Price Schedule.

Comments

THANK YOU FOR USING ELI WIRELINE, HAYS, KS. (785) 628-6395

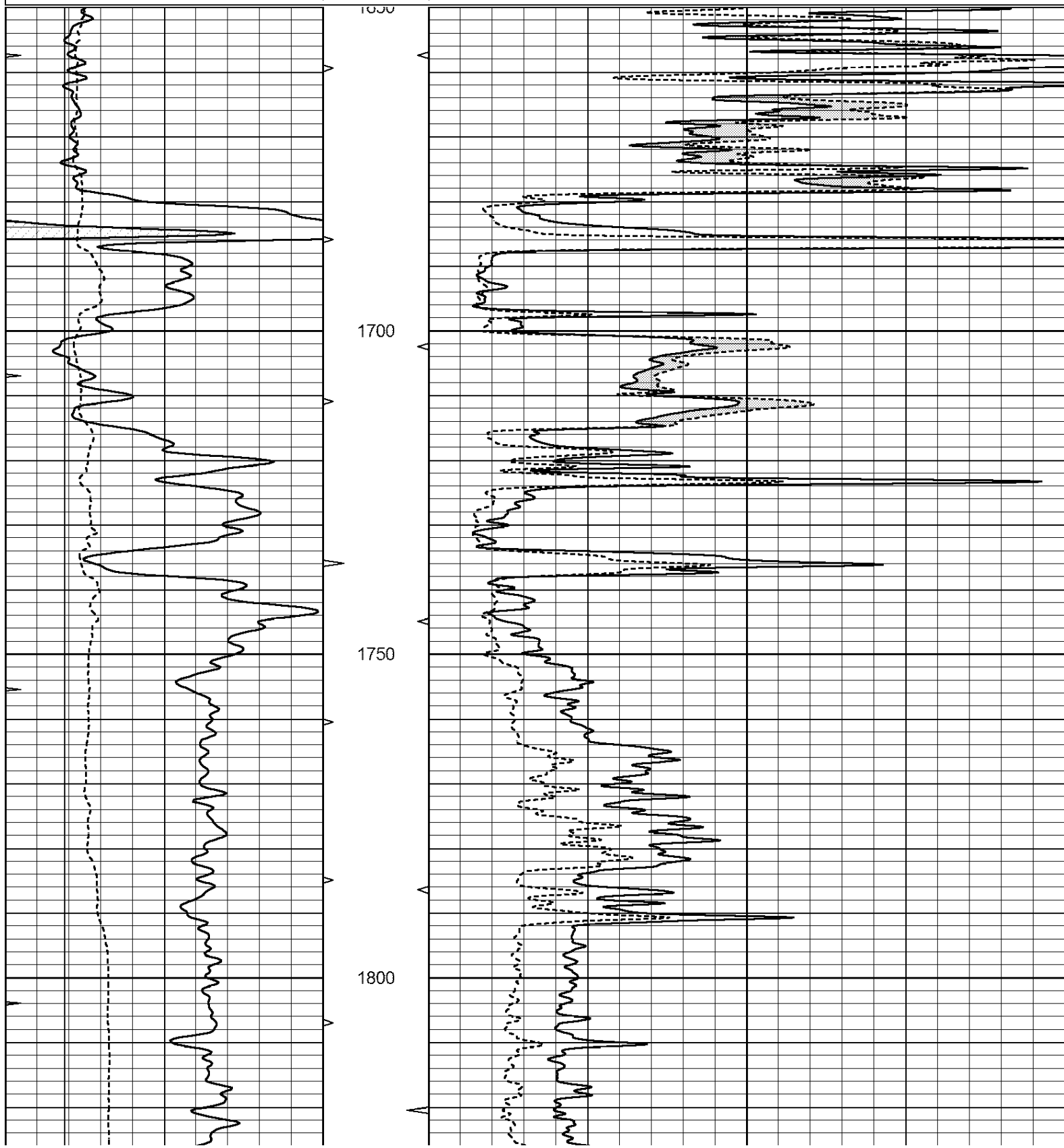
DIRECTIONS
 WEST SIDE OF BENTON TO MEADOWLARK RD., 2 NORTH,
 1 1/2 E, NORTH INTO.

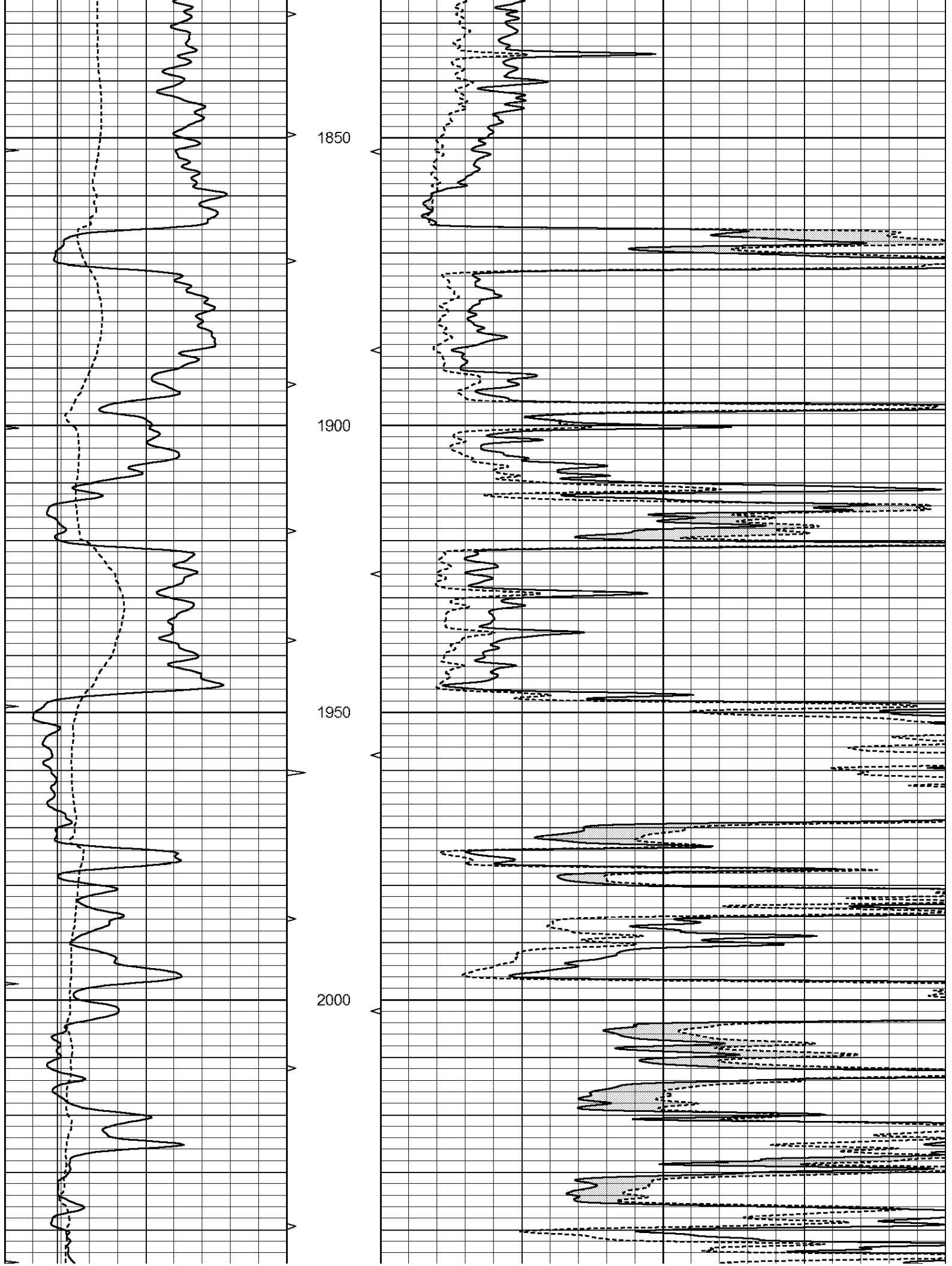


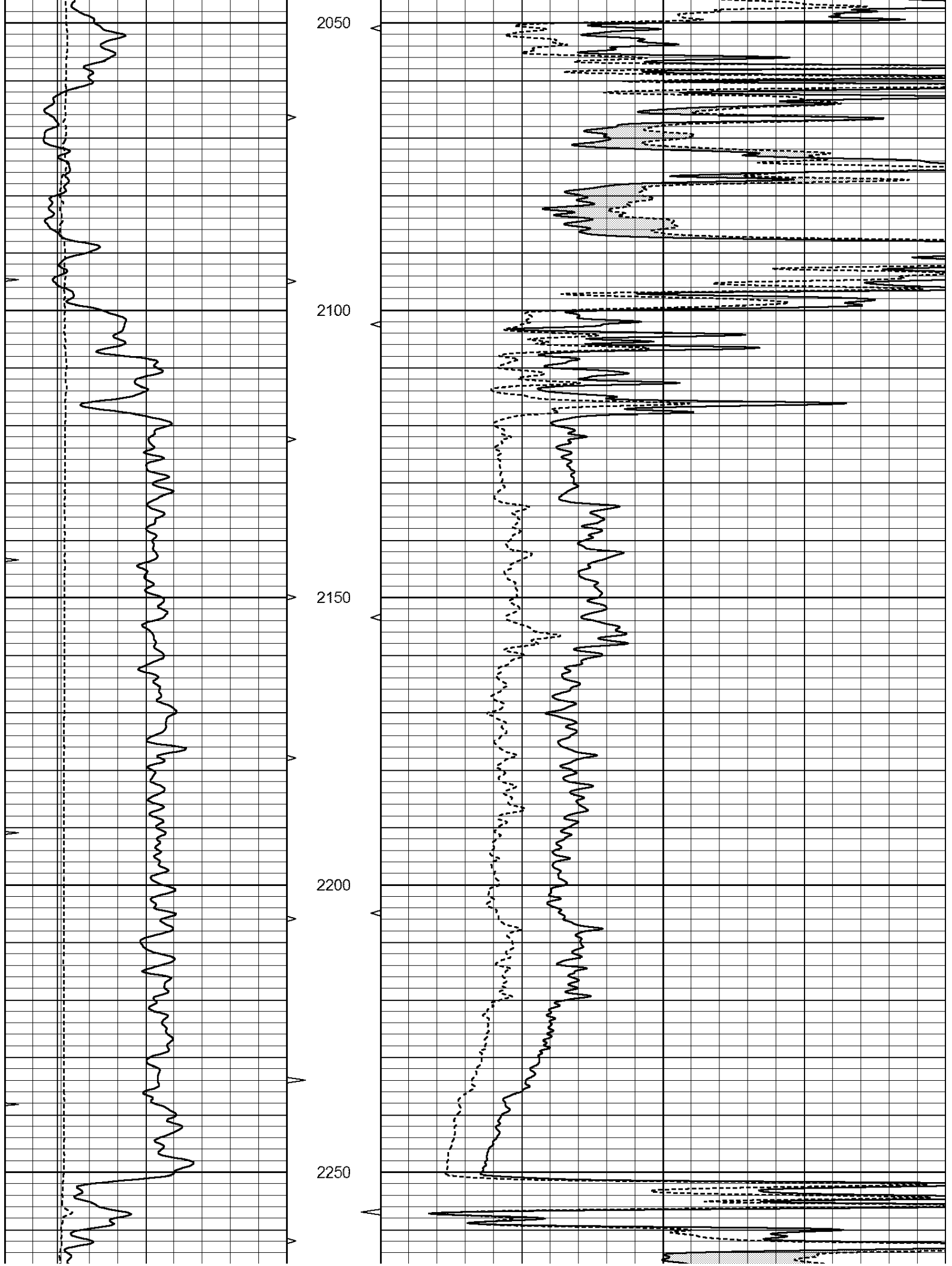
MAIN PASS

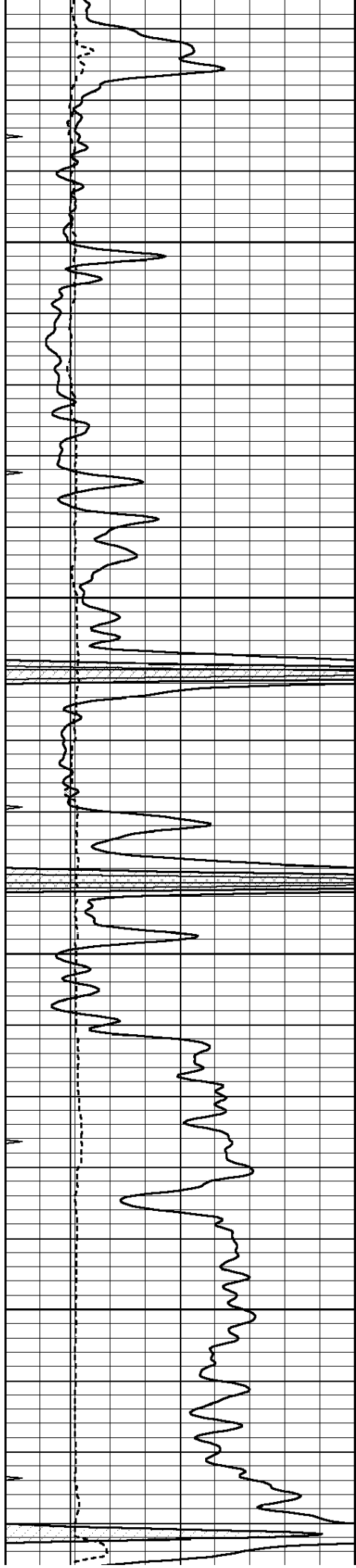
Database File: 4455pe.db
 Dataset Pathname: pass8M
 Presentation Format: _micro
 Dataset Creation: Fri Nov 01 12:45:06 2019
 Charted by: Depth in Feet scaled 1:240

0	GAMMA RAY (GAPI)	150	ABHV	0	MEL1.5 (Ohm-m)	40
6	CALIPER (in)	16	10 (ft3)	0	MEL2.0 (Ohm-m)	40
0	MINMK	20	TBHV			
			0 (ft3)	10		







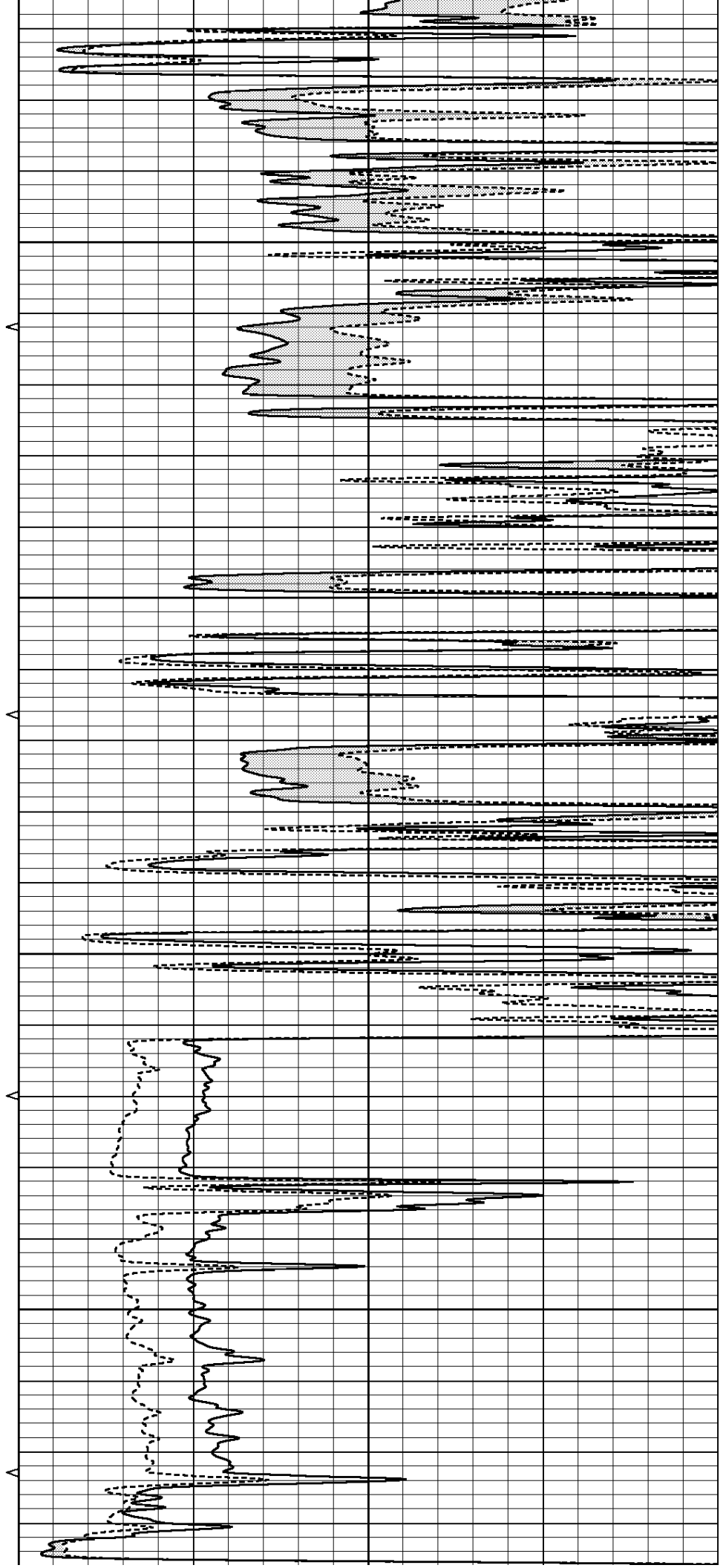


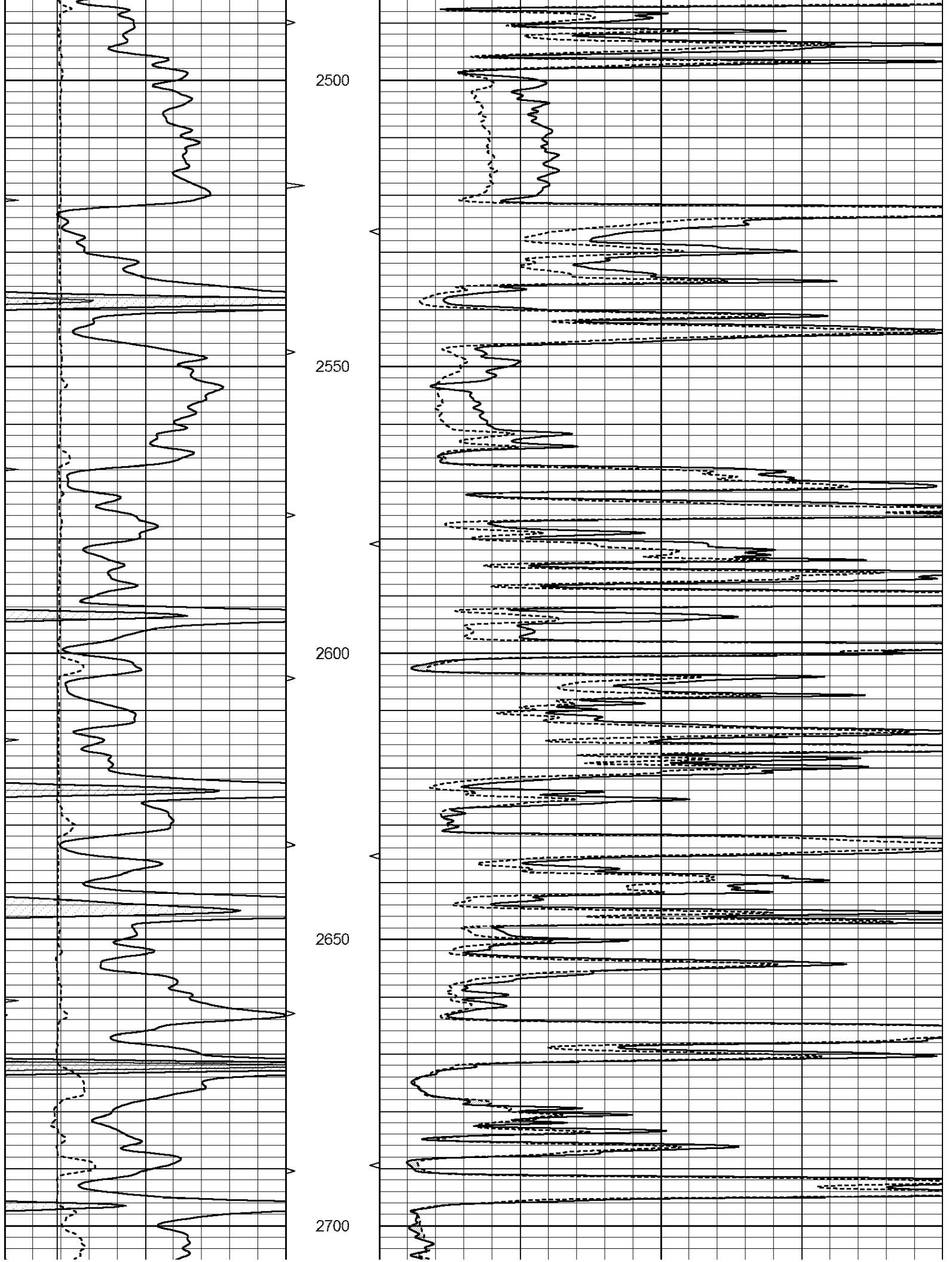
2300

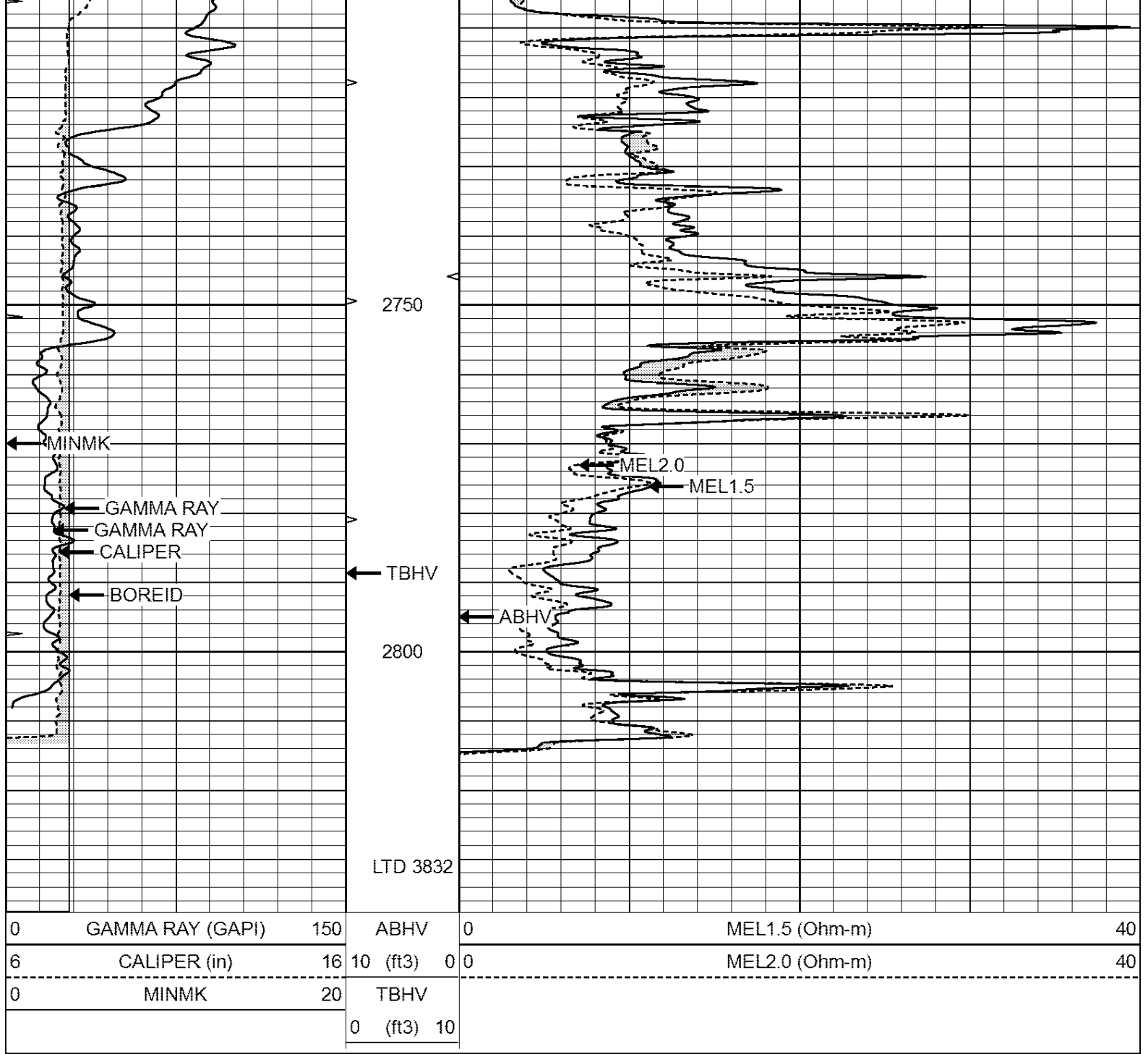
2350

2400

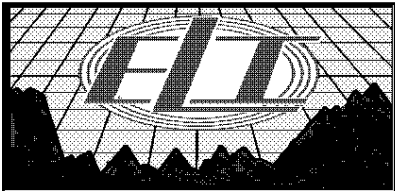
2450







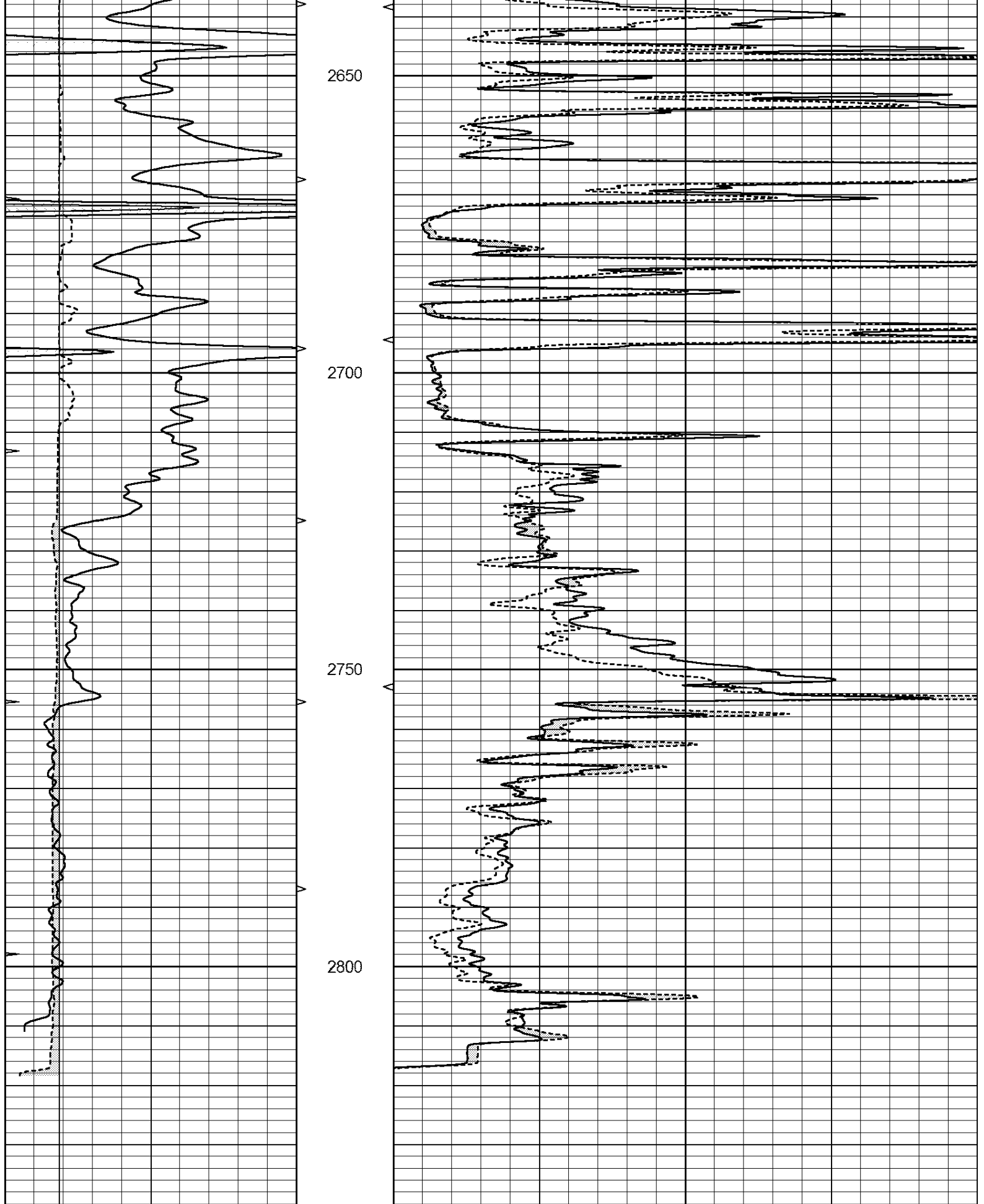
0	GAMMA RAY (GAPI)	150	ABHV	0	MEL1.5 (Ohm-m)	40
6	CALIPER (in)	16	10 (ft3)	0	MEL2.0 (Ohm-m)	40
0	MINMK	20	TBHV			
			0 (ft3)	10		



REPEAT SECTION

Database File: 4455pe.db
 Dataset Pathname: pass7.1
 Presentation Format: _micro
 Dataset Creation: Fri Nov 01 12:38:44 2019 by Calc Open-Cased 090629
 Charted by: Depth in Feet scaled 1:240

0	GAMMA RAY (GAPI)	150	ABHV	0	MEL1.5 (Ohm-m)	40
6	CALIPER (in)	16	10 (ft3)	0	MEL2.0 (Ohm-m)	40
0	MINMK	20	TBHV			
			0 (ft3)	10		



0	GAMMA RAY (GAPI)	150	ABHV	0	MEL1.5 (Ohm-m)	40
6	CALIPER (in)	16	10 (ft3)	0	MEL2.0 (Ohm-m)	40
0	MINMK	20	TBHV			
			0 (ft3)	10		

Calibration Report

Database File: 4455pe.db
 Dataset Pathname: pass7.1
 Dataset Creation: Fri Nov 01 12:38:44 2019 by Calc Open-Cased 090629

MICRO Calibration Report

Serial Number: Micro1
 Tool Model: ProbeL
 Performed: Sat Oct 26 06:47:35 2019

Caliper Calibration:	Gain=2.030	Offset=6.505
	Low Cal	High Cal
References	9.500	13.000
Readings	0.308	2.032

1.5" Calibration:	Gain=36.134	Offset=-1.200
	Low Cal	High Cal
References	0.000	20.000
Readings	0.004	0.832

2" Calibration:	Gain=40.000	Offset=-0.300
	Low Cal	High Cal
References	0.000	20.000
Readings	0.022	0.793

Gamma Ray Calibration Report

Serial Number: GR5
 Tool Model: OPEN
 Performed: Thu Oct 24 16:06:54 2019

Calibrator Value:	1.0	GAPI
Background Reading:	0.0	cps
Calibrator Reading:	1.0	cps
Sensitivity:	0.5800	GAPI/cps