



MICRO LOG

Company L.D. DRILLING, INC.  
Well #4-10 WATT  
Field DOLL EAST  
County LANE  
State KANSAS

Company L.D. DRILLING, INC.  
Well #4-10 WATT  
Field DOLL EAST  
County LANE State KANSAS

Location: 330' FSL & 840' FWL  
W/2 - SE - SW - SE  
APL # : 15-101-22636-0000  
Permanent Datum GROUND LEVEL Elevation 2733  
Log Measured From KELLY BUSHING 5' A.G.L.  
Drilling Measured From KELLY BUSHING  
SEC 10 TWP 16S RGE 30W  
Other Services CDL/CNL DIL/SON  
Elevation K.B. 2738 D.F. 2736 G.L. 2733

Date	11/8/79
Run Number	TWO
Depth Driller	4550
Depth Logger	4550
Bottom Logged Interval	4534
Top Log Interval	3300
Casing Driller	8 5/8" @ 285'
Casing Logger	286
Bit Size	7 7/8"
Type Fluid in Hole	CHEMICAL MUD
Density / Viscosity	9.7/61
pH / Fluid Loss	10.0/10.4
Source of Sample	FLOWLINE
Rim @ Meas. Temp	.940 @ 74F
Rmf @ Meas. Temp	.705 @ 74F
Rmc @ Meas. Temp	1.13 @ 74F
Source of Rmf / Rmc	MEASUREMENT
Rim @ BHT	.575 @ 121F
Time Circulation Stopped	4 HOURS
Time Logger on Bottom	5:15 A.M.
Maximum Recorded Temperature	121F
Equipment Number	922339
Location	HAYS, KANSAS
Recorded By	JEFF LUEBBERS
Witnessed By	KIM SHOEMAKER

<<< Fold Here >>>

All interpretations are opinions based on inferences from electrical or other measurements and we cannot and do not guarantee the accuracy or correctness of any interpretation, and we shall not, except in the case of gross or willful negligence on our part, be liable or responsible for any loss, costs, damages, or expenses incurred or sustained by anyone resulting from any interpretation made by any of our officers, agents or employees. These interpretations are also subject to our general terms and conditions set out in our current Price Schedule.

Comments

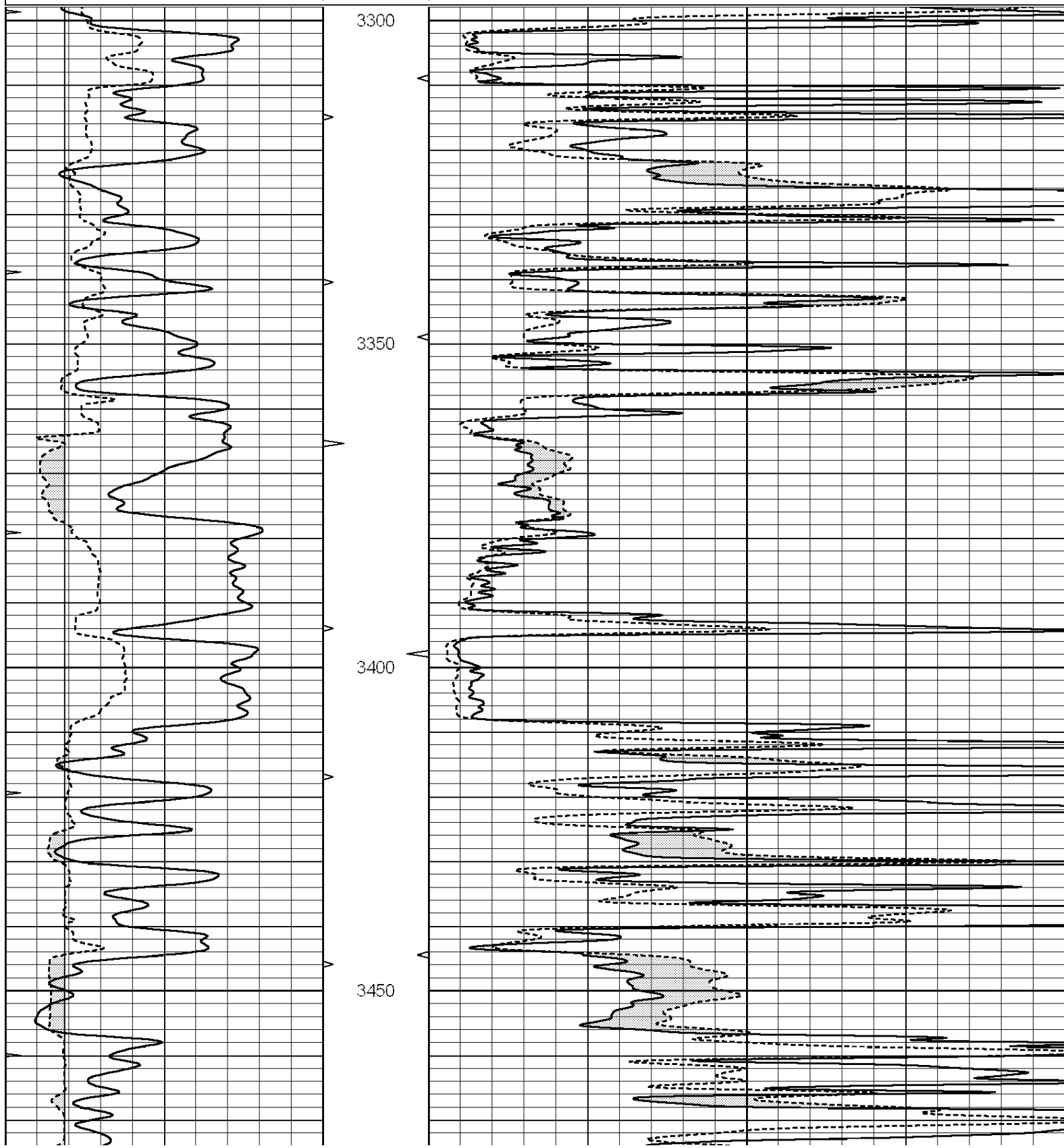
THANK YOU FOR USING ELI WIRELINE HAYS, KANSAS (785) 628-6395  
DIRECTIONS  
HEALY, KS., 5N. ON "DODGE RD." 1/2 W. INTO @ TANK BATTERY

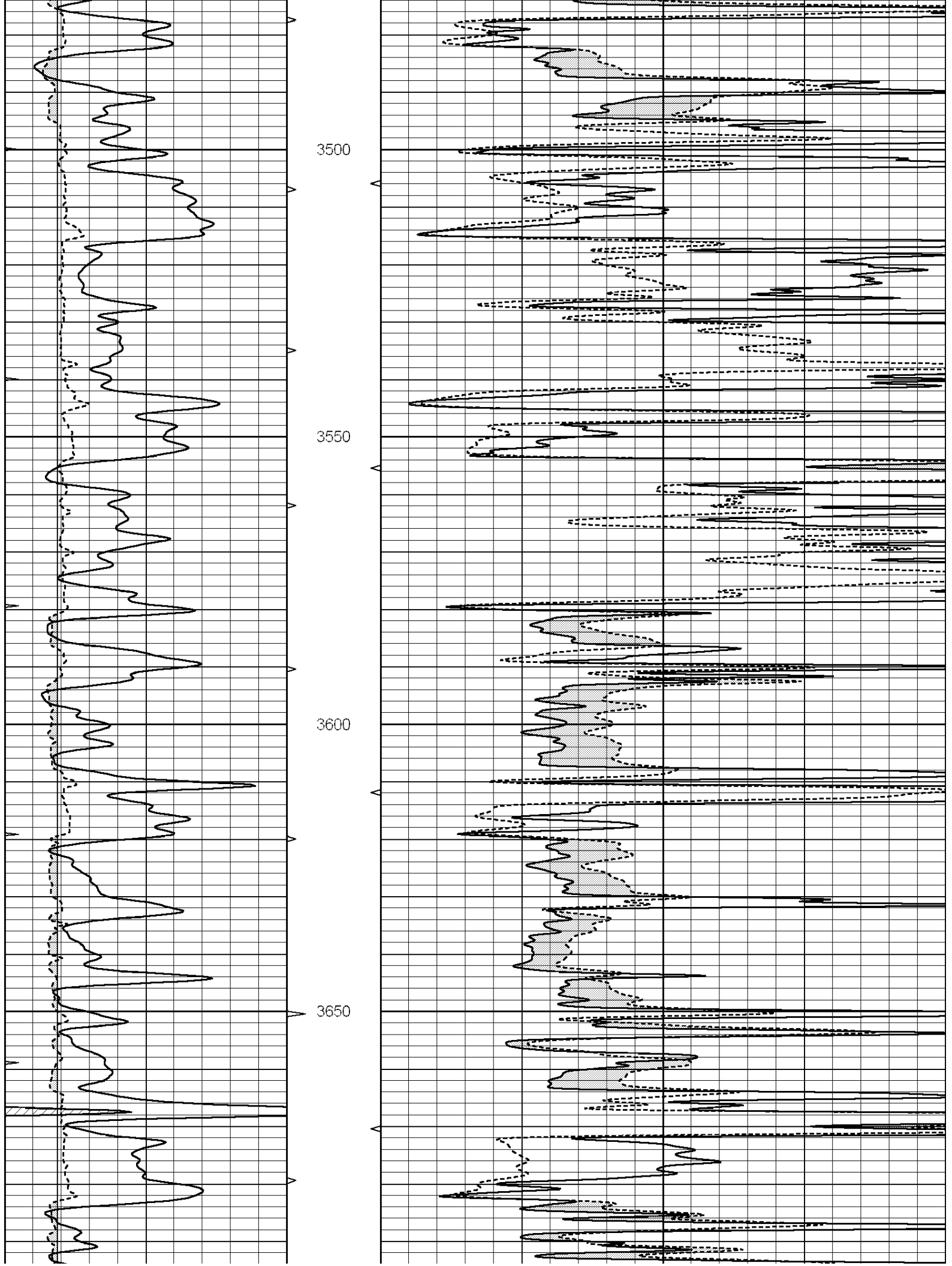


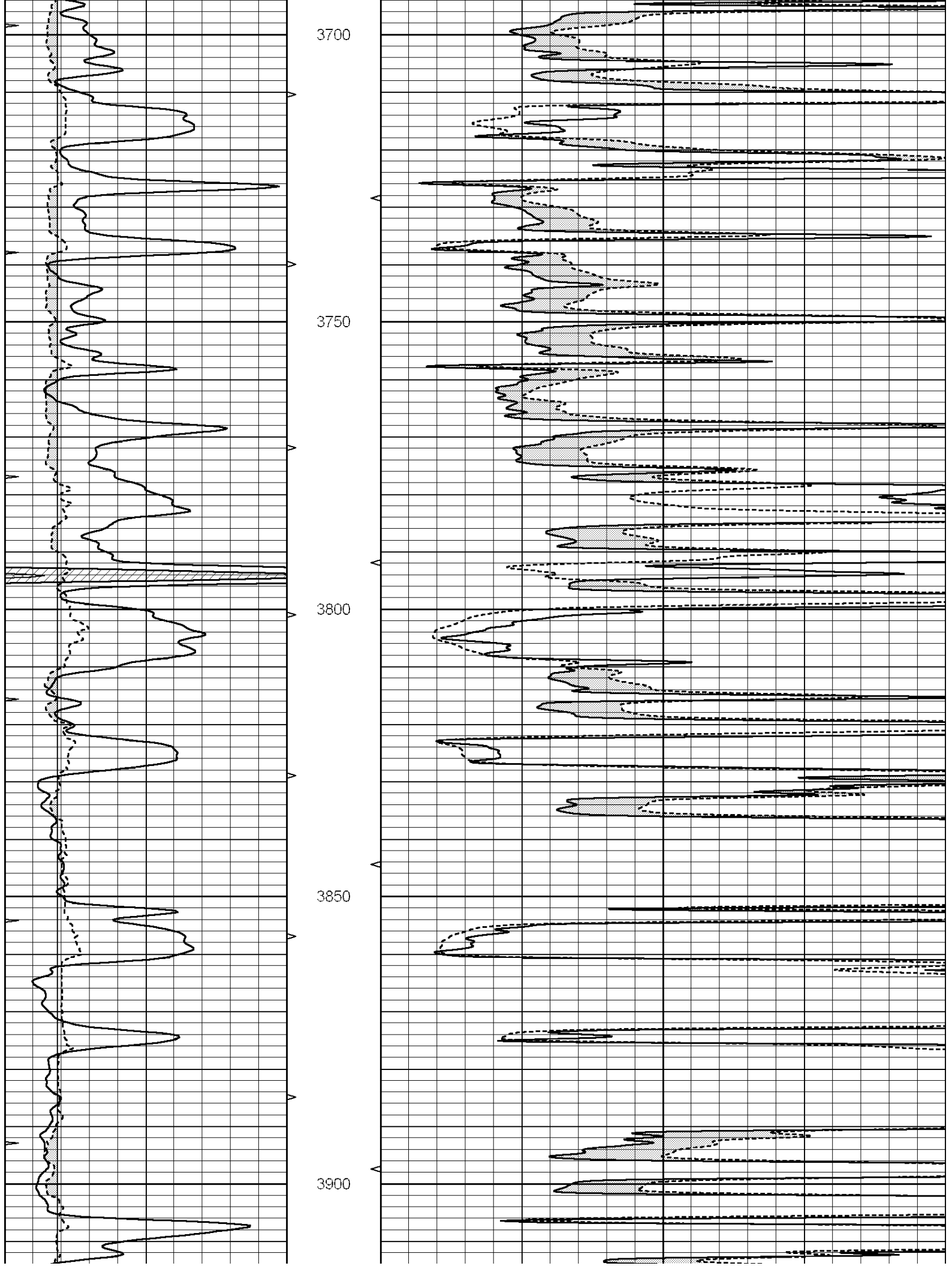
MAIN SECTION

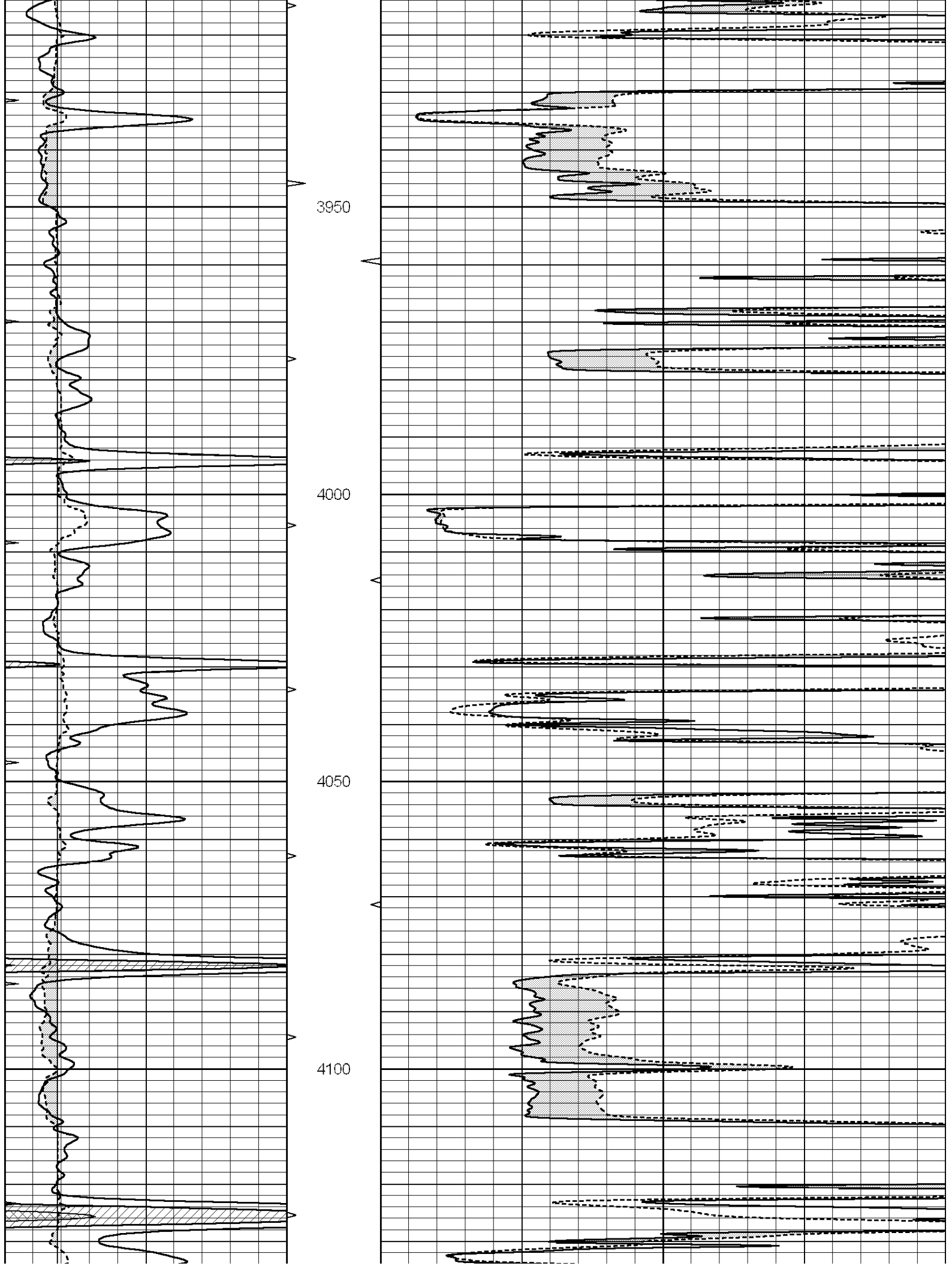
Database File: 4380ddn.db  
 Dataset Pathname: pass7.1  
 Presentation Format: micro  
 Dataset Creation: Fri Nov 08 06:06:58 2019 by Calc SOC 120430  
 Charted by: Depth in Feet scaled 1:240

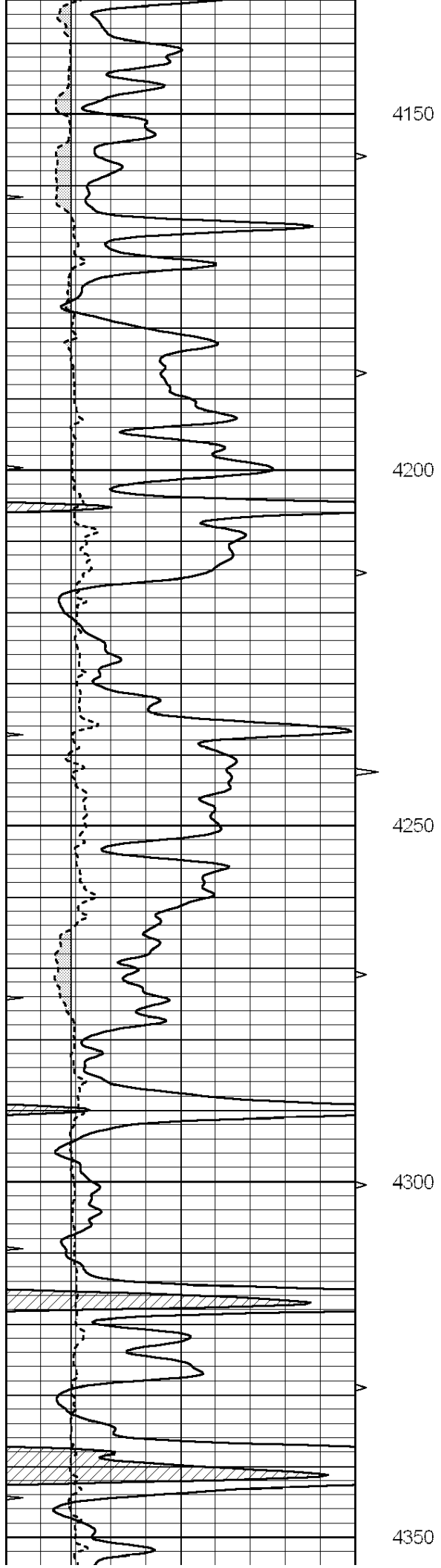
0	GAMMA RAY (GAPI)	150	ABHV	0	MEL1.5 (Ohm-m)	40
6	CALIPER (in)	16	10 (ft3)	0	MEL 20 (Ohm-m)	40
0	MINMK	20	TBHV			
			0 (ft3)	10		











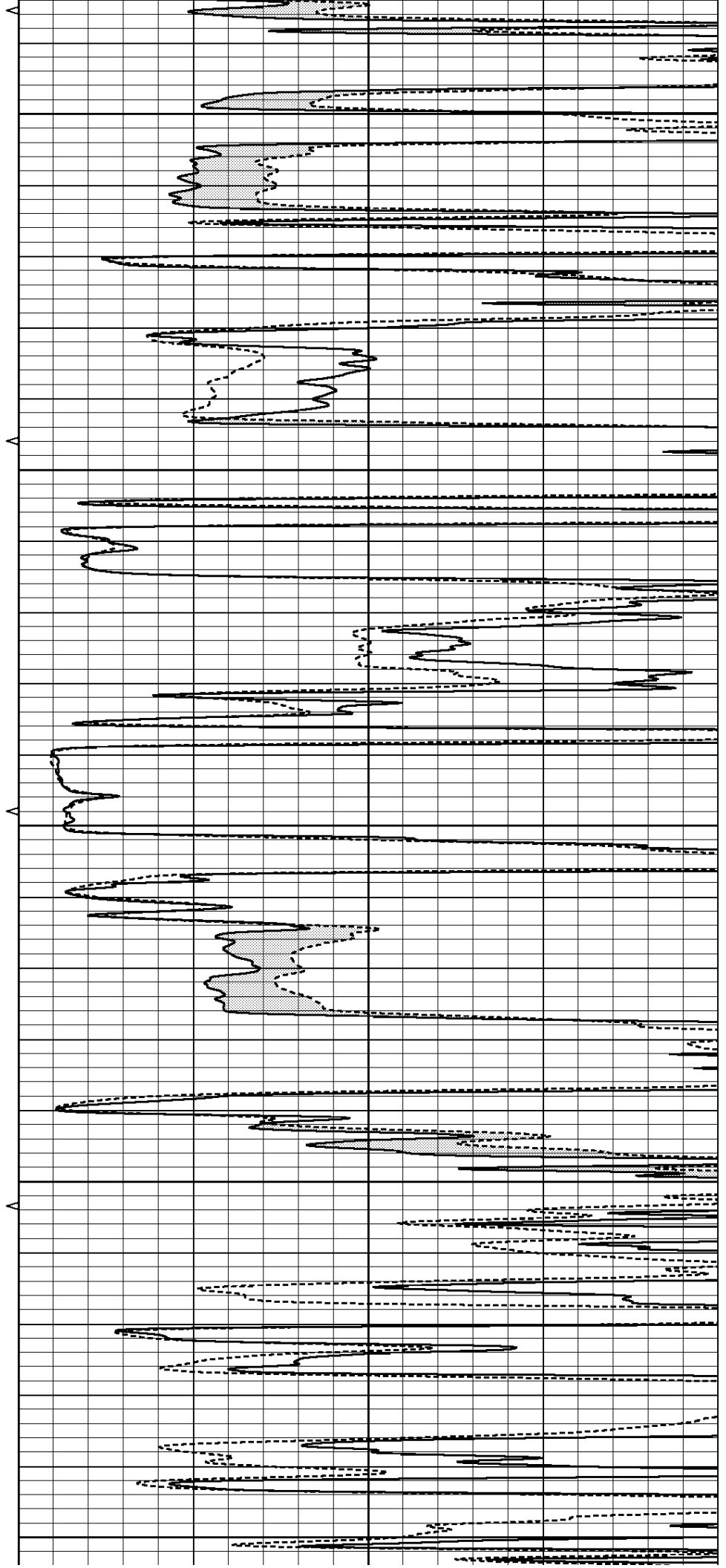
4150

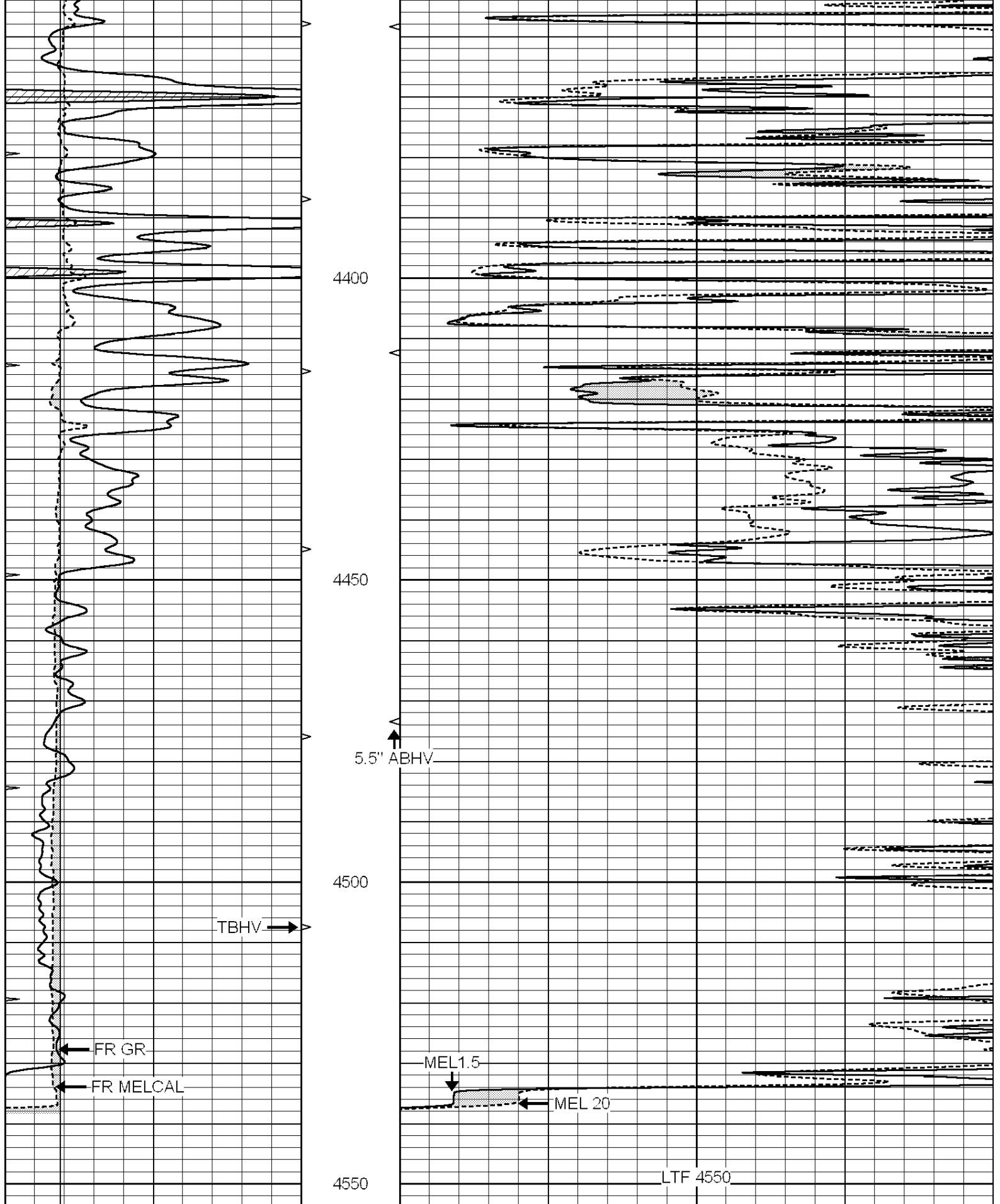
4200

4250

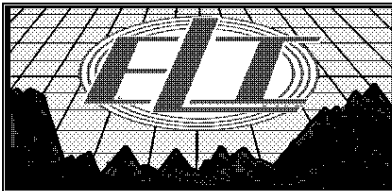
4300

4350





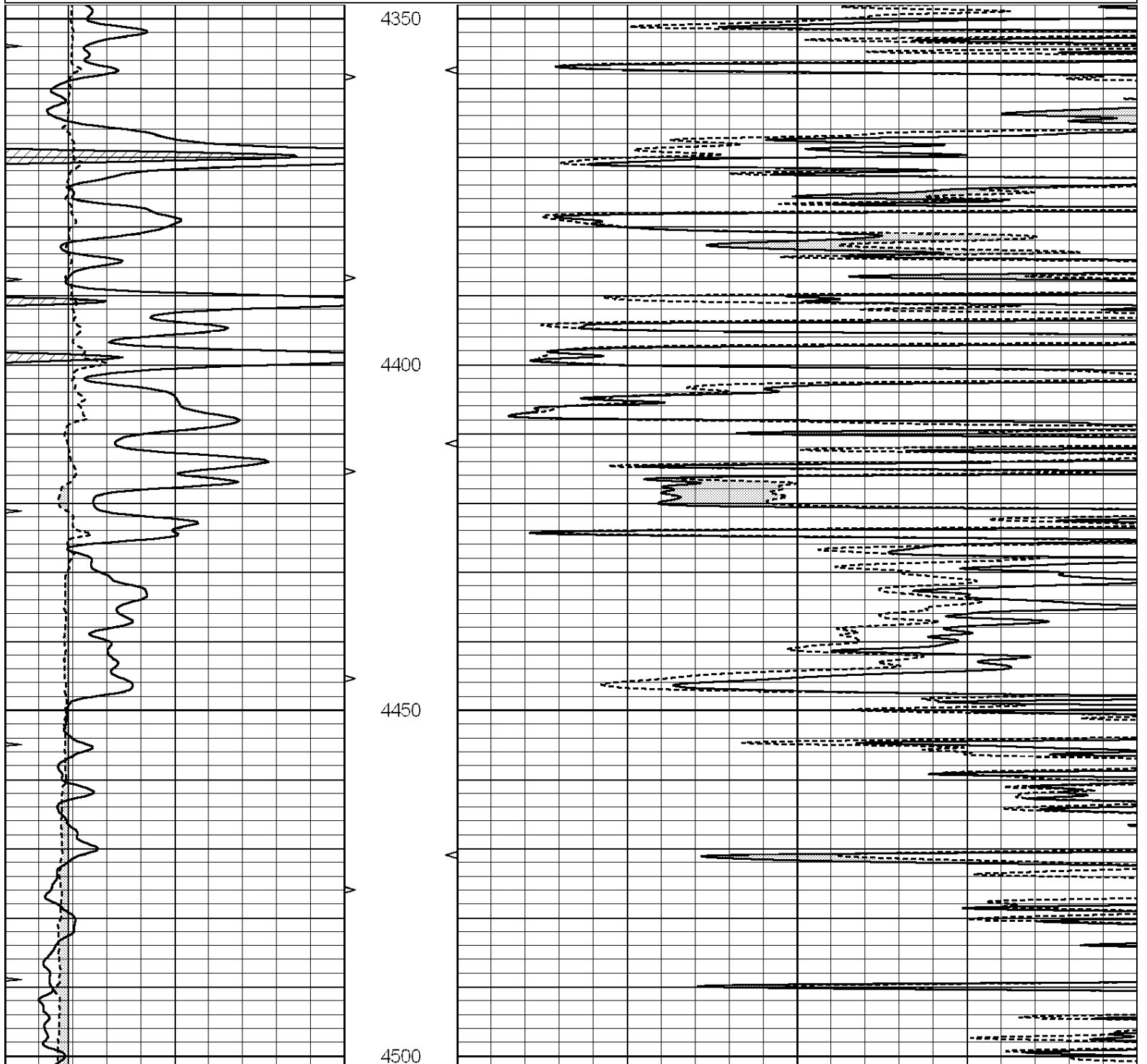
0	GAMMA RAY (GAPI)	150	ABHV	0	MEL1.5 (Ohm-m)	40
6	CALIPER (in)	16	10 (ft3)	0	MEL 20 (Ohm-m)	40
0	MINMK	20	TBHV			
			0 (ft3)	10		

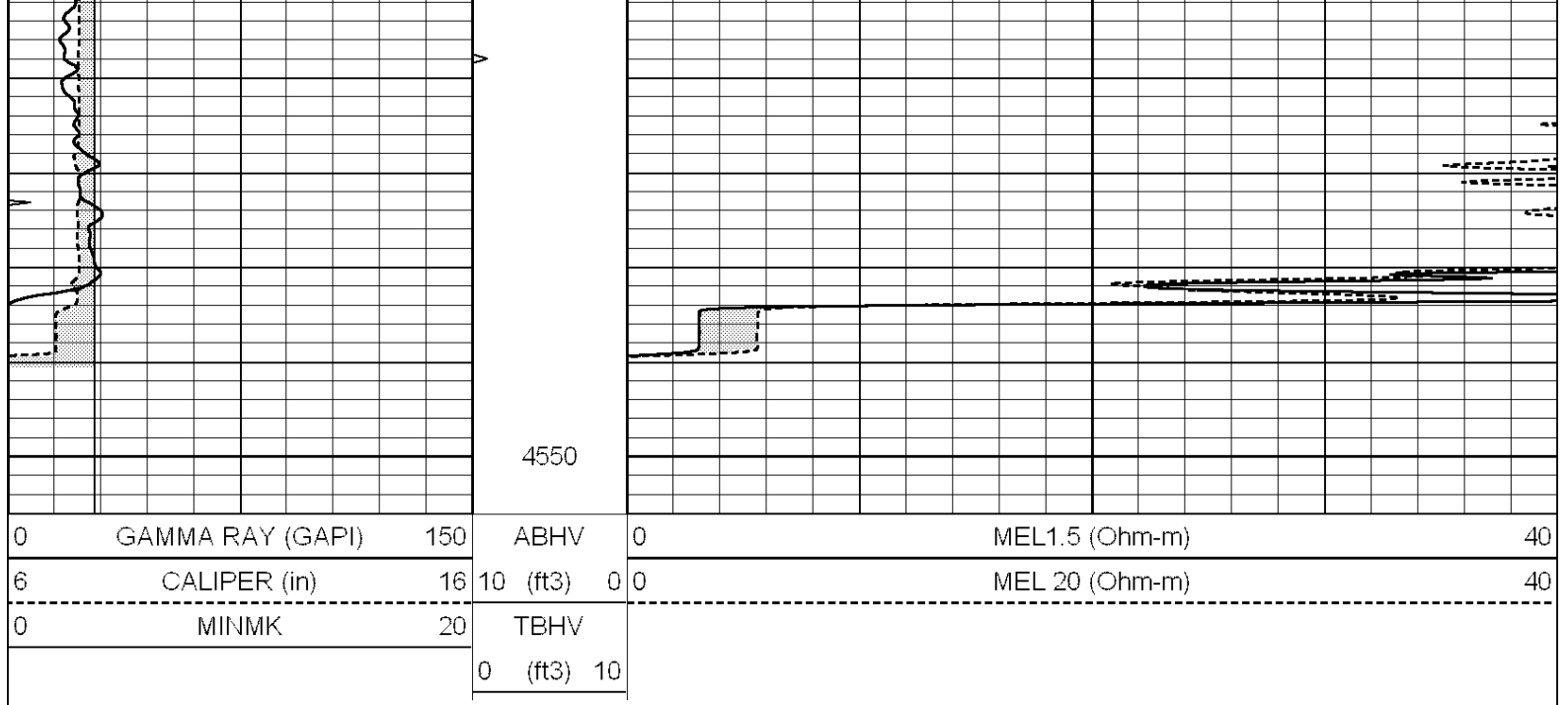


# REPEAT SECTION

Database File: 4380ddn.db  
 Dataset Pathname: pass6.1  
 Presentation Format: micro  
 Dataset Creation: Fri Nov 08 05:19:57 2019 by Calc SOC 120430  
 Charted by: Depth in Feet scaled 1:240

0	GAMMA RAY (GAPI)	150	ABHV	0	MEL1.5 (Ohm-m)	40
6	CALIPER (in)	16	10 (ft3)	0 0	MEL 20 (Ohm-m)	40
0	MINMK	20	TBHV			
			0 (ft3)	10		





### Calibration Report

Database File: 4380ddn.db  
 Dataset Pathname: pass7.1  
 Dataset Creation: Fri Nov 08 06:06:58 2019 by Calc SOC 120430

#### MICRO Calibration Report

Serial Number:	070911		
Tool Model:	ProbeN		
Performed:	Fri Nov 08 05:19:14 2019		
Caliper Calibration:	Gain=6.667	Offset=-0.667	
	Low Cal	High Cal	
References	8.000	16.000	
Readings	1.300	2.500	
1.5" Calibration:	Gain=44.000	Offset=-2.000	
	Low Cal	High Cal	
References	0.000	20.000	
Readings	0.001	1.240	
2" Calibration:	Gain=52.000	Offset=-2.000	
	Low Cal	High Cal	
References	0.000	20.000	
Readings	0.001	1.076	

#### Gamma Ray Calibration Report

Serial Number:	070559		
Tool Model:	OPEN_GR		
Performed:	Fri Oct 25 19:48:05 2019		
Calibrator Value:	1.0	GAPI	
Background Reading:	0.0	cps	
Calibrator Reading:	1.0	cps	
Sensitivity:	0.2600	GAPI/cps	