



SONIC LOG

Company L.D. DRILLING, INC.
Well #4-10 WATT
Field DOLL EAST
County LANE
State KANSAS

Company L.D. DRILLING, INC.
Well #4-10 WATT
Field DOLL EAST
County LANE State KANSAS

Location: 330' FSL & 840' FWL
W/2 - SE - SW - SE
API # : 15-101-22636-0000
Permanent Datum GROUND LEVEL Elevation 2733
Log Measured From KELLY BUSHING 5' A.G.L.
Drilling Measured From KELLY BUSHING
SEC 10 TWP 16S RGE 30W
Other Services CDL/CNL DIL/MEL
Elevation K.B. 2738 D.F. 2736 G.L. 2733

Date	11/8/79
Run Number	TWO
Depth Driller	4550
Depth Logger	4550
Bottom Logged Interval	4542
Top Log Interval	200
Casing Driller	8 5/8"@285'
Casing Logger	286
Bit Size	7 7/8"
Type Fluid in Hole	CHEMICAL MUD
Density / Viscosity	9.7/61
pH / Fluid Loss	10.0/10.4
Source of Sample	FLOWLINE
Rim @ Meas. Temp	.940@74F
Rmf @ Meas. Temp	.705@74F
Rmc @ Meas. Temp	1.13@74F
Source of Rmf / Rmc	MEASUREMENT
Rim @ BHT	.575@121F
Time Circulation Stopped	4 HOURS
Time Logger on Bottom	5:15 A.M.
Maximum Recorded Temperature	121F
Equipment Number	922339
Location	HAYS, KANSAS
Recorded By	JEFF LUEBBERS
Witnessed By	KIM SHOEMAKER

<<< Fold Here >>>

All interpretations are opinions based on inferences from electrical or other measurements and we cannot and do not guarantee the accuracy or correctness of any interpretation, and we shall not, except in the case of gross or willful negligence on our part, be liable or responsible for any loss, costs, damages, or expenses incurred or sustained by anyone resulting from any interpretation made by any of our officers, agents or employees. These interpretations are also subject to our general terms and conditions set out in our current Price Schedule.

Comments

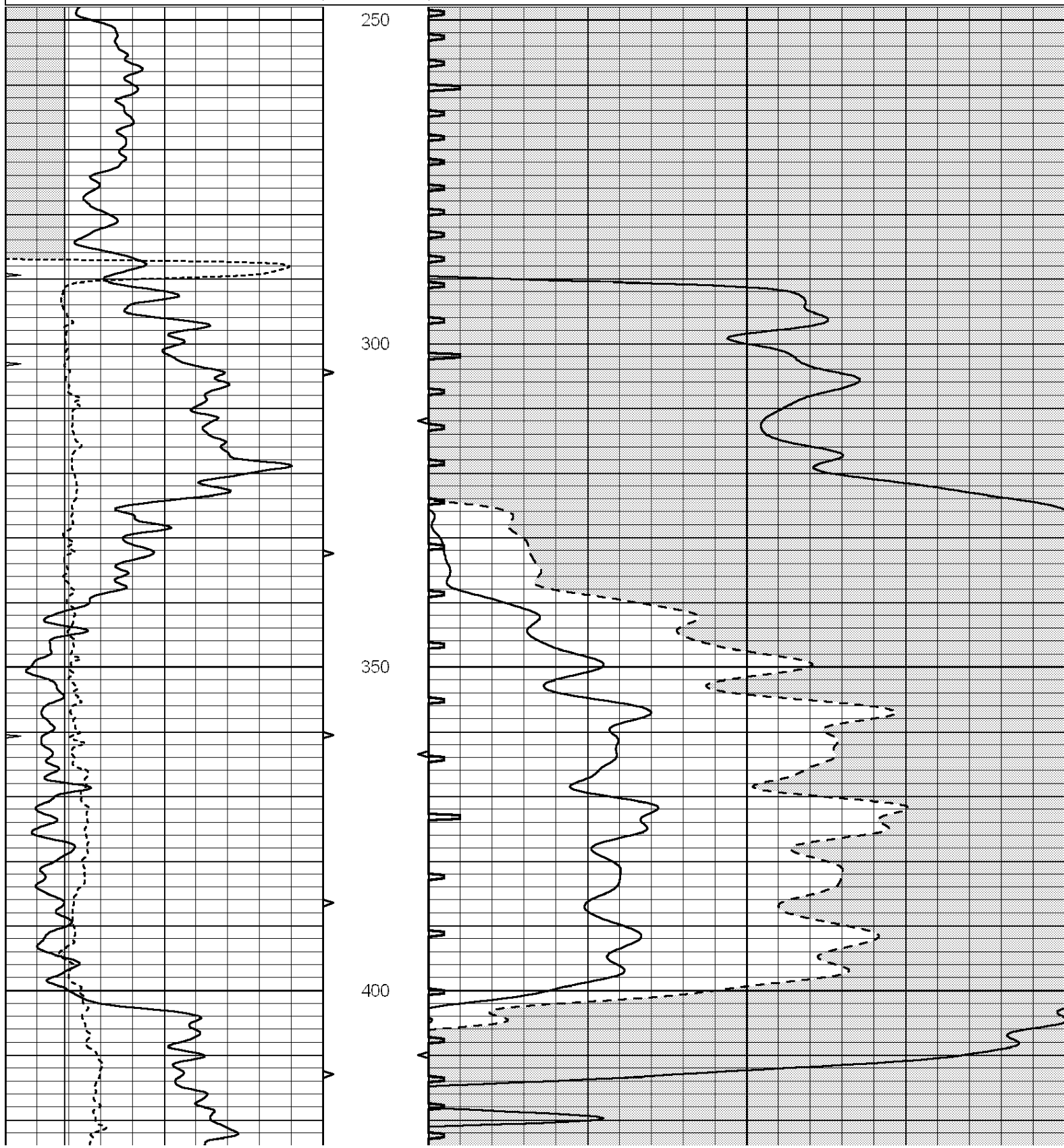
THANK YOU FOR USING ELI WIRELINE HAYS, KANSAS (785) 628-6395
DIRECTIONS
HEALY, KS., 5N. ON "DODGE RD." 1/2 W. INTO @ TANK BATTERY

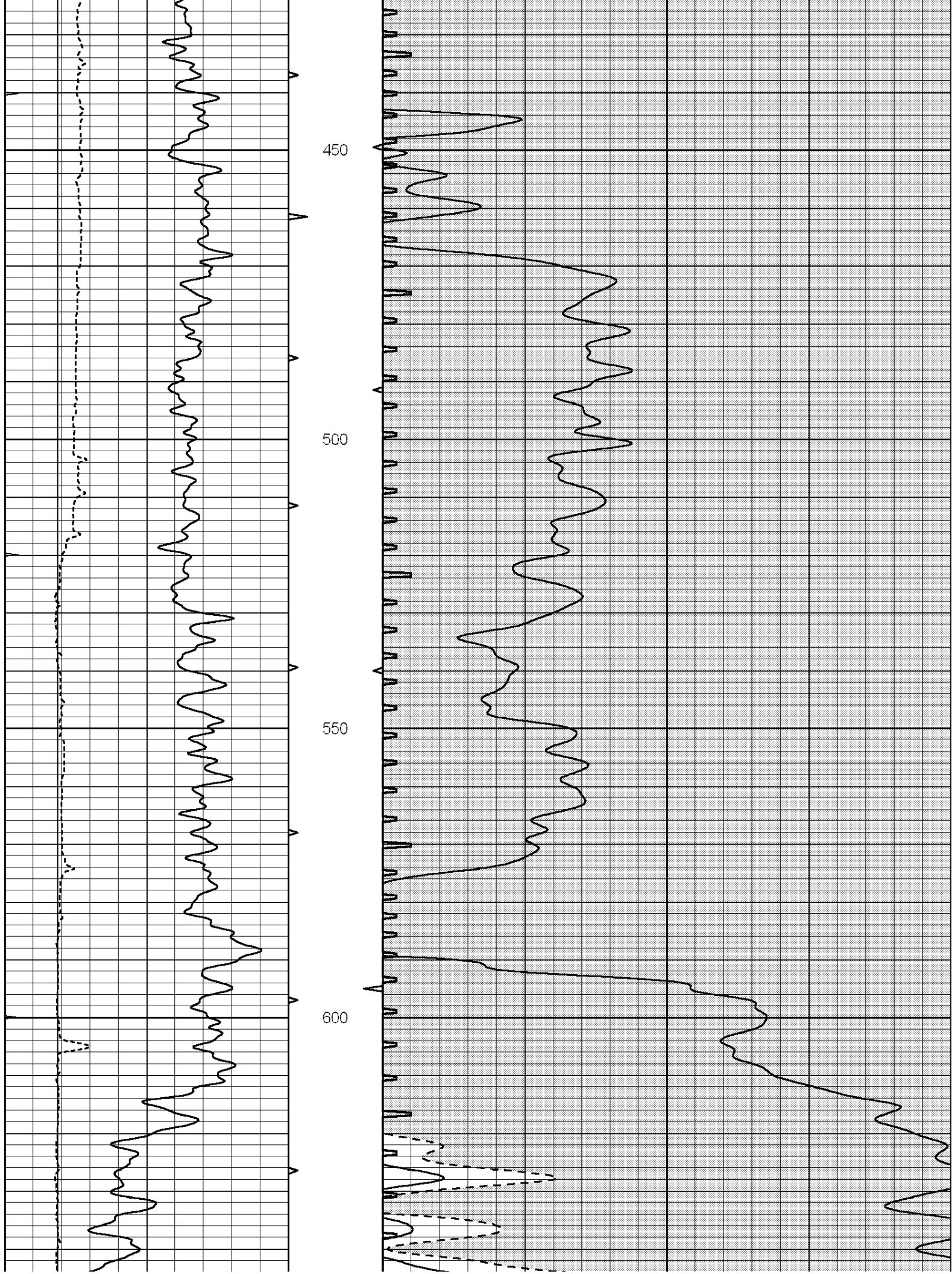


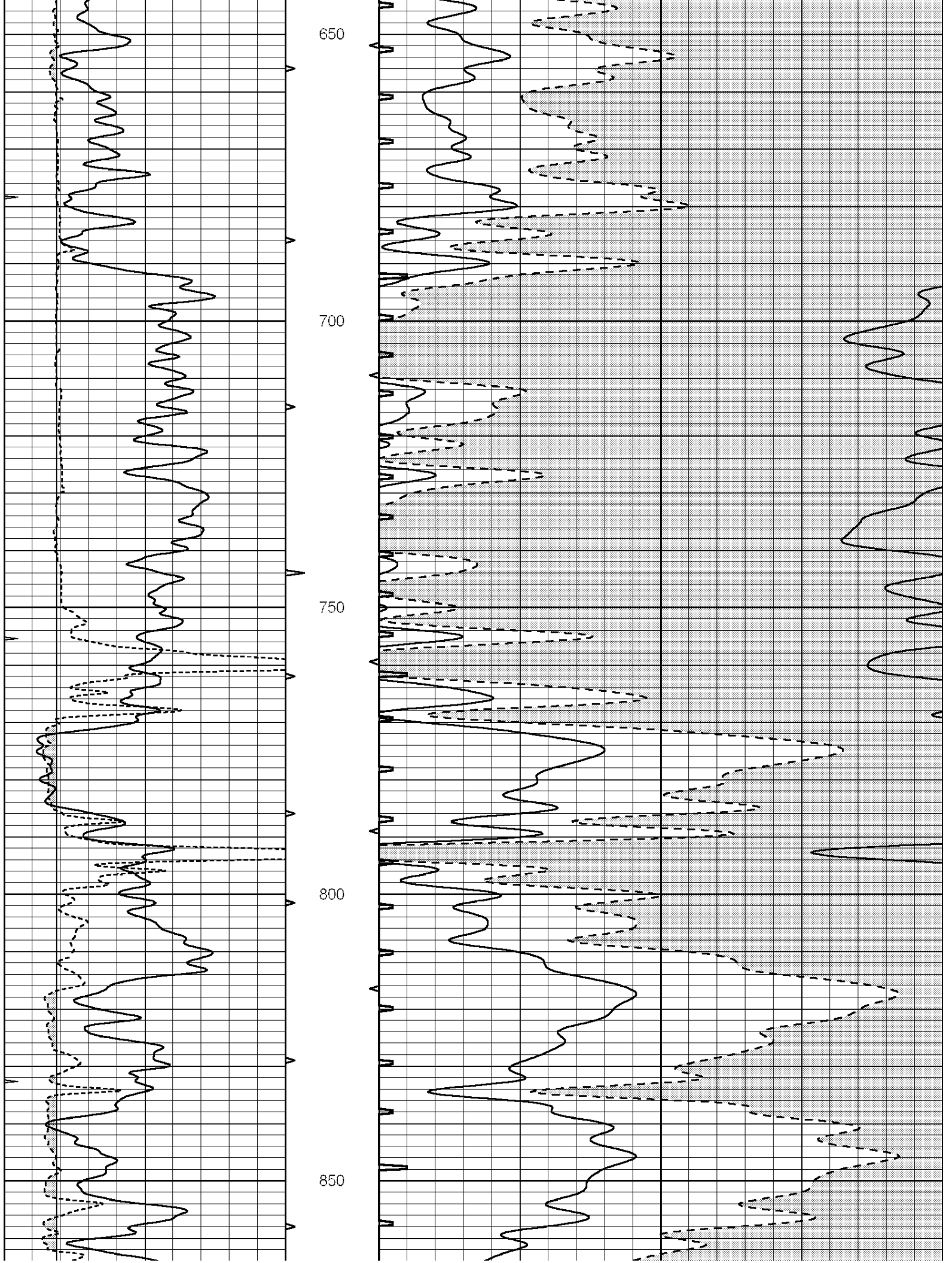
MAIN SECTION

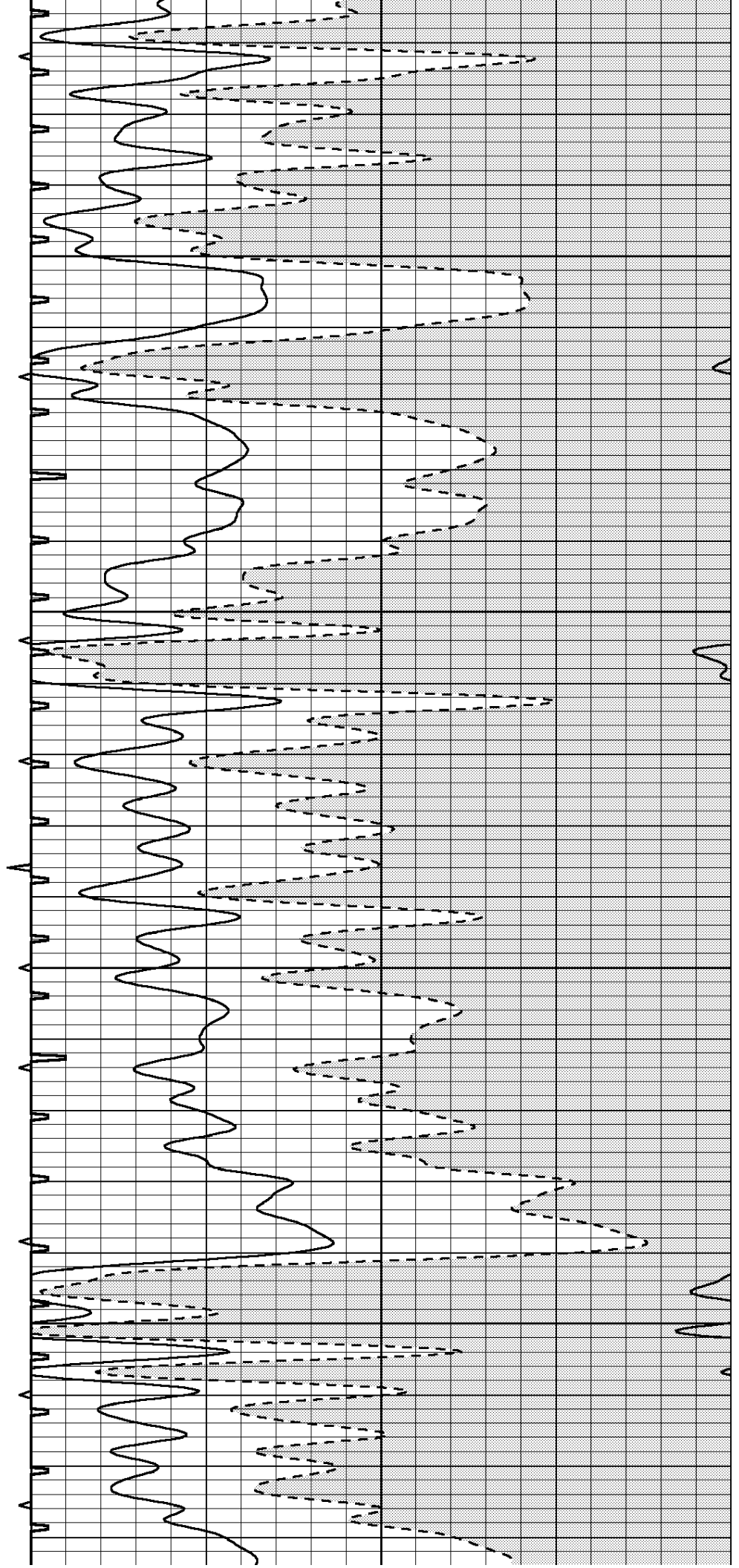
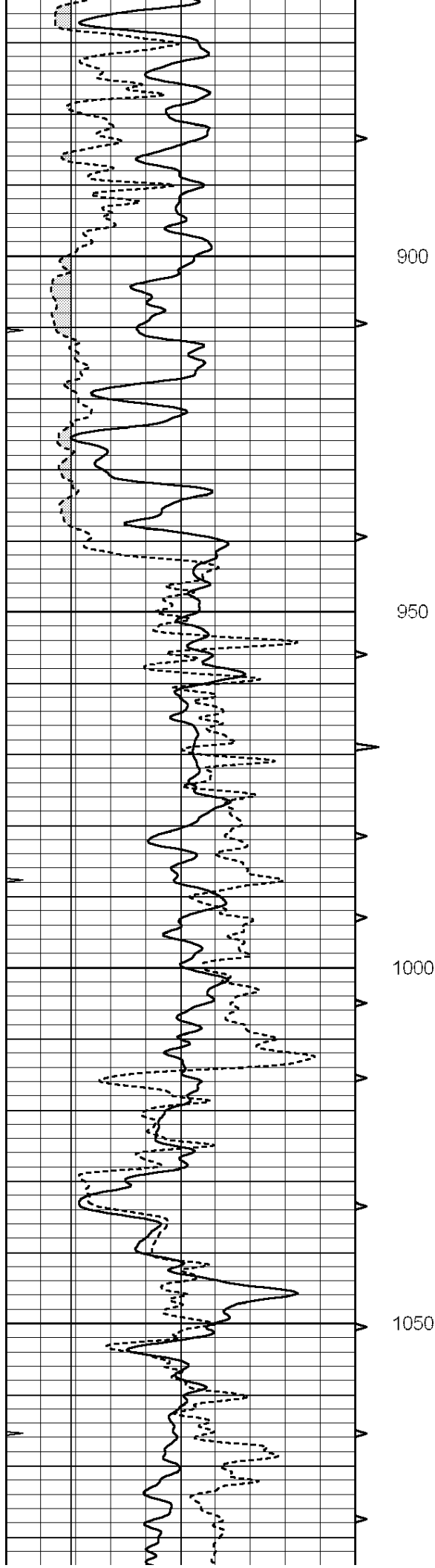
Database File: 4380ddn.db
 Dataset Pathname: pass7.2
 Presentation Format: slt
 Dataset Creation: Fri Nov 08 06:41:31 2019 by Calc SOC 120430
 Charted by: Depth in Feet scaled 1:240

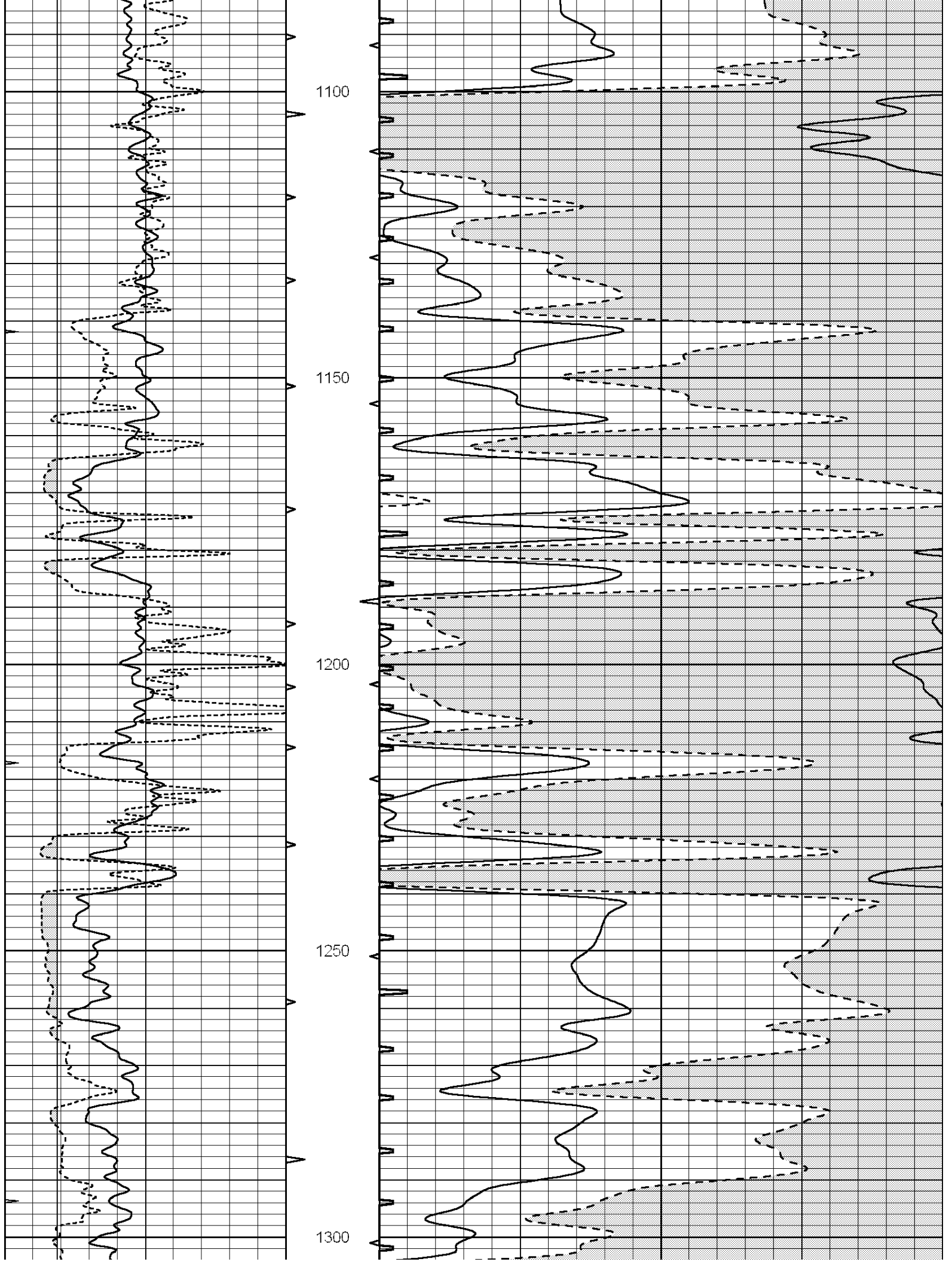
0	GAMMA RAY (GAPI)	150	ABHV	140	DELTA TIME (usec/ft)	40
6	CALIPER (in)	16	10 (ft3)	0	30	SONIC POROSITY (pu)
0	MINMK	20	TBHV	0	ITT (msec)	20
			0 (ft3)	10		

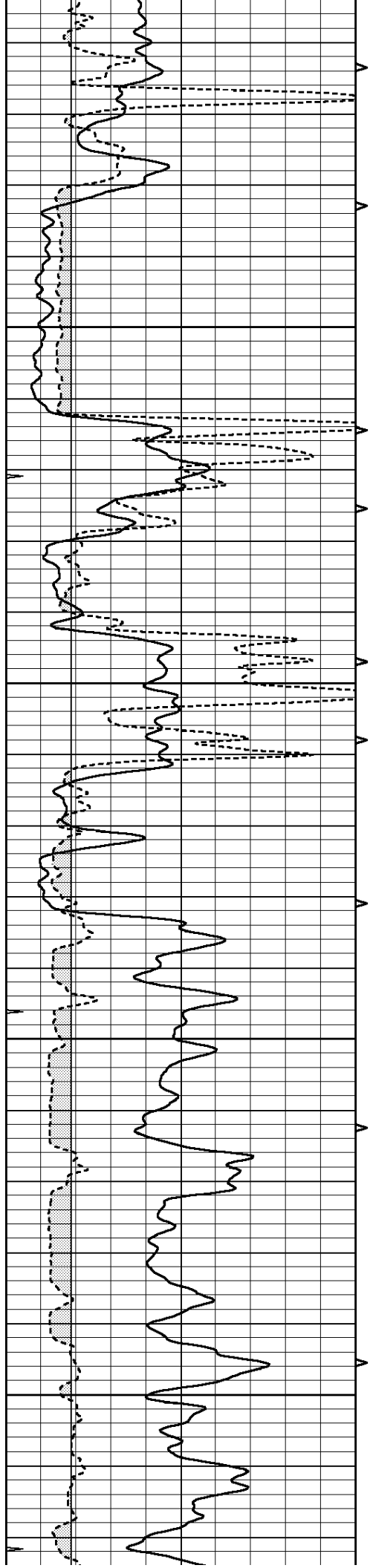










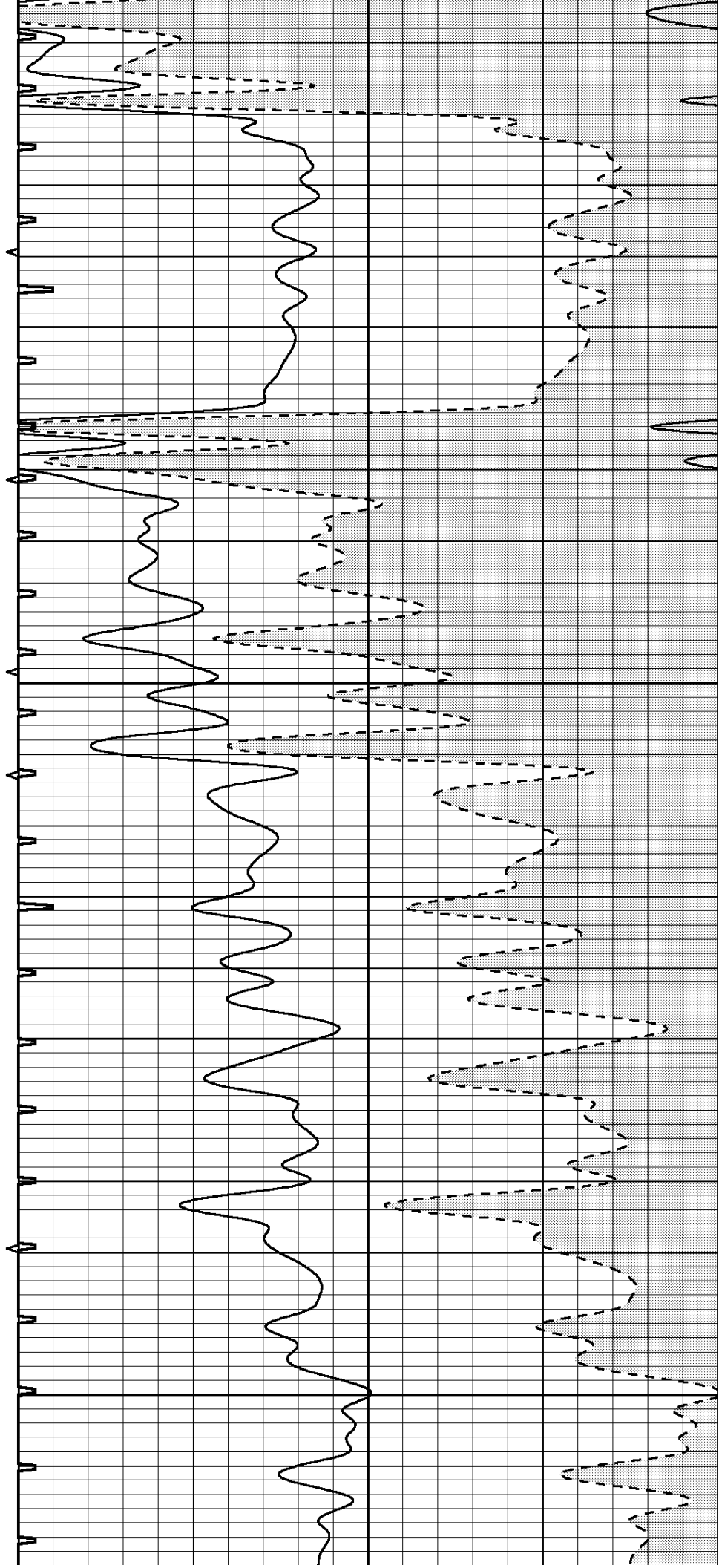


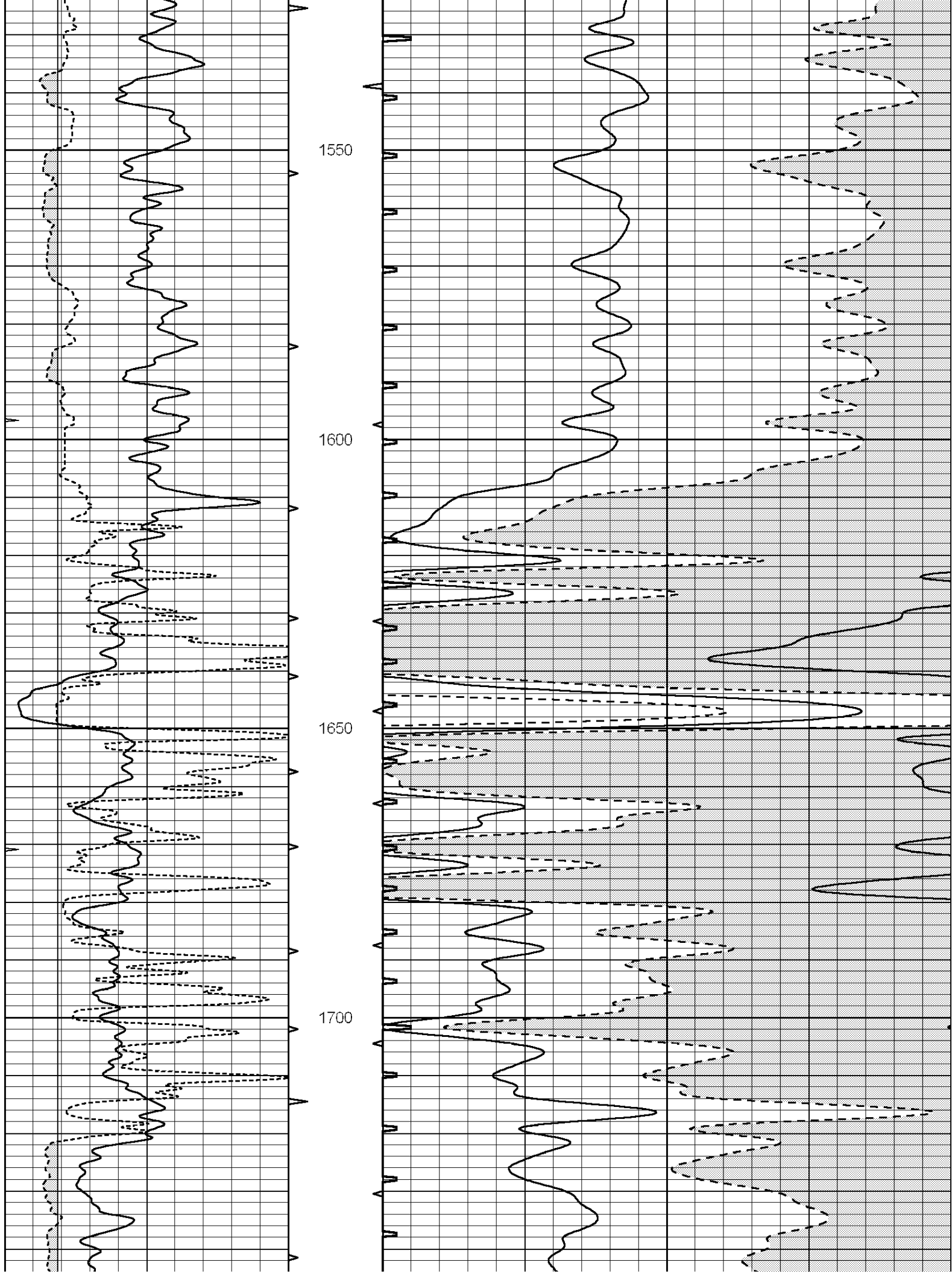
1350

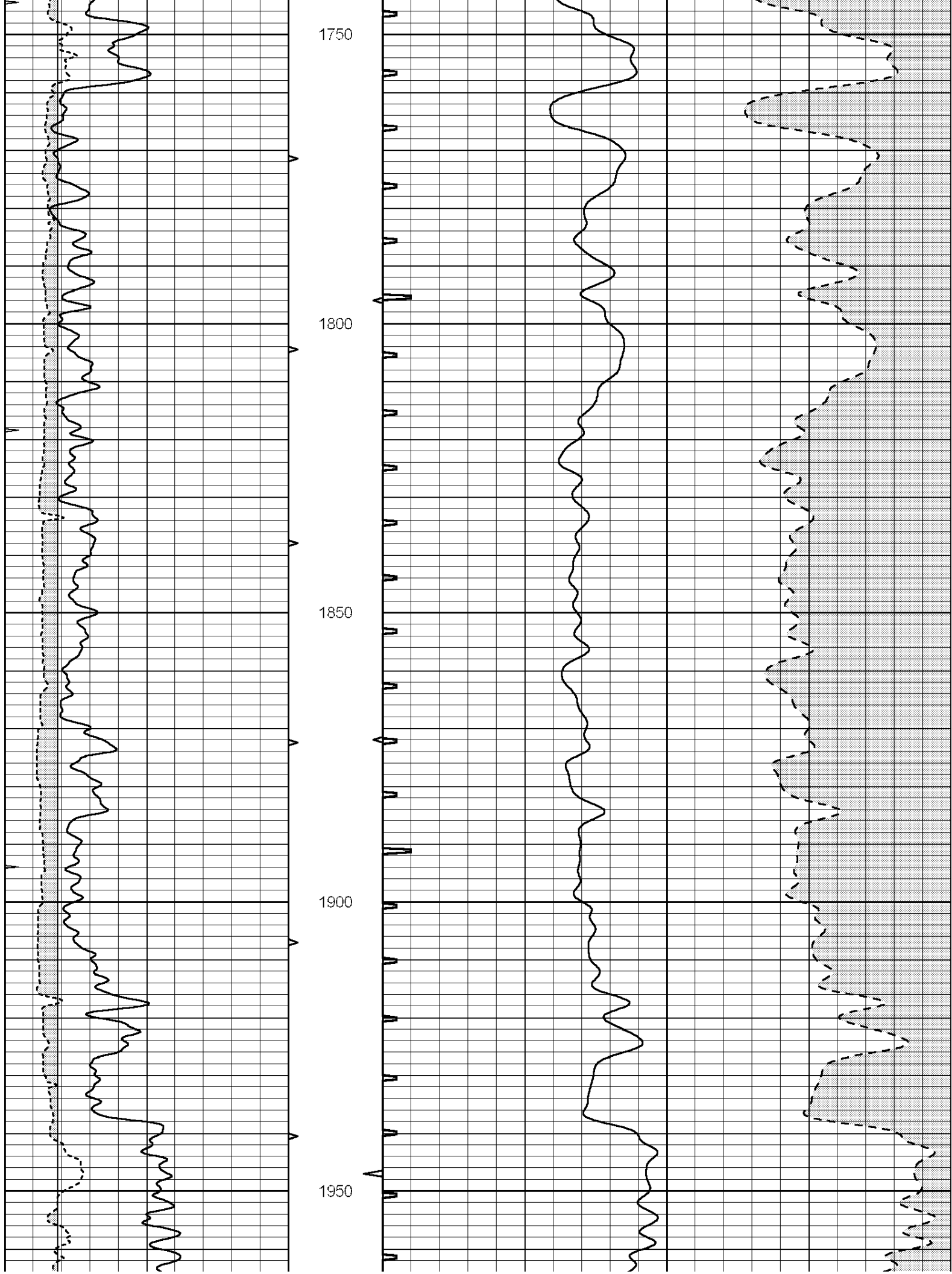
1400

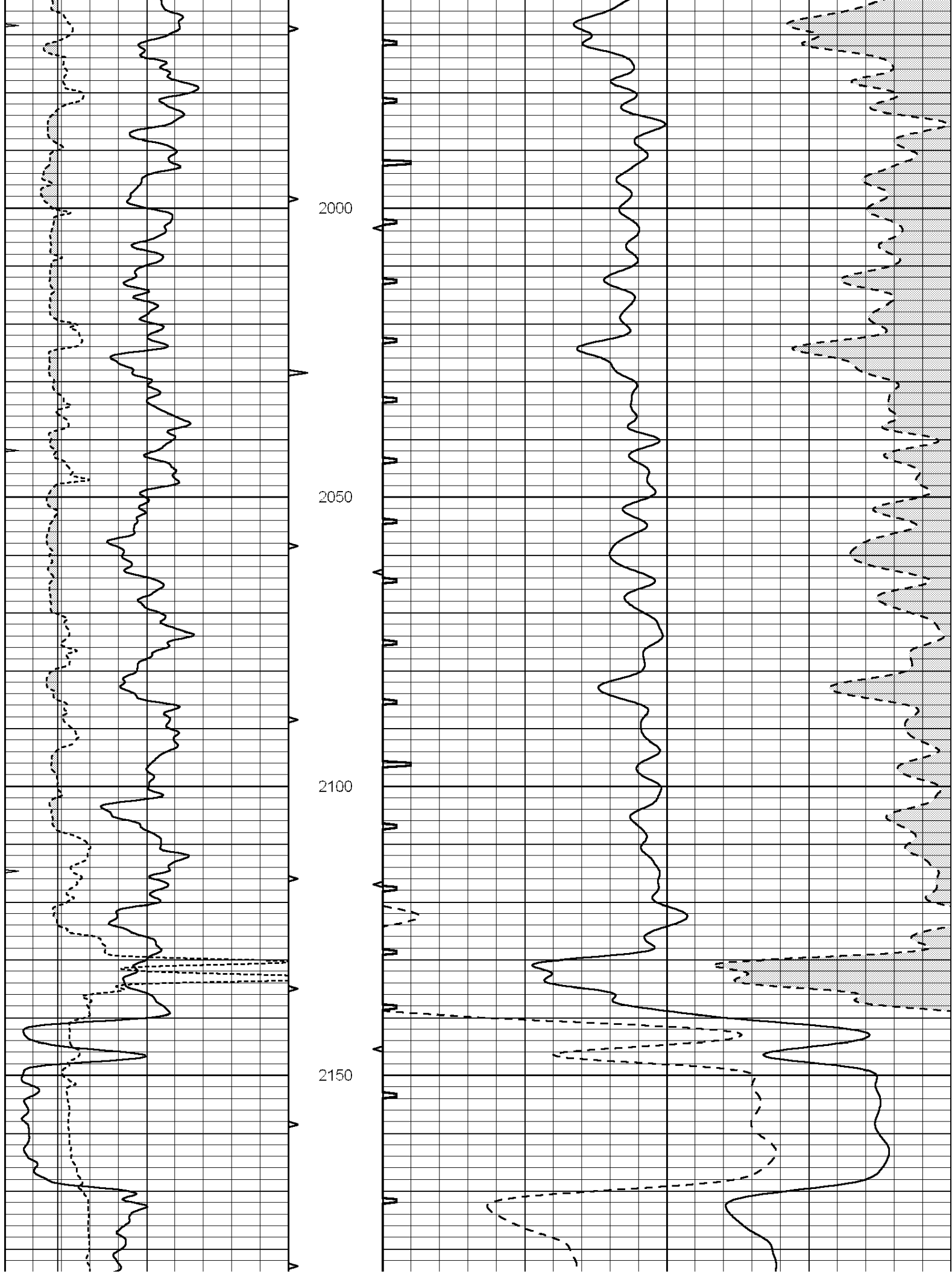
1450

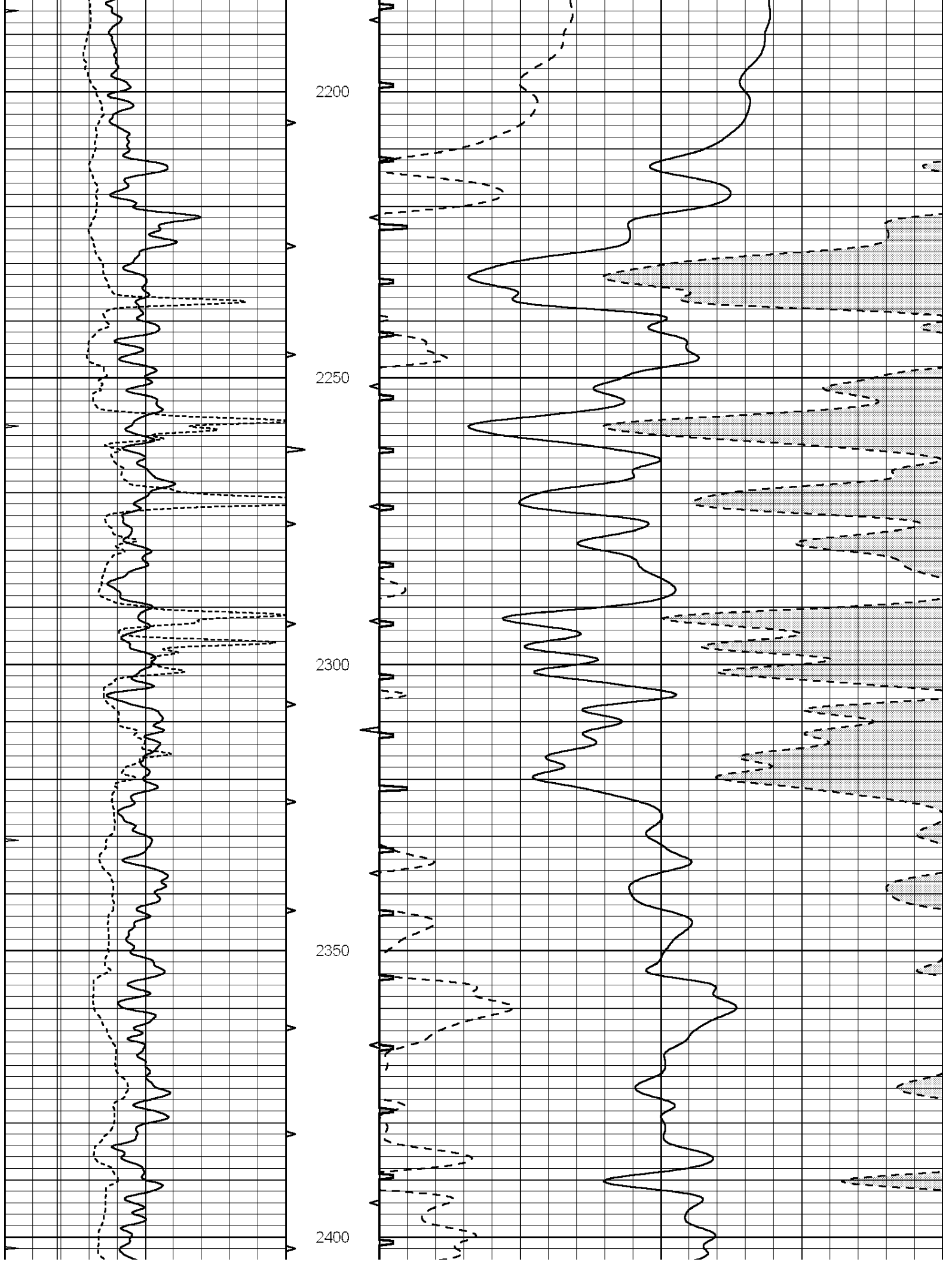
1500

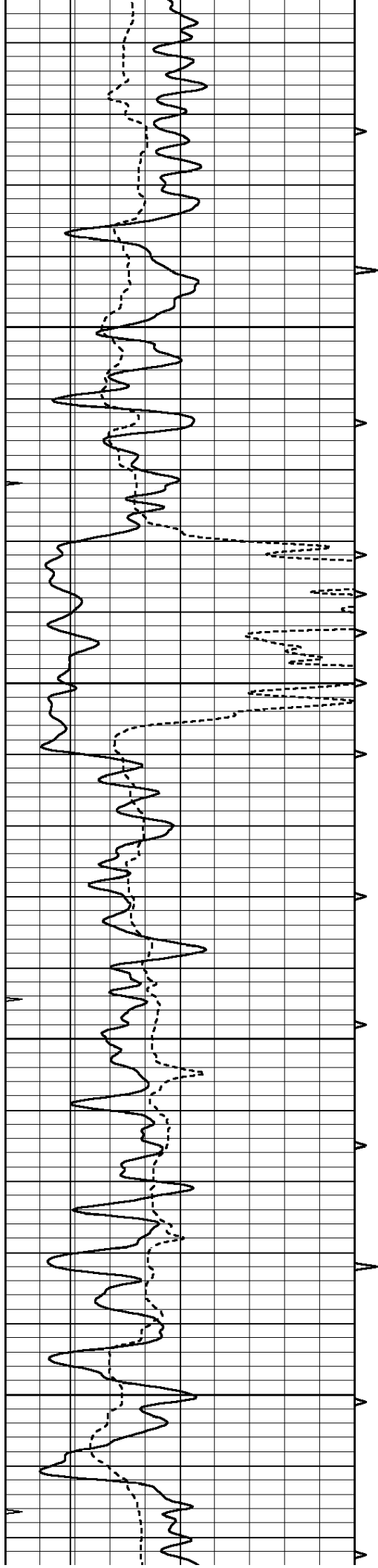










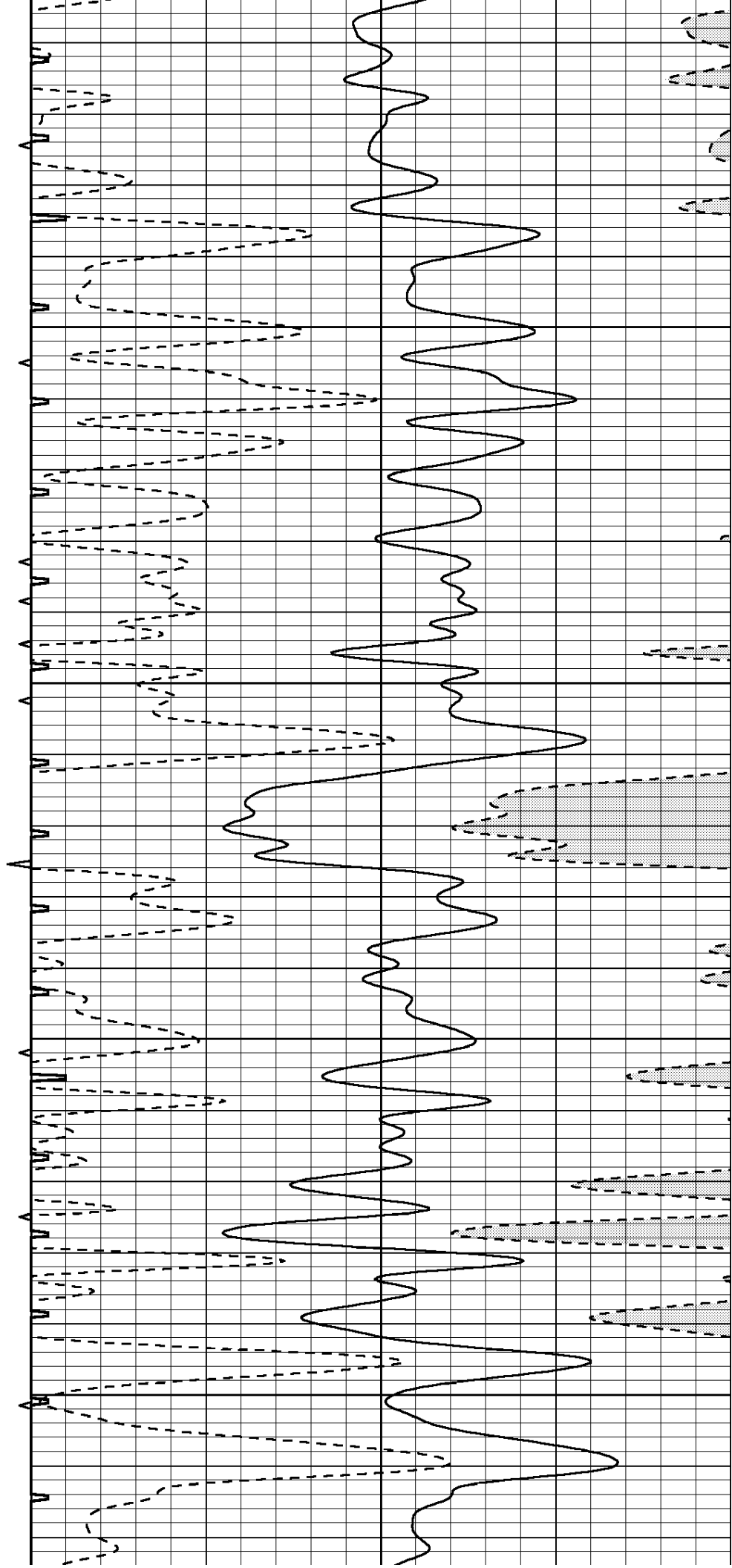


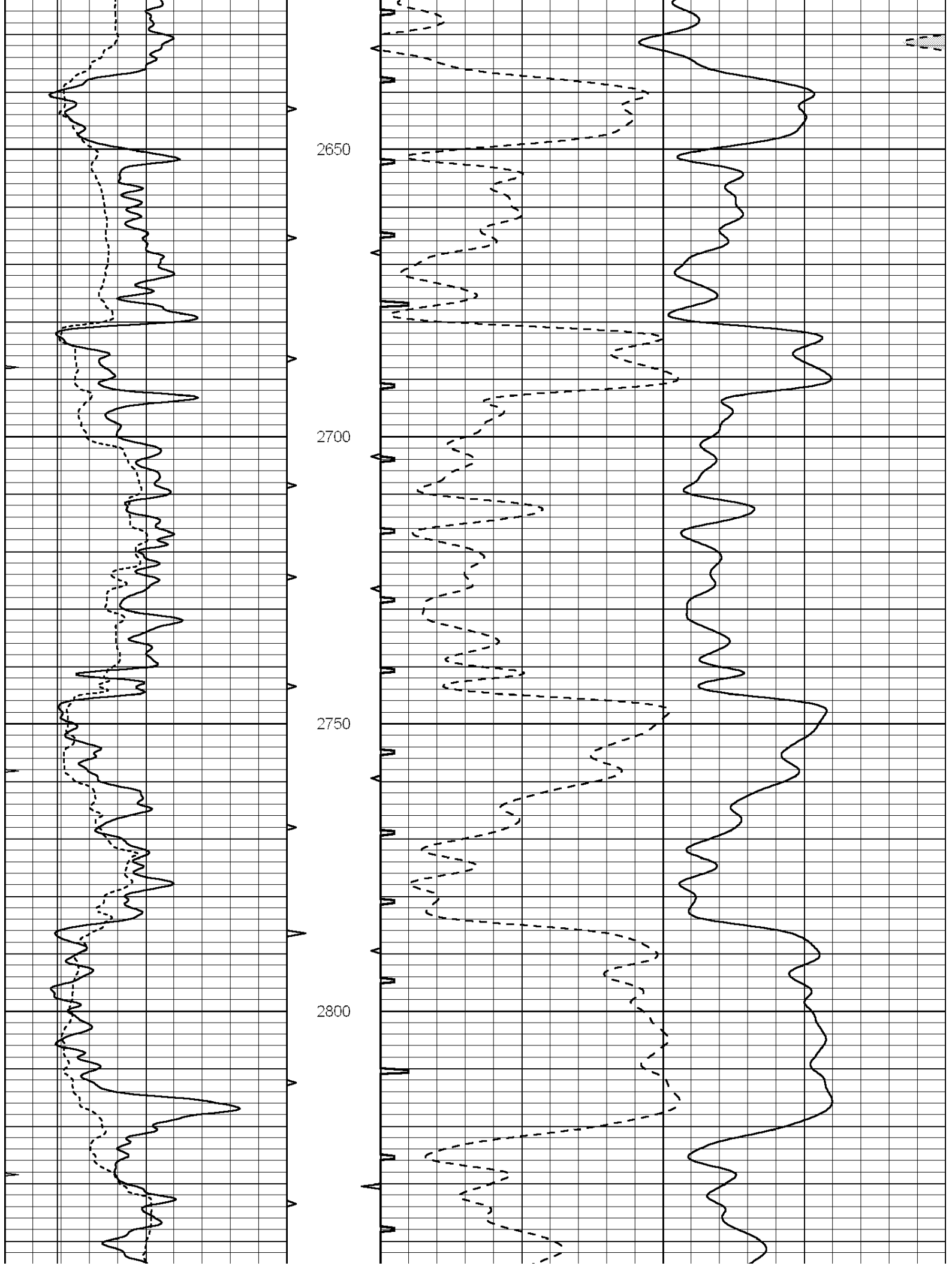
2450

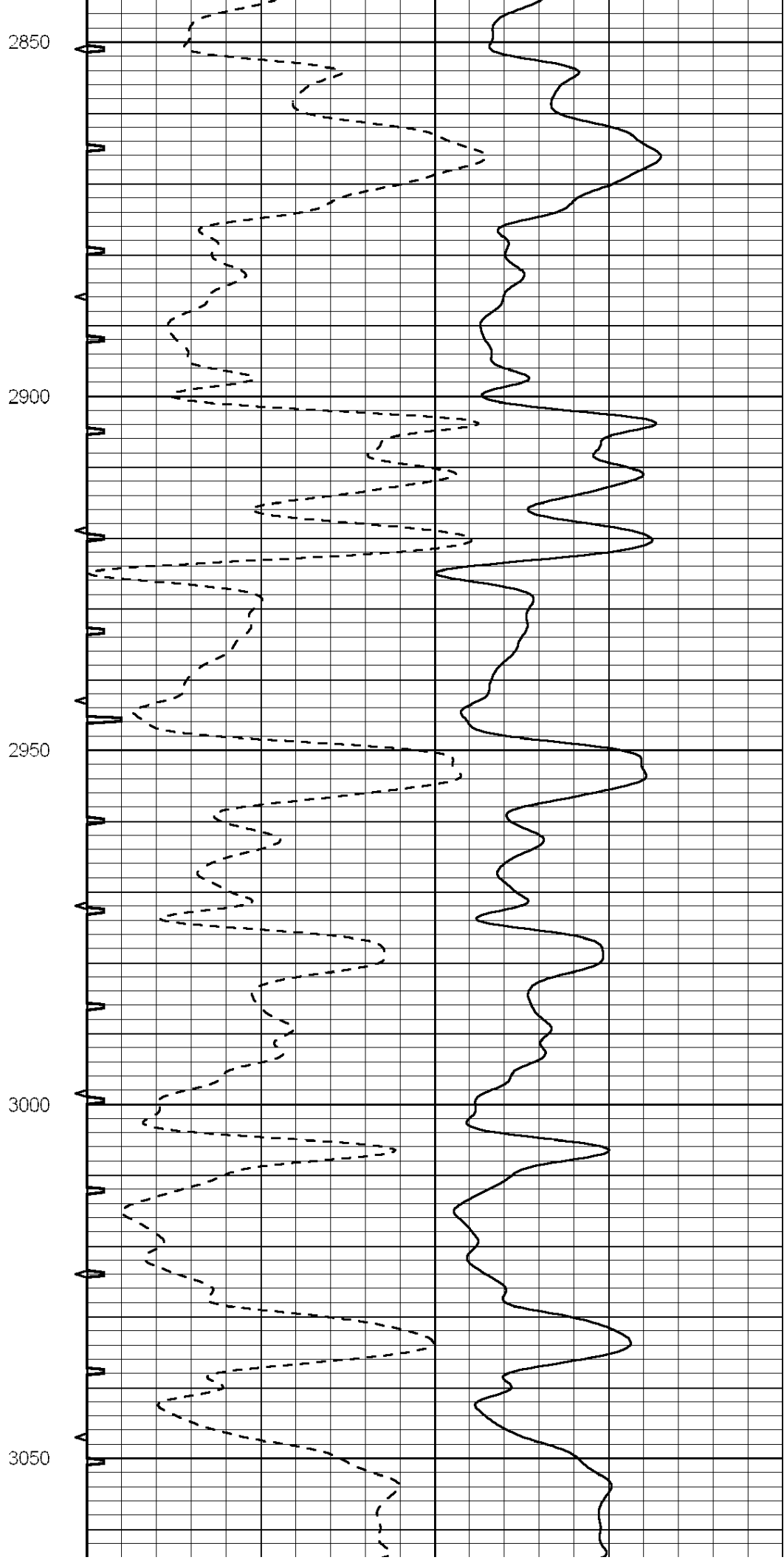
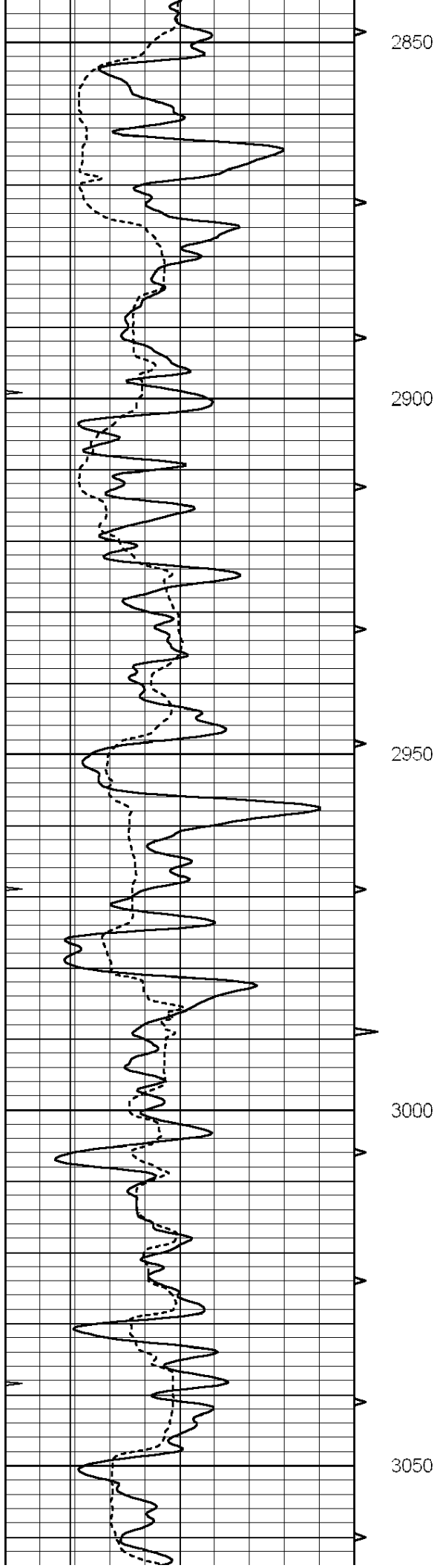
2500

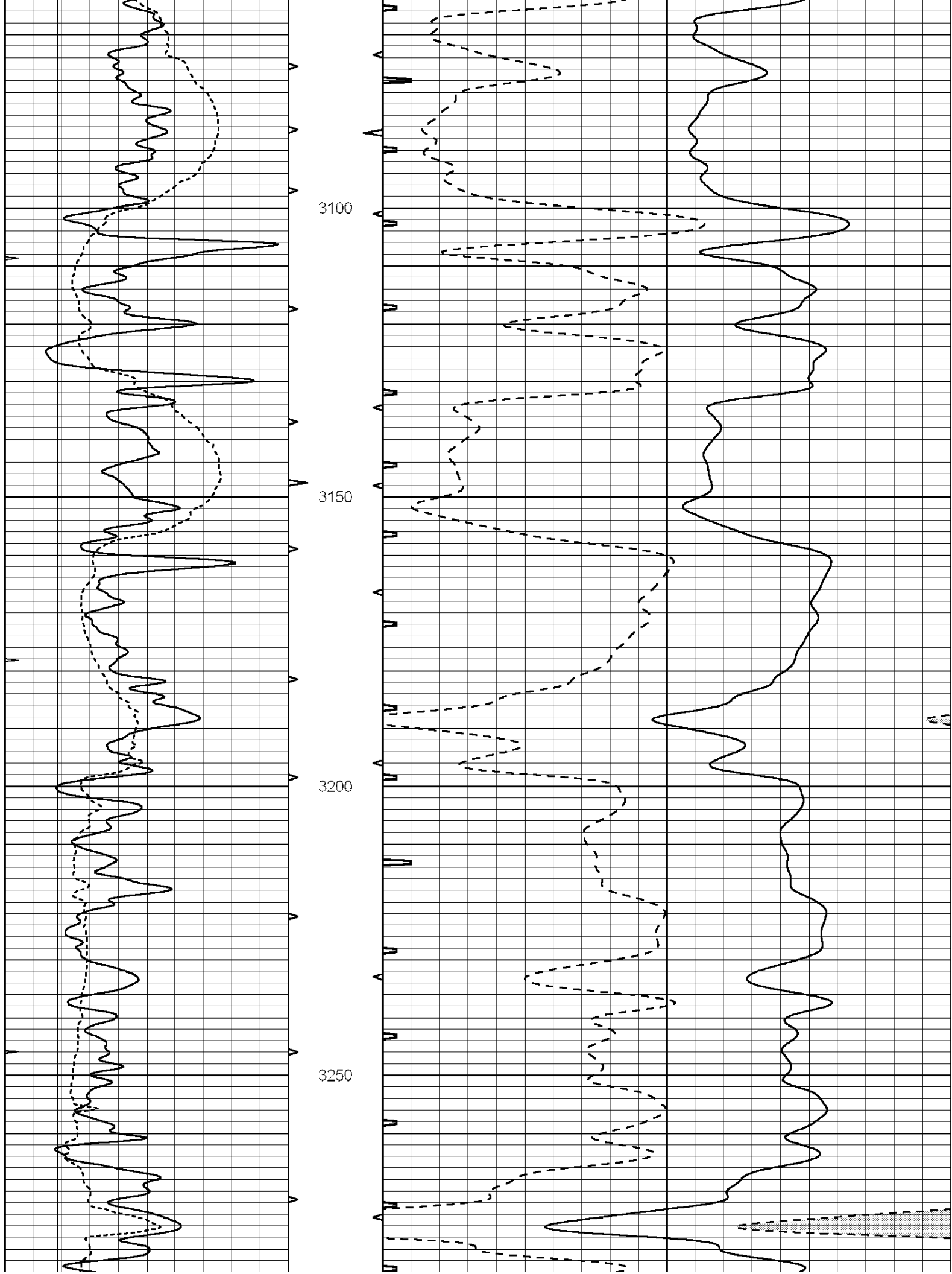
2550

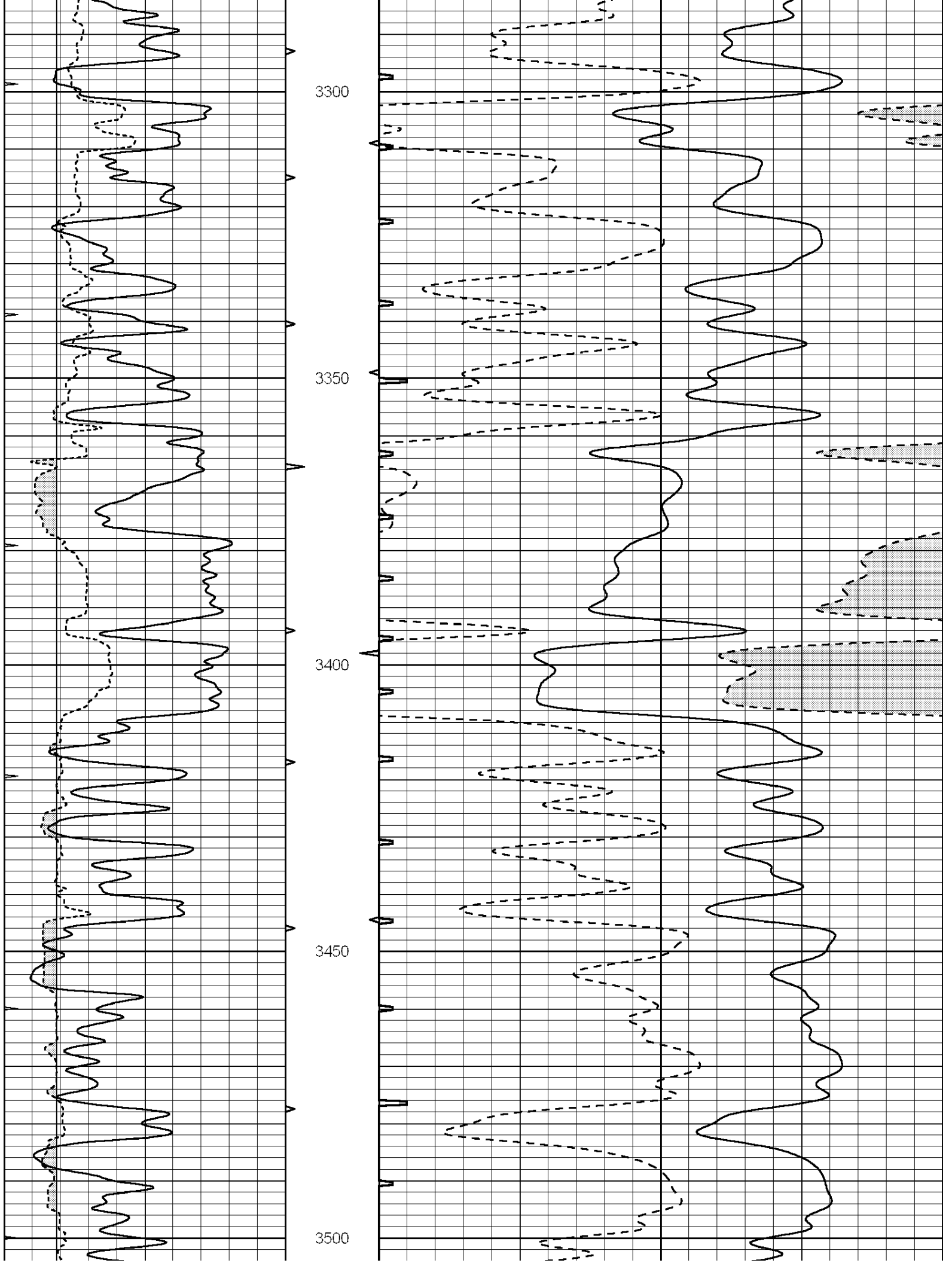
2600

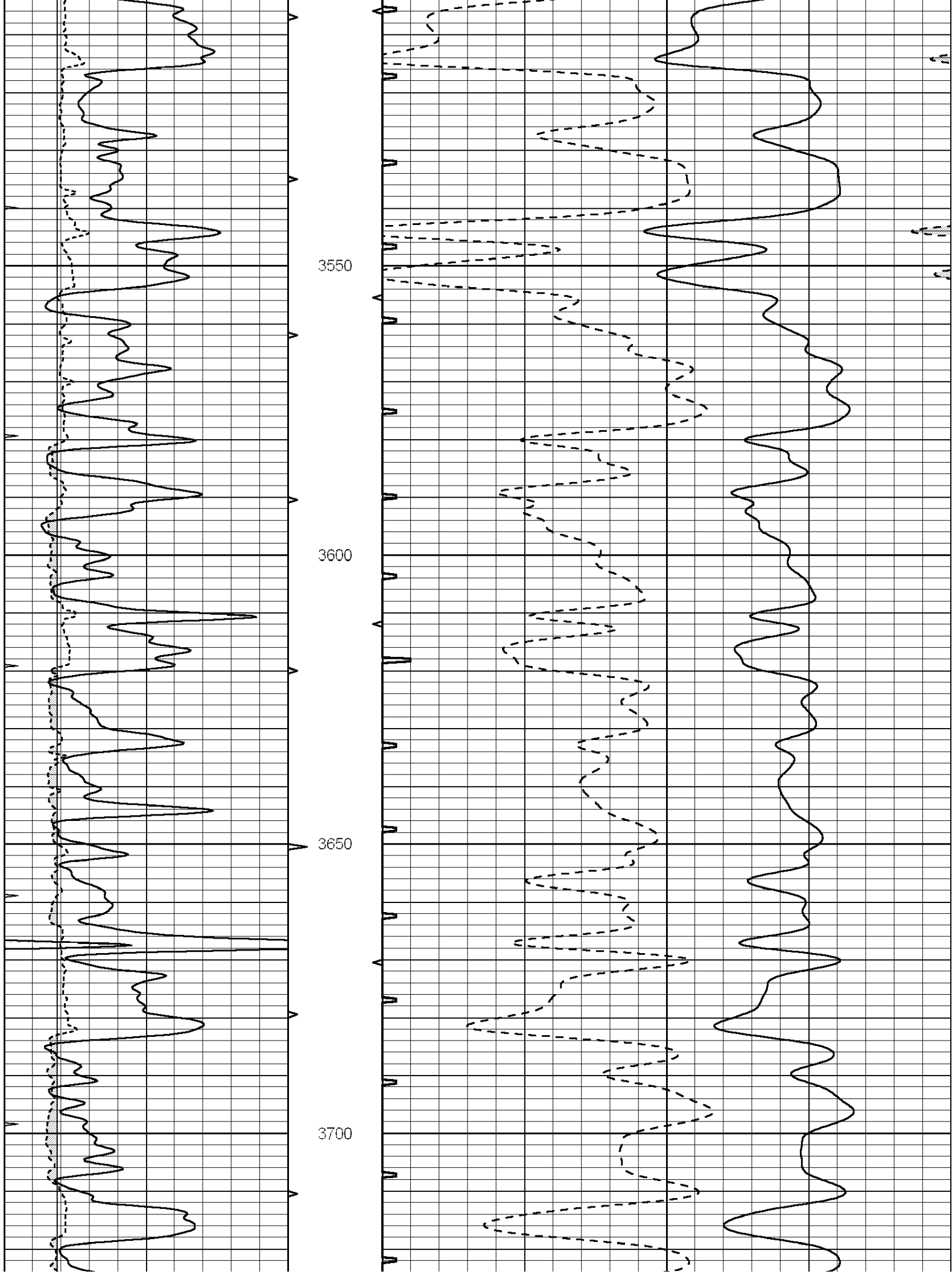


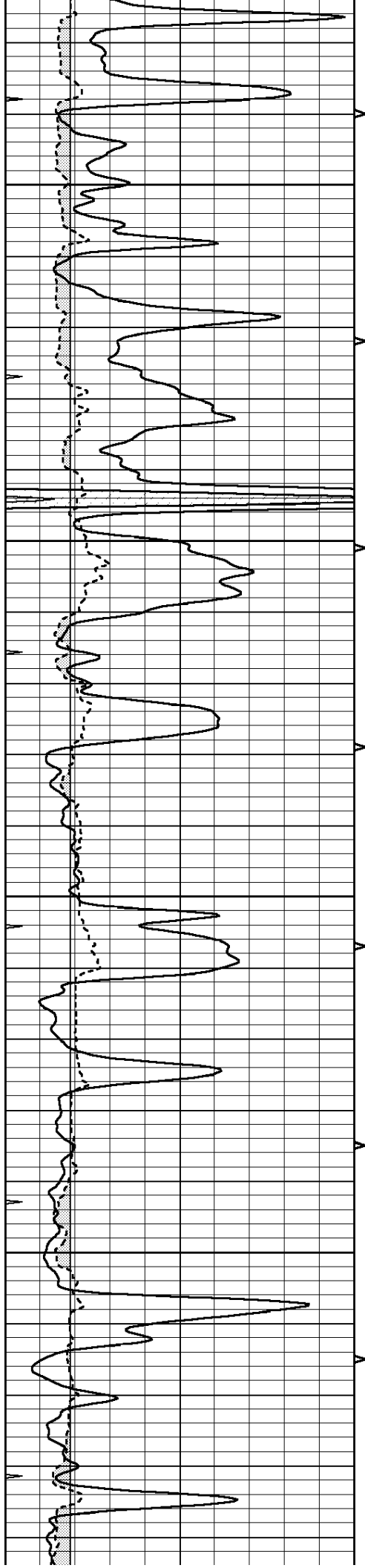










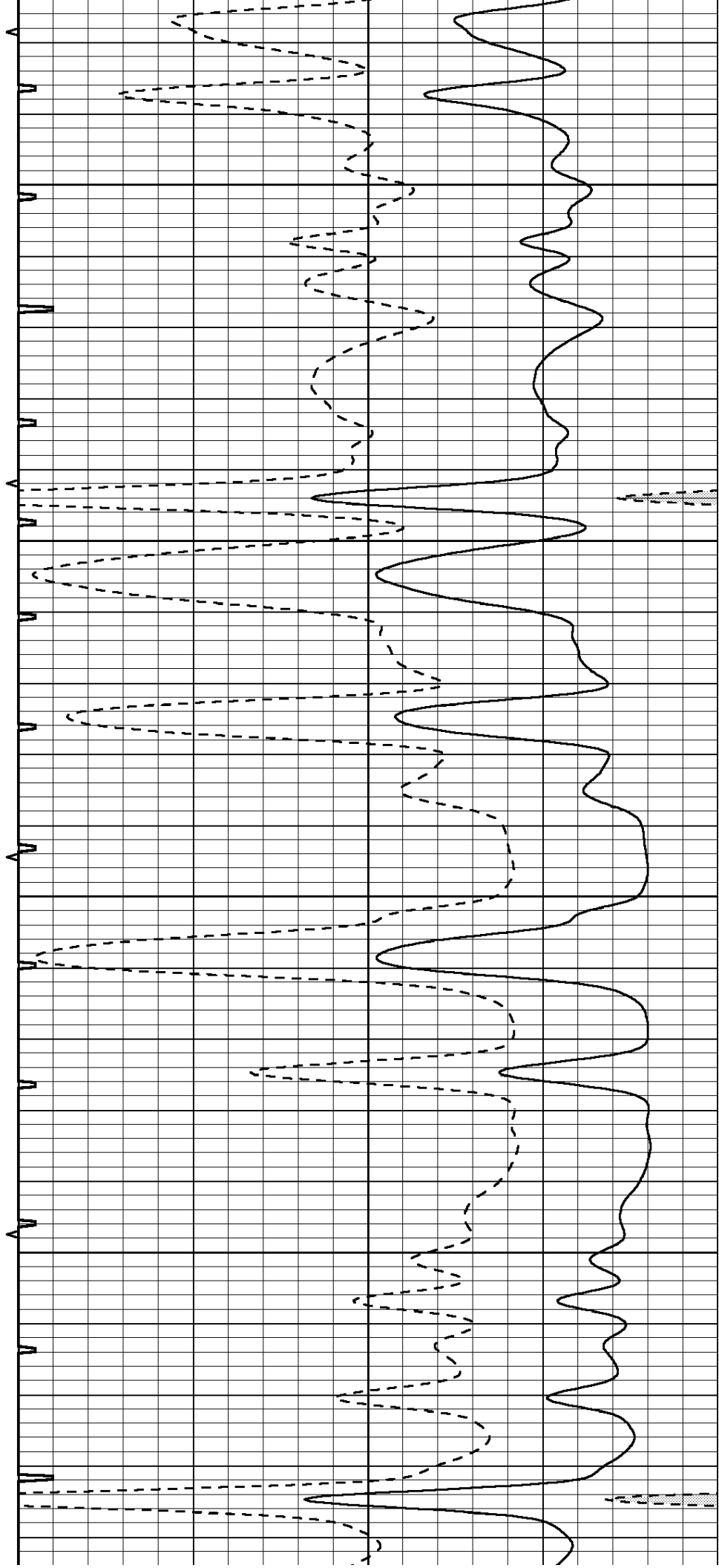


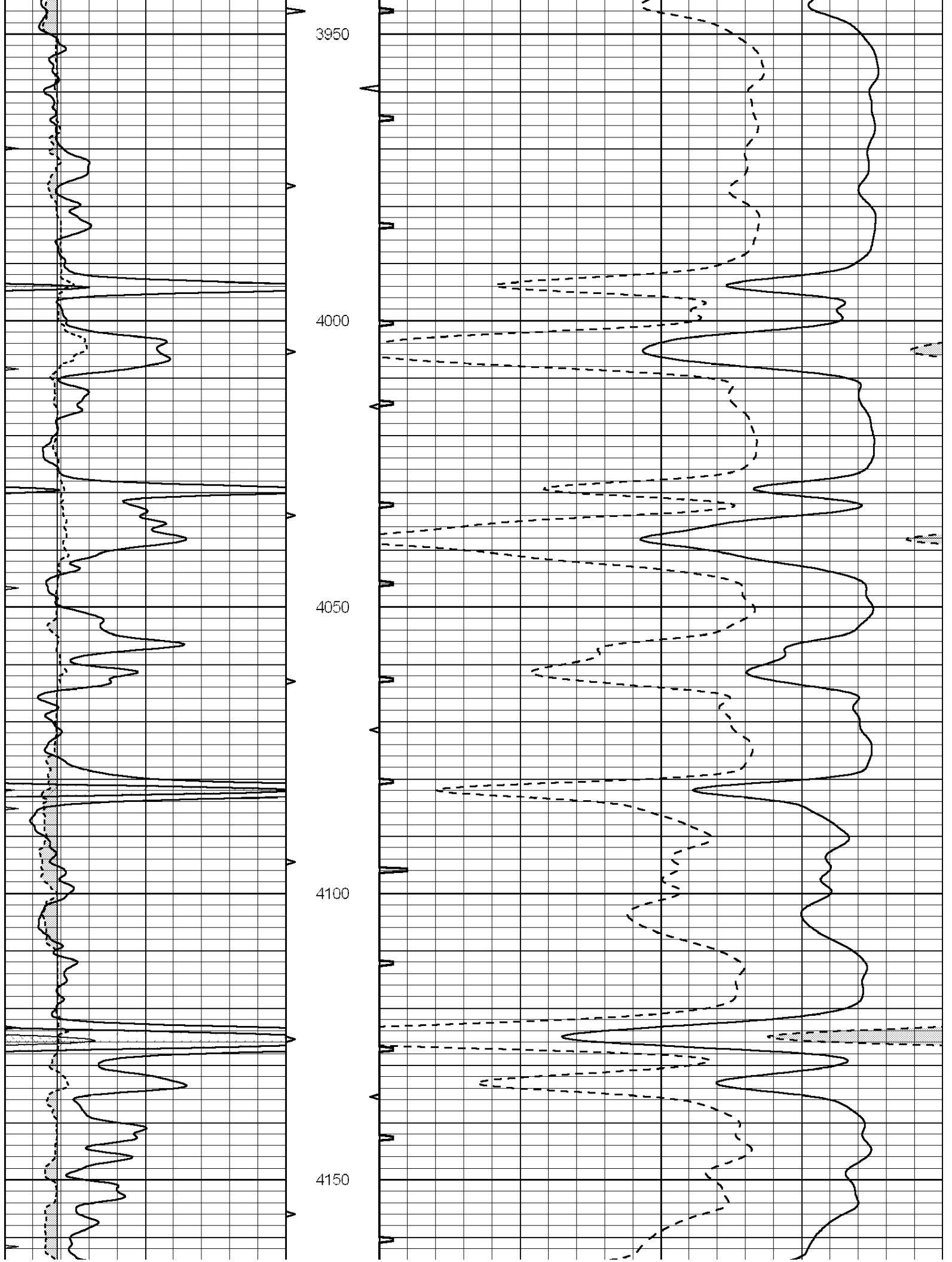
3750

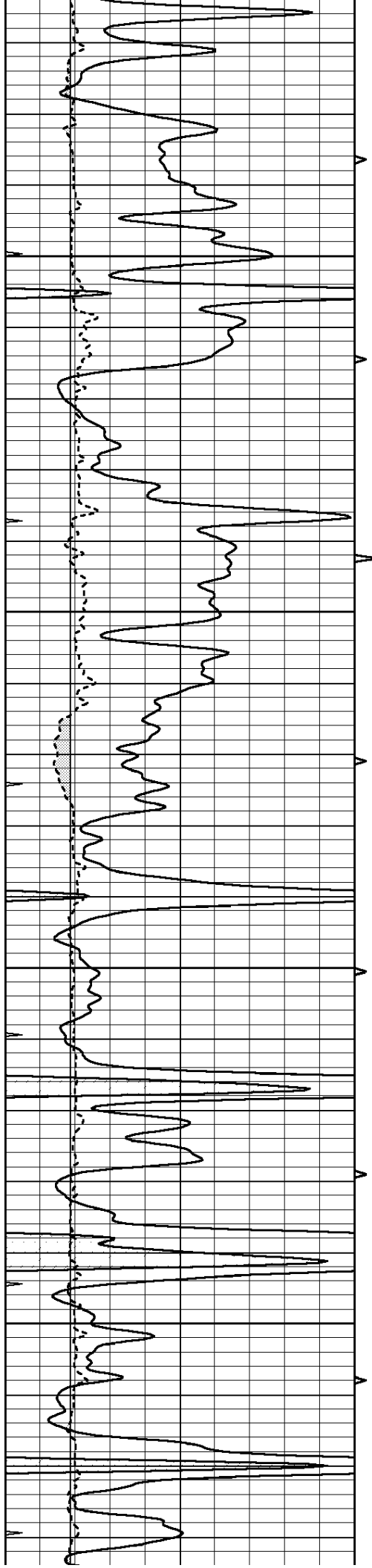
3800

3850

3900





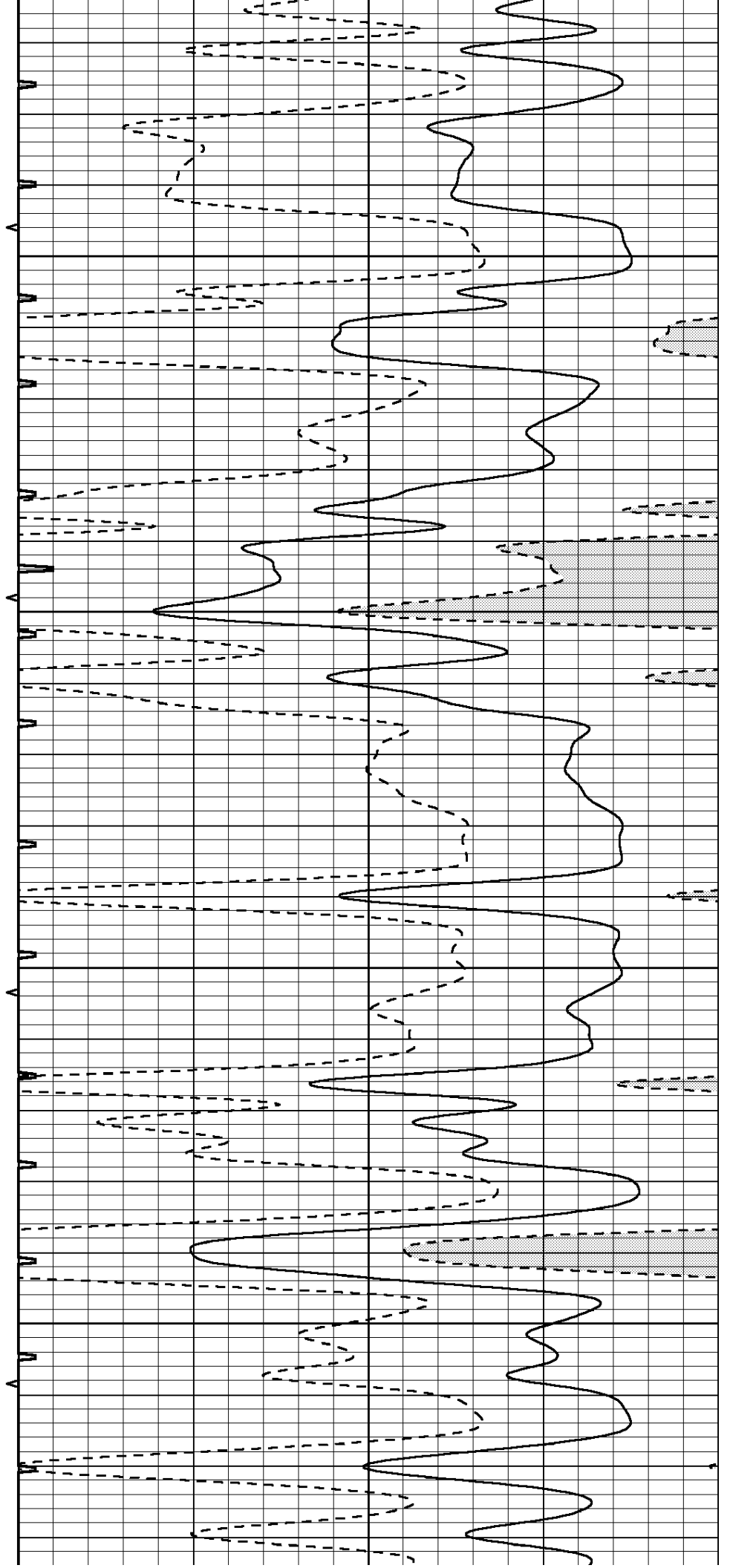


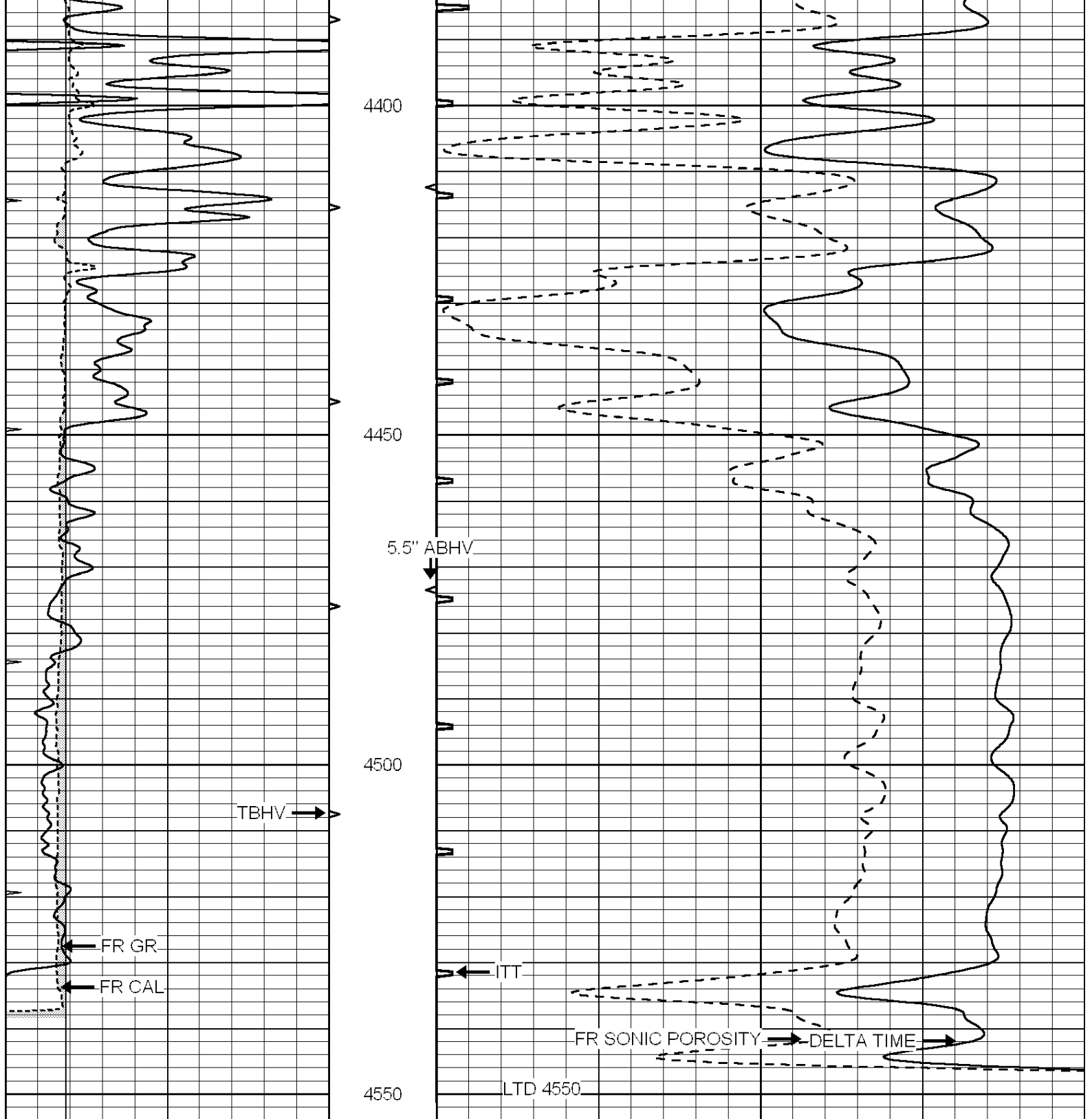
4200

4250

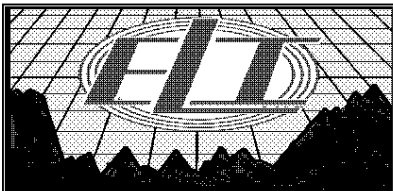
4300

4350





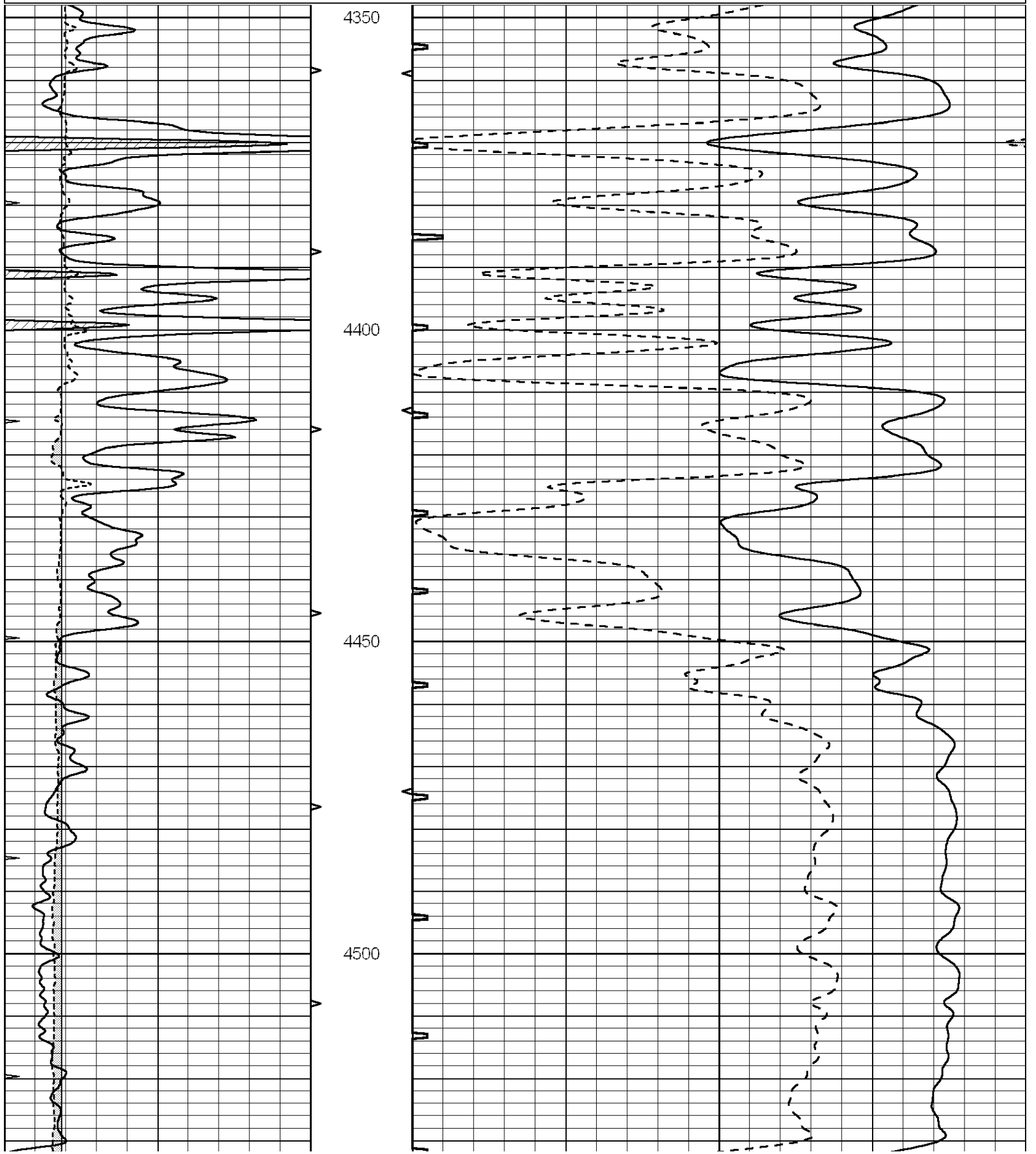
0	GAMMA RAY (GAPI)	150	ABHV	140	DELTA TIME (usec/ft)	40	
6	CALIPER (in)	16	10 (ft3)	0	30	SONIC POROSITY (pu)	-10
0	MINMK	20	TBHV	0	ITT (msec)	20	
			0 (ft3)	10			

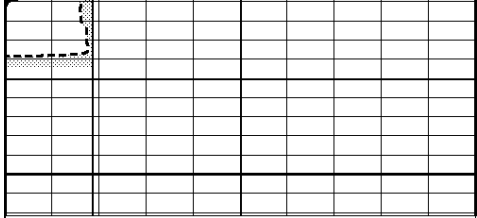


REPEAT SECTION

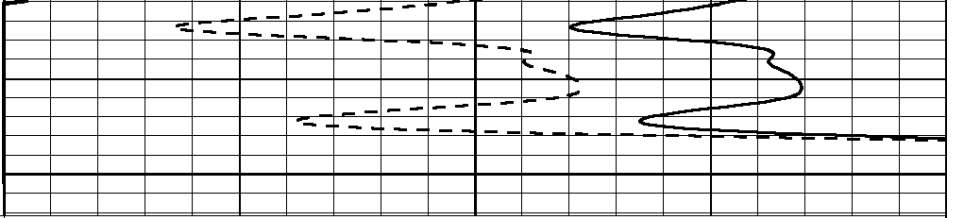
Dataset Pathname: pass6.2
 Presentation Format: slt
 Dataset Creation: Fri Nov 08 06:49:44 2019 by Calc SOC 120430
 Charted by: Depth in Feet scaled 1:240

0	GAMMA RAY (GAPI)	150	ABHV	140	DELTA TIME (usec/ft)	40	
6	CALIPER (in)	16	10 (ft3)	0	30	SONIC POROSITY (pu)	-10
0	MINMK	20	TBHV	0	ITT (msec)	20	
			0 (ft3)	10			





4550



0	GAMMA RAY (GAPI)	150	ABHV	140	DELTA TIME (usec/ft)	40
6	CALIPER (in)	16	10 (ft3) 0	30	SONIC POROSITY (pu)	-10
0	MINMK	20	TBHV	0	ITT (msec)	20
			0 (ft3) 10			