



MICRO LOG

Company VINCENT OIL CORPORATION
Well KEOUGH #7-34
Field MULLBERRY CREEK
County FORD
State KANSAS

Company VINCENT OIL CORPORATION
Well KEOUGH #7-34
Field MULLBERRY CREEK
County FORD State KANSAS

Location: AP1 #: 15-057-20985-0000
2582' FSL & 2409' FVL
NE - NE - NE - SW
Permanent Datum GROUND LEVEL Elevation 2535
Log Measured From KELLY BUSHING 12' A.G.L.
Drilling Measured From KELLY BUSHING
SEC 34 TWP 28S RGE 23W
Other Services
CDL/CNL/PE
DIL/SONIC
Elevation
K.B. 2547
D.F. 2545
G.L. 2535

Date	9/23/17		
Run Number	TWO		
Depth Driller	5370		
Depth Logger	5372		
Bottom Logged Interval	5356		
Top Log Interval	4200		
Casing Driller	8 5/8" @ 690'		
Casing Logger	690		
Bit Size	7 7/8"		
Type Fluid in Hole	CHEMICAL MUD	CHLORIDES 11,200 PPM	
Density / Viscosity	9.4/85		
pH / Fluid Loss	9.0/11.2		
Source of Sample	FLOWLINE		
Rim @ Meas. Temp	.400 @ 80F		
Rmf @ Meas. Temp	.300 @ 80F		
Rmc @ Meas. Temp	.480 @ 80F		
Source of Rmf / Rmc	MEASUREMENT		
Rim @ BHT	.250 @ 128F		
Time Circulation Stopped	5.5 HOURS		
Time Logger on Bottom	10:30 P.M.		
Maximum Recorded Temperature	128F		
Equipment Number	922339		
Location	HAYS, KANSAS		
Recorded By	JEFF LUEBBERS		
Witnessed By	TOM DUDGEON		

<<< Fold Here >>>

All interpretations are opinions based on inferences from electrical or other measurements and we cannot and do not guarantee the accuracy or correctness of any interpretation, and we shall not, except in the case of gross or willful negligence on our part, be liable or responsible for any loss, costs, damages, or expenses incurred or sustained by anyone resulting from any interpretation made by any of our officers, agents or employees. These interpretations are also subject to our general terms and conditions set out in our current Price Schedule.

Comments

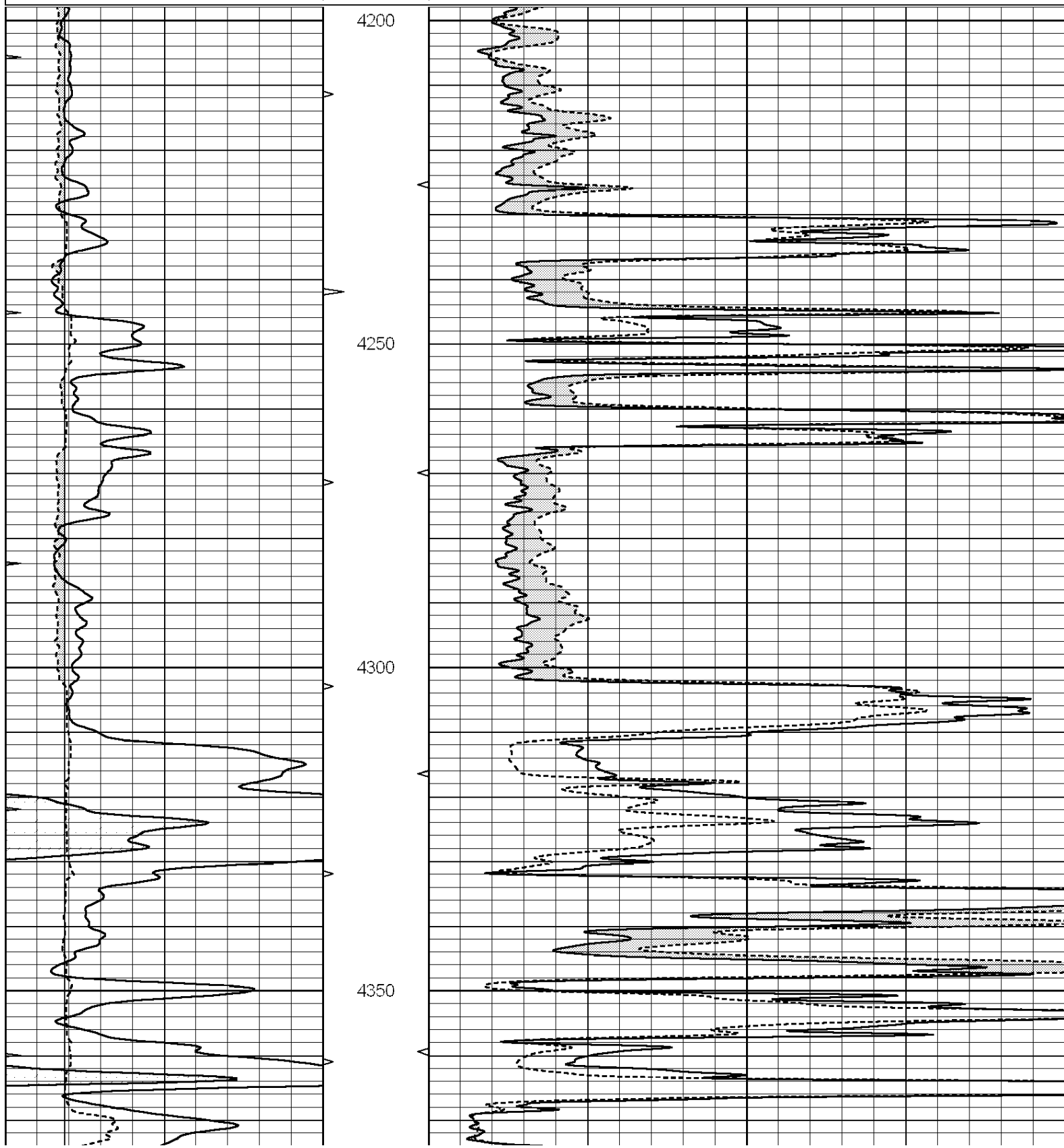
THANK YOU FOR USING ELI WIRELINE HAYS, KANSAS (785) 628-6395
DIRECTIONS
KINGSDOWN, KS. & HWY 54, 2N. ON "RD. 125" TO "WILBURN RD.", 4W., N. INTO ACROSS FROM HOUSE

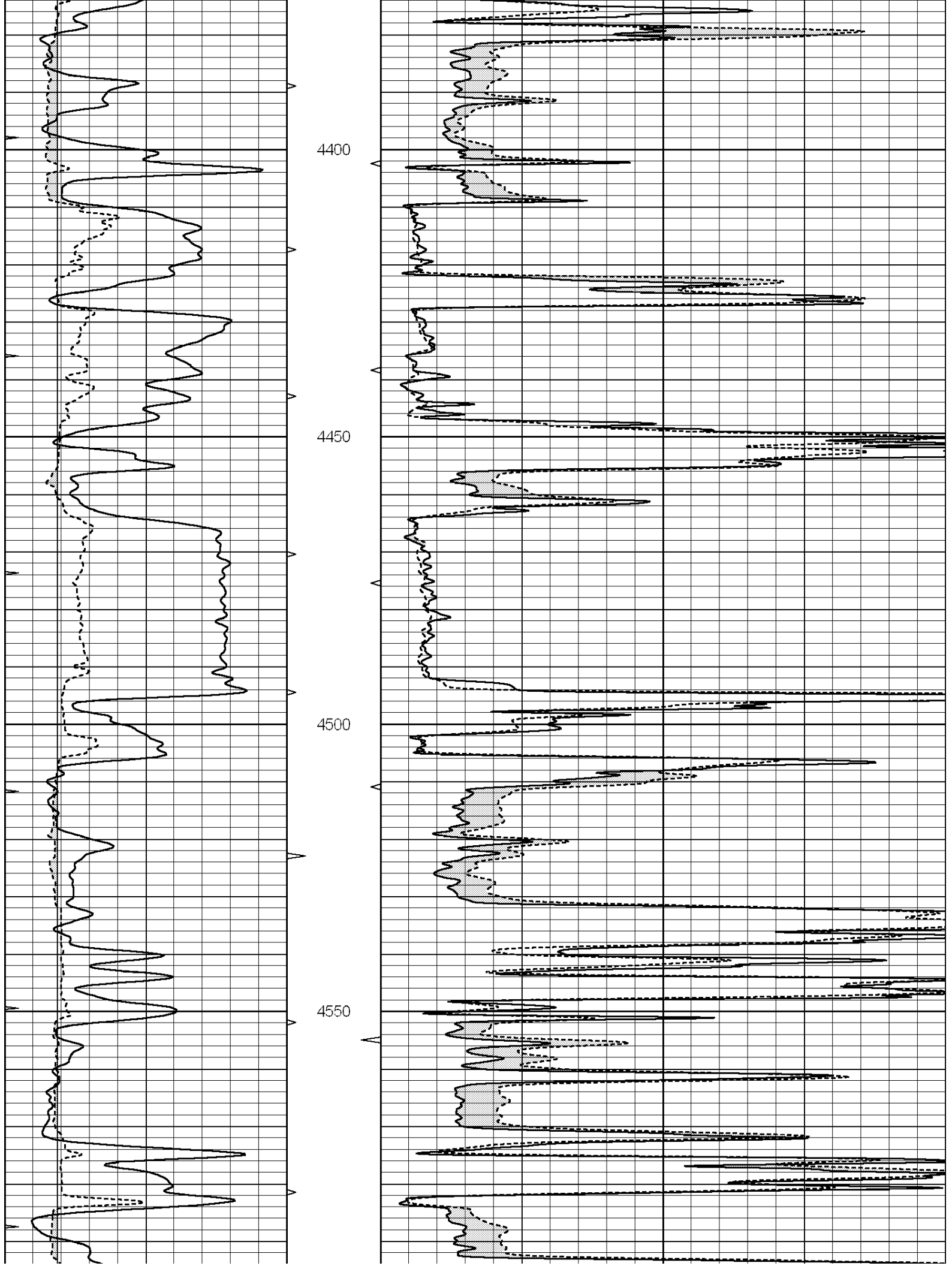


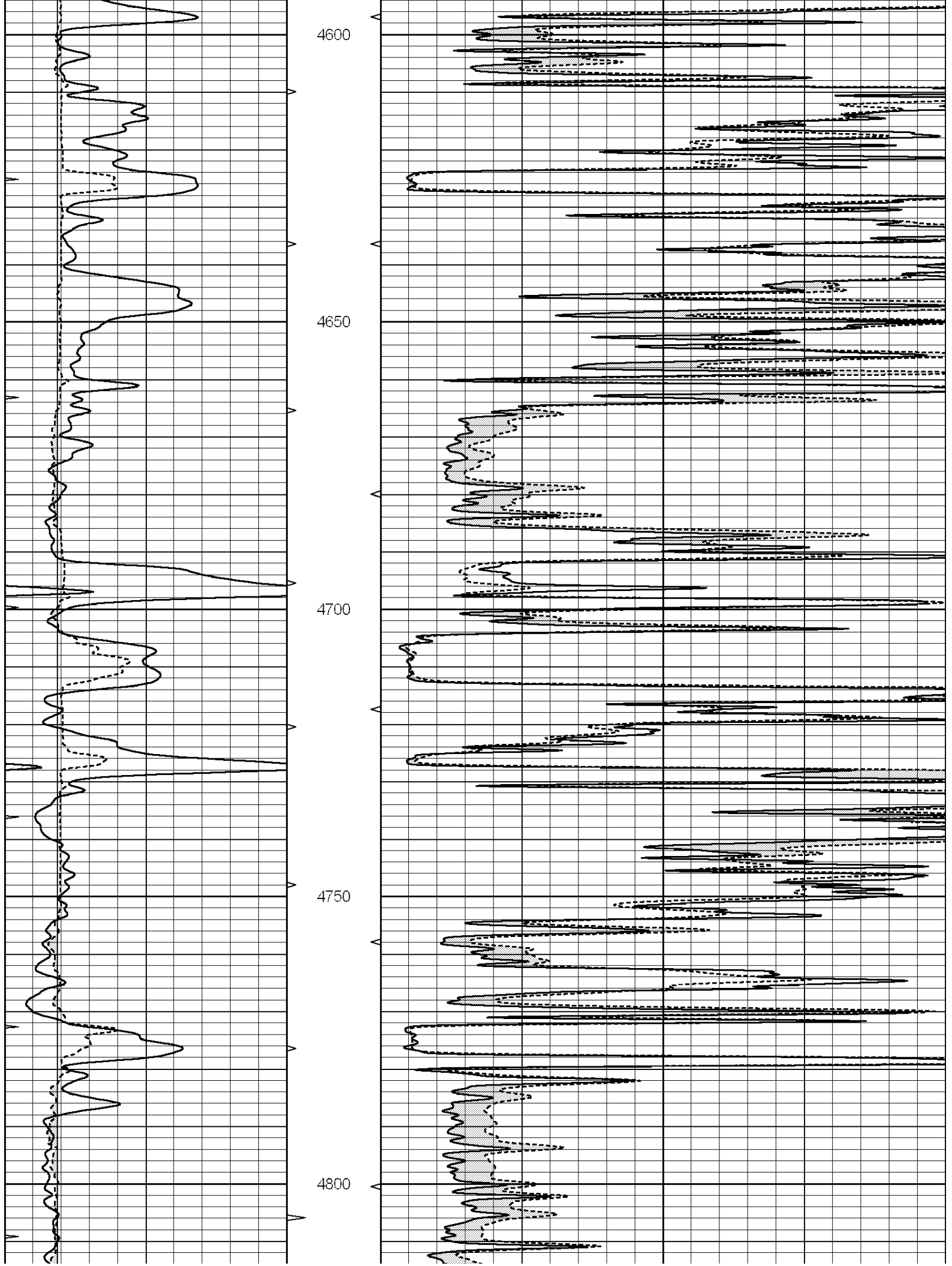
MAIN SECTION

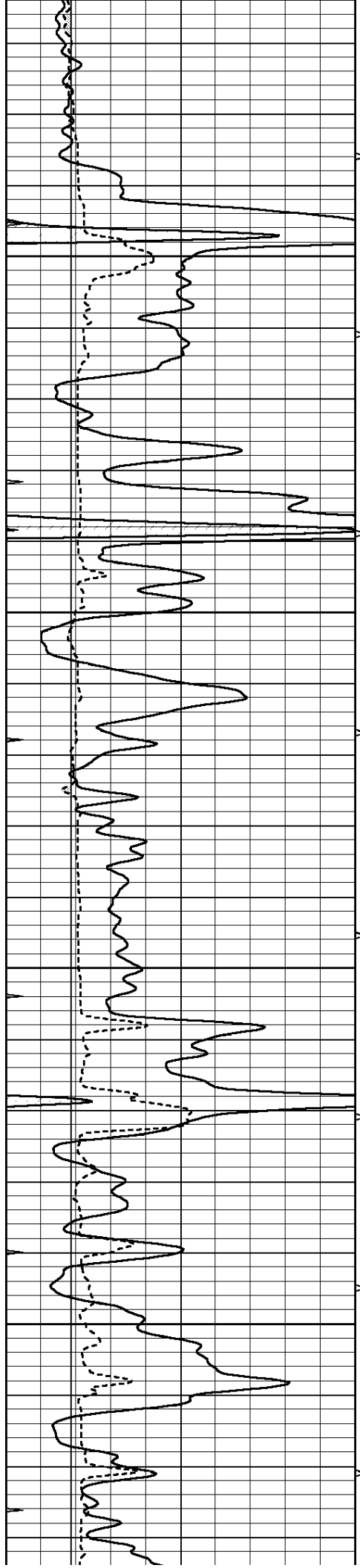
Database File: 1830pe.db
 Dataset Pathname: pass6.3
 Presentation Format: micro
 Dataset Creation: Sat Sep 23 22:31:47 2017 by Calc SOC 120430
 Charted by: Depth in Feet scaled 1:240

0	GAMMA RAY (GAPI)	150	ABHV	0	MEL1.5 (Ohm-m)	40
6	CALIPER (in)	16	10 (ft3)	0	MEL 20 (Ohm-m)	40
0	MINMK	20	TBHV			
			0 (ft3)	10		







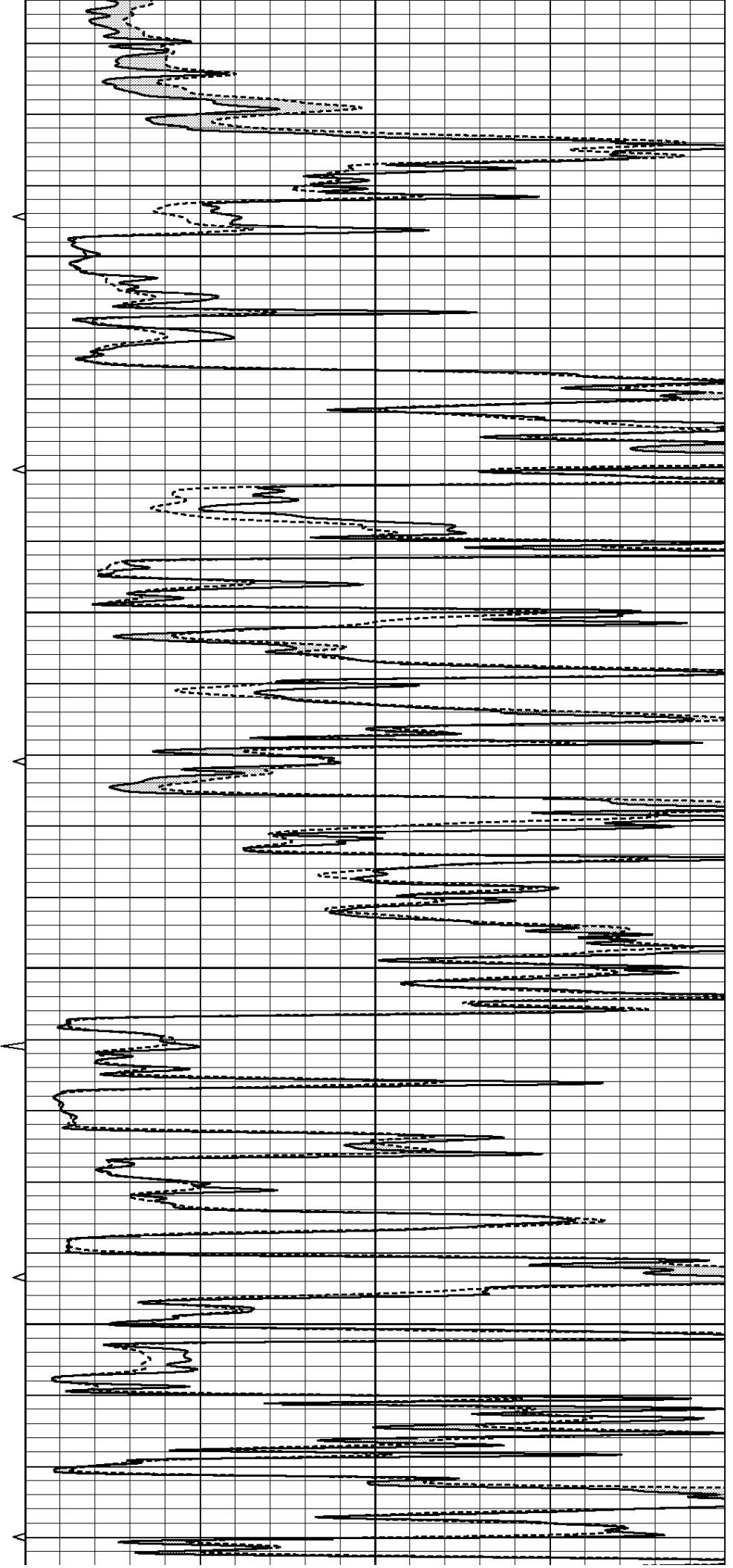


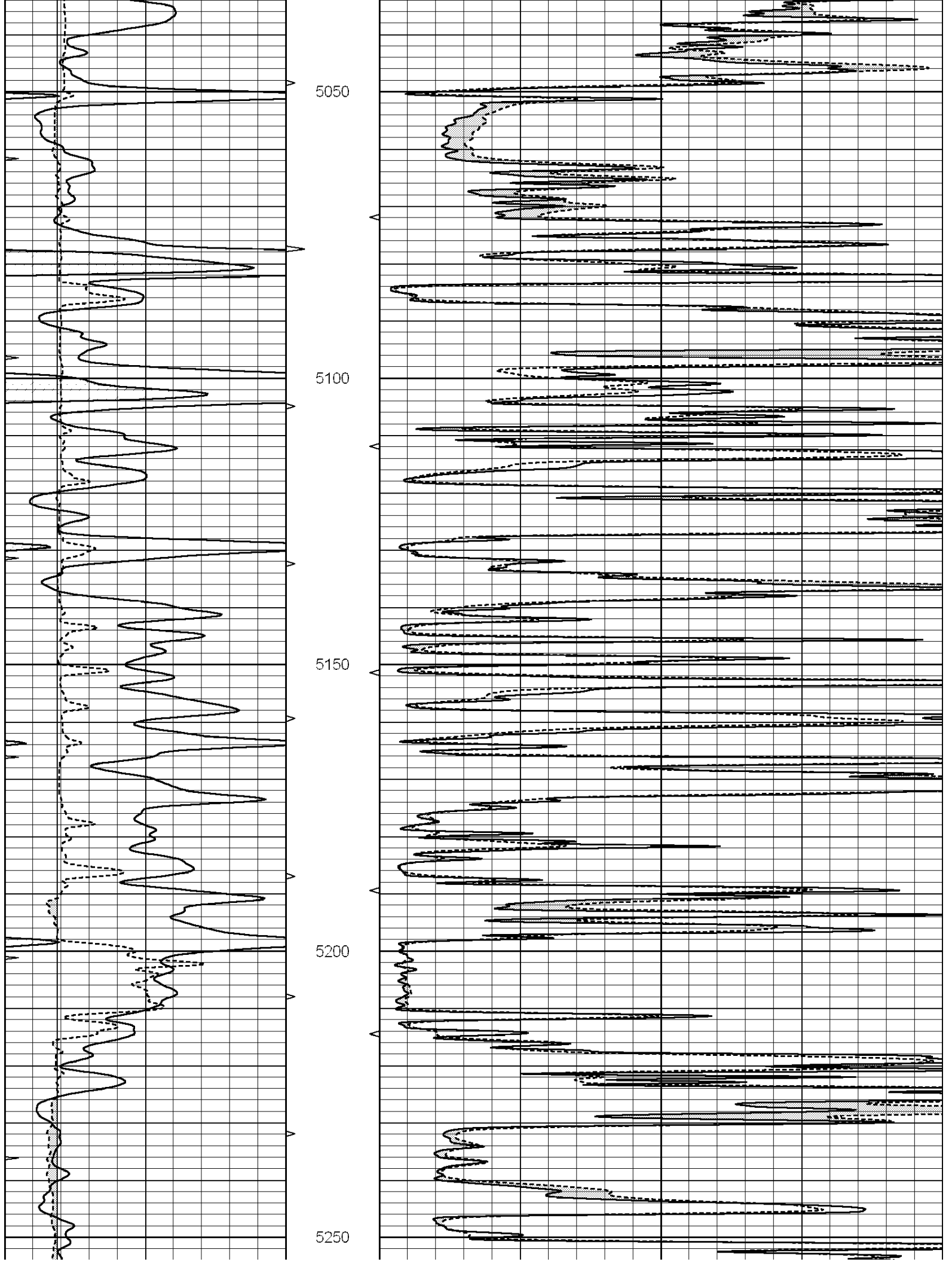
4850

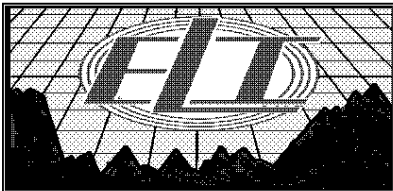
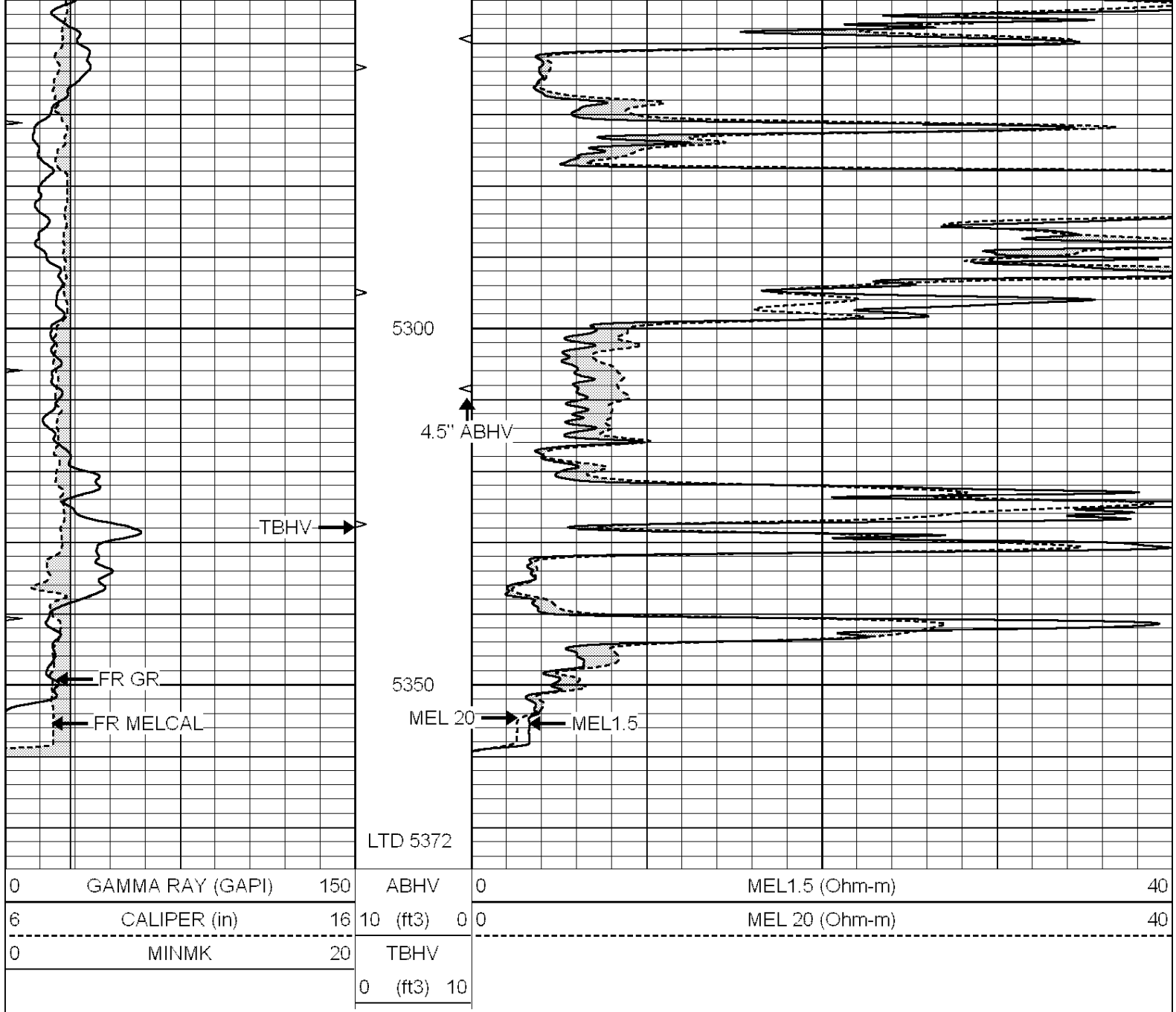
4900

4950

5000





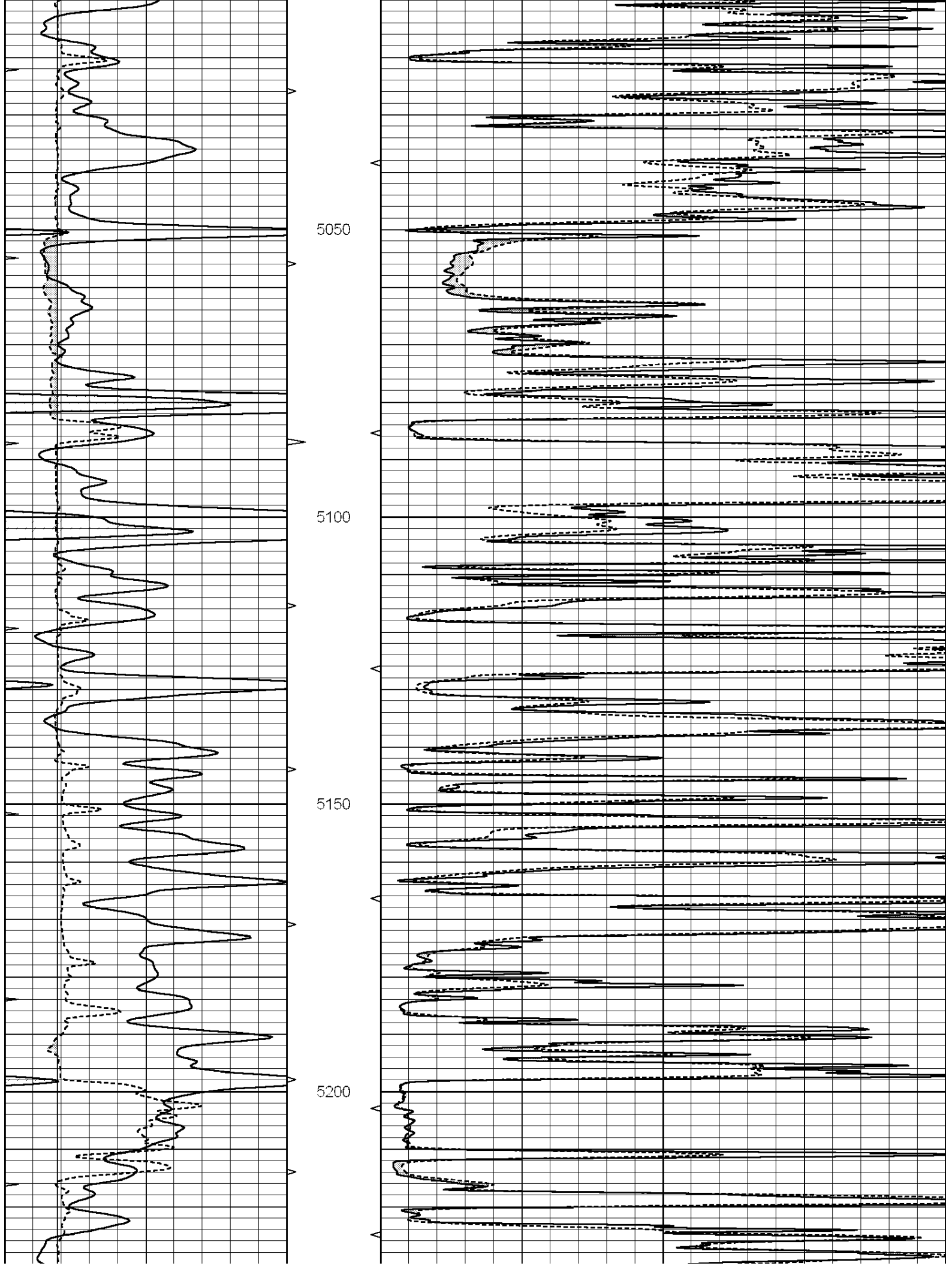


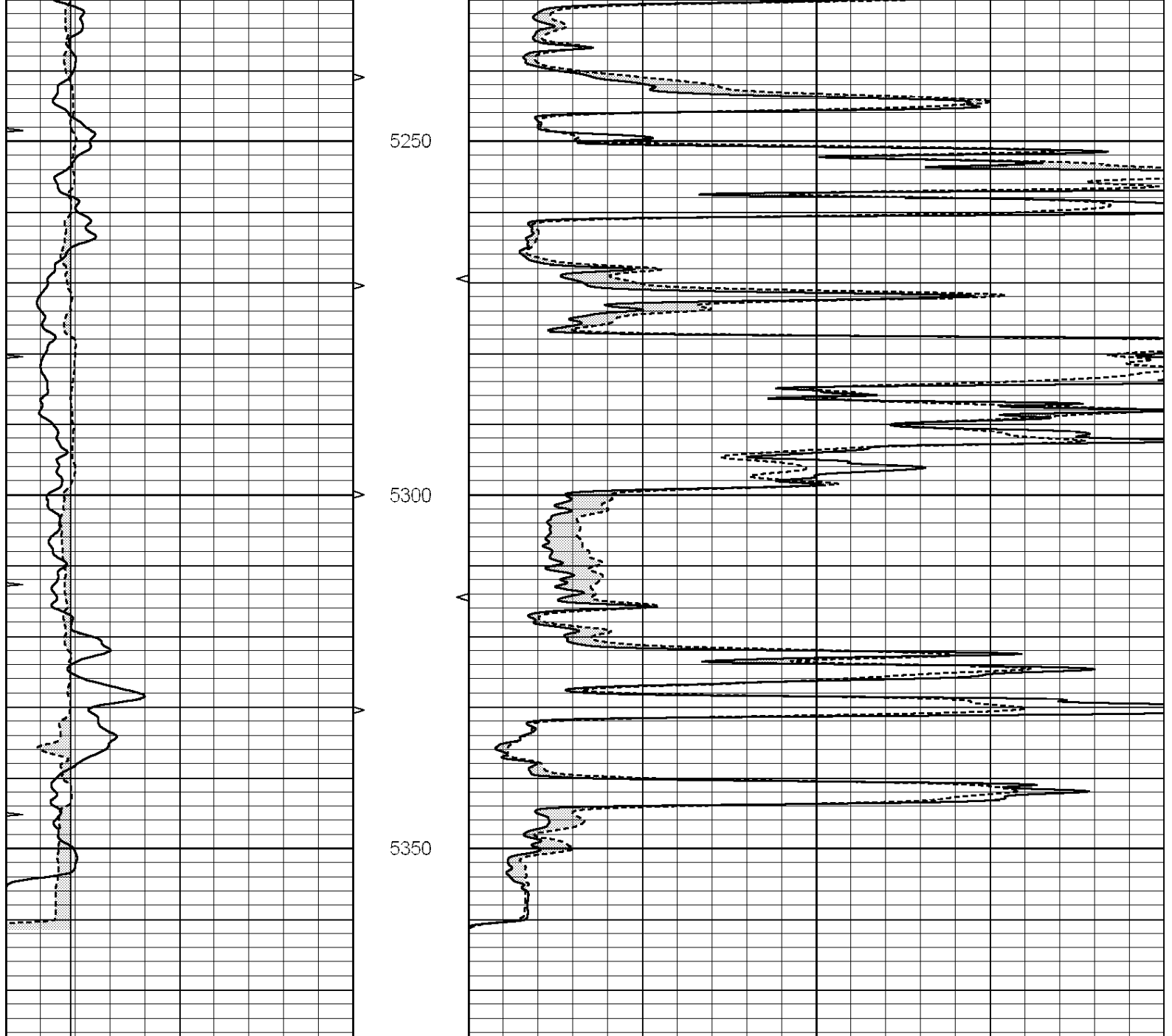
REPEAT SECTION

Database File: 1830pe.db
 Dataset Pathname: pass5.4
 Presentation Format: micro
 Dataset Creation: Sat Sep 23 22:06:27 2017
 Charted by: Depth in Feet scaled 1:240

0	GAMMA RAY (GAPI)	150	ABHV	0	MEL1.5 (Ohm-m)	40
6	CALIPER (in)	16	10 (ft3)	0 0	MEL 20 (Ohm-m)	40
0	MINMK	20	TBHV			
			0 (ft3)	10		







0	GAMMA RAY (GAPI)	150	ABHV	0	MEL1.5 (Ohm-m)	40
6	CALIPER (in)	16	10 (ft3)	0 0	MEL 20 (Ohm-m)	40
0	MINMK	20	TBHV			
			0 (ft3)	10		

Calibration Report

Database File: 1830pe.db
 Dataset Pathname: pass6.3
 Dataset Creation: Sat Sep 23 22:31:47 2017 by Calc SOC 120430

MICRO Calibration Report

Serial Number: 070911
 Tool Model: ProbeN
 Performed: Tue Aug 08 06:25:06 2017

Caliper Calibration: Gain=3.922 Offset=2.314

Low Cal High Cal

References	8.000	18.000
Readings	1.450	4.000
1.5" Calibration:	Gain=40.000	Offset=0.000
References	Low Cal 0.000	High Cal 20.000
Readings	0.001	1.240
2" Calibration:	Gain=50.000	Offset=0.000
References	Low Cal 0.000	High Cal 20.000
Readings	0.001	1.076
Gamma Ray Calibration Report		
Serial Number:	110959	
Tool Model:	OPEN_GR	
Performed:	Sat Sep 23 21:47:40 2017	
Calibrator Value:	1.0	GAPI
Background Reading:	0.0	cps
Calibrator Reading:	1.0	cps
Sensitivity:	0.2400	GAPI/cps