



# DUAL INDUCTION LOG

Company VINCENT OIL CORPORATION  
 Well KEOUGH #7-34  
 Field MULLBERRY CREEK  
 County FORD  
 State KANSAS

Company VINCENT OIL CORPORATION  
 Well KEOUGH #7-34  
 Field MULLBERRY CREEK  
 County FORD State KANSAS

Location: AP1 # : 15-057-20985-0000  
 2582' FSL & 2409' FVL  
 NE - NE - NE - SW  
 Permanent Datum GROUND LEVEL Elevation 2535  
 Log Measured From KELLY BUSHING 12' A.G.L.  
 Drilling Measured From KELLY BUSHING  
 SEC 34 TWP 28S RGE 23W  
 Other Services  
 CDL/CNL/PE  
 MEL/SONIC  
 Elevation  
 K.B. 2547  
 D.F. 2545  
 G.L. 2535

Date	9/23/17
Run Number	ONE
Depth Driller	5370
Depth Logger	5372
Bottom Logged Interval	5370
Top Log Interval	00
Casing Driller	8 5/8" @ 690'
Casing Logger	690
Bit Size	7 7/8"
Type Fluid in Hole	CHEMICAL MUD
Density / Viscosity	9.4/85
pH / Fluid Loss	9.0/11.2
Source of Sample	FLOWLINE
Rim @ Meas. Temp	.400 @ 80F
Rmf @ Meas. Temp	.300 @ 80F
Rmc @ Meas. Temp	.480 @ 80F
Source of Rmf / Rmc	MEASUREMENT
Rim @ BHT	.250 @ 128F
Time Circulation Stopped	3 HOURS
Time Logger on Bottom	7:15 P.M.
Maximum Recorded Temperature	128F
Equipment Number	922339
Location	HAYS, KANSAS
Recorded By	JEFF LUEBBERS
Witnessed By	TOM DUDGEON

<<< Fold Here >>>

All interpretations are opinions based on inferences from electrical or other measurements and we cannot and do not guarantee the accuracy or correctness of any interpretation, and we shall not, except in the case of gross or willful negligence on our part, be liable or responsible for any loss, costs, damages, or expenses incurred or sustained by anyone resulting from any interpretation made by any of our officers, agents or employees. These interpretations are also subject to our general terms and conditions set out in our current Price Schedule.

### Comments

THANK YOU FOR USING ELI WIRELINE HAYS, KANSAS (785) 628-6395  
 DIRECTIONS  
 KINGSDOWN, KS. & HWY 54, 2N. ON "RD. 125" TO "WILBURN RD.", 4W., N. INTO ACROSS FROM HOUSE



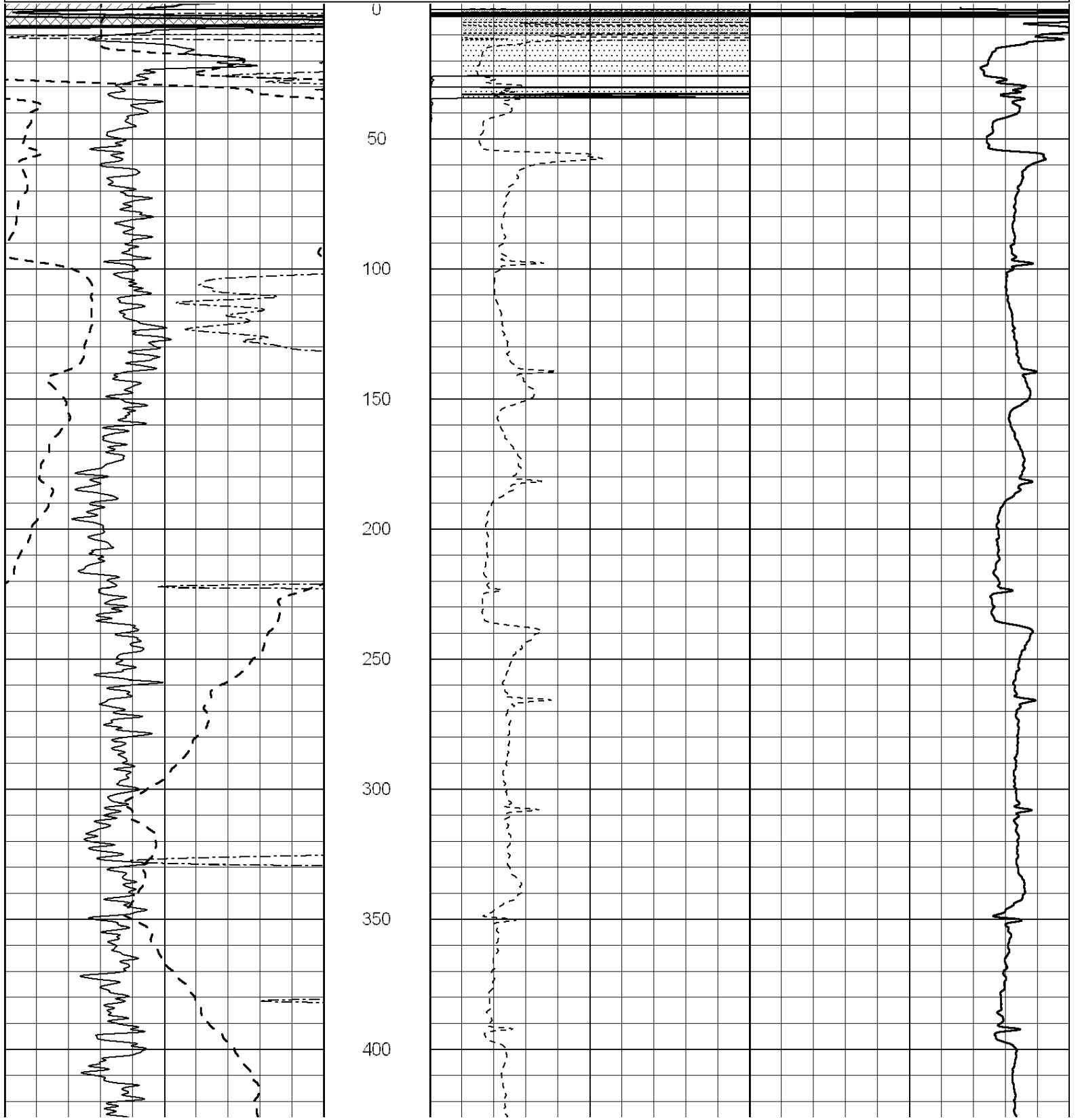
# MAIN SECTION

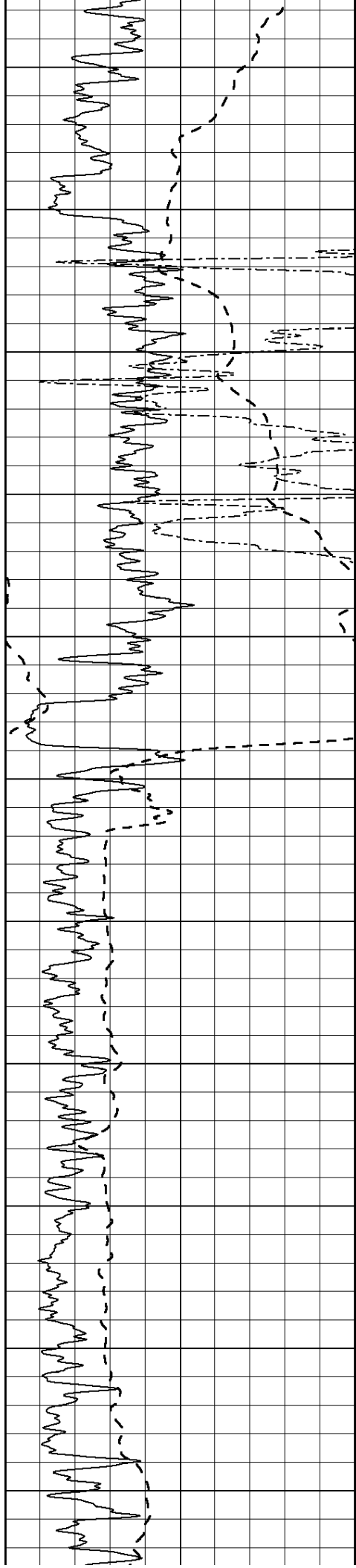
Database File: 1830pe.db  
 Dataset Pathname: pass3.6  
 Presentation Format: dil2  
 Dataset Creation: Sat Sep 23 20:52:05 2017  
 Charted by: Depth in Feet scaled 1:600

0	Gamma Ray (GAPI)	150
-100	SP (mV)	100
0	RWA (Ohm-m)	1

0	RLL3 (Ohm-m)	50
0	RILD (Ohm-m)	50
1000	CILD (mmho/m)	0

50	RILD X10 (Ohm-m)	500
50	RLL3 X10 (Ohm-m)	500





450

500

550

600

650

700

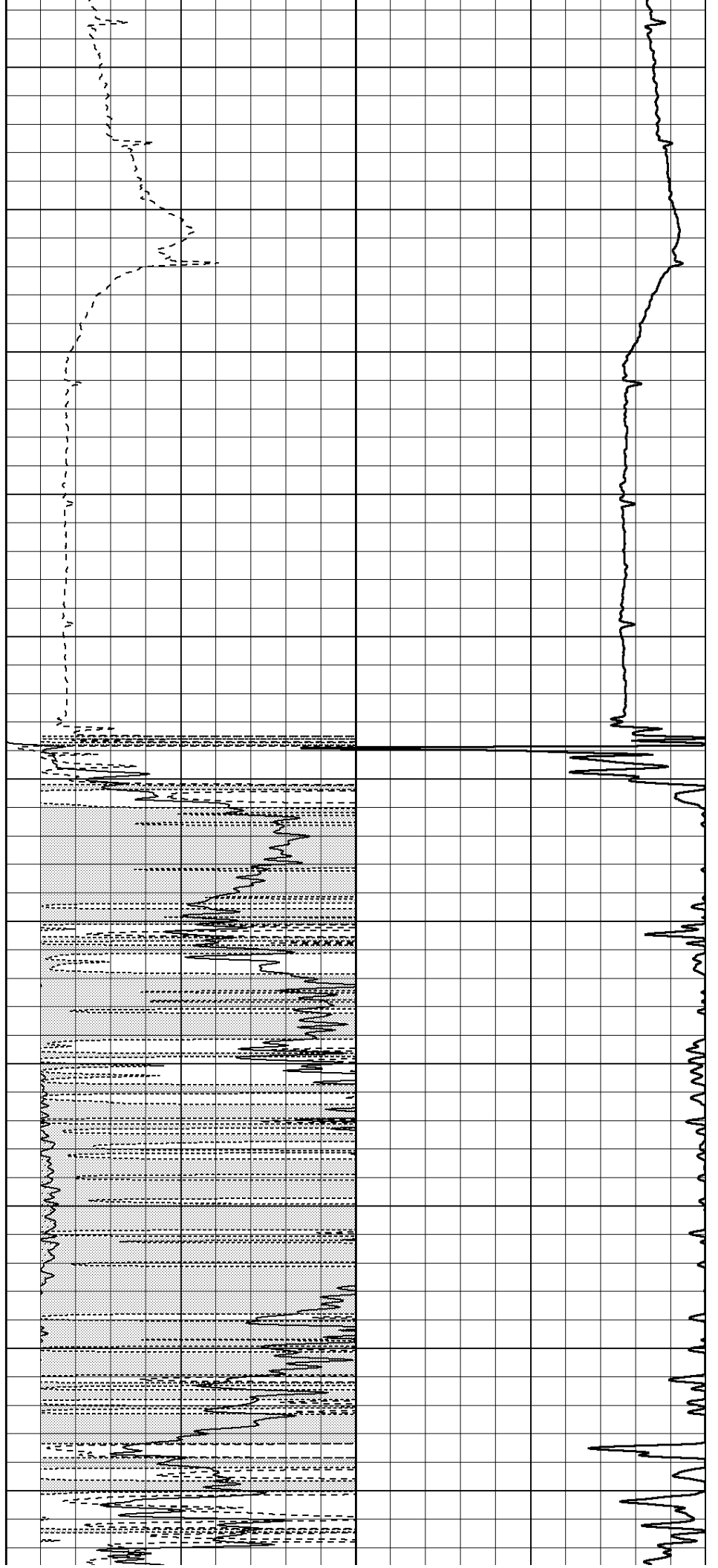
750

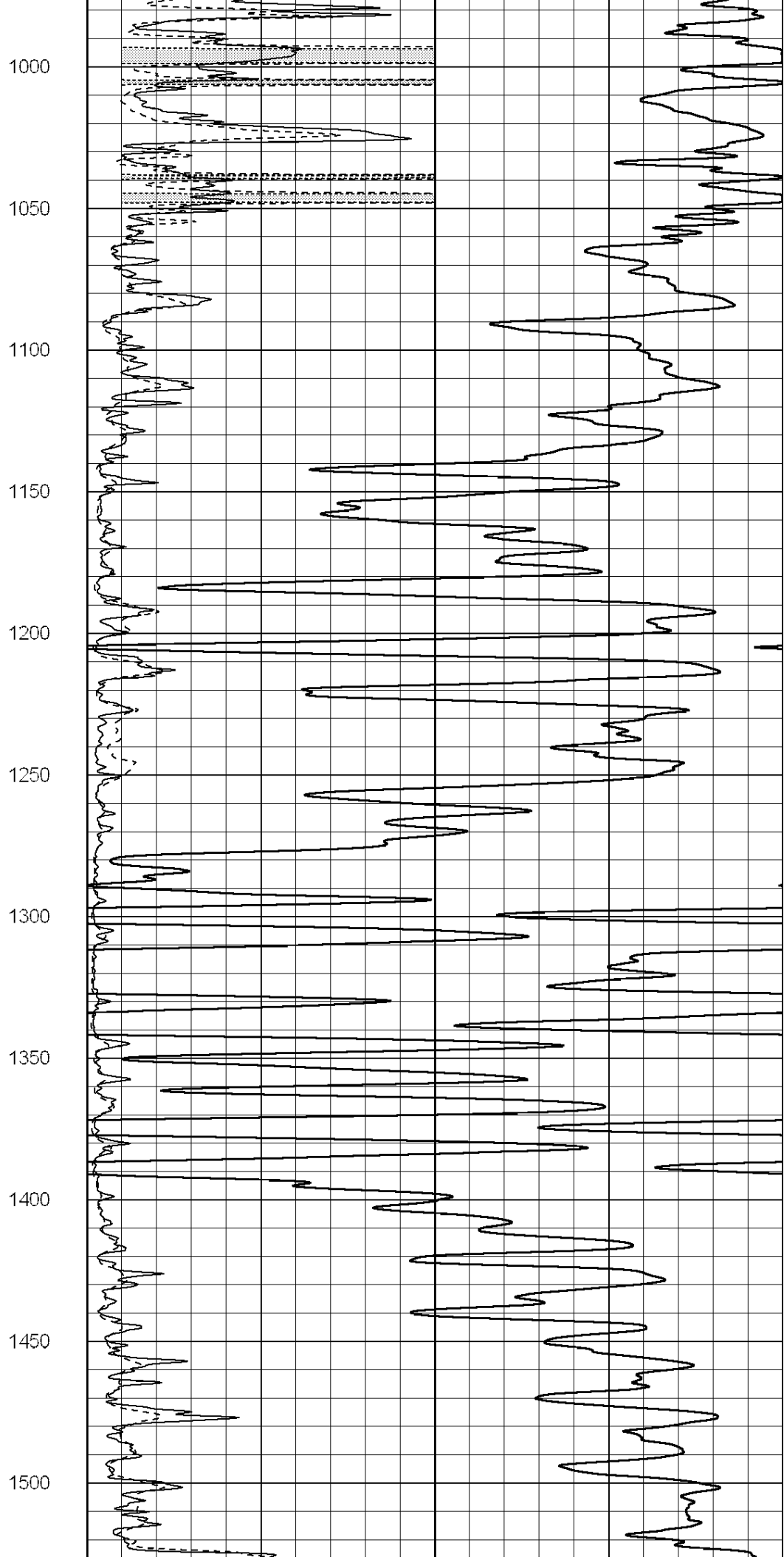
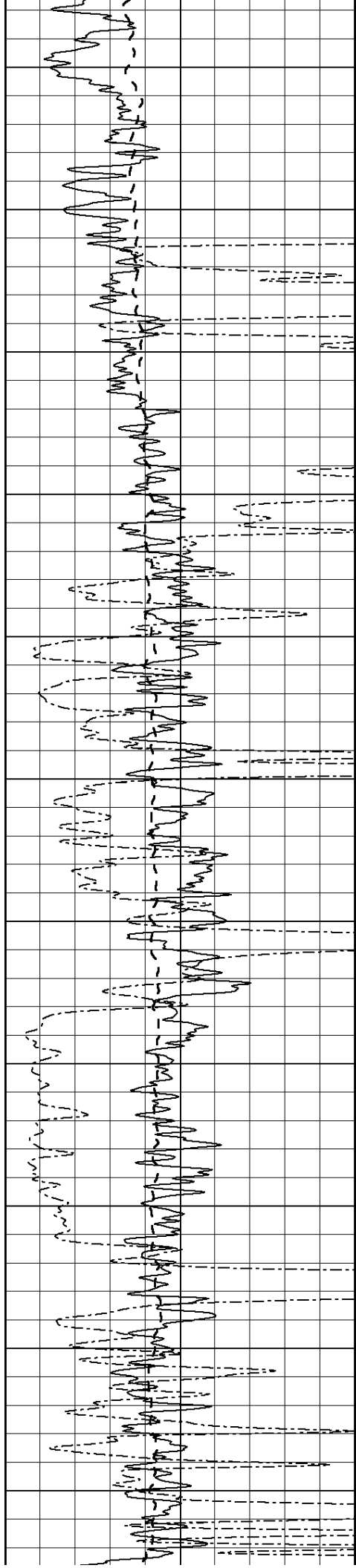
800

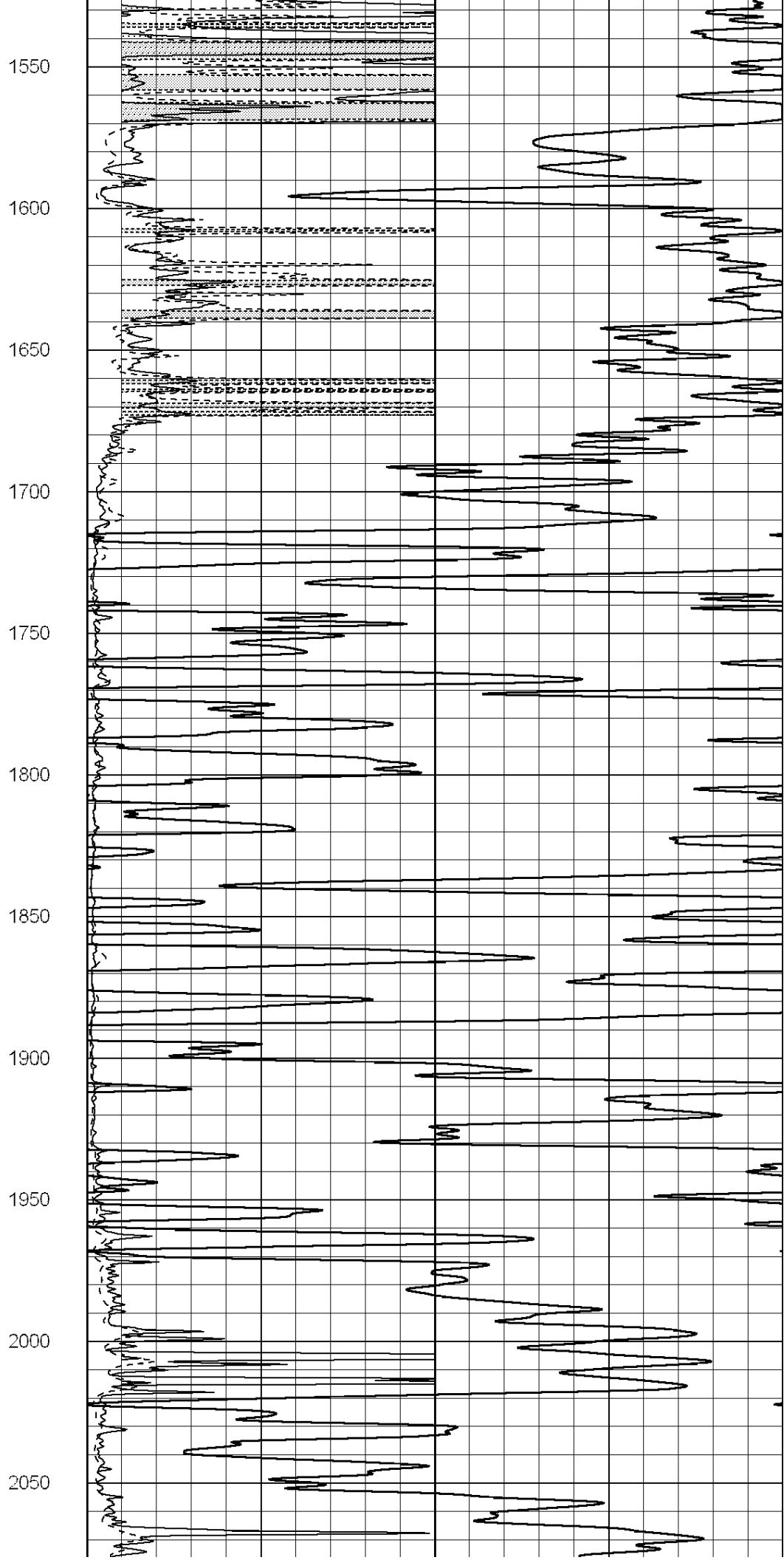
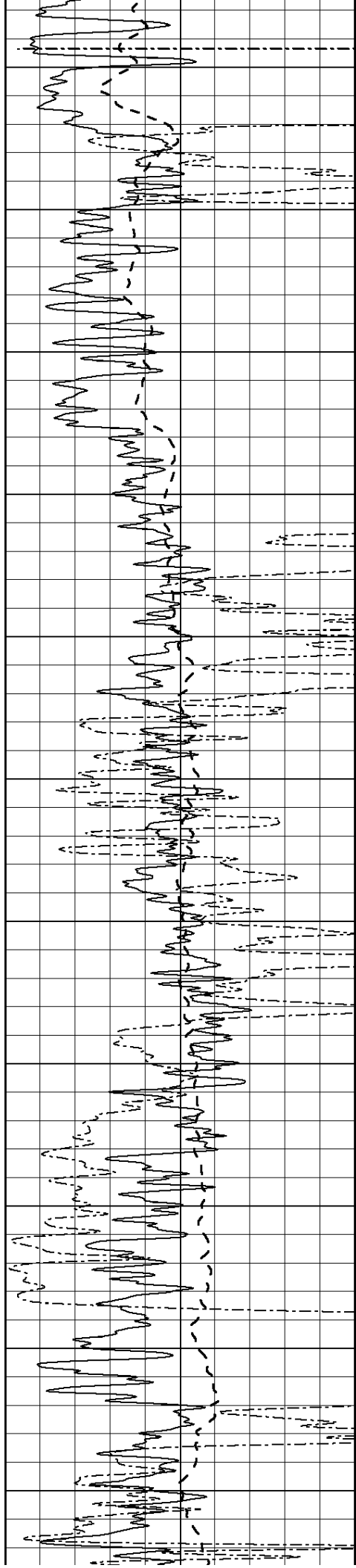
850

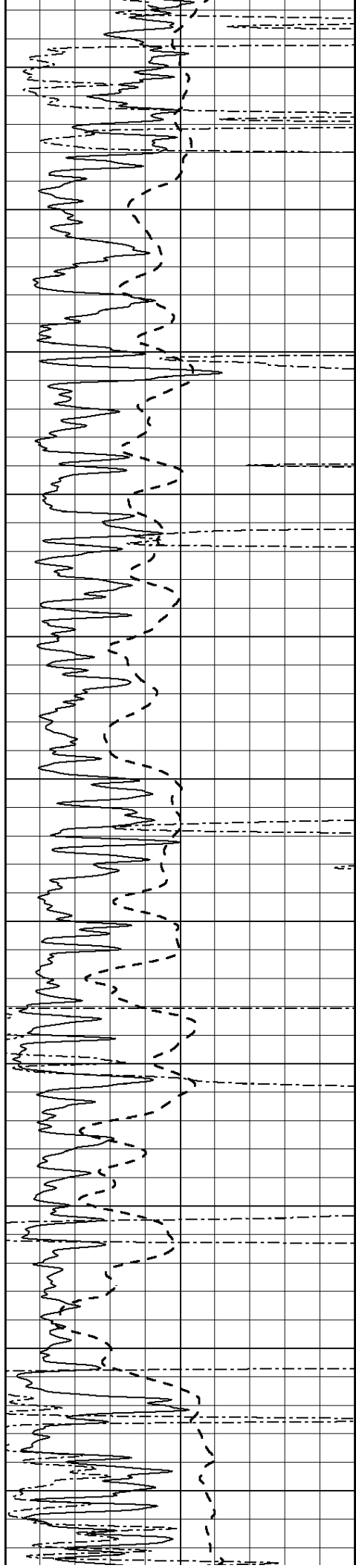
900

950









2100

2150

2200

2250

2300

2350

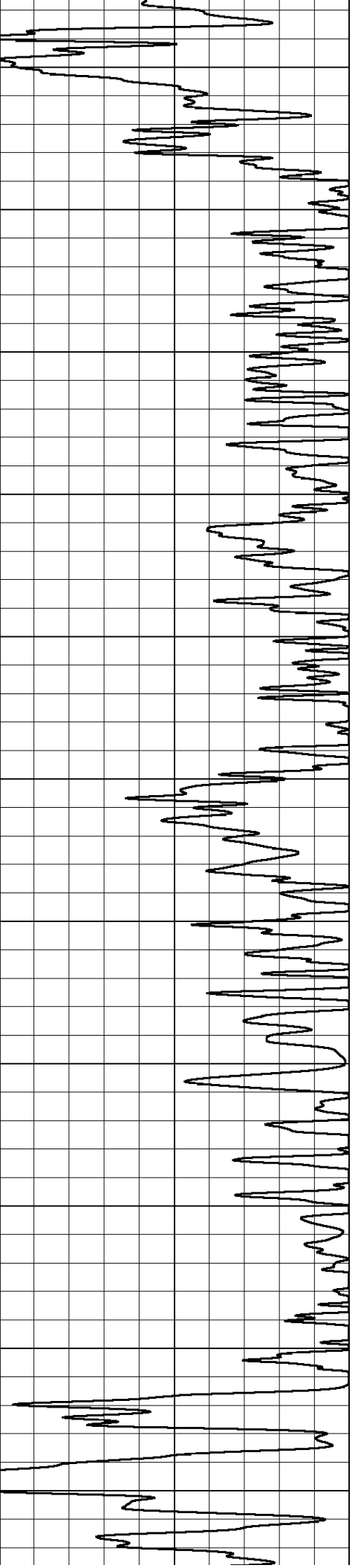
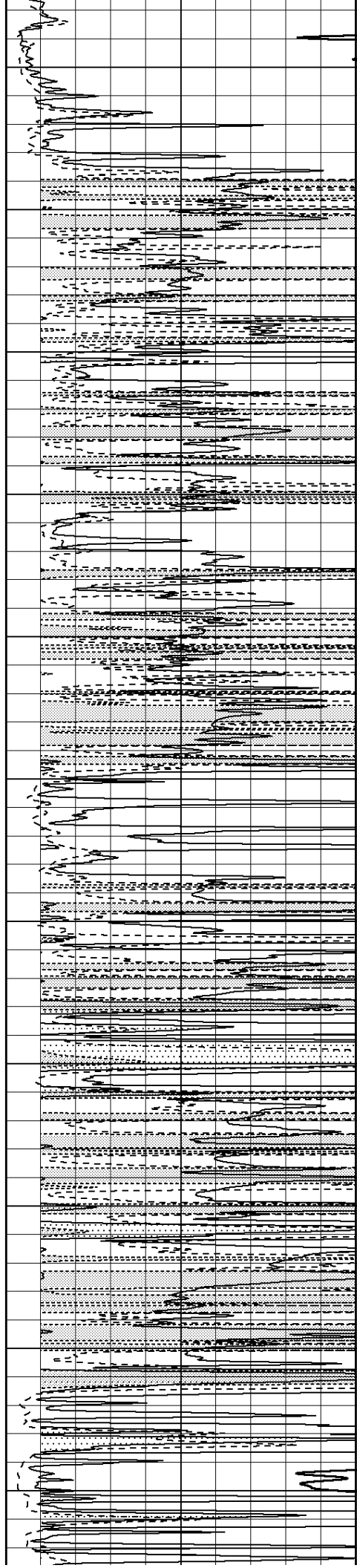
2400

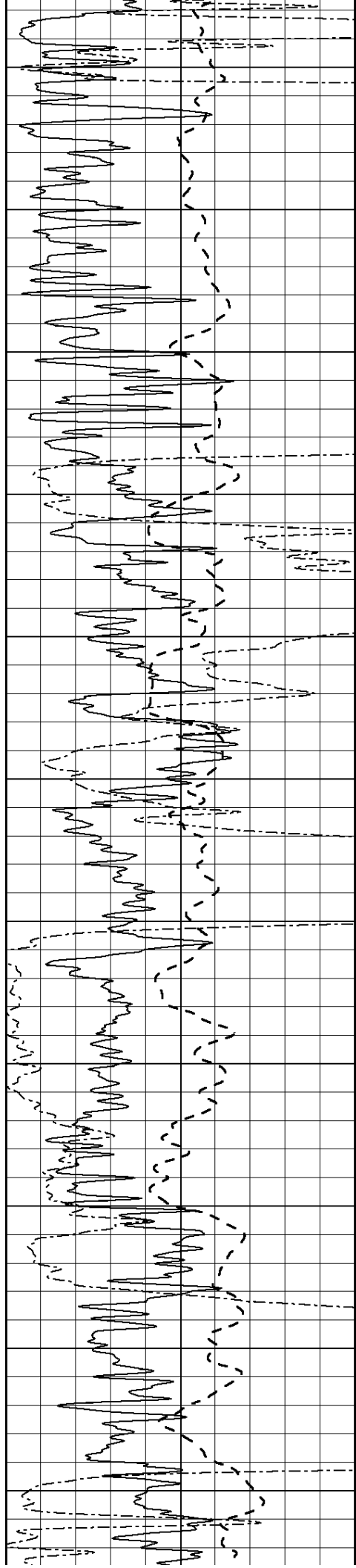
2450

2500

2550

2600





2650

2700

2750

2800

2850

2900

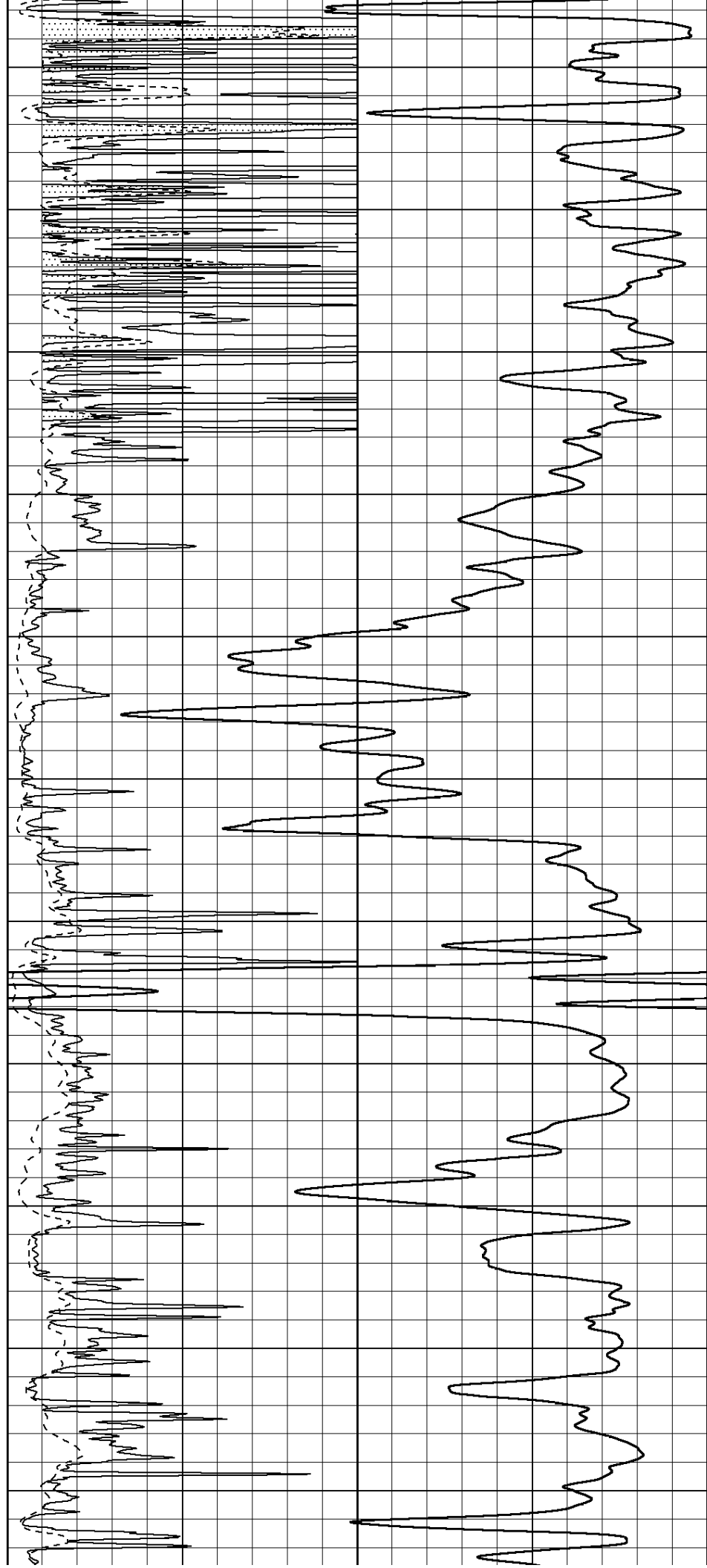
2950

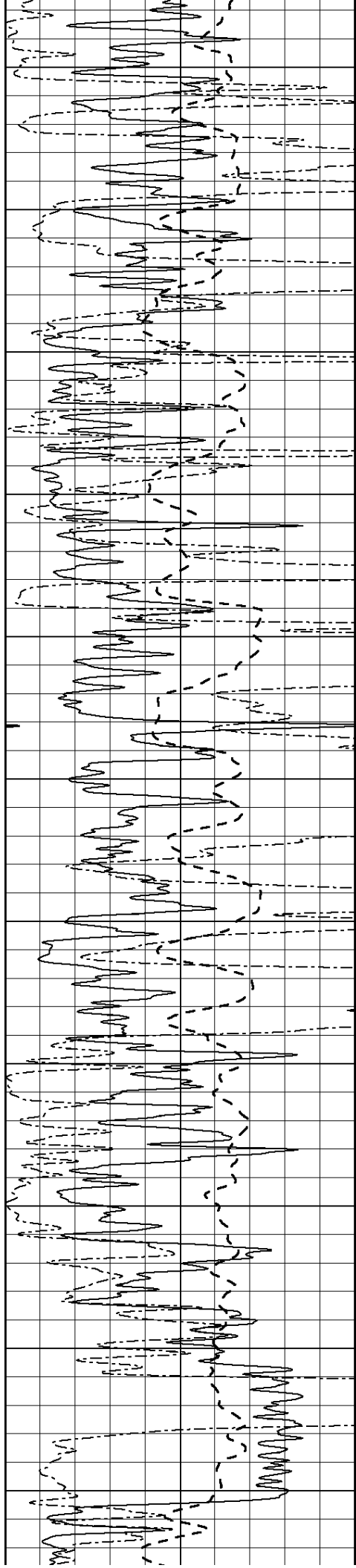
3000

3050

3100

3150





3200

3250

3300

3350

3400

3450

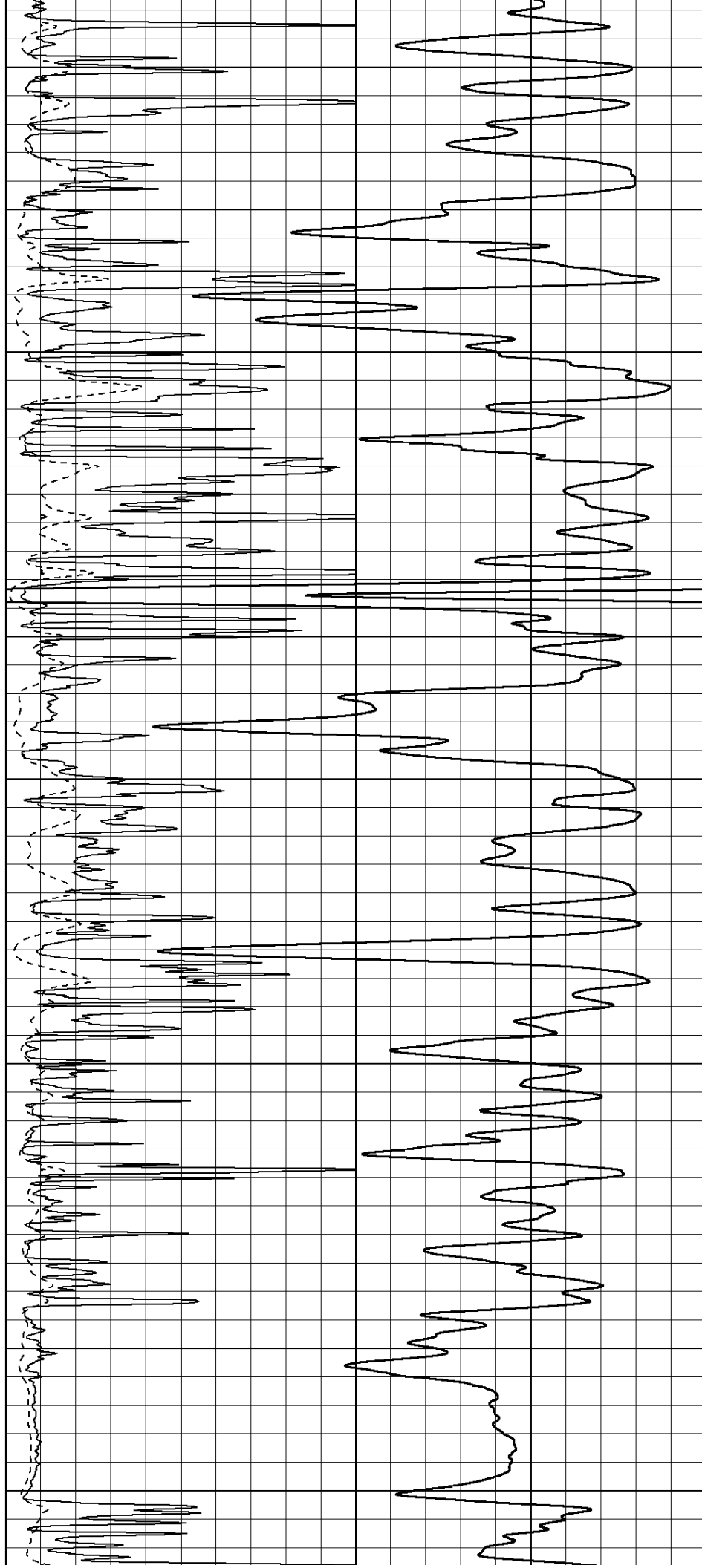
3500

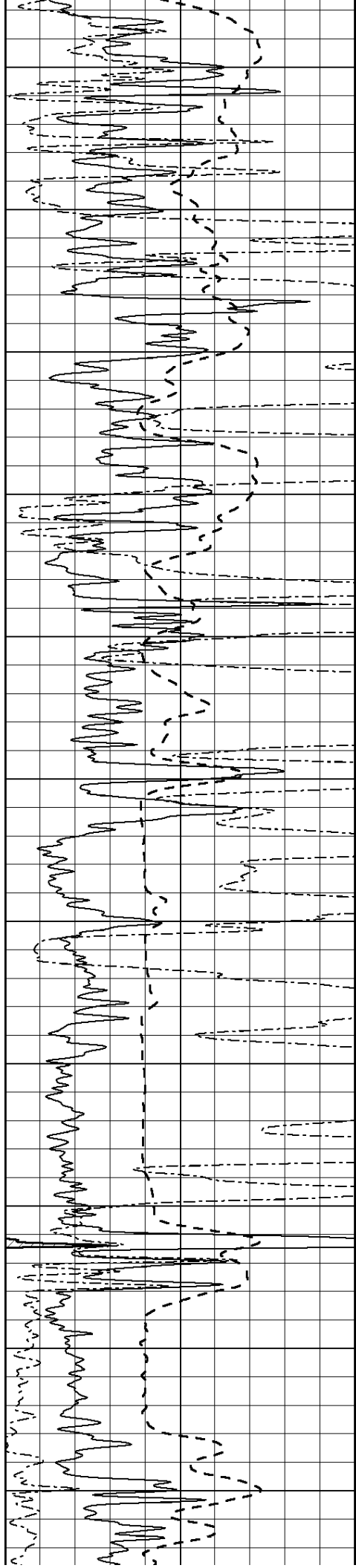
3550

3600

3650

3700





3750

3800

3850

3900

3950

4000

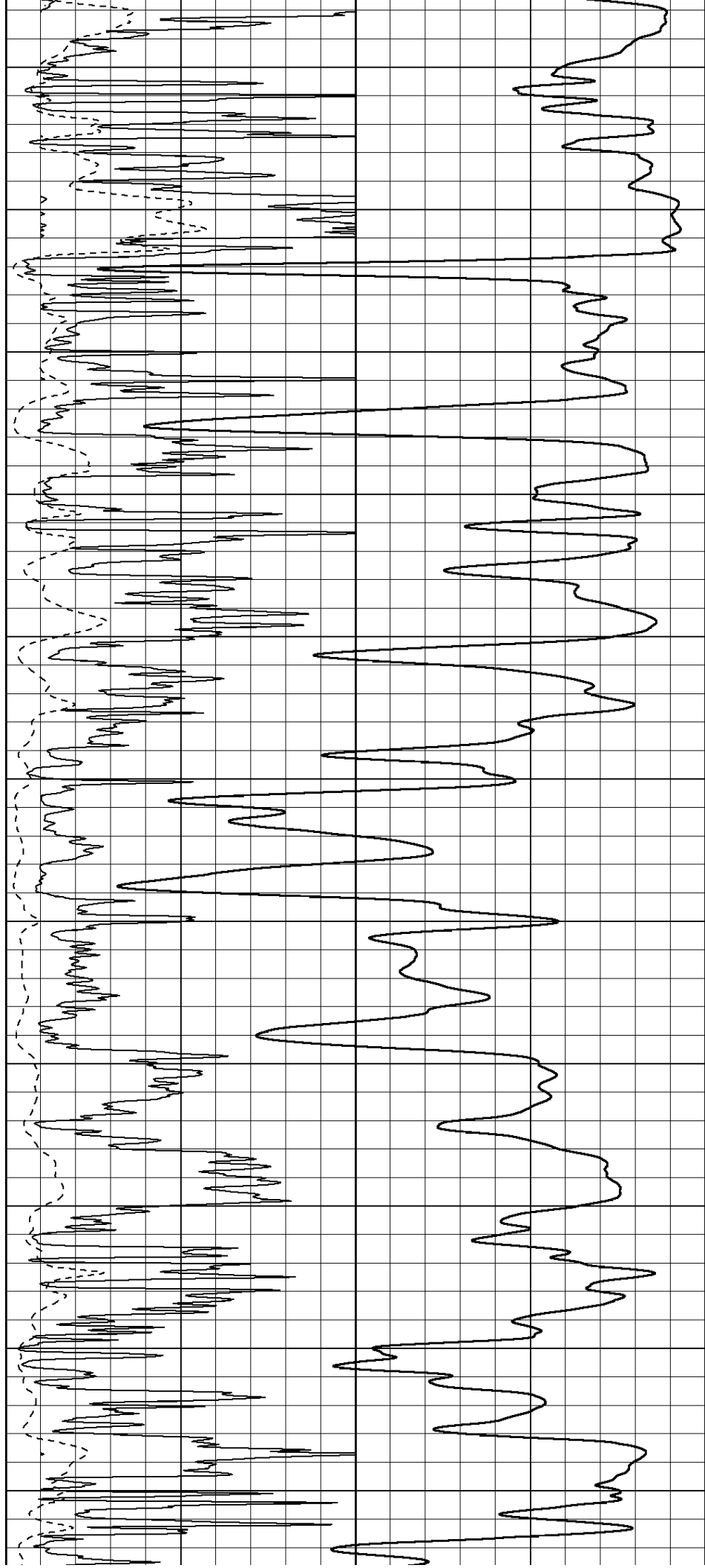
4050

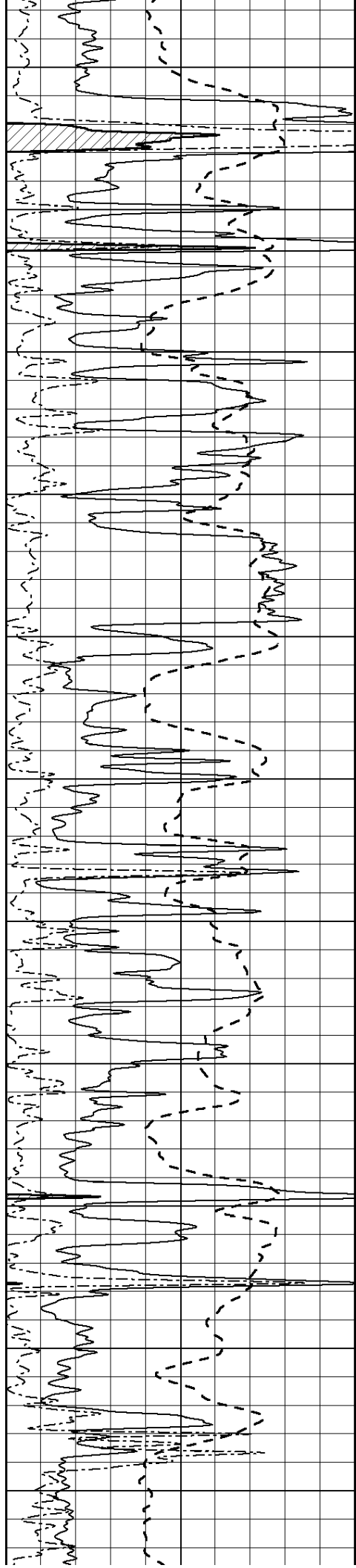
4100

4150

4200

4250





4300

4350

4400

4450

4500

4550

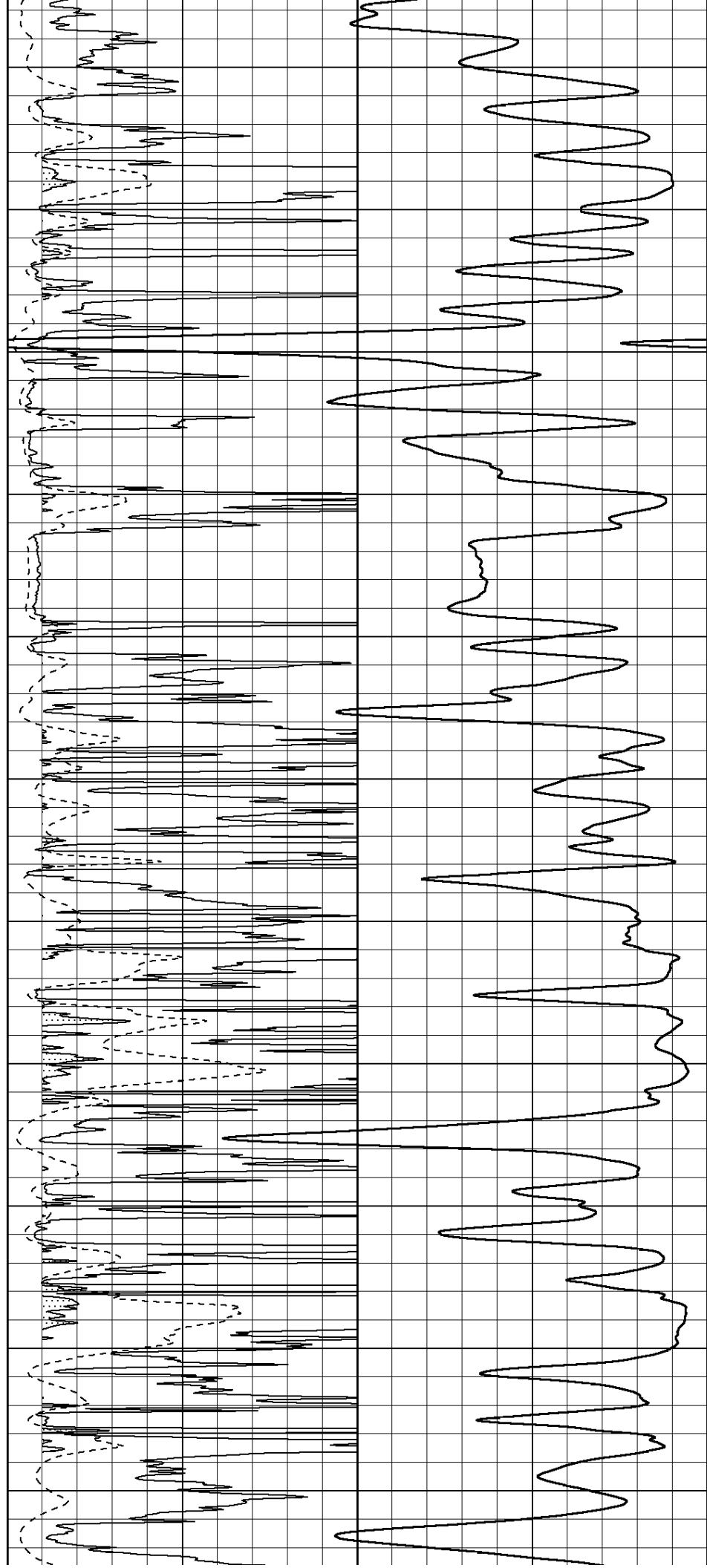
4600

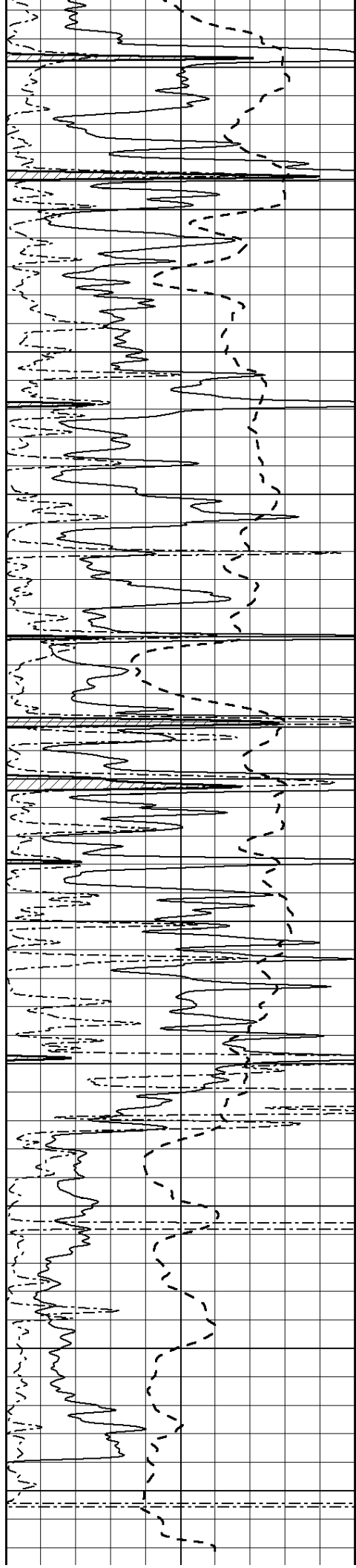
4650

4700

4750

4800





4850

4900

4950

5000

5050

5100

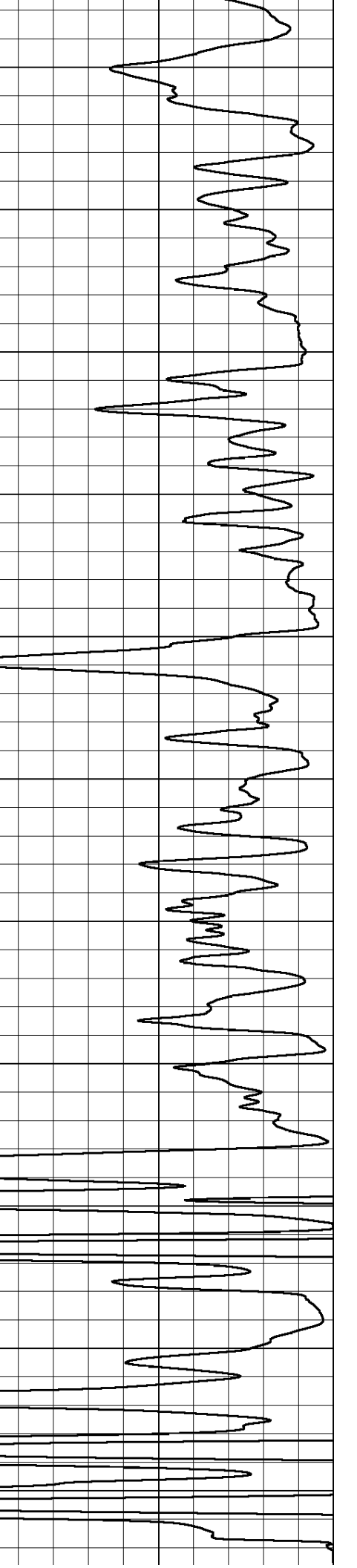
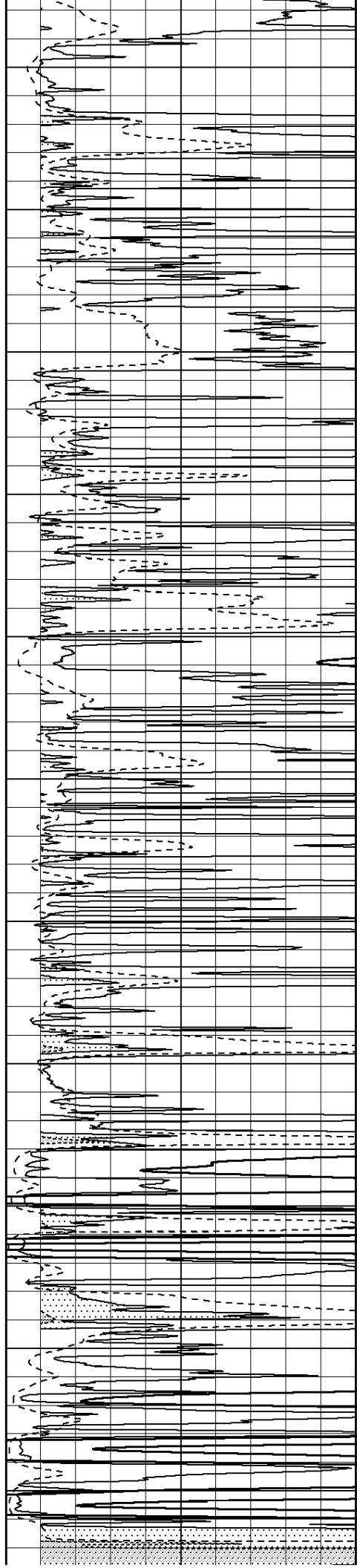
5150

5200

5250

5300

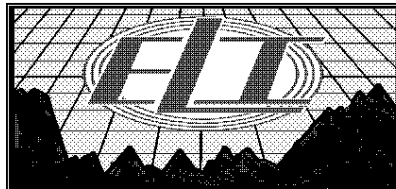
5350



0	Gamma Ray (GAPI)	150
-100	SP (mV)	100
0	RWA (Ohm-m)	1

0	RLL3 (Ohm-m)	50
0	RILD (Ohm-m)	50

1000	CILD (mmho/m)	0
50	RILD X10 (Ohm-m)	500
50	RLL3 X10 (Ohm-m)	500

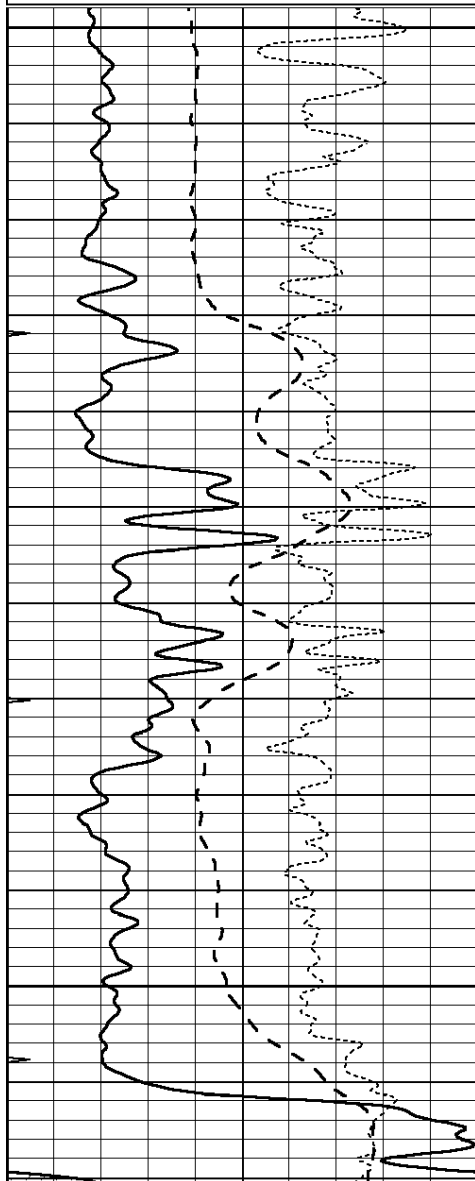


# MAIN SECTION

Database File: 1830pe.db  
 Dataset Pathname: pass3.6  
 Presentation Format: \_dil  
 Dataset Creation: Sat Sep 23 20:52:05 2017  
 Charted by: Depth in Feet scaled 1:240

0	GAMMA RAY (GAPI)	150
-100	SP (mV)	100
-250	Rxo/Rt	50
0	MINMK	20

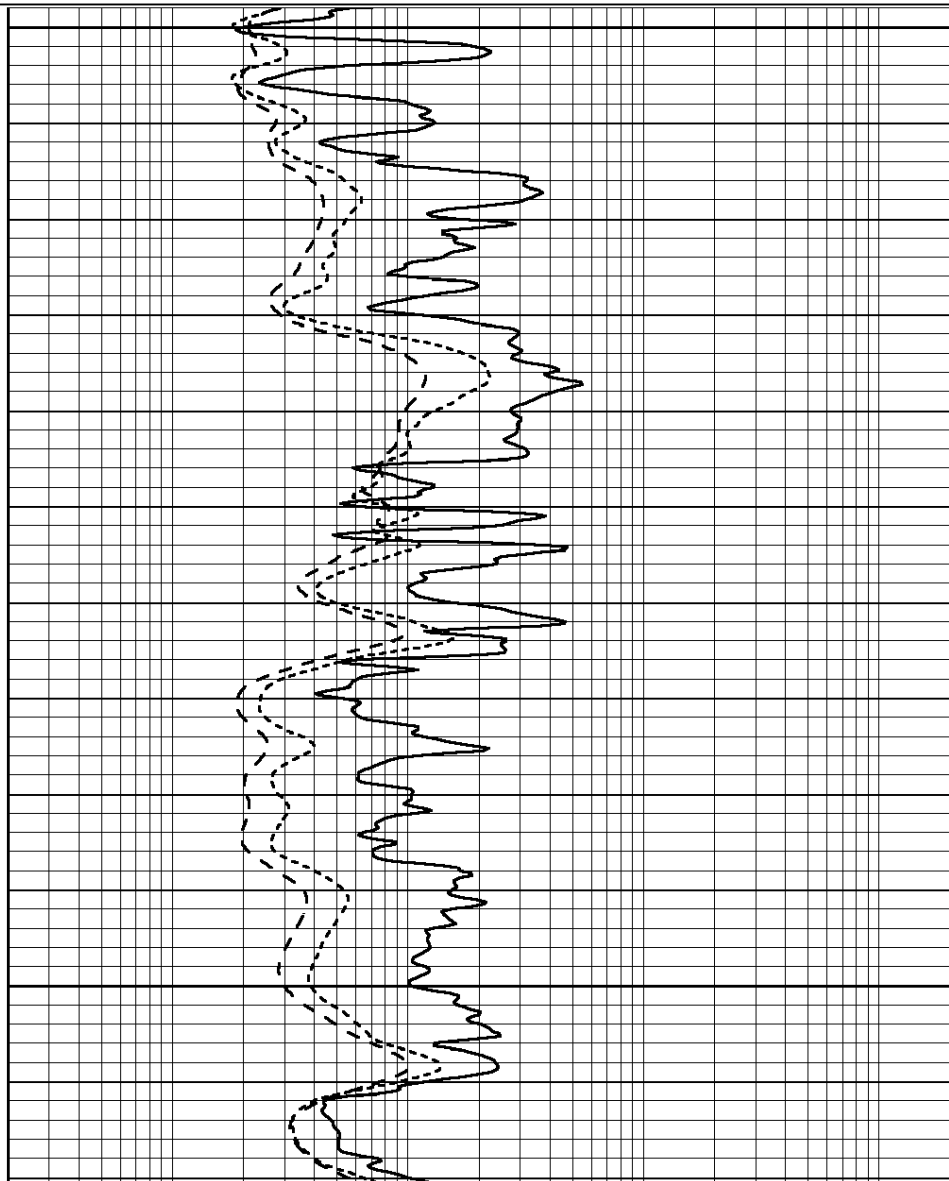
0.2	SHALLOW GUARD (Ohm-m)	2000
0.2	DEEP INDUCTION (Ohm-m)	2000
0.2	MEDIUM INDUCTION (Ohm-m)	2000

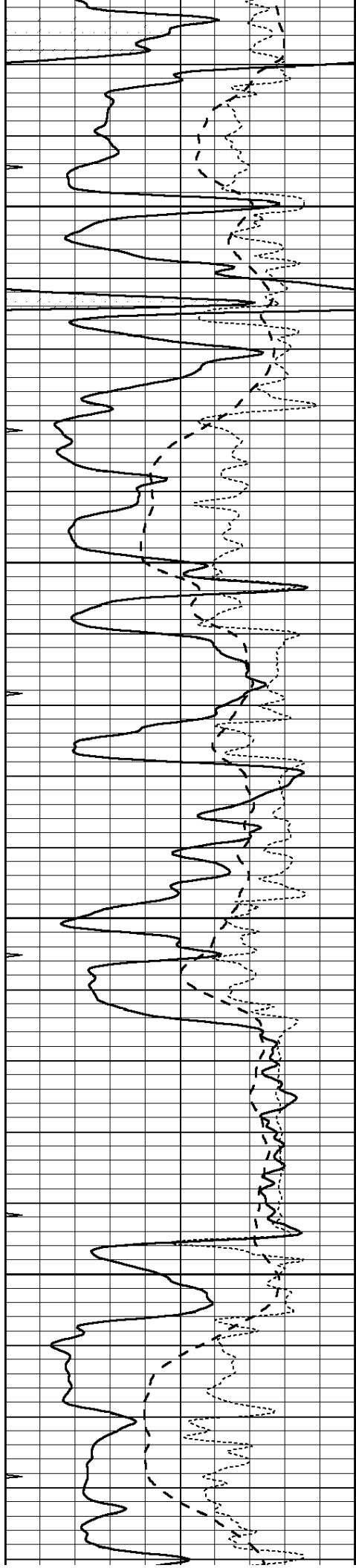


4200

4250

4300



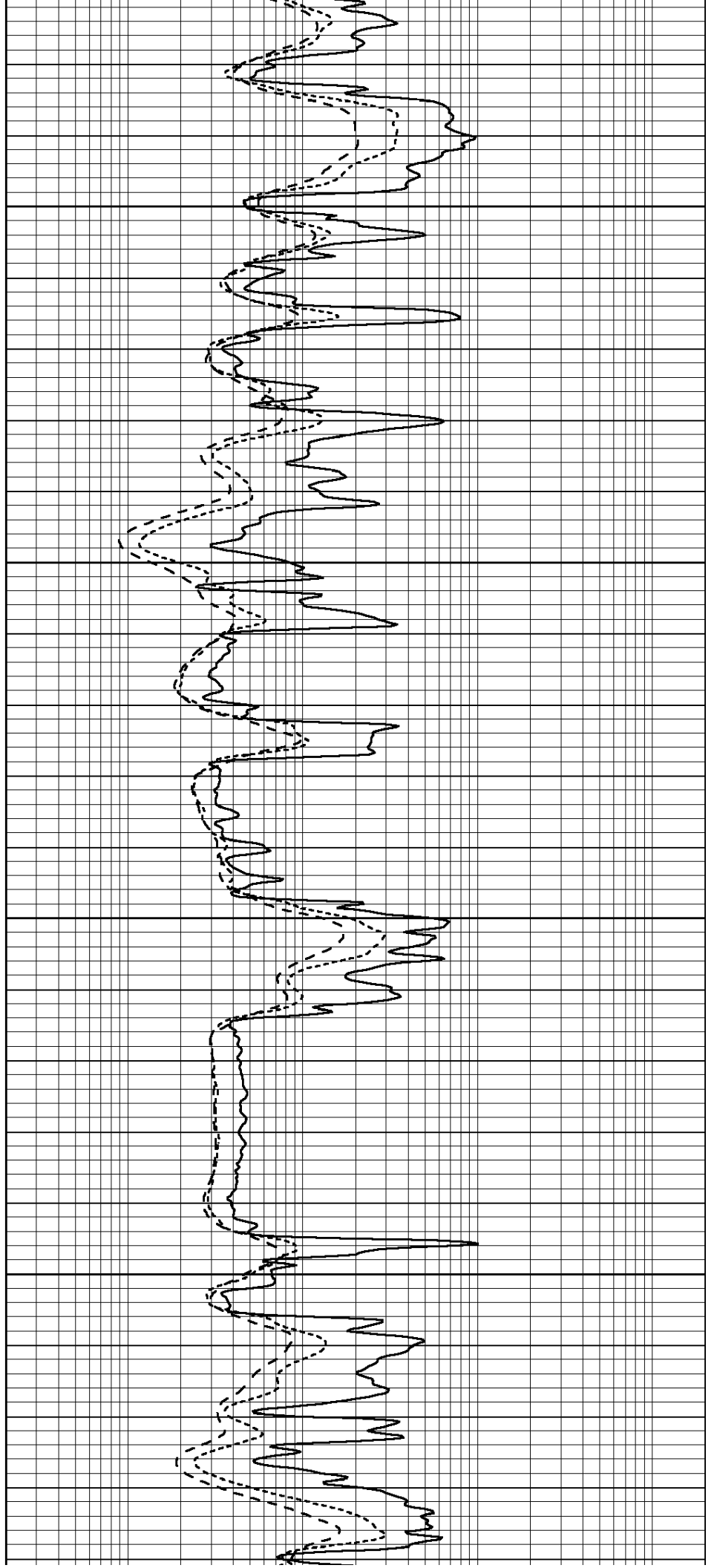


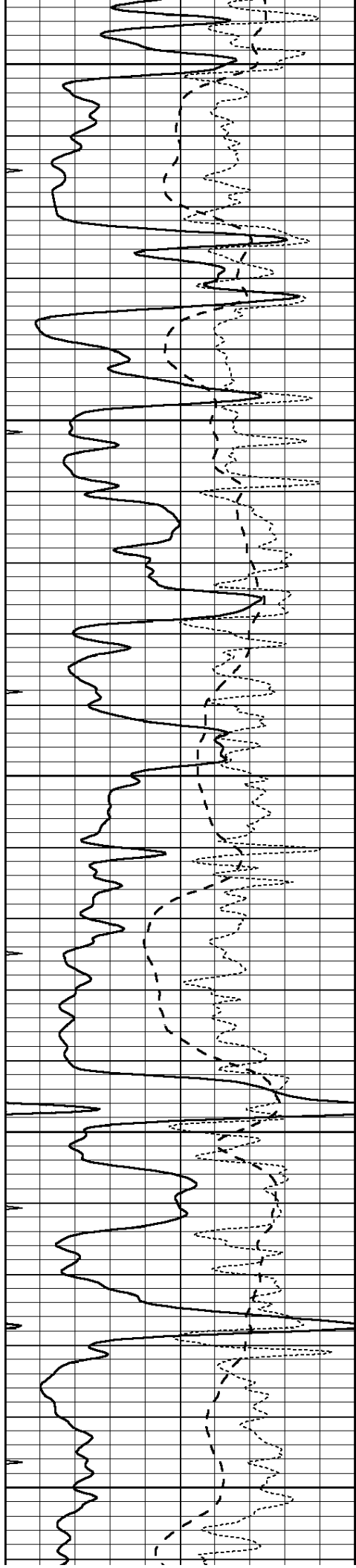
4350

4400

4450

4500





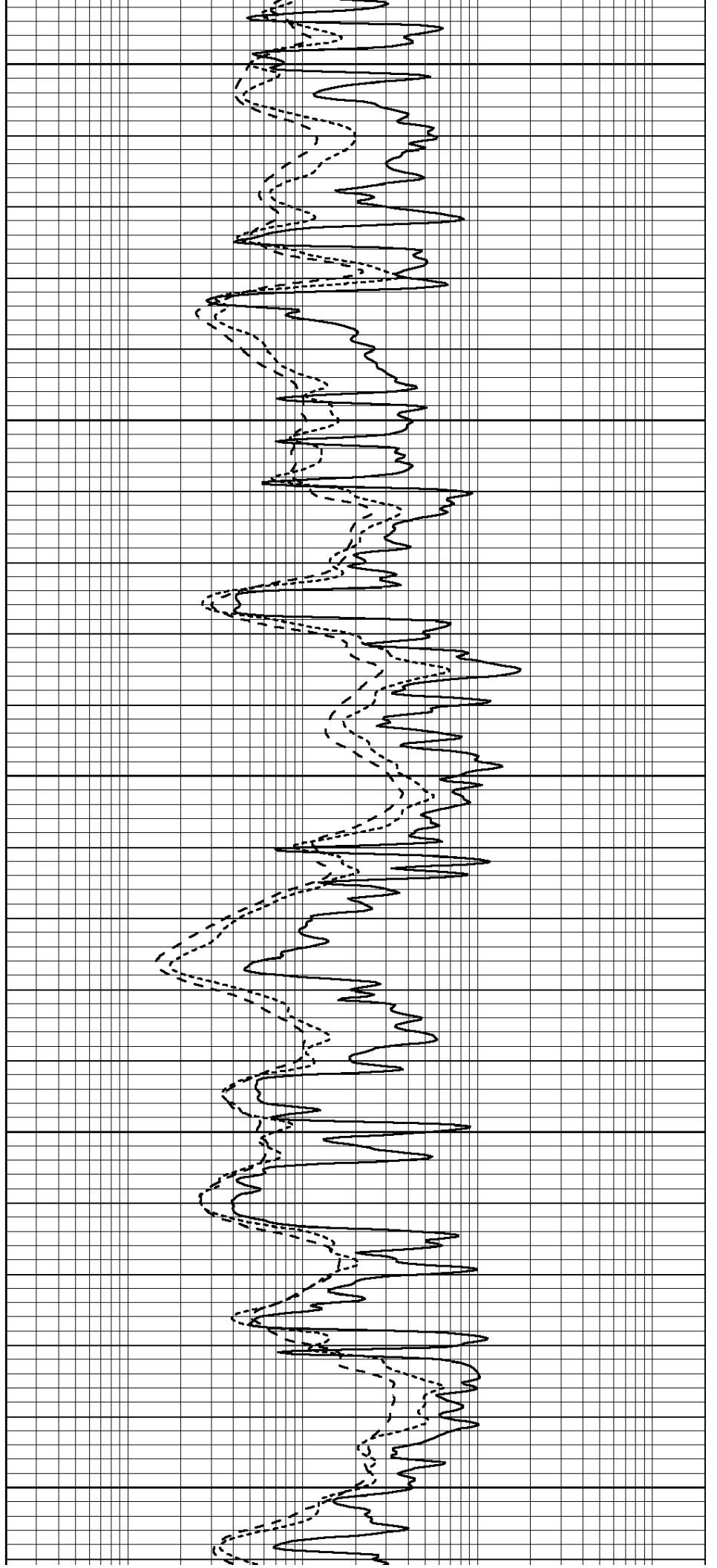
4550

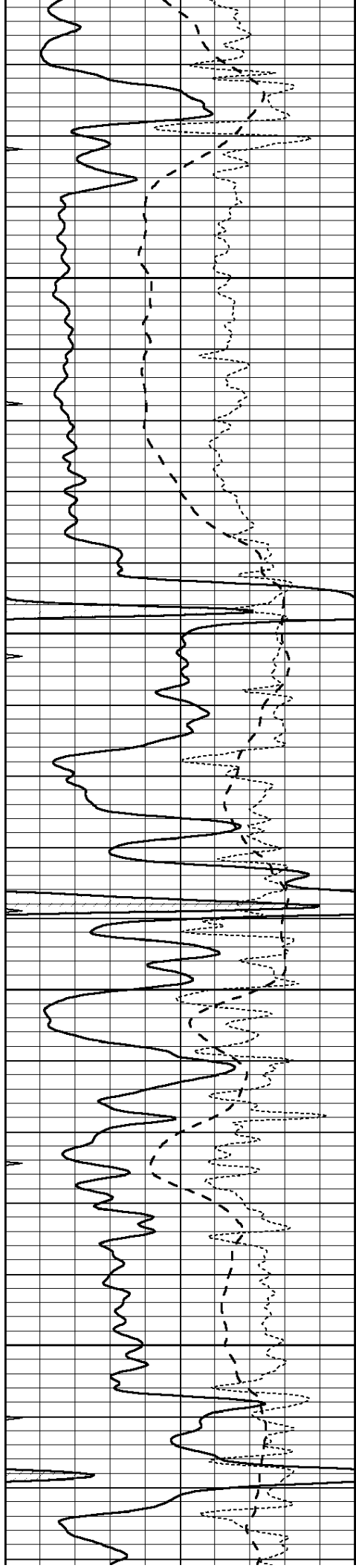
4600

4650

4700

4750



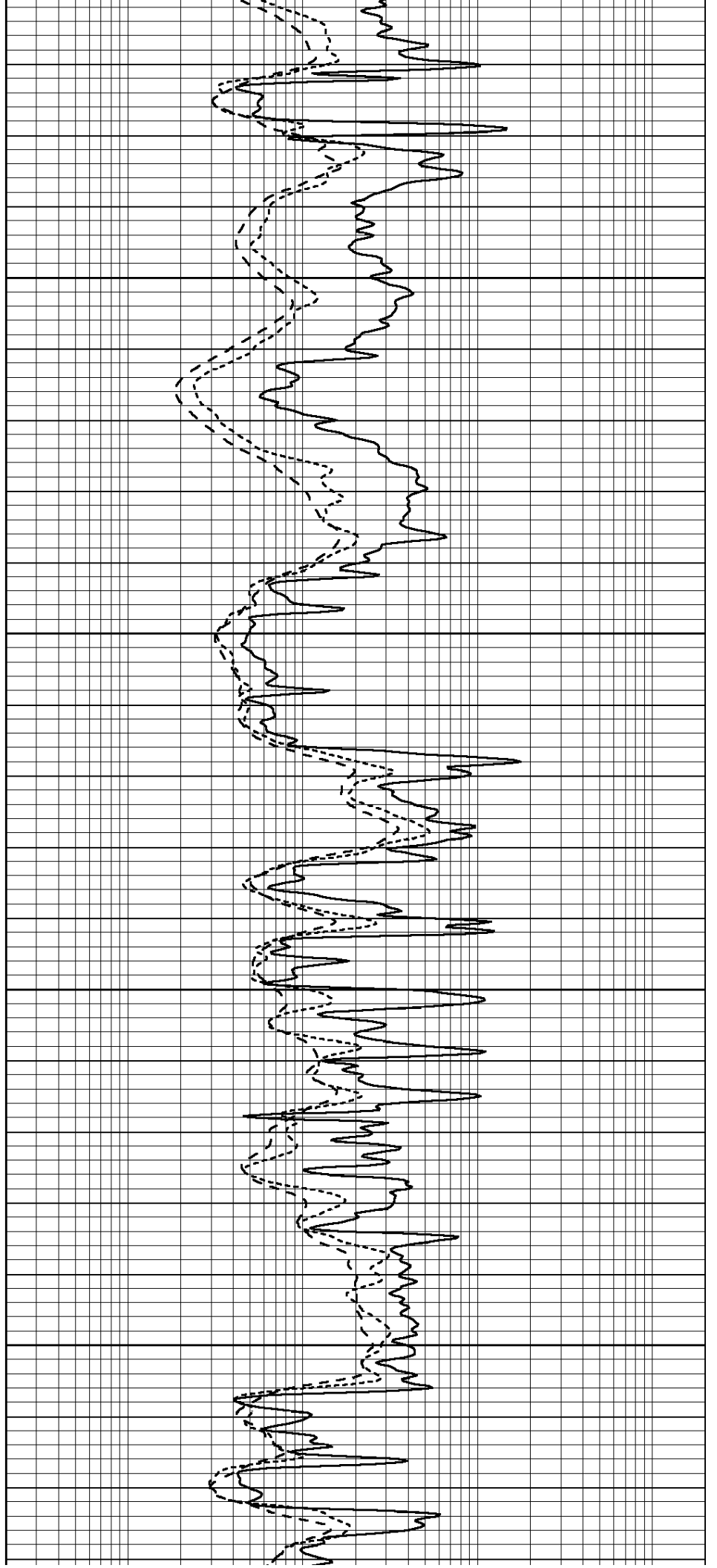


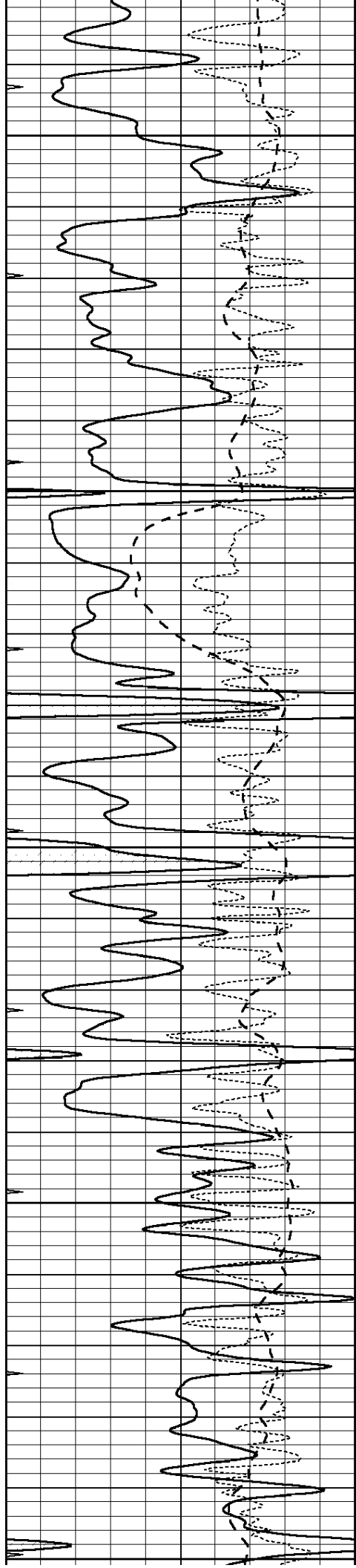
4800

4850

4900

4950





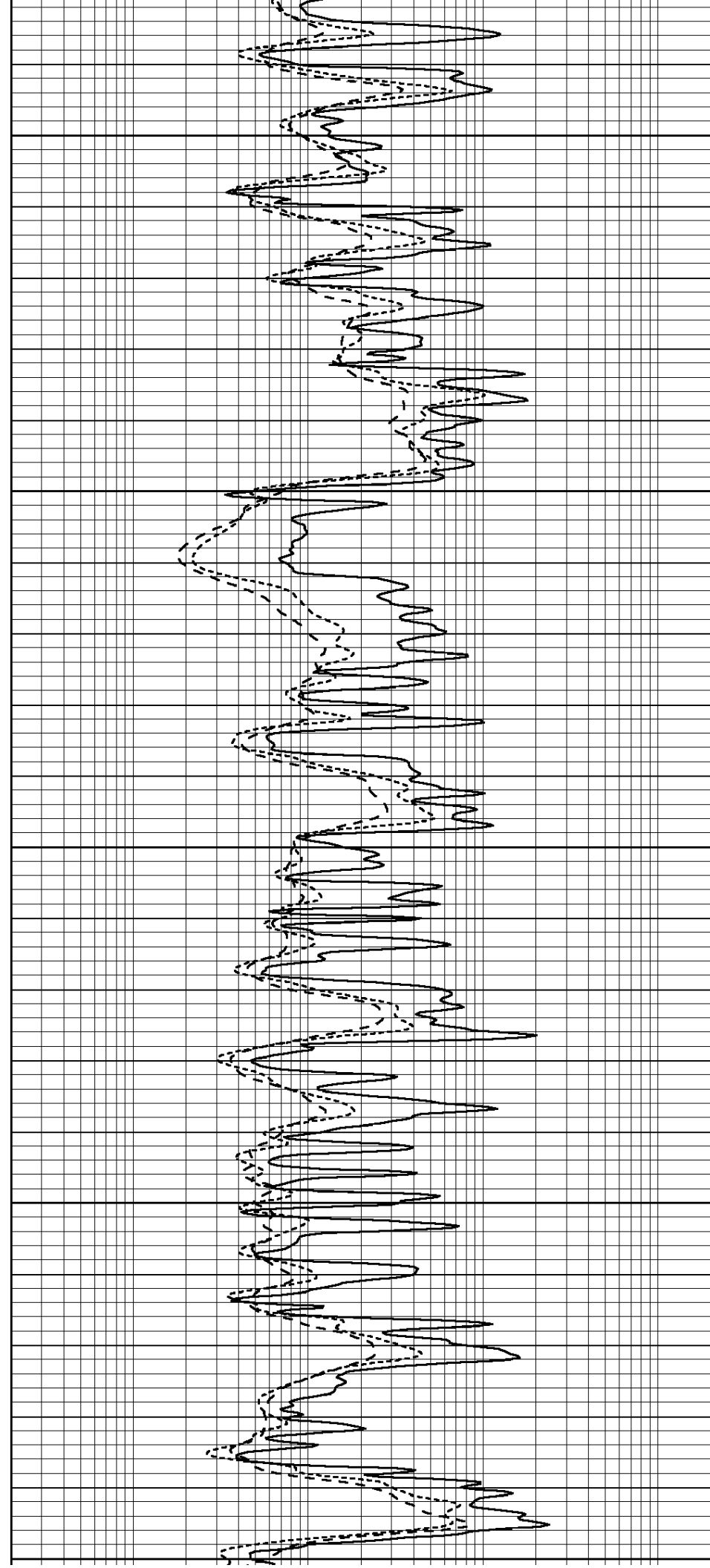
5000

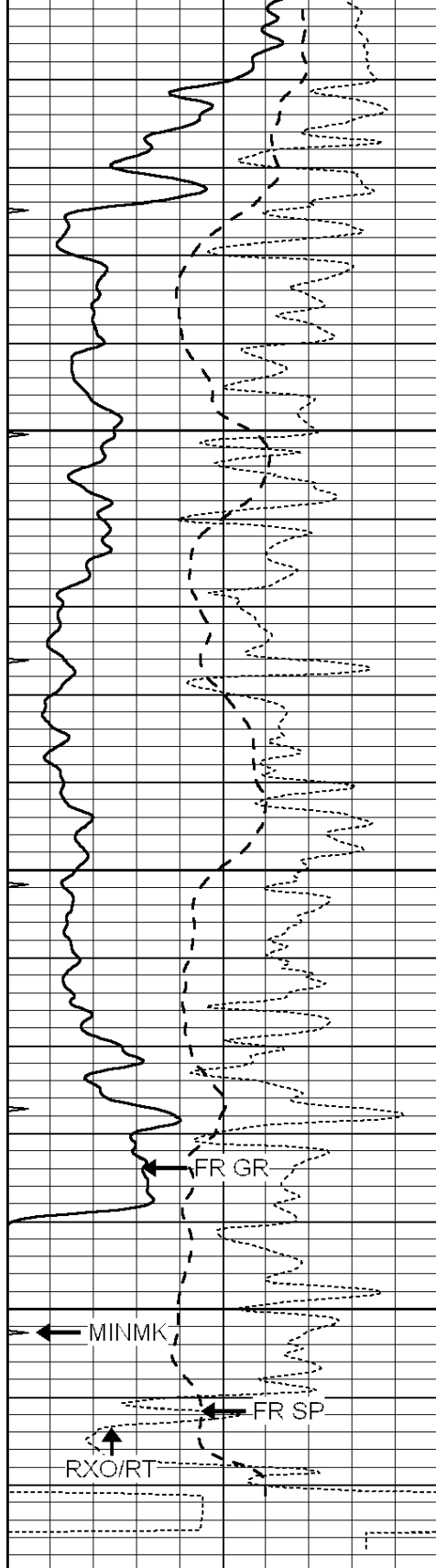
5050

5100

5150

5200



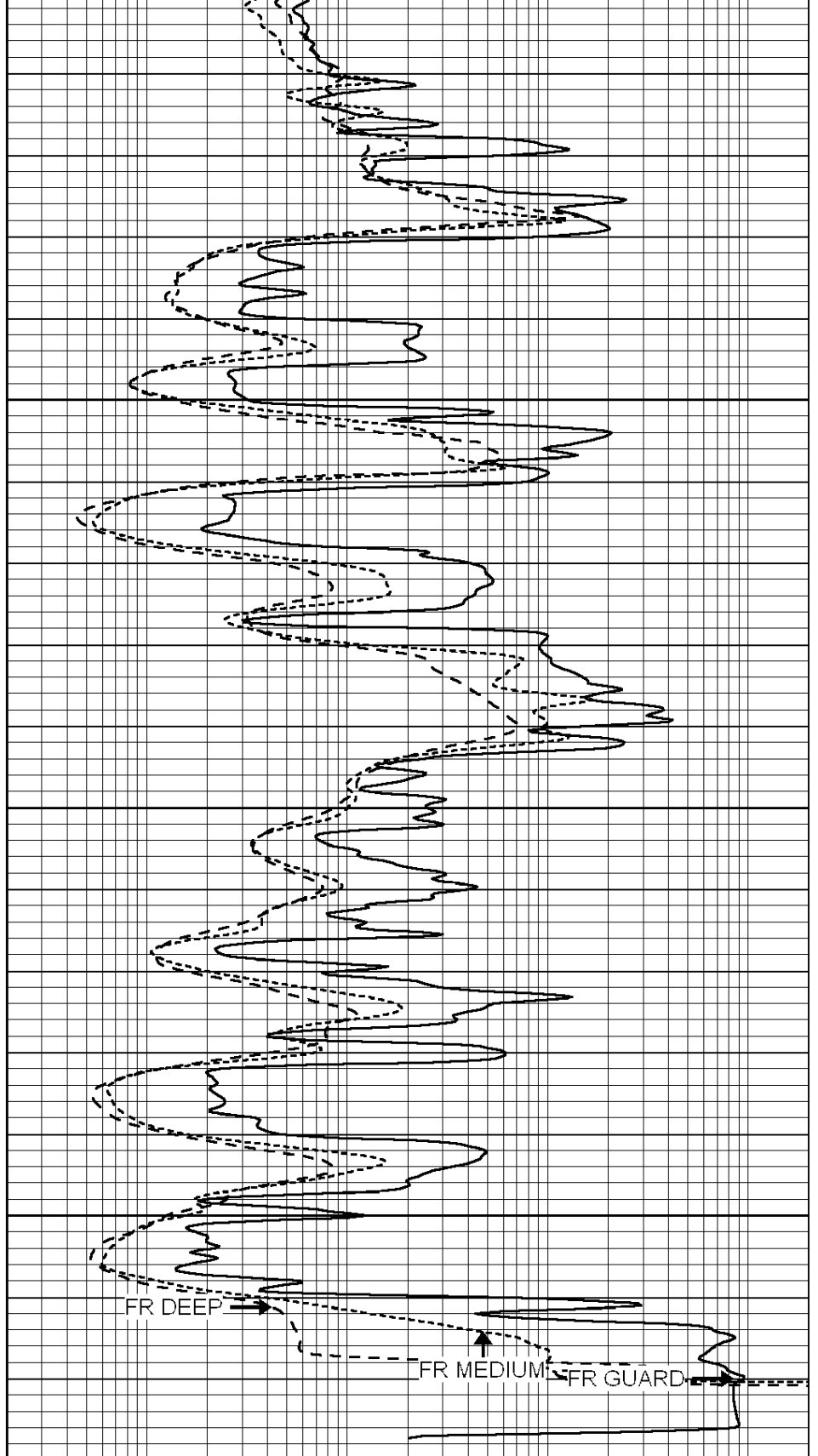


5250

5300

5350

LTD 5372



0	GAMMA RAY (GAPI)	150
-100	SP (mV)	100
-250	Rxo/Rt	50
0	MINMK	20

0.2	SHALLOW GUARD (Ohm-m)	2000
0.2	DEEP INDUCTION (Ohm-m)	2000
0.2	MEDIUM INDUCTION (Ohm-m)	2000



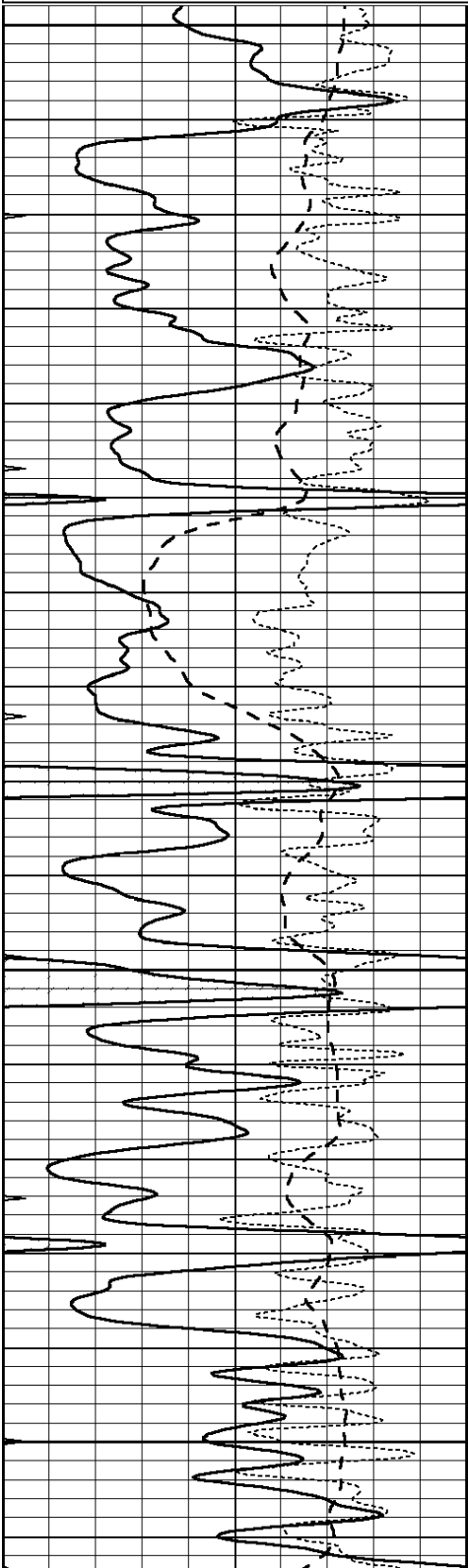
REPEAT SECTION

# REPEAT SECTION

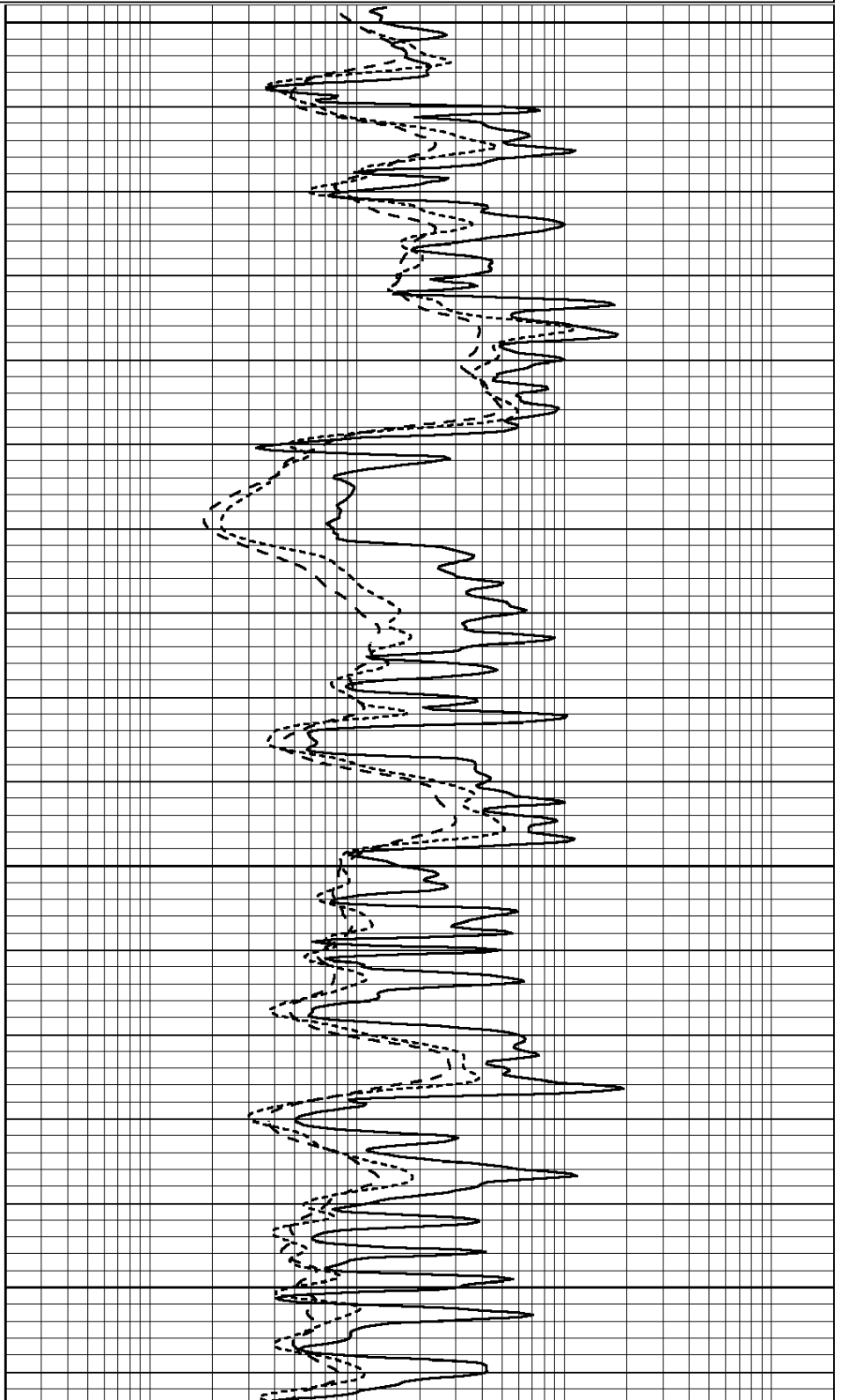
Database File: 1830pe.db  
 Dataset Pathname: pass2.5  
 Presentation Format: \_dil  
 Dataset Creation: Sat Sep 23 19:43:41 2017  
 Charted by: Depth in Feet scaled 1:240

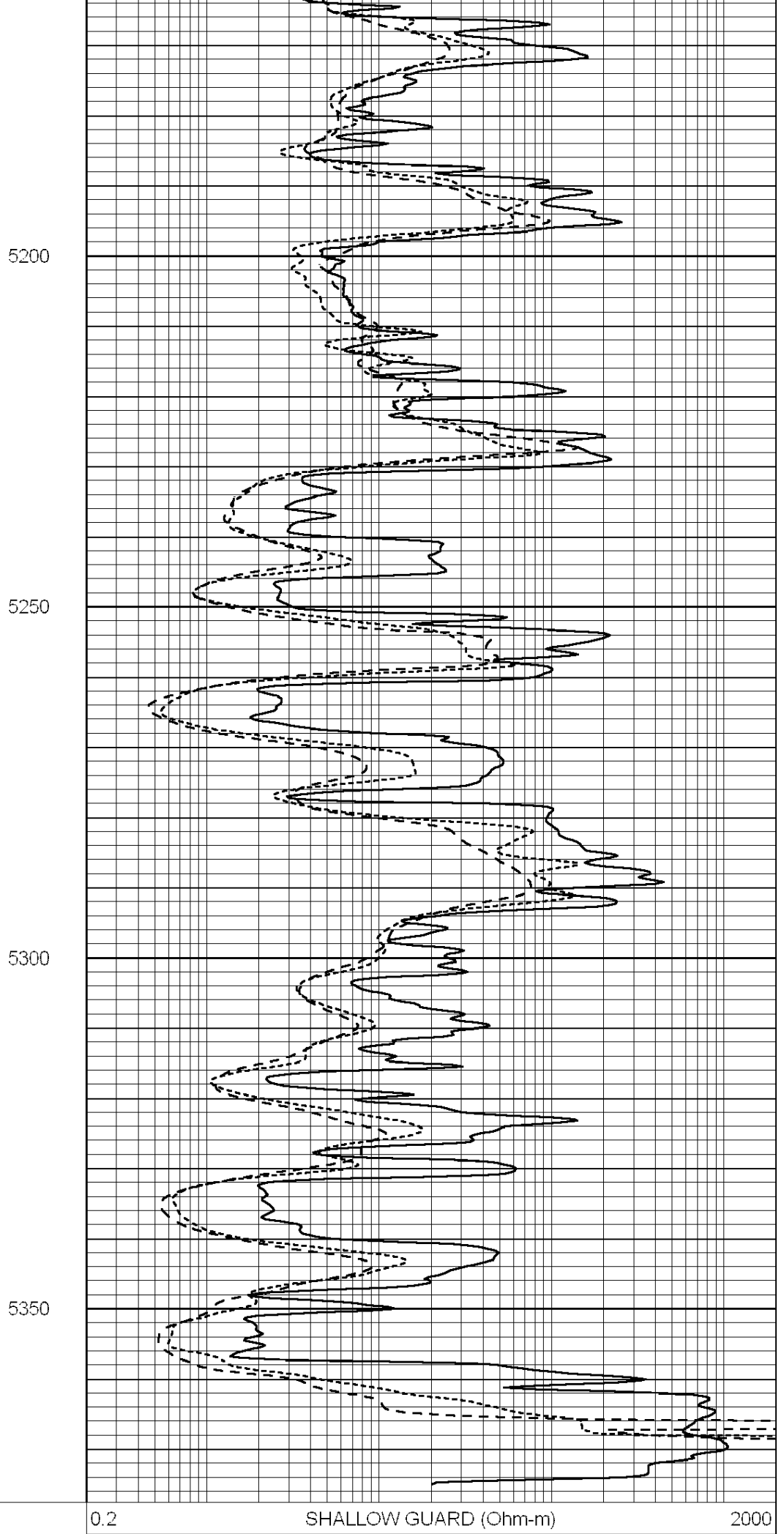
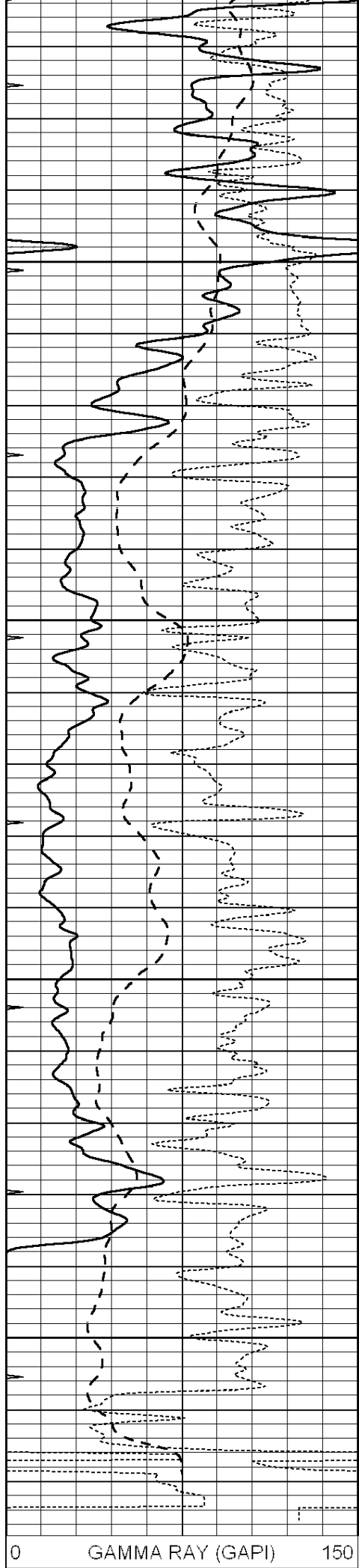
0	GAMMA RAY (GAPI)	150
-100	SP (mV)	100
-250	Rxo/Rt	50
0	MINMK	20

0.2	SHALLOW GUARD (Ohm-m)	2000
0.2	DEEP INDUCTION (Ohm-m)	2000
0.2	MEDIUM INDUCTION (Ohm-m)	2000



5000  
5050  
5100  
5150





-100	SP (mV)	100
-250	Rxo/Rt	50
0	MINMK	20

0.2	DEEP INDUCTION (Ohm-m)	2000
0.2	MEDIUM INDUCTION (Ohm-m)	2000

Calibration Report

Database File: 1598ddn.db  
 Dataset Pathname: pass4  
 Dataset Creation: Wed Aug 30 02:13:00 2017 by Log SOC 120430

Dual Induction Calibration Report

Serial-Model: PROBE7-DILG  
 Surface Cal Performed: Wed Aug 30 00:06:33 2017  
 Downhole Cal Performed: Mon Jul 28 12:02:56 2008  
 After Survey Verification Performed: Mon Jul 28 12:02:56 2008

Surface Calibration

Loop:	Readings			References			Results	
	Air	Loop		Air	Loop		m	b
Deep	-0.014	0.629	V	0.000	400.000	mmho/m	620.000	0.000
Medium	0.039	0.728	V	0.000	464.000	mmho/m	675.000	-44.000
Internal:	Zero	Cal		Zero	Cal		m	b
Deep	0.011	0.610	V	0.000	400.000	mmho/m	667.135	-7.256
Medium	0.005	0.712	V	0.000	464.000	mmho/m	655.677	-3.102

Downhole Calibration

	Readings			References			Results	
	Zero	Cal		Zero	Cal		m'	b'
Deep	0.000	0.000	mmho/m	14.508	388.384	mmho/m	1.000	0.000
Medium	0.000	0.000	mmho/m	166.367	504.400	mmho/m	1.000	0.000
LL3		7.500	V		1400.000	Ohm-m		
		0.000	V		20.000	Ohm-m		
		-7.200	V		4000.000	mmho-m		

After Survey Verification

	Readings			Targets			Results	
	Zero	Cal		Zero	Cal		m'	b'
Deep	0.000	0.000	mmho/m	0.000	0.000	mmho/m	0.000	0.000
Medium	0.000	0.000	mmho/m	0.000	0.000	mmho/m	0.000	0.000
LL3		1.000	Ohm-m		1.000	Ohm-m		
		0.000	Ohm-m		0.000	Ohm-m		
		1.000	mmho-m		1.000	mmho-m		

Litho Density Calibration Report

Serial: 002 Model: PRB

Master Calibration

Performed Mon Aug 21 11:27:42 2017

	Background	Magnesium	Aluminum	Sandstone	
Window 1	837.1	10632.5	2945.1	12110.1	cps
Window 2	772.0	9117.4	2570.1	10197.3	cps
Window 3	631.7	4669.0	1481.9	5042.9	cps
Window 4	187.0	187.5	185.9	189.9	cps
Long Space	0.0	8345.4	1798.1	9425.3	cps
Short Space	1.1	1927.9	1285.9	2050.2	cps
Rho		1.7100	2.5960	1.3800	g/cc

Pe	0.0000	2.5700	1.5500
Rib Angle	: 45.2	Rib Slope	: 1.008
Spine Angle	: 75.2	Spine Slope	: 3.790
		Density/Spine Ratio	: 0.558
		Spine Intercept	: -19.6

Before Survey Verification

Performed Wed Dec 31 18:00:00 1969

Window 1	0.0	0.0	0.0	0.0	cps
Window 2	0.0	0.0	0.0	0.0	cps
Window 3	0.0	0.0	0.0	0.0	cps
Window 4	0.0	0.0	0.0	0.0	cps
Long Space	0.0	0.0	0.0	0.0	cps
Short Space	0.0	0.0	0.0	0.0	cps
Measured Rho		0.0000	0.0000	0.0000	g/cc
Measured Correction		0.0000	0.0000	0.0000	g/cc
Measured Pe			0.0000	0.0000	

After Survey Verification

Performed Wed Dec 31 18:00:00 1969

Window 1	0.0	0.0	0.0	0.0	cps
Window 2	0.0	0.0	0.0	0.0	cps
Window 3	0.0	0.0	0.0	0.0	cps
Window 4	0.0	0.0	0.0	0.0	cps
Long Space	0.0	0.0	0.0	0.0	cps
Short Space	0.0	0.0	0.0	0.0	cps
Measured Rho		0.0000	0.0000	0.0000	g/cc
Measured Correction		0.0000	0.0000	0.0000	g/cc
Measured Pe			0.0000	0.0000	

Compensated Neutron Calibration Report

Serial Number: 070808  
Tool Model: Probe

PRE-SURVEY VERIFICATION

Detector	Readings	Measured	Target
Short Space	cps		
Long Space	cps	pu	pu

POST-SURVEY VERIFICATION

Detector	Readings	Measured	Target
Short Space	cps		
Long Space	cps	pu	pu

Gamma Ray Calibration Report

Serial Number: 070558  
Tool Model: OPEN\_GR  
Performed: Wed May 31 00:09:32 2017

Calibrator Value: 1.0 GAPI

Background Reading: 0.0 cps  
Calibrator Reading: 1.0 cps

Sensitivity: 0.2800 GAPI/cps