



**COMPENSATED
DENSITY / NEUTRON
PE LOG**

Company VINCENT OIL CORPORATION
 Well KEOUGH #7-34
 Field MULLBERRY CREEK
 County FORD
 State KANSAS

Company VINCENT OIL CORPORATION
 Well KEOUGH #7-34
 Field MULLBERRY CREEK
 County FORD State KANSAS

Location: API # : 15-057-20985-0000
 2582' FSL & 2409' FVL
 NE - NE - NE - SW
 Permanent Datum GROUND LEVEL Elevation 2535
 Log Measured From KELLY BUSHING 12' A.G.L.
 Drilling Measured From KELLY BUSHING
 SEC 34 TWP 28S RGE 23W
 Other Services
 DIL/MEL
 SONIIC
 Elevation
 K.B. 2547
 D.F. 2545
 G.L. 2535

Date	9/23/17	
Run Number	ONE	
Depth Driller	5370	
Depth Logger	5372	
Bottom Logged Interval	5348	
Top Log Interval	4200	
Casing Driller	8 5/8" @ 690'	
Casing Logger	690	
Bit Size	7 7/8"	
Type Fluid in Hole	CHEMICAL MUD	CHLORIDES 11,200 PPM
Density / Viscosity	9.4/85	
pH / Fluid Loss	9.0/11.2	
Source of Sample	FLOWLINE	
Rim @ Meas. Temp	.400 @ 80F	
Rmf @ Meas. Temp	.300 @ 80F	
Rmc @ Meas. Temp	.480 @ 80F	
Source of Rmf / Rmc	MEASUREMENT	
Rim @ BHT	.250 @ 128F	
Time Circulation Stopped	3 HOURS	
Time Logger on Bottom	7:15 P.M.	
Maximum Recorded Temperature	128F	
Equipment Number	922339	
Location	HAYS, KANSAS	
Recorded By	JEFF LUEBBERS	
Witnessed By	TOM DUDGEON	

<<< Fold Here >>>

All interpretations are opinions based on inferences from electrical or other measurements and we cannot and do not guarantee the accuracy or correctness of any interpretation, and we shall not, except in the case of gross or willful negligence on our part, be liable or responsible for any loss, costs, damages, or expenses incurred or sustained by anyone resulting from any interpretation made by any of our officers, agents or employees. These interpretations are also subject to our general terms and conditions set out in our current Price Schedule.

Comments

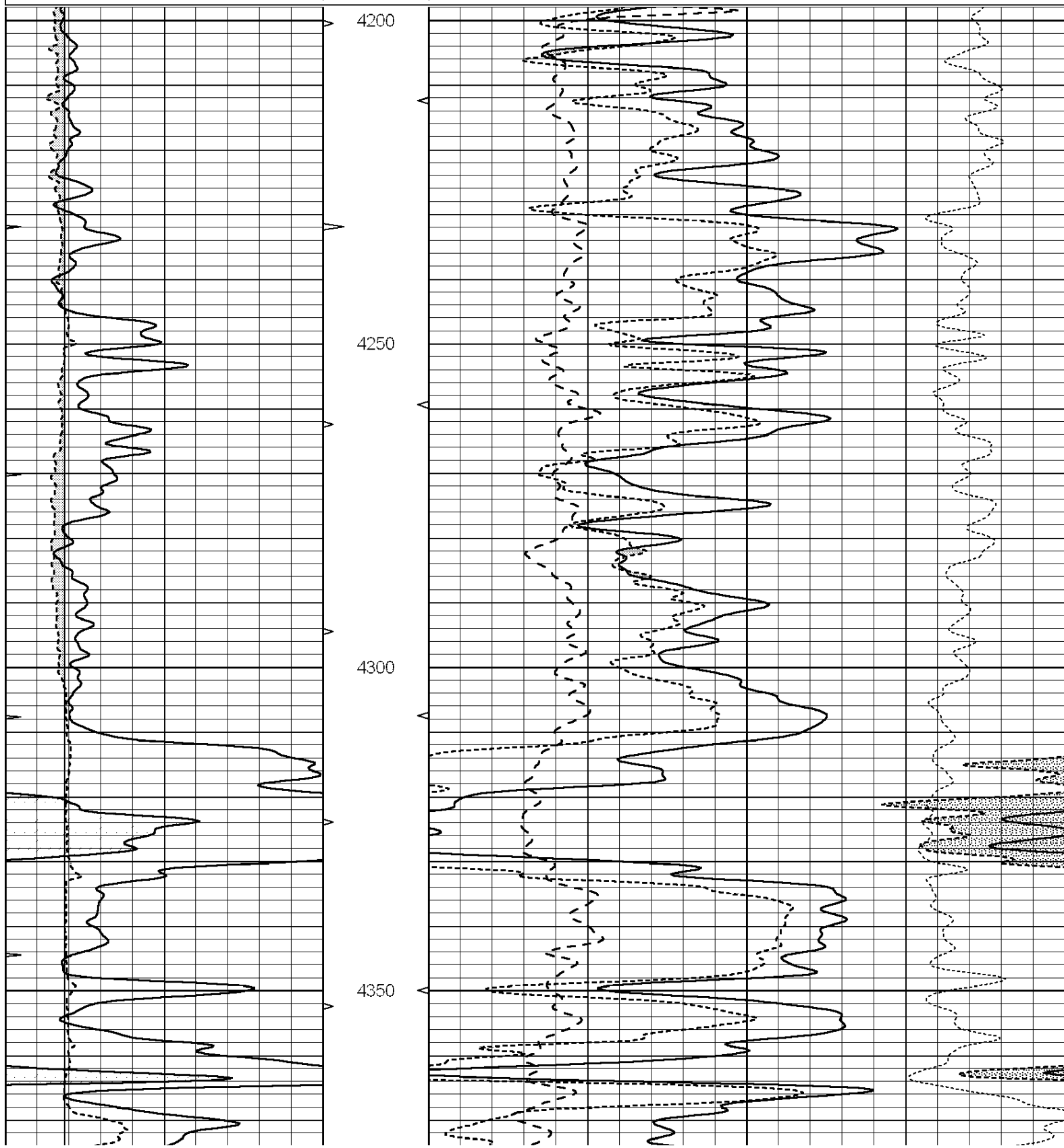
THANK YOU FOR USING ELI WIRELINE HAYS, KANSAS (785) 628-6395
 DIRECTIONS
 KINGSDOWN, KS. & HWY 54, 2N. ON "RD. 125" TO "WILBURN RD.", 4W., N. INTO ACROSS FROM HOUSE

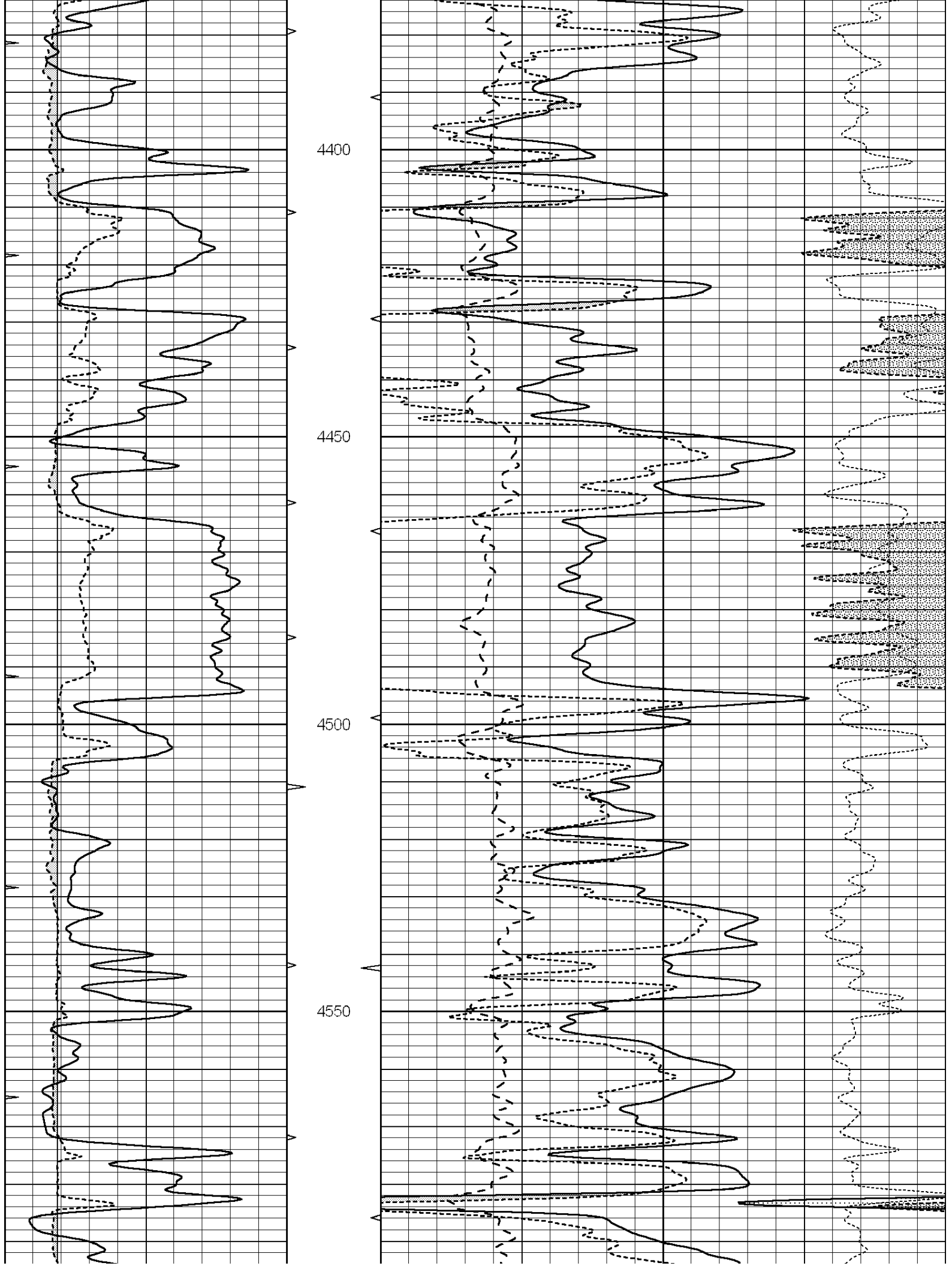


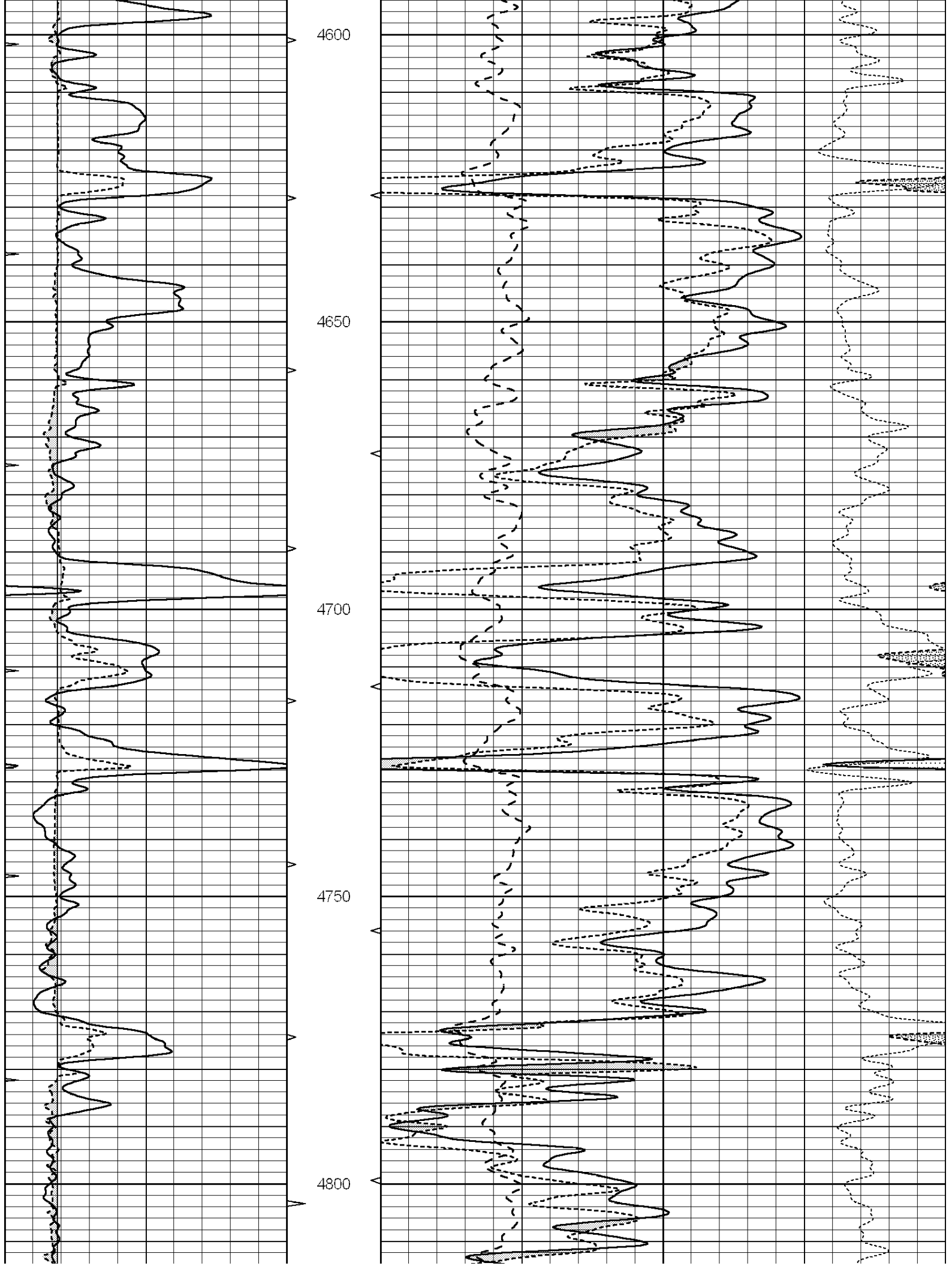
MAIN SECTION

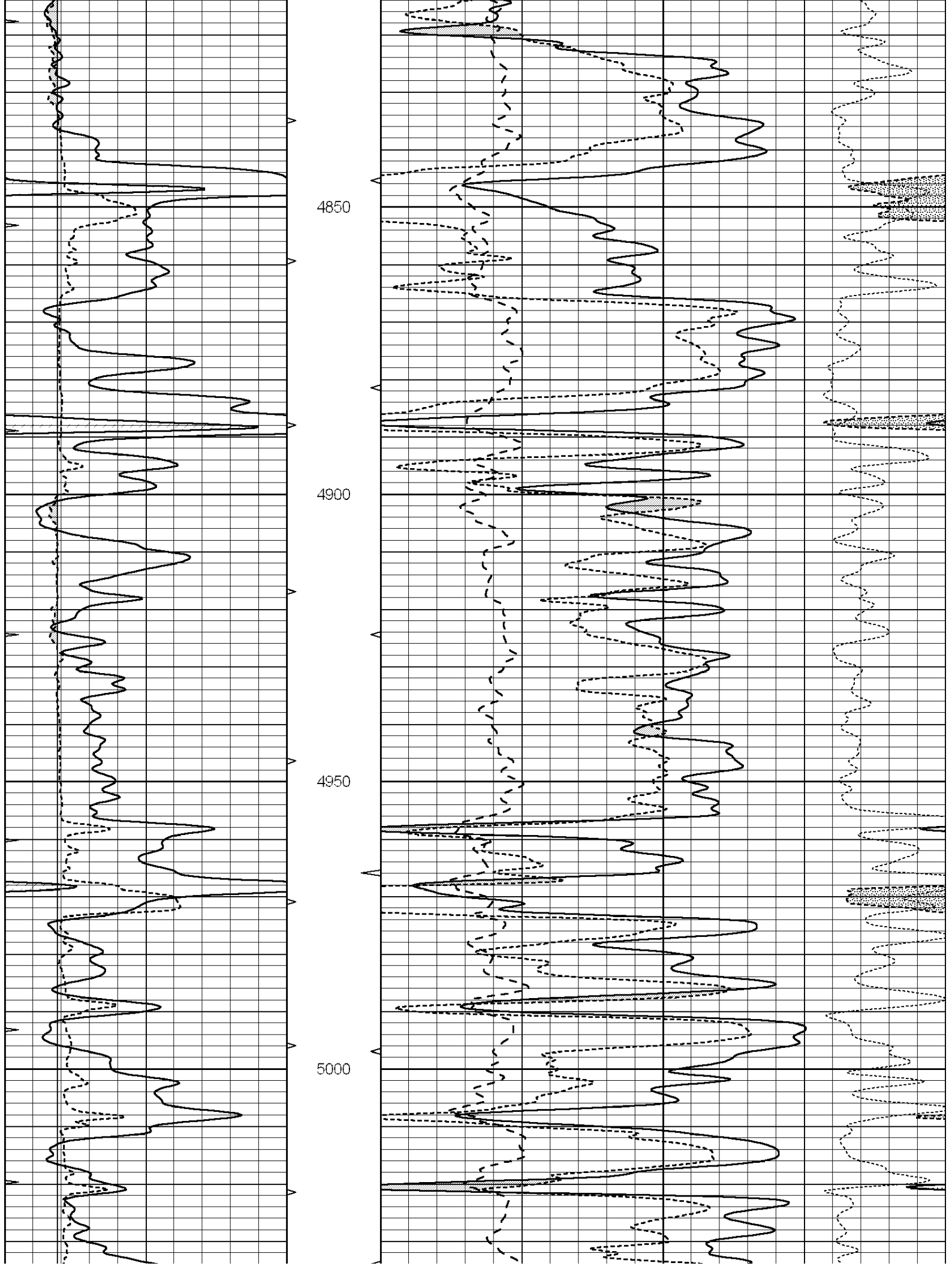
Database File: 1830pe.db
 Dataset Pathname: pass3.6
 Presentation Format: ldt_neu
 Dataset Creation: Sat Sep 23 20:52:05 2017
 Charted by: Depth in Feet scaled 1:240

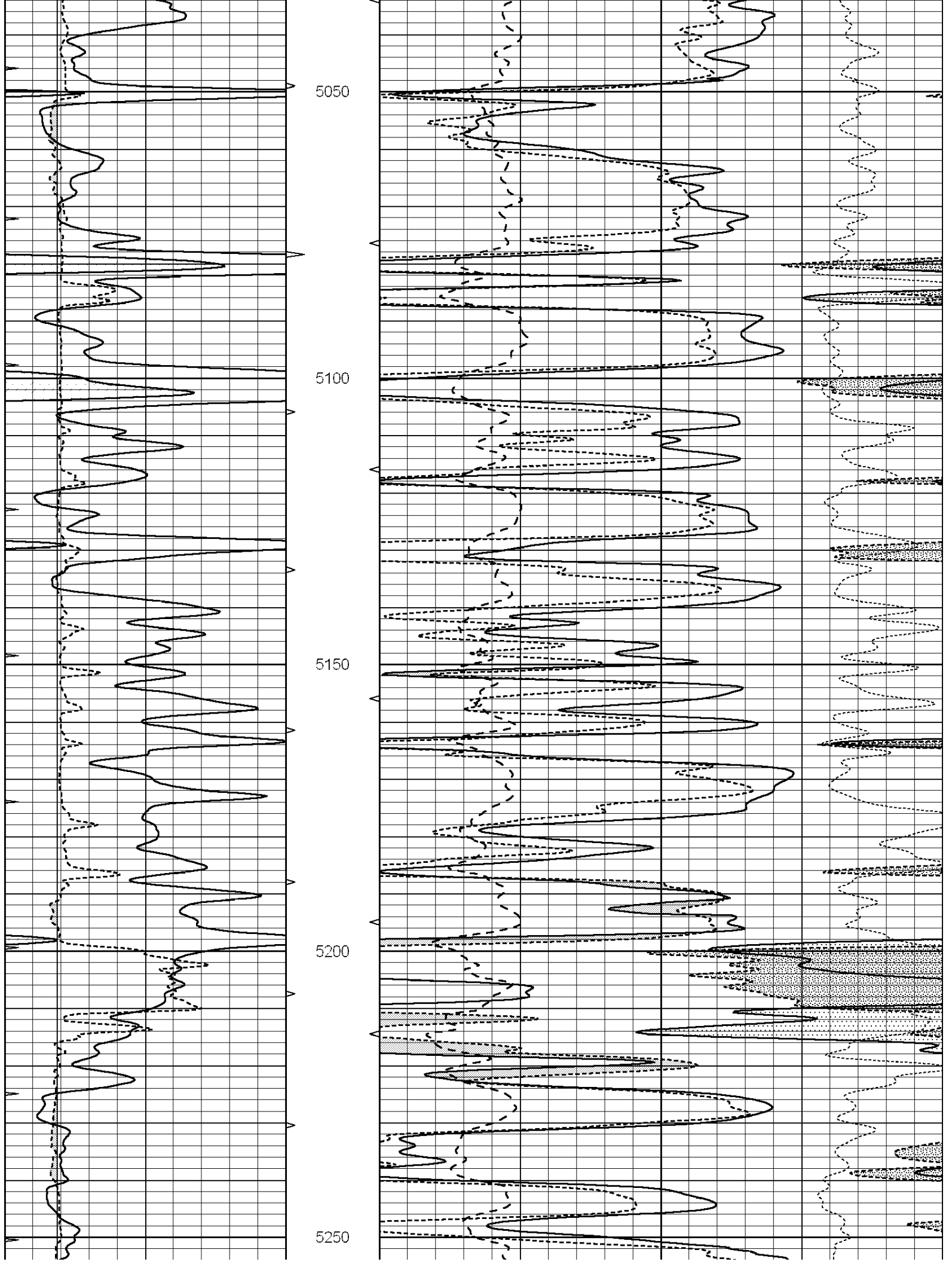
0	GAMMA RAY (GAPI)	150	ABHV	30	COMPENSATED DENSITY (pu)		-10
6	CALIPER (in)	16	10 (ft3)	0	COMPENSATED NEUTRON (pu)		-10
0	MINMK	20	TBHV	0	PE	10	-0.25 CORRECTION (g/cc) 0.25
			0 (ft3)	10			

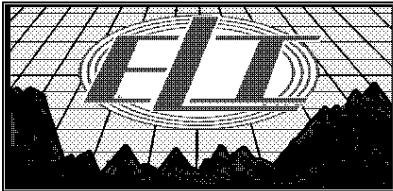
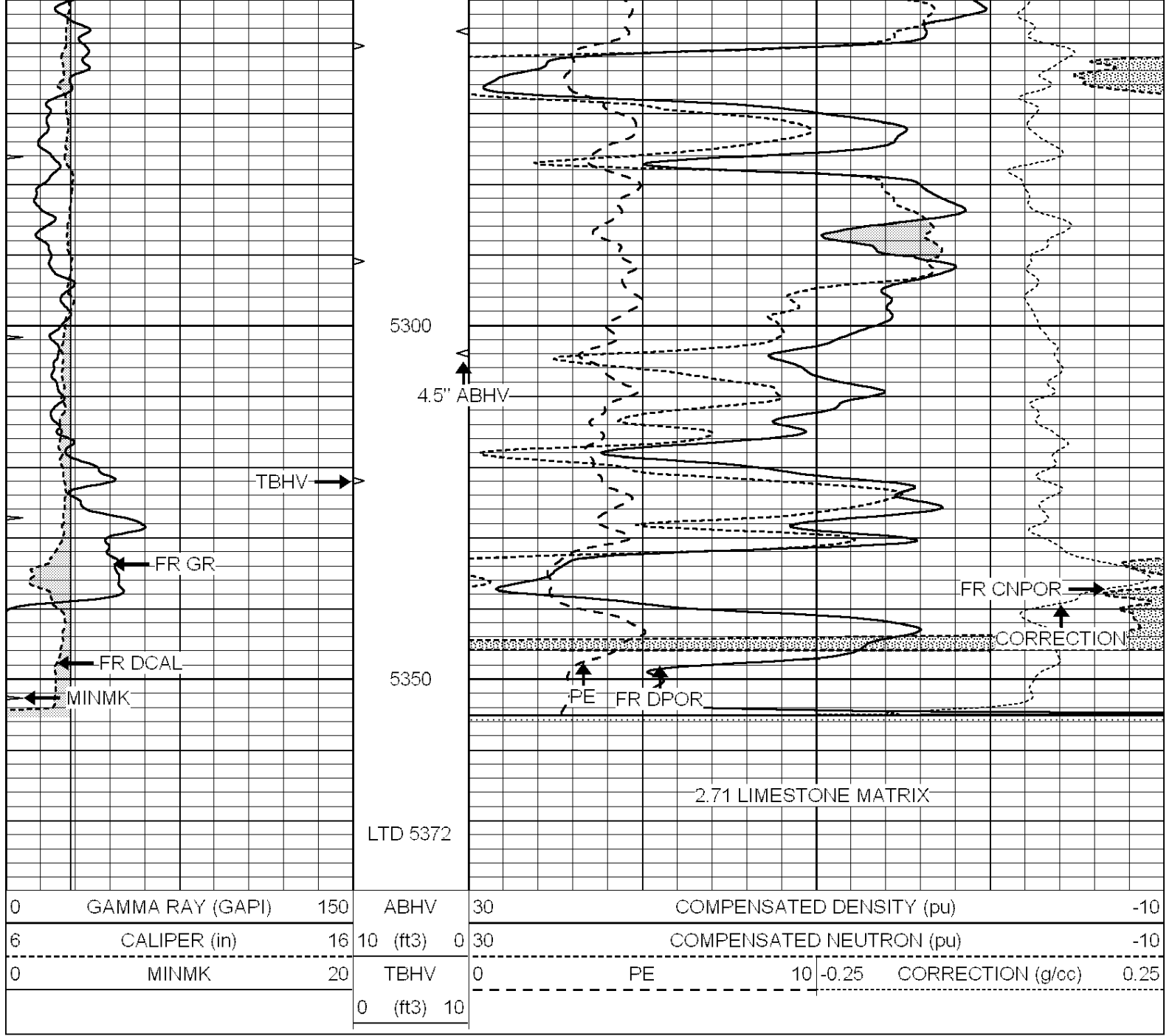










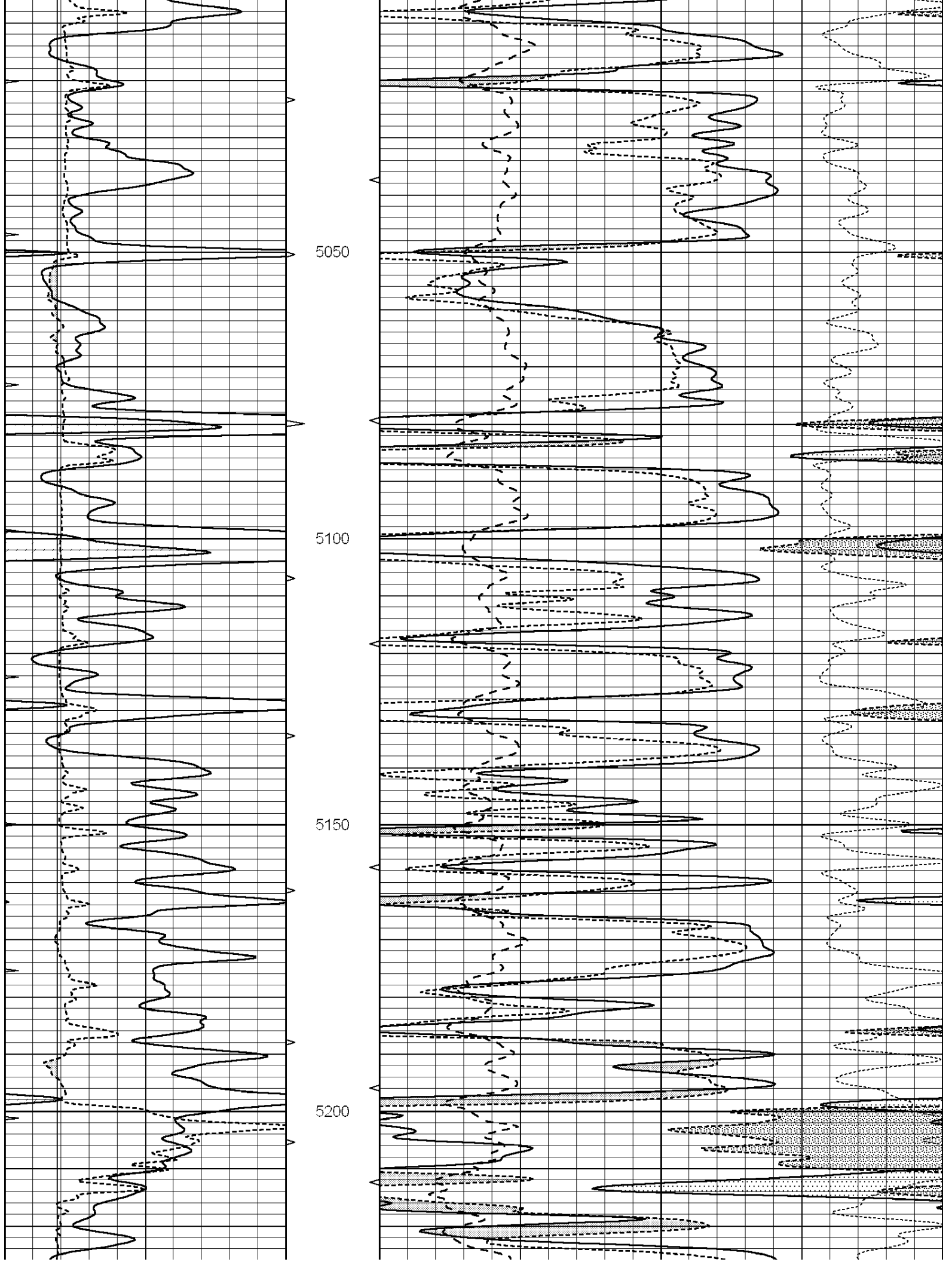


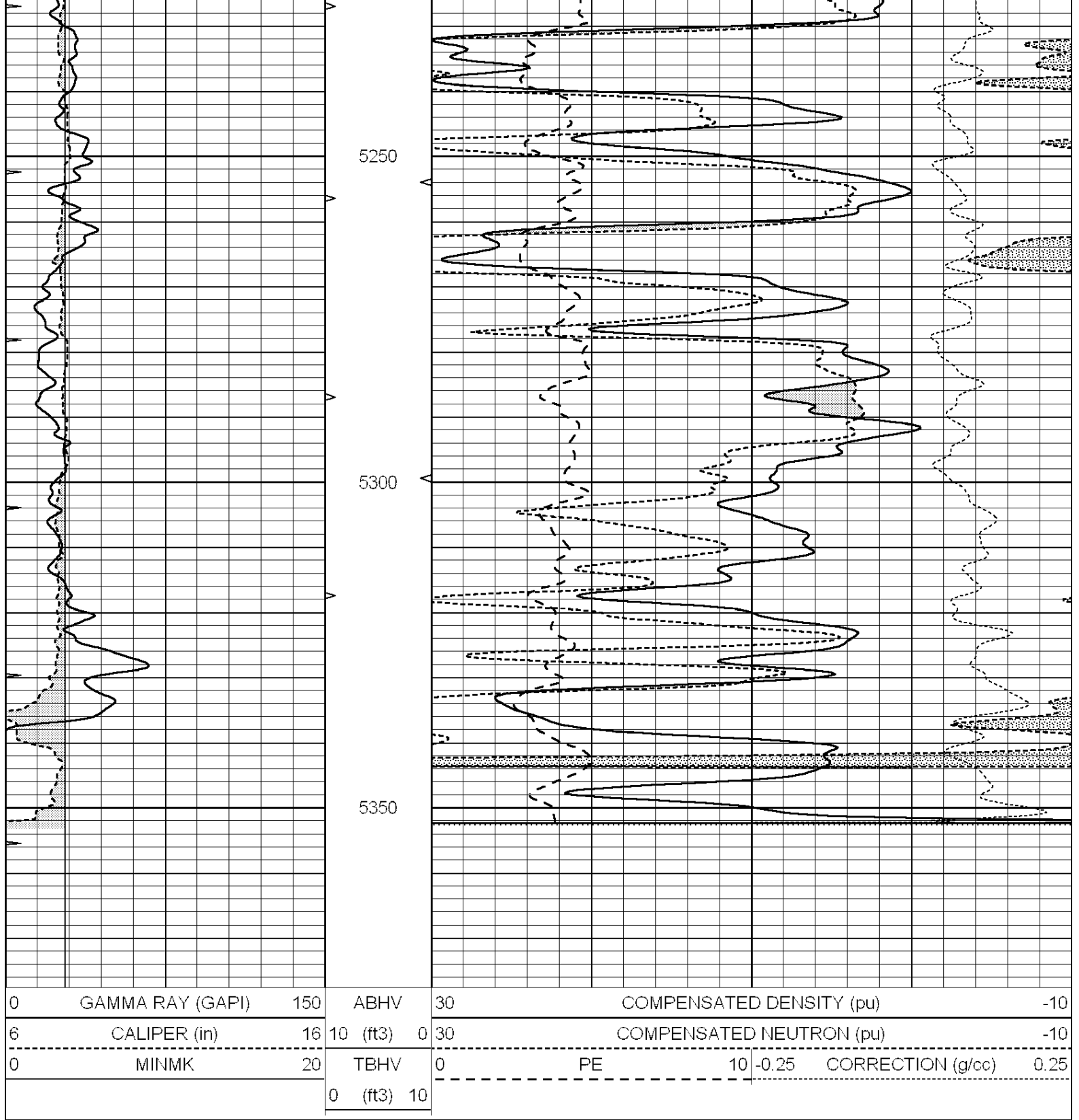
REPEAT SECTION

Database File: 1830pe.db
 Dataset Pathname: pass2.5
 Presentation Format: ldt_neu
 Dataset Creation: Sat Sep 23 19:43:41 2017
 Charted by: Depth in Feet scaled 1:240

0	GAMMA RAY (GAPI)	150	ABHV	30	COMPENSATED DENSITY (pu)	-10
6	CALIPER (in)	16	10 (ft3)	0	COMPENSATED NEUTRON (pu)	-10
0	MINMK	20	TBHV	0	PE	10 -0.25
			0 (ft3)	10	CORRECTION (g/cc)	0.25







Calibration Report

Database File: 1598ddn.db
 Dataset Pathname: pass4
 Dataset Creation: Wed Aug 30 02:13:00 2017 by Log SOC 120430

Dual Induction Calibration Report

Serial-Model: PROBE7-DILG
 Surface Cal Performed: Wed Aug 30 00:06:33 2017
 Downhole Cal Performed: Mon Jul 28 12:02:56 2008
 After Survey Verification Performed: Mon Jul 28 12:02:56 2008

Readings				References			Results	
Loop:	Air	Loop		Air	Loop		m	b
Deep	-0.014	0.629	V	0.000	400.000	mmho/m	620.000	0.000
Medium	0.039	0.728	V	0.000	464.000	mmho/m	675.000	-44.000
Internal:	Zero	Cal		Zero	Cal		m	b
Deep	0.011	0.610	V	0.000	400.000	mmho/m	667.135	-7.256
Medium	0.005	0.712	V	0.000	464.000	mmho/m	655.677	-3.102

Downhole Calibration								
Readings				References			Results	
	Zero	Cal		Zero	Cal		m'	b'
Deep	0.000	0.000	mmho/m	14.508	388.384	mmho/m	1.000	0.000
Medium	0.000	0.000	mmho/m	166.367	504.400	mmho/m	1.000	0.000
LL3		7.500	V		1400.000	Ohm-m		
		0.000	V		20.000	Ohm-m		
		-7.200	V		4000.000	mmho-m		

After Survey Verification								
Readings				Targets			Results	
	Zero	Cal		Zero	Cal		m'	b'
Deep	0.000	0.000	mmho/m	0.000	0.000	mmho/m	0.000	0.000
Medium	0.000	0.000	mmho/m	0.000	0.000	mmho/m	0.000	0.000
LL3		1.000	Ohm-m		1.000	Ohm-m		
		0.000	Ohm-m		0.000	Ohm-m		
		1.000	mmho-m		1.000	mmho-m		

Litho Density Calibration Report
Serial: 002 Model: PRB

Master Calibration		Performed Mon Aug 21 11:27:42 2017				
	Background	Magnesium	Aluminum	Sandstone		
Window 1	837.1	10632.5	2945.1	12110.1		cps
Window 2	772.0	9117.4	2570.1	10197.3		cps
Window 3	631.7	4669.0	1481.9	5042.9		cps
Window 4	187.0	187.5	185.9	189.9		cps
Long Space	0.0	8345.4	1798.1	9425.3		cps
Short Space	1.1	1927.9	1285.9	2050.2		cps
Rho		1.7100	2.5960	1.3800		g/cc
Pe		0.0000	2.5700	1.5500		
Rib Angle	: 45.2	Rib Slope	: 1.008	Density/Spine Ratio		: 0.558
Spine Angle	: 75.2	Spine Slope	: 3.790	Spine Intercept		: -19.6

Before Survey Verification		Performed Wed Dec 31 18:00:00 1969				
Window 1	0.0	0.0	0.0	0.0		cps
Window 2	0.0	0.0	0.0	0.0		cps
Window 3	0.0	0.0	0.0	0.0		cps
Window 4	0.0	0.0	0.0	0.0		cps
Long Space	0.0	0.0	0.0	0.0		cps
Short Space	0.0	0.0	0.0	0.0		cps
Measured Rho		0.0000	0.0000	0.0000		g/cc
Measured Correction		0.0000	0.0000	0.0000		g/cc
Measured Pe			0.0000	0.0000		

After Survey Verification Performed Wed Dec 31 18:00:00 1969

Window 1	0.0	0.0	0.0	0.0	cps
Window 2	0.0	0.0	0.0	0.0	cps
Window 3	0.0	0.0	0.0	0.0	cps
Window 4	0.0	0.0	0.0	0.0	cps
Long Space	0.0	0.0	0.0	0.0	cps
Short Space	0.0	0.0	0.0	0.0	cps
Measured Rho		0.0000	0.0000	0.0000	g/cc
Measured Correction		0.0000	0.0000	0.0000	g/cc
Measured Pe			0.0000	0.0000	

Compensated Neutron Calibration Report

Serial Number: 070808
 Tool Model: Probe

PRE-SURVEY VERIFICATION

Detector	Readings	Measured	Target
Short Space	cps		
Long Space	cps	pu	pu

POST-SURVEY VERIFICATION

Detector	Readings	Measured	Target
Short Space	cps		
Long Space	cps	pu	pu

Gamma Ray Calibration Report

Serial Number: 070558
 Tool Model: OPEN_GR
 Performed: Wed May 31 00:09:32 2017

Calibrator Value: 1.0 GAPI

Background Reading: 0.0 cps
 Calibrator Reading: 1.0 cps

Sensitivity: 0.2800 GAPI/cps