



MICRO LOG

Company MULL DRILLING CO.
 Well BOUZIDEN #1-10
 Field WILDCAT
 County CLARK State KANSAS

Location: API # : 15-025-21596-00-00
 595' FNL & 2350' FEL
 SEC 10 TWP 32S RGE 23W
 Permanent Datum GROUND LEVEL Elevation 2216'
 Log Measured From KELLY BUSHING 11' A.G.L.
 Drilling Measured From KELLY BUSHING
 Other Services CDL/CNL/DIL SONIC
 Elevation K.B. 2227'
 D.F. 2225'
 G.L. 2216'

Date	09/17/17
Run Number	TWO
Depth Driller	5415
Depth Logger	5417
Bottom Logged Interval	5397
Top Log Interval	4300
Casing Driller	8 5/8" @ 810
Casing Logger	610
Bit Size	7 7/8"
Type Fluid in Hole	CHEMICAL MUD
Density / Viscosity	9.17/2
pH / Fluid Loss	9.5/13.2
Source of Sample	FLOWLINE
Rm @ Meas. Temp	.50@64
Rmt @ Meas. Temp	.38@64
Rmc @ Meas. Temp	.60@64
Source of Rmf / Rmc	MEASURED
Rm @ BHT	24@129
Time Circulation Stopped	2 HOURS
Time Logger on Bottom	///
Maximum Recorded Temperature	129F
Equipment Number	4010
Location	HAYS, KANSAS
Recorded By	GUS PFANENSTIEL
Witnessed By	RUSTY MOURNING

<<< Fold Here >>>

All interpretations are opinions based on inferences from electrical or other measurements and we cannot and do not guarantee the accuracy or correctness of any interpretation, and we shall not, except in the case of gross or willful negligence on our part, be liable or responsible for any loss, costs, damages, or expenses incurred or sustained by anyone resulting from any interpretation made by any of our officers, agents or employees. These interpretations are also subject to our general terms and conditions set out in our current Price Schedule.

Comments

THANK YOU FOR USING ELI WIRELINE, HAYS, KS. (785) 628-6395

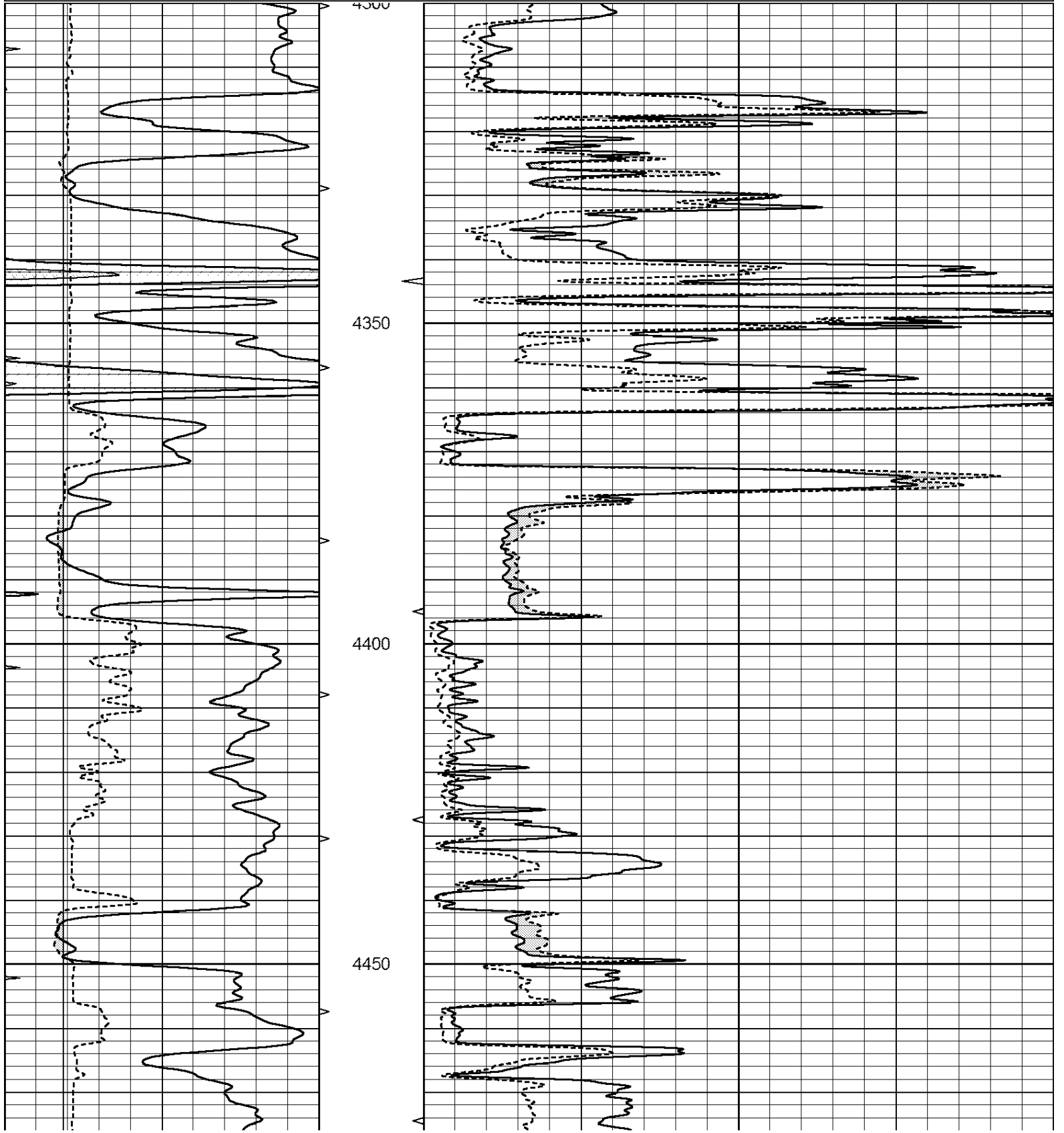
DIRECTIONS
 ASHLAND WEST 1 MILE,
 6 NORTH, WEST INTO.

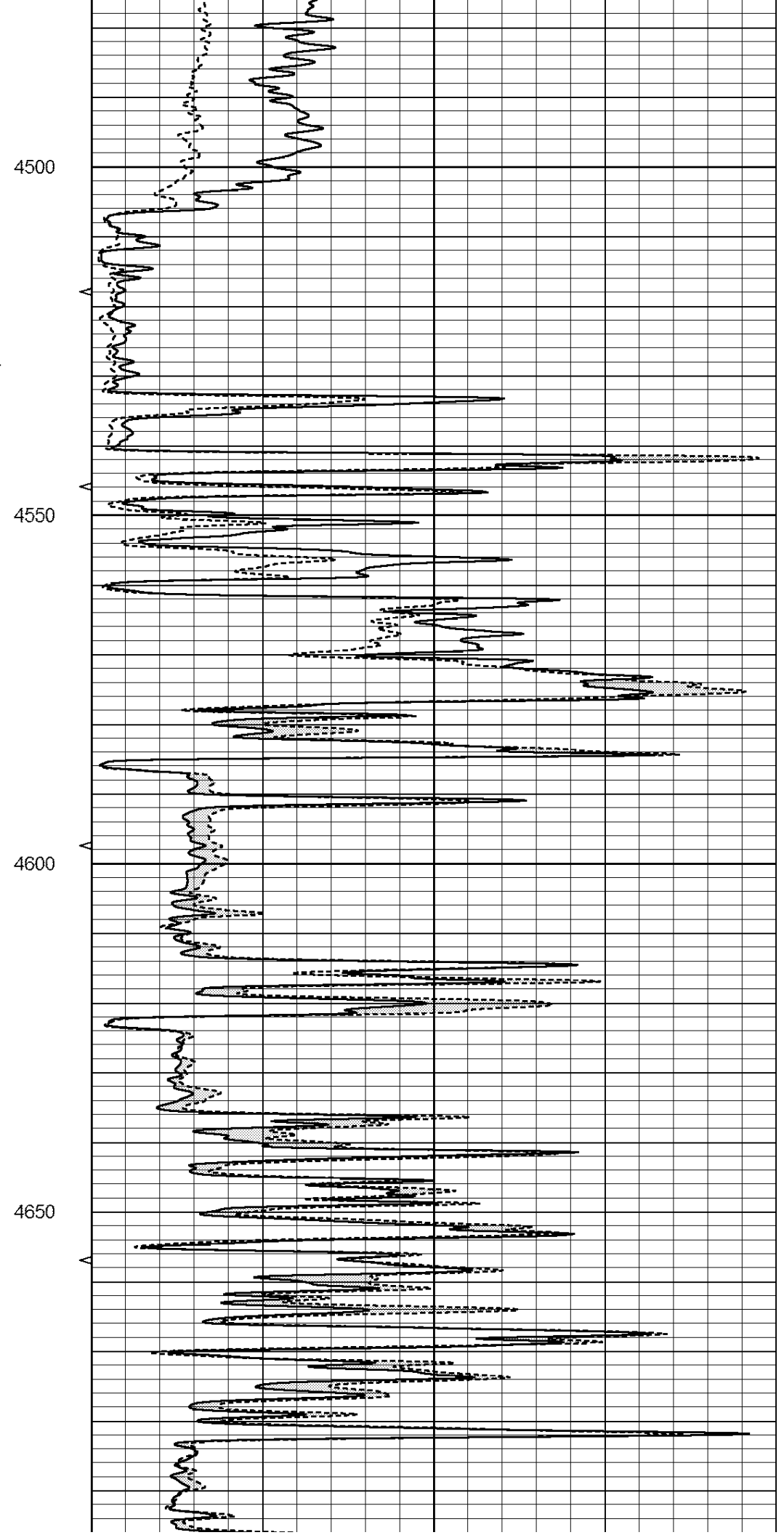
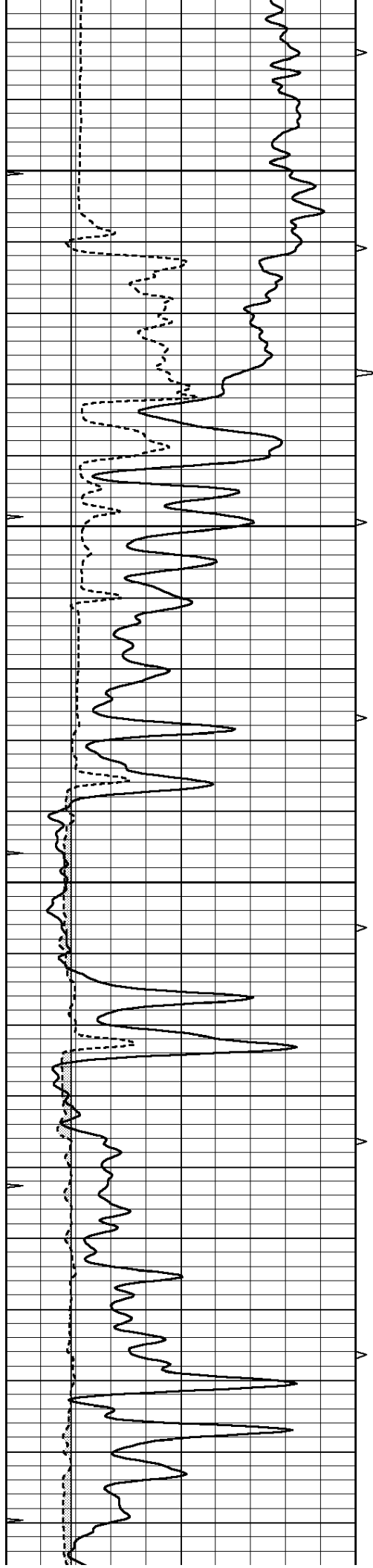


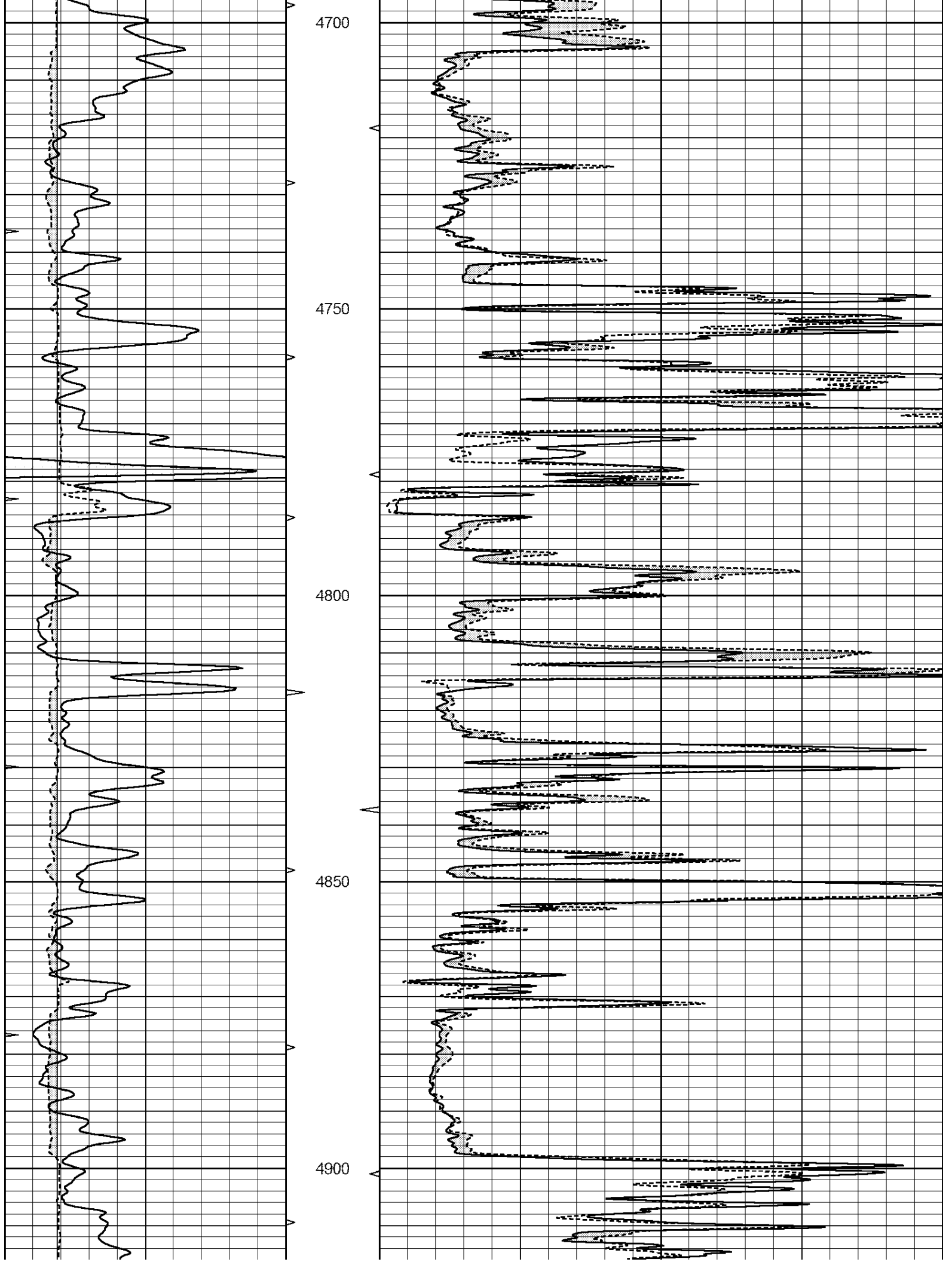
MAIN PASS

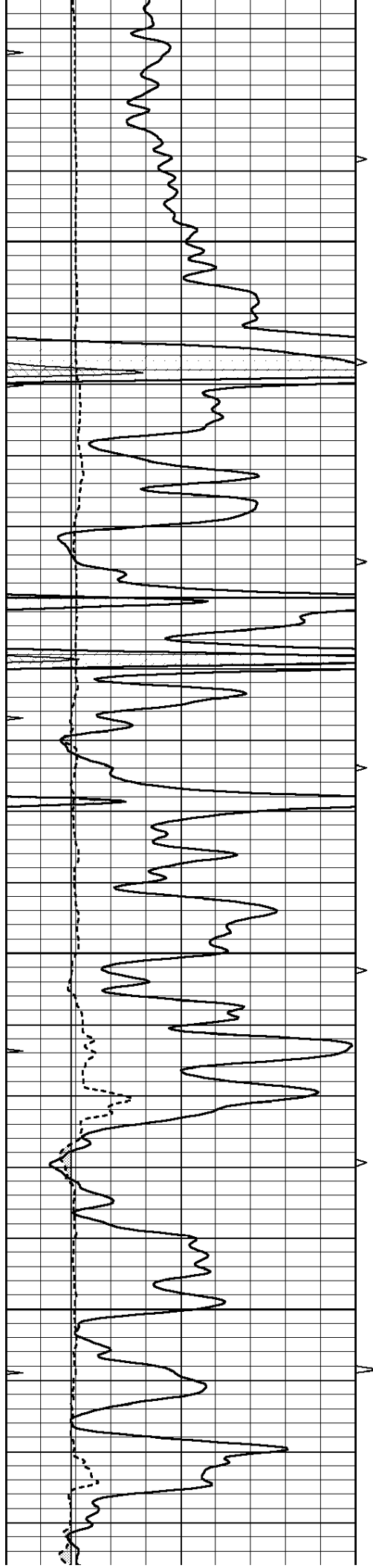
Database File: 1822pe.db
 Dataset Pathname: pass5MIC
 Presentation Format: _micro
 Dataset Creation: Sun Sep 17 13:04:57 2017 by Calc Open-Cased 090629
 Charted by: Depth in Feet scaled 1:240

0	GAMMA RAY (GAPI)	150	ABHV	0	MEL1.5 (Ohm-m)	40
6	CALIPER (in)	16	10 (ft3)	0	MEL2.0 (Ohm-m)	40
0	MINMK	20	TBHV			
			0 (ft3)	10		







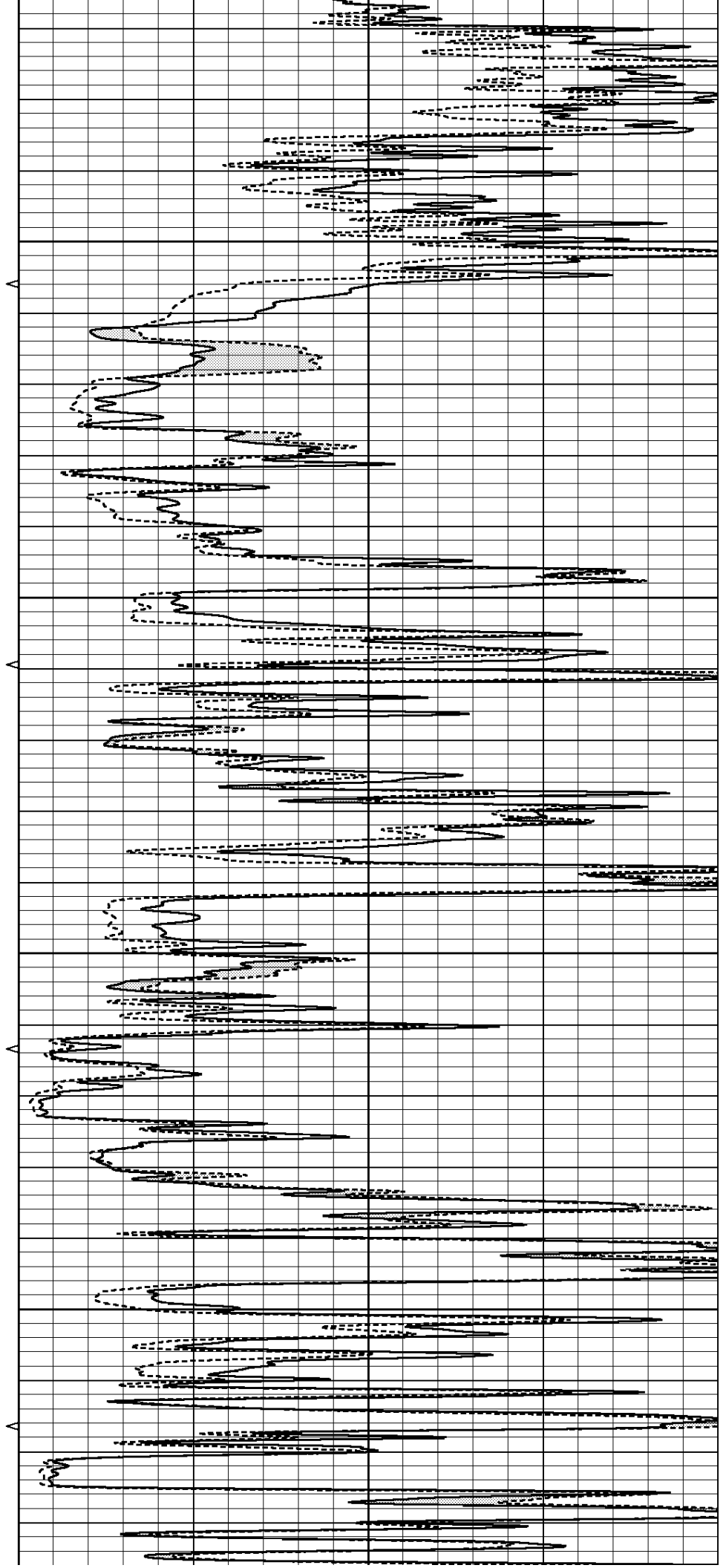


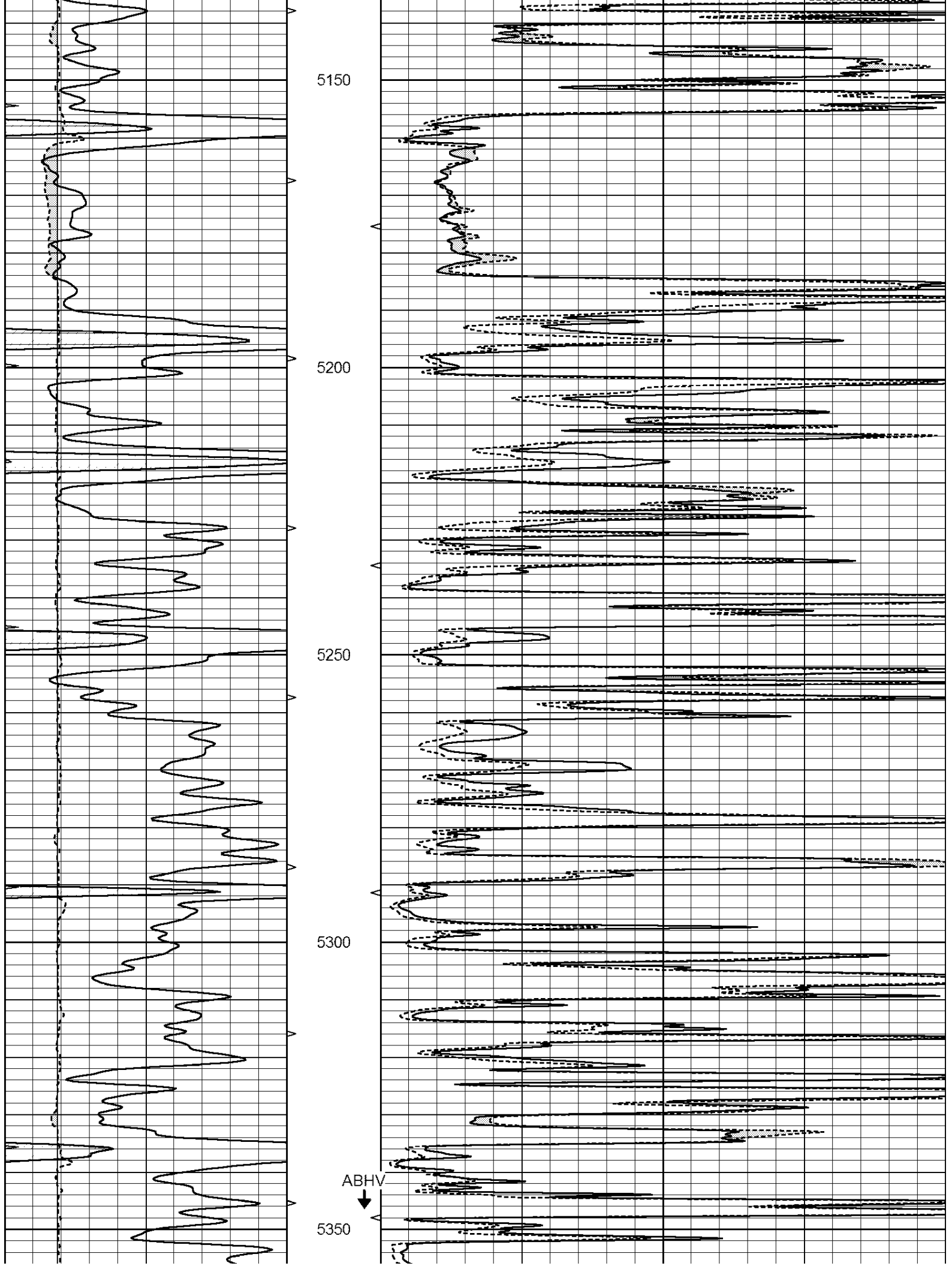
4950

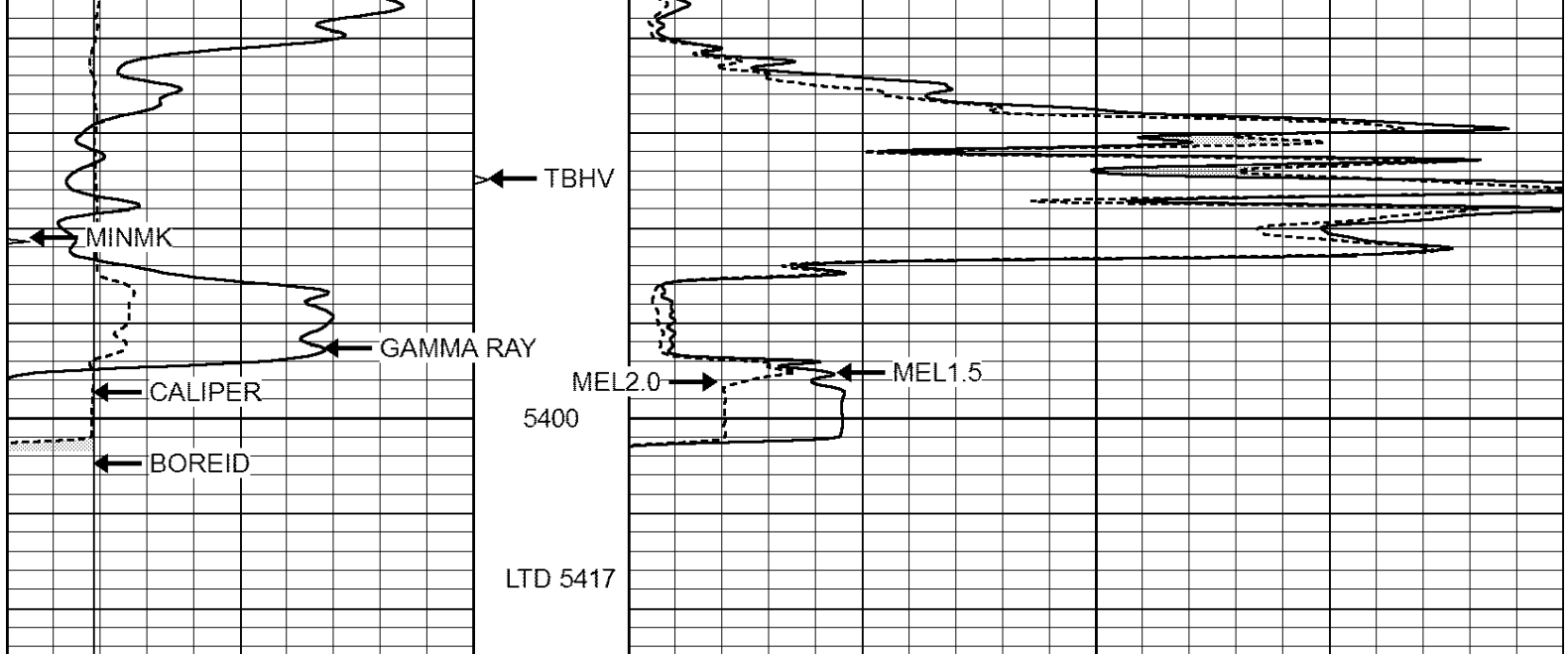
5000

5050

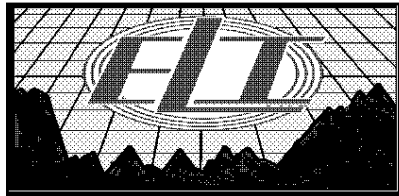
5100







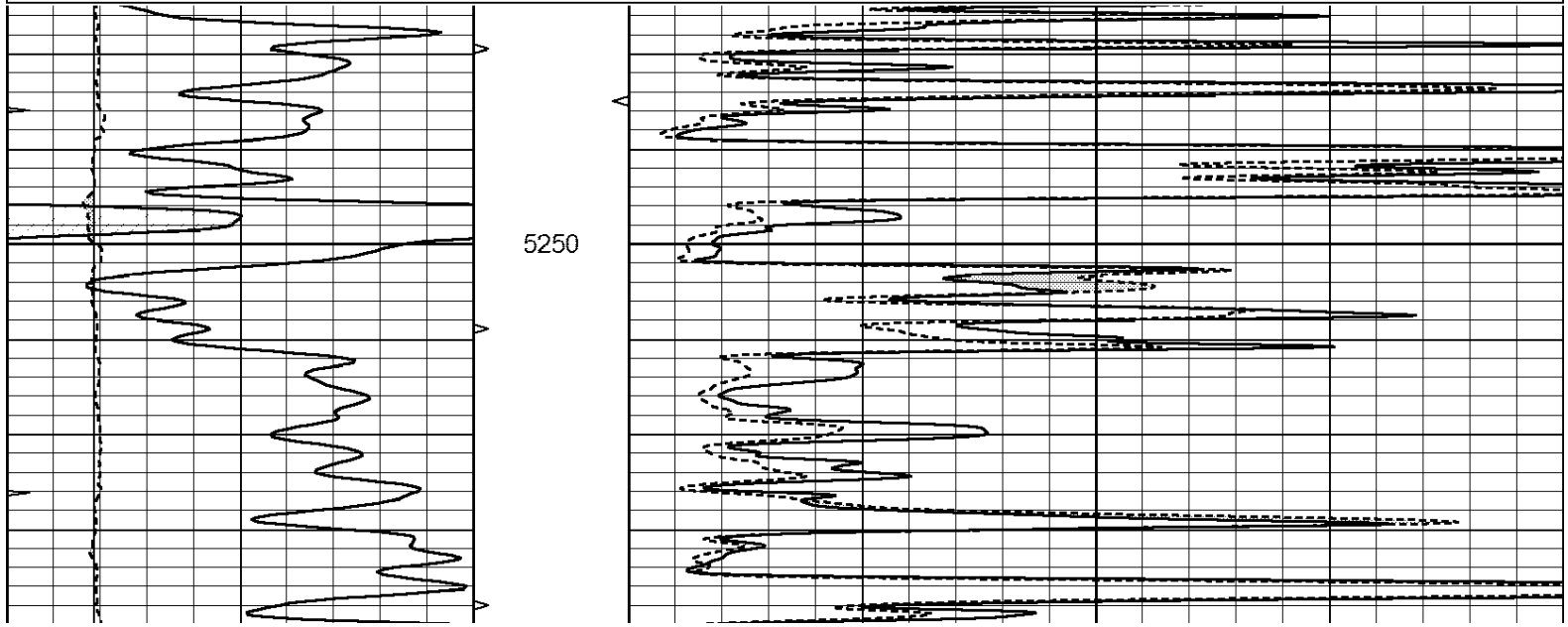
0	GAMMA RAY (GAPI)	150	ABHV	0	MEL1.5 (Ohm-m)	40
6	CALIPER (in)	16	10 (ft3)	0	MEL2.0 (Ohm-m)	40
0	MINMK	20	TBHV			
			0 (ft3)	10		

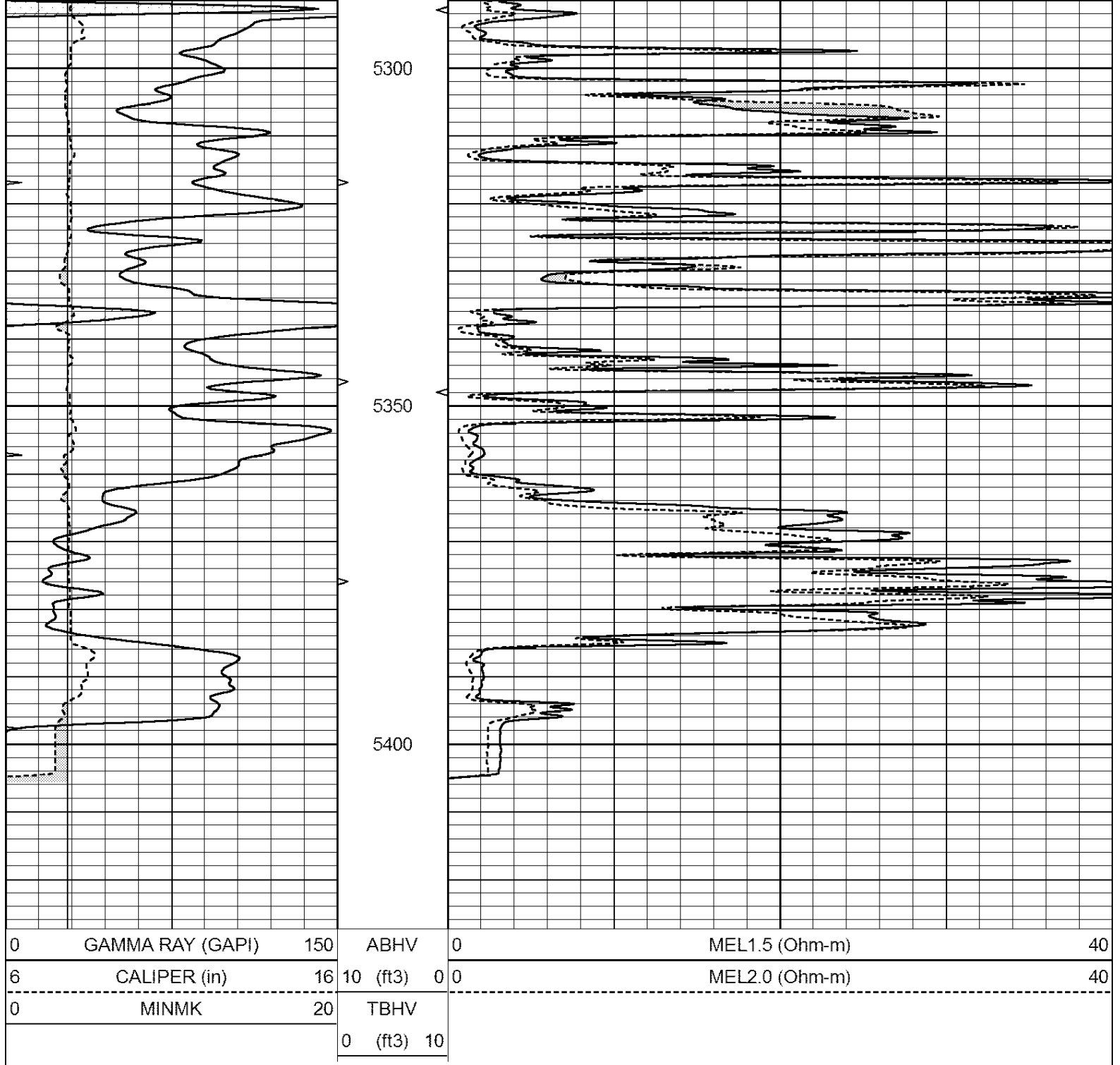


REPEAT SECTION

Database File: 1822pe.db
 Dataset Pathname: pass4RP
 Presentation Format: _micro
 Dataset Creation: Sun Sep 17 12:49:09 2017 by Calc Open-Cased 090629
 Charted by: Depth in Feet scaled 1:240

0	GAMMA RAY (GAPI)	150	ABHV	0	MEL1.5 (Ohm-m)	40
6	CALIPER (in)	16	10 (ft3)	0	MEL2.0 (Ohm-m)	40
0	MINMK	20	TBHV			
			0 (ft3)	10		





Calibration Report

Database File: 1822pe.db
 Dataset Pathname: pass5MIC
 Dataset Creation: Sun Sep 17 13:04:57 2017 by Calc Open-Cased 090629

MICRO Calibration Report

Serial Number: MICRO6
 Tool Model: PROBE
 Performed: Wed Aug 16 17:13:39 2017

Caliper Calibration: Gain=3.960 Offset=4.551

	Low Cal	High Cal
References	7.000	14.000
Readings	0.555	2.323

4.5" Calibration: Gain=11.075 Offset=0.400

1.5 Calibration:

Gain=44.075

Offset=-0.400

References
Readings

Low Cal
0.000
0.004

High Cal
20.000
1.196

2" Calibration:

Gain=46.000

Offset=-1.000

References
Readings

Low Cal
0.000
0.006

High Cal
20.000
0.913

Gamma Ray Calibration Report

Serial Number:
Tool Model:
Performed:

GR2
OPEN
Wed Aug 16 17:13:40 2017

Calibrator Value:

1.0

GAPI

Background Reading:
Calibrator Reading:

0.0
1.0

cps
cps

Sensitivity:

0.3800

GAPI/cps