



866-463-5600 ★ Many, LA
www.toledomudlogging.com

5 INCHES PER 100 FT

P. O. Box 1209
 MANY LA, 71449
 (318)-590-9755
 FAX (318)590-9754

COMPANY: DESTINY PETROLUEM
 WELL: LINDA 3504SWD 1-5
 FIELD: CALDWELL COUNTY: SUMMER STATE: KANSAS
 LOCATION: SEC-5-35S-4W

Interval Logged: 2500' To: 5900' G.L.: _____ K.B: _____
 Date Logged: 9/27/2017 To: 10/7/2017 Spud Date: 9/25/2017
 Rig: WW DRILLING RIG 14 Unit No.: 148
 Loggers: D.MITCHELL/ G .FOLTZ
 Api No.: 15-191-22794-01-00
 Filename: linda_3504_swd_1-5.mlw
 Geologist: REID McCARTHY

Created By MainLog

Abbreviations:

NB...New Bit	DST...Drill Stem Test
CO...Circ Out	DS...Directional Survey
NR...No Returns	CG...Connection gas
TG...Trip Gas	LAT...Logged After Trip
WOB...Wt on Bit	PP...Pump Pressure
RPM...Rev/Min	SPM...Strokes/Min
SG...Survey Gas	DTG...Down Time Gas

Mud Data

WT..Weight	V..Viscosity
PH..Acidity	F..Filtrate
CHL...Chlorides	SC..Solids Content

Lithology Symbols:

Anhydrite	Salt	Granite
Siltstone	Chert	Sandstone
Dolomite	Conglomerate	Limestone
Coal	Shale	Bentonite
Carb Shale	Granite Wash	Quartz Wash
Red Sh	Org Sh	Green Sh
Cust Sh1	Cust Sh2	Cust Sh3
Cust Sh4	Cust Sh5	Cust Sh6

Accessories

Glauconite	Pyrite	Fossils	Oolites
Fractures	Cement		

Gas Chromatograph Analysis:

TG	_____
C1	_____
C2	_____
C3	_____
IC4	_____
NC4	_____
IC5	_____
NC5	_____

Drilling Rate FT/HR	Vis Por Tr / p f g	Lithology	% Oil Flu Tr / p f g	Cut Tr / pfg	Descriptions/Remarks	Total Gas/Chromatograph
------------------------	--------------------------	-----------	----------------------------	--------------------	----------------------	-------------------------



Toledo Mud Logging On
 Location 9/27/2017 To move
 Mudlogging Unit to New
 Location & To Rig up 2 man
 operation
 Set 9.625 Casing @ 315'
 Drilling 8.75: Open Hole W/
 Halliburton MM750 PDC Bit
 W/ 7x16 Jets
 TFA 1.035

9/30/17

MD 2500'
 TVD 2498.76'
 INC 1.30°
 AZM 219.80°
 VS 0.00'
 DLS 0.00°

SH:gry, lt gry, occ blk, sft frm
 blkcy-sbbckcy plty rthy txt
 sli calc LS:off wht rd gry mottl
 fn grn xln sm argl

Drilling Well W/ Fresh Water

OBG:175u

MD 2500'
 TVD 2498.76'
 Inc 1.3°
 AZM 219.8°

50

CG=34u

2600

SH:gry, lt gry, occ blk, sft frm
 blkcy-sbbckcy plty rthy txt
 sli calc LS:off wht rd gry mottl
 fn grn xln sm argl

MW= 9.1 VIS: 33

300 150 100 50

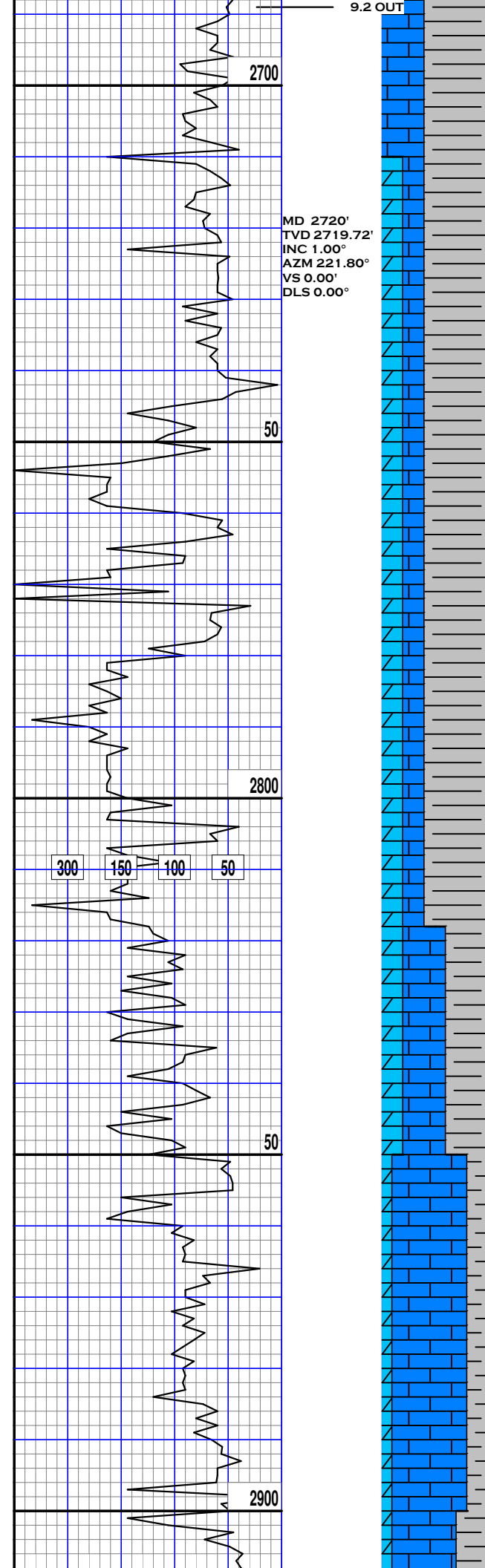
25 50 75 100 125 150 175

WOB= 52
 RPM= 67
 SPM= 148
 PP= 1434

CG=36u

50

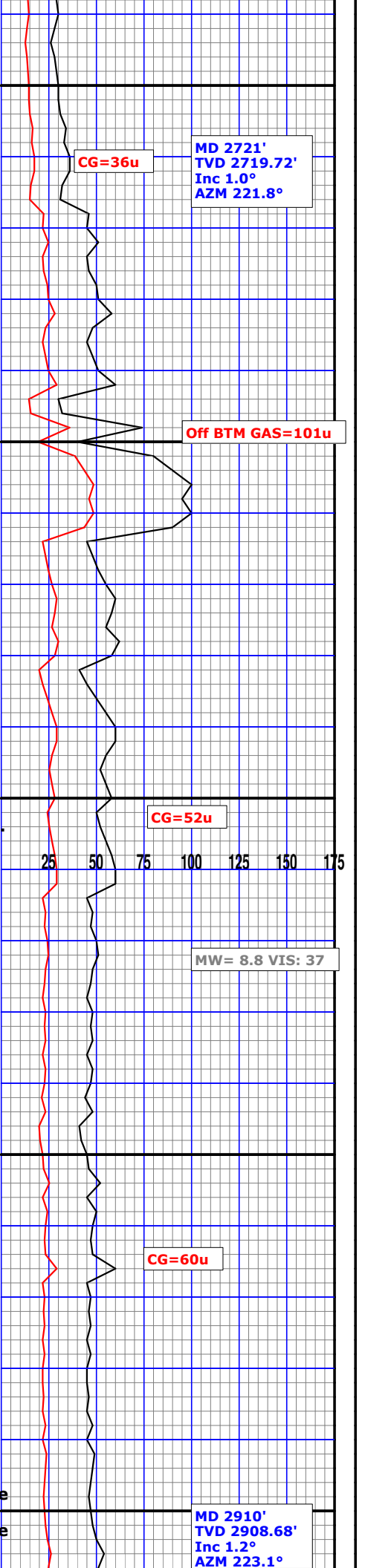
CG=38u



LS:off wht wht lt gry tan
mottl fn grn xln sm argl dense
SH:gry blk occ blk frm- hrd s
plty blkly flky ip occ chnky rthy
txt

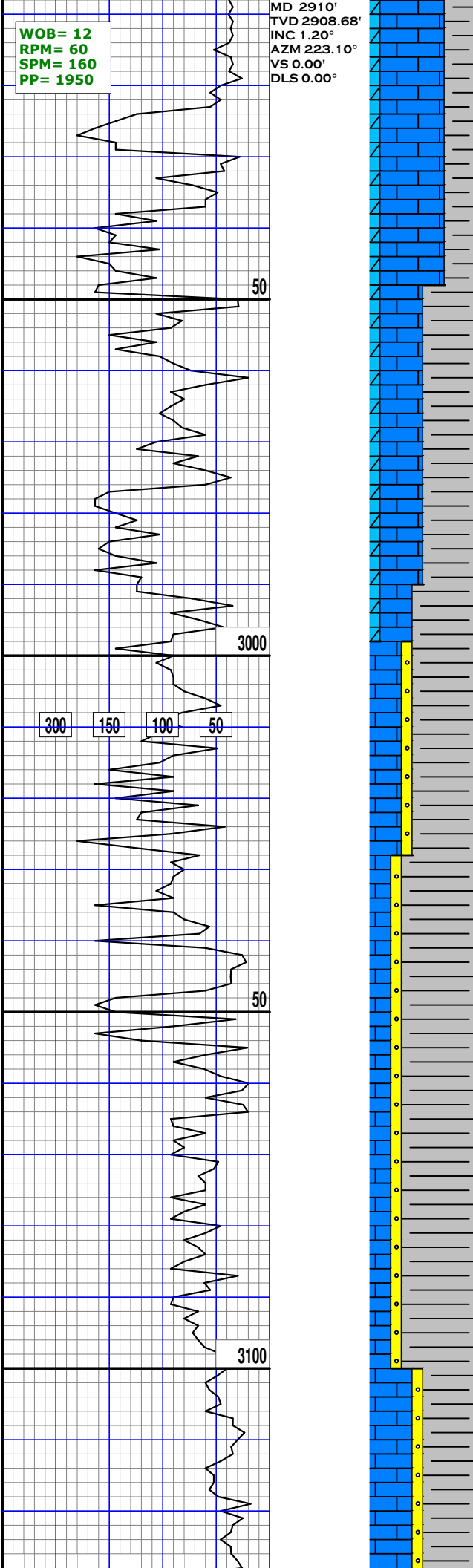
SH:gry blk occ blk frm- hrd
plty blkly flky ip occ chnky rthy
txt, v calc,gummy
LS:off wht wht lt gry tan,red i.p.
mottl fn grn xln sm argl dense
Dol:off wht wht lt gry tan,red i.p.
mottl fn grn xln sm argl dense

LS:off wht wht lt gry tan,red
i.p.mottl fn grn xln sm argl dense
Dol:off wht wht lt gry tan,red
i.p.mottl fn grn xln sm argl dense



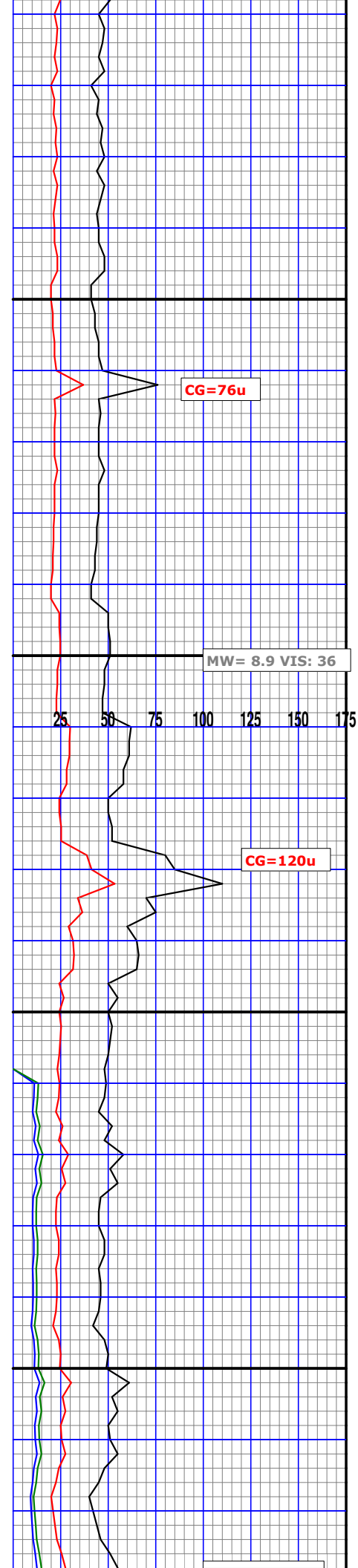
WOB= 12
RPM= 60
SPM= 160
PP= 1950

MD 2910'
TVD 2908.68'
INC 1.20°
AZM 223.10°
VS 0.00'
DLS 0.00°



SH: gry blk occ blk frm- hrd
plty blkly flky ip occ chnky rthy
txt, v calc, gummy
SS: lt gry, gry, sbang, sbrnd
uncons, mod srted, fn grn

SH: red, gry, drk gry frm- hrd
plty blkly occ chnky rthy
txt, sli calc, aren, amor i.p.
SS: lt gry, gry, sbang, sbrnd
uncons, mod srted, fn grn



MD 3130'
TVD 3129.64'
INC 1.10°
AZM 218.70°
VS 0.00'
DLS 0.00°

MD 3130'
TVD 3129.64'
Inc 1.10°
AZM 217.70°

50

CG=94u

3200

MW= 9.0 VIS: 34

LS: lt gry,lt grn, off wht
mdstn,crptxln-micxln,
sftmodfrm,fn grn, aren ip,
v calc, no vis flor

300 150 100 50

WOB= 10
RPM= 53
SPM= 134
PP= 1945

CG=90u

50

SH: gy, dk gy, lt gy,sft-frm,
bcky-sbbcky,plty, rthy txt,
sli calc LS: offwht, wht, gy,
vfn-fn xln, dense

3300

CG=96u

MD 3350'
TVD 3349.60'
INC 1.00°
AZM 215.10°
VS 0.00'
DLS 0.00°

MD 3351'
TVD 3349.60'
Inc 1.0°
AZM 215.10°

CG=59u

LS: lt gry,lt grn, off wht
mdstn,crptxn-micxn,
sftmodfrm,fn grn, aren ip, sli
arg ip,no fluor,no cut,tr snd

MW= 9.1 VIS: 40

300 150 100 50

25 50 75 100 125 150 175

WOB= 14
RPM= 61
SPM= 134
PP= 2139

CG=78u

TOKRAWN

LS: lt gry,lt grn, off wht
mdstn,crptxn-micxn,
sftmodfrm,fn grn, aren ip, sli
arg ip,no fluor,no cut

CG=75u

MD 3570'
TVD 3568.57'
Inc 0.80°
AZM 219.60°

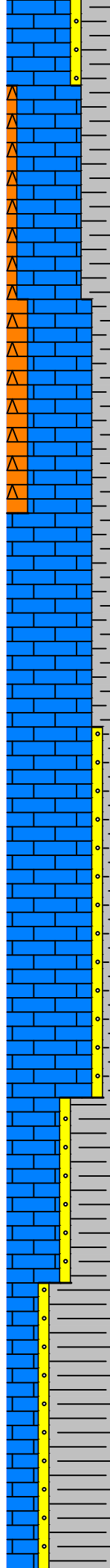
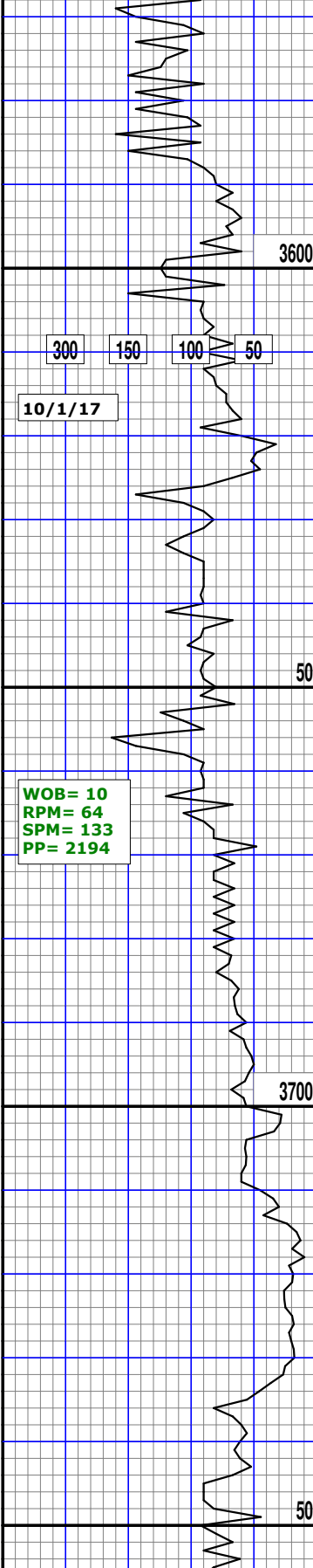
3400

50

3500

50

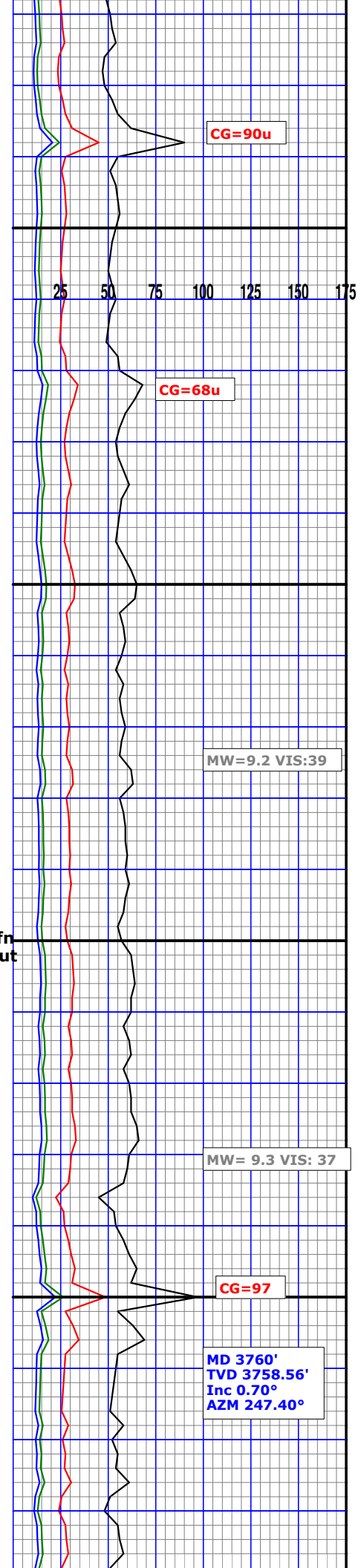
MD 3570'
TVD 3568.57'
INC 0.80°
AZM 219.60°
VS 0.00'
DLS 0.00°

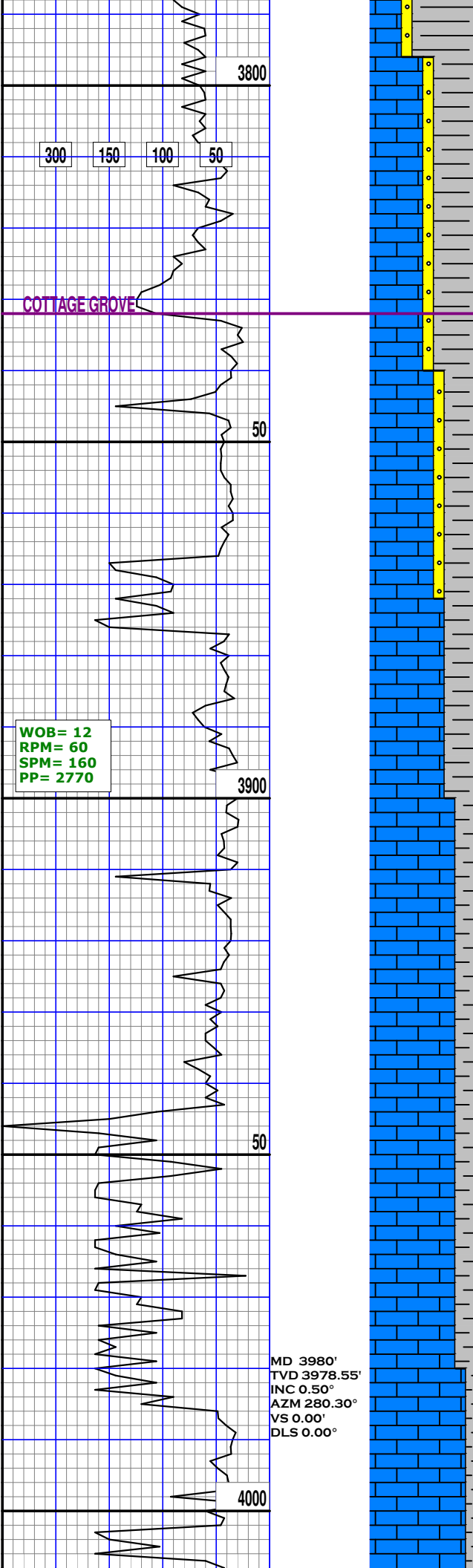


SH: gy, dk gy, lt gy, frmhrd,
blcky-pltyflky ,sli calc
aren LS: offwht, wht, gy,vfn-
fn xln, dense, argil, no vis flor

LS: crm, tan, off wht, wht, mdstn
crptxln-micxln, sft to mod frm, fr
grn, sli arg ip, dul yel flor, ring cut

MD 3760'
TVD 3758.56'
INC 0.70°
AZM 247.40°
VS 0.00'
DLS 0.00°

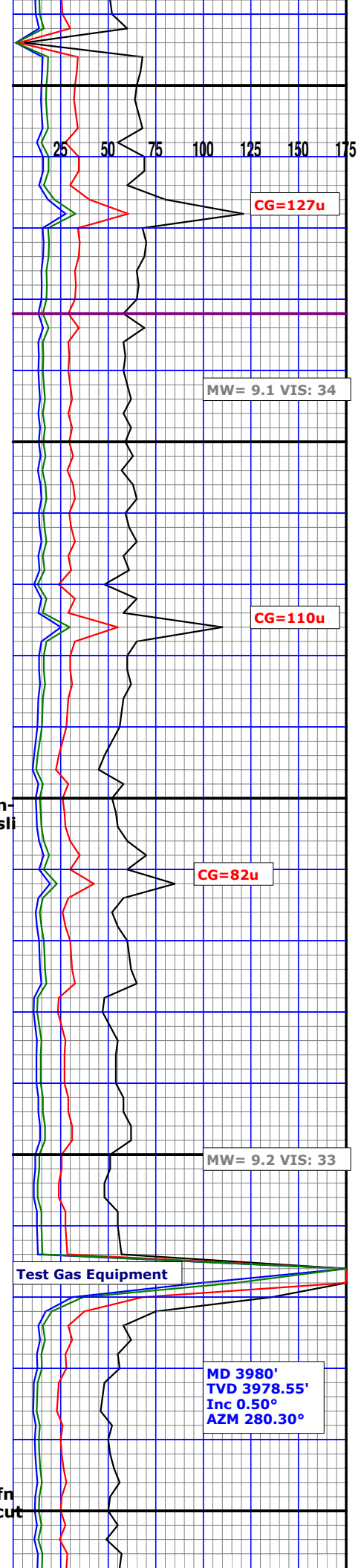




SH:gry,lt gry,occ blk,frm to hrd,plty,blky,flky, brit aren,amor,v slli calc

LS:crm,tan,offwhtmdstn,crptxn-micxln, sft to mod frm,fn grn, sli arg ip,dul yel flor,ring cut

LS:crm,tan,offwht,wht,mdstn, crptxn-micxln, sft to mod frm,fn grn, sli arg ip,dul yel flor,ring cut v calc



CG=127u

MW= 9.1 VIS: 34

CG=110u

MW= 9.2 VIS: 33

CG=82u

Test Gas Equipment

MD 3980'
TVD 3978.55'
Inc 0.50°
AZM 280.30°

300 150 100 50

25 50 75 100 125 150 175

3800

50

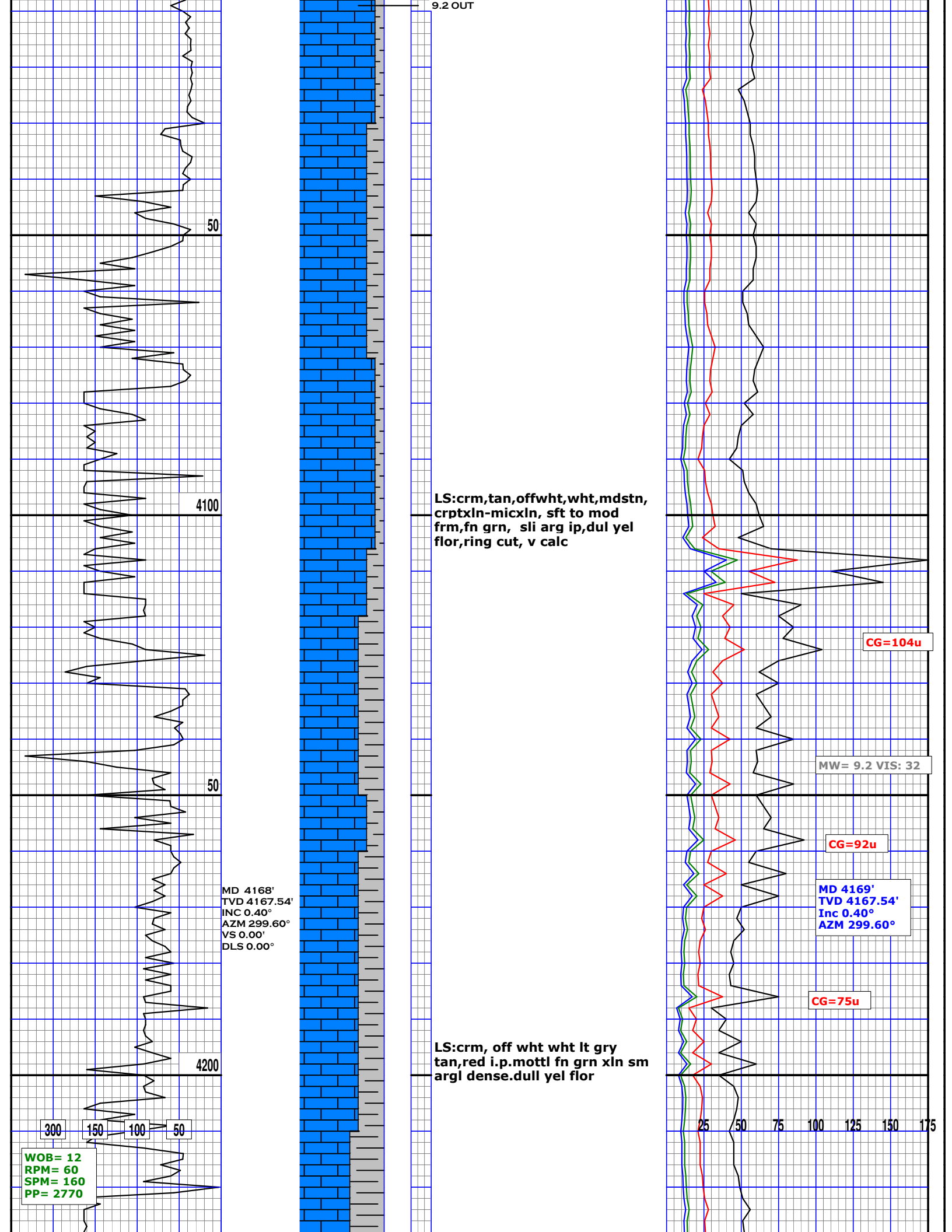
3900

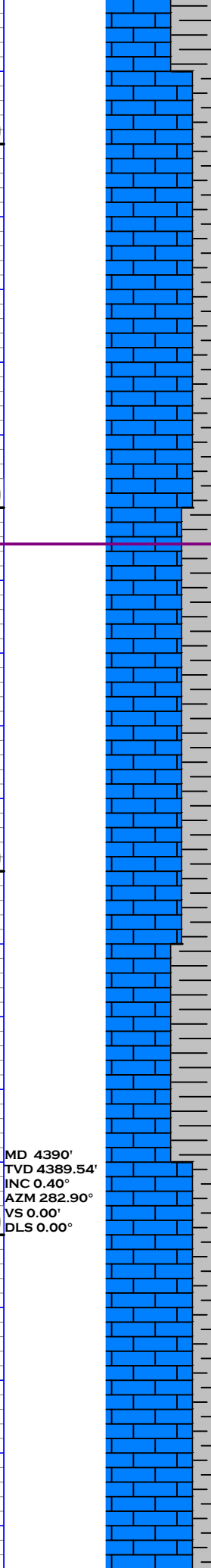
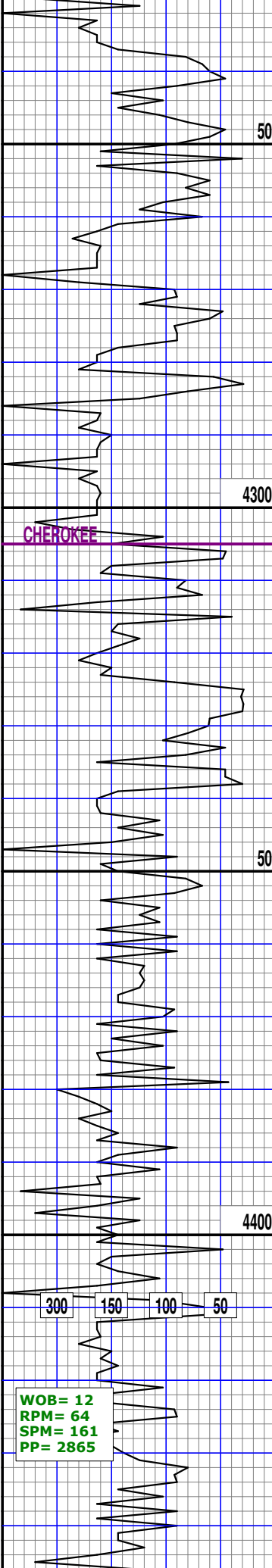
50

4000

COTTAGE GROVE

WOB= 12
RPM= 60
SPM= 160
PP= 2770

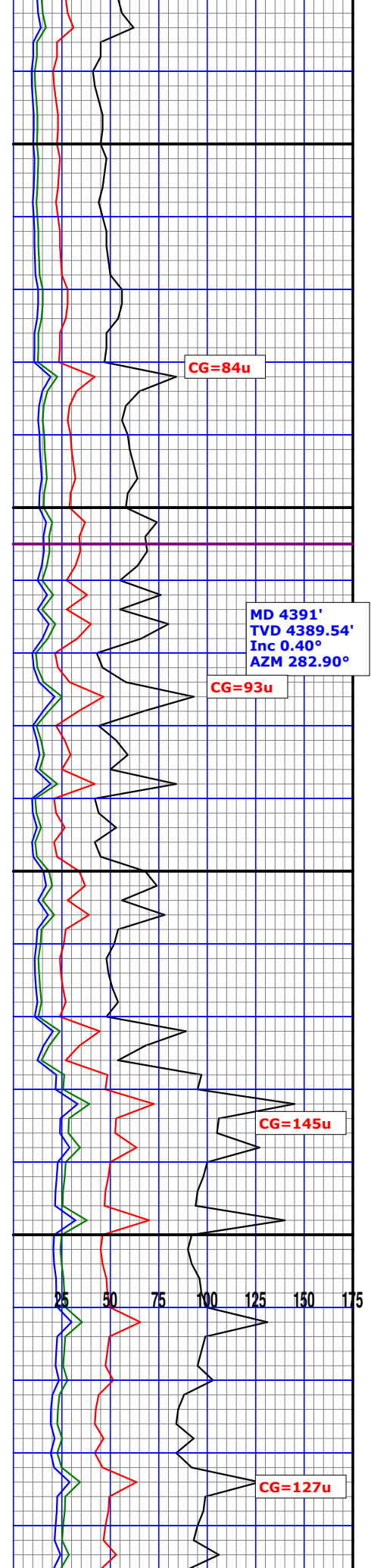




LS:crm,tan,offwht,wht,mdstn,
crptxn-micxn, sft to mod
frm,fn grn, sli arg ip

SH:gry,lt gry,occ blk,frm
to hrd,plty,blky,flky, brit
aren,amor,v slli calc

MD 4390'
TVD 4389.54'
INC 0.40°
AZM 282.90°
VS 0.00'
DLS 0.00°



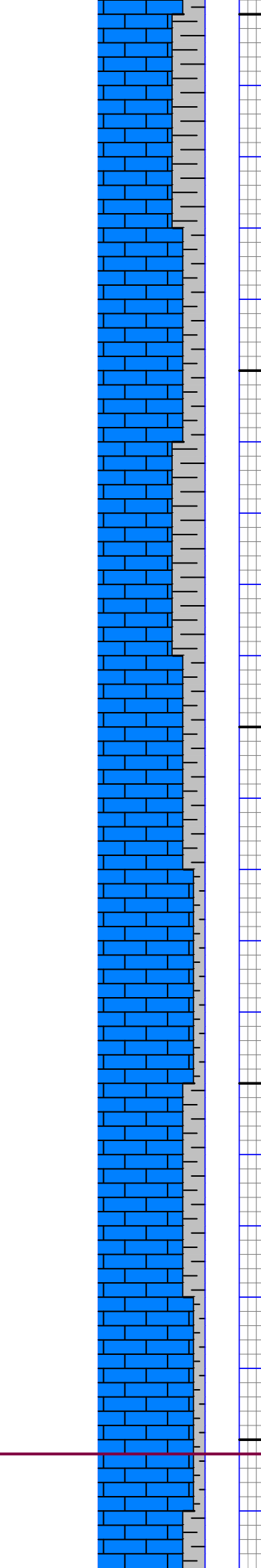
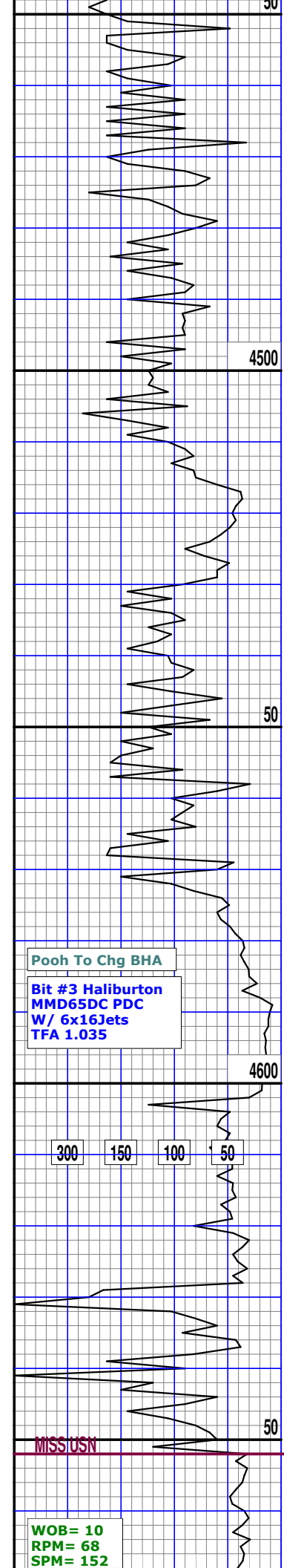
CG=84u

MD 4391'
TVD 4389.54'
Inc 0.40°
AZM 282.90°

CG=93u

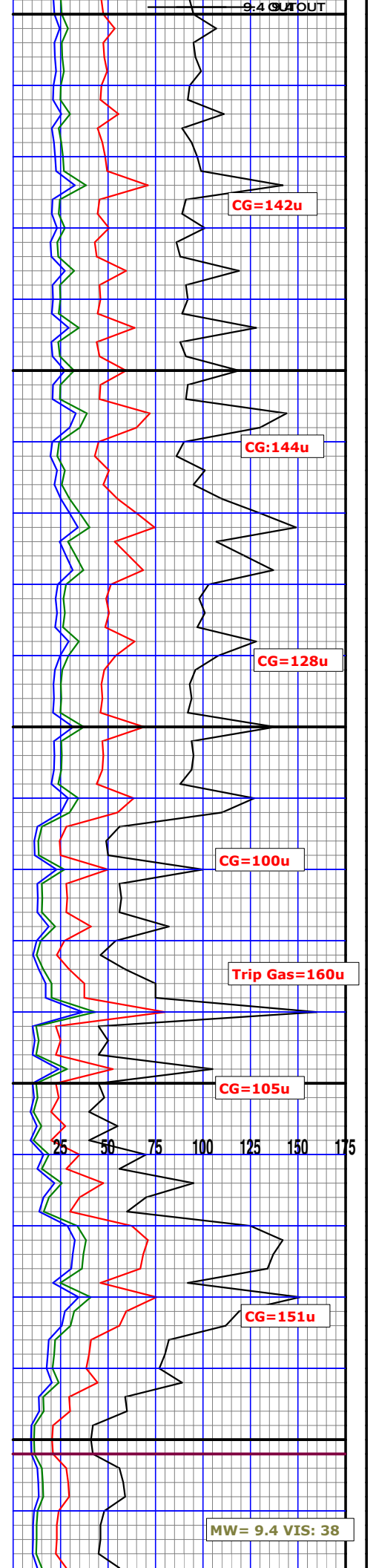
CG=145u

CG=127u



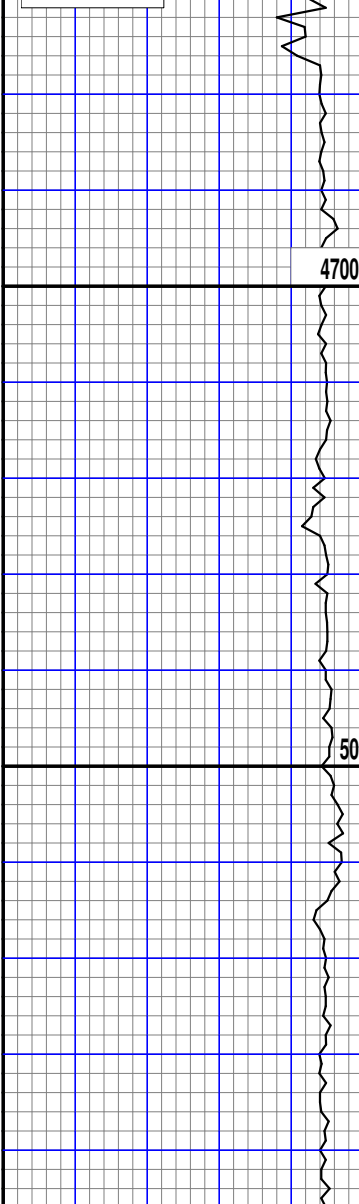
SH:gry,lt gry,occ blk,frm
to hrd,plty,blky,flky, brit
aren,amor,v slli calc

LS:off wht wht lt gry tan
mottl fn grn xln sm argl dense
SH:gry blk occ blk frm- hrd s
plty blky flky ip occ chnky rthy
txt



PP= 2750

9.4 OUT

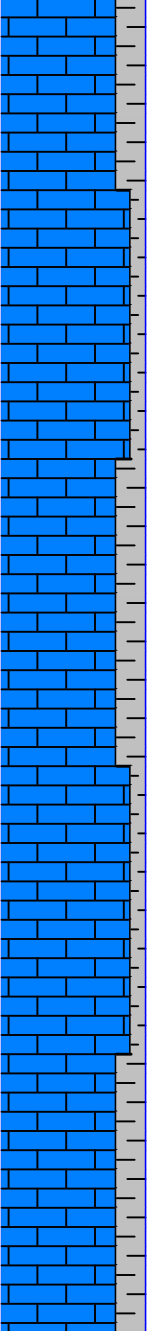


10/3/17

Spotted 80 BBL LCM Pill

WOB= 19
 RPM= 80
 SPM= 120
 PP= 1850

MD 4800'
 TVD 4798.49'
 INC 1.10°
 AZM 314.60°
 VS 0.00'
 DLS 0.00°

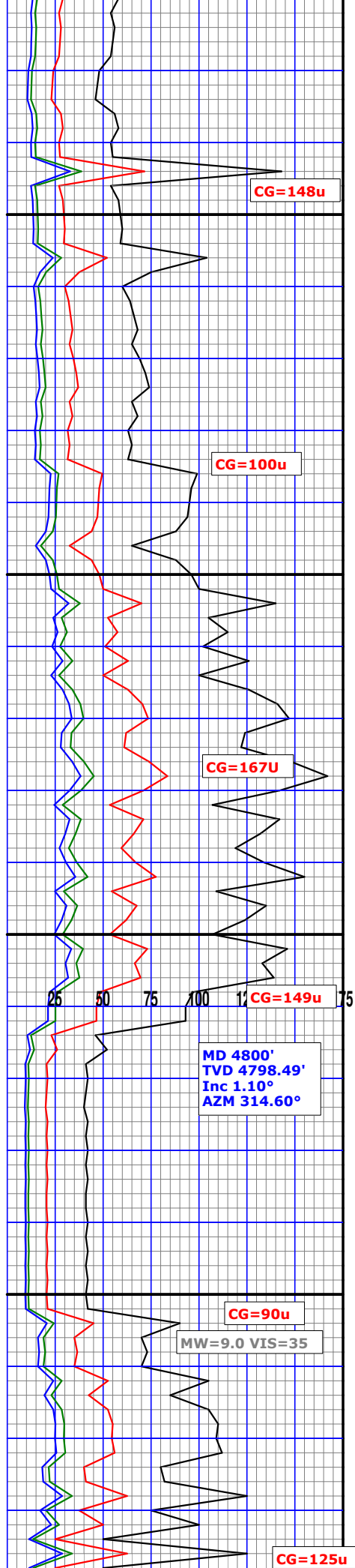


Lost Returns

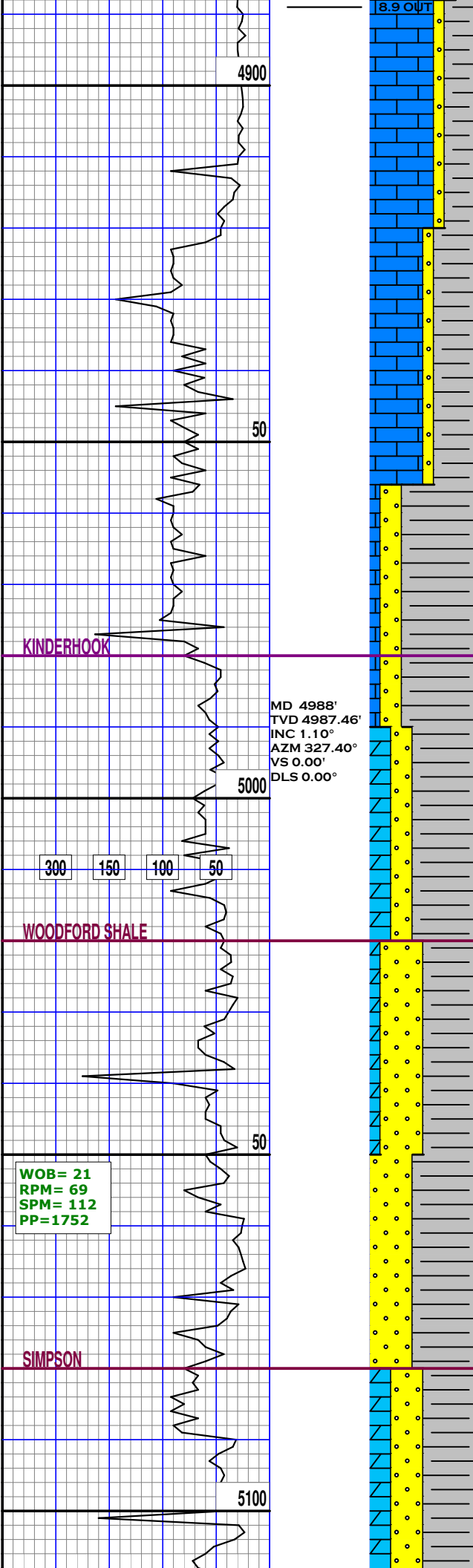
No Sample Over Shakers

LS: lt gry,lt grn, tan,lt brn
 mdstn,crptxln-micxln, sft-mod
 frm,fn grn, aren ip, sli arg ip,
 SH;lt gry gry, frm-vhrd
 plty flky blk,v sml cuttings,
 aren,v calc

LS:off wht wht lt gry tan
 mottl fn grn xln sm argl dense
 SH:gry blk occ blk frm- hrd s
 plty blkly flky ip occ chnky rthy
 tx



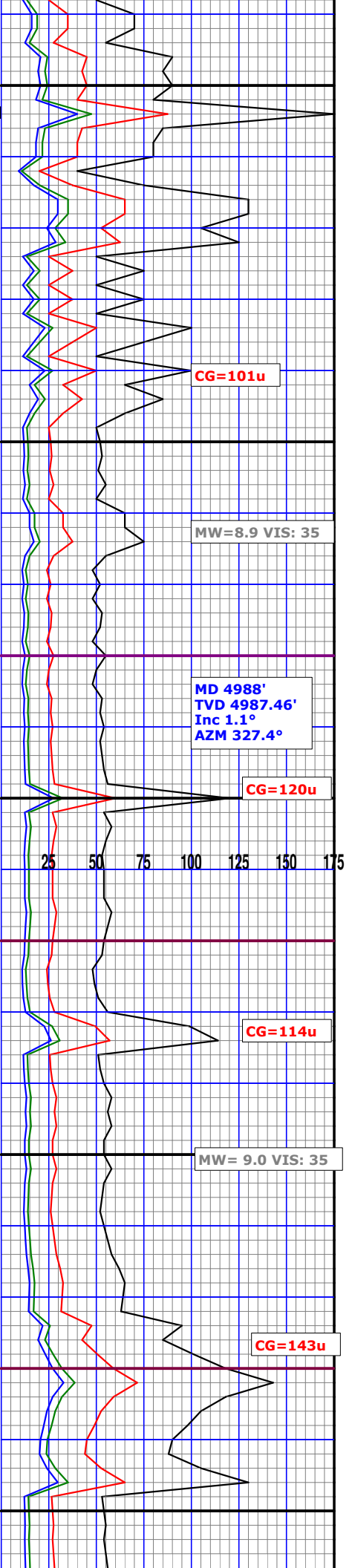
MD 4800'
 TVD 4798.49'
 Inc 1.10°
 AZM 314.60°



LS: off wht, crm, tan, brn tan
 mod frm-hrd mottl fn grn xln
 sm argl dense
 SH: drk gry, occ red, frm-hrd
 SD: clr, offwhtfngrn, sbang
 sbrnd, uncons, lsly srted, 40% Dull
 yel. flor w/ ring cut

Dol: lt gry, grycrm, drk gry I.p.
 mdstn, crptxln-micxln, sft-mod
 frm, fn grn, aren ip, sli arg ip,
 SH; lt gry gry, frm-vhrd
 plty flky blkly, v sml cuttings,
 aren, v calc 30% dull ylw fluor no
 cut

SS: wht, crm, lt gry, sml grn
 sbang sbrnd, msly uncons to
 cons i.p., calclign sand, wl
 srted, no vis flor,



SIMPSON SHALE

50

5200

300 150 100 50

WOB= 21
RPM= 68
SPM= 112
PP=1679

10/4/17

50

ARBUCKLE

5300

SH:gy, dk gy, occ brwn
frm,hrd ,blcky, plty,flky, rgh
txt,aren,amor,wxy tnt, vcalc
20%-30%brght ylw flour rng cut

LS:wht,crm,brn,drk gry I.p.
mdstn,crptxln-micxln, sft-mod
frm,fn grn, aren ip, sli arg ip
c calc, 75% brt yellow flor w/
flash cut

CG=159u

CG=118u

CG=162u

MW= 9.1 VIS: 37

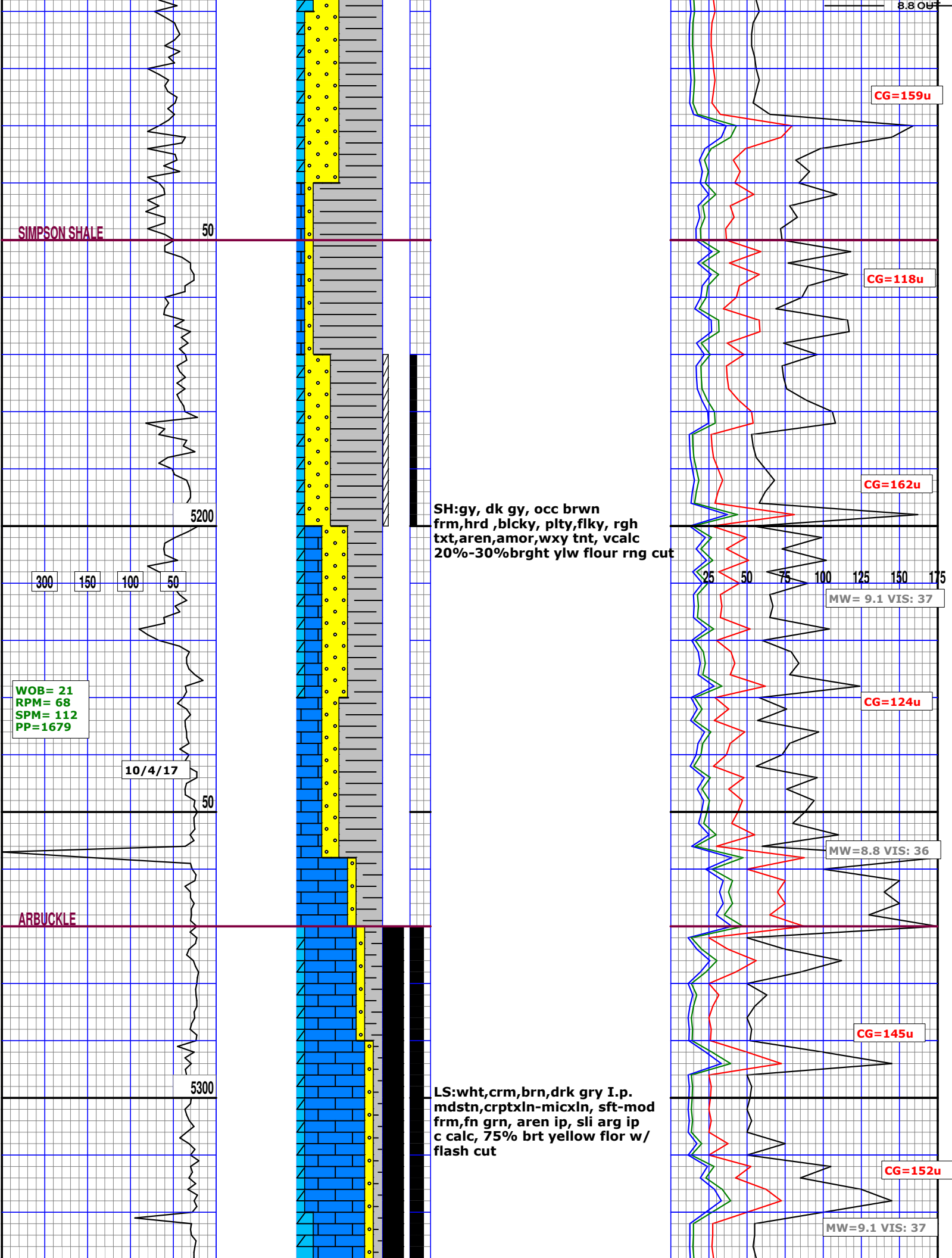
CG=124u

MW=8.8 VIS: 36

CG=145u

CG=152u

MW=9.1 VIS: 37



Set 7" Casing@ 5360'
Tested to 1500PSI
Bit#4 6.125" STC
XR50Y Tricone W/
3x16 Jets

MD 5350'
TVD 5349.38'
INC 1.30°
AZM 332.80°
VS 0.00'
DLS 0.00°

10/6/17

5400

300 150 100 50

Drilling W/ Fresh Water

10/7/17

50

5500

WOB=17
RPM= 35
SPM= 81
PP=1341

9.0 OUT

LS:off wht,crm,tan,brn tan
mod frm-hrd mottl fn grn xln
sm argl dense
SH: drk gry,occ red,frm-hrd
SD:clr,offwhtfngrn,sbang
sbrnd,uncons,lsly srted, 30%
Dull yel.flor w/ ring cut

Dol:dul wht,crm,mdstn,
crptxln-micxln, sft-mod
frm,fn grn, aren ip, sli arg ip,
20% Brt Yel Flor, tr cut

MD 5351'
TVD 5349.38'
Inc 1.3°
AZM 332.8°

CG=120u

TRIP GAS = 446u

25 50 75 100 125 150 175

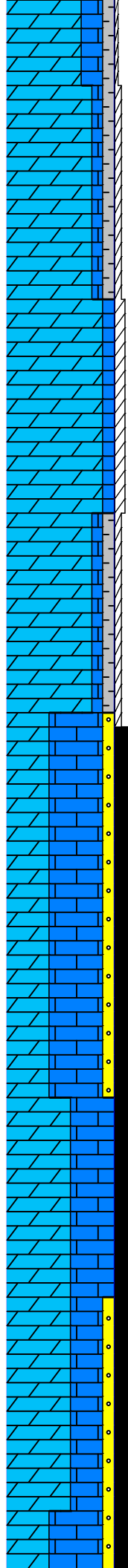
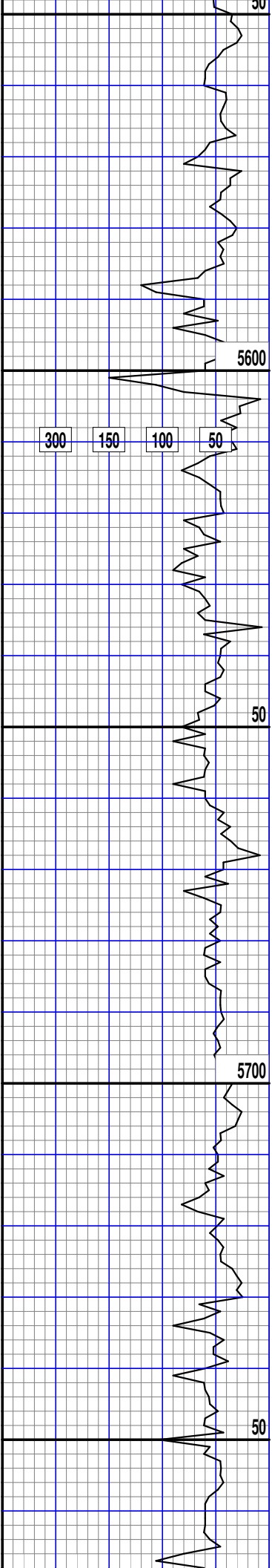
CG=140u

MW=8.8 VIS=36

CG=142u

CG=136u

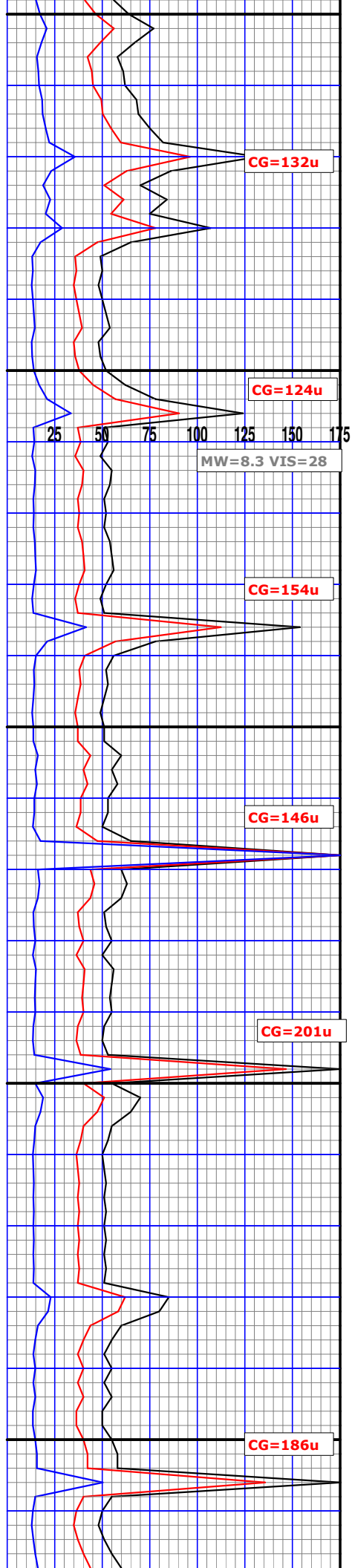
CG=158u

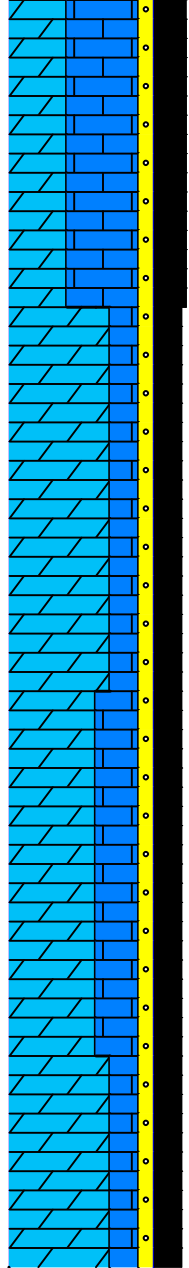
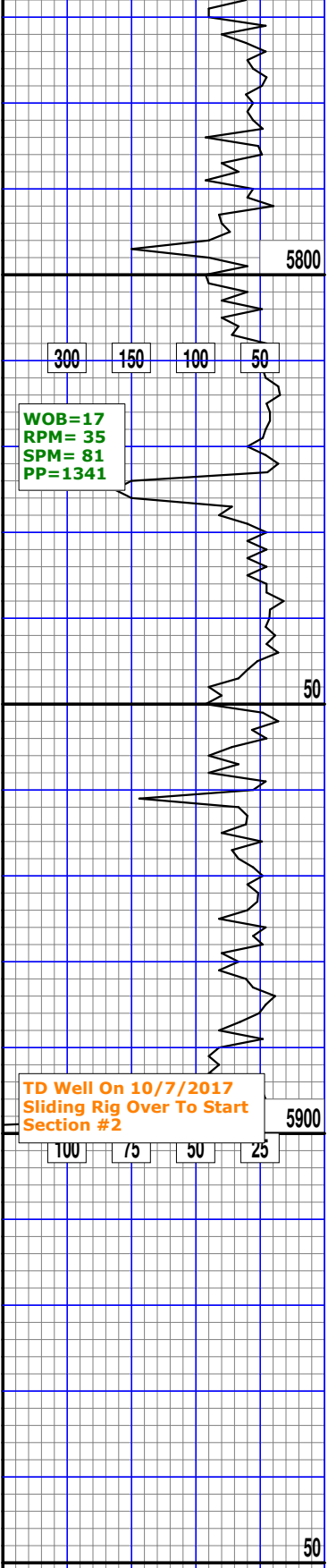


Dol:dul wht,crm,mdstn,
 crptxln-micxln, sft-mod
 frm,fn grn, aren ip, sli arg ip,
 20-30% Brt Yel Flor, ring cut

Dol:dul wht,crm,mdstn,
 crptxln-micxln, sft-mod
 frm,fn grn, aren ip, sli arg ip,
 80% Dul to Brt Yel Flor, Flash
 cut

SVY 2°





Dol:dul wht,crm,mdstn,
crptxlIn-micxlIn, sft-mod
frm,fn grn, aren ip, sli arg ip,
60% Dul to Brt Yel Flor, Flash
cut

Dol:dul wht,crm,mdstn,
crptxlIn-micxlIn, sft-mod
frm,fn grn, aren ip, sli arg ip,
60% Dul to Brt Yel Flor, Flash
cut

