



**COMPOSITE  
LOG**

Company	Taos Resources Operating Company LLC		
Well	Richardson #28-1		
Field	Unnamed		
County	Cowley		
State	Kansas		
Location:	SEC 28 TWP 32S RGE 5E	API #: 15 035 24677	Other Services CDNL BHC ML
Permanent Datum	Ground Level	Elevation	1249'
Log Measured From	KB 5' AGL		
Drilling Measured From	KB		
Elevation			K.B. 1254' D.F. 1253' G.L. 1249'

Date	10-07-17
Run Number	One
Depth Driller	3560'
Depth Logger	3561'
Bottom Logged Interval	3559'
Top Log Interval	210'
Casing Driller	8 5/8" @ 235'
Casing Logger	235'
Bit Size	7 7/8"
Type Fluid in Hole	Chemical
Density / Viscosity	9.5/40
PH / Fluid Loss	10.0/7.6
Source of Sample	Pit
Rm @ Meas. Temp	1.20@76degf
Rmf @ Meas. Temp	0.96@76degf
Rmc @ Meas. Temp	1.54@76degf
Source of Rmf / Rmc	Calculated
Rm @ BHT	0.78@117degf
Time Circulation Stopped	9:45 p.m.
Time Logger on Bottom	12:15 a.m.
Maximum Recorded Temperature	117degf
Equipment Number	T-729
Location	Hays, KS
Recorded By	C.Patterson
Witnessed By	Mr. Mike Pressnall

<<< Fold Here >>>

All interpretations are opinions based on inferences from electrical or other measurements and we cannot and do not guarantee the accuracy or correctness of any interpretation, and we shall not, except in the case of gross or willful negligence on our part, be liable or responsible for any loss, costs, damages, or expenses incurred or sustained by anyone resulting from any interpretation made by any of our officers, agents or employees. These interpretations are also subject to our general terms and conditions set out in our current Price Schedule.

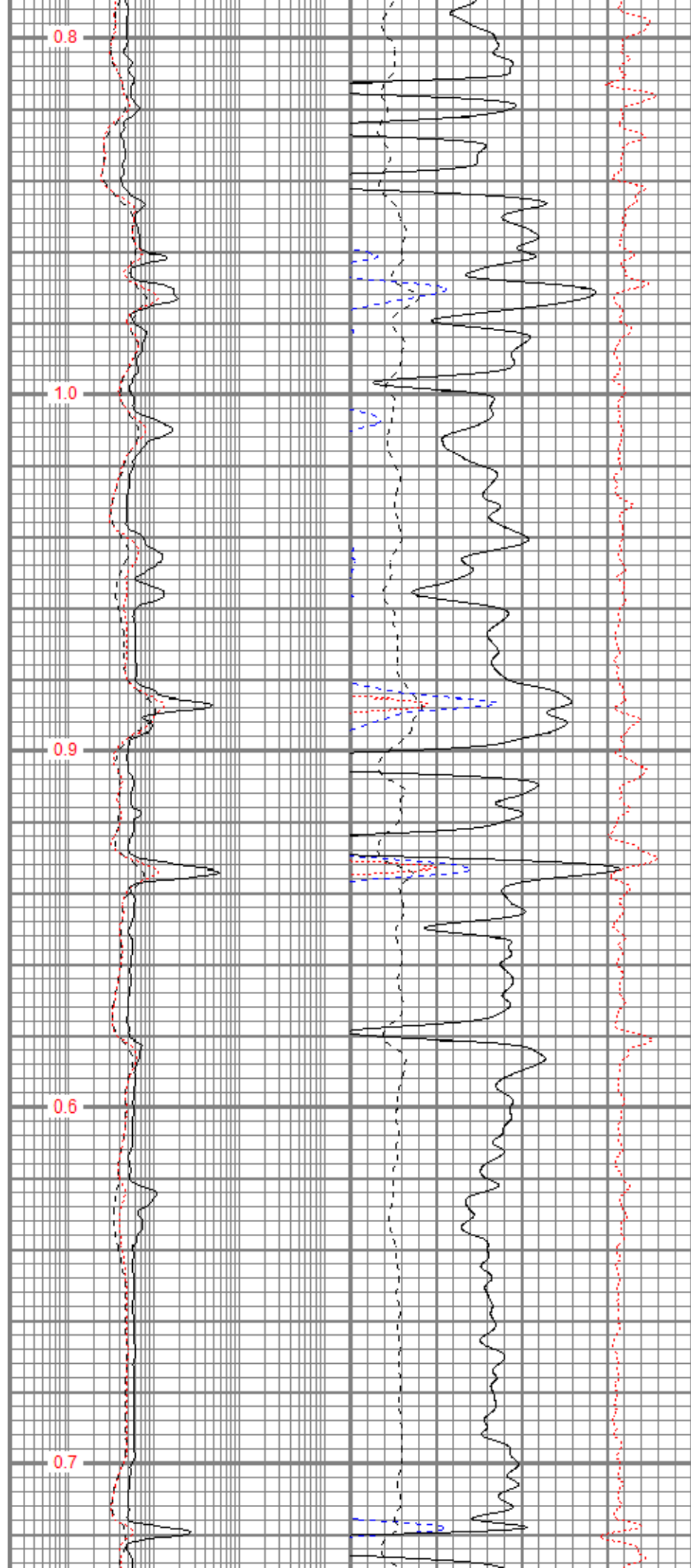
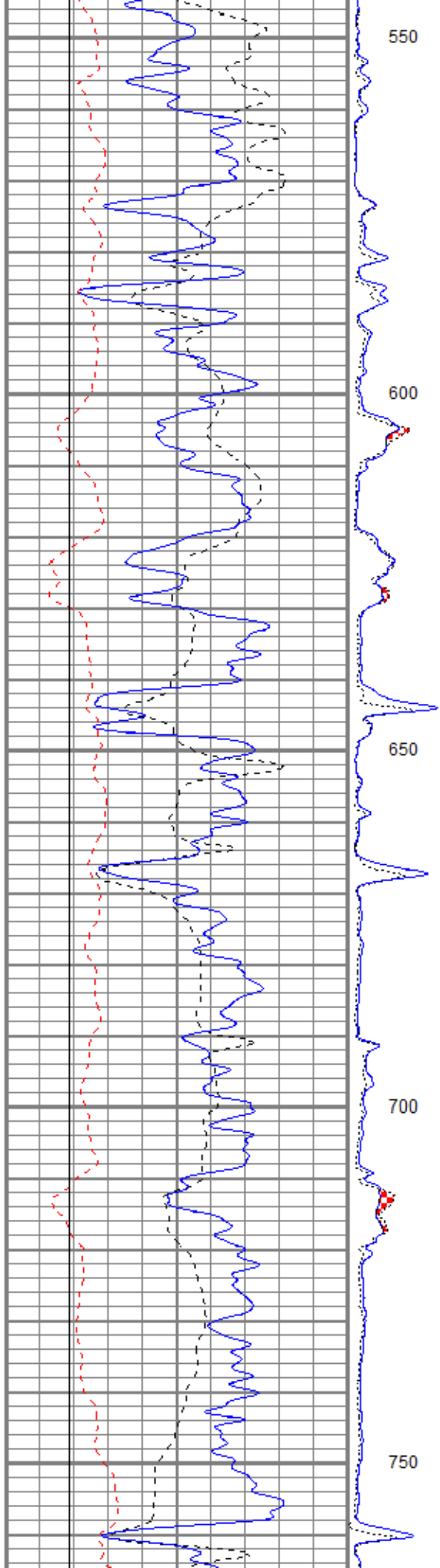
**Comments**

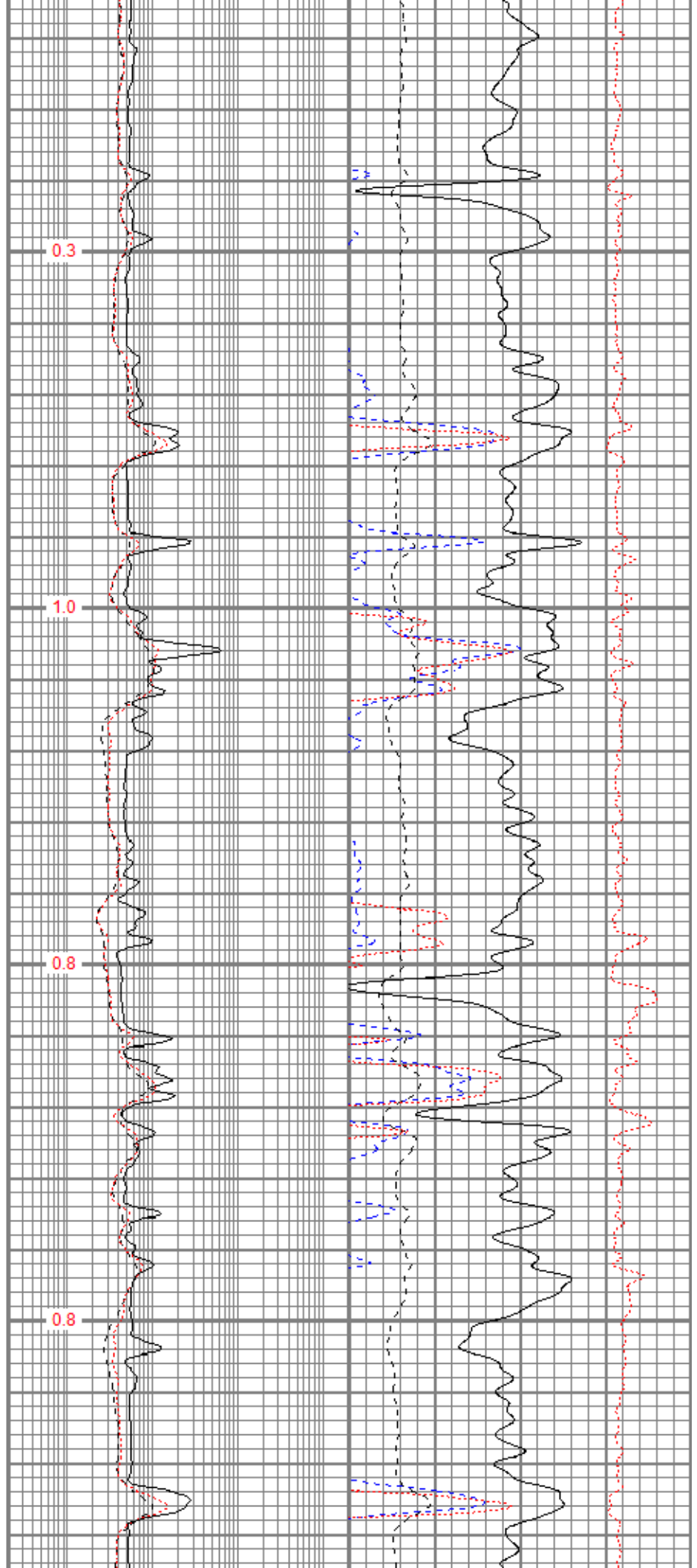
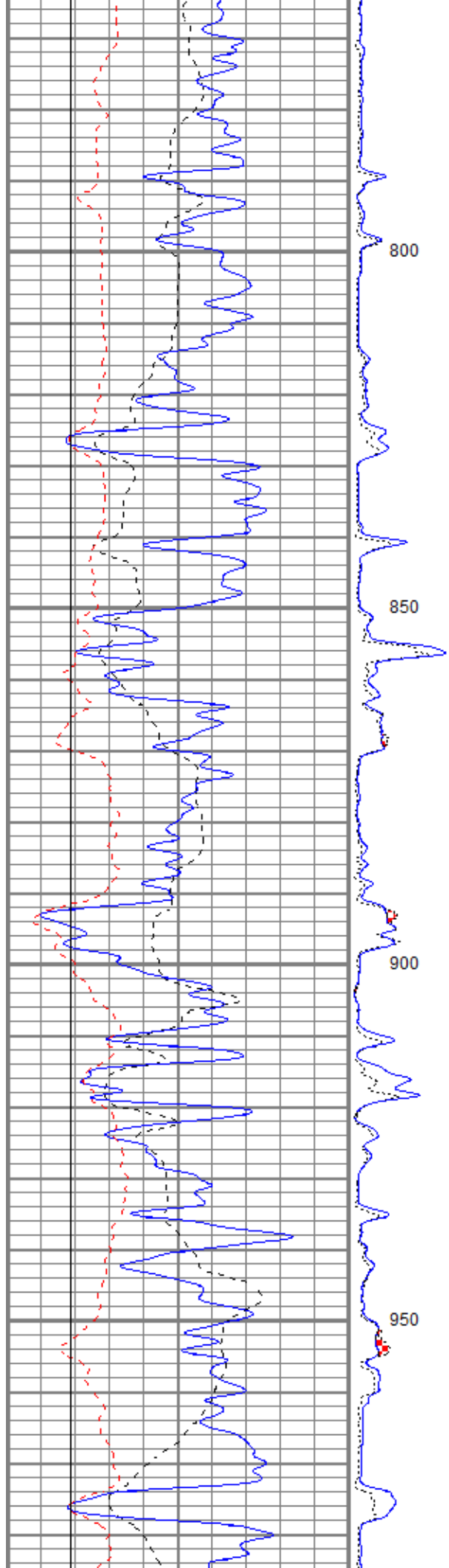
East of Winfield(Main St. and 160 Hwy) 6.5 mi. to 151st rd., 1 south to 172nd Rd.,  
1/2 West, North into Location

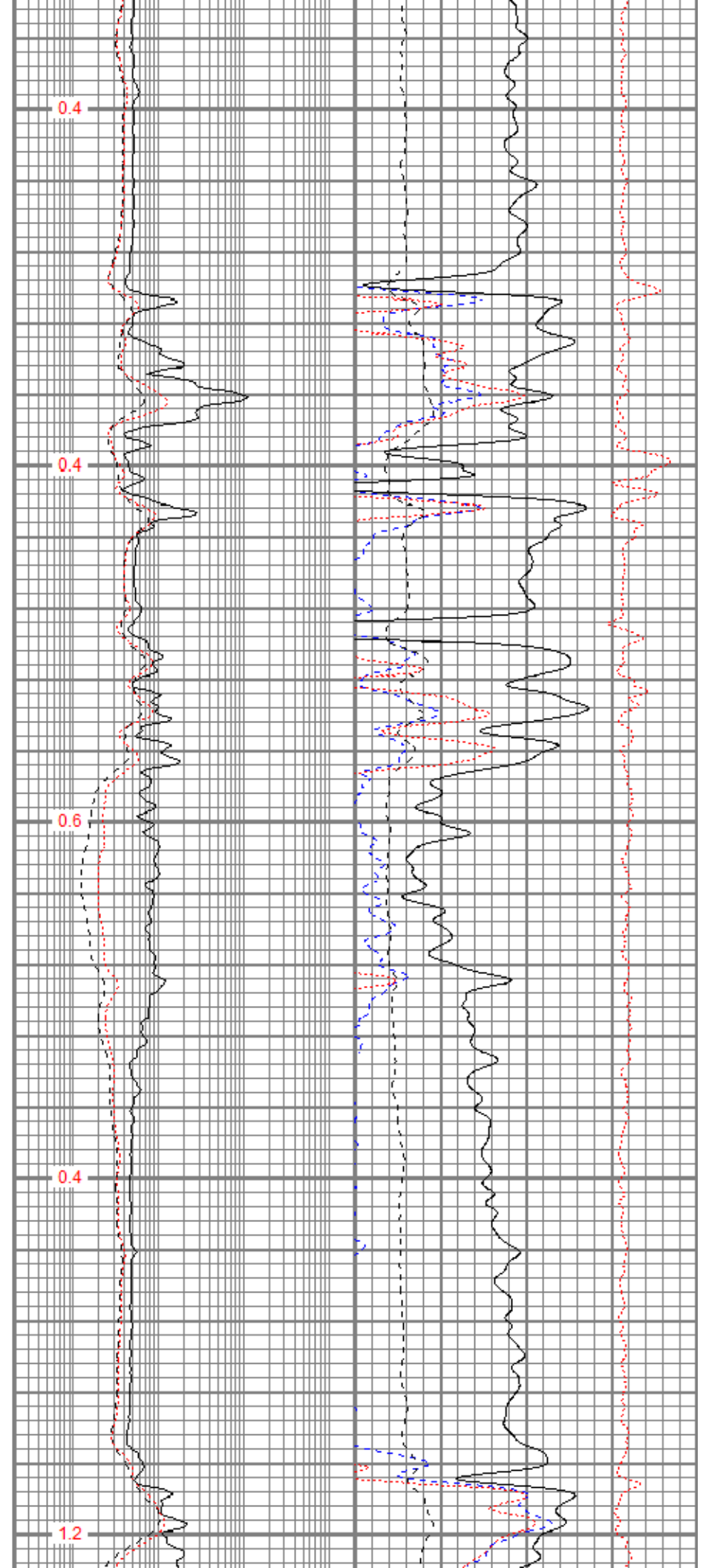
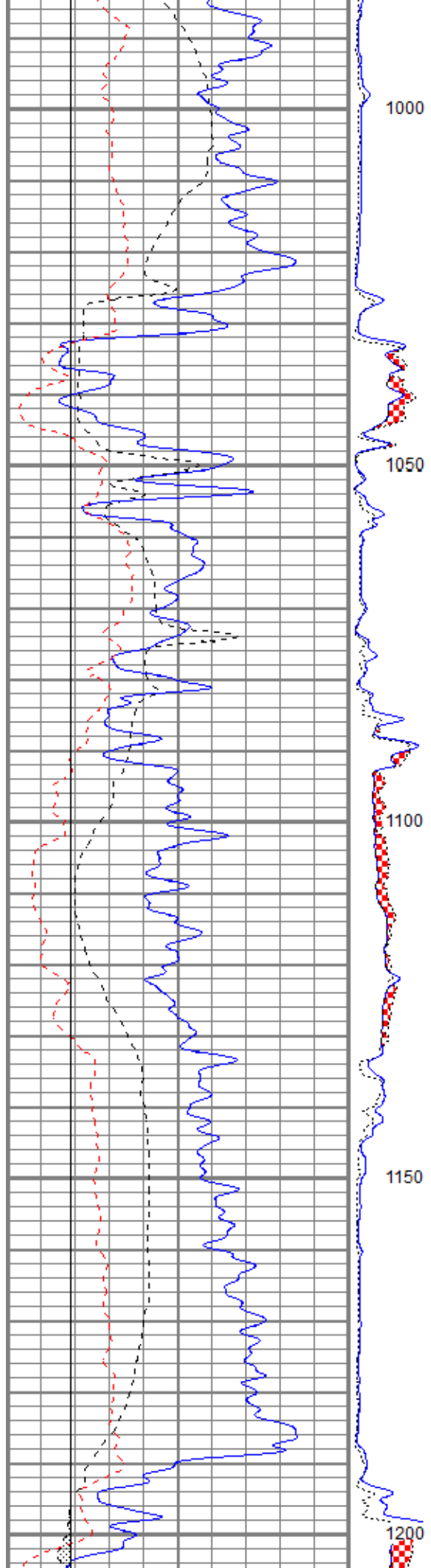
Thank you for using Gemini Wireline  
785-625-1182

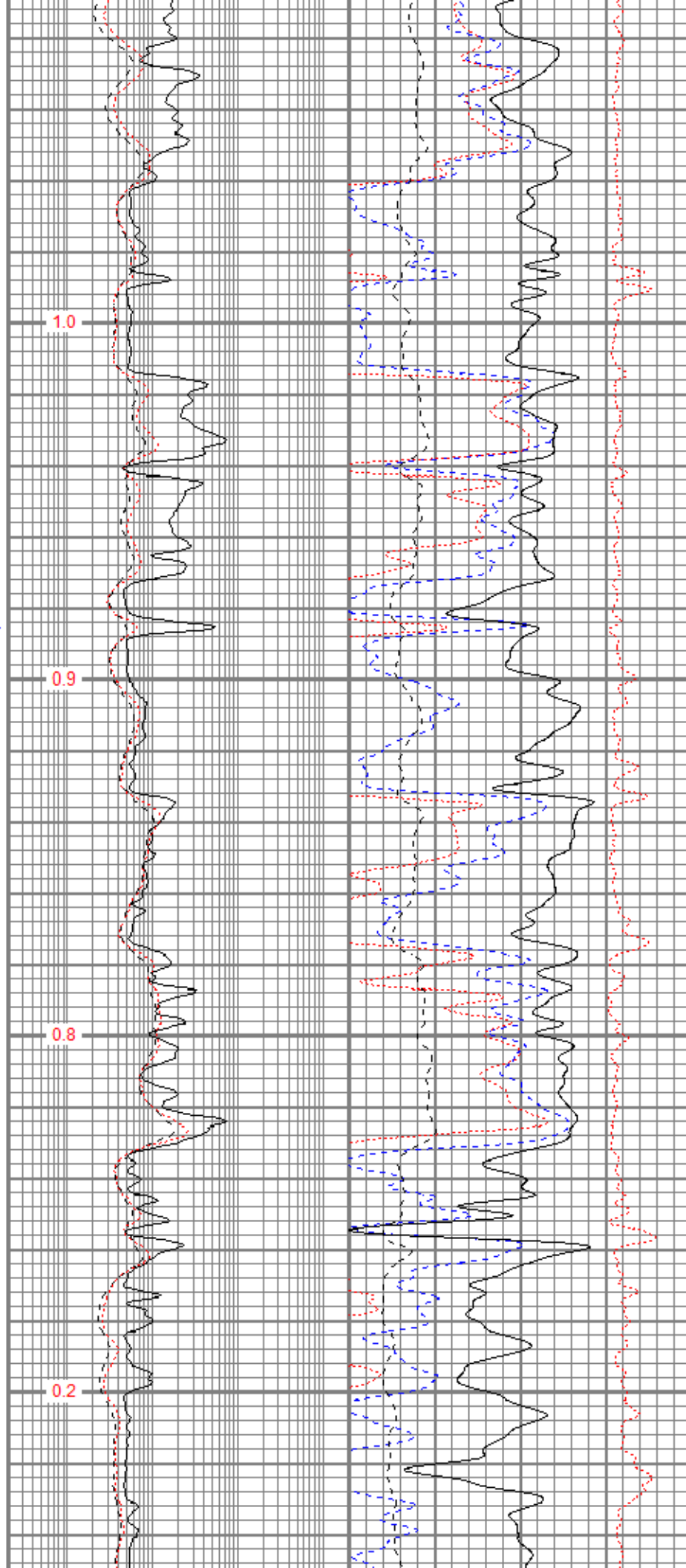
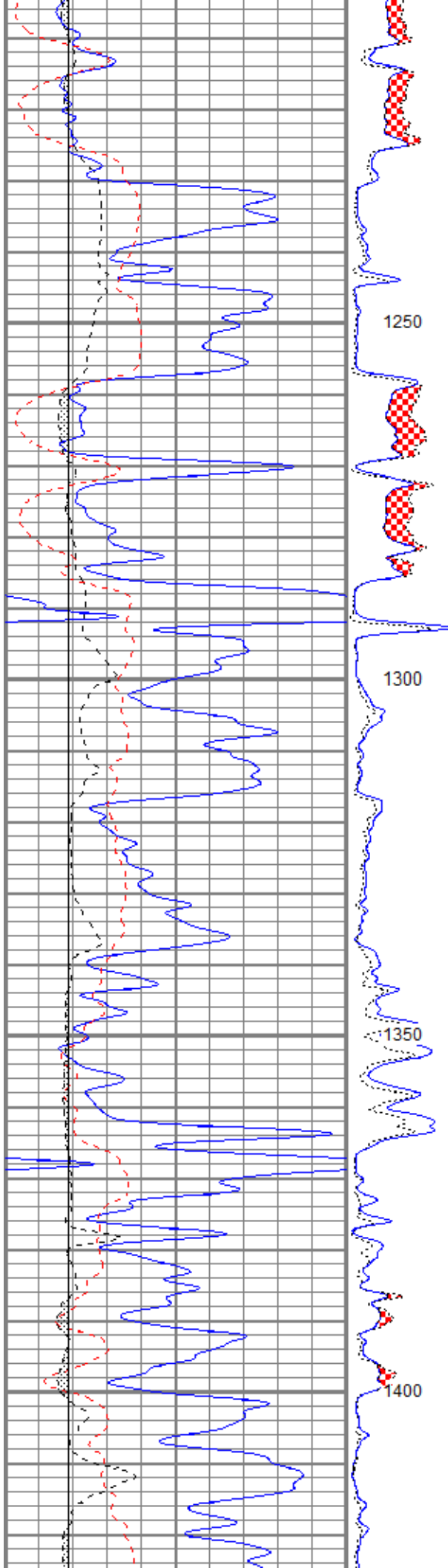
Database File	trorichardson28-1oh.db
Dataset Pathname	pass1combo
Presentation Format	kcombo
Dataset Creation	Sun Oct 08 04:42:46 2017
Charted by	Depth in Feet scaled 1:240

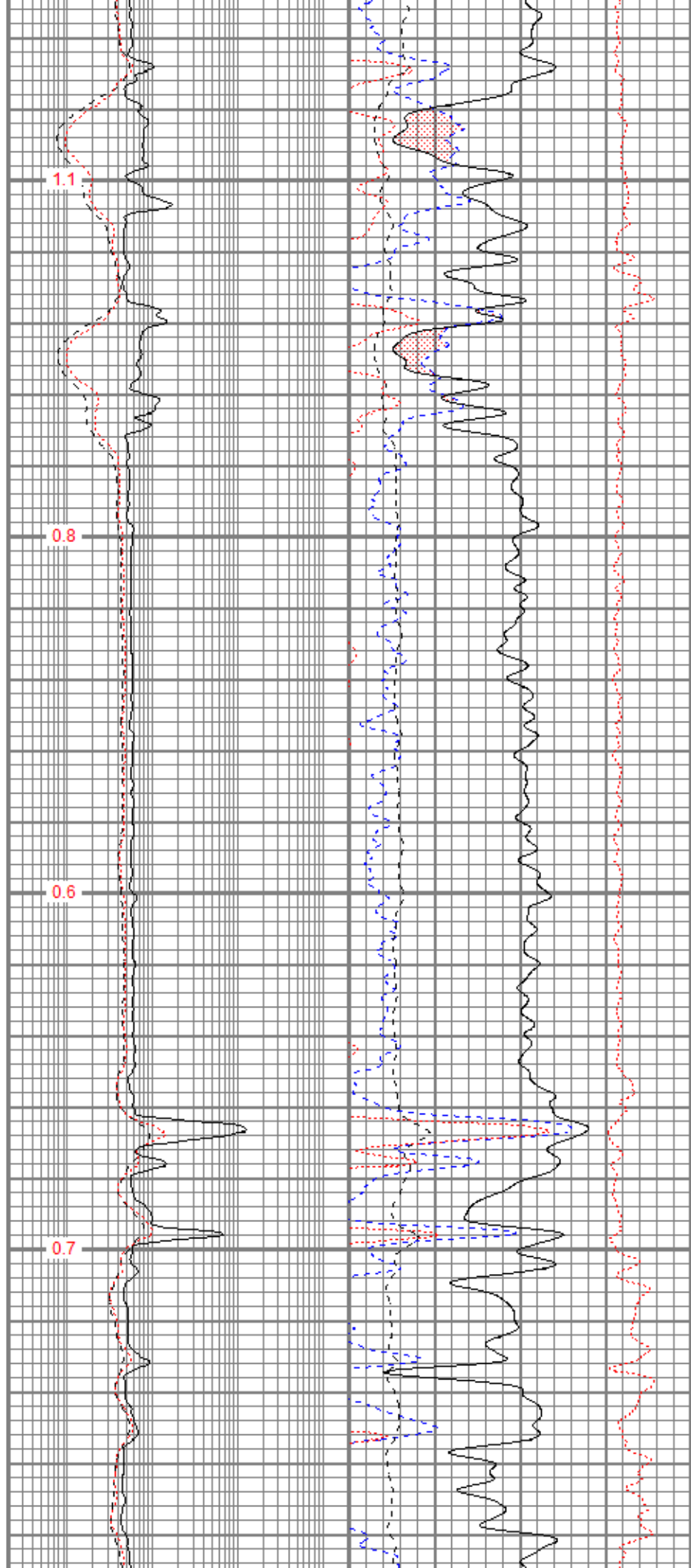
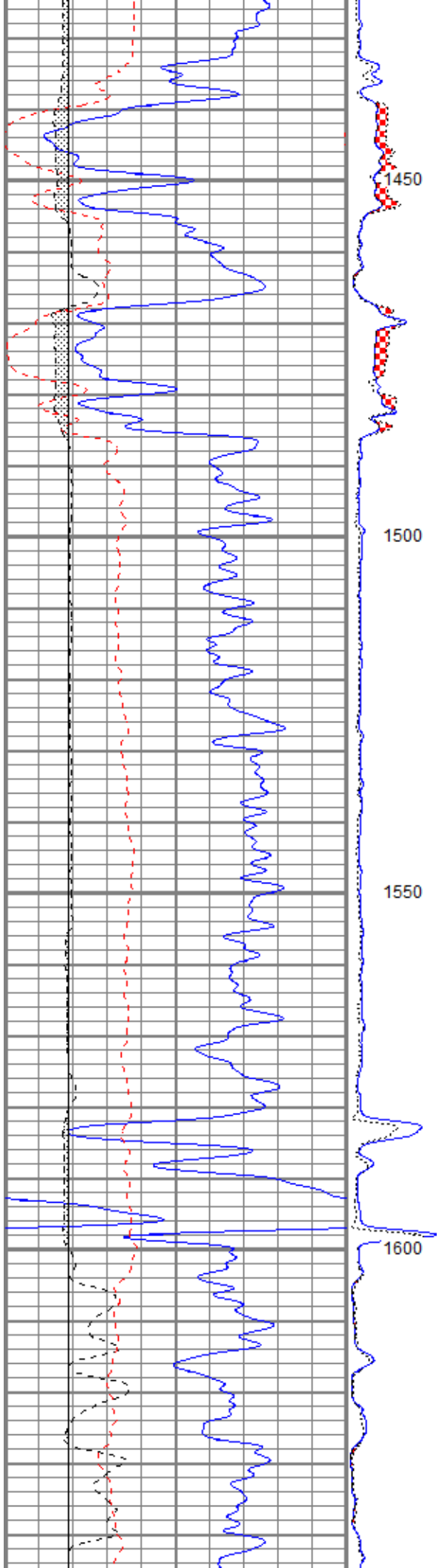


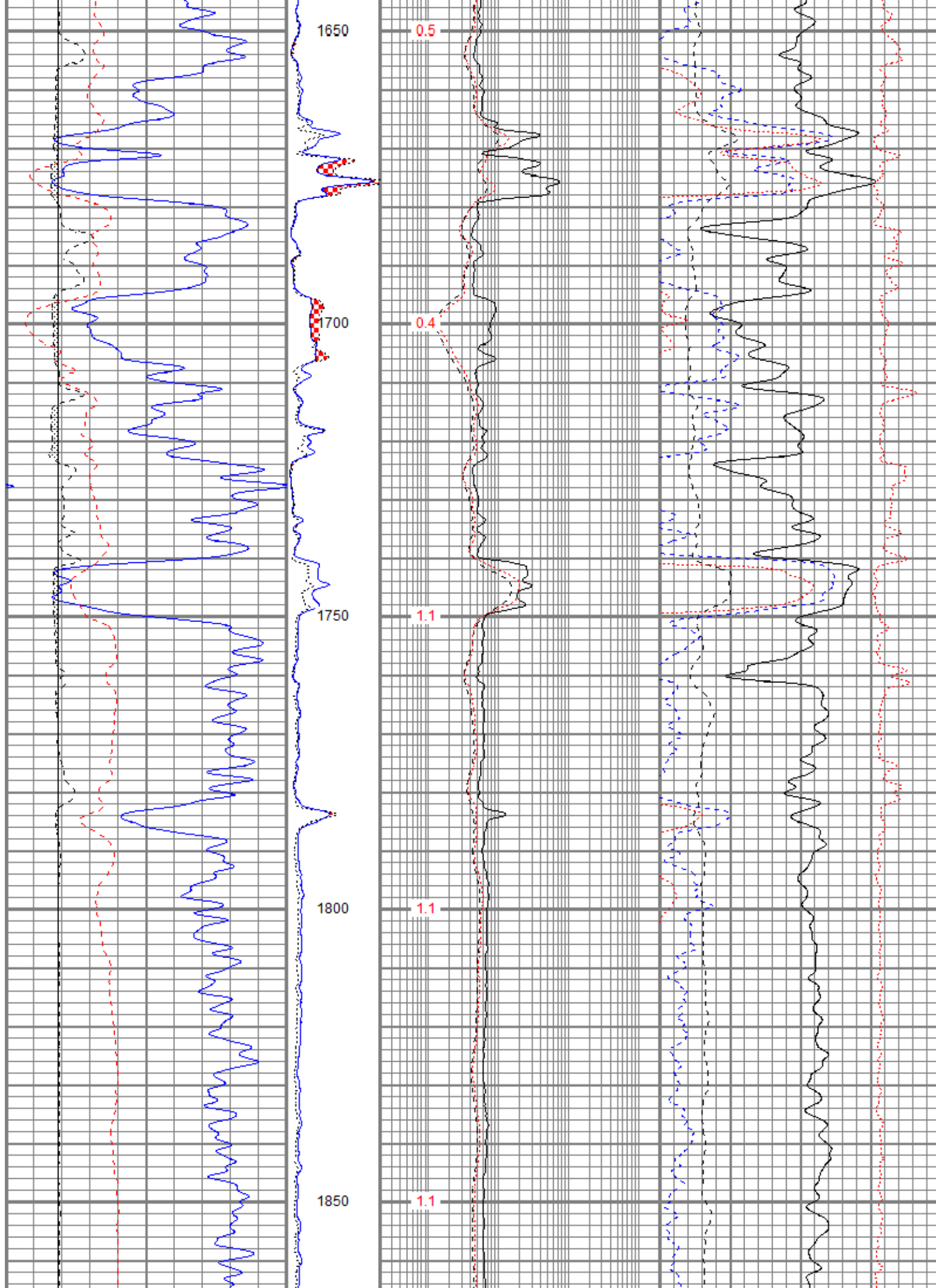


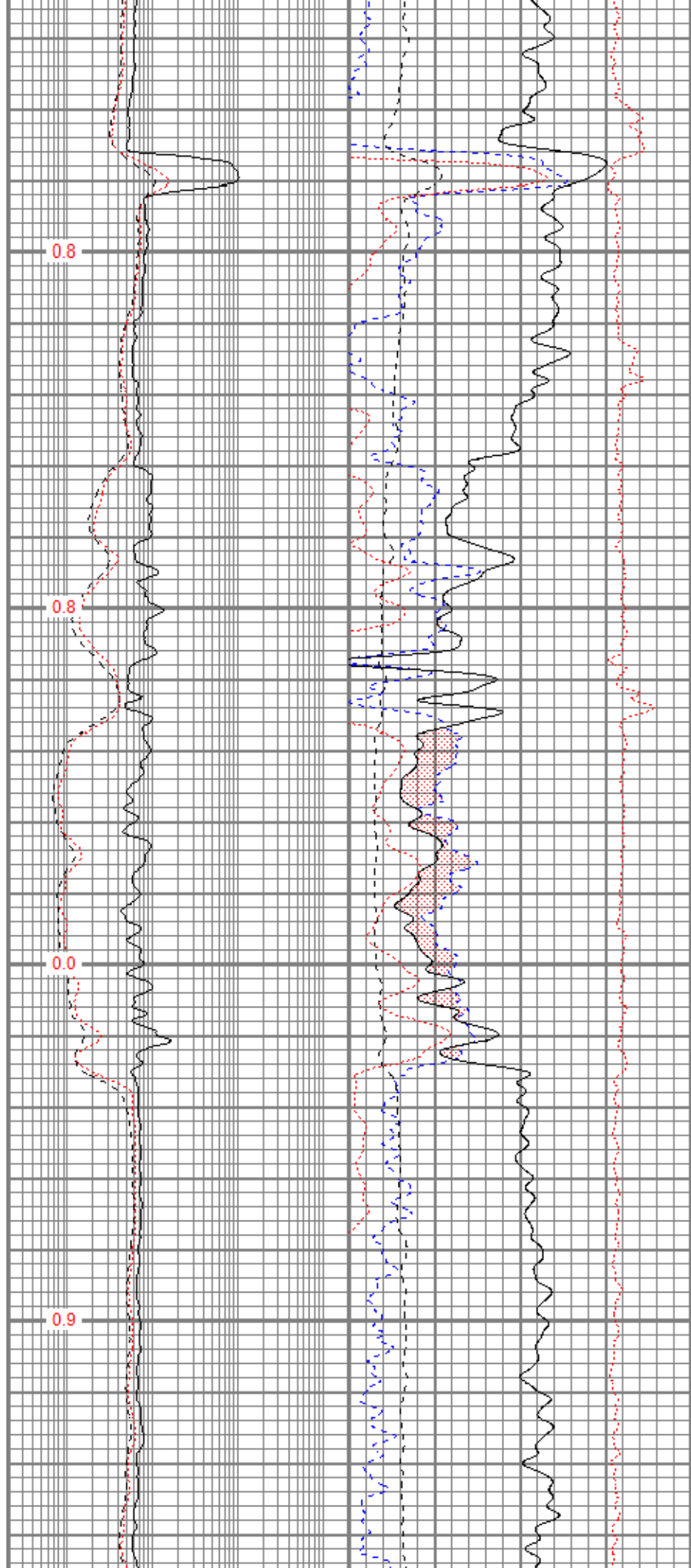
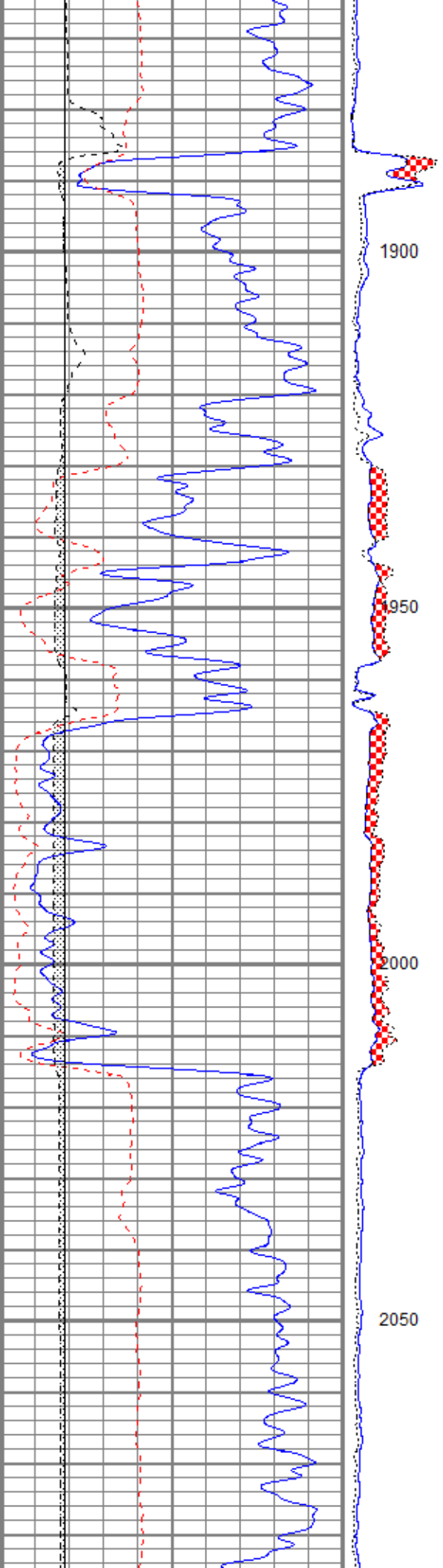


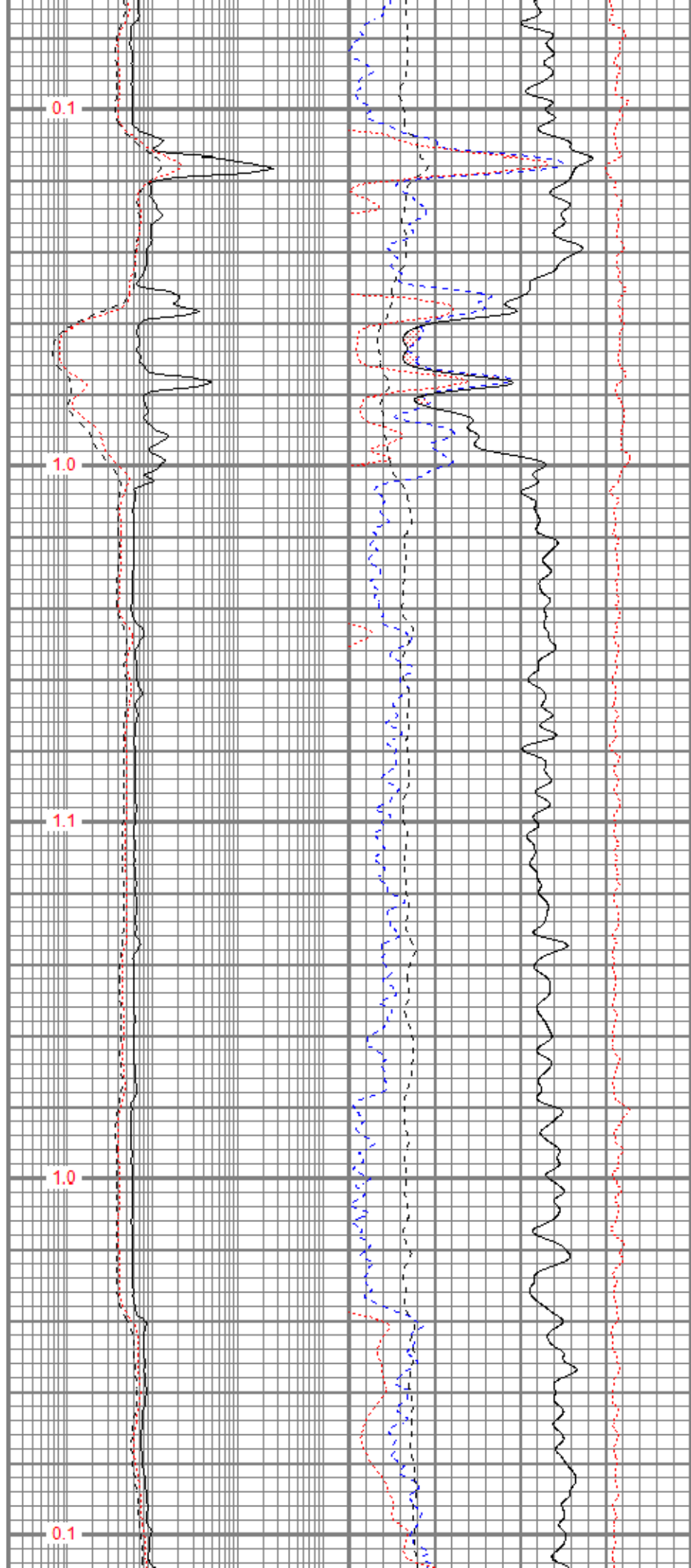
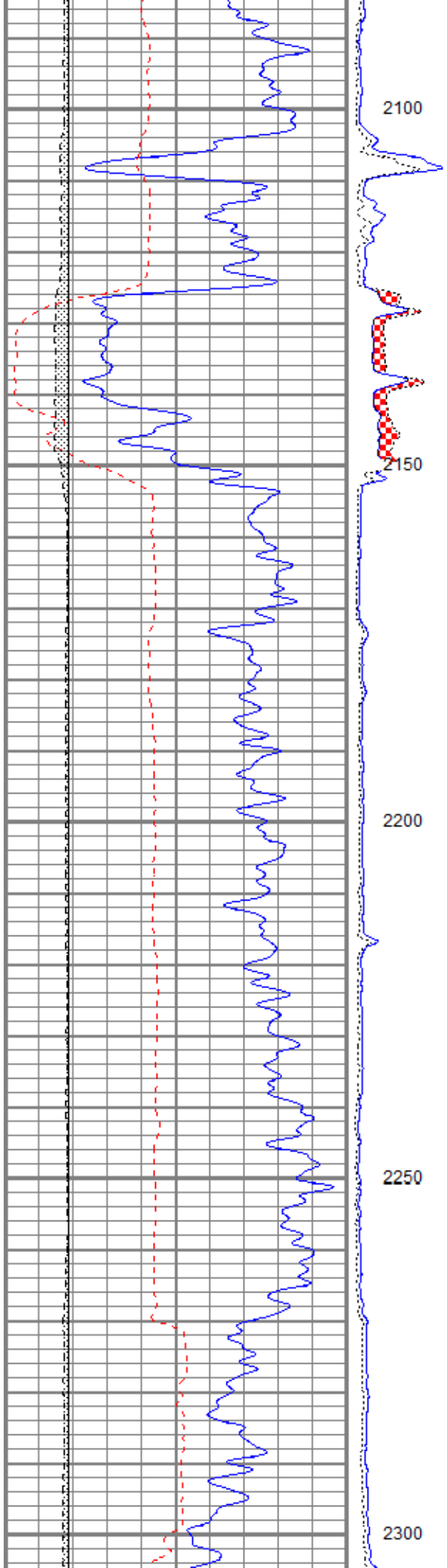


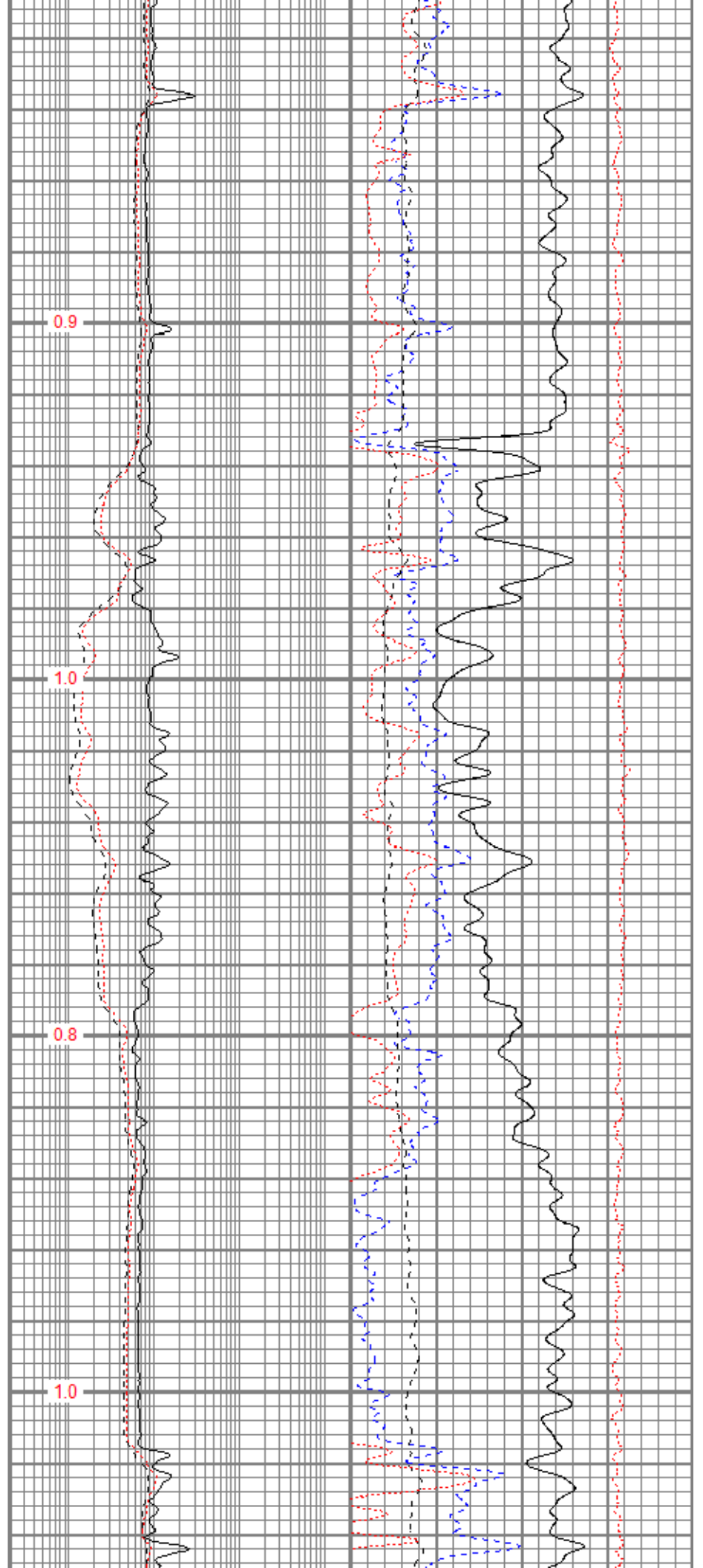
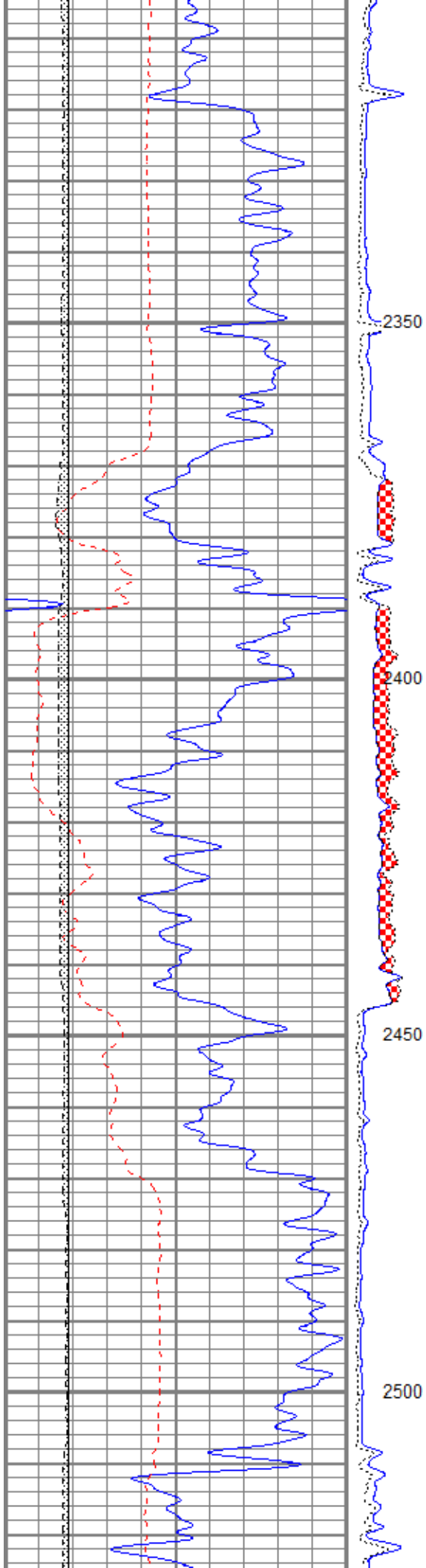


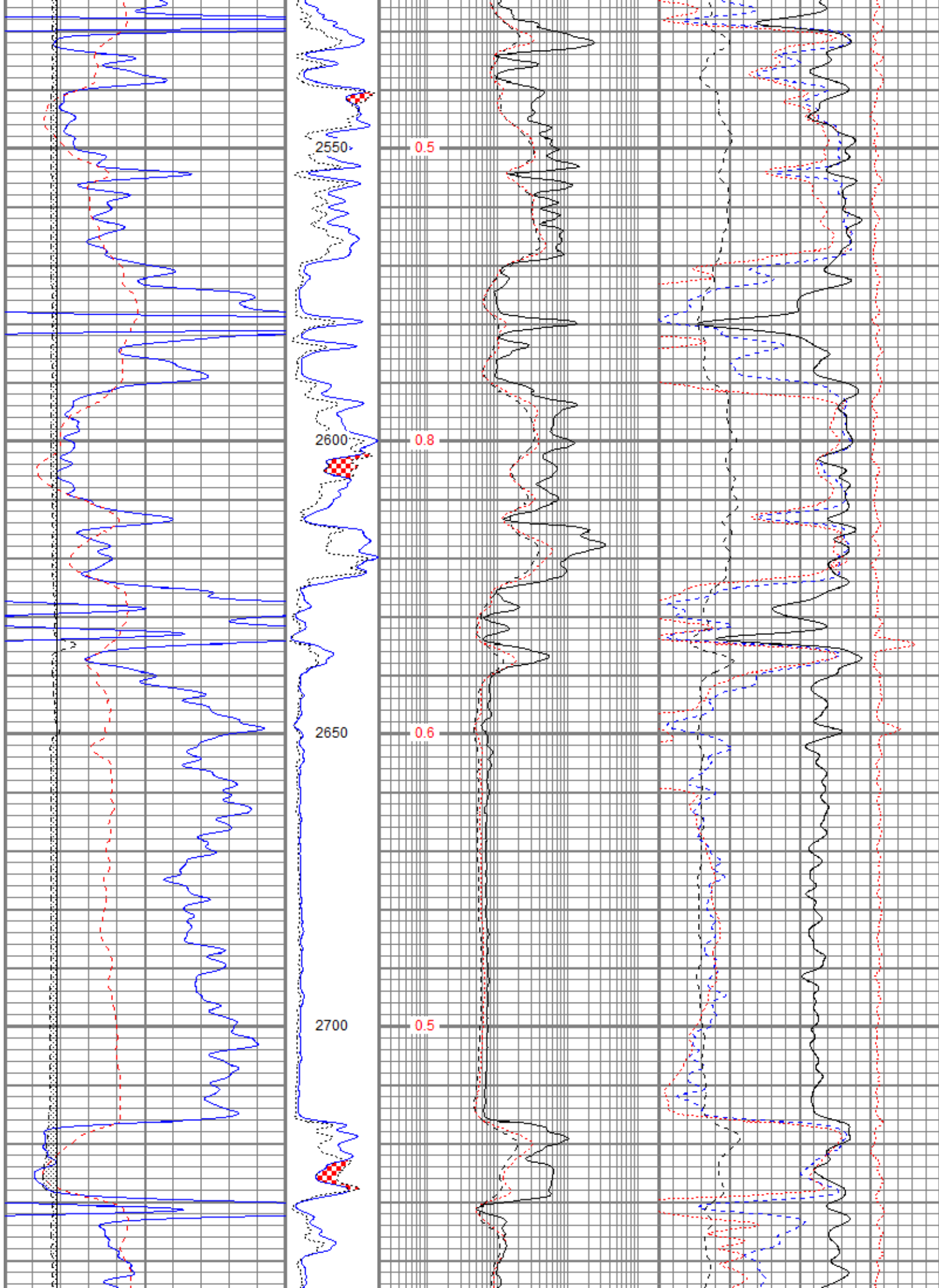


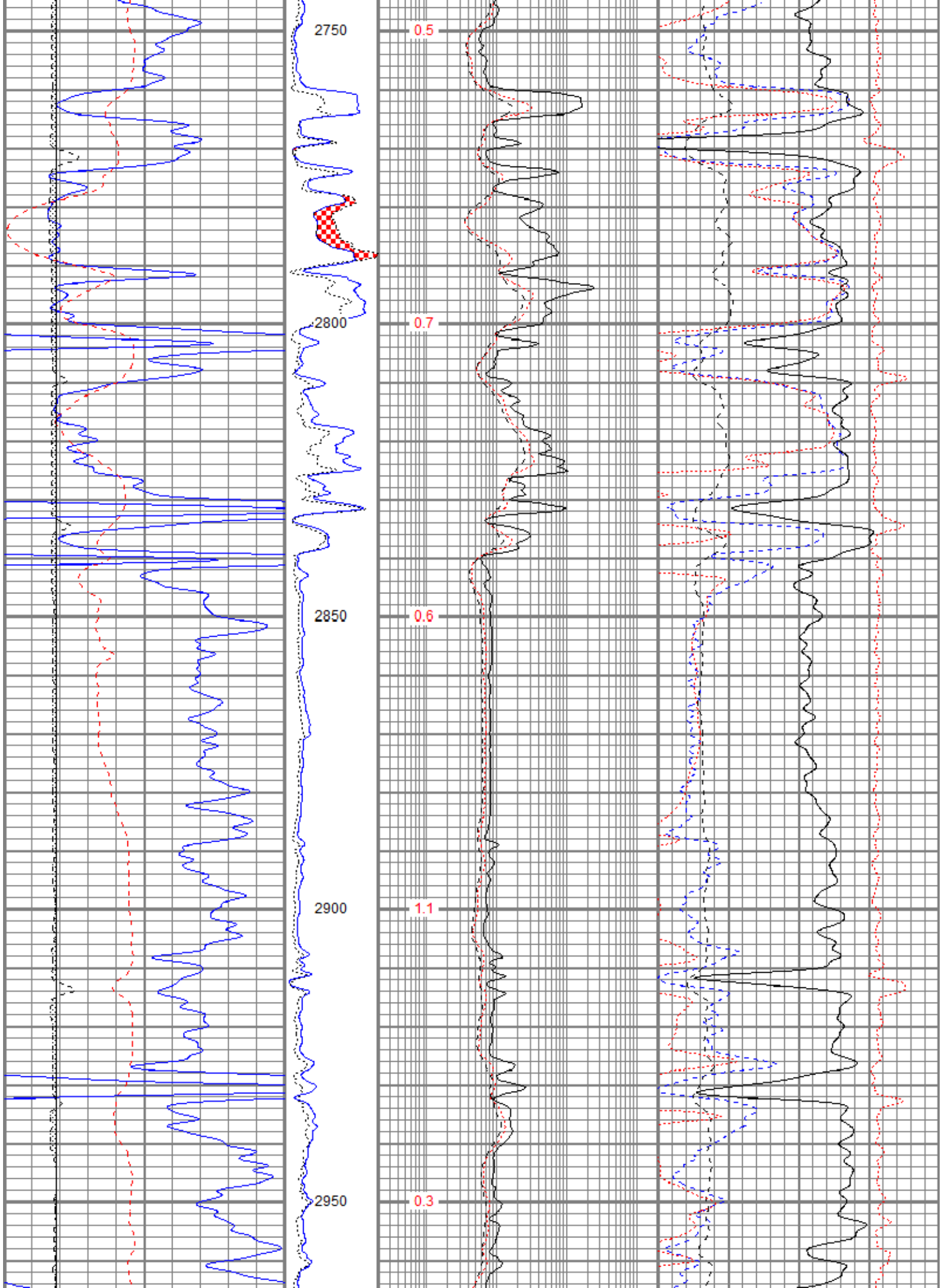


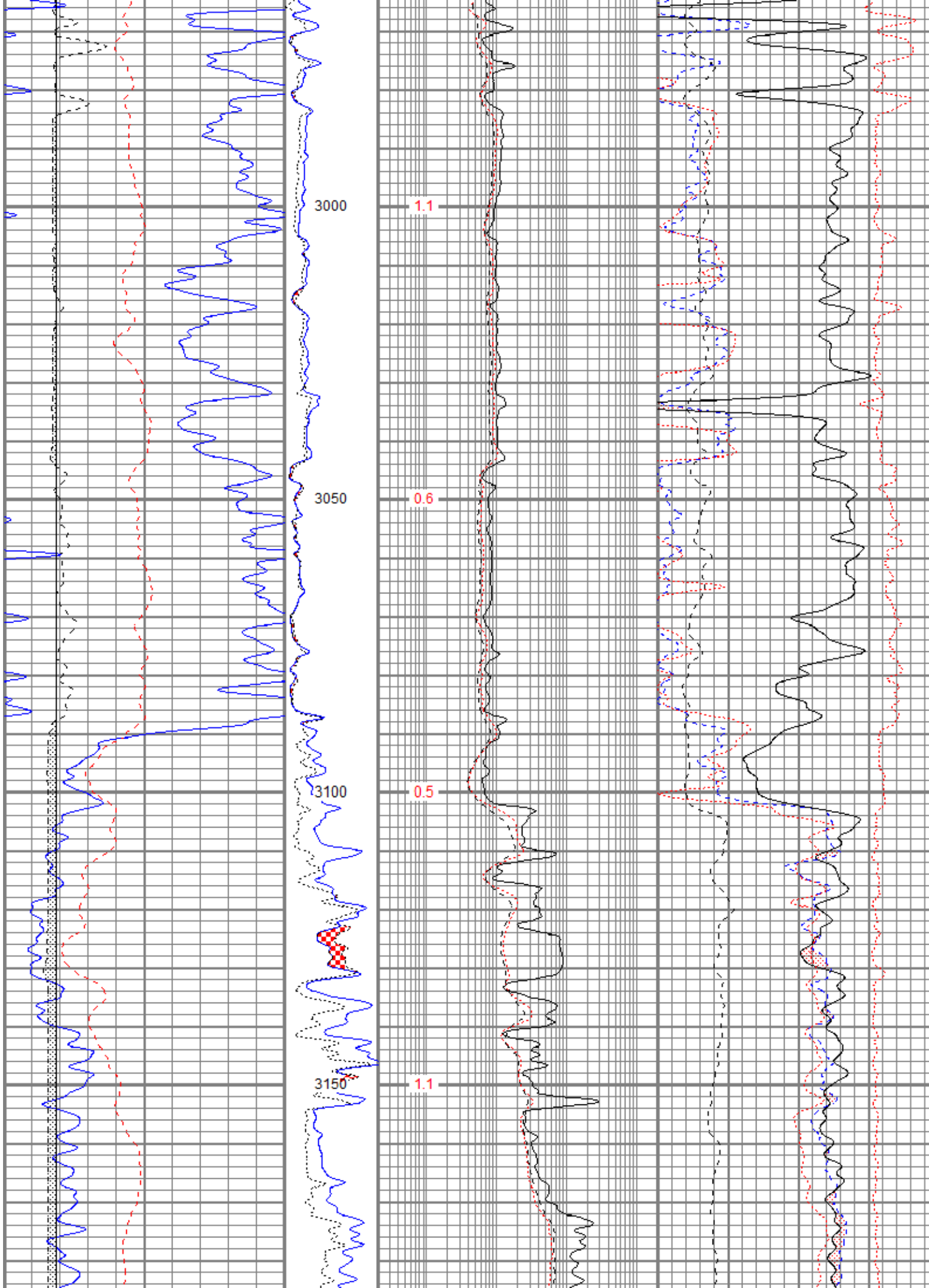


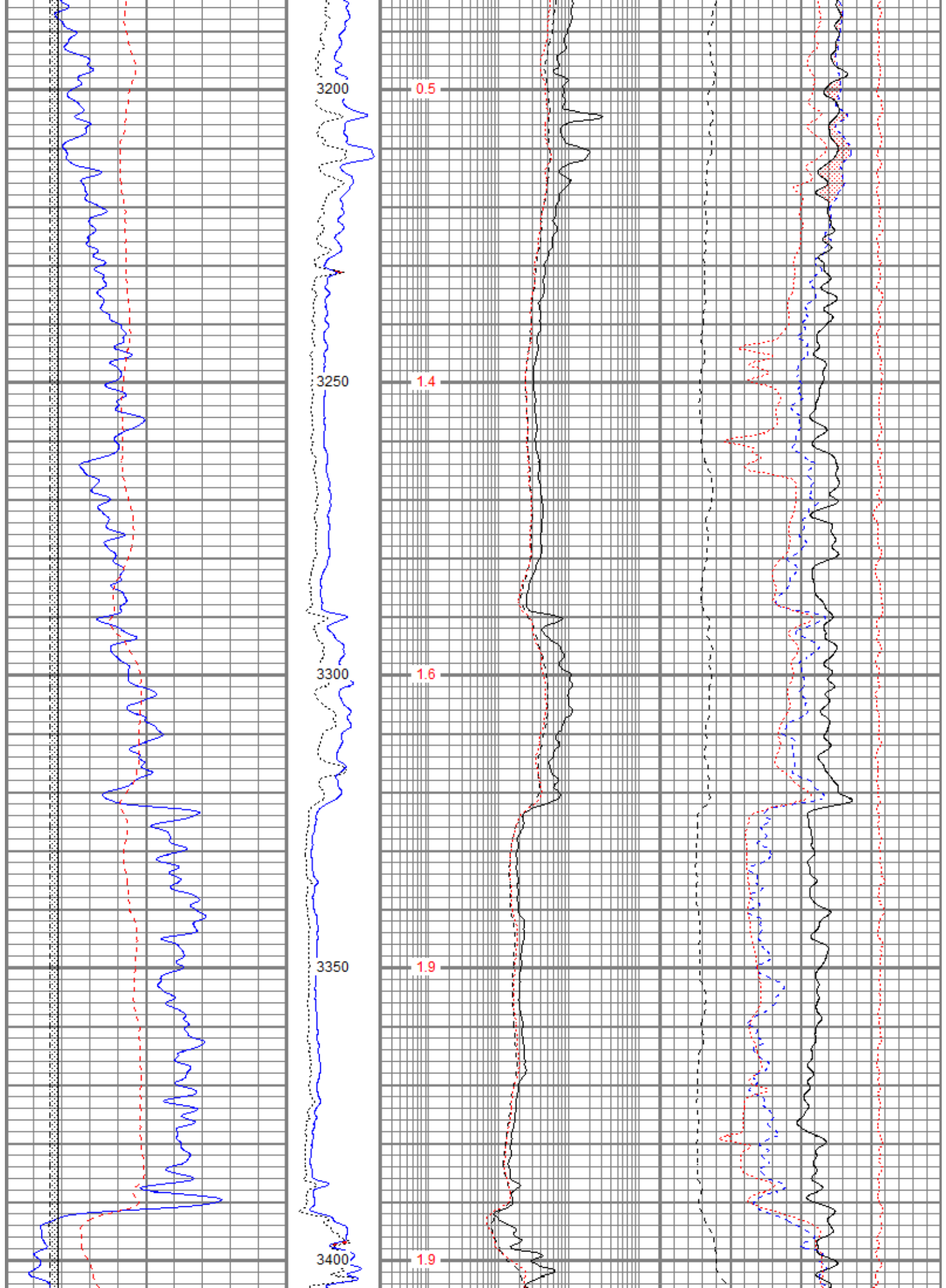


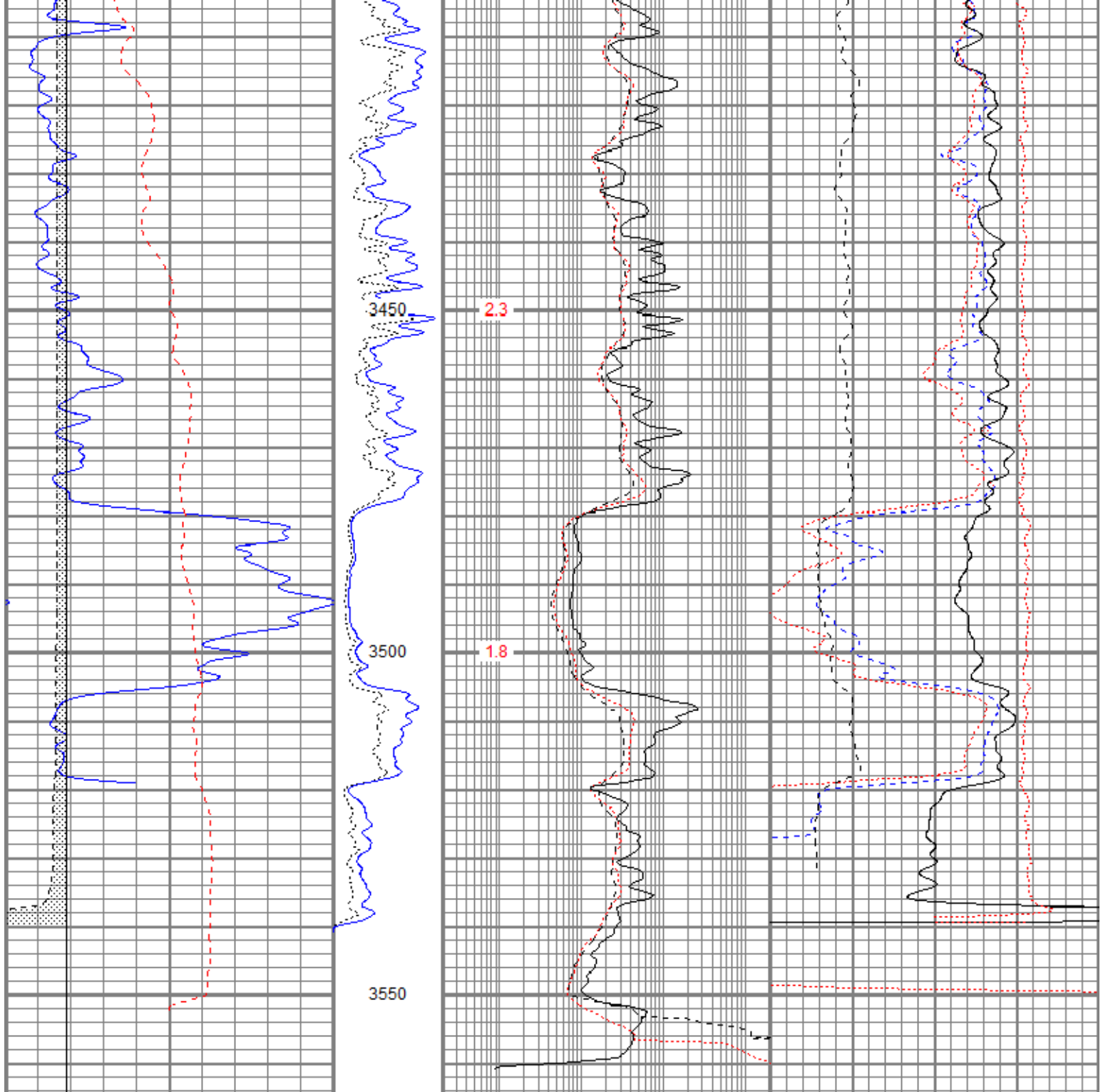












6	DCAL (in)	16	MN	0.2	RILD (Ohm-m)	2000	30	NPOR (pu)	-10	
0	GR (GAPI)	150	(Ohm-m)	0.2	RILM (Ohm-m)	2000	30	DPOR (pu)	-10	
-100	SP (mV)	100	0 20	0.2	RLL3 (Ohm-m)	2000	30	SPOR (pu)	-10	
150	GR (GAPI)	300	MI	DEVI (deg)			0	Pe (barn)	10	
6	BOREID (in)	16	(Ohm-m)						RHOC	
		0 20							-0.5 (g/cc)	0.5