



**MICRO  
RESISTIVITY  
LOG**

Company Taos Resources Operating Company LLC  
 Well Richardson #28-1  
 Field Unnamed  
 County Cowley  
 State Kansas

Company Taos Resources Operating Company LLC  
 Well Richardson #28-1  
 Field Unnamed  
 County Cowley State Kansas

Location: API #: 15 035 24677  
 790' FSL & 1190' FEL  
 SEC 28 TWP 32S RGE 5E  
 Permanent Datum Ground Level Elevation 1249'  
 Log Measured From KB 5' AGL  
 Drilling Measured From KB  
 Other Services  
 DIL  
 BHC  
 CDNL  
 Elevation  
 K.B. 1254'  
 D.F. 1253'  
 G.L. 1249'

Date	10-07-17
Run Number	Two
Depth Driller	3560'
Depth Logger	3561'
Bottom Logged Interval	3539'
Top Log Interval	350'
Casing Driller	8 5/8" @ 235'
Casing Logger	235'
Bit Size	7 7/8"
Type Fluid in Hole	Chemical
Density / Viscosity	9.5/40
PH / Fluid Loss	10.0/7.6
Source of Sample	Pit
Rm @ Meas. Temp	1.20@76degf
Rmf @ Meas. Temp	0.96@76degf
Rmc @ Meas. Temp	1.54@76degf
Source of Rmf / Rmc	Calculated
Rm @ BHT	0.78@117degf
Time Circulation Stopped	9:45 p.m.
Time Logger on Bottom	2:40 a.m.
Maximum Recorded Temperature	117degf
Equipment Number	T-729
Location	Hays, KS
Recorded By	C.Patterson
Witnessed By	Mr. Mike Pressnall

<<< Fold Here >>>

All interpretations are opinions based on inferences from electrical or other measurements and we cannot and do not guarantee the accuracy or correctness of any interpretation, and we shall not, except in the case of gross or willful negligence on our part, be liable or responsible for any loss, costs, damages, or expenses incurred or sustained by anyone resulting from any interpretation made by any of our officers, agents or employees. These interpretations are also subject to our general terms and conditions set out in our current Price Schedule.

**Comments**

East of Winfield(Main St. and 160 Hwy) 6.5 mi. to 151st rd., 1 south to 172nd Rd.,  
 1/2 West, North into Location

Thank you for using Gemini Wireline  
 785-625-1182

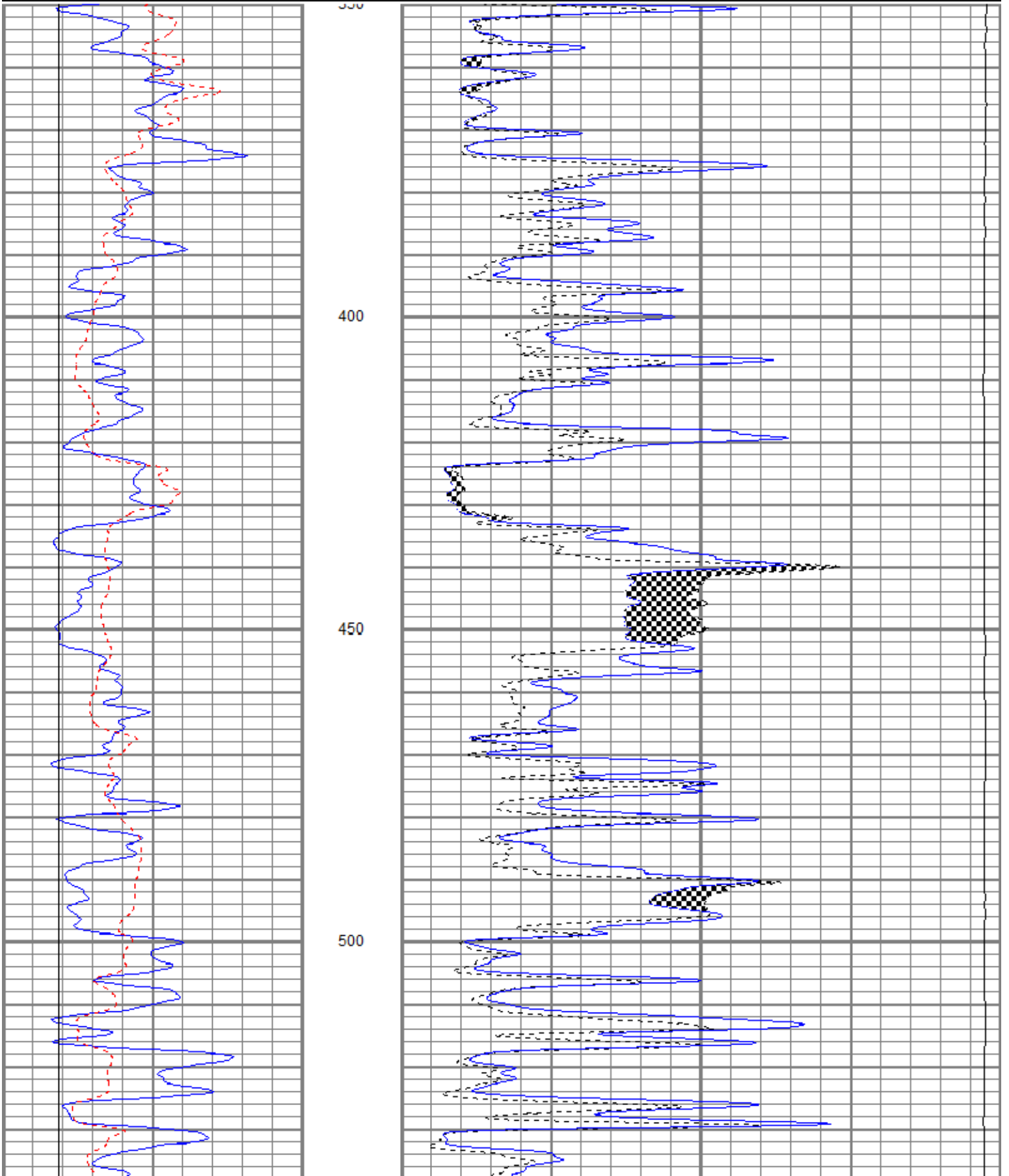


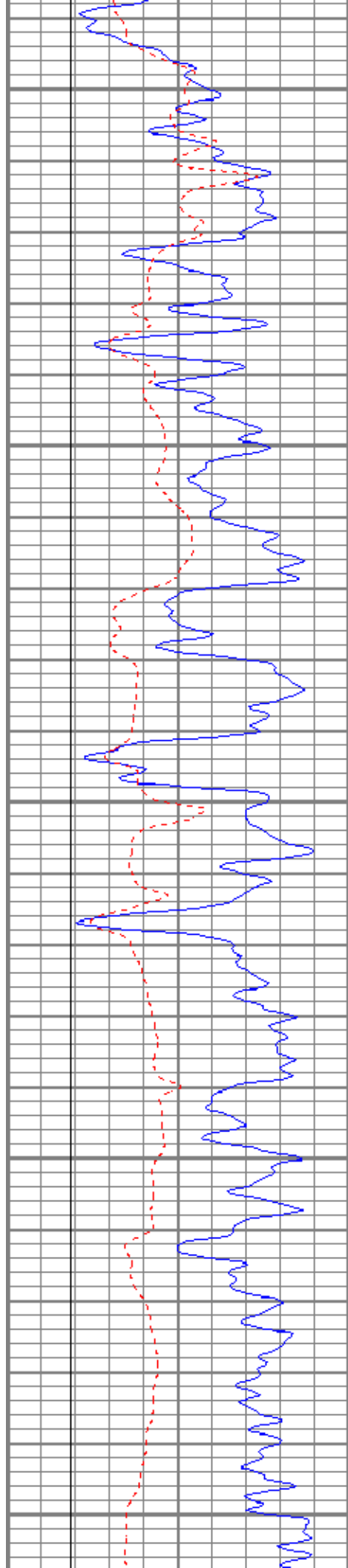
**MAIN PASS**

Database File    trorichardson28-1oh.db  
 Dataset Pathname   pass4  
 Presentation Format   kml  
 Dataset Creation    Sun Oct 08 02:49:28 2017  
 Charted by         Depth in Feet scaled 1:240

0	GR (GAPI)	150
6	MCAL (in)	16
6	BOREID (in)	16

0	MN 2" (Ohm-m)	20
0	MI 1" (Ohm-m)	20
10000	LTEN (lb)	0





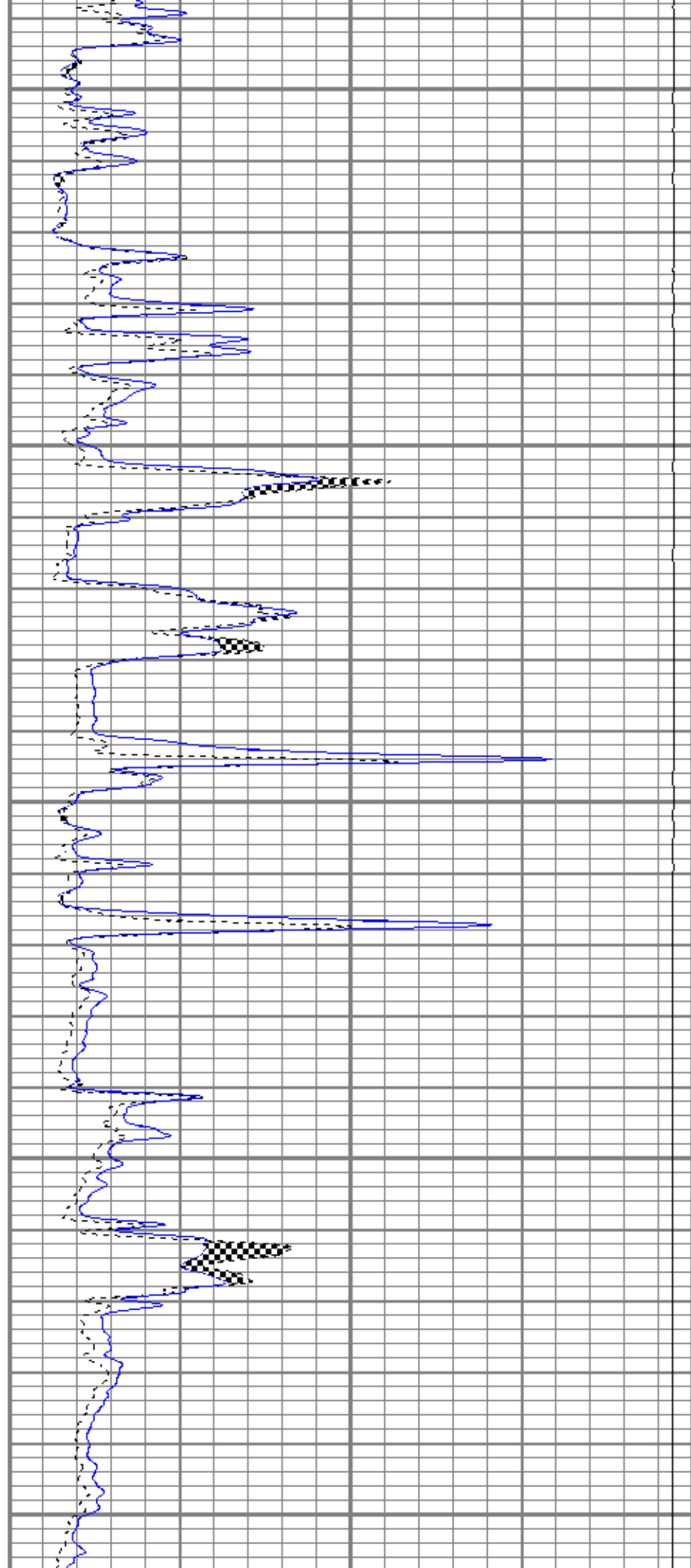
550

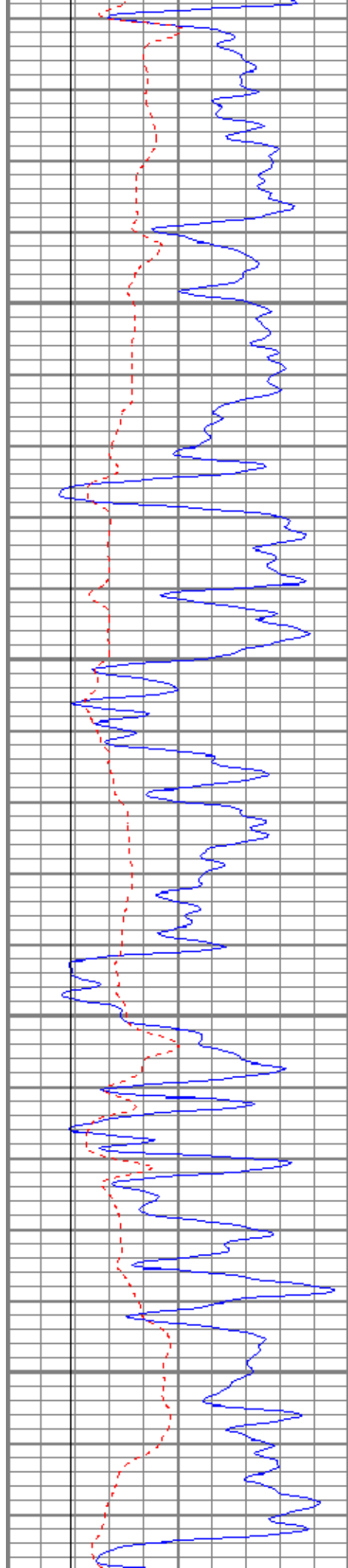
600

650

700

750



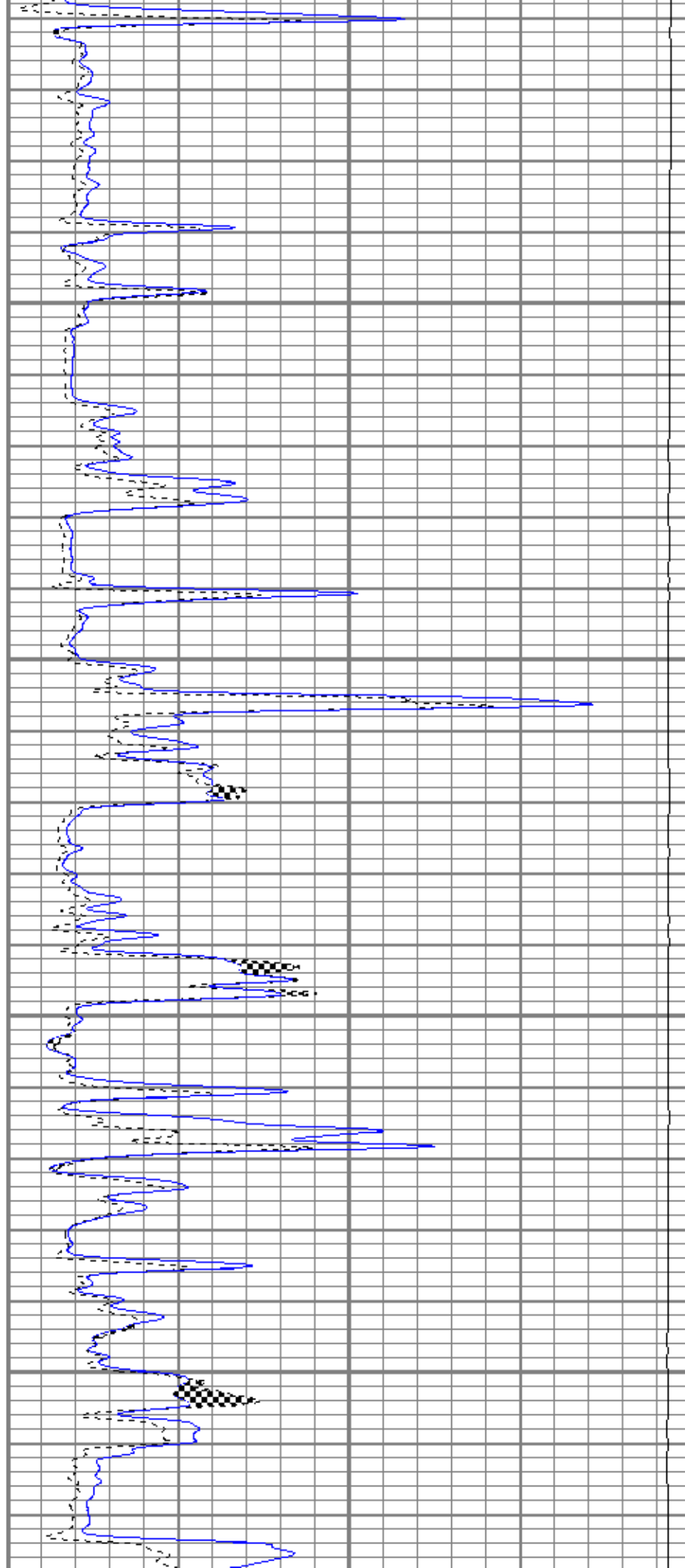


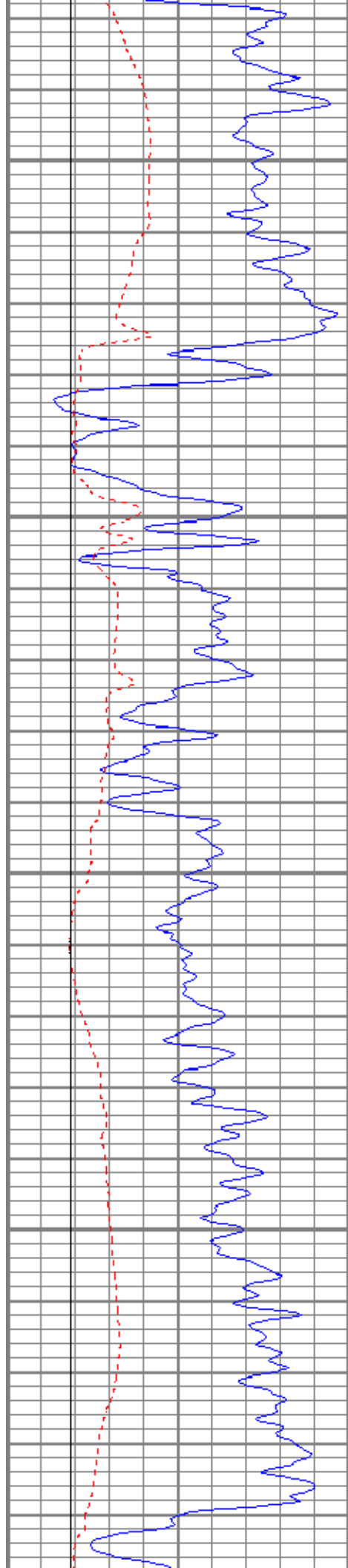
800

850

900

950



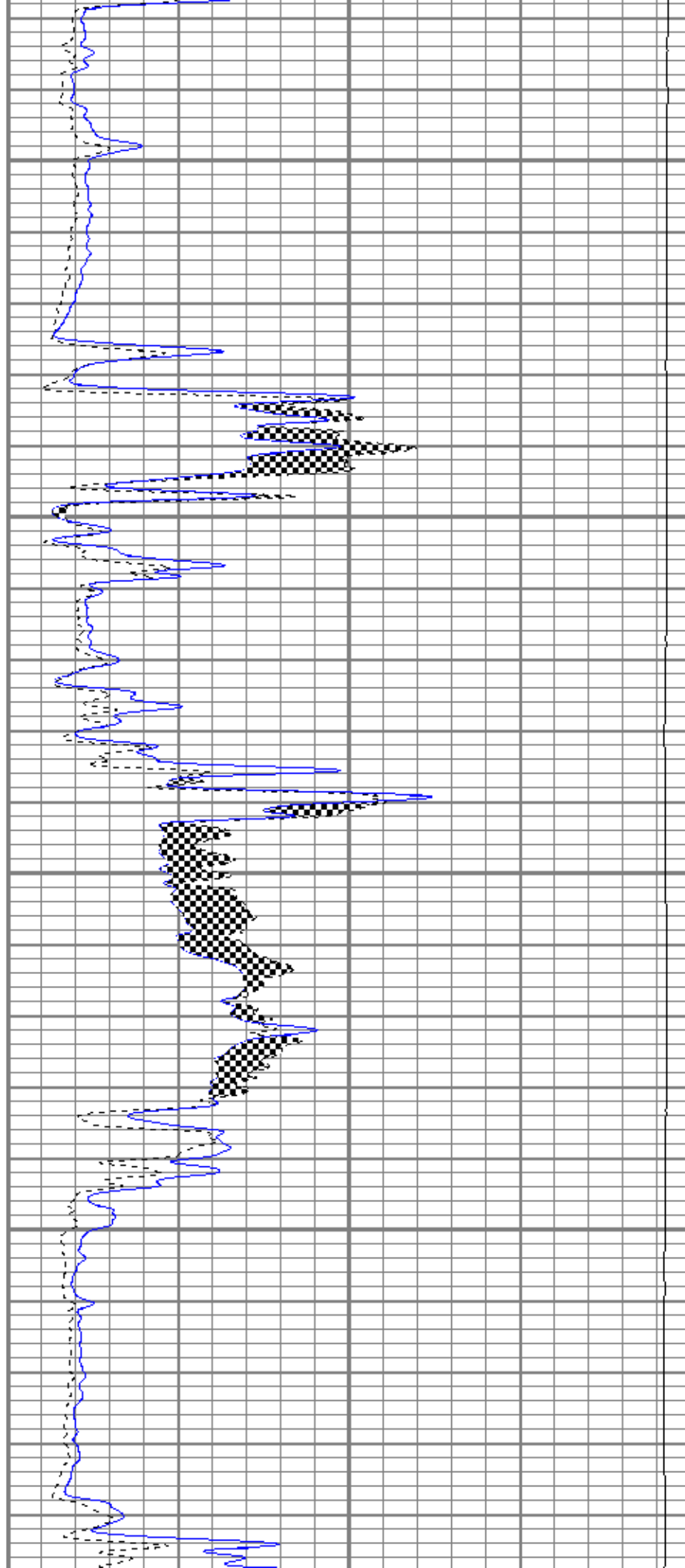


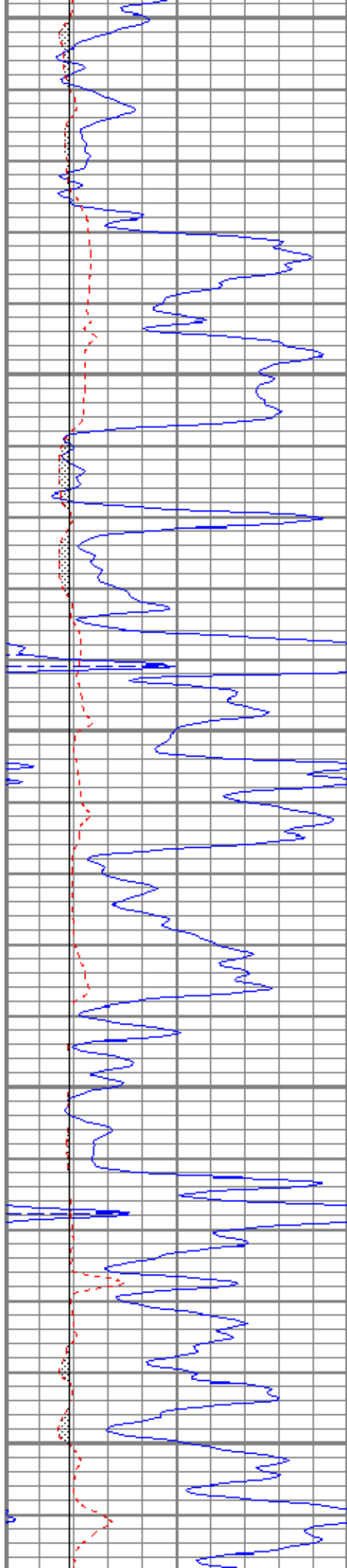
1000

1050

1100

1150





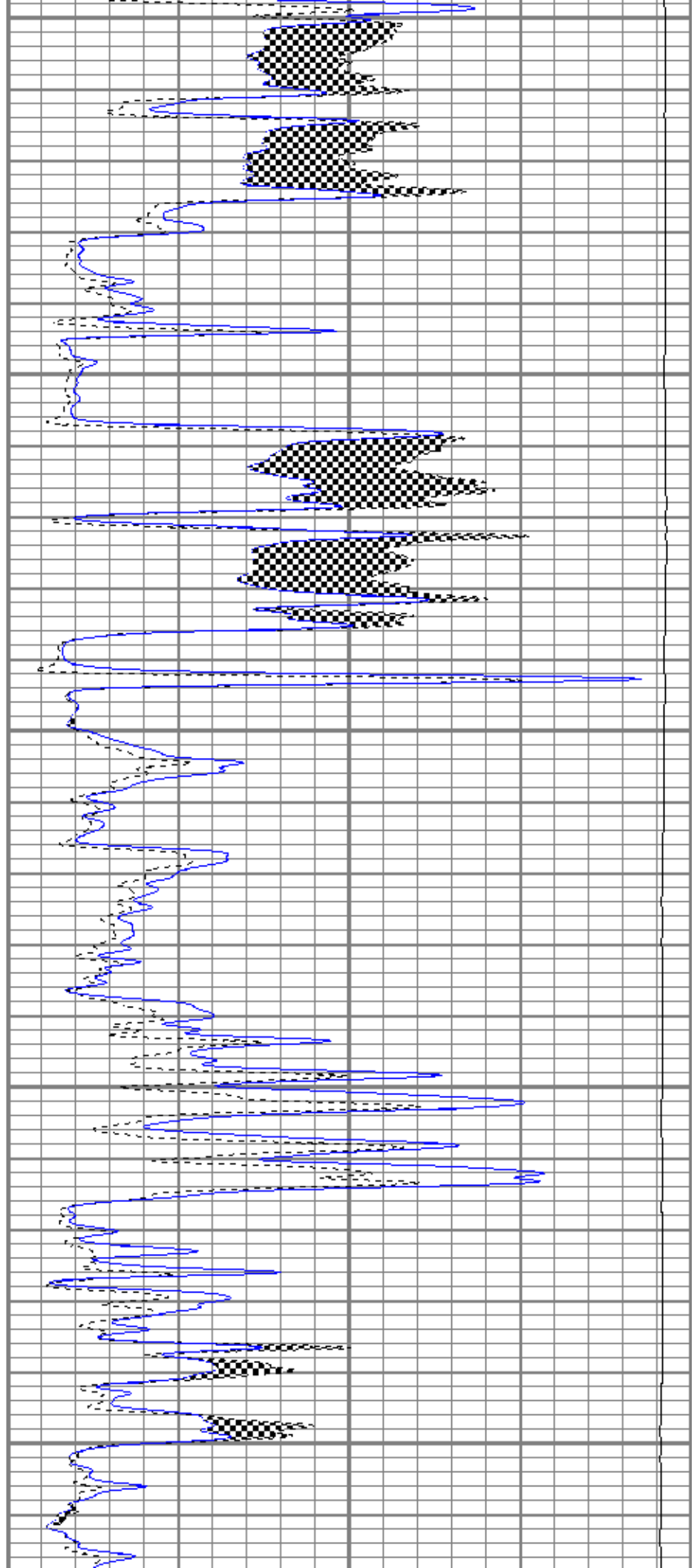
1200

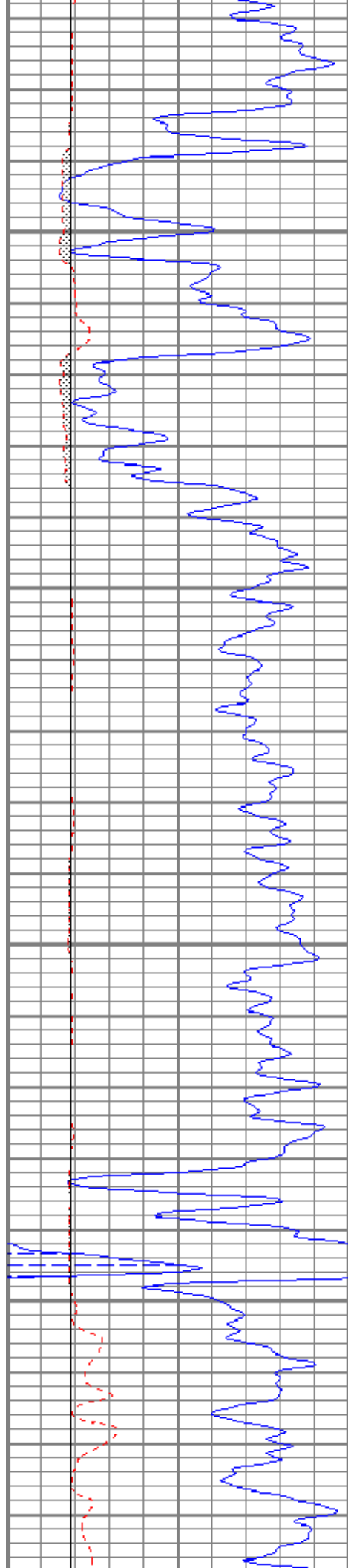
1250

1300

1350

1400



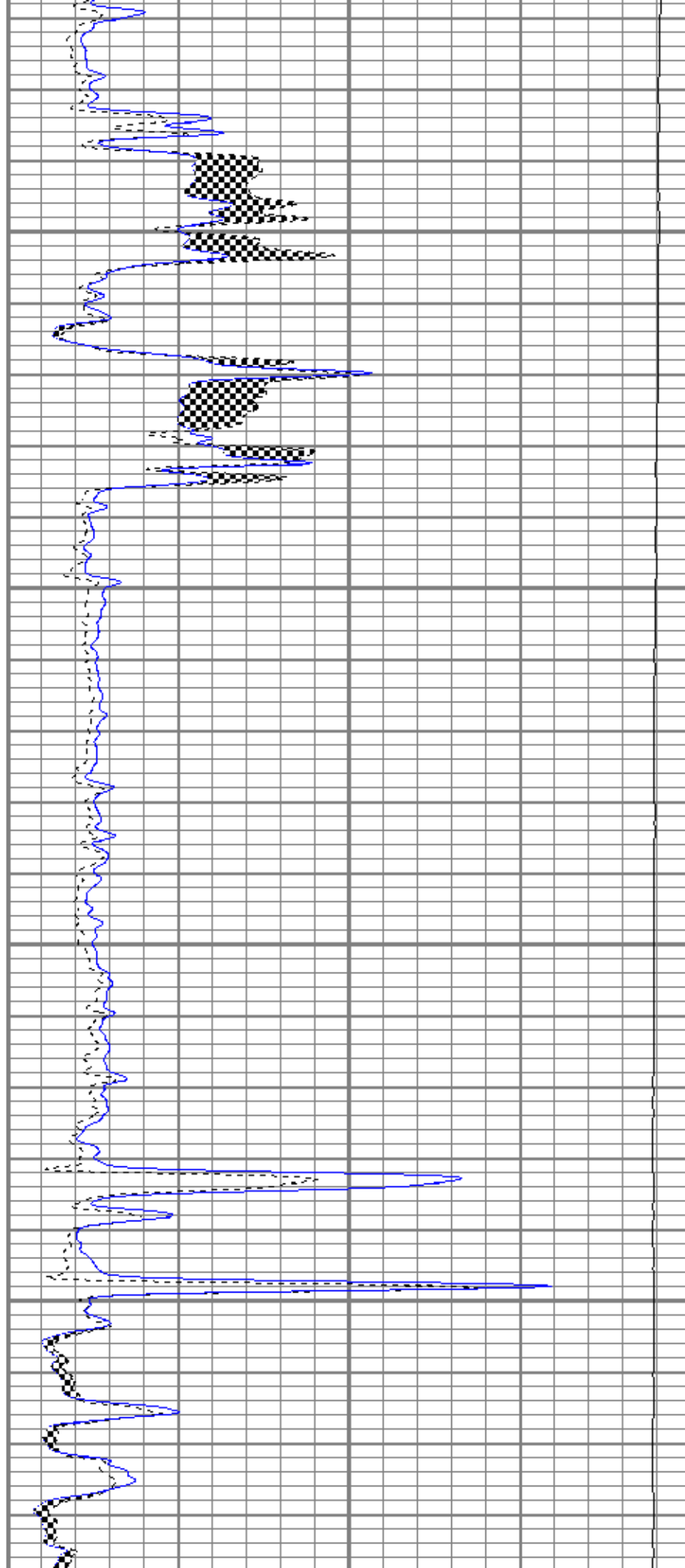


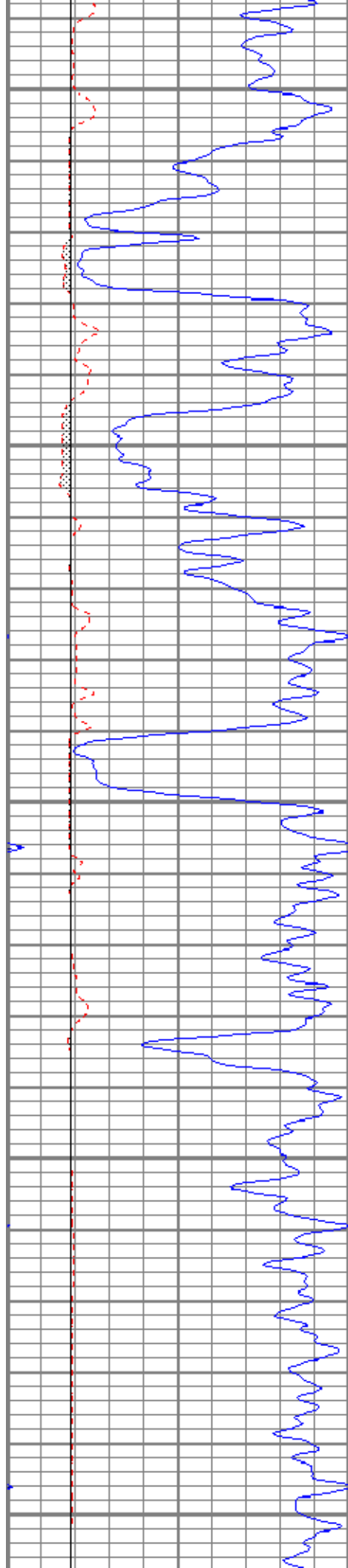
1450

1500

1550

1600





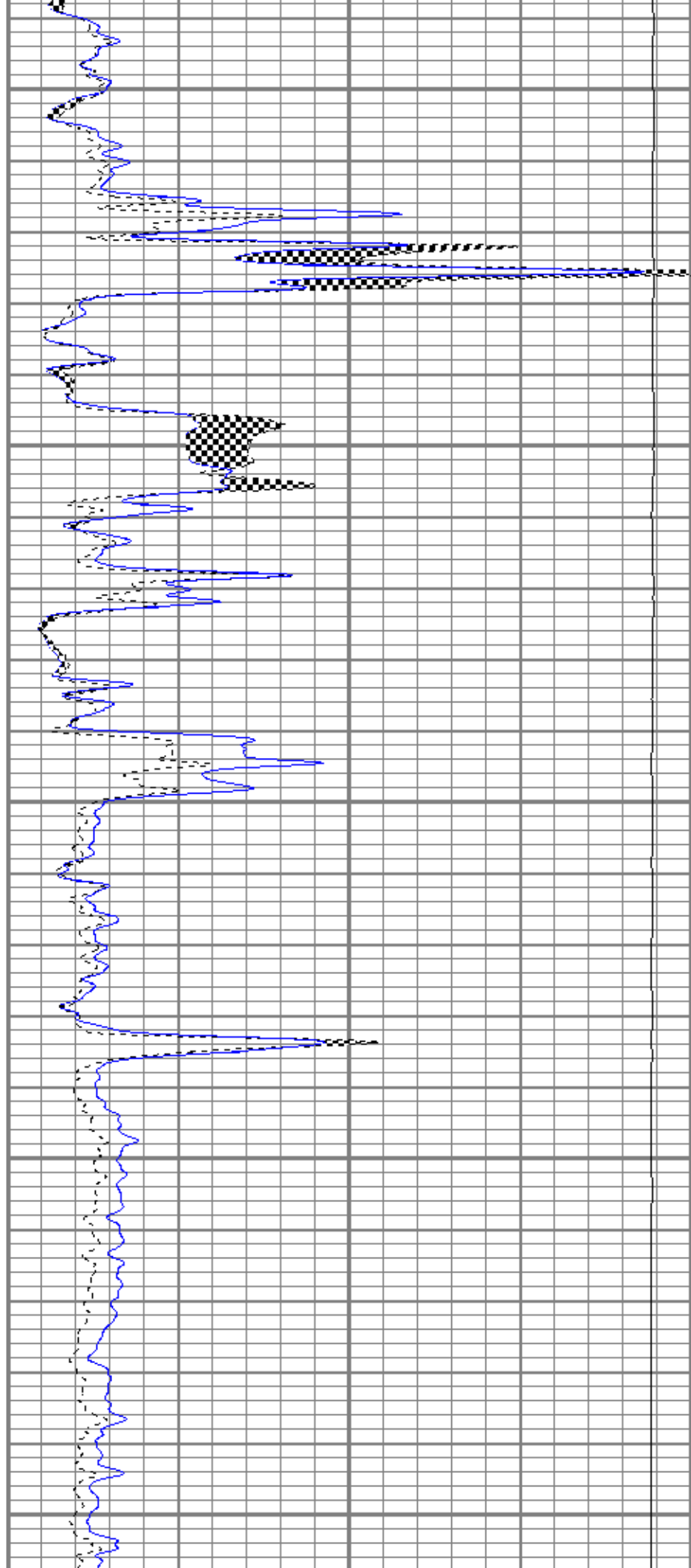
1650

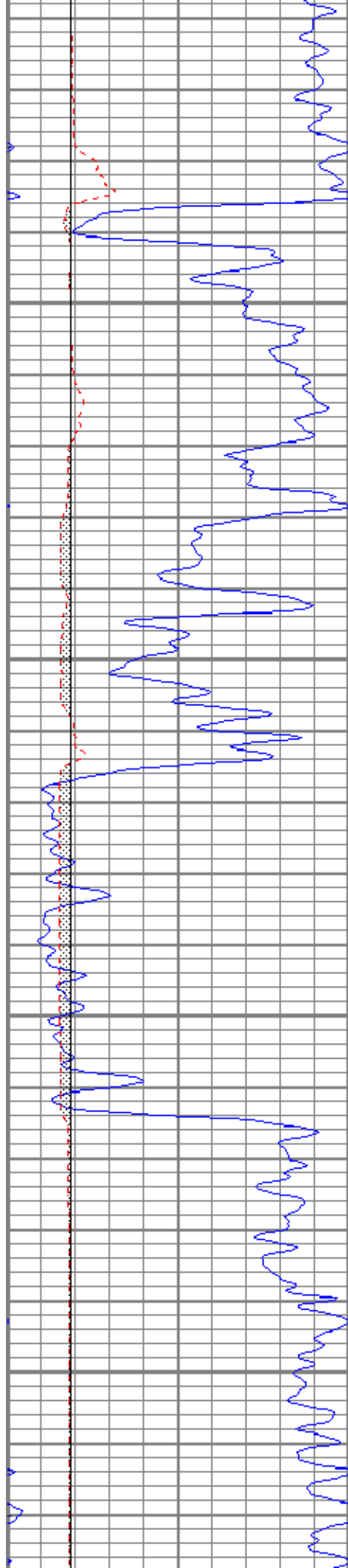
1700

1750

1800

1850



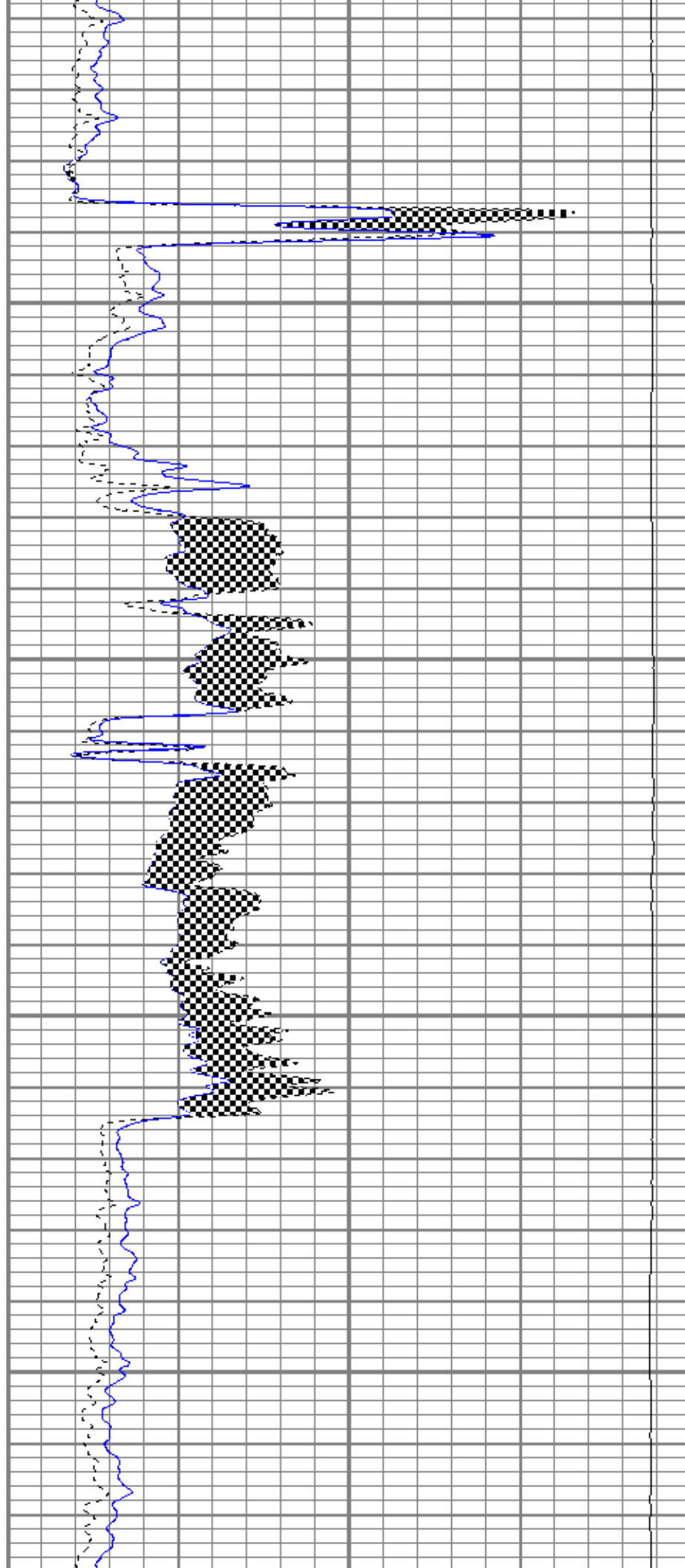


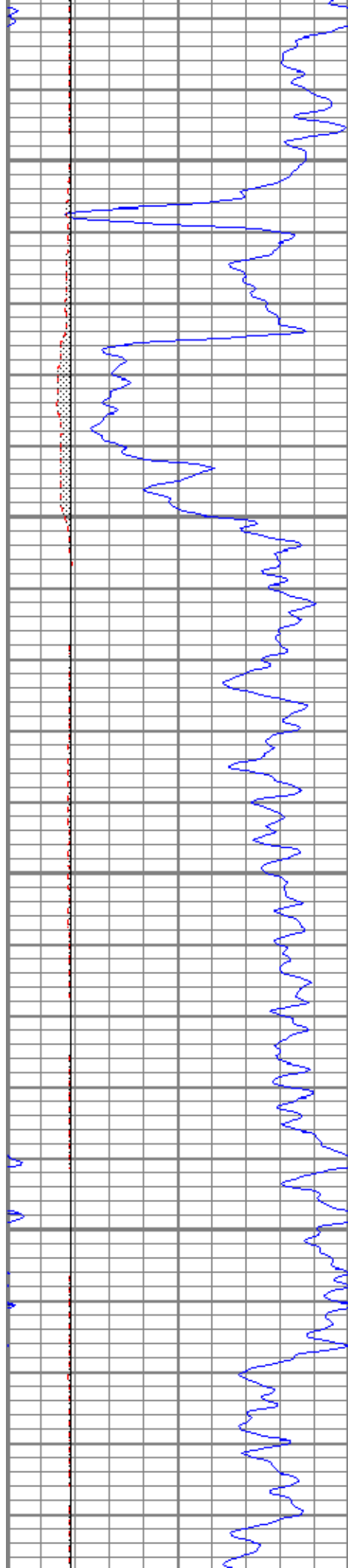
1900

1950

2000

2050



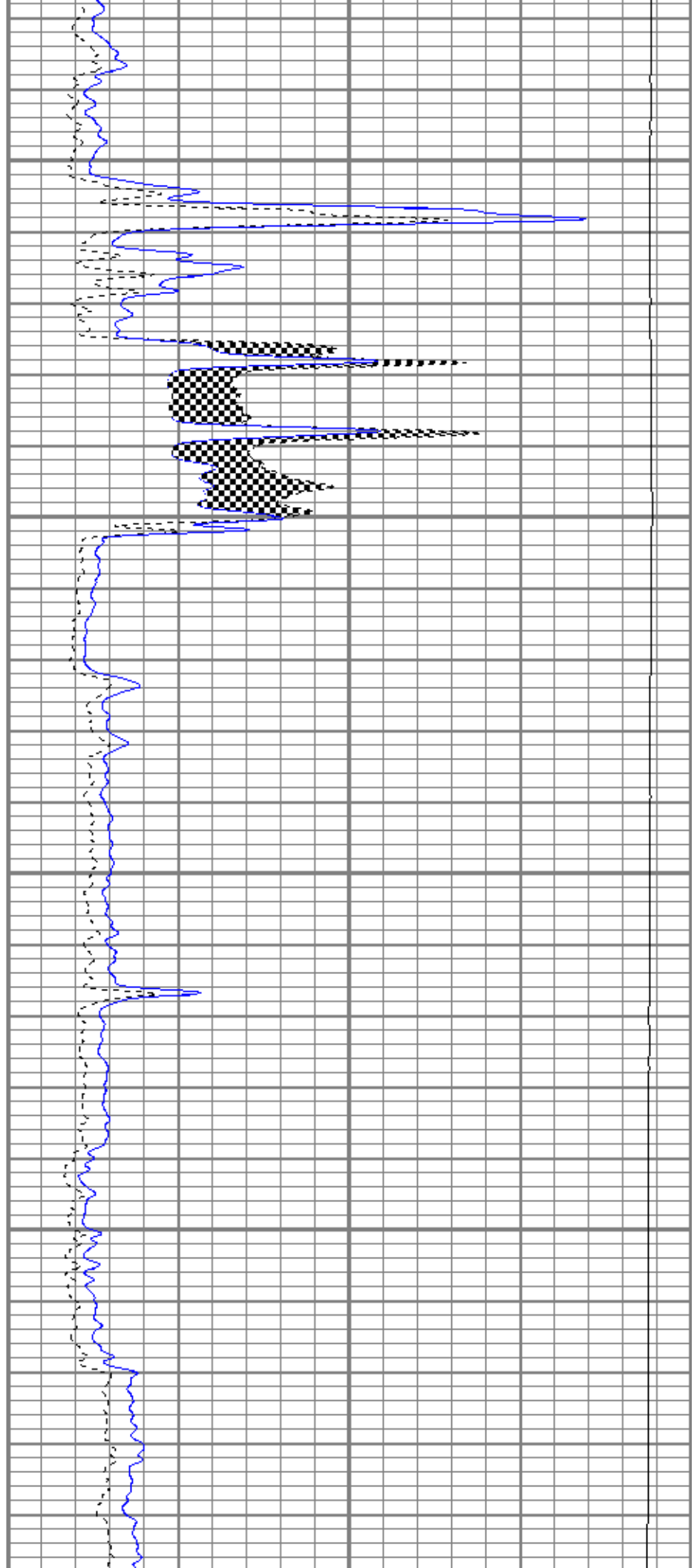


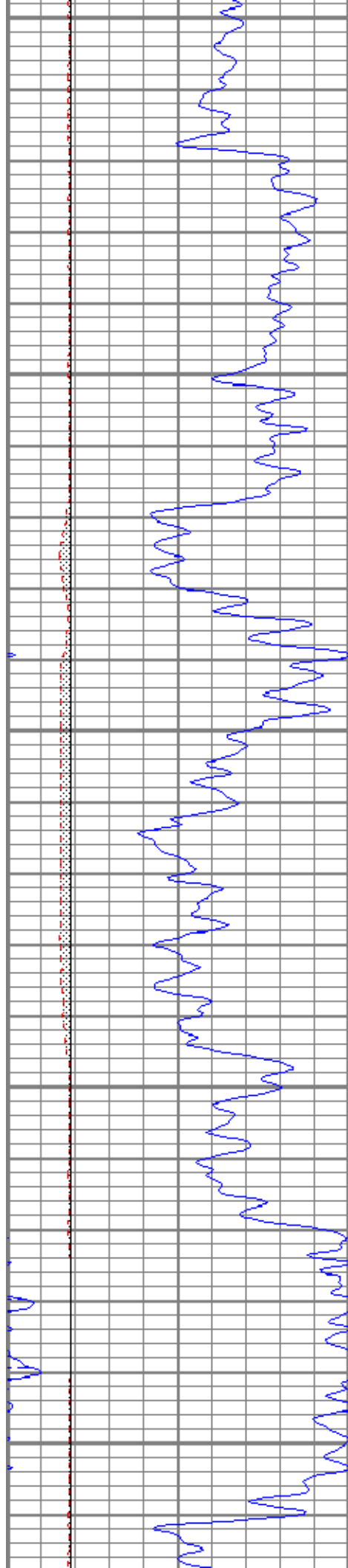
2100

2150

2200

2250





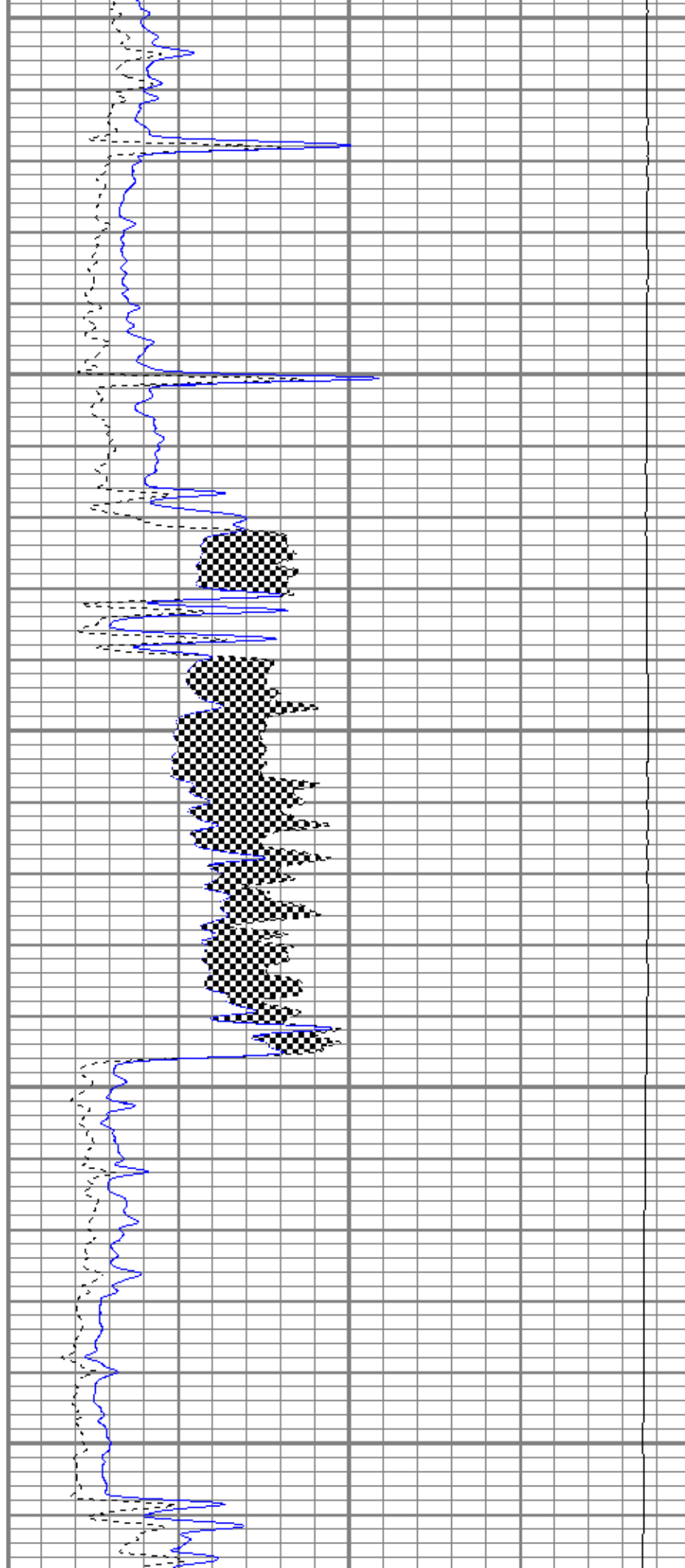
2300

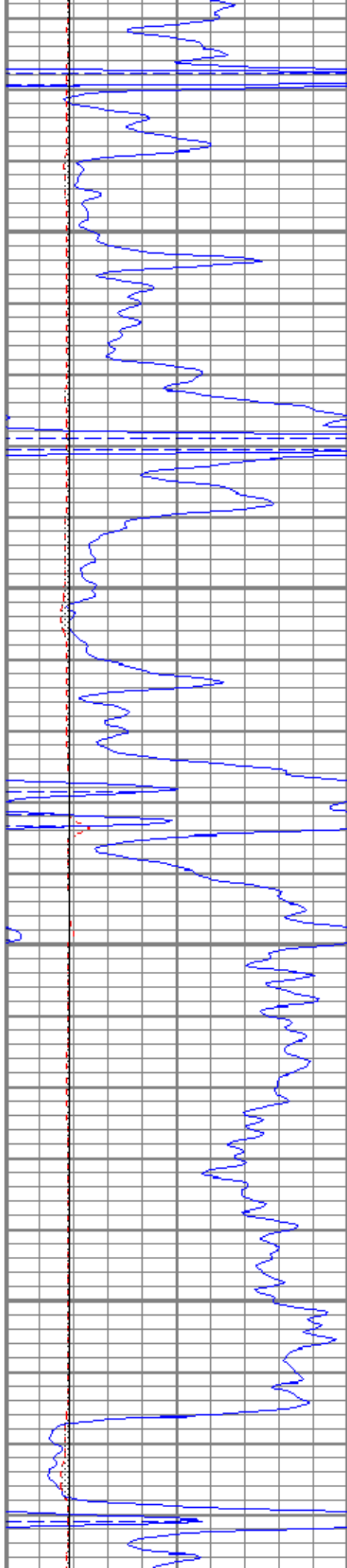
2350

2400

2450

2500



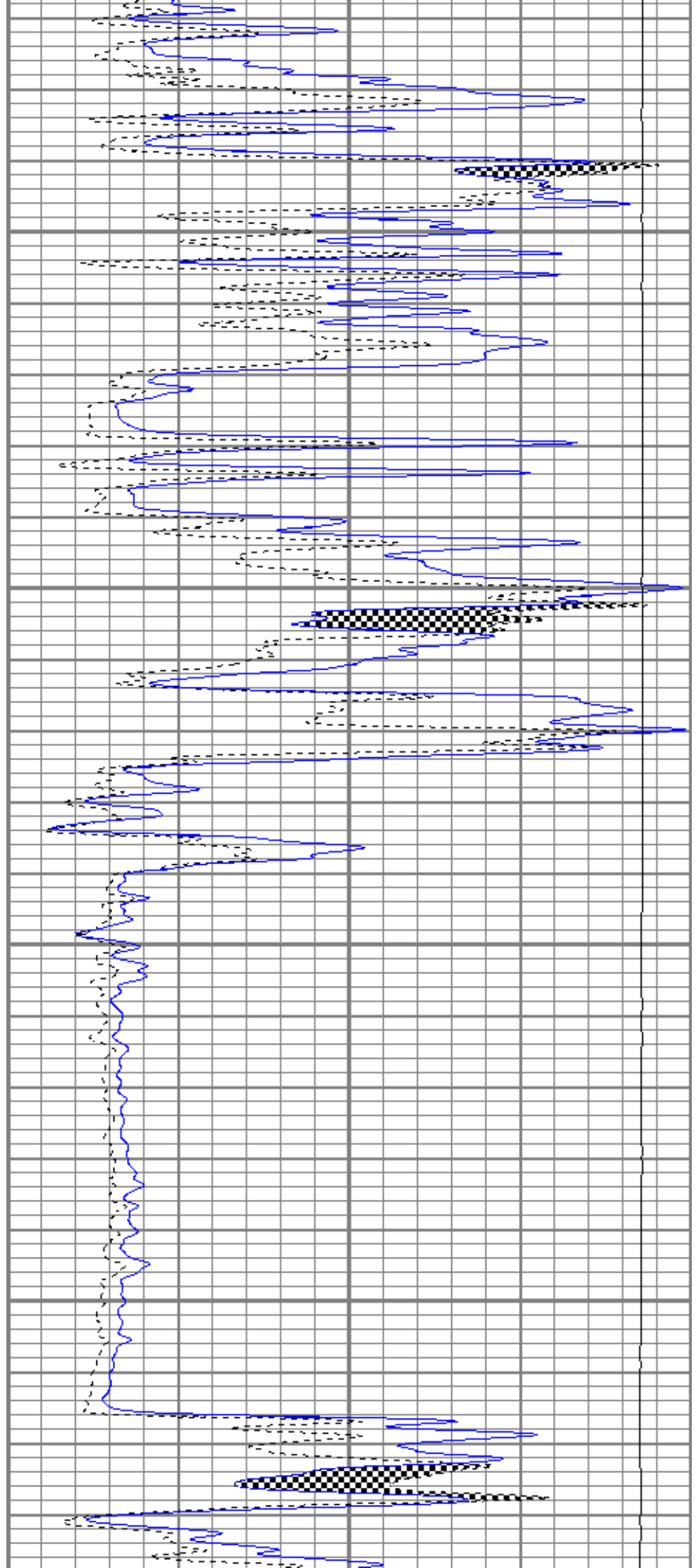


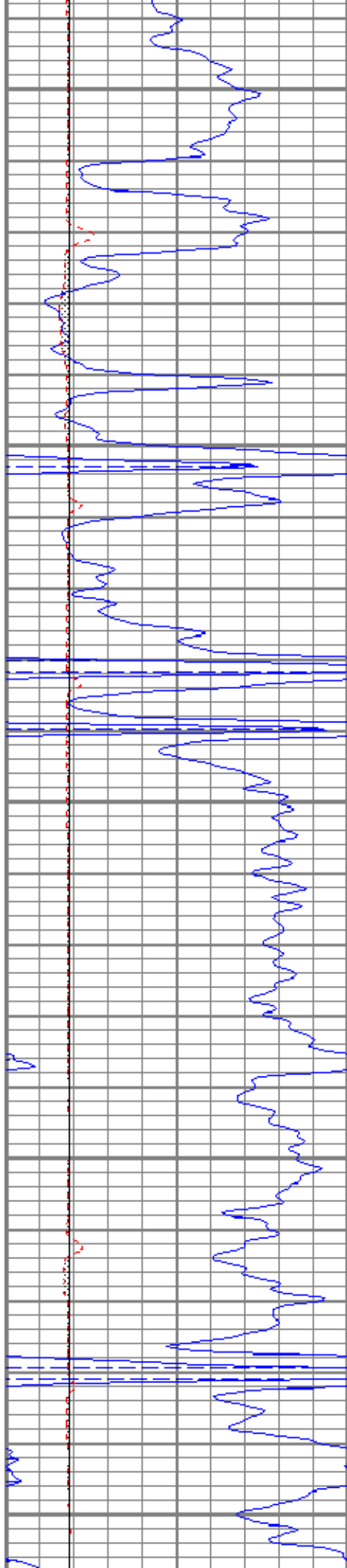
2550

2600

2650

2700





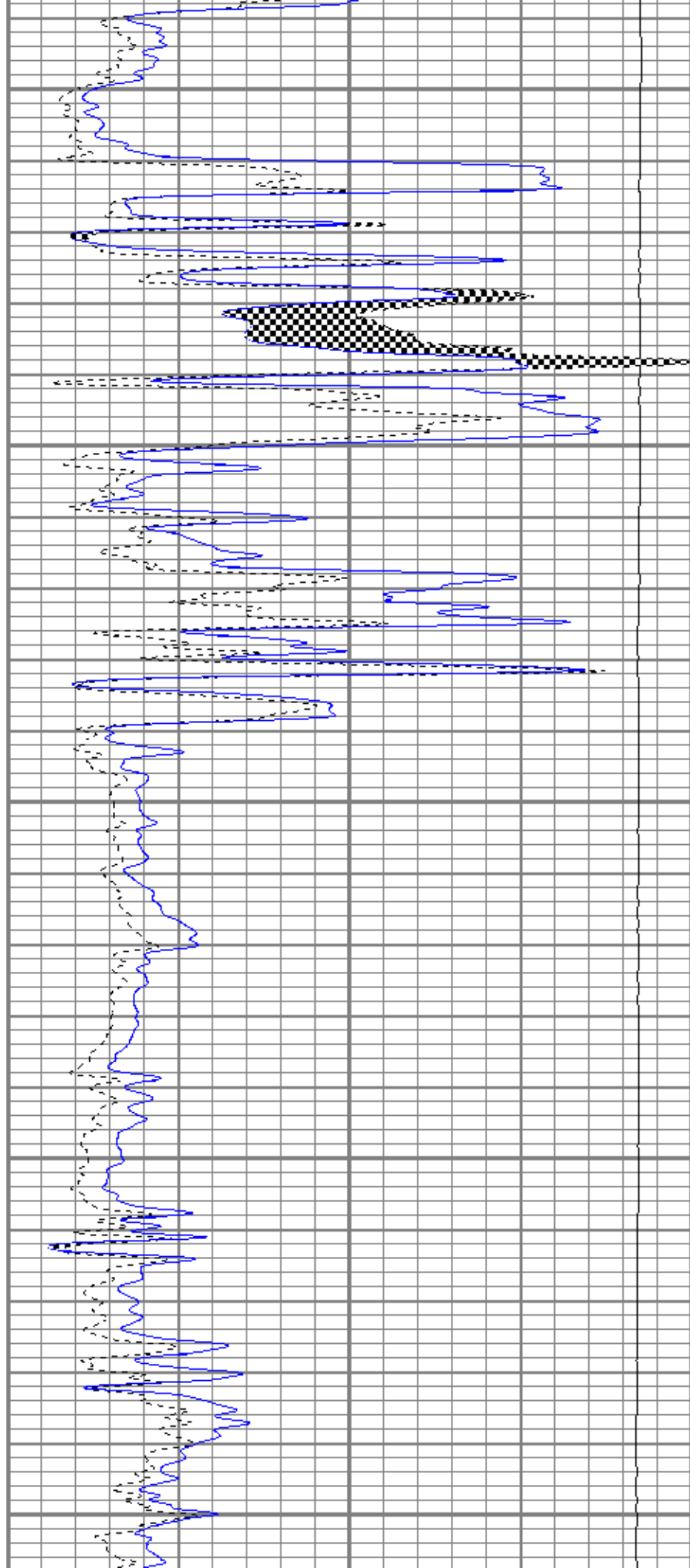
2750

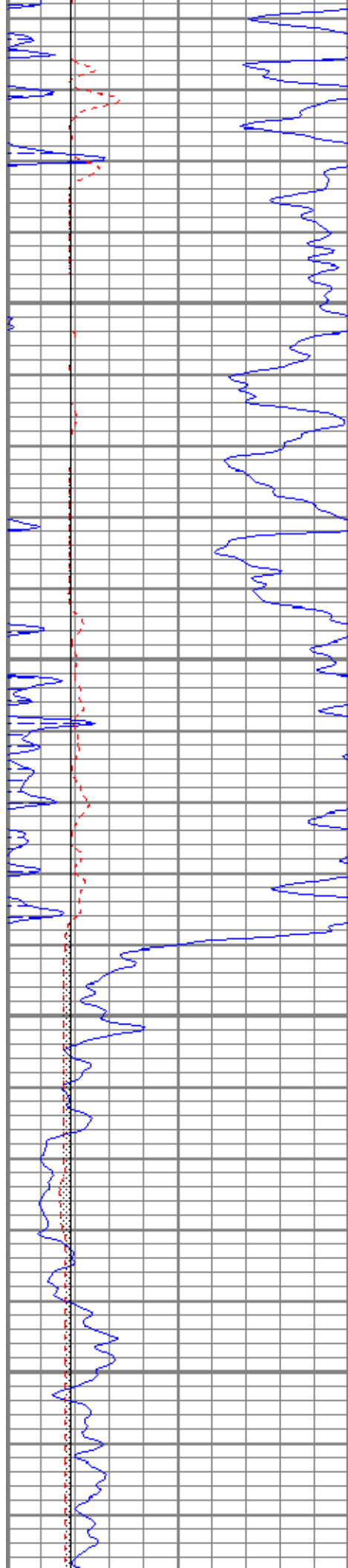
2800

2850

2900

2950



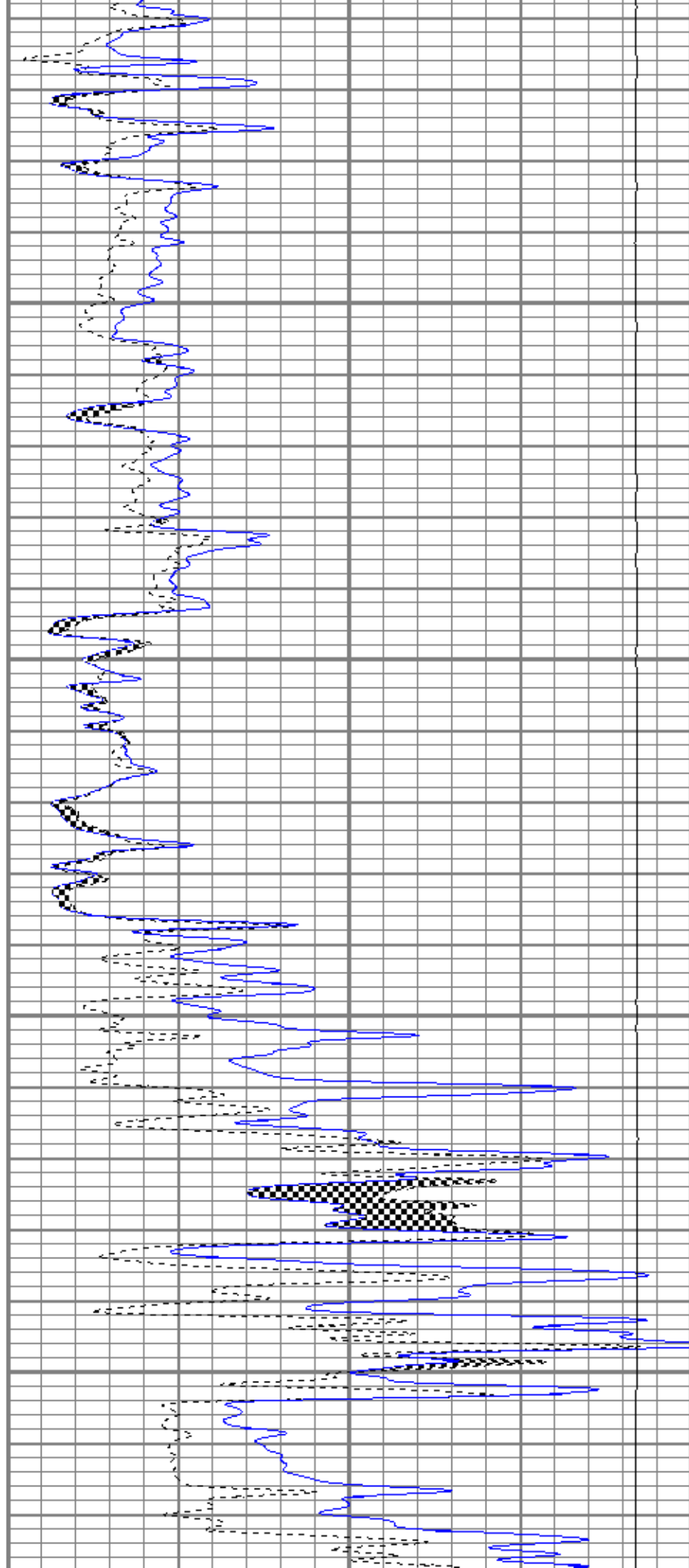


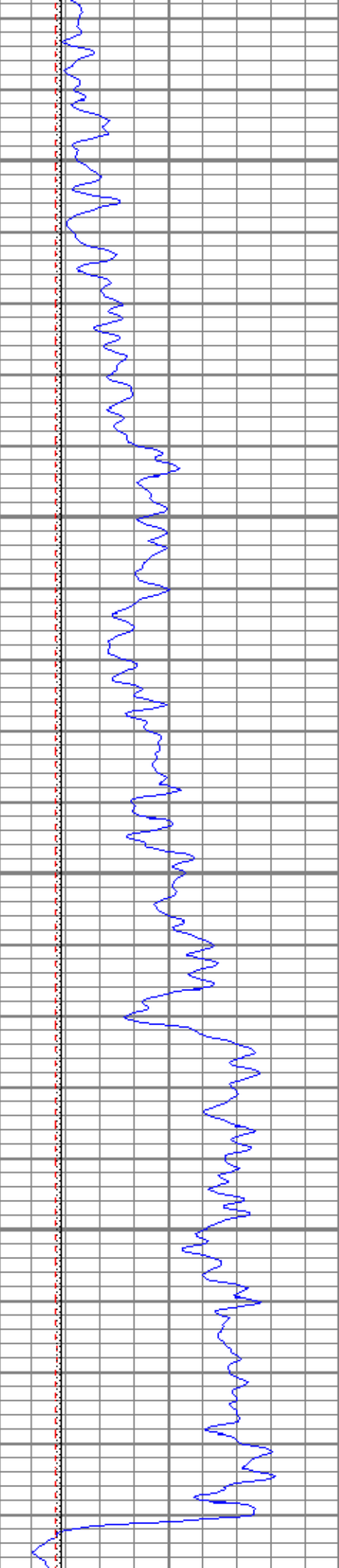
3000

3050

3100

3150



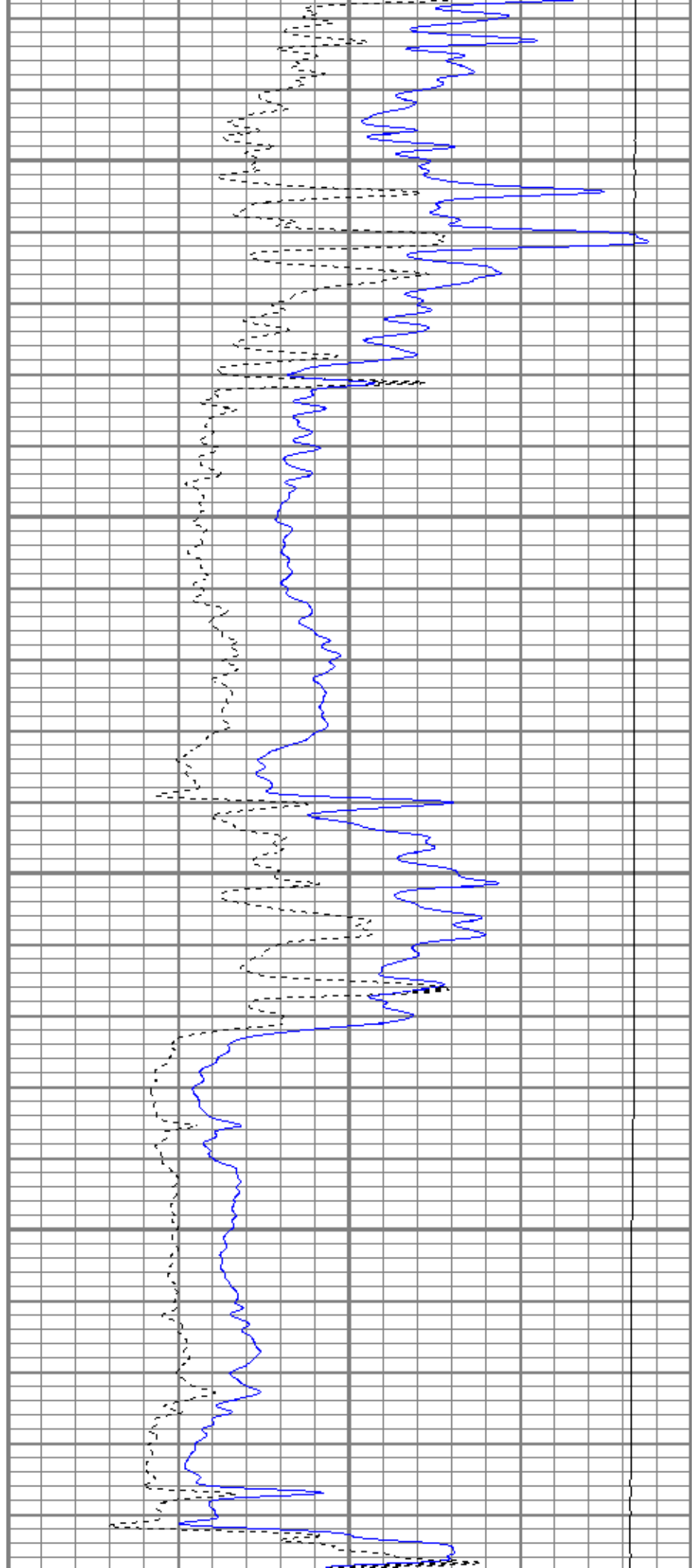


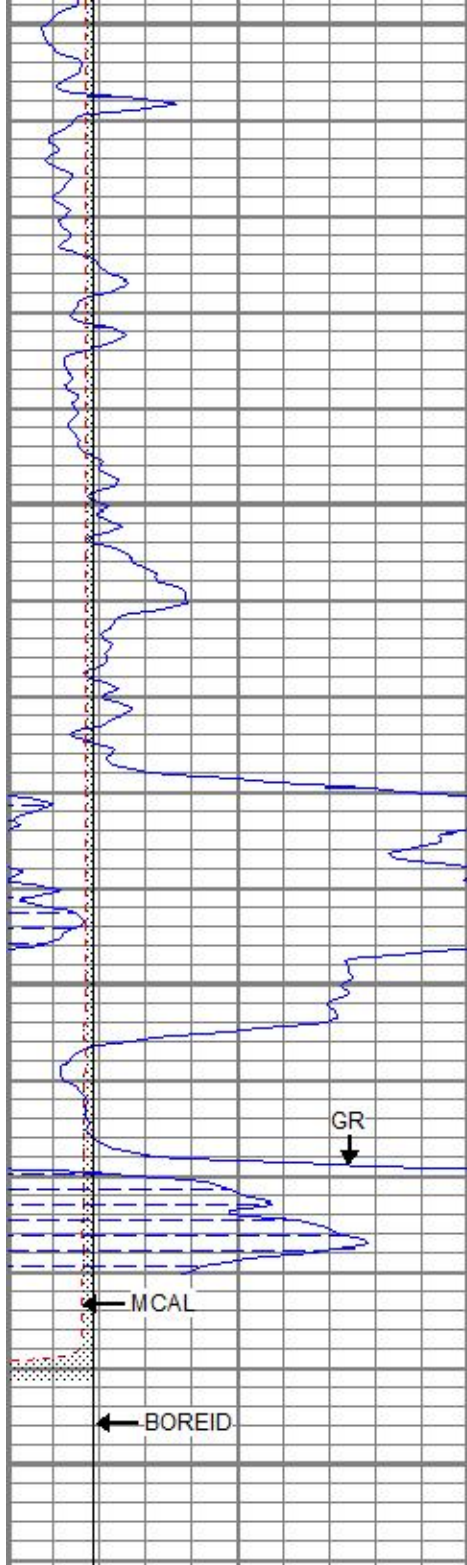
3200

3250

3300

3350





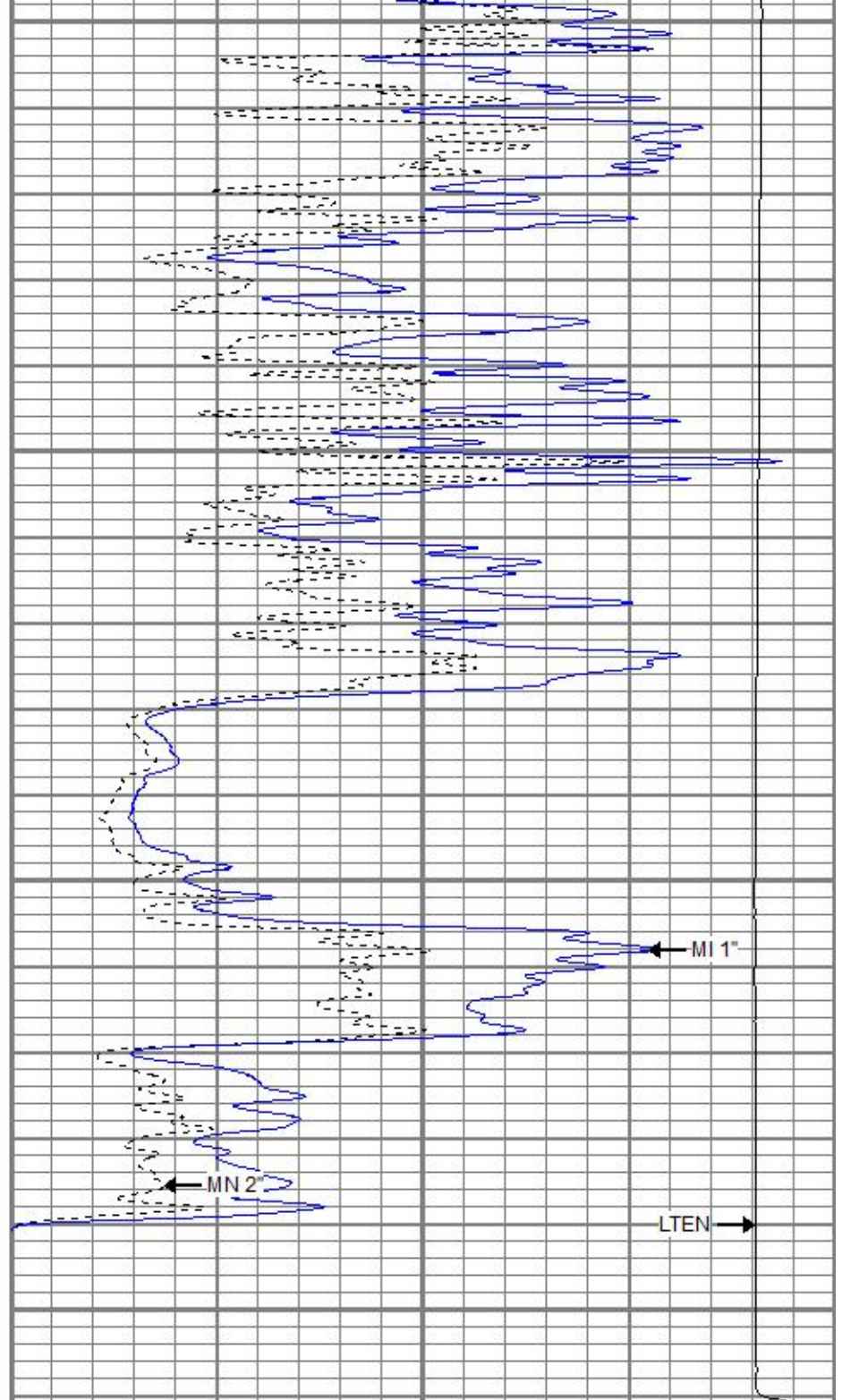
3400

3450

3500

3550

0	GR (GAPI)	150
6	MCAL (in)	16
6	BOREID (in)	16



0	MN 2" (Ohm-m)	20
0	MI 1" (Ohm-m)	20
10000	LTEN (lb)	0

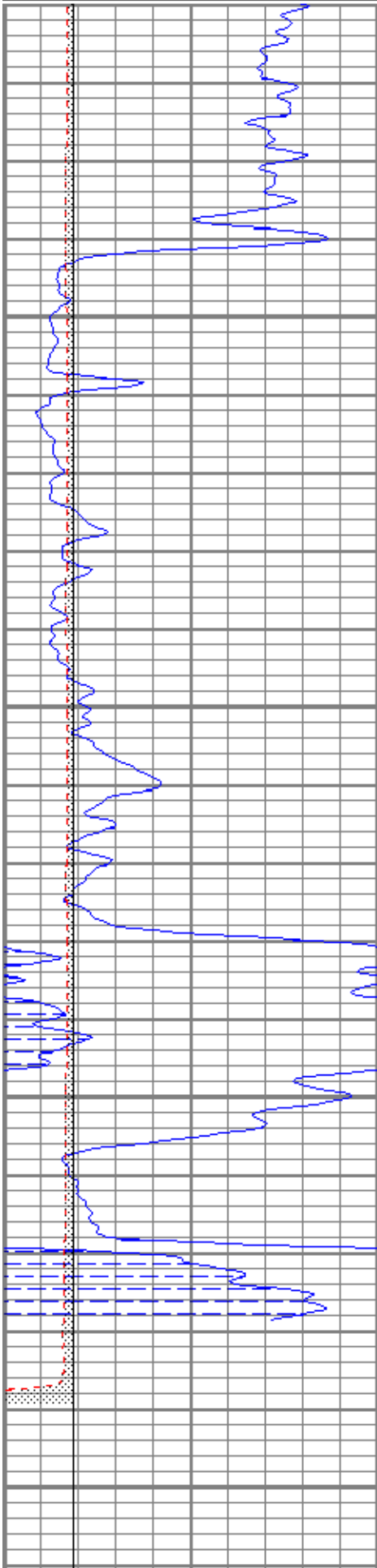


# REPEAT SECTION

Database File      trorichardson28-1oh.db  
 Dataset Pathname    pass3  
 Presentation Format   kml  
 Dataset Creation     Sun Oct 08 02:38:39 2017  
 Charted by            Depth in Feet scaled 1:240

0	GR (GAPI)	150
6	MCAL (in)	16
6	BOREID (in)	16

0	MN 2" (Ohm-m)	20
0	MI 1" (Ohm-m)	20
10000	LTEN (lb)	0

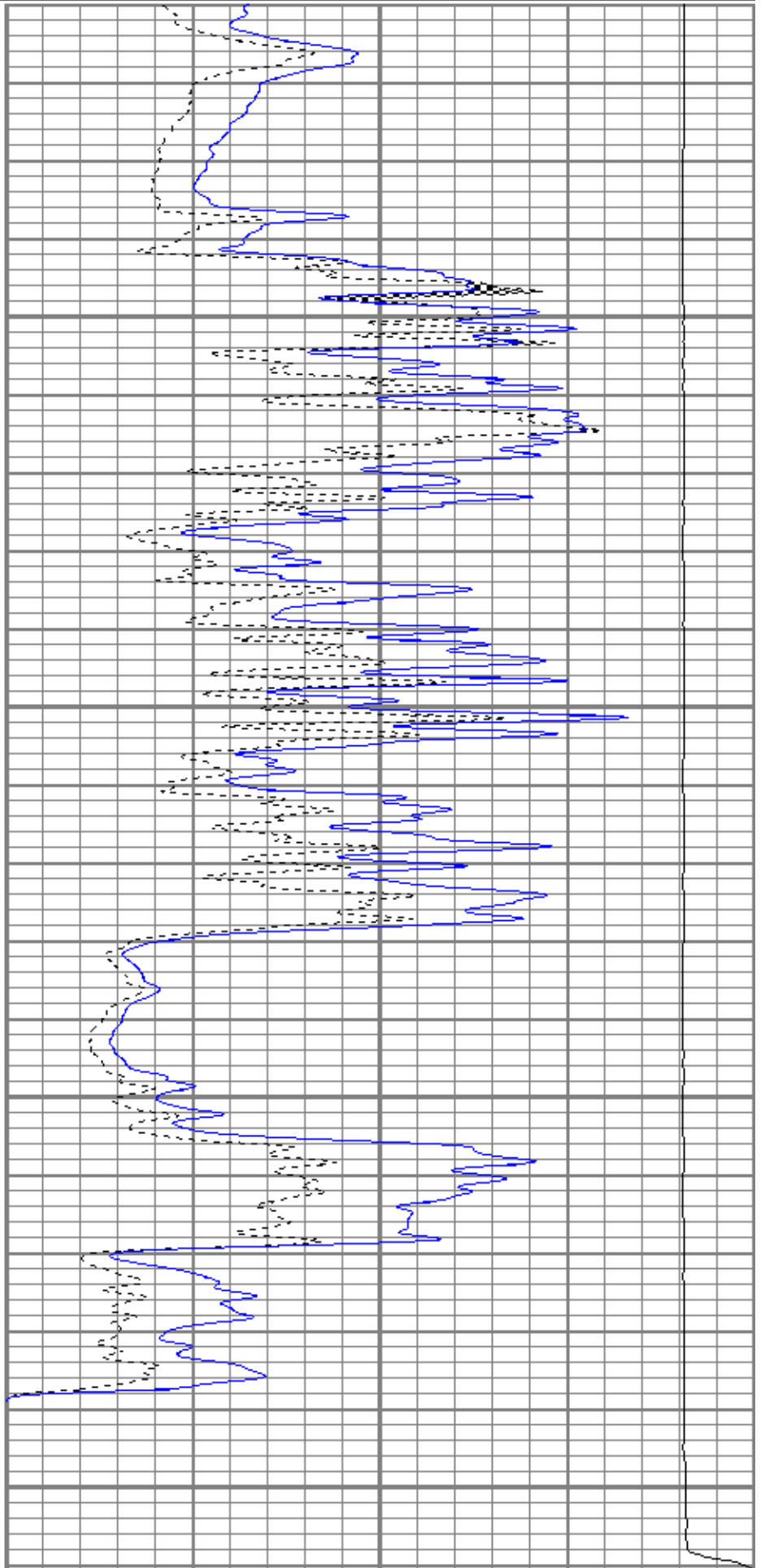


3400

3450

3500

3550



0	GR (GAPI)	150
---	-----------	-----

0	MN 2" (Ohm-m)	20
---	---------------	----

6	MCAL (in)	16
6	BOREID (in)	16

0	MI 1" (Ohm-m)	20
10000	LTEN (lb)	0

Calibration Report	
Database File	trorichardson28-1oh.db
Dataset Pathname	pass4
Dataset Creation	Sun Oct 08 02:49:28 2017

Microlog Calibration Report	
Serial-Model:	1600-Pengo
Performed:	Sun Oct 08 02:36:59 2017

	Readings			References			Results	
	Zero	Cal		Zero	Cal		m	b
Normal	-0.0020	0.5820	V	0.0000	10.0000	Ohm-m	17.1222	0.0346
Inverse	-0.0023	0.7557	V	0.0000	8.2000	Ohm-m	10.8176	0.0248
Caliper	1.0301	2.2816	V	6.4000	10.0000	in	2.8767	3.4367

Gamma Ray Calibration Report		
Serial Number:	2001	
Tool Model:	OH	
Performed:	Thu Aug 03 06:10:54 2017	
Calibrator Value:	1.0	GAPI
Background Reading:	0.0	cps
Calibrator Reading:	1.0	cps
Sensitivity:	0.8000	GAPI/cps

Sensor	Offset (ft)	Schematic	Description	Length (ft)	O.D. (in)	Weight (lb)
GR	28.34		CHD-None	0.75	1.50	5.00
			GR-OH (2001)	3.56	3.25	40.00
			2001			
MCAL	21.51		ML-Pengo (1600)	6.97	3.50	100.00
MI	21.51					
MN	21.51					
WVF4	14.25		SLT-G (372)	15.71	3.50	250.00
WVF3	13.25		Sonic			
WVF2	10.25					
WVF1	9.25	CENT-OHlong	4.50	3.50	50.00	
		Open Hole long Centralizer				

Dataset:	trorichardson28-1oh.db: field/well/run1/pass4
Total length:	31.49 ft
Total weight:	445.00 lb
O.D.:	3.50 in