



**BOREHOLE
COMPENSATED
SONIC
LOG**

Company Taos Resources Operating Company LLC
 Well Richardson #28-1
 Field Unnamed
 County Cowley
 State Kansas

Company Taos Resources Operating Company LLC
 Well Richardson #28-1
 Field Unnamed
 County Cowley State Kansas

Location: API #: 15 035 24677
 790' FSL & 1190' FEL

SEC 28 TWP 32S RGE 5E
 Permanent Datum Ground Level Elevation 1249'
 Log Measured From KB 5' AGL
 Drilling Measured From KB

Other Services
 DIL
 CDNL
 ML
 Elevation
 K.B. 1254'
 D.F. 1253'
 G.L. 1249'

Date	10-07-17
Run Number	Two
Depth Driller	3560'
Depth Logger	3561'
Bottom Logged Interval	3551'
Top Log Interval	350'
Casing Driller	8 5/8" @ 235'
Casing Logger	235'
Bit Size	7 7/8"
Type Fluid in Hole	Chemical
Density / Viscosity	9.5/40
PH / Fluid Loss	10.0/7.6
Source of Sample	Pit
Rm @ Meas. Temp	1.20@76degf
Rmf @ Meas. Temp	0.96@76degf
Rmc @ Meas. Temp	1.54@76degf
Source of Rmf / Rmc	Calculated
Rm @ BHT	0.78@117degf
Time Circulation Stopped	9:45 p.m.
Time Logger on Bottom	2:40 a.m.
Maximum Recorded Temperature	117degf
Equipment Number	T-729
Location	Hays, KS
Recorded By	C.Patterson
Witnessed By	Mr. Mike Pressnall

<<< Fold Here >>>

All interpretations are opinions based on inferences from electrical or other measurements and we cannot and do not guarantee the accuracy or correctness of any interpretation, and we shall not, except in the case of gross or willful negligence on our part, be liable or responsible for any loss, costs, damages, or expenses incurred or sustained by anyone resulting from any interpretation made by any of our officers, agents or employees. These interpretations are also subject to our general terms and conditions set out in our current Price Schedule.

Comments

East of Winfield(Main St. and 160 Hwy) 6.5 mi. to 151st rd., 1 south to 172nd Rd.,
 1/2 West, North into Location

Thank you for using Gemini Wireline
 785-625-1182

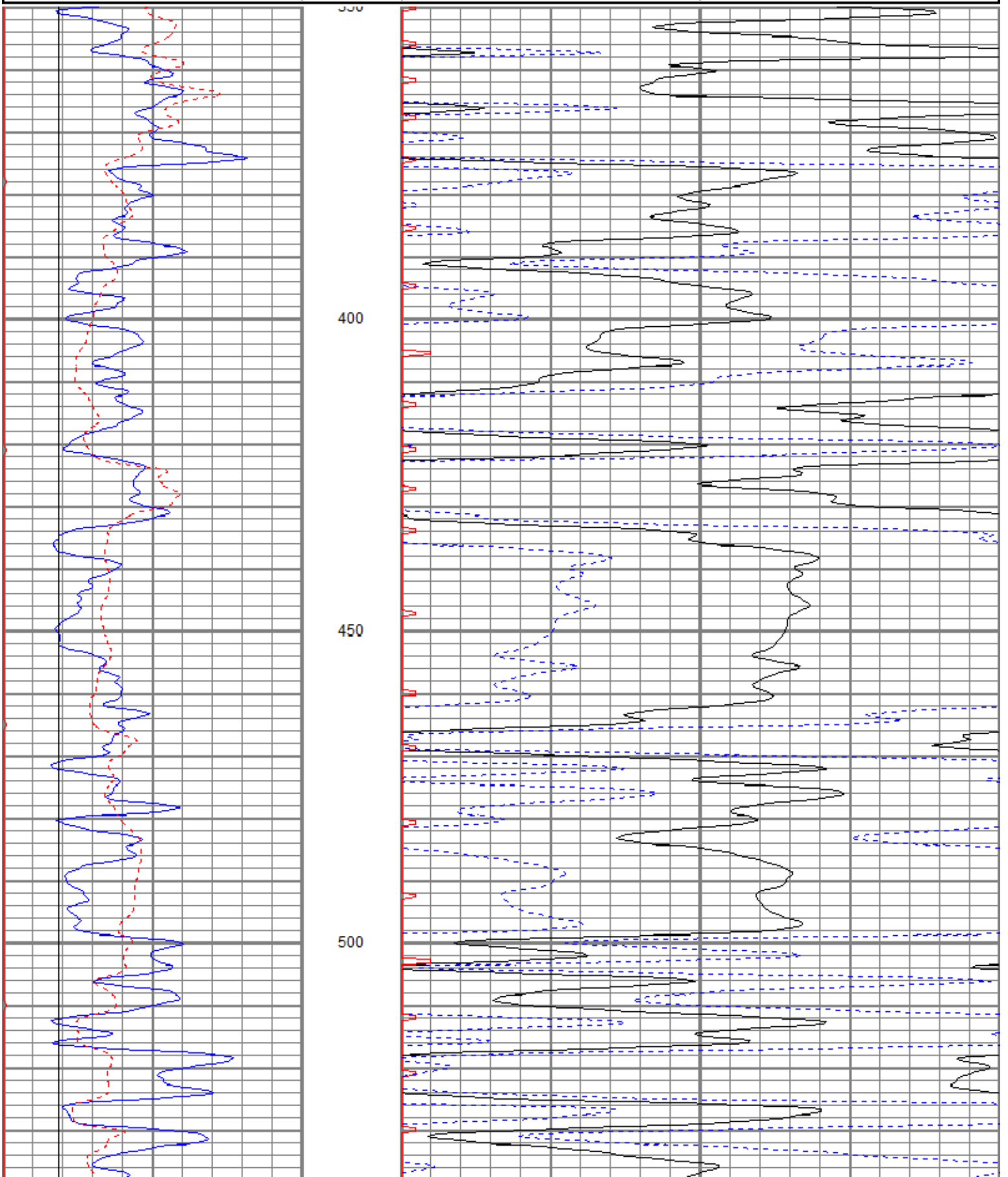


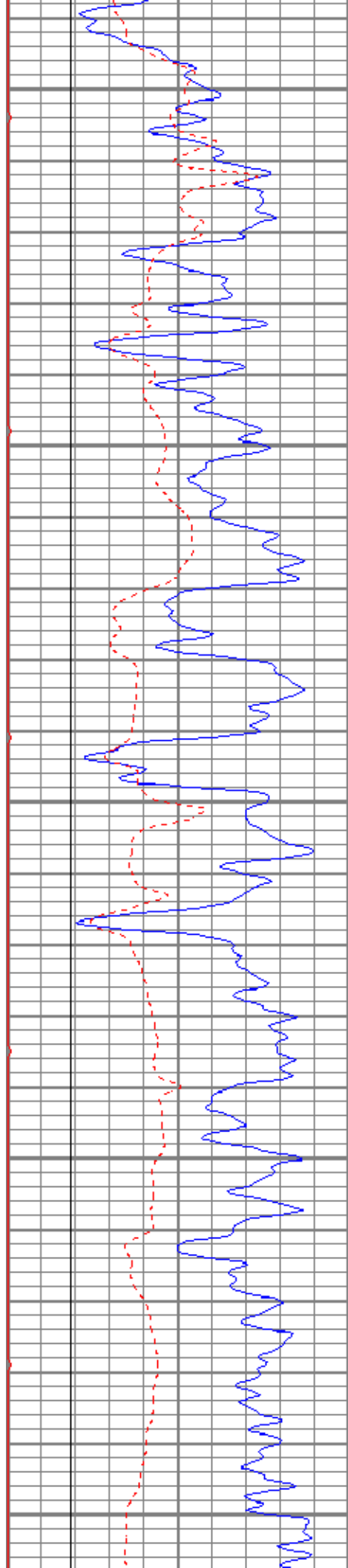
MAIN PASS

Database File trorichardson28-1oh.db
 Dataset Pathname pass4
 Presentation Format kbc
 Dataset Creation Sun Oct 08 02:49:28 2017
 Charted by Depth in Feet scaled 1:240

0	GR (GAPI)	150
6	MCAL (in)	16
6	BOREID (in)	16

140	DT (usec/ft)	40
30	SPOR (pu)	-10
0	ITT (msec)	20





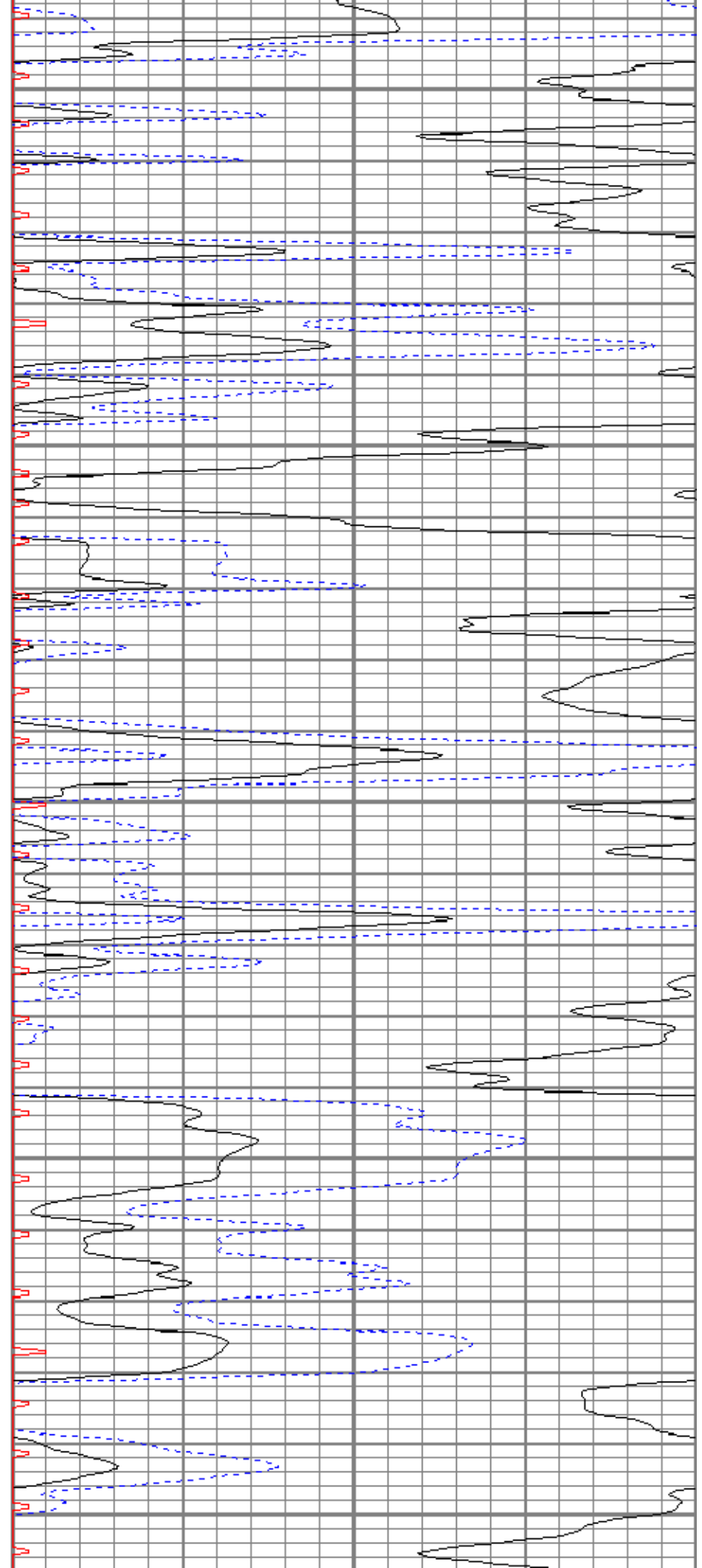
550

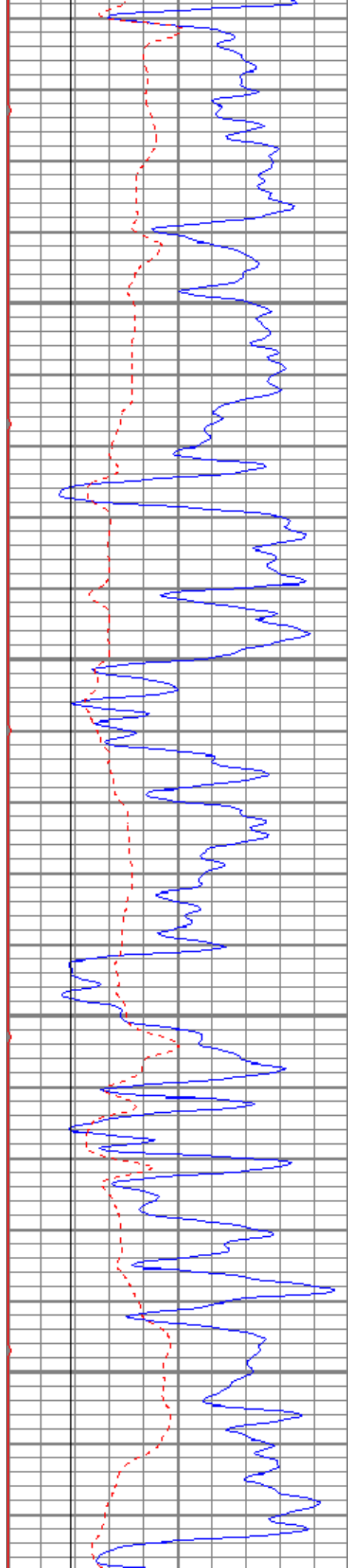
600

650

700

750



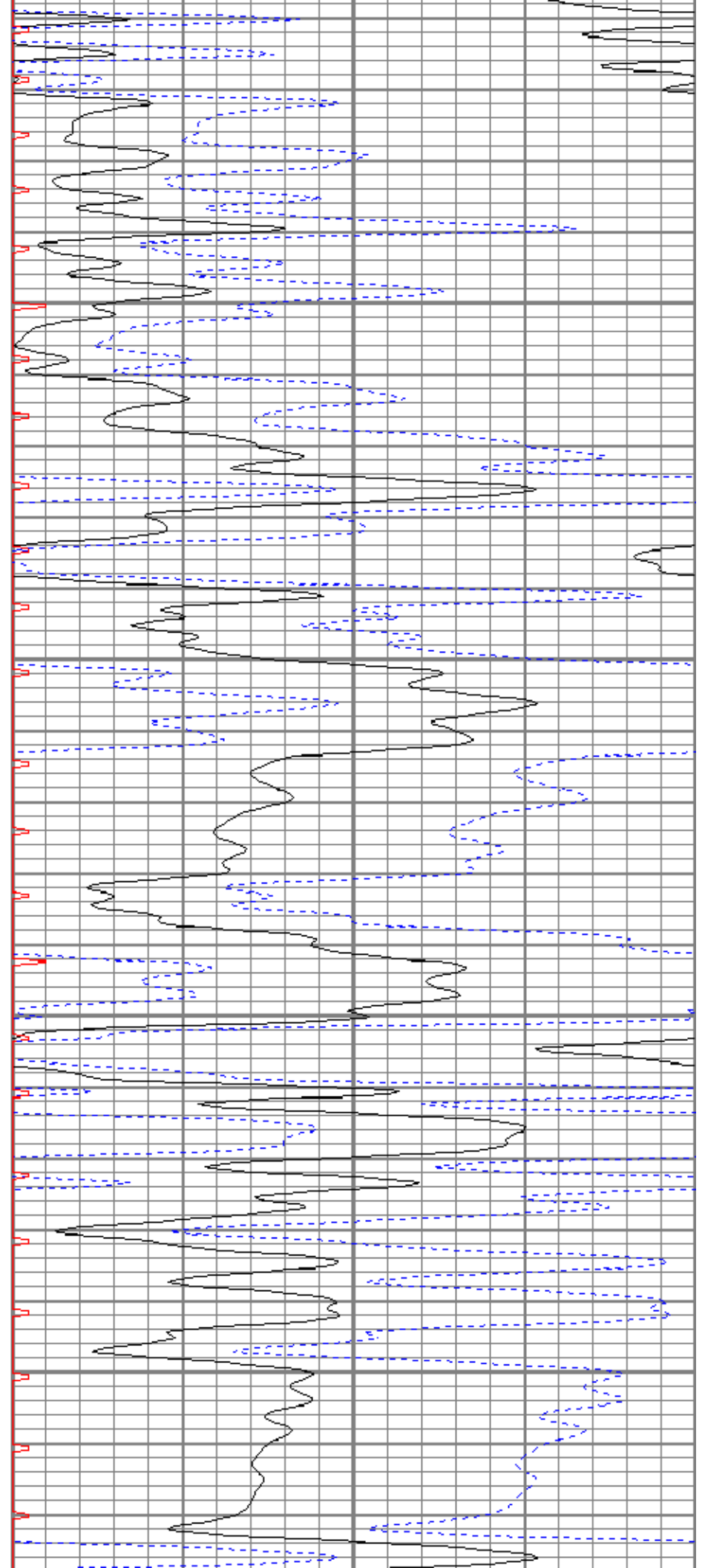


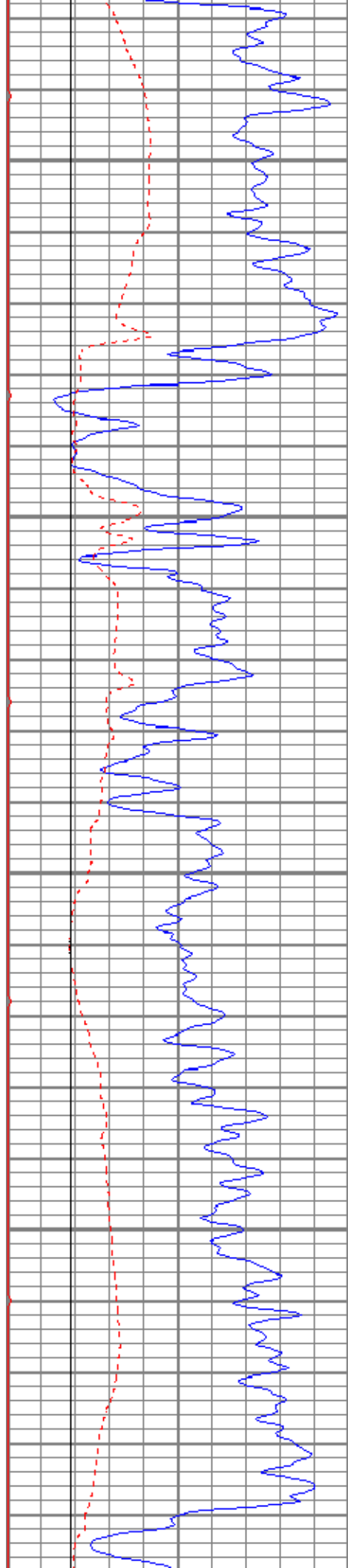
800

850

900

950



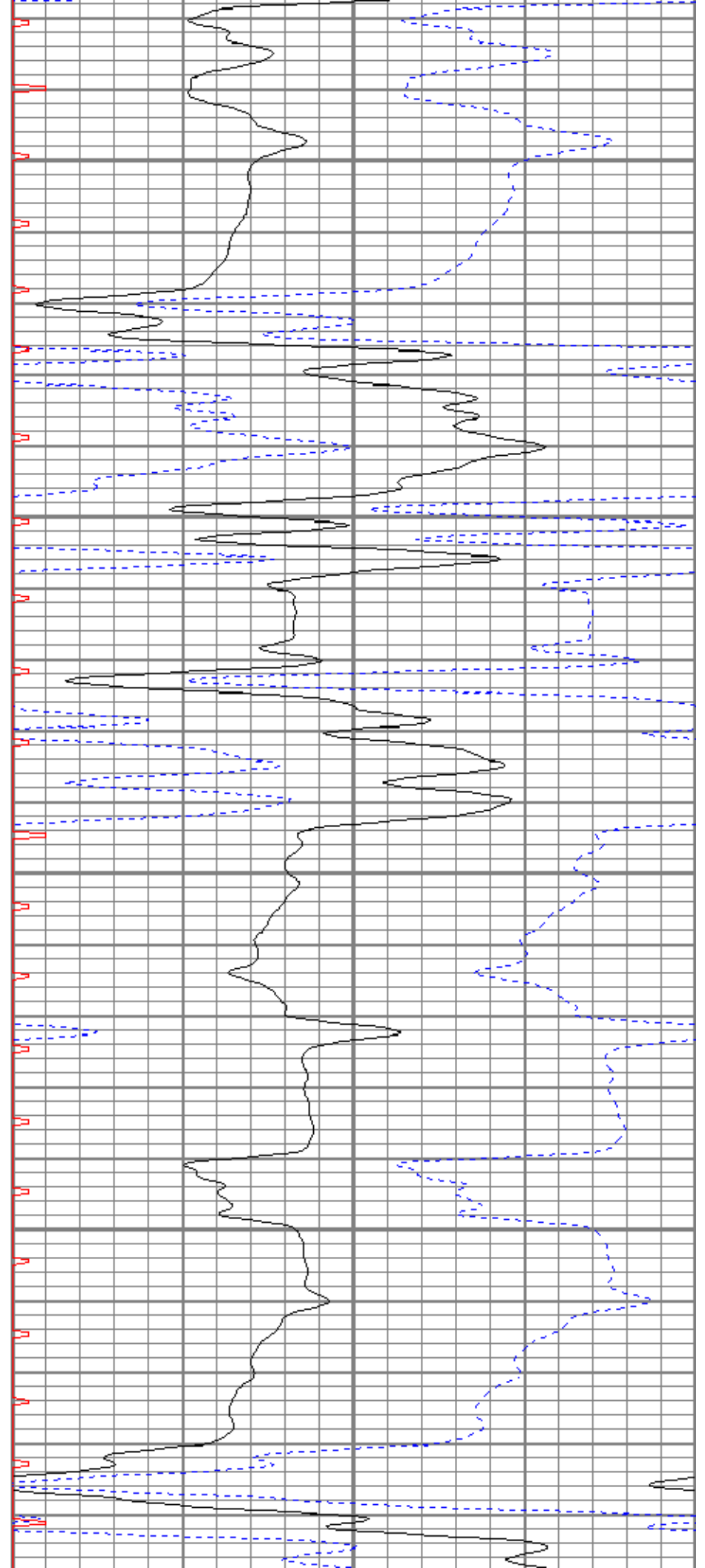


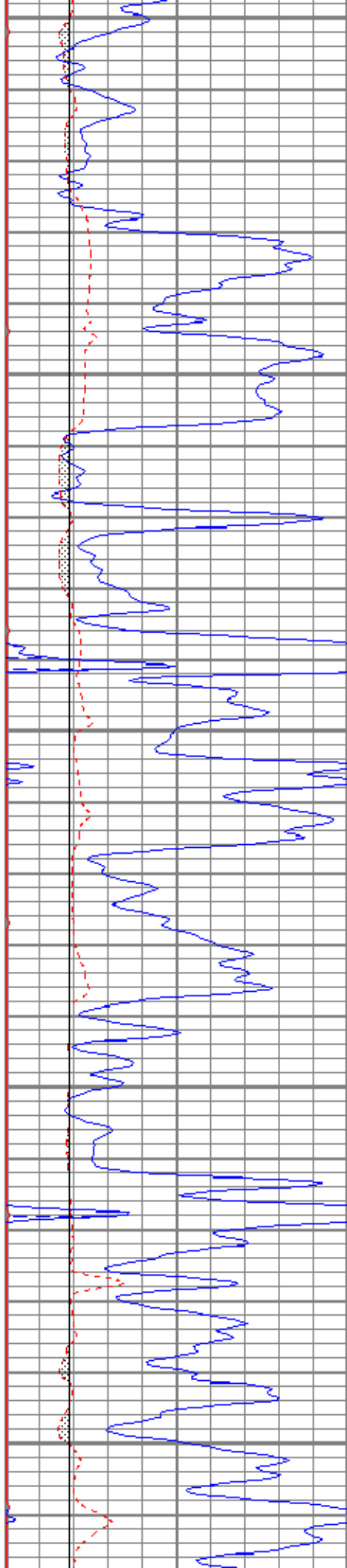
1000

1050

1100

1150





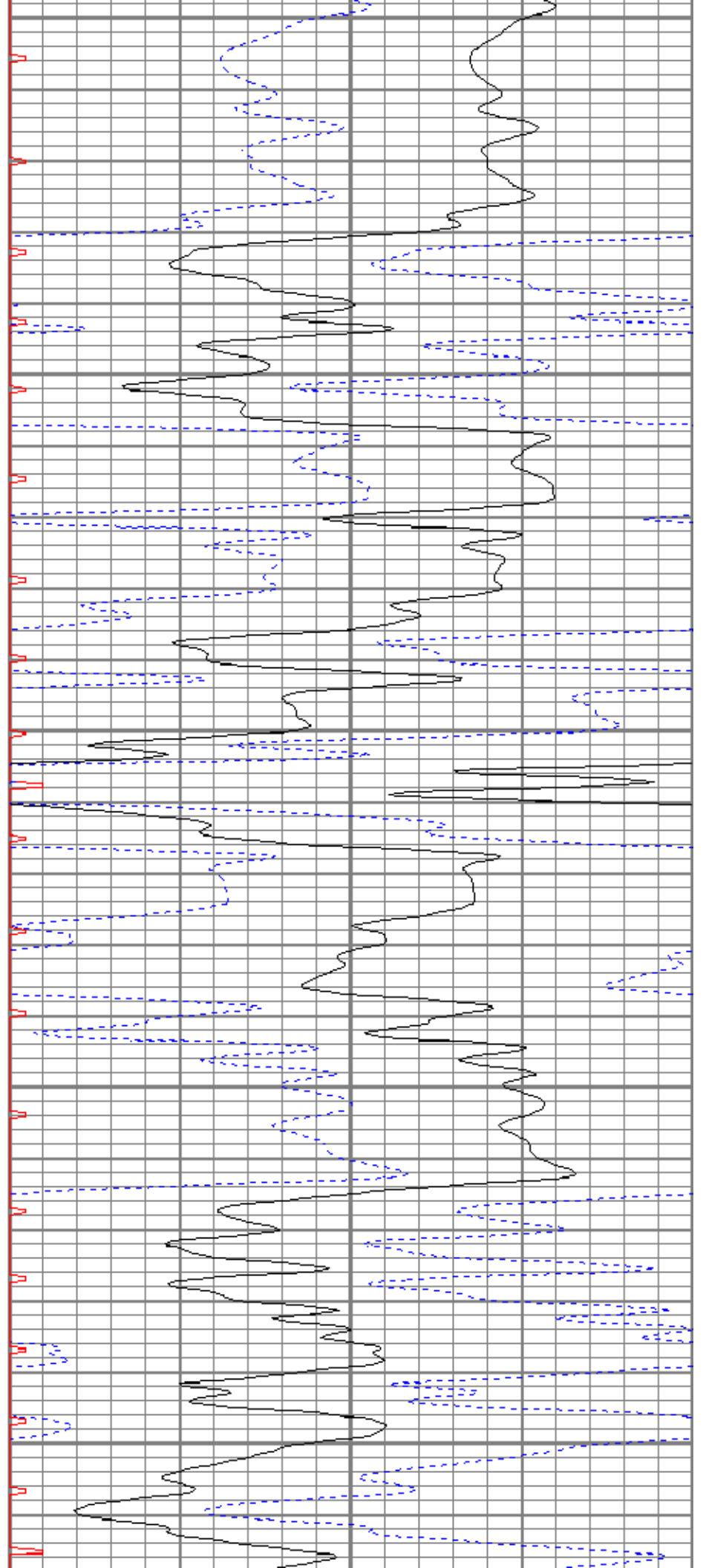
1200

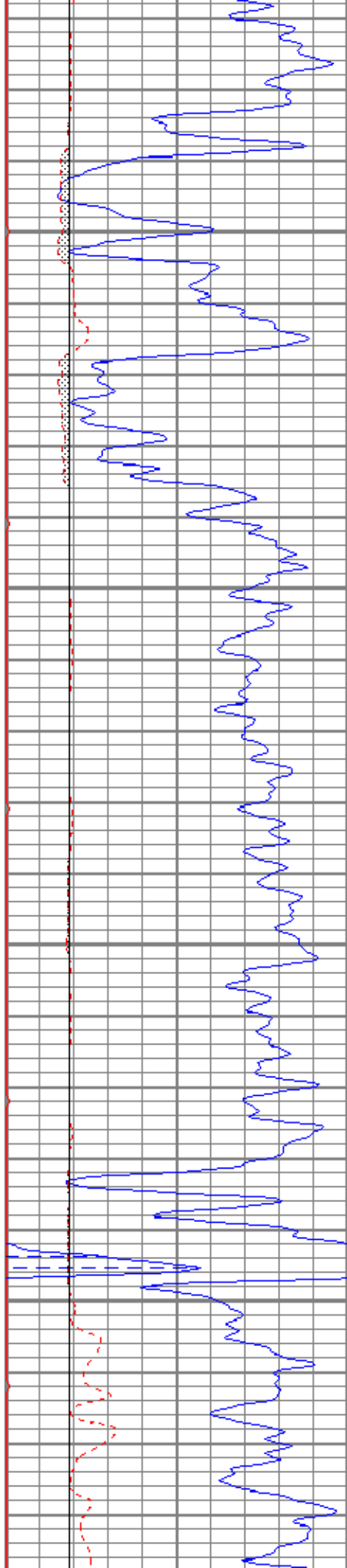
1250

1300

1350

1400



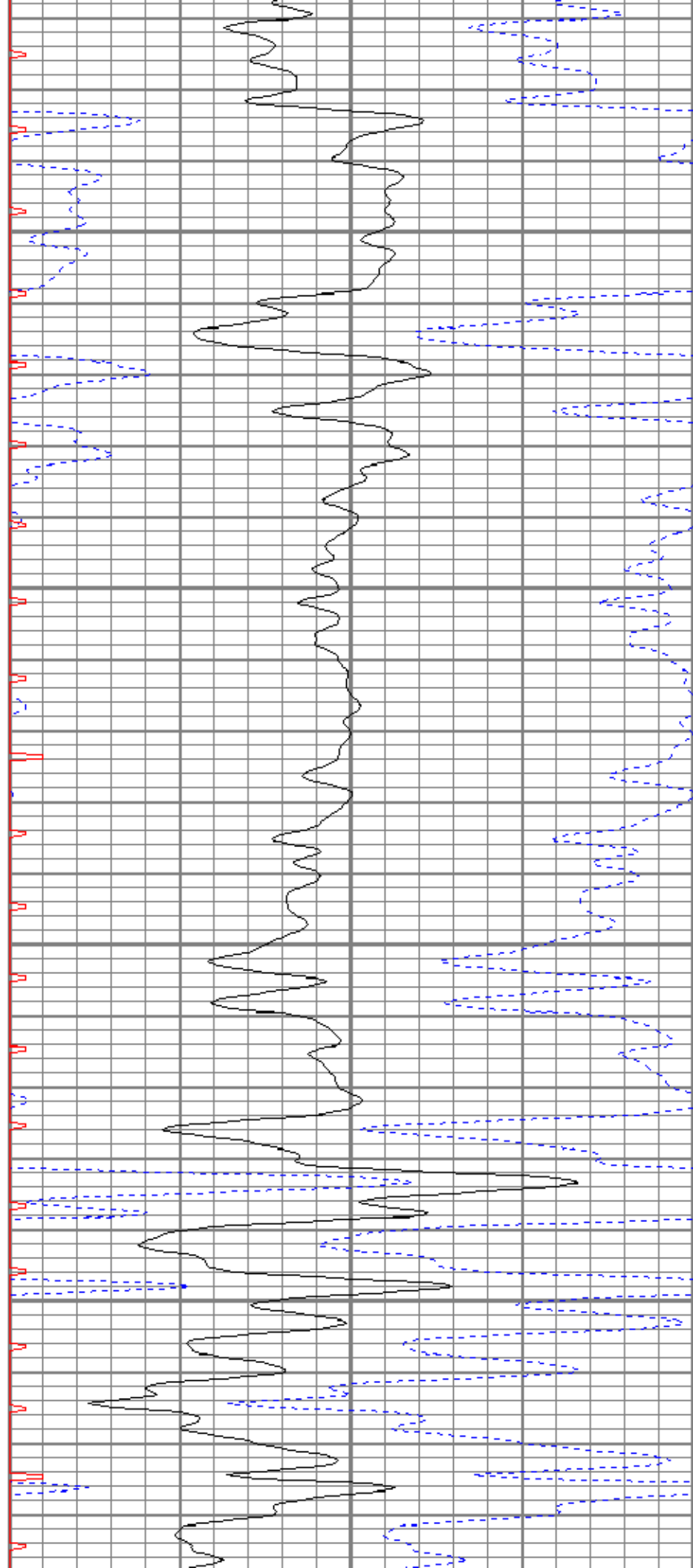


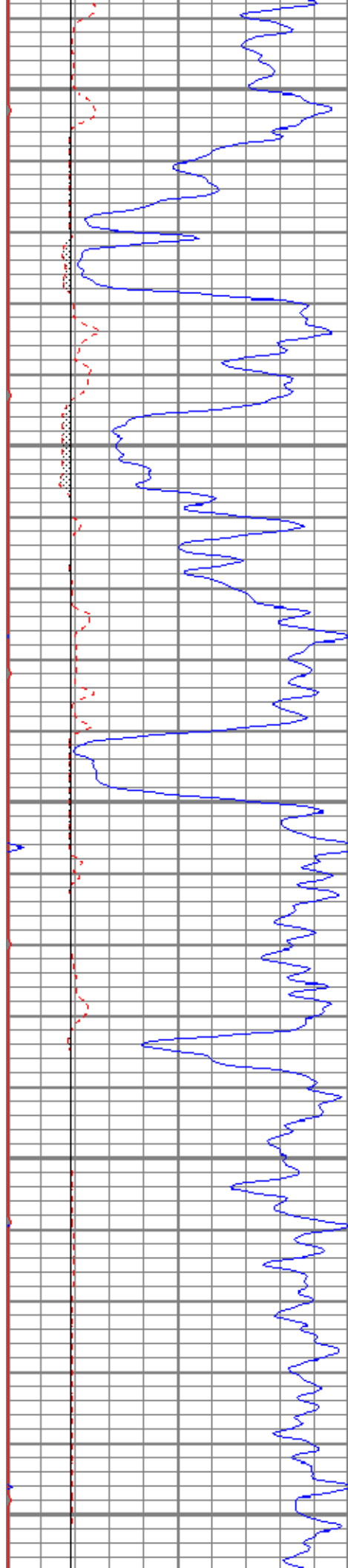
1450

1500

1550

1600





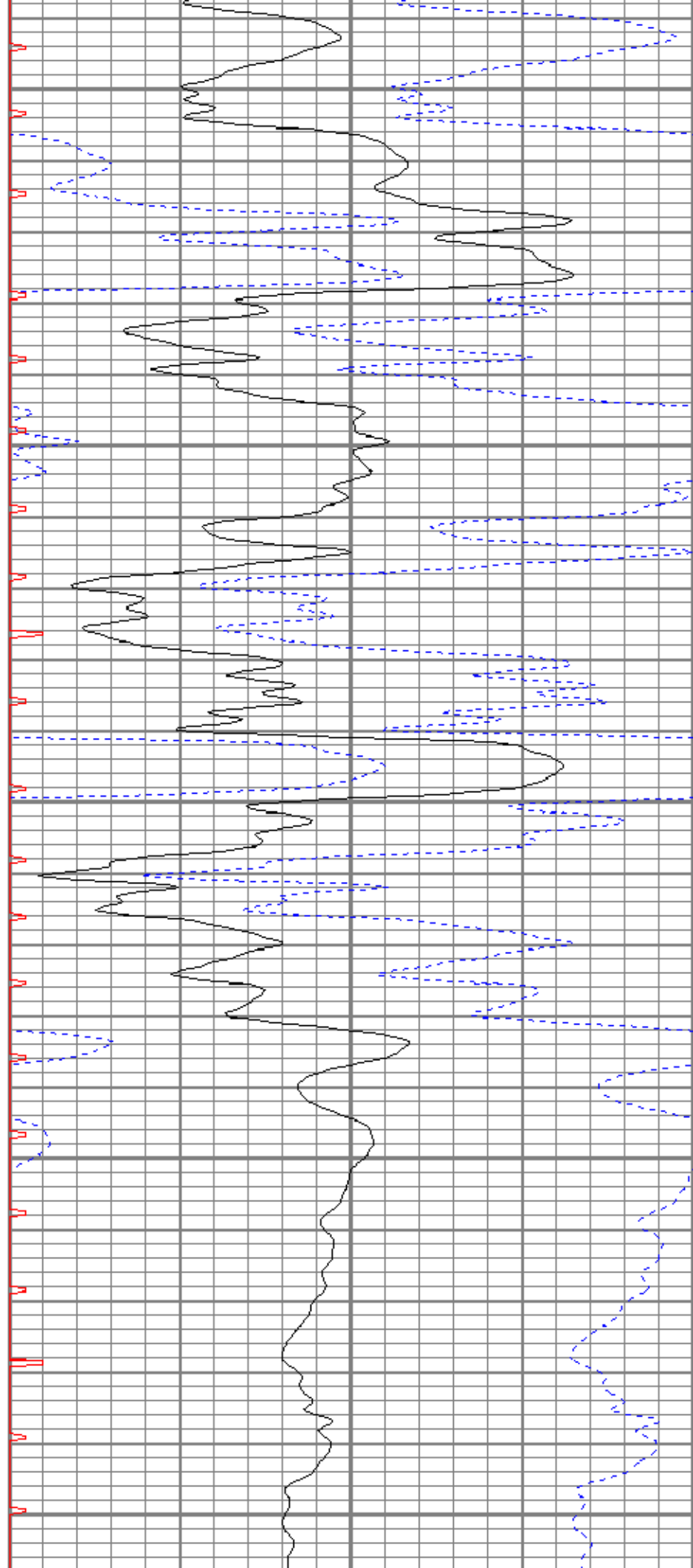
1650

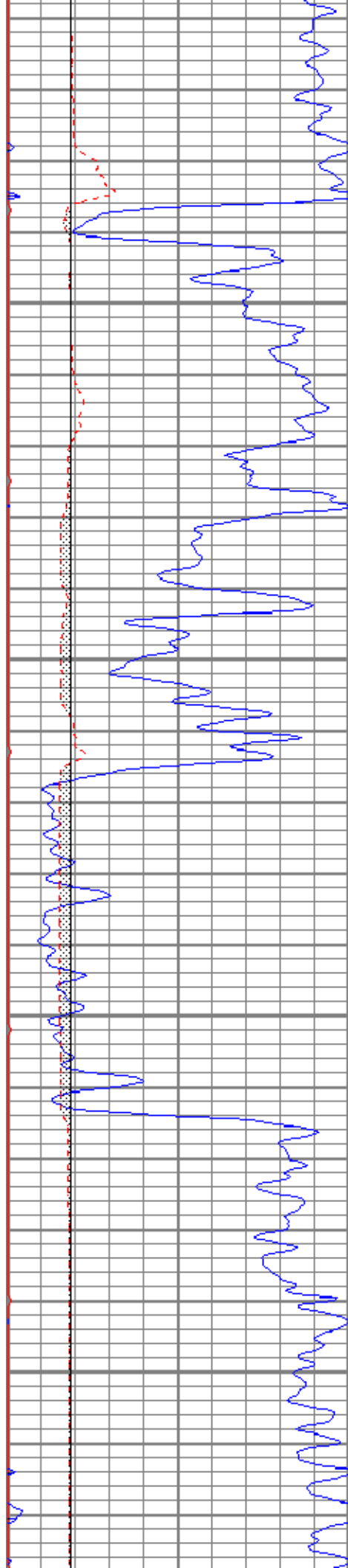
1700

1750

1800

1850



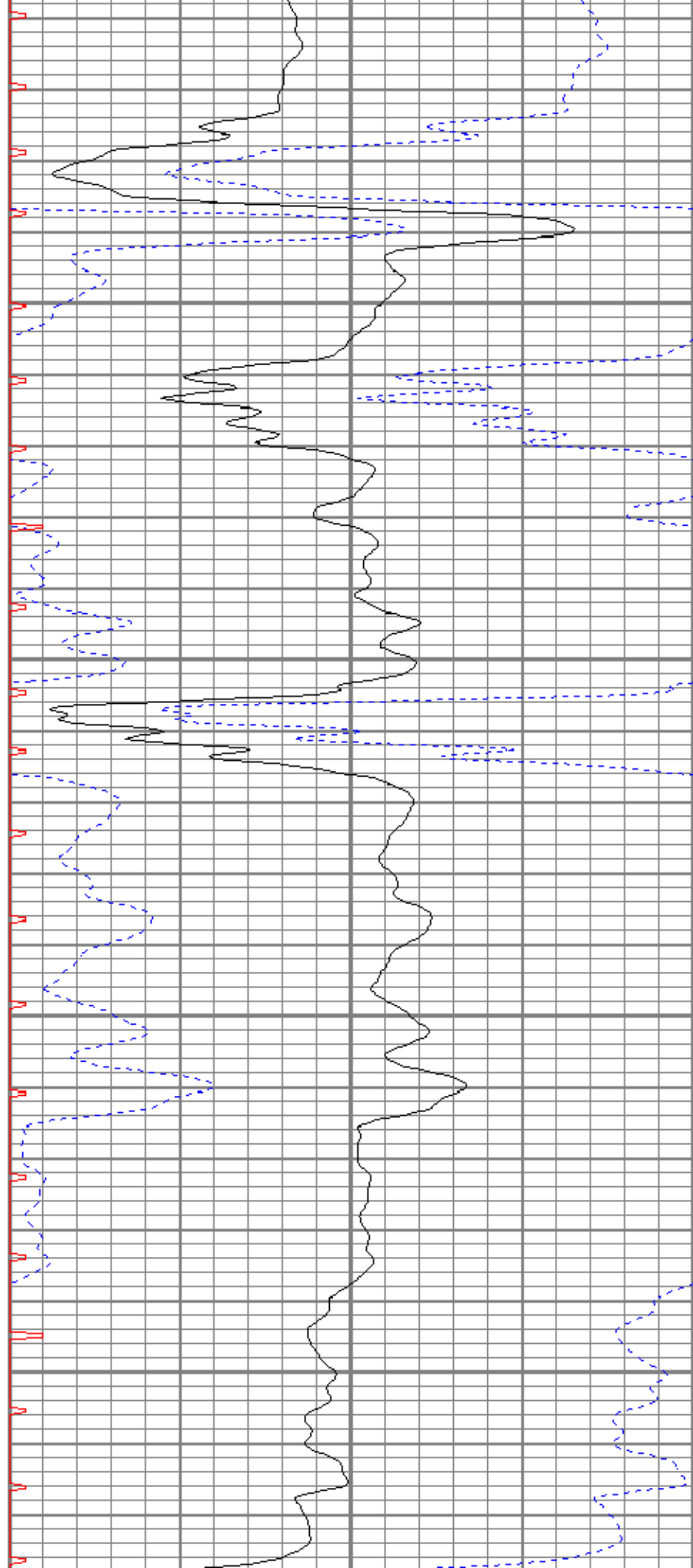


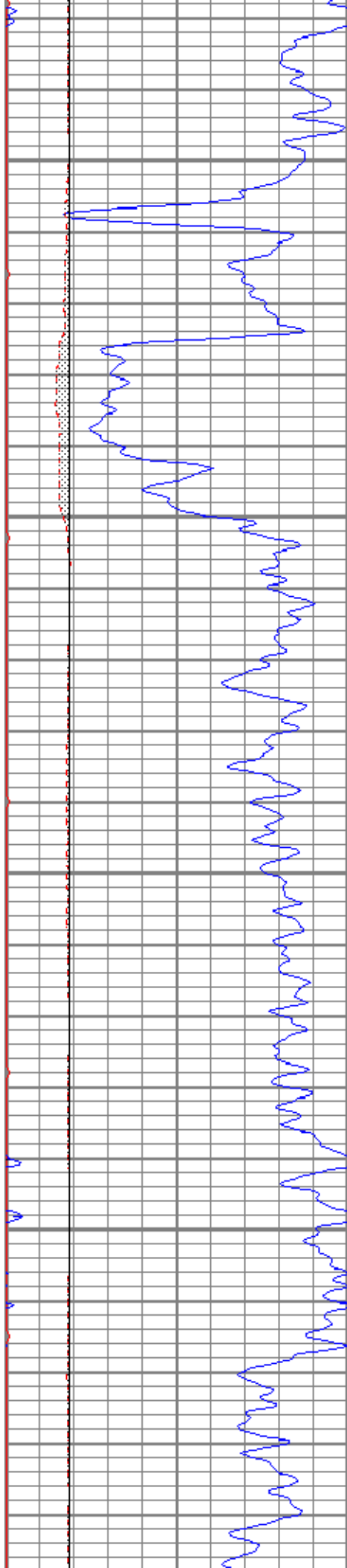
1900

1950

2000

2050



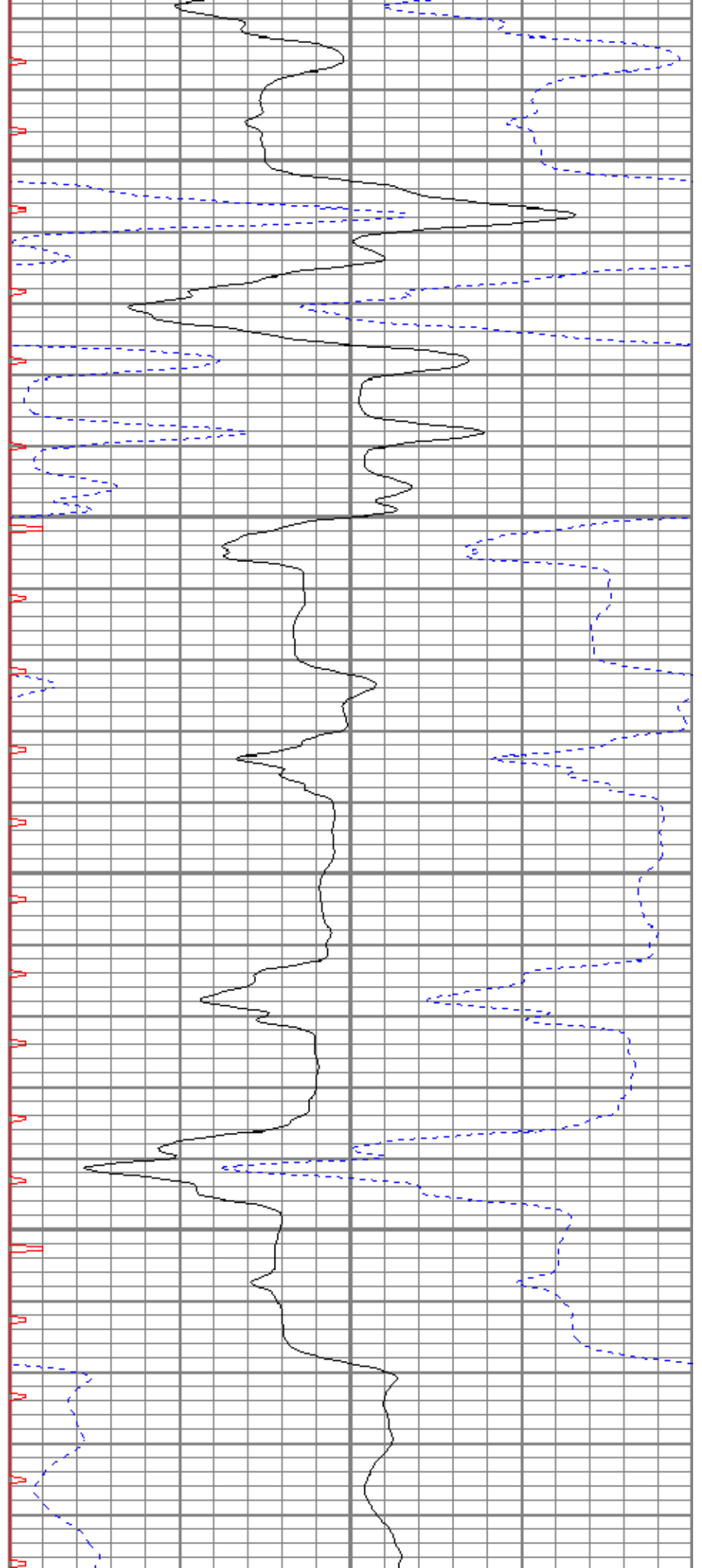


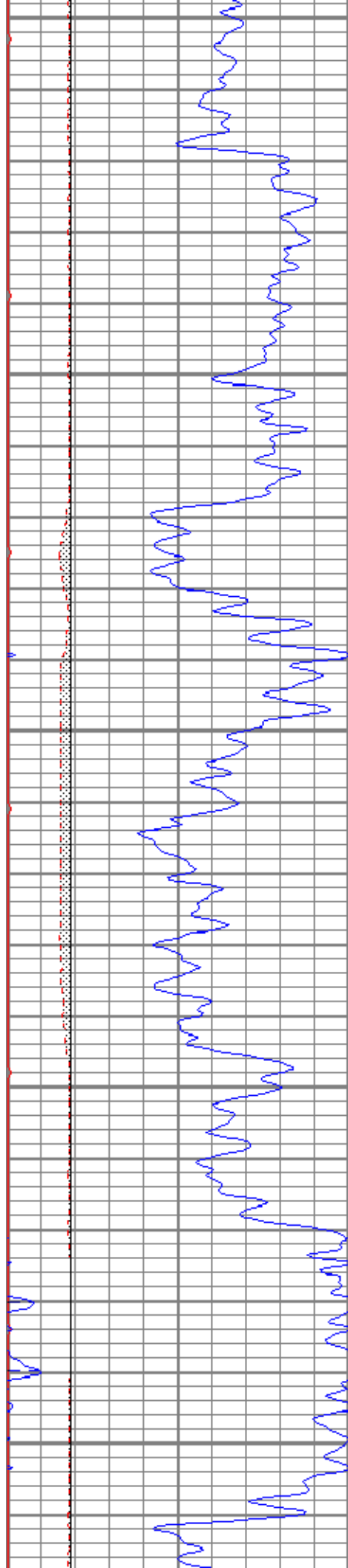
2100

2150

2200

2250





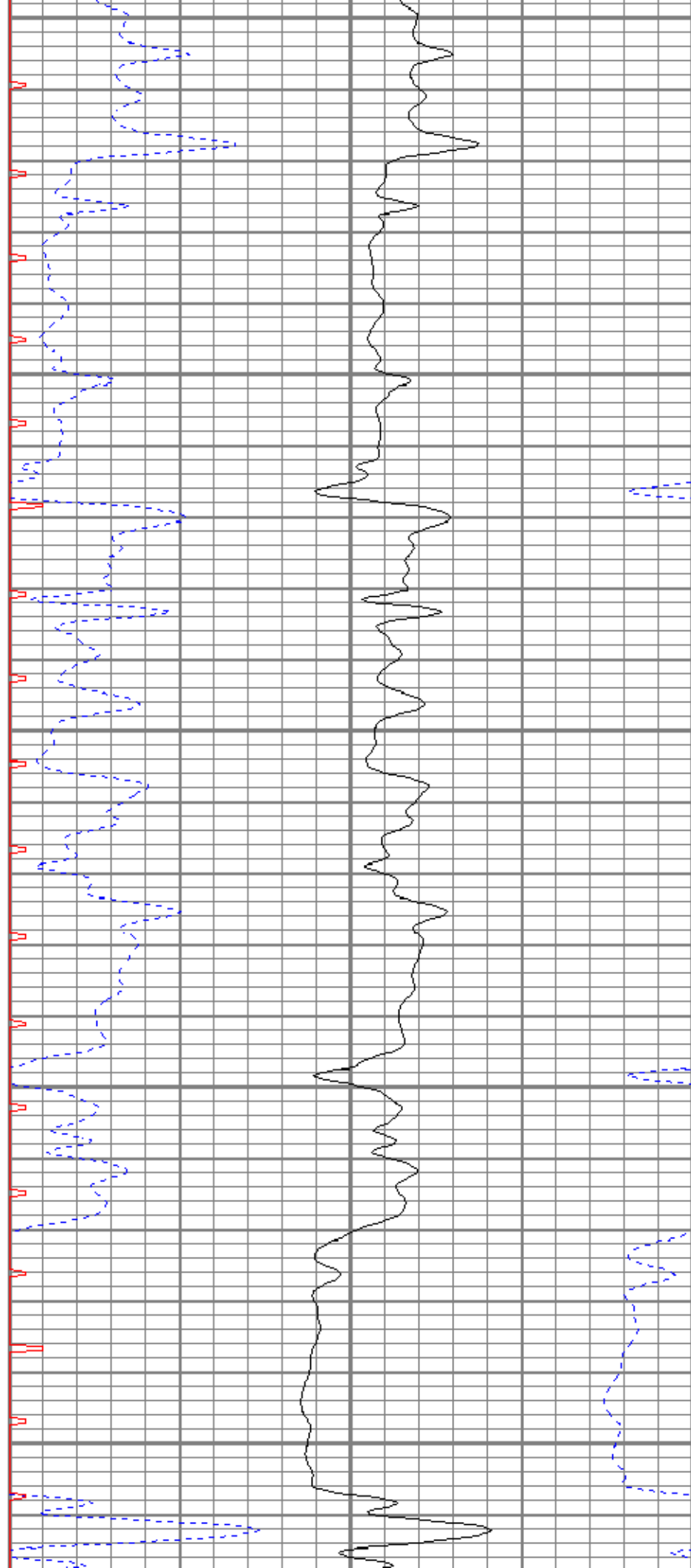
2300

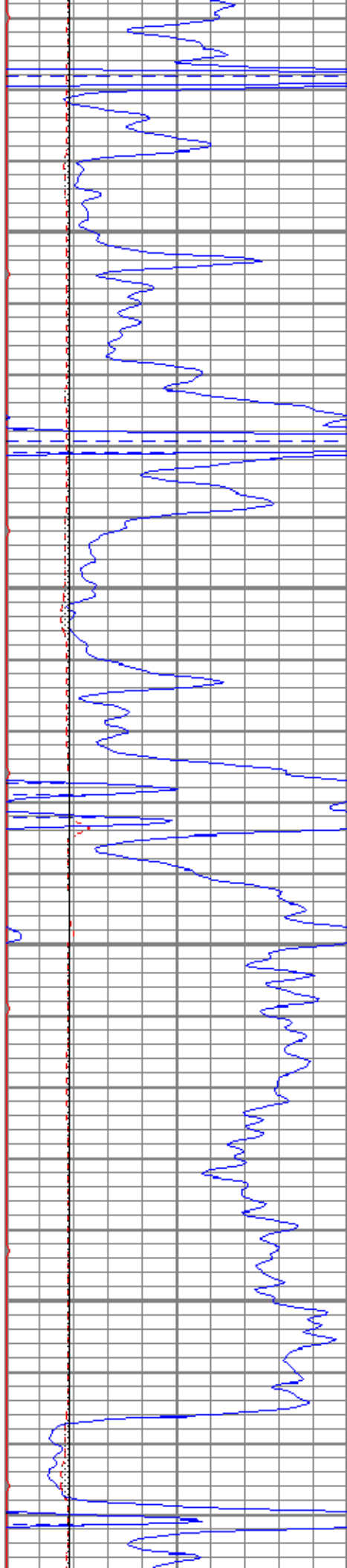
2350

2400

2450

2500



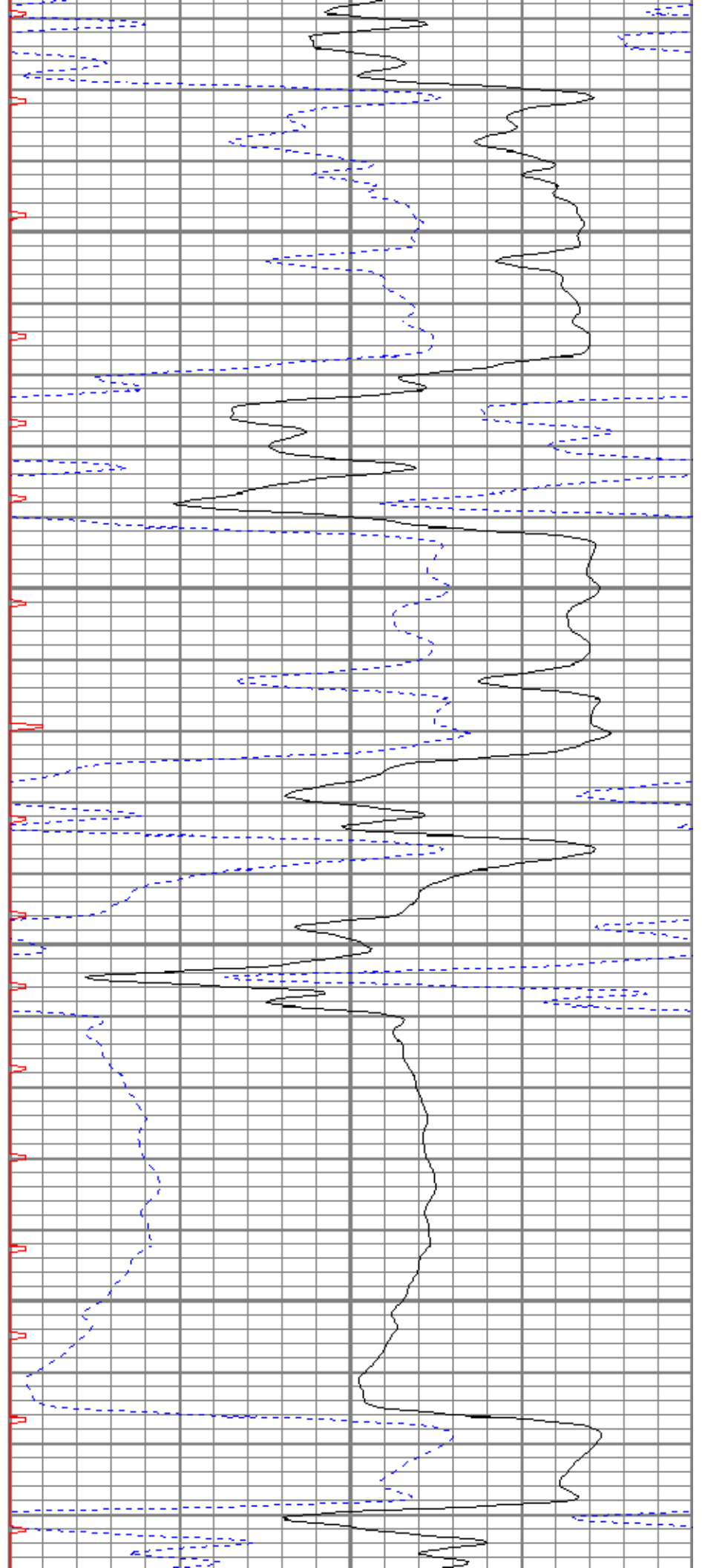


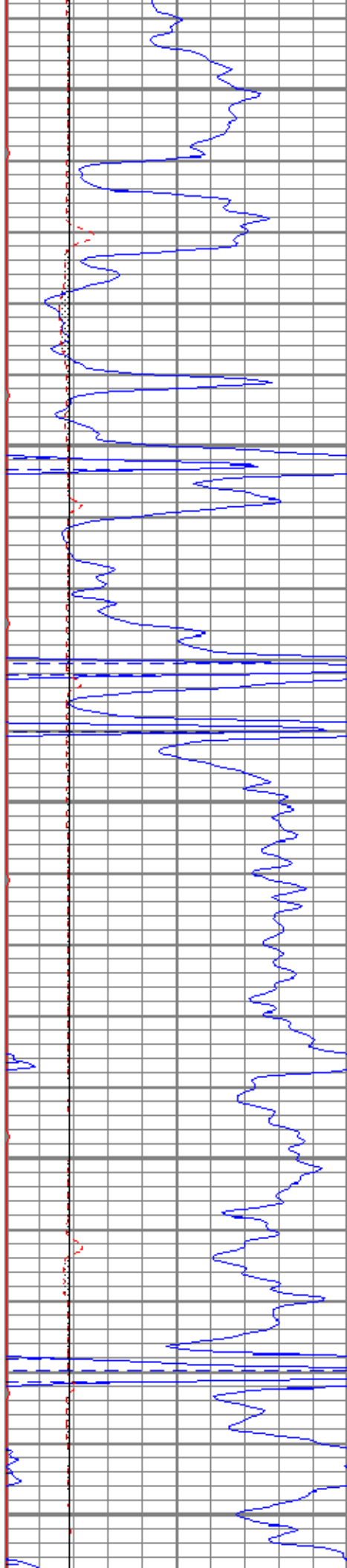
2550

2600

2650

2700





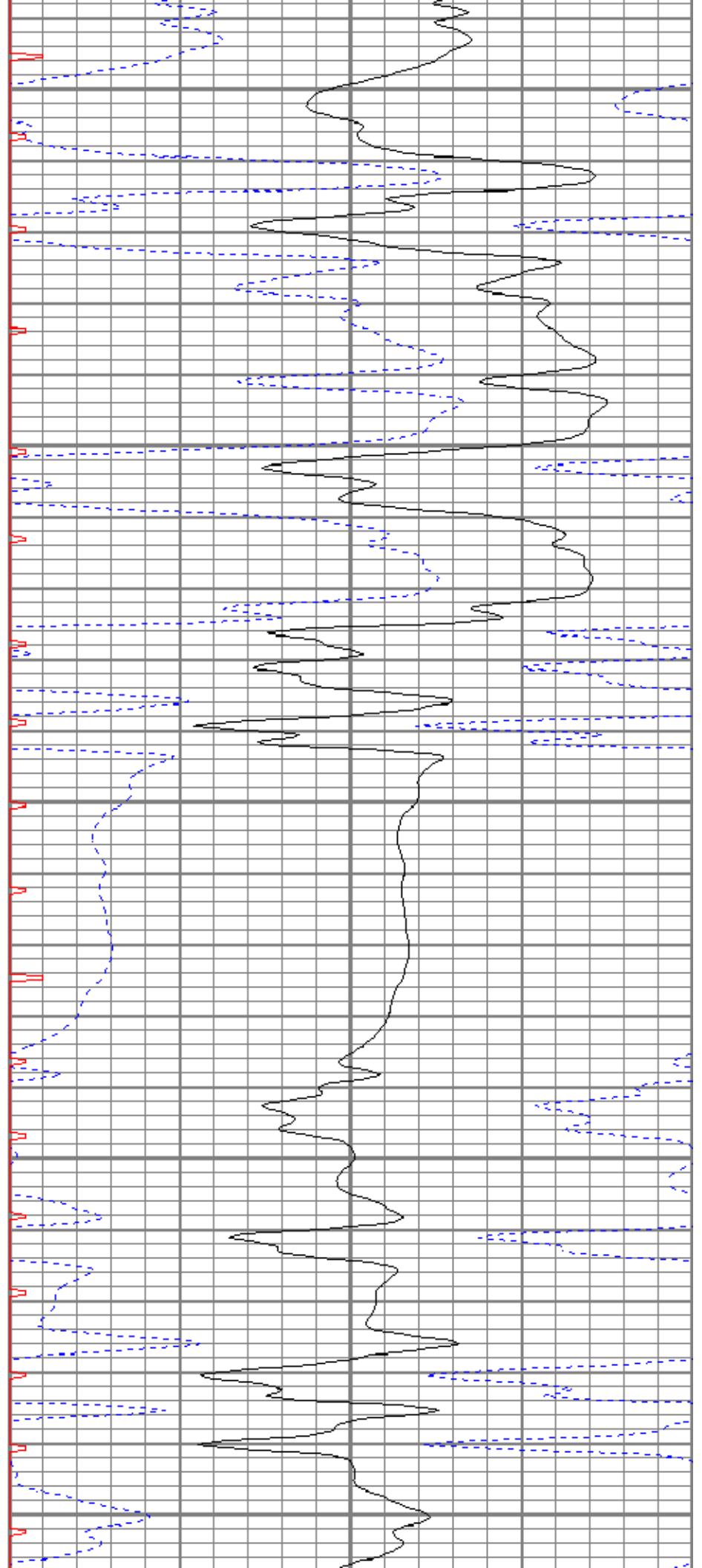
2750

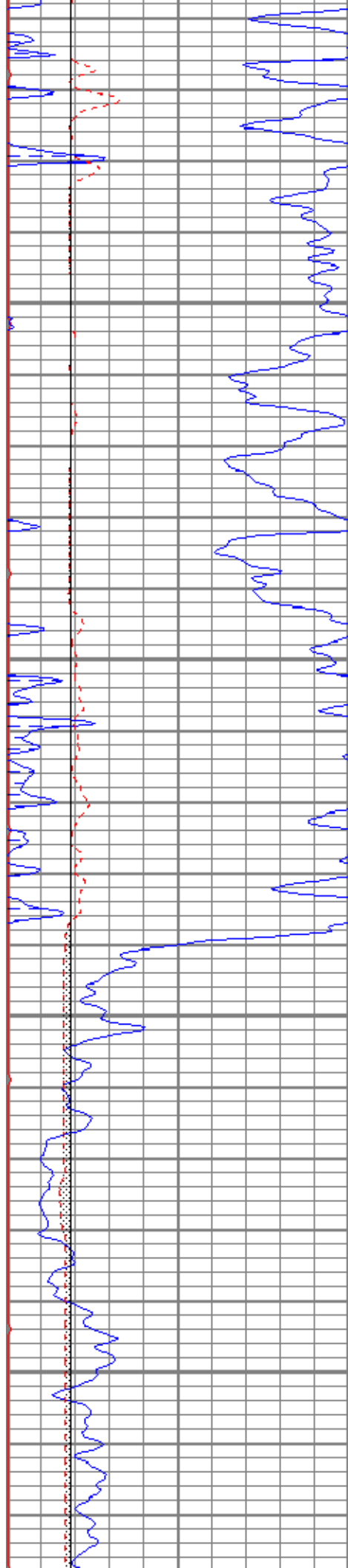
2800

2850

2900

2950



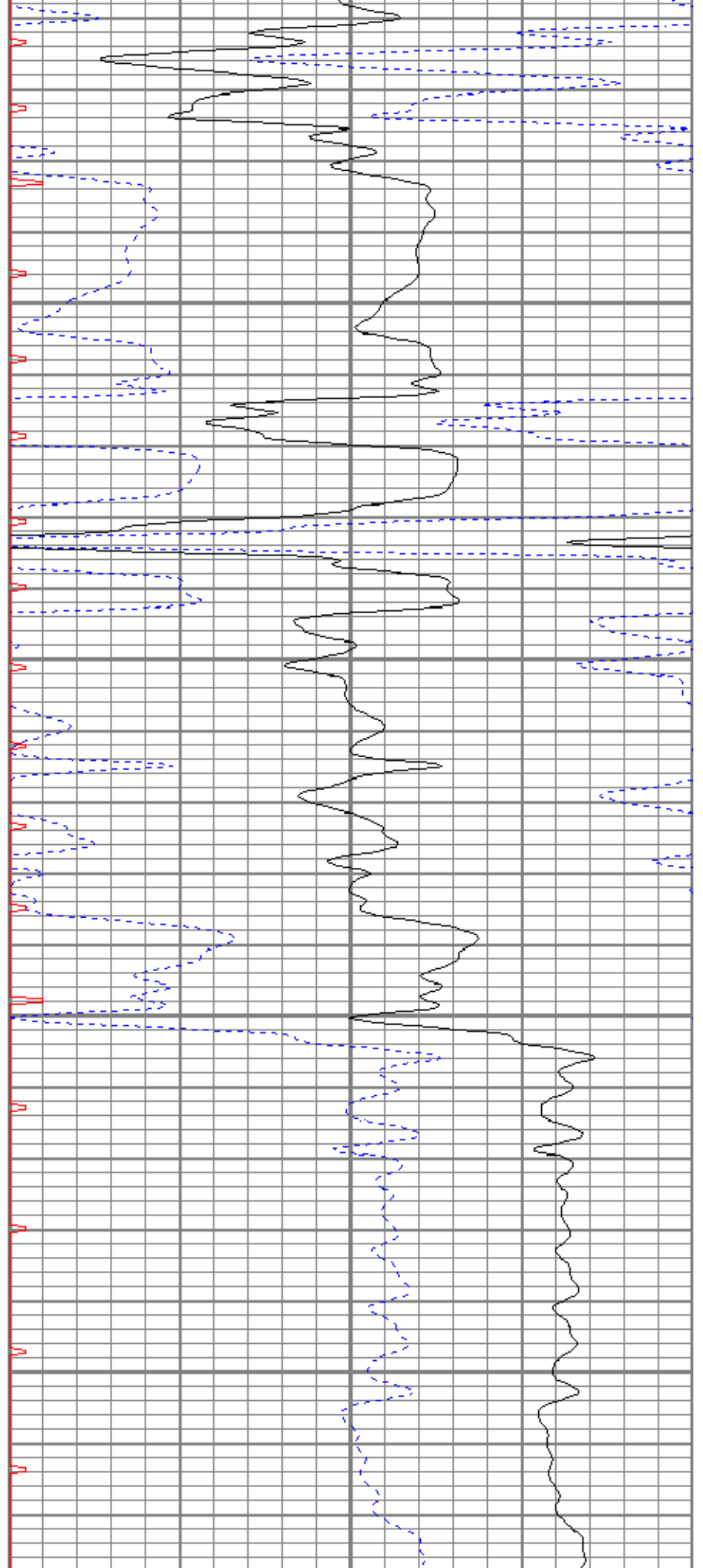


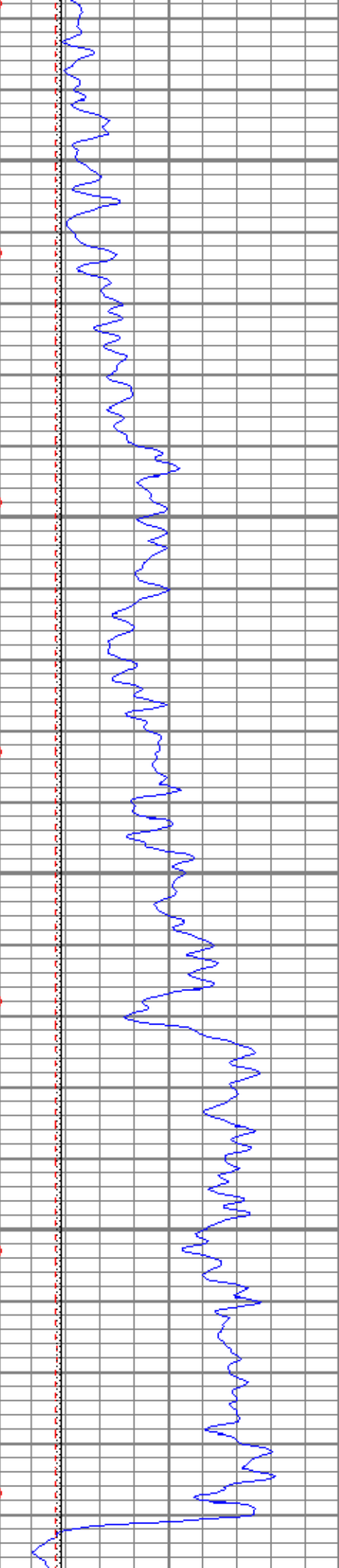
3000

3050

3100

3150



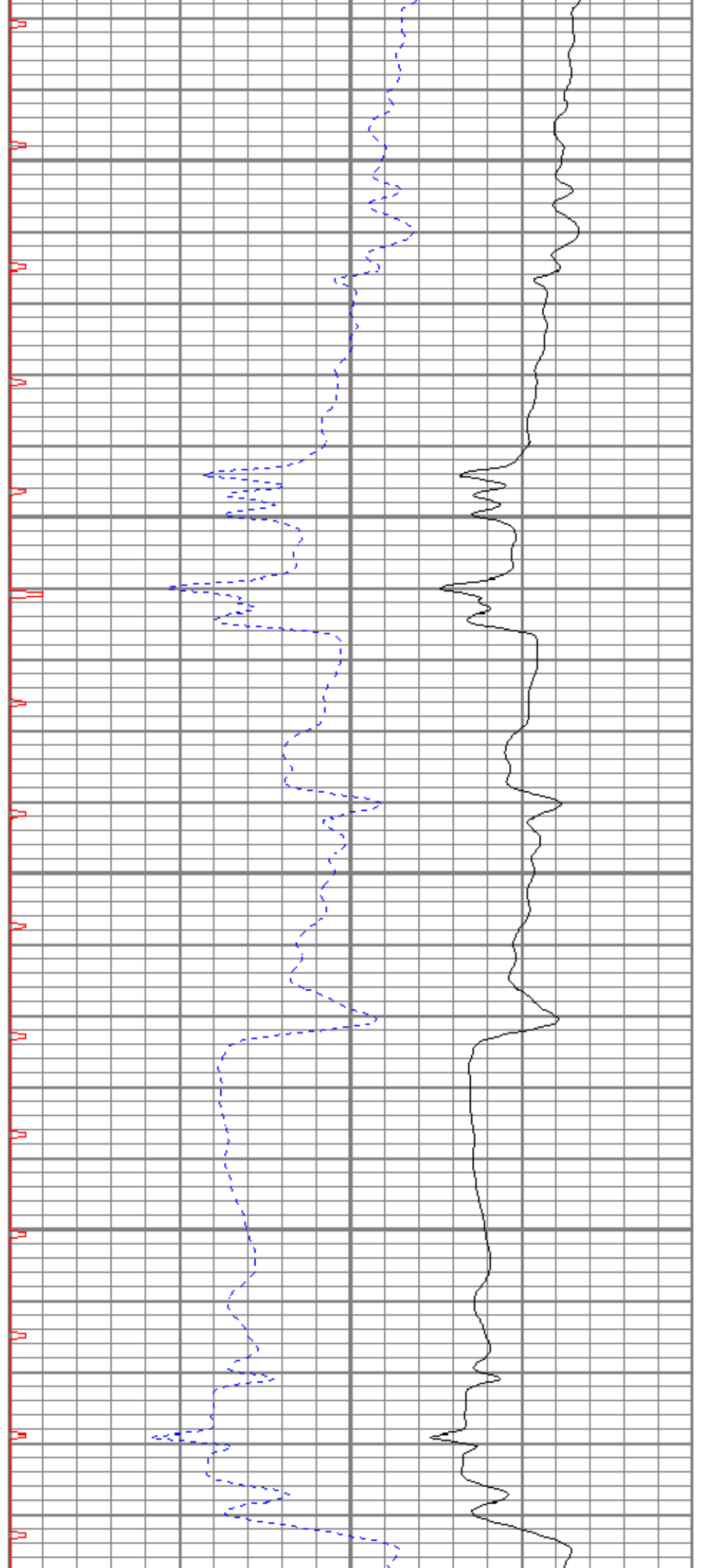


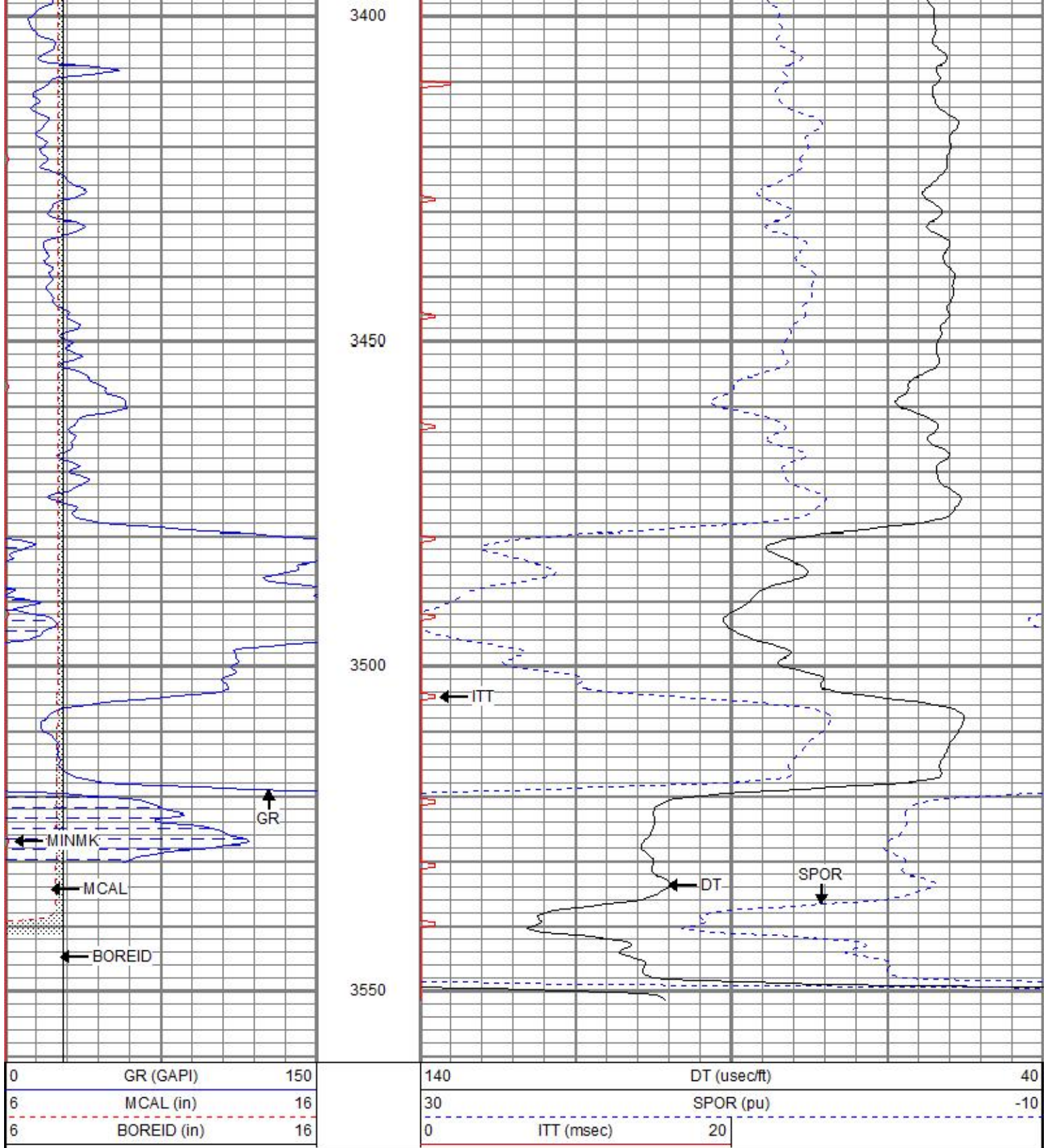
3200

3250

3300

3350



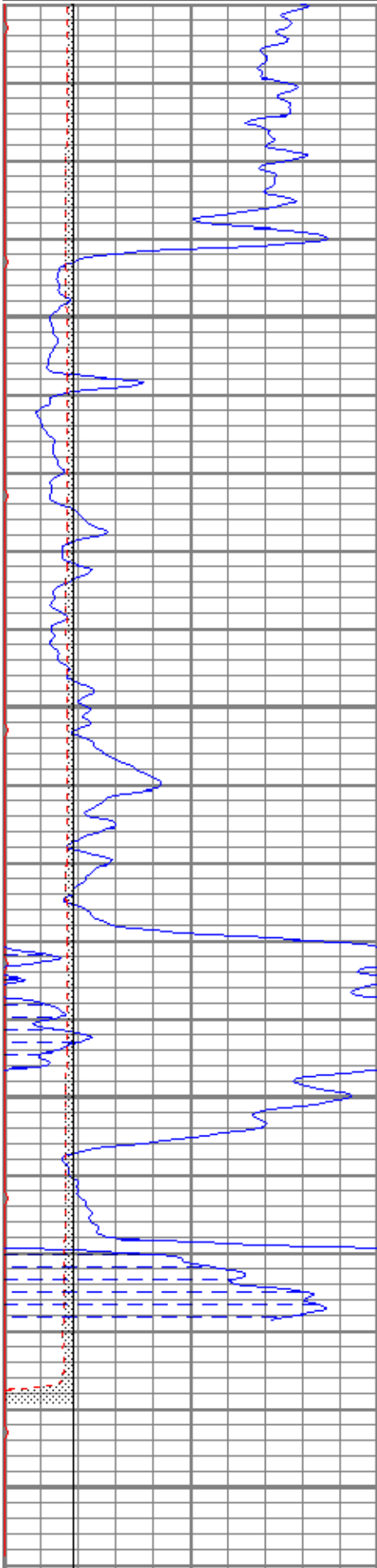


REPEAT SECTION

Database File: trorichardson28-1oh.db
 Dataset Pathname: pass3
 Presentation Format: kbcs
 Dataset Creation: Sun Oct 08 02:38:39 2017
 Charted by: Depth in Feet scaled 1:240

0	GR (GAPI)	150
6	MCAL (in)	16
6	BOREID (in)	16

140	DT (usec/ft)	40
30	SPOR (pu)	-10
0	ITT (msec)	20

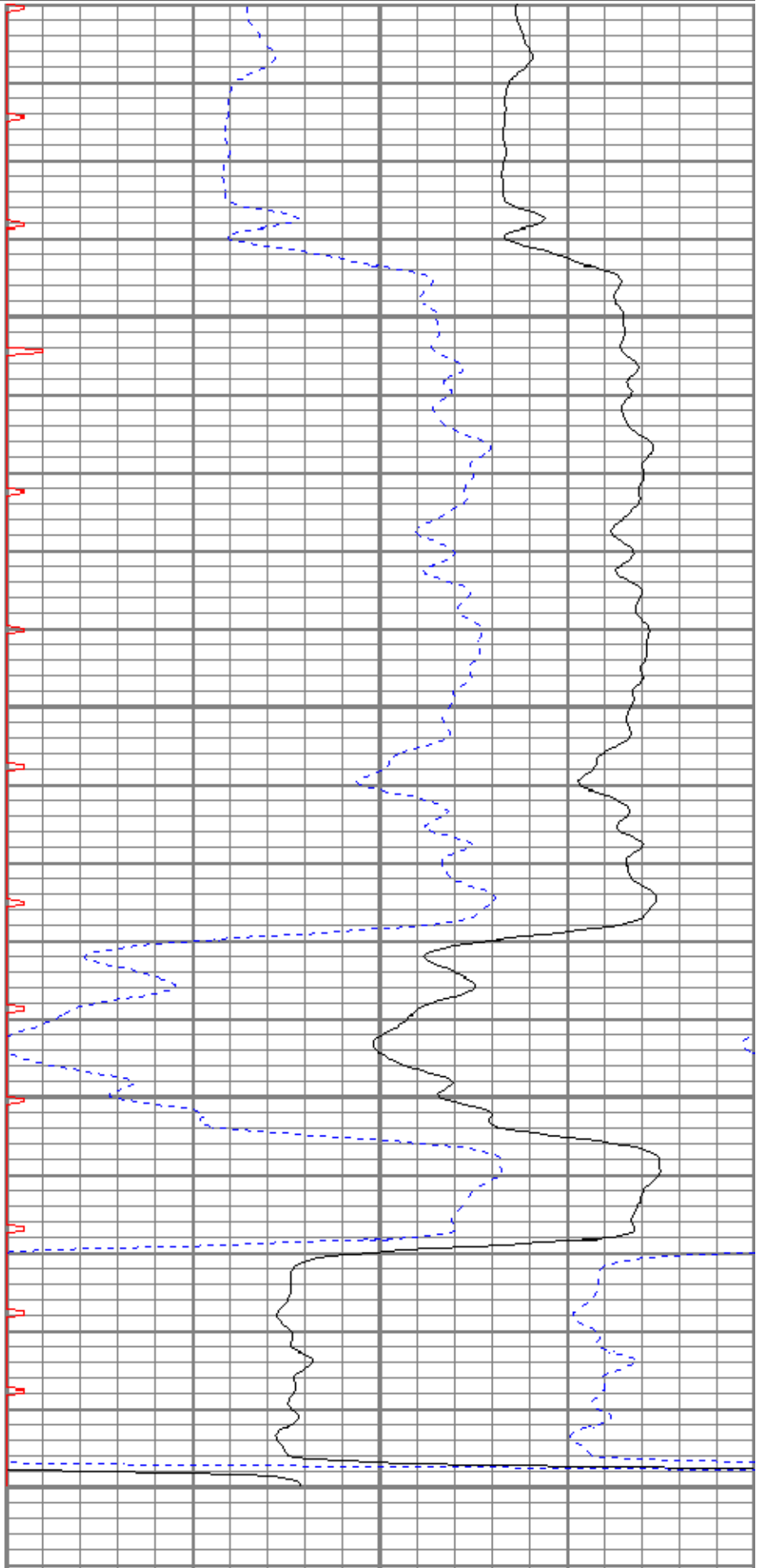


3400

3450

3500

3550



0	GR (GAPI)	150
---	-----------	-----

140	DT (usec/ft)	40
-----	--------------	----

6	MCAL (in)	16
6	BOREID (in)	16

30	SPOR (pu)	-10
0	ITT (msec)	20

Calibration Report	
Database File	trorichardson28-1oh.db
Dataset Pathname	pass4
Dataset Creation	Sun Oct 08 02:49:28 2017

Microlog Calibration Report	
Serial-Model:	1600-Pengo
Performed:	Sun Oct 08 02:36:59 2017

	Readings			References			Results	
	Zero	Cal		Zero	Cal		m	b
Normal	-0.0020	0.5820	V	0.0000	10.0000	Ohm-m	17.1222	0.0346
Inverse	-0.0023	0.7557	V	0.0000	8.2000	Ohm-m	10.8176	0.0248
Caliper	1.0301	2.2816	V	6.4000	10.0000	in	2.8767	3.4367

Gamma Ray Calibration Report		
Serial Number:	2001	
Tool Model:	OH	
Performed:	Thu Aug 03 06:10:54 2017	
Calibrator Value:	1.0	GAPI
Background Reading:	0.0	cps
Calibrator Reading:	1.0	cps
Sensitivity:	0.8000	GAPI/cps

Sensor	Offset (ft)	Schematic	Description	Length (ft)	O.D. (in)	Weight (lb)
GR	28.34		CHD-None	0.75	1.50	5.00
			GR-OH (2001)	3.56	3.25	40.00
			2001			
MCAL	21.51		ML-Pengo (1600)	6.97	3.50	100.00
MI	21.51					
MN	21.51					
WVF4	14.25		SLT-G (372)	15.71	3.50	250.00
			Sonic			
WVF3	13.25					
WVF2	10.25					
WVF1	9.25		CENT-OHlong	4.50	3.50	50.00
			Open Hole long Centralizer			

Dataset:	trorichardson28-1oh.db: field/well/run1/pass4
Total length:	31.49 ft
Total weight:	445.00 lb
O.D.:	3.50 in