



LITHO DENSITY  
NEUTRON  
LOG

Company	Taos Resources Operating Company LLC		
Well	Richardson #28-1		
Field	Unnamed		
County	Cowley		
State	Kansas		
Company	Taos Resources Operating Company LLC		
Well	Richardson #28-1		
Field	Unnamed		
County	Cowley		
State	Kansas		
Location:	API #: 15 035 24677		
	790' FSL & 1190' FEL		
Permanent Datum	SEC 28	TWP 32S	RGE 5E
Log Measured From	Ground Level	Elevation	1249'
Drilling Measured From	KB	5' AGL	
			Elevation
			DIL
			BHC
			ML
			K.B. 1254'
			D.F. 1253'
			G.L. 1249'

Date	10-07-17
Run Number	One
Depth Driller	3560'
Depth Logger	3561'
Bottom Logged Interval	3539'
Top Log Interval	350'
Casing Driller	8 5/8" @ 235'
Casing Logger	235'
Bit Size	7 7/8"
Type Fluid in Hole	Chemical
Density / Viscosity	9.5/40
PH / Fluid Loss	10.0/7.6
Source of Sample	Pit
Rm @ Meas. Temp	1.20@76degf
Rmf @ Meas. Temp	0.96@76degf
Rmc @ Meas. Temp	1.54@76degf
Source of Rmf / Rmc	Calculated
Rm @ BHT	0.78@117degf
Time Circulation Stopped	9:45 p.m.
Time Logger on Bottom	12:15 a.m.
Maximum Recorded Temperature	117degf
Equipment Number	T-729
Location	Hays, KS
Recorded By	C.Patterson
Witnessed By	Mr. Mike Pressnall

<<< Fold Here >>>

All interpretations are opinions based on inferences from electrical or other measurements and we cannot and do not guarantee the accuracy or correctness of any interpretation, and we shall not, except in the case of gross or willful negligence on our part, be liable or responsible for any loss, costs, damages, or expenses incurred or sustained by anyone resulting from any interpretation made by any of our officers, agents or employees. These interpretations are also subject to our general terms and conditions set out in our current Price Schedule.

Comments

East of Winfield(Main St. and 160 Hwy) 6.5 mi. to 151st rd., 1 south to 172nd Rd.,  
1/2 West, North into Location

Thank you for using Gemini Wireline  
785-625-1182

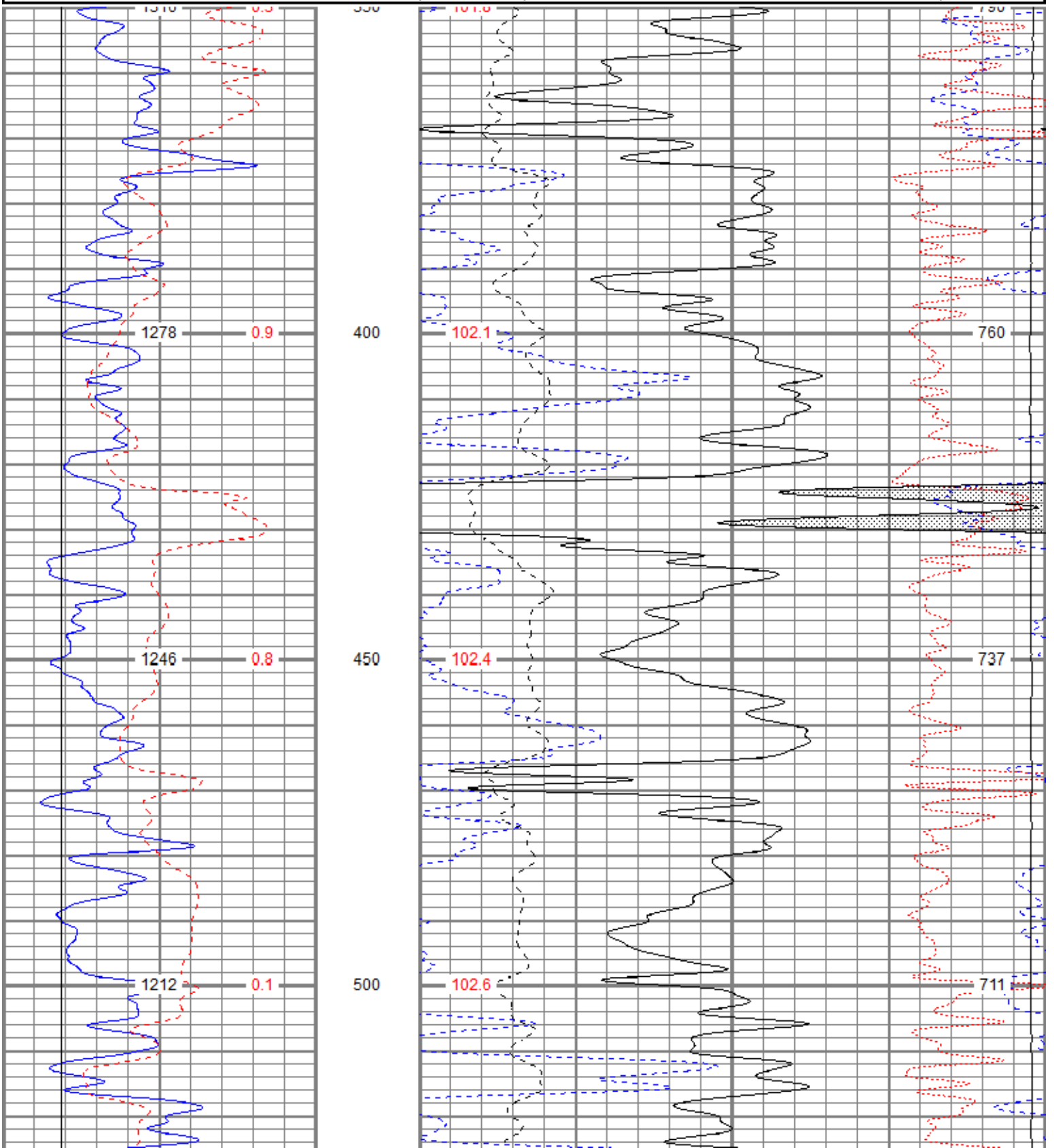


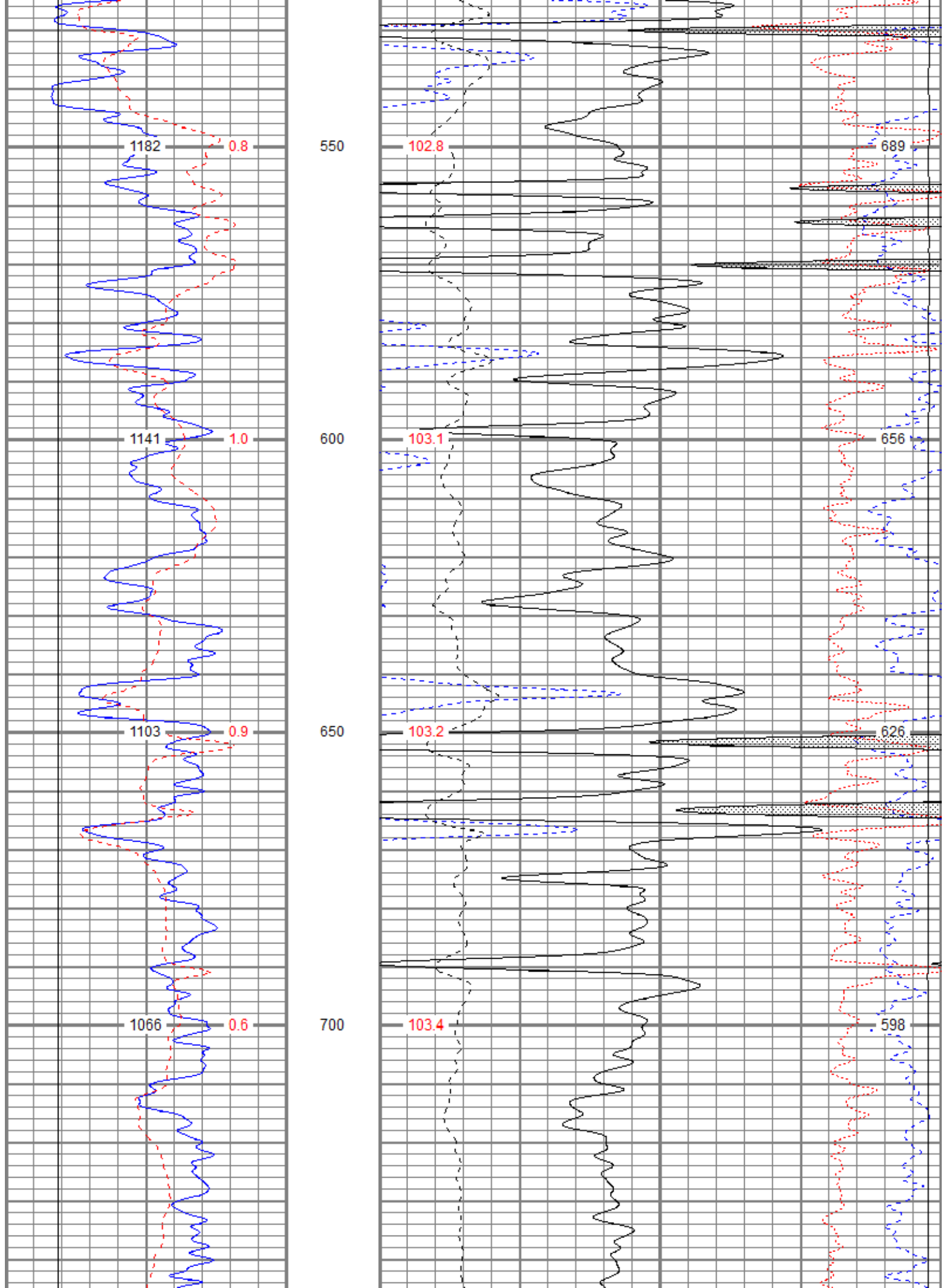
MAIN PASS

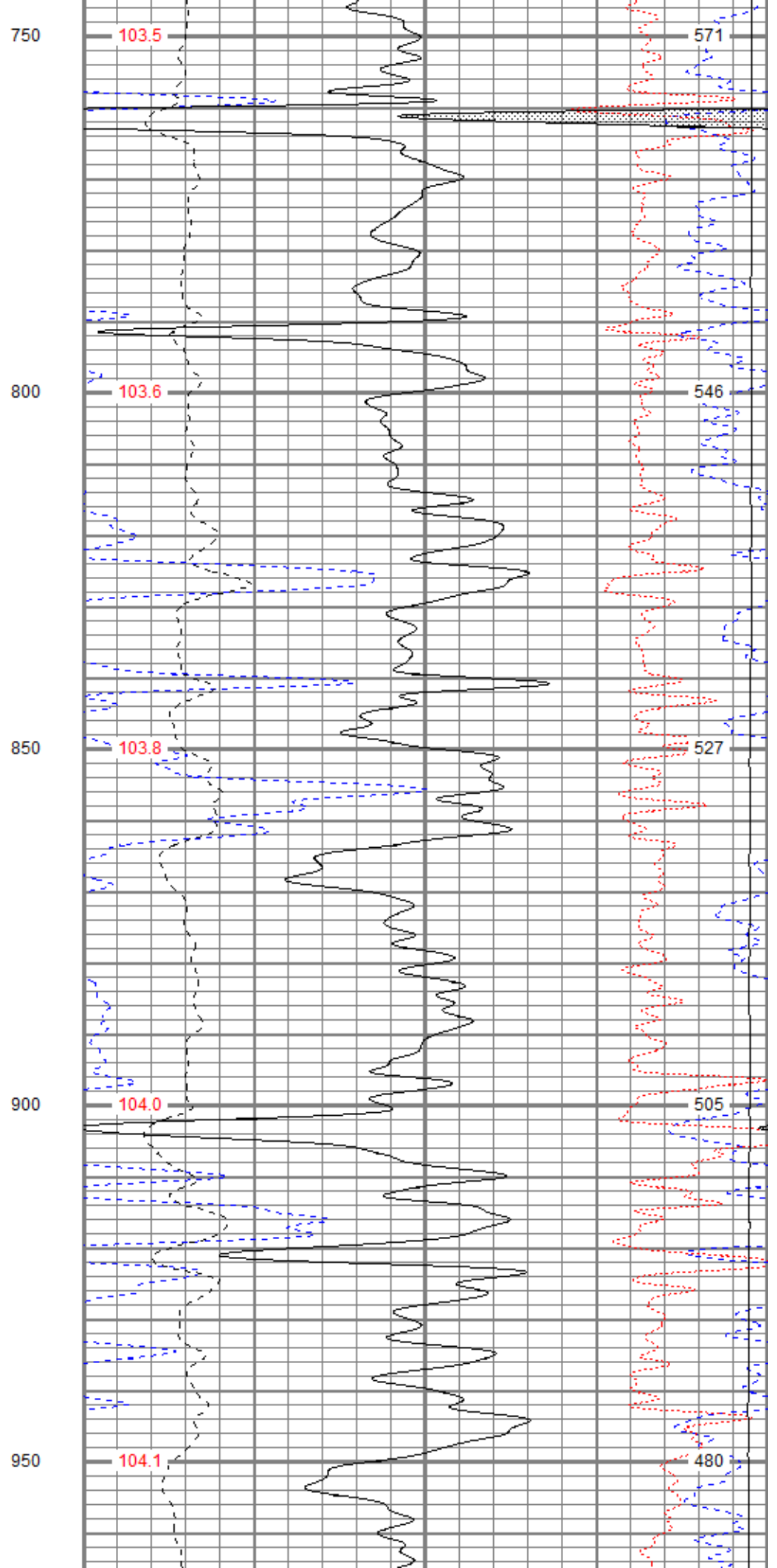
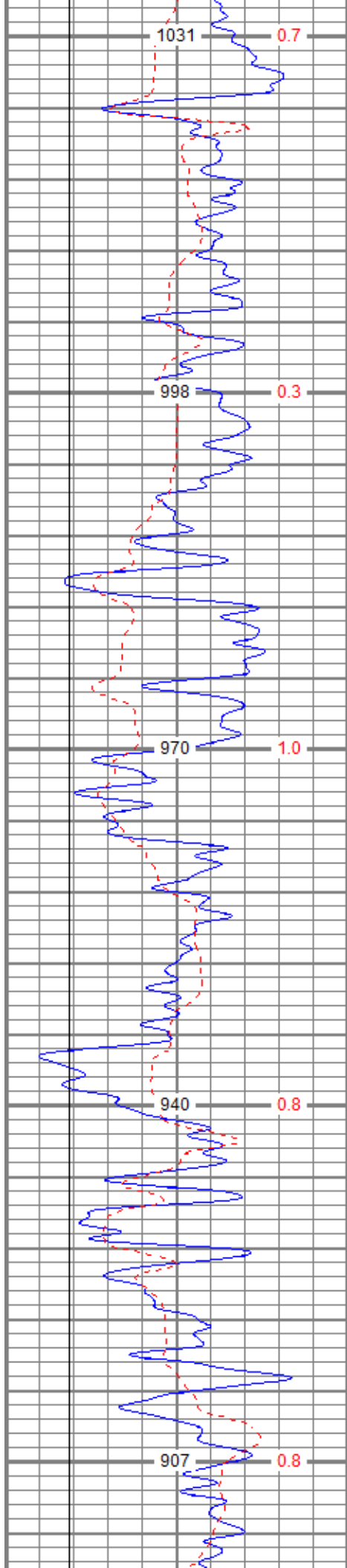
Database File    trorichardson28-1oh.db  
 Dataset Pathname   pass2.2  
 Presentation Format   digital\_kcdnl  
 Dataset Creation    Sun Oct 08 01:55:46 2017  
 Charted by         Depth in Feet scaled 1:240

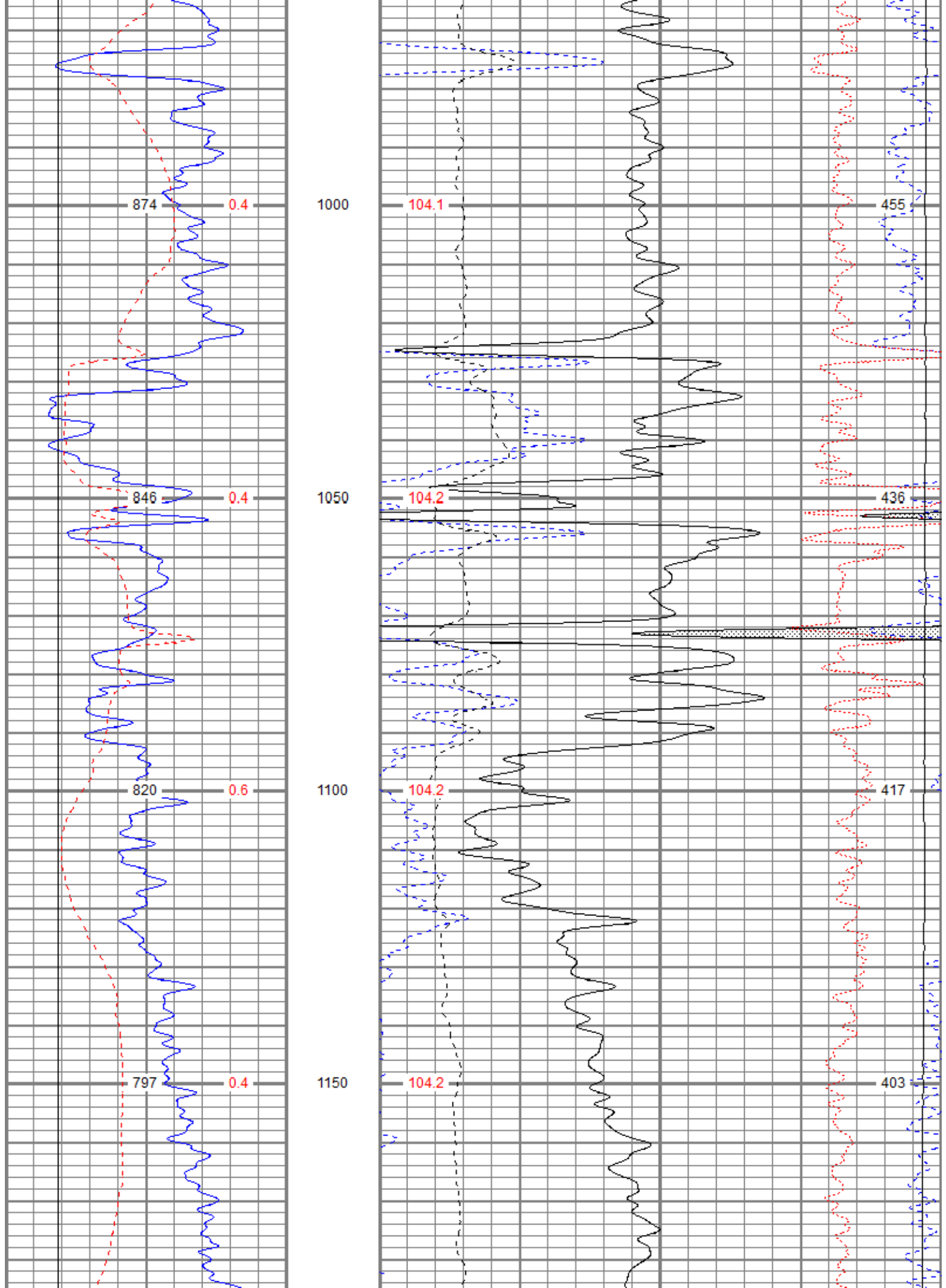
0	GR (GAPI)	150
6	DCAL (in)	16
6	BOREID (in)	16
	TBHV (ft3)	DEVI (deg)

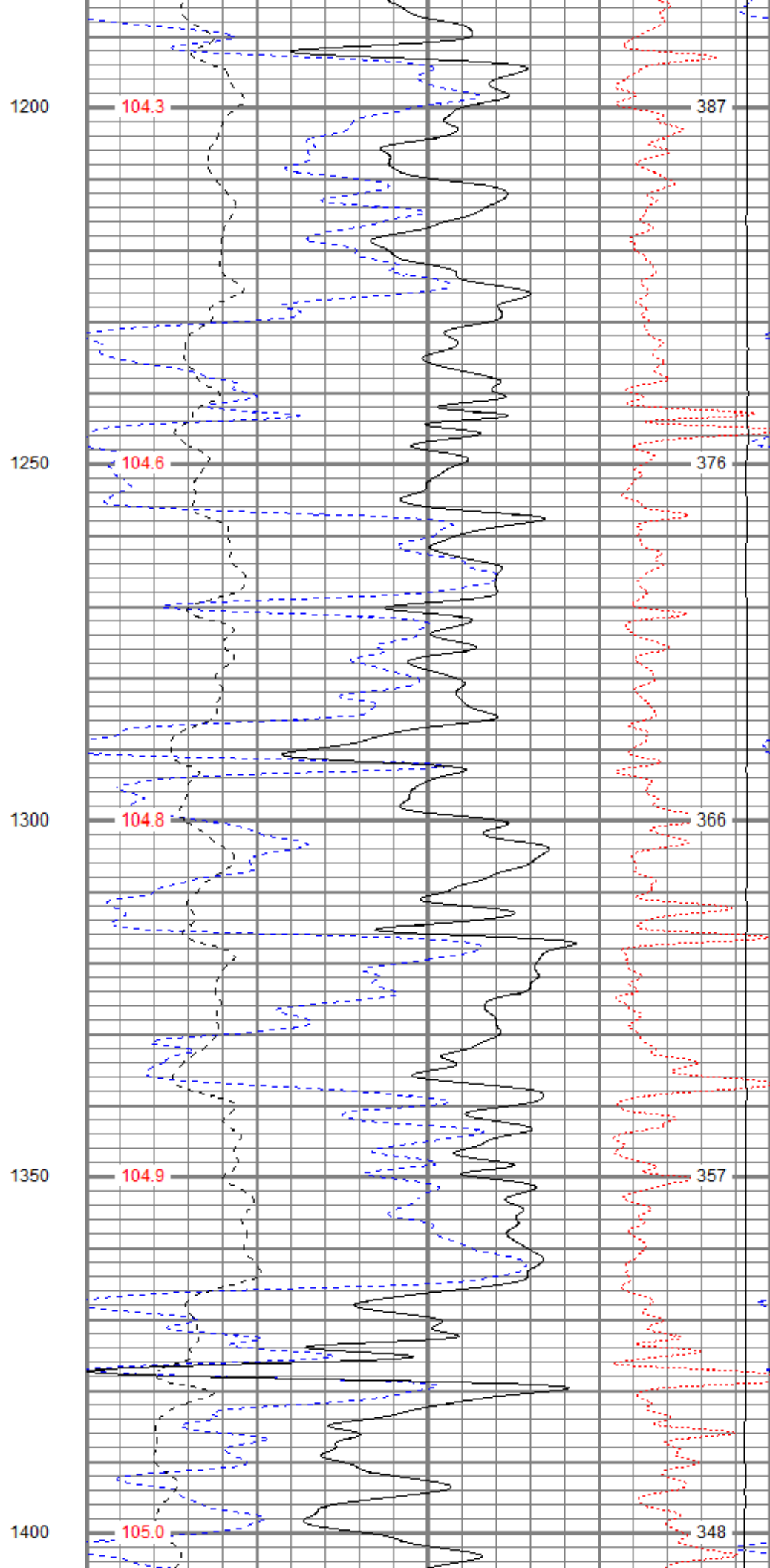
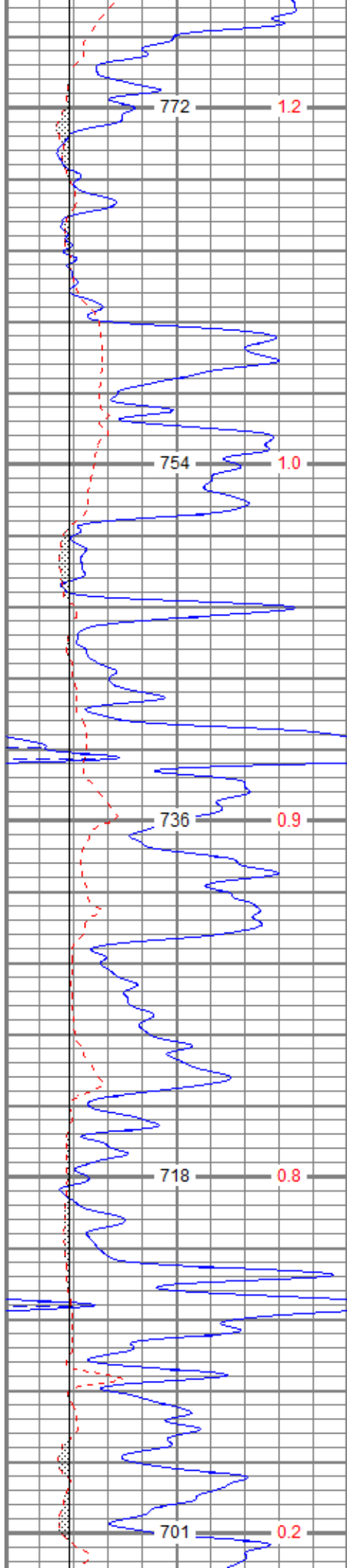
30	NPOR (pu)	-10			
30	DPOR (pu)	-10			
70	DPOR (pu)	30			
0	Pe (barn)	10	-0.25	RHOC (g/cc)	0.25
TEMP (degF)		8000		LTEN (lb)	0
					ABHV (ft3)

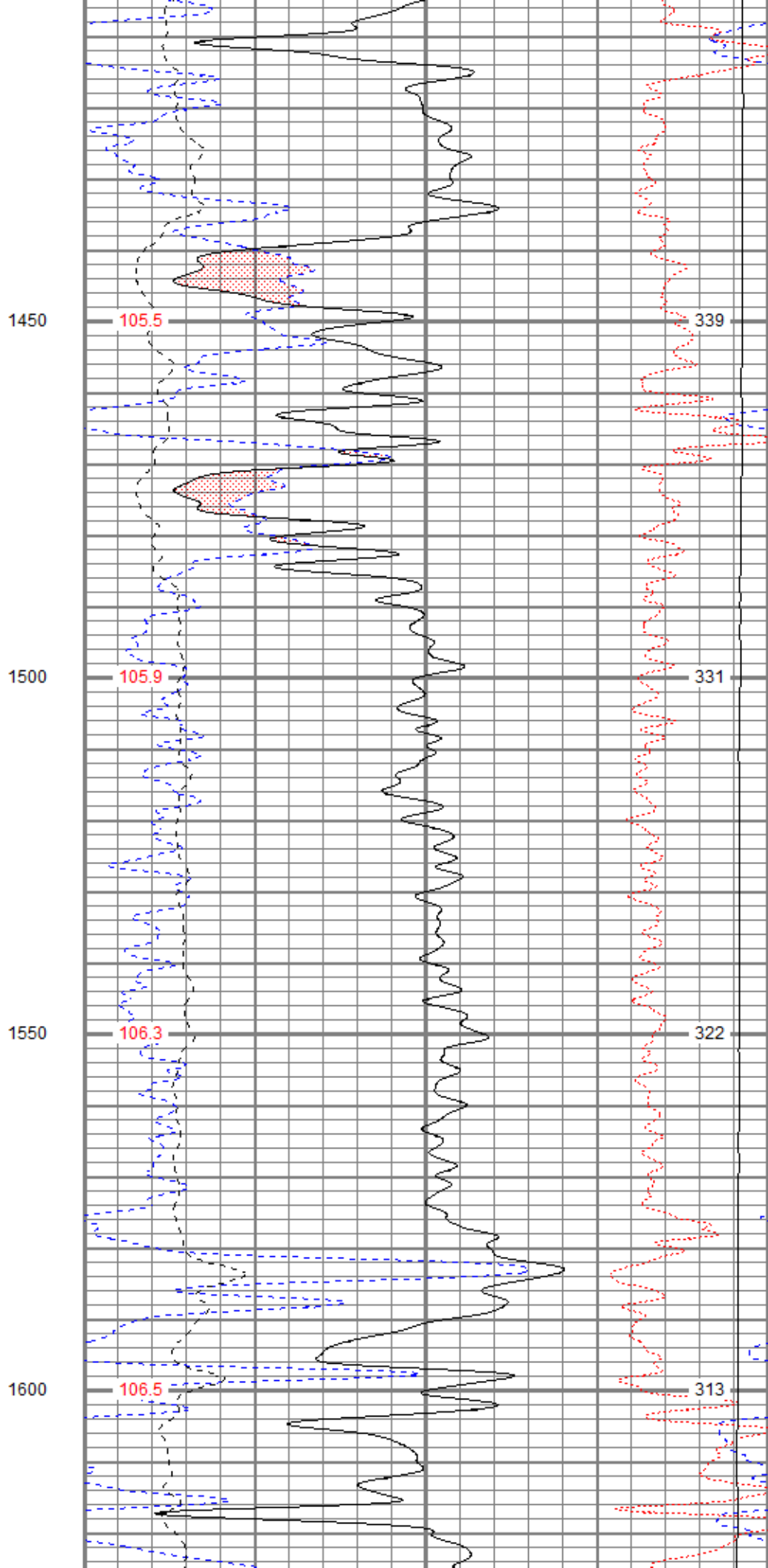
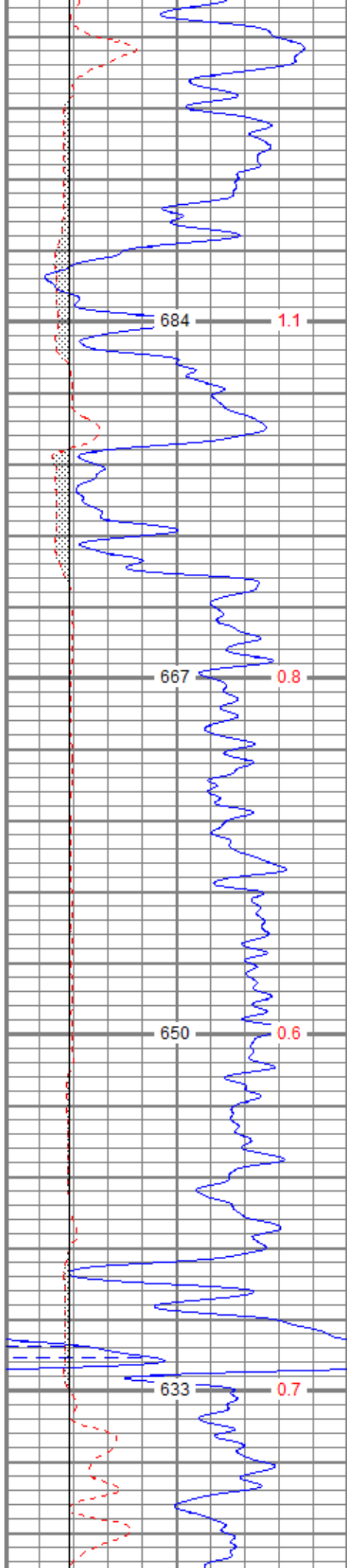


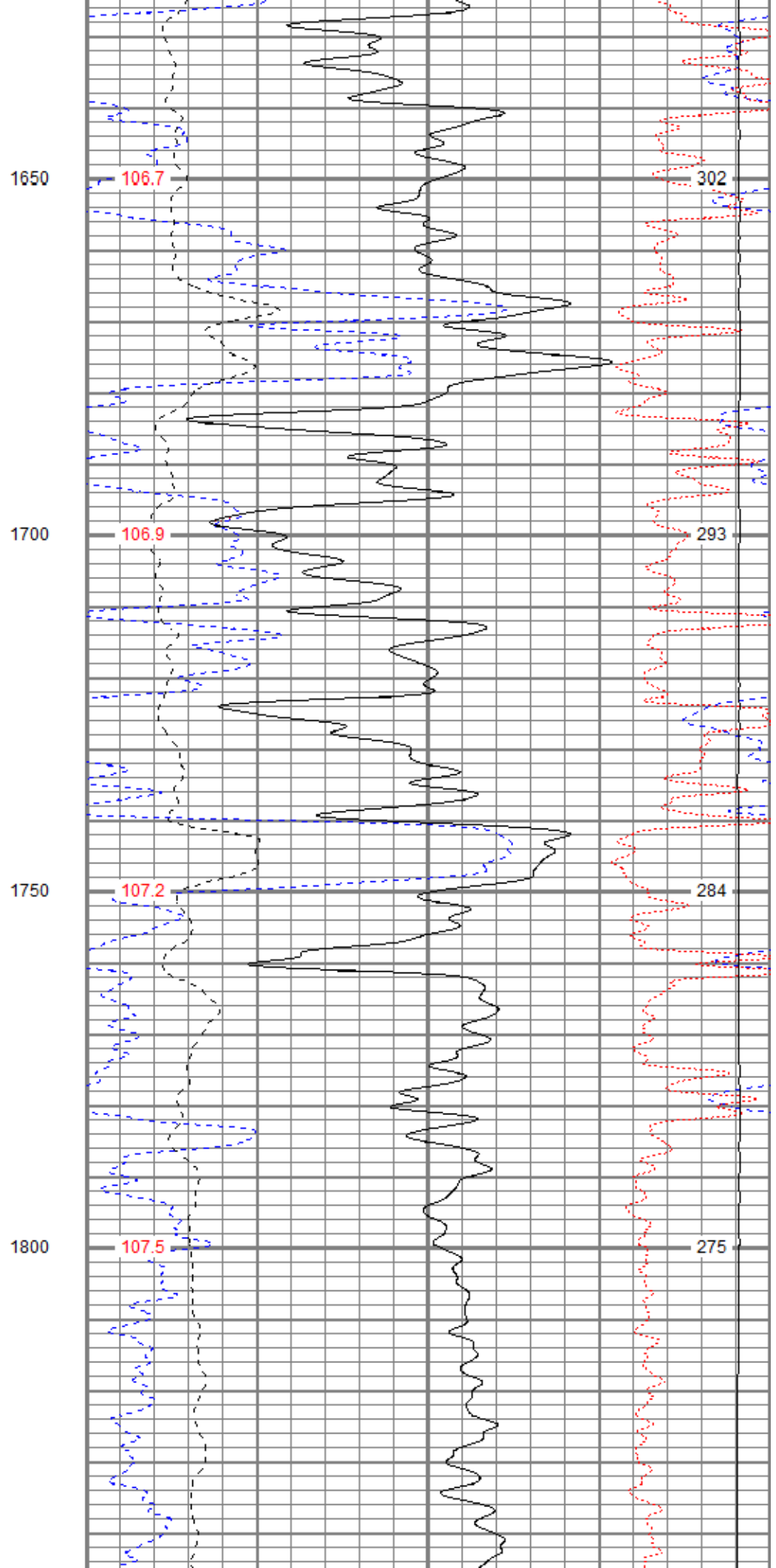
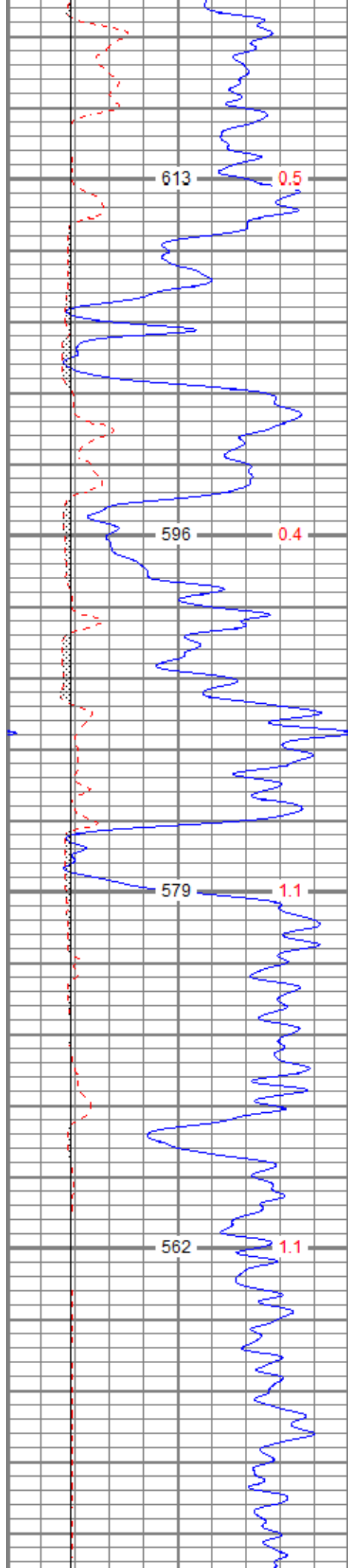


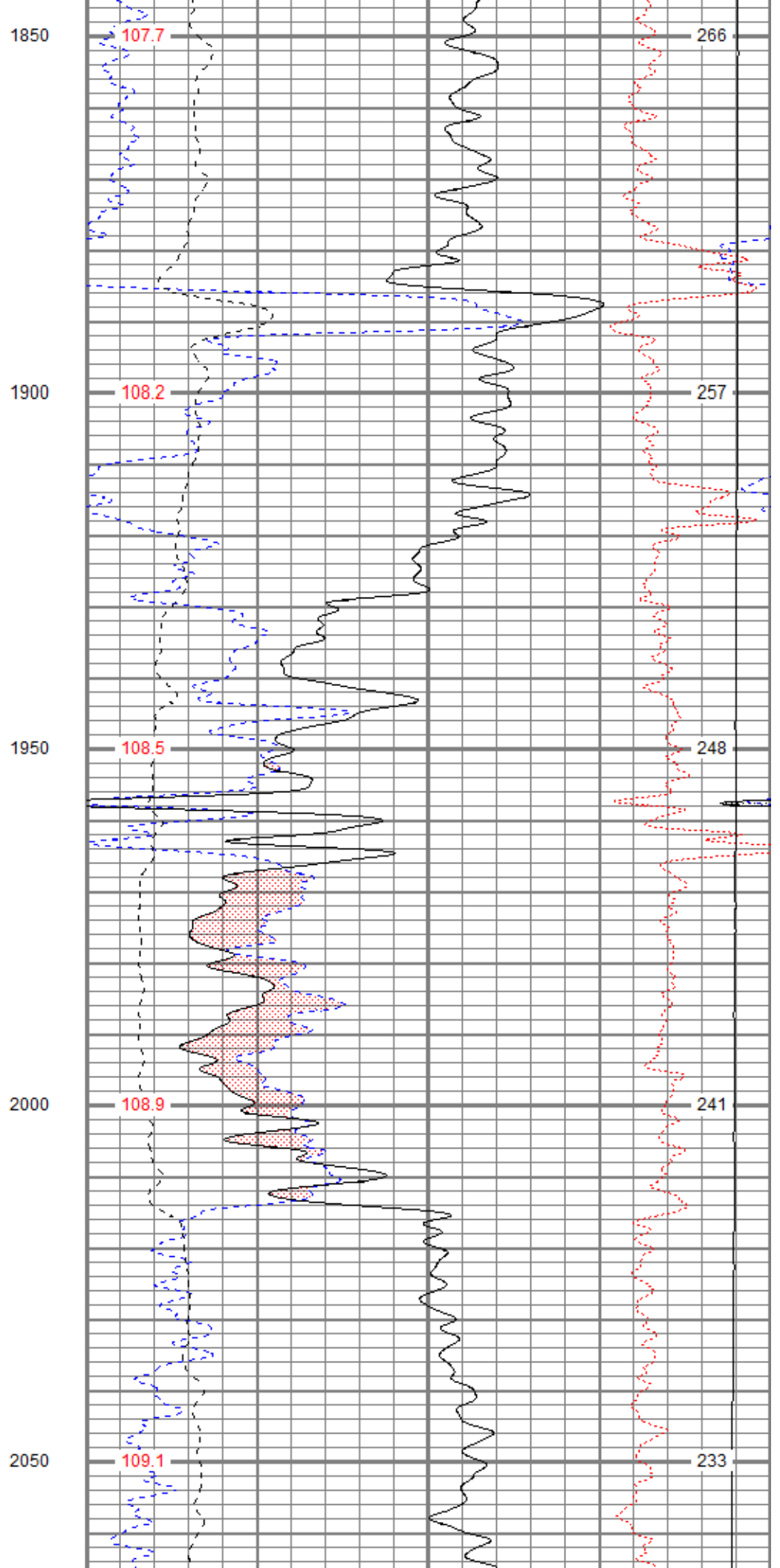
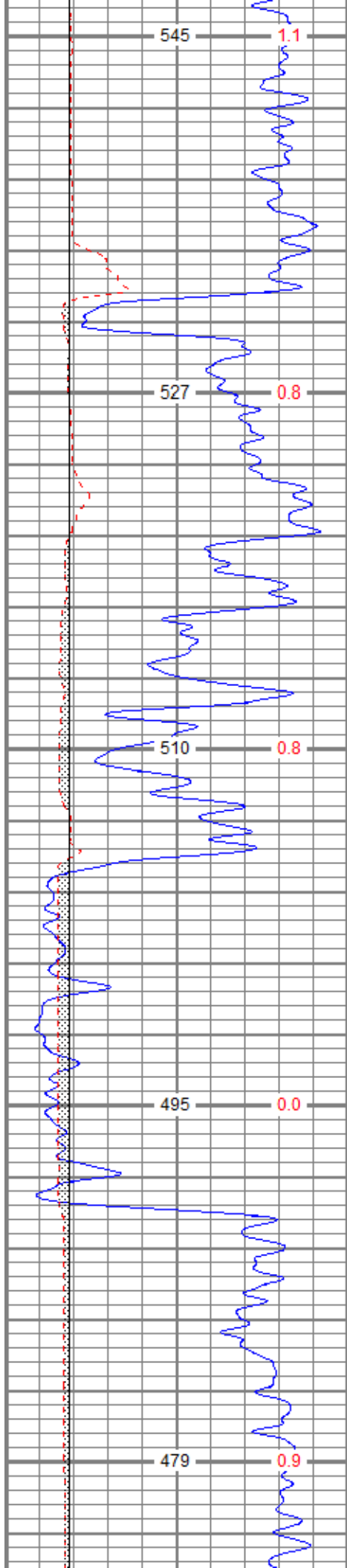


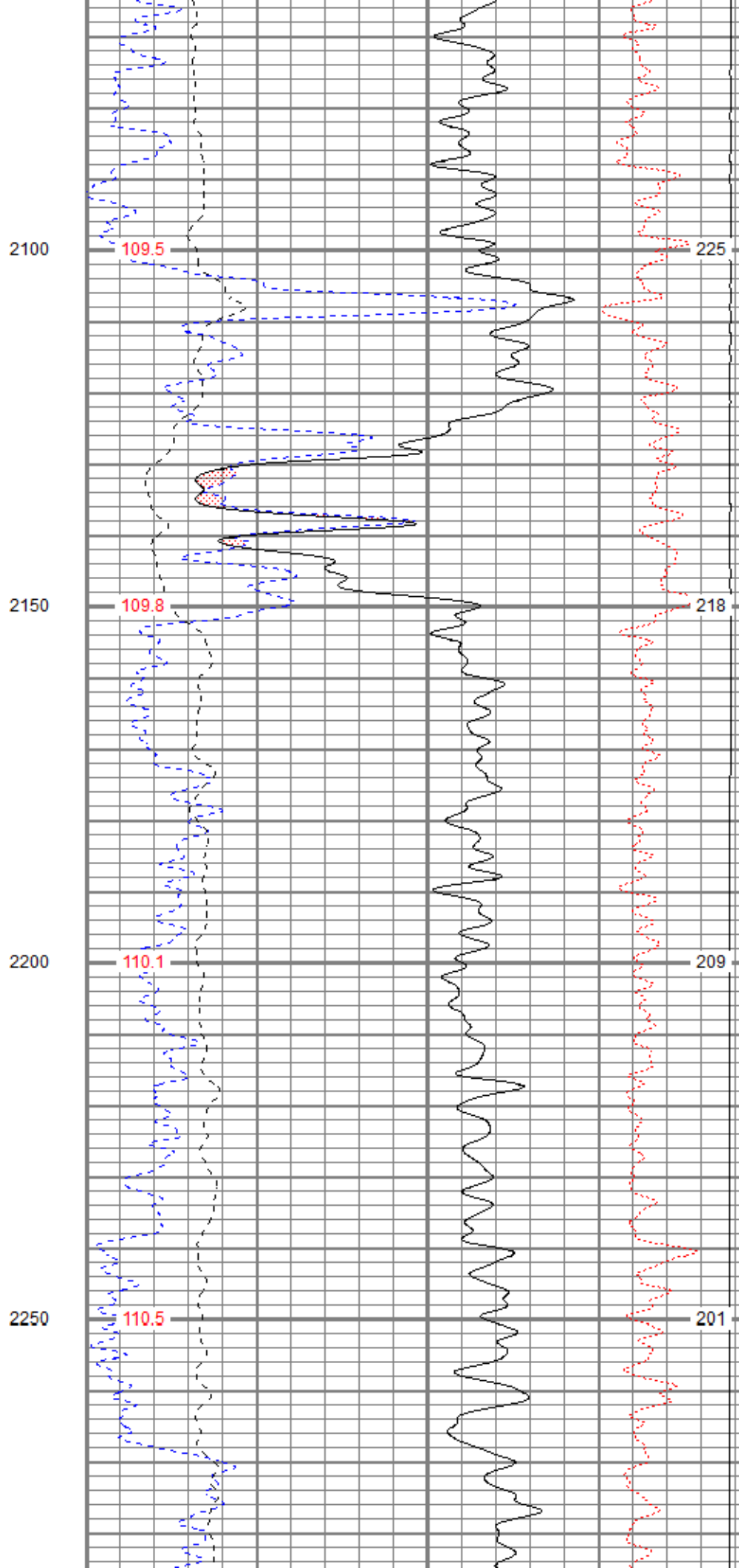
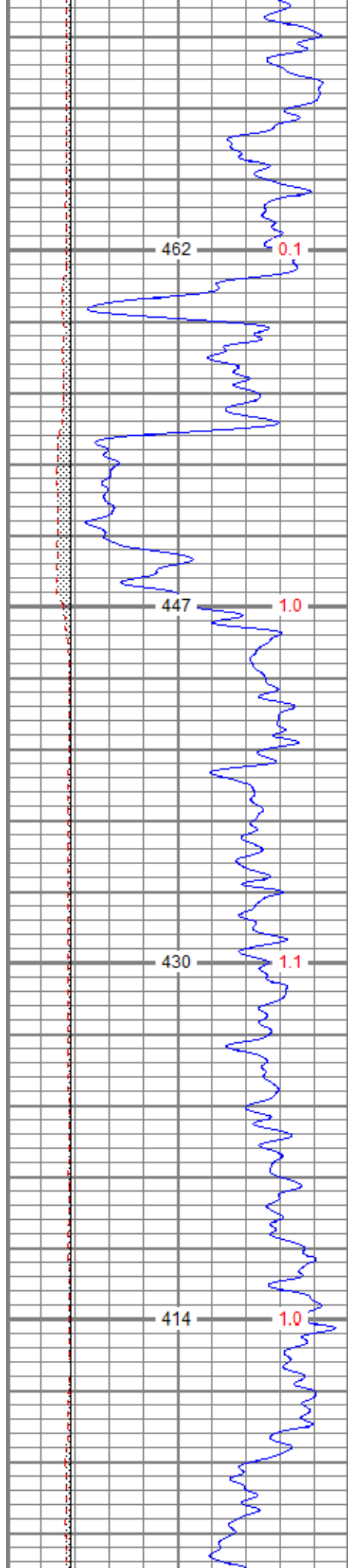


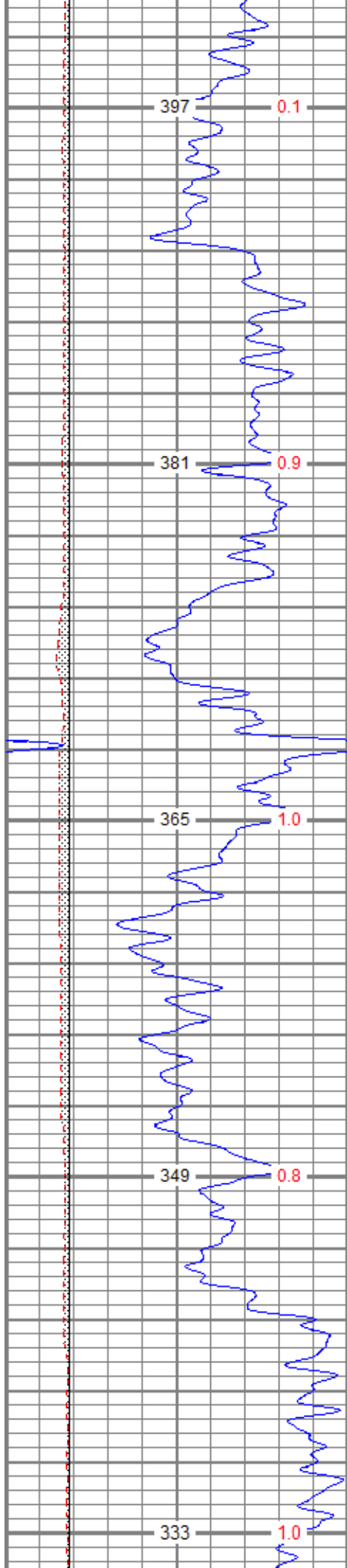












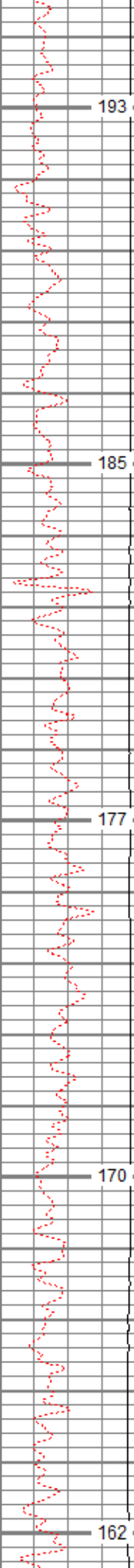
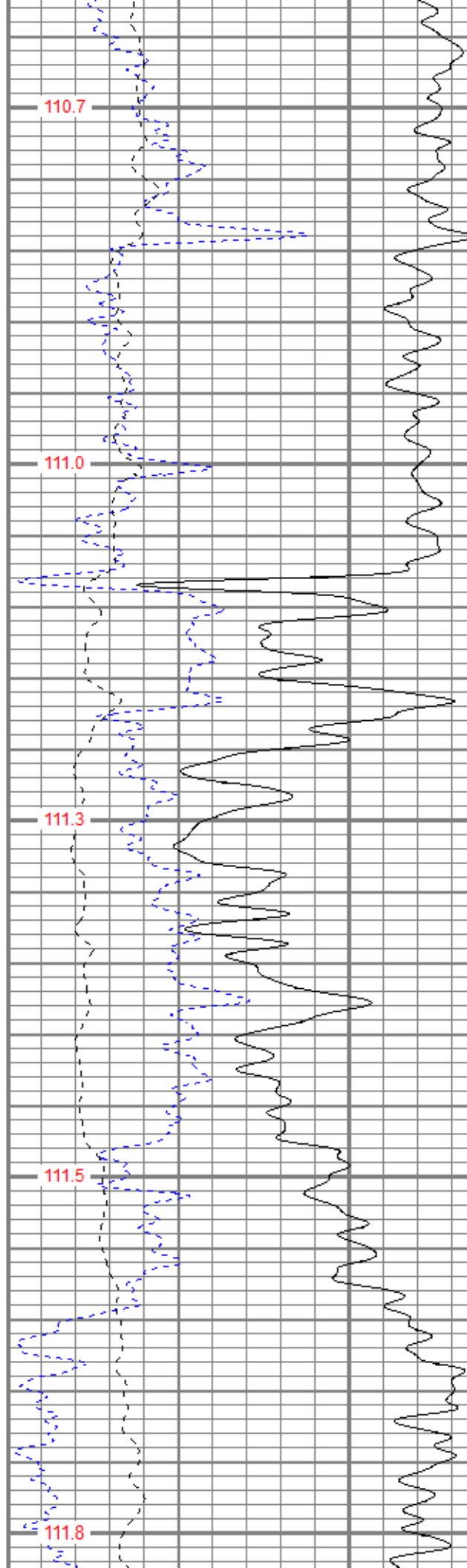
2300

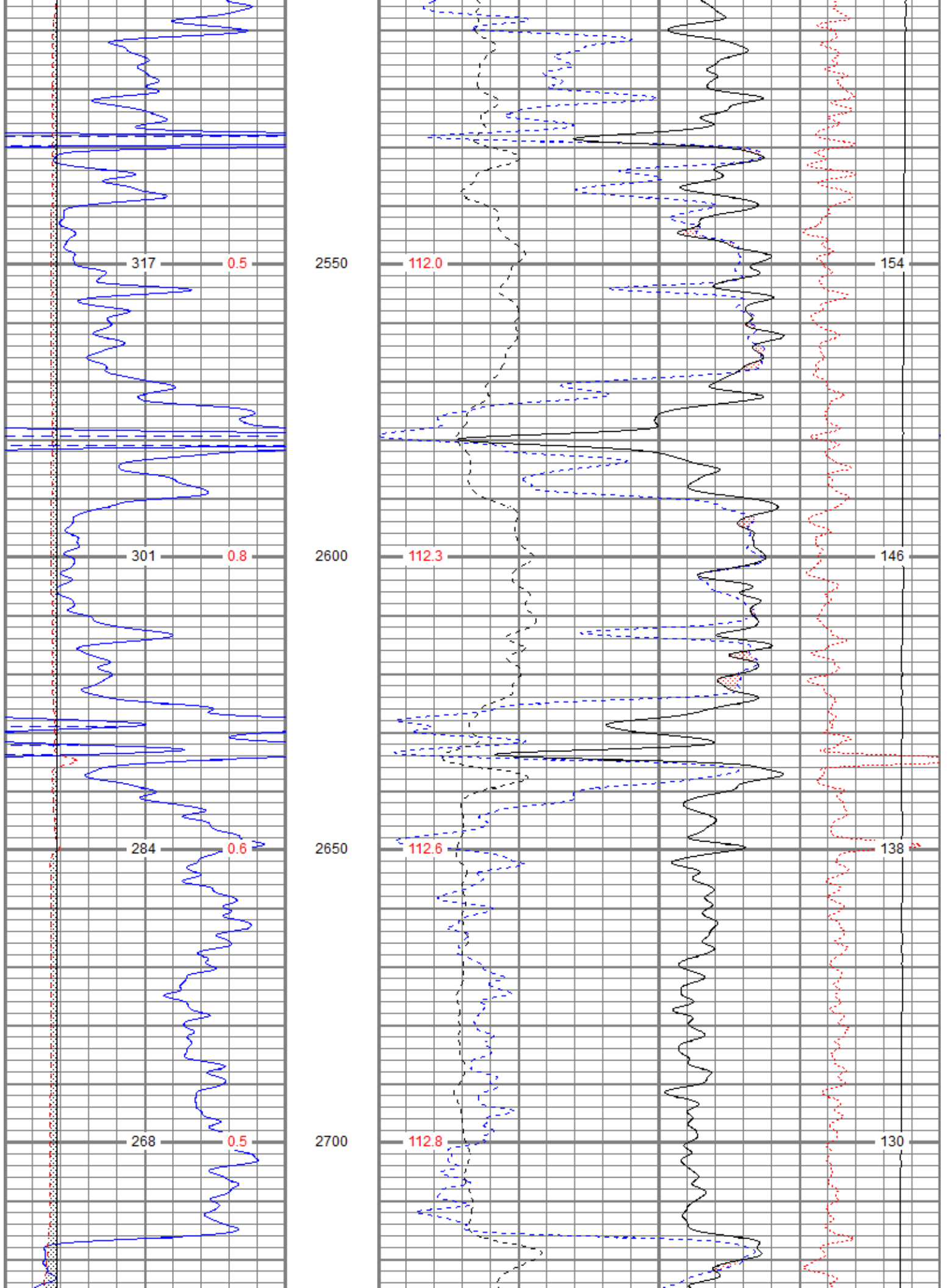
2350

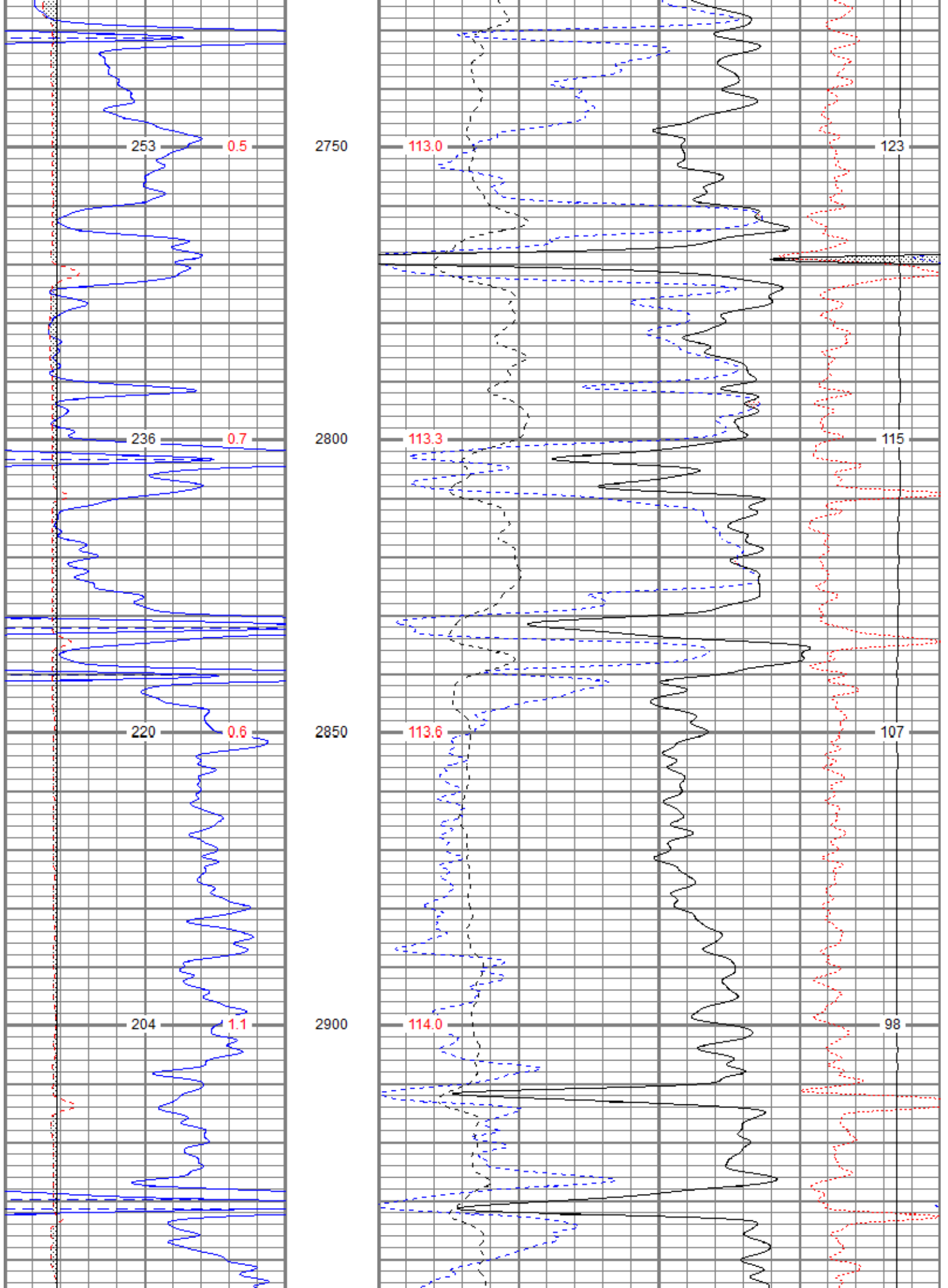
2400

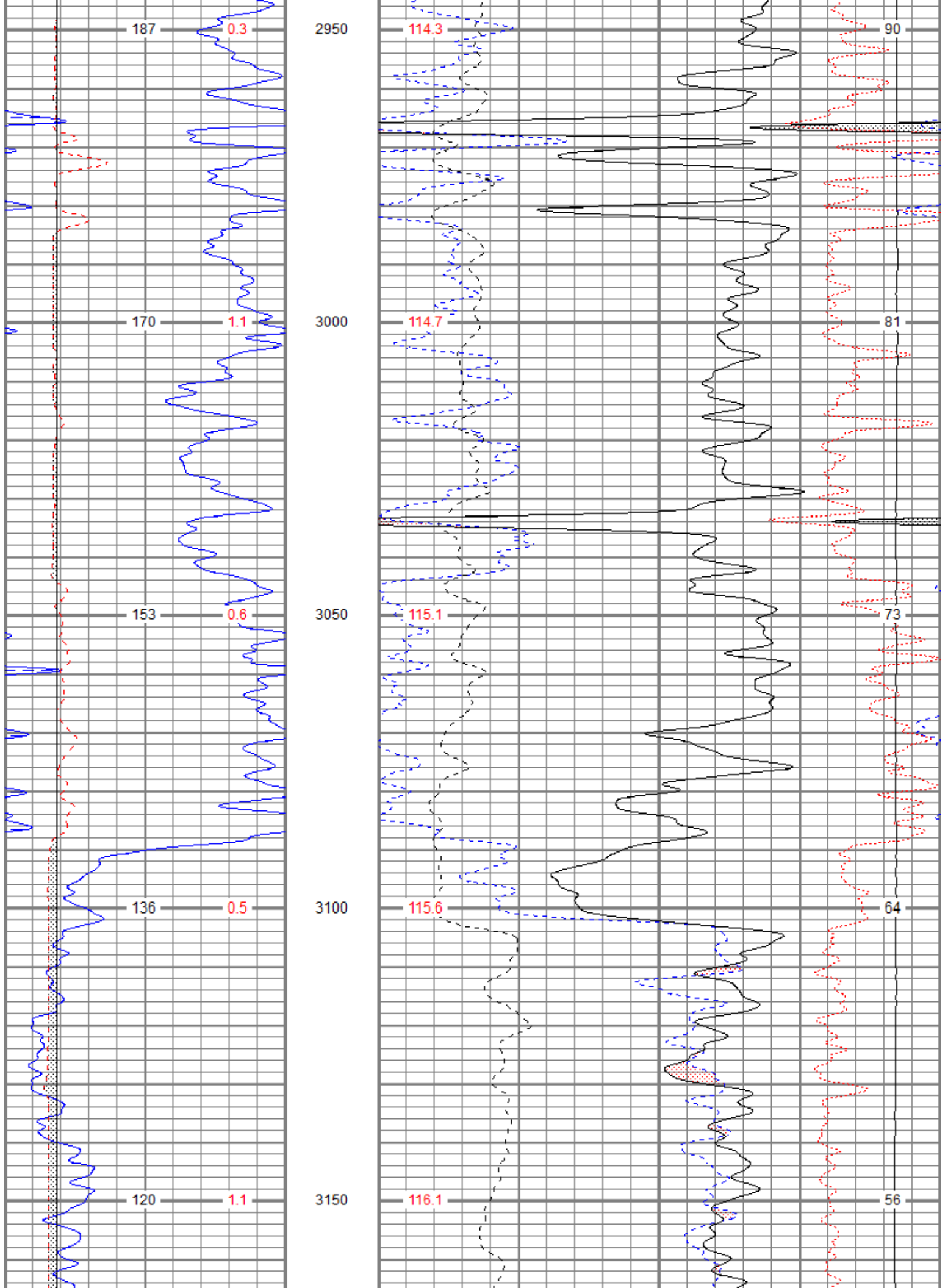
2450

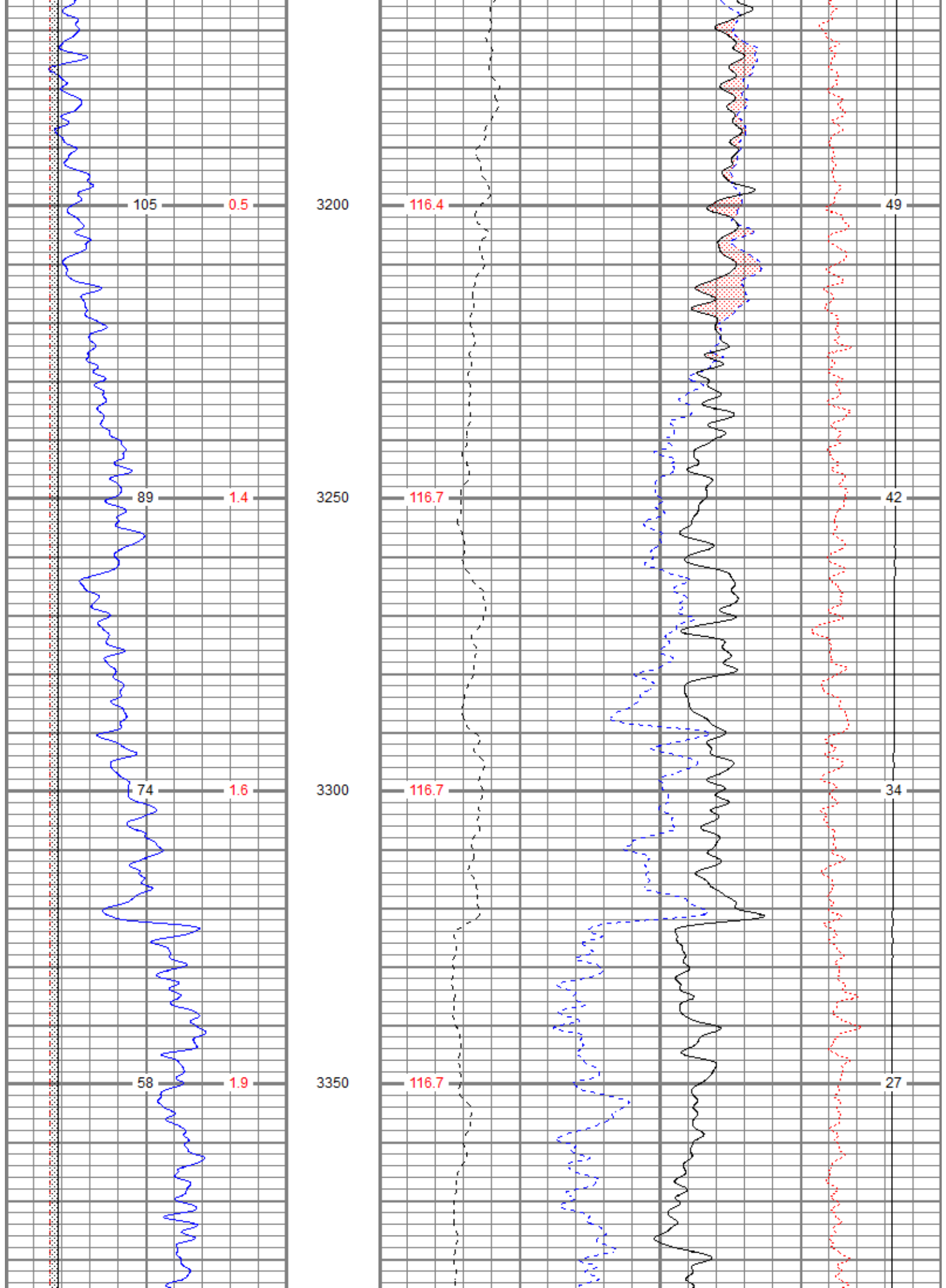
2500

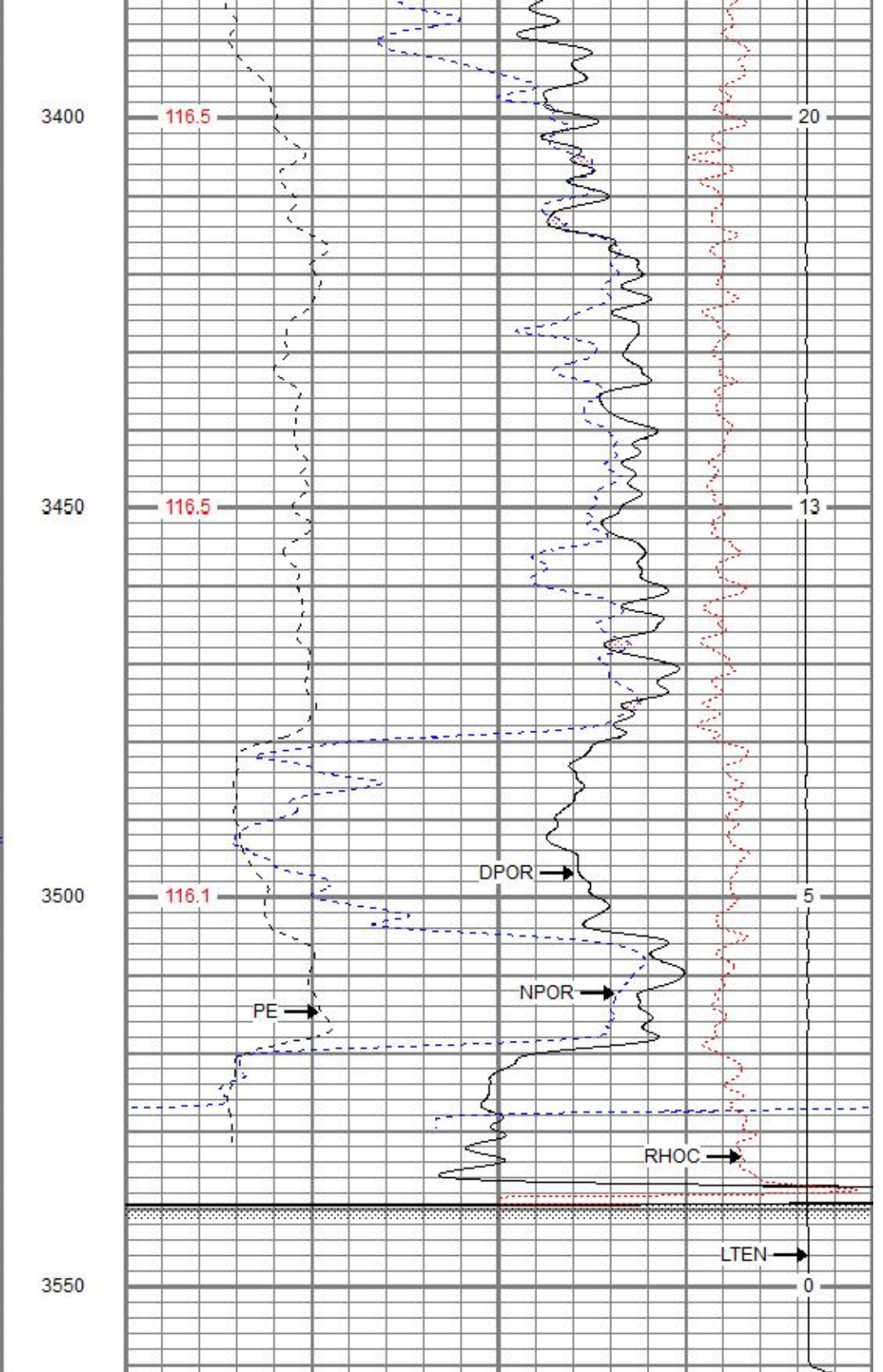
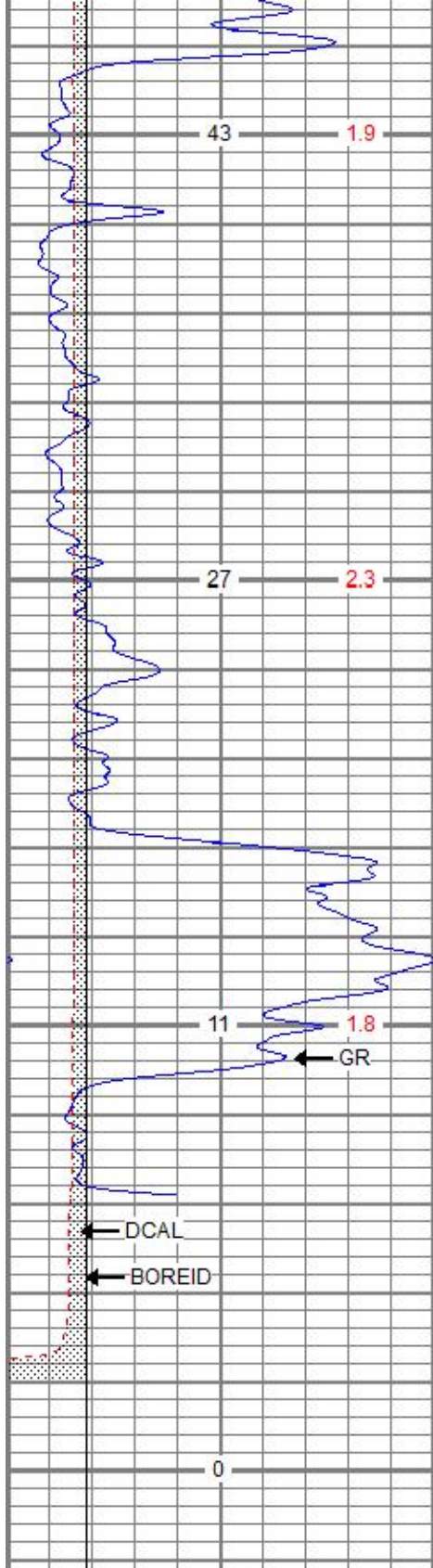












0	GR (GAPI)	150
6	DCAL (in)	16
6	BOREID (in)	16
	TBHV (ft3)	DEVI (deg)

30	NPOR (pu)	-10
30	DPOR (pu)	-10
70	DPOR (pu)	30
0	Pe (barn)	10
	TEMP (degF)	8000
	RHOC (g/cc)	0.25
	LTEN (lb)	0
	ABHV (ft3)	

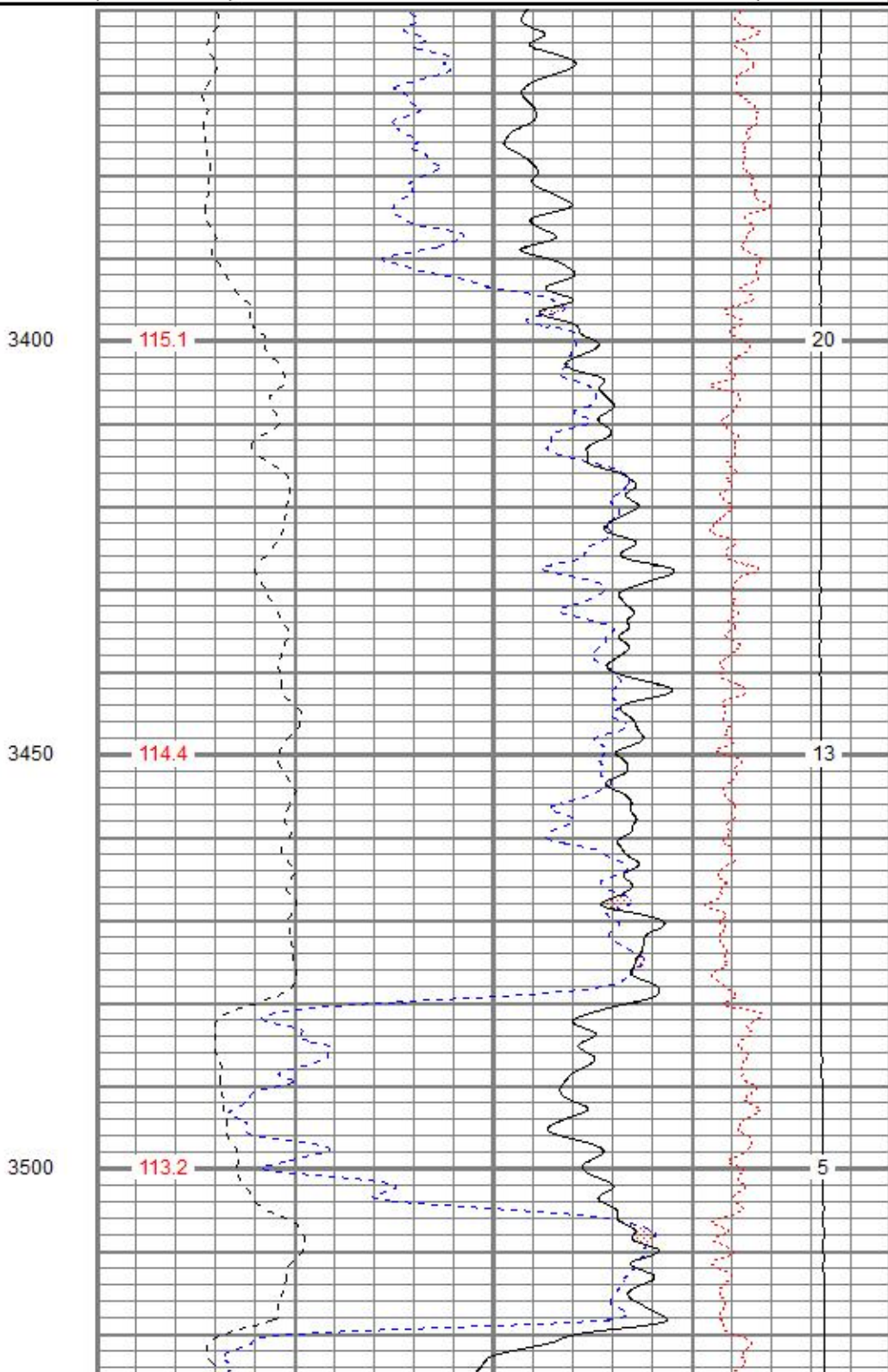
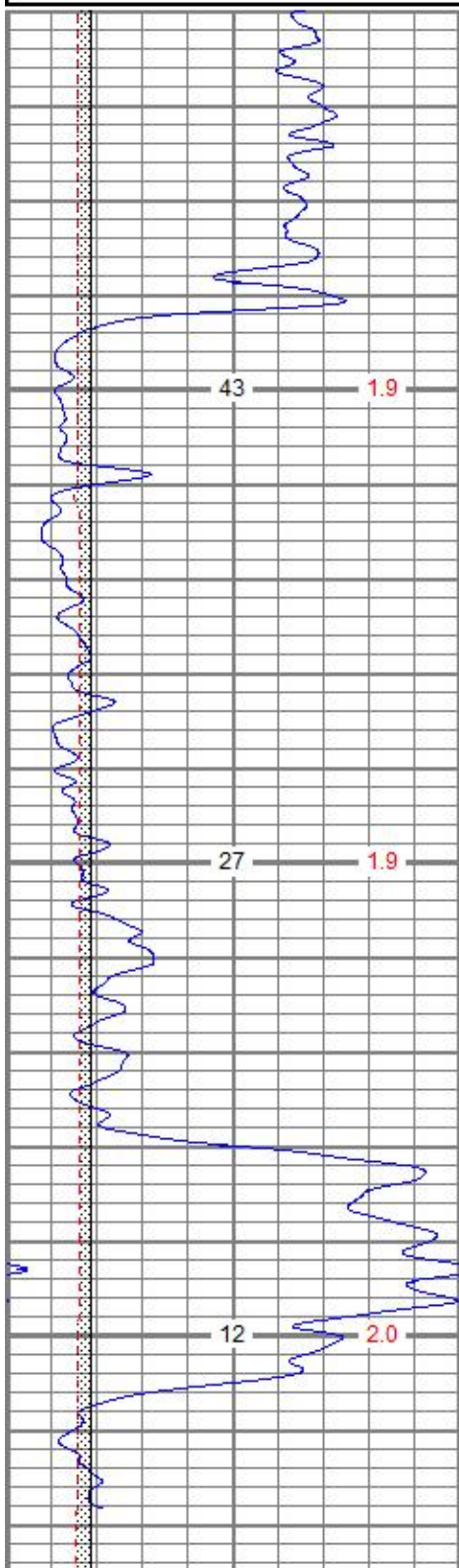


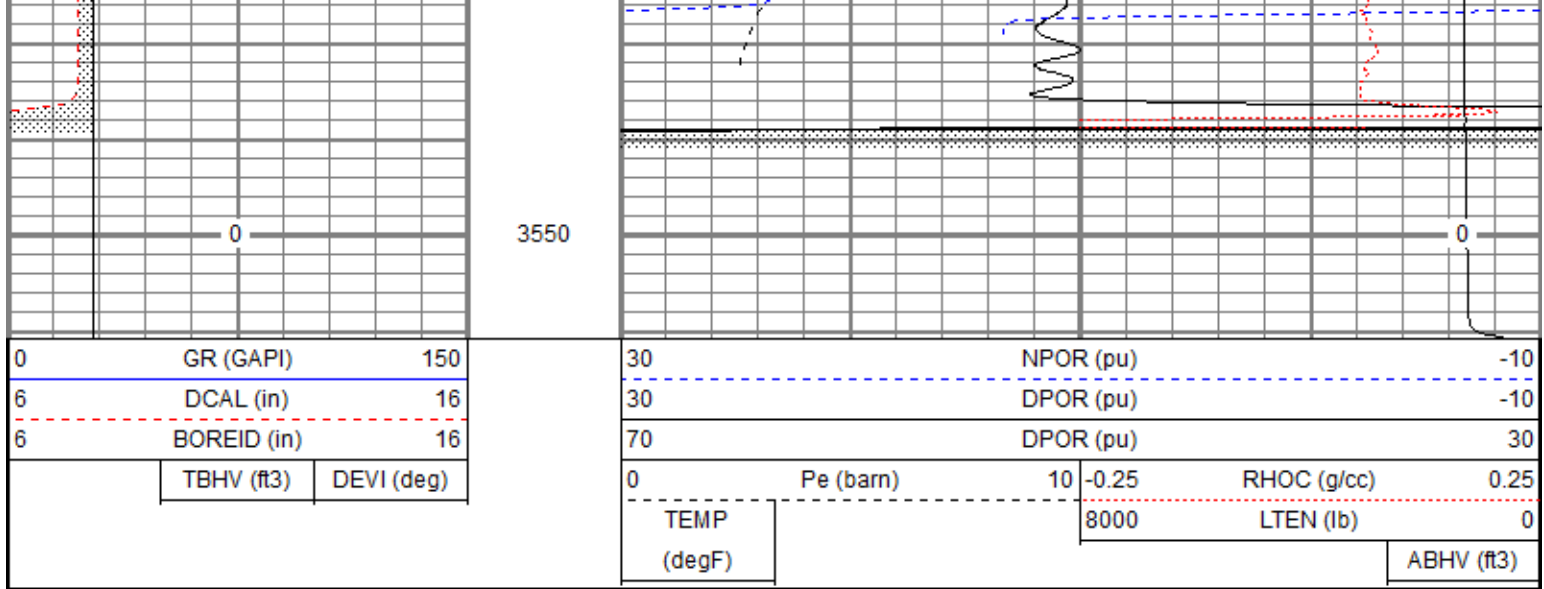
REPEAT SECTION

Database File trorchardson28-1oh.db  
 Dataset Pathname pass1.1  
 Presentation Format digital\_kcdnl  
 Dataset Creation Sun Oct 08 01:17:04 2017  
 Charted by Depth in Feet scaled 1:240

0	GR (GAPI)	150
6	DCAL (in)	16
6	BOREID (in)	16
	TBHV (ft3)	DEVI (deg)

30	NPOR (pu)	-10			
30	DPOR (pu)	-10			
70	DPOR (pu)	30			
0	Pe (barn)	10	-0.25	RHOC (g/cc)	0.25
	TEMP (degF)	8000	LTEN (lb)	0	ABHV (ft3)





Calibration Report			
Database File	trorichardson28-1oh.db		
Dataset Pathname	pass2.2		
Dataset Creation	Sun Oct 08 01:55:46 2017		

**Dual Induction Calibration Report**

Serial-Model:	5375-G
Surface Cal Performed:	Tue Aug 15 10:21:23 2017
Downhole Cal Performed:	Tue Aug 15 10:22:14 2017
After Survey Verification Performed:	Tue Aug 15 10:22:14 2017

Surface Calibration								
Loop:	Readings			References			Results	
	Air	Loop		Air	Loop		m	b
Deep	-0.003	0.635	V	0.000	350.000	mmho/m	548.445	1.715
Medium	-0.001	0.717	V	0.000	400.000	mmho/m	556.583	0.684
Internal:	Zero	Cal		Zero	Cal		m	b
Deep	-0.003	0.635	V	0.000	350.000	mmho/m	548.268	1.663
Medium	-0.001	0.718	V	0.000	400.000	mmho/m	556.234	0.694

Downhole Calibration								
Internal:	Readings			References			Results	
	Zero	Cal		Zero	Cal		m	b
Deep	0.131	349.928	mmho/m	0.052	350.165	mmho/m	1.001	-0.079
Medium	-0.084	400.178	mmho/m	-0.010	400.241	mmho/m	1.000	0.073
Shallow	2.425	0.005	V	500.000	2.000	Ohm-m	205.838	0.894

After Survey Verification								
Internal:	Readings			Targets			Results	
	Zero	Cal		Zero	Cal		m'	b'
Deep	0.000	0.000	mmho/m	0.131	349.928	mmho/m	1.001	-0.079
Medium	0.000	0.000	mmho/m	-0.084	400.178	mmho/m	1.000	0.073
Shallow	0.000	0.000	Ohm-m	500.000	2.000	Ohm-m	1.000	0.000

**Neutron Calibration Report**

Serial Number:	2017
----------------	------

Tool Model: lithgearhart  
 Performed: (Not Performed)  
 Calibrator Value: 1 NAPI  
 Calibrator Reading: 1 cps  
 Sensitivity: 1 NAPI/cps

Temperature Calibration Report

Serial Number: WithMC  
 Tool Model: WMC  
 Performed: (Not Performed)

	Reference	Reading
Low Reference:	0.00 degF	0.00 degF
High Reference:	1.00 degF	1.00 degF
Gain:	1.00	
Offset:	0.00	
Delta Spacing	1	

Inclinometer Calibration Report

Performed: Mon Aug 07 09:05:18 2017

	Low Read.	High Read.	Low Ref.	High Ref.	
X Accelerometer	205.00	1843.00	-1.00	1.00	gee
Y Accelerometer	205.00	1843.00	-1.00	1.00	gee
Z Accelerometer					gee

Gamma Ray Calibration Report

Serial Number: WithMC  
 Tool Model: WMC  
 Performed: (Not Performed)

Calibrator Value: 1.0 GAPI  
 Background Reading: 0.0 cps  
 Calibrator Reading: 1.0 cps  
 Sensitivity: 1.0000 GAPI/cps

Sensor	Offset (ft)	Schematic	Description	Length (ft)	O.D. (in)	Weight (lb)
GR	40.07		CHD-STD	0.50	1.69	1.00
ACCY	38.91		ADT-WMC (WithMC)	4.58	3.50	120.00
ACCX	38.91		Admyr Telemetry With Mudcell			
SSTAT	38.49					
PSTAT	37.66					
ASTAT	37.66					
GRD	36.82		NEU-lithgearhart (2017)	5.65	3.50	85.00
TEMP	36.82		gearhart for litho			
NEU	33.46					
LStat	24.30					
LS8	23.64					
LS7	23.64					
LS6	23.64		ADT1LITH-A (1)	9.29	3.50	240.00

LS5	23.64		21.47	4.00	345.00
LS4	23.64				
LS3	23.64				
LS2	23.64				
LS1	23.64				
LSV	23.64				
LSD	23.62				
SSV	23.43				
SS8	23.43				
SS7	23.43				
SS6	23.43				
SS5	23.43				
SS4	23.43				
SS3	23.43				
SS2	23.43				
SS1	23.43				
DCAL	23.37				
SSD	23.04				
SP	10.60				
CILD	10.60				
CILM	6.89				
RLL3	1.70	Dataset: trorichardson28-1oh.db: field/well/run1/pass2.2 Total length: 41.49 ft Total weight: 791.00 lb O.D.: 4.00 in			
TR_Mon	0.00				