



**COMPENSATED DENSITY
NEUTRON
LOG**

Company	Bickle Energies, LLC	Company	Bickle Energies, LLC
Well	Wheatland #8-3	Well	Wheatland #8-3
Field	N/A	Field	N/A
County	Gove	County	Gove
State	Kansas	State	Kansas
Location:	1310' FSL & 455' FEL	API #:	15 063 22314
Permanent Datum	SEC 8 TWP 14S RGE 32W	Ground Level	Elevation 2963'
Log Measured From	KB 10' AGL	Drilling Measured From	KB
Other Services	BCS DIL ML	Elevation	K.B. 2973' D.F. 2972' G.L. 2963'

Date	09-02-17
Run Number	One
Depth Driller	4725'
Depth Logger	4726'
Bottom Logged Interval	4704'
Top Log Interval	3750'
Casing Driller	8 5/8" @ 234'
Casing Logger	234'
Bit Size	7 7/8"
Type Fluid in Hole	Chemical
Density / Viscosity	9.2/56
PH / Fluid Loss	10/8.8
Source of Sample	Pit
Rm @ Meas. Temp	0.50@86degf
Rmf @ Meas. Temp	0.40@86degf
Rmc @ Meas. Temp	0.64@86degf
Source of Rmf / Rmc	Calculated
Rm @ BHT	0.35@122degf
Time Circulation Stopped	11:00 a.m
Time Logger on Bottom	2:15 p.m
Maximum Recorded Temperature	122degf
Equipment Number	T729
Location	Hays, KS
Recorded By	Casey Patterson
Witnessed By	Mr. Keith Reavis

<<< Fold Here >>>

All interpretations are opinions based on inferences from electrical or other measurements and we cannot and do not guarantee the accuracy or correctness of any interpretation, and we shall not, except in the case of gross or willful negligence on our part, be liable or responsible for any loss, costs, damages, or expenses incurred or sustained by anyone resulting from any interpretation made by any of our officers, agents or employees. These interpretations are also subject to our general terms and conditions set out in our current Price Schedule.

Comments

South out of Oakley on Hwy. 83 20 mi to Jayhawk Rd.,
Then 4 mi. East to 14 Rd., Then North 1/2 mi. West into Location

Thanks for using Gemini Wireline LLC
785-625-1182



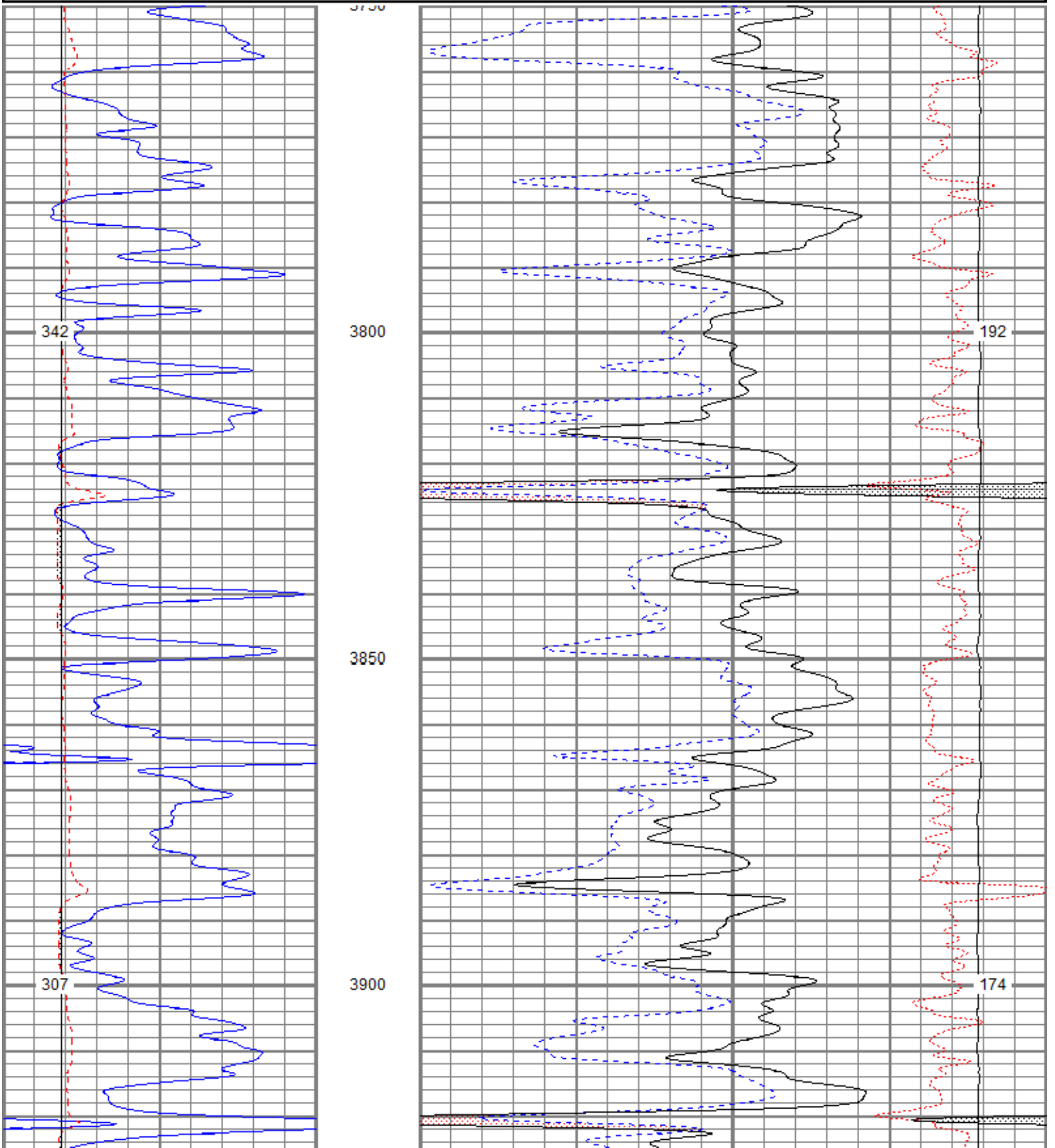
MAIN PASS

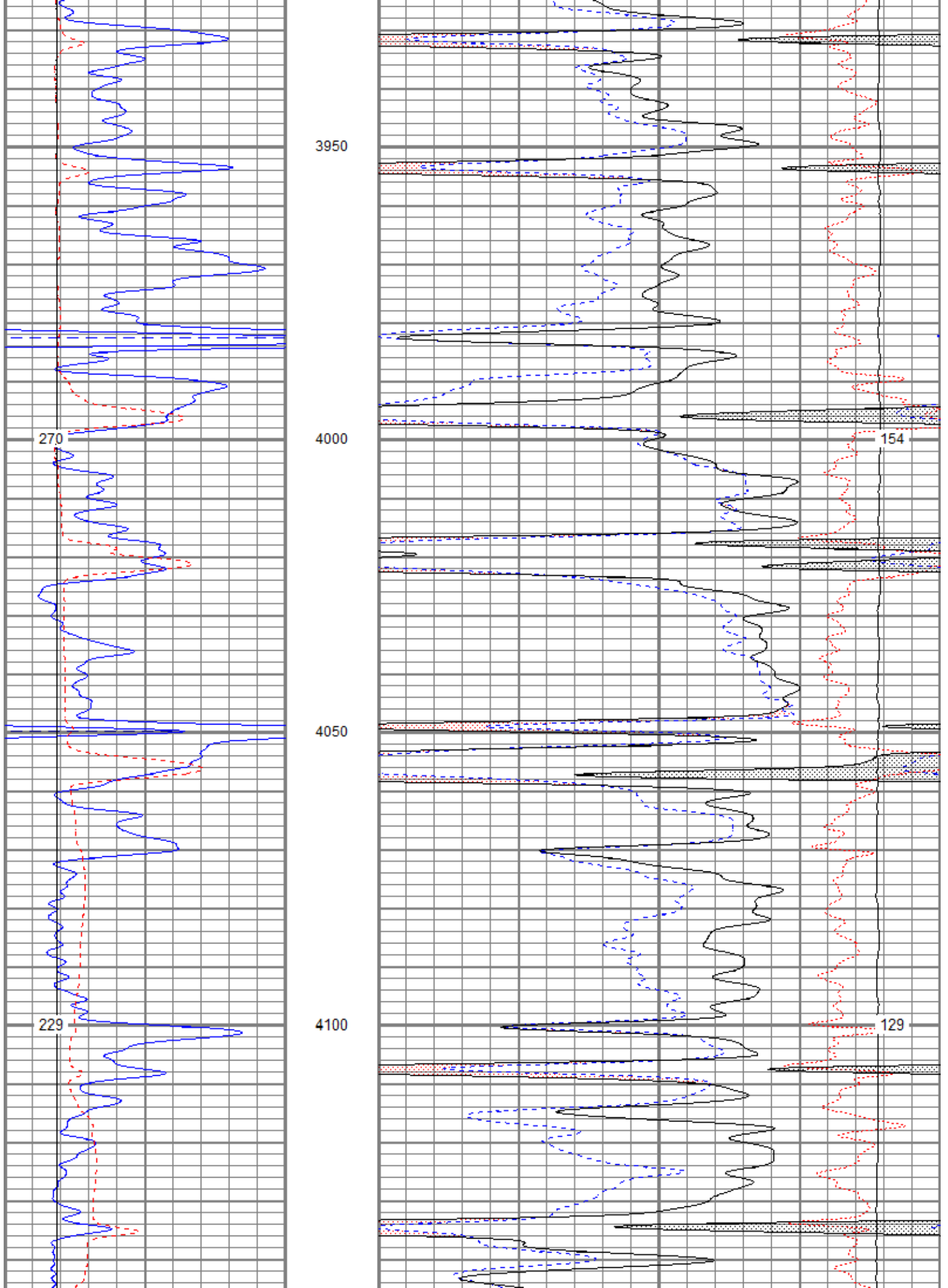
Database File bewheatland8-3oh.db
 Dataset Pathname pass2.1
 Presentation Format kcdnl
 Dataset Creation Sat Sep 02 15:49:29 2017
 Charted by Depth in Feet scaled 1:240

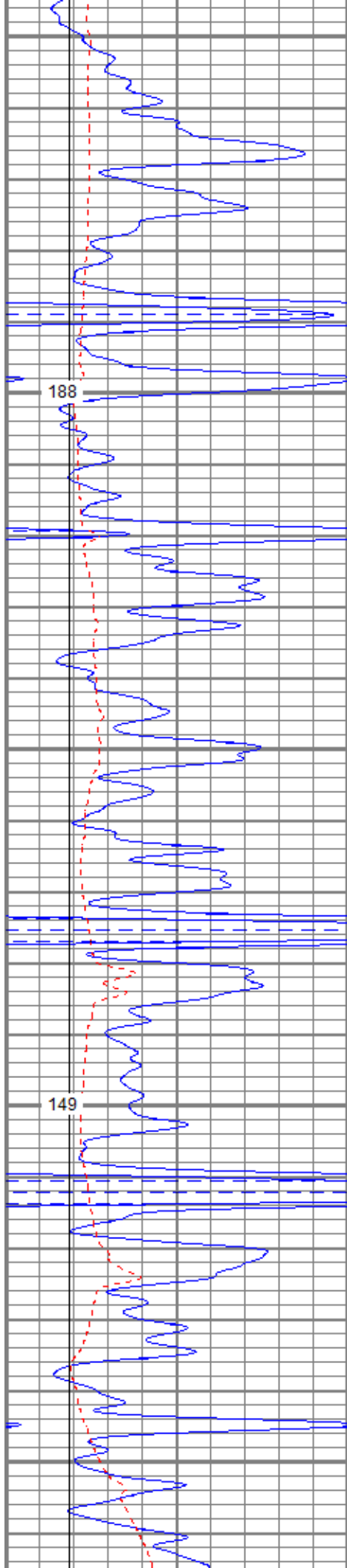
0	GR (GAPI)	150
6	DCAL (in)	16
6	BOREID (in)	16

30	NPOR (pu)	-10
30	DPOR (pu)	-10
70	DPOR (pu)	30

TBHV (ft3)	-0.25	RHOC (g/cc)	0.25
	10000	LTEN (lb)	0
		ABHV (ft3)	







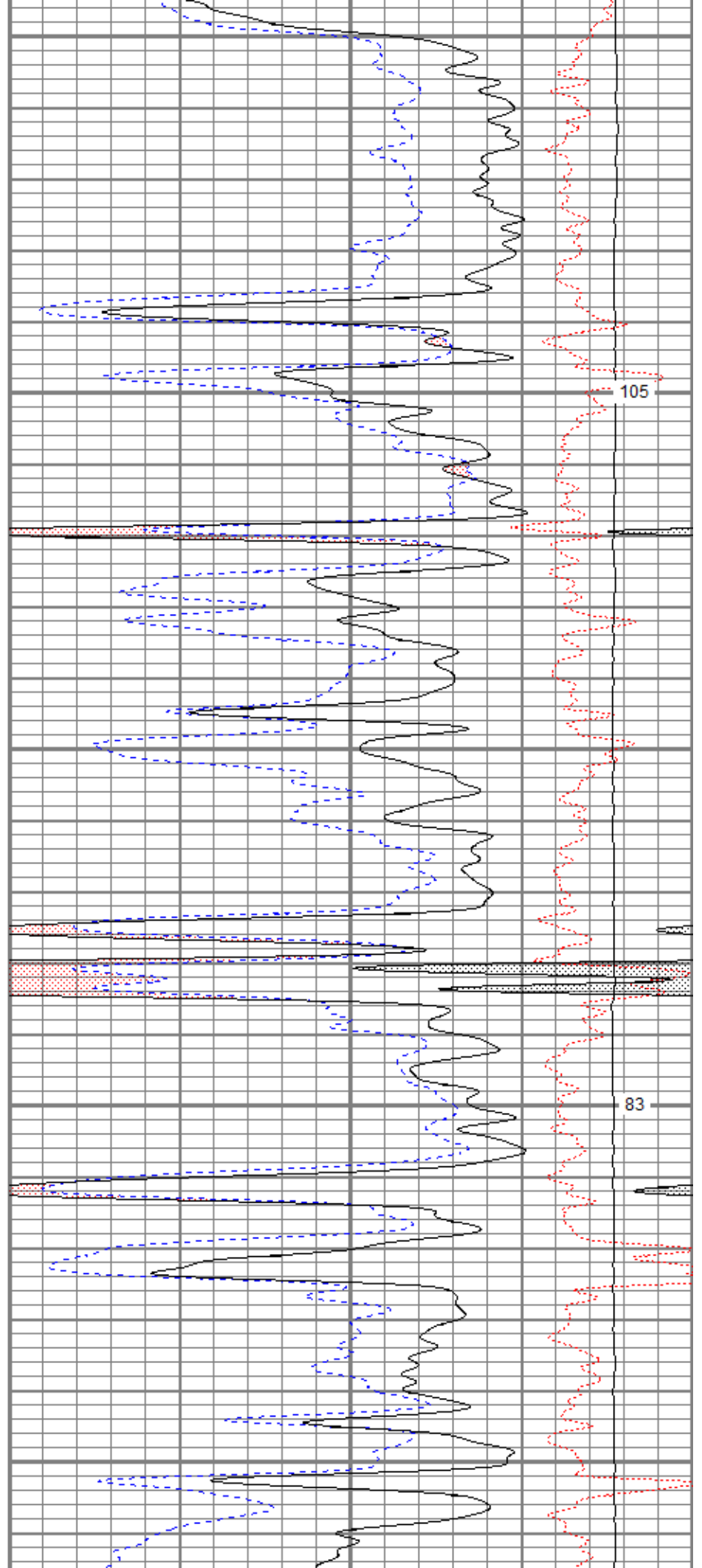
4150

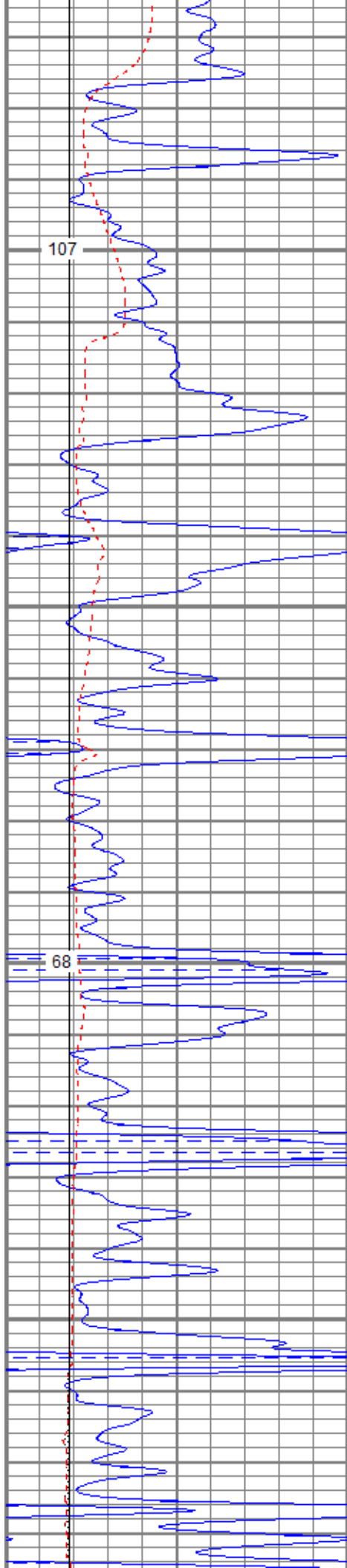
4200

4250

4300

4350



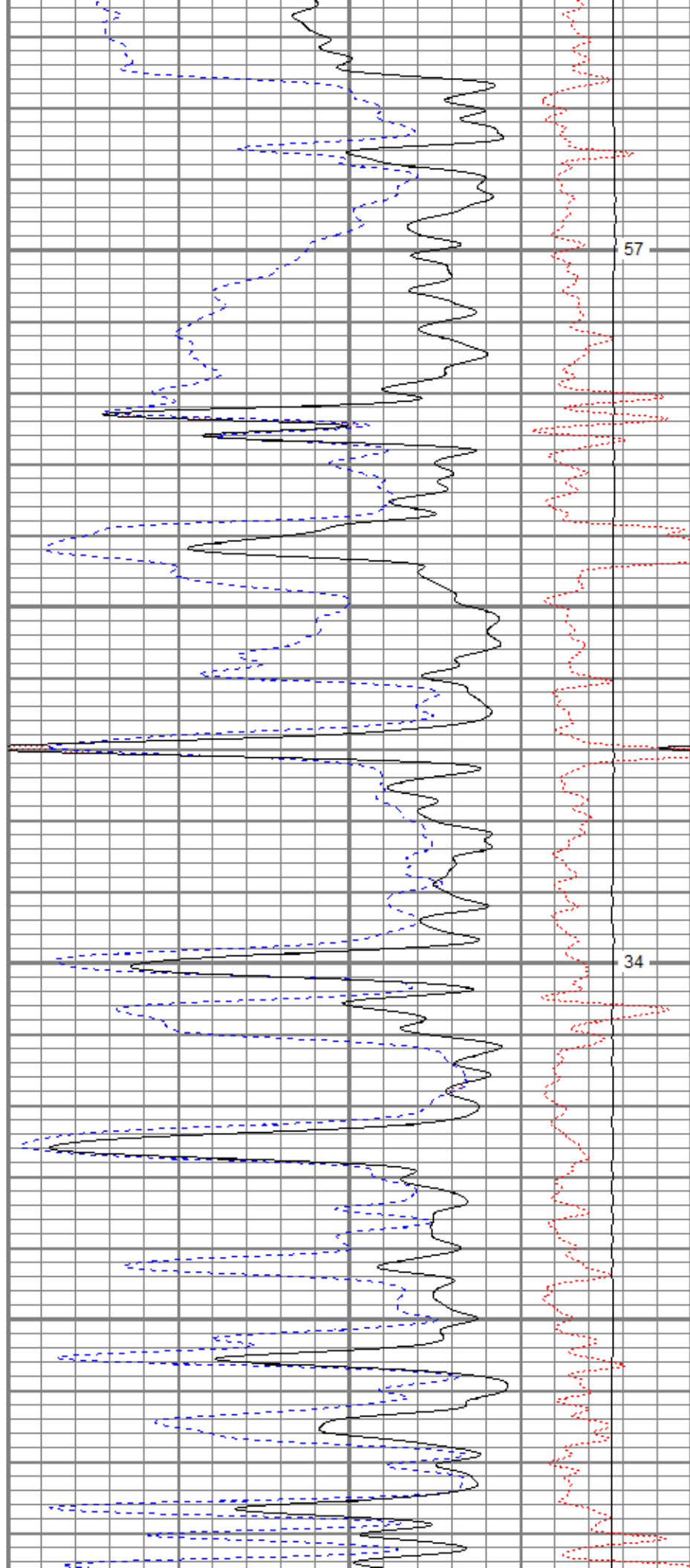


4400

4450

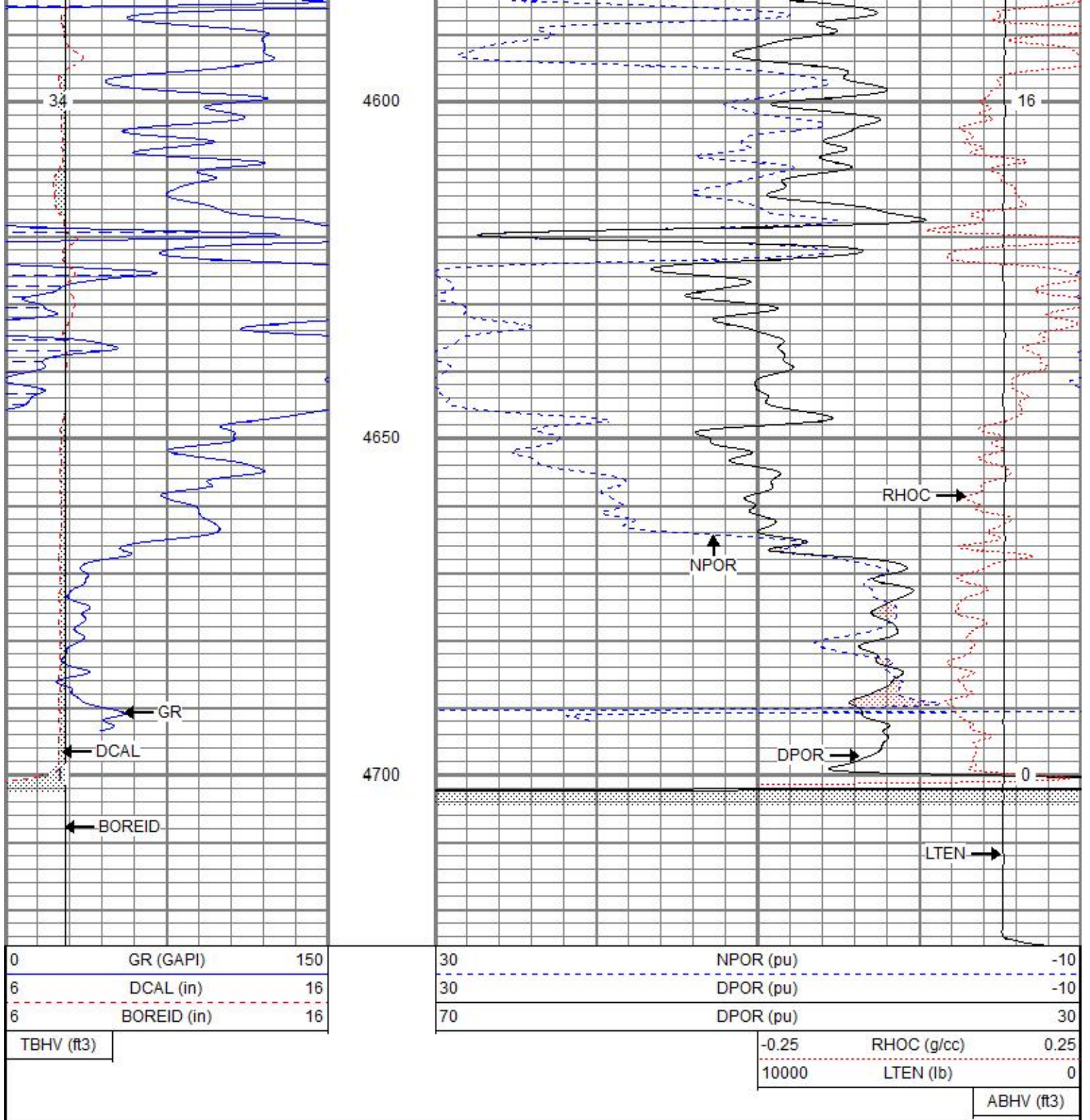
4500

4550



57

34



REPEAT SECTION

Database File bewheatland8-3oh.db
 Dataset Pathname pass1.1
 Presentation Format kcdnl
 Dataset Creation Sat Sep 02 15:51:57 2017
 Charted by Depth in Feet scaled 1:240

0	GR (GAPI)	150	30	NPOR (pu)	-10
6	DCAL (in)	16	30	DPOR (pu)	-10

6 BOREID (in) 16

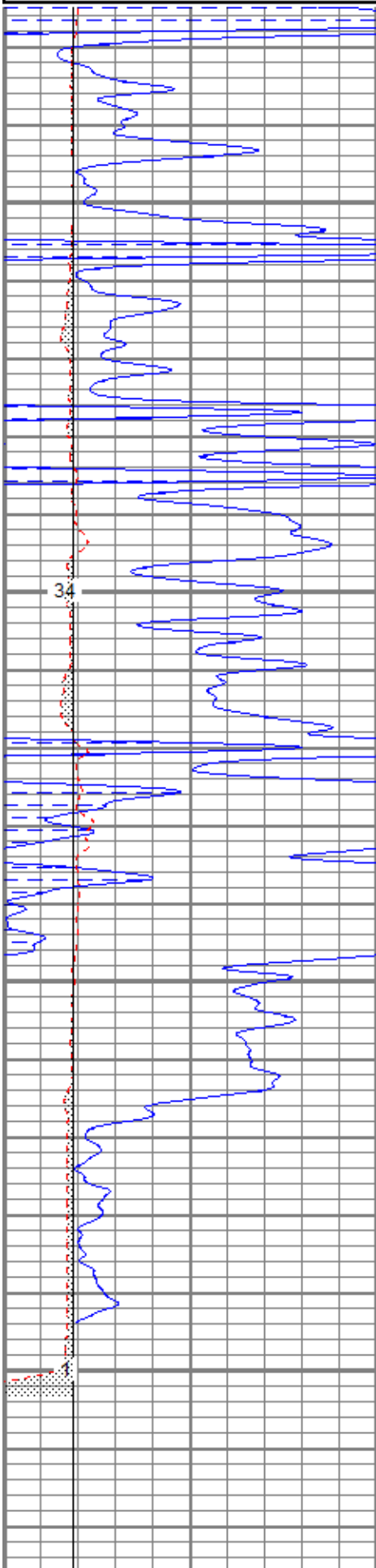
70 DPOR (pu) 30

TBHV (ft3)

-0.25 RHOC (g/cc) 0.25

10000 LTEN (lb) 0

ABHV (ft3)



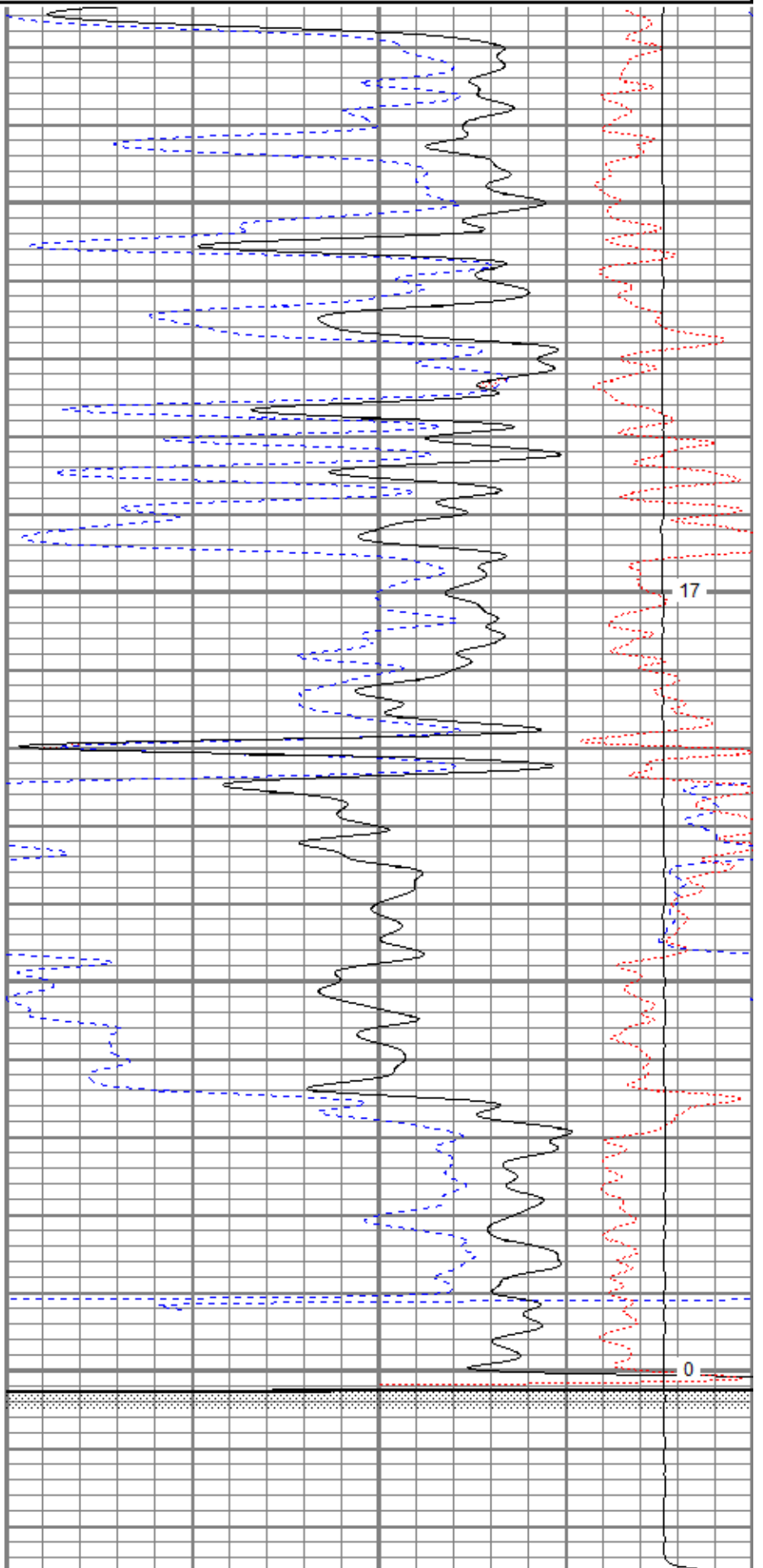
4550

4600

4650

4700

34



17

0

	Size		Reading	
Small Ring	9.35	in	1.49	V
Large Ring	14.00	in	3.25	V

Before Survey Verification				
	Target		Measured	
		g/cc		g/cc
		g/cc		g/cc
		g/cc		g/cc

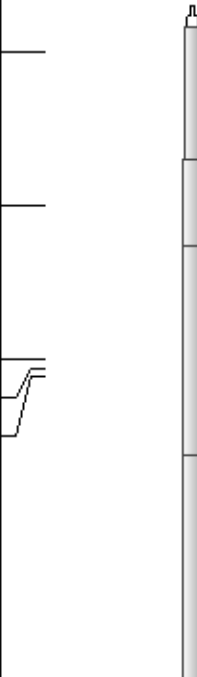
After Survey Verification				
	Target		Measured	
		g/cc		g/cc
		g/cc		g/cc
		g/cc		g/cc

Gamma Ray Calibration Report

Serial Number:	2213TN		
Tool Model:	Aoilex		
Performed:	Mon Feb 20 13:34:10 2017		
Calibrator Value:	1.0	GAPI	
Background Reading:	0.0	cps	
Calibrator Reading:	1.0	cps	
Sensitivity:	1.1000	GAPI/cps	

Neutron Calibration Report

Serial Number:	2301AN		
Tool Model:	Oilex		
Performed:	Tue Jun 28 09:51:54 2016		
Calibrator Value:	1	NAPI	
Calibrator Reading:	1	cps	
Sensitivity:	1	NAPI/cps	

Sensor	Offset (ft)	Schematic	Description	Length (ft)	O.D. (in)	Weight (lb)
NEU	34.62		CHD-None	0.75	1.50	5.00
			NEU-Oilex (2301AN) Oilex 100V NEU	4.27	3.50	80.00
GR	29.60		GR-Aoilex (2213TN) Admyr GR	2.84	4.00	50.00
LSD	24.57		CDL-Aoilex (2113TN) Admyr Oilex	6.80	4.00	250.00
DCAL SSD	24.30 24.05					

SP	10.60		DIL-G (5375) Gearhart	21.47	4.00	345.00
CILD	10.60					
CILM	6.89					
RLL3	1.70					

Dataset: bewheatland8-3oh.db: field/well/run1/pass2.1
 Total length: 36.14 ft
 Total weight: 730.00 lb
 O.D.: 4.00 in