



MICRORESISTIVITY LOG

Company **BEREXCO, LLC**
 Well **ARDENE #1-17**
 Field **WILDCAT**
 County **CHEYENNE**
 State **KANSAS**

Company **BEREXCO, LLC**
 Well **ARDENE #1-17**
 Field **WILDCAT**
 County **CHEYENNE** State **KANSAS**

Location: **API #: 15-023-21448-00-00**
1980' FNL & 660' FEL
SEC 17 TWP 2S RGE 37W
 Permanent Datum **GROUND LEVEL** Elevation **3256**
 Log Measured From **KELLY BUSHING**
 Drilling Measured From **KELLY BUSHING**
 Other Services **RAG**
 Elevation **K.B. 3267**
D.F. N/A
G.L. 3256

Date	11/7/2015
Run Number	TWO
Depth Driller	4800
Depth Logger	4811
Bottom Logged Interval	4810
Top Log Interval	3500
Casing Driller	8,625 @ 307
Casing Logger	308
Bit Size	7.875
Type Fluid in Hole	CHEMICAL
Salinity, ppm CL	800
Density / Viscosity	9.3 71
pH / Fluid Loss	10.0 6.8
Source of Sample	Flowline
Rm @ Meas. Temp	0.90 @ 38
Rmt @ Meas. Temp	0.68 @ 38
Rmc @ Meas. Temp	1.22 @ 38
Source of Rmf / Rmc	Charts
Rm @ BHT	0.28 @ 124
Operating Rig Time	3 HOURS
Max Rec. Temp. F	124
Equipment Number	91
Location	Hays
Recorded By	D. SCHMIDT
Witnessed By	BRYAN BYNOG

<<< Fold Here >>>

All interpretations are opinions based on inferences from electrical or other measurements and Pioneer Wireline Services, LLC cannot and does not guarantee the accuracy or correctness of any interpretation, and Pioneer Wireline Services, LLC will not be liable or responsible for any loss, costs, damages, or expenses incurred or sustained by anyone resulting from any interpretation made by any of our officers, agents or employees.

Comments

N/A DENOTES NOT AVAILABLE OR NON-APPLICABLE.

**BIRD CITY,
 NORTH TO AA RD,
 4 EAST TO 32 RD, 5 SOUTH TO W RD,
 5 WEST TO LOCATION (ROAD DEAD ENDS)**

Log Measured From: KELLY BUSHING 11 Ft. Above Permanent Datum

THANK YOU FOR USING PIONEER ENERGY SERVICES
www.pioneerenergy.com 785-625-3858

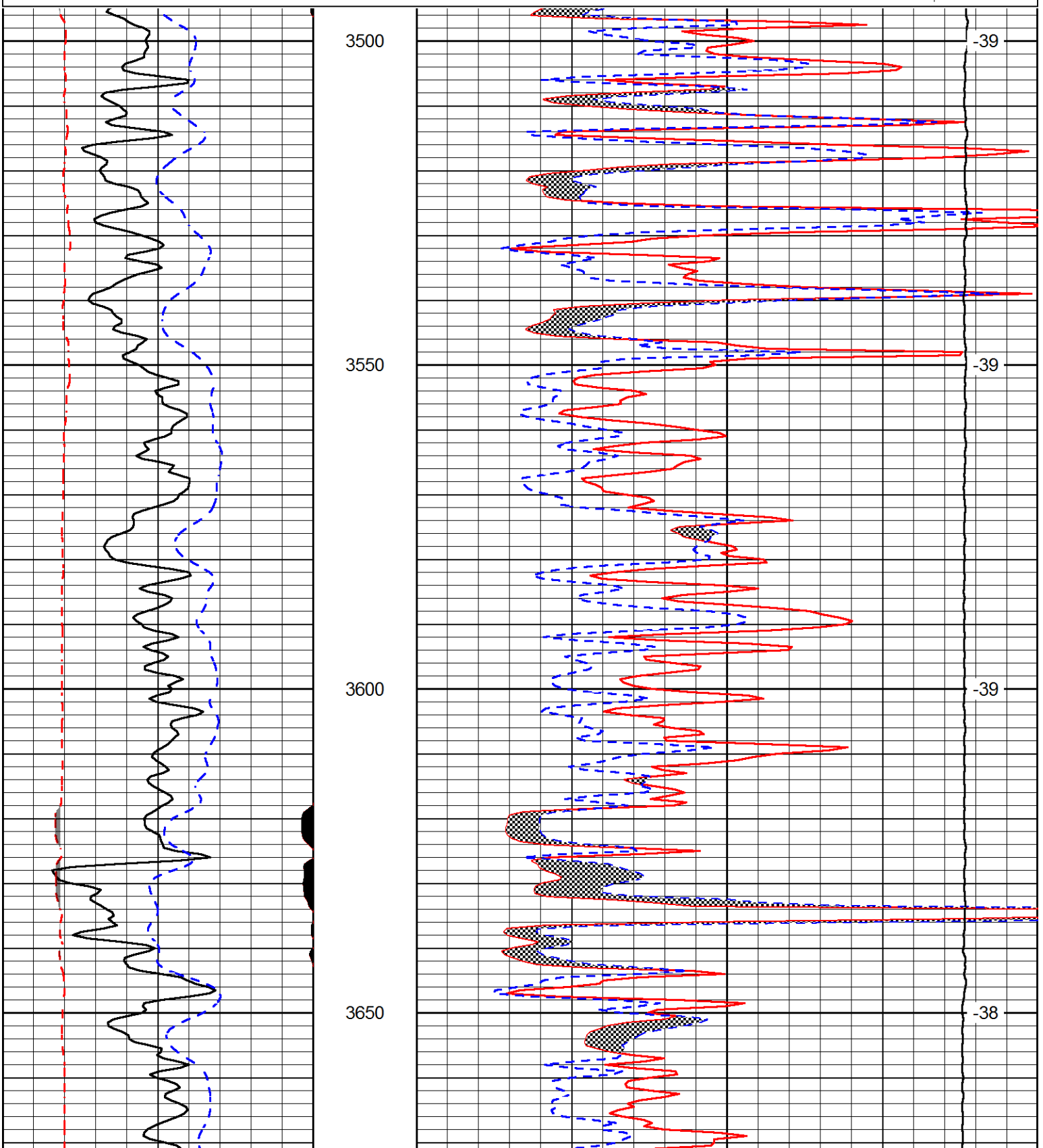
Your Pioneer Energy Services Crew	This Log Record Was Witnessed By
Engineer: D. SCHMIDT	Primary Witness: BRYAN BYNOG
Operator:	Secondary Witness:
Operator:	Secondary Witness:
Operator:	Secondary Witness:

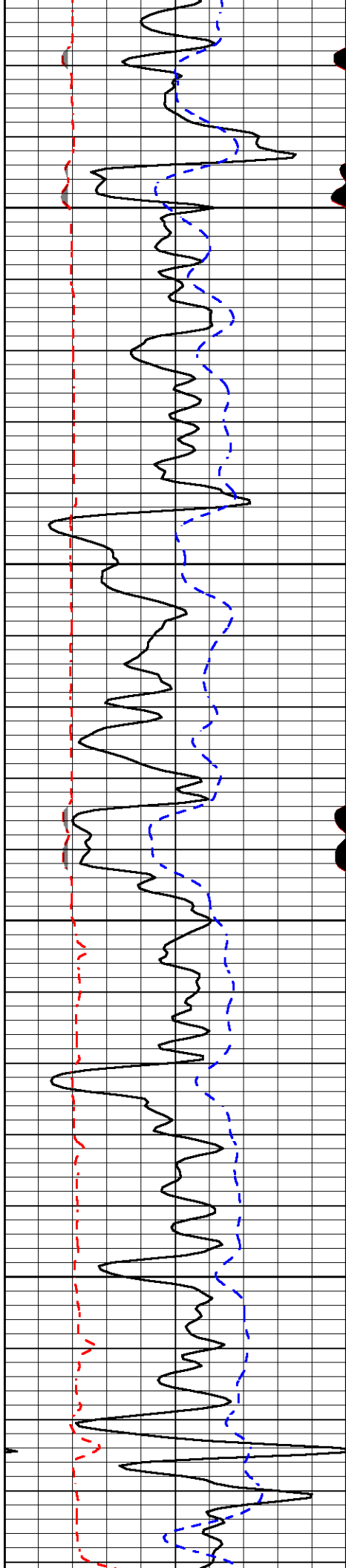
Database File berexco_ardene_1-17hd.db
 Dataset Pathname RAG/bragmel
 Presentation Format micro
 Dataset Creation Sat Nov 07 14:48:03 2015
 Charted by Depth in Feet scaled 1:240

0	Gamma Ray (GAPI)	150
6	MCAL (in)	16
2.875	Mud Cake (in)	7.875
-200	SP (mV)	0

0	Micro Inverse 1 X 1 (Ohm-m)	40
0	Micro Normal 2" (Ohm-m)	40
10000	Line Weight (lb)	0

LSPD
(ft/min)



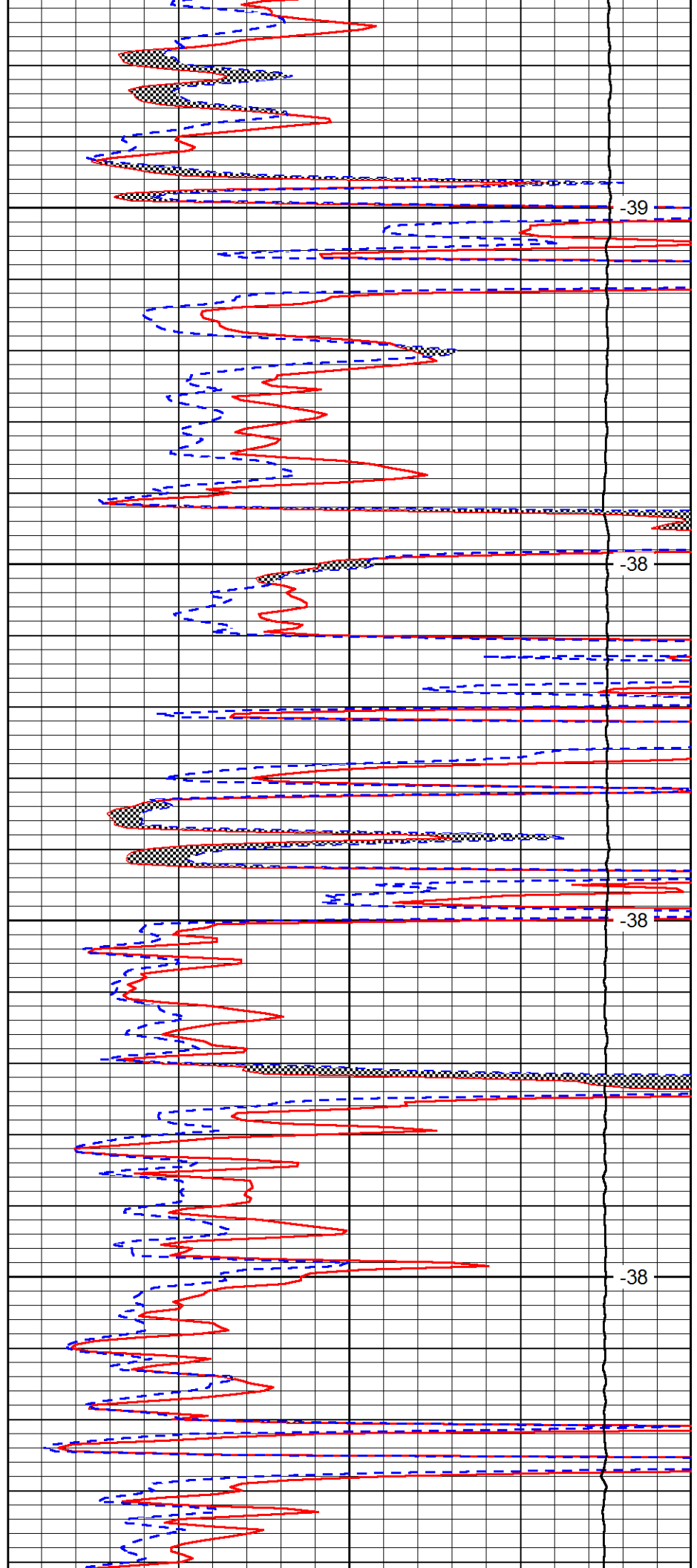


3700

3750

3800

3850

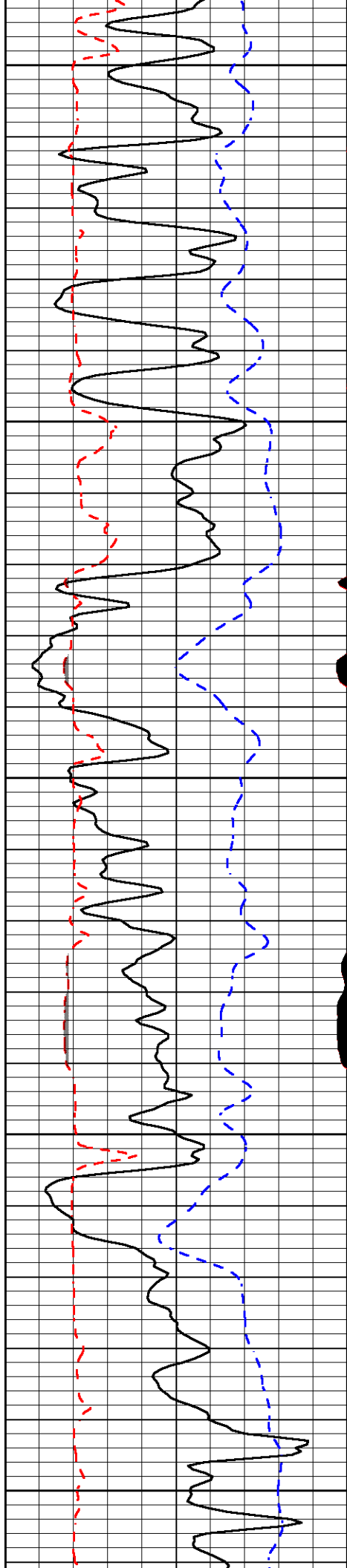


-39

-38

-38

-38



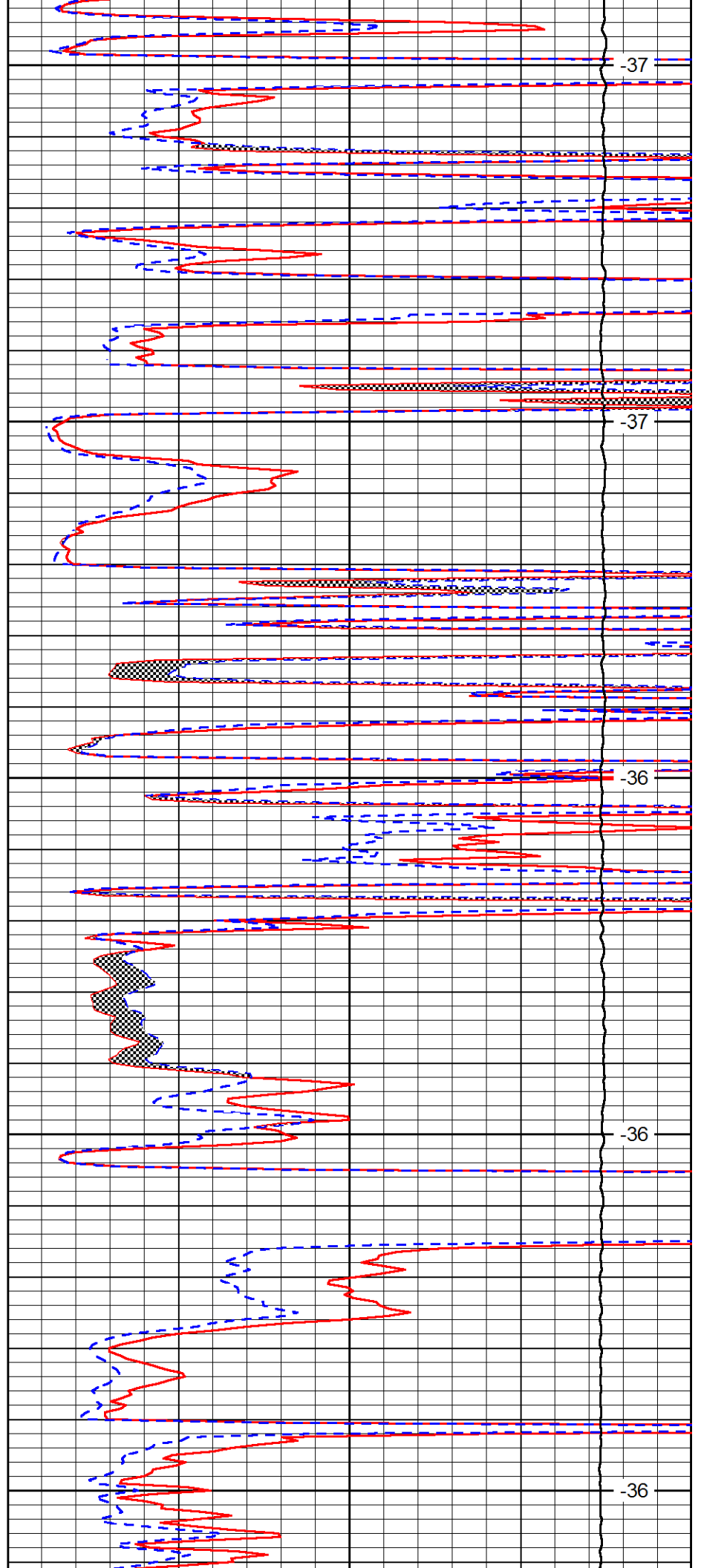
3900

3950

4000

4050

4100



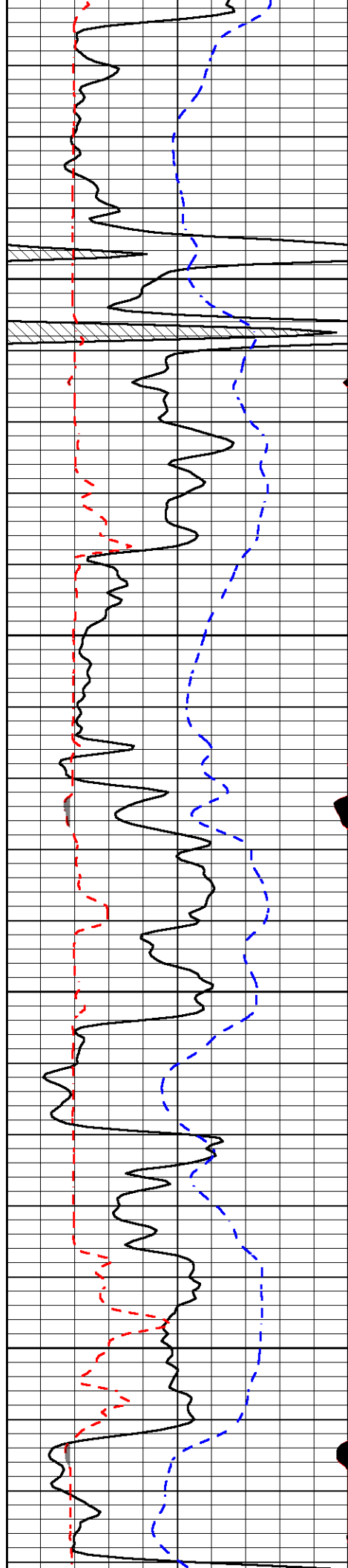
-37

-37

-36

-36

-36

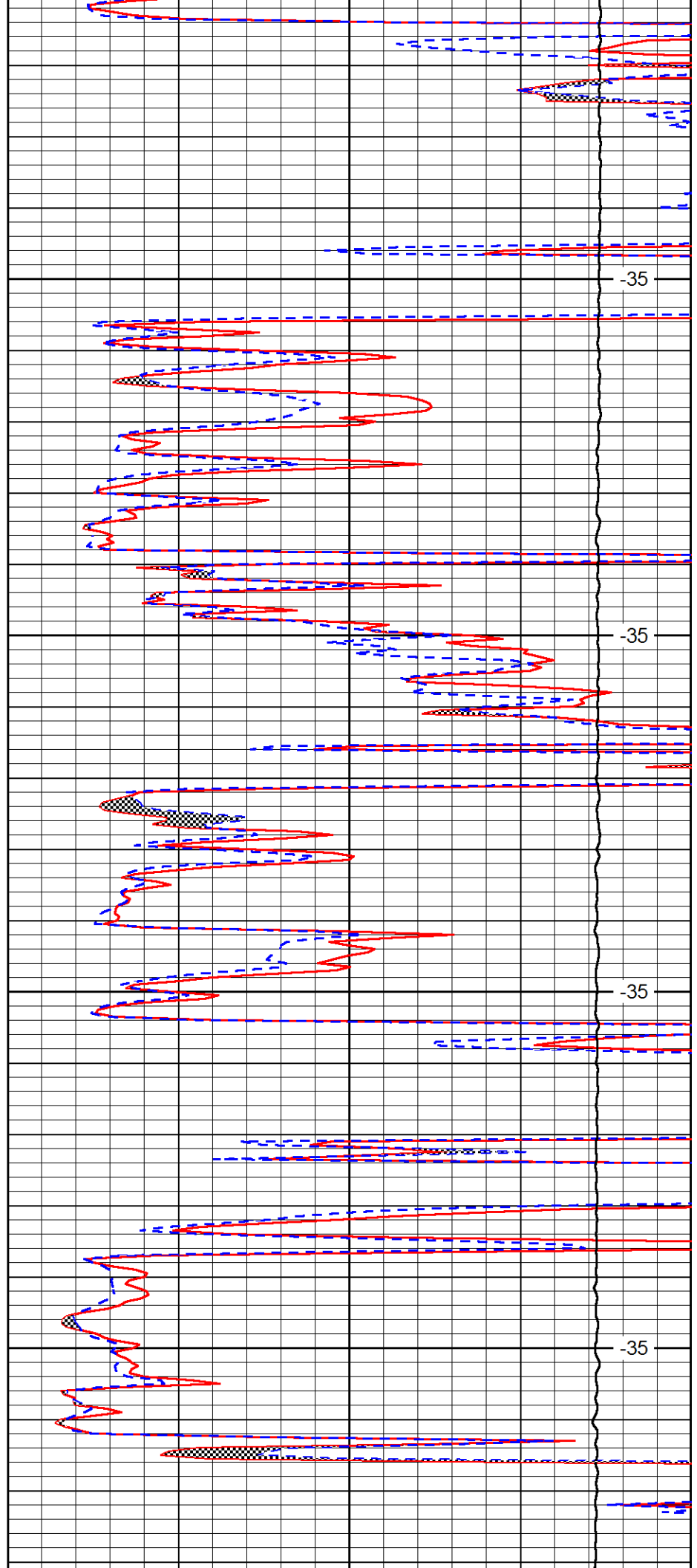


4150

4200

4250

4300

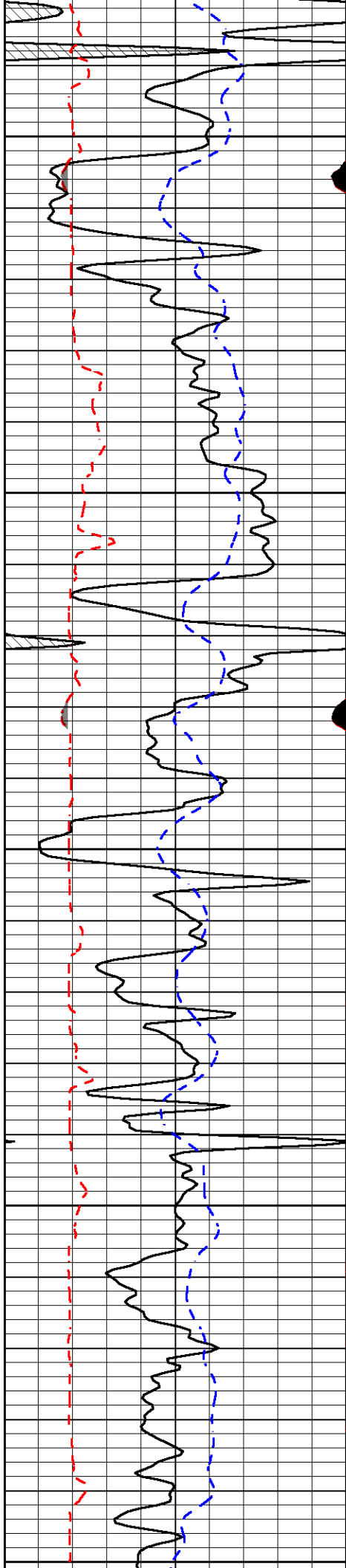


-35

-35

-35

-35



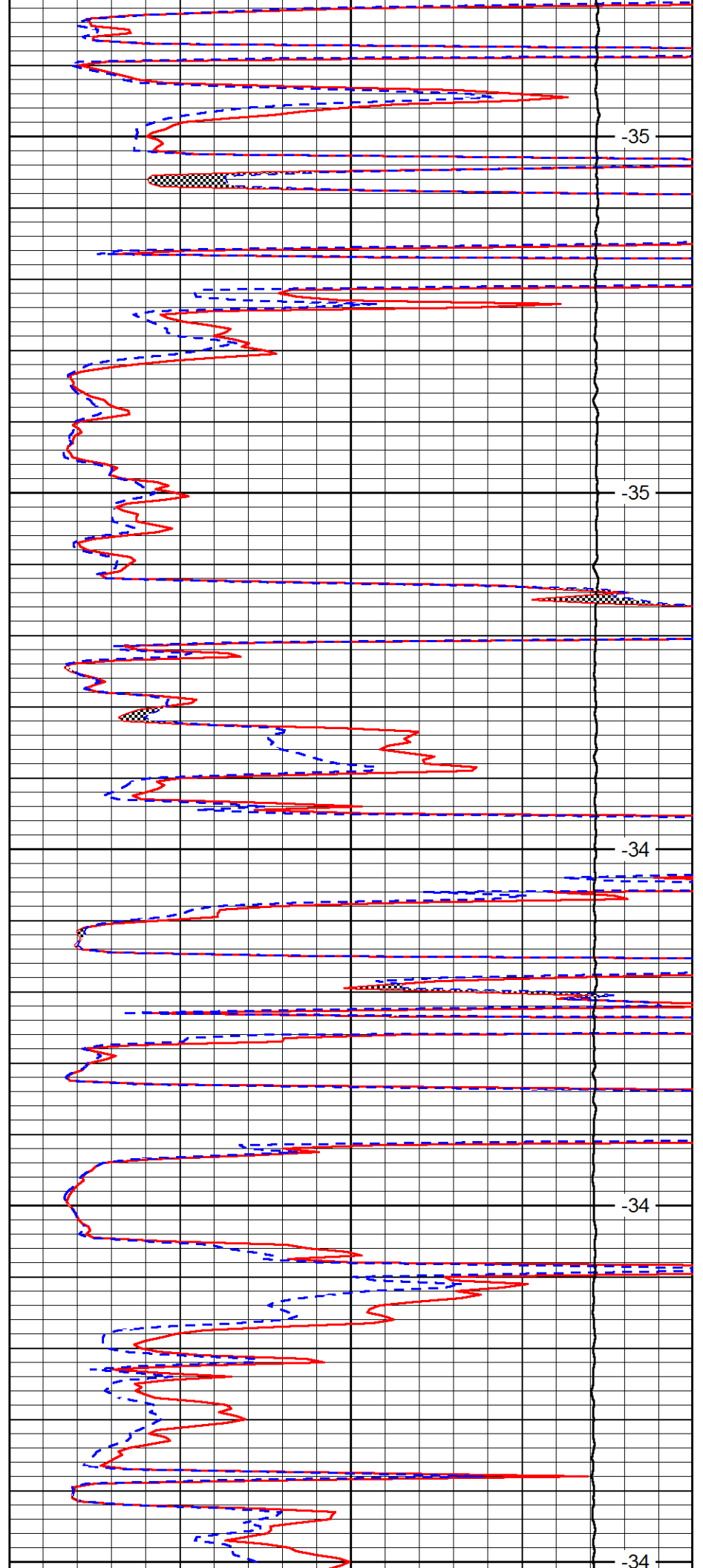
4350

4400

4450

4500

4550



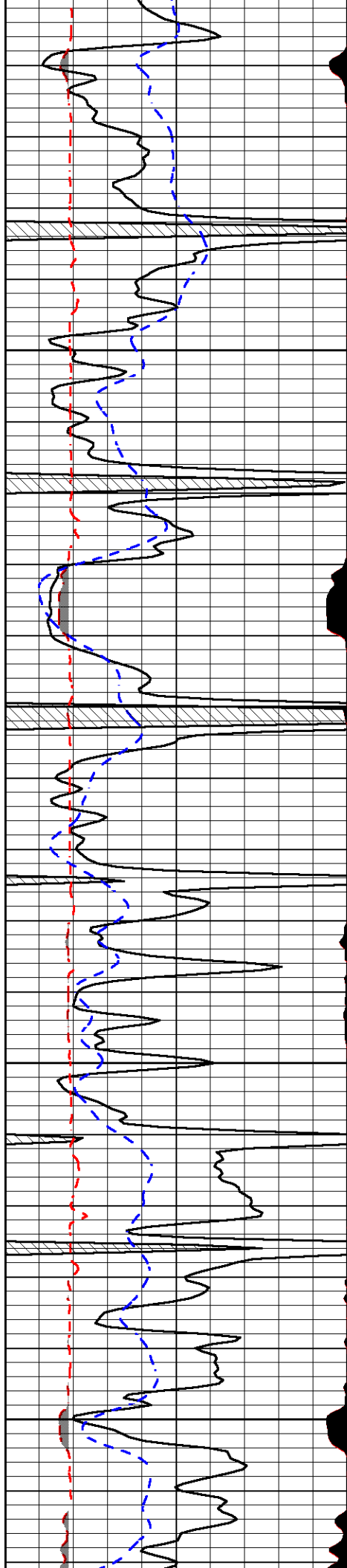
-35

-35

-34

-34

-34

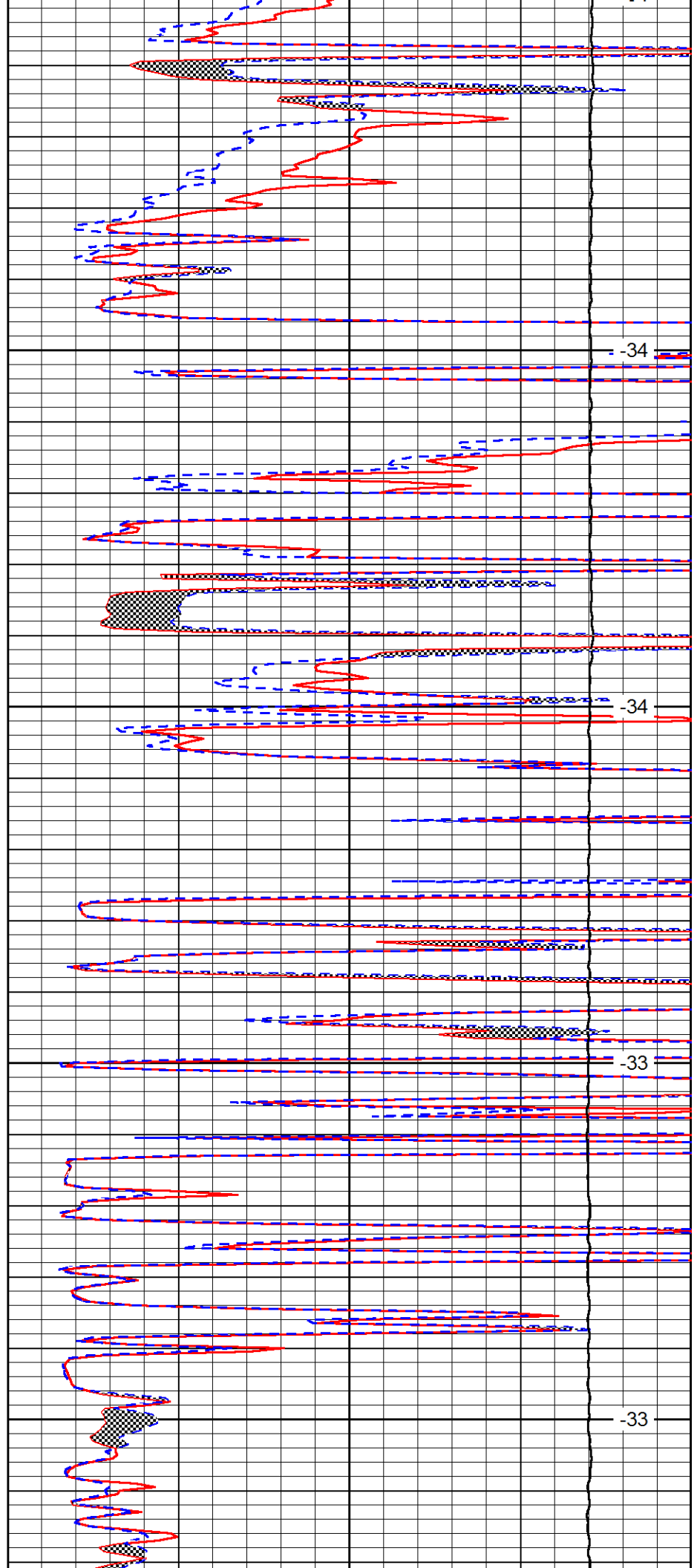


4600

4650

4700

4750

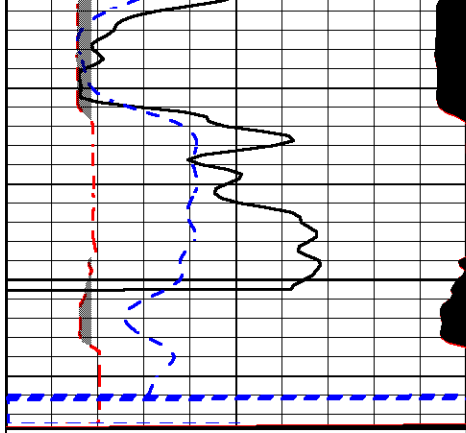


-34

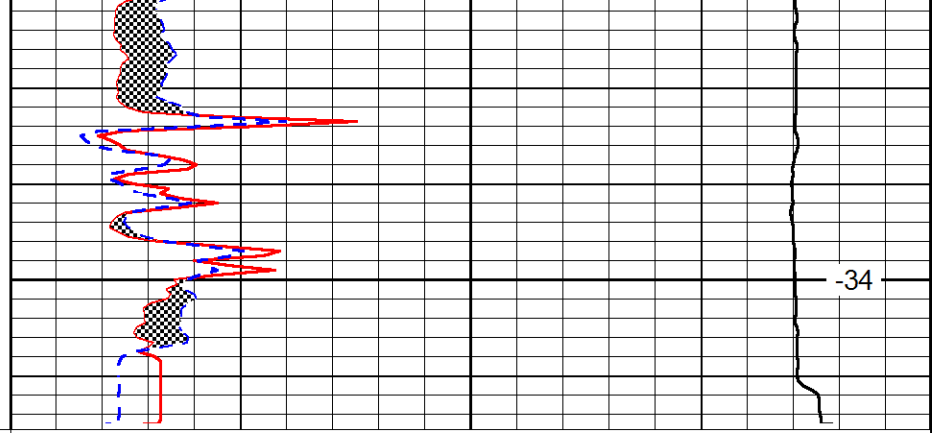
-34

-33

-33



4800



-34

0	Gamma Ray (GAPI)	150
6	MCAL (in)	16
2.875	Mud Cake (in)	7.875
-200	SP (mV)	0

0	Micro Inverse 1 X 1 (Ohm-m)	40
0	Micro Normal 2" (Ohm-m)	40
10000	Line Weight (lb)	0

LSPD
(ft/min)