



**RADIATION GUARD  
LOG**

Company **BEREXCO, LLC**  
 Well **ARDENE #1-17**  
 Field **WILDCAT**  
 County **CHEYENNE**  
 State **KANSAS**

Company **BEREXCO, LLC**  
 Well **ARDENE #1-17**  
 Field **WILDCAT**  
 County **CHEYENNE** State **KANSAS**

Location: **API #: 15-023-21448-00-00**  
**1980' FNL & 660' FEL**  
**SEC 17 TWP 2S RGE 37W**

Other Services  
**MEL**  
 Permanent Datum **GROUND LEVEL** Elevation **3256**  
 Log Measured From **KELLY BUSHING**  
 Drilling Measured From **KELLY BUSHING**  
 Elevation **3267**  
 K.B. **N/A**  
 D.F. **N/A**  
 G.L. **3256**

Date	11/7/2015
Run Number	ONE
Depth Driller	4800
Depth Logger	4811
Bottom Logged Interval	4810
Top Log Interval	300
Casing Driller	8,625 @ 307
Casing Logger	308
Bit Size	7.875
Type Fluid in Hole	CHEMICAL
Salinity, ppm CL	800
Density / Viscosity	9.3 71
pH / Fluid Loss	10.0 6.8
Source of Sample	Flowline
Rm @ Meas. Temp	0.90 @ 38
Rmt @ Meas. Temp	0.68 @ 38
Rmc @ Meas. Temp	1.22 @ 38
Source of Rmf / Rmc	Charts
Rm @ BHT	0.28 @ 124
Operating Rig Time	3 HOURS
Max Rec. Temp. F	124
Equipment Number	91
Location	Hays
Recorded By	D. SCHMIDT
Witnessed By	BRYAN BYNOG

<<< Fold Here >>>

All interpretations are opinions based on inferences from electrical or other measurements and Pioneer Wireline Services, LLC cannot and does not guarantee the accuracy or correctness of any interpretation, and Pioneer Wireline Services, LLC will not be liable or responsible for any loss, costs, damages, or expenses incurred or sustained by anyone resulting from any interpretation made by any of our officers, agents or employees.

**Comments**

**N/A DENOTES NOT AVAILABLE OR NON-APPLICABLE.**

**BIRD CITY,  
 NORTH TO AA RD,  
 4 EAST TO 32 RD, 5 SOUTH TO W RD,  
 5 WEST TO LOCATION ( ROAD DEAD ENDS)**

**Log Measured From: KELLY BUSHING      11 Ft. Above Permanent Datum**

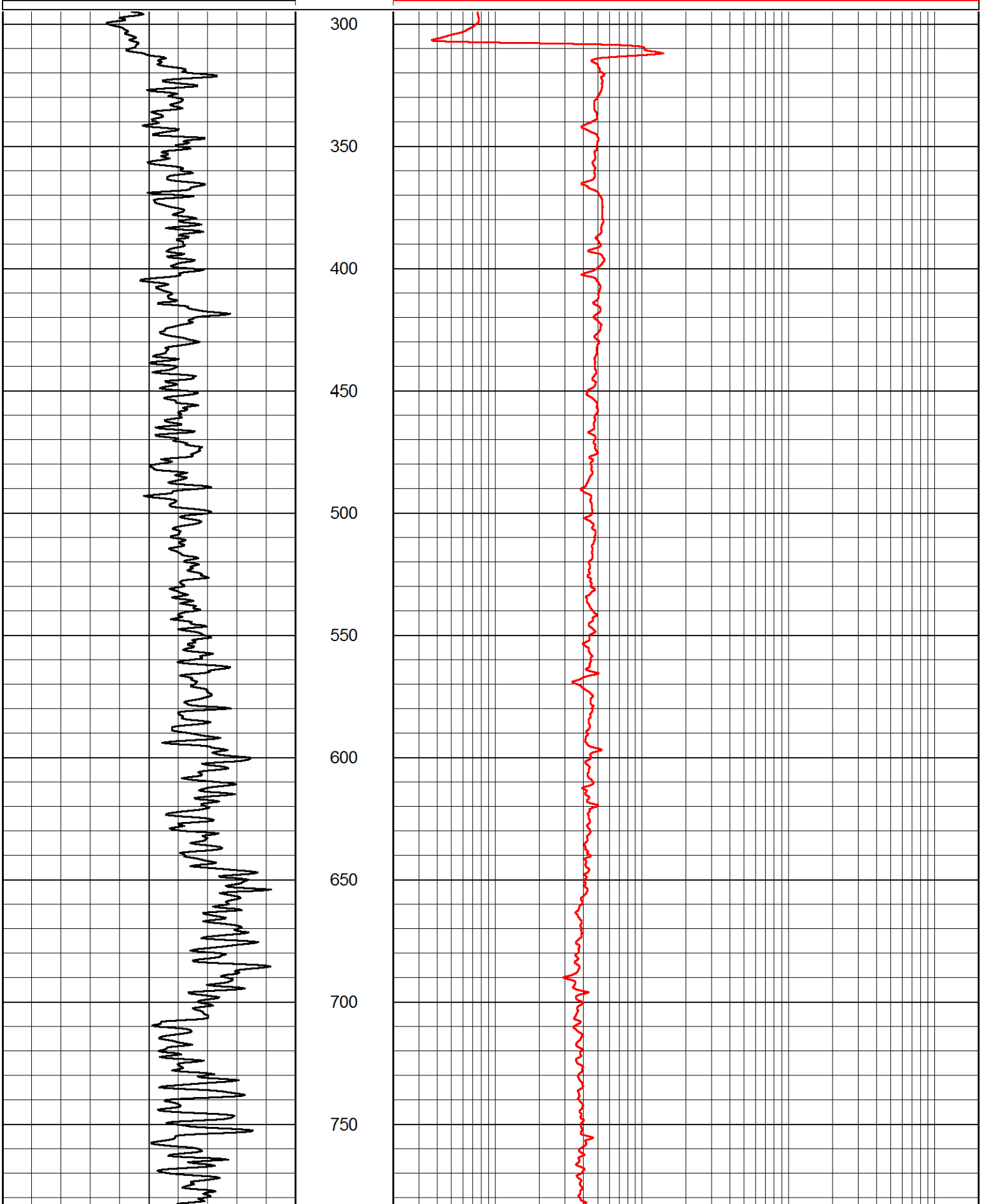
**THANK YOU FOR USING PIONEER ENERGY SERVICES**  
**www.pioneerenergy.com      785-625-3858**

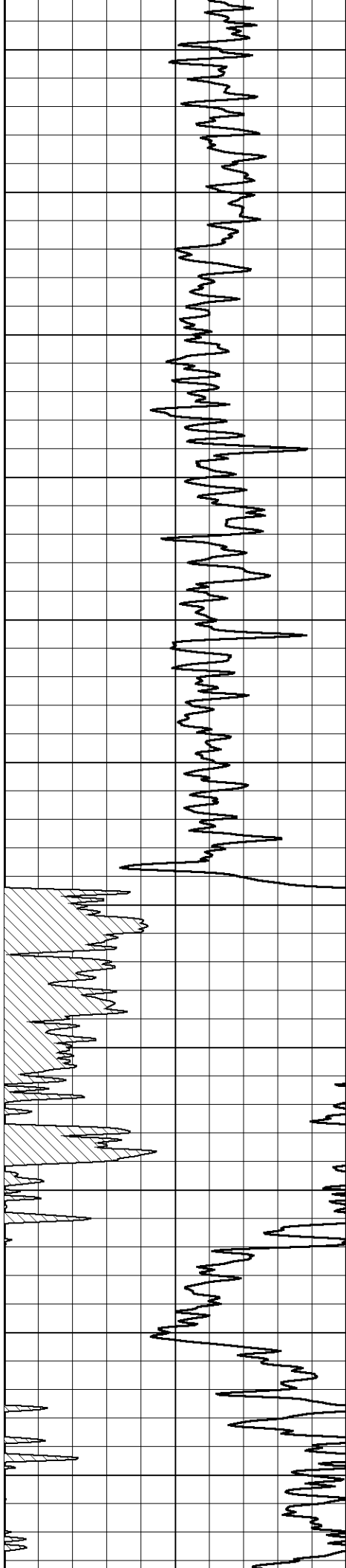
<b>Your Pioneer Energy Services Crew</b>	<b>This Log Record Was Witnessed By</b>
Engineer: <b>D. SCHMIDT</b>	Primary Witness: <b>BRYAN BYNOG</b>
Operator:	Secondary Witness:
Operator:	Secondary Witness:
Operator:	Secondary Witness:

Database File berexco\_ardene\_1-17hd.db  
Dataset Pathname RAG/bragmel  
Presentation Format rag2in  
Dataset Creation Sat Nov 07 14:48:03 2015  
Charted by Depth in Feet scaled 1:600

0 Gamma Ray (GAPI) 150

0.2 Igrd (Ohm-m) 2000





800

850

900

950

1000

1050

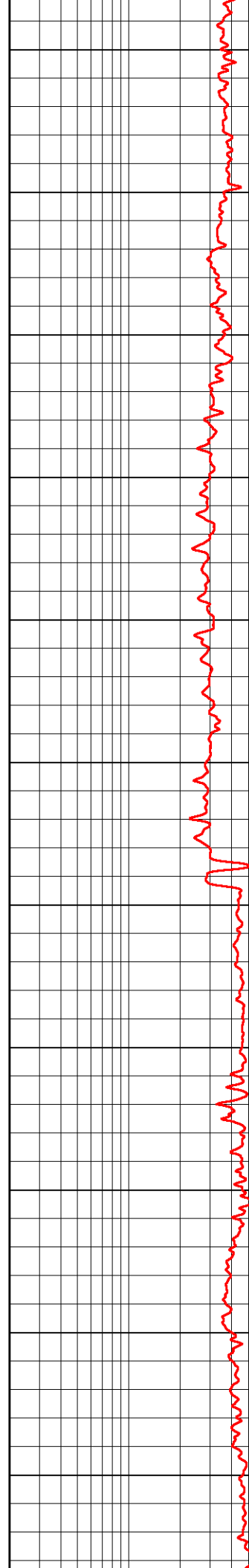
1100

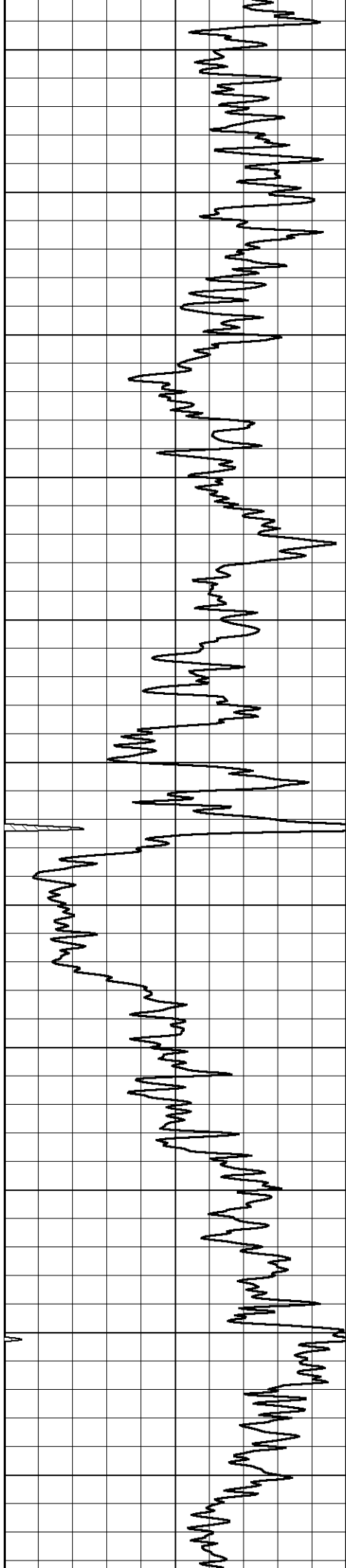
1150

1200

1250

1300





1350

1400

1450

1500

1550

1600

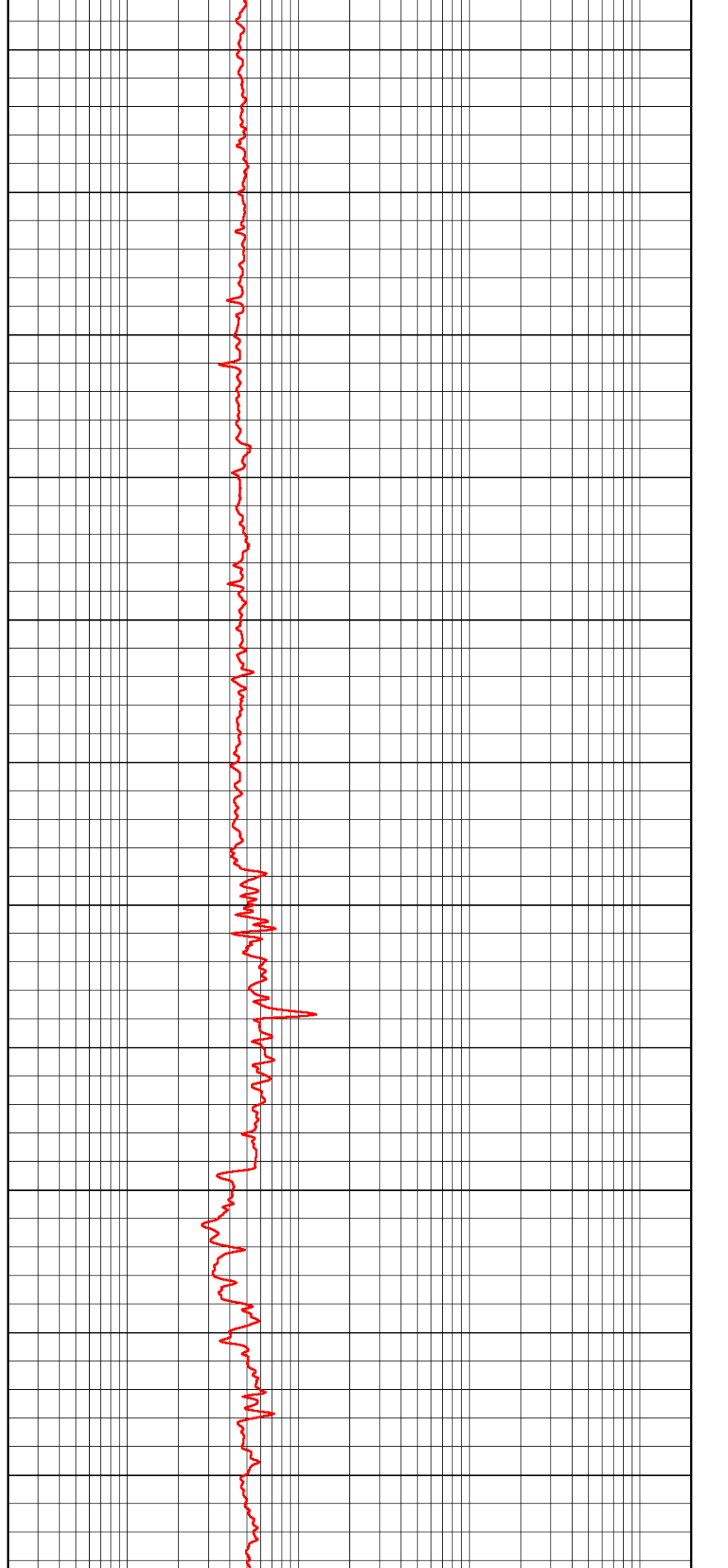
1650

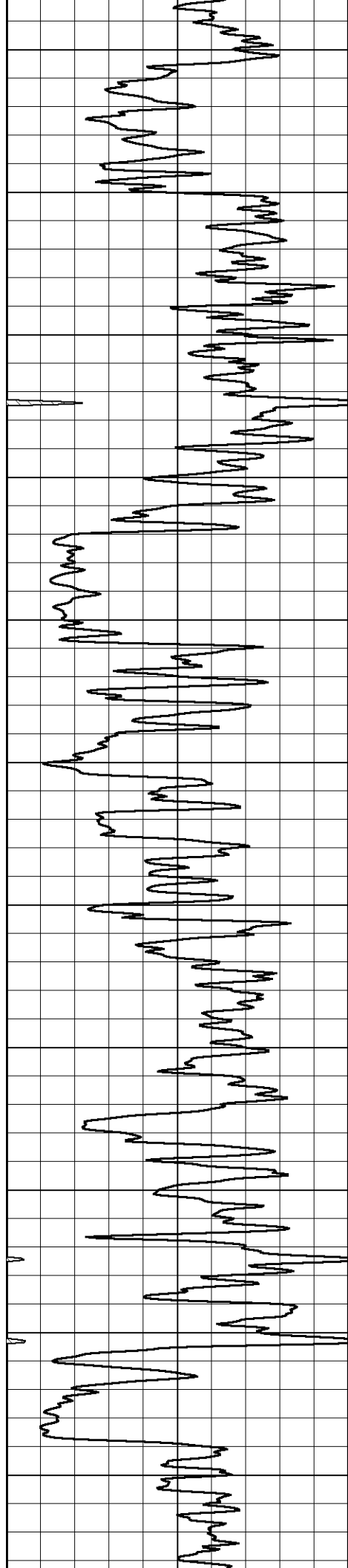
1700

1750

1800

1850





1900

1950

2000

2050

2100

2150

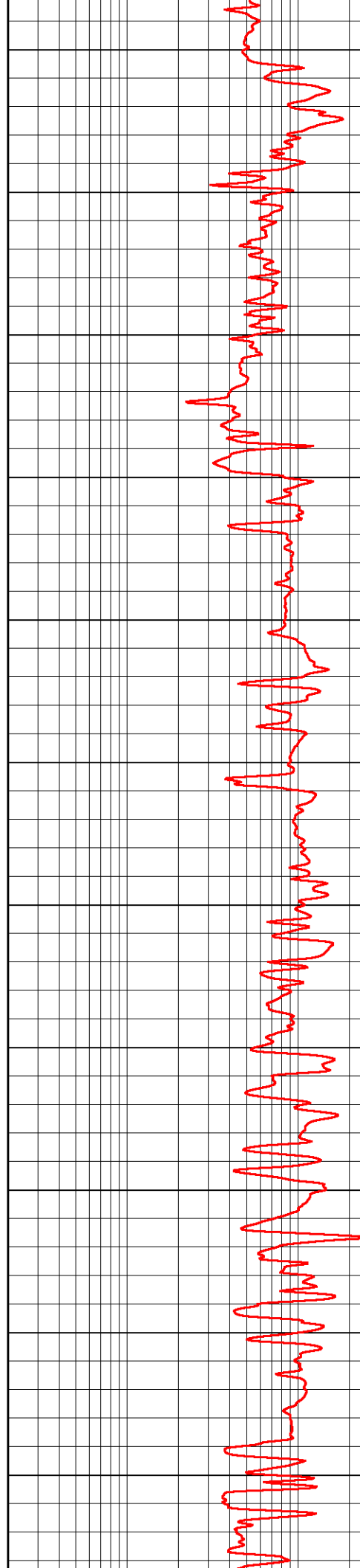
2200

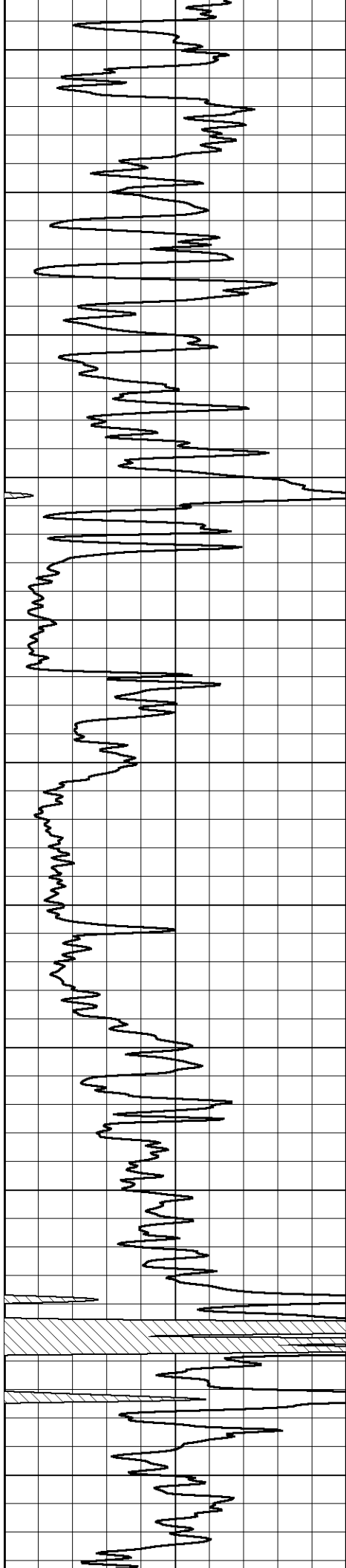
2250

2300

2350

2400





2450

2500

2550

2600

2650

2700

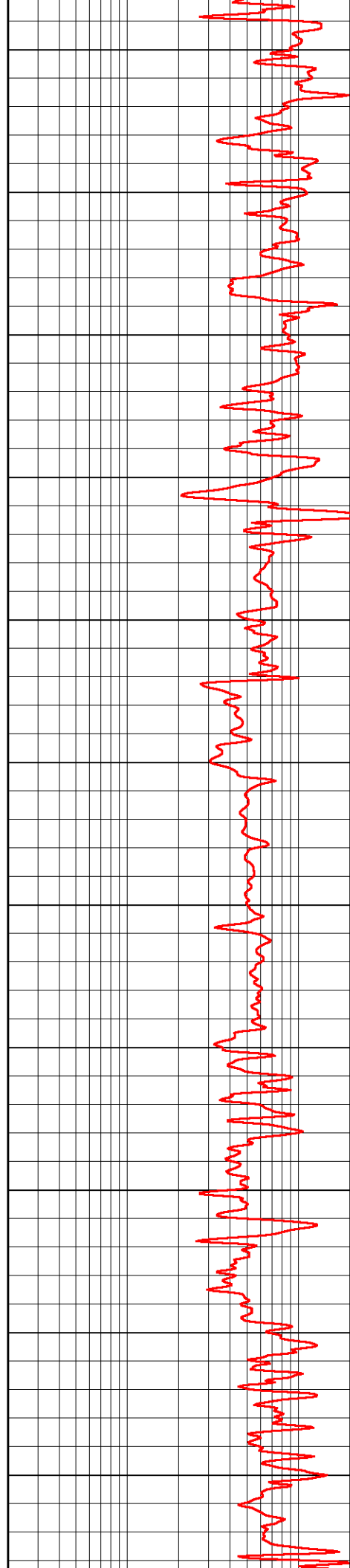
2750

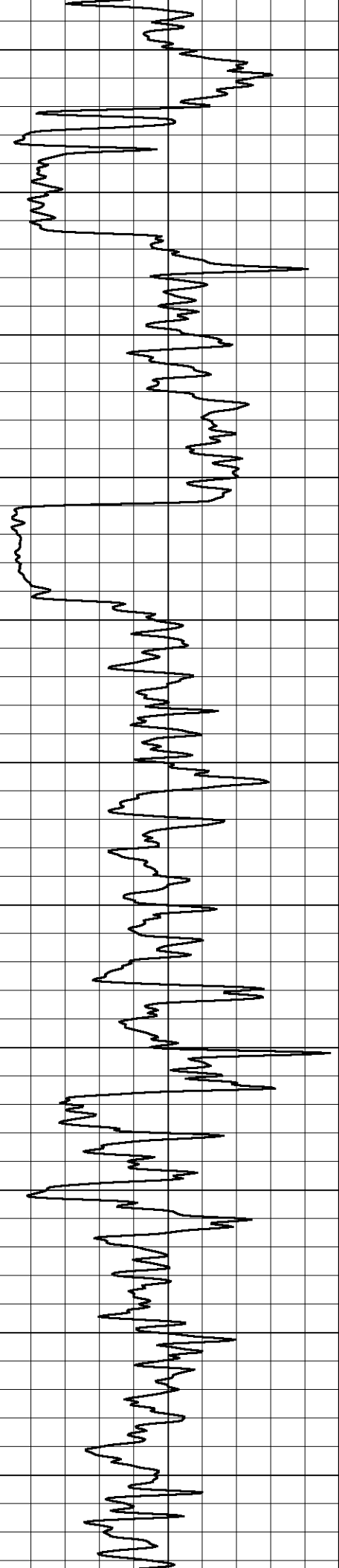
2800

2850

2900

2950





3000

3050

3100

3150

3200

3250

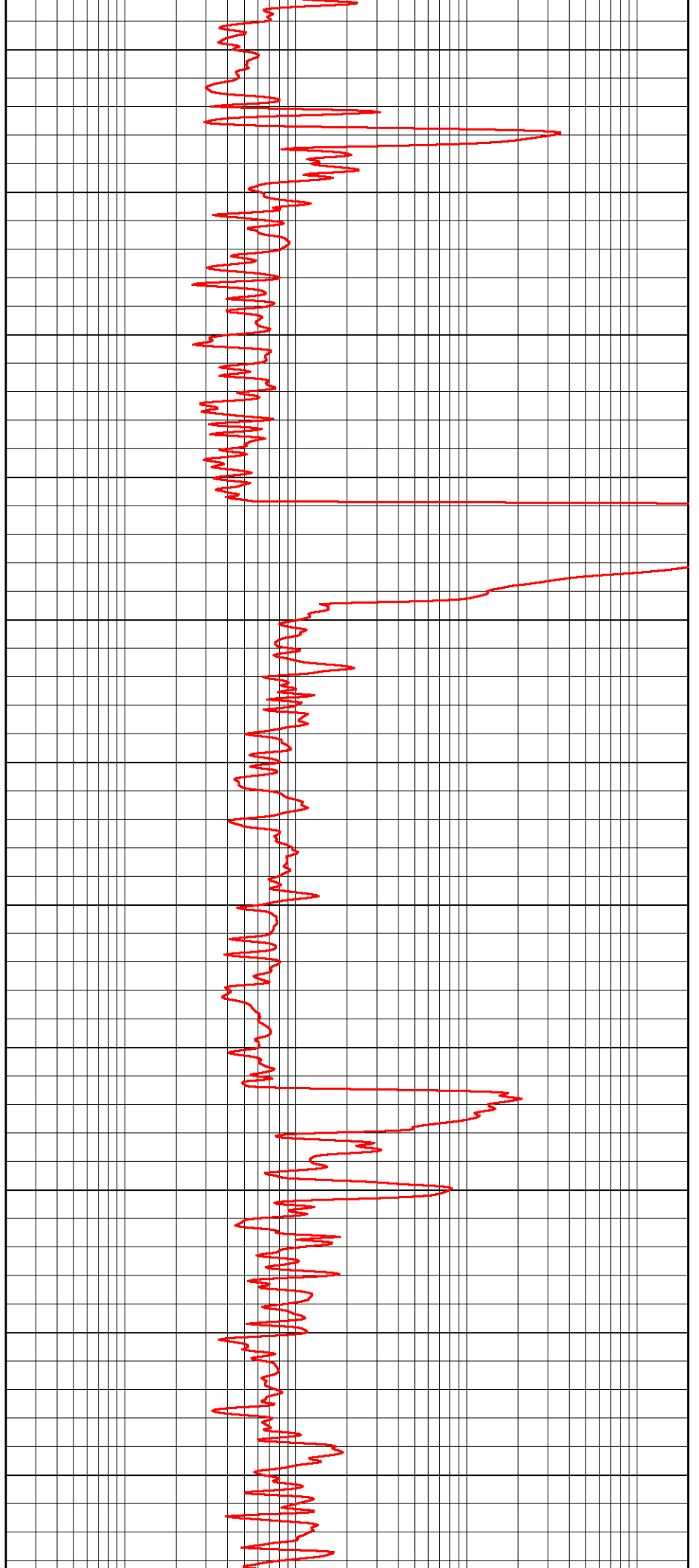
3300

3350

3400

3450

3500



3000

3050

3100

3150

3200

3250

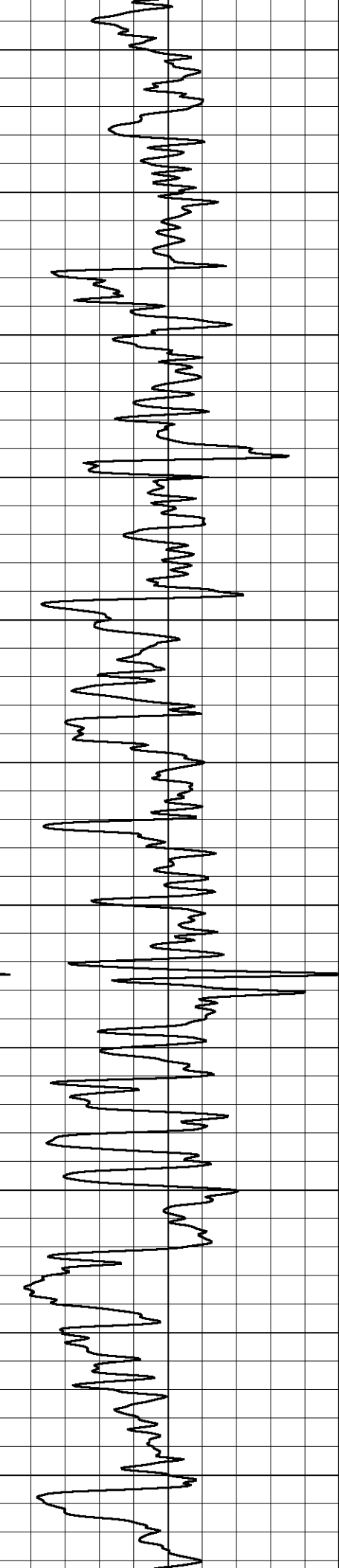
3300

3350

3400

3450

3500



3550

3600

3650

3700

3750

3800

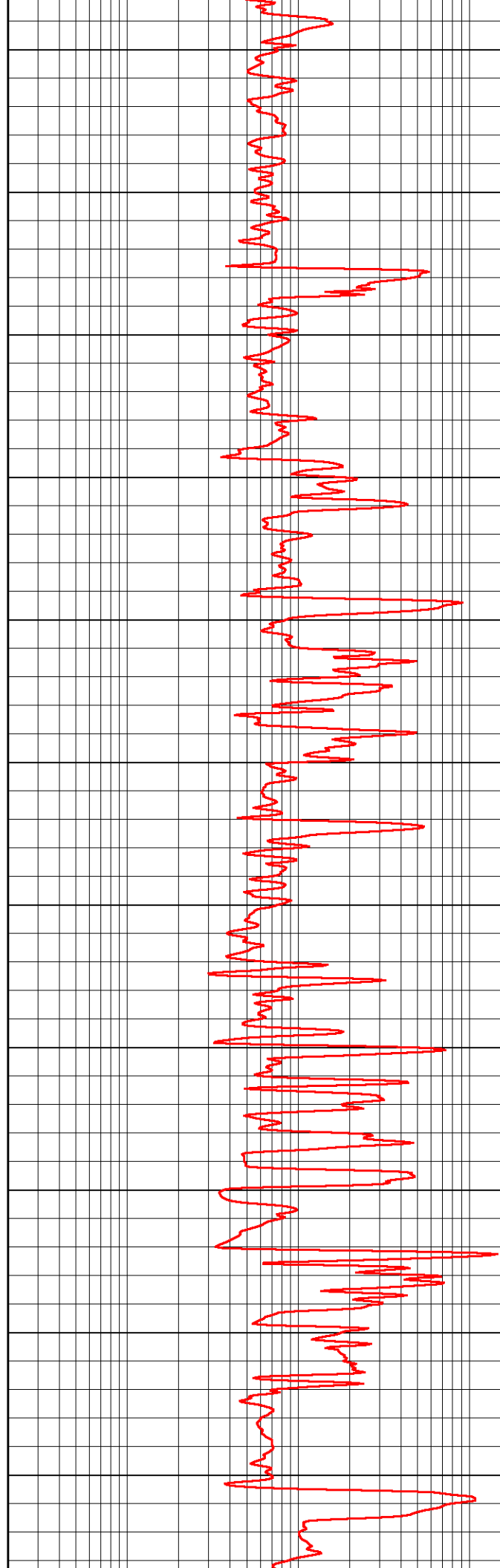
3850

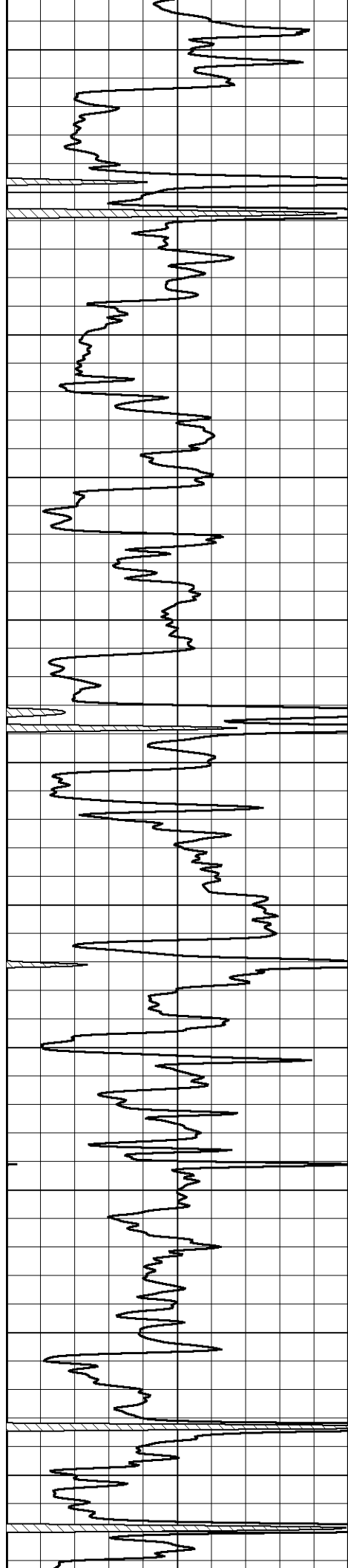
3900

3950

4000

4050





4100

4150

4200

4250

4300

4350

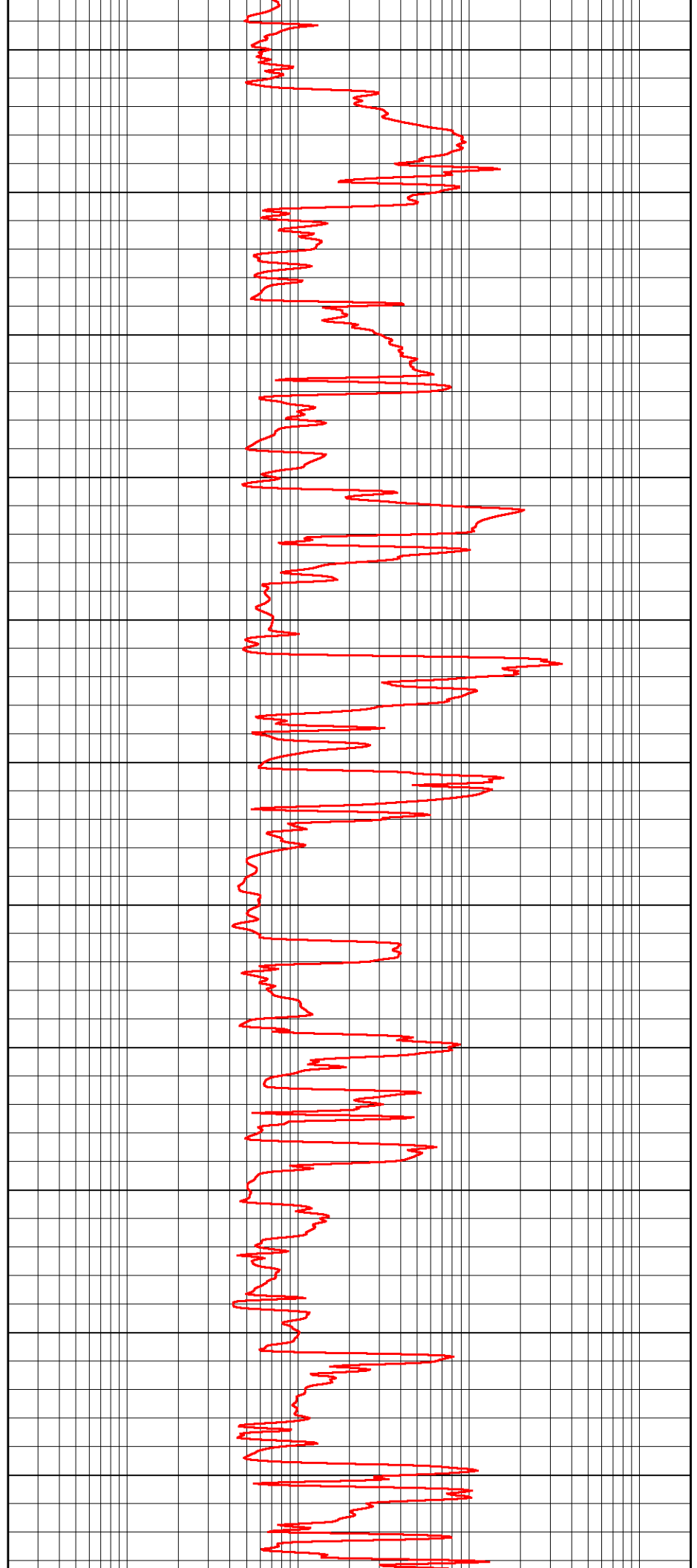
4400

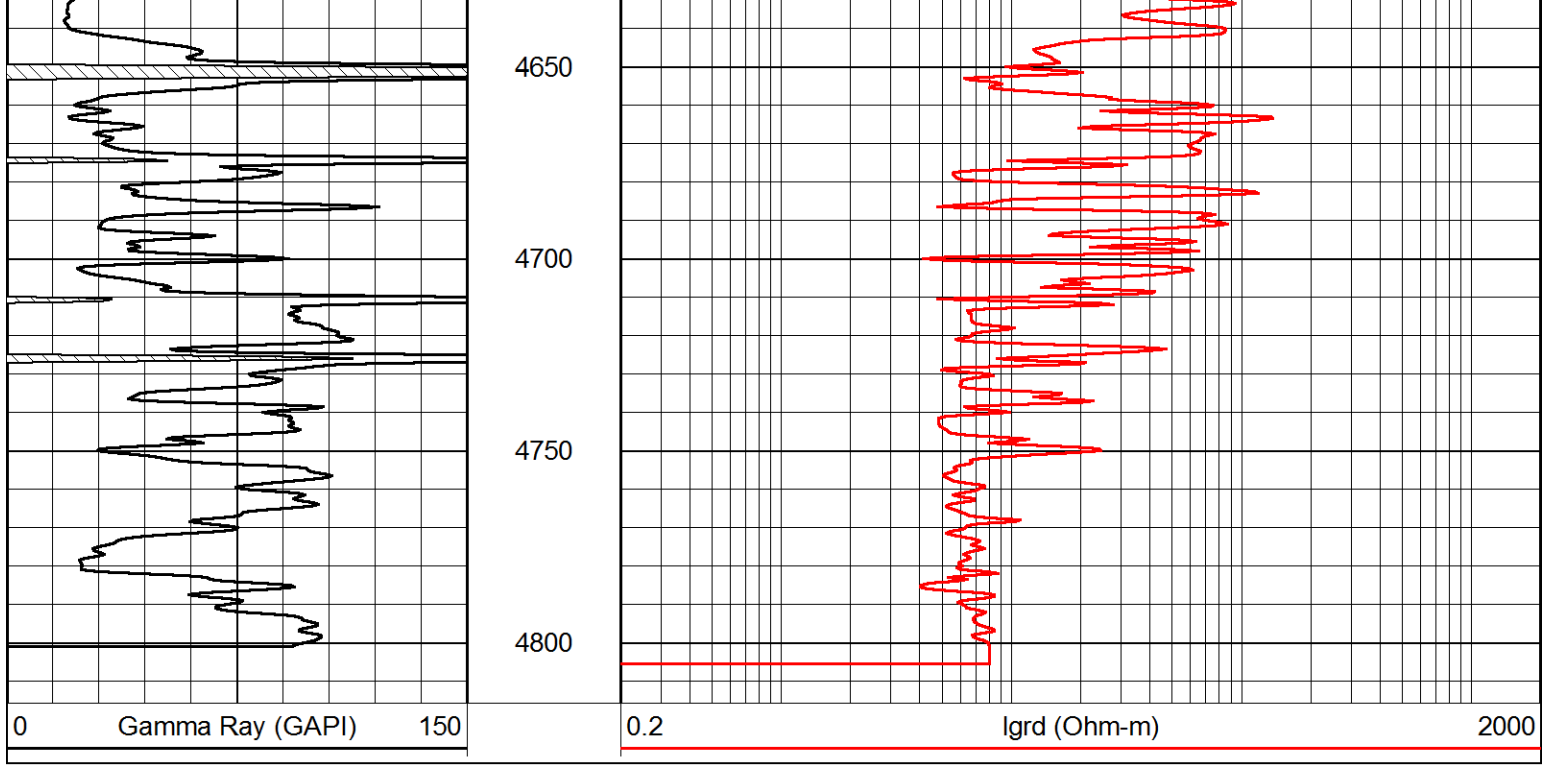
4450

4500

4550

4600

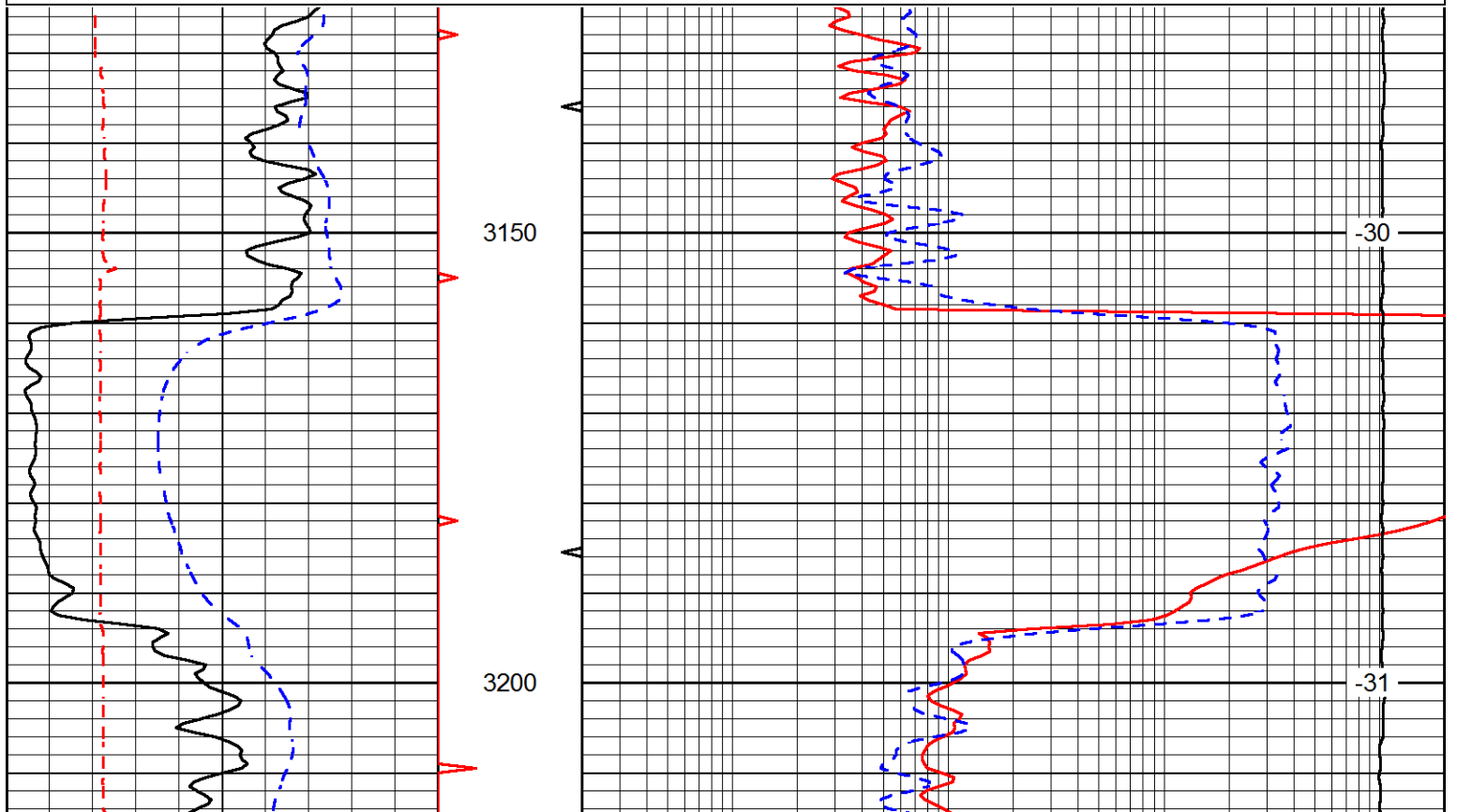


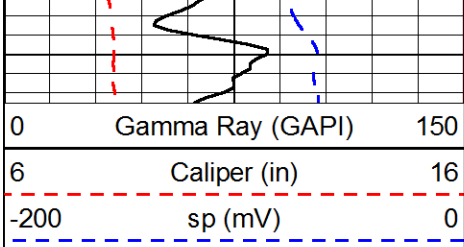


Database File      berexco\_ardene\_1-17hd.db  
 Dataset Pathname      RAG/bragme12  
 Presentation Format      rag  
 Dataset Creation      Sat Nov 07 15:05:51 2015  
 Charted by      Depth in Feet scaled 1:240

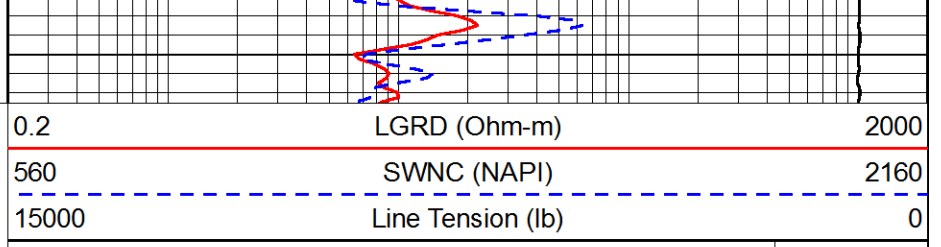
0	Gamma Ray (GAPI)	150	0.2	LGRD (Ohm-m)	2000
6	Caliper (in)	16	560	SWNC (NAPI)	2160
-200	sp (mV)	0	15000	Line Tension (lb)	0

LSPD  
(ft/min)





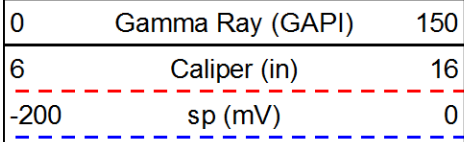
0	Gamma Ray (GAPI)	150
6	Caliper (in)	16
-200	sp (mV)	0



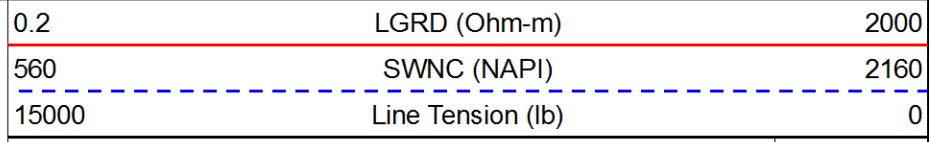
0.2	LGRD (Ohm-m)	2000
560	SWNC (NAPI)	2160
15000	Line Tension (lb)	0

LSPD  
(ft/min)

Database File berexco\_ardene\_1-17hd.db  
 Dataset Pathname RAG/bragmel  
 Presentation Format rag  
 Dataset Creation Sat Nov 07 14:48:03 2015  
 Charted by Depth in Feet scaled 1:240



0	Gamma Ray (GAPI)	150
6	Caliper (in)	16
-200	sp (mV)	0



0.2	LGRD (Ohm-m)	2000
560	SWNC (NAPI)	2160
15000	Line Tension (lb)	0

LSPD  
(ft/min)

