



**COMPENSATED  
DENSITY / NEUTRON  
LOG**

Company L.D. DRILLING, INC.  
Well #1-14 CLEM  
Field WILDCAT  
County SCOTT  
State KANSAS

Company L.D. DRILLING, INC.  
Well #1-14 CLEM  
Field WILDCAT  
County SCOTT State KANSAS

Location: API # : 15-171-21260-0000  
595' FSL & 730' FEL  
NE - SW - SE - SE  
SEC 14 TWP 16S RGE 33W  
Permanent Datum GROUND LEVEL Elevation 2996  
Log Measured From KELLY BUSHING 5' A.G.L.  
Drilling Measured From KELLY BUSHING  
Other Services  
DIL/MEL  
SONIC  
Elevation  
K.B. 3001  
D.F. 2999  
G.L. 2996

Date	10/8/79
Run Number	ONE
Depth Driller	4850
Depth Logger	4848
Bottom Logged Interval	4824
Top Log Interval	3500
Casing Driller	8 5/8" @ 261'
Casing Logger	261
Bit Size	7 7/8"
Type Fluid in Hole	CHEMICAL MUD
Density / Viscosity	9.4/55
pH / Fluid Loss	11.0/8.8
Source of Sample	FLOWLINE
Rim @ Meas. Temp	.540 @ 79F
Rmf @ Meas. Temp	.405 @ 79F
Rmc @ Meas. Temp	.648 @ 78F
Source of Rmf / Rmc	MEASUREMENT
Rim @ BHT	.340 @ 124F
Time Circulation Stopped	2 HOURS
Time Logger on Bottom	4:30 A.M.
Maximum Recorded Temperature	124F
Equipment Number	922339
Location	HAYS, KANSAS
Recorded By	JEFF LUEBBERS
Witnessed By	KIM SHOEMAKER

<<< Fold Here >>>

All interpretations are opinions based on inferences from electrical or other measurements and we cannot and do not guarantee the accuracy or correctness of any interpretation, and we shall not, except in the case of gross or willful negligence on our part, be liable or responsible for any loss, costs, damages, or expenses incurred or sustained by anyone resulting from any interpretation made by any of our officers, agents or employees. These interpretations are also subject to our general terms and conditions set out in our current Price Schedule.

Comments

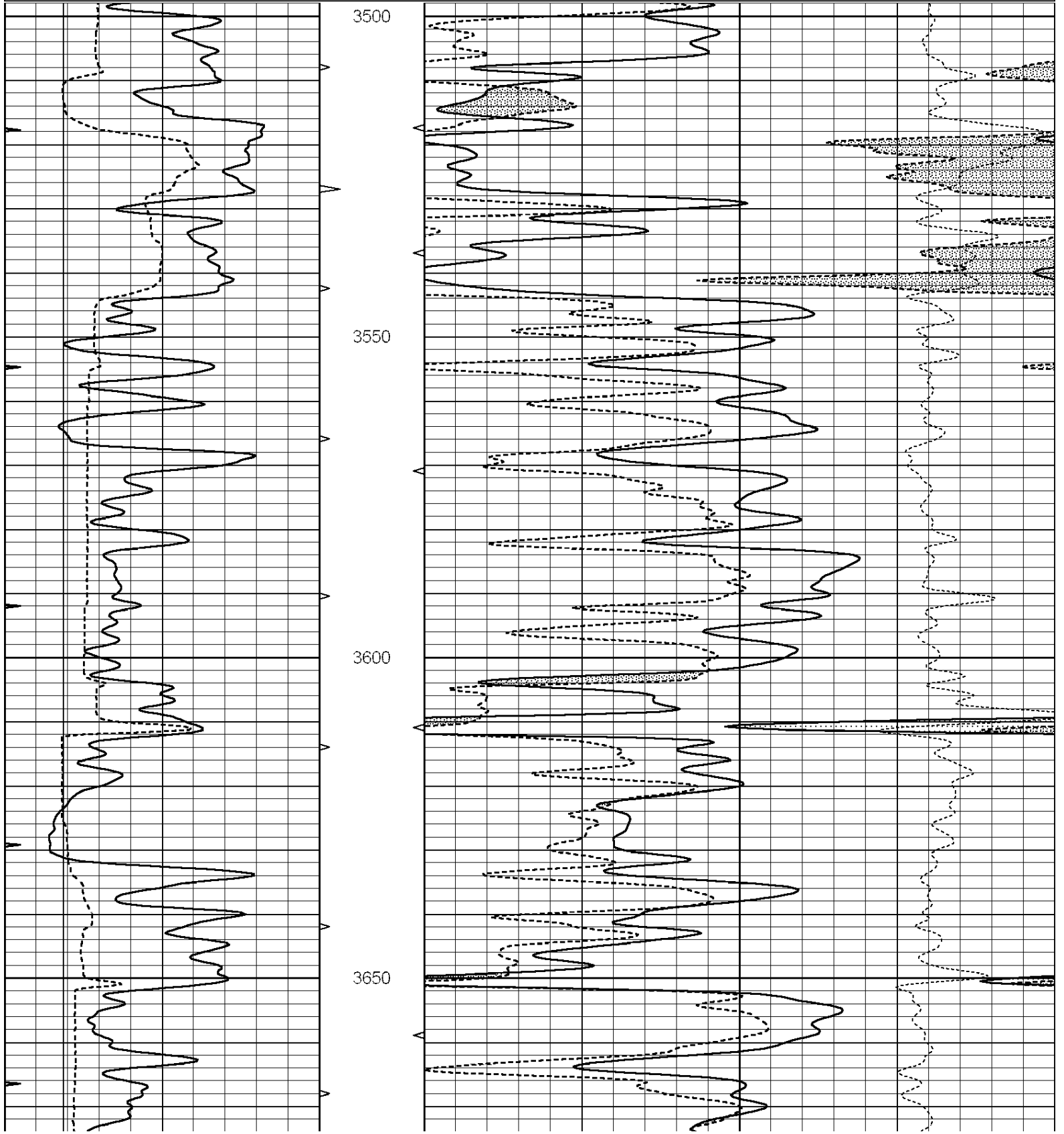
THANK YOU FOR USING ELI WIRELINE HAYS, KANSAS (785) 628-6395  
DIRECTIONS  
(SCOTT COUNTY LAKE & PENCE BLKTOP) 1W., N. INTO

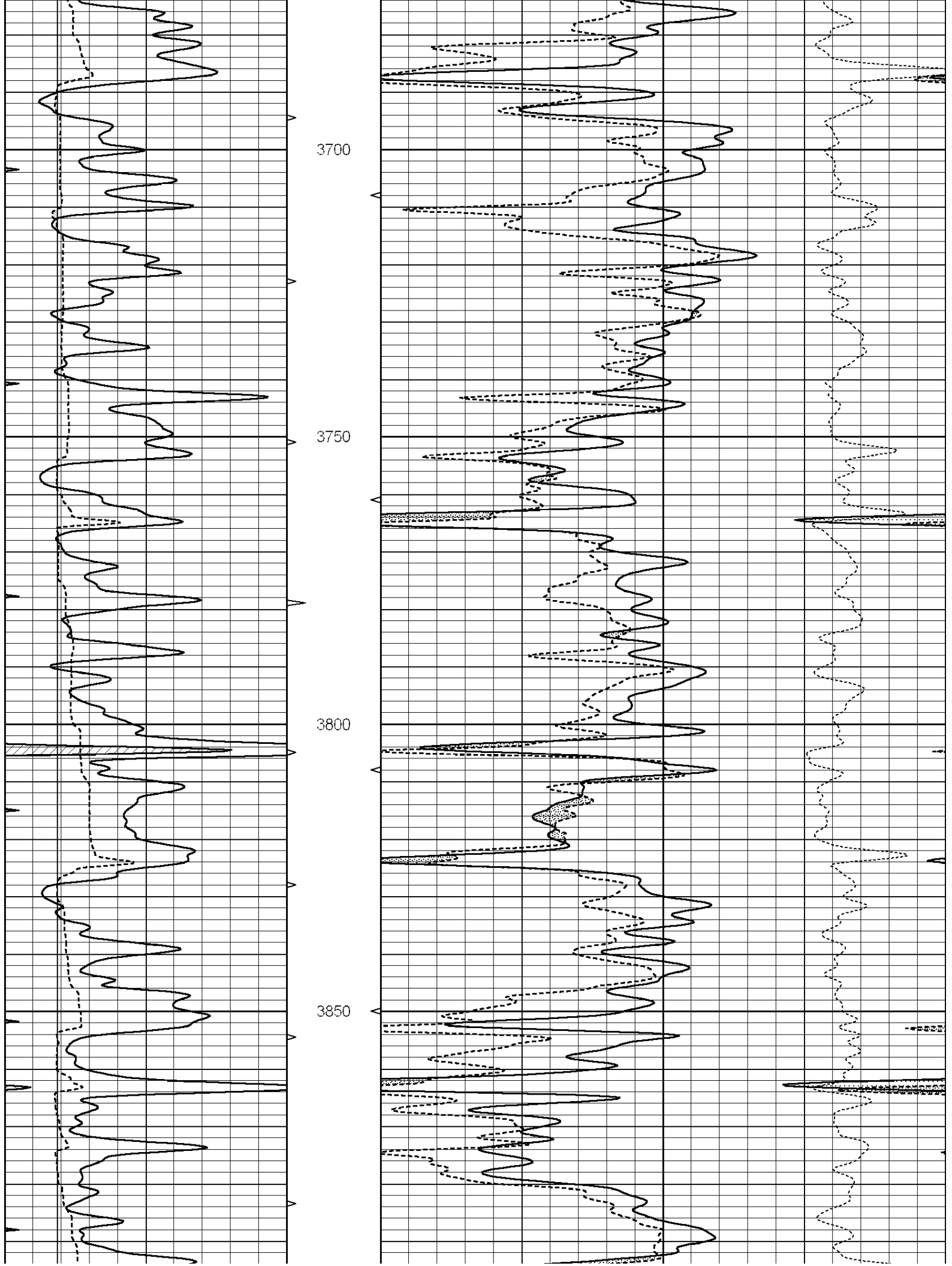


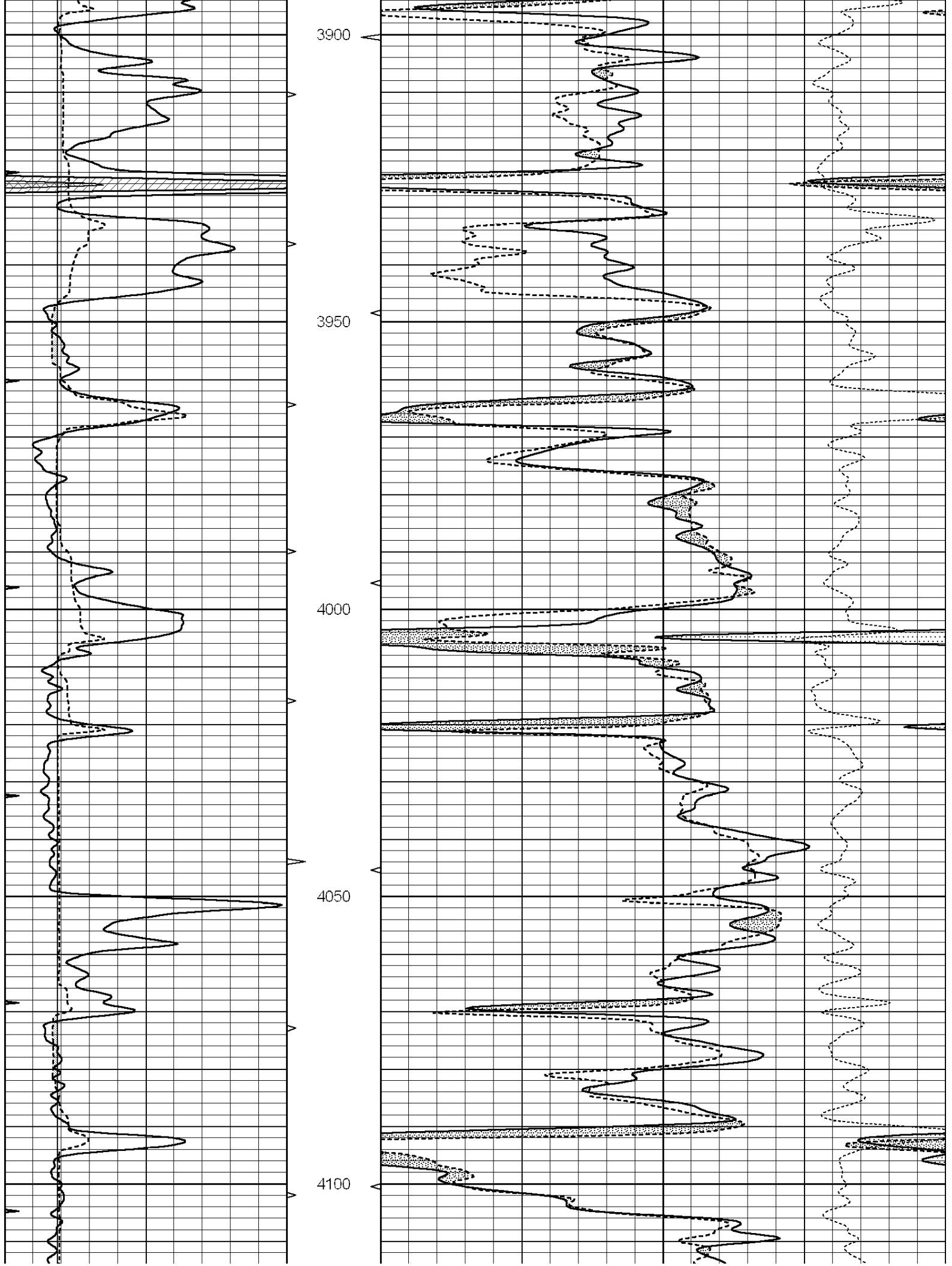
# MAIN SECTION

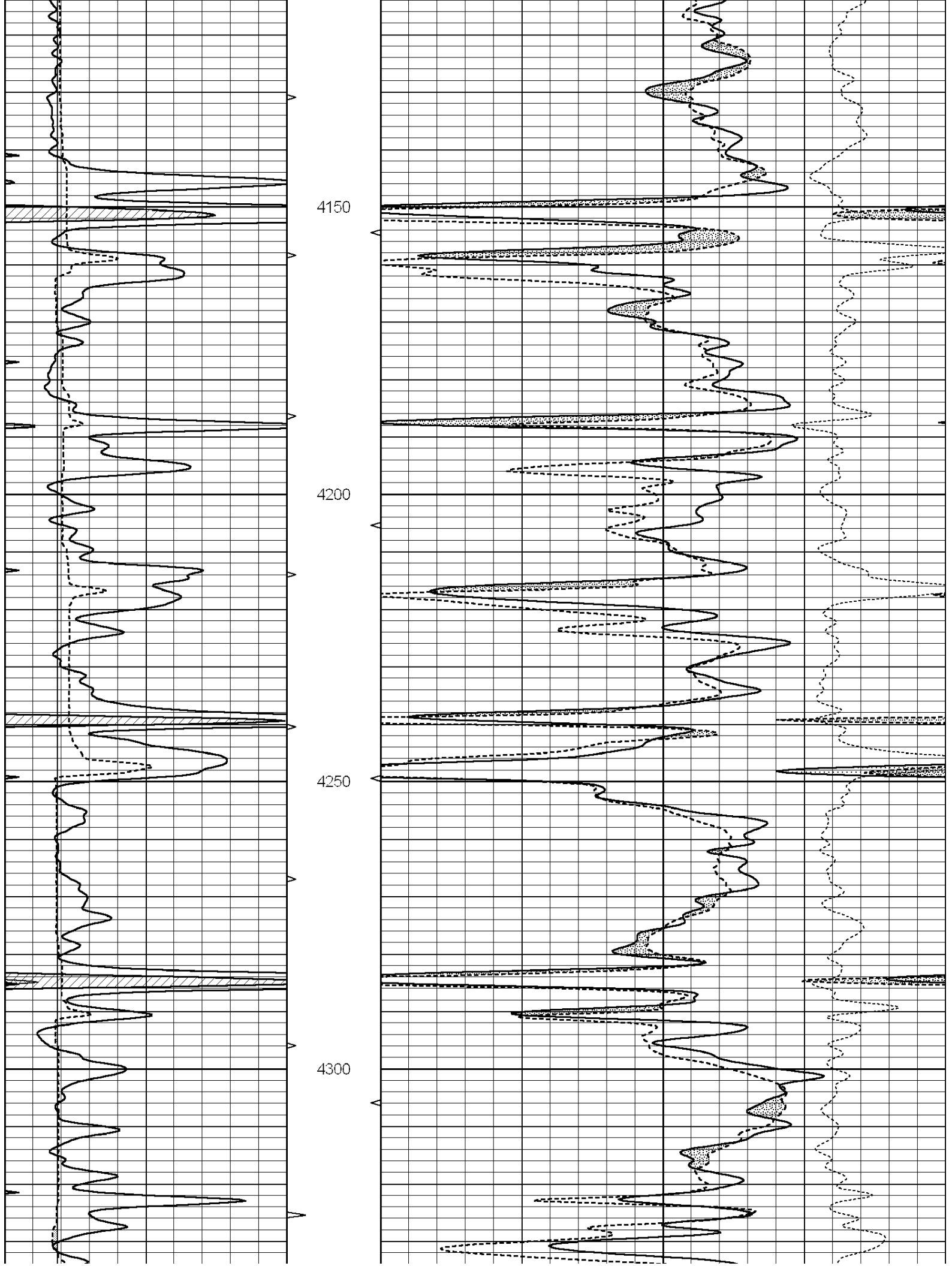
Database File: 3970ddn.db  
 Dataset Pathname: pass3.1M  
 Presentation Format: den\_neu  
 Dataset Creation: Tue Oct 08 06:04:32 2019  
 Charted by: Depth in Feet scaled 1:240

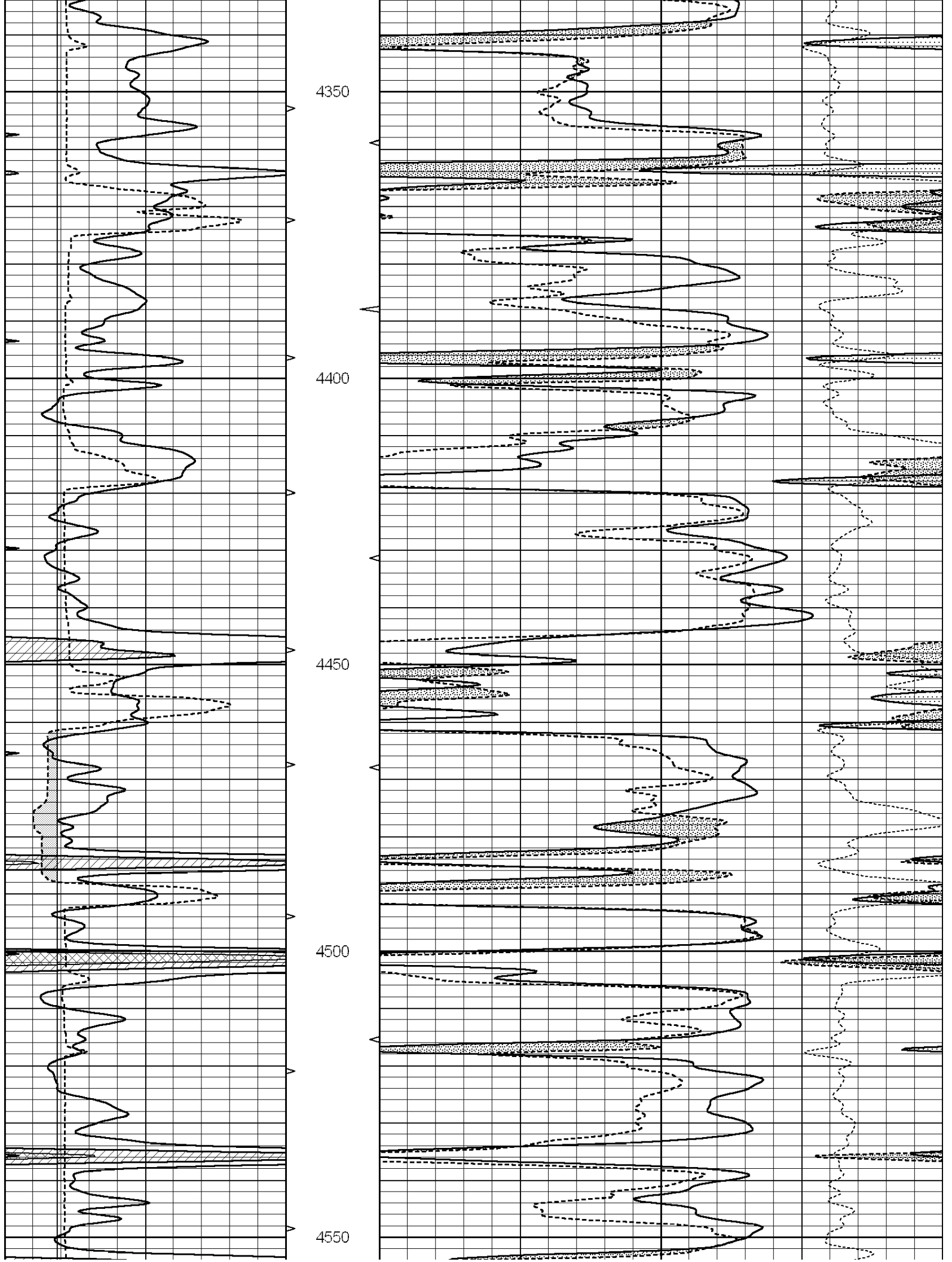
0	GAMMA RAY (GAPI)	150	ABHV	30	COMPENSATED DENSITY (pu)	-10
6	DCAL (in)	16	10 (ft3)	0 30	COMPENSATED NEUTRON (pu)	-10
0	MINMK	20	TBHV		-0.25 CORRECTION (g/cc)	0.25
			0 (ft3)	10		

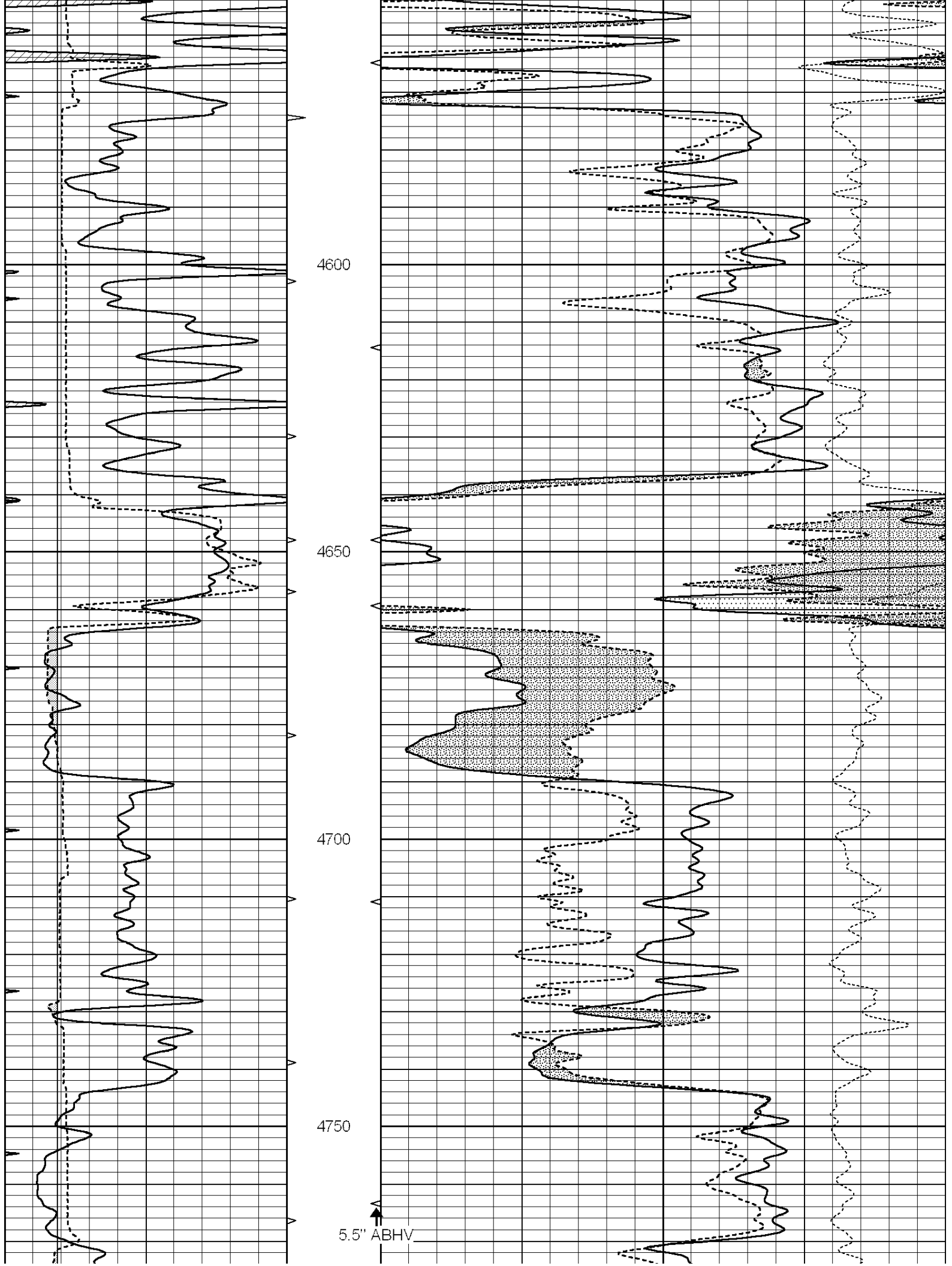


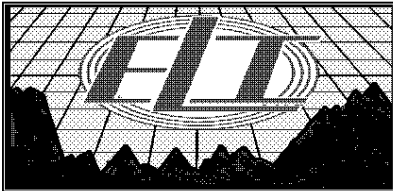
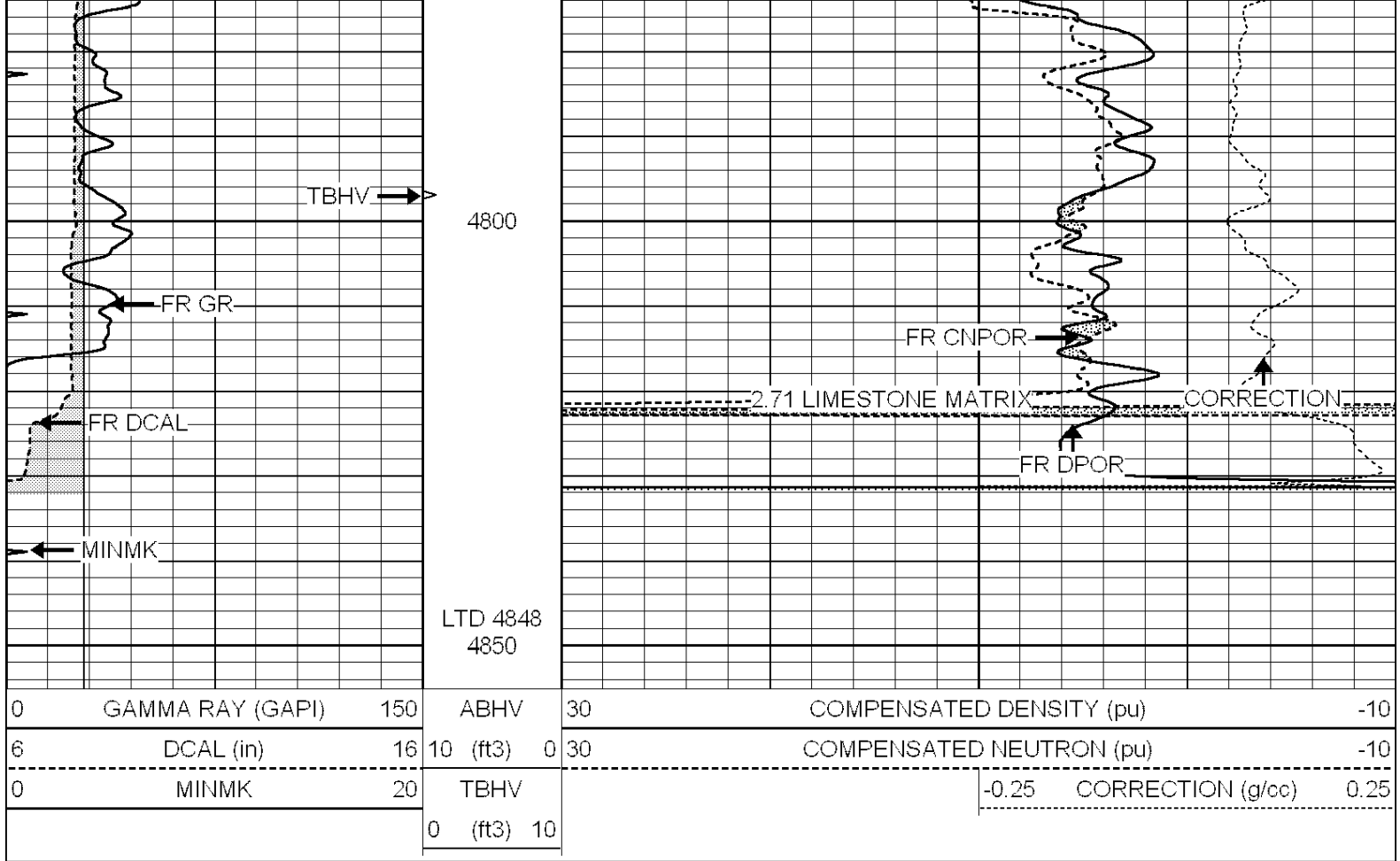








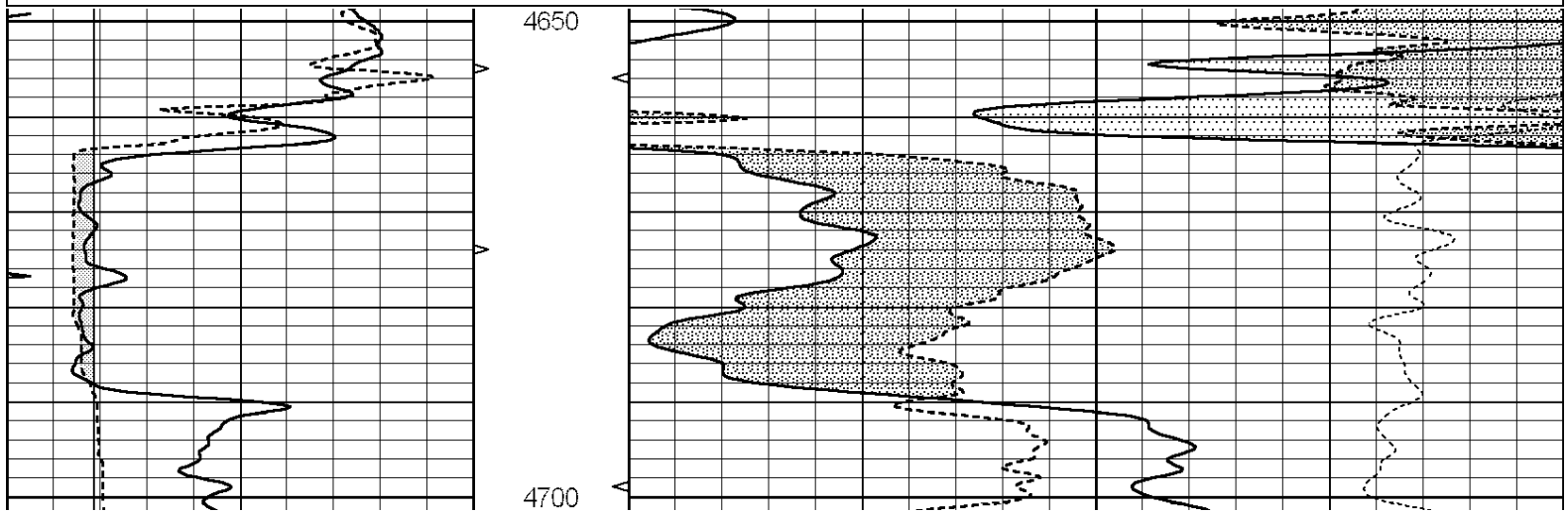


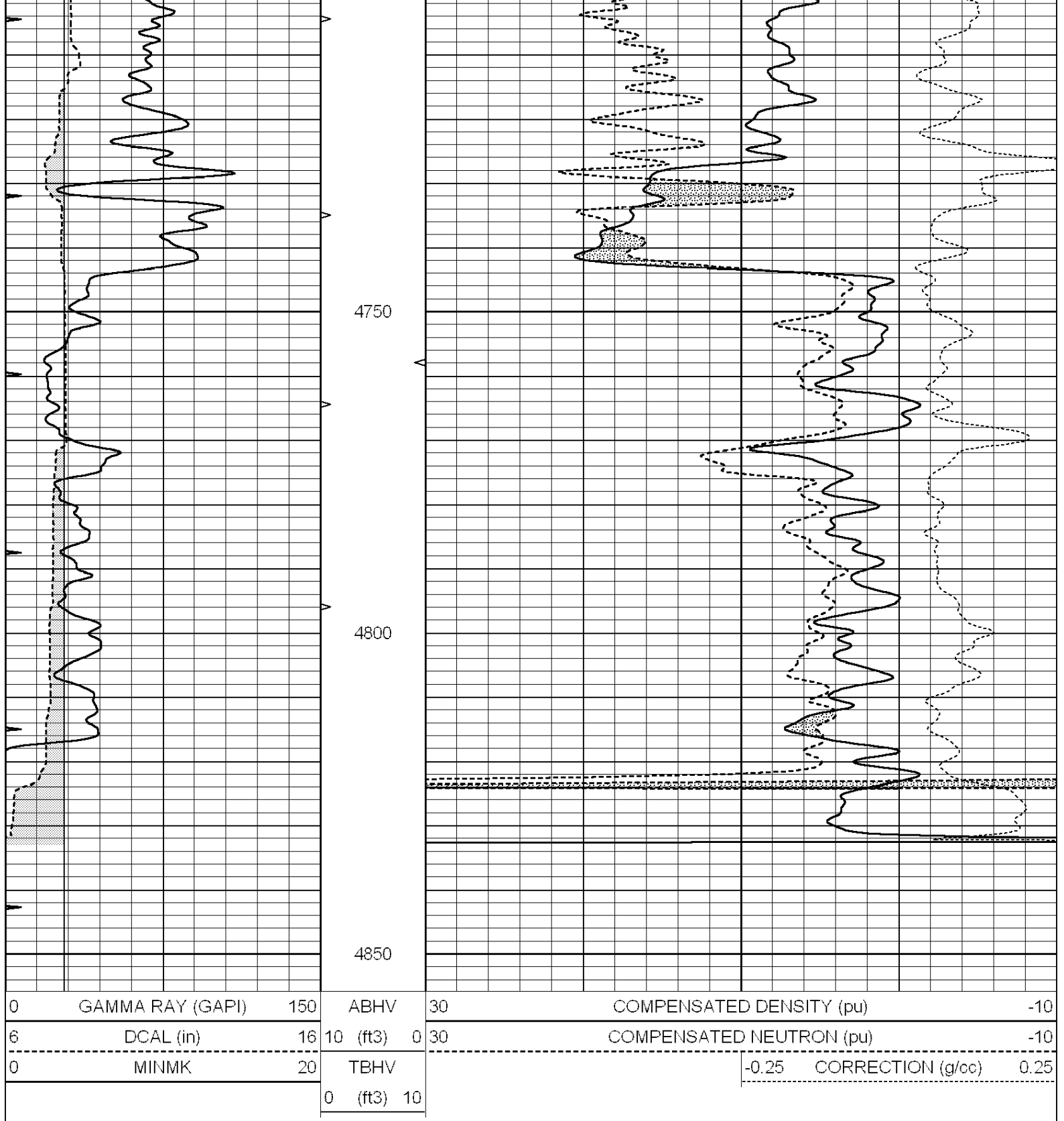


# REPEAT SECTION

Database File: 3970ddn.db  
 Dataset Pathname: pass2.6  
 Presentation Format: den\_neu  
 Dataset Creation: Tue Oct 08 06:15:15 2019 by Calc SOC 120430  
 Charted by: Depth in Feet scaled 1:240

0	GAMMA RAY (GAPI)	150	ABHV	30	COMPENSATED DENSITY (pu)	-10
6	DCAL (in)	16	10 (ft3)	0 30	COMPENSATED NEUTRON (pu)	-10
0	MINMK	20	TBHV		-0.25	CORRECTION (g/cc) 0.25
			0 (ft3)	10		





Calibration Report

Database File: 1598ddn.db  
 Dataset Pathname: pass4  
 Dataset Creation: Wed Aug 30 02:13:00 2017 by Log SOC 120430

Dual Induction Calibration Report

Serial-Model:	PROBE7-DILG
Surface Cal Performed:	Wed Aug 30 00:06:33 2017
Downhole Cal Performed:	Mon Jul 28 12:02:56 2008
After Survey Verification Performed:	Mon Jul 28 12:02:56 2008

Surface Calibration			Readings		References		Results	
Loop:	Air	Loop		Air	Loop		m	b
Deep	-0.014	0.629	V	0.000	400.000	mmho/m	620.000	0.000
Medium	0.039	0.728	V	0.000	464.000	mmho/m	675.000	-44.000
Internal:	Zero	Cal		Zero	Cal		m	b
Deep	0.011	0.610	V	0.000	400.000	mmho/m	667.135	-7.256
Medium	0.005	0.712	V	0.000	464.000	mmho/m	655.677	-3.102

Downhole Calibration			Readings		References		Results	
	Zero	Cal		Zero	Cal		m'	b'
Deep	0.000	0.000	mmho/m	14.508	388.384	mmho/m	1.000	0.000
Medium	0.000	0.000	mmho/m	166.367	504.400	mmho/m	1.000	0.000
LL3		7.500	V		1400.000	Ohm-m		
		0.000	V		20.000	Ohm-m		
		-7.200	V		4000.000	mmho-m		

After Survey Verification			Readings		Targets		Results	
	Zero	Cal		Zero	Cal		m'	b'
Deep	0.000	0.000	mmho/m	0.000	0.000	mmho/m	0.000	0.000
Medium	0.000	0.000	mmho/m	0.000	0.000	mmho/m	0.000	0.000
LL3		1.000	Ohm-m		1.000	Ohm-m		
		0.000	Ohm-m		0.000	Ohm-m		
		1.000	mmho-m		1.000	mmho-m		

Litho Density Calibration Report  
Serial: 002      Model: PRB

Master Calibration		Performed Mon Aug 21 11:27:42 2017			
	Background	Magnesium	Aluminum	Sandstone	
Window 1	837.1	10632.5	2945.1	12110.1	cps
Window 2	772.0	9117.4	2570.1	10197.3	cps
Window 3	631.7	4669.0	1481.9	5042.9	cps
Window 4	187.0	187.5	185.9	189.9	cps
Long Space	0.0	8345.4	1798.1	9425.3	cps
Short Space	1.1	1927.9	1285.9	2050.2	cps
Rho		1.7100	2.5960	1.3800	g/cc
Pe		0.0000	2.5700	1.5500	
Rib Angle	: 45.2	Rib Slope	: 1.008	Density/Spine Ratio	: 0.558
Spine Angle	: 75.2	Spine Slope	: 3.790	Spine Intercept	: -19.6

Before Survey Verification		Performed Wed Dec 31 18:00:00 1969			
Window 1	0.0	0.0	0.0	0.0	cps
Window 2	0.0	0.0	0.0	0.0	cps
Window 3	0.0	0.0	0.0	0.0	cps
Window 4	0.0	0.0	0.0	0.0	cps
Long Space	0.0	0.0	0.0	0.0	cps
Short Space	0.0	0.0	0.0	0.0	cps
Measured Rho		0.0000	0.0000	0.0000	g/cc
Measured Correction		0.0000	0.0000	0.0000	g/cc
Measured Pe			0.0000	0.0000	

Window 1	0.0	0.0	0.0	0.0	cps
Window 2	0.0	0.0	0.0	0.0	cps
Window 3	0.0	0.0	0.0	0.0	cps
Window 4	0.0	0.0	0.0	0.0	cps
Long Space	0.0	0.0	0.0	0.0	cps
Short Space	0.0	0.0	0.0	0.0	cps
Measured Rho		0.0000	0.0000	0.0000	g/cc
Measured Correction		0.0000	0.0000	0.0000	g/cc
Measured Pe			0.0000	0.0000	

## Compensated Neutron Calibration Report

Serial Number: 070808  
Tool Model: Probe

## PRE-SURVEY VERIFICATION

Detector	Readings	Measured	Target
Short Space	cps		
Long Space	cps	pu	pu

## POST-SURVEY VERIFICATION

Detector	Readings	Measured	Target
Short Space	cps		
Long Space	cps	pu	pu

## Gamma Ray Calibration Report

Serial Number: 070558  
Tool Model: OPEN\_GR  
Performed: Wed May 31 00:09:32 2017

Calibrator Value: 1.0 GAPI

Background Reading: 0.0 cps  
Calibrator Reading: 1.0 cps

Sensitivity: 0.2800 GAPI/cps