



**MICRO  
LOG**

Company L.D. DRILLING, INC.  
Well #1-14 CLEM  
Field WILDCAT  
County SCOTT  
State KANSAS

Company L.D. DRILLING, INC.  
Well #1-14 CLEM  
Field WILDCAT  
County SCOTT State KANSAS

Location: API # : 15-171-21260-0000  
595' FSL & 730' FEL  
NE - SW - SE - SE  
SEC 14 TWP 16S RGE 33W  
Permanent Datum GROUND LEVEL Elevation 2996  
Log Measured From KELLY BUSHING 5' A.G.L.  
Drilling Measured From KELLY BUSHING  
Elevation  
K.B. 3001  
D.F. 2999  
G.L. 2996

Date	10/8/79
Run Number	TWO
Depth Driller	4850
Depth Logger	4848
Bottom Logged Interval	4832
Top Log Interval	3500
Casing Driller	8 5/8" @ 261'
Casing Logger	261
Bit Size	7 7/8"
Type Fluid in Hole	CHEMICAL MUD
Density / Viscosity	9.4/55
pH / Fluid Loss	11.0/8.8
Source of Sample	FLOWLINE
Rim @ Meas. Temp	.540 @ 79F
Rmf @ Meas. Temp	.405 @ 79F
Rmc @ Meas. Temp	.648 @ 78F
Source of Rmf / Rmc	MEASUREMENT
Rim @ BHT	.340 @ 124F
Time Circulation Stopped	4 HOURS
Time Logger on Bottom	7:00 A.M.
Maximum Recorded Temperature	124F
Equipment Number	922339
Location	HAYS, KANSAS
Recorded By	JEFF LUEBBERS
Witnessed By	KIM SHOEMAKER

<<< Fold Here >>>

All interpretations are opinions based on inferences from electrical or other measurements and we cannot and do not guarantee the accuracy or correctness of any interpretation, and we shall not, except in the case of gross or willful negligence on our part, be liable or responsible for any loss, costs, damages, or expenses incurred or sustained by anyone resulting from any interpretation made by any of our officers, agents or employees. These interpretations are also subject to our general terms and conditions set out in our current Price Schedule.

**Comments**

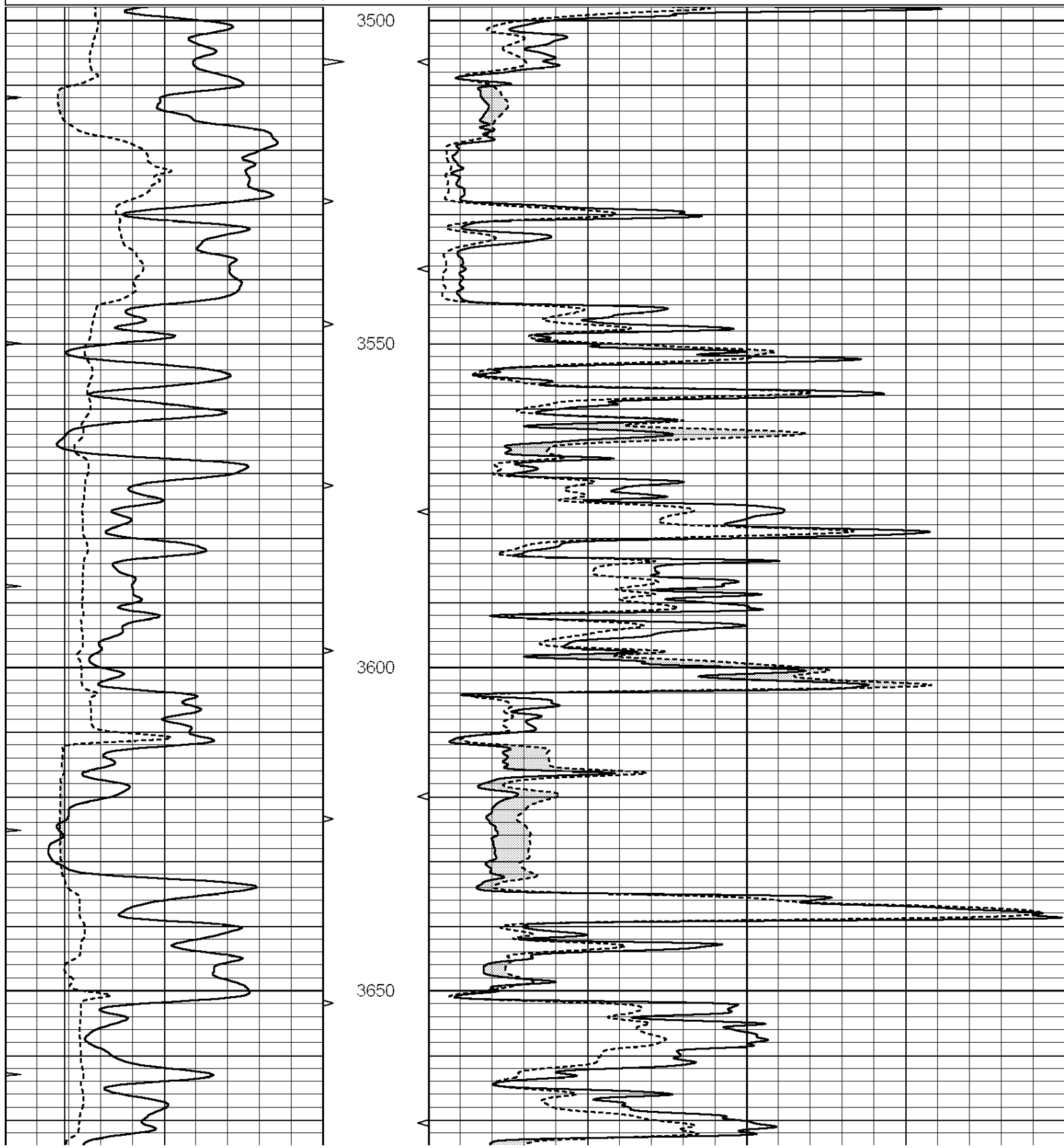
THANK YOU FOR USING ELI WIRELINE HAYS, KANSAS (785) 628-6395  
DIRECTIONS  
(SCOTT COUNTY LAKE & PENCE BLKTOP) 1W., N. INTO

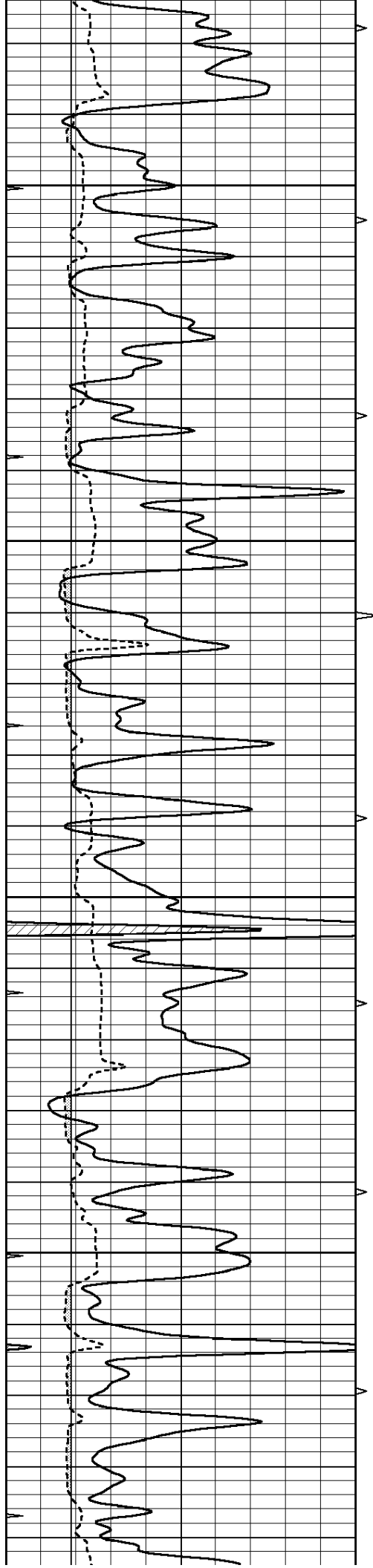


**MAIN SECTION**

Database File: 3970ddn.db  
 Dataset Pathname: pass6.1  
 Presentation Format: micro  
 Dataset Creation: Tue Oct 08 07:51:44 2019 by Calc SOC 120430  
 Charted by: Depth in Feet scaled 1:240

0	GAMMA RAY (GAPI)	150	ABHV	0	MEL1.5 (Ohm-m)	40
6	CALIPER (in)	16	10 (ft3)	0 0	MEL 20 (Ohm-m)	40
0	MINMK	20	TBHV			
			0 (ft3)	10		



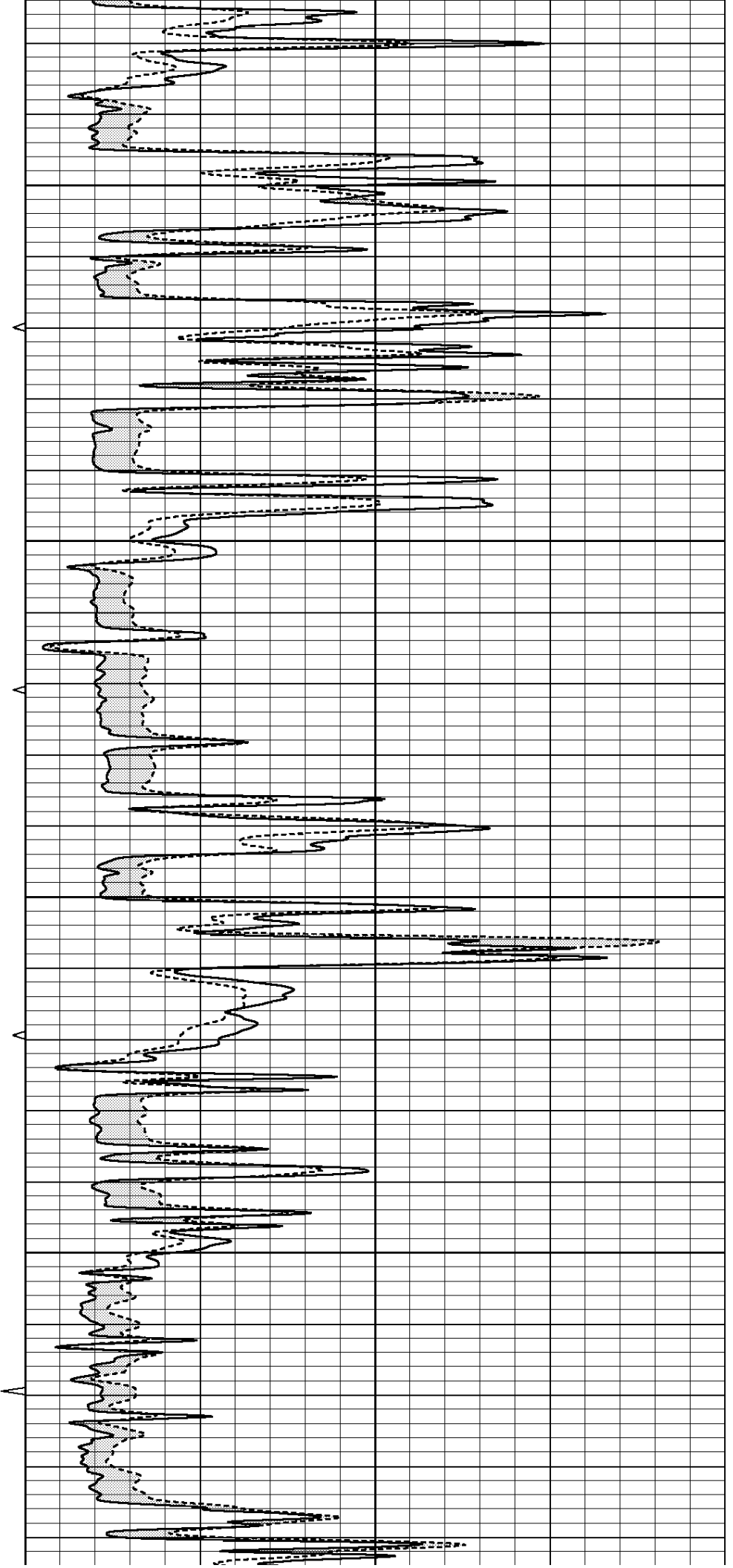


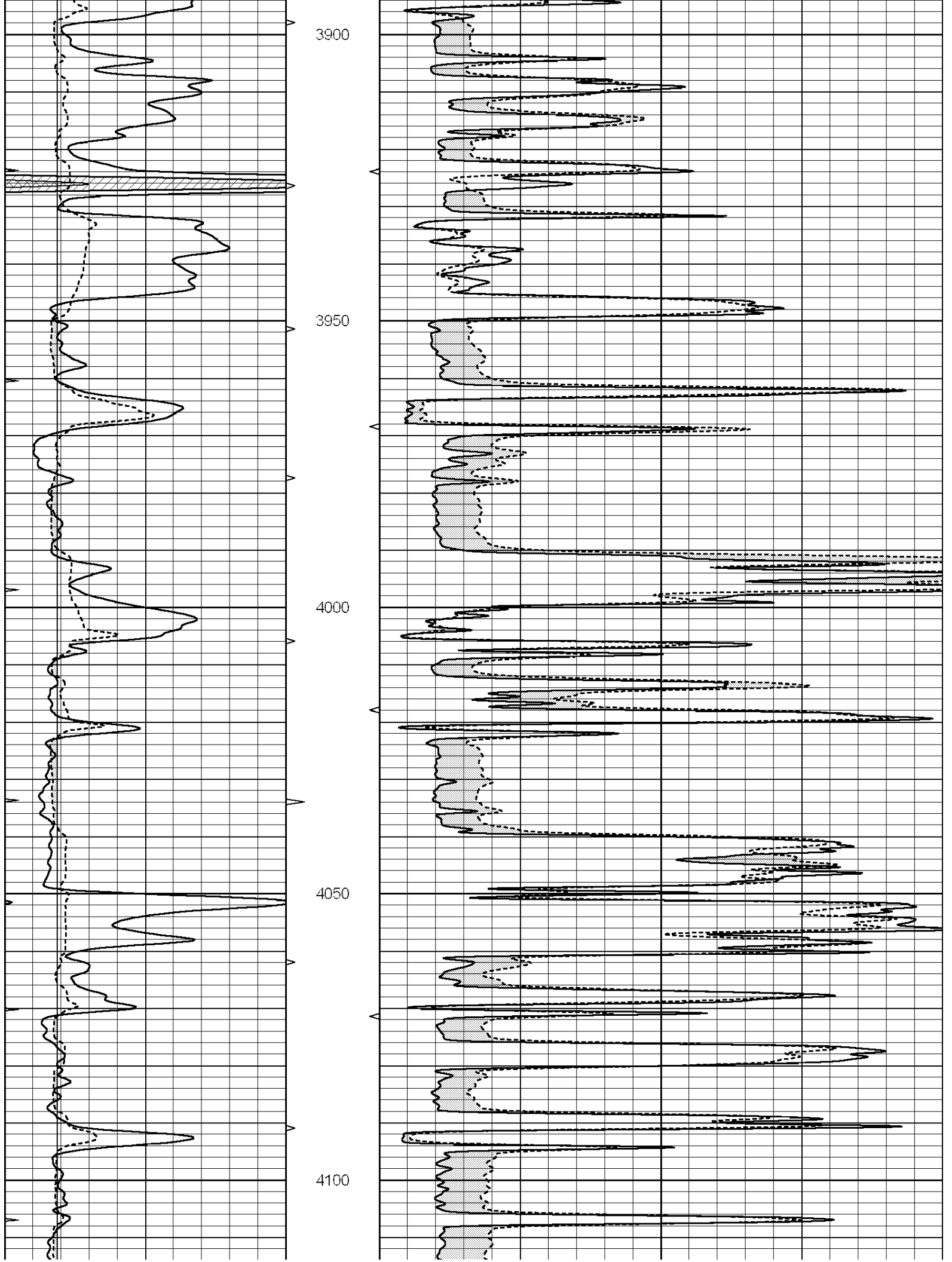
3700

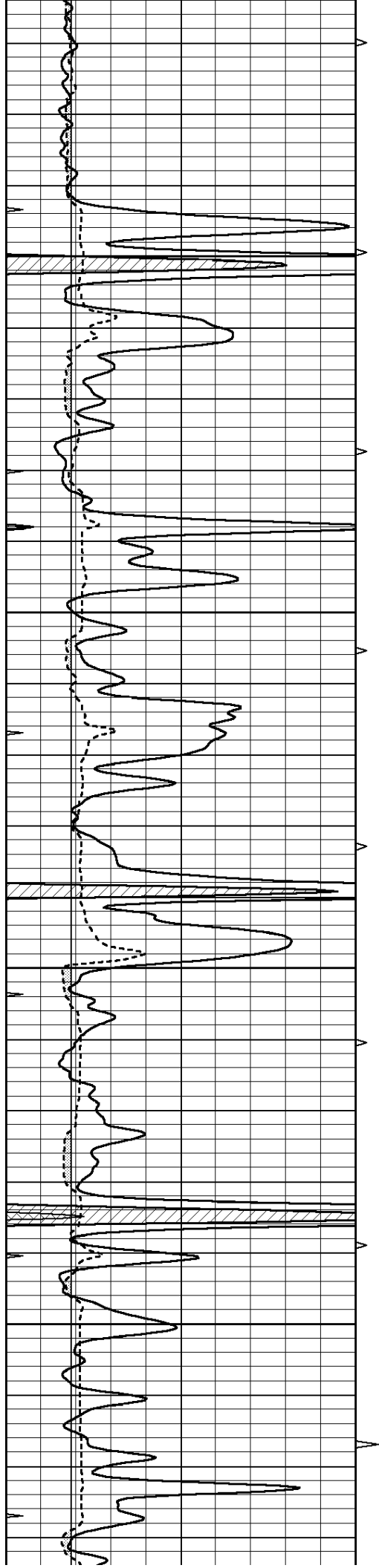
3750

3800

3850





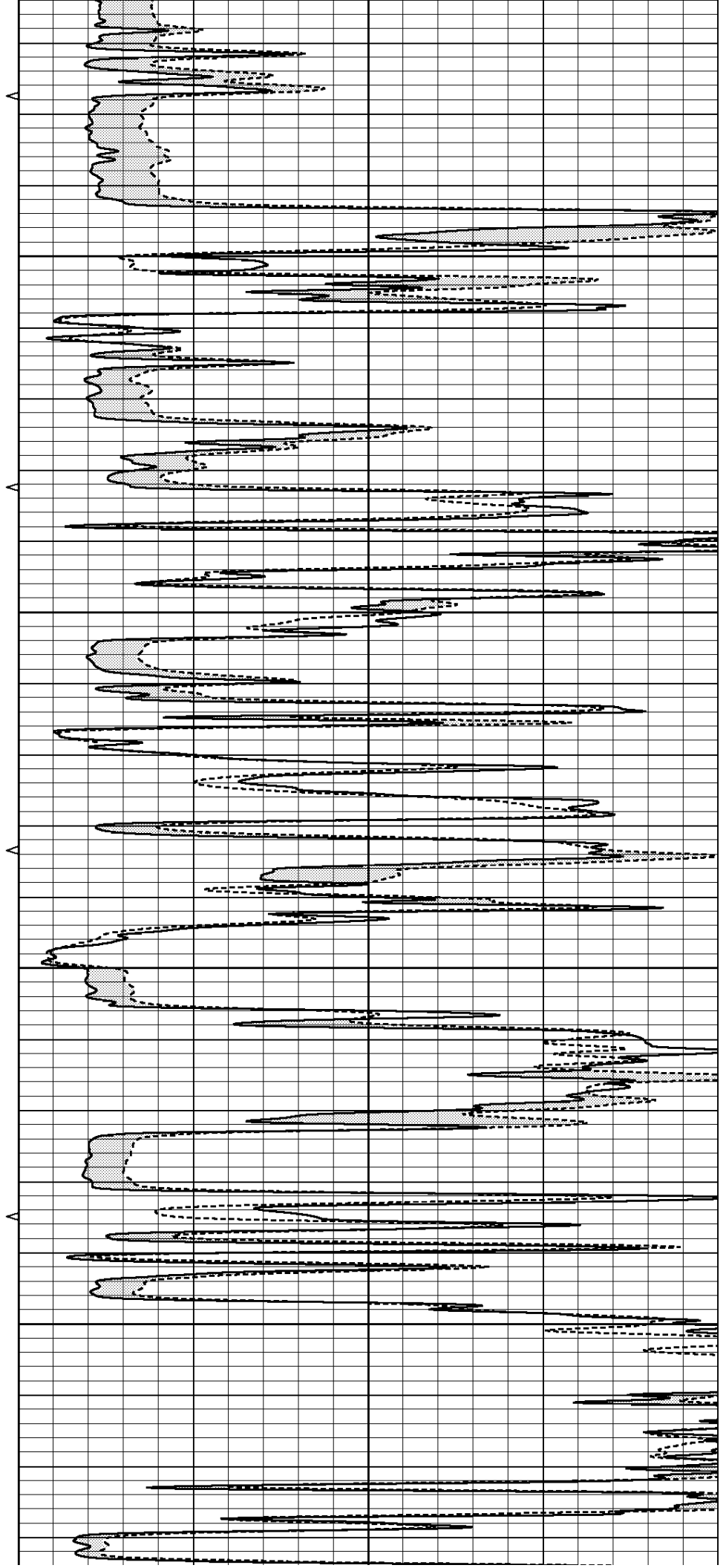


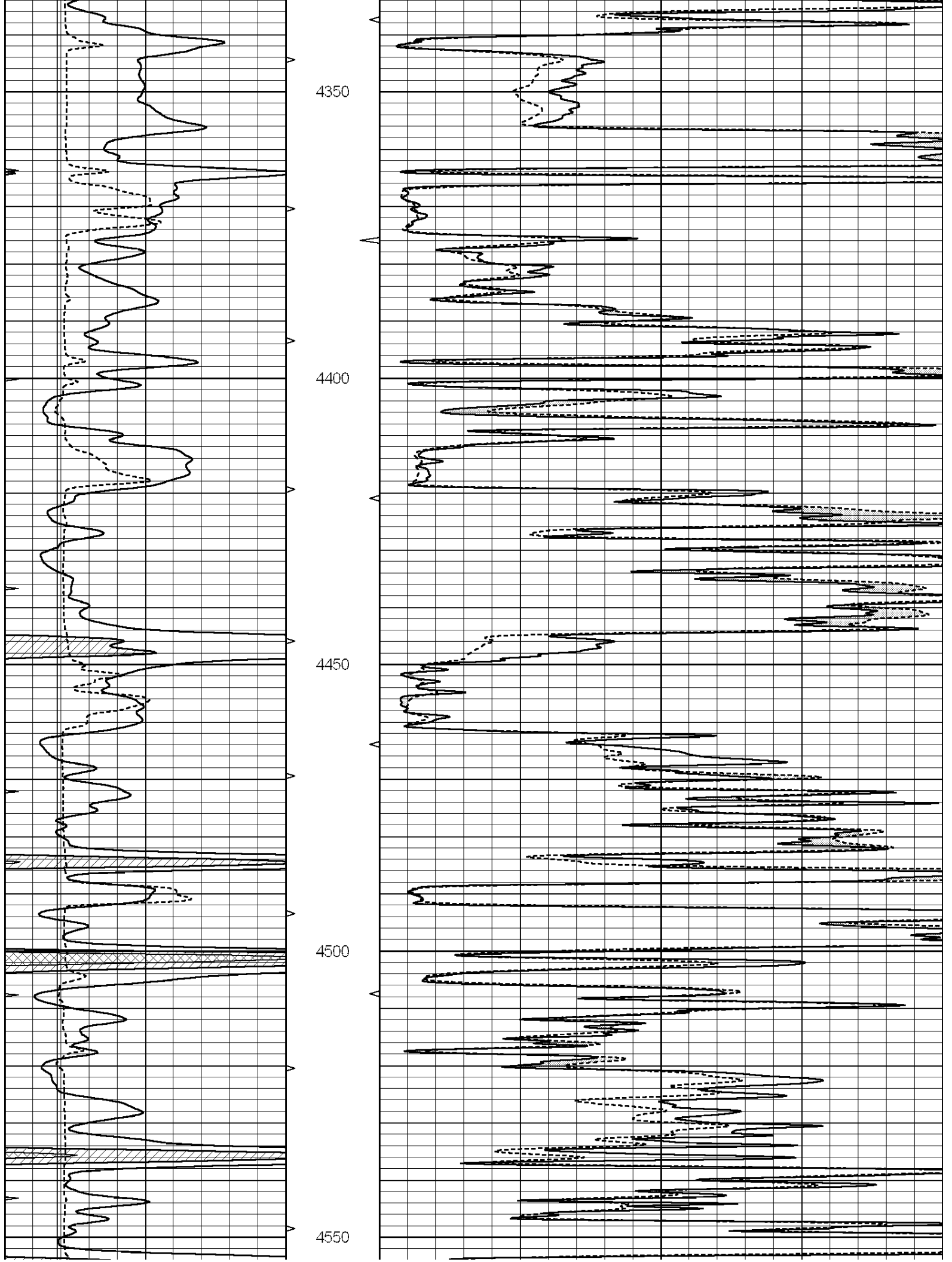
4150

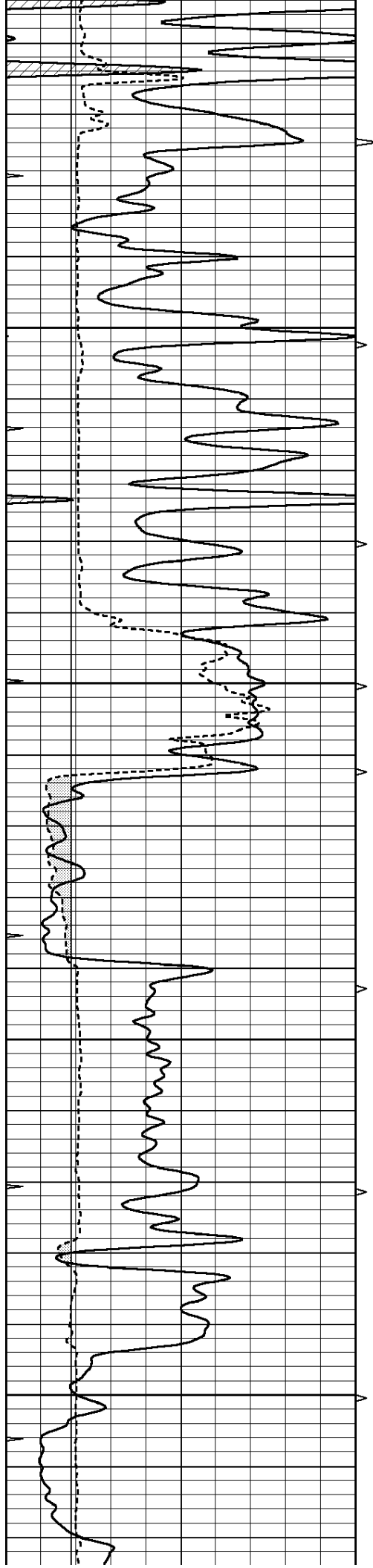
4200

4250

4300





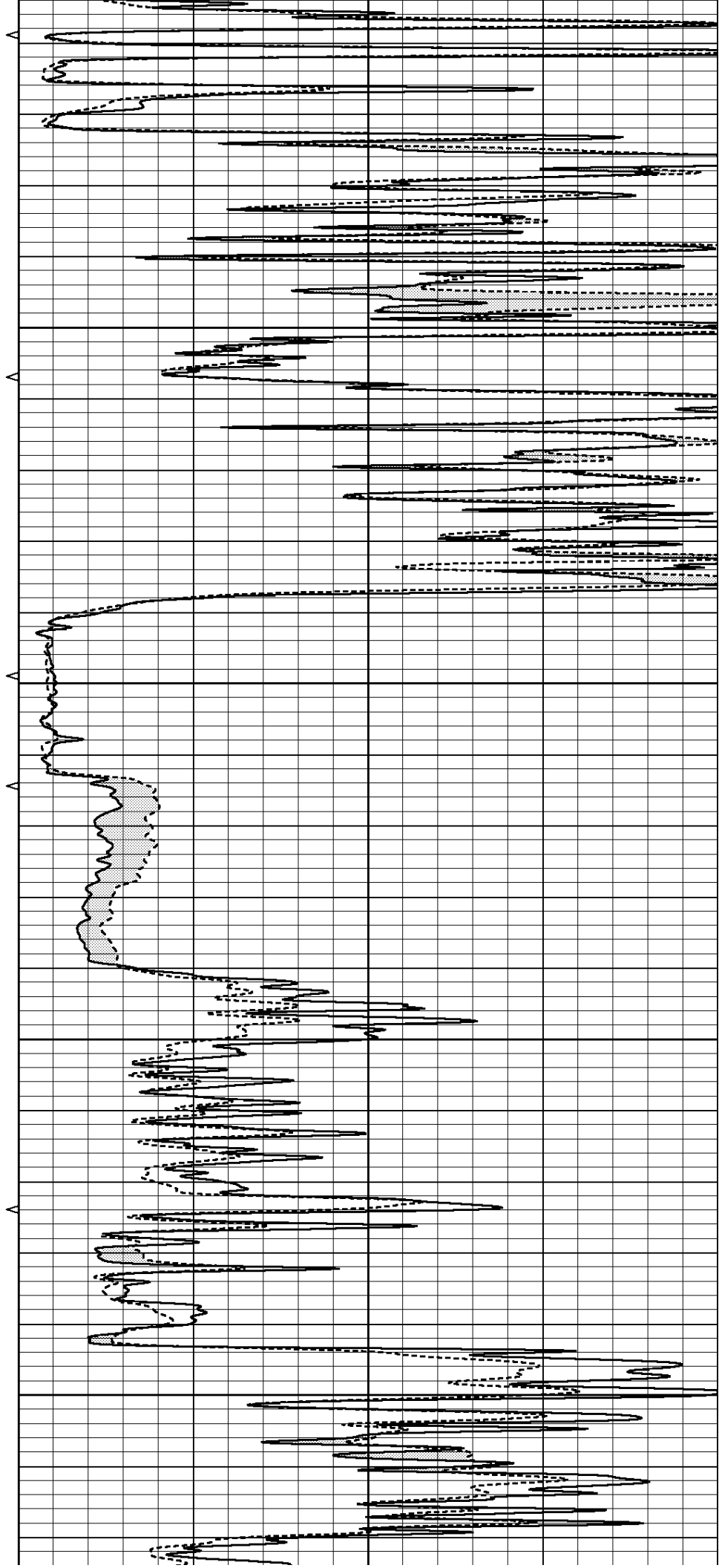


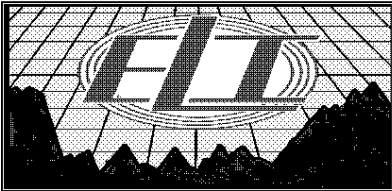
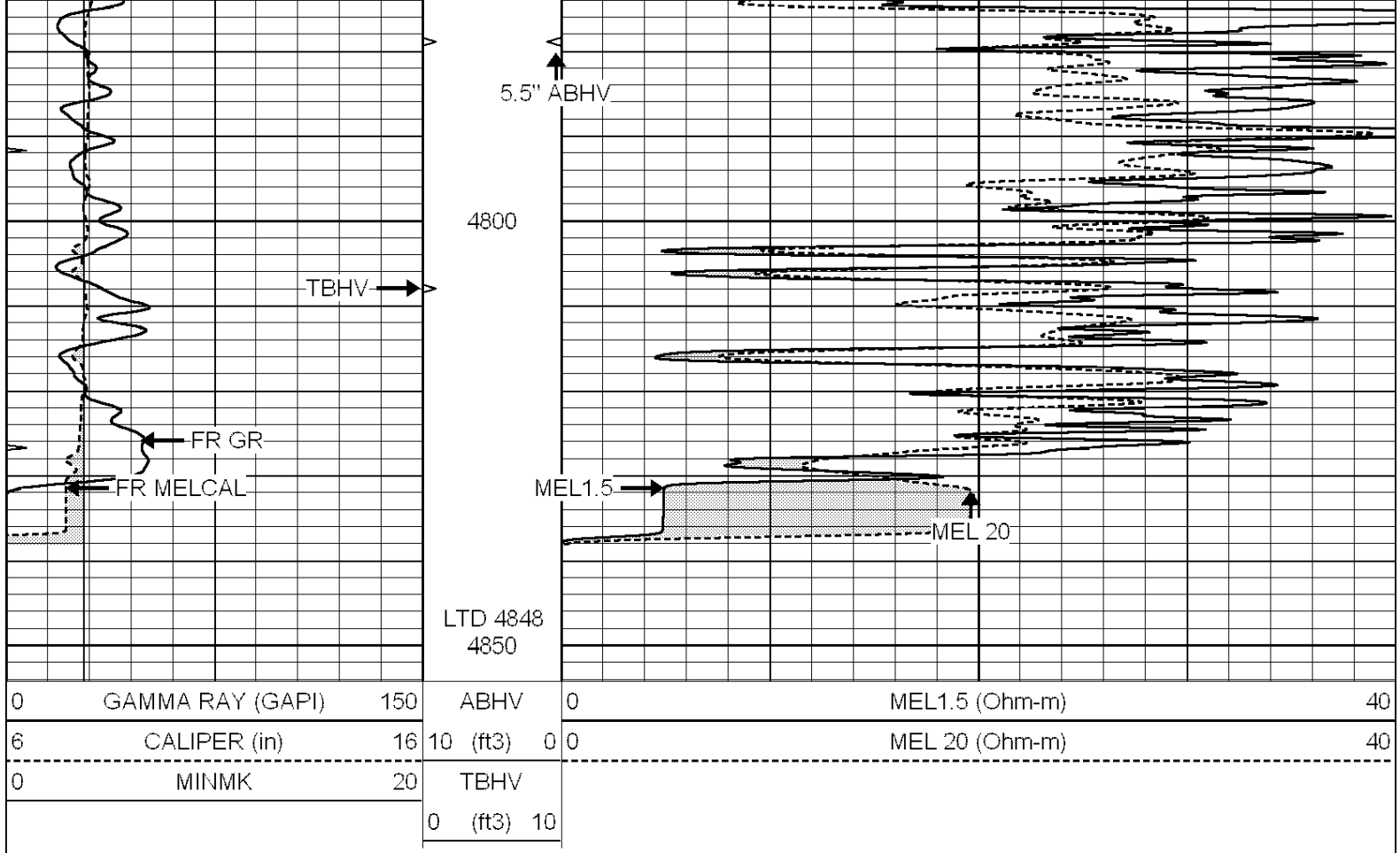
4600

4650

4700

4750

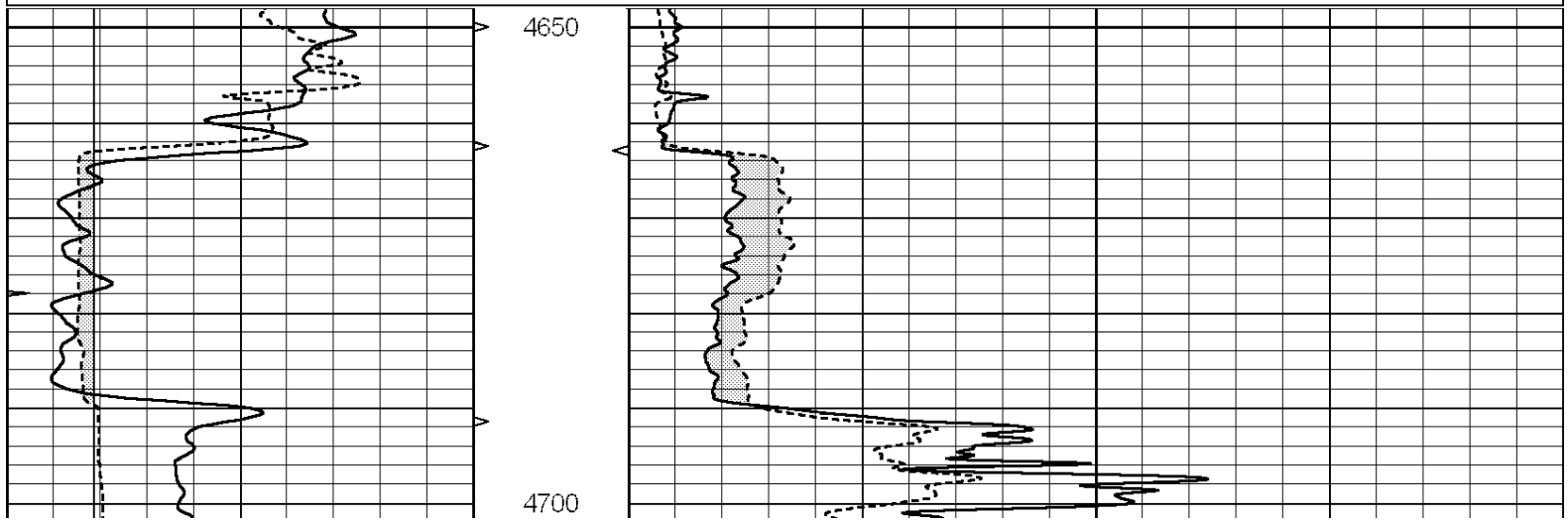


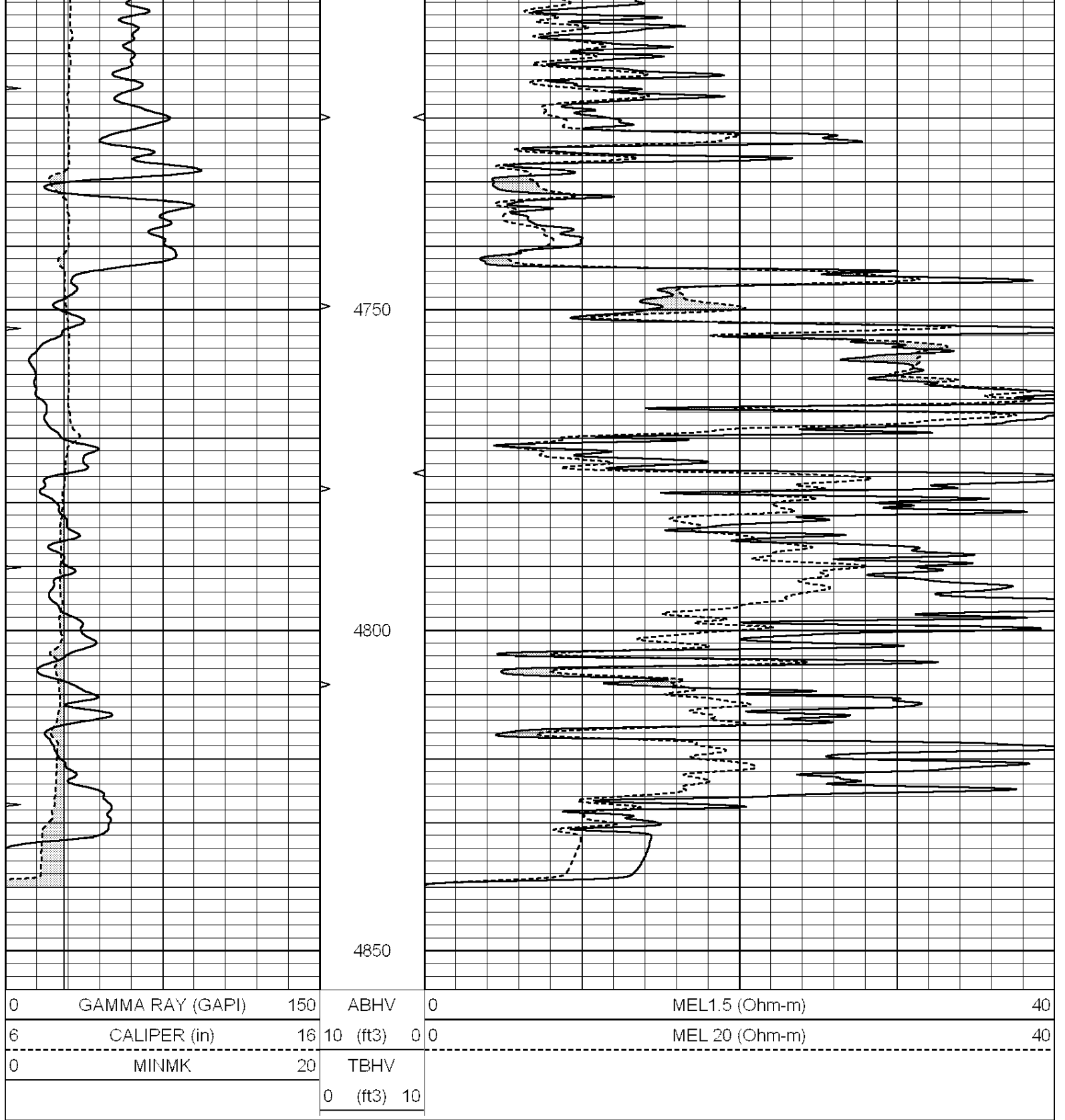


# REPEAT SECTION

Database File: 3970ddn.db  
 Dataset Pathname: pass5.2  
 Presentation Format: micro  
 Dataset Creation: Tue Oct 08 07:20:00 2019 by Calc SOC 120430  
 Charted by: Depth in Feet scaled 1:240

0	GAMMA RAY (GAPI)	150	ABHV	0	MEL1.5 (Ohm-m)	40
6	CALIPER (in)	16	10 (ft3)	0 0	MEL 20 (Ohm-m)	40
0	MINMK	20	TBHV			
			0 (ft3)	10		





Calibration Report

Database File: 3970ddn.db  
 Dataset Pathname: pass6.1  
 Dataset Creation: Tue Oct 08 07:51:44 2019 by Calc SOC 120430

MICRO Calibration Report

Serial Number: 070912  
 Tool Model: ProbeN  
 Performed: Fri Sep 13 10:25:31 2019

Caliper Calibration: Gain=4.120      Offset=-0.540

References	Low Cal 7.700	High Cal 18.000
Readings	2.000	4.500
1.5" Calibration:	Gain=30.000	Offset=0.000
References	Low Cal 0.000	High Cal 20.000
Readings	0.002	1.239
2" Calibration:	Gain=50.000	Offset=0.000
References	Low Cal 0.000	High Cal 20.000
Readings	0.003	1.075
Gamma Ray Calibration Report		
Serial Number:	070559	
Tool Model:	OPEN_GR	
Performed:	Fri Sep 06 03:11:30 2019	
Calibrator Value:	1.0	GAPI
Background Reading:	0.0	cps
Calibrator Reading:	1.0	cps
Sensitivity:	0.2500	GAPI/cps