



DUAL INDUCTION LOG

Company L.D. DRILLING, INC.
 Well #1-14 CLEM
 Field WILDCAT
 County SCOTT
 State KANSAS

Company L.D. DRILLING, INC.
 Well #1-14 CLEM
 Field WILDCAT
 County SCOTT State KANSAS

Location: API # : 15-171-21260-0000
 595' FSL & 730' FEL
 NE - SW - SE - SE
 SEC 14 TWP 16S RGE 33W
 Permanent Datum GROUND LEVEL Elevation 2996
 Log Measured From KELLY BUSHING 5' A.G.L.
 Drilling Measured From KELLY BUSHING
 Other Services
 CDL/CNL
 MEL/SON
 Elevation
 K.B. 3001
 D.F. 2999
 G.L. 2996

Date	10/8/79
Run Number	ONE
Depth Driller	4850
Depth Logger	4848
Bottom Logged Interval	4846
Top Log Interval	00
Casing Driller	8 5/8"@261'
Casing Logger	261
Bit Size	7 7/8"
Type Fluid in Hole	CHEMICAL MUD
Density / Viscosity	9.4/55
pH / Fluid Loss	11.0/8.8
Source of Sample	FLOWLINE
Rim @ Meas. Temp	.540@79F
Rmf @ Meas. Temp	.405@79F
Rmc @ Meas. Temp	.648@79F
Source of Rmf / Rmc	MEASUREMENT
Rim @ BHT	.340@124F
Time Circulation Stopped	2 HOURS
Time Logger on Bottom	4:30 A.M.
Maximum Recorded Temperature	124F
Equipment Number	922339
Location	HAYS, KANSAS
Recorded By	JEFF LUEBBERS
Witnessed By	KIM SHOEMAKER

<<< Fold Here >>>

All interpretations are opinions based on inferences from electrical or other measurements and we cannot and do not guarantee the accuracy or correctness of any interpretation, and we shall not, except in the case of gross or willful negligence on our part, be liable or responsible for any loss, costs, damages, or expenses incurred or sustained by anyone resulting from any interpretation made by any of our officers, agents or employees. These interpretations are also subject to our general terms and conditions set out in our current Price Schedule.

Comments

THANK YOU FOR USING ELI WIRELINE HAYS, KANSAS (785) 628-6395
 DIRECTIONS
 (SCOTT COUNTY LAKE & PENCE BLKTOP) 1W., N. INTO



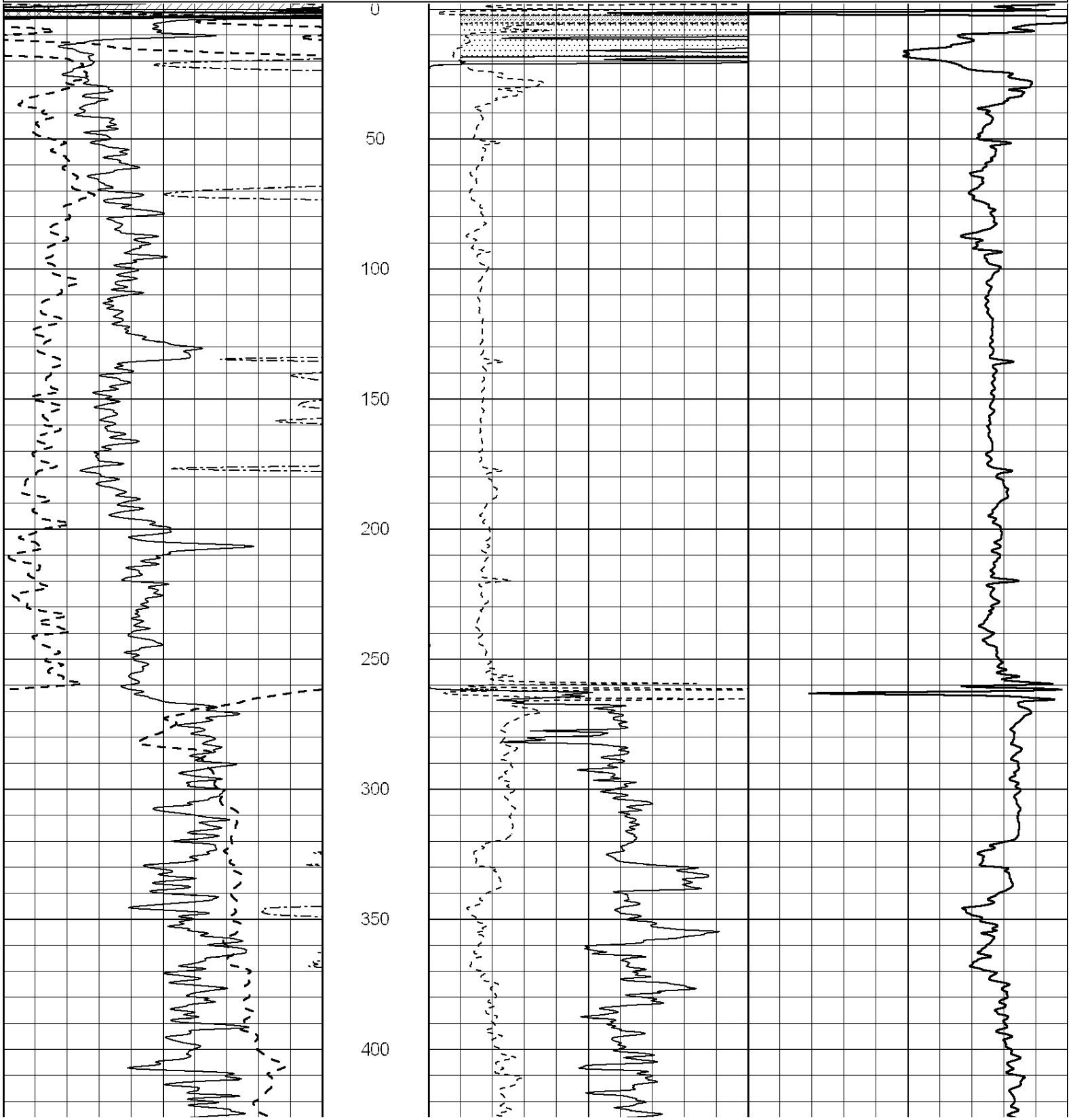
MAIN SECTION

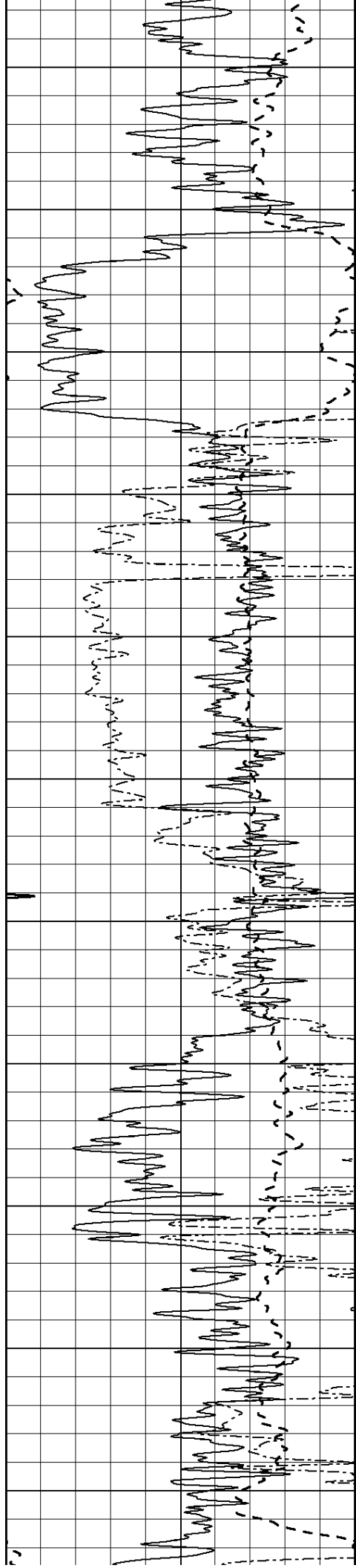
Database File: 3970ddn.db
 Dataset Pathname: pass3.1M
 Presentation Format: dil2
 Dataset Creation: Tue Oct 08 06:04:32 2019
 Charted by: Depth in Feet scaled 1:600

0	Gamma Ray (GAPI)	150
-100	SP (mV)	100
0	RWA (Ohm-m)	1

0	RLL3 (Ohm-m)	50
0	RILD (Ohm-m)	50
1000	CILD (mmho/m)	0

50	RILD X10 (Ohm-m)	500
50	RLL3 X10 (Ohm-m)	500





450

500

550

600

650

700

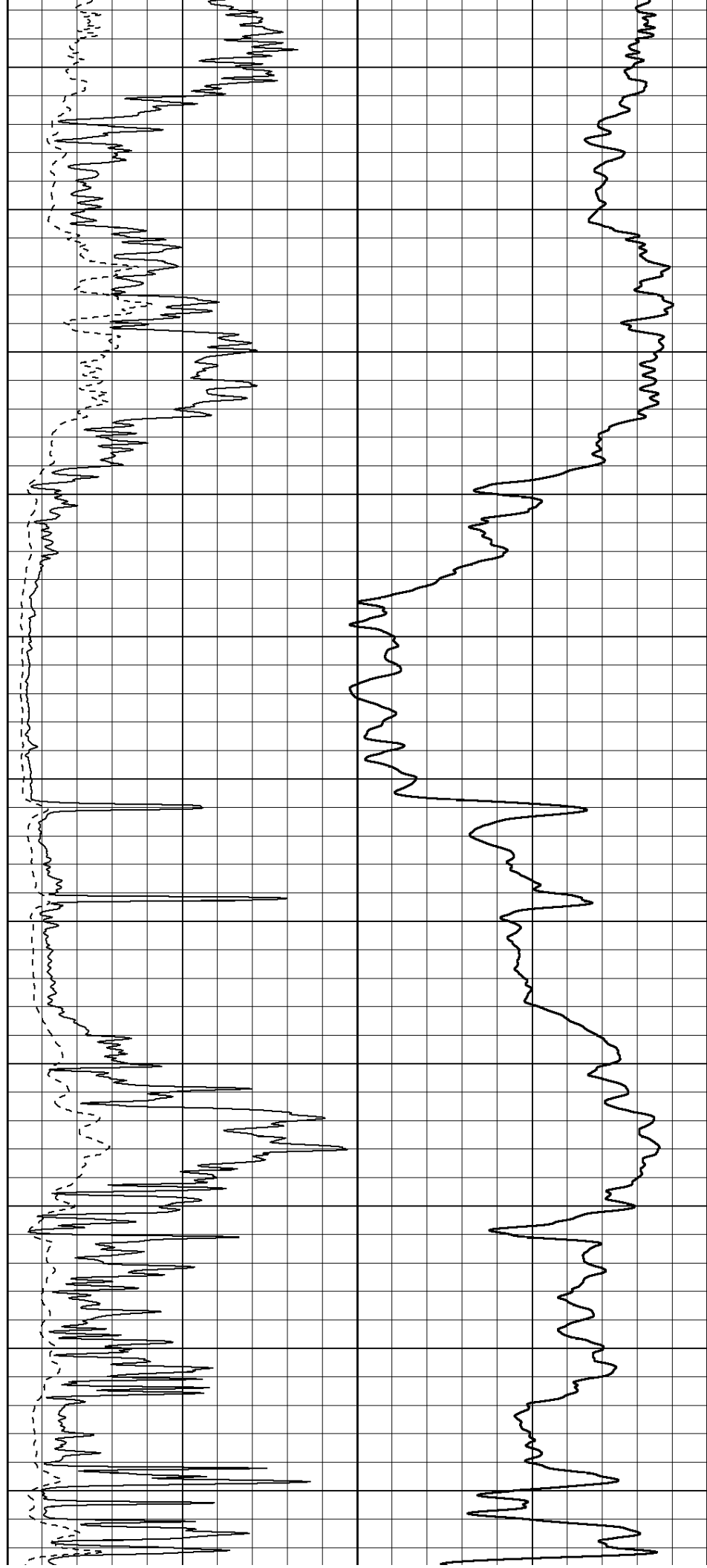
750

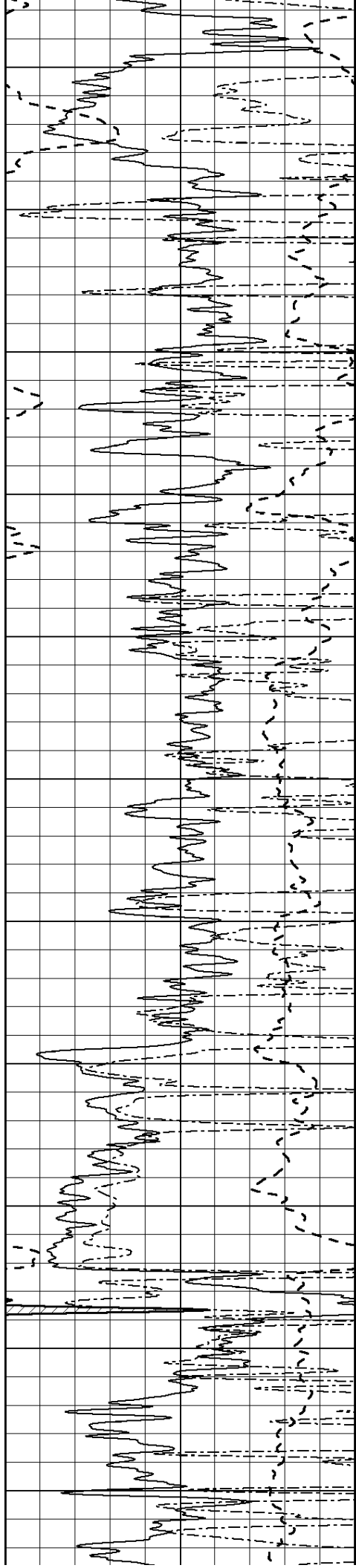
800

850

900

950





1000

1050

1100

1150

1200

1250

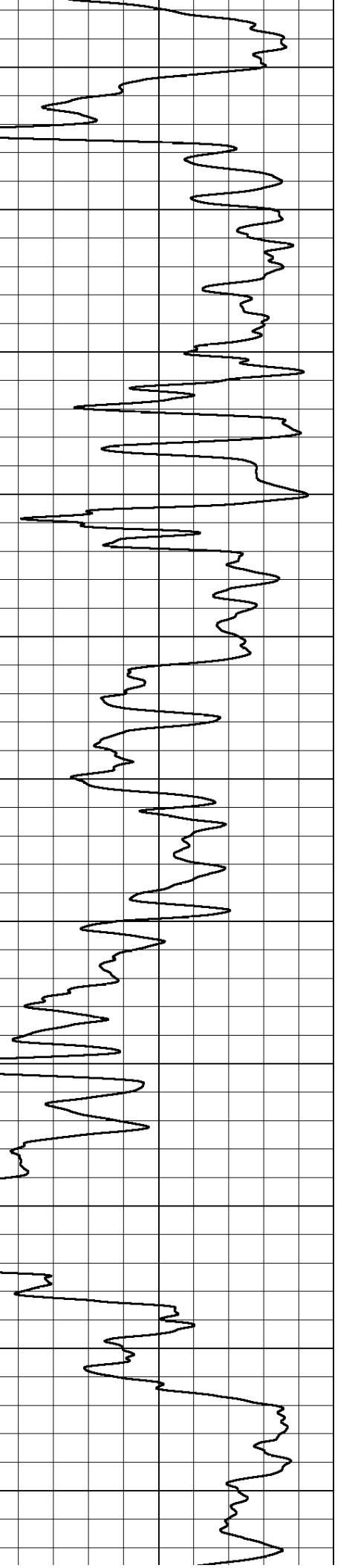
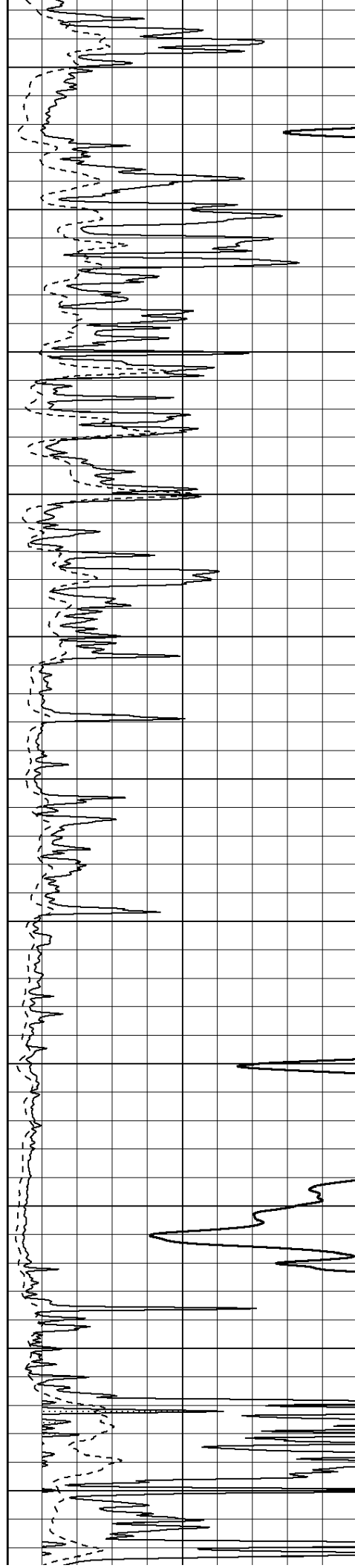
1300

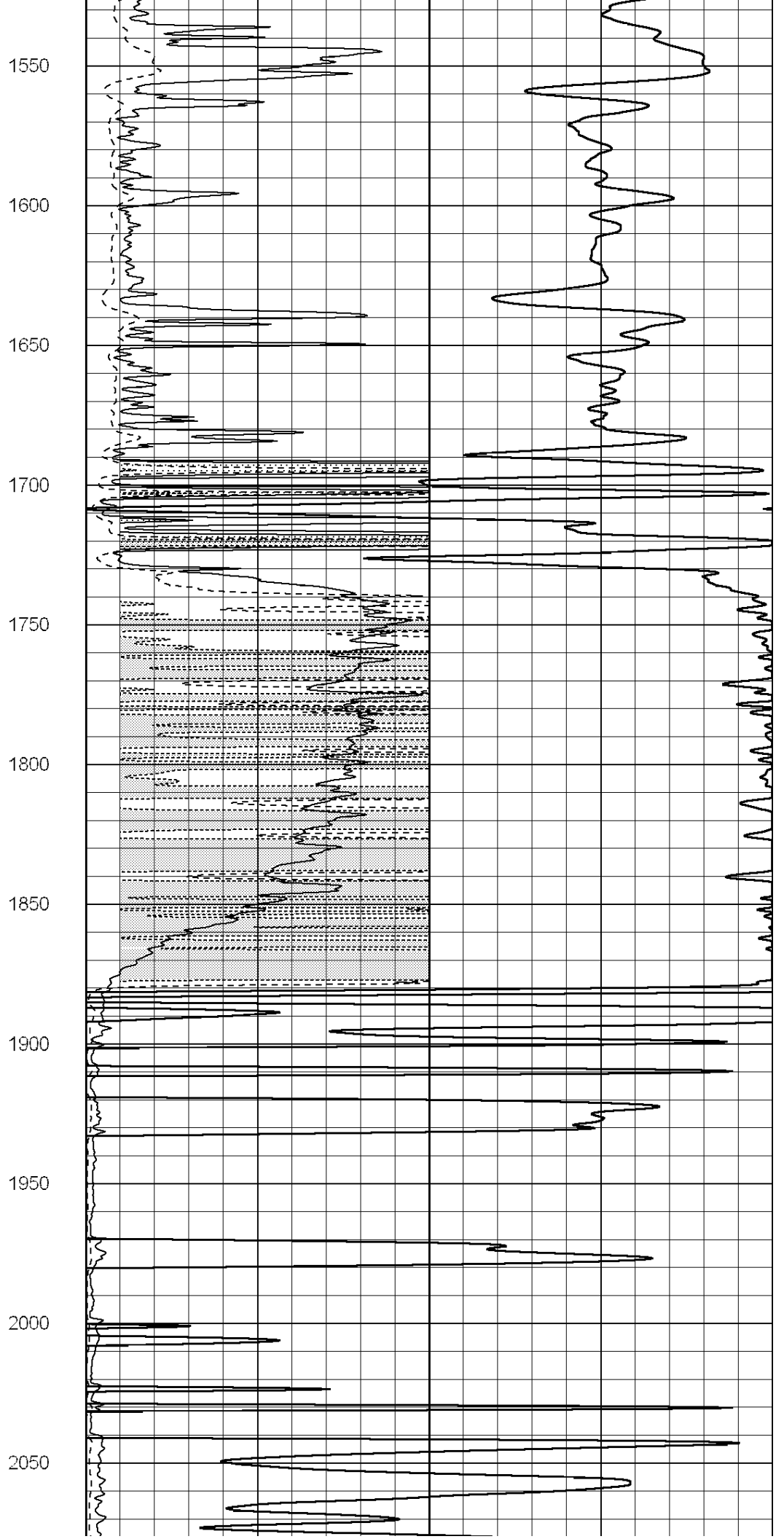
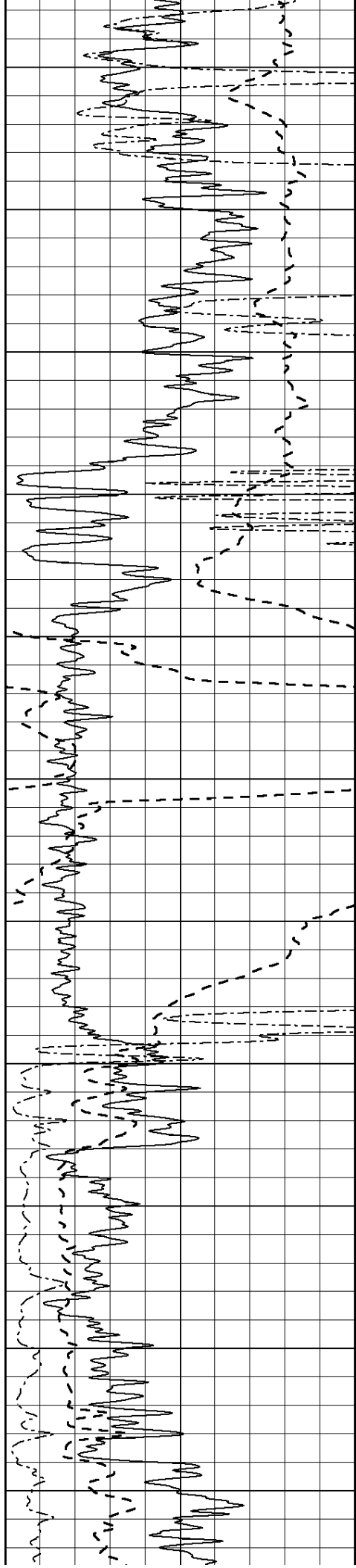
1350

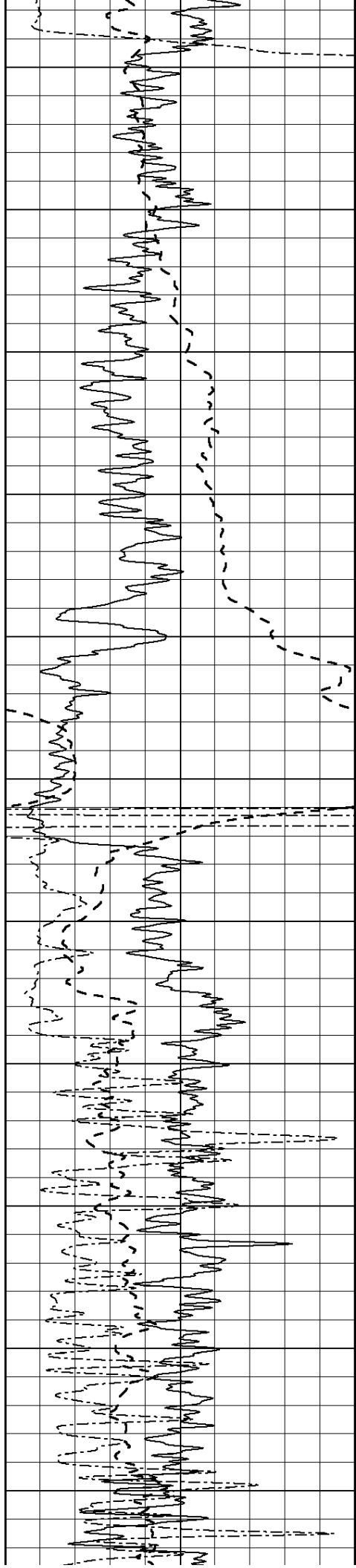
1400

1450

1500







2100

2150

2200

2250

2300

2350

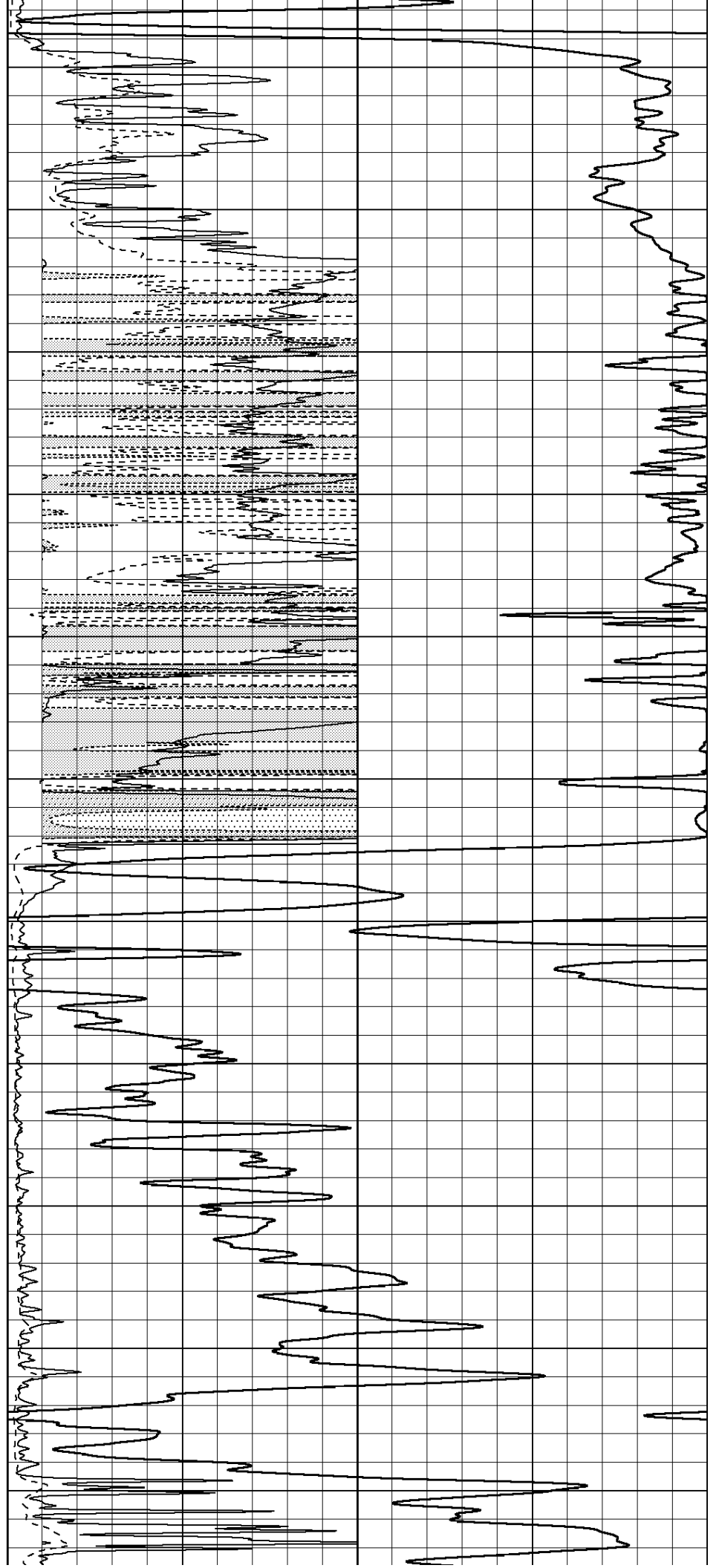
2400

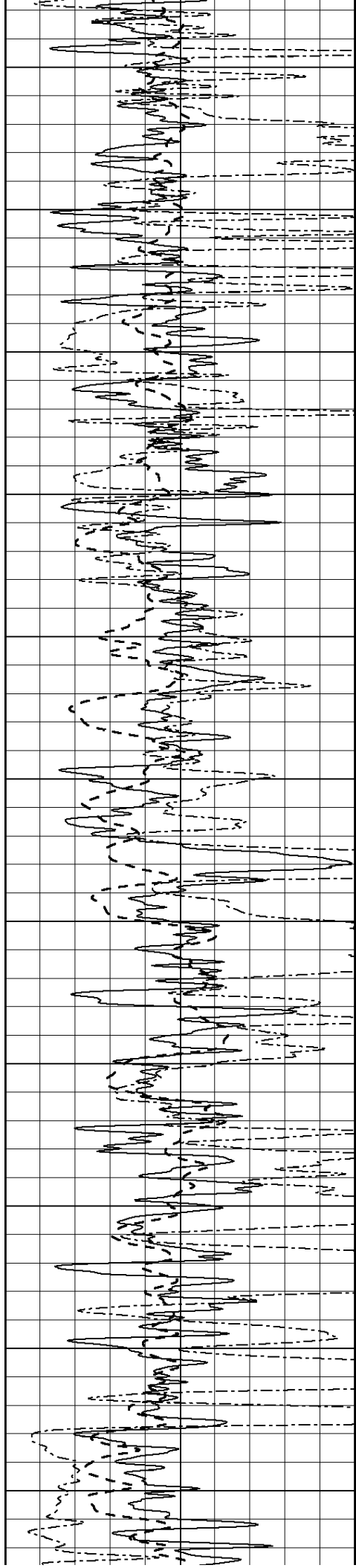
2450

2500

2550

2600





2650

2700

2750

2800

2850

2900

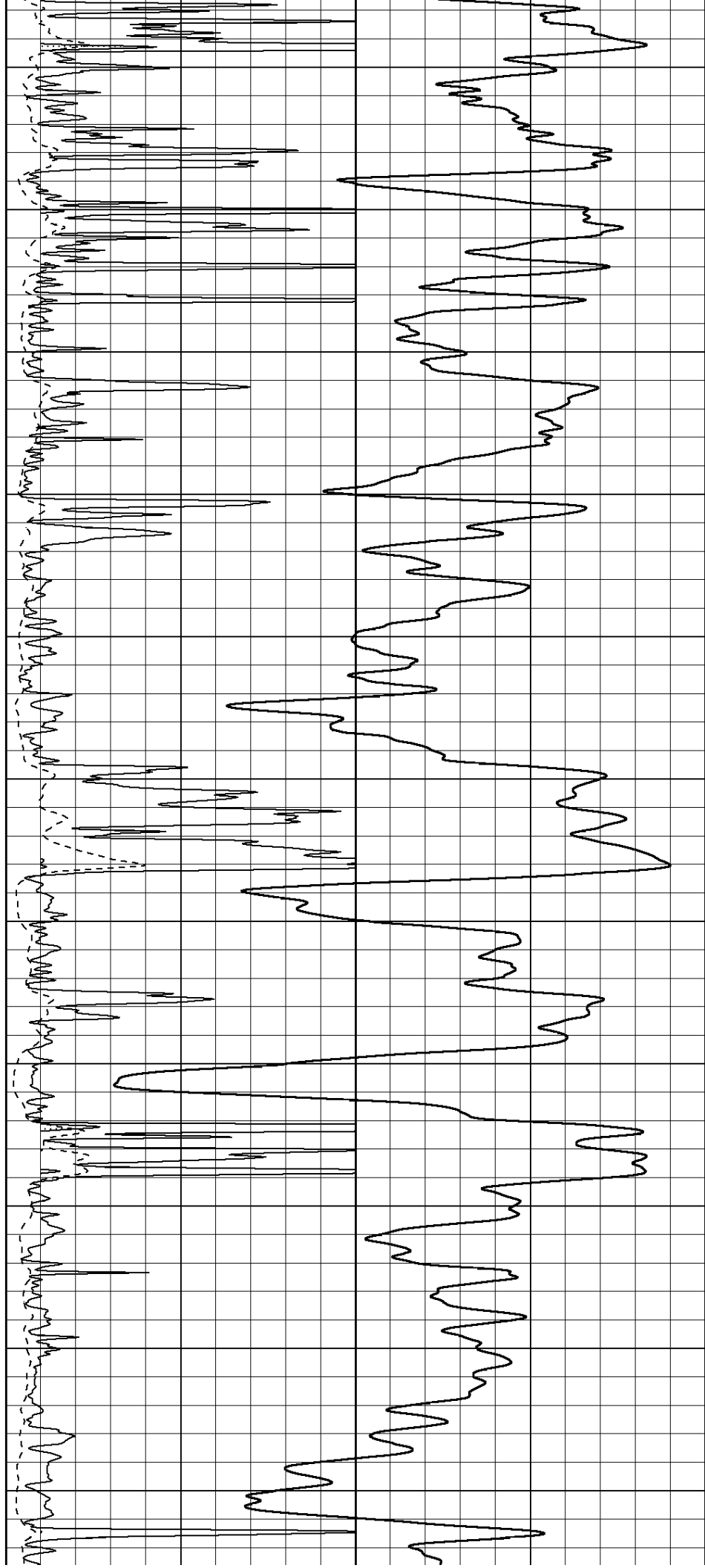
2950

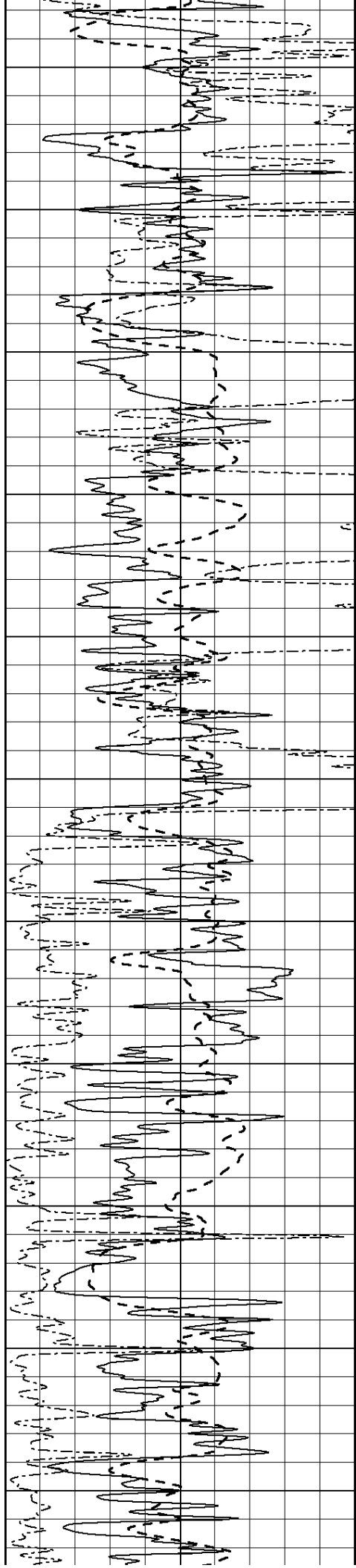
3000

3050

3100

3150





3200

3250

3300

3350

3400

3450

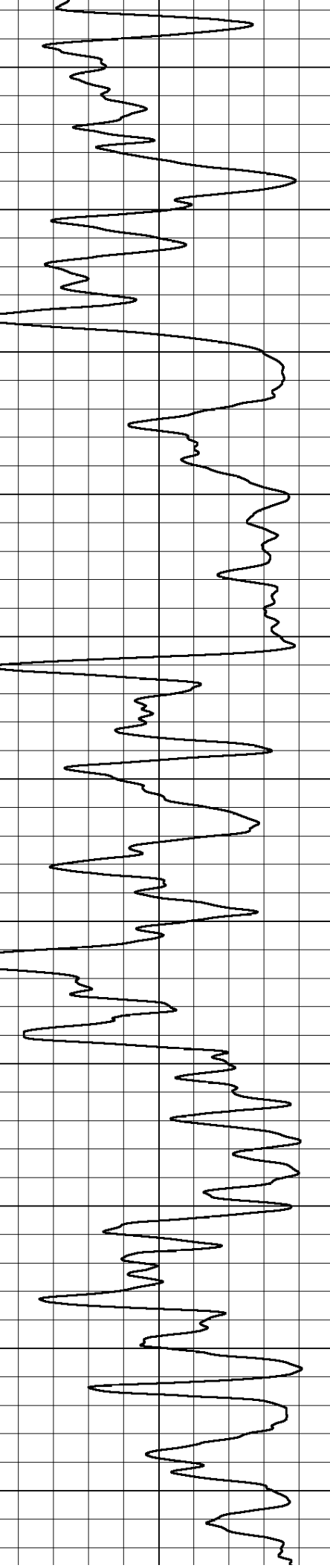
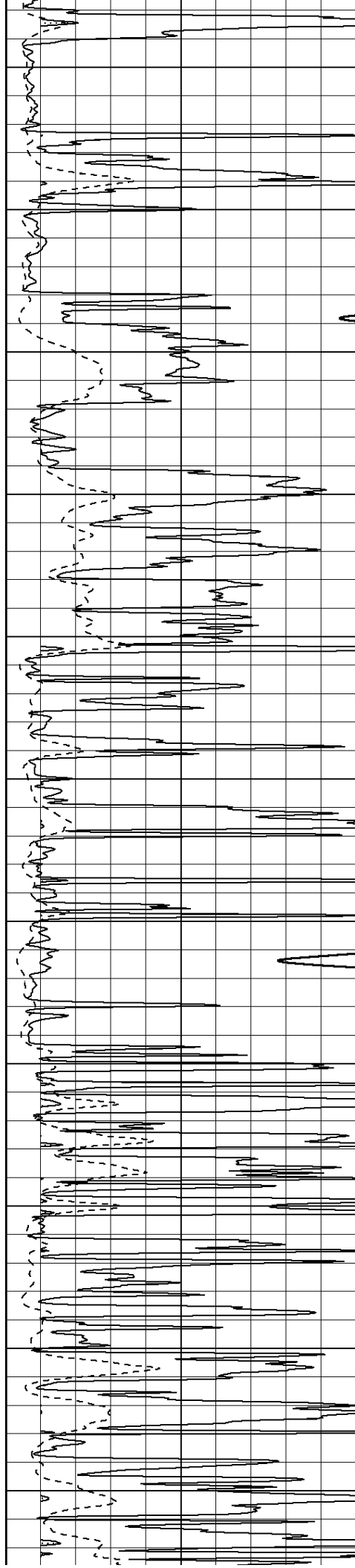
3500

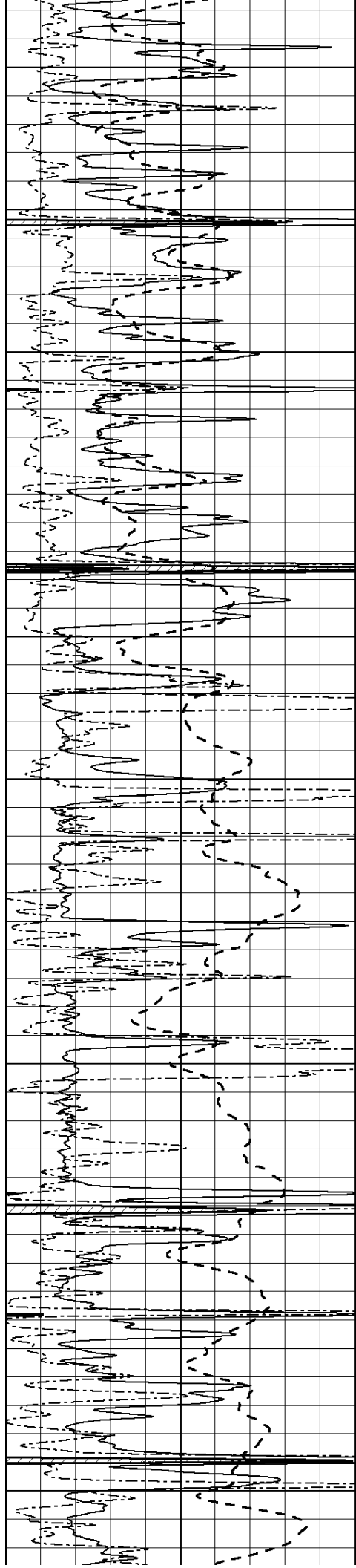
3550

3600

3650

3700





3750

3800

3850

3900

3950

4000

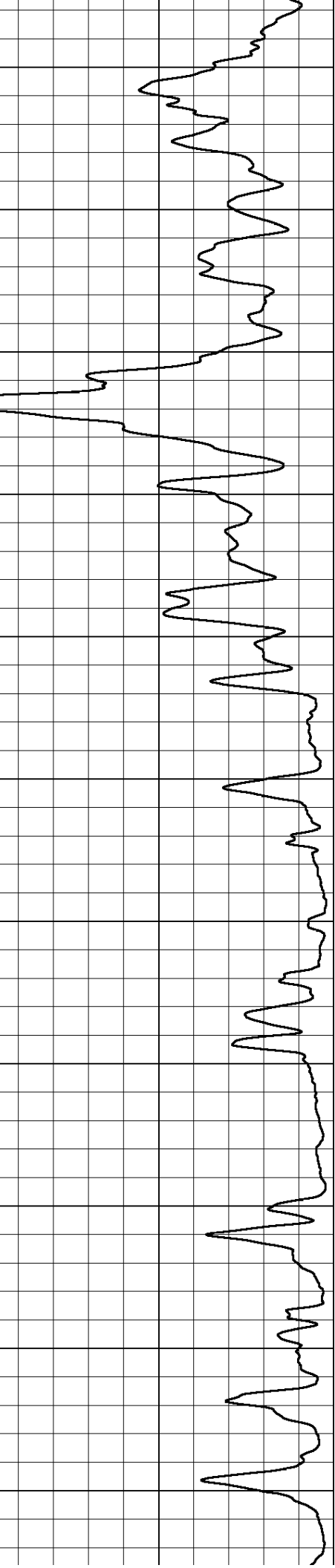
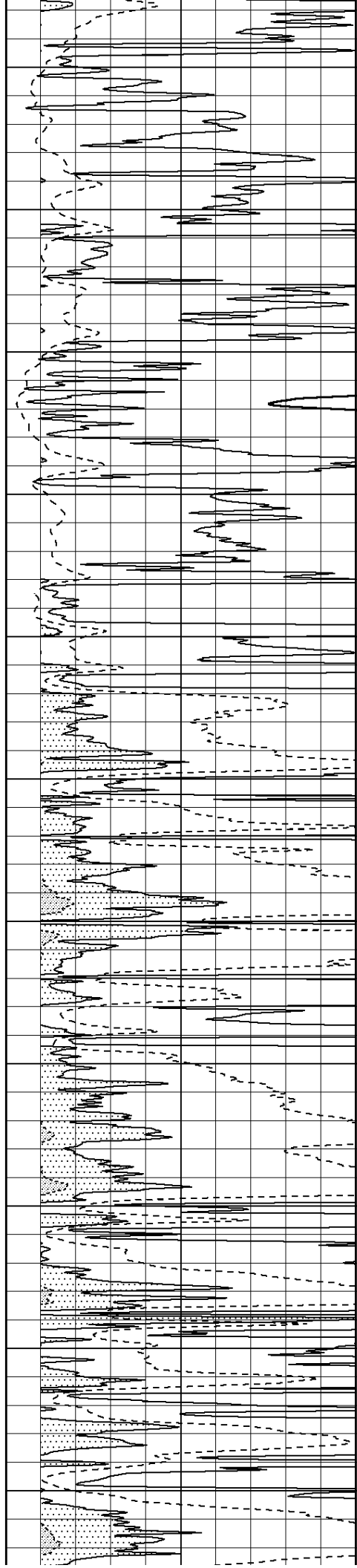
4050

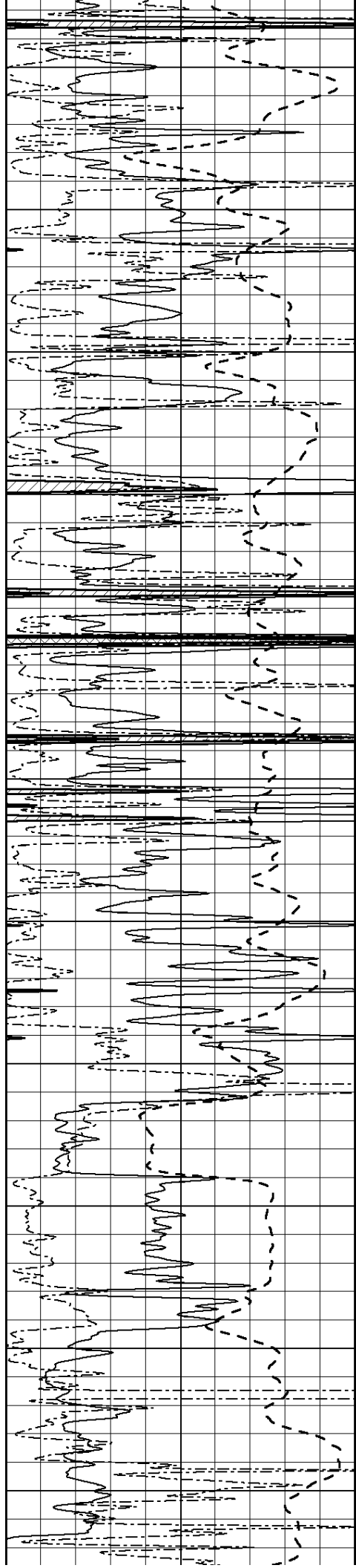
4100

4150

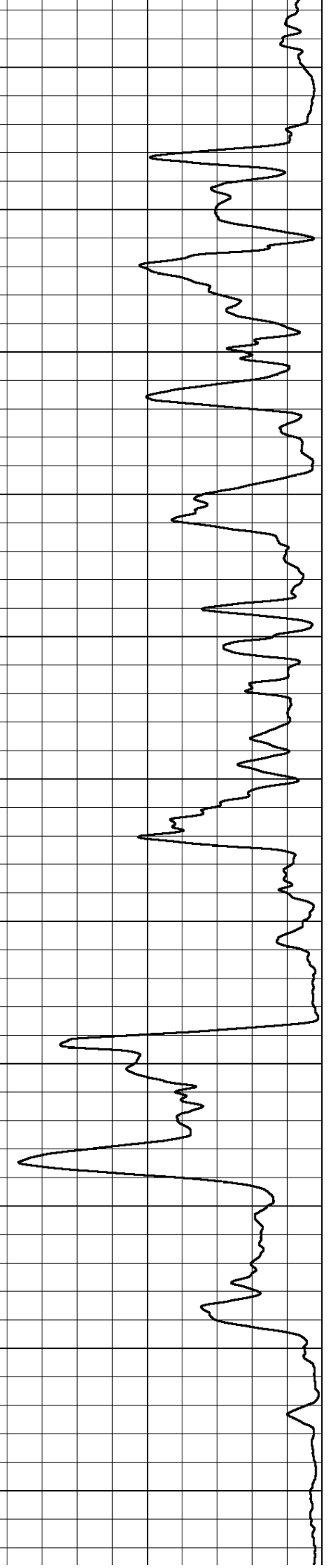
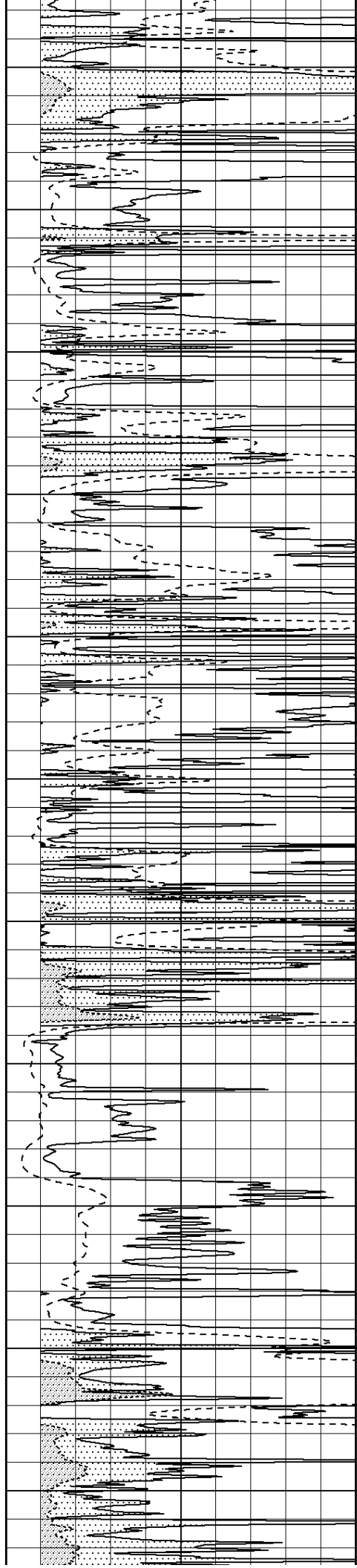
4200

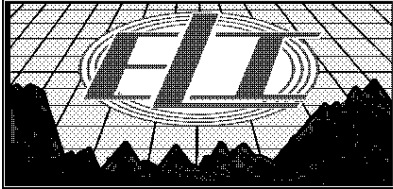
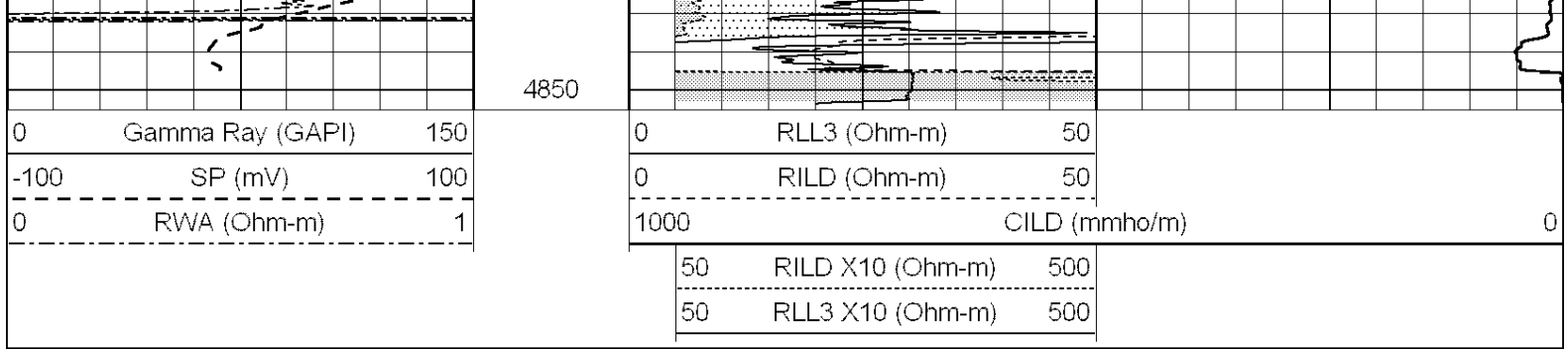
4250





4300
4350
4400
4450
4500
4550
4600
4650
4700
4750
4800

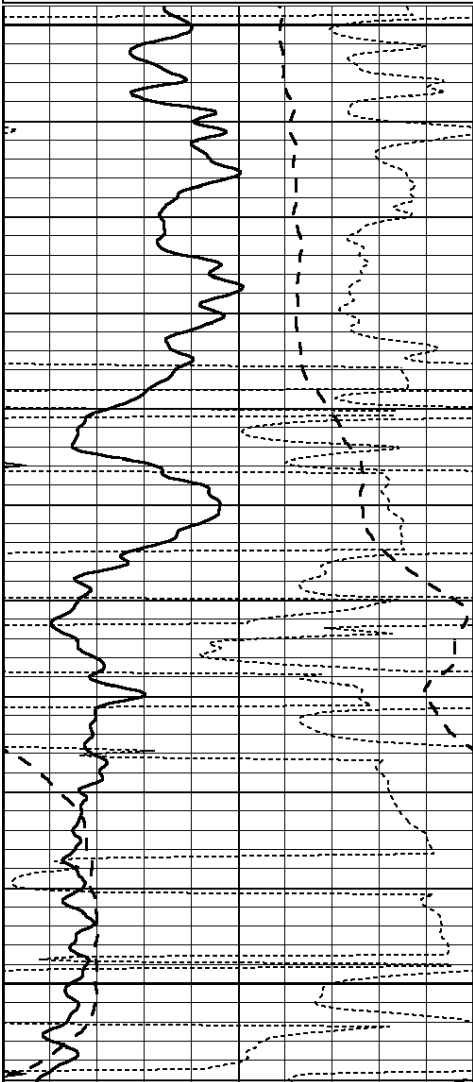




ANHYDRITE

Database File: 3970ddn.db
 Dataset Pathname: pass3.1A
 Presentation Format: _dil
 Dataset Creation: Tue Oct 08 06:05:08 2019
 Charted by: Depth in Feet scaled 1:240

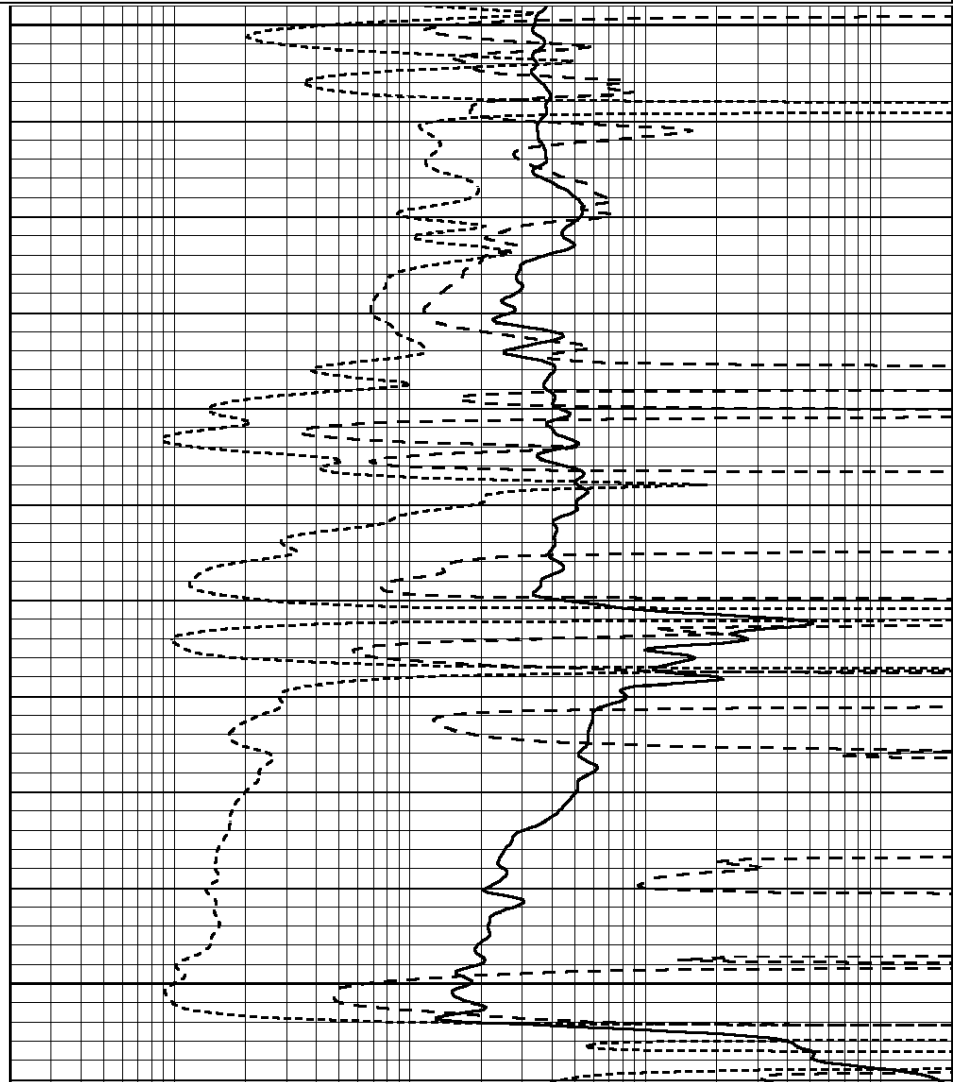
0	GAMMA RAY (GAPI)	150	0.2	SHALLOW GUARD (Ohm-m)	2000
-100	SP (mV)	100	0.2	DEEP INDUCTION (Ohm-m)	2000
-250	Rxo/Rt	50	0.2	MEDIUM INDUCTION (Ohm-m)	2000
0	MINMK	20			

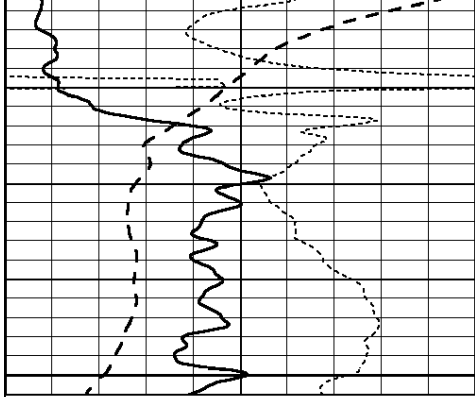


2250

2300

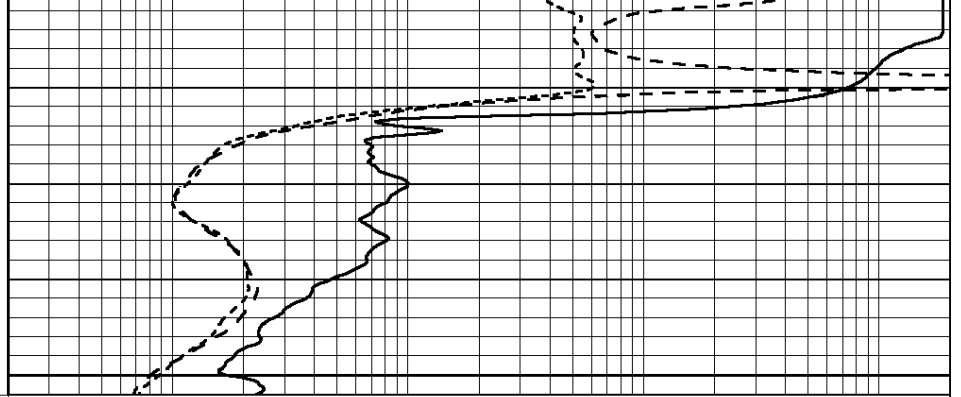
2350



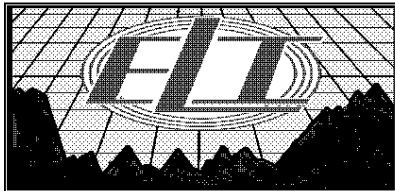


2400

0	GAMMA RAY (GAPI)	150
-100	SP (mV)	100
-250	Rxo/Rt	50
0	MINMK	20



0.2	SHALLOW GUARD (Ohm-m)	2000
0.2	DEEP INDUCTION (Ohm-m)	2000
0.2	MEDIUM INDUCTION (Ohm-m)	2000

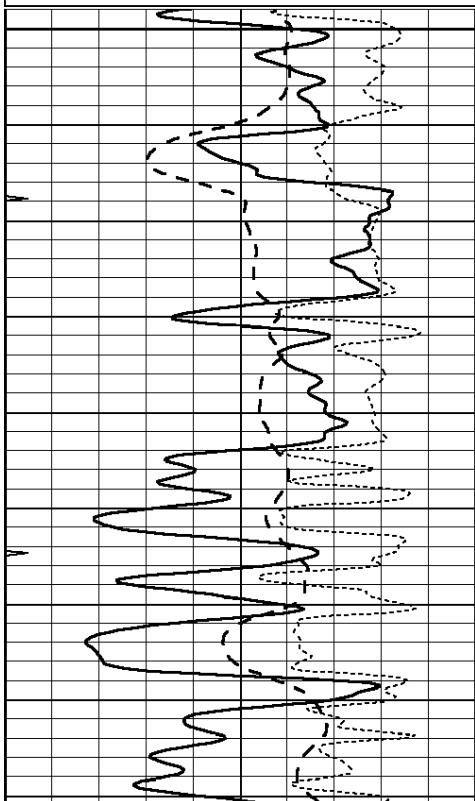


MAIN SECTION

Database File: 3970ddn.db
 Dataset Pathname: pass3.1M
 Presentation Format: _dil
 Dataset Creation: Tue Oct 08 06:04:32 2019
 Charted by: Depth in Feet scaled 1:240

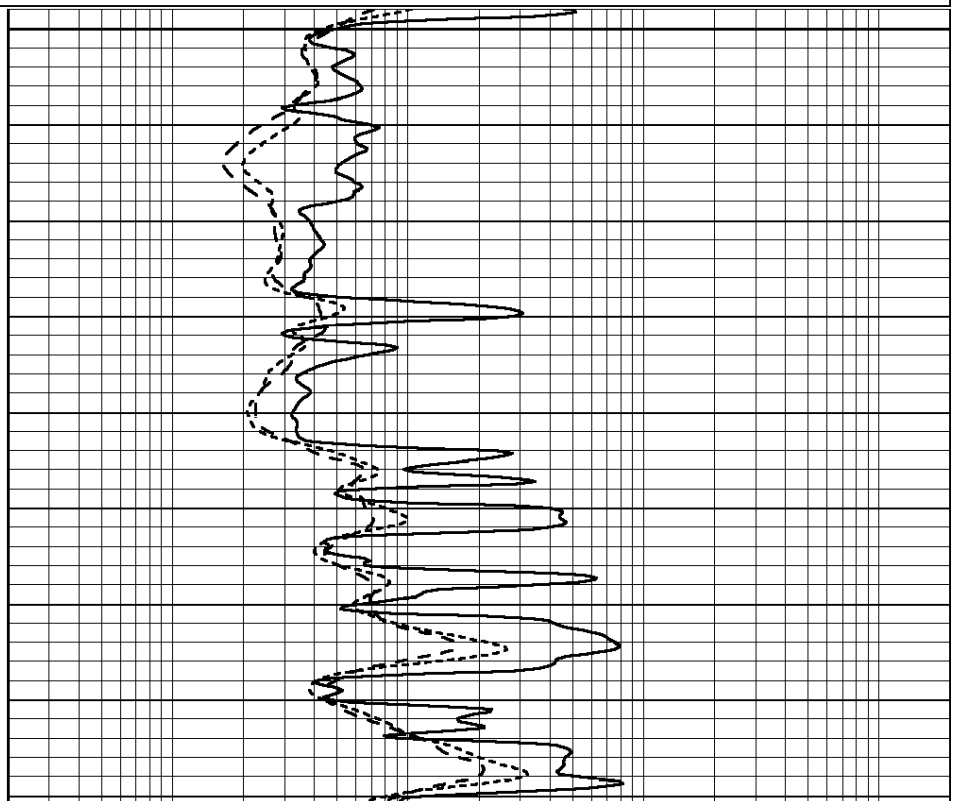
0	GAMMA RAY (GAPI)	150
-100	SP (mV)	100
-250	Rxo/Rt	50
0	MINMK	20

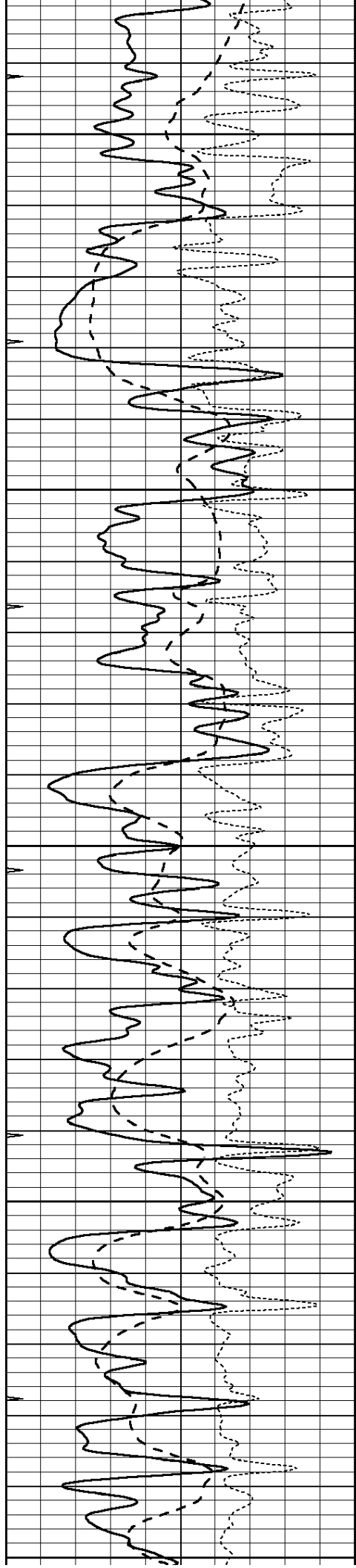
0.2	SHALLOW GUARD (Ohm-m)	2000
0.2	DEEP INDUCTION (Ohm-m)	2000
0.2	MEDIUM INDUCTION (Ohm-m)	2000



3500

3550





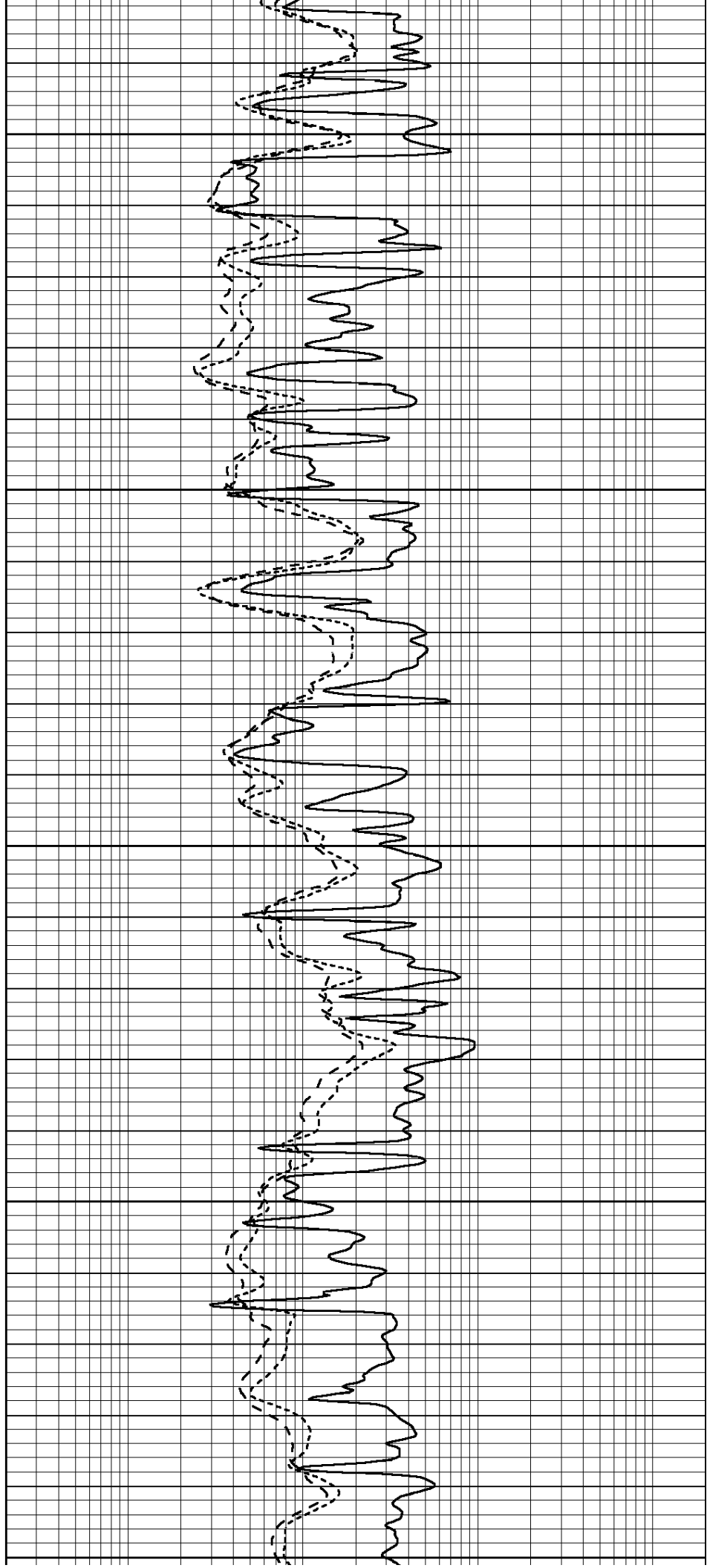
3600

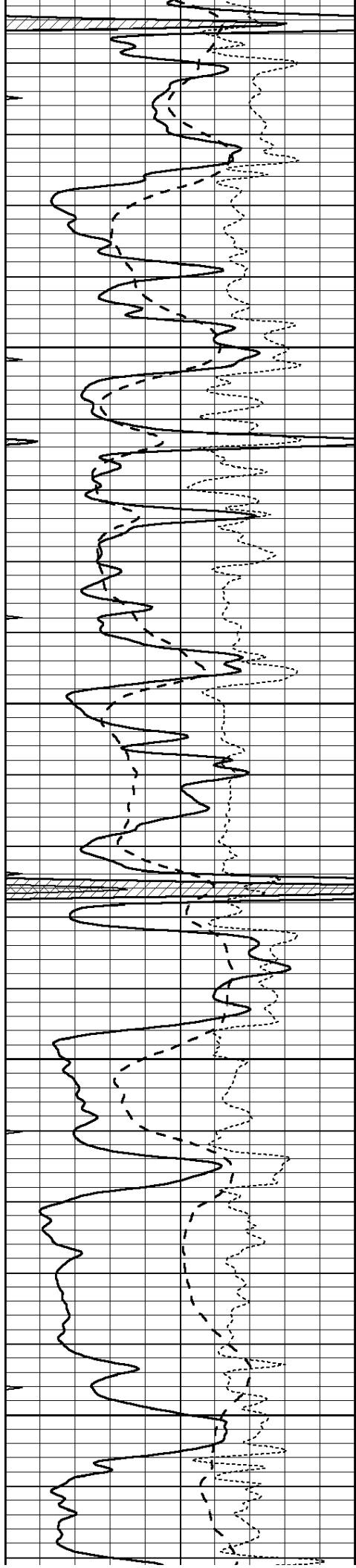
3650

3700

3750

3800



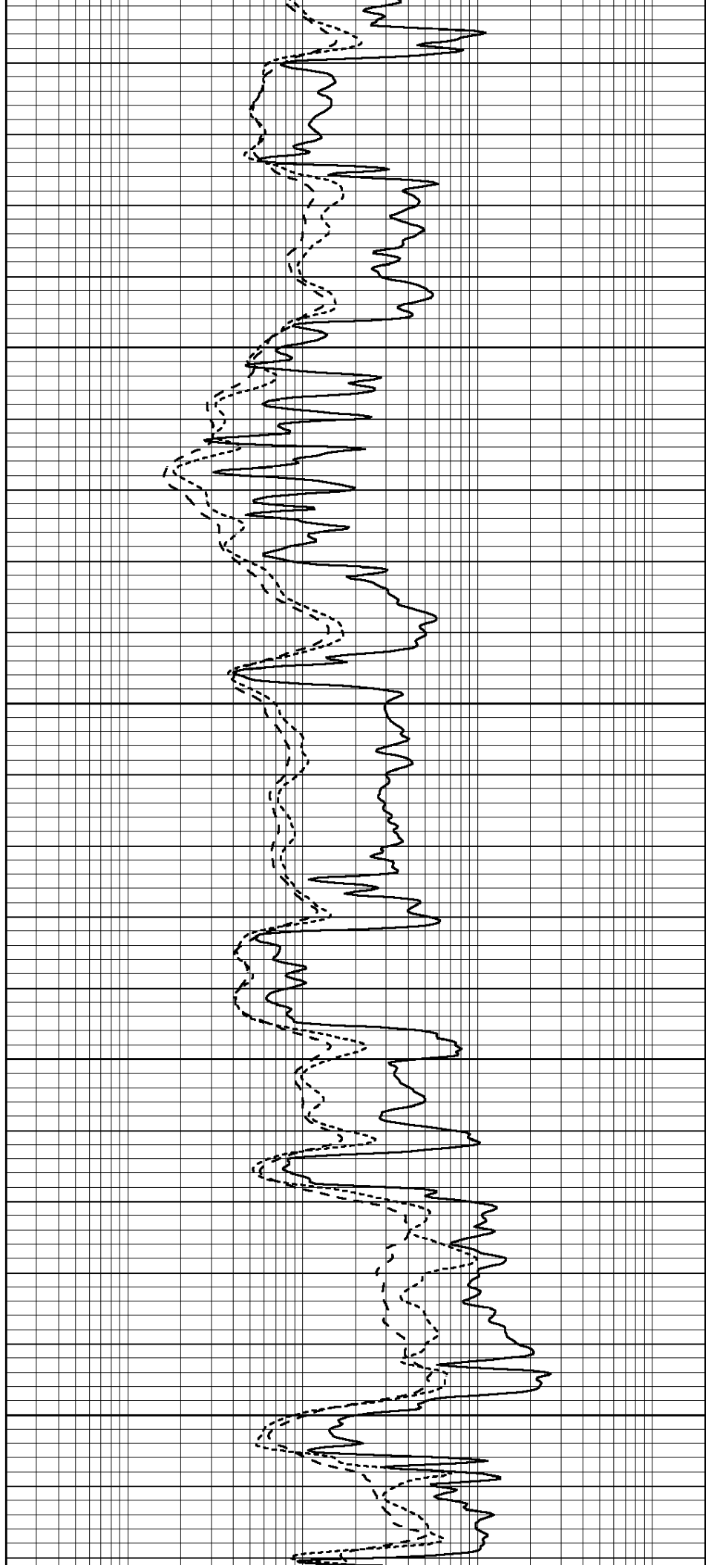


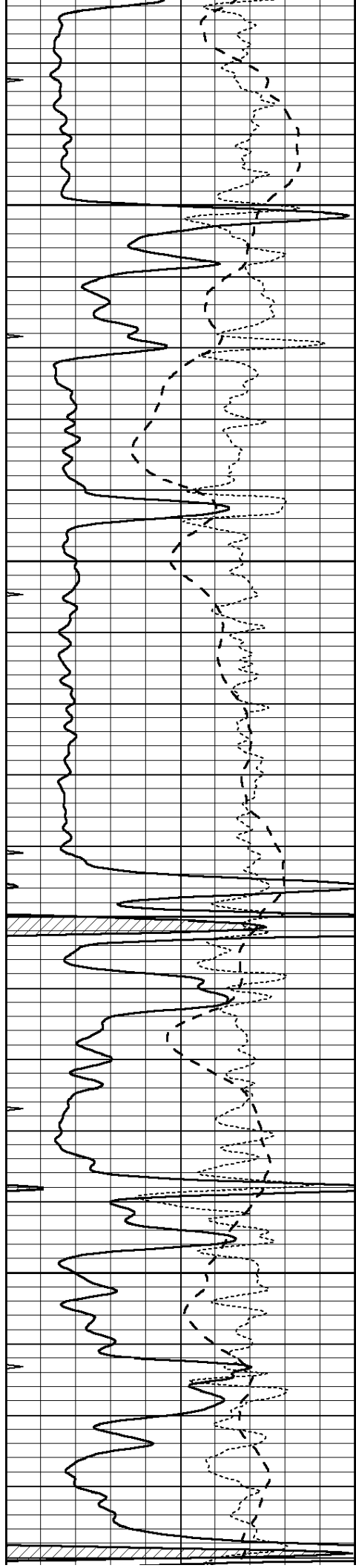
3850

3900

3950

4000



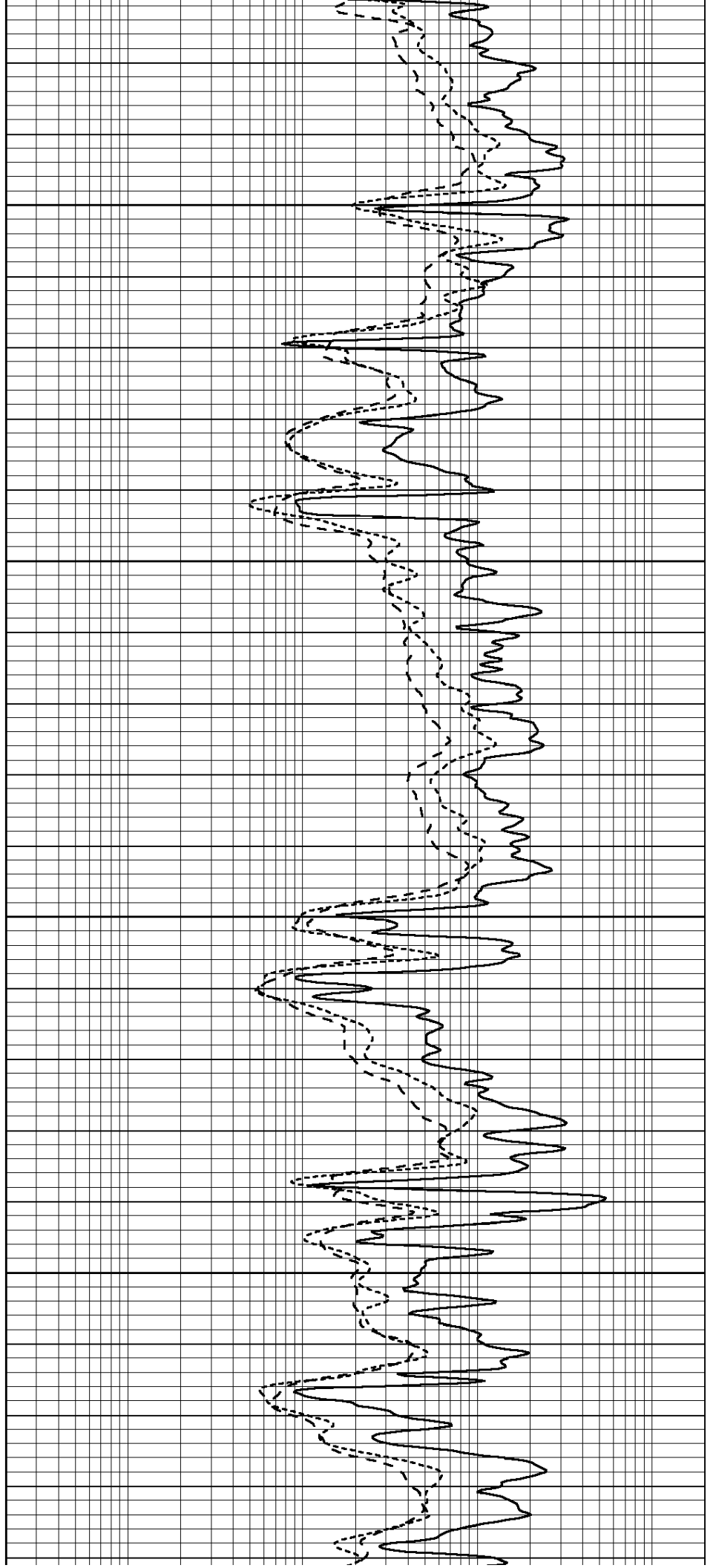


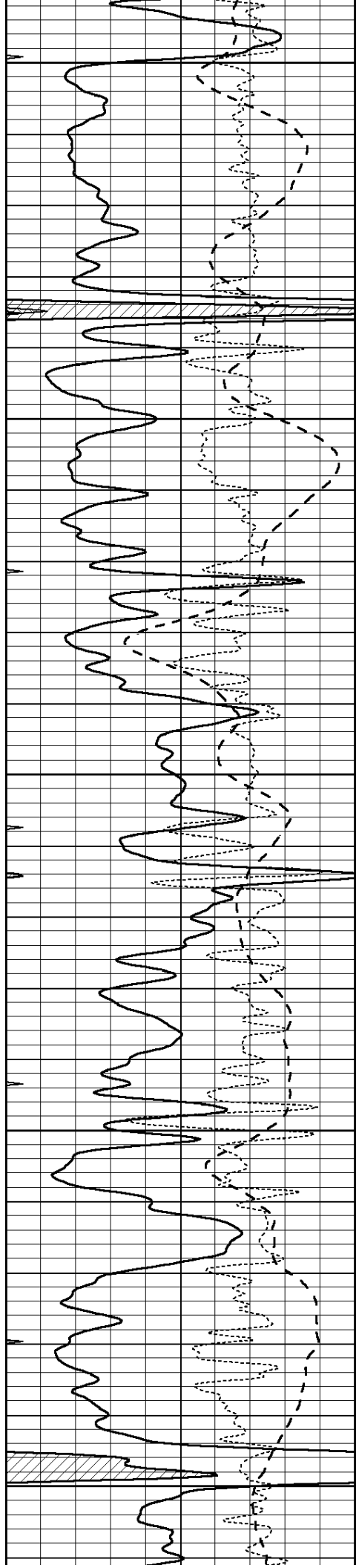
4050

4100

4150

4200





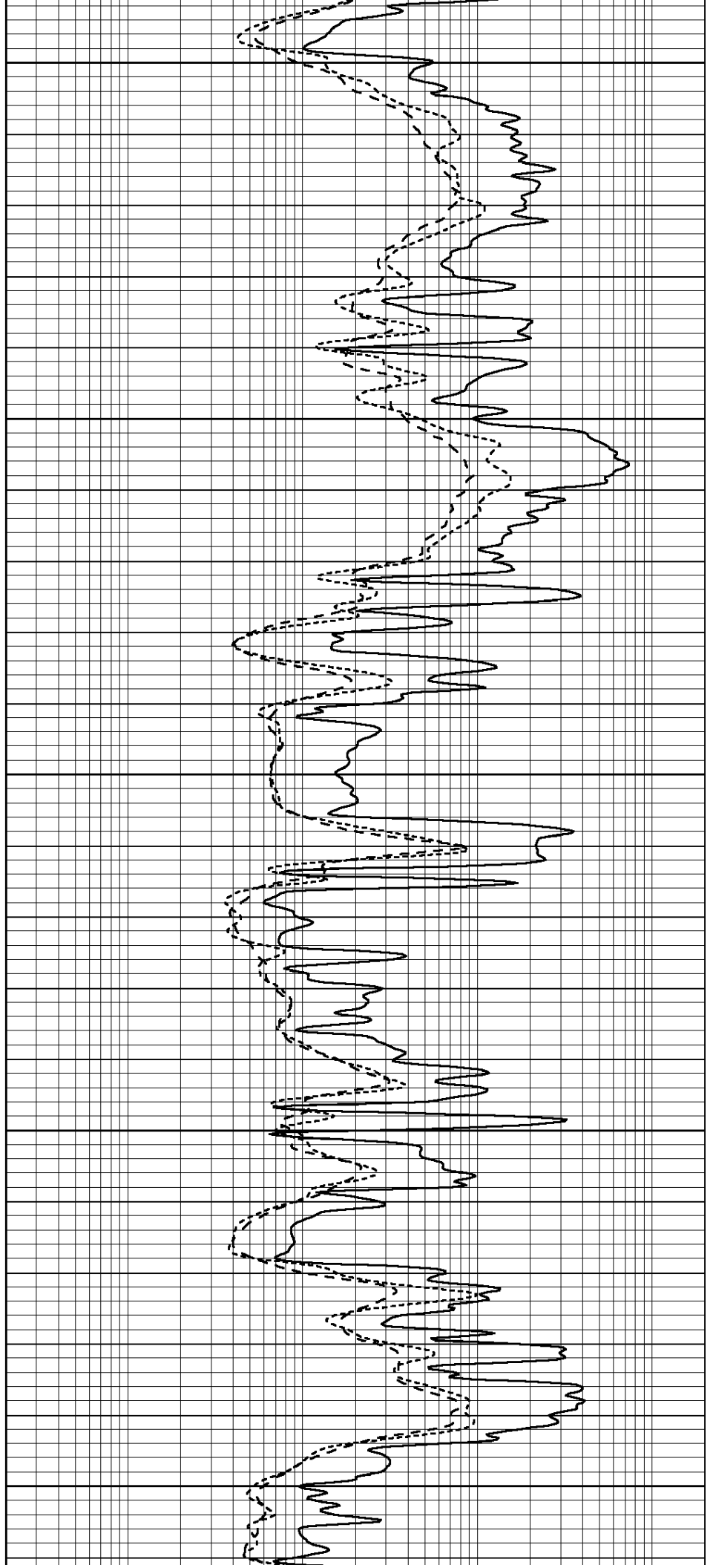
4250

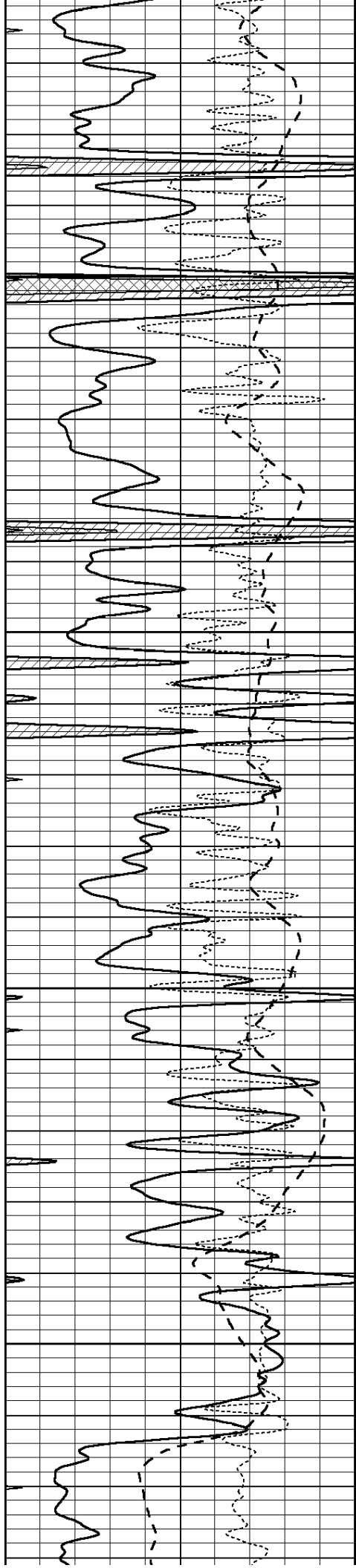
4300

4350

4400

4450



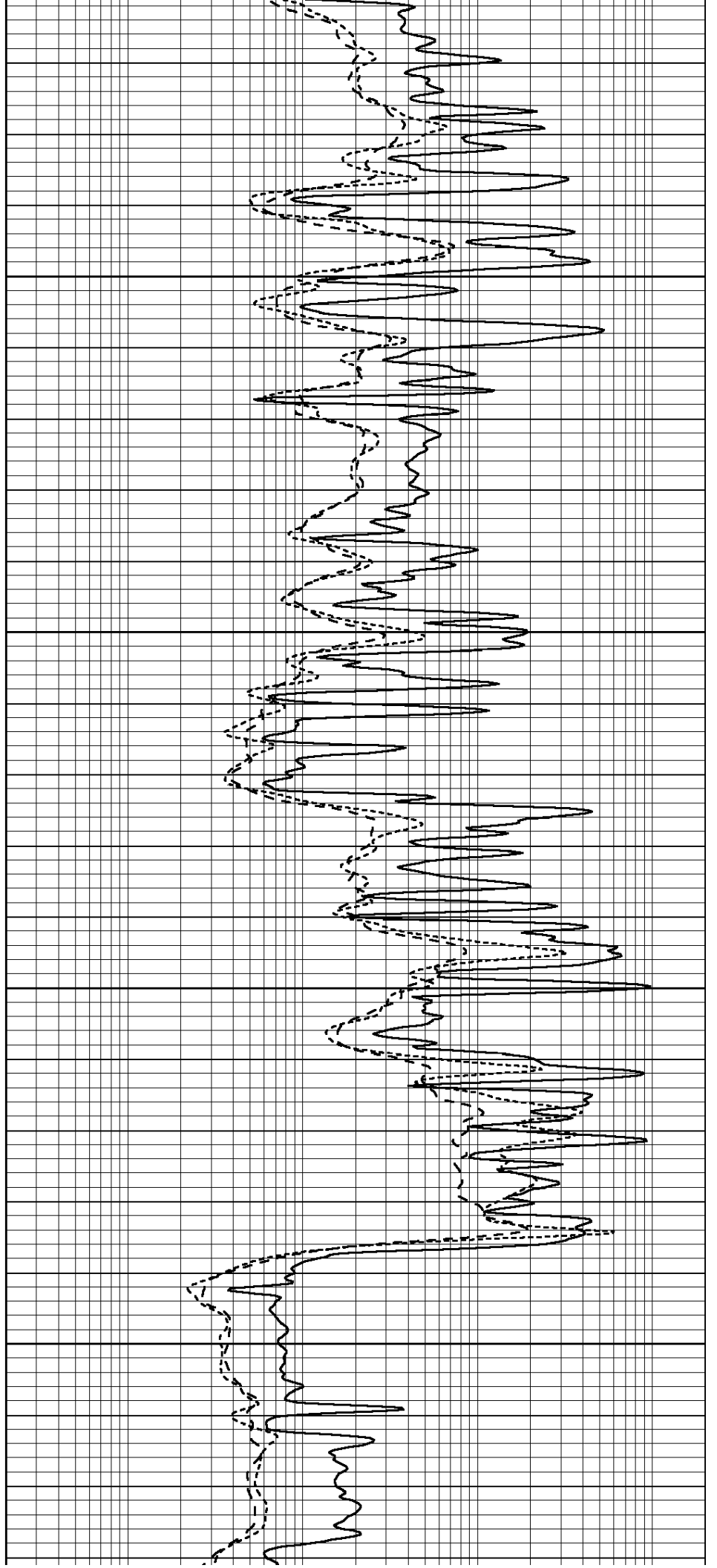


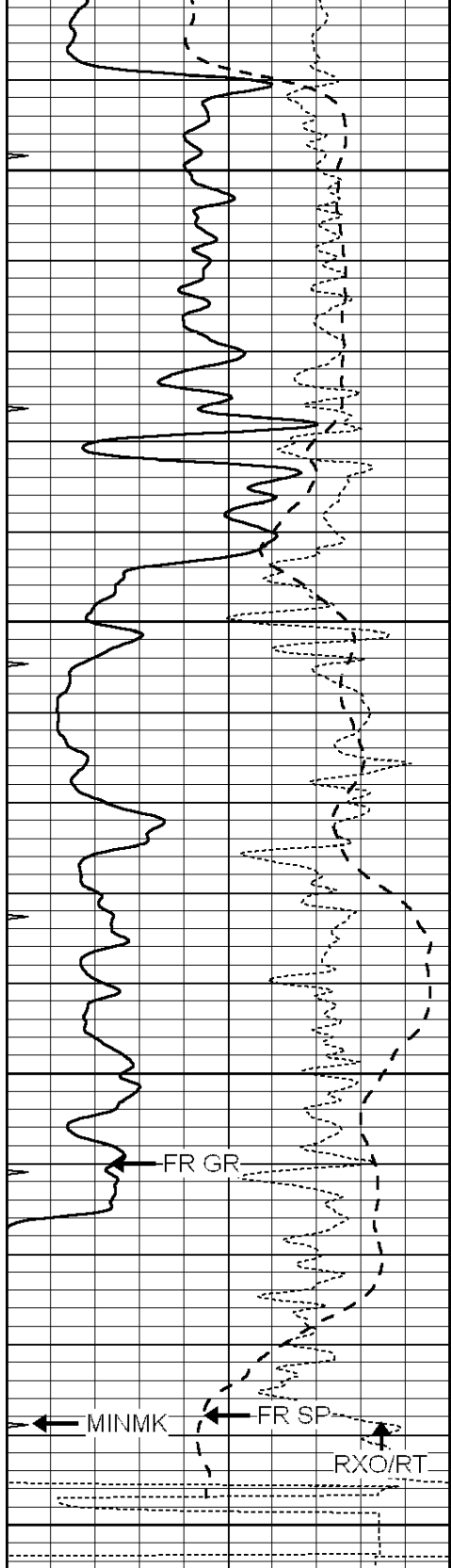
4500

4550

4600

4650



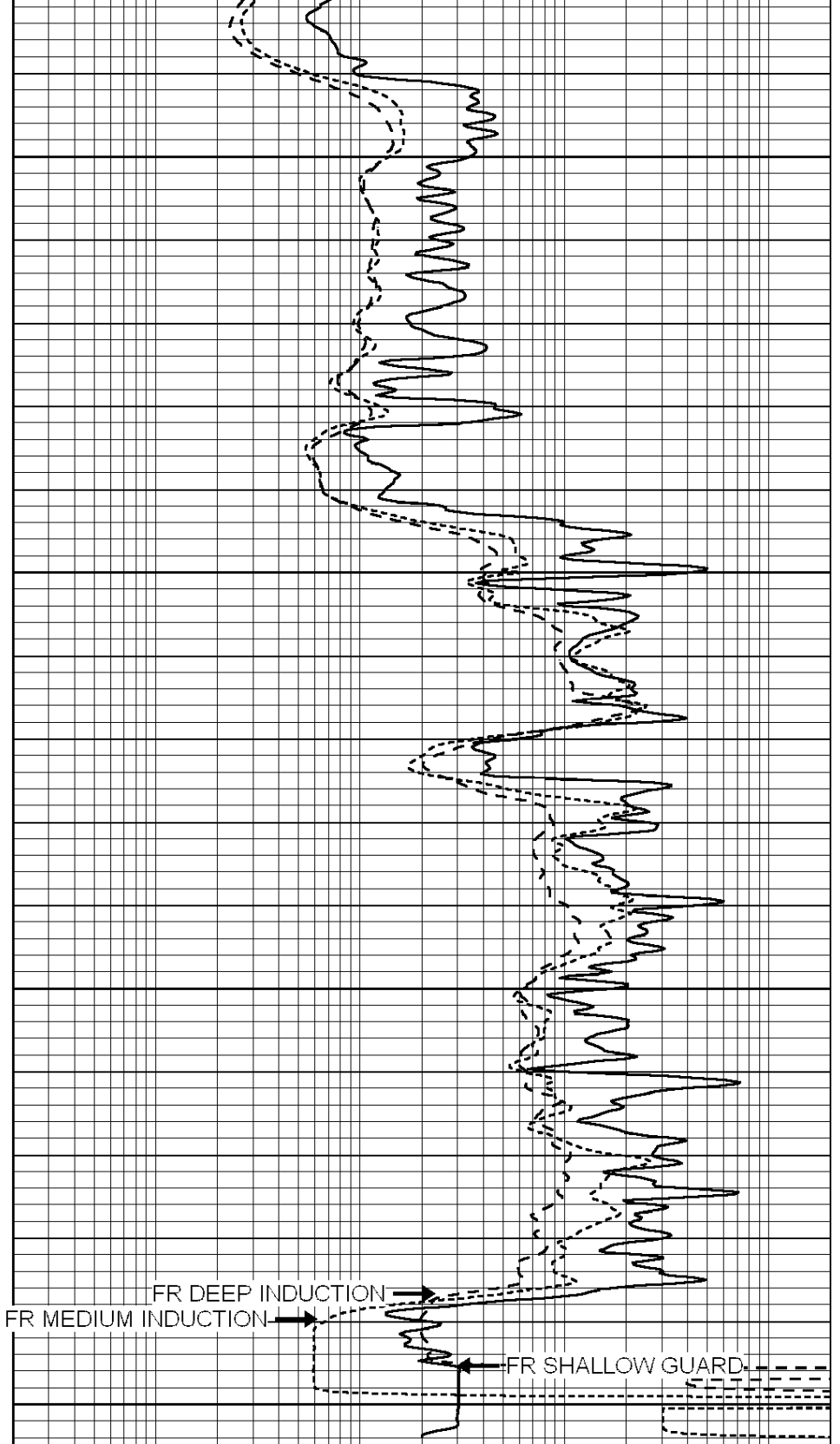


0	GAMMA RAY (GAPI)	150
-100	SP (mV)	100
-250	Rxo/Rt	50
0	MINMK	20

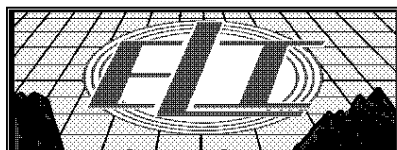
4700

4750

4800



0.2	SHALLOW GUARD (Ohm-m)	2000
0.2	DEEP INDUCTION (Ohm-m)	2000
0.2	MEDIUM INDUCTION (Ohm-m)	2000

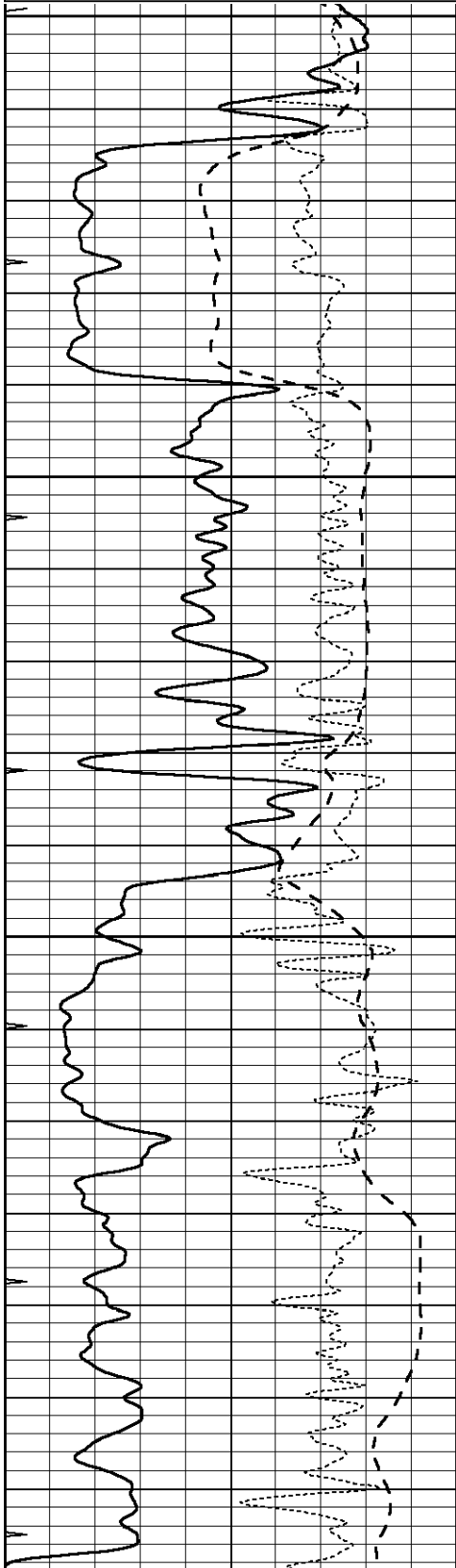


REPEAT SECTION

Database File: 3970ddn.db
 Dataset Pathname: pass2.6
 Presentation Format: _dil
 Dataset Creation: Tue Oct 08 06:15:15 2019 by Calc SOC 120430
 Charted by: Depth in Feet scaled 1:240

0	GAMMA RAY (GAPI)	150
-100	SP (mV)	100
-250	Rxo/Rt	50
0	MINMK	20

0.2	SHALLOW GUARD (Ohm-m)	2000
0.2	DEEP INDUCTION (Ohm-m)	2000
0.2	MEDIUM INDUCTION (Ohm-m)	2000

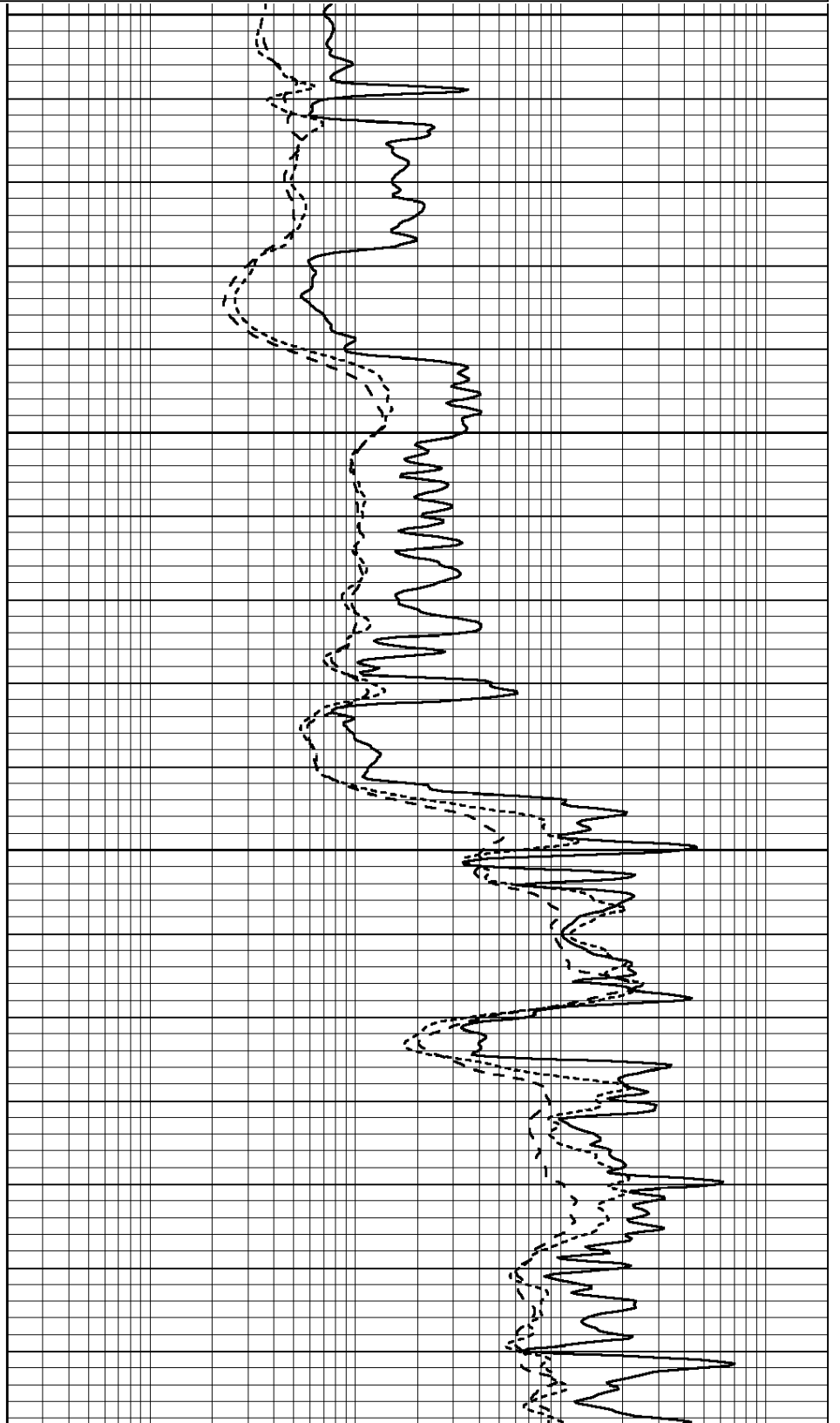


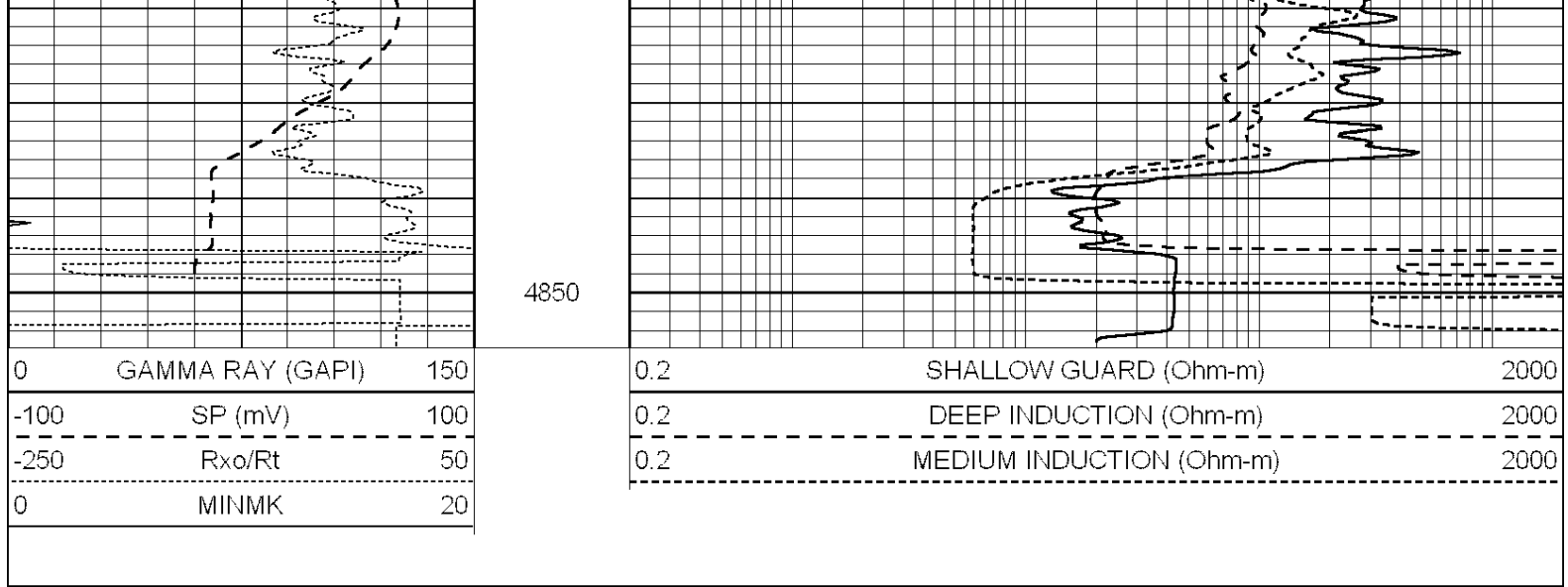
4650

4700

4750

4800





Calibration Report

Database File: 1598ddn.db
 Dataset Pathname: pass4
 Dataset Creation: Wed Aug 30 02:13:00 2017 by Log SOC 120430

Dual Induction Calibration Report

Serial-Model: PROBE7-DILG
 Surface Cal Performed: Wed Aug 30 00:06:33 2017
 Downhole Cal Performed: Mon Jul 28 12:02:56 2008
 After Survey Verification Performed: Mon Jul 28 12:02:56 2008

Surface Calibration		Readings			References			Results	
Loop:	Air	Loop		Air	Loop		m	b	
Deep	-0.014	0.629	V	0.000	400.000	mmho/m	620.000	0.000	
Medium	0.039	0.728	V	0.000	464.000	mmho/m	675.000	-44.000	
Internal:	Zero	Cal		Zero	Cal		m	b	
Deep	0.011	0.610	V	0.000	400.000	mmho/m	667.135	-7.256	
Medium	0.005	0.712	V	0.000	464.000	mmho/m	655.677	-3.102	

Downhole Calibration		Readings			References			Results	
	Zero	Cal		Zero	Cal		m'	b'	
Deep	0.000	0.000	mmho/m	14.508	388.384	mmho/m	1.000	0.000	
Medium	0.000	0.000	mmho/m	166.367	504.400	mmho/m	1.000	0.000	
LL3		7.500	V		1400.000	Ohm-m			
		0.000	V		20.000	Ohm-m			
		-7.200	V		4000.000	mmho-m			

After Survey Verification		Readings			Targets			Results	
	Zero	Cal		Zero	Cal		m'	b'	
Deep	0.000	0.000	mmho/m	0.000	0.000	mmho/m	0.000	0.000	
Medium	0.000	0.000	mmho/m	0.000	0.000	mmho/m	0.000	0.000	
LL3		1.000	Ohm-m		1.000	Ohm-m			
		0.000	Ohm-m		0.000	Ohm-m			
		1.000	mmho-m		1.000	mmho-m			

Master Calibration

Performed Mon Aug 21 11:27:42 2017

	Background	Magnesium	Aluminum	Sandstone	
Window 1	837.1	10632.5	2945.1	12110.1	cps
Window 2	772.0	9117.4	2570.1	10197.3	cps
Window 3	631.7	4669.0	1481.9	5042.9	cps
Window 4	187.0	187.5	185.9	189.9	cps
Long Space	0.0	8345.4	1798.1	9425.3	cps
Short Space	1.1	1927.9	1285.9	2050.2	cps
Rho		1.7100	2.5960	1.3800	g/cc
Pe		0.0000	2.5700	1.5500	
Rib Angle	: 45.2	Rib Slope	: 1.008	Density/Spine Ratio	: 0.558
Spine Angle	: 75.2	Spine Slope	: 3.790	Spine Intercept	: -19.6

Before Survey Verification

Performed Wed Dec 31 18:00:00 1969

Window 1	0.0	0.0	0.0	0.0	cps
Window 2	0.0	0.0	0.0	0.0	cps
Window 3	0.0	0.0	0.0	0.0	cps
Window 4	0.0	0.0	0.0	0.0	cps
Long Space	0.0	0.0	0.0	0.0	cps
Short Space	0.0	0.0	0.0	0.0	cps
Measured Rho		0.0000	0.0000	0.0000	g/cc
Measured Correction		0.0000	0.0000	0.0000	g/cc
Measured Pe			0.0000	0.0000	

After Survey Verification

Performed Wed Dec 31 18:00:00 1969

Window 1	0.0	0.0	0.0	0.0	cps
Window 2	0.0	0.0	0.0	0.0	cps
Window 3	0.0	0.0	0.0	0.0	cps
Window 4	0.0	0.0	0.0	0.0	cps
Long Space	0.0	0.0	0.0	0.0	cps
Short Space	0.0	0.0	0.0	0.0	cps
Measured Rho		0.0000	0.0000	0.0000	g/cc
Measured Correction		0.0000	0.0000	0.0000	g/cc
Measured Pe			0.0000	0.0000	

Compensated Neutron Calibration Report

Serial Number: 070808
Tool Model: Probe

PRE-SURVEY VERIFICATION

Detector	Readings	Measured	Target
Short Space	cps		
Long Space	cps	pu	pu

POST-SURVEY VERIFICATION

Detector	Readings	Measured	Target
Short Space	cps		
Long Space	cps	pu	pu

Gamma Ray Calibration Report

Serial Number:	070558	
Tool Model:	OPEN_GR	
Performed:	Wed May 31 00:09:32 2017	
Calibrator Value:	1.0	GAPI
Background Reading:	0.0	cps
Calibrator Reading:	1.0	cps
Sensitivity:	0.2800	GAPI/cps