



**COMPENSATED  
DENSITY/NEUTRON  
LOG**

Company L.D. DRILLING, INC.  
Well SAMPSON TRUST #1-13  
Field WILD CAT  
County NESS  
State KANSAS

Company L.D. DRILLING, INC.  
Well SAMPSON TRUST #1-13  
Field WILD CAT  
County NESS State KANSAS

Location: API # : 15-135-26077-00-00  
1450' FNL & 1410' FEL  
SEC 13 TWP 18S RGE 23W  
Permanent Datum GROUND LEVEL Elevation 2295  
Log Measured From KELLY BUSHING 5' A.G.L.  
Drilling Measured From KELLY BUSHING  
Elevation  
K.B. 2300  
D.F. 2298  
G.L. 2295

Date	09/12/19	
Run Number	ONE	
Depth Driller	4450	
Depth Logger	4451	
Bottom Logged Interval	4432	
Top Log Interval	3300	
Casing Driller	8 5/8" @ 329	
Casing Logger	329	
Bit Size	7 7/8"	
Type Fluid in Hole	CHEMICAL MUD	
Density / Viscosity	9.2/58	
pH / Fluid Loss	10.0/7.2	
Source of Sample	FLOWLINE	
Rm @ Meas. Temp	.8@83	
Rmt @ Meas. Temp	.60@83	
Rmc @ Meas. Temp	.96@83	
Source of Rmf / Rmc	MEASURED	
Rm @ BHT	.55@120	
Time Circulation Stopped	2 HOURS	
Time Logger on Bottom	///	
Maximum Recorded Temperature	120F	
Equipment Number	4010	
Location	HAYS, KANSAS	
Recorded By	GUS PFANENSTIEL	
Witnessed By	KIM SHOEMAKER	

<<< Fold Here >>>

All interpretations are opinions based on inferences from electrical or other measurements and we cannot and do not guarantee the accuracy or correctness of any interpretation, and we shall not, except in the case of gross or willful negligence on our part, be liable or responsible for any loss, costs, damages, or expenses incurred or sustained by anyone resulting from any interpretation made by any of our officers, agents or employees. These interpretations are also subject to our general terms and conditions set out in our current Price Schedule.

**Comments**

THANK YOU FOR USING ELI WIRELINE, HAYS, KS. (785) 628-6395

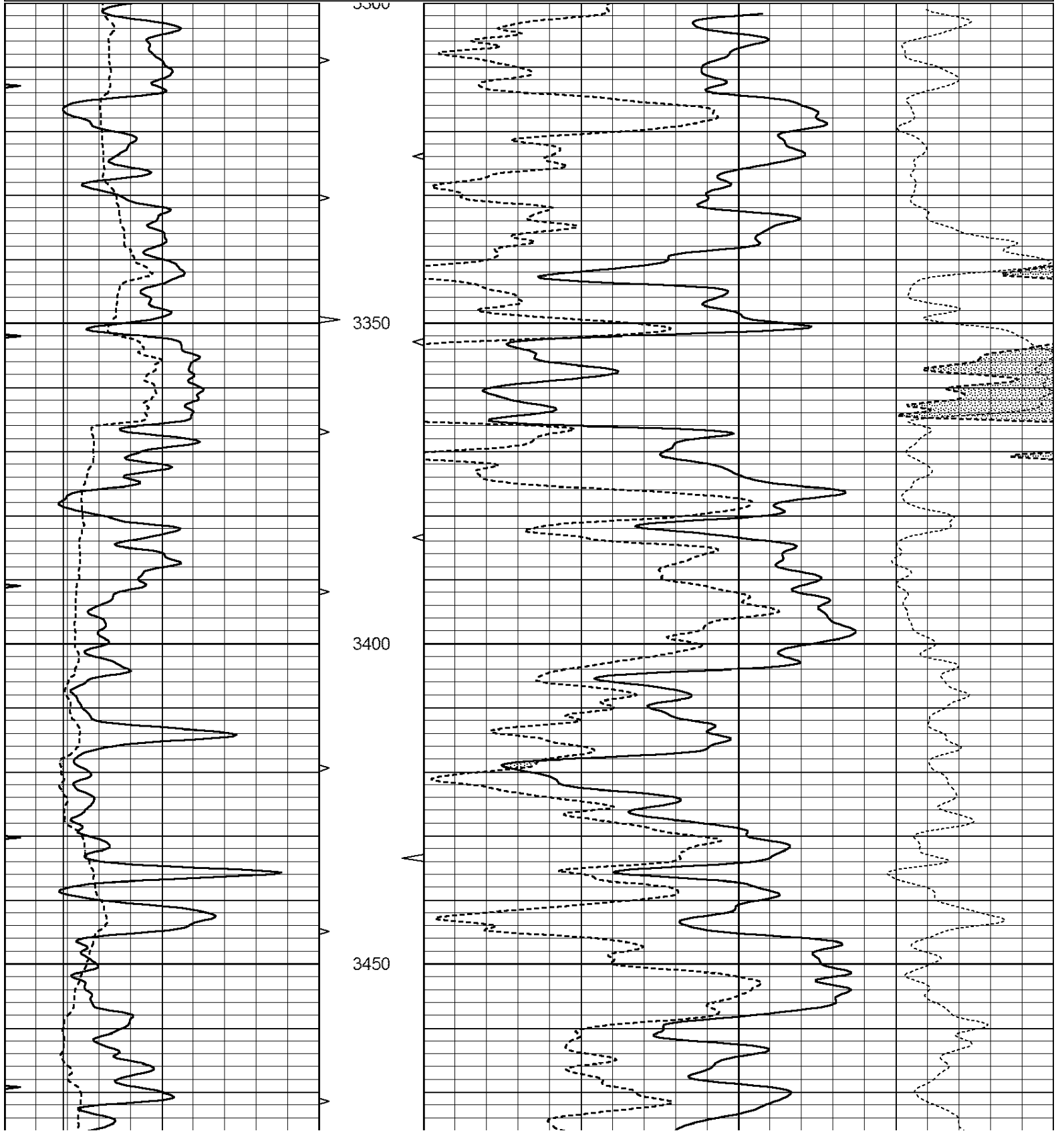
DIRECTIONS  
BAZINE WEST TO X RD. NORTH 3  
1/2 WEST, SOUTH INTO.

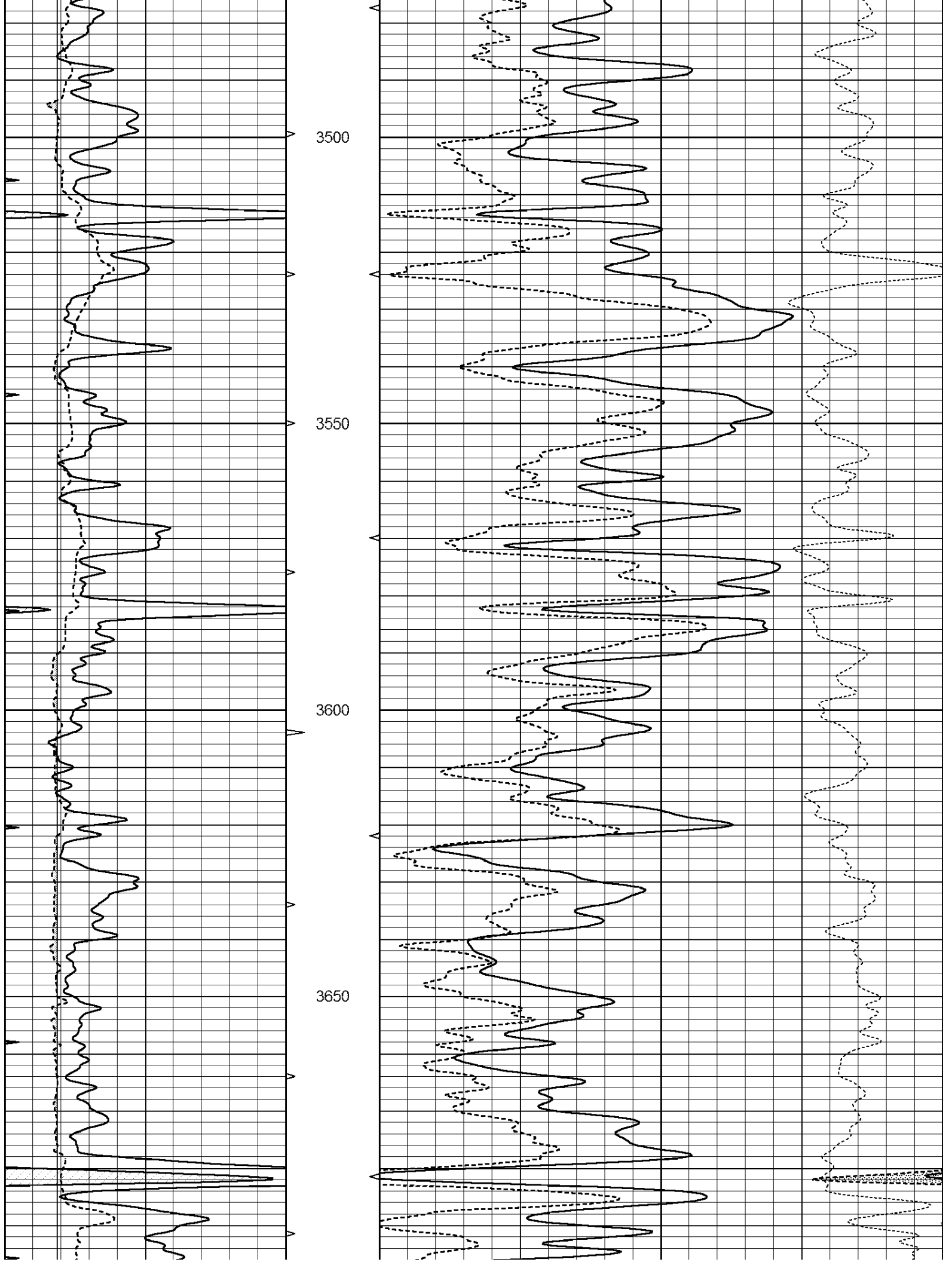


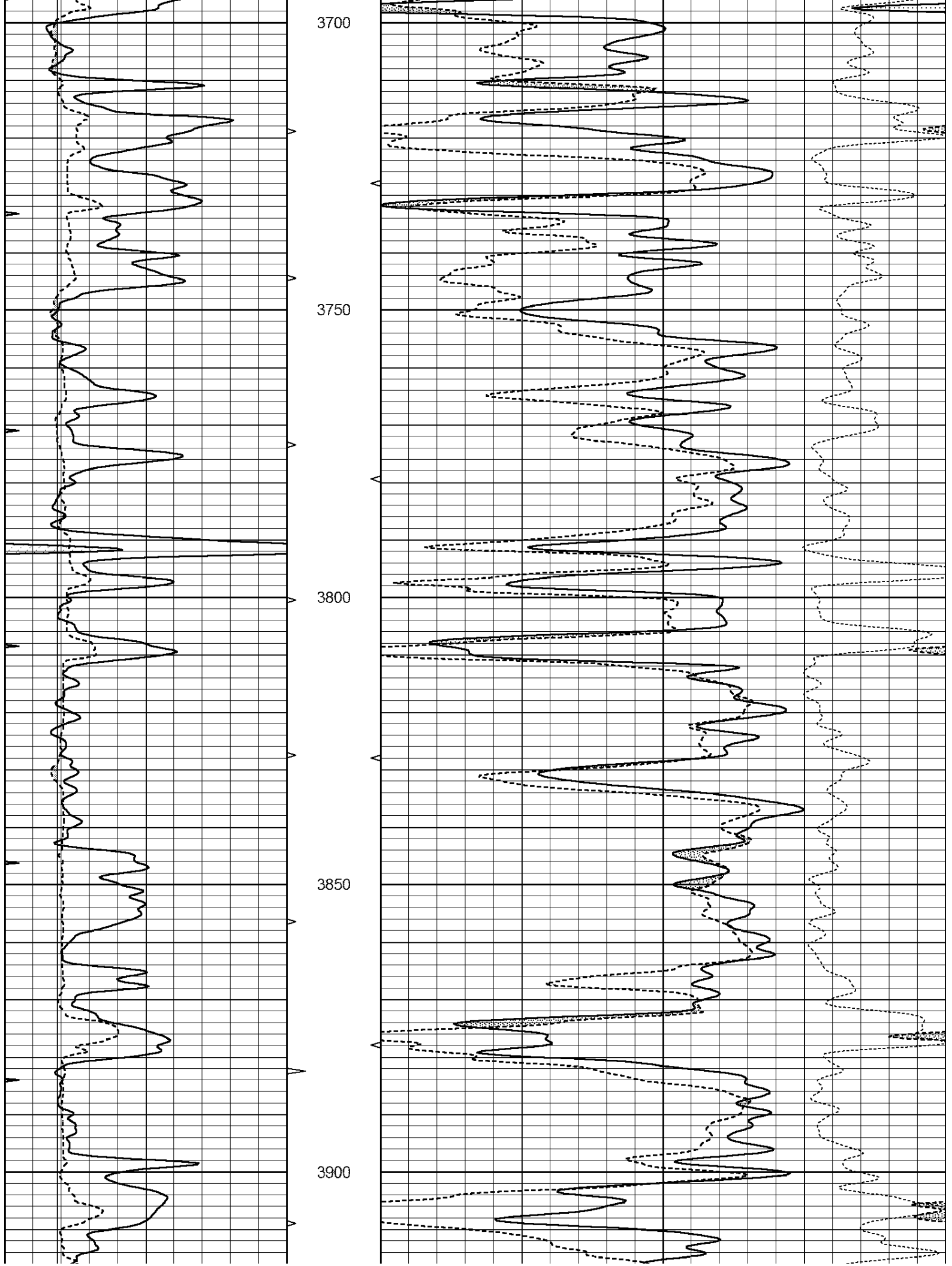
**MAIN PASS**

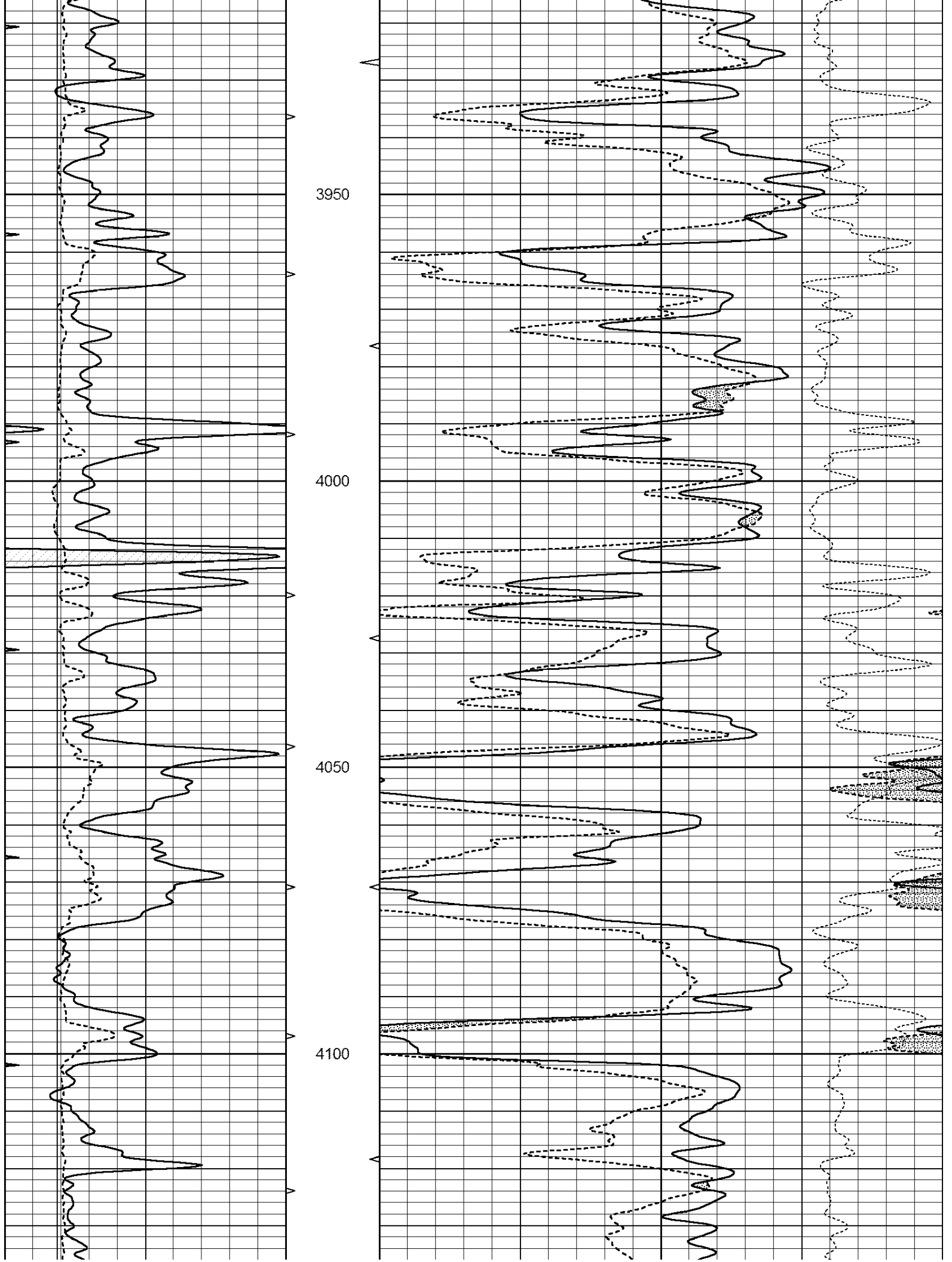
Database File: 4091ddn.db  
 Dataset Pathname: pass3.1  
 Presentation Format: den\_neu  
 Dataset Creation: Thu Sep 12 12:00:51 2019  
 Charted by: Depth in Feet scaled 1:240

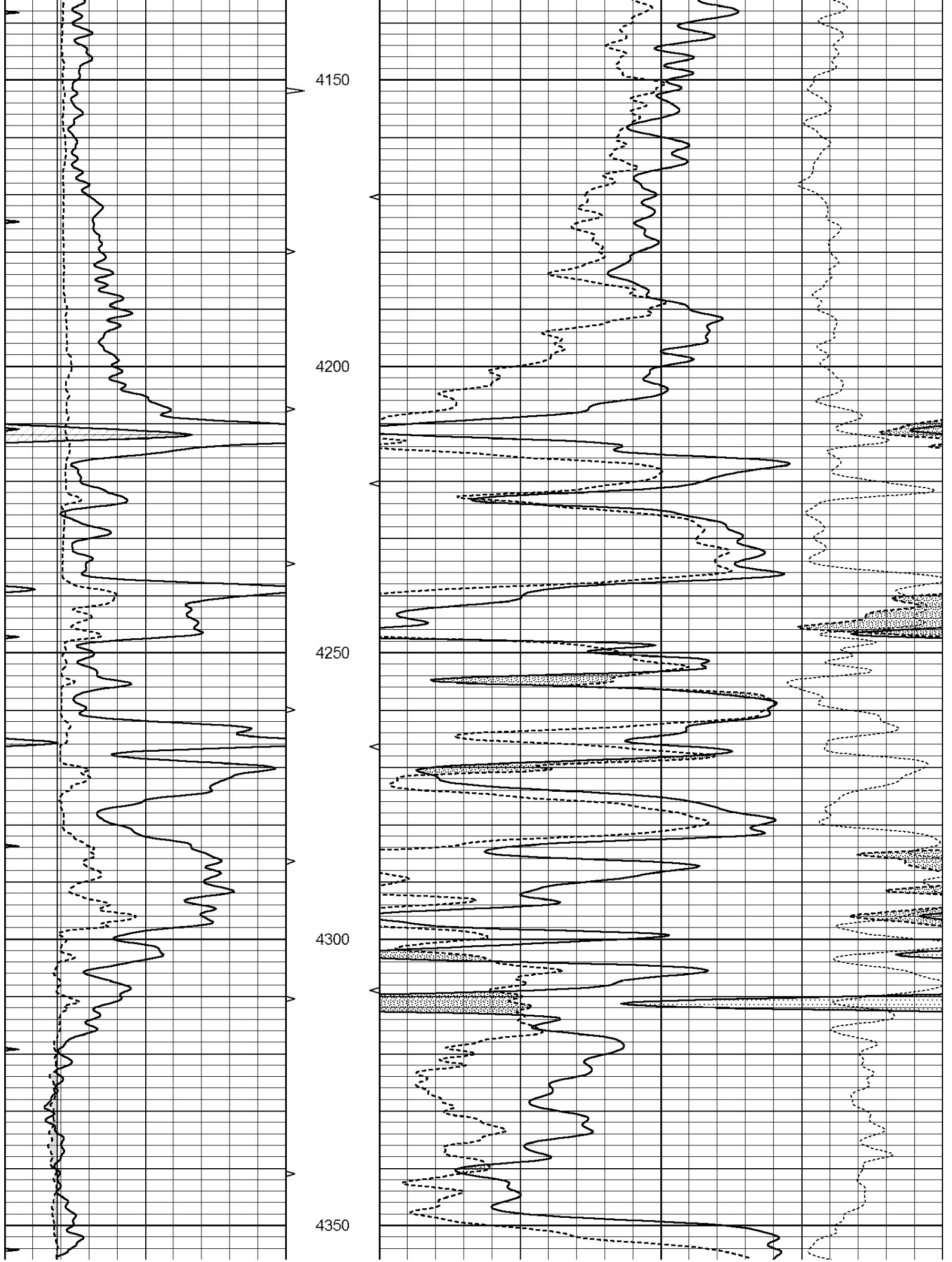
0	GAMMA RAY (GAPI)	150	ABHV	30	COMPENSATED DENSITY (pu)	-10
6	CALIPER (in)	16	10 (ft3)	0 30	COMPENSATED NEUTRON (pu)	-10
0	MINMK	20	TBHV		-0.25 CORRECTION (g/cc)	0.25
			0 (ft3)	10		

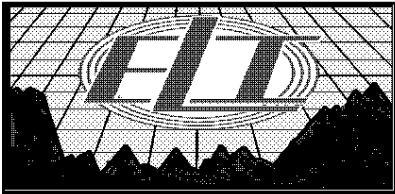
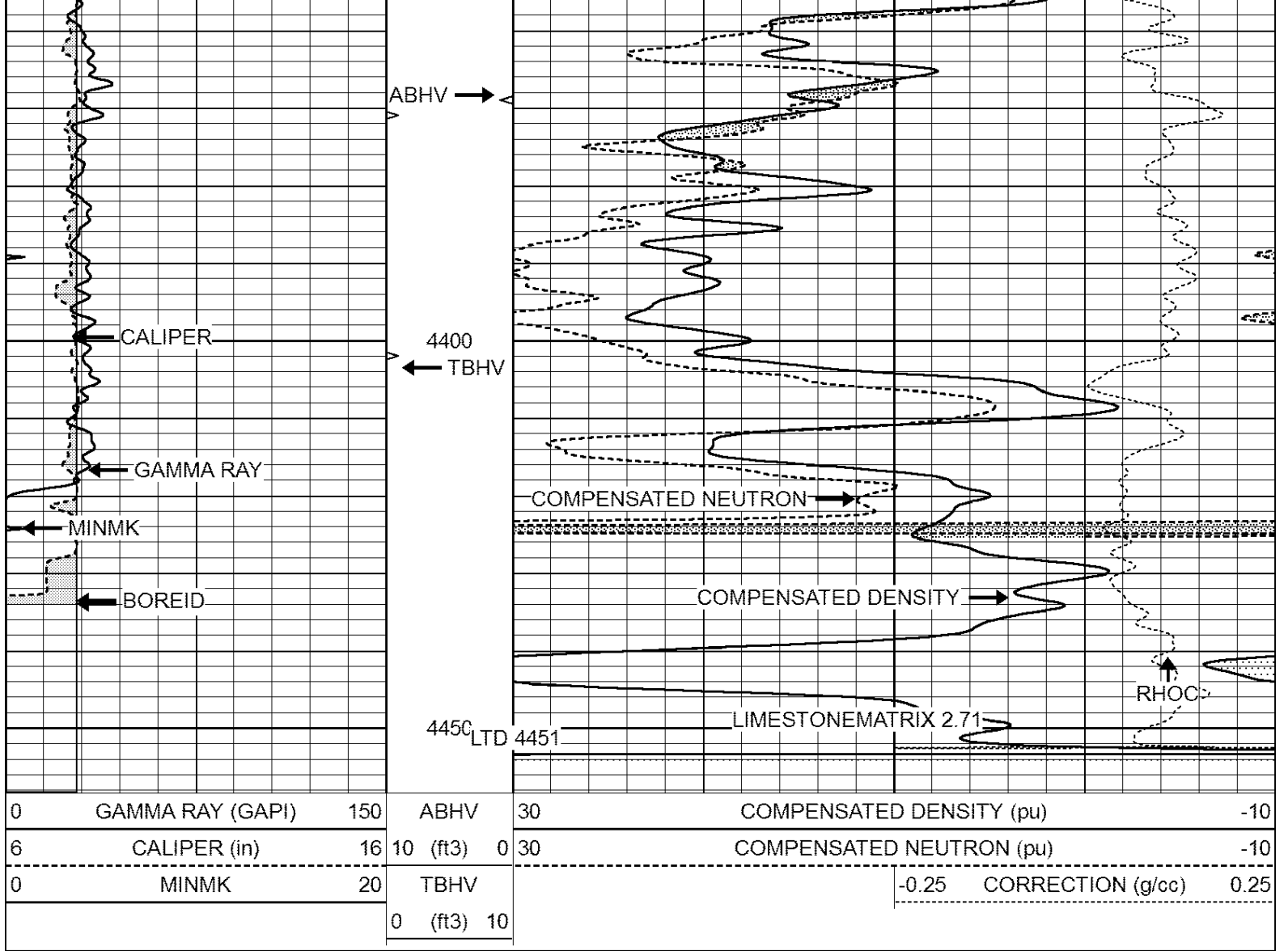








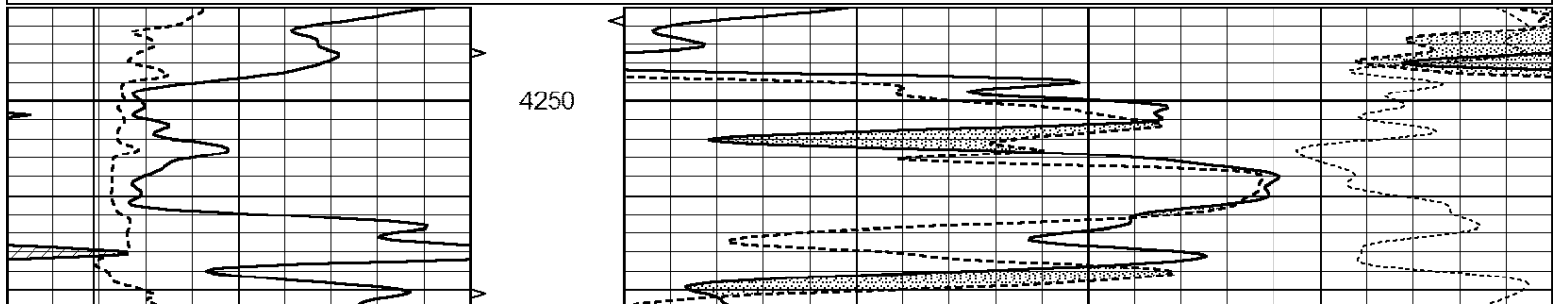


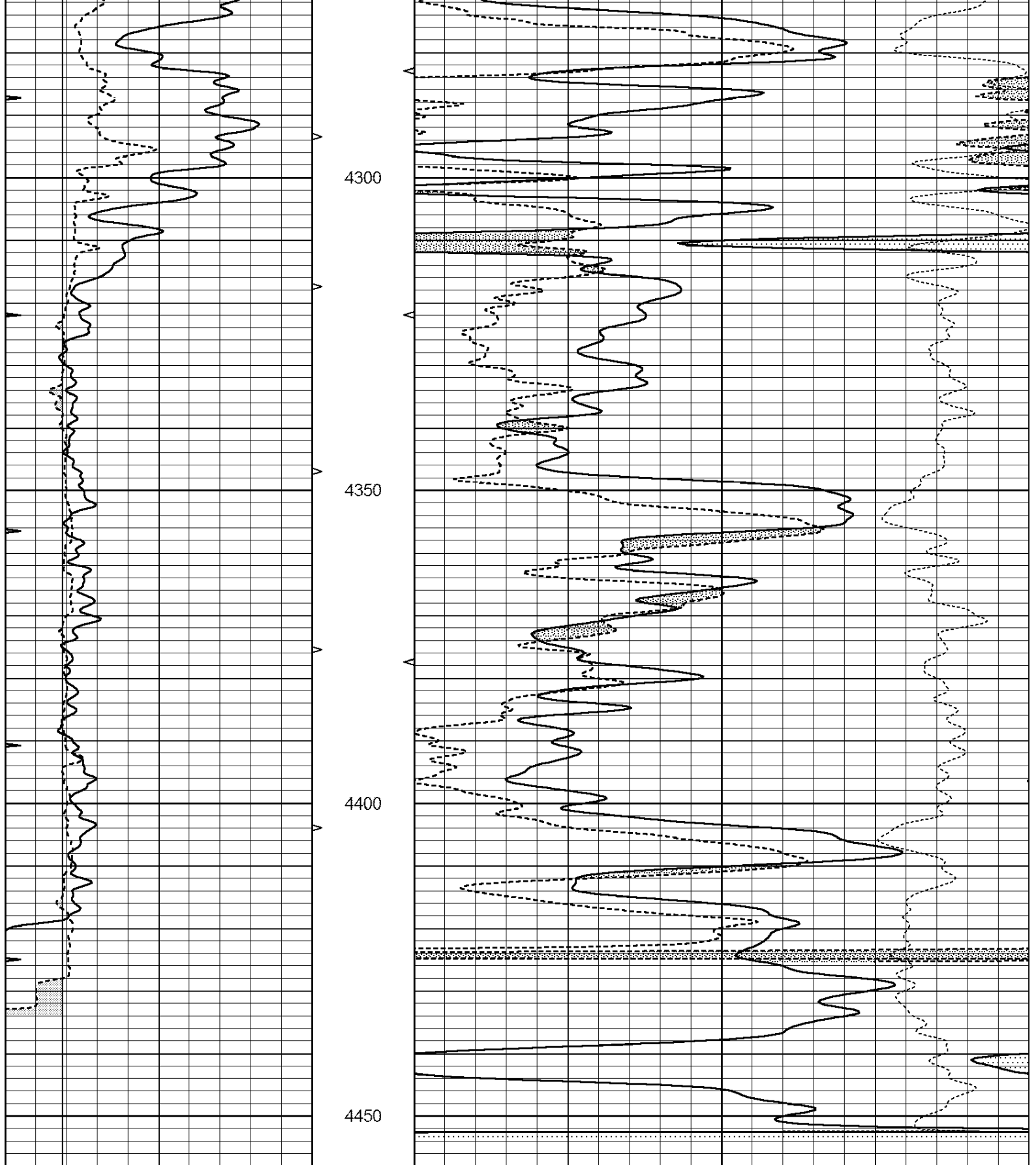


# REPEAT SECTION

Database File: 4091ddn.db  
 Dataset Pathname: pass2.1  
 Presentation Format: den\_neu  
 Dataset Creation: Thu Sep 12 11:35:09 2019  
 Charted by: Depth in Feet scaled 1:240

0	GAMMA RAY (GAPI)	150	ABHV	30	COMPENSATED DENSITY (pu)	-10	
6	CALIPER (in)	16	10 (ft3)	0 30	COMPENSATED NEUTRON (pu)	-10	
0	MINMK	20	TBHV		-0.25	CORRECTION (g/cc)	0.25
			0 (ft3)	10			





0	GAMMA RAY (GAPI)	150	ABHV	30	COMPENSATED DENSITY (pu)	-10	
6	CALIPER (in)	16	10 (ft3)	0 30	COMPENSATED NEUTRON (pu)	-10	
0	MINMK	20	TBHV		-0.25	CORRECTION (g/cc)	0.25
			0 (ft3)	10			

Calibration Report

Dual Induction Calibration Report

Serial-Model: PROBE8-DILG  
 Surface Cal Performed: Mon Sep 10 14:28:35 2018  
 Downhole Cal Performed: Mon Sep 10 14:28:38 2018  
 After Survey Verification Performed: Mon Sep 10 14:28:40 2018

Surface Calibration

Loop:	Readings			References			Results	
	Air	Loop		Air	Loop		m	b
Deep	0.015	0.648	V	0.000	400.000	mmho/m	620.000	0.000
Medium	0.029	0.796	V	0.000	464.000	mmho/m	590.000	-12.000
Internal:	Zero	Cal		Zero	Cal		m	b
Deep	0.017	0.657	V	0.000	400.000	mmho/m	625.153	-10.619
Medium	0.016	0.757	V	0.000	464.000	mmho/m	625.992	-9.739

Downhole Calibration

	Readings			References			Results	
	Zero	Cal		Zero	Cal		m'	b'
Deep	0.000	0.000	mmho/m	2.011	405.777	mmho/m	1.000	0.000
Medium	0.000	0.000	mmho/m	7.590	503.393	mmho/m	1.000	0.000
LL3		7.500	V		1500.000	Ohm-m		
		0.000	V		20.000	Ohm-m		
		-7.200	V		3800.000	mmho-m		

After Survey Verification

	Readings			Targets			Results	
	Zero	Cal		Zero	Cal		m'	b'
Deep	0.000	0.000	mmho/m	0.000	0.000	mmho/m	0.000	0.000
Medium	0.000	0.000	mmho/m	0.000	0.000	mmho/m	0.000	0.000
LL3		1.000	Ohm-m		1.000	Ohm-m		
		0.000	Ohm-m		0.000	Ohm-m		
		1.000	mmho-m		1.000	mmho-m		

Litho Density Calibration Report  
 Serial: 006 Model: PRB

Master Calibration

Performed Fri Feb 22 09:59:16 2019

	Background	Magnesium	Aluminum	Sandstone	
Window 1	1164.1	7287.2	2529.1	8656.3	cps
Window 2	1091.2	5350.1	2037.8	6279.8	cps
Window 3	821.7	2635.2	1183.7	2961.9	cps
Window 4	277.9	276.4	275.2	279.7	cps
Long Space	0.0	4355.6	946.5	5188.6	cps
Short Space	1.6	1496.1	994.4	1563.6	cps
Rho		1.7100	2.5960	1.3800	g/cc
Pe		0.0000	2.5700	1.5500	
Rib Angle	: 44.8	Rib Slope	: 0.993	Density/Spine Ratio	: 0.569
Spine Angle	: 74.8	Spine Slope	: 3.682	Spine Intercept	: -18.6

Before Survey Verification

Performed Wed Dec 31 18:00:00 1969

	Background	Magnesium	Aluminum	Sandstone	
Window 1	0.0	0.0	0.0	0.0	cps

Window 1	0.0	0.0	0.0	0.0	cps
Window 2	0.0	0.0	0.0	0.0	cps
Window 3	0.0	0.0	0.0	0.0	cps
Window 4	0.0	0.0	0.0	0.0	cps
Long Space	0.0	0.0	0.0	0.0	cps
Short Space	0.0	0.0	0.0	0.0	cps
Measured Rho		0.0000	0.0000	0.0000	g/cc
Measured Correction		0.0000	0.0000	0.0000	g/cc
Measured Pe			0.0000	0.0000	

After Survey Verification

Performed Wed Dec 31 18:00:00 1969

Window 1	0.0	0.0	0.0	0.0	cps
Window 2	0.0	0.0	0.0	0.0	cps
Window 3	0.0	0.0	0.0	0.0	cps
Window 4	0.0	0.0	0.0	0.0	cps
Long Space	0.0	0.0	0.0	0.0	cps
Short Space	0.0	0.0	0.0	0.0	cps
Measured Rho		0.0000	0.0000	0.0000	g/cc
Measured Correction		0.0000	0.0000	0.0000	g/cc
Measured Pe			0.0000	0.0000	

Compensated Neutron Calibration Report

Serial Number: 6I  
Tool Model: G

CALIBRATION

Detector	Readings	Target	Normalization
Short Space	1.00 cps	1.00 cps	1.0000
Long Space	1.00 cps	1.00 cps	1.0000

PRE-SURVEY VERIFICATION

Detector	Readings	Measured	Target
1) Short Space	cps		
Long Space	cps	pu	pu
2) Short Space	cps		
Long Space	cps	pu	
3) Short Space	cps		
Long Space	cps	pu	

POST-SURVEY VERIFICATION

Detector	Readings	Measured	Target
1) Short Space	cps		
Long Space	cps	pu	pu
2) Short Space	cps		
Long Space	cps	pu	pu
3) Short Space	cps		
Long Space	cps	pu	pu

Gamma Ray Calibration Report

Serial Number: GR6  
Tool Model: OPEN  
Performed: Wed Jul 03 12:57:34 2019

Calibrator Value:	150.0	GAPI
Background Reading:	0.0	cps
Calibrator Reading:	276.0	cps
Sensitivity:	0.5700	GAPI/cps