



MICRO LOG

Company L.D. DRILLING, INC.  
 Well SAMPSON TRUST #1-13  
 Field WILDCAT  
 County NESS State KANSAS

Location: API # : 15-135-26077-00-00  
 1450' FNL & 1410' FEL  
 SEC 13 TWP 18S RGE 23W  
 Permanent Datum GROUND LEVEL Elevation 2295  
 Log Measured From KELLY BUSHING 5' A.G.L.  
 Drilling Measured From KELLY BUSHING  
 Other Services CDL/CNL/DIL  
 Elevation K.B. 2300  
 D.F. 2298  
 G.L. 2295

Date	09/12/19
Run Number	ONE
Depth Driller	4450
Depth Logger	4451
Bottom Logged Interval	4449
Top Log Interval	3300
Casing Driller	8 5/8" @ 329
Casing Logger	329
Bit Size	7 7/8"
Type Fluid in Hole	CHEMICAL MUD
Density / Viscosity	9.2/58
pH / Fluid Loss	10.0/7.2
Source of Sample	FLOWLINE
Rm @ Meas. Temp	.8@83
Rmt @ Meas. Temp	.60@83
Rmc @ Meas. Temp	.96@83
Source of Rmf / Rmc	MEASURED
Rm @ BHT	.55@120
Time Circulation Stopped	2 HOURS
Time Logger on Bottom	///
Maximum Recorded Temperature	120F
Equipment Number	4010
Location	HAYS, KANSAS
Recorded By	GUS PFANENSTIEL
Witnessed By	KIM SHOEMAKER

<<< Fold Here >>>

All interpretations are opinions based on inferences from electrical or other measurements and we cannot and do not guarantee the accuracy or correctness of any interpretation, and we shall not, except in the case of gross or willful negligence on our part, be liable or responsible for any loss, costs, damages, or expenses incurred or sustained by anyone resulting from any interpretation made by any of our officers, agents or employees. These interpretations are also subject to our general terms and conditions set out in our current Price Schedule.

Comments

THANK YOU FOR USING ELI WIRELINE, HAYS, KS. (785) 628-6395

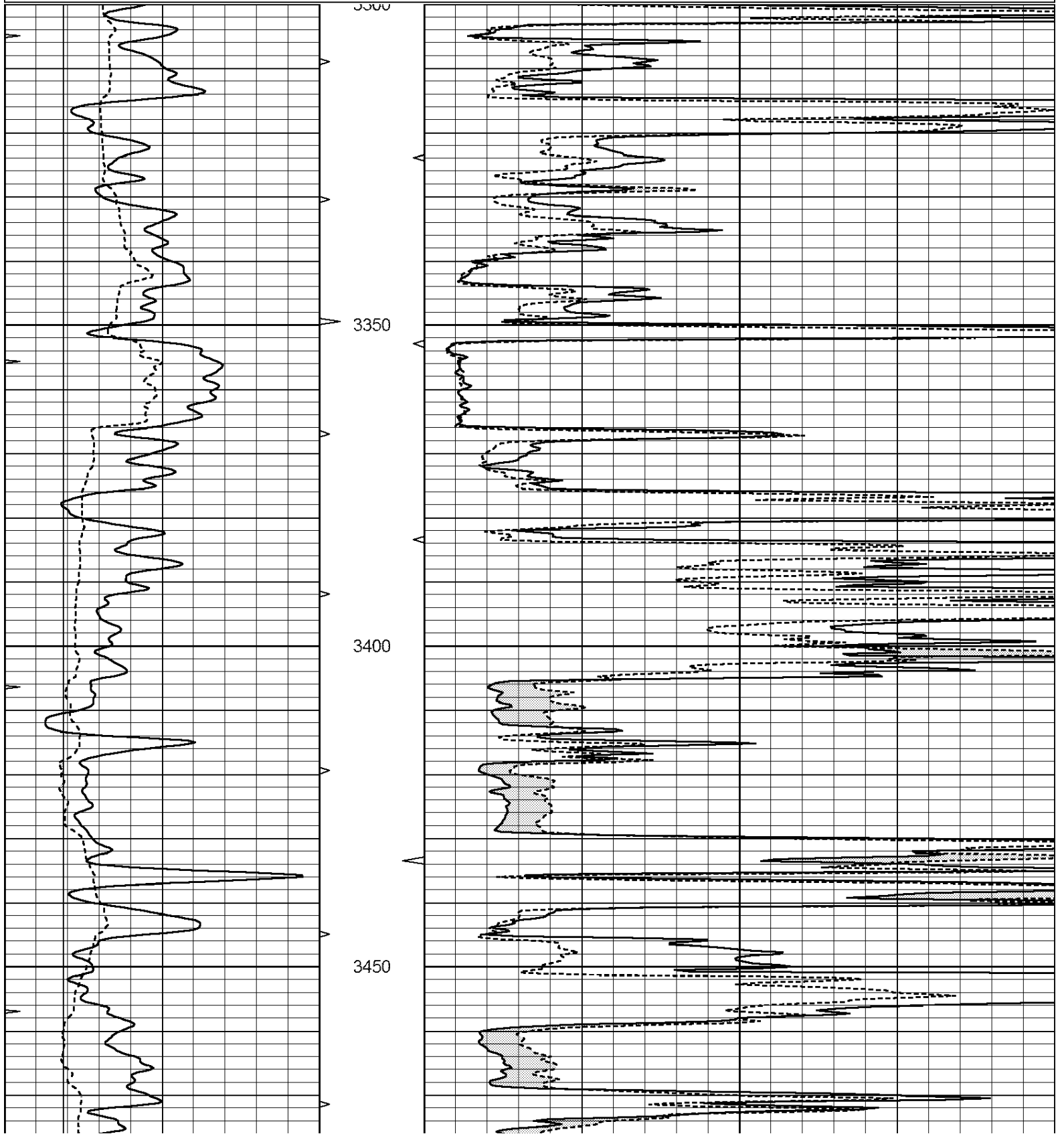
DIRECTIONS  
 BAZINE WEST TO X RD. NORTH 3  
 1/2 WEST, SOUTH INTO.

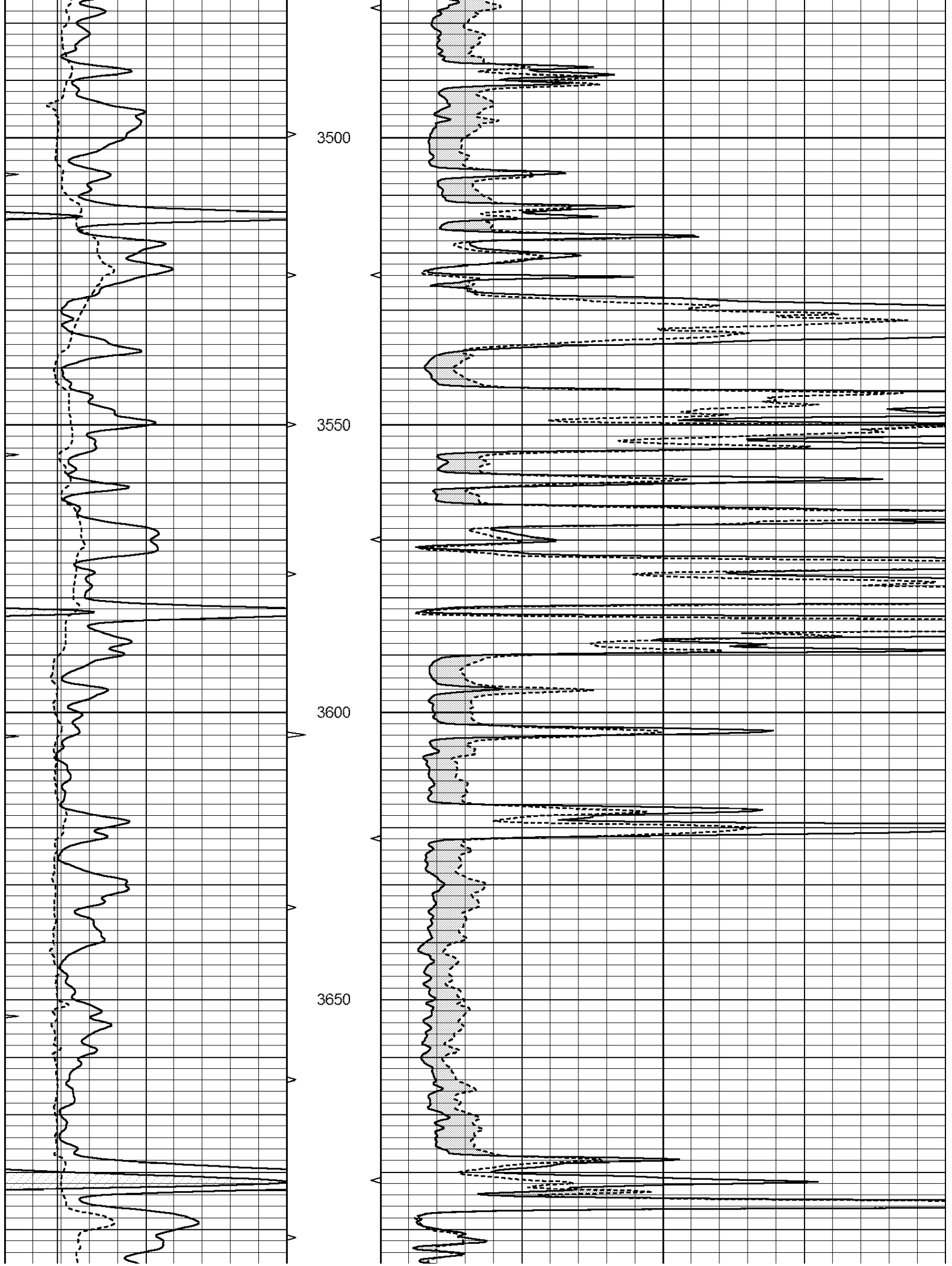


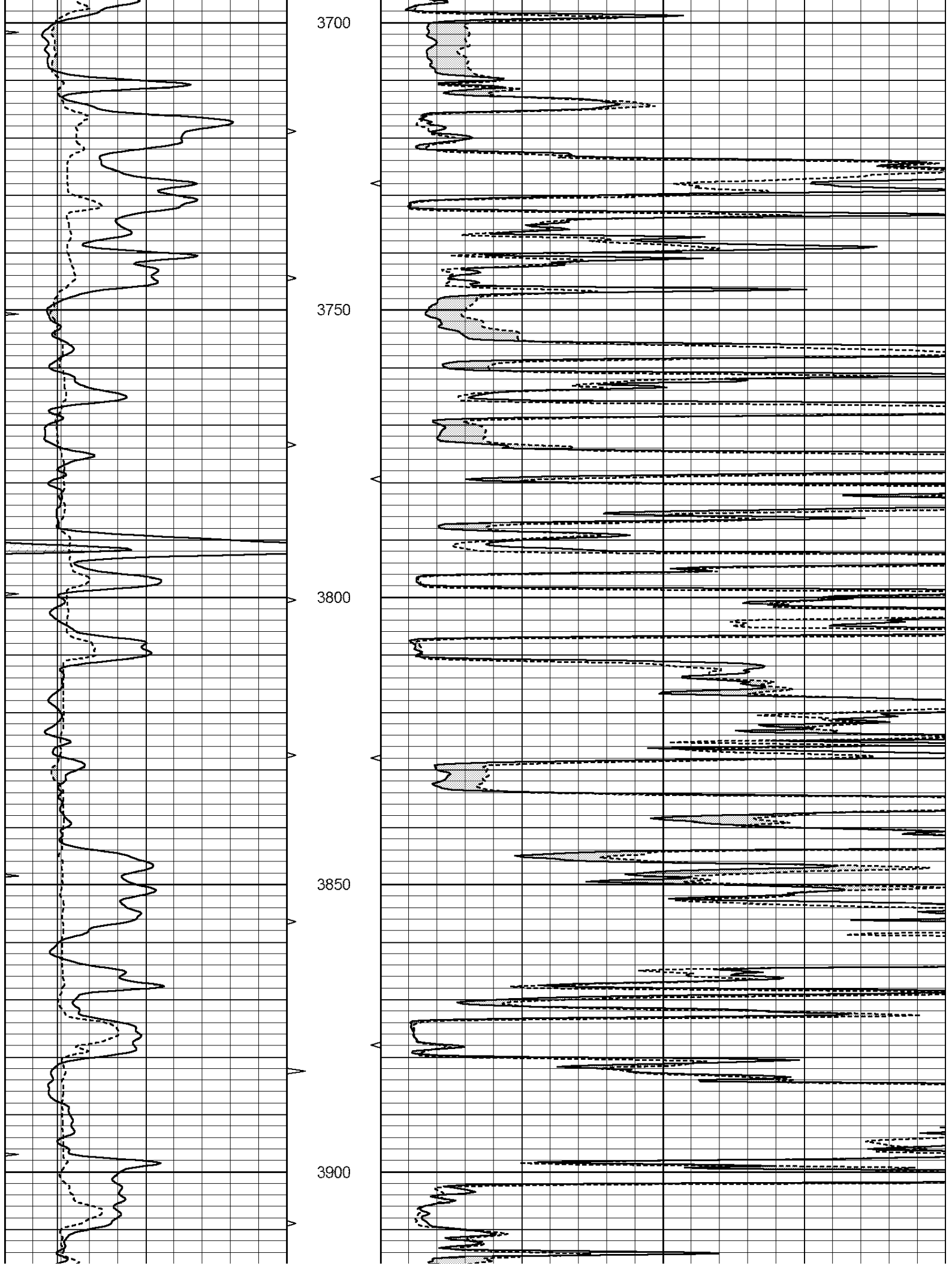
MAIN PASS

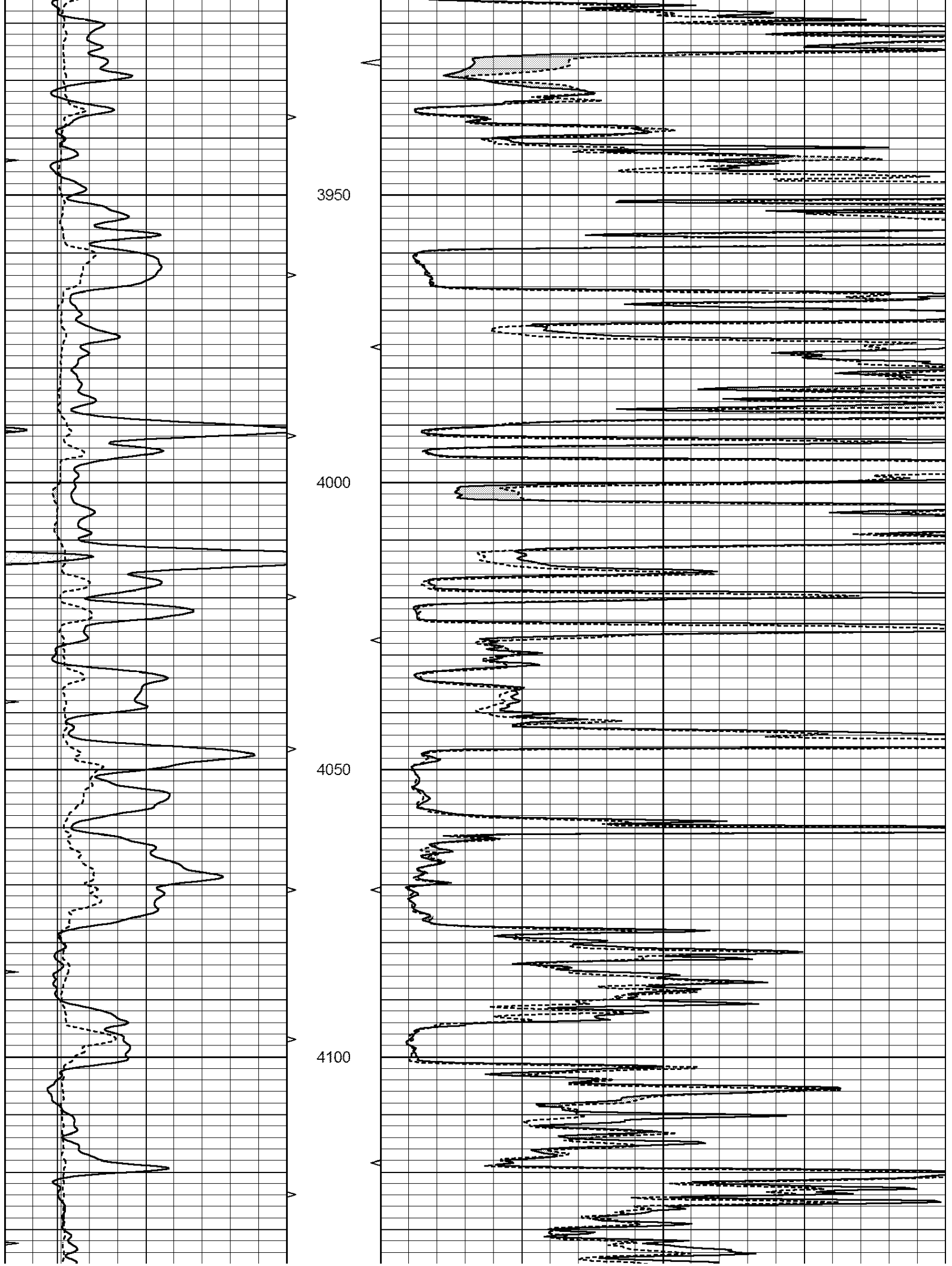
Database File: 4091ddn.db  
 Dataset Pathname: pass7.1  
 Presentation Format: \_micro  
 Dataset Creation: Thu Sep 12 17:04:34 2019  
 Charted by: Depth in Feet scaled 1:240

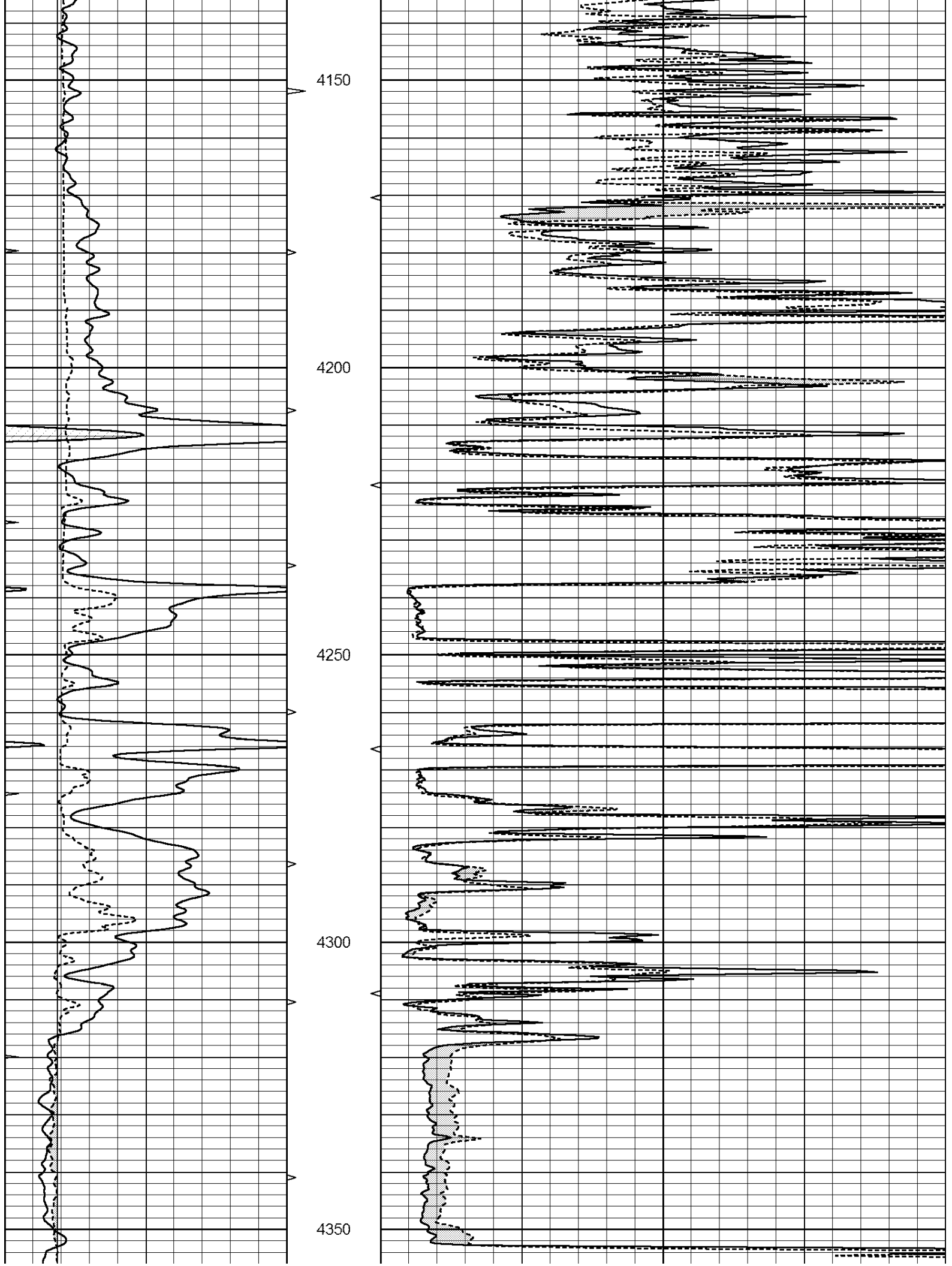
0	GAMMA RAY (GAPI)	150	ABHV	0	MEL1.5 (Ohm-m)	40
6	CALIPER (in)	16	10 (ft3)	0	MEL2.0 (Ohm-m)	40
0	MINMK	20	TBHV			
			0 (ft3)	10		

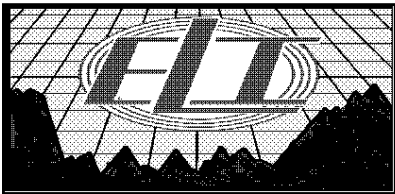
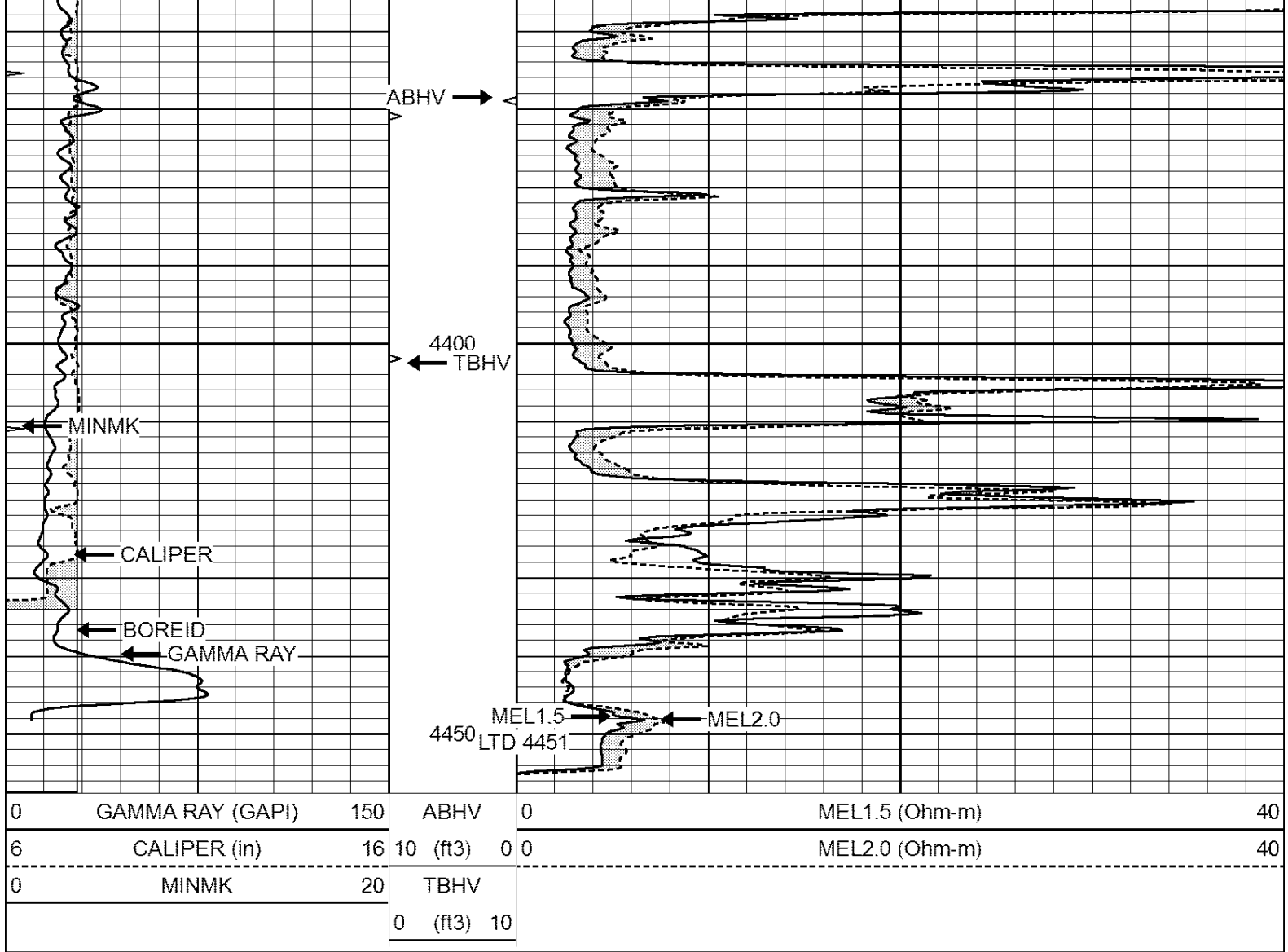








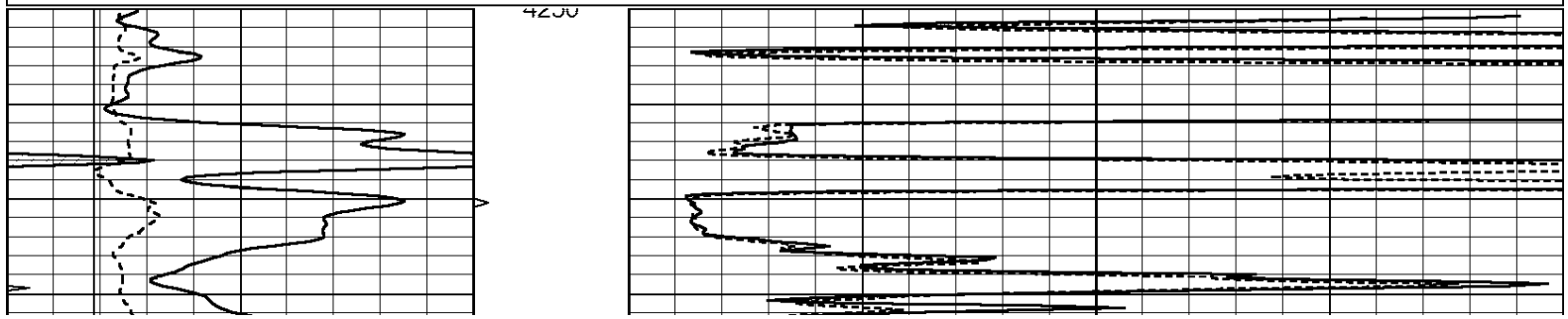


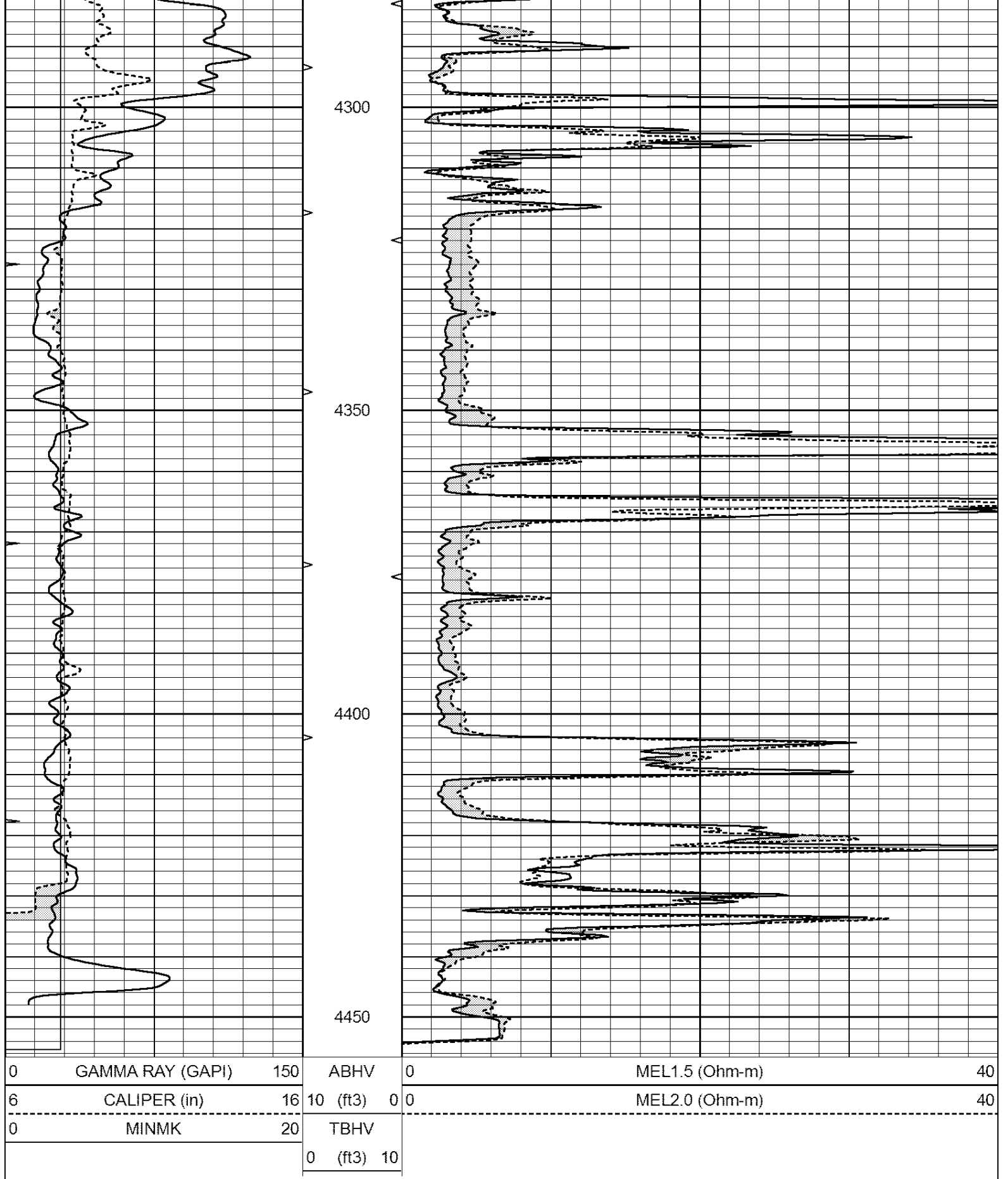


# REPEAT SECTION

Database File: 4091ddn.db  
 Dataset Pathname: pass6.1  
 Presentation Format: \_micro  
 Dataset Creation: Thu Sep 12 16:49:39 2019  
 Charted by: Depth in Feet scaled 1:240

0	GAMMA RAY (GAPI)	150	ABHV	0	MEL1.5 (Ohm-m)	40
6	CALIPER (in)	16	10 (ft3)	0 0	MEL2.0 (Ohm-m)	40
0	MINMK	20	TBHV			
			0 (ft3)	10		





Calibration Report

Database File: 4091ddn.db  
 Dataset Pathname: pass6.1  
 Dataset Creation: Thu Sep 12 16:49:39 2019

Serial Number: MICRO5  
Tool Model: PROBE  
Performed: Fri Aug 09 14:18:04 2019

Caliper Calibration: Gain=3.843      Offset=-10.132

	Low Cal	High Cal
References	7.000	15.000
Readings	4.458	6.539

1.5" Calibration: Gain=45.159      Offset=-0.295

	Low Cal	High Cal
References	0.000	20.000
Readings	0.015	1.007

2" Calibration: Gain=75.235      Offset=-0.888

	Low Cal	High Cal
References	0.000	20.000
Readings	0.008	0.908

#### Gamma Ray Calibration Report

Serial Number: GR5  
Tool Model: OPEN  
Performed: Mon Aug 12 13:38:04 2019

Calibrator Value: 1.0      GAPI

Background Reading: 0.0      cps  
Calibrator Reading: 1.0      cps

Sensitivity: 0.5000      GAPI/cps