



**COMPENSATED  
DENSITY / NEUTRON  
LOG**

Company C. G. OIL COMPANY, LLC.  
Well WIL #1  
Field AIR BASE  
County ELLIS  
State KANSAS

Company C. G. OIL COMPANY, LLC.  
Well WIL #1  
Field AIR BASE  
County ELLIS State KANSAS

Location: API # : 15-051-26964-0000  
2310' FNL & 2310' FEL  
SW - SW - NE/4  
SEC 22 TWP 13S RGE 16W  
Permanent Datum GROUND LEVEL Elevation 1939  
Log Measured From KELLY BUSHING 8' A.G.L.  
Drilling Measured From KELLY BUSHING  
Other Services DIL/MEL  
Elevation K.B. 1947  
D.F. 1945  
G.L. 1939

Date	8/7/19		
Run Number	ONE		
Depth Driller	3510		
Depth Logger	3506		
Bottom Logged Interval	3482		
Top Log Interval	2800		
Casing Driller	8 5/8" @ 1067'		
Casing Logger	1066		
Bit Size	7 7/8"		
Type Fluid in Hole	CHEMICAL MUD	CHLORIDES 12,500 PPM	
Density / Viscosity	9.1/49		
pH / Fluid Loss	9.5/11.4		
Source of Sample	FLOWLINE		
Rim @ Meas. Temp	.290 @ 85F		
Rmf @ Meas. Temp	.218 @ 85F		
Rmc @ Meas. Temp	.348 @ 85F		
Source of Rmf / Rmc	MEASUREMENT		
Rim @ BHT	.220 @ 112F		
Time Circulation Stopped	2 HOURS		
Time Logger on Bottom	2:30 A.M.		
Maximum Recorded Temperature	112F		
Equipment Number	922339		
Location	HAYS, KANSAS		
Recorded By	JEFF LUEBBERS		
Witnessed By	ROGER FISHER	RON SCHMIDTBERGER	TERRY PLESKER

<<< Fold Here >>>

All interpretations are opinions based on inferences from electrical or other measurements and we cannot and do not guarantee the accuracy or correctness of any interpretation, and we shall not, except in the case of gross or willful negligence on our part, be liable or responsible for any loss, costs, damages, or expenses incurred or sustained by anyone resulting from any interpretation made by any of our officers, agents or employees. These interpretations are also subject to our general terms and conditions set out in our current Price Schedule.

**Comments**

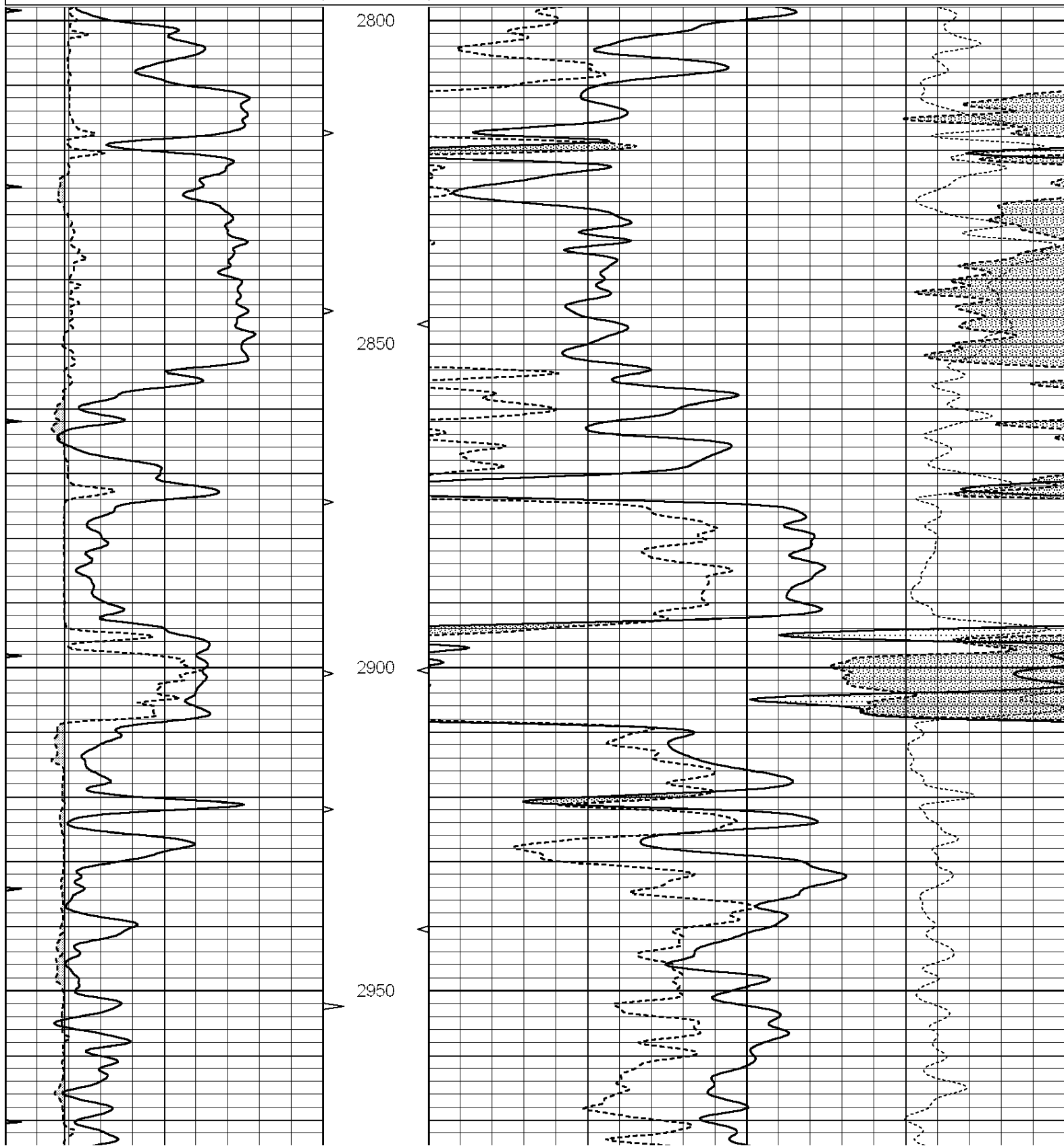
THANK YOU FOR USING ELI WIRELINE HAYS, KANSAS (785) 628-6395  
DIRECTIONS  
VICTORIA & I-70, 3N. TO "FAIRGROUND RD.", 3 1/2E., S. INTO @TANK BATTERY

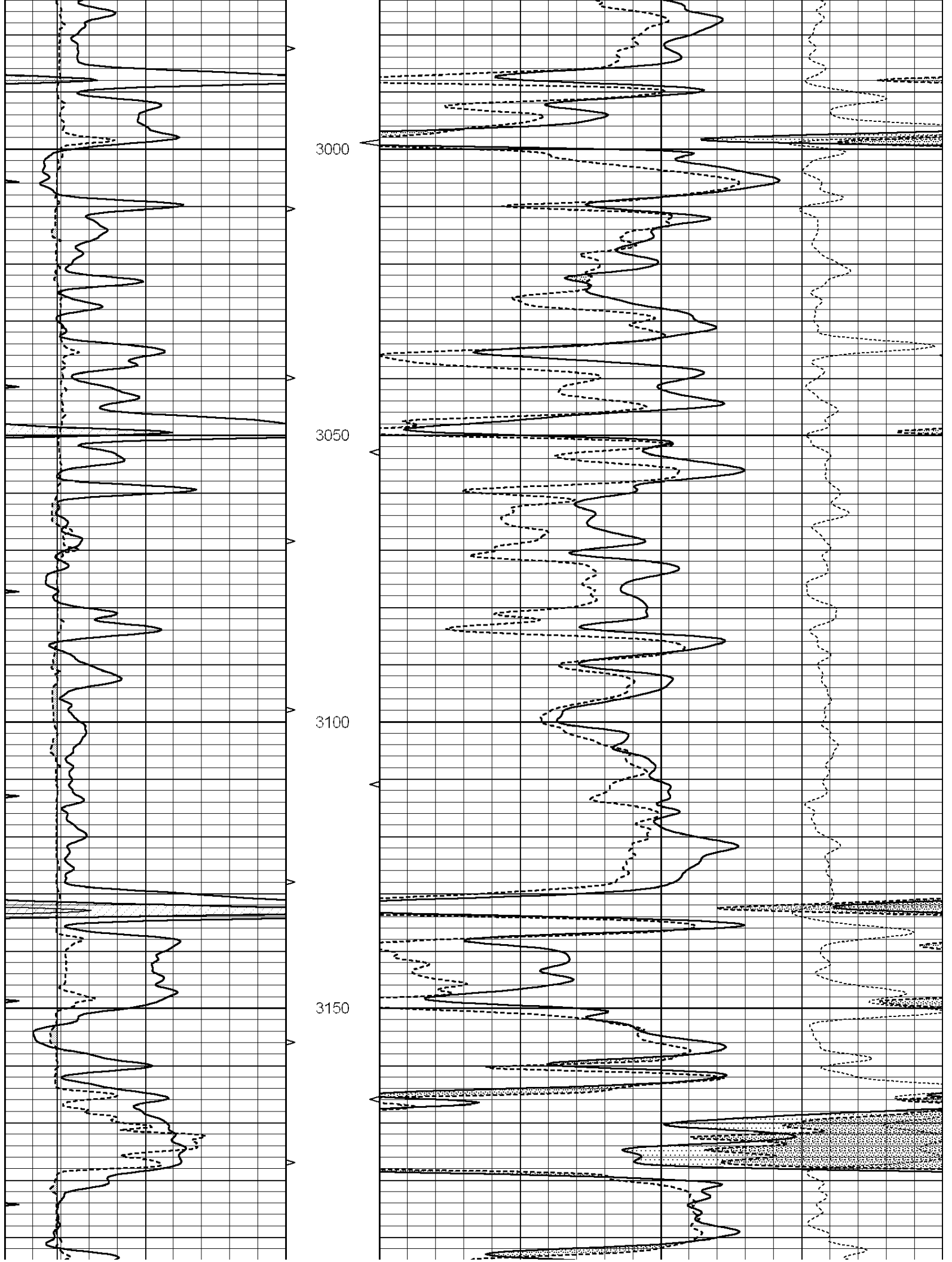


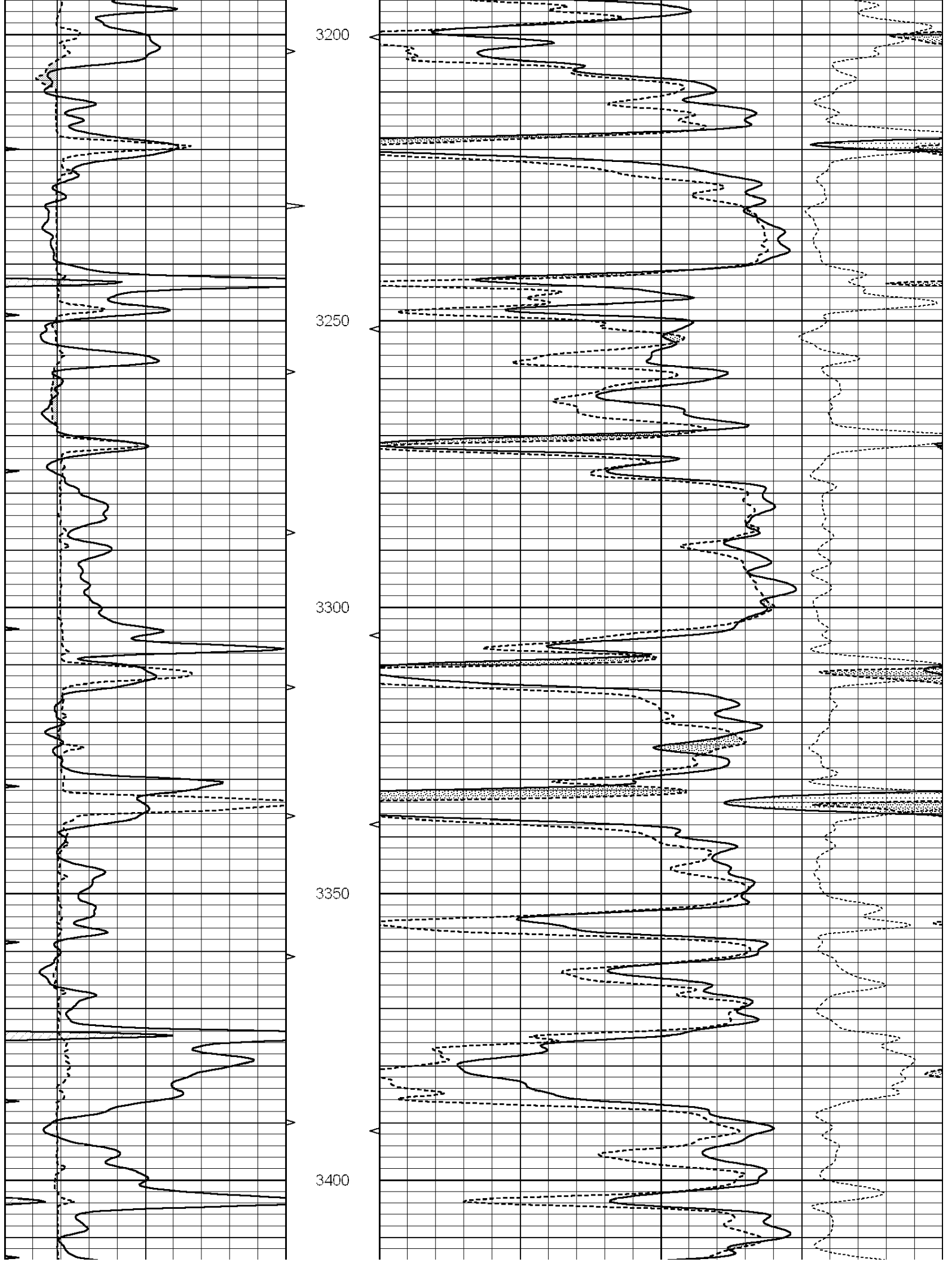
**MAIN SECTION**

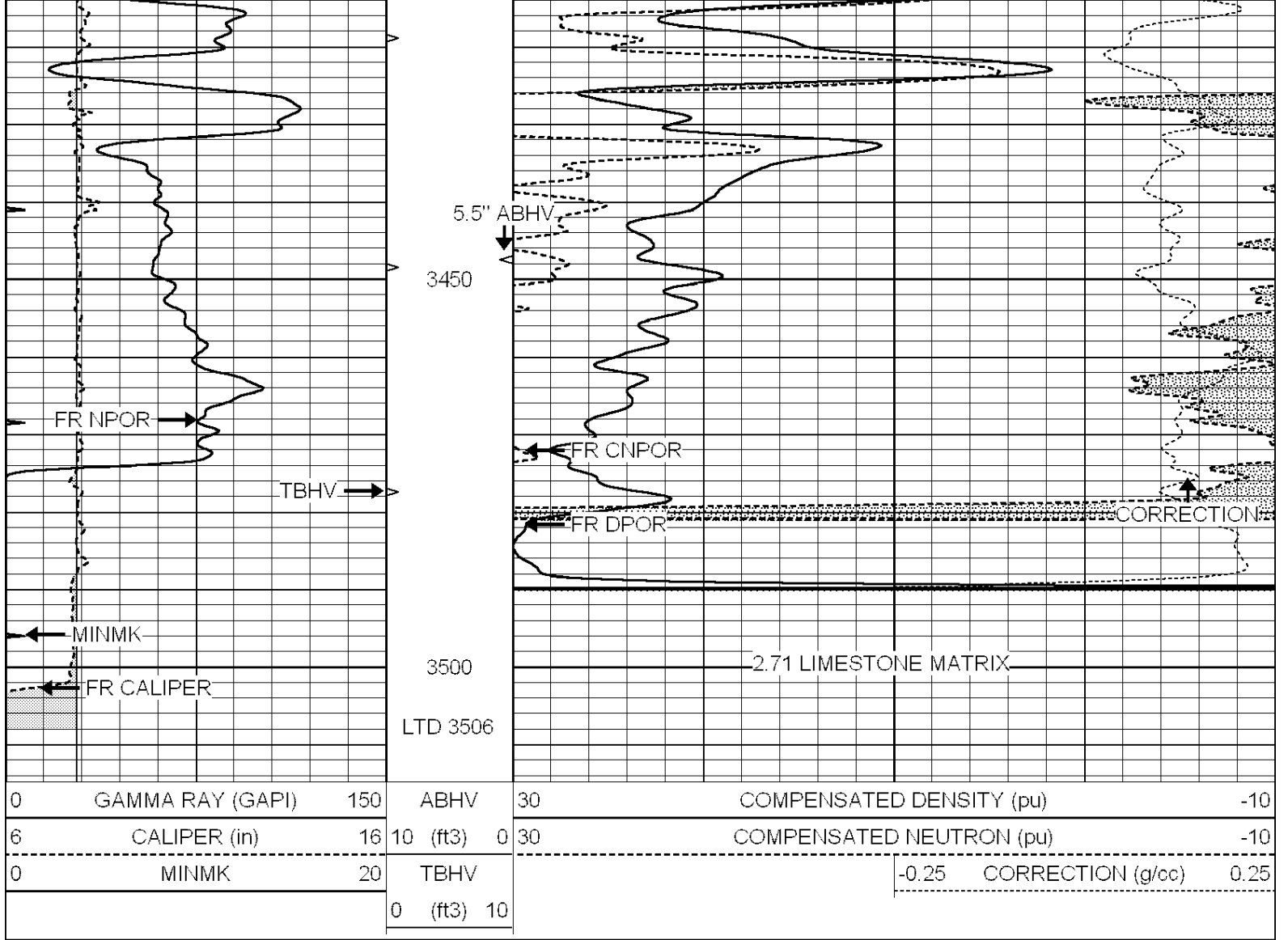
Database File: 3750ddn.db  
 Dataset Pathname: pass4.6  
 Presentation Format: den\_neu  
 Dataset Creation: Wed Aug 07 04:54:59 2019  
 Charted by: Depth in Feet scaled 1:240

0	GAMMA RAY (GAPI)	150	ABHV	30	COMPENSATED DENSITY (pu)	-10
6	CALIPER (in)	16	10 (ft3)	0 30	COMPENSATED NEUTRON (pu)	-10
0	MINMK	20	TBHV		-0.25 CORRECTION (g/cc)	0.25
			0 (ft3)	10		

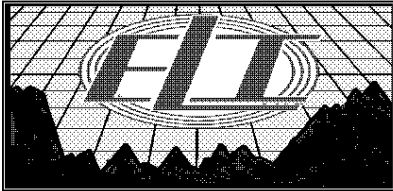








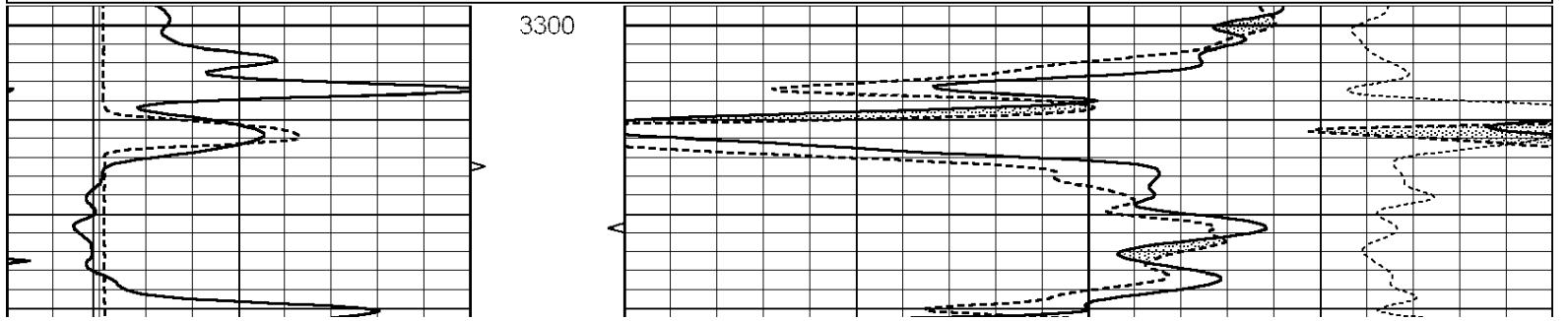
0	GAMMA RAY (GAPI)	150	ABHV	30	COMPENSATED DENSITY (pu)	-10
6	CALIPER (in)	16	10 (ft3)	0 30	COMPENSATED NEUTRON (pu)	-10
0	MINMK	20	TBHV		-0.25 CORRECTION (g/cc)	0.25
			0 (ft3)	10		

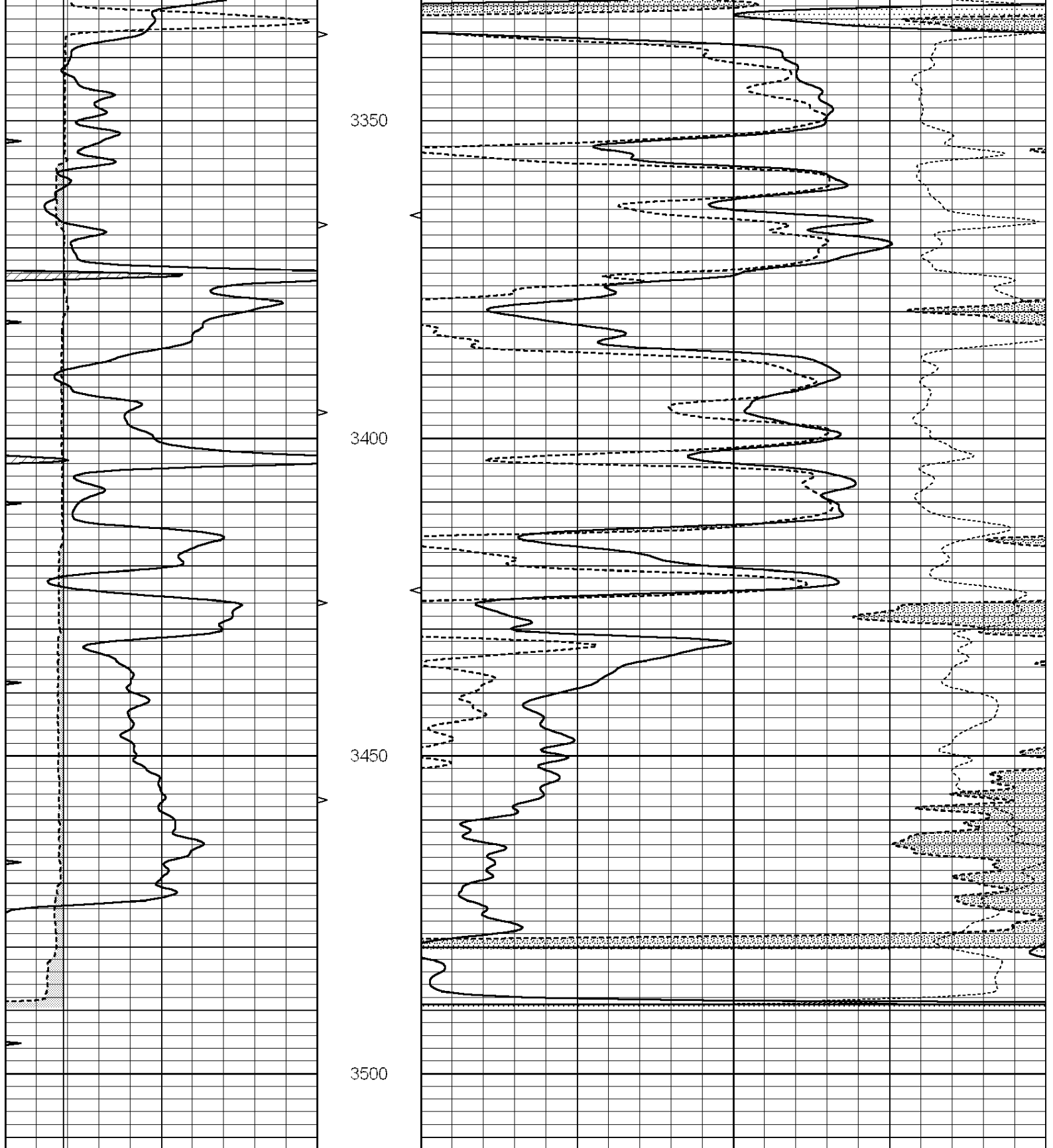


# REPEAT SECTION

Database File: 3750ddn.db  
 Dataset Pathname: pass3.6  
 Presentation Format: den\_neu  
 Dataset Creation: Wed Aug 07 02:48:37 2019 by Calc SOC 120430  
 Charted by: Depth in Feet scaled 1:240

0	GAMMA RAY (GAPI)	150	ABHV	30	COMPENSATED DENSITY (pu)	-10
6	DCAL (in)	16	10 (ft3)	0 30	COMPENSATED NEUTRON (pu)	-10
0	MINMK	20	TBHV		-0.25 CORRECTION (g/cc)	0.25
			0 (ft3)	10		





0	GAMMA RAY (GAPI)	150	ABHV	30	COMPENSATED DENSITY (pu)	-10
6	DCAL (in)	16	10 (ft3)	0 30	COMPENSATED NEUTRON (pu)	-10
0	MINMK	20	TBHV		-0.25 CORRECTION (g/cc)	0.25
			0 (ft3)	10		

Calibration Report

Database File: 1598ddn.db  
 Dataset Pathname: pass4  
 Dataset Creation: Wed Aug 30 02:13:00 2017 by Log SOC 120430

### Dual Induction Calibration Report

Serial-Model: PROBE7-DILG  
 Surface Cal Performed: Wed Aug 30 00:06:33 2017  
 Downhole Cal Performed: Mon Jul 28 12:02:56 2008  
 After Survey Verification Performed: Mon Jul 28 12:02:56 2008

#### Surface Calibration

Loop:	Readings			References			Results	
	Air	Loop		Air	Loop		m	b
Deep	-0.014	0.629	V	0.000	400.000	mmho/m	620.000	0.000
Medium	0.039	0.728	V	0.000	464.000	mmho/m	675.000	-44.000
Internal:	Zero	Cal		Zero	Cal		m	b
Deep	0.011	0.610	V	0.000	400.000	mmho/m	667.135	-7.256
Medium	0.005	0.712	V	0.000	464.000	mmho/m	655.677	-3.102

#### Downhole Calibration

	Readings			References			Results	
	Zero	Cal		Zero	Cal		m'	b'
Deep	0.000	0.000	mmho/m	14.508	388.384	mmho/m	1.000	0.000
Medium	0.000	0.000	mmho/m	166.367	504.400	mmho/m	1.000	0.000
LL3		7.500	V		1400.000	Ohm-m		
		0.000	V		20.000	Ohm-m		
		-7.200	V		4000.000	mmho-m		

#### After Survey Verification

	Readings			Targets			Results	
	Zero	Cal		Zero	Cal		m'	b'
Deep	0.000	0.000	mmho/m	0.000	0.000	mmho/m	0.000	0.000
Medium	0.000	0.000	mmho/m	0.000	0.000	mmho/m	0.000	0.000
LL3		1.000	Ohm-m		1.000	Ohm-m		
		0.000	Ohm-m		0.000	Ohm-m		
		1.000	mmho-m		1.000	mmho-m		

### Litho Density Calibration Report

Serial: 002 Model: PRB

#### Master Calibration

Performed Mon Aug 21 11:27:42 2017

	Background	Magnesium	Aluminum	Sandstone	
Window 1	837.1	10632.5	2945.1	12110.1	cps
Window 2	772.0	9117.4	2570.1	10197.3	cps
Window 3	631.7	4669.0	1481.9	5042.9	cps
Window 4	187.0	187.5	185.9	189.9	cps
Long Space	0.0	8345.4	1798.1	9425.3	cps
Short Space	1.1	1927.9	1285.9	2050.2	cps
Rho		1.7100	2.5960	1.3800	g/cc
Pe		0.0000	2.5700	1.5500	
Rib Angle	: 45.2	Rib Slope	: 1.008	Density/Spine Ratio	: 0.558
Spine Angle	: 75.2	Spine Slope	: 3.790	Spine Intercept	: -19.6

#### Before Survey Verification

Performed Wed Dec 31 18:00:00 1969

Window 1	0.0	0.0	0.0	0.0	cps
Window 2	0.0	0.0	0.0	0.0	cps
Window 3	0.0	0.0	0.0	0.0	cps
Window 4	0.0	0.0	0.0	0.0	cps

Window 3	0.0	0.0	0.0	0.0	cps
Window 4	0.0	0.0	0.0	0.0	cps
Long Space	0.0	0.0	0.0	0.0	cps
Short Space	0.0	0.0	0.0	0.0	cps
Measured Rho		0.0000	0.0000	0.0000	g/cc
Measured Correction		0.0000	0.0000	0.0000	g/cc
Measured Pe			0.0000	0.0000	

After Survey Verification

Performed Wed Dec 31 18:00:00 1969

Window 1	0.0	0.0	0.0	0.0	cps
Window 2	0.0	0.0	0.0	0.0	cps
Window 3	0.0	0.0	0.0	0.0	cps
Window 4	0.0	0.0	0.0	0.0	cps
Long Space	0.0	0.0	0.0	0.0	cps
Short Space	0.0	0.0	0.0	0.0	cps
Measured Rho		0.0000	0.0000	0.0000	g/cc
Measured Correction		0.0000	0.0000	0.0000	g/cc
Measured Pe			0.0000	0.0000	

### Compensated Neutron Calibration Report

Serial Number: 070808  
Tool Model: Probe

#### PRE-SURVEY VERIFICATION

Detector	Readings	Measured	Target
Short Space	cps		
Long Space	cps	pu	pu

#### POST-SURVEY VERIFICATION

Detector	Readings	Measured	Target
Short Space	cps		
Long Space	cps	pu	pu

### Gamma Ray Calibration Report

Serial Number: 070558  
Tool Model: OPEN\_GR  
Performed: Wed May 31 00:09:32 2017

Calibrator Value: 1.0 GAPI

Background Reading: 0.0 cps  
Calibrator Reading: 1.0 cps

Sensitivity: 0.2800 GAPI/cps