



**MICRO LOG**

Company C. G. OIL COMPANY, LLC.  
 Well WIL #1  
 Field AIR BASE  
 County ELLIS  
 State KANSAS

Company C. G. OIL COMPANY, LLC.  
 Well WIL #1  
 Field AIR BASE  
 County ELLIS State KANSAS

Location: API # : 15-051-26964-0000  
 2310' FNL & 2310' FEL  
 SW - SW - NE/4  
 SEC 22 TWP 13S RGE 16W  
 Permanent Datum GROUND LEVEL Elevation 1939  
 Log Measured From KELLY BUSHING 8' A.G.L.  
 Drilling Measured From KELLY BUSHING  
 Other Services CDL/CNL DIL  
 Elevation K.B. 1947 D.F. 1945 G.L. 1939

Date	8/7/19		
Run Number	TWO		
Depth Driller	3510		
Depth Logger	3506		
Bottom Logged Interval	3504		
Top Log Interval	2800		
Casing Driller	8 5/8" @ 1067'		
Casing Logger	1066		
Bit Size	7 7/8"		
Type Fluid in Hole	CHEMICAL MUD	CHLORIDES 12,500 PPM	
Density / Viscosity	9.1/49		
pH / Fluid Loss	9.5/11.4		
Source of Sample	FLOWLINE		
Rim @ Meas. Temp	.290 @ 85F		
Rmf @ Meas. Temp	.218 @ 85F		
Rmc @ Meas. Temp	.348 @ 85F		
Source of Rmf / Rmc	MEASUREMENT		
Rim @ BHT	.220 @ 112F		
Time Circulation Stopped	3.5 HOURS		
Time Logger on Bottom	4:15 A.M.		
Maximum Recorded Temperature	112F		
Equipment Number	922339		
Location	HAYS, KANSAS		
Recorded By	JEFF LUEBBERS		
Witnessed By	ROGER FISHER	RON SCHMIDTBERGER	TERRY PLESKER

<<< Fold Here >>>

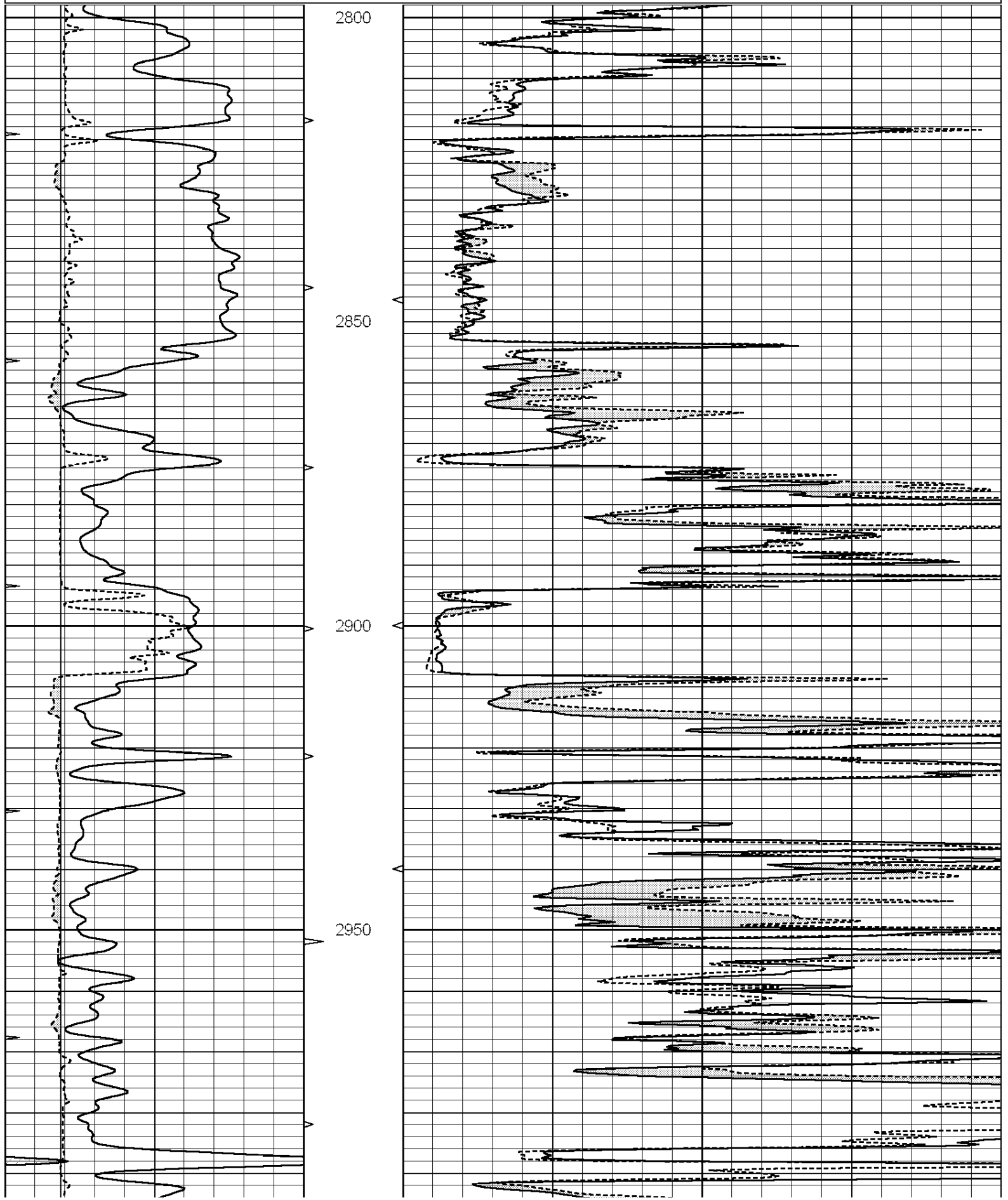
All interpretations are opinions based on inferences from electrical or other measurements and we cannot and do not guarantee the accuracy or correctness of any interpretation, and we shall not, except in the case of gross or willful negligence on our part, be liable or responsible for any loss, costs, damages, or expenses incurred or sustained by anyone resulting from any interpretation made by any of our officers, agents or employees. These interpretations are also subject to our general terms and conditions set out in our current Price Schedule.

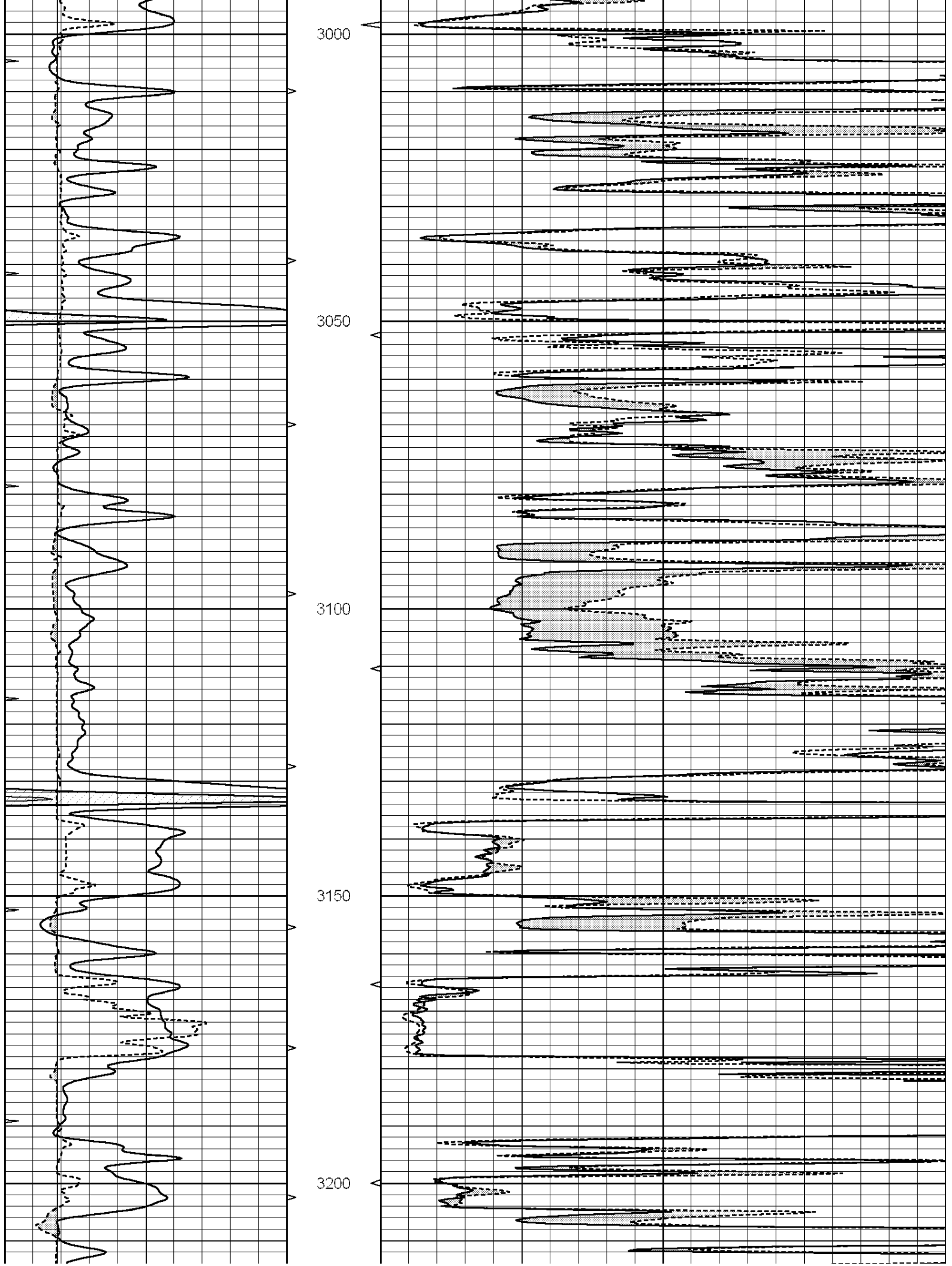
**Comments**

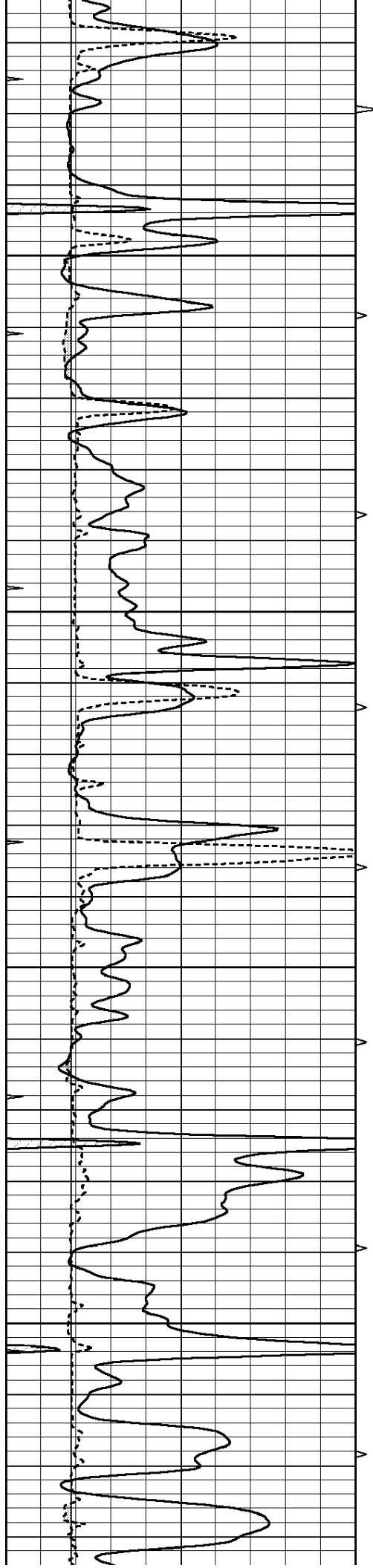
THANK YOU FOR USING ELI WIRELINE HAYS, KANSAS (785) 628-6395  
 DIRECTIONS  
 VICTORIA & I-70, 3N. TO "FAIRGROUND RD.", 3 1/2E., S. INTO @TANK BATTERY

Database File: 3750ddn.db  
 Dataset Pathname: pass8.3  
 Presentation Format: micro  
 Dataset Creation: Wed Aug 07 05:11:49 2019  
 Charted by: Depth in Feet scaled 1:240

0	GAMMA RAY (GAPI)	150	ABHV	0	MEL1.5 (Ohm-m)	20
6	CALIPER (in)	16	10 (ft3)	0 0	MEL 20 (Ohm-m)	20
0	MINMK	20	TBHV			
			0 (ft3)	10		





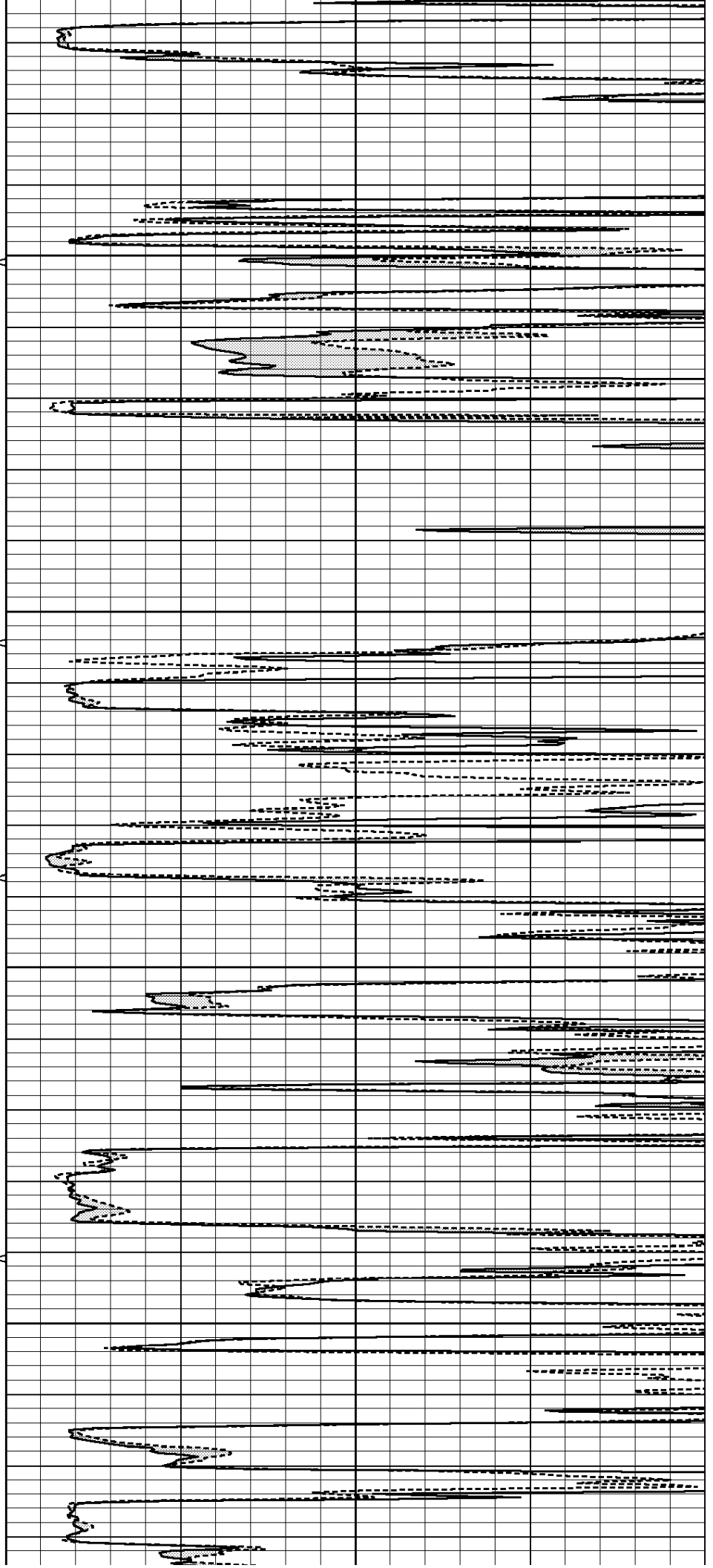


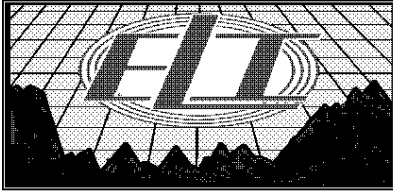
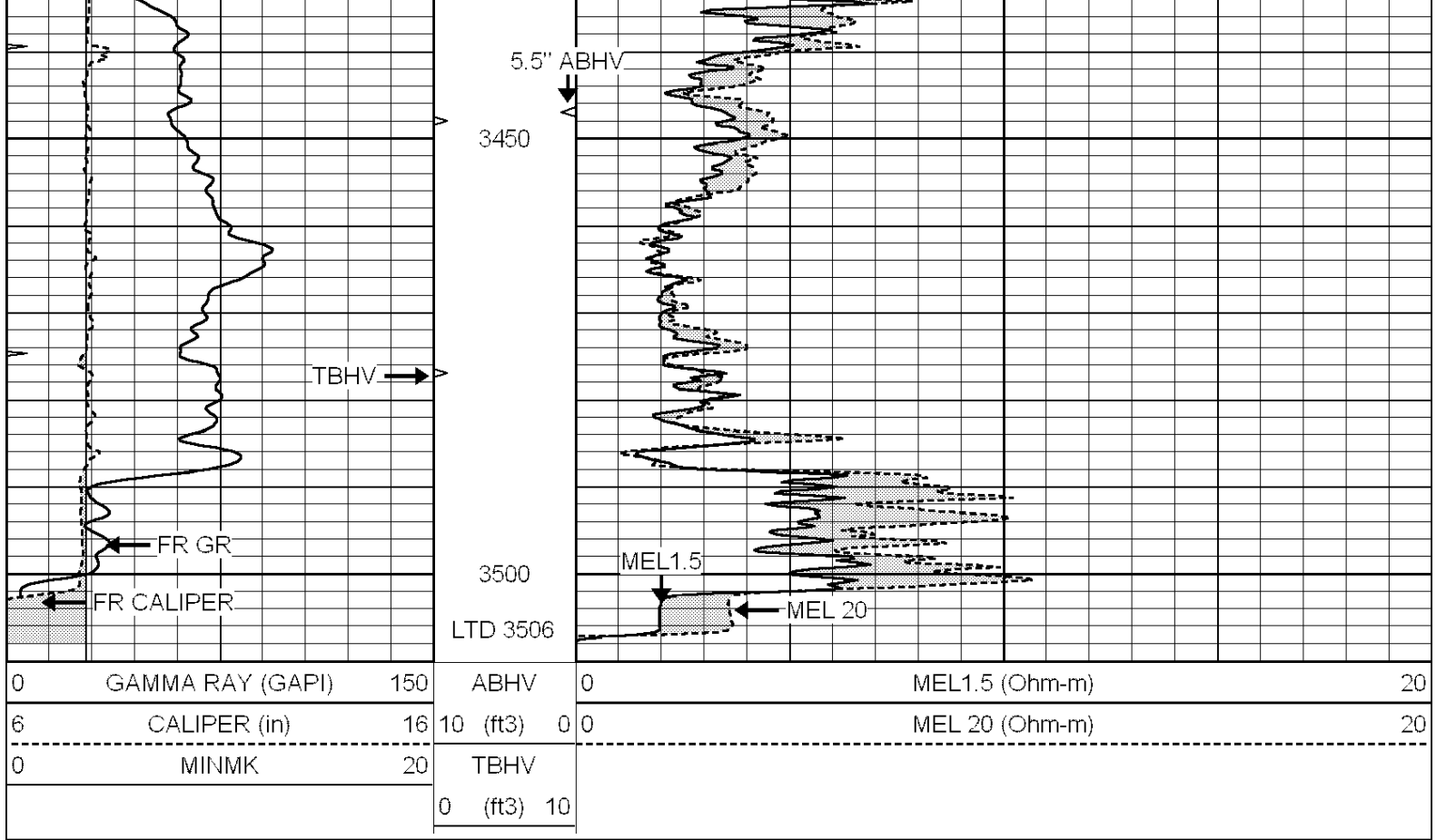
3250

3300

3350

3400

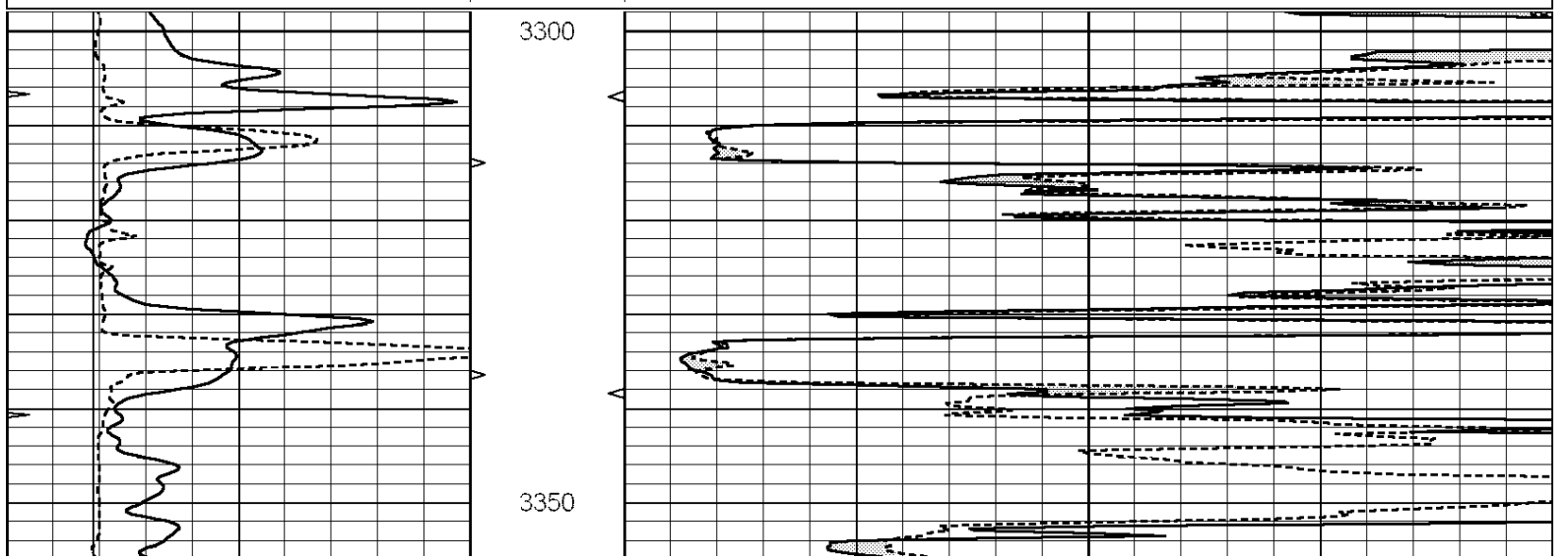


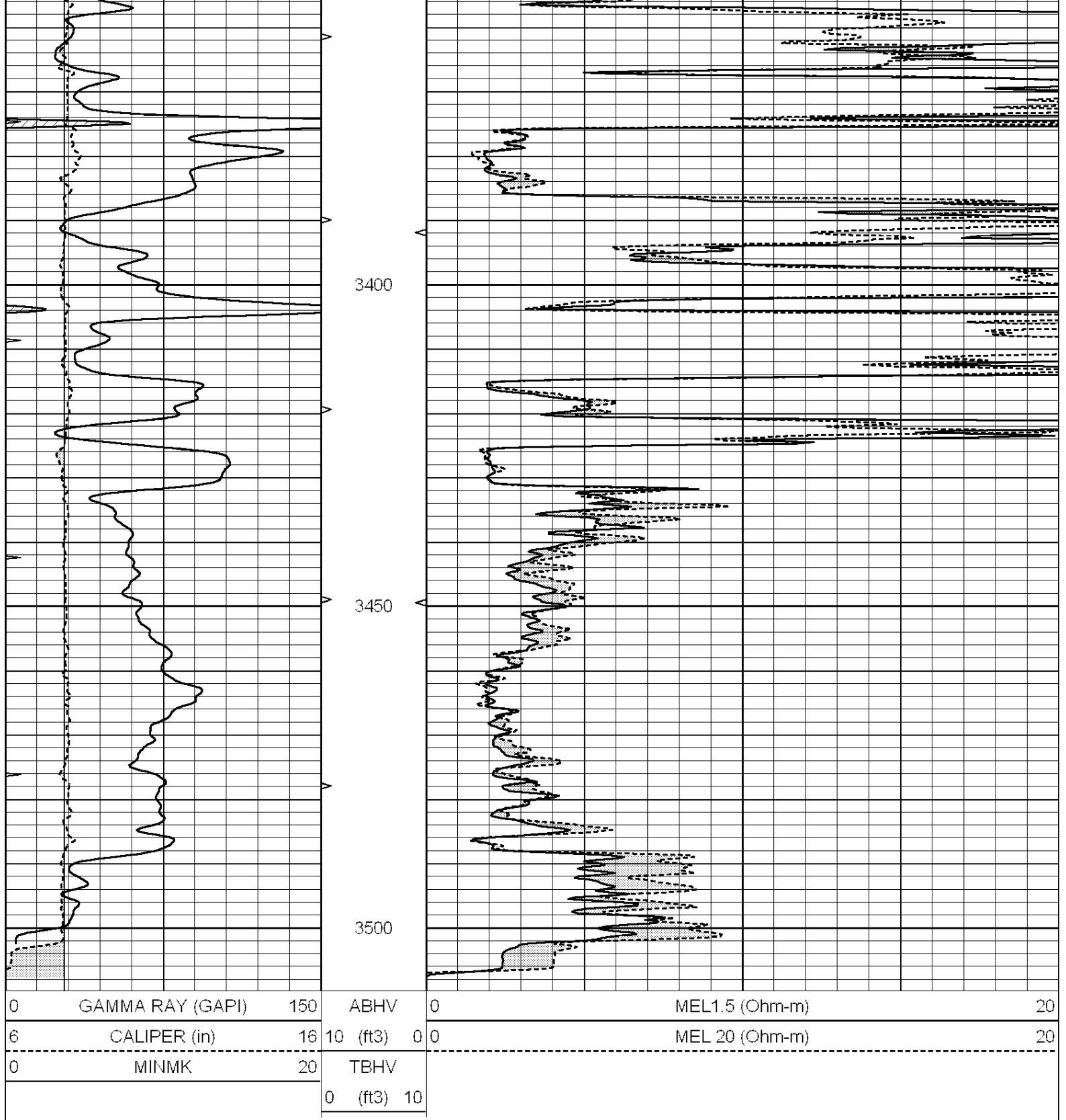


# REPEAT SECTION

Database File: 3750ddn.db  
 Dataset Pathname: pass7.1  
 Presentation Format: micro  
 Dataset Creation: Wed Aug 07 04:26:33 2019 by Calc SOC 120430  
 Charted by: Depth in Feet scaled 1:240

0	GAMMA RAY (GAPI)	150	ABHV	0	MEL1.5 (Ohm-m)	20
6	CALIPER (in)	16	10 (ft3)	0	MEL 20 (Ohm-m)	20
0	MINMK	20	TBHV			
			0 (ft3)	10		





Calibration Report

Database File: 3750ddn.db  
 Dataset Pathname: pass8.3  
 Dataset Creation: Wed Aug 07 05:11:49 2019

MICRO Calibration Report

Serial Number: 070911  
 Tool Model: ProbeN  
 Performed: Wed Aug 07 04:29:55 2019

Caliper Calibration: Gain=5.867      Offset=1.333

References	Low Cal	High Cal
Readings	7.200	16.000
	1.000	2.500
1.5" Calibration:	Gain=20.000	Offset=0.000
References	Low Cal	High Cal
Readings	0.000	20.000
	0.001	1.240
2" Calibration:	Gain=62.000	Offset=-2.500
References	Low Cal	High Cal
Readings	0.000	20.000
	0.001	1.076
Gamma Ray Calibration Report		
Serial Number:	070559	
Tool Model:	OPEN_GR	
Performed:	Sun Jul 28 03:01:32 2019	
Calibrator Value:	1.0	GAPI
Background Reading:	0.0	cps
Calibrator Reading:	1.0	cps
Sensitivity:	0.2400	GAPI/cps