



DUAL COMP POROSITY LOG

Company GREAT PLAINS ENERGY, INC.
 Well SAUVAGE #11
 Field SWEDE HOLLOW
 County DECATUR
 State KANSAS

Company GREAT PLAINS ENERGY, INC.
 Well SAUVAGE #11
 Field SWEDE HOLLOW
 County DECATUR State KANSAS

Location: API #: 15-039-21265-00-00
 550' FSL & 900' FEL
 SEC 26 TWP 4S RGE 30W
 Permanent Datum GROUND LEVEL Elevation 2841'
 Log Measured From KELLY BUSHING
 Drilling Measured From KELLY BUSHING
 Other Services DIL/MEL
 K.B. 2848'
 D.F. N/A
 G.L. 2841'

Date	10/14/2019						
Run Number	ONE						
Type Log	CNL/CDL						
Depth Driller	4200'						
Depth Logger	4202'						
Bottom Logged Interval	4173'						
Top Logged Interval	3200'						
Type Fluid In Hole	CHEMICAL						
Salinity, PPM CL	1800						
Density	8.9						
Level	FULL						
Max. Rec. Temp. F	118						
Operating Rig Time	3 HOURS						
Equipment -- Location	P-24 HAYS						
Recorded By	D. SCHMIDT						
Witnessed By	CLAYTON ERICKSON						
Borehole Record							
Run No.	Bit	From	To	Size	Wgt.	From	To
ONE	12.25"	0'	369'	8.625"	23#	0'	369'
TWO	7.875"	369'	TD				
Casing Record							

<<< Fold Here >>>

All interpretations are opinions based on inferences from electrical or other measurements and Pioneer Wireline Services, LLC cannot and does not guarantee the accuracy or correctness of any interpretation, and Pioneer Wireline Services, LLC will not be liable or responsible for any loss, costs, damages, or expenses incurred or sustained by anyone resulting from any interpretation made by any of our officers, agents or employees.

Comments

N/A DENOTES NOT AVAILABLE OR NON-APPLICABLE.

OBERLIN,
 10 SOUTH TO I LANE (RD 352),
 6 1/2 WEST, 1 SOUTH, 1/2 WEST,
 NORTH INTO

Log Measured From: KELLY BUSHING 7 Ft. Above Permanent Datum

THANK YOU FOR USING PIONEER ENERGY SERVICES
www.pioneerenergy.com 785-625-3858

Your Pioneer Energy Services Crew		This Log Record Was Witnessed By	
Engineer: D. SCHMIDT	Operator:	Primary Witness: CLAYTON ERICKSON	Secondary Witness:
Operator:	Operator:	Secondary Witness:	Secondary Witness:
Operator:		Secondary Witness:	

Sensor	Offset (ft)	Schematic	Description	Length (ft)	O.D. (in)	Weight (lb)
GR	40.58		GR-M&W (233-M&W)	3.00	3.50	50.00
CNLSC CNSSC	37.48 36.73		CNT-M&W (207-MW)	5.50	3.50	100.00
LSD DCAL SSD	28.43 28.42 27.93		ML-PSIML (PSI-01) GO Micro log tools converted to Simplec electronics	7.58	4.00	65.00
MCAL MI MN	19.83 19.83 19.83		CDL-M&W (96-916)	8.50	4.00	250.00
RLL3F RLL3	15.80 15.80					
CILD	8.00		DIL-PSI HIGH TEMP (1039)	18.50	3.50	220.00
CILM	4.70					
SP	0.20					

Dataset: great plains_sauvage 11.db: field/well/stkml/pass3.1
 Total length: 43.08 ft
 Total weight: 685.00 lb
 O.D.: 4.00 in

Log Variables

DatabaseC:\ProgramData\Warrior\Data\great plains_sauvage 11.db
 Dataset field/well/stkml/pass3.1/_vars_

Top - Bottom

A	BOREID in	BOTTEMP degF	CASEOD in	CASETHCK in	FLUIDDEN g/cc	M	MATRXDEN g/cc
1	7.875	100	5.5	0	1	2	2.71
NPORSEL	PERFS	SNDERR mmho/m	SNDERRM mmho/m	SPSHIFT mV	SRFTEMP degF	SZCOR	TDEPTH ft
Limestone	0	0	0	460	0	Off	0

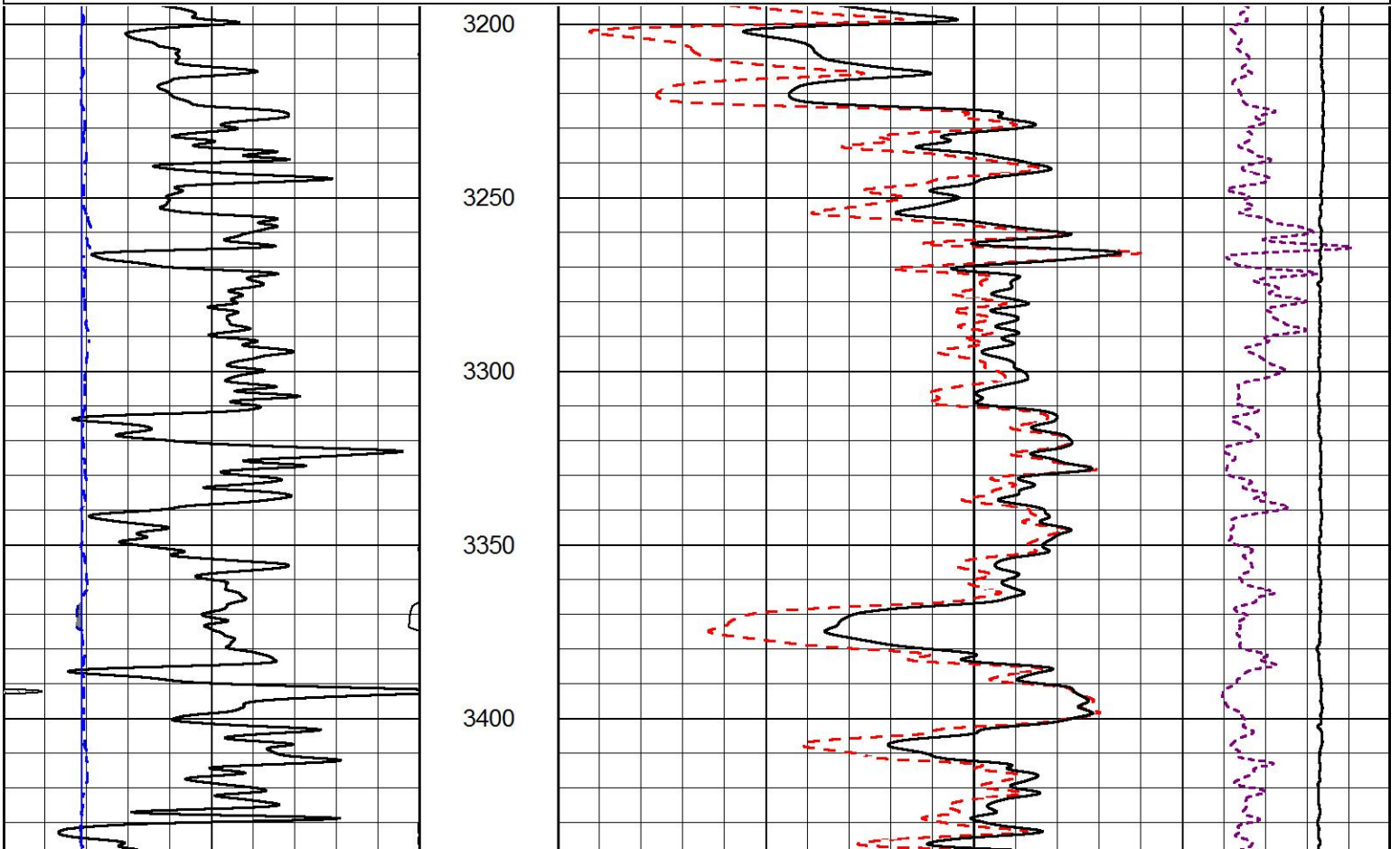


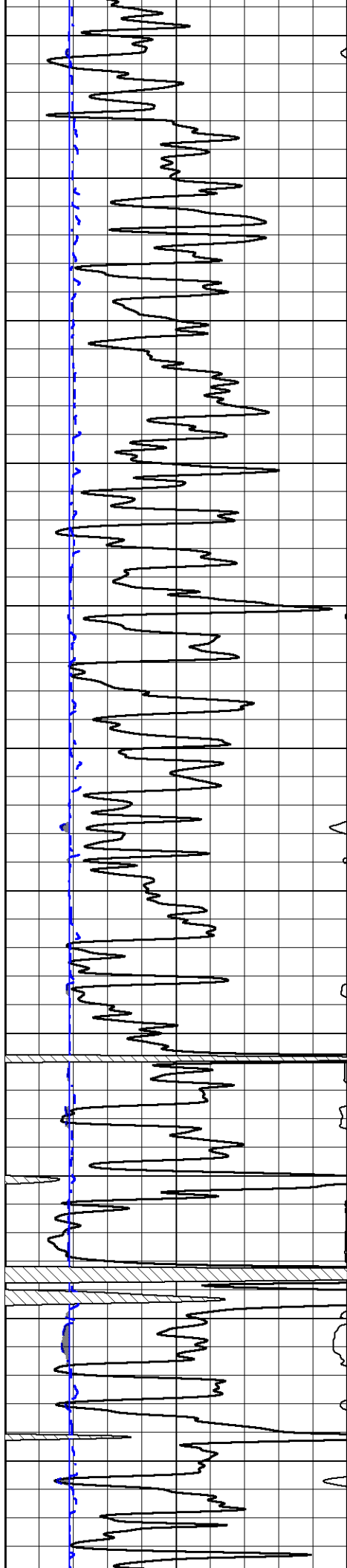
MAIN PASS

Database File great plains_sauvage 11.db
 Dataset Pathname stkml/pass3.1
 Presentation Format _cdl
 Dataset Creation Mon Oct 14 21:12:16 2019
 Charted by Depth in Feet scaled 1:600

0	GAMMA RAY (GAPI)	150
6	DCAL (in)	16

COMPENSATED DENSITY (2.71 MA)	
30	(pu) -10
2	BULK DENSITY (g/cc) 3
15000	LINE TENSION (lb) 0
-0.25	CORRECTION (g/cc) 0.25





3450

3500

3550

3600

3650

3700

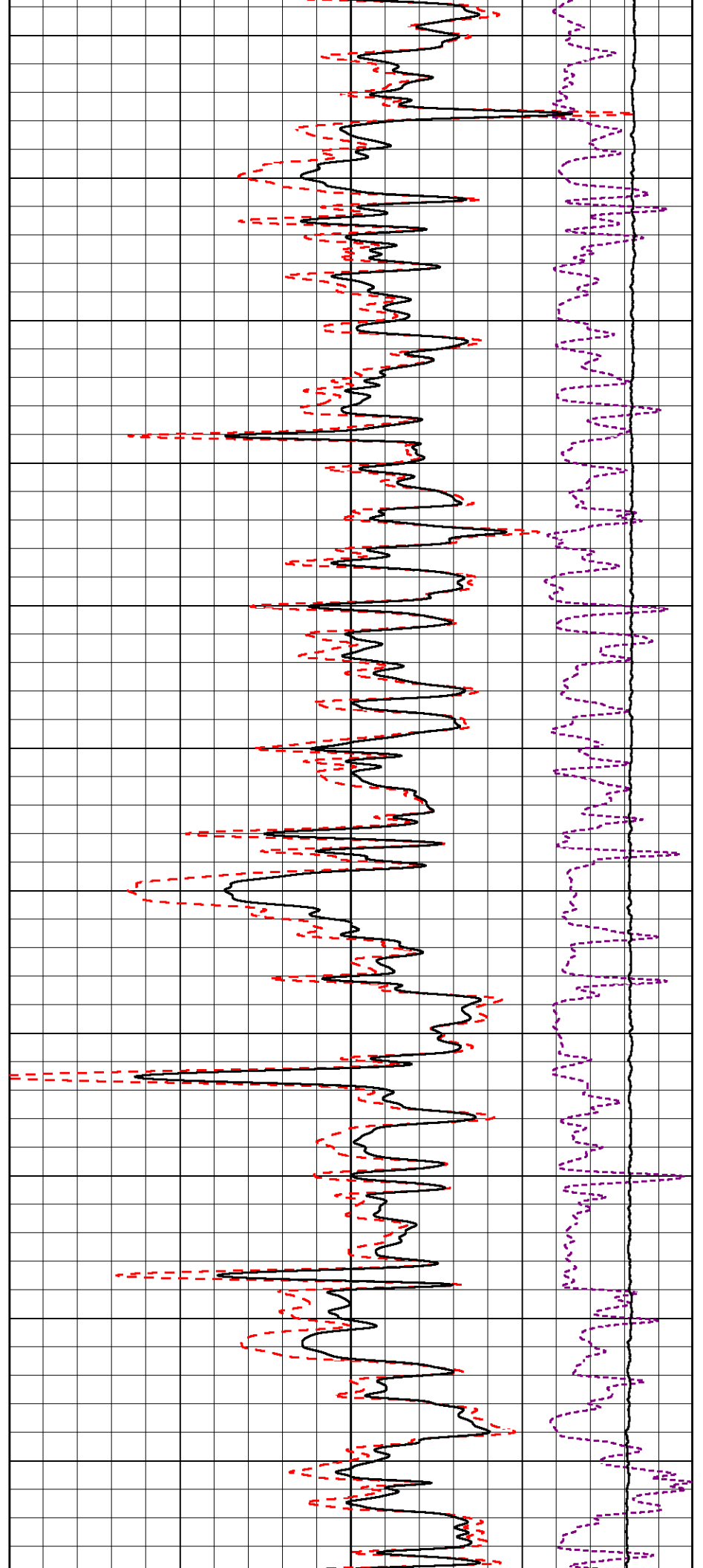
3750

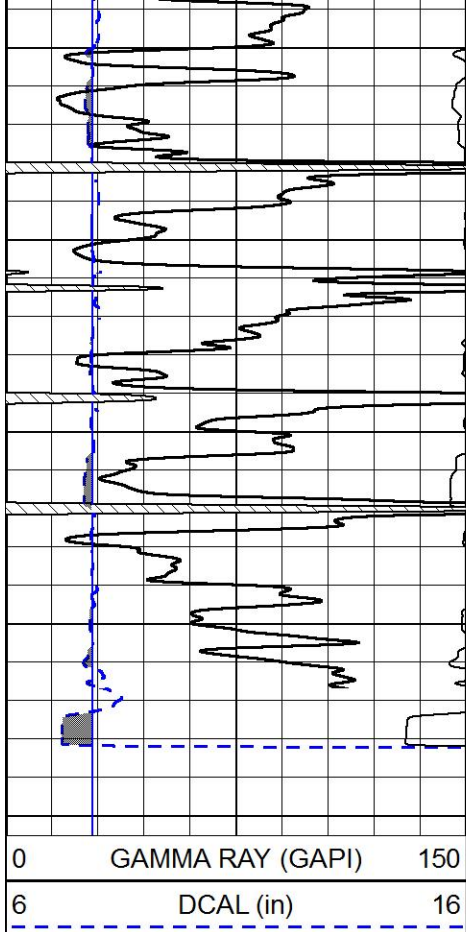
3800

3850

3900

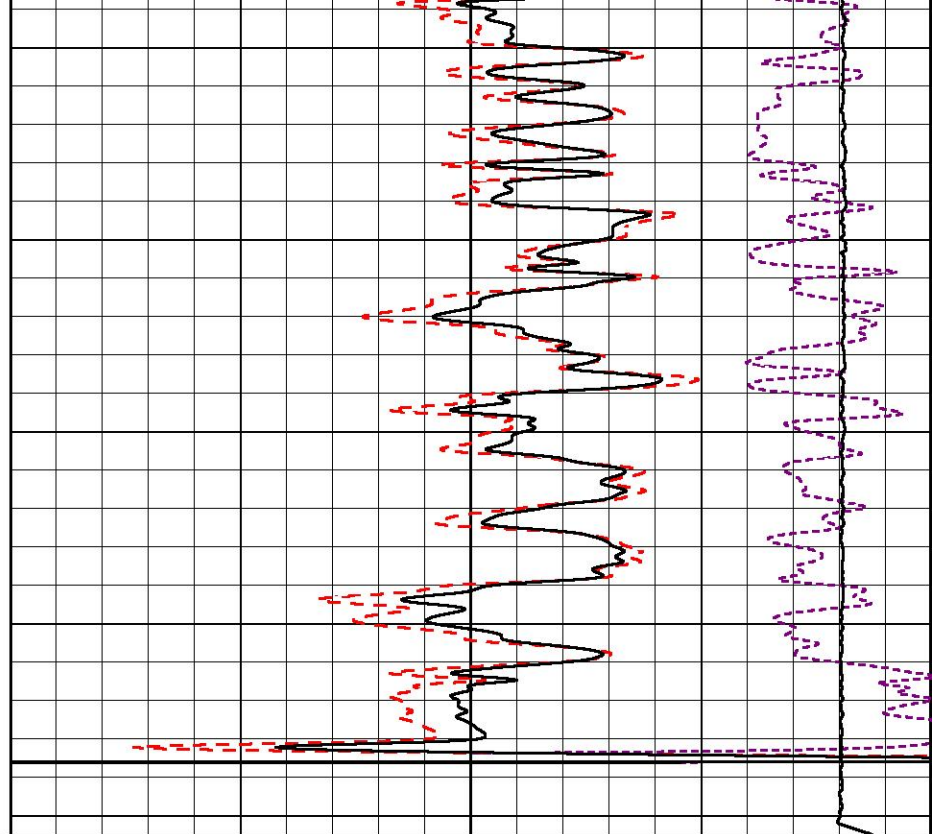
3950





4000
4050
4100
4150
4200

0 GAMMA RAY (GAPI) 150
6 DCAL (in) 16



COMPENSATED DENSITY
(2.71 MA)

30 (pu) -10

2 BULK DENSITY (g/cc) 3

15000 LINE TENSION (lb) 0

-0.25 CORRECTION (g/cc) 0.25



MAIN PASS

Database File great plains_sauvage 11.db
Dataset Pathname stkml/pass3.1
Presentation Format _CNDLS~1
Dataset Creation Mon Oct 14 21:12:16 2019
Charted by Depth in Feet scaled 1:240

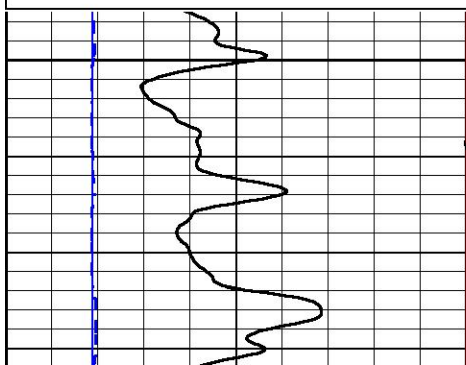
0 GAMMA RAY (GAPI) 150
6 DCAL (in) 16

30 CNLS (pu) -10

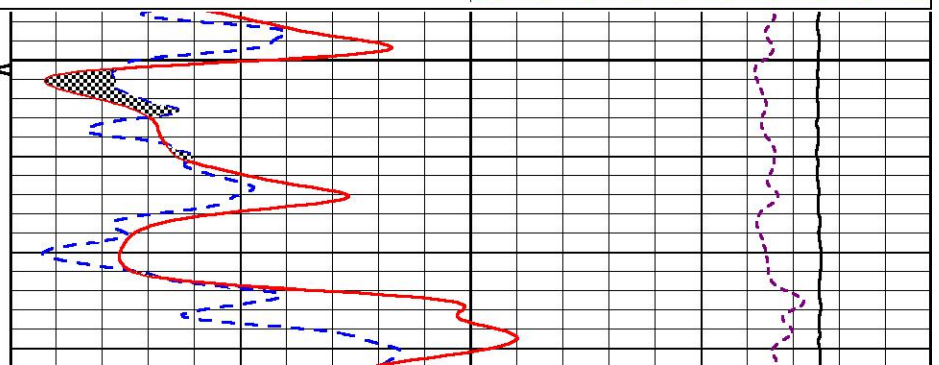
30 DPOR (pu) -10

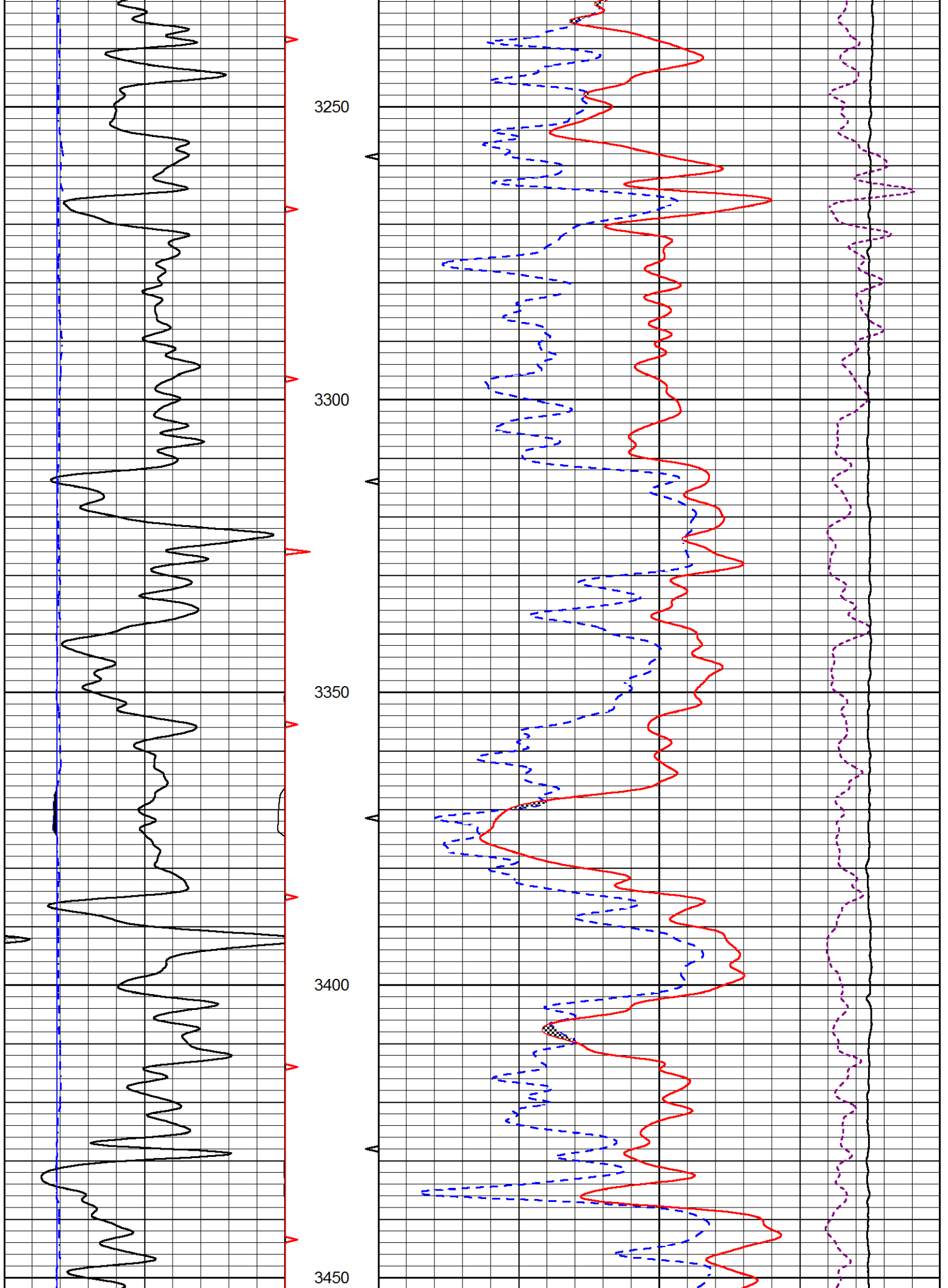
10000 LINE TENSION (lb) 0

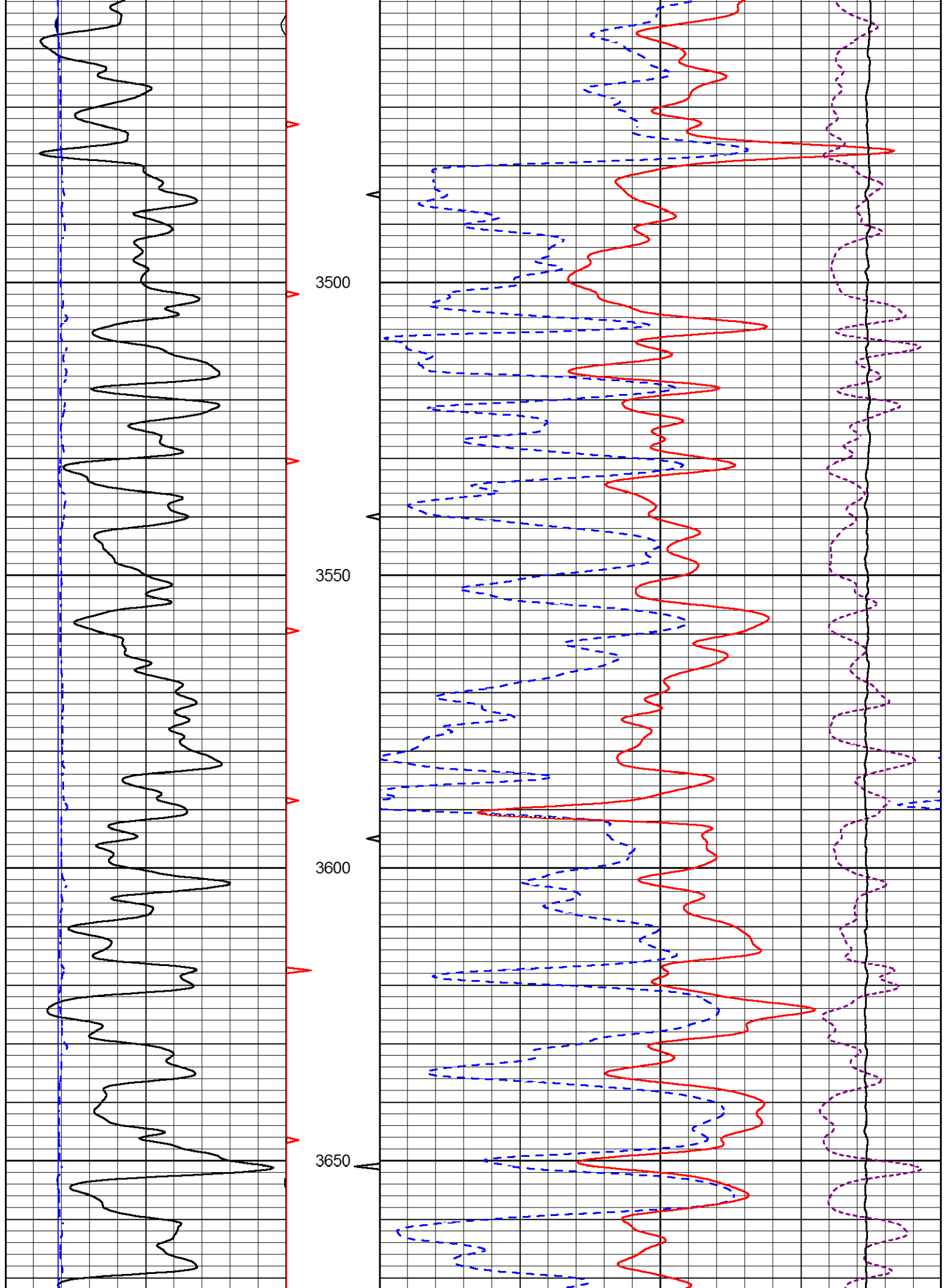
-0.25 CORRECTION (g/cc) 0.25

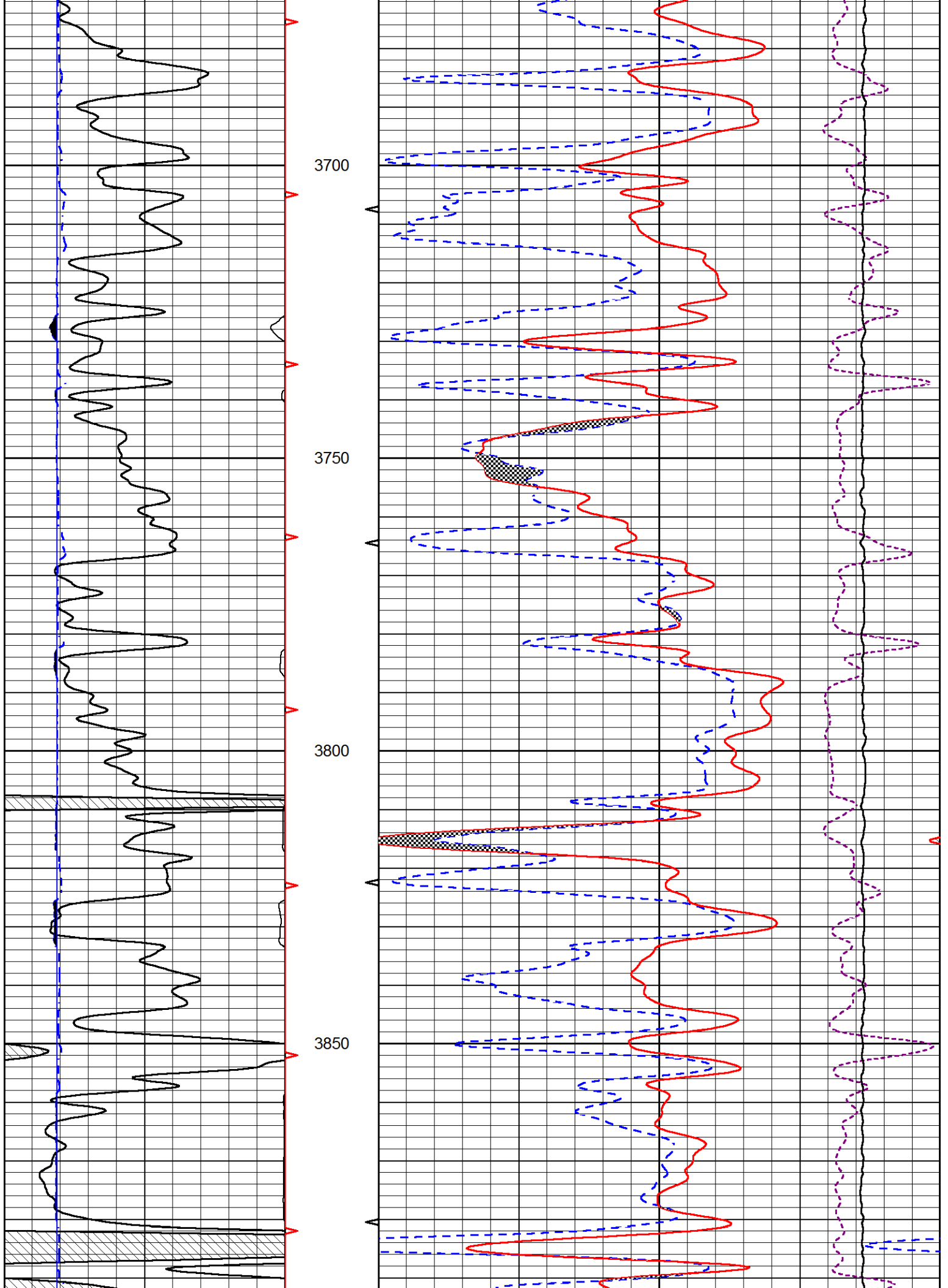


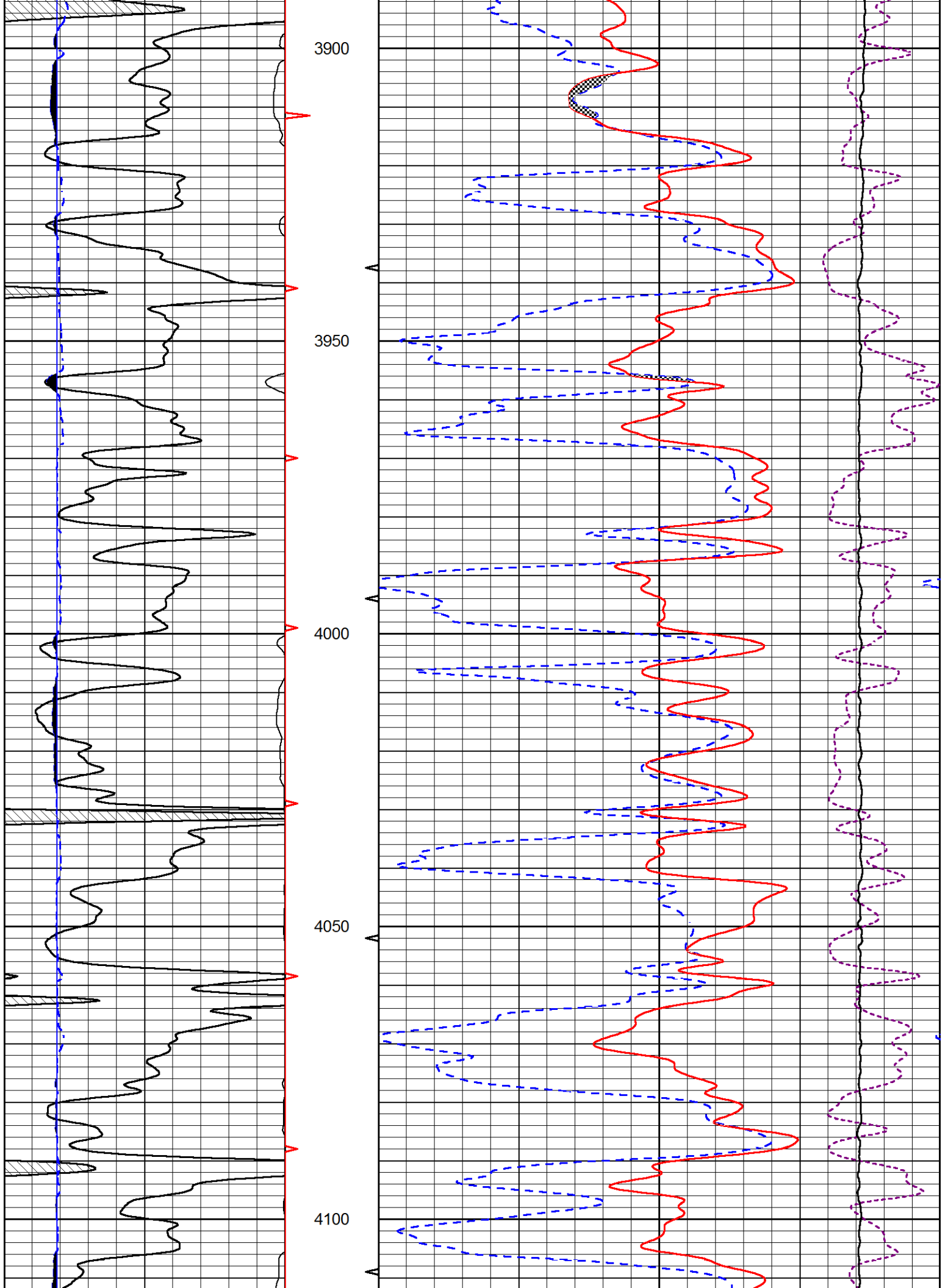
3200

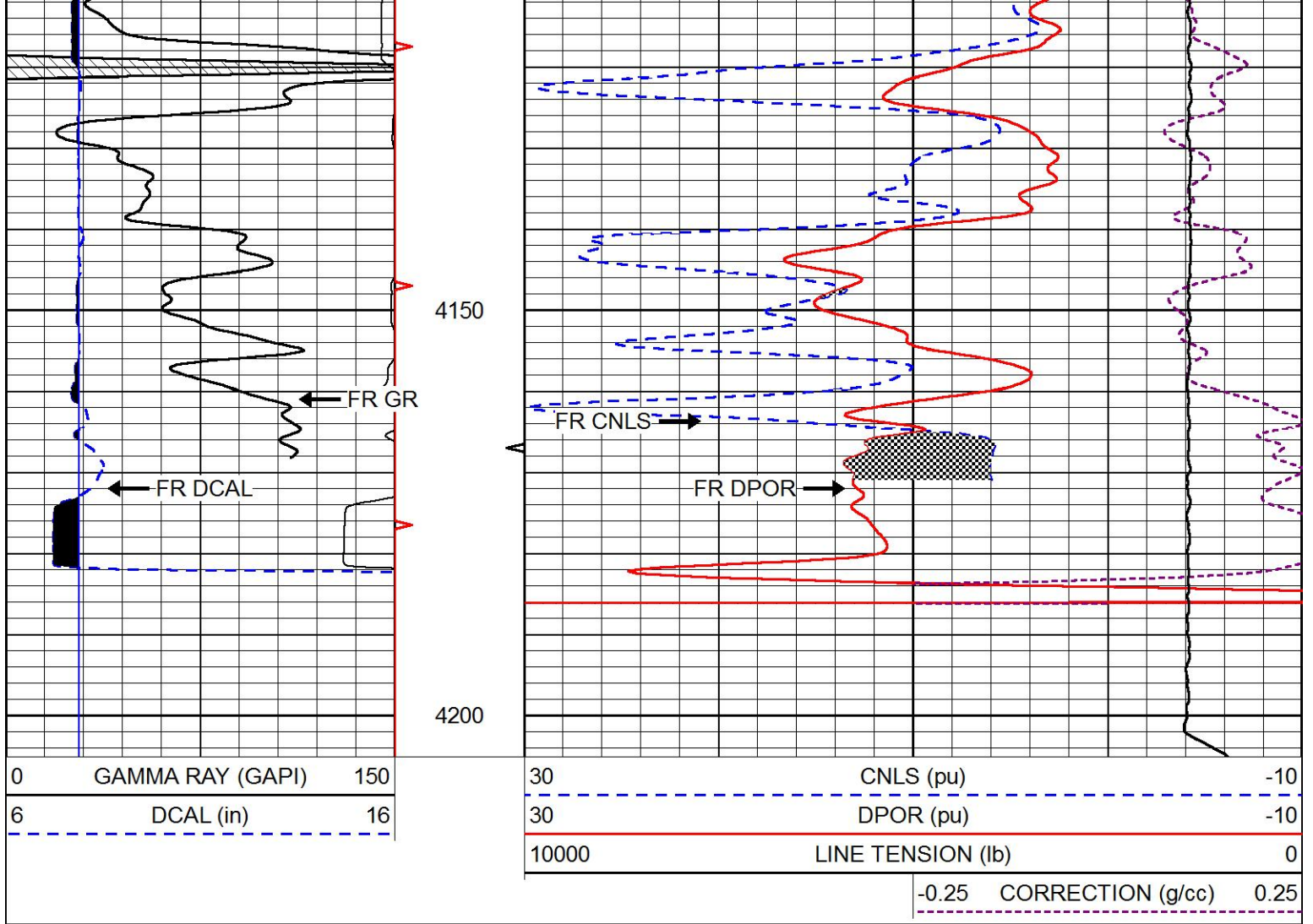






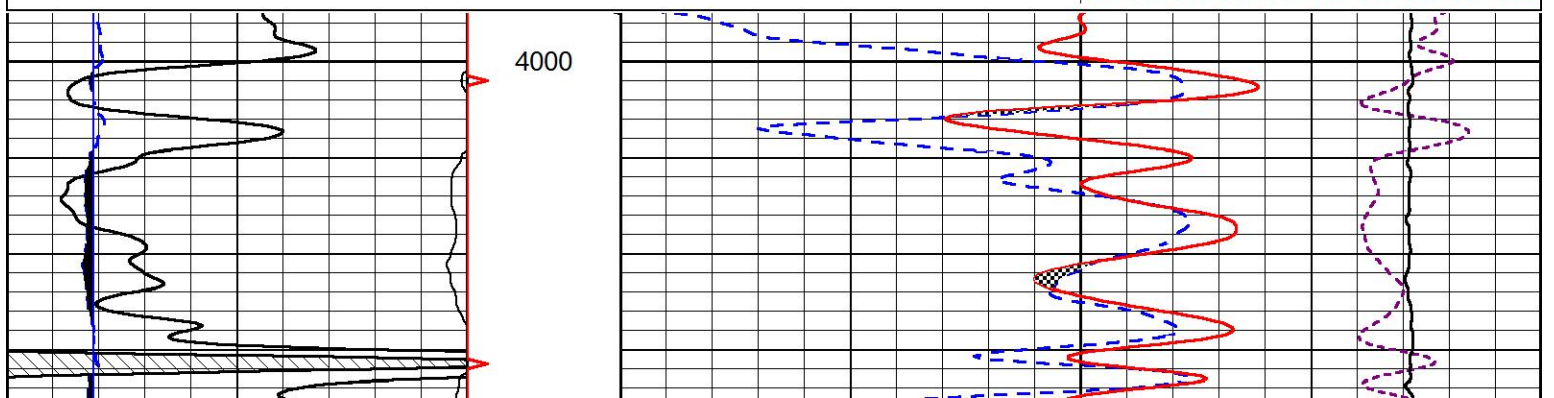
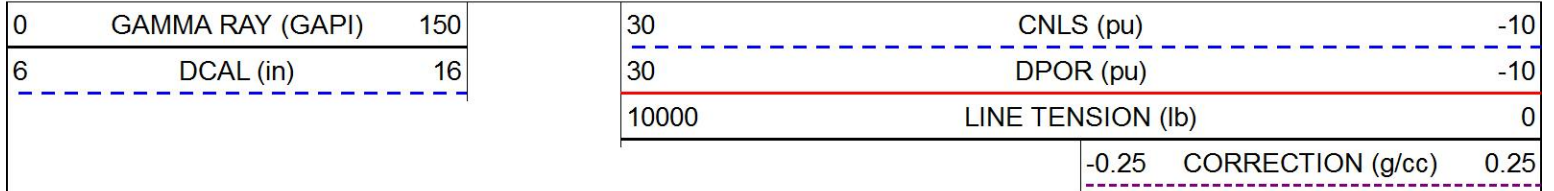


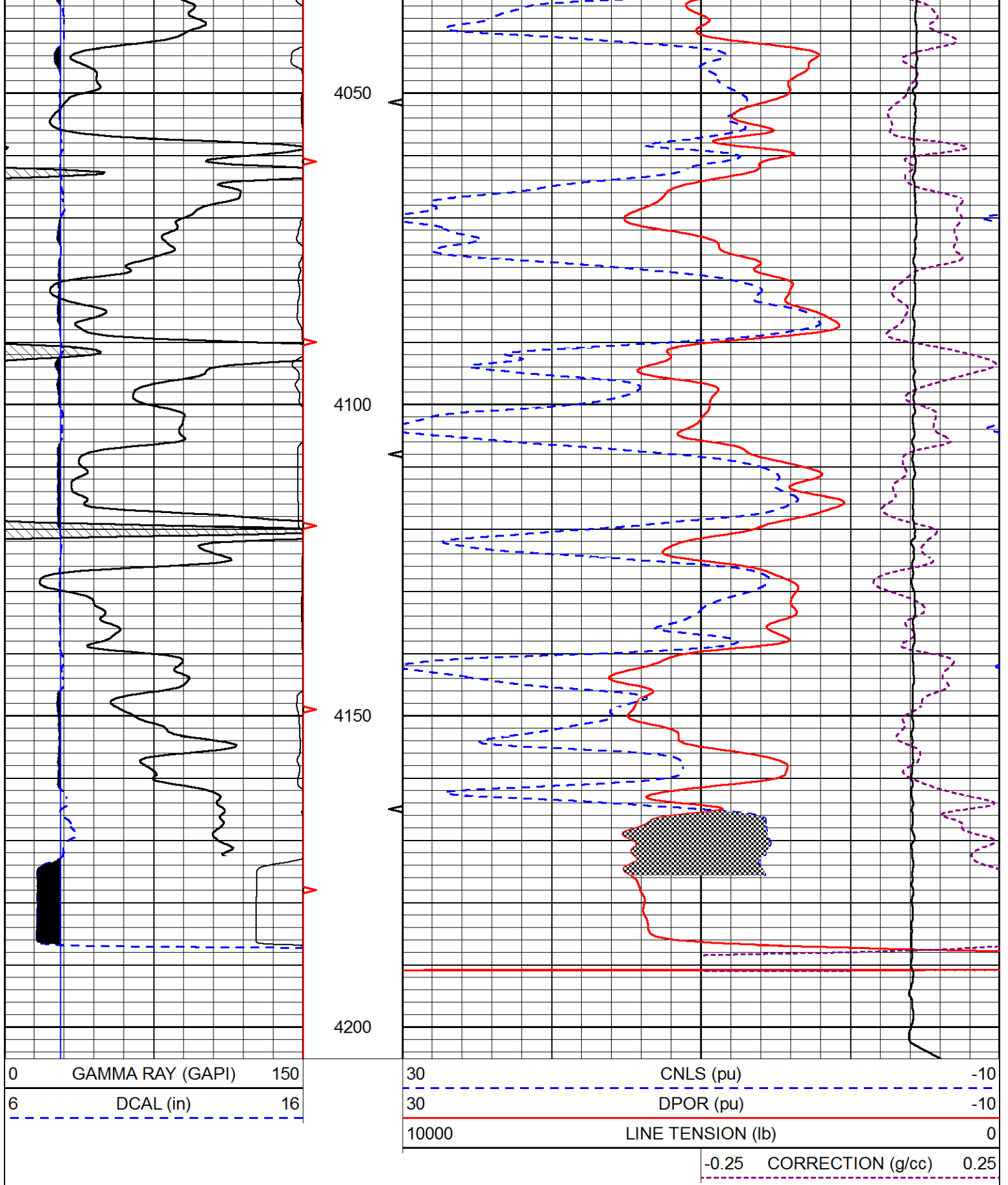




REPEAT SECTION

Database File great plains_sauvage 11.db
 Dataset Pathname stkml/pass2.1
 Presentation Format _CNDLS~1
 Dataset Creation Mon Oct 14 21:11:27 2019
 Charted by Depth in Feet scaled 1:240





Calibration Report

Database File great plains_sauvage 11.db
 Dataset Pathname stkml/pass3.1
 Dataset Creation Mon Oct 14 21:12:16 2019

Dual Induction Calibration Report

Serial-Model:
Calibration Performed:

1039-PSI HIGH TEMP
Sat Sep 28 21:39:07 2019

Loop:	Readings		References			Results	
	Air	Loop	Air	Loop		Gain	Offset
Deep	167.000	835.000	0.000	255.800	mmho/m	0.470	-41.000
Medium	0.000	1348.000	142.000	255.800	mmho/m	0.360	-15.000

Compensated Density Calibration Report

Serial-Model: 96-916-M&W
Source / Verifier: 16955B / 2ci
Master Calibration Performed: Sat Oct 12 17:38:31 2019

Master Calibration

	Density		Far Detector	Near Detector	
Magnesium	1.755	g/cc	8943.64	10054.60	cps
Aluminum	2.650	g/cc	1595.61	6242.82	cps
Spine Angle = 74.54			Density/Spine Ratio = 0.500		
	Size		Reading		
Small Ring	6.00	in	1.75		
Large Ring	15.00	in	1.40		

Microlog Calibration Report

Serial-Model: PSI-01-PSIML
Performed: Thu Aug 01 07:57:13 2019

	Readings		References			Results	
	Zero	Cal	Zero	Cal		m	b
Normal	0.0000	1.0000	0.0000	1.0000	Ohm-m	19500.0000	-1.8000
Inverse	0.0000	1.0000	0.0000	1.0000	Ohm-m	18000.0000	-1.3000
Caliper	1.0001	1.1397	6.5000	18.5000	in	70.0000	-64.4250

Compensated Neutron Calibration Report

Serial Number: 207-MW
Tool Model: M&W
Calibration Performed: WED FEB 13 10:30:30 2019

Detector	Readings	Target	Normalization
Short Space	6240.00 cps	1000.00 cps	1.6025
Long Space	460.00 cps	1000.00 cps	1.9500

Gamma Ray Calibration Report

Serial Number: 233-M&W
Tool Model: M&W
Calibration Performed: Fri Feb 07 01:42:40 2014

Calibrator Value: 1.0 GAPI

Background Reading:
Calibrator Reading:

0.0
1.0

cps
cps

Sensitivity:

0.5500

GAPI/cps



PIONEER
Pioneer Energy Services

Company	GREAT PLAINS ENERGY, INC.
Well	SAUVAGE #11
Field	SWEDE HOLLOW
County	DECATUR
State	KANSAS