



**GAMMA RAY
NEUTRON
COMPLETION LOG**

Company LAYMON OIL II, LLC
Well FULHAGE #48-19
Field OWL CREEK
County WOODSON
State KS

Location: 4070' FSL, 3400' FEL
SE-SW-NE-1/4 NW
AR # : 15-207-29742-00-00

Permanent Datum SEC 8 TWP 25 RGE 16
Log Measured From GL
Drilling Measured From GL

Elevation 994
K8 994
D.F. GL

Other Services

Date	11-20-19	Run Number	11M
Depth Diller	1004	Top Log Interval	0
Bottom Logged Interval	1004	Fluid Level	SURF
Type Fluid	WATER	Production Casing	2 7/8" @ TD
Max. Recorded Temp.		Estimated Cement Top	
Calculated Cement Top		Amount & Type Cement	
Drilling Contractor		Equipment Number	109
Location	THAD TRAHAN	Recorded By	THAD TRAHAN
Witnessed By	GARY SANBORN		

<<< Fold Here >>>

All interpretations are opinions based on inferences from electrical or other measurements and we cannot and do not guarantee the accuracy or correctness of any interpretation, and we shall not, except in the case of gross or willful negligence on our part, be liable or responsible for any loss, costs, damages, or expenses incurred or sustained by anyone resulting from any interpretation made by any of our officers, agents or employees. These interpretations are also subject to our general terms and conditions set out in our current Price Schedule.

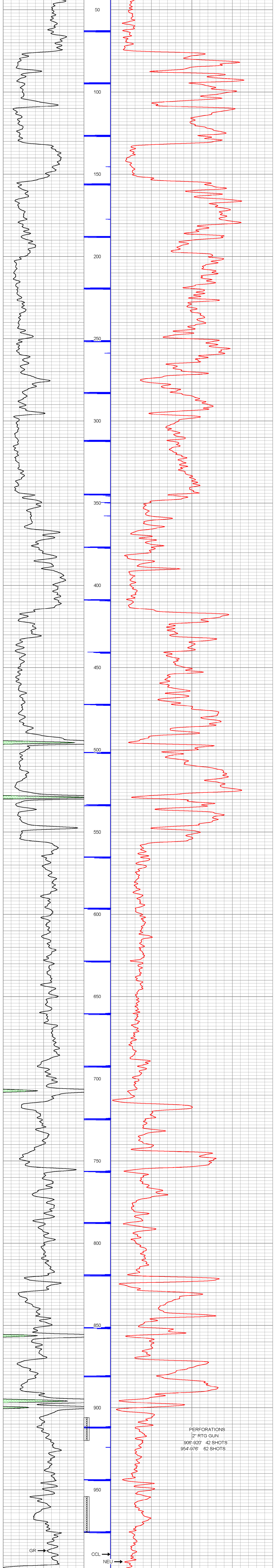
Comments

Sensor	Offset (ft)	Schematic	Description	Len (ft)	OD (in)	Wt (lb)
GR	7.59		GR-TITAN 169 (TIT169_001) Titan 1 11/16" Gamma Ray	4.75	1.69	20.00
CCL	5.05		CCL-TITAN 169 (TIT169) Titan 1 11/16" Logging CCL	1.83	1.69	7.50
NEU	0.63		NEU-TITAN (TIT801) TITAN 1 11/16" Neutron	4.33	1.69	25.00

Dataset: fulhage 48-19 db: field/well/run1/pass1
Total Length: 10.92 ft
Total Weight: 52.50 lb
O.D. 1.69 in

Database File: fulhage 48-19.db
Dataset Pathname: pass1
Presentation Format: gr-n-ccl
Dataset Creation: Wed Nov 20 13:15:35 2019 by Log Std Casedhole 09061
Charted by: Depth in Feet scaled 1:240

150 gr 300 3 CCL 05 300 NEU (cps) 1500
0 GR 150



PERFORATIONS
2' RTG GUN
906'-920' 42 SHOTS
954'-976' 62 SHOTS

150 gr 300 3 CCL 05 300 NEU (cps) 1500
0 GR 150