



MICRO LOG

Company L.D. DRILLING, INC.
Well MEADOW#1-29
Field WILDCAT
County THOMAS
State KANSAS

Company L.D. DRILLING, INC.
Well MEADOW #1-29
Field WILDCAT
County THOMAS
State KANSAS

Location: 990' FNL & 330' FWL
API #: 15-193-21060-00-00
SEC 29 TWP 8S RGE 34W
Permanent Datum GROUND LEVEL Elevation 3254
Log Measured From KELLY BUSHING 5' A.G.L.
Drilling Measured From KELLY BUSHING
Other Services CDL/CNL/DIL
Elevation K.B. 3259
D.F. 3257
G.L. 3254

Date	11/21/19
Run Number	TWO
Depth Driller	4840
Depth Logger	4839
Bottom Logged Interval	4838
Top Log Interval	3600
Casing Driller	8 5/8" @ 338
Casing Logger	338
Bit Size	7 7/8"
Type Fluid in Hole	CHEMICAL MUD
Density / Viscosity	9.4/56
pH / Fluid Loss	10.5/8.8
Source of Sample	FLOWLINE
Rm @ Meas. Temp	1.0@60
Rmt @ Meas. Temp	.75@60
Rmc @ Meas. Temp	1.2@60
Source of Rmf / Rmc	MEASURED
Rm @ BHT	.48@124
Time Circulation Stopped	2 HOURS
Time Logger on Bottom	///
Maximum Recorded Temperature	124F
Equipment Number	4010
Location	HAYS, KANSAS
Recorded By	GUS PFANENSTIEL
Witnessed By	KIM SHOEMAKER

<<< Fold Here >>>

All interpretations are opinions based on inferences from electrical or other measurements and we cannot and do not guarantee the accuracy or correctness of any interpretation, and we shall not, except in the case of gross or willful negligence on our part, be liable or responsible for any loss, costs, damages, or expenses incurred or sustained by anyone resulting from any interpretation made by any of our officers, agents or employees. These interpretations are also subject to our general terms and conditions set out in our current Price Schedule.

Comments

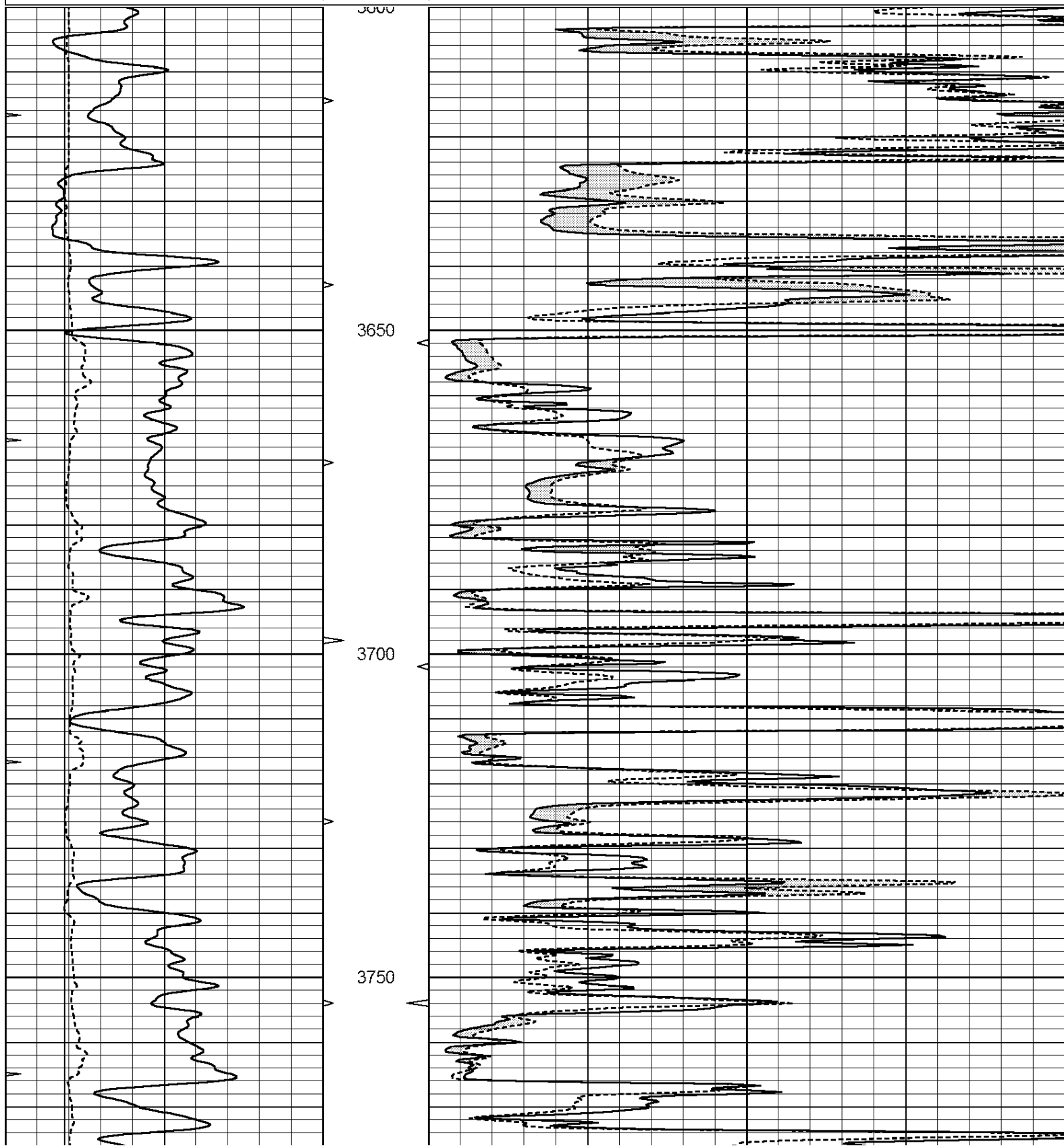
THANK YOU FOR USING ELI WIRELINE, HAYS, KS. (785) 628-6395
DIRECTIONS
SOUTH OF COLBY ON HWY 25 TO O RD.,
WEST 4 3/4, SOUTH INTO.

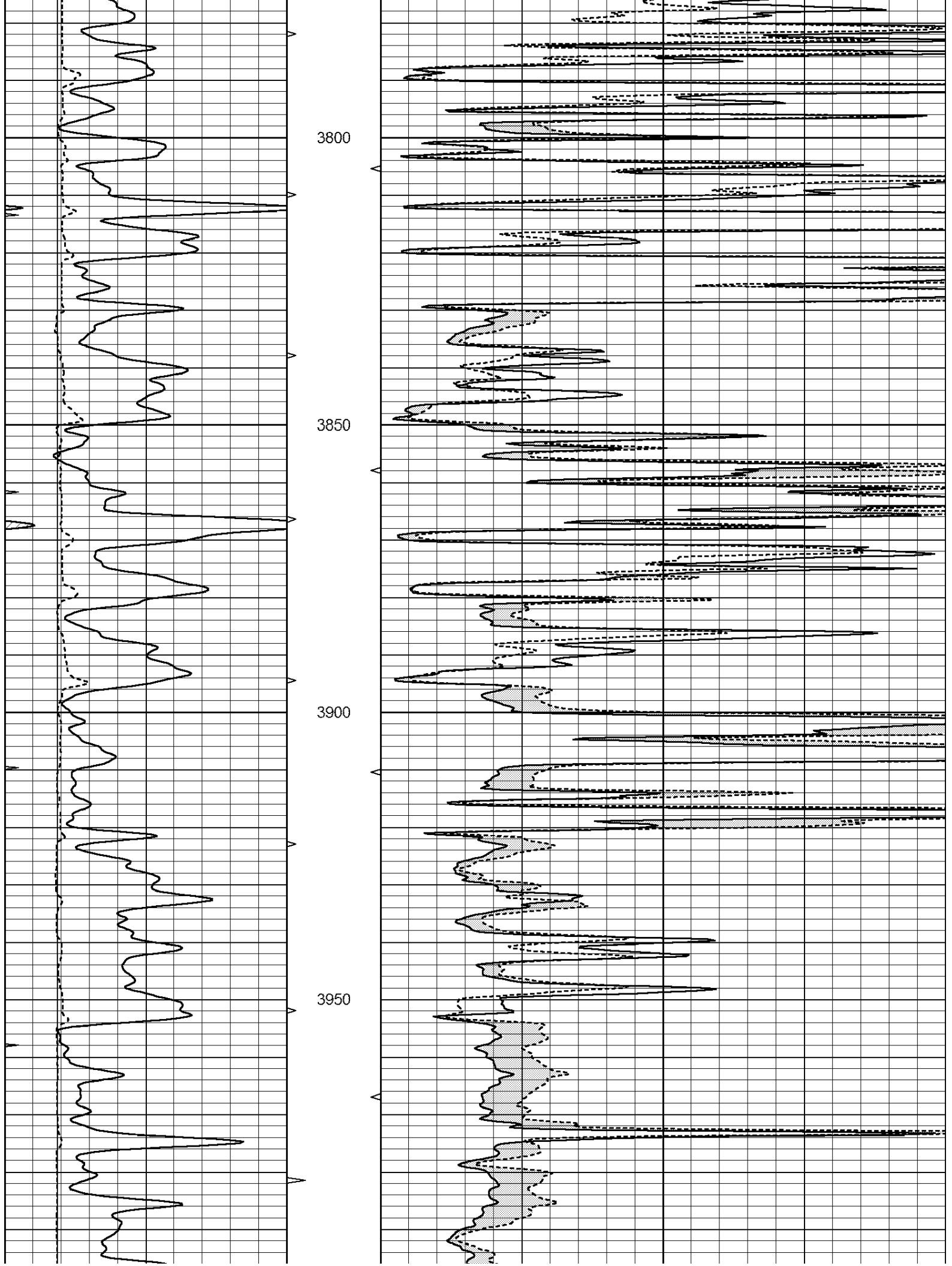


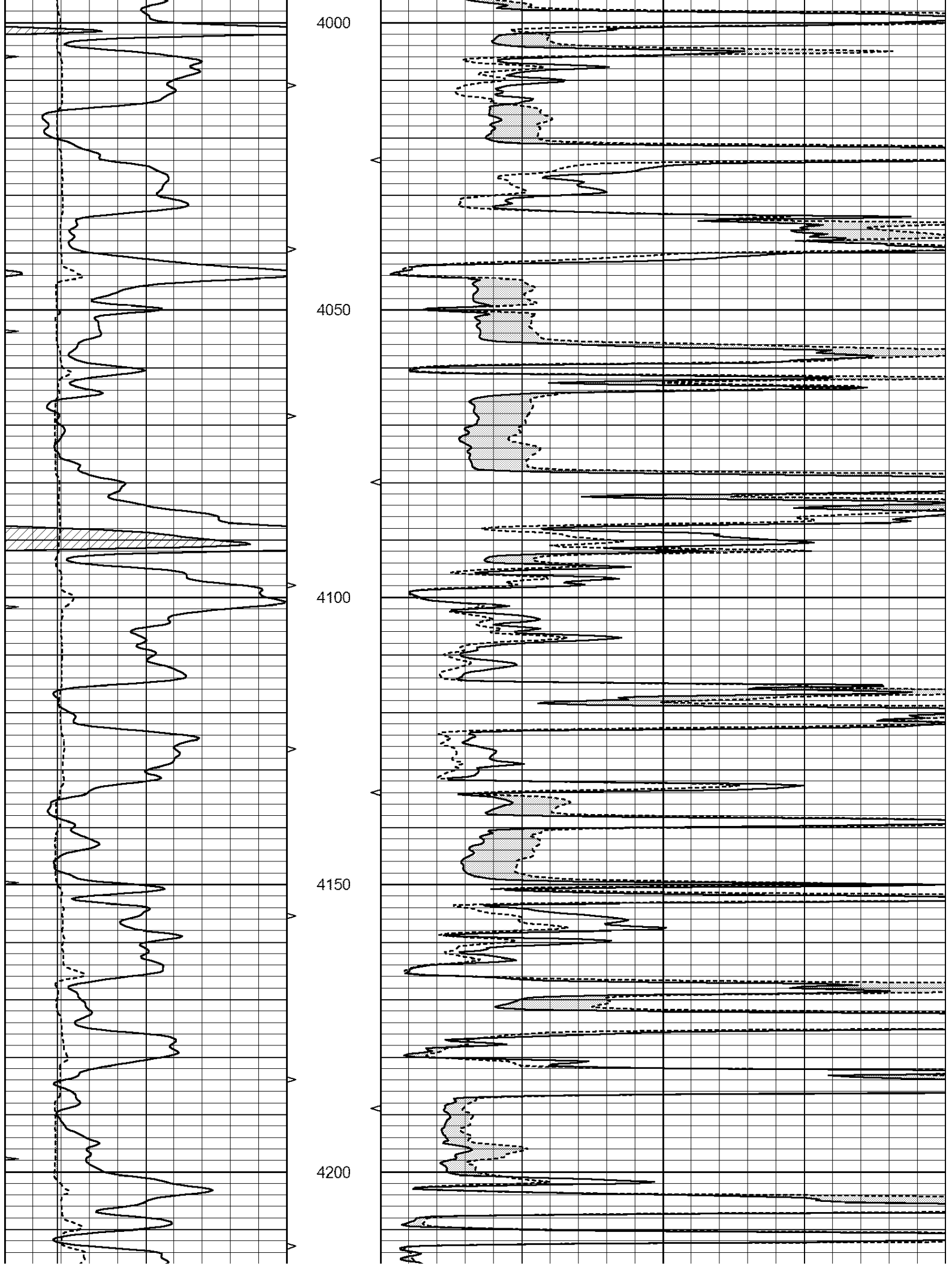
MAIN PASS

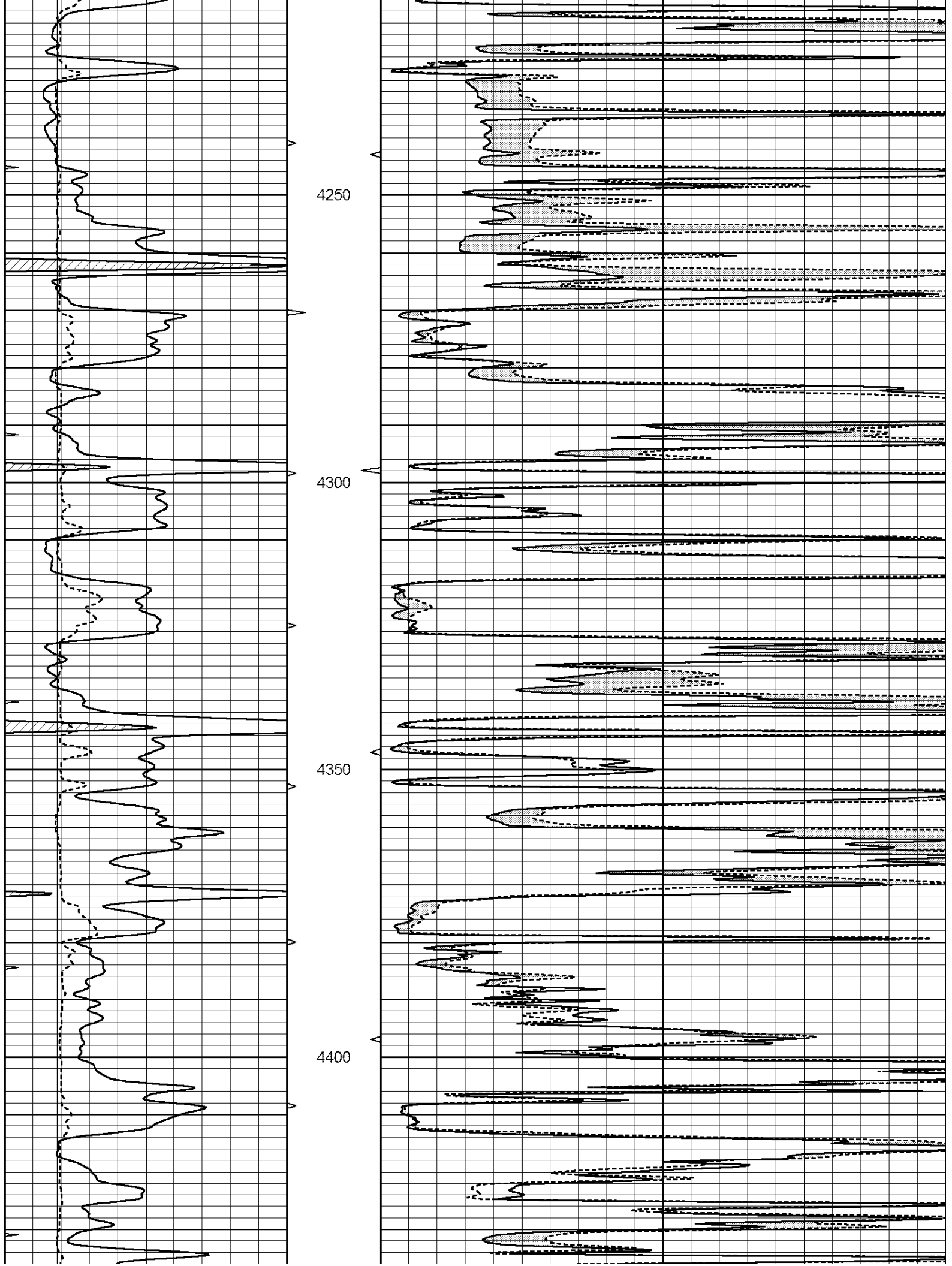
Database File: 4460ddn.db
 Dataset Pathname: pass6.1
 Presentation Format: _micro
 Dataset Creation: Thu Nov 21 06:46:36 2019 by Calc Open-Cased 090629
 Charted by: Depth in Feet scaled 1:240

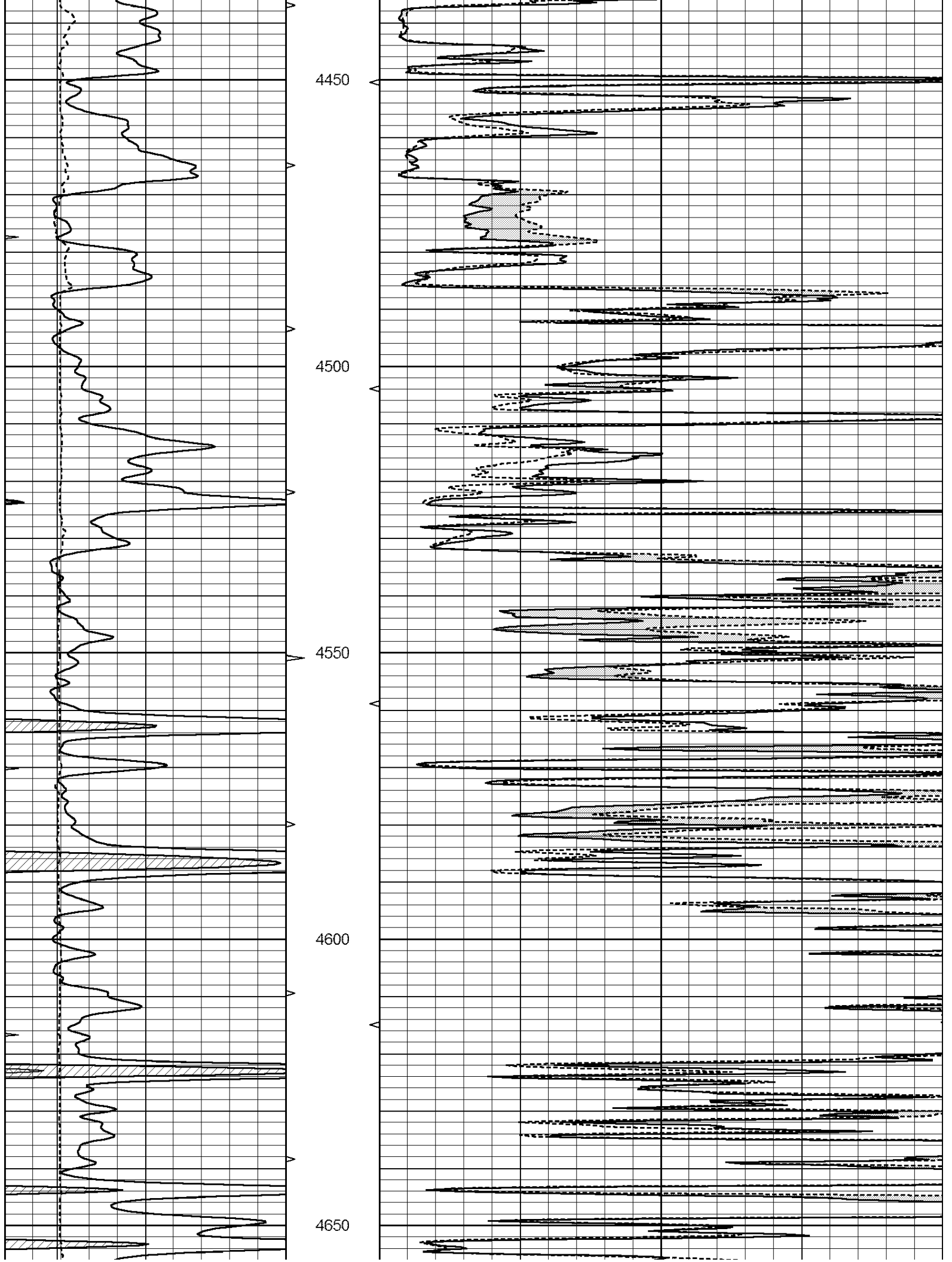
0	GAMMA RAY (GAPI)	150	ABHV	0	MEL1.5 (Ohm-m)	40
6	CALIPER (in)	16	10 (ft3)	0	MEL2.0 (Ohm-m)	40
0	MINMK	20	TBHV			
			0 (ft3)	10		

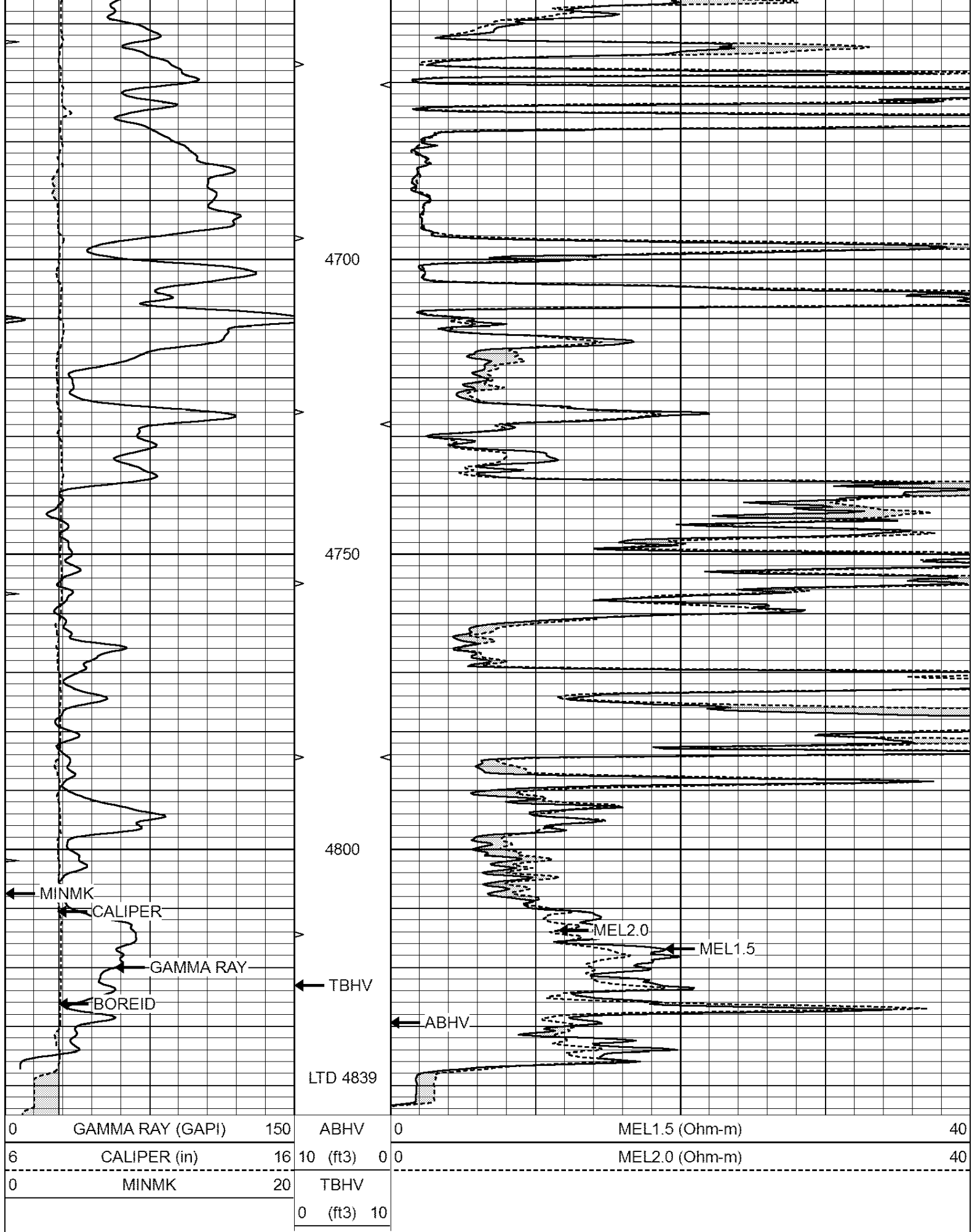




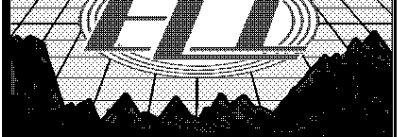






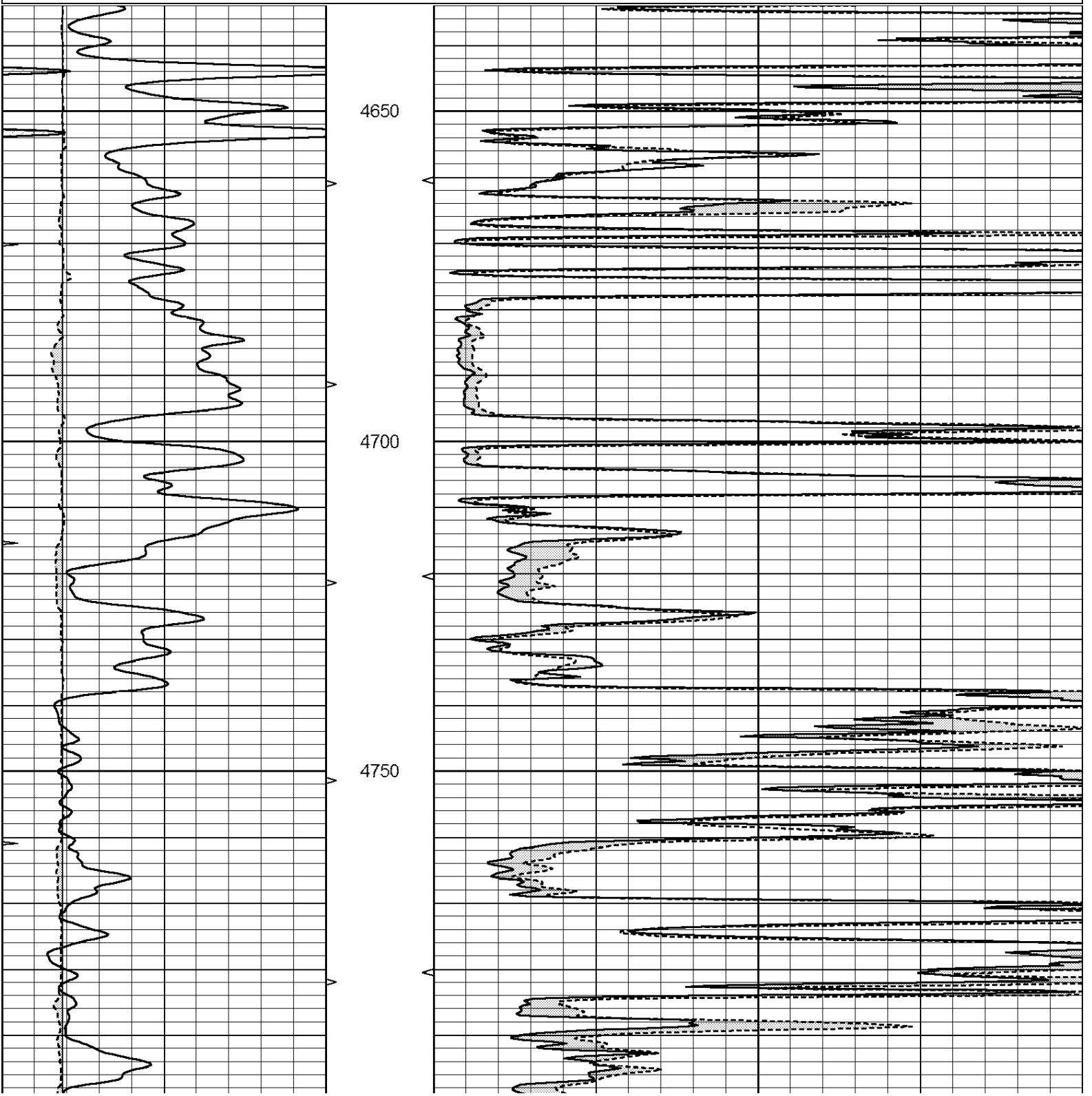


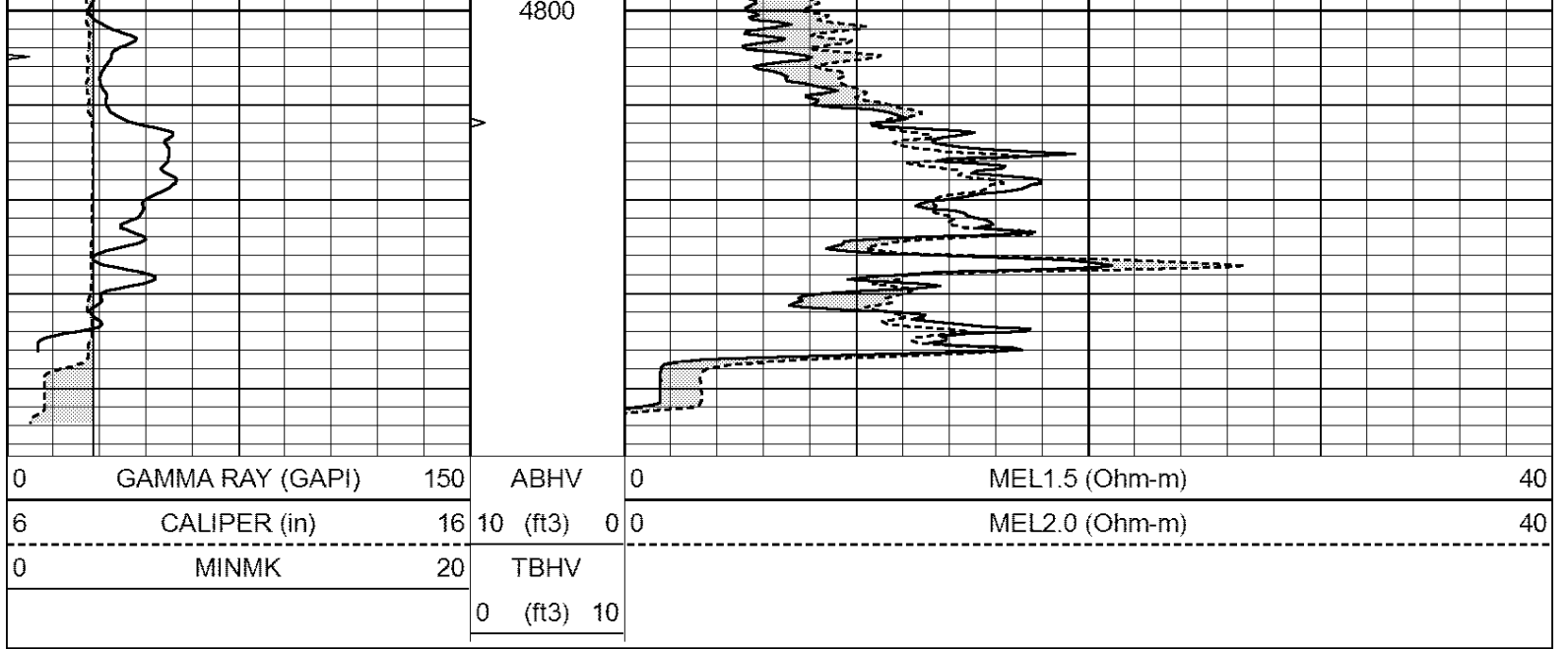
REPEAT SECTION



Database File: 4460ddn.db
 Dataset Pathname: pass5
 Presentation Format: _micro
 Dataset Creation: Thu Nov 21 06:09:13 2019 by Log Open-Cased 090629
 Charted by: Depth in Feet scaled 1:240

0	GAMMA RAY (GAPI)	150	ABHV	0	MEL1.5 (Ohm-m)	40
6	CALIPER (in)	16	10 (ft3)	0 0	MEL2.0 (Ohm-m)	40
0	MINMK	20	TBHV			
			0 (ft3)	10		





Calibration Report

Database File: 4460ddn.db
 Dataset Pathname: pass5
 Dataset Creation: Thu Nov 21 06:09:13 2019 by Log Open-Cased 090629

MICRO Calibration Report

Serial Number: Micro1
 Tool Model: ProbeL
 Performed: Sat Oct 26 06:47:35 2019

Caliper Calibration: Gain=2.030 Offset=6.505
 References Low Cal High Cal
 Readings 9.500 13.000
 0.308 2.032

1.5" Calibration: Gain=36.134 Offset=-1.000
 References Low Cal High Cal
 Readings 0.000 20.000
 0.004 0.832

2" Calibration: Gain=42.000 Offset=-0.300
 References Low Cal High Cal
 Readings 0.000 20.000
 0.022 0.793

Gamma Ray Calibration Report

Serial Number: GR5
 Tool Model: OPEN
 Performed: Thu Oct 24 16:06:54 2019

Calibrator Value: 1.0 GAPI
 Background Reading: 0.0 cps
 Calibrator Reading: 1.0 cps
 Sensitivity: 0.5800 GAPI/cps