



RADIATION
GUARD
LOG

Company L.D. DRILLING, INC.

Well #1-36 HORN

Field J-MUR NORTHEAST

County LANE State KANSAS

Location: API #: 15-101-22631-0000

165' FSL & 1320' FEL

SEC 36 TWP 19S RGE 29W

Permanent Datum GROUND LEVEL Elevation 2816
Log Measured From KELLY BUSHING 5' A.G.L.
Drilling Measured From KELLY BUSHING

Other Services
CDL/CNL
DIL/MEL

Elevation

K.B. 2821
D.F. 2819
G.L. 2816

Date	9/26/19
Run Number	ONE
Depth Driller	4747
Depth Logger	4748
Bottom Logged Interval	4746
Top Log Interval	3500
Casing Driller	8 5/8" @ 303'
Casing Logger	303'
Bit Size	7 7/8
Type Fluid in Hole	CHEMICAL MUD
Density / Viscosity	9.4/46
pH / Fluid Loss	9.0/8.0
Source of Sample	FLOWLINE
Rm @ Meas. Temp	1.0 @ 80F
Rmf @ Meas. Temp	.75 @ 80F
Rmc @ Meas. Temp	1.2 @ 80F
Source of Rmf / Rmc	MEASUREMENT
Rm @ BHT	.65 @ 123F
Time Circulation Stopped	2 HOURS
Time Logger on Bottom	////
Maximum Recorded Temperature	123F
Equipment Number	3802
Location	HAYS, KANSAS
Recorded By	JASON CAPPELLUCCI
Witnessed By	KIM SHOEMAKER

<<< Fold Here >>>

All interpretations are opinions based on inferences from electrical or other measurements and we cannot and do not guarantee the accuracy or correctness of any interpretation, and we shall not, except in the case of gross or willful negligence on our part, be liable or responsible for any loss, costs, damages, or expenses incurred or sustained by anyone resulting from any interpretation made by any of our officers, agents or employees. These interpretations are also subject to our general terms and conditions set out in our current Price Schedule.

Comments

THANK YOU FOR USING ELI WIRELINE SERVICES, HAYS, KS. (785) 628-6395
DIRECTIONS
DIGHTON, KS. - 9 SOUTH TO RD. 60 - 1/4 WEST - NORTH INTO

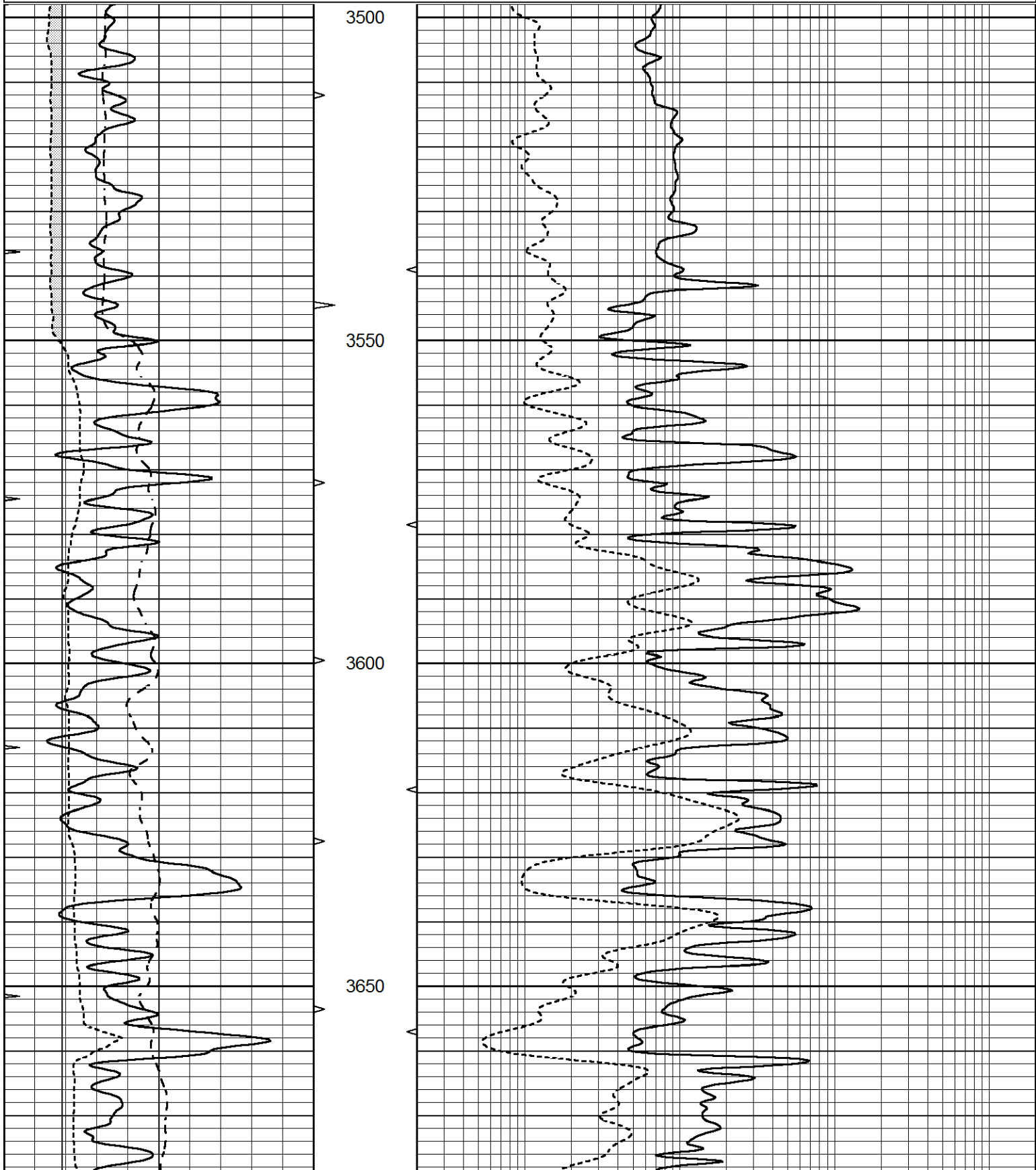


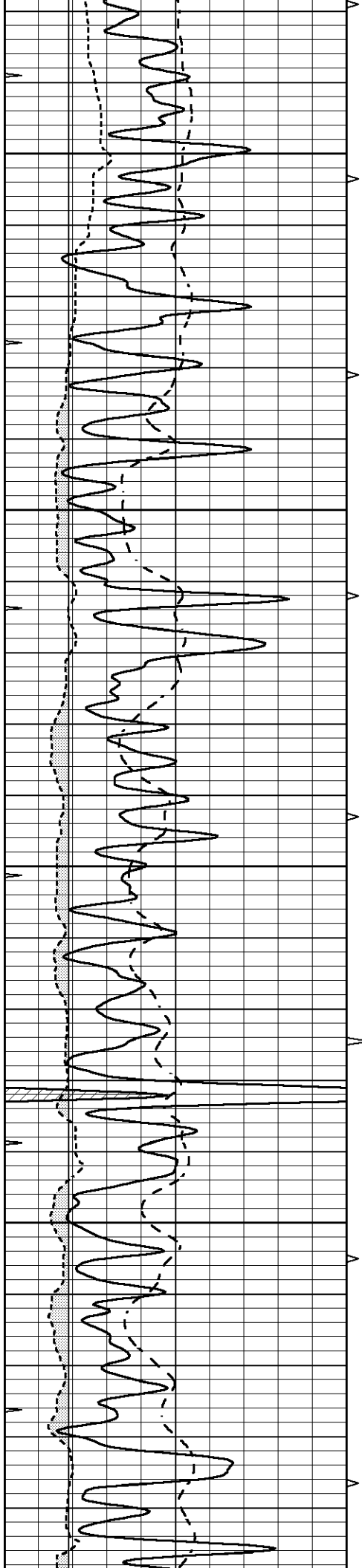
MAIN SECTION

Database File 3995ddn8.db
 Dataset Pathname pass3.1
 Presentation Format _ragstk
 Dataset Creation Thu Sep 26 01:43:22 2019
 Charted by Depth in Feet scaled 1:240

0	GAMMA RAY (GAPI)	150	ABHV
6	CALIPER (in)	16	10 (ft3) 0
-100	SP (mV)	100	TBHV
			0 (ft3) 10

GUARD	
NEUTRON	



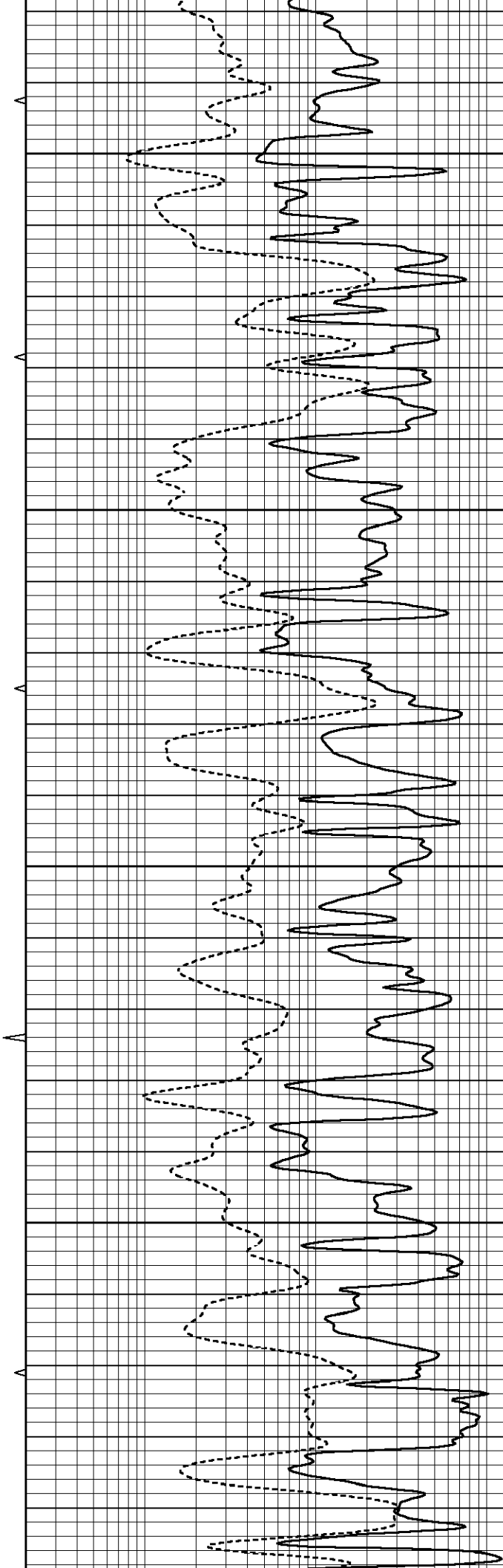


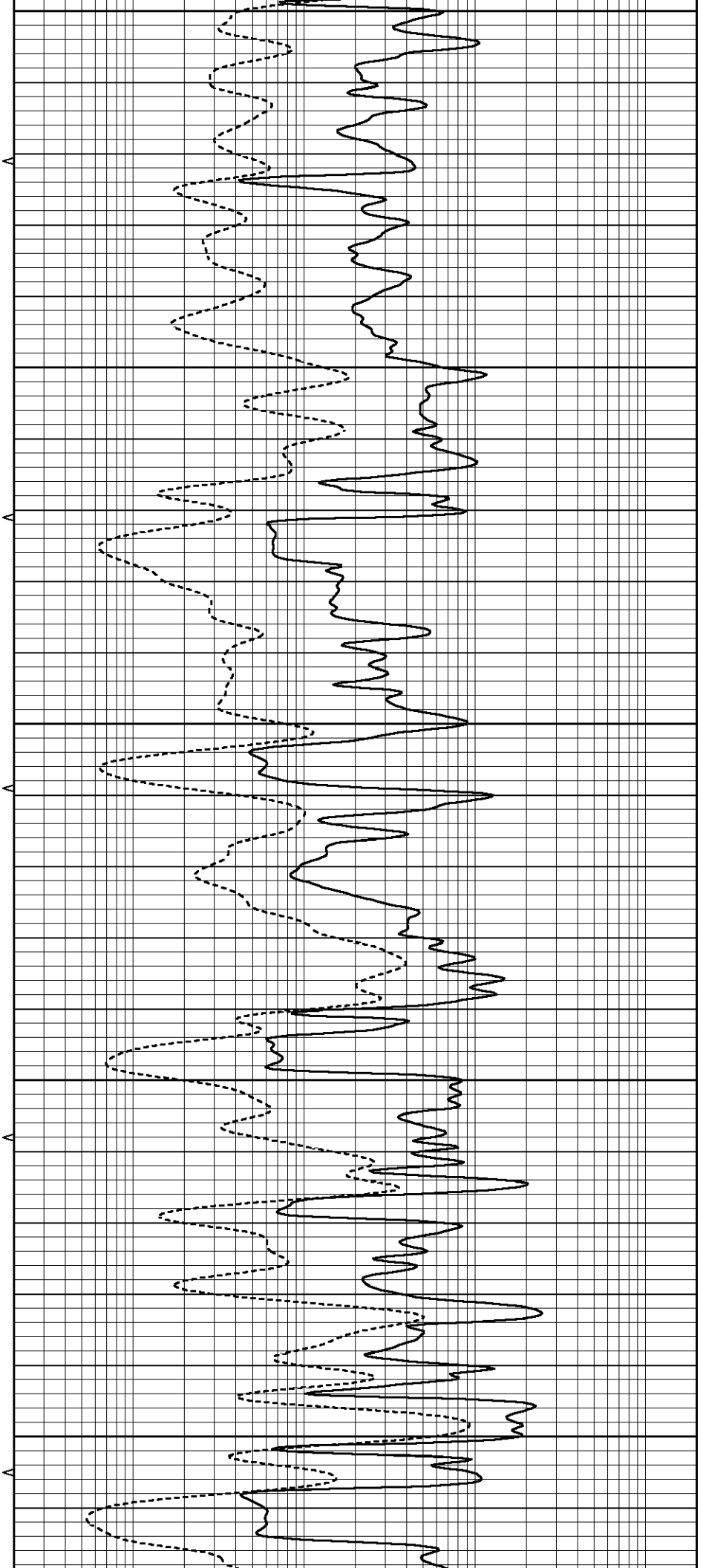
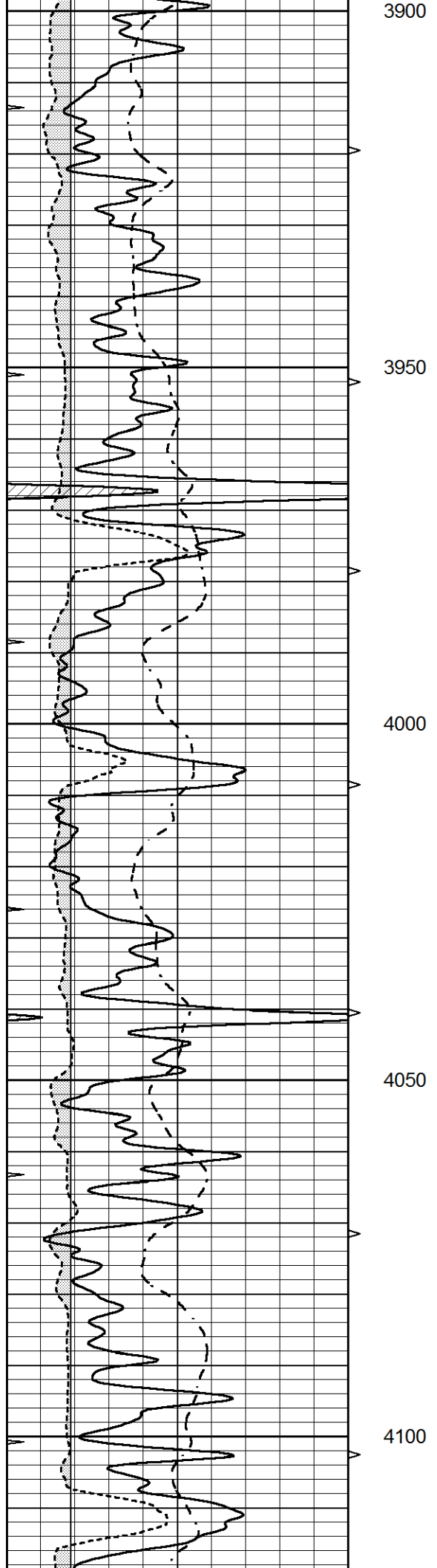
3700

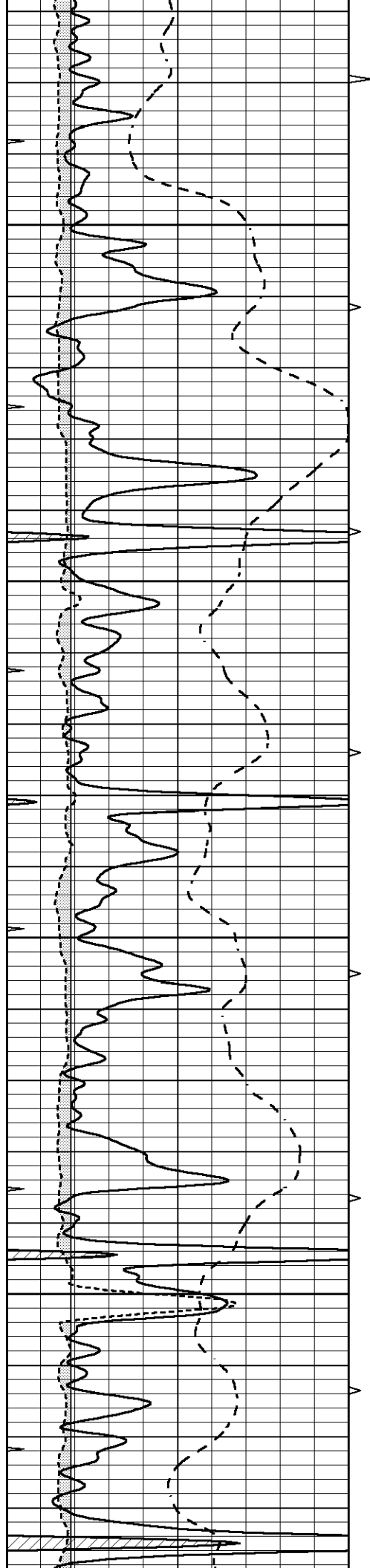
3750

3800

3850





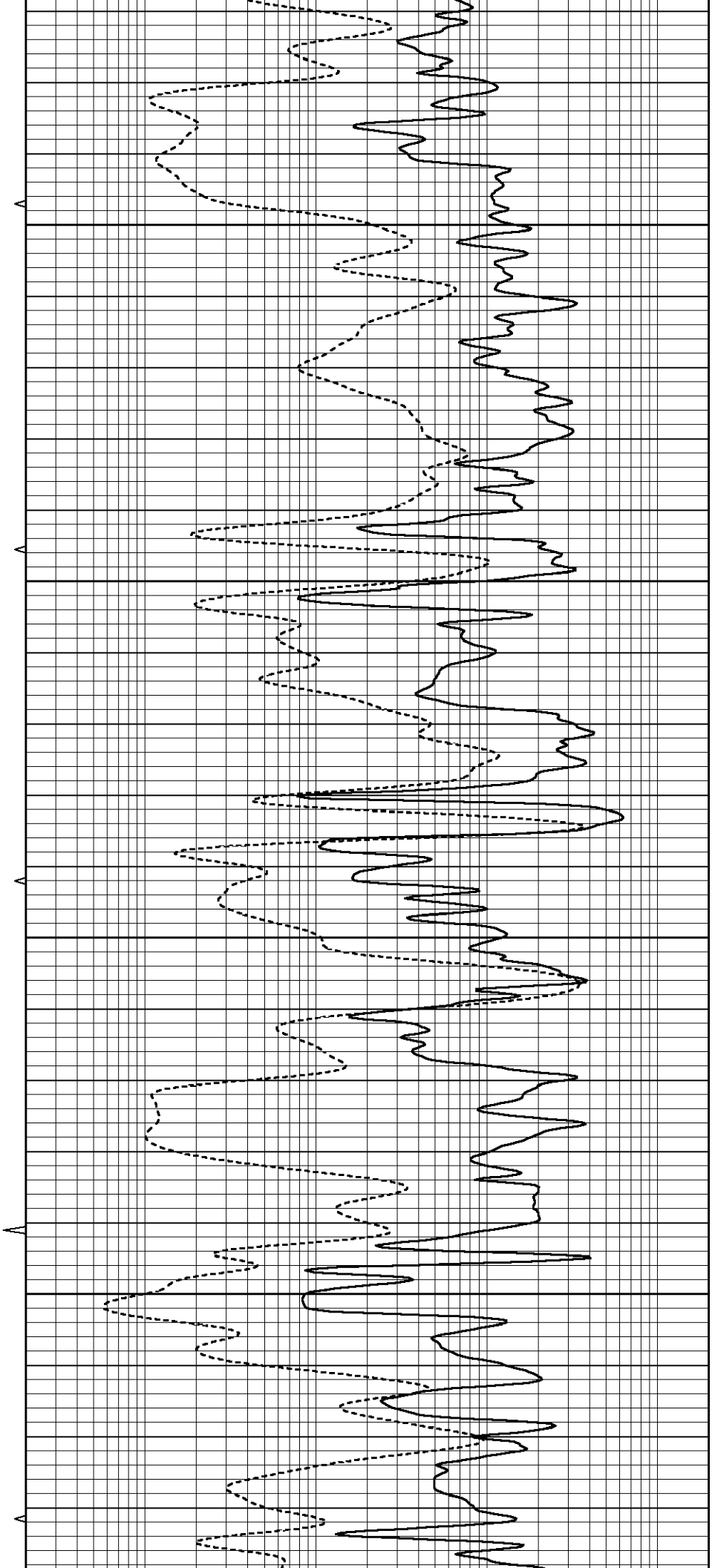


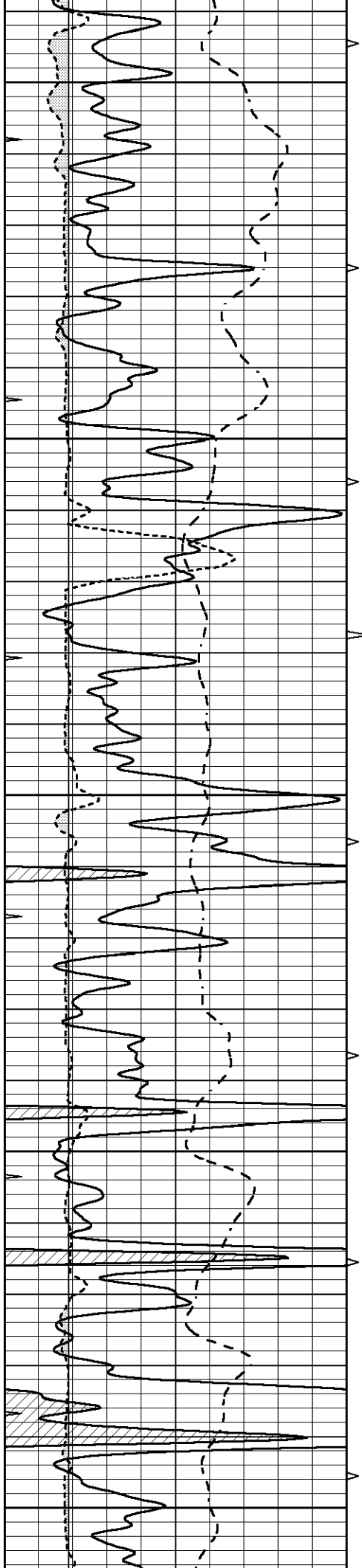
4150

4200

4250

4300





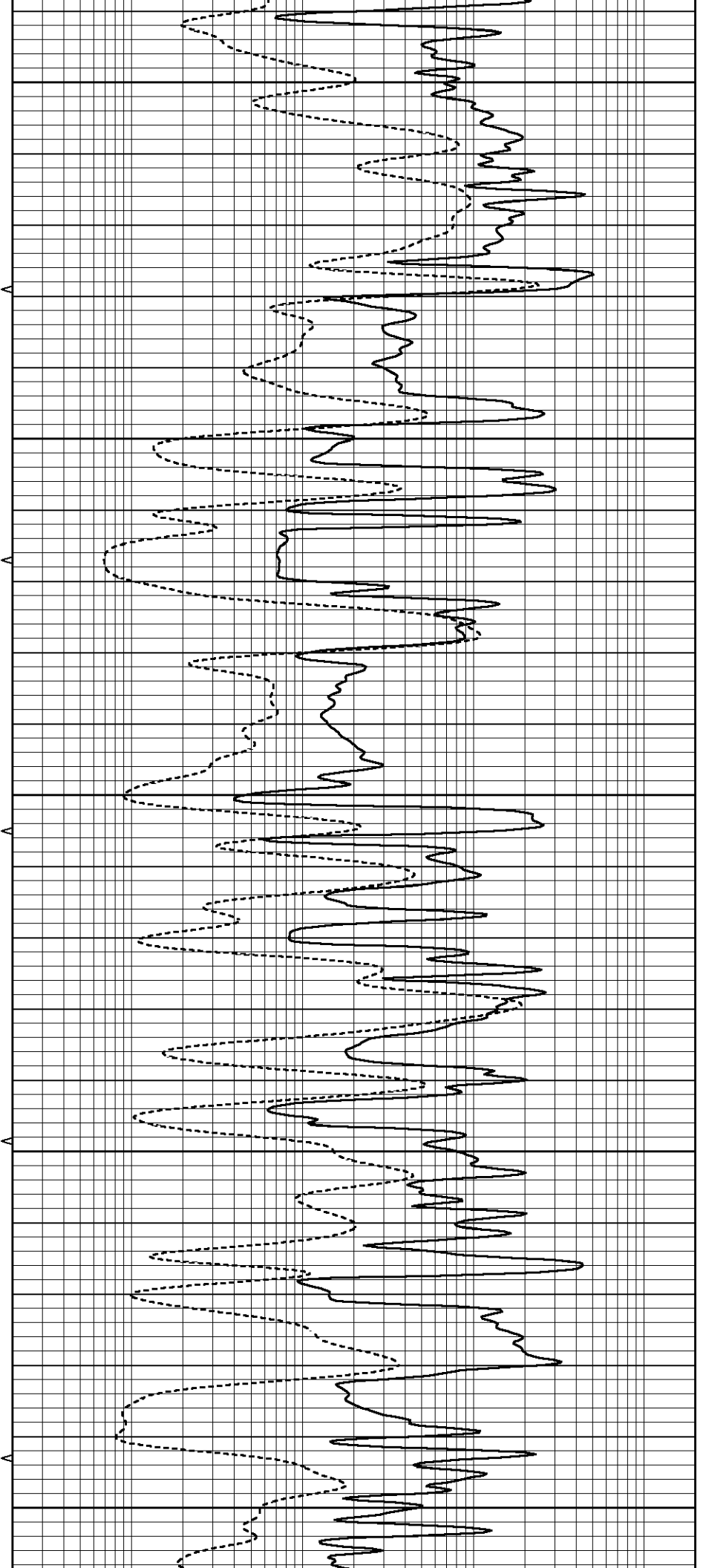
4350

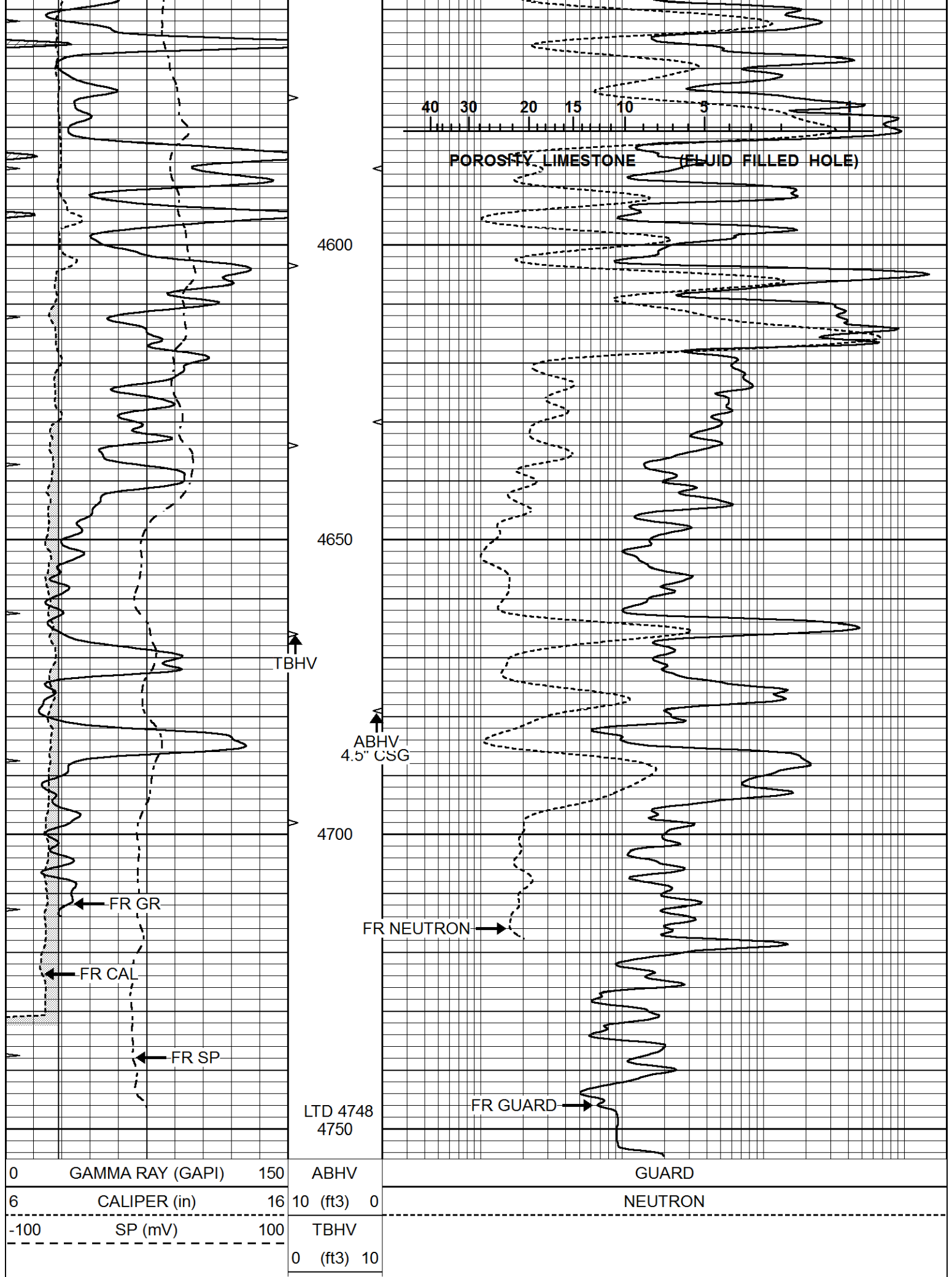
4400

4450

4500

4550





0	GAMMA RAY (GAPI)	150	ABHV
6	CALIPER (in)	16	10 (ft3) 0
-100	SP (mV)	100	TBHV
			0 (ft3) 10

	GUARD
	NEUTRON