

MICRO LOG



Company L.D. DRILLING, INC.
 Well #1-36 HORN
 Field J-MUR NORTHEAST
 County LANE State KANSAS

Location: API #: 15-101-22631-0000
 165' FSL & 1320' FEL
 SEC 36 TWP 19S RGE 29W
 Permanent Datum GROUND LEVEL Elevation 2816
 Log Measured From KELLY BUSHING 5' A.G.L
 Drilling Measured From KELLY BUSHING
 Other Services CDL/CNL DIL
 Elevation K.B. 2821 D.F. 2819 G.L. 2816

Date	9/26/19		
Run Number	TWO		
Depth Driller	4747		
Depth Logger	4748		
Bottom Logged Interval	4746		
Top Log Interval	3800		
Casing Driller	8 5/8" @ 303'		
Casing Logger	303'		
Bit Size	7 7/8		
Type Fluid in Hole	CHEMICAL MUD	CHLORIDES 3600 PPM	
Density / Viscosity	9.4/46		
pH / Fluid Loss	9.0/8.0		
Source of Sample	FLOWLINE		
Rm @ Meas. Temp	1.0 @ 80F		
Rmf @ Meas. Temp	.75 @ 80F		
Rmc @ Meas. Temp	1.2 @ 80F		
Source of Rmf / Rmc	MEASUREMENT		
Rm @ BHT	.65 @ 123F		
Time Circulation Stopped	2 HOURS		
Time Logger on Bottom	////		
Maximum Recorded Temperature	123F		
Equipment Number	3802		
Location	HAYS, KANSAS		
Recorded By	JASON CAPPELLUCCI		
Witnessed By	KIM SHOEMAKER		

<<< Fold Here >>>

All interpretations are opinions based on inferences from electrical or other measurements and we cannot and do not guarantee the accuracy or correctness of any interpretation, and we shall not, except in the case of gross or willful negligence on our part, be liable or responsible for any loss, costs, damages, or expenses incurred or sustained by anyone resulting from any interpretation made by any of our officers, agents or employees. These interpretations are also subject to our general terms and conditions set out in our current Price Schedule.

Comments

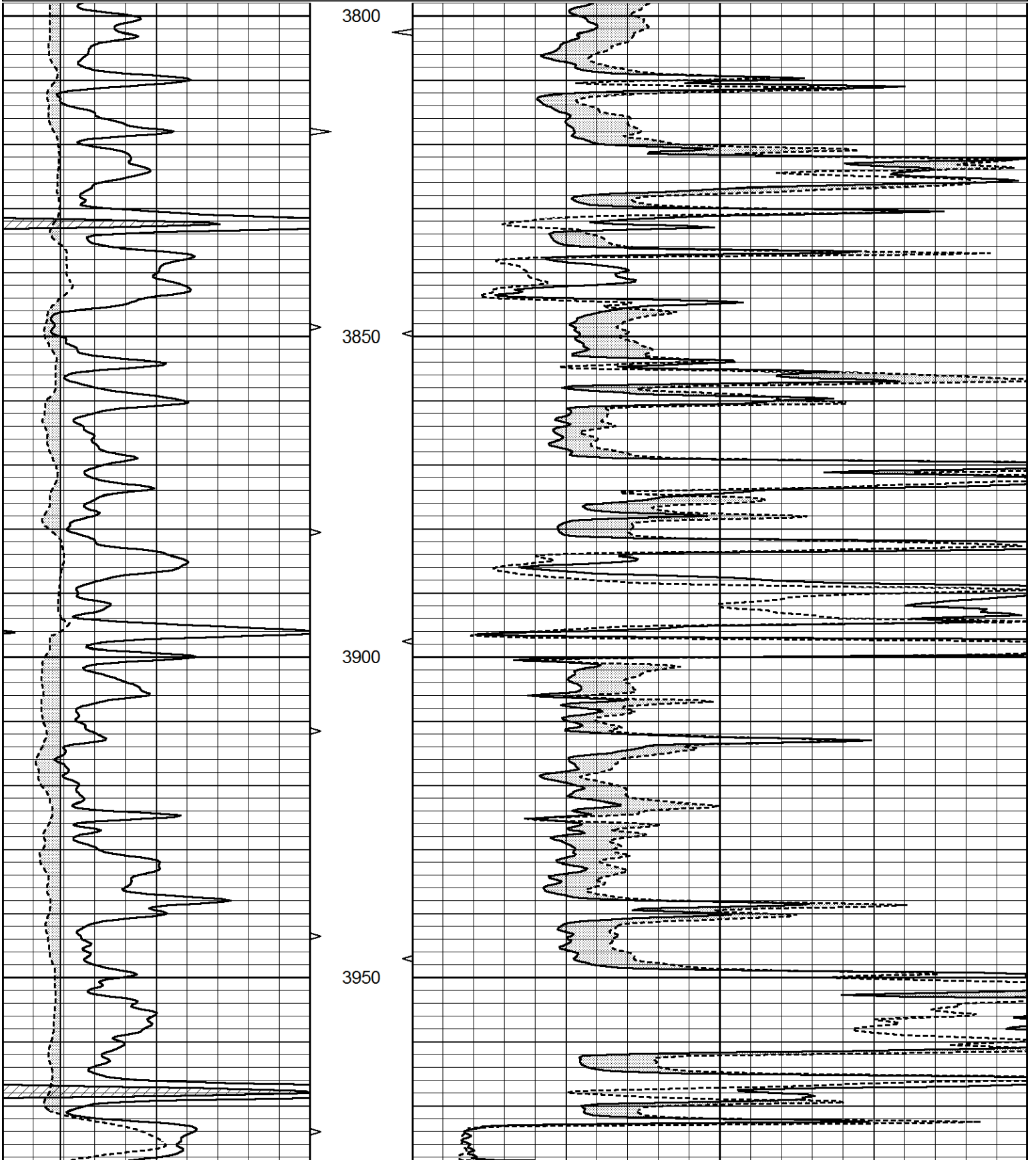
THANK YOU FOR USING ELI WIRELINE SERVICES, HAYS, KS. (785) 628-6395
 DIRECTIONS
 DIGHTON, KS. - 9 SOUTH TO RD. 60 - 1/4 WEST - NORTH INTO

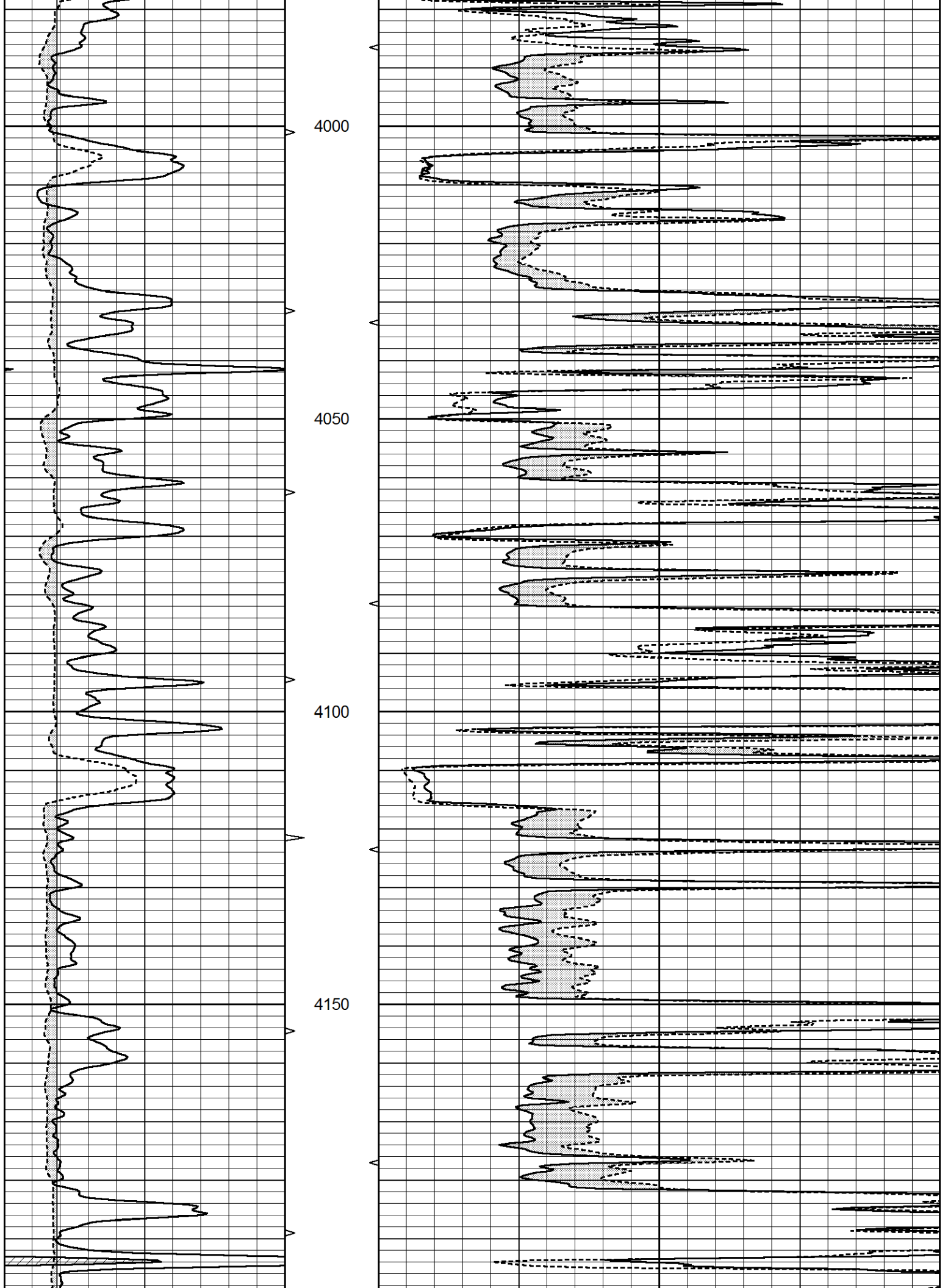


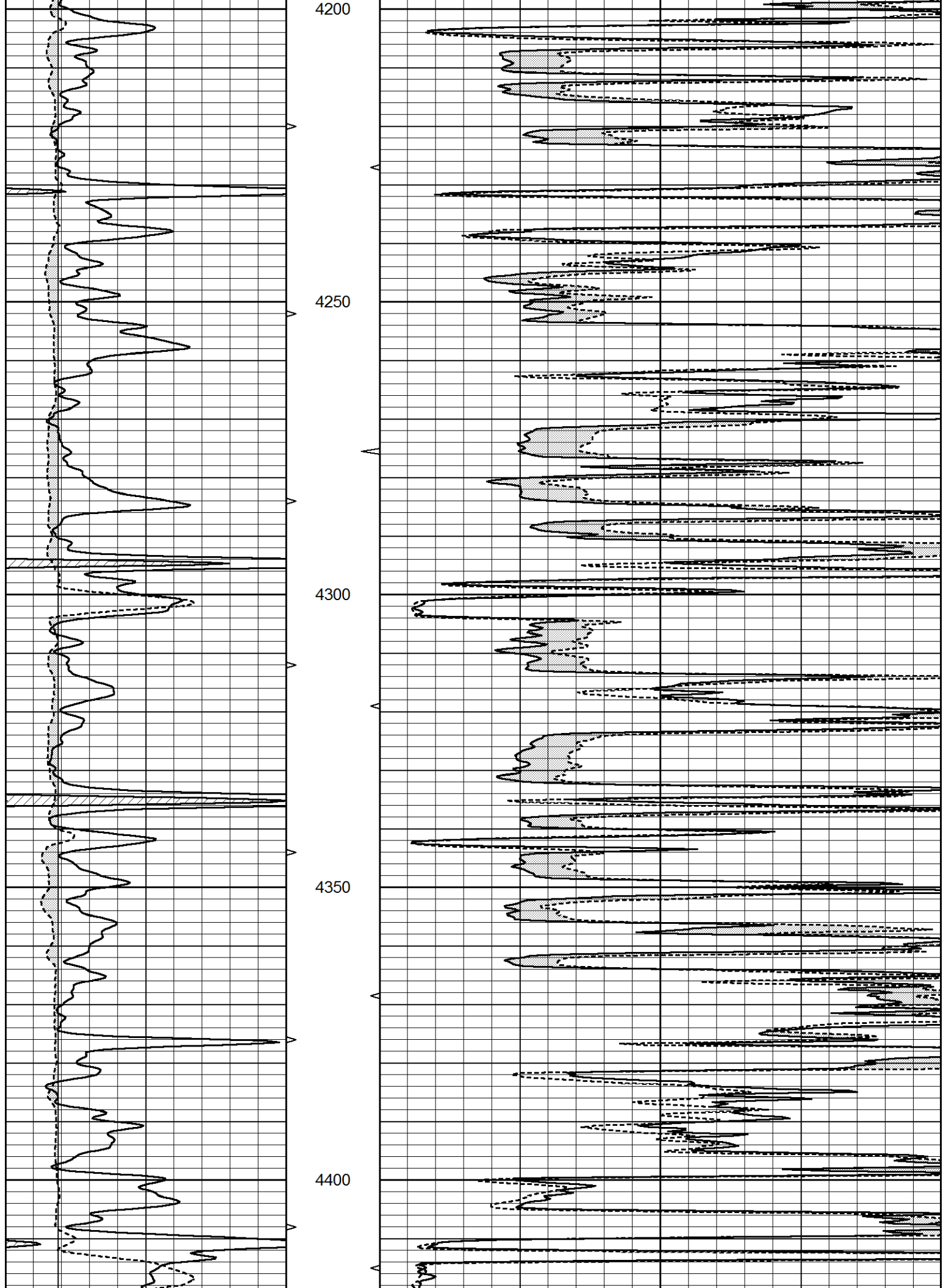
MAIN SECTION

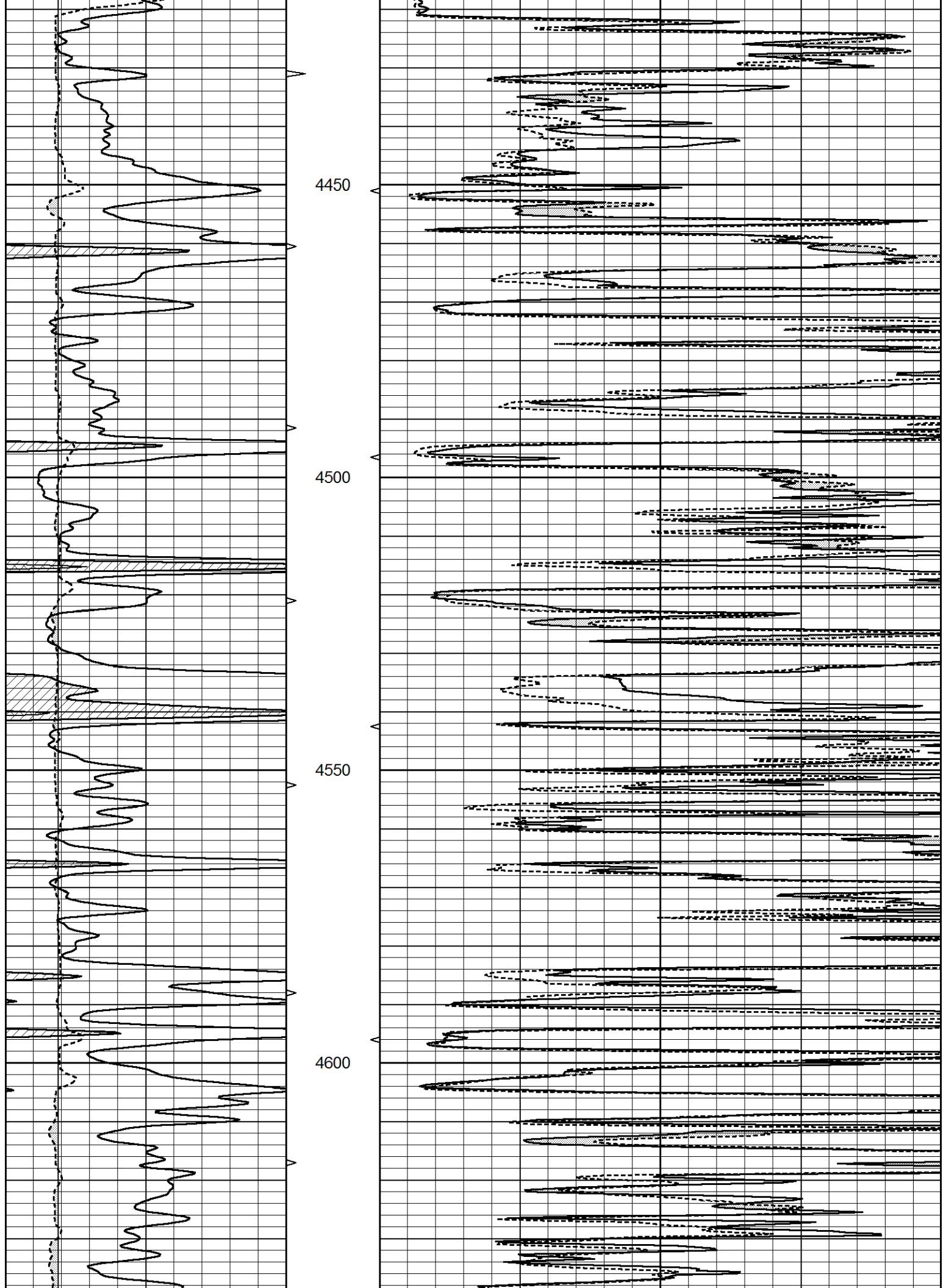
Database File 3995ddn8.db
 Dataset Pathname pass6.1
 Presentation Format _micro
 Dataset Creation Thu Sep 26 03:28:56 2019
 Charted by Depth in Feet scaled 1:240

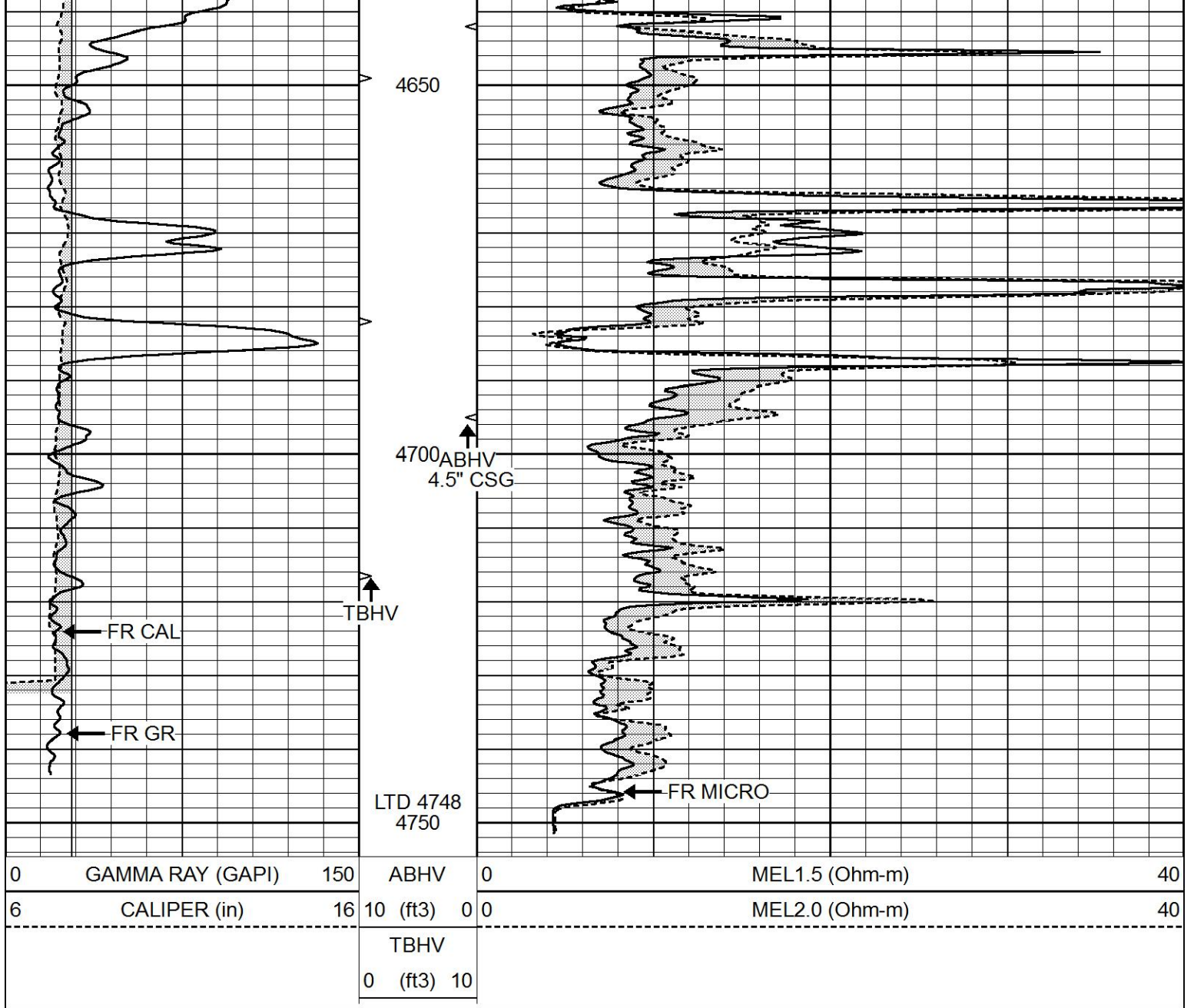
0	GAMMA RAY (GAPI)	150	ABHV	0	MEL1.5 (Ohm-m)	40
6	CALIPER (in)	16	10 (ft3)	0 0	MEL2.0 (Ohm-m)	40
			TBHV			
			0 (ft3)	10		







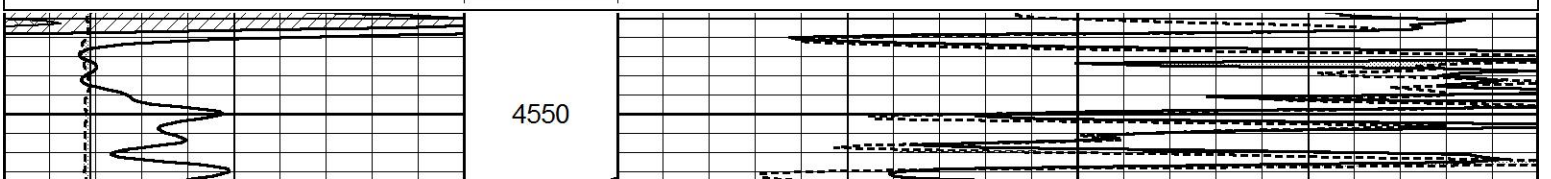


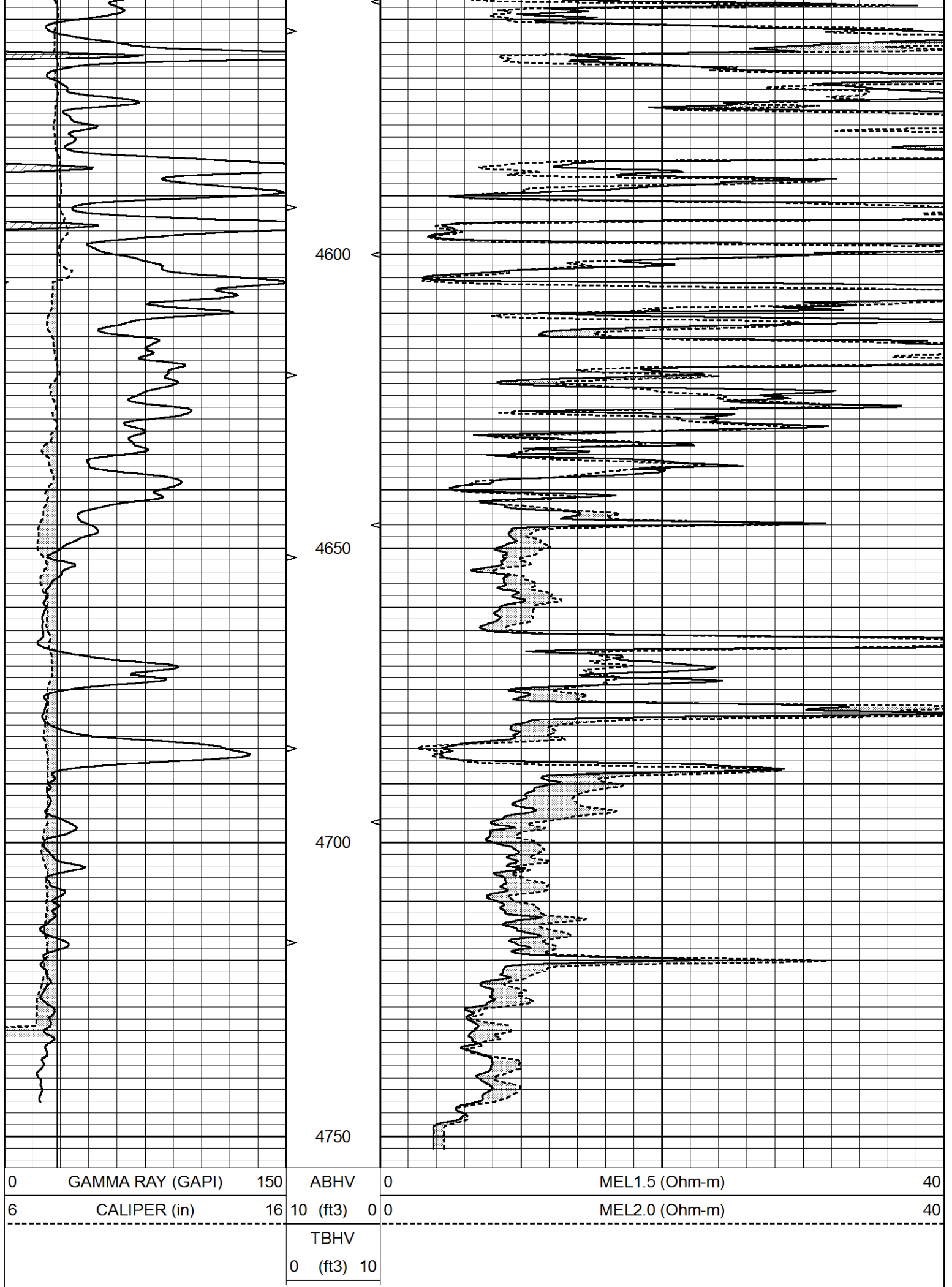


REPEAT SECTION

Database File 3995ddn8.db
 Dataset Pathname pass5.1
 Presentation Format _micro
 Dataset Creation Thu Sep 26 03:20:42 2019
 Charted by Depth in Feet scaled 1:240

0	GAMMA RAY (GAPI)	150	ABHV	0	MEL1.5 (Ohm-m)	40
6	CALIPER (in)	16	10 (ft3)	0 0	MEL2.0 (Ohm-m)	40
			TBHV			
			0 (ft3)	10		





4600

4650

4700

4750

0 GAMMA RAY (GAPI) 150

6 CALIPER (in) 16

ABHV

0 10 (ft³)

TBHV

0 (ft³) 10

0 MEL1.5 (Ohm-m) 40

0 MEL2.0 (Ohm-m) 40

Calibration Report

Database File 3995ddn8.db
 Dataset Pathname pass5.1
 Dataset Creation Thu Sep 26 03:20:42 2019

MICRO_USR Calibration Report

Serial Number:	070911	
Tool Model:	ProbeL	
Performed:	Wed Aug 07 14:47:35 2019	
Caliper Calibration:	Gain=3.755	Offset=2.450
References	Low Cal	High Cal
Readings	8.000	14.000
	1.451	3.049
1.5" Calibration:	Gain=42.000	Offset=0.000
References	Low Cal	High Cal
Readings	0.000	20.000
	0.004	0.843
2" Calibration:	Gain=50.000	Offset=-0.650
References	Low Cal	High Cal
Readings	0.000	20.000
	0.021	0.810

Microlog Calibration Report

Serial-Model:	070911-ProbeL
Performed:	Sat Apr 11 01:13:01 2015

	Readings			References			Results	
	Zero	Cal		Zero	Cal		m	b
Normal	0.0002	0.4836	V	0.0000	10.0000	Ohm-m	20.6908	-0.0051
Inverse	0.0018	0.6297	V	0.0000	10.0000	Ohm-m	15.9263	-0.0282
Caliper	0.0000	1.0000	V	0.0000	1.0000	in	1.0000	0.0000

Gamma Ray Calibration Report

Serial Number:	070558	
Tool Model:	Probe1	
Performed:	Mon Jan 21 19:38:56 2019	
Calibrator Value:	1.0	GAPI
Background Reading:	0.0	cps
Calibrator Reading:	1.0	cps
Sensitivity:	0.2500	GAPI/cps