



MICRO LOG

Company ANCHOR BAY PETROLEUM, LLC.
Well BARBARA #1
Field WILDCAT
County ELLIS
State KANSAS

Company ANCHOR BAY PETROLEUM, LLC.
Well BARBARA #1
Field WILDCAT
County ELLIS
State KANSAS

Location: API # : 15-051-26899-00-00
894' FSL & 542' FEL
SEC 2 TWP 11S RGE 17W
Permanent Datum GROUND LEVEL Elevation 1840'
Log Measured From KELLY BUSHING 8' A.G.L.
Drilling Measured From KELLY BUSHING
Other Services
CDL/CNL/DIL
SONIC
Elevation
K.B. 1848'
D.F. 1846
G.L. 1840

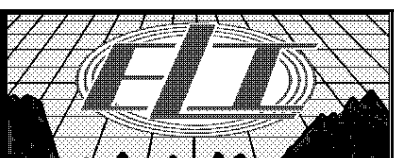
| | |
|------------------------------|-----------------|
| Date | 12/14/17 |
| Run Number | TWO |
| Depth Driller | 3510 |
| Depth Logger | 3505 |
| Bottom Logged Interval | 3585 |
| Top Log Interval | 2700 |
| Casing Driller | 8 5/8" @ 221 |
| Casing Logger | 221 |
| Bit Size | 7 7/8" |
| Type Fluid in Hole | CHEMICAL MUD |
| Density / Viscosity | 8.9/45 |
| pH / Fluid Loss | 8.5/9.6 |
| Source of Sample | FLOWLINE |
| Rm @ Meas. Temp | .60@53 |
| Rmt @ Meas. Temp | .45@53 |
| Rmc @ Meas. Temp | .72@53 |
| Source of Rmf / Rmc | MEASURED |
| Rm @ BHT | 28@112 |
| Time Circulation Stopped | 2 HOURS |
| Time Logger on Bottom | /// |
| Maximum Recorded Temperature | 112F |
| Equipment Number | 4010 |
| Location | HAYS, KANSAS |
| Recorded By | GUS PFANENSTIEL |
| Witnessed By | ED GLASSMAN |

<<< Fold Here >>>

All interpretations are opinions based on inferences from electrical or other measurements and we cannot and do not guarantee the accuracy or correctness of any interpretation, and we shall not, except in the case of gross or willful negligence on our part, be liable or responsible for any loss, costs, damages, or expenses incurred or sustained by anyone resulting from any interpretation made by any of our officers, agents or employees. These interpretations are also subject to our general terms and conditions set out in our current Price Schedule.

Comments

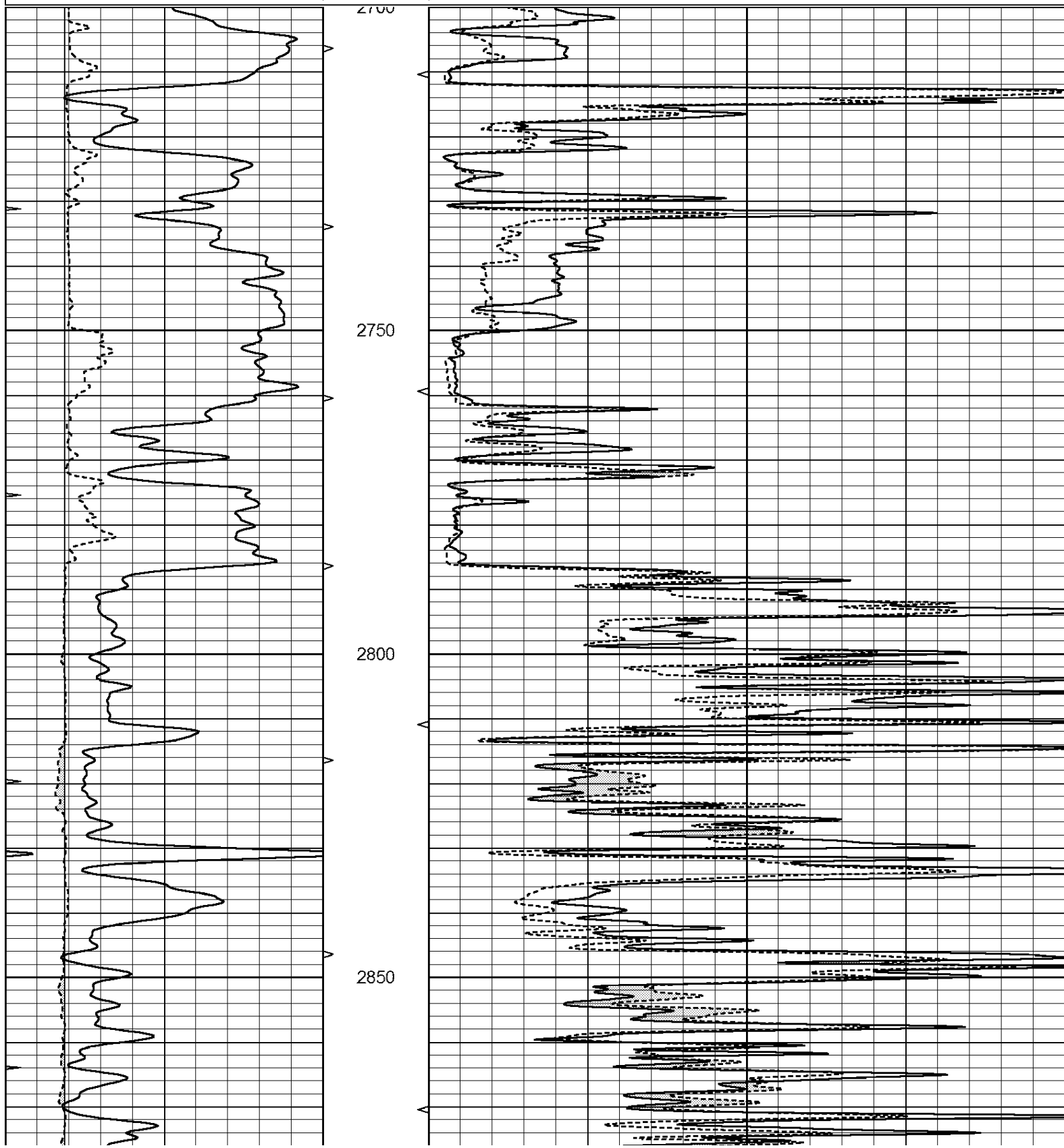
THANK YOU FOR USING ELI WIRELINE, HAYS, KS. (785) 628-6395
DIRECTIONS
SALINE RIVER RD. TO CODEL RD., 1 MILE NORTH
1 EAST, NORTH INTO.

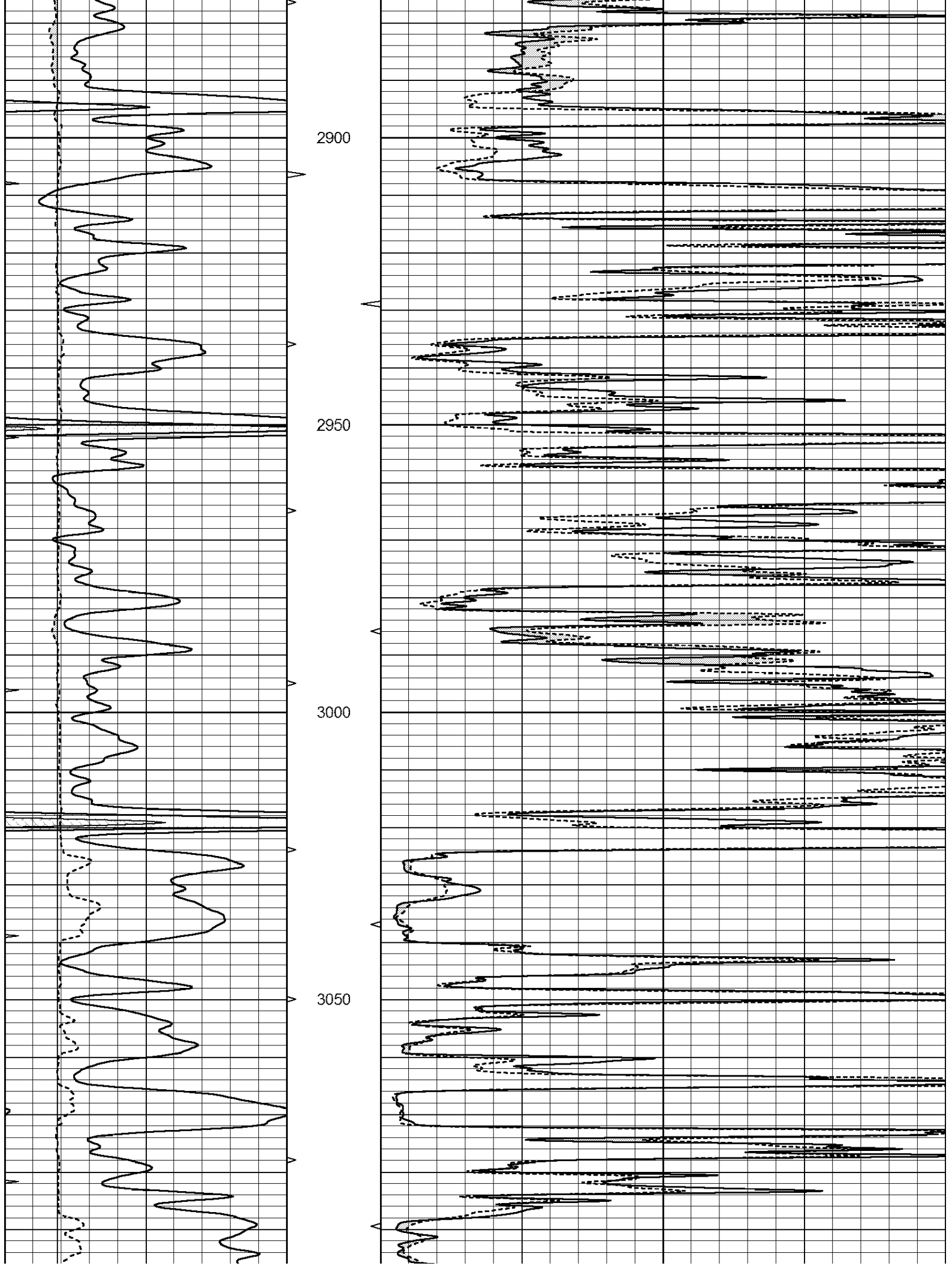


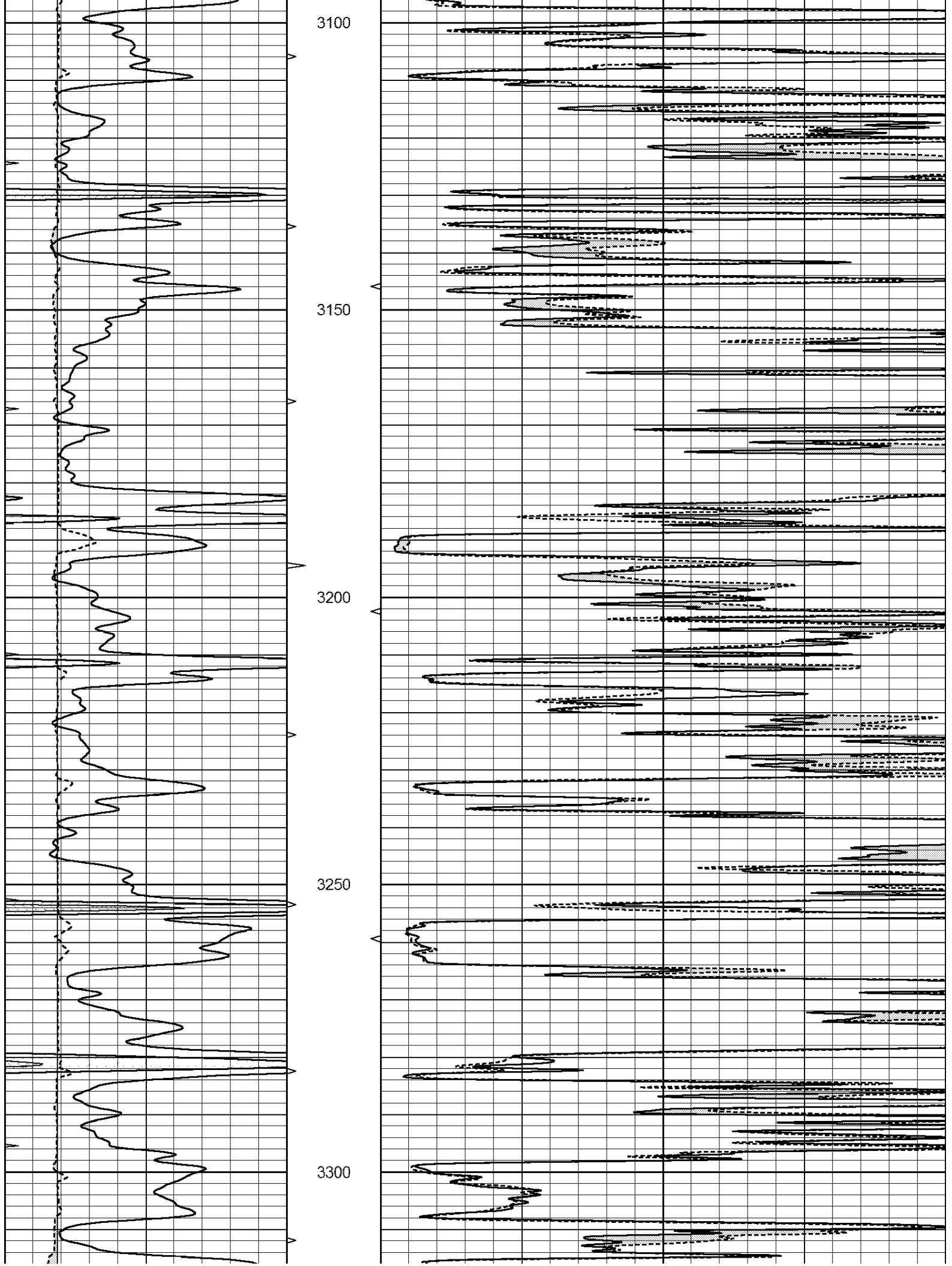
MAIN PASS

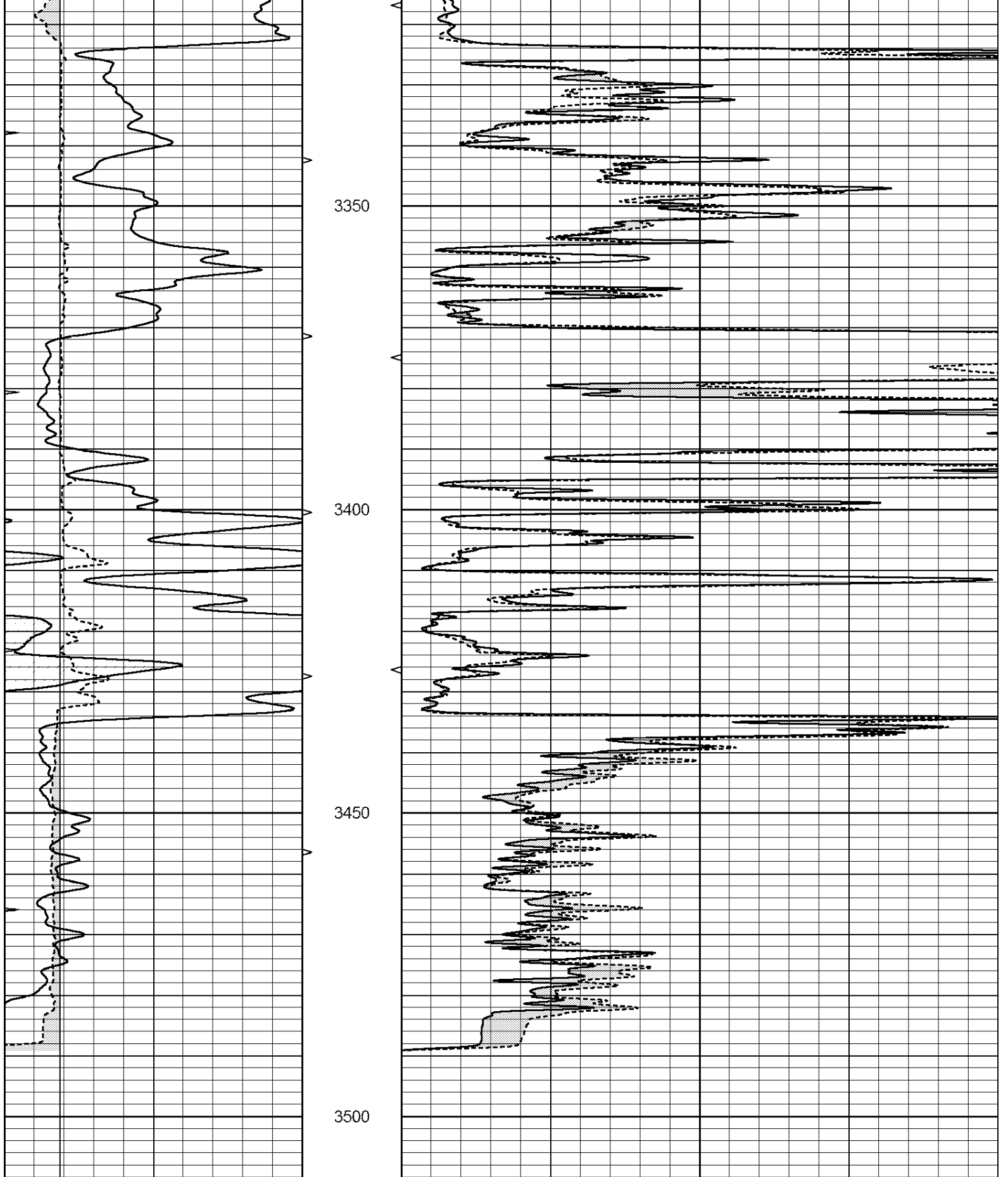
Database File: 2119ddn.db
 Dataset Pathname: pass7MIC
 Presentation Format: _micro
 Dataset Creation: Thu Dec 14 12:57:03 2017 by Calc Open-Cased 090629
 Charted by: Depth in Feet scaled 1:240

| | | | | | | |
|---|------------------|-----|----------|----|----------------|----|
| 0 | GAMMA RAY (GAPI) | 150 | ABHV | 0 | MEL1.5 (Ohm-m) | 40 |
| 6 | CALIPER (in) | 16 | 10 (ft3) | 0 | MEL2.0 (Ohm-m) | 40 |
| 0 | MINMK | 20 | TBHV | | | |
| | | | 0 (ft3) | 10 | | |

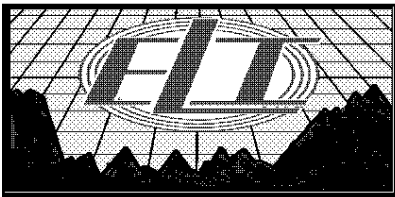








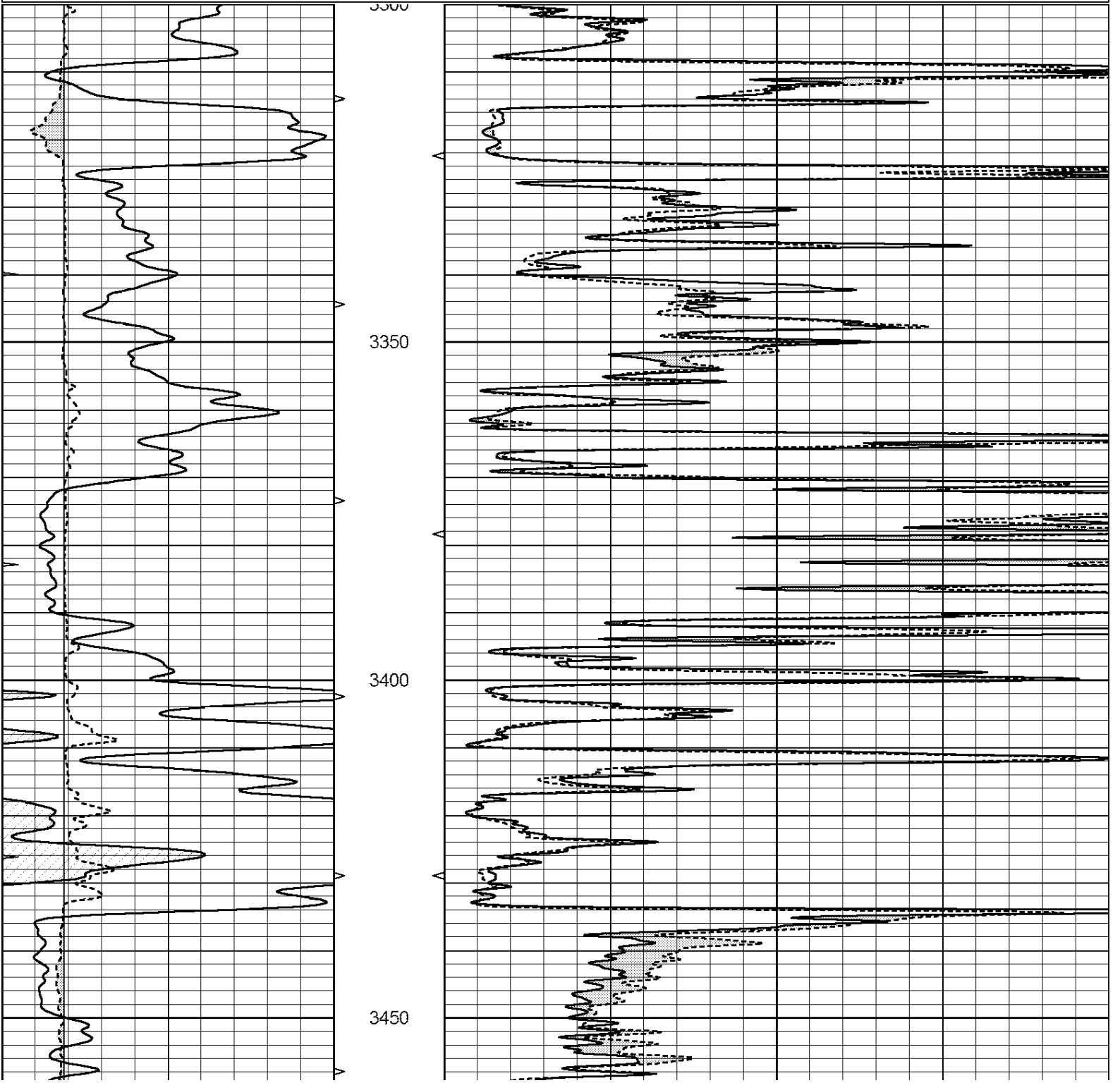
| | | | | | | |
|---|------------------|-----|----------|----|----------------|----|
| 0 | GAMMA RAY (GAPI) | 150 | ABHV | 0 | MEL1.5 (Ohm-m) | 40 |
| 6 | CALIPER (in) | 16 | 10 (ft3) | 0 | MEL2.0 (Ohm-m) | 40 |
| 0 | MINMK | 20 | TBHV | | | |
| | | | 0 (ft3) | 10 | | |

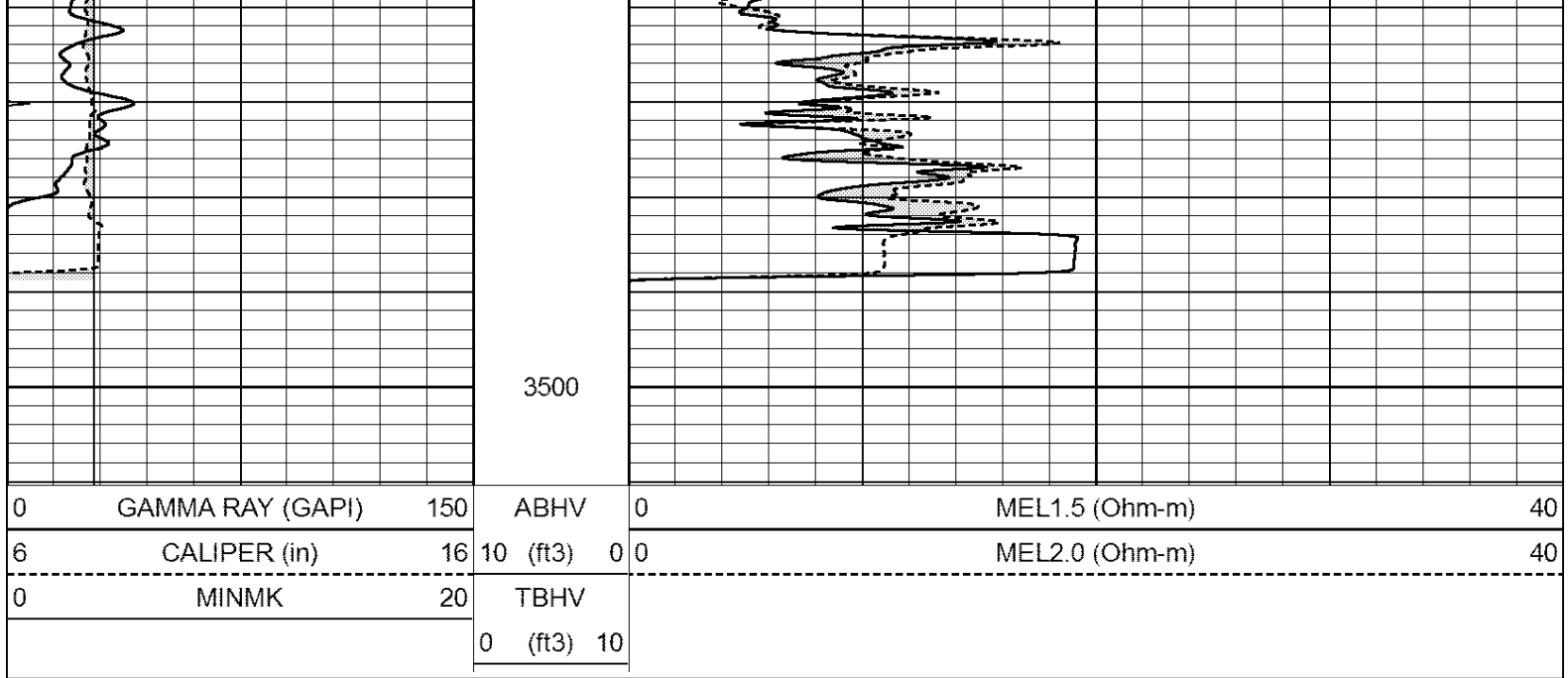


REPEAT SECTION

Database File: 2119ddn.db
 Dataset Pathname: pass6.1
 Presentation Format: _micro
 Dataset Creation: Thu Dec 14 13:00:51 2017 by Calc Open-Cased 090629
 Charted by: Depth in Feet scaled 1:240

| | | | | | | |
|---|------------------|-----|----------|----|----------------|----|
| 0 | GAMMA RAY (GAPI) | 150 | ABHV | 0 | MEL1.5 (Ohm-m) | 40 |
| 6 | CALIPER (in) | 16 | 10 (ft3) | 0 | MEL2.0 (Ohm-m) | 40 |
| 0 | MINMK | 20 | TBHV | | | |
| | | | 0 (ft3) | 10 | | |





Calibration Report

Database File: 2119ddn.db
 Dataset Pathname: pass6.1
 Dataset Creation: Thu Dec 14 13:00:51 2017 by Calc Open-Cased 090629

MICRO Calibration Report

Serial Number: MICRO6
 Tool Model: PROBE
 Performed: Wed Aug 16 17:13:39 2017

Caliper Calibration: Gain=3.960 Offset=4.551
 References Low Cal 7.000 High Cal 14.000
 Readings 0.555 2.323

1.5" Calibration: Gain=38.075 Offset=-0.400
 References Low Cal 0.000 High Cal 20.000
 Readings 0.004 1.196

2" Calibration: Gain=50.000 Offset=-1.000
 References Low Cal 0.000 High Cal 20.000
 Readings 0.006 0.913

Gamma Ray Calibration Report

Serial Number: GR2
 Tool Model: OPEN
 Performed: Wed Aug 16 17:13:40 2017

Calibrator Value: 1.0 GAPI
 Background Reading: 0.0 cps
 Calibrator Reading: 1.0 cps
 Sensitivity: 0.3800 GAPI/cps