



**COMPENSATED
DENSITY/NEUTRON
LOG**

Company ANCHOR BAY PETROLEUM, LLC.
Well BARBARA #1
Field WILD CAT
County ELLIS
State KANSAS

Company ANCHOR BAY PETROLEUM, LLC.
Well BARBARA #1
Field WILD CAT
County ELLIS State KANSAS

Location: API # : 15-051-26899-00-00
894' FSL & 542' FEL
SEC 2 TWP 11S RGE 17W
Permanent Datum GROUND LEVEL Elevation 1840'
Log Measured From KELLY BUSHING 8' A.G.L.
Drilling Measured From KELLY BUSHING
Other Services
DIL/MEL
SONIC
Elevation
K.B. 1848'
D.F. 1846
G.L. 1840

Date	12/14/17
Run Number	ONE
Depth Driller	3510
Depth Logger	3505
Bottom Logged Interval	3482
Top Log Interval	2700
Casing Driller	8 5/8" @ 221
Casing Logger	221
Bit Size	7 7/8"
Type Fluid in Hole	CHEMICAL MUD
Density / Viscosity	8.9/45
pH / Fluid Loss	8.5/9.6
Source of Sample	FLOWLINE
Rm @ Meas. Temp	.60@53
Rmt @ Meas. Temp	.45@53
Rmc @ Meas. Temp	.72@53
Source of Rmf / Rmc	MEASURED
Rm @ BHT	28@112
Time Circulation Stopped	2 HOURS
Time Logger on Bottom	///
Maximum Recorded Temperature	112F
Equipment Number	4010
Location	HAYS, KANSAS
Recorded By	GUS PFANENSTIEL
Witnessed By	ED GLASSMAN

<<< Fold Here >>>

All interpretations are opinions based on inferences from electrical or other measurements and we cannot and do not guarantee the accuracy or correctness of any interpretation, and we shall not, except in the case of gross or willful negligence on our part, be liable or responsible for any loss, costs, damages, or expenses incurred or sustained by anyone resulting from any interpretation made by any of our officers, agents or employees. These interpretations are also subject to our general terms and conditions set out in our current Price Schedule.

Comments

THANK YOU FOR USING ELI WIRELINE, HAYS, KS. (785) 628-6395

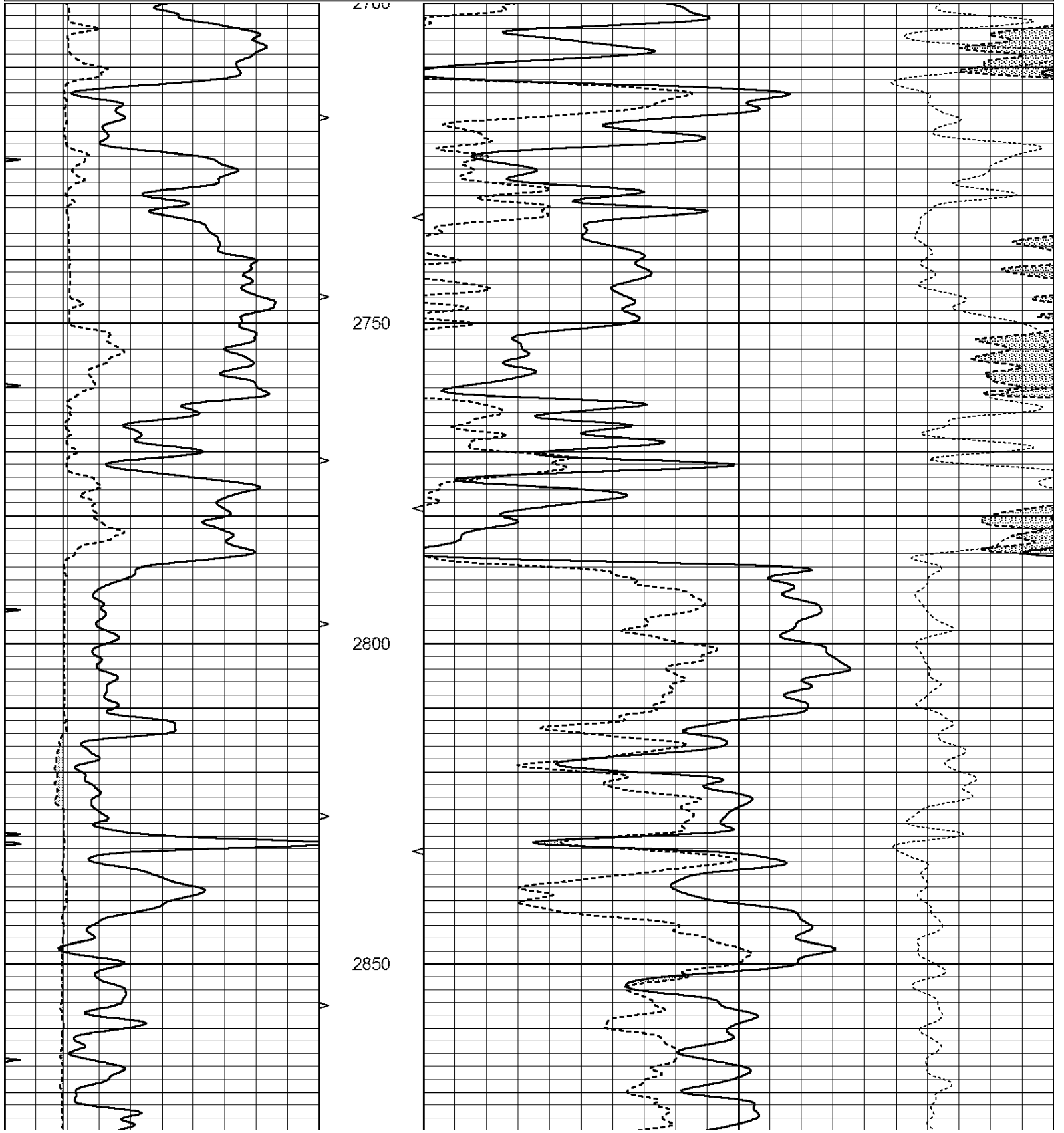
DIRECTIONS
SALINE RIVER RD. TO CODEL RD., 1 MILE NORTH
1 EAST, NORTH INTO.

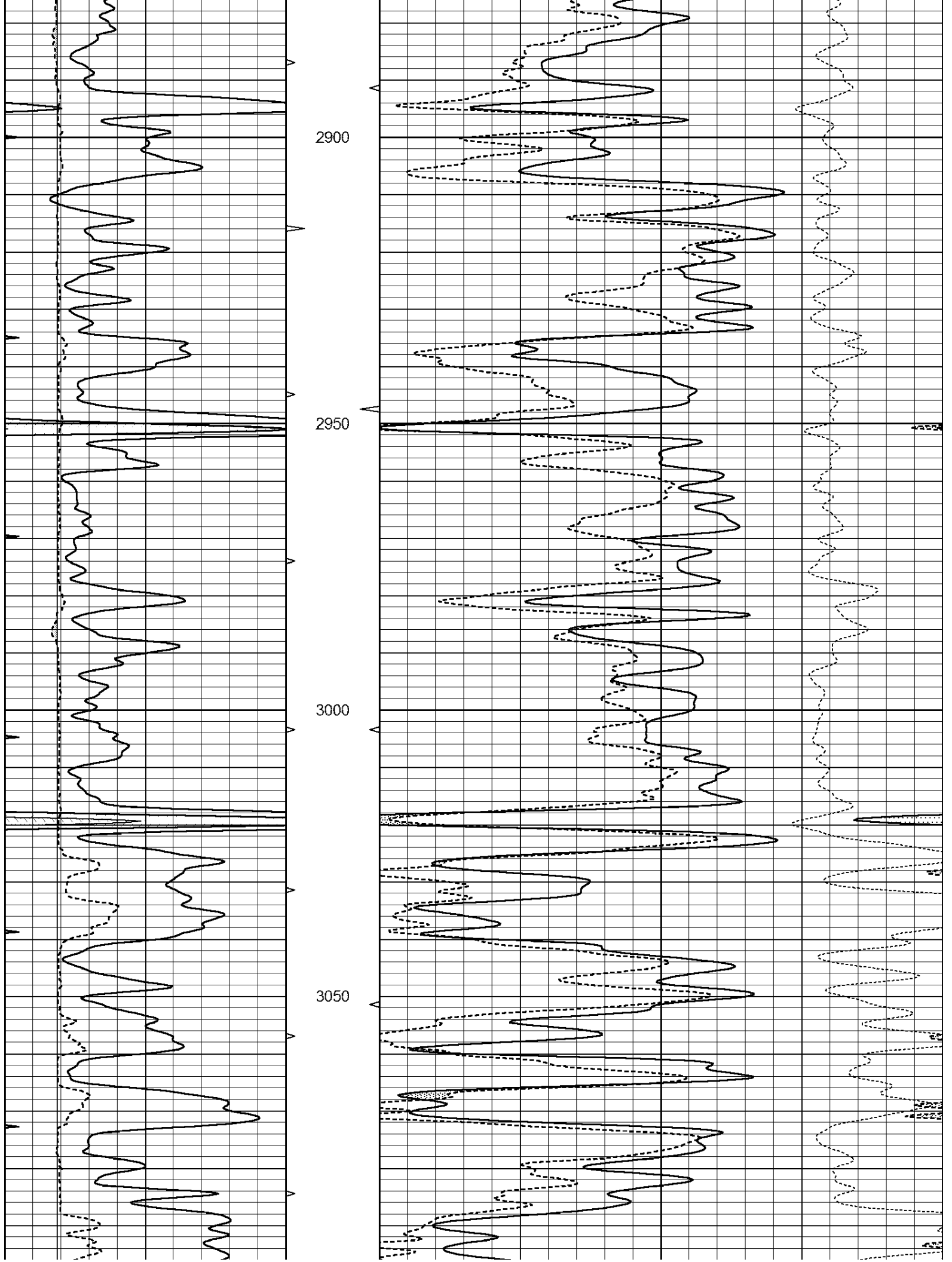


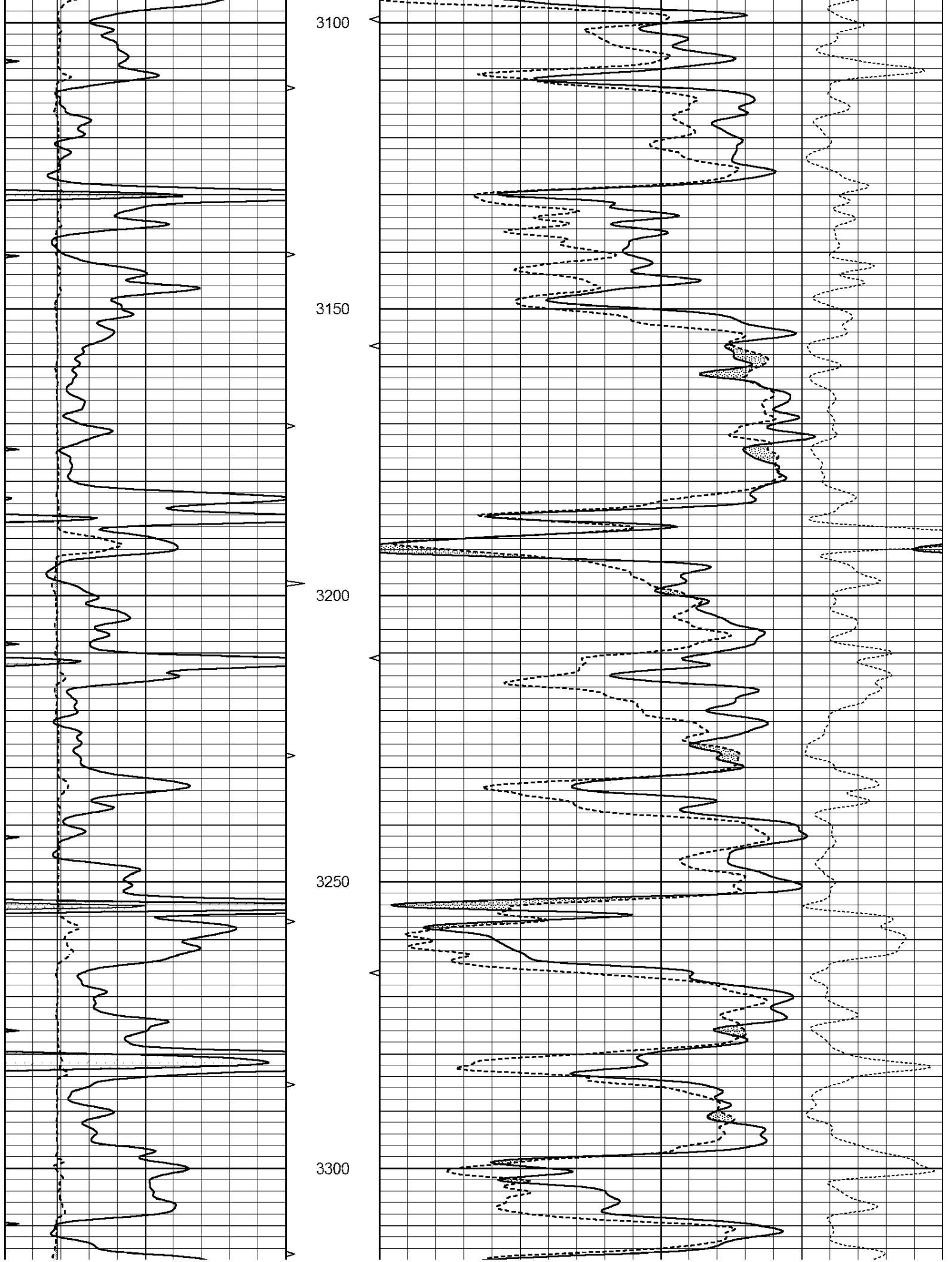
MAIN PASS

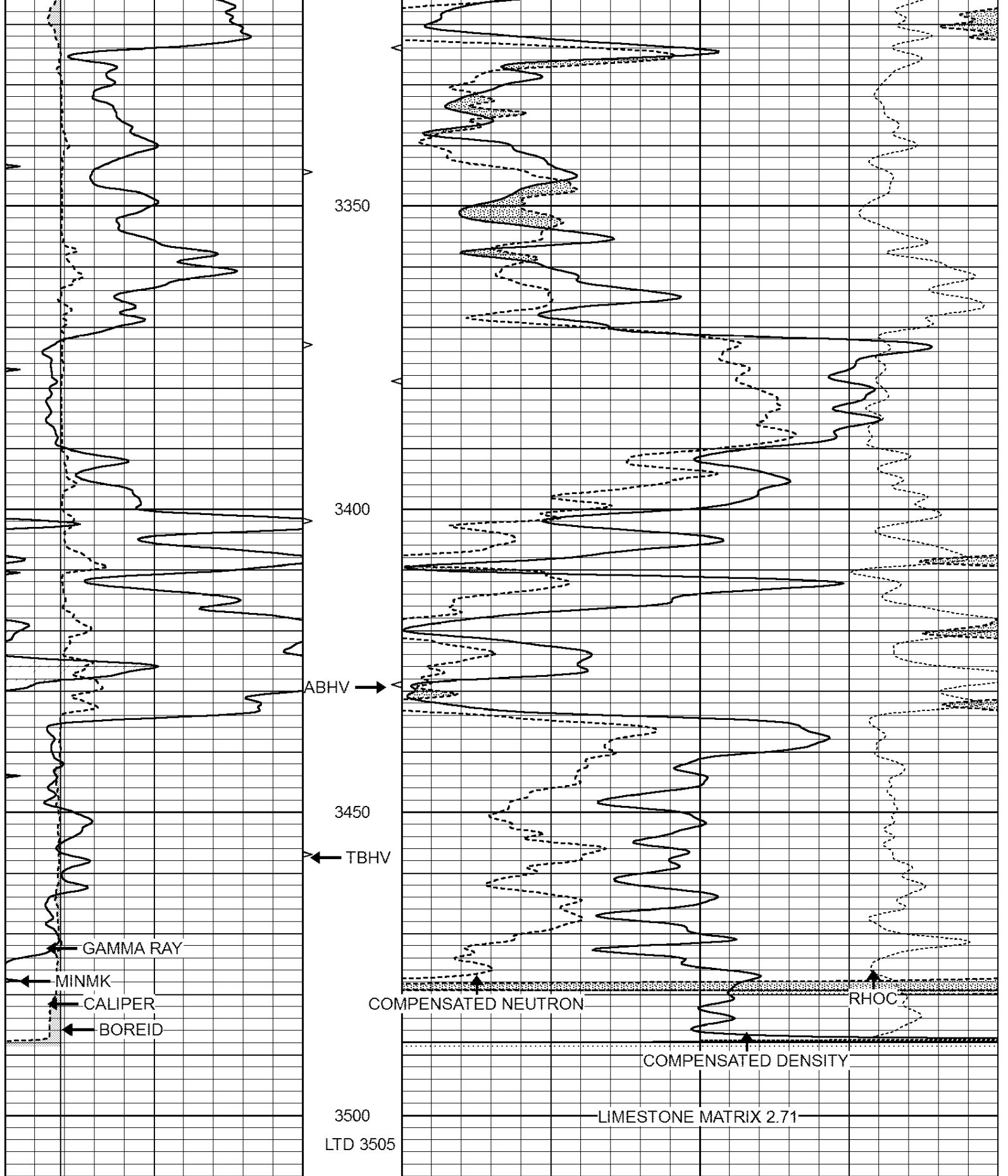
Database File: 2119ddn.db
 Dataset Pathname: pass5.1
 Presentation Format: den_neu
 Dataset Creation: Thu Dec 14 12:20:05 2017 by Calc Open-Cased 090629
 Charted by: Depth in Feet scaled 1:240

0	GAMMA RAY (GAPI)	150	ABHV	30	COMPENSATED DENSITY (pu)	-10
6	CALIPER (in)	16	10 (ft3)	0 30	COMPENSATED NEUTRON (pu)	-10
0	MINMK	20	TBHV		-0.25 CORRECTION (g/cc)	0.25
			0 (ft3)	10		

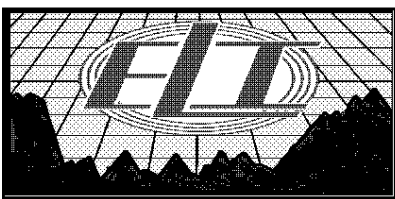








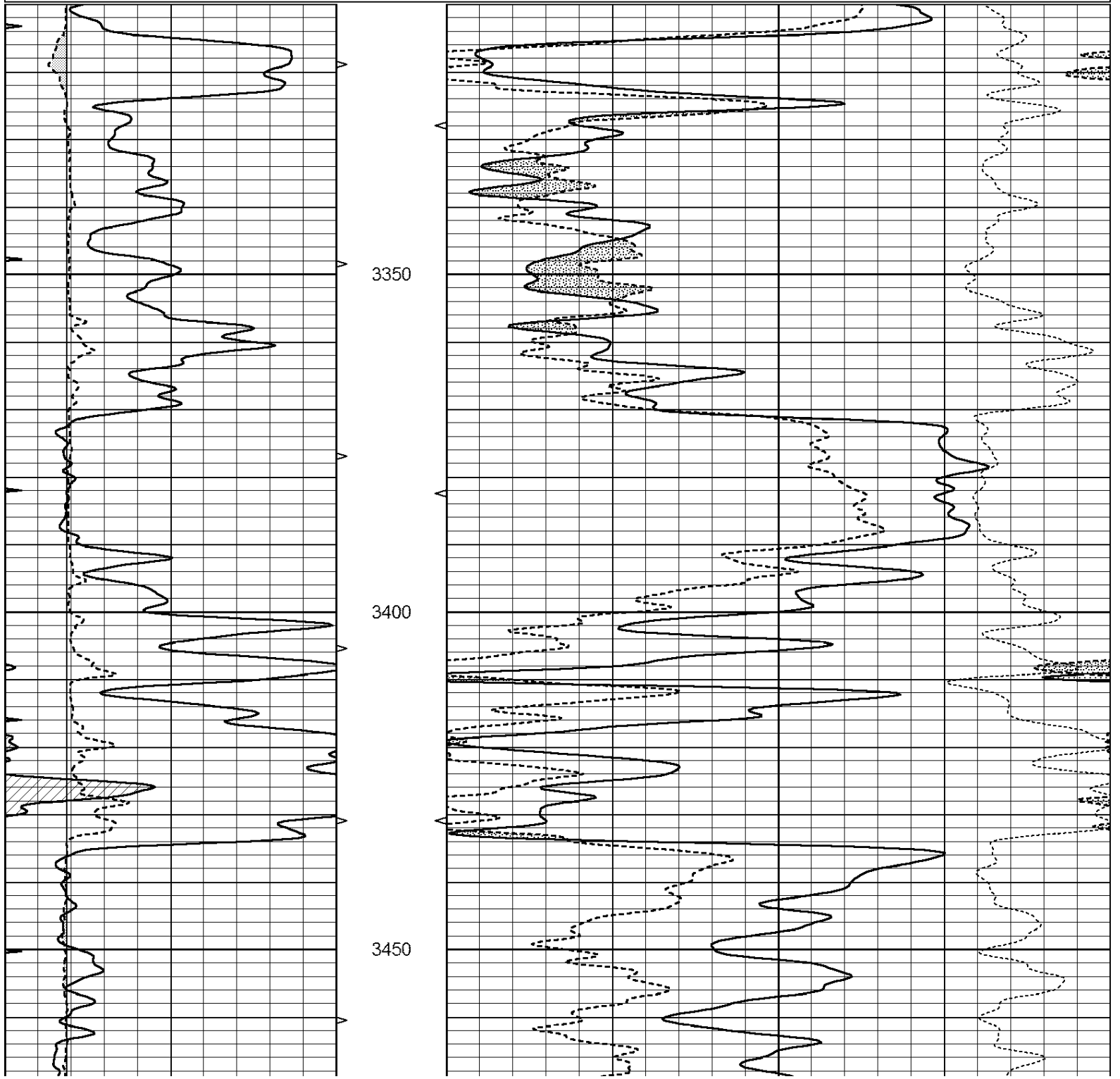
0	GAMMA RAY (GAPI)	150	ABHV	30	COMPENSATED DENSITY (pu)	-10
6	CALIPER (in)	16	10 (ft3)	0 30	COMPENSATED NEUTRON (pu)	-10
0	MINMK	20	TBHV		-0.25 CORRECTION (g/cc)	0.25
			0 (ft3)	10		

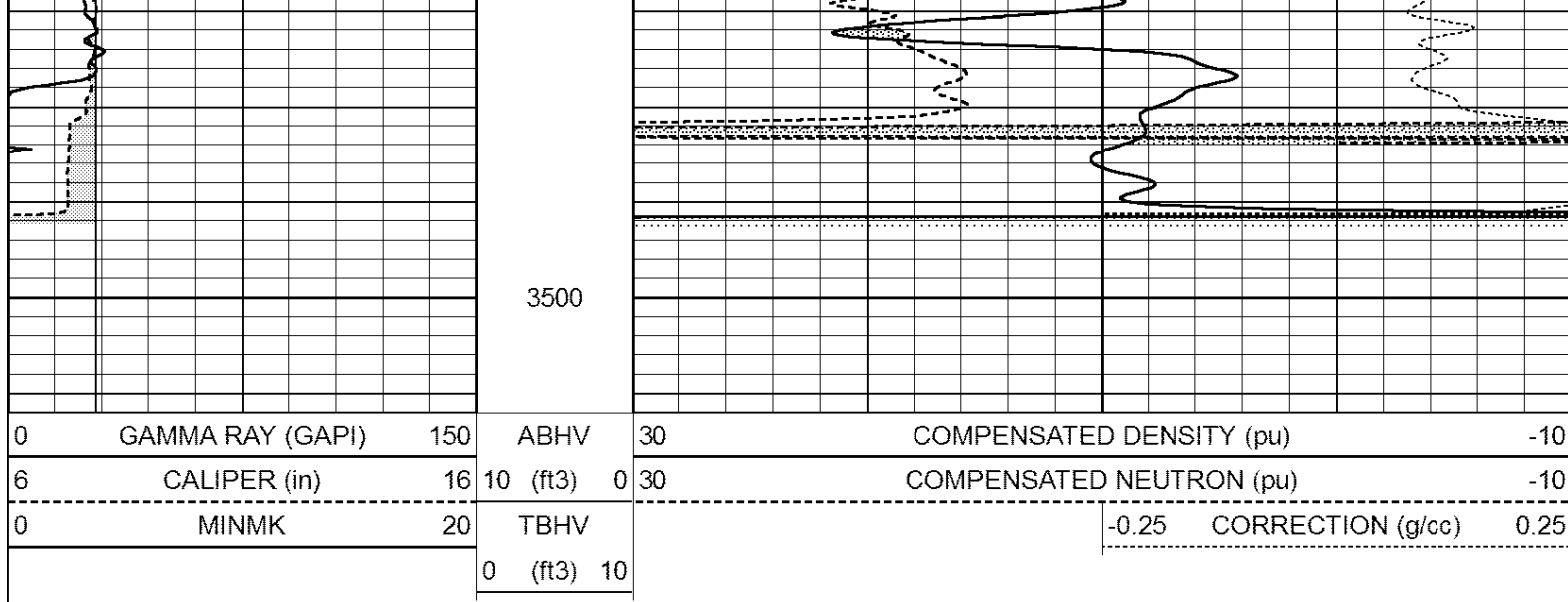


REPEAT SECTION

Database File: 2119ddn.db
 Dataset Pathname: pass2.1
 Presentation Format: den_neu
 Dataset Creation: Thu Dec 14 11:37:06 2017 by Calc Open-Cased 090629
 Charted by: Depth in Feet scaled 1:240

0	GAMMA RAY (GAPI)	150	ABHV	30	COMPENSATED DENSITY (pu)	-10
6	CALIPER (in)	16	10 (ft3)	0 30	COMPENSATED NEUTRON (pu)	-10
0	MINMK	20	TBHV		-0.25 CORRECTION (g/cc)	0.25
			0 (ft3)	10		





Calibration Report

Database File: pe2.db
 Dataset Pathname: pass2
 Dataset Creation: Mon Aug 21 11:58:02 2017 by Log Open-Cased 090629

Dual Induction Calibration Report

Serial-Model: PROBE8-DILG
 Surface Cal Performed: Mon Aug 21 11:58:18 2017
 Downhole Cal Performed: Mon Aug 21 11:58:21 2017
 After Survey Verification Performed: Mon Aug 21 11:58:23 2017

Surface Calibration

Loop:	Readings				References		Results	
	Air	Loop			Air	Loop	m	b
Deep	0.015	0.648	V	0.000	400.000	mmho/m	620.000	0.000
Medium	0.029	0.796	V	0.000	464.000	mmho/m	590.000	-12.000
Internal:	Zero	Cal		Zero	Cal		m	b
Deep	0.017	0.657	V	0.000	400.000	mmho/m	625.153	-10.619
Medium	0.016	0.757	V	0.000	464.000	mmho/m	625.992	-9.739

Downhole Calibration

	Readings				References		Results	
	Zero	Cal			Zero	Cal	m'	b'
Deep	0.000	0.000	mmho/m	2.011	405.777	mmho/m	1.000	0.000
Medium	0.000	0.000	mmho/m	7.590	503.393	mmho/m	1.000	0.000
LL3		7.500	V		1500.000	Ohm-m		
		0.000	V		20.000	Ohm-m		
		-7.200	V		3800.000	mmho-m		

After Survey Verification

	Readings				Targets		Results	
	Zero	Cal			Zero	Cal	m'	b'
Deep	0.000	0.000	mmho/m	0.000	0.000	mmho/m	0.000	0.000
Medium	0.000	0.000	mmho/m	0.000	0.000	mmho/m	0.000	0.000
LL3		1.000	Ohm-m		1.000	Ohm-m		
		0.000	Ohm-m		0.000	Ohm-m		
		1.000	mmho-m		1.000	mmho-m		

Master Calibration

Performed Mon Aug 21 11:56:41 2017

	Background	Magnesium	Aluminum	Sandstone	
Window 1	833.6	7394.2	2287.3	8111.8	cps
Window 2	768.9	6322.3	1995.6	6800.0	cps
Window 3	621.5	3261.9	1186.4	3380.9	cps
Window 4	184.2	185.7	184.9	184.8	cps
Long Space	0.0	5553.4	1226.6	6031.1	cps
Short Space	1.2	1307.5	903.9	1387.7	cps
Rho		1.7100	2.5900	1.3800	g/cc
Pe		0.0000	2.5700	1.5500	
Rib Angle	: 46.3	Rib Slope	: 1.045	Density/Spine Ratio	: 0.566
Spine Angle	: 76.3	Spine Slope	: 4.090	Spine Intercept	: -20.7

Before Survey Verification

Performed Wed Dec 31 18:00:00 1969

Window 1	0.0	0.0	0.0	0.0	cps
Window 2	0.0	0.0	0.0	0.0	cps
Window 3	0.0	0.0	0.0	0.0	cps
Window 4	0.0	0.0	0.0	0.0	cps
Long Space	0.0	0.0	0.0	0.0	cps
Short Space	0.0	0.0	0.0	0.0	cps
Measured Rho		0.0000	0.0000	0.0000	g/cc
Measured Correction		0.0000	0.0000	0.0000	g/cc
Measured Pe			0.0000	0.0000	

After Survey Verification

Performed Wed Dec 31 18:00:00 1969

Window 1	0.0	0.0	0.0	0.0	cps
Window 2	0.0	0.0	0.0	0.0	cps
Window 3	0.0	0.0	0.0	0.0	cps
Window 4	0.0	0.0	0.0	0.0	cps
Long Space	0.0	0.0	0.0	0.0	cps
Short Space	0.0	0.0	0.0	0.0	cps
Measured Rho		0.0000	0.0000	0.0000	g/cc
Measured Correction		0.0000	0.0000	0.0000	g/cc
Measured Pe			0.0000	0.0000	

Compensated Neutron Calibration Report

Serial Number: 6I
 Tool Model: G

CALIBRATION

Detector	Readings	Target	Normalization
Short Space	1.00 cps	1.00 cps	1.0000
Long Space	1.00 cps	1.00 cps	1.0000

PRE-SURVEY VERIFICATION

Detector	Readings	Measured	Target
1) Short Space	cps		
Long Space	cps	pu	pu

2)	Short Space Long Space	cps cps	pu
3)	Short Space Long Space	cps cps	pu

POST-SURVEY VERIFICATION				
	Detector	Readings	Measured	Target
1)	Short Space Long Space	cps cps	pu	pu
2)	Short Space Long Space	cps cps	pu	pu
3)	Short Space Long Space	cps cps	pu	pu

Gamma Ray Calibration Report

Serial Number:	GR6
Tool Model:	OPEN
Performed:	Mon Aug 21 11:59:01 2017
Calibrator Value:	150.0 GAPI
Background Reading:	0.0 cps
Calibrator Reading:	276.0 cps
Sensitivity:	0.5500 GAPI/cps