



# SONIC LOG

Company ANCHOR BAY PETROLEUM, LLC.  
 Well BARBARA #1  
 Field WILDCAT  
 County ELLIS  
 State KANSAS

Company ANCHOR BAY PETROLEUM, LLC.  
 Well BARBARA #1  
 Field WILDCAT  
 County ELLIS State KANSAS

Location: API # : 15-051-26899-00-00  
 894' FSL & 542' FEL  
 SEC 2 TWP 11S RGE 17W  
 Permanent Datum GROUND LEVEL Elevation 1840'  
 Log Measured From KELLY BUSHING 8' A.G.L.  
 Drilling Measured From KELLY BUSHING  
 Other Services CDL/CNL/DIL MEL  
 Elevation K.B. 1848'  
 D.F. 1846'  
 G.L. 1840'

Date	12/14/17
Run Number	TWO
Depth Driller	3510
Depth Logger	3505
Bottom Logged Interval	3596
Top Log Interval	00
Casing Driller	8 5/8" @ 221
Casing Logger	221
Bit Size	7 7/8"
Type Fluid in Hole	CHEMICAL MUD
Density / Viscosity	8.9/45
pH / Fluid Loss	8.5/9.6
Source of Sample	FLOWLINE
Rm @ Meas. Temp	.60@53
Rmt @ Meas. Temp	.45@53
Rmc @ Meas. Temp	.72@53
Source of Rmf / Rmc	MEASURED
Rm @ BHT	28@112
Time Circulation Stopped	2 HOURS
Time Logger on Bottom	///
Maximum Recorded Temperature	112F
Equipment Number	4010
Location	HAYS, KANSAS
Recorded By	GUS PFANENSTIEL
Witnessed By	ED GLASSMAN

<<< Fold Here >>>

All interpretations are opinions based on inferences from electrical or other measurements and we cannot and do not guarantee the accuracy or correctness of any interpretation, and we shall not, except in the case of gross or willful negligence on our part, be liable or responsible for any loss, costs, damages, or expenses incurred or sustained by anyone resulting from any interpretation made by any of our officers, agents or employees. These interpretations are also subject to our general terms and conditions set out in our current Price Schedule.

### Comments

THANK YOU FOR USING ELI WIRELINE, HAYS, KS. (785) 628-6395

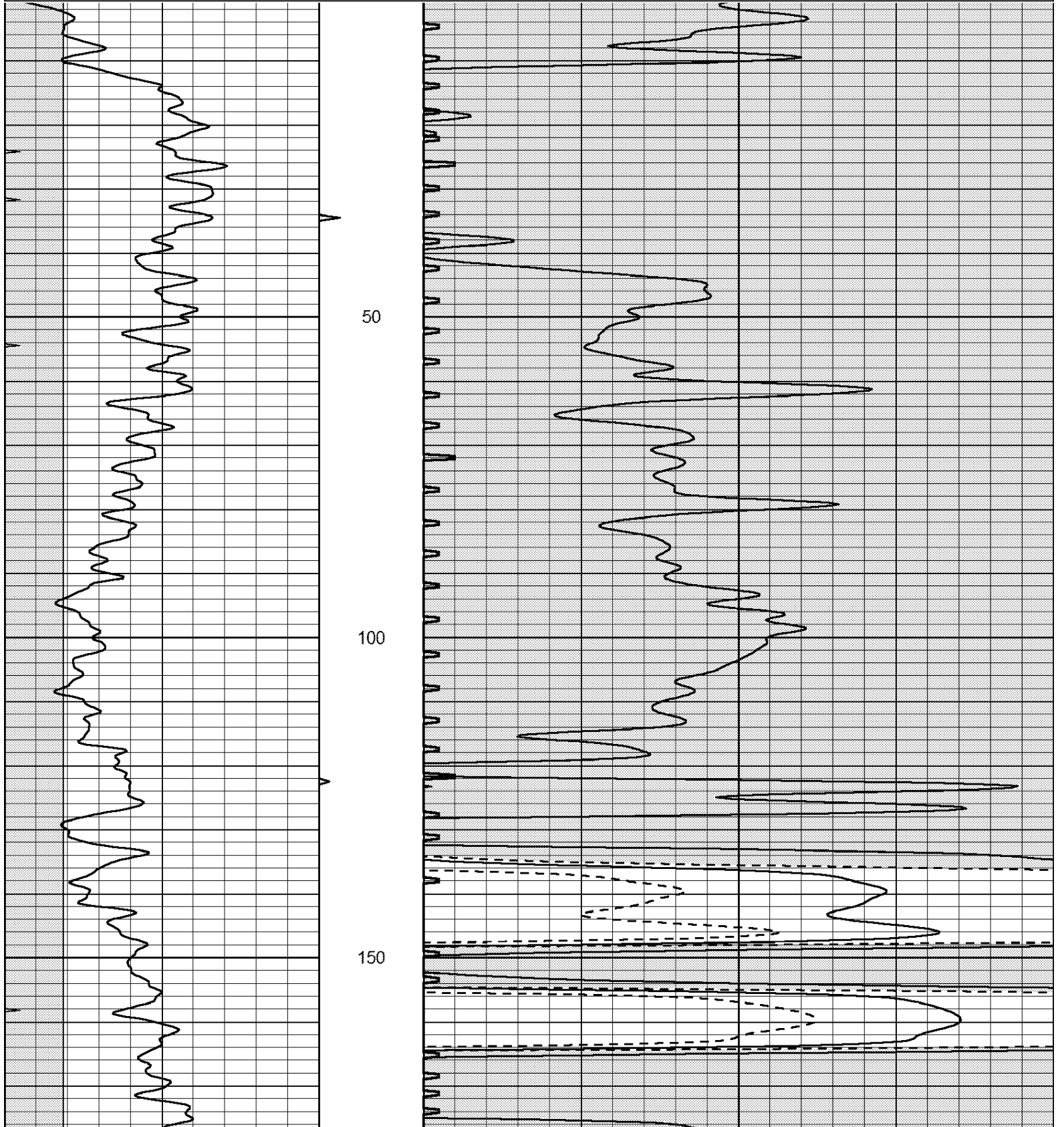
DIRECTIONS  
 SALINE RIVER RD. TO CODEL RD., 1 MILE NORTH  
 1 EAST, NORTH INTO.

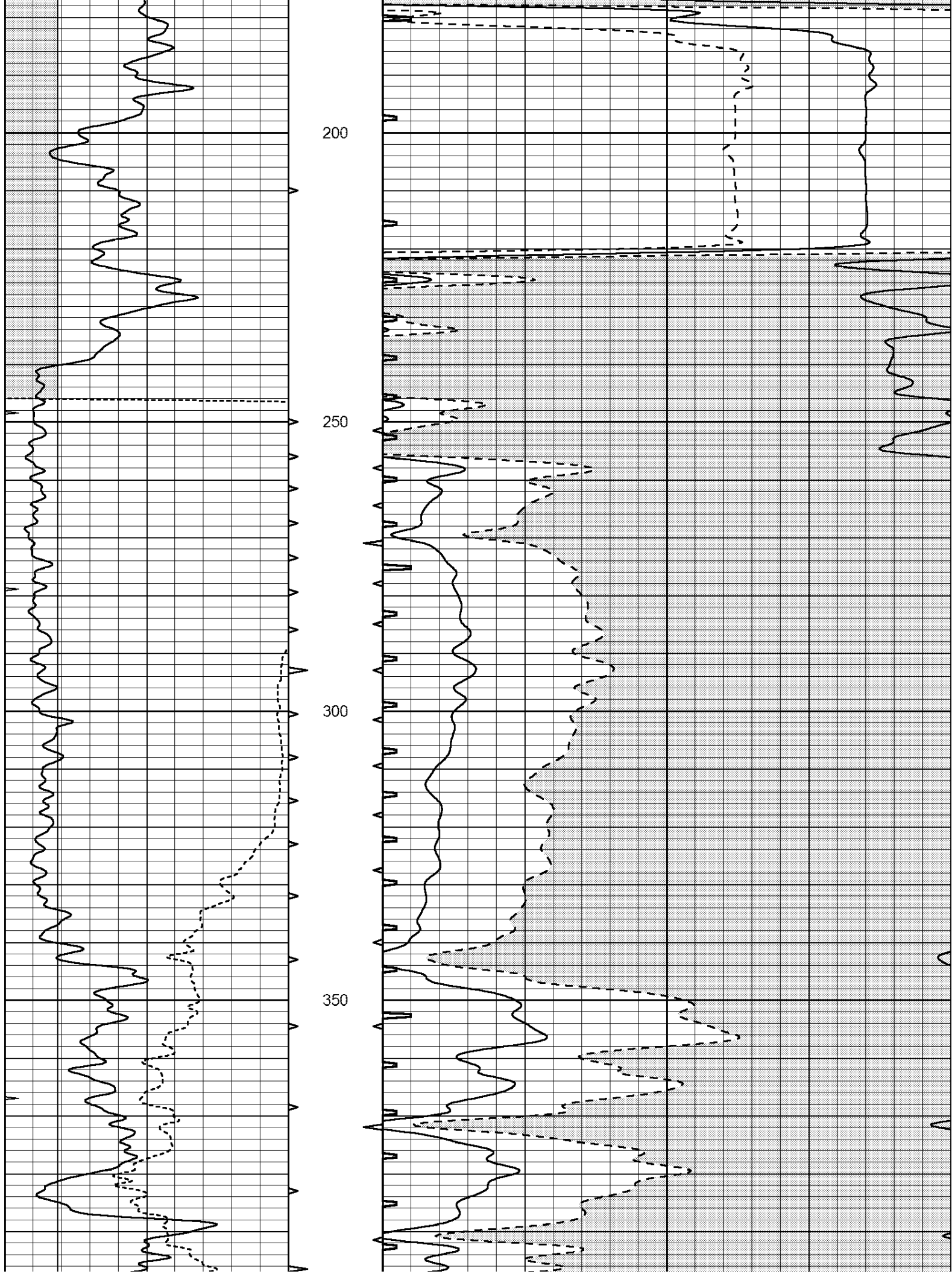


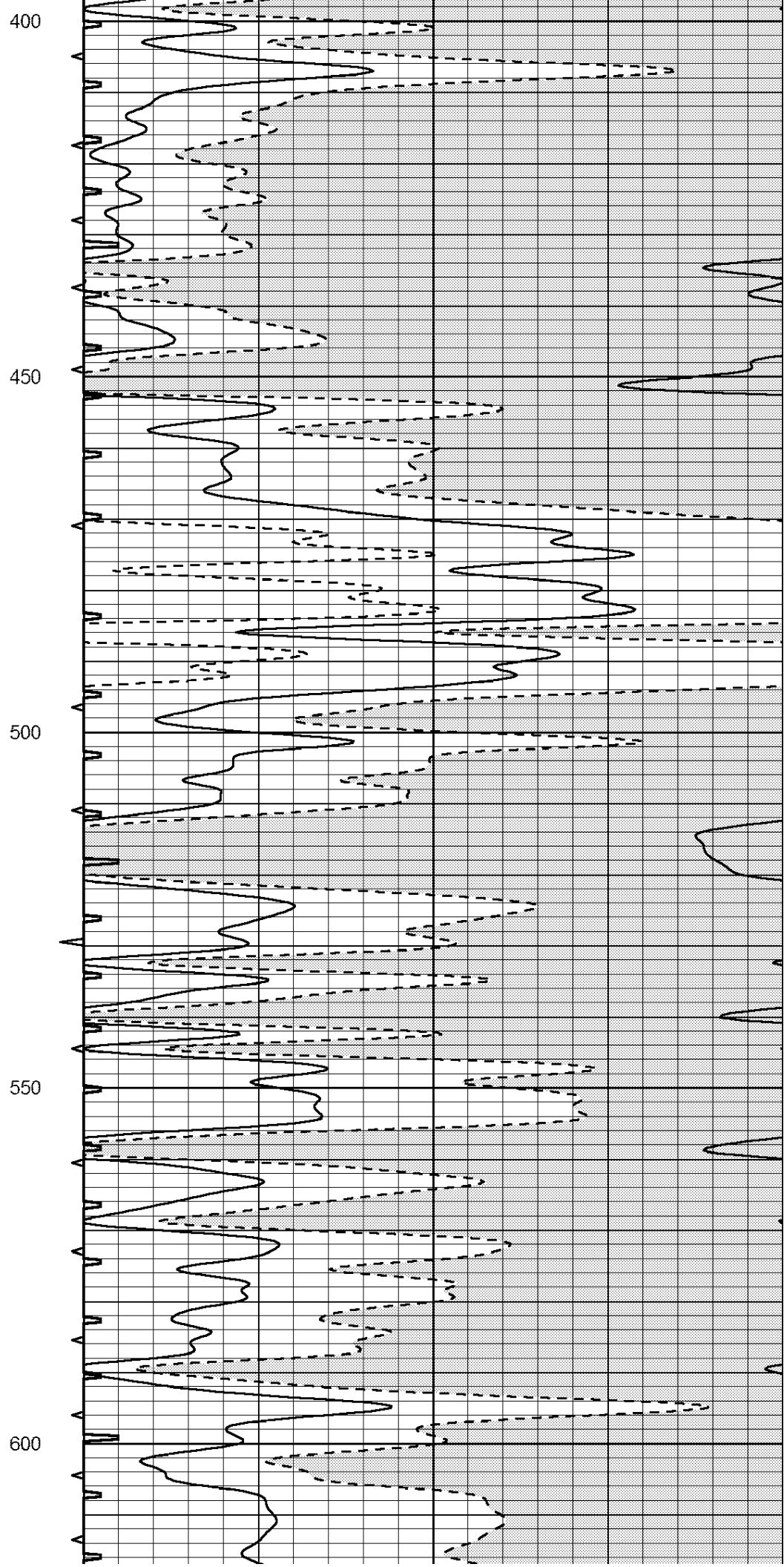
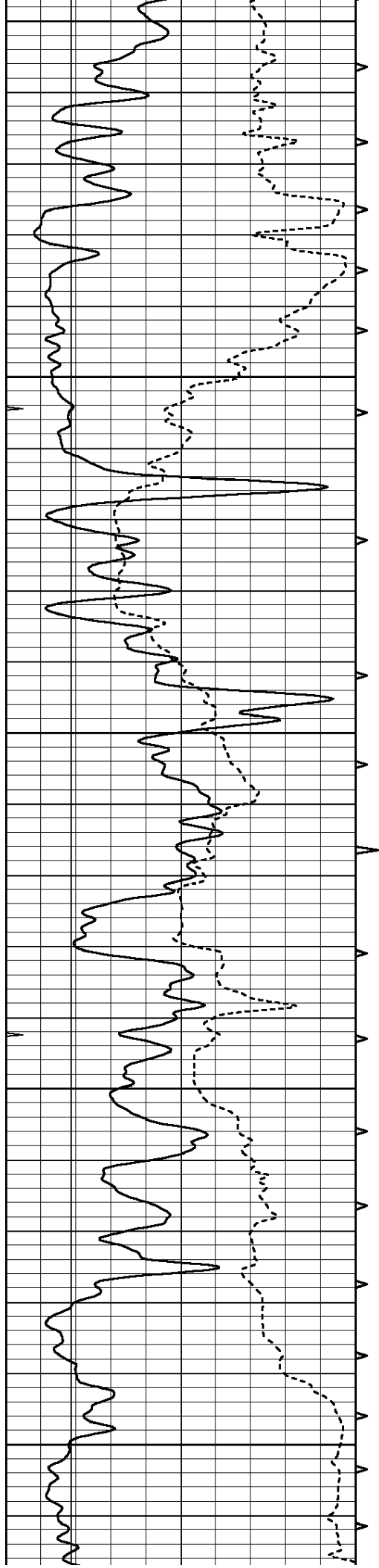
# MAIN PASS

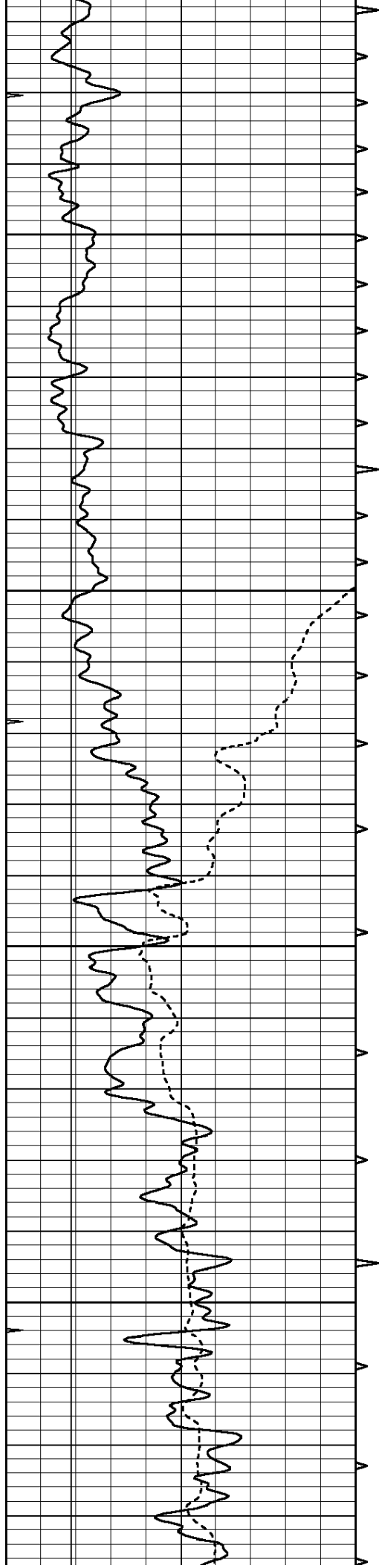
Database File: 2119ddn.db  
 Dataset Pathname: pass7  
 Presentation Format: \_slt  
 Dataset Creation: Thu Dec 14 12:34:13 2017 by Log Open-Cased 090629  
 Charted by: Depth in Feet scaled 1:240

0	GAMMA RAY (GAPI)	150	ABHV	140	DELTA TIME (usec/ft)	40	
6	CALIPER (in)	16	10 (ft3)	0	30	SONIC POROSITY (pu)	-10
0	MINMK	20	TBHV	0	ITT (msec)	20	
			0 (ft3)	10			







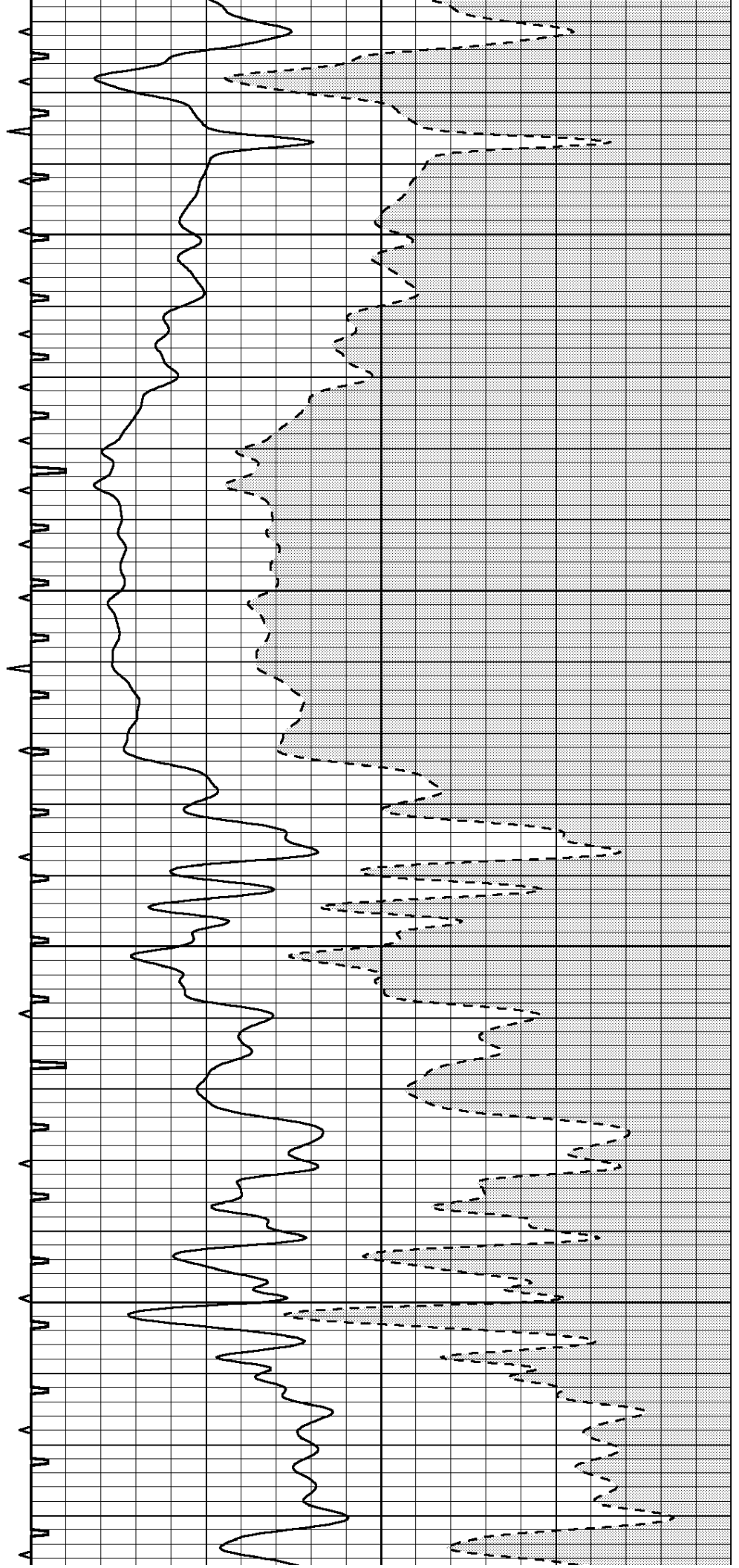


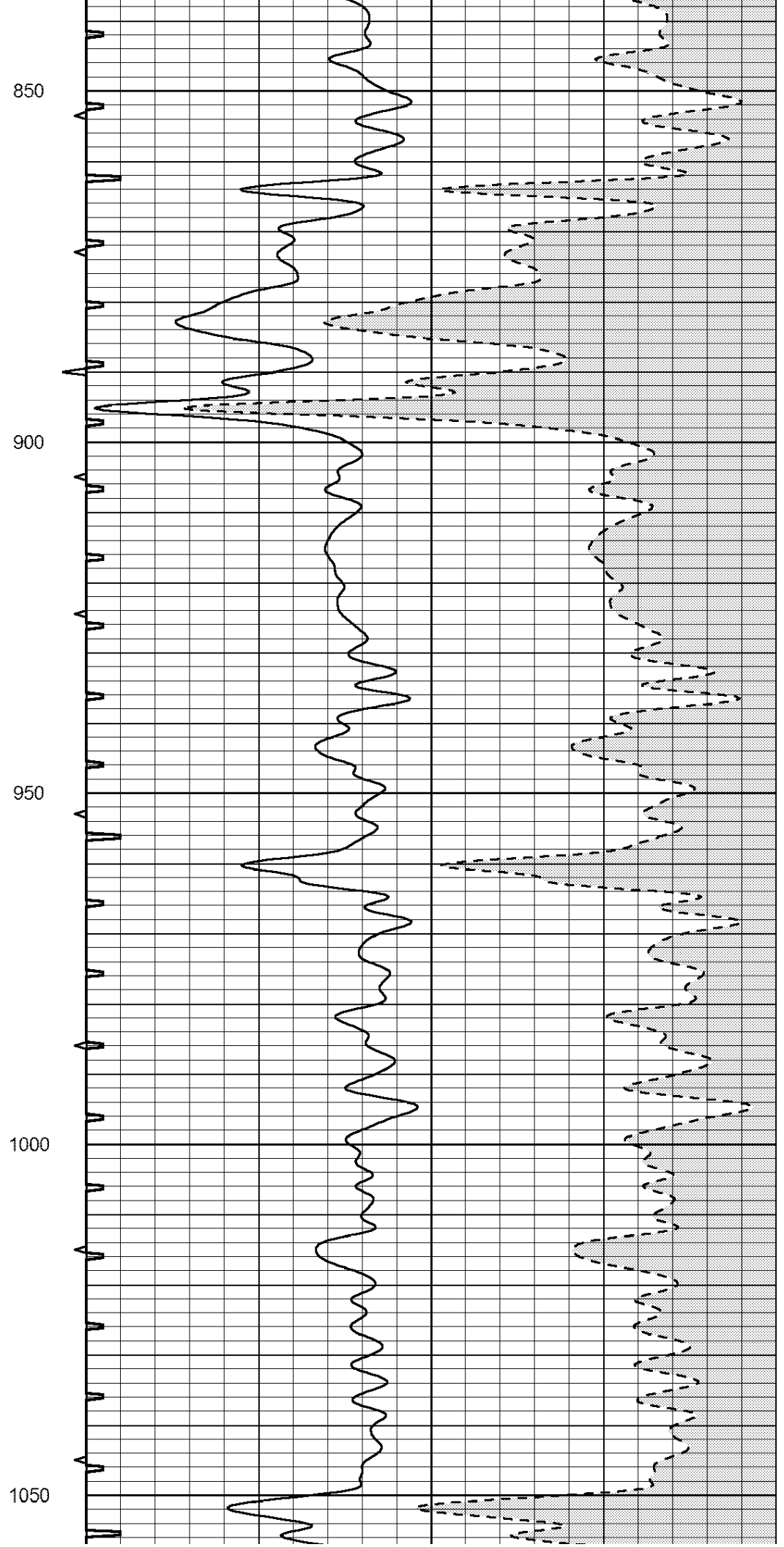
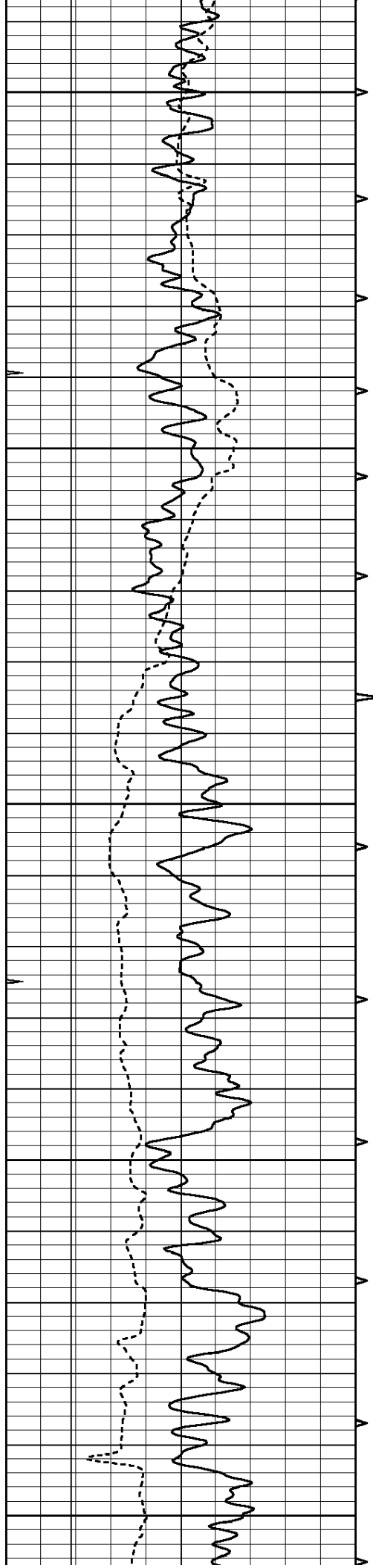
650

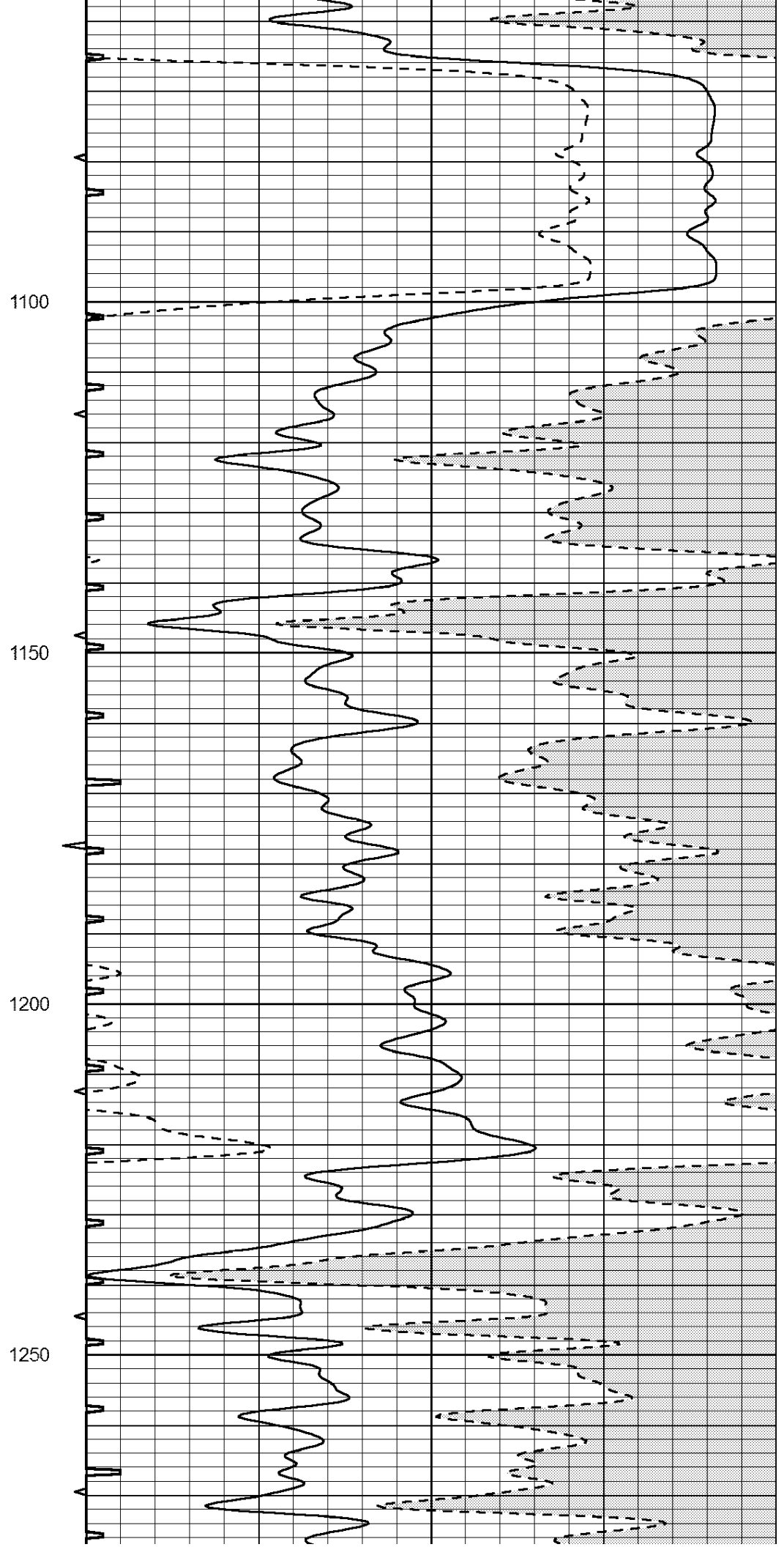
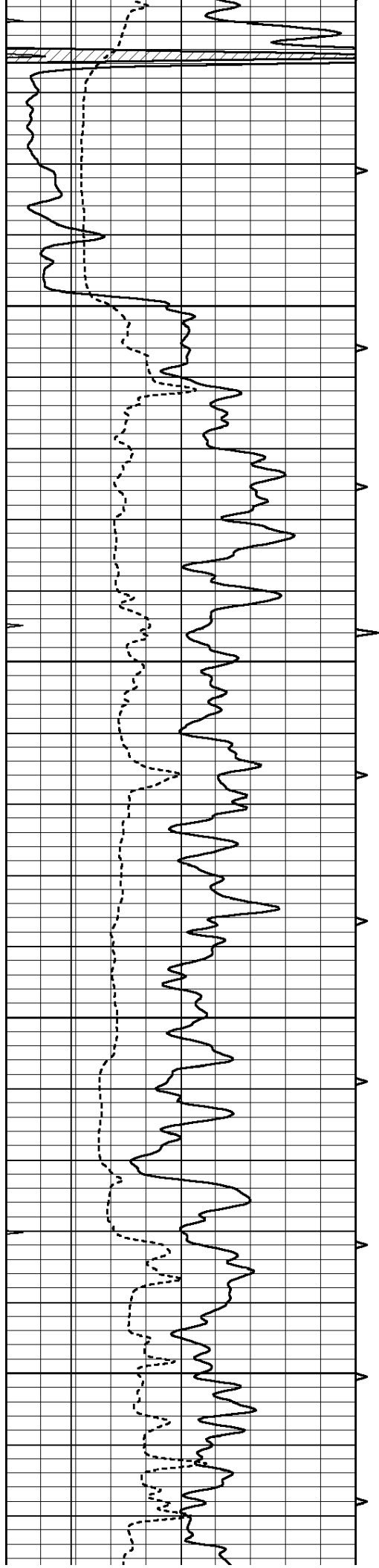
700

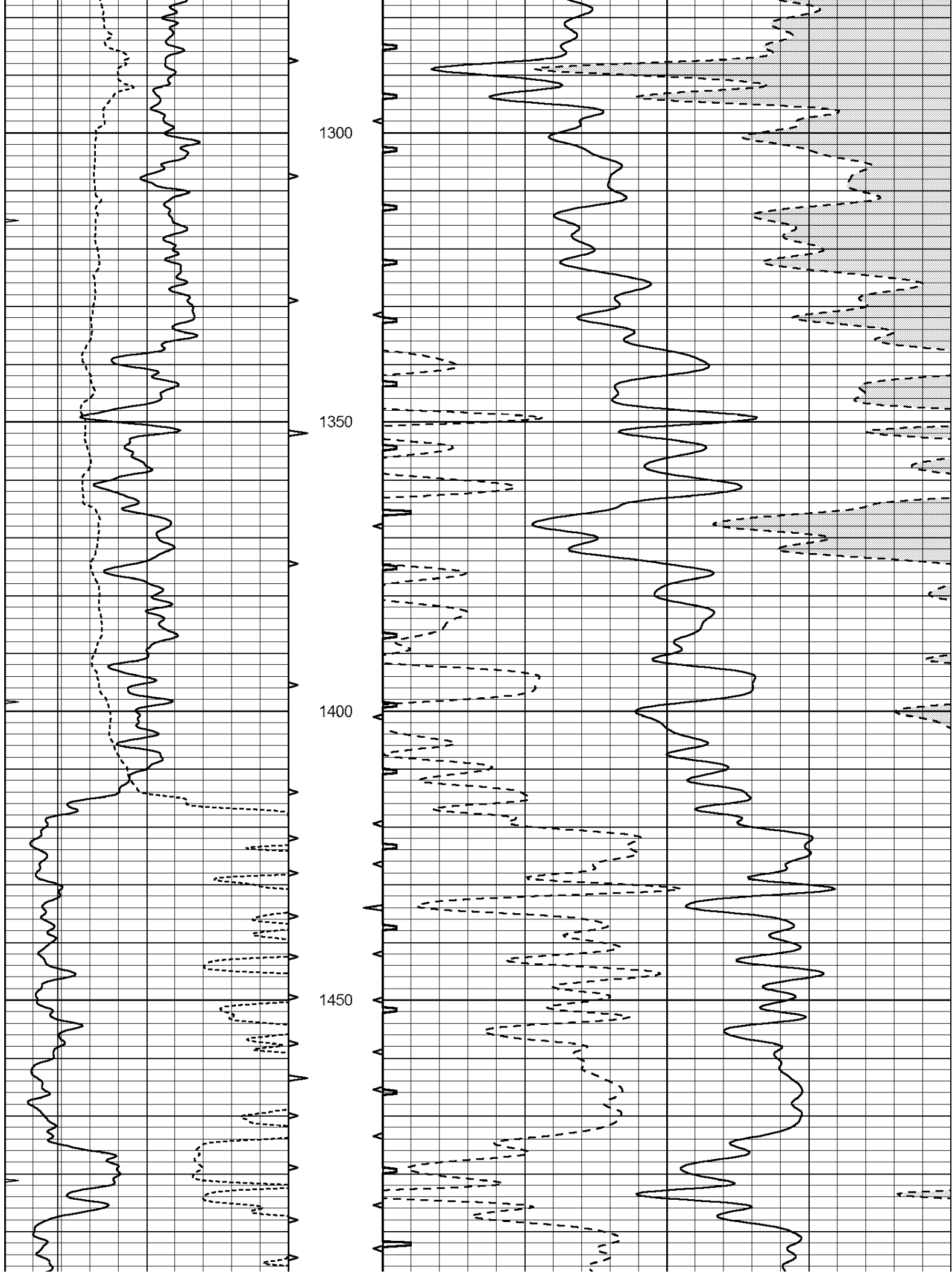
750

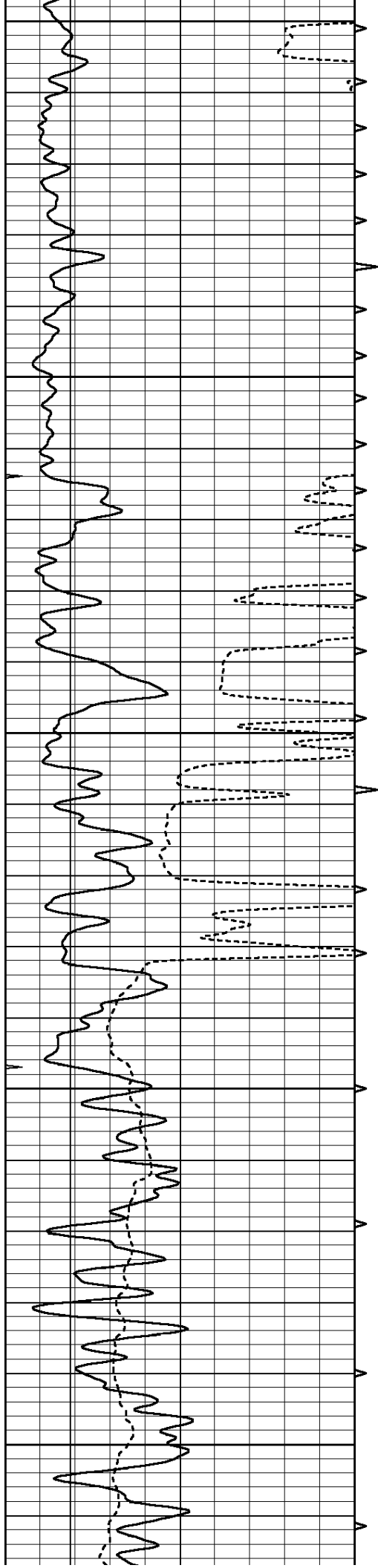
800











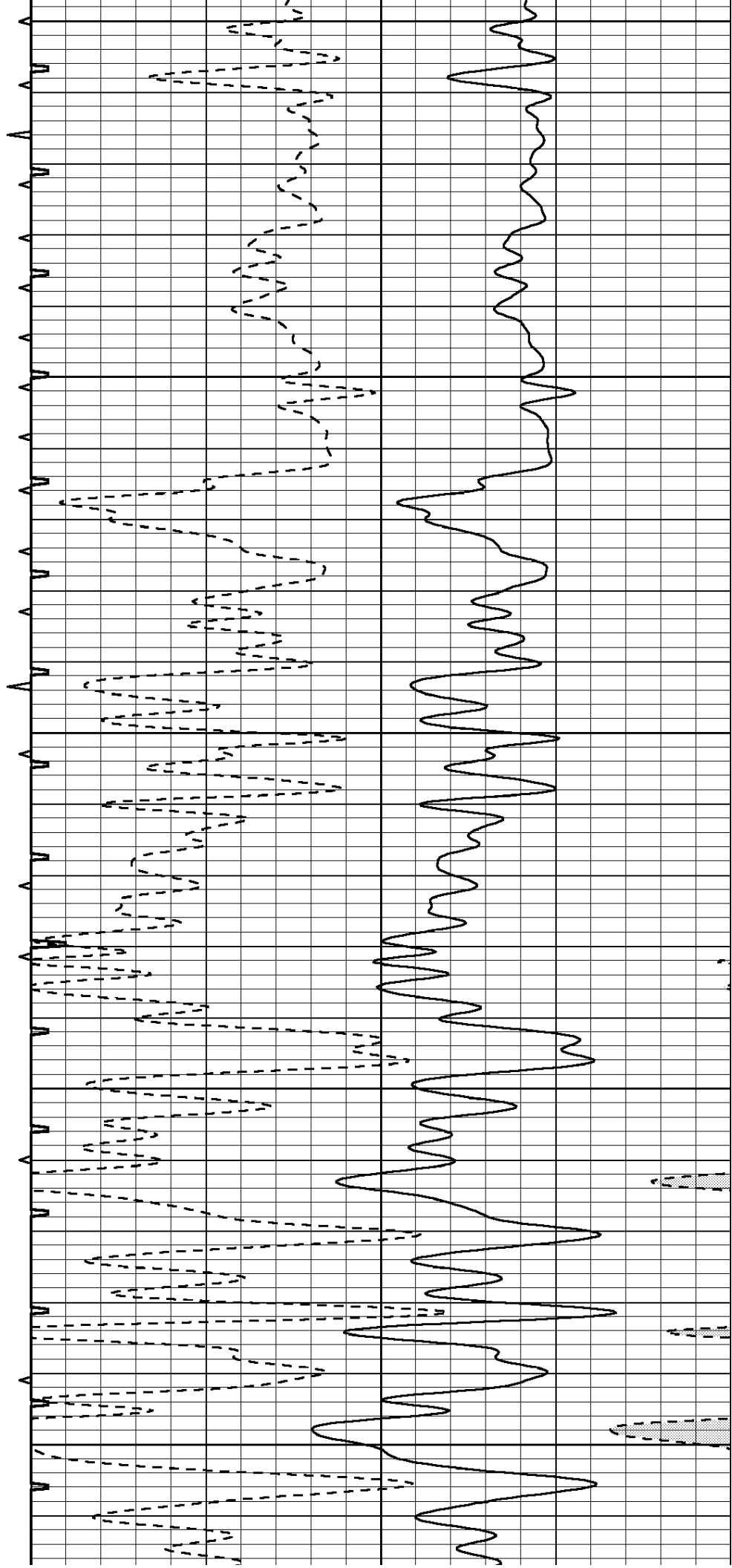
1500

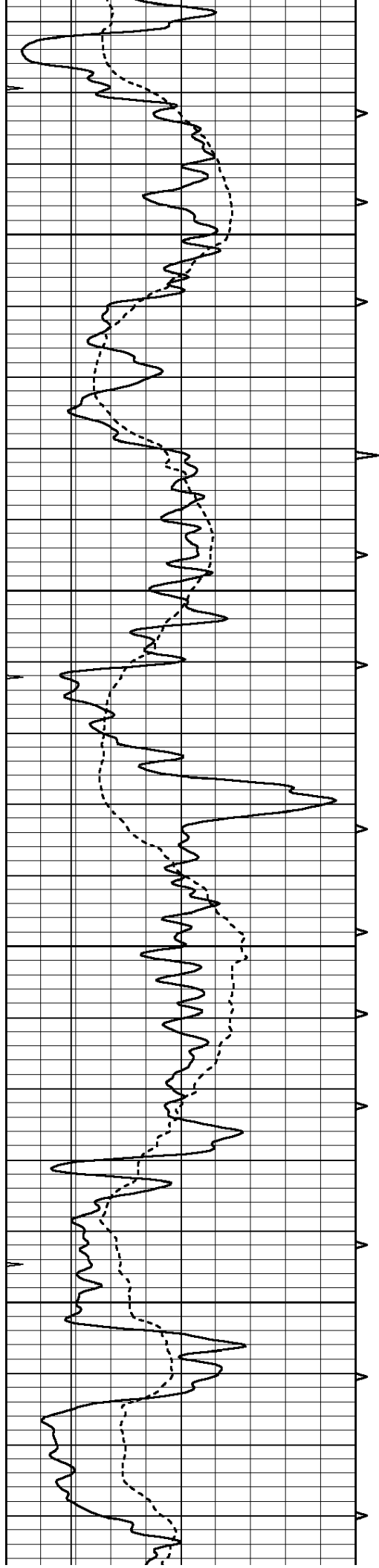
1550

1600

1650

1700



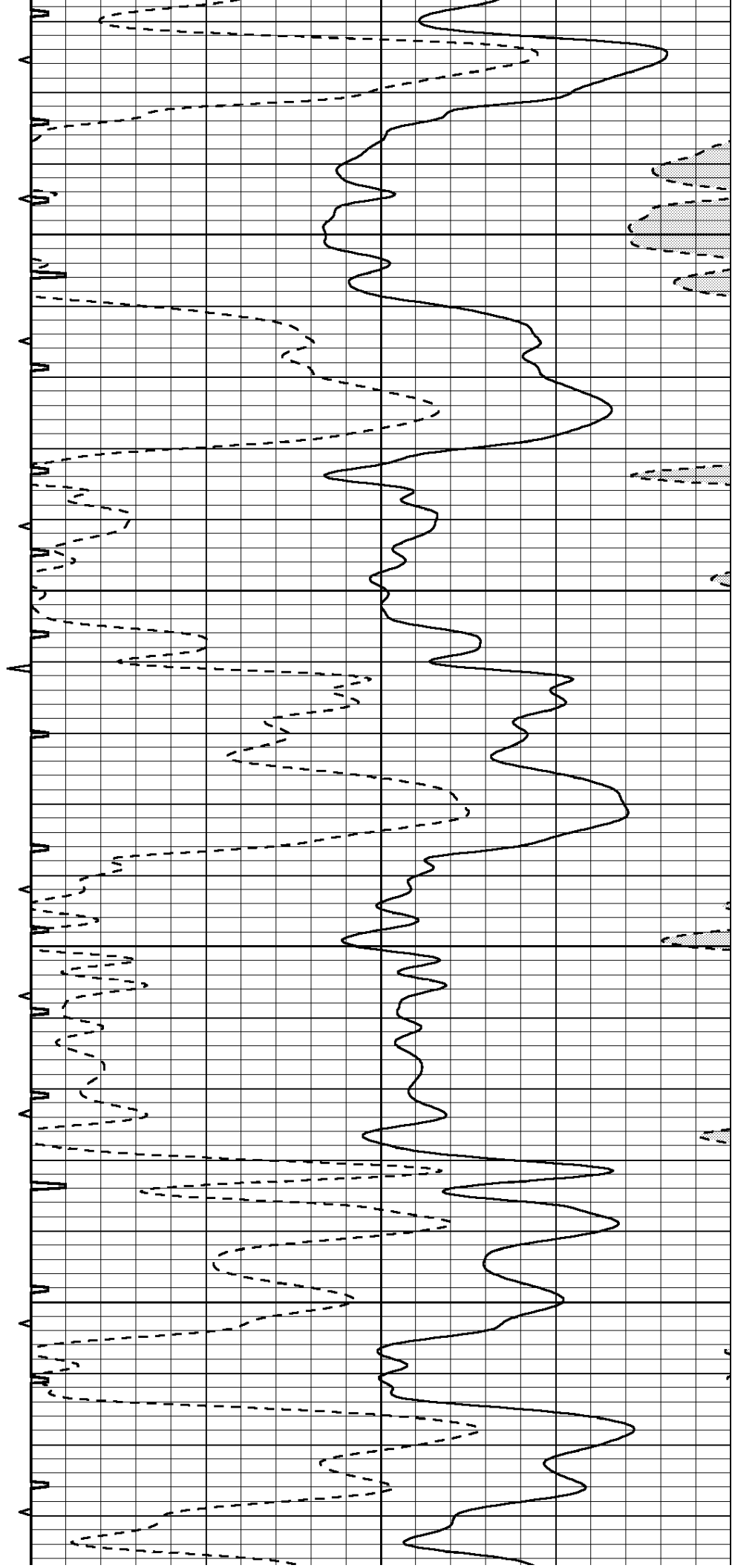


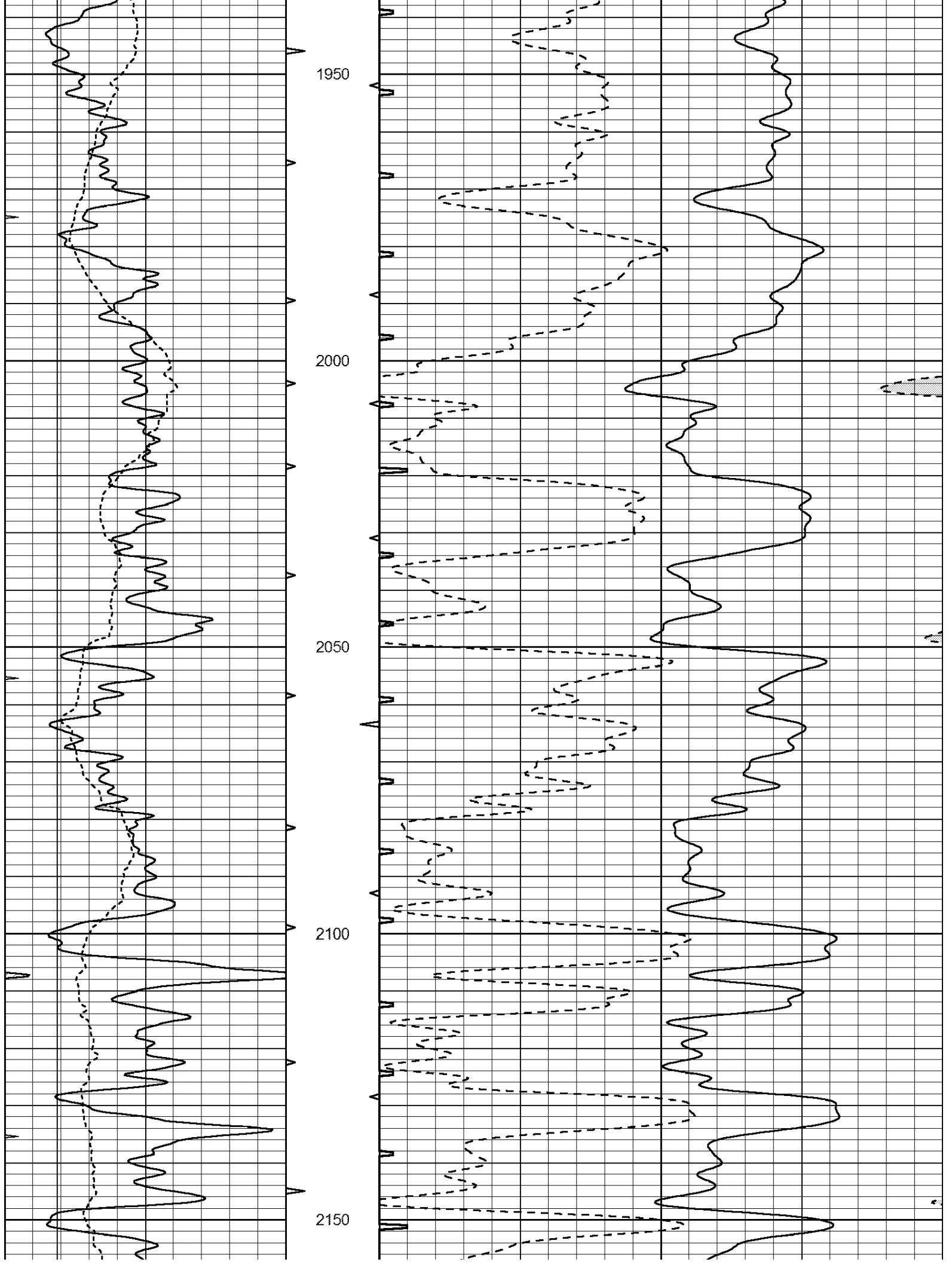
1750

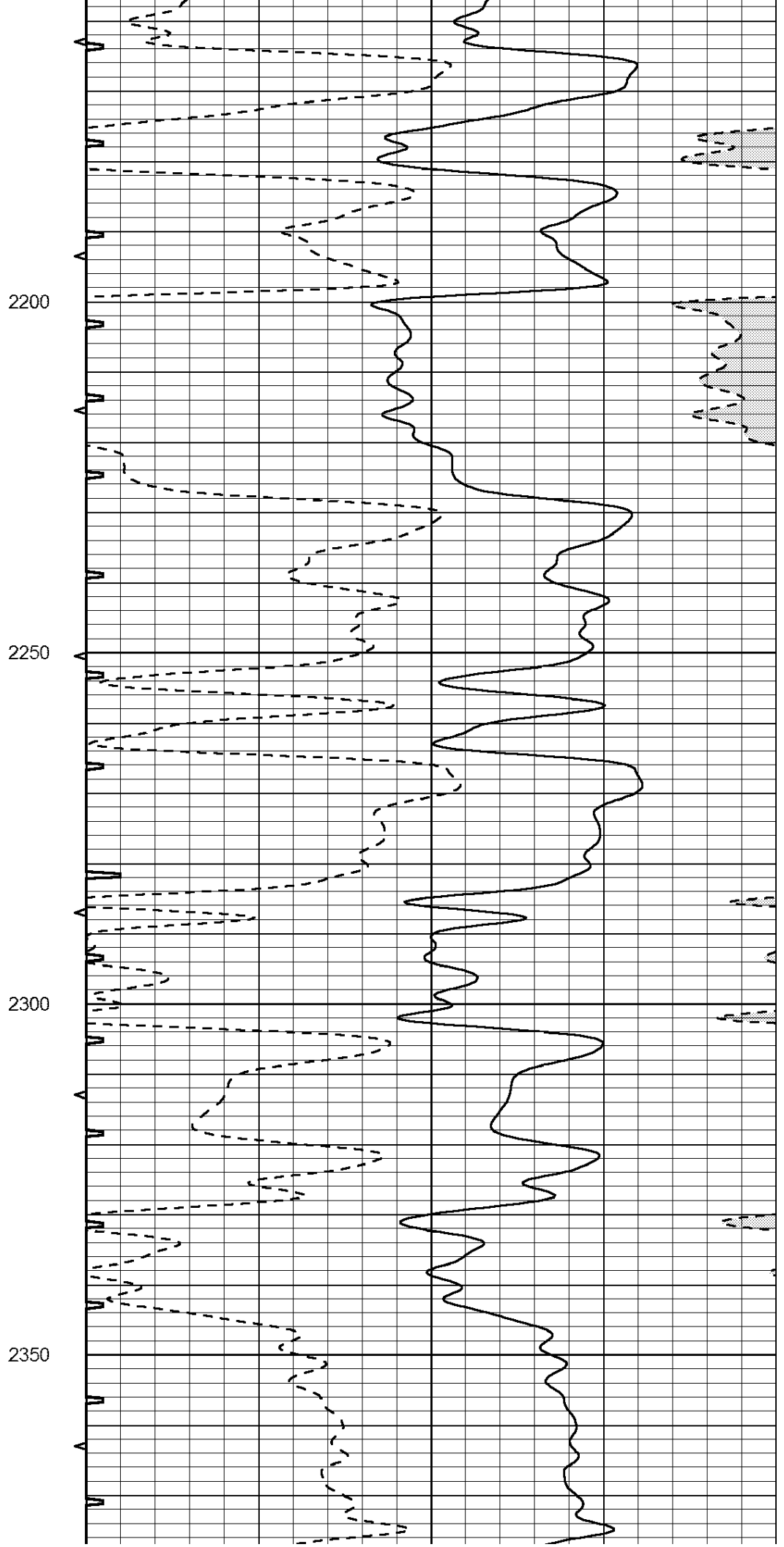
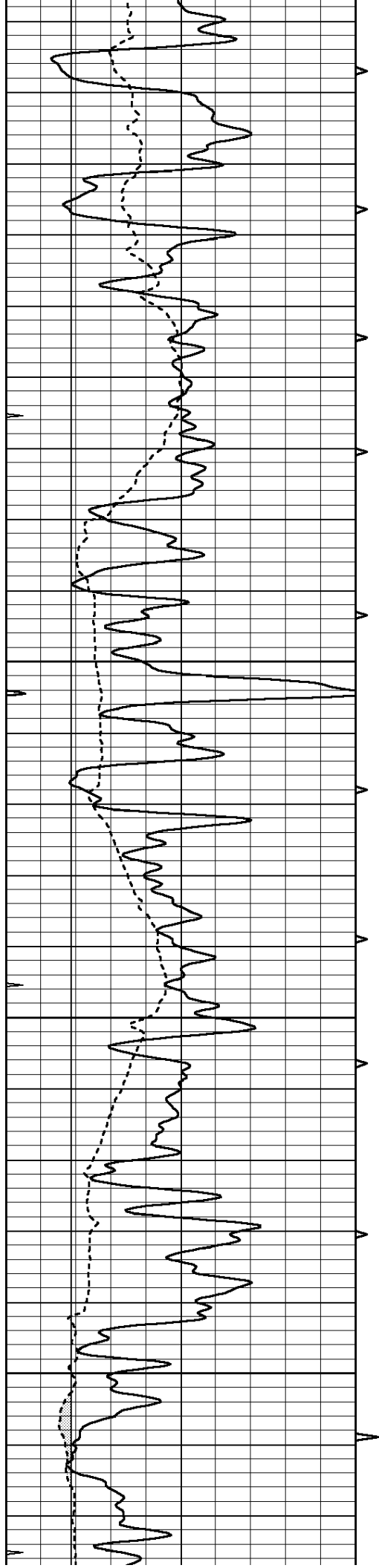
1800

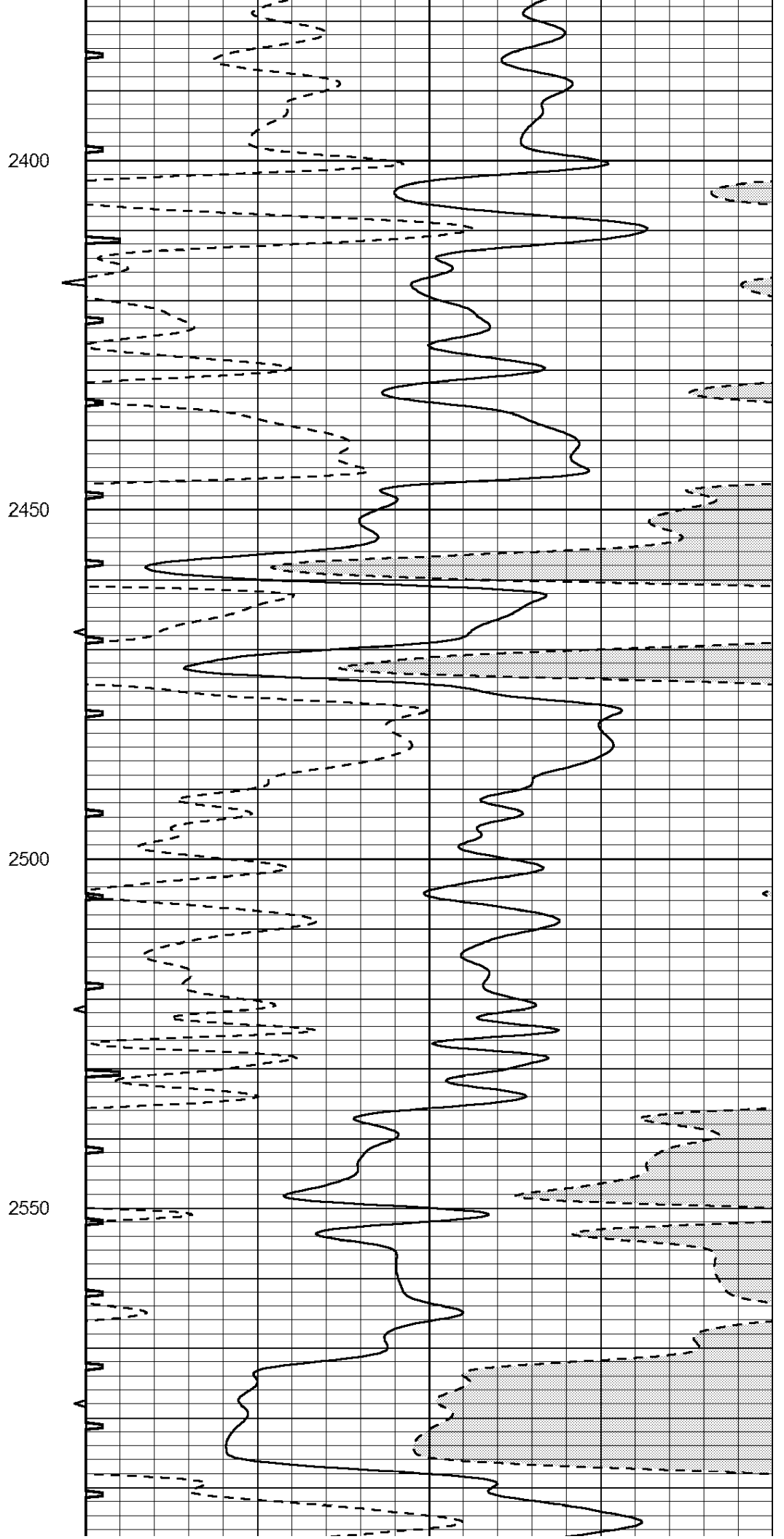
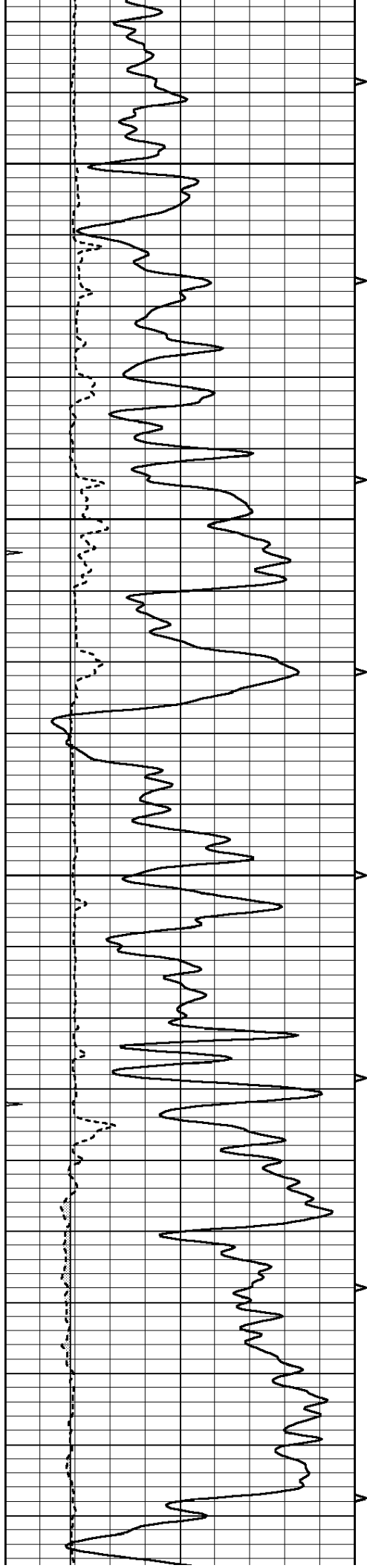
1850

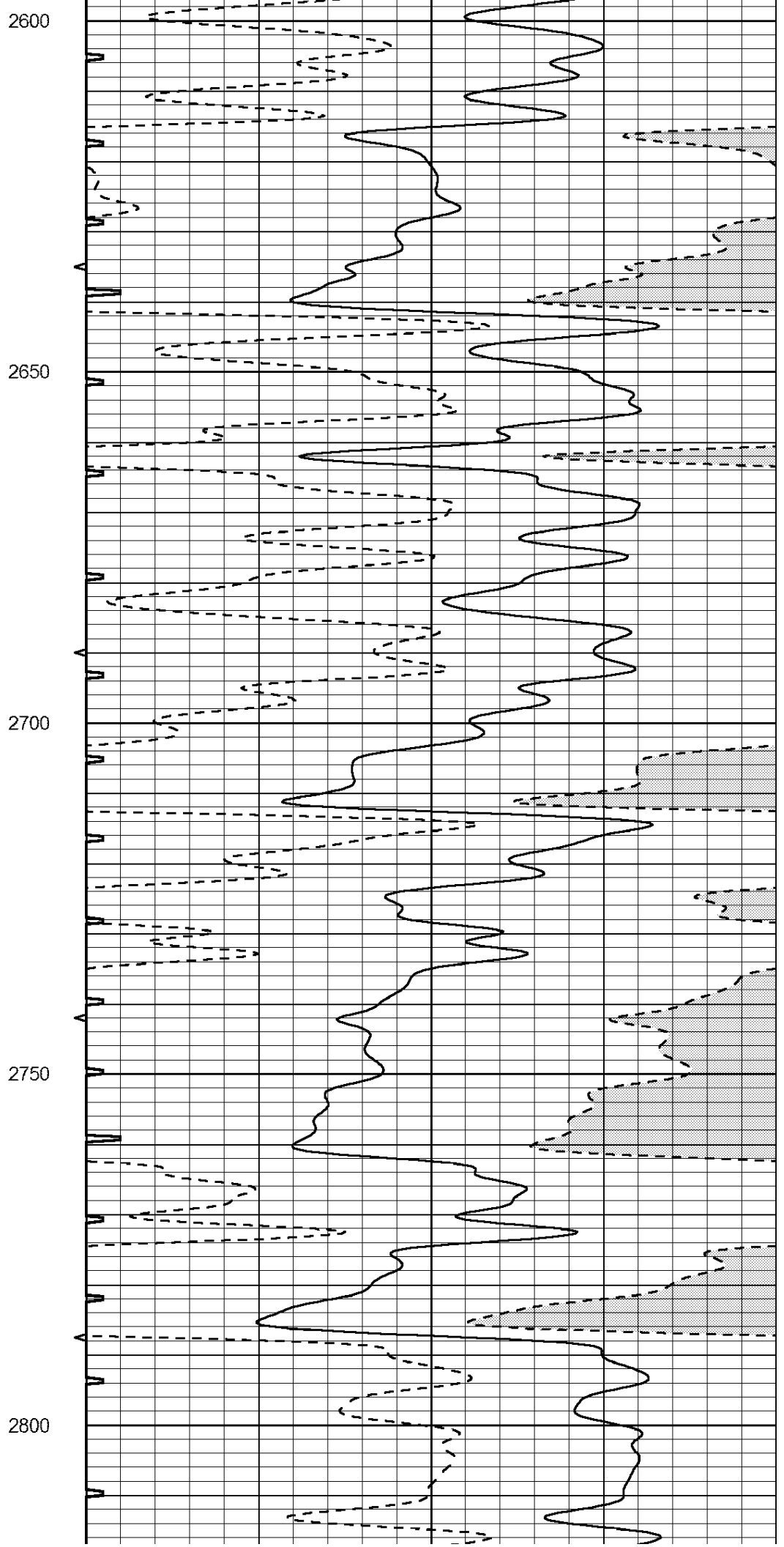
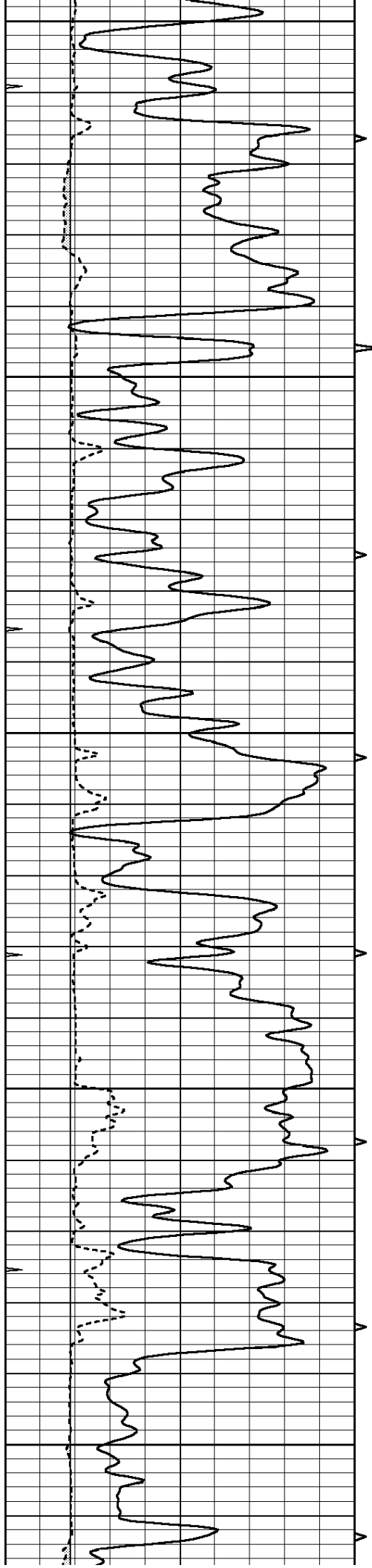
1900

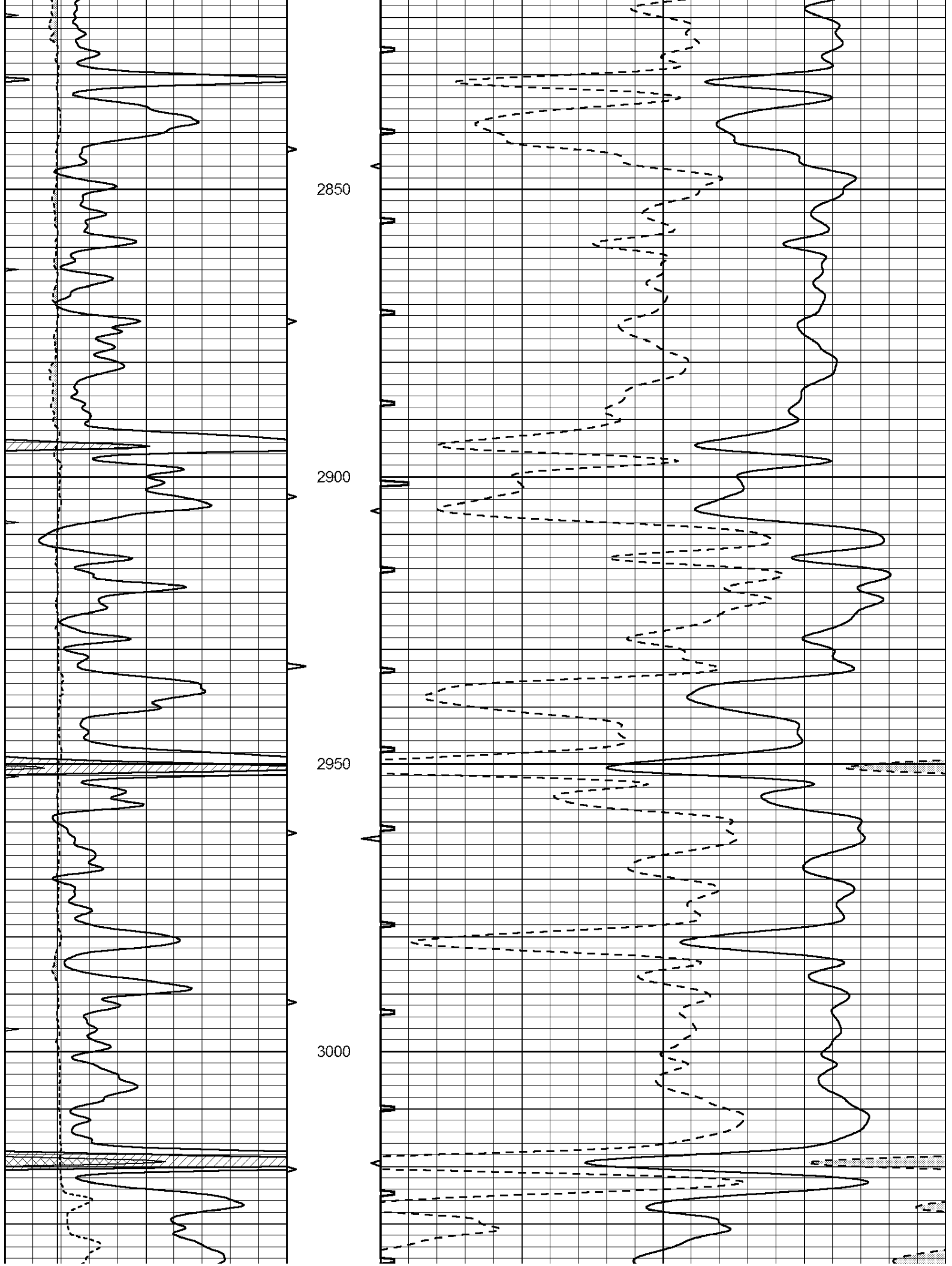


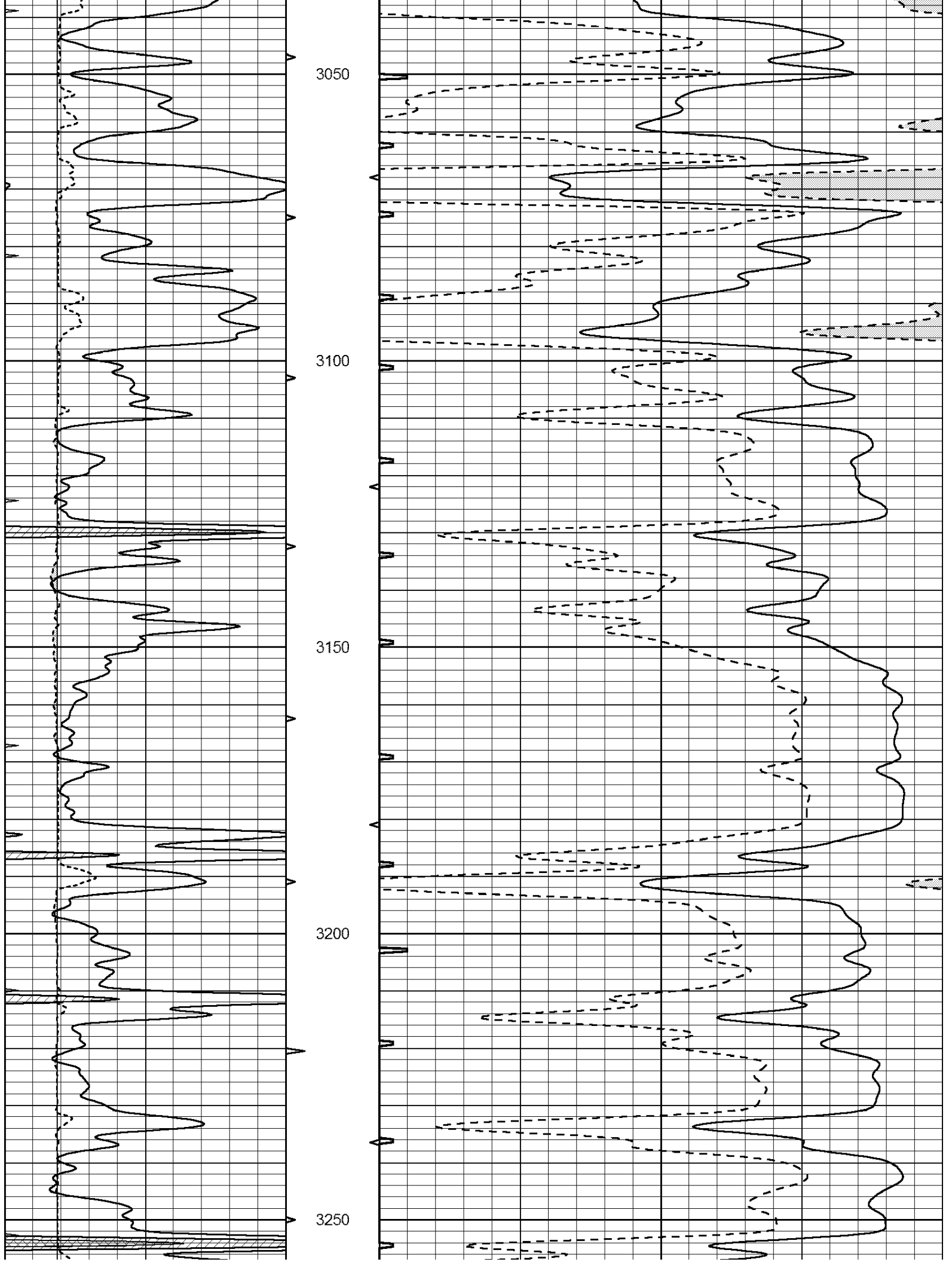


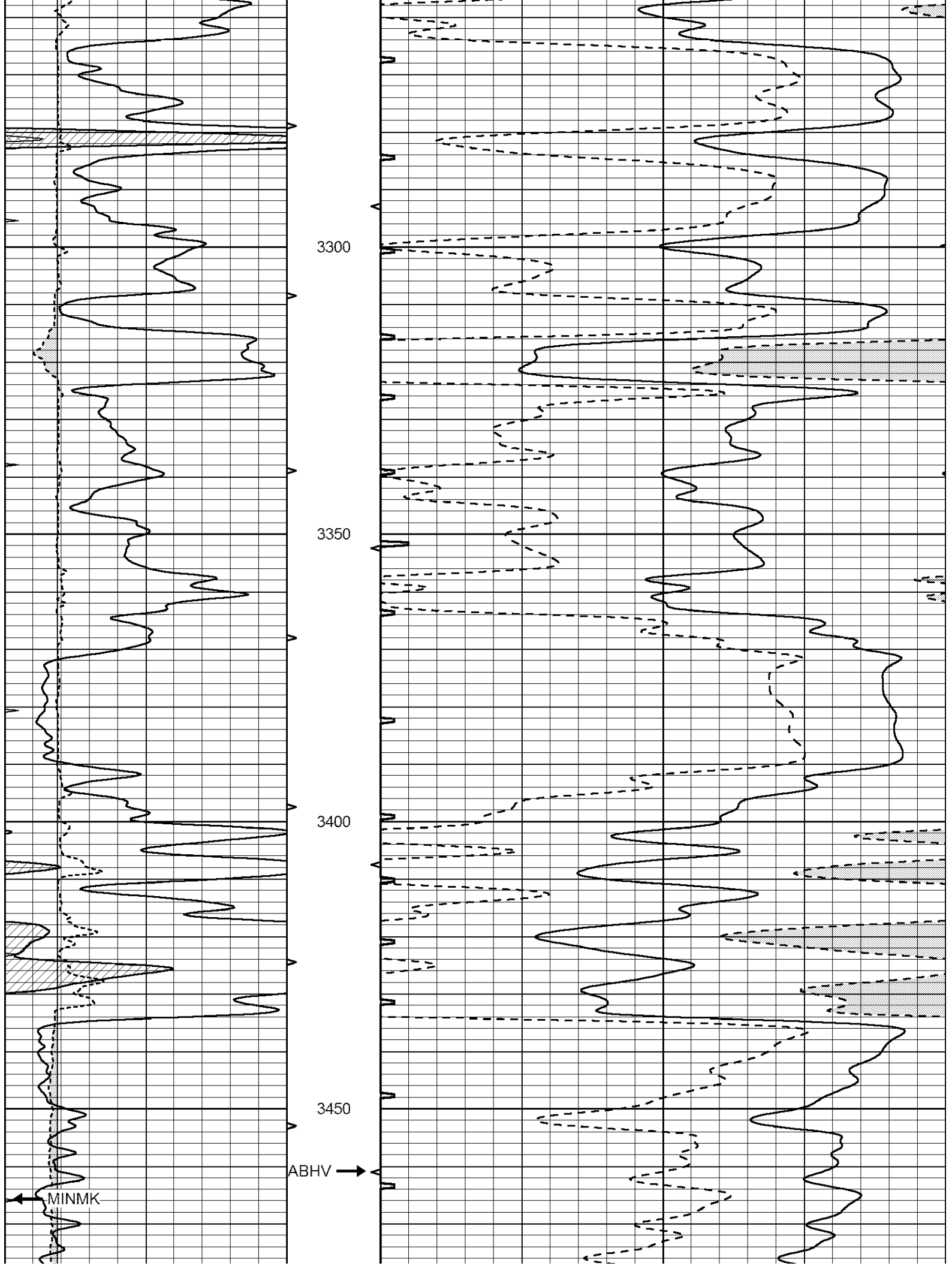


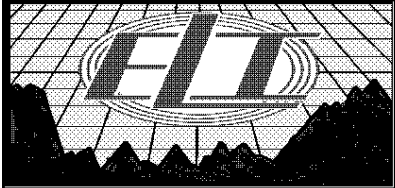
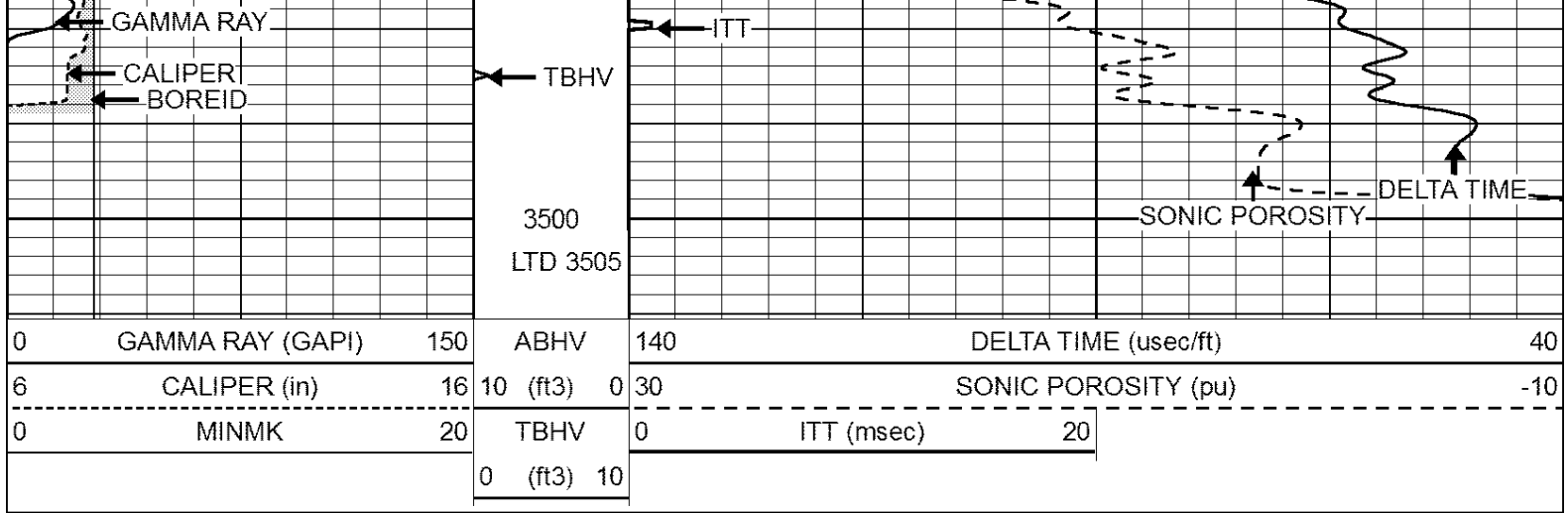








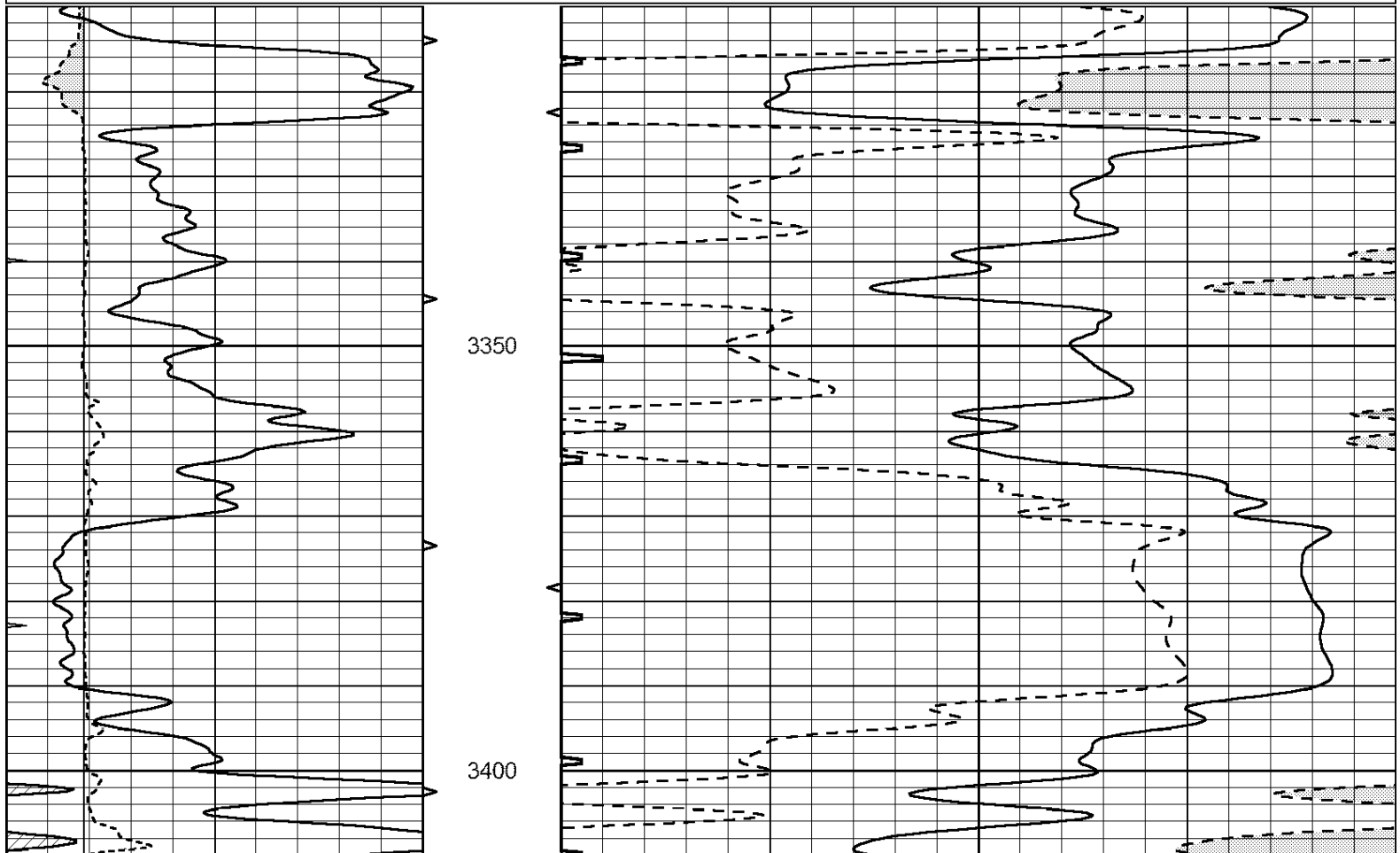


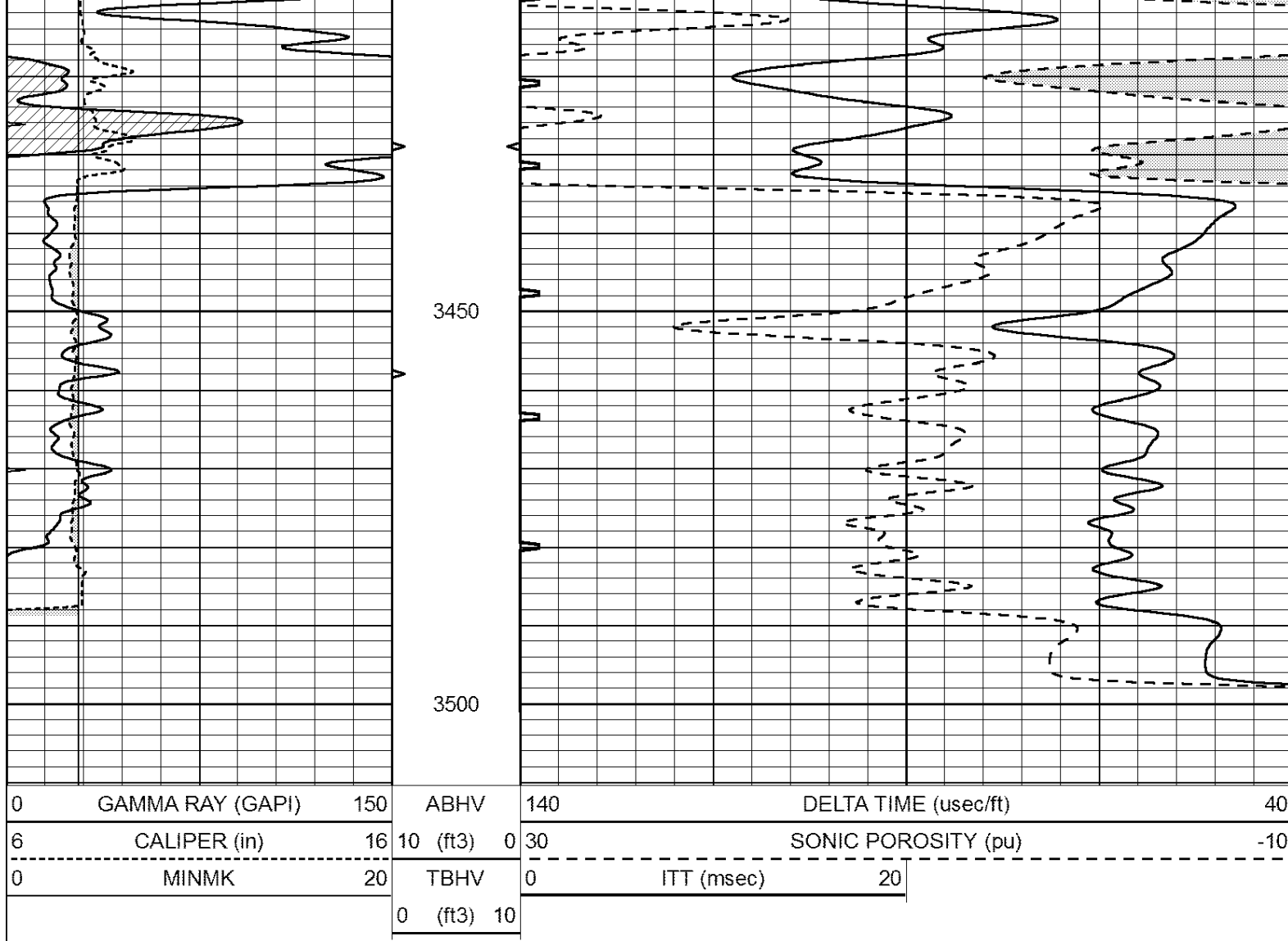


# REPEAT SECTION

Database File: 2119ddn.db  
 Dataset Pathname: pass6.1  
 Presentation Format: \_slt  
 Dataset Creation: Thu Dec 14 13:00:51 2017 by Calc Open-Cased 090629  
 Charted by: Depth in Feet scaled 1:240

0	GAMMA RAY (GAPI)	150	ABHV	140	DELTA TIME (usec/ft)	40	
6	CALIPER (in)	16	10 (ft3)	0	30	SONIC POROSITY (pu)	-10
0	MINMK	20	TBHV	0	ITT (msec)	20	
			0 (ft3)	10			





### Calibration Report

Database File: 2119ddn.db  
 Dataset Pathname: pass6.1  
 Dataset Creation: Thu Dec 14 13:00:51 2017 by Calc Open-Cased 090629

### MICRO Calibration Report

Serial Number: MICRO6  
 Tool Model: PROBE  
 Performed: Wed Aug 16 17:13:39 2017

Caliper Calibration: Gain=3.960 Offset=4.551

References	Low Cal	High Cal
Readings	7.000	14.000
	0.555	2.323

1.5" Calibration: Gain=38.075 Offset=-0.400

References	Low Cal	High Cal
Readings	0.000	20.000
	0.004	1.196

2" Calibration: Gain=50.000 Offset=-1.000

References	Low Cal	High Cal
Readings	0.000	20.000
	0.006	0.913

Gamma Ray Calibration Report

Serial Number:	GR2	
Tool Model:	OPEN	
Performed:	Wed Aug 16 17:13:40 2017	
Calibrator Value:	1.0	GAPI
Background Reading:	0.0	cps
Calibrator Reading:	1.0	cps
Sensitivity:	0.3800	GAPI/cps