



**COMPENSATED
DENSITY/NEUTRON
LOG**

Company MAI OIL OPERATIONS, INC.
Well LOUISE #1
Field CHEYENNE VIEW
County BARTON
State KANSAS

Company MAI OIL OPERATIONS, INC.
Well LOUISE #1
Field CHEYENNE VIEW
County BARTON State KANSAS

Location: API # : 15-009-26192-00-00
1650 FSL & 350' FWL
SEC 12 TWP 19S RGE 12W
Permanent Datum GROUND LEVEL Elevation 1822'
Log Measured From KELLY BUSHING 8' A.G.L.
Drilling Measured From KELLY BUSHING
Other Services DIL/MEL
Elevation K.B. 1830'
D.F. 1828
G.L. 1822

Date	12/20/17
Run Number	ONE
Depth Driller	3480
Depth Logger	3481
Bottom Logged Interval	3457
Top Log Interval	2700
Casing Driller	8 5/8" @ 370
Casing Logger	370
Bit Size	7 7/8"
Type Fluid in Hole	CHEMICAL MUD
Density / Viscosity	9.2/61
pH / Fluid Loss	9.0/9.6
Source of Sample	FLOWLINE
Rm @ Meas. Temp	.80@56
Rmt @ Meas. Temp	.60@56
Rmc @ Meas. Temp	.96@56
Source of Rmf / Rmc	MEASURED
Rm @ BHT	.40@111
Time Circulation Stopped	2 HOURS
Time Logger on Bottom	///
Maximum Recorded Temperature	111F
Equipment Number	4010
Location	HAYS, KANSAS
Recorded By	GUS PFANENSTIEL
Witnessed By	JIM MUSGROVE

<<< Fold Here >>>

All interpretations are opinions based on inferences from electrical or other measurements and we cannot and do not guarantee the accuracy or correctness of any interpretation, and we shall not, except in the case of gross or willful negligence on our part, be liable or responsible for any loss, costs, damages, or expenses incurred or sustained by anyone resulting from any interpretation made by any of our officers, agents or employees. These interpretations are also subject to our general terms and conditions set out in our current Price Schedule.

Comments

THANK YOU FOR USING ELI WIRELINE, HAYS, KS. (785) 628-6395

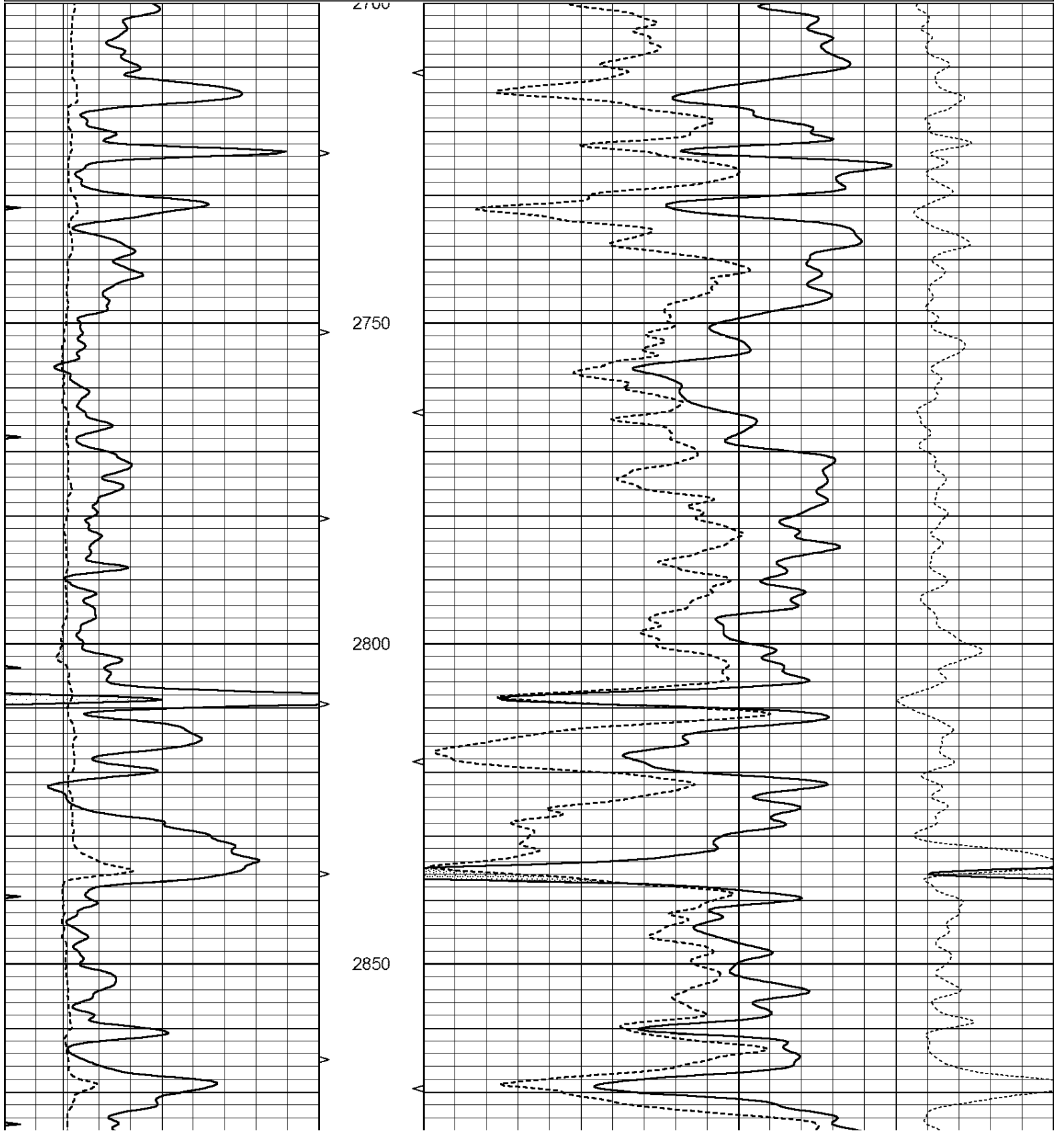
DIRECTIONS
ELLINWOOD 1 WEST, 3 1/4 NORTH,
EAST INTO.

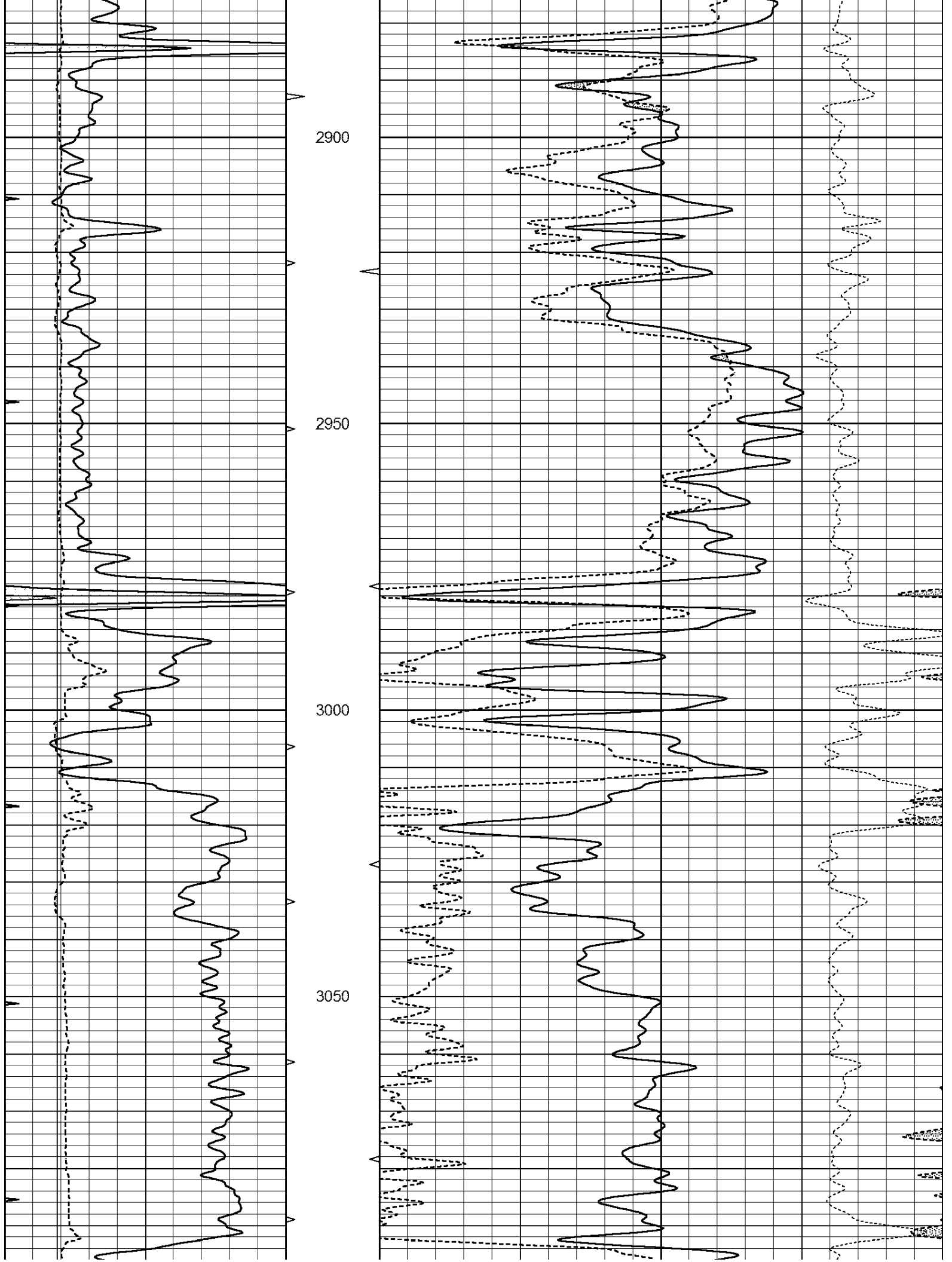


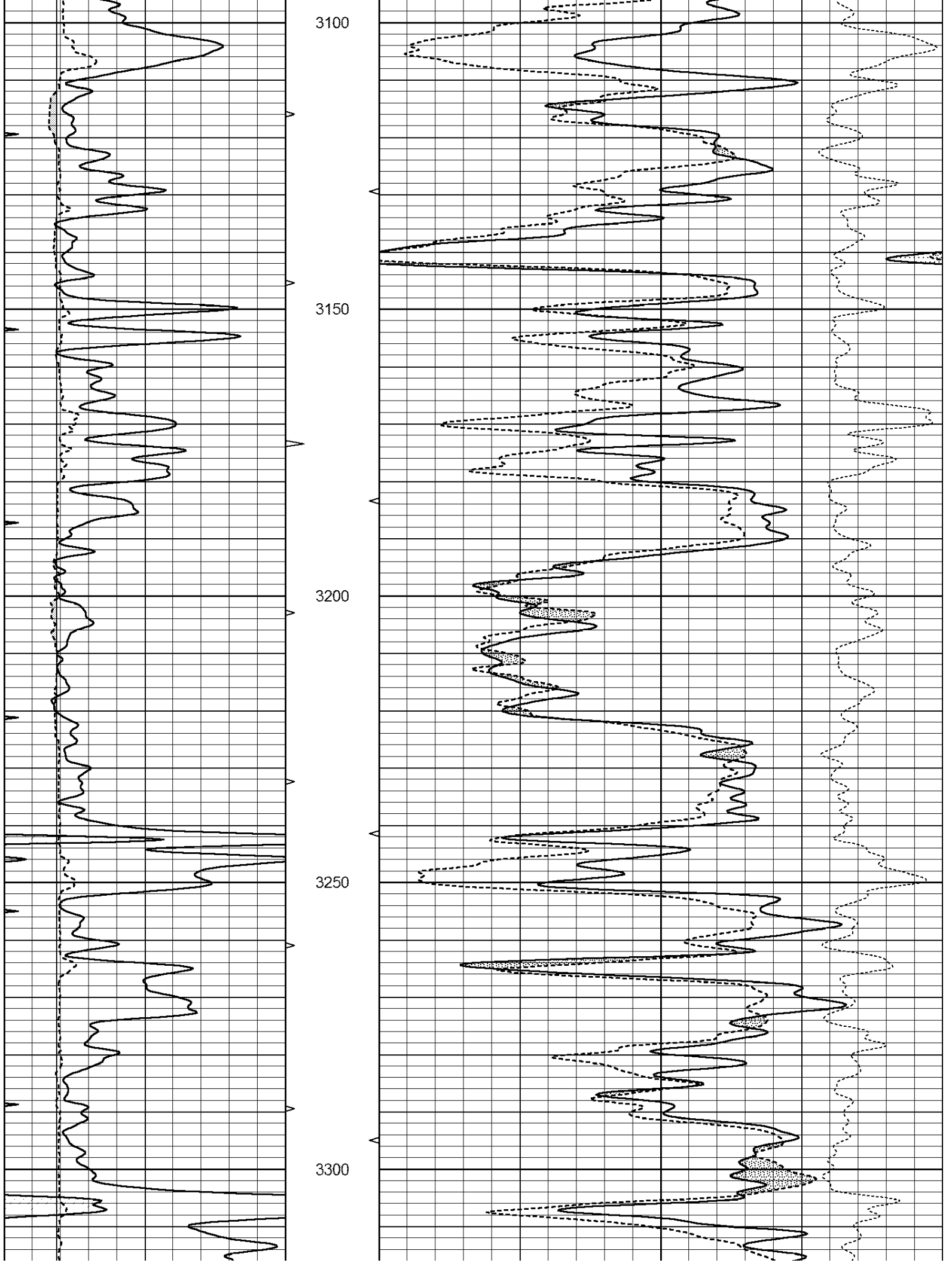
MAIN PASS

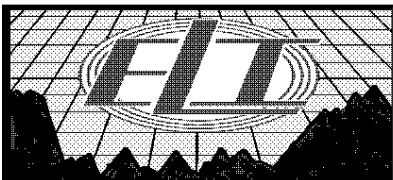
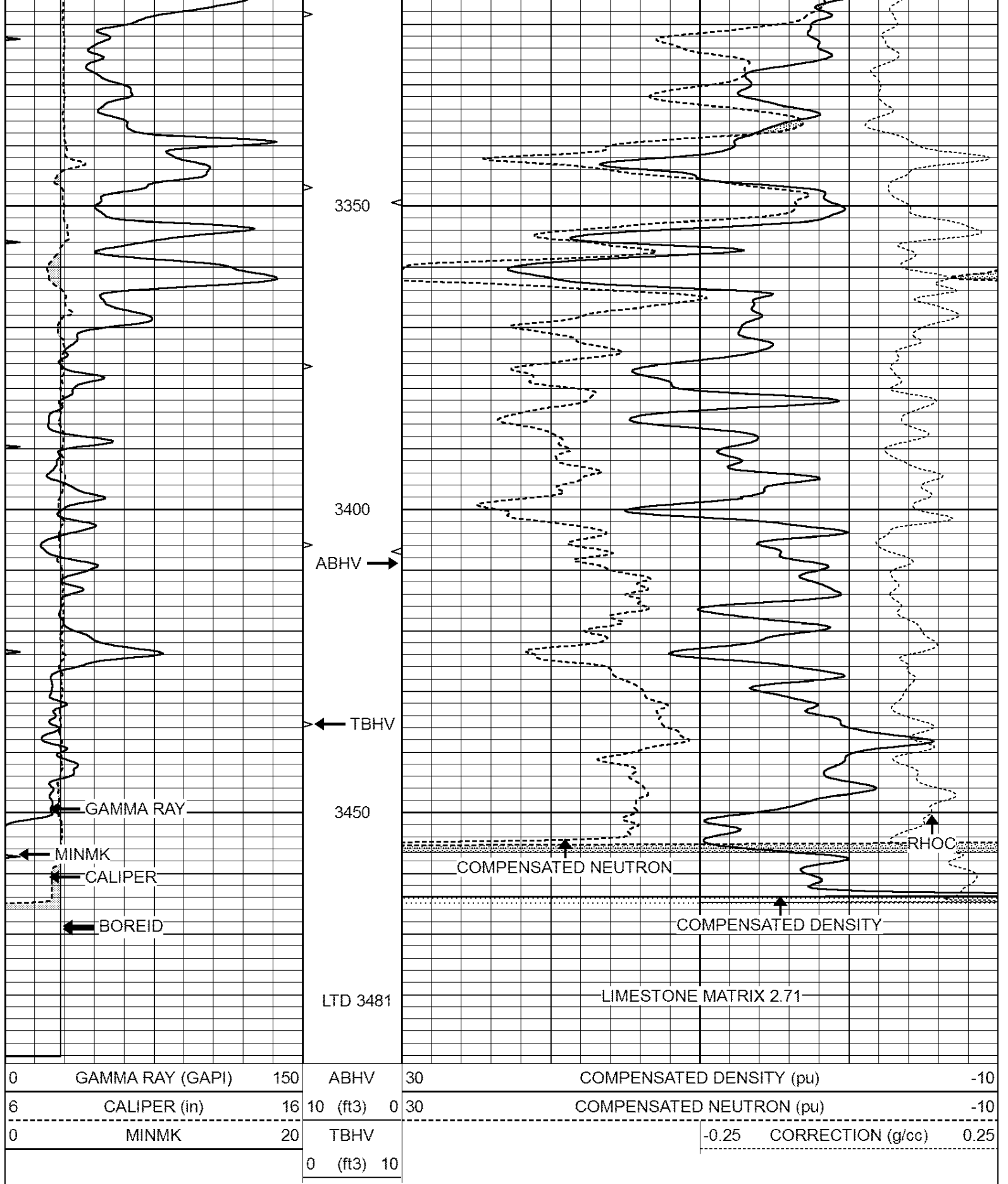
Database File: 2122ddn.db
 Dataset Pathname: pass3POR
 Presentation Format: den_neu
 Dataset Creation: Wed Dec 20 18:06:07 2017
 Charted by: Depth in Feet scaled 1:240

0	GAMMA RAY (GAPI)	150	ABHV	30	COMPENSATED DENSITY (pu)	-10
6	CALIPER (in)	16	10 (ft3)	0 30	COMPENSATED NEUTRON (pu)	-10
0	MINMK	20	TBHV		-0.25 CORRECTION (g/cc)	0.25
			0 (ft3)	10		





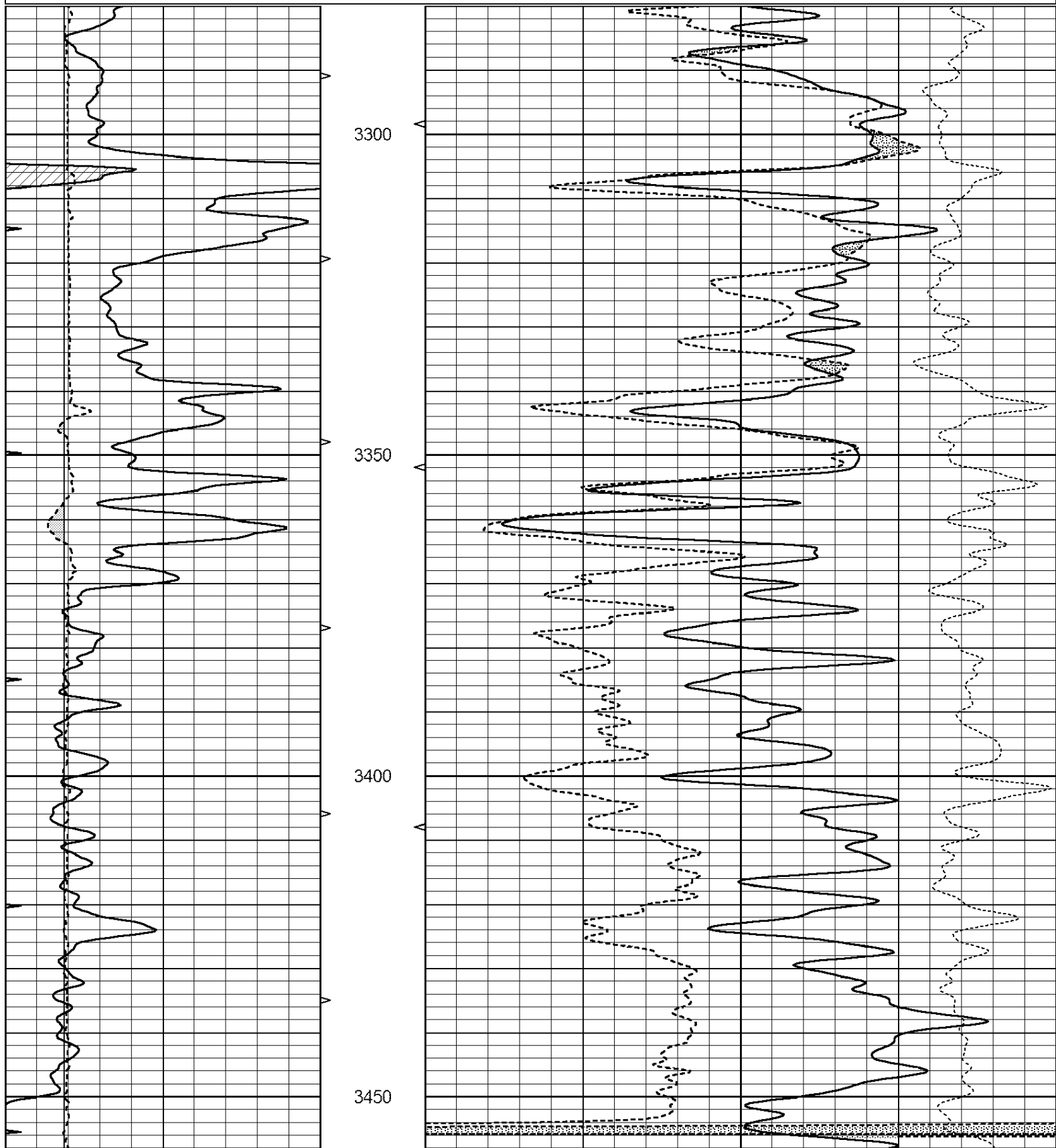


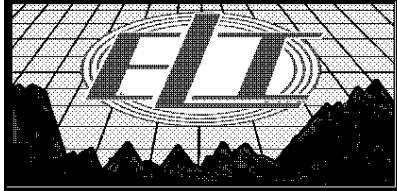
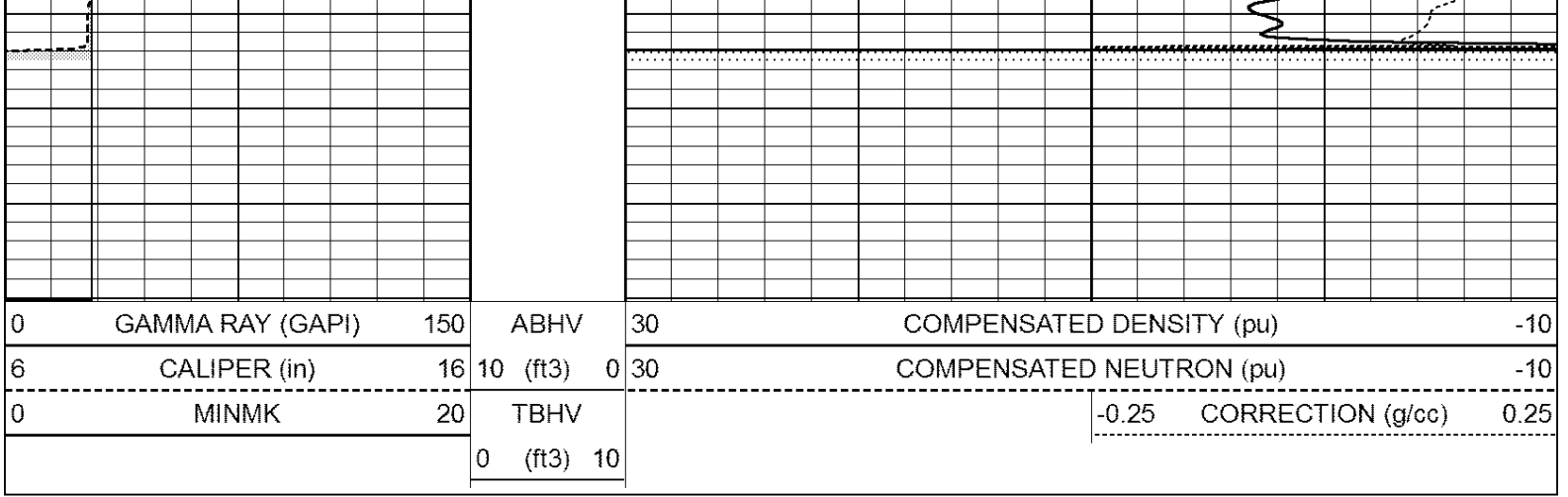


REPEAT SECTION

Database File: 2122ddn.db
 Dataset Pathname: pass2RP
 Presentation Format: den_neu
 Dataset Creation: Wed Dec 20 17:26:05 2017
 Charted by: Depth in Feet scaled 1:240

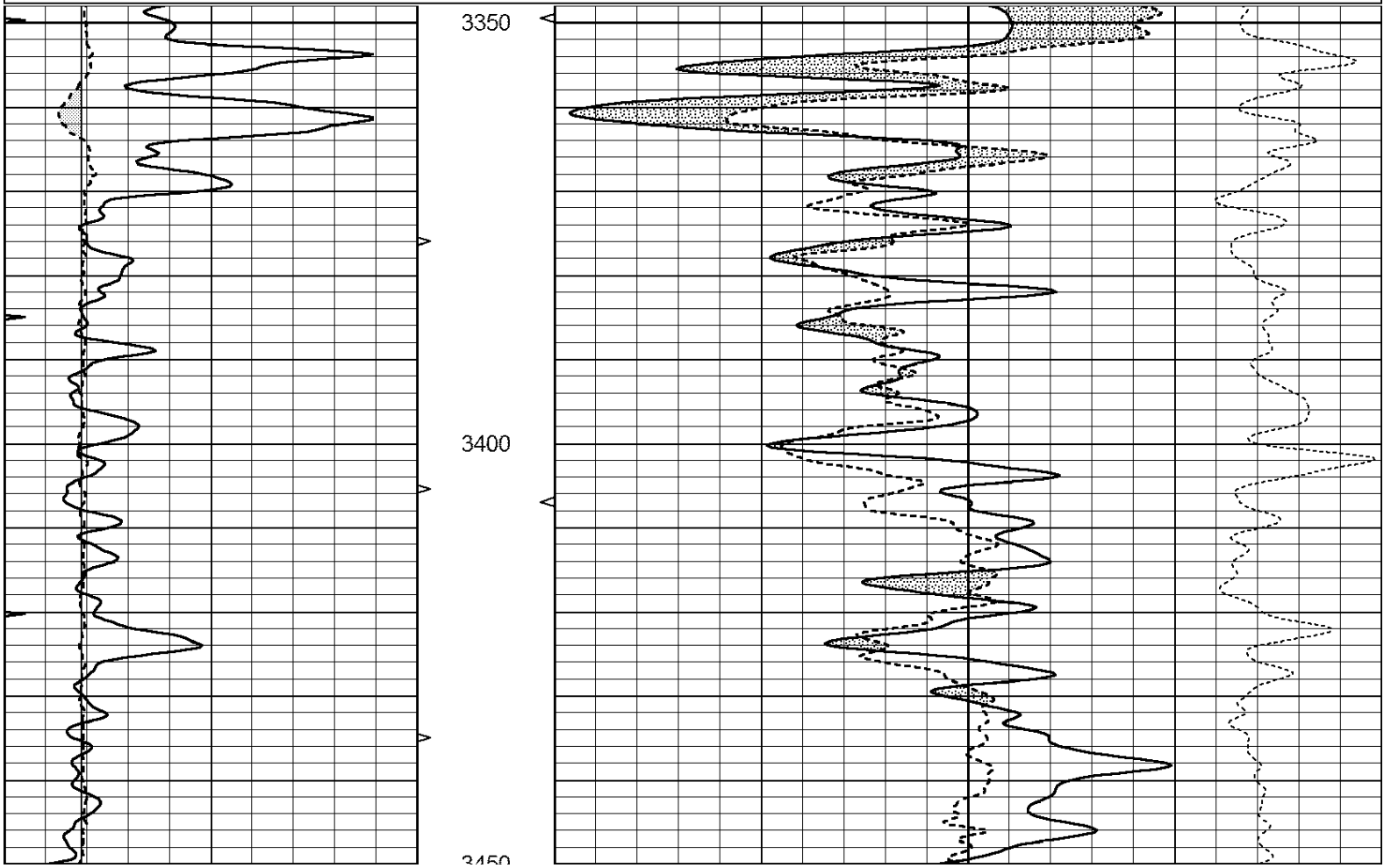
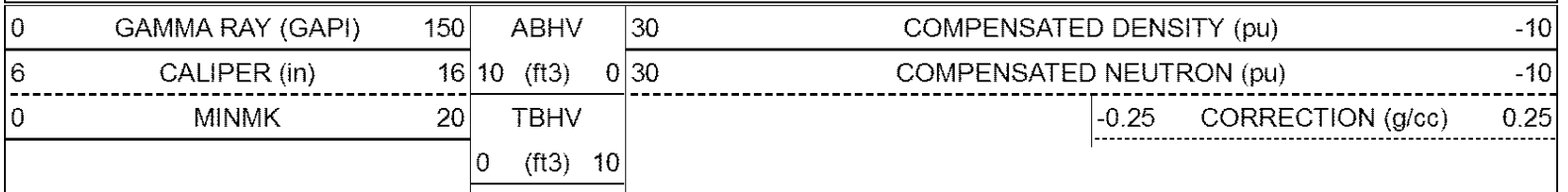
0	GAMMA RAY (GAPI)	150	ABHV	30	COMPENSATED DENSITY (pu)	-10		
6	CALIPER (in)	16	10 (ft3)	0	30	COMPENSATED NEUTRON (pu)	-10	
0	MINMK	20	TBHV			-0.25	CORRECTION (g/cc)	0.25
			0 (ft3)	10				

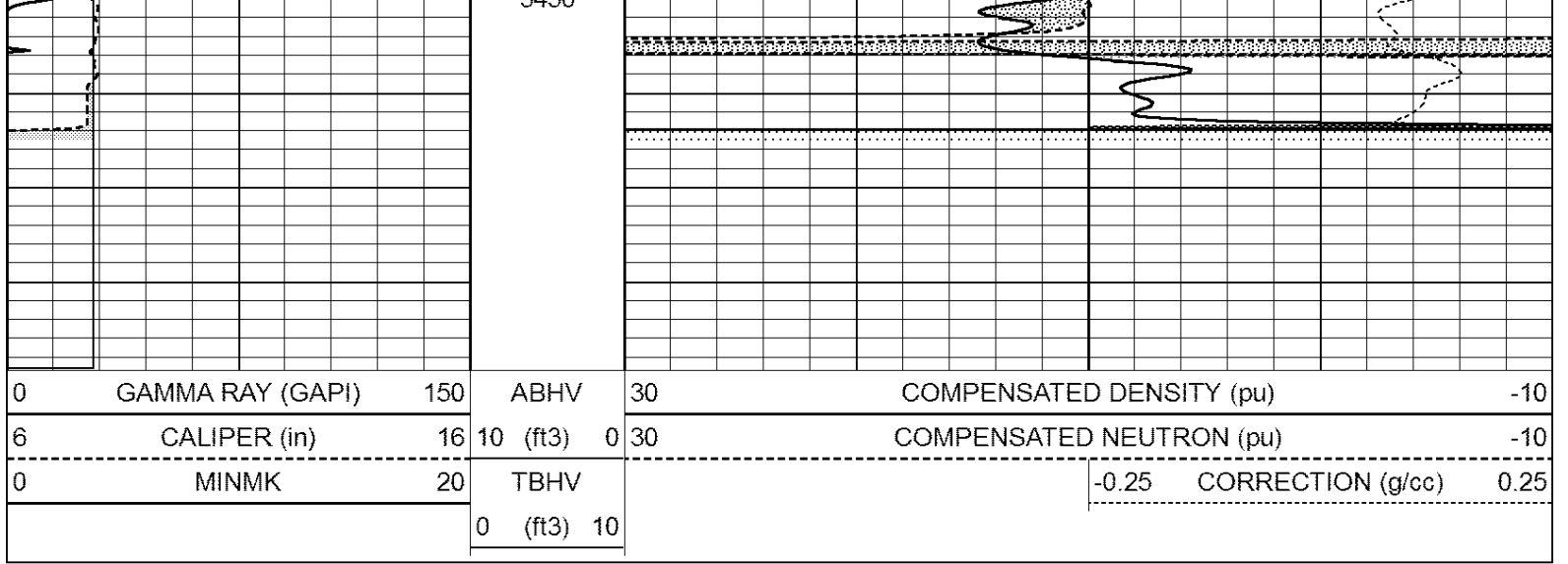




DOLOMITE MATRIX 2.81

Database File: 2122ddn.db
 Dataset Pathname: pass2DOL
 Presentation Format: den_neu
 Dataset Creation: Wed Dec 20 16:59:26 2017
 Charted by: Depth in Feet scaled 1:240





Calibration Report

Database File: pe2.db
 Dataset Pathname: pass2
 Dataset Creation: Mon Aug 21 11:58:02 2017 by Log Open-Cased 090629

Dual Induction Calibration Report

Serial-Model: PROBE8-DILG
 Surface Cal Performed: Mon Aug 21 11:58:18 2017
 Downhole Cal Performed: Mon Aug 21 11:58:21 2017
 After Survey Verification Performed: Mon Aug 21 11:58:23 2017

Surface Calibration

Loop:	Readings			References			Results	
	Air	Loop		Air	Loop		m	b
Deep	0.015	0.648	V	0.000	400.000	mmho/m	620.000	0.000
Medium	0.029	0.796	V	0.000	464.000	mmho/m	590.000	-12.000
Internal:	Zero	Cal		Zero	Cal		m	b
Deep	0.017	0.657	V	0.000	400.000	mmho/m	625.153	-10.619
Medium	0.016	0.757	V	0.000	464.000	mmho/m	625.992	-9.739

Downhole Calibration

	Readings			References			Results	
	Zero	Cal		Zero	Cal		m'	b'
Deep	0.000	0.000	mmho/m	2.011	405.777	mmho/m	1.000	0.000
Medium	0.000	0.000	mmho/m	7.590	503.393	mmho/m	1.000	0.000
LL3		7.500	V		1500.000	Ohm-m		
		0.000	V		20.000	Ohm-m		
		-7.200	V		3800.000	mmho-m		

After Survey Verification

	Readings			Targets			Results	
	Zero	Cal		Zero	Cal		m'	b'
Deep	0.000	0.000	mmho/m	0.000	0.000	mmho/m	0.000	0.000
Medium	0.000	0.000	mmho/m	0.000	0.000	mmho/m	0.000	0.000
LL3		1.000	Ohm-m		1.000	Ohm-m		
		0.000	Ohm-m		0.000	Ohm-m		
		1.000	mmho-m		1.000	mmho-m		

Litho Density Calibration Report

Serial: 002 Model: DRP

Master Calibration

Performed Mon Aug 21 11:56:41 2017

	Background	Magnesium	Aluminum	Sandstone	
Window 1	833.6	7394.2	2287.3	8111.8	cps
Window 2	768.9	6322.3	1995.6	6800.0	cps
Window 3	621.5	3261.9	1186.4	3380.9	cps
Window 4	184.2	185.7	184.9	184.8	cps
Long Space	0.0	5553.4	1226.6	6031.1	cps
Short Space	1.2	1307.5	903.9	1387.7	cps
Rho		1.7100	2.5900	1.3800	g/cc
Pe		0.0000	2.5700	1.5500	
Rib Angle	: 46.3	Rib Slope	: 1.045	Density/Spine Ratio	: 0.566
Spine Angle	: 76.3	Spine Slope	: 4.090	Spine Intercept	: -20.7

Before Survey Verification

Performed Wed Dec 31 18:00:00 1969

Window 1	0.0	0.0	0.0	0.0	cps
Window 2	0.0	0.0	0.0	0.0	cps
Window 3	0.0	0.0	0.0	0.0	cps
Window 4	0.0	0.0	0.0	0.0	cps
Long Space	0.0	0.0	0.0	0.0	cps
Short Space	0.0	0.0	0.0	0.0	cps
Measured Rho		0.0000	0.0000	0.0000	g/cc
Measured Correction		0.0000	0.0000	0.0000	g/cc
Measured Pe			0.0000	0.0000	

After Survey Verification

Performed Wed Dec 31 18:00:00 1969

Window 1	0.0	0.0	0.0	0.0	cps
Window 2	0.0	0.0	0.0	0.0	cps
Window 3	0.0	0.0	0.0	0.0	cps
Window 4	0.0	0.0	0.0	0.0	cps
Long Space	0.0	0.0	0.0	0.0	cps
Short Space	0.0	0.0	0.0	0.0	cps
Measured Rho		0.0000	0.0000	0.0000	g/cc
Measured Correction		0.0000	0.0000	0.0000	g/cc
Measured Pe			0.0000	0.0000	

Compensated Neutron Calibration Report

Serial Number: 6I
Tool Model: G

CALIBRATION

Detector	Readings	Target	Normalization
Short Space	1.00 cps	1.00 cps	1.0000
Long Space	1.00 cps	1.00 cps	1.0000

PRE-SURVEY VERIFICATION

	Detector	Readings	Measured	Target
1)	Short Space	cps		
	Long Space	cps	pu	pu
2)	Short Space	cps		

	Long Space	cps	pu
3)	Short Space	cps	
	Long Space	cps	pu

POST-SURVEY VERIFICATION

	Detector	Readings	Measured	Target
1)	Short Space	cps		
	Long Space	cps	pu	pu
2)	Short Space	cps		
	Long Space	cps	pu	pu
3)	Short Space	cps		
	Long Space	cps	pu	pu

Gamma Ray Calibration Report

Serial Number:	GR6	
Tool Model:	OPEN	
Performed:	Mon Aug 21 11:59:01 2017	
Calibrator Value:	150.0	GAPI
Background Reading:	0.0	cps
Calibrator Reading:	276.0	cps
Sensitivity:	0.5500	GAPI/cps